

# PROVD8

8" LCD OVERHEAD  
TV/MONITOR WITH  
DVD PLAYER

*Mobile*  
**VIDEO**



## Operation Manual

128-6392

Released 06-14-02.

### **Important Notice**

It is unlawful in most jurisdictions for a person to drive a motor vehicle which is equipped with a television viewer or screen that is located in the motor vehicle at any point forward of the back of the driver's seat, or that is visible, directly or indirectly, to the driver while operating the vehicle. In the interest of safety, the PROVD8 should never be installed where it will be visible, directly or indirectly, by the operator of the motor vehicle.

### **Warnings**

Do not use any solvents or cleaning materials when cleaning the video monitor.

Do not use any abrasive cleaners, they may scratch the screen. Use only a lightly dampened lint free cloth to wipe the screen if it is dirty.

Lock the LCD screen in the fully closed position when not in use.

Before putting on headphones always adjust the volume setting to the lowest position.

Remember to leave the dome light switch in the off or auto positions when the vehicle is unattended, as the dome lights, if left on, can drain the vehicle's battery.

Do not put pressure on the screen.

Caution children to avoid touching or scratching the screen, as it may become dirty or damaged.

### **Television Reception**

This entertainment system is designed primarily for viewing prerecorded movies or playing video games. Television reception in a moving vehicle will be limited and in some areas will not be possible due to weak and variable signal strength. Television viewing in a stationary vehicle will result in an improvement, but may still be marginal due to signal strength. The quality of the picture will not be consistent with home TV reception. Reception may be affected by weather and distance from TV station. A weak signal may cause the picture to roll, be snowy, or cause some color loss.

Congratulations on your purchase of the Audiovox PROVD8 Overhead TV/Monitor with DVD Player. The PROVD8 has been designed to give you and your family many years of video entertainment in the mobile environment. Please read the directions that follow to familiarize yourself with the product and to ensure that you obtain the best results from your equipment.

**Please NOTE:** Installation options vary, see the individual owner's manuals for each component in your system to obtain a full understanding of each component's operation.

### **Safety Precaution**

For safety reasons, when changing video media it is recommended that the vehicle is not in motion, and that you do not allow children to unfasten seat-belts to change video media or make any adjustments to the system. System adjustments can be accomplished using the remote control unit, while seat-belts remain fastened. Enjoy your Audiovox entertainment system but remember-safety of all passengers remains the number one priority.

### **Features**

- **8 Inch (4:3) TFT (Thin Film Transistor) Active Matrix LCD (Liquid Crystal Display) Monitor**
- **Built-in DVD Player**
- **Built-in TV Tuner**
  - **AVI Input**
  - **AUX (Game/Camcorder) Input**
- **OSD (On Screen Display) for Control of Picture Quality and Functions**
- **Three Frequency FM Modulator (remote control) with OSD for Frequency Display**
- **Infrared Transmitter for IR Wireless Headphones**
  - **Headphone / Speaker Amplifier**
  - **Headphone Jacks (DVD/TV/Monitor)**
  - **Forward and Side Remote Sensor**
  - **Dome Lights with Switch**
  - **Backlit Controls for Low Light Operation**
- **Full Function Remote Control**

# Controls and Indicators Diagram

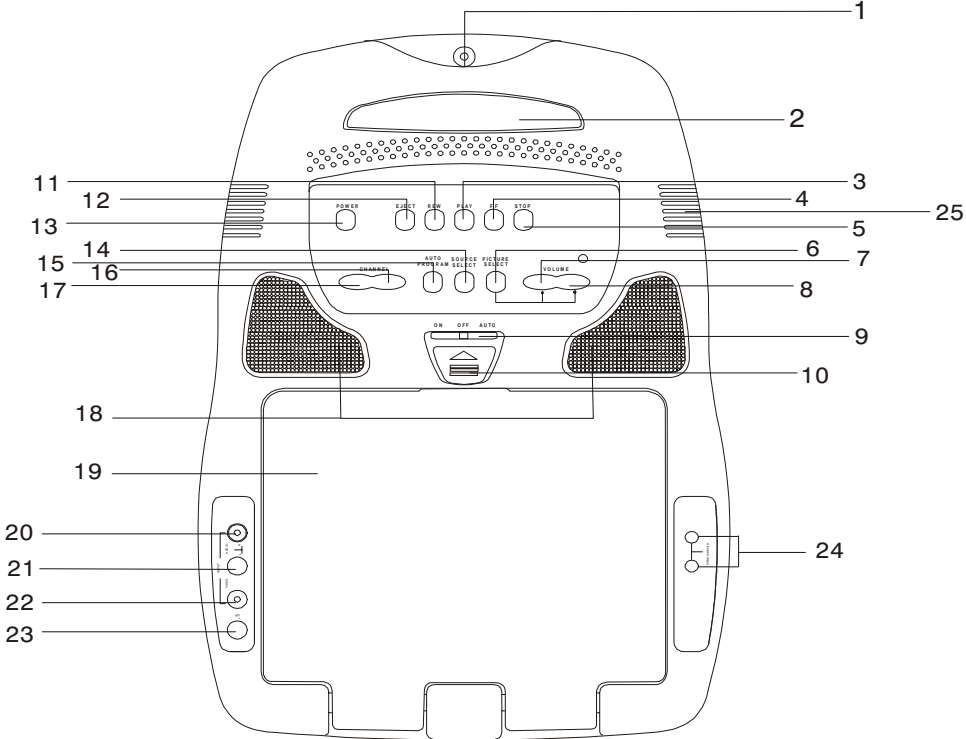


Figure 1

## Main Function Descriptions

### 1. DVD Disc Insertion Slot

### 2. Infrared Transmitter and Sensor

Use to transmit audio to wireless headphones. Also allows the remote control to operate the PROVD8 and to control other accessories in the system

### 3. PLAY (◆) Button

This button is used to enter the play mode.

### 4. FWD (◆◆) Button

Allows the user to search in a forward direction at 2,4, and 8 times the normal speed.

### 5. STOP (■) Button

### 6. PICTURE SELECT Button

Each time this button is pressed, the on screen picture adjustment display cycles through "adjustment bars" for BRIGHTNESS, CONTRAST, COLOR and TINT. Once the desired adjustment bar is displayed, use the VOLUME UP/DOWN buttons to adjust the setting. The display will automatically turn off if no adjustments are made within 6 seconds, or if any other button is depressed.

### 7. VOLUME DOWN (-) Button

Use this button to decrease the volume level of the headphone jacks. It is also used to make picture adjustments in picture select mode.

### 8. VOLUME UP (+) Button

Use this button to raise the volume level of the headphone jacks. It is also used to make picture adjustments in picture select mode.

**NOTE:** These buttons will not affect the volume of wireless headphones or the wired RF modulator. When using these devices the volume must be adjusted with the wireless headphone volume control or with your radio's volume control (see page 10, Wireless Headphones, or page 11, Wired FM Modulator).

### 9. Three Position Dome Light Switch

- Auto – Automatically switches on the dome lights in conjunction with the vehicle's interior illumination.
- Off – The dome lights will not turn on in this position.
- On – Turns on the dome lights.

### 10. Screen Release

Moves in direction of the arrow to release the drop down screen.

### 11. Rev (◆◆) Button

Allows the user to search in a backwards direction.

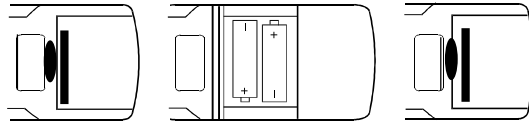
### 12. Eject (▲) Button

Ejects Disc.

- 13. Power Button**  
(Bright red when system is on, dim when off).
- 14. Source Select**  
(DVD, TV, AV1, AUX).
- 15. TV Auto-program**  
Allows the user to scan and program active TV stations into memory.
- 16. Channel Up (□) Button**  
Use this button to increase the channel number to the desired channel.
- 17. Channel Down (□) Button**  
Use this button to decrease the channel number to the desired channel.
- 18. Dome Lights**  
provide additional interior illumination.
- 19. Drop Down LCD Panel.**
- 20. Auxiliary Audio Input (Right).**
- 21. Auxiliary Audio Input (Left).**
- 22. Auxiliary Video Input.**
- 23. Side Remote Sensor Eye**  
Allows the remote control to operate the PROVD8 and control the other accessories.
- 24. Headphone Jacks**  
Allows the use of wired headphones with a 1/8" plug for listening to video program audio.
- 25. PROVD8 Ventilation Opening**

**NOTE:** Audiovox recommends the use of the Audiovox HP275 Headphones when using wired headphones.

## REMOTE CONTROL OPERATION

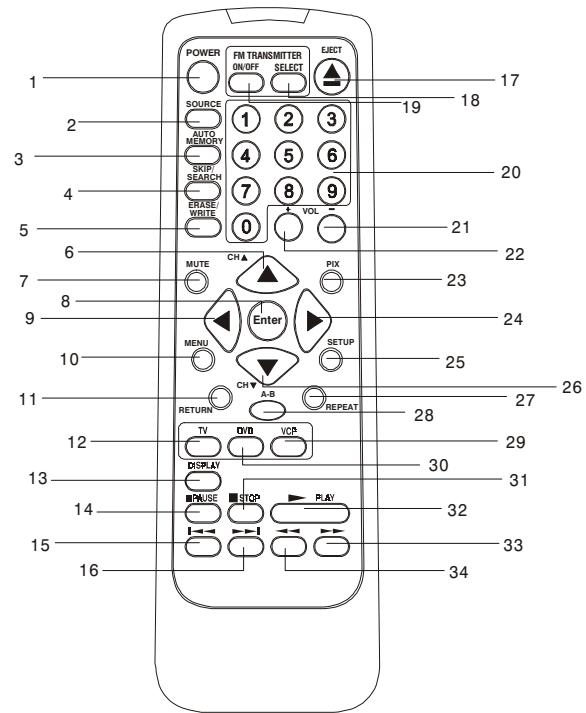


### BATTERY INSTALLATION

Before attempting to operate your Remote Control, install the batteries as described below.

- 1) Turn the Remote Control face down. Using a fingernail, lift the battery cover off.
- 2) Install two “AAA” batteries as shown. Make sure that proper polarity (+ or -) is observed.
- 3) Align the cover tabs with the remote control and press down until the cover clicks.

The remote control will operate the PROVD8 and Audiovox VCP's. It is not a universal remote control and will not control equipment from other manufacturers.



## DVD Remote Function Descriptions

### 1. DVD POWER ON/OFF Button\*

Press this button to turn the PROVD8 on. The DVD or selected video source will be displayed on screen and the picture will appear in a few seconds. Press the button again to turn the PROVD8 off.

### 2. SOURCE Button

Video equipment connected to the AUDIO/VIDEO inputs can be selected and displayed on the LCD display screen by pressing this button. Each time the button is pressed, the Audio / Video source will change in the following sequence: DVD, TV, AV1 and AUX.

### 3. AUTO MEMORY

When the AUTO MEMORY button is pressed, all channels are searched and channels that are detected with signals of sufficient levels are automatically stored. Please refer to page 3 for more information on TV reception.

### 4. SKIP / SEARCH

This button selects between SKIP and SEARCH modes. In "SKIP mode" the TV tuner will tune and stop on channels that are programmed into memory when the CHANNEL UP/DOWN buttons are used. When the SKIP mode is disabled, the TV will stop on all active channels.

### 5. ERASE / WRITE

While tuned to a channel, pressing this button will store or erase the channel from memory. The stored channel numbers are displayed in "GREEN" on the LCD display screen, and the non-stored channel numbers are in "RED".

### 6. Channel Up (□) Button

Use this button to increase the channel number to the desired channel and to scroll upward in menu options.

### 7. MUTE Button

Press this button to mute the audio while using wired headphones.

Pressing the button again restores sound to the previously set level.

### 8. ENTER Button

Used to select or switch a highlighted selection.

\*Function control is available on the unit and the remote control.



- 9. LEFT (◆) Button**  
Allows the user to shift left in the menu options.
- 10. MENU Button**  
Allows the user to access the main menu.
- 11. RETURN Button**  
Allows the user to exit the set up menu.
- 12. TV Mode Select**  
Switches certain function keys on the remote control for TV functions.
- 13. DISPLAY**  
Display Menu, This includes Title, Chapter, Time, Audio, Subtitle, Angle, Repeat, and Bookmark.
- 14. PAUSE Button (II)**  
DVD disc play will be paused. During Disc Playback, momentarily press the PLAY Button to Pause the Disc from the unit.
- 15. PREVIOUS (I◆◆)**  
Selects the previous chapter or track on a disc.
- 16. NEXT (◆◆I)**  
Selects the next chapter or track on a disc.
- 17. EJECT(▲) Button \***  
The disc will be ejected disc from disc mechanism.
- 18. FM Transmitter Frequency Select Button**  
(Selects 88.3MHz, 88.7MHz, 89.1MHz).
- 19. FM Transmitter On/Off Button.**  
Used to turn the FM Modulator on and off.
- 20. NUMBERS Buttons**  
Allows the user to enter the numbers 0 to 9 for selection of CD tracks, password and chapters.
- 21. VOLUME DOWN (-) Button**  
Use this button to decrease the volume level of the headphone jacks. It is also used to make picture adjustments in picture select mode.
- 22. VOLUME UP (+) Button**  
Use this button to raise the volume level of the headphone jacks. It is also used to make picture adjustments in picture select mode.  
**NOTE:** These buttons will not affect the volume of wireless headphones or a wired RF modulator. When using these devices the volume must be adjusted with the wireless headphone volume control or with your radio's volume control (see page 10, Wireless Headphones, or page 11, Wired FM Modulator).

\*Function control is available on the unit and the remote control.

**23. PICTURE SELECT Button**

Each time this button is pressed, the on screen picture adjustment display cycles through “adjustment bars” for BRIGHTNESS, CONTRAST, COLOR and TINT. Once the desired adjustment bar is displayed, use the VOLUME UP/DOWN buttons to adjust the setting. The display will automatically turn off if no adjustments are made within 6 seconds, or if any other button is depressed.

**24. RIGHT (▶) Button**

Allows the user to shift to the right in the menu options.

**25. SETUP Button**

Allows the user to select the DVD options (Language, Video, Audio, Rating, Exit) Press SETUP to activate this function. When finished press SETUP to exit the Setup Menu.

**26. CHANNEL DOWN (▼) Button**

Allows the user to scroll downward in the menu options.

**27. REPEAT Button**

Allows the user to repeat various portions of a DVD, CD or MP3 and displays the repeat menu (Chapter, Title, Disc, Off).

**28. A-B REPEAT Button**

Allows the user to repeat play of a DVD, CD or MP3 from point A to point B.

**29. VCP Mode Select Button**

Switches certain function keys on the remote control for VCP functions.

**30. DVD Mode Select Button**

Switches certain function keys on the remote control for DVD functions.

**31. STOP (■) Button**

DVD disc play will be stopped.

**32. PLAY Button (◆)Button\***

Press this button to activate the play mode while a disc is loaded into the disc compartment.

**33. Scan Forward (◆◆) Button**

Allows the user to search in a forward direction at 2,4, and 8 times the normal speed.

**34. Scan Backward (◆◆) Button**

Allows the user to search in a backward direction at 2, 4, and 8 times the normal speed.

\*Function control is available on the unit and the remote control.

## Turning the PROVD8 On or Off

1. Sliding the screen release lock forward will unlock the LCD screen and it will drop down slightly. Pivot the screen downward until a comfortable viewing angle is reached. The internal friction will hold the screen in position while the system is in use.
2. Pressing the power button on the unit or the remote control will turn the system on or off alternately. When in use the internal backlighting will illuminate the controls.
3. After the unit has been turned on and is displaying a picture, adjust the viewing angle, by pivoting the screen to optimize the picture quality.
4. Remember to turn the unit off and pivot the LCD to the locked position when not in use.

## CHANNEL TUNING SET UP

In order to easily access all available TV channels, it may be necessary to perform channel auto-programming whenever the vehicle's geographic location has changed, i.e. city to city, weak signal area.

Use the Source Select Button on the Remote Control to select TV mode.

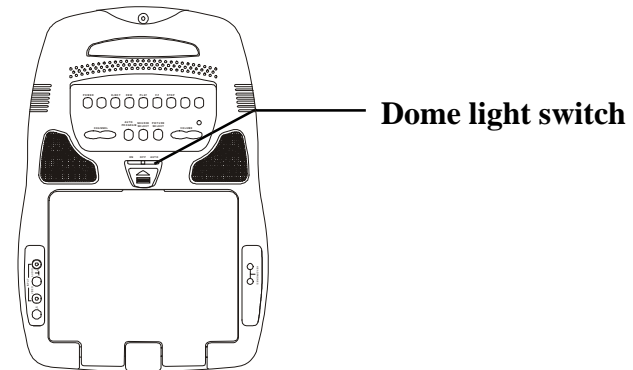
1. Press the AUTO MEMORY button on the Remote Control Unit or the AUTO PROGRAM button on the drop down video unit. You will see the TV cycle through all its channels. The built-in micro-processor will automatically store each channel that is actively broadcasting in your area.
2. (A) To tune only strong clear channels with the CHANNEL UP/DOWN buttons, press the SKIP/SEARCH button on the Remote Control Unit until "SKIP MODE ON" is displayed on the bottom of the screen. The TV will now tune only to strong active channels when the UP or DOWN buttons are used on the monitor or remote control.
3. (B) To tune weak or marginal channels with the CHANNEL UP/DOWN buttons, press the SKIP/SEARCH button on the Remote Control Unit until "SKIP MODE OFF" is displayed on the bottom of the screen. Tune to the desired channel using the CHANNEL UP/DOWN buttons or go directly to the channel by using the 0-9 buttons on the Remote Control.

4. To ERASE a channel, press the ERASE/WRITE button on the Remote Control Unit until "MANUAL MEMORY XX ERASE" is displayed on screen. To STORE a channel, press the button until the MANUAL MEMORY XX ADD is displayed on screen.

## Overhead Dome Lights

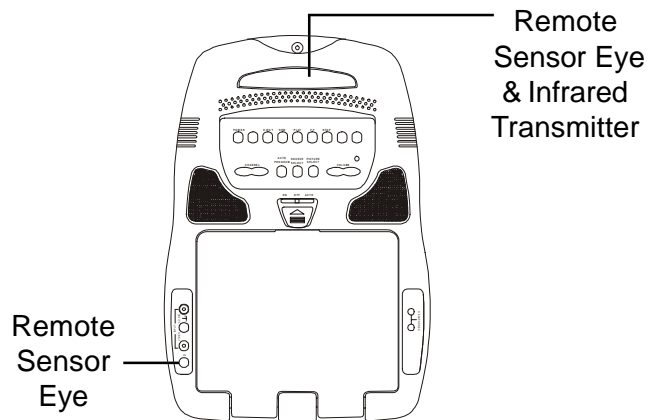
### Operation

The Dome lights integrated into the PROVD8 are controlled by a three position slide switch. Sliding the switch to the on position will turn the lights on. The off position will prevent the lights from turning on at all times, and the auto position will allow the lights to turn on and off with the vehicle's interior lighting. Do not leave the vehicle unattended with the dome light switch in the on position, as this could result in a discharged battery.



## Remote Sensor

The PROVD8 incorporates Infrared sensors which relay signals from the remote control to allow the unit to be controlled simply by pointing its remote control at the remote sensor eye. The repeater function allows control of auxiliary equipment such as an Audiovox Video Cassette Player. The infrared sensor can relay signals from most manufacturer's remote controls to its respective component connected to the Video input. In this case you must use the remote control supplied with the component.



## Accessories

### Wireless Headphones

The PROVD8 includes a built-in infrared transmitter for use with Audiovox wireless headphones (Part Number MVIRHS). The volume can then be adjusted using the controls on each headset. The wireless headphones must be used within a line of sight from the transmitter, as infrared transmissions, like visible light travel only in a straight line. See the documentation accompanying your Audiovox wireless headphones.

### Wireless Headset Special Features

- Automatic Level Control prevents input signal over loading.
- Uses high frequency infrared light to assure a clean signal for clear reception.

**Wired Headphones**

There are two 1/8" headphone jacks on the PROVD8 that can be used with any standard wired stereo headphones. These jacks are controlled by the volume up / down buttons on the PROVD8 remote control. Remove the protective plastic cover to access the jacks. Remember to replace the cover when the jacks are not in use.

**Wired FM Modulator**

The PROVD8 is equipped with an outboard RF modulator that allows you to listen to the PROVD8 audio signal by tuning your vehicle's radio to the selected frequency, (88.3, 88.7 or 89.1). This feature is accessed by using the FM transmitter buttons on the remote (On/Off, Select). Whenever the RF modulator is on, broadcast reception on the vehicle's radio will be poor. Switching off the FM modulator will allow normal radio reception.

Press the FM Transmitter On/Off switch to turn the FM Modulator on. The LCD screen will display the frequency setting of the FM Modulator. Pressing the Select button will change the Frequency of the FM modulator (88.3/88.7/89.1)

**AV1**

The AV1 input may be connected to a Video Cassette Player (VCP), video game system, or other audio / video device. To access the AV1 input, turn the PROVD8 on and press the source button on the PROVD8 or the Source button on the remote control until "AV1" is displayed on the screen. Turn the video source component on with its power button or remote control. The PROVD8 is now ready to play the audio and video signals from the source connected to the AV1 input.

**AUX**

A video game system, Camcorder or other audio / video device may be connected to the AUX Input jacks (see Figure 1. for the location of these jacks) To access the AUX source, turn the PROVD8 on and press the source button on the PROVD8 or the Source button on the remote control until "AUX" is displayed on the screen. Turn the video source component on with its power button or remote control. The PROVD8 is now ready to play the audio and video signals from the source connected to the AUX input.

## **DVD Basics**

To get the optimum use out of the DVD section, make sure you read this section completely.

## **Regional Coding**

Both the DVD player and disc are coded by region. These regional codes must match in order for the disc to play. If the codes don't match, the disc won't play. This unit's code is region 1. Other regional codes cannot be played in this unit. The unit will display "REGION CODE VIOLATION."

## **Types of Discs your DVD will play**

*DVD Discs* – DVDs which contain video.

*CD Discs* – Audio CDs containing musical or sound content only.

*MP3 Discs* – A disc that contains audio files (for example, a CD-R with downloaded MP3 files).

*VCD Discs* – VCD discs which contain video.

## **Loading and Playing Discs**

Before you load a disc, make sure that it is compatible with the player and that there is not a disc in the player already

**NOTE:** that the following Discs CANNOT be used with this player :

MiniDisc

CD-I, CD-ROM, CD-RW, DVD-ROM

## **To load and Play a Disc**

When you press the Power button the unit will turn on and display the source selected. Select DVD mode and insert the disc (Label Up) into the disc compartment. When the disc is half way in it will be automatically pulled in and play will begin.

**NOTE:** If the PROVD8 is not in DVD mode, it will not accept the disc. Do Not Force the disc into the slot as this could damage the mechanism.

## Settings and Adjustments

This chapter describes how to set and how to adjust using the on-screen SETUP menu.

### Using the Setup Display

Using the setup display, you can do the initial setup, adjust the picture and sound quality, and set the various outputs. You can also set a language for the subtitles and the setup display and limit play back by children.

**Note:** You can display the setup display only when the player is in stop mode.

- 1) Press the SETUP button to display the “setup menu” on the TV screen.



- 2) Select the main item you want using the cursor (◀▶) buttons, and then press the ENTER button.

### To Cancel Using the Setup Display

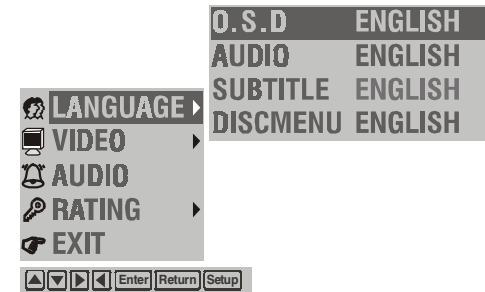
Press the SETUP button on the remote.

### To Return to the Previous Menu

Press the (◀) button or RETURN on the remote.

## Setting the Language for Display and Sound (LANGUAGE SETUP)

Press the SETUP button and using the (◀▶) buttons select “LANGUAGE”. Press the ENTER button. The Language Setup allows the user to set various languages for the on-screen display or sound.





### OSD (On-Screen Display) Language Menu

The OSD Language Menu allows the user to select the language for the on-screen display. Press ENTER and then use the (▼▲) buttons to select the desired language. The user can select either English, Français, Italiano, Español or Deutsch for the OSD language. Then press ENTER to confirm the selection.

### Audio Language Menu

The Audio language menu allows the user to choose the preferred audio language. Press ENTER and then use the (▼▲) buttons to select the desired language. English, French, Italian, Spanish or German. Then press ENTER to confirm the selection.

### Subtitle Menu

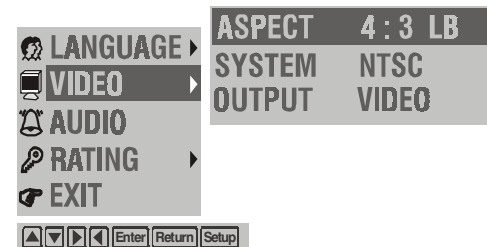
The Subtitle Language menu allows the user to choose the preferred language for subtitles. Press ENTER and then use the (▼▲) buttons to select the desired language. The user can select English, French, Italian, Spanish or German. Then press ENTER to confirm the selection.

### Disc Menu

The Disc Menu allows the user to choose the preferred language for the disc start menu. Press ENTER and then use the (▼▲) buttons to select the appropriate setting. The user can select English, French, German, Spanish, or Italian. Then press ENTER to confirm the selection.

### Settings for Video

Press the SETUP button and select VIDEO. The VIDEO SETUP allows you to adjust the display playback conditions.



## System Settings

### Aspect

This menu allows the user to select the aspect ratio of the monitor. Press ENTER and then use the (▼▲) buttons to select the appropriate setting.

4:3 LB (LETTER BOX) : This displays a wide picture with black bands on the upper and lower portions of the screen.

4:3 PS (PAN SCAN) : This displays the wide picture on the screen with a portion of the left and right sides removed.

16:9 WS (WIDE SCREEN) : This displays a picture with black bands on the upper and lower portions of the screen.

Then press ENTER to confirm the selection.

### System Menu

NTSC format only.

### Output

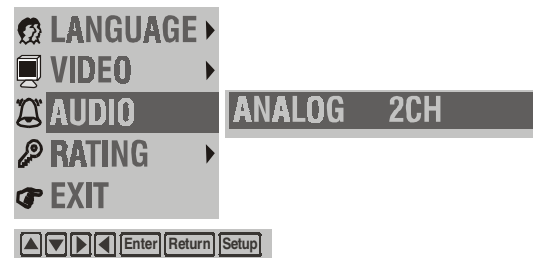
Video format only.

**NOTE:** Depending on the DVD, 4:3 LETTER BOX may be selected automatically instead of 4:3 PAN SCAN and vice versa.

## Settings for Audio

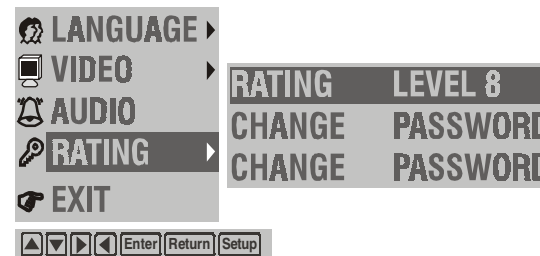
Press the SETUP button and select AUDIO.

The AUDIO menu is shown analog 2CH format.



## Settings for Rating (Parental Control)

This section of the SETUP Menu allows users to control the content of movie playback from 1 (Children) to 8 (Adult).



### **Limiting Playback by Children (Parental Control)**

The Parental Control function allows you to limit viewing to your preference.

1. Use the (▼▲) buttons to select RATING, then press ENTER.
2. Enter a password in 4 digits using the number buttons, then press the ENTER button.
3. Select LEVEL using the (▼▲) buttons.

LEVEL 8 : Adult

LEVEL 7

LEVEL 6

LEVEL 5

LEVEL 4

LEVEL 3

LEVEL 2

LEVEL 1 : Children

The lower the value, the more strict the limitation.

Press the ENTER button.

### **Changing and Canceling the Password**

To change the password, use the (▼▲) button to select CHANGE PASSWORD, then press ENTER. Enter the old password and then type in the new password using the number keys and press ENTER. To cancel the password, use the (▼▲) button to select CANCEL PASSWORD, then press ENTER. Enter the password then press ENTER. The OSD will display "PSW Canceled".

### **Playing DVD, CD and MP3 Disc**

Using the On-screen Icons display


The on-screen icons display contains many playback features. To see the icon display, use the DISPLAY button on the remote while a disc is playing. Each feature of the icon display is illustrated with an icon. Use the left/right arrow buttons (◀ ▶) on the remote to move through the different icons in the icon display. When an icon is highlighted, use the up/down arrow buttons (▼▲) on the remote to scroll through the choices displayed in the text box under the icon.


Remember, you can only access the icon display when you are playing a disc. Also, the icon display features are only available if the disc was created with that particular feature (i.e., if you select the Subtitle icon, you will not be able to change the subtitle language unless the author of the disc created the disc with different subtitle languages).

The invalid symbol appears on the screen when you press a button that does not have any function. To make the icon display disappear from the screen, press display on the remote unit it disappears.

## Playing DVD Disc




**Title**  Displays current title. Use the (◆ ◆) buttons to move the cursor to the icon, use the (▼▲) buttons to select required title, press ENTER to confirm the selection.

**Chapter**  Display current chapter. Use the (◆ ◆) buttons to move the cursor to the icon, use the (▼▲) or the number buttons to select the required chapter, press ENTER to confirm the selection.

**Time** Displays the elapsed time.



**Audio Channel**  Audio channel selection. Use the (◆ ◆) buttons to move the cursor to the icon, use the (▼▲) buttons to select the required audio channel.

## Q

Qsurround function. Use the (◆ ◆) buttons to move the cursor to the icon, use the (□ □) buttons to select QSURROUND function on or off.

## Subtitle



Display current subtitle language. Use the (◆ ◆) buttons to move the cursor to the icon, use the (▼▲) buttons to select the required subtitle language or switch on/off the subtitle.

## Angle



Multi-angle switch. Use this menu to select angles of pictures being played. Use the (◆ ◆) buttons to move the cursor to the icon, use the (▼▲) buttons to select required angle.

**NOTE:** Not all DVDs have this feature.

**NOTE:** The following functions can be accessed by pressing the DISPLAY button twice or by pressing the display button once and using the (◆) button or by pressing the REPEAT button.

## Repeat



Repeat play function. Use the (◆ ◆) buttons to move the cursor to the icon, use the (▼▲) buttons or REPEAT button to select required repeat play function.

Repeat Chapter → Repeat Title → Repeat Disc → Repeat Off

## Repeat A-B



Repeat play from A to B selected. Use the (◆ ◆) button to move the cursor to the icon, use the A-B button or ENTER button to select the A and B points.

Set Start Point A → Set End Point B → Cancel Repeat

Use the (▼▲) or A-B button to cancel.

## Bookmark



Set a bookmark. Use the (◆ ◆) buttons to move the cursor to the icon. At maximum five bookmarks (1,2,3,4,5) can be set. This operation is valid only when "BOOKMARK" is displayed on OSD. You may use the (◆ ◆) to move the cursor to a bookmark and press ENTER to jump to the position set and play.

## Playing CD Disc



## Track



Displays current track. Use the (◆ ◆) buttons to move the cursor to the icon, use the (◆ ◆) buttons or Number Keys (0 to 9) to select required track, press ENTER to confirm the selection.

## Time



Displays the elapsed time.

### Play mode



Play mode selection. Use the (◆ ◆) buttons to move the cursor to the icon, use the (▼▲) buttons to select any of the three play modes: Sequential (Off), Programmed and Random play modes.

### Repeat



Repeat play function. Use the (◆ ◆) buttons to move the cursor to the icon, use the (▼▲) buttons or REPEAT button to select required repeat play function.

Repeat Chapter → Repeat Disc → Repeat Off

### Repeat A-B



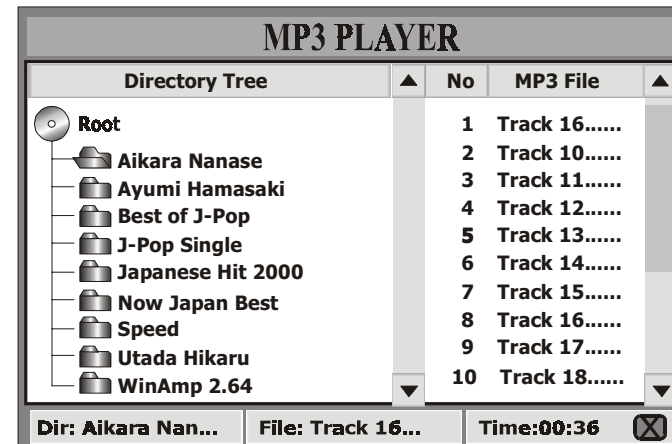
Repeat play from A to B selected. Use the (◆ ◆) buttons to move the cursor to the icon, use the ENTER or A-B button to select the required repeat play function.

Set Start Point A → Set End Point B → Cancel Repeat

Use the (▼▲) or A-B button to cancel.

### Playing MP3 Disc

MP3 is format for storing digital audio. An audio CD quality song can be compressed into the MP3 format with very little loss of quality, while taking up much less space. CD-R discs that have been encoded in MP3 format can be played on your DVD. For basic information about loading and playing discs, go to page 12. MP3 discs contain individual songs that can be organized into directories. When you play an MP3 disc, the MP3 info display appears as shown below.

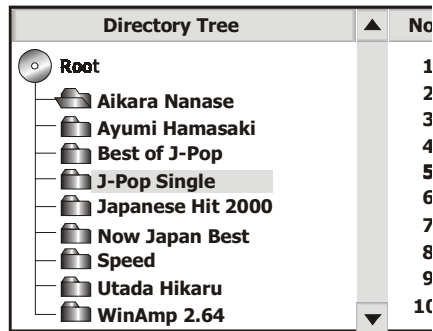


Playback begins automatically when you insert an MP3 disc into the player. The PROVD8 begins playing the songs in the order they were burned onto the disc.

### Selecting a directory

Because MP3 discs contain a large number of songs, these songs are divided into directories. To select a directory:

1. While a disc is playing, press the left arrow buttons (◀) to highlight the directory icon.
2. Press the up/down arrow buttons (▼▲) to go to the next or previous directory.
3. Press ENTER on the remote to go to that directory.



### Selecting a song

To select a specific song:

1. While the disc is playing, use the number buttons on the remote to enter the song number, or press the up/down arrow buttons (▼▲) to go to the next or previous song.
2. Press ENTER on the remote.

TIP  
You can also advance to the next song by pressing ►►, or go to the preceding song by pressing ◀◀ the remote.

| ▲ | No | MP3 File      | ▲ |
|---|----|---------------|---|
|   | 1  | Track 16..... |   |
|   | 2  | Track 10..... |   |
|   | 3  | Track 11..... |   |
|   | 4  | Track 12..... |   |
|   | 5  | Track 13..... |   |
|   | 6  | Track 14..... |   |
|   | 7  | Track 15..... |   |
|   | 8  | Track 16..... |   |
|   | 9  | Track 17..... |   |
|   | 10 | Track 18..... |   |

## Directory Display

This feature displays the directory that you have selected.



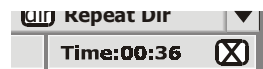
## File Display

This feature displays the selected track number which contains in the selected directory.



## Time Display

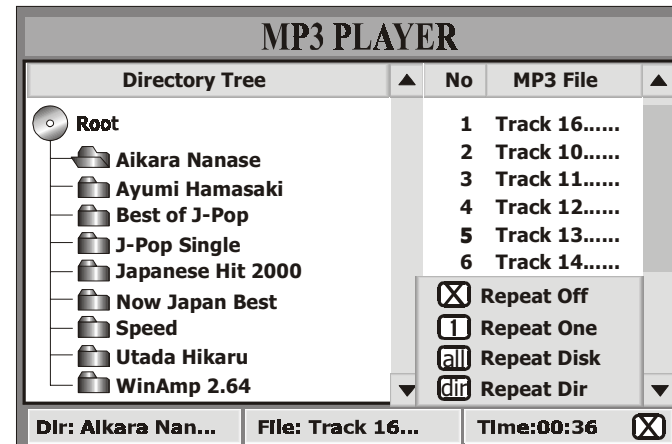
This feature displays the audio time for the length of the song. Each time you make a song, the time restarts from the beginning.



## Repeat Feature

The default mode for the Repeat feature is Off. There are 4 Repeat option:

1.  Repeat Off - All the songs will be playing once
2.  Repeat One - Repeat the song that is playing
3.  Repeat Disk - Repeat the disc that is playing
4.  Repeat Dir Repeat the directory that is playing





### To Use Repeat Feature:

1. While a disc is playing, press Repeat button or right arrow button (◆) on the remote to bring up the Repeat icon.
2. Press the up/down arrow buttons (▼▲) to highlight the Repeat option (Repeat Off, Repeat One, Repeat Disk, Repeat Dir).
3. Press ENTER on the remote. The selected repeat option will shown on the right side of Time Display.

## Troubleshooting

| <b>PROBLEM</b>   | <b>SOLUTION</b>  |
|--|--|
| Poor in vehicle radio reception (FM modulator installed) | <ul style="list-style-type: none"><li>• Check the condition of the vehicle's radio antenna.</li><li>• Verify that the antenna is fully raised.</li><li>• If a wired RF modulator has been installed, verify that it is turned OFF by using remote.</li></ul>   |
| IR sensor inoperative                                    | <ul style="list-style-type: none"><li>• Verify that the batteries in the remote are fresh.</li><li>• Verify that the remote sensor eye is not obstructed.</li><li>• Verify that the infrared transmitter is affixed over the sensor eye of the component to be controlled.</li></ul>   |
| Disc won't play  | <ul style="list-style-type: none"><li>• Insert a disc with the label side facing up.</li><li>• Check the type of disc you put into disc tray. This DVD only plays digital video discs, audio CDs and MP3s.</li><li>• Both the unit and the disc are coded by region. If the regional codes don't match, the disc can't be played. This DVD is Region Number 1.</li></ul> |
| Play starts, but then stops immediately                  | <ul style="list-style-type: none"><li>• The disc is dirty. Clean it.</li><li>• Condensation has formed. Allow player to dry out.</li></ul>   |

| <b>PROBLEM</b>                 | <b>SOLUTION</b>   |
|--------------------------------|---|
| No sound or distorted sound    | <ul style="list-style-type: none"> <li>• Make sure your DVD is connected properly. Make sure all cables are securely inserted into the appropriate jacks.</li> <li>• If you are using the IR headphones, make sure you turn on the IR power.</li> <li>• Make sure Modulator is ON and the proper Frequency has been selected.</li> </ul>                                      |
| Can't advance through a movie  | <ul style="list-style-type: none"> <li>• You can't advance through the opening credits and warning information that appears at the beginning of movies because the disc is programmed to prohibit that action.</li> </ul>   |
| The icon (Ⓞ) appears on screen | <p>The feature or action cannot be completed at this time because:</p> <ol style="list-style-type: none"> <li>1. The disc's software restricts it.</li> <li>2. The disc's software doesn't support the feature (e.g., angles)</li> <li>3. The feature is not available at the moment.</li> <li>4. You've requested a title or chapter number that is out of range.</li> </ol> |

| <b>PROBLEM</b>             | <b>SOLUTION</b>   |
|----------------------------|---|
| Picture is distorted       | <ul style="list-style-type: none"> <li>• The disc might be damaged. Try another disc.</li> <li>• It is normal for some distortion to appear during forward or reverse scan.</li> </ul>  |
| No forward or reverse scan | <ul style="list-style-type: none"> <li>• Some discs have sections that prohibit rapid scanning or title and chapter skip.</li> <li>• If you try to skip through the warning information and credits at the beginning of a movie, you won't be able to. This part of the movie is often programmed to prohibit skipping through it.</li> </ul> |

| Replacement Parts      |          | Specifications         |                          |
|------------------------|----------|------------------------|--------------------------|
| Remote Control         | 136B2154 | LCD Backlighting       | Edge Light Tube          |
|                        |          | Resolution             | 1440 x 234               |
| Left Protective Cover  |          | Pixels                 | 336,960                  |
| for IR Sensor          | 102B3689 | Operation Temperature  | 32 -140° F (0 - 60° C)   |
|                        |          | Storage Temperature    | -4 - 176° F (20 - 80° C) |
| Right Protective Cover |          | Backlight life         | 10,000 Hours             |
| for HeadphonesJacks    | 102B3690 | Video Display System   | NTSC/PAL                 |
|                        |          | Headphone Audio Output | 0.03W @ 16 ohms          |
|                        |          | Low Level Audio Output | 620 mvp-p                |
|                        |          | 1 kHz @ -15 dB         |                          |
|                        |          | Video Output           | 1.0Vp-p @ 75 ohms        |
|                        |          | Power Source           | 12V DC                   |

© Copyright 2002 Audiovox Electronics Corp. 150 Marcus Blvd. Hauppauge, NY 11788



## 36 MONTH LIMITED WARRANTY

*Applies to Audiovox Mobile Video Products*

AUDIOVOX ELECTRONICS CORP. (the Company) warrants to the original retail purchaser of this product that should this product or any part thereof, under normal use and conditions, be proven defective in material or workmanship within 36 months from the date of original purchase, such defect(s) will be repaired or replaced with reconditioned product (at the Company's option) without charge for parts and repair labor.

To obtain repair or replacement within the terms of this Warranty, the product is to be delivered with proof of warranty coverage (e.g. dated bill of sale), specification of defect(s), transportation prepaid, to the Company at the address shown below.

This Warranty does not extend to the elimination of externally generated static or noise, to correction of antenna problems, to costs incurred for installation, removal or reinstallation of the product, or to damage to tapes, discs, speakers, accessories, or vehicle electrical systems.

This Warranty does not apply to any product or part thereof which, in the opinion of the Company, has suffered or been damaged through alteration, improper installation, mishandling, misuse, neglect, accident, or by removal or defacement of the factory serial number/bar code label(s). THE EXTENT OF THE COMPANY'S LIABILITY UNDER THIS WARRANTY IS LIMITED TO THE REPAIR OR REPLACEMENT PROVIDED ABOVE AND, IN NO EVENT, SHALL THE COMPANY'S LIABILITY EXCEED THE PURCHASE PRICE PAID BY PURCHASER FOR THE PRODUCT.

This Warranty is in lieu of all other express warranties or liabilities. ANY IMPLIED WARRANTIES, INCLUDING ANY IMPLIED WARRANTY OF MERCHANTABILITY, SHALL BE LIMITED TO THE DURATION OF THIS WRITTEN WARRANTY. ANY ACTION FOR BREACH OF ANY WARRANTY HEREUNDER INCLUDING ANY IMPLIED WARRANTY OF MERCHANTABILITY MUST BE BROUGHT WITHIN A PERIOD OF 48 MONTHS FROM DATE OF ORIGINAL PURCHASE. IN NO CASE SHALL THE COMPANY BE LIABLE FOR ANY CONSEQUENTIAL OR INCIDENTAL DAMAGES FOR BREACH OF THIS OR ANY OTHER WARRANTY, EXPRESS OR IMPLIED, WHATSOEVER. No person or representative is authorized to assume for the Company any liability other than expressed herein in connection with the sale of this product.

Some states do not allow limitations on how long an implied warranty lasts or the exclusion or limitation of incidental or consequential damage so the above limitations or exclusions may not apply to you. This Warranty gives you specific legal rights and you may also have other rights which vary from state to state.

**U.S.A. :** AUDIOVOX ELECTRONICS CORPORATION, 150 MARCUS BLVD., HAUPPAUGE, NEW YORK 11788 • 1-800-645-4994

**CANADA :** CALL 1-800-645-4994 FOR LOCATION OF WARRANTY STATION SERVING YOUR AREA

© Copyright 2002 Audiovox Electronics Corp. 150 Marcus Blvd. Hauppauge, NY 11788



For Customer Service  
Visit Our Website At  
**www.audiovox.com**  
Product Information, Photos,  
FAQ's Owner's Manuals

128-6258