

CANON

FAX-L350

SOFTWARE

MANUAL

Before you begin the installation: a checklist

To ensure a smooth and successful installation, take some time before you begin to plan and prepare for the installation process.

Connect the printer to the parallel port on your computer.

The printer must be connected to your computer to install the software.

Turn on computer. Start Windows.

Close applications.

If any Windows applications (including any virus checkers) are open, close the applications. With the applications closed, you ensure that the software installs properly.

NOTE

- If you are using Windows NT, you must log on as Administrator or have Administrator privileges before installing the software. If you do not have Administrative privileges for Windows NT, ask your system administrator to install the Canon FAX suite software on your PC.
-

Installing the Software

To install the software:

1. Insert the installation disk into your disk drive.
2. If AutoRun is enabled, the installation starts automatically. Click Next to proceed.



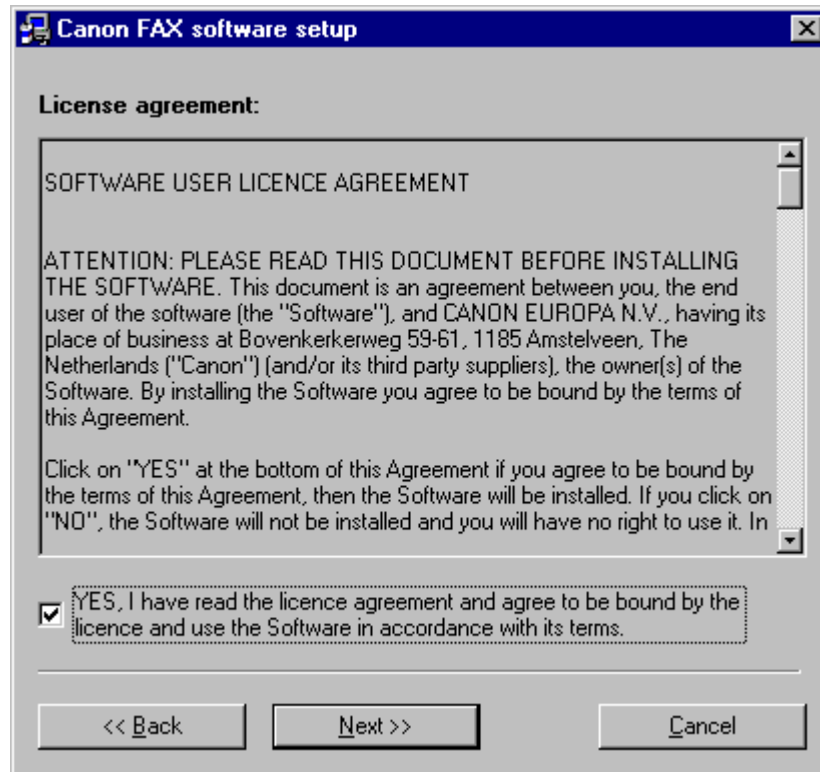
If installation does not start automatically:

- On the Windows taskbar, click Start, and then click Run.
- In the Run dialog box, type the following command and click OK (where D: is your disk drive containing the installation disk).

D:\SETUP\SETUP.EXE

3 . Follow the on-screen instructions to complete the installation process.

Click “Yes”.



During installation, follow these guidelines:

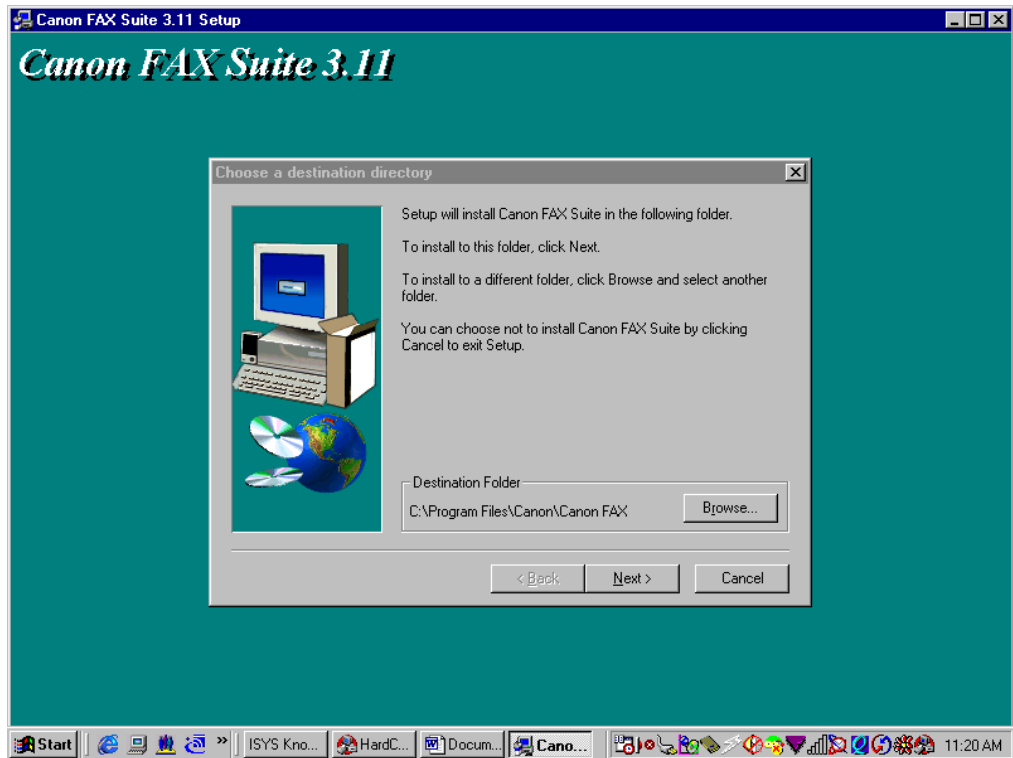
- Click Next to move from one dialog box to the next.
- Make sure you click Next or OK on the current dialog box,
- Be sure to wait for Windows to complete each setup step. If you hear the computer working, wait until it is done.



4. The CD will auto install the Canon Fax Suite 3.11. Click Next to proceed.



5. Select which folder you want to install the Fax Suite. Click Next to proceed.



6. When the setup is finished, if prompted, restart Windows.





The installation program determines whether Windows needs to be restarted on your system.