

For more information about Tiger Electronics, our products and special promotions,
please visit our web site at: www.tigertoys.com

TIGER
ELECTRONICS, LTD.



©, TM, & © 1999 Tiger Electronics, Ltd.
All rights reserved.
980 Woodlands Parkway,
Vernon Hills, Illinois 60061, U.S.A.

© Disney
Based on the "Winnie the Pooh" works.
© A.A. Milne and E.H. Shepard.
Visit the Disney web site at www.Disney.com

PRINTED IN CHINA
870450001IWTI-01



Poppin' Piano™



INSTRUCTION MANUAL

Ages 2 & Up
Model 87-045





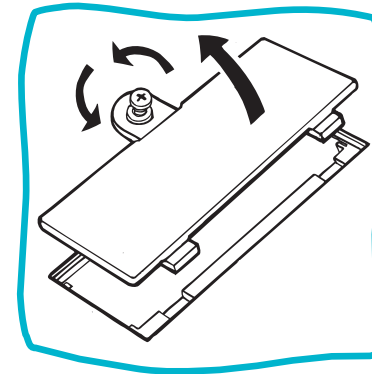
★ MESSAGE TO PARENTS:

Thank you for bringing home the Poppin' Piano. This is a wonderful educational product for your child. What could be more exciting than learning from Pooh and his friends from the 100 Acre Wood?

Your child will learn about colors, music, song recognition, identification and much more! These skills are critical to a preschooler's cognitive development. Please read the instructions carefully and learn about the different features of the Poppin' Piano, so that you will be able to easily explain them to your child.

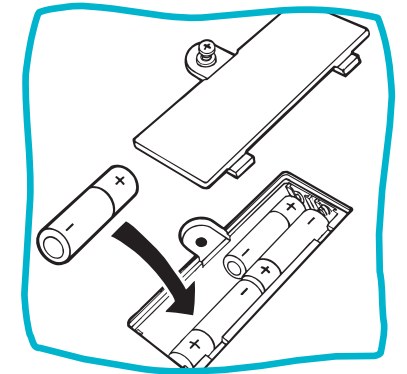
★ INSERTING BATTERIES (Batteries should be installed by an adult):

The Poppin' Piano requires 4 x 1.5V "AA" or LR6 batteries which should be installed on the bottom of the unit. Open the battery door by loosening the screw counter clockwise with a screwdriver. Open battery door by pulling back.



Insert 4 x 1.5V "AA" or LR6 batteries according to the diagram on the inside of the battery compartment.

Once the batteries are in place, close the battery door and tighten the screw with a clockwise motion.

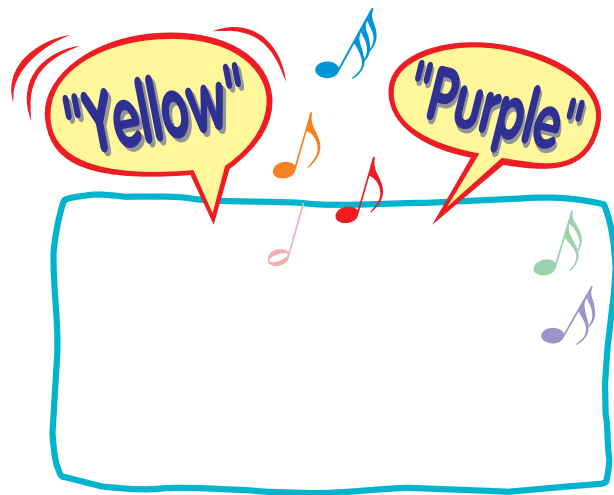


To ensure proper function:

- Do not mix old and new batteries.
- Do not mix alkaline, standard or rechargeable batteries.
- Battery installation should be done by an adult.
- Non-rechargeable batteries are not to be recharged.
- Rechargeable batteries are to be removed from the toy before being charged (If removable).
- Rechargeable batteries are only to be charged under adult supervision (If removable).
- Only batteries of the same or equivalent type as recommended are to be used.
- Batteries are to be inserted with the correct polarity.
- Exhausted batteries are to be removed from the toy.
- The supply terminals are not to be short-circuited.
- Cable tie is not part of toy. Remove the cable tie before you give this toy to your child.

★ HOW TO USE THE POPPIN' PIANO:

Kids will learn all about their colors and the characters of the 100 Acre Wood with the Poppin' Piano. Each time a key is pressed, Pooh or one of his loveable friends will POP up. For instance, when the yellow key is pressed, Rabbit will POP up. The unit features three different modes of play: Colors, Piano Sounds, and Melodies.



2

★ THREE MODES OF PLAY:

Turn ON the unit by sliding the button to one of the three different modes:

- COLOR** -- Each time a key is pressed the specific character will POP UP telling the child the color of the key. The unit teaches 8 different colors.
- PIANO** -- The unit plays 8 different piano sounds (Do, Re, Me, Fa, So, La, Ti, Do). Kids can learn how to play 8 melodies by following along with the color coded songbook included. (see pages 4-16)
- MELODIES** -- Kids will love to sing along with the 8 recorded melodies. Press a key once and the melody will play. Each key plays its own melody. The melodies are listed above each key on the unit (Pooh Theme Song, Happy Birthday, Row Row Row Your Boat, Polly Wolly Doodle, Old Mac Donald, Twinkle Twinkle Little Star, Rock-A-Bye Baby)

The Poppin' Piano features an attached carrot microphone so kids can sing along with Pooh and all the characters of the 100 Acre Wood. There is a holder on the side of the unit to store the microphone.

The Poppin' Piano does not feature a volume dial. The sound level of the toy is pre-set.



3



Winnie The Pooh

Deep in the Hun - dred Ac - re Wood Where

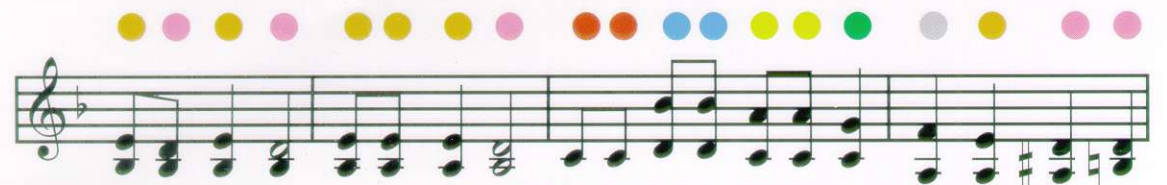
Chris - to - pher Ro - bin plays _____ You'll

find the en - chant - ed neigh - bor - hood of

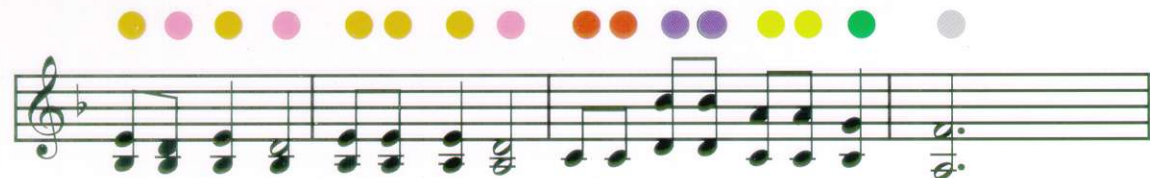
Chris - to - pher's Child - hood Days _____ A

Don-key named Ee-yore is his friend. And Kan-ga and lit - tle Roo ____ There's

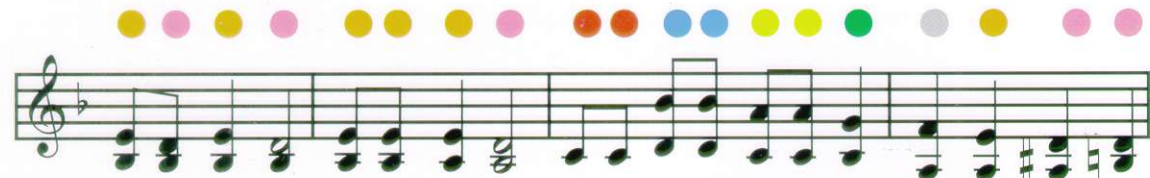
Rab-bit and Piglet and there's Owl, but most of all Winnie the Pooh



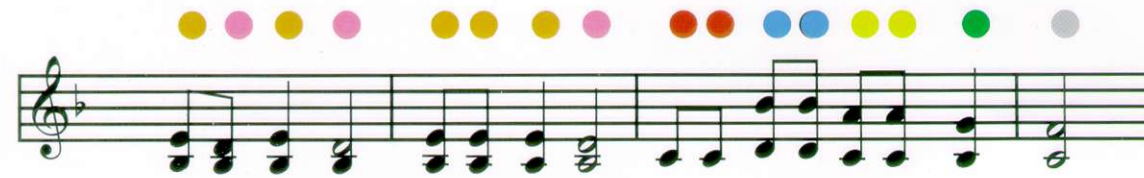
Winnie the Pooh, Winnie the Pooh, Tub-by little cub-by all stuffed with fluff, he's



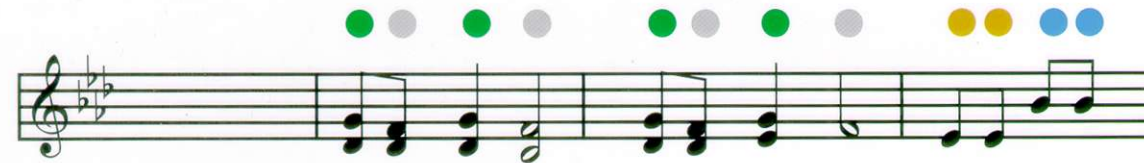
Winnie the Pooh, Winnie the Pooh, Wil-ly Nil-ly Sil-ly old bear



Winnie the Pooh, Winnie the Pooh, Tub-by little cub-by all stuffed with fluff, he's



Winnie the Pooh, Winnie the Pooh, Wil-ly Nil-ly Sil-ly old bear.



Winnie the Pooh, Winnie the Pooh, Wil-ly Nil-ly



Sil-ly old bear _____

Row, Row, Row, Your Boat



Polly Wolly Doodle





well, my fair - y Fay, For I'm going to Lou' Si-an-a for to



see my Su-zi- an-na, Sing-ing Pol-ly Wol-ly Doo-dle all the day.

Old MacDonald



Old Mac - Don - ald had a farm.



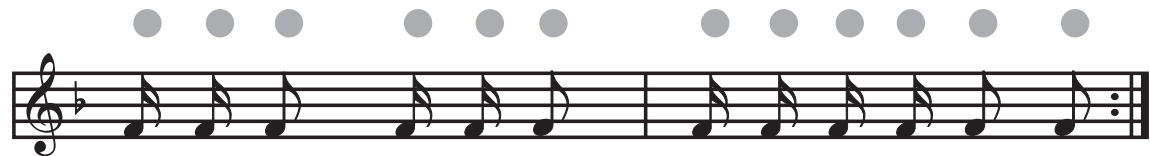
E - I - E - I - O; And on his farm he



had a cow, E - I - E - I - O; With a



moo - moo here and a moo - moo there,



here a moo, there a moo, ev - 'ry where a moo - moo,



Old Mac - Don - ald had a farm, E - I - E - I - O.

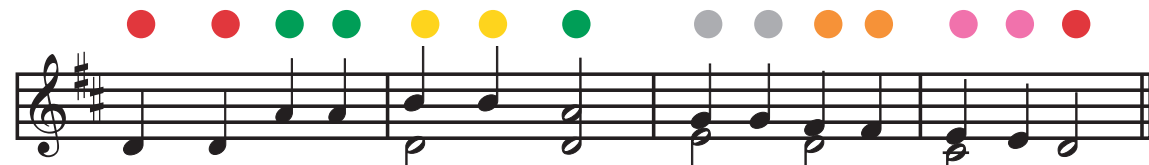
Twinkle, Twinkle, Little Star



Twin-kle, twin-kle, lit - tle star, How I won - der what you are.

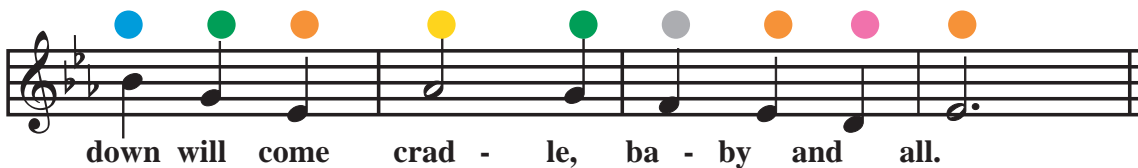
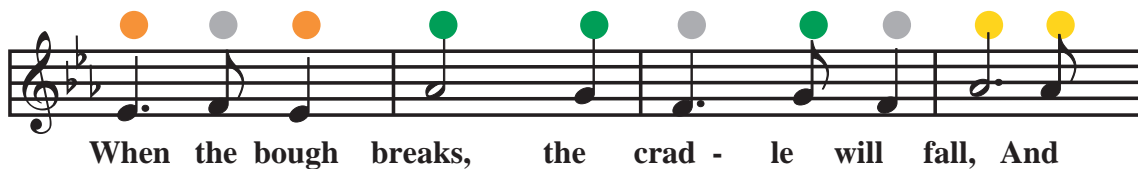
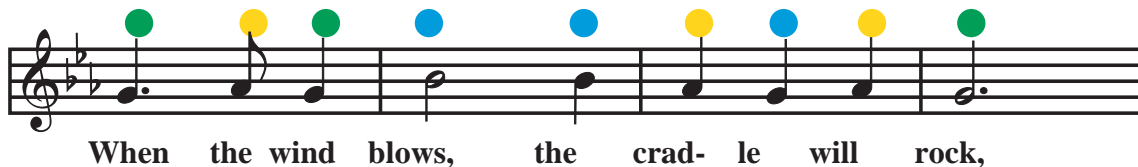
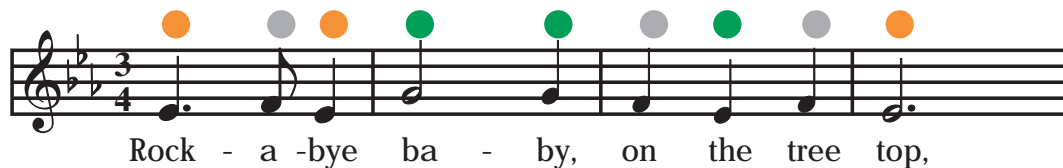


Up a - bove the world so high, Like a dia - mond in the sky.



Twin-kle, twin-kle, lit - tle star, How I won - der what you are!

Rock-A-Bye Baby



★ 90-DAY LIMITED WARRANTY

Tiger Electronics, Inc. (Tiger) warrants to the original consumer purchaser of this product that the product will be free from defects in materials or workmanship for 90 days from the date of original purchase. This warranty does not cover damage from accident, negligence, improper service or use or other causes not arising out of defects in materials or workmanship.

During this 90-day warranty period, the product will either be repaired or replaced (at Tiger's option) without charge to the purchaser, when returned with proof of the date of purchase to either the retailer or to Tiger.

Product returned to Tiger without proof of the date of purchase or after the 90-day warranty period has expired, but prior to one year from the original date of purchase, will be repaired or replaced (at Tiger's option) for a service fee of U.S.\$11.00. Payments must be by check or money order payable to Tiger Electronics, Inc.

The foregoing states the purchaser's sole and exclusive remedy for any breach of warranty with respect to the product.

All product returned must be shipped prepaid and insured for loss or damage to:

Tiger Repair Department
1000 N. Butterfield Road, Unit 1023
Vernon Hills, IL 60061 U.S.A.

The product should be carefully packed in the original box or other packing materials sufficient to avoid damage during shipment. Include a complete written description of the defect, a check if product is beyond the 90-day warranty period, and your printed name, address and telephone number.

THIS WARRANTY IS IN LIEU OF ALL OTHER WARRANTIES AND NO OTHER REPRESENTATIONS OR CLAIMS OF ANY NATURE SHALL BE BINDING ON OR OBLIGATE TIGER IN ANY WAY. ANY IMPLIED WARRANTIES APPLICABLE TO THIS PRODUCT, INCLUDING WARRANTIES OF MERCHANTABILITY AND FITNESS FOR A PARTICULAR PURPOSE, ARE LIMITED TO THE NINETY (90) DAY PERIOD DESCRIBED ABOVE. IN NO EVENT WILL TIGER BE LIABLE FOR ANY SPECIAL, INCIDENTAL, OR CONSEQUENTIAL DAMAGES RESULTING FROM POSSESSION, USE, OR MALFUNCTION OF THIS TIGER PRODUCT.

Some states do not allow limitations as to how long an implied warranty lasts and/or exclusions or limitations of incidental or consequential damages, so the above limitations and/or exclusions of liability may not apply to you. This warranty gives you specific rights, and you may also have other rights which vary from state to state.