



Full Size Mechanical Keyboard

Model: MKB-135B

QuickGuide

English

www.adesso.com

①

LIMITED WARRANTY

ADESSO provides one year limited warranty for the quality of all its products in materials and workmanship.

During this period, ADESSO will repair or replace all merchandise, which proved to be defective. However, ADESSO will not warranty any product which has been subjected to improper freight Handling, shipping abuse, neglect or unauthorized repair or installation. The warranty also will not cover products installed with Non-ADESSO components and product with broken sealed and assembly trace. After replacement of RMA, ADESSO reserves the right to request the total cost of the replacement products with broken seals or assembly trace.

If you discover a defect, Adesso will, at its option, repair or replace the product at no charge to you, provided you return it during the warranty period with transportation charges pre-paid to Adesso. You must contact Adesso at support@adesso.com for a Return Merchandise Authorization number (RMA) prior to returning any product. For each product returned for warranty service, please include your name, shipping address (no P.O. Box), telephone number, copy of the bill of sale as proof of purchase and have the package clearly marked with your RMA number.

SUPPORT

We have listed most of our FAQ's (Frequently Asked Questions) at: <http://www.adesso.com/faqs.asp>. Please visit our FAQ Service & Support pages before you contact our E-mail or Telephone Support.

Email Support: If our FAQ's do not help you resolve your issues, please email support@adesso.com.

Telephone Support:
Toll Free: (800) 795-6788
9:00AM to 5:00PM PST Monday - Friday

②

INTRODUCTION

The mechanical switches provide a tactile sound feedback, making typing an enjoyable experience. Once users begin typing, the tactile sound click creates a positive response, making typing accurate and efficient. The tiny snap users feel through their fingertips and the click sound heard confirms each keystroke. The integrated hi-speed USB 2.0 hub and audio/microphone jack clear up desk space, and are ideal for USB mobile devices, headsets or microphones. This keyboard is ideal for gamers, professionals and personal use.

FEATURES

- Windows 104 keys layout
- Lifecycle of 20 million mechanical keystrokes
- Integrated with two USB 2.0 hubs and audio/microphone jack
- Connection: USB port
- Storage temperature: -4°F to 140°F
- Operating temperature: 32°F to 122°F
- Dimensions: 18.25" x 6.0" x 1.25"
- Weight: 2.8 lbs.
- Cable length: 6 feet
- Approvals: FCC, CE and ROHS

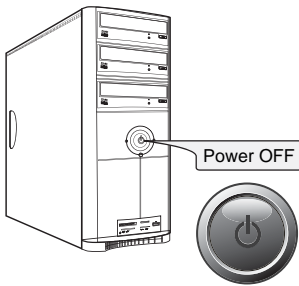
REQUIREMENTS

- Hardware: IBM, Pentium II class compatible or higher
- Operating system: Windows 7, Vista, XP and below
- Available USB port

③

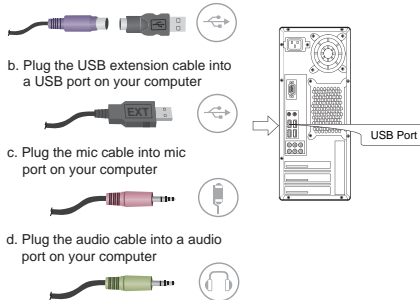
INSTALLATION

1. Make sure that your computer is turned OFF before installing this keyboard. Your wired keyboard requires a USB port.



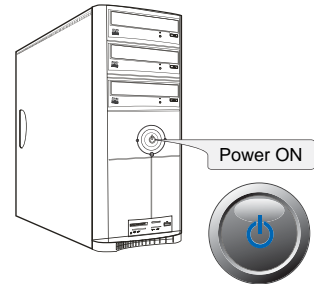
④

2. a. Plug the Keyboard PS/2 cable into a PS/2 port on your computer. You can use a PS/2 to USB adapter if the PS/2 port is not available.



⑤

3. Turn ON your computer and your operating system will detect the device automatically. This device is plug and play, no driver required.



⑥

USING THE USB 2.0 HUB AND AUDIO/MICROPHONE JACK

Integrated USB hubs and audio/microphone jack

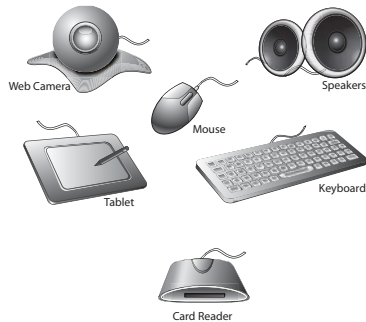


1. Attach your USB device into USB 2.0 port hub of your keyboard.
2. Attach audio/microphone device into jack
3. Your Windows system will detect the device and it is ready to use

⑦

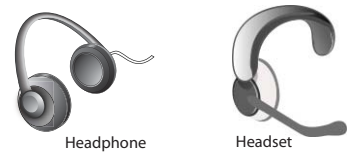
NOTE:

The integrated hi-speed USB 2.0 hub provides a 480 Mbps data transfer rate and 500mA power current, ideal for USB mobile devices, such as a mouse, trackball, joystick, flash drive, digital camera, iPod, iPhone, MP3 Player and more.



⑧

The integrated audio and microphone jack gives convenience in using the headset or microphone device, it clears up valuable desk space.



WARNING:

Long-term repetitive use of any keyboard could cause injury to user. Adesso recommends users avoid excessive use of this or any keyboard.

⑨

V1.1 122509