



**CASE 5700 Series**  
**USER Manual**

*[www.rosewill.com](http://www.rosewill.com)*

## Contents

■ Features Descriptions -----	P.2
■ Installation	
1.Opening Chassis -----	P.3
2.Installing Motherboard -----	P.4
3.Installing 5.25" Device-----	P.5
4.Installing 3.5" Device-----	P.6
5.Installing 3.5" HD-----	P.7
6.Clearing Air Filter-----	P.8
7.Installing Case Feet-----	P.9
8.Cables management-----	P.10
9.USB port Audio Port-----	P.11
■ Information -----	P.12

## Features Descriptions



No screw needed for 5.25" device



No screw needed for 3.5" HDD



Vertical sliding HDD cage



Easy clean filter



120mm rear Fan



Front I/O port with protecting cover

# Installation

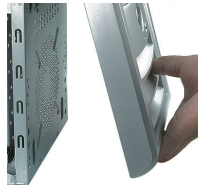
## 1. Opening Chassis



1.1  
Loosen screws on the back panel.



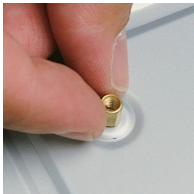
1.2  
Pull the side panel back then pull out.



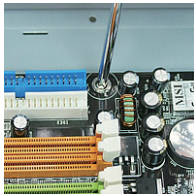
1.3  
Pull out the front panel from the bottom.

# Installation

## 2. Installing Motherboard



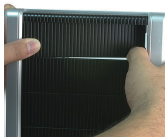
- 2.1  
Locate and align the screw holes on the motherboard and chassis; place the motherboard at the correct position and then screw copper motherboard stand-off onto chassis's metal shell.



- 2.2  
Secure the motherboard on the motherboard stand-off with screws.

# Installation

## 3. Installing 5.25" Device



3.1  
Push to remove drive cover



3.2  
Find rails for 5.25" devices. A 5.25" device needs 2 rails. (1R+1L)



Step.1

3.3  
Attach rails to both sides of the 5.25" device



Step.2



3.4  
Insert the railed 5.25" device  
into the 5.25" drive bay

# Installation

## 4. Installing 3.5" Device



4.1  
Push to remove drive cover



4.2  
Find rails for 3.5" devices.  
A 3.5" device needs 2 rails.



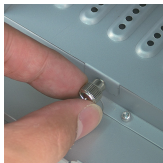
4.3  
Secure rails to both sides of the  
3.5" device with screws.



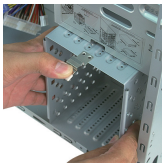
4.4  
Insert the railed 3.5" device  
into the 3.5" drive bay.

# Installation

## 5. Installing 3.5" HDD



5.1  
Take off the thumb screw holding the HDD cage



5.2  
Push the handle down and slide out the HDD cage



5.3  
Find rails for 3.5" HDD. A 3.5" HDD needs 2 rails.



5.4  
Attach rails to both sides of the 3.5" HDD.



5.5  
Insert the railed 3.5" HDD into the 3.5" HDD drive bay



5.6  
Slide the HDD cage back and fasten the thumb screws.



# Installation

## 6. Cleaning air filter



6.1  
Push the filter and the filter will spring out



6.2  
Pull out the filter to clean

# Installation

## 7. Installing case feet



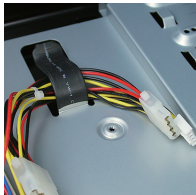
7.1

Lay case down and insert case feet into the bottom

# Installation

## 8. Installing case feet

- We offer 2 ways to have your cables in order.



Cable hook



Belts

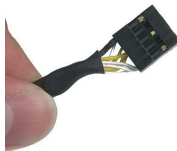
# Installation

## 9. USB Port & Audio Port

- Find USB and Audio cables and plug them to your motherboard. Please refer to your motherboard user manual.



USB



Audio

## Thank you for purchasing a High-Quality Rosewill Product.

Please register your product at : **[www.rosewill.com](http://www.rosewill.com)**  
for complete warranty information and future support for your product.

If you have any question while using our products, please visit our website : **[www.rosewill.com](http://www.rosewill.com)**  
for latest driver & user manual or feel free to contact us at [feedback@rosewill.com](mailto:feedback@rosewill.com)

**Support Phone Number: 800-575-9885**

**Support Email: [techsupport@rosewill.com](mailto:techsupport@rosewill.com)**



*Rosewill*

[www.rosewill.com](http://www.rosewill.com)