



**GX-D1051**

**GX-D1081**

**10/100/1000Mbps Gigabit Ethernet Switch**

**Quick Start Guide**

## Introduction

Thank you for purchasing the ASUS GX-D1051 / GX-D1081 Gigabit Ethernet Switch! The GX-D1051 / GX-D1081 feature dedicated 10/100/1000Mbps connection, auto-negotiation and auto-MDI/MDIX capabilities, and store-and-forward switching architecture.

## Features

- 5 x 10/100/1000Mbps Gigabit Ethernet ports for GX-D1051
- 8 x 10/100/1000Mbps Gigabit Ethernet ports for GX-D1081
- Auto-MDI/MDIX and auto-negotiation on all ports
- Full or half duplex mode at 10/100Mbps transmit speed
- Full duplex mode at 1000Mbps transmit speed
- Full wire speed reception and transmission
- Jumbo frame up to 12KB for GX-D1051 and 16KB for GX-D1081
- 1K for GX-D1051 and 4K for GX-D1081 MAC address with automatic address learning and aging
- Fanless design for quiet operation
- IEEE 802.3x flow control in full duplex mode, back pressure in half duplex mode
- Desktop placement or wall mounting
- Supports ASUS Green Network feature, link down, and cable length detection.



---

Support VIP port: Port 1 has higher priority over the other ports.

---

## Package contents

Before installing the GX-D1051 / GX-D1081 Switch, check your package for the following items.

- ASUS GX-D1051 / GX-D1081 Switch x 1
- Power adapter x 1
- Support CD x 1
- Mounting screws x 2; screw size: M3\*19mm (B) W-NI 2#



---

Contact your retailer if any of the items is damaged or missing.

---

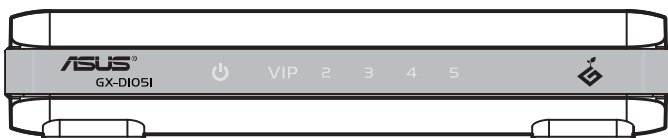
# Technical specifications

<b>Data transmission rates</b>	10/100/1000Mbps
<b>Ports</b>	5 RJ-45 10/100/1000Mbps Gigabit Ethernet ports for GX-D1051 8 RJ-45 10/100/1000Mbps Gigabit Ethernet ports for GX-D1081
<b>Protocol</b>	IEEE 802.3 10Base-T IEEE 802.3u 100Base-TX IEEE 802.3ab 1000Base-T IEEE 802.3x Full duplex flow control Jumbo frame support: 12KB for GX-D1051, 16KB for GX-D1081
<b>Performance</b>	Bandwidth: 10Gbps for GX-D1051, 16Gbps for GX-D1081 Forward rate: 14,800 packets/sec. (10Mbps), 148,000 packets/sec. (100Mbps), 1,488,000 packets/sec. (1000Mbps) Packet buffer memory: 832K bits for GX-D1051, 1M bits for GX-D1081 MAC address table: 1K for GX-D1051, 4K for GX-D1081
<b>Switching mode</b>	Store-and-forward
<b>Environmental specifications</b>	Operating temperature: 0°C-40°C Operating humidity: 5%-95% (non-condensing) Storage temperature: 0°C-70°C
<b>LED indicators</b>	POWER, Link/Act
<b>Power adapter</b>	12W, DC external: 12V 1A
<b>Dimensions</b>	158mm (L) x 98mm (W) x 30mm (H)
<b>Placement options</b>	Desktop placement, wall mounting
<b>Safety &amp; EMI</b>	CE, FCC, LVD, C-Tick, VCCI

# Hardware

## Front panel

The front panel of GX-D1051 / GX-D1081 includes LED indicators that show realtime status of the switch.



GX-D1051 front panel



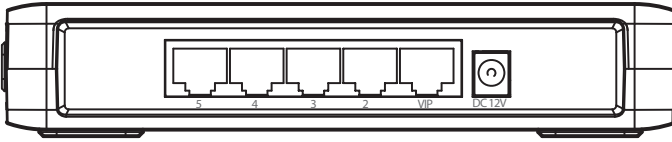
GX-D1081 front panel

## LED indicators

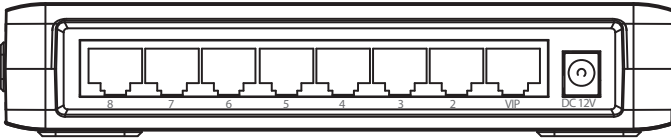
LED	Color	Status	Description
POWER	Green	ON	The switch is ON.
		OFF	The switch is OFF.
Link/Act	Green	ON	The corresponding port is connected and a valid link is established at 1000Mbps.
		Blinking	A valid link is established and data is being transmitted or received at 1000Mbps.
		OFF	No valid link is established.
	Amber	ON	The corresponding port is connected and a valid link is established at 10/100Mbps.
		Blinking	A valid link is established and data is being transmitted or received at 10/100Mbps.
		OFF	No valid link is established.

## Rear panel

The rear panel of GX-D1051 / GX-D1081 includes Gigabit Ethernet ports and the DC IN input port.



GX-D1051 rear panel



GX-D1081 rear panel

## Placement options



- **DO NOT** place any device on top of the switch.
- Leave enough space around the switch for adequate ventilation. Ensure that the switch is placed in a location that meets the environmental specifications. See page 3 for details.

## Desktop placement

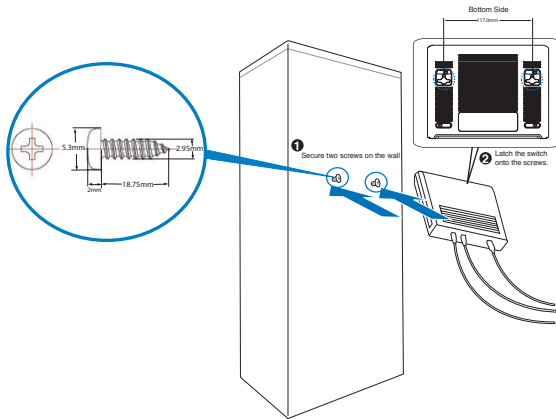
Put the switch on a flat and stable surface.

## Wall mounting

Mount the switch on a wall with the supplied mounting screws.

To mount the switch on a wall:

1. Secure the two supplied screws into the wall.
2. Latch the hooks of the switch onto the screws.



Wall mounting

## Connecting to network devices



- Use either cross-over or straight-through cables to connect other network devices such as PCs, bridges, switches, hubs, and repeaters.
- The length of the network cables should not exceed 100 meters (328 feet).

## Connecting to end nodes

The GX-D1051 / GX-D1081 Switch is used as a standalone switch to connect end nodes such as PCs and printers and form a small workgroup. With auto MDI/MDIX capability, each Ethernet port on this switch automatically detects the type of cable plugged to it and adjusts itself to the speed and duplex of the device to which it is connected.

The Link/Act LED lights green / amber or blinks green / amber when a valid link is established on the corresponding port.

## Connecting to switches or hubs

The Gigabit Ethernet ports on this switch act as uplink ports to connect other switches or hubs and form a bigger switched network.

The Link/Act LED lights green / amber or blinks green / amber when a valid link is established on the corresponding port.

## Powering on

To power on the GX-D1051 / GX-D1081 Switch:

1. Connect the AC power cord to the AC adapter.
2. Connect the DC output plug on the AC adapter to the DC IN input port on the rear panel of the switch.
3. Plug the AC power cord into a power outlet.

