

QUICK START GUIDE

WR602/WRB603 PUBLIC ALERT RADIO

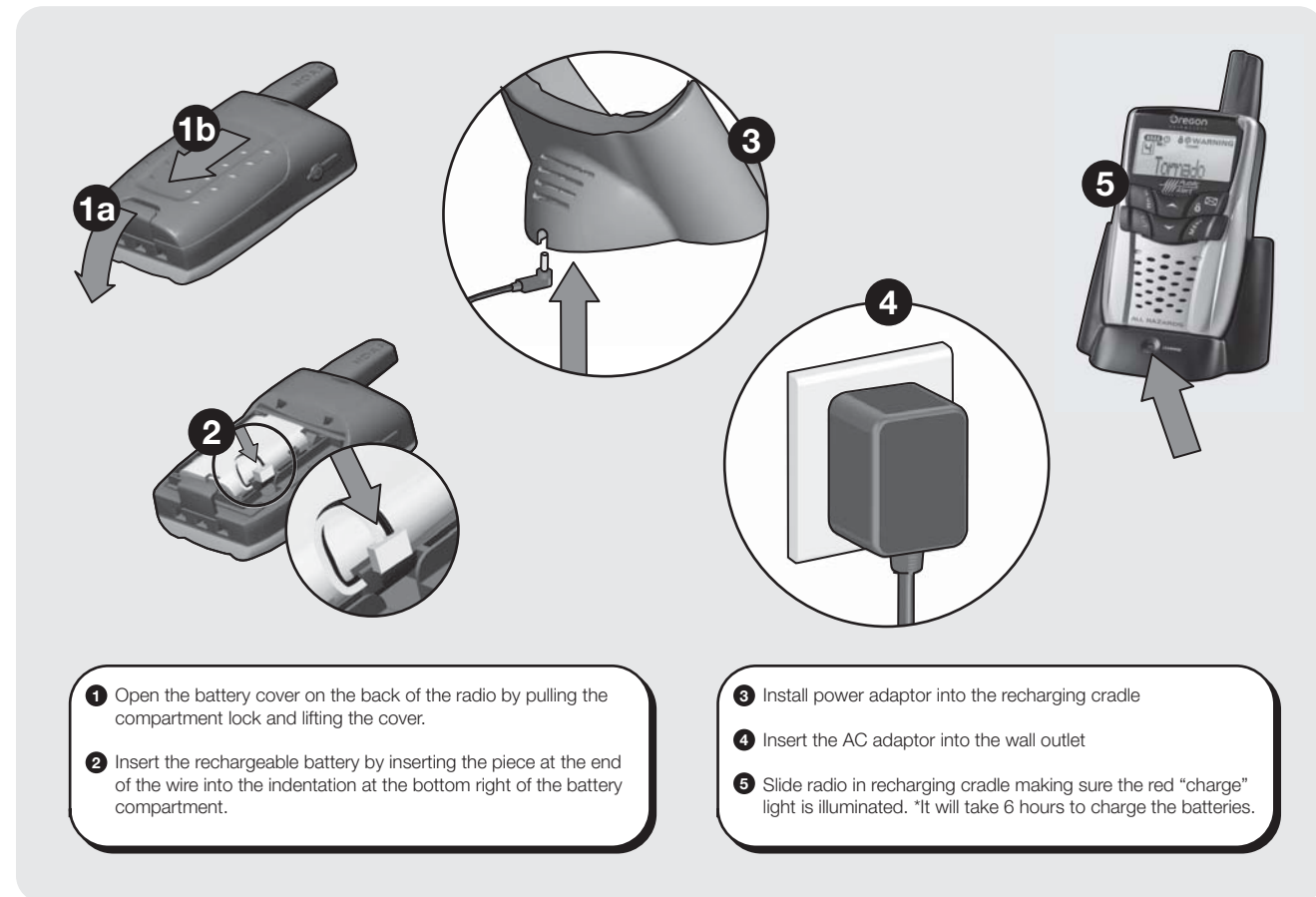
NOTE: If you have the WRB603, the recharging cradle is replaced by the Weather Docking Station. Please use Section C, D, and E to setup the WR602 Public Alert Radio handset.

A UNPACK

Make sure that you have all of the parts shown here before setting up your Public Alert Radio.



B INSTALL BATTERIES AND RECHARGE RADIO



- 1 Open the battery cover on the back of the radio by pulling the compartment lock and lifting the cover.
- 2 Insert the rechargeable battery by inserting the piece at the end of the wire into the indentation at the bottom right of the battery compartment.

- 3 Install power adaptor into the recharging cradle
- 4 Insert the AC adaptor into the wall outlet
- 5 Slide radio in recharging cradle making sure the red "charge" light is illuminated. *It will take 6 hours to charge the batteries.

C TURNING ON THE UNIT FOR THE FIRST TIME



NOTE: Make sure you complete each step in its entirety and without interruption. This is a timed process. If you do not complete each step in order and confirm each setting within one minute, the WR602 handset will automatically exit the setup process and go into Standby mode. If this happens, press the reset button to start the setup process again. It is essential that you complete this setup process to ensure your unit is ready to receive all warning messages.

Instruction	Button(s) to Press	LCD Display
Open the battery cover and press the RESET button located on the top right hand corner of the battery compartment.		12/24hr
Press the UP arrow to select 12 or 24 time format and then press the MENU button to confirm.		12/24hr
Press the UP arrow to select PM/AM HOUR setting and press the MENU button to confirm.		PM 12:00
Press the UP arrow to select MINUTE setting and press the MENU button to confirm.		PM 12:00
Press the UP arrow to select month/date or day/month and press the MENU button to confirm.		m/d or d/m
Press the UP arrow to select YEAR and press the MENU button to confirm.		1/1/2005
Press the UP arrow to select MONTH and press the MENU button to confirm.		1/1/2005
Press the UP arrow to select DAY and press the MENU button to confirm.		1/1/2005
Press the UP arrow to select LANGUAGE (E=English / F=French / S=Spanish) and press the MENU button to confirm.		LANG: E/F/S
Press the DOWN arrow to select "Set Channel" Mode and press MENU to select.		set channel
Press the DOWN arrow to select "Auto" channel seeking and press the EXIT button to confirm and press EXIT button again to get back to time mode.		channelA
If you know the specific Channel (1 through 7) that is applicable to your location, press the UP or DOWN arrow button to select. Press the EXIT button to confirm and press EXIT button again to get back to time mode.		channel1
Press the POWER button to switch to the NOAA ON mode. Your radio will automatically search the appropriate channel that is in your area. Once you hear the 24-hour weather broadcast on your radio, your radio has successfully found the appropriate channel. If you set your channel manually, the 24-hour weather broadcast will start immediately.		NOAA On 13:26 Su
Press the POWER button to switch to the NOAA STANDBY mode. The radio is in Standby and will switch to ON when a NOAA alert message is received.		NOAA Standby 13:26 Su

D

PROGRAMMING YOUR SAME CODE

1 What is a SAME code?

SAME (Specific Area Message Encoding) is a digital code that is sent with many warnings, watches, and emergency messages to your weather radio. The SAME code includes the type of event (Tornado, flash flood, thunderstorm, etc...), the appropriate geographic area (county), and how long the event is valid.

2 Why is this important to me?

The SAME code includes the applicable geographic area for all messages or alerts. By programming your specific 6-digit SAME code for your area, your radio will alert you ONLY for emergencies for the counties you programmed. This will allow you to be warned of any nearby hazards within your vicinity.

3 How many counties can I program into my weather radio?

The Oregon Scientific Weather Radio can accept up to 9 different SAME county codes. You can also select ALL counties in your area, if you want to receive alerts from your county and all surrounding counties.

4 Lookup your county's and surrounding counties' SAME codes and write them down

To contact the NWS by telephone: 1 Phone 1-888-NWR-SAME (1-888-697-7263) 2 Follow prompts through a simple voice menu.

To obtain the NWS radio channels and SAME codes on the internet: 1 Locate www.nws.noaa.gov/nwr/indexnw.htm 2 Click the state for which information is needed.

Instruction	Button(s) to Press	LCD Display
While in the NOAA Standby mode, press and hold the MENU button for 3 seconds.		
Press the UP arrow button to move to the SET LOCATION screen. Press the MENU to select.		
Press the UP arrow button to move to the "CO:All" storage LOCATION screen and press the MENU button to activate the "ALL" value.		
IF YOU WANT TO RECEIVE ALERTS FROM ALL COUNTIES. STOP NOW! Press the EXIT button twice to go back to the NOAA Standby mode.		

You can start programming your SAME code(s) in two different ways:

- Using the Radio's list of SAME codes by State name and County name or
- Programming each digit of the 6-digit SAME code you searched on the NWS website or phone number.

**You can program up to nine counties on your radio.*

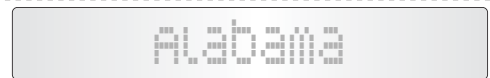
Press the UP button to turn off the All counties setting. Press MENU to confirm change.		
Press the UP arrow button and the MENU button to start programming your SAME code.		

5 Program by State Name and County Name

Press the MENU button to select the Name setting.



Use the UP or DOWN buttons to scroll through the list of States and select your state and press the MENU button.



Use the UP or DOWN buttons to scroll through the list of Counties. Select your COUNTY and press the MENU button.



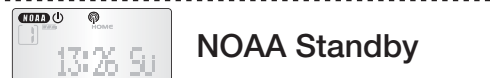
Press the MENU button, the appropriate 6-digit SAME code for that COUNTY will be displayed next to the STORAGE LOCATION number.



Press the UP button to select and PROGRAM the next STORAGE LOCATION using the last four steps.



Once you are finished, press the EXIT button to return to the NOAA Standby screen.



6 Program 6-digit SAME code from the NWS

Press the MENU button to select the FIPS setting.



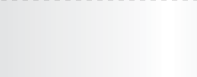
The first digit will be blinking. Press the UP or DOWN button to select the first number.



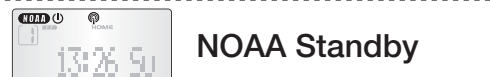
Press MENU to confirm and select the second number and repeat.



After setting the last digit, the cursor will bring you to the STORAGE LOCATION code.



Press the EXIT button twice to go back to the NOAA Standby screen.



E

USING AND TESTING YOUR PORTABLE WEATHER RADIO

Using your Portable Weather Radio

At Home: Be warned of approaching inclement weather so you can take all the necessary precautions before the storm or tornado arrives! Reception can vary from room to room. Moving even a few feet can turn a weak signal into a strong one. Place the radio near a window, preferably on the second floor, away from other electronic devices. You should always confirm the successful reception of the 24-hour weather broadcast before deciding where to place the recharging cradle in the house.

Away from Home: When traveling, boating or performing other outdoor activities, be warned of all hazards that might suddenly head your way. Make sure your radio is set to "TRAVEL" mode. Your radio will automatically scan for the channel with the strongest signal. This will allow you to receive all messages in the vicinity you are currently located.

Required Weekly Tests (RWT)

Your local NWR office normally runs tests each Wednesday between 10 a.m. and noon local time. Tests may occur at other days and times when there is a threat of severe weather in the listening area or for other reasons. The Portable Weather Radio will activate and will sound off a loud tone and a short message explaining the test will begin.

Example test message: "This is the National Weather Service Office in (local city name). The preceding signal was a test of the Weather Radio Station (...call sign...)'s public warning system."

Tests of this signal and receivers' performance are normally conducted by the National Weather Service. If there is a threat of severe weather, the test will be postponed to the next available good-weather day. Reception of this broadcast, and especially the warning alarm, will vary at any given location. Where more than one state is involved, the state name will always precede the names of the counties in that state. If the test was missed during the scheduled time frame, then the test normally takes place between 10 a.m. to noon on the next available good-weather day. If you have any questions regarding alarm tests or to verify if a test was conducted, contact the programming office of the NOAA Weather Radio station.