



MP 880W Modem

User Guide



Rev 1.5

»» Contents

Introducing the MP Modem	11
Network connections	12
Accounts and coverage	12
Supported GSM radio frequencies	13
Connection methods	13
Virtual serial port	13
VPN support for RNAP	14
Software	14
MP Modem Manager	15
Documentation	15
Getting Started	17
Plan your MP modem installation	18
Where do you want to install your MP modem?	18
What type of connection(s) do you plan to use?	18
Required equipment	20
Package contents	20
Additional required equipment	20
System requirements	21
MP modem accessories	21
Hardware and Software	
Installation	23
Installation overview	23
MP modem housing	23
Connector panel	24
GPS and I/O options	24
Overview of installation steps	24

>> Contents

Install the MP modem	25
Step 1—Mount the MP modem	25
Select a location for the MP modem	25
Mounting the MP modem	25
Ground the MP modem	26
Step 2—Mount the antennas and install the cables	27
Main RF antenna	27
GPS antenna	28
AP antenna (MP 595880W only)	28
Antenna locations	28
Install the antennas and cables	29
Step 3—Install the power harness	29
Power connector	30
Power connector (Molex) pinouts	30
Vehicle installation	30
Ignition sense on/off wiring	30
Ignition sense options	31
Ground the power harness	32
Power connections	32
Correct wire splicing	32
Crimp terminals	32
Office installation	33
Step 4—Connect the MP modem to computer cable	33
Serial connector (DB9) pinouts	34
Install the USB, Ethernet or serial cable	34
I/O port connections	35
Step 5—Install the software	35
Step 6—Configure your account	35
Insert the SIM Card	36
Set up connection profiles	37
Create a profile	37
Step 7—Test the system	39
MP Modem Operation	41
Turning the MP modem on and off	41

Status indicators	42
Reset the MP modem	43
3G Watcher software.	43
3G Watcher Help	43
Launching 3G Watcher	44
Connection to MP Physical Interface	44
Changing the Physical Interface	44
3G Watcher window	45
Establishing connections.	45
Auto-Connect for DUN	46
Configuring the Router Functions	47
Non-NAT mode	48
NAT mode	48
MP modem networking basics in NAT mode	49
Enable the router	50
File and resource sharing over LAN	50
Static IP and TCP/UDP port forwarding in NAT mode	50
Set up static IP addresses	50
Set up TCP/UDP port forwarding	51
Configuring the Wireless Access Point	53
Overview	53
Unlock MP modem configuration	54
Change the password (optional)	54
Enable the wireless access point	55
Set the SSID.	55
Configure the security settings.	56
Configure security on the client computers	57
Reset the MP modem to factory defaults	57

- Configuring the MP Modem to Report GPS and I/O Data59**
 - GPS configuration and reporting 59
 - GPS protocols and commands 60
 - GPS display in 3G Watcher 60
 - GPS TAIP quick reference 61
 - I/O device installation and configuration 61
 - Connector pinouts 62
 - Port specifications 62
 - Digital input devices 62
 - Example: panic button connections..... 63
 - Digital output devices 64
 - Analog input devices 64
 - Example: analog sensor connections..... 65
 - I/O configuration using AT or 3G Watcher commands 65
 - Analog input setup 66
 - Digital I/O setup 67

- Sending Data to Your Network Application69**
 - Configure the MP modem to route data to a server..... 69
 - Report frequency timers 69
 - Monitoring and Tracking configuration 72
 - IP Addressing 72
 - The problem created by Network Address Translation 73
 - Solutions to the NAT problem..... 74
 - Retrieve the Unique Mobile Device ID..... 74

- Support and Warranty75**
 - Technical support 75
 - Warranty..... 75

- Technical Specifications77**
 - Regulatory, radio frequency and electrical specifications 77
 - Environmental specifications 78



Weight and dimensions 78

Host interfaces 79

Other interfaces 79

GPS specifications 79

I/O port characteristics..... 79

3G Watcher software..... 80

Wireless access point specifications..... 80

Regulatory Information81

 Canada 81

 U.S.A. 81

 Important Note 82

 FCC Caution..... 82

 Approved antennas..... 82

 European Union..... 82

Important Notice

Due to the nature of wireless communications, transmission and reception of data can never be guaranteed. Data may be delayed, corrupted (i.e., have errors) or be totally lost. Although significant delays or losses of data are rare when wireless devices such as the Sierra Wireless modem are used in a normal manner with a well-constructed network, the Sierra Wireless modem should not be used in situations where failure to transmit or receive data could result in damage of any kind to the user or any other party, including but not limited to personal injury, death, or loss of property. Sierra Wireless accepts no responsibility for damages of any kind resulting from delays or errors in data transmitted or received using the Sierra Wireless modem, or for failure of the Sierra Wireless modem to transmit or receive such data.

Safety and Hazards

Do not operate the Sierra Wireless modem in areas where blasting is in progress, where explosive atmospheres may be present, near medical equipment, near life support equipment, or any equipment which may be susceptible to any form of radio interference. In such areas, the Sierra Wireless modem **MUST BE POWERED OFF**. The Sierra Wireless modem can transmit signals that could interfere with this equipment.

Do not operate the Sierra Wireless modem in any aircraft, whether the aircraft is on the ground or in flight. In aircraft, the Sierra Wireless modem **MUST BE POWERED OFF**. When operating, the Sierra Wireless modem can transmit signals that could interfere with various onboard systems.

Note: Some airlines may permit the use of cellular phones while the aircraft is on the ground and the door is open. Sierra Wireless modems may be used at this time.

The driver or operator of any vehicle should not operate the Sierra Wireless modem while in control of a vehicle. Doing so will detract from the driver or operator's control and operation of that vehicle. In some states and provinces, operating such communications devices while in control of a vehicle is an offence.

Limitation of Liability

The information in this manual is subject to change without notice and does not represent a commitment on the part of Sierra Wireless. SIERRA WIRELESS AND ITS AFFILIATES SPECIFICALLY DISCLAIM LIABILITY FOR ANY AND ALL DIRECT, INDIRECT, SPECIAL, GENERAL, INCIDENTAL, CONSEQUENTIAL, PUNITIVE OR EXEMPLARY DAMAGES INCLUDING, BUT NOT LIMITED TO, LOSS OF PROFITS OR

Patents

REVENUE OR ANTICIPATED PROFITS OR REVENUE ARISING OUT OF THE USE OR INABILITY TO USE ANY SIERRA WIRELESS PRODUCT, EVEN IF SIERRA WIRELESS AND/OR ITS AFFILIATES HAS BEEN ADVISED OF THE POSSIBILITY OF SUCH DAMAGES OR THEY ARE FORESEEABLE OR FOR CLAIMS BY ANY THIRD PARTY.

Notwithstanding the foregoing, in no event shall Sierra Wireless and/or its affiliates aggregate liability arising under or in connection with the Sierra Wireless product, regardless of the number of events, occurrences, or claims giving rise to liability, be in excess of the price paid by the purchaser for the Sierra Wireless product.

Portions of this product may be covered by some or all of the following US patents:

5,515,013	5,629,960	5,845,216	5,847,553	5,878,234
5,890,057	5,929,815	6,169,884	6,191,741	6,199,168
6,339,405	6,359,591	6,400,336	6,516,204	6,561,851
6,643,501	6,653,979	6,697,030	6,785,830	6,845,249
6,847,830	6,876,697	6,879,585	6,886,049	6,968,171
6,985,757	7,023,878	7,053,843	7,106,569	7,145,267
7,200,512	7,295,171	7,287,162	D442,170	D459,303
D599,256	D560,911			

and other patents pending.

This product includes

technology licensed from:

QUALCOMM® 3G

Licensed by QUALCOMM Incorporated under one or more of the following United States patents and/or their counterparts in other nations:

4,901,307	5,056,109	5,101,501	5,109,390	5,228,054
5,267,261	5,267,262	5,337,338	5,414,796	5,416,797
5,490,165	5,504,773	5,506,865	5,511,073	5,535,239
5,544,196	5,568,483	5,600,754	5,657,420	5,659,569
5,710,784	5,778,338			

Manufactured or sold by Sierra Wireless or its licensees under one or more patents licensed from InterDigital Group.

Licensed under the following Nortel Networks Limited patents:

United States patent numbers: 5128925, 5398247

France patent numbers: 2665993, 2653959, 2659812, 2745091

Copyright

© 2008 Sierra Wireless. All rights reserved.

Trademarks

AirCard[®] and “Heart of the Wireless Machine[®]” are registered trademarks of Sierra Wireless. Watcher[®] is a trademark of Sierra Wireless, registered in the European Community. Sierra Wireless, the Sierra Wireless logo, the red wave design, and the red-tipped antenna are trademarks of Sierra Wireless.

Windows[®] is a registered trademark of Microsoft Corporation.

QUALCOMM[®] is a registered trademark of QUALCOMM Incorporated. Used under license.

Other trademarks are the property of the respective owners.

Contact Information

Support Desk:	Phone:	1-877-231-1144
	Hours:	5:00 AM to 5:00 PM Pacific Time, Monday to Friday, except US Holidays
	E-mail:	support@sierrawireless.com
Sales Desk:	Phone:	1-510-624-4200 1-604-232-1488
	Hours:	8:00 AM to 5:00 PM Pacific Time
	E-mail:	MobileandM2Msales@sierrawireless.com
Post:	Sierra Wireless America 39677 Eureka Drive Newark, CA USA 94560 Sierra Wireless 13811 Wireless Way Richmond, BC Canada V6V 3A4	
Fax:	1-510-624-4299 1-604-231-1109	
Web:	www.sierrawireless.com	

Consult our website for up-to-date product descriptions, documentation, application notes, firmware upgrades, troubleshooting tips, and press releases:

www.sierrawireless.com

Revision History

Revision number	Release date	Changes
1.1	August 2007	<ul style="list-style-type: none">Removed detail about AT command parameters, instead directing users to the <i>MP 3G Modems AT Command Reference manual</i>. (document #2130810.)Updated regulatory information for Canada and the USA. (See “Regulatory Information” on page 77.).
1.2	January 2008	<ul style="list-style-type: none">Added NAT and WAP information.
1.3	February 2008	<ul style="list-style-type: none">Added battery cable information under power connection.
1.4	March 2008	<ul style="list-style-type: none">Added more Regulatory information. (See “Regulatory Information” on page 77.)

1: Introducing the MP Modem

- Accounts and coverage
- Connection methods
- Virtual serial port
- VPN support for RNAP
- Software
- Documentation



Note: Do not connect the MP modem to a USB port on a computer before installing the software. (See “Step 5—Install the software” on page 37.)

The Sierra Wireless MP modem provides a wireless network connection for portable computers in vehicles or offices.

If the MP modem is installed in a vehicle, it typically is mounted in the trunk and connected to a notebook computer in the passenger compartment. A radio frequency (RF) antenna mounted on the roof of the vehicle enables the MP modem to communicate through a wireless network to a host computer.

A built-in Global Positioning System (GPS) module provides location and heading data that can also be remotely monitored.

The MP modem has a rugged design that allows it to withstand the vibration, shock, humidity, and extremes of temperature experienced in the normal operation of police, emergency, utility, and field service vehicles.

You can use the network connection provided by the MP modem to access shared data, browse the Internet, and send and receive e-mail and text messages. The MP modem also allows for sensors, gauges, and alarms (such as panic buttons) to be installed in vehicles and remotely monitored from a central location.

Network connections

The MP modem operates over the following networks, with connectivity and speed dependent on your service provider and account:

- High Speed Uplink Packet Access (HSUPA) — up to 2.0 megabits per second (Mbps)
- Universal Mobile Telecommunications System (UMTS) — up to 384 kilobits per second (kbps)
- Enhanced Data GSM Environment (EDGE)—up to 236 kbps
- General Packet Radio Service (GPRS)—up to 56 kbps
- Circuit switched (dial-up) data connections

Once a connection is established, you can open your browser and connect to web sites and access other Internet services such as e-mail.

Accounts and coverage

You must set up an account with a service provider for each MP modem you install. After installing the MP modem software, you must configure it to use an account.

The service provider supplies a Subscriber Identity Module (SIM) card—sometimes called a smart card or smart chip—for each account. The SIM card provides the MP modem's identity on the network. It contains account information and must be inserted in the MP modem for the MP modem to operate. (See "Insert the SIM Card" on page 38.)

The ability of the MP modem to obtain service and the type of service obtained in any area is determined by several factors:

Network proximity and HSUPA availability To obtain service, you must be within the coverage area of a network operating in one of the radio frequency bands supported by the MP modem. The type of connection depends on the service available in that area. For example, there are areas with UMTS service in which HSUPA has not yet been implemented.

Roaming If you are within the coverage of a network operated by a different service provider, your ability to obtain service depends on whether a roaming agreement exists between your service provider and the one operating your current local network. There may be additional fees for roaming service. Contact your reseller or service provider for information.

Account provisions Your account may restrict usage of certain networks or may limit your connection time or data transmission.

Supported GSM radio frequencies

The MP modem has tri-band capability on HSUPA and UMTS networks, operating on:

- 850 MHz
- 1900 MHz
- 2100 MHz

and quad-band capability on EDGE and GPRS, operating on:

- 850 MHz
- 900 MHz
- 1800 MHz
- 1900 MHz

Connection methods

You can connect the MP modem to a USB, Ethernet (RJ45), or serial (DB9) port on a computer. When connected to a USB or Ethernet port, the MP modem behaves like a network card. When connected to a serial port, the MP modem behaves like a dial-up modem.

The MP modem also supports connections via IEEE802.11b/g (MP595). See [Chapter 6](#) for more details.

Virtual serial port

The MP modem supports four virtual serial ports (VSPs). Three are reserved for internal use by the MP modem. The remaining VSP, which is called Sierra Wireless Application Interface 2, is assigned to a specific COM port that varies between users. This VSP can be used, for example, to send AT commands, or to run applications such as HyperTerminal®.

Special MP modem modes such as GPS that are supported on a serial port are also available on the virtual port. For example, with the virtual port enabled, a mapping application on your computer that normally listens for GPS messages on a serial port listens for those same messages on the virtual port.

The MP modem VSPs are available on both USB and Ethernet interfaces. For information on enabling a virtual serial port, see the *MP 3G Modems AT Command Reference* manual (document #2130810).

VPN support for RNAP

This feature allows for the exchange of Remote Network Access Protocol (RNAP¹) data between the MP modem and a remote server accessible only through a Virtual Private Network (VPN) connection. When using this feature, you must have 3G Watcher running on the computer.

The MP modem sends RNAP data over Ethernet or USB to 3G Watcher on the computer. 3G Watcher places the RNAP data in a User Datagram Protocol/Internet Protocol (UDP/IP) packet and sends it over the VPN connection to the server. When 3G Watcher receives a UDP/IP packet containing RNAP data over the VPN connection, it disassembles the packet and sends the RNAP data to the MP modem.

You can enable this option using 3G Watcher software or AT commands. See the 3G Watcher online help and the *MP 3G Modems AT Command Reference* manual (document #2130810) for details.

Software

The MP modem comes with the following software:

- 3G Watcher, the software for the MP modem which allows you to manage and monitor your connections.
- The driver that forms the interface between the MP modem and your Windows operating system.
- The firmware that is stored in non-volatile memory.

The MP modem has an embedded radio module (a Mini Card 8775), also made by Sierra Wireless, Inc. There are two firmware programs on the MP modem—one stored on the controller board of the MP modem and one on the radio module.

The firmware was loaded into the radio module and controller board when the MP modem was assembled. As new

1. RNAP is a Sierra Wireless proprietary protocol that encapsulates the MTP data that is sent to and from the MP modem. It ensures that both the MP modem and remote host recognize the data packets. See *The Monitoring and Tracking Protocol Guide* on page 18.

versions of the software and firmware are released, they are posted at www.sierrawireless.com.

MP Modem Manager

MP Modem Manager is a web-based diagnostic and management tool that allows you to remotely monitor and configure a fleet of MP modems. With MP Modem Manager you can:

- Diagnose and troubleshoot field issues.
- Identify MP modem firmware versions and remotely upgrade firmware.
- Organize MP modems into groups for table viewing of modem and network status.
- Configure GPS settings.

MP Modem Manager software is available free of charge. To request this software, complete and submit the form at:

https://www.sierrawireless.com/product/mp_modem_mgr_request.aspx.

Documentation

This *User Guide* describes how to:

- Install the MP modem hardware.
- Connect the radio and GPS antennas.
- Connect a notebook computer and other input/output (I/O) devices.
- Install the software.
- Configure the software to use an account and SIM card.
- Interpret the LEDs on the MP modem and the indicators in the 3G Watcher software.
- Configure the MP modem to report GPS and/or I/O data (from sensors, gauges, or panic buttons).
- Use the MP modem to connect to a network.
- Collect and use GPS and I/O data from a fleet of vehicles in which MP modems are installed.
- Configure router functions.
- Configure WAP.

This *User Guide* is provided as a PDF (Portable Document Format) file on the installation CD.

Online help is provided with 3G Watcher. It describes all the icons and indicators in 3G Watcher and provides detailed instructions on using 3G Watcher to make data connections. When using 3G Watcher, you can access help through the menu system or by pressing the <F1> key.

The *MP 3G Modems AT Command Reference* manual (document #2130810) describes the available AT command set.

The *MP Modem Manager User Guide* (document #2130554) provides information on how to install, configure, and use the MP Modem Manager software to manage a fleet of modems.

The *Monitoring and Tracking Protocol Guide* describes the protocols used in data transmissions between the MP modem and the network server. It provides the information necessary to develop host applications that process GPS and digital input from a fleet of MP modems. For more information contact support@sierrawireless.com.

»» 2: Getting Started

- Plan your MP modem installation
- Required equipment
- System requirements

This chapter provides:

- An overview of the installation process
- Information about the equipment you'll need
- System requirements for the clients you want to use with the MP modem
- Planning considerations

Overview of installation steps:

- Plan the installation.
 - Location
 - Connection type
 - Routing
- Ensure required equipment is available.
- Ensure the clients have the necessary system requirements.
- Install the hardware (MP modem, clients, antennas, cables).
- Install the power harness or AC/DC adapter.
- Connect the MP modem to the computer (if using cables).
- Install the software (Watcher and MP modem drivers).
- Configure your account.
- Configure networking options (if you are using the router functionality).
- Configure the wireless access point settings (if desired).

Plan your MP modem installation

This section guides you through the decisions you need to make before you begin the installation.

Where do you want to install your MP modem?

The MP modem can be installed in a vehicle or in an office. The same installation steps apply with the following exceptions:

- If you are installing the MP modem in a vehicle:
 - Use the power harness to connect the MP modem to the vehicle battery.
 - Decide how to set the ignition sense option for powering the MP modem on and off (that is, depending on the ignition switch wiring, the MP modem can be turned on when the engine is started, when the ignition is in accessory mode, or independently of the ignition).
- If you are installing the MP modem in an office, an AC/DC adapter is available.

What type of connection(s) do you plan to use?

The MP modem is capable of the following kinds of network connections:

- Serial
- USB
- Ethernet
- Wireless Access Point via IEEE 802.11b/g (MP W only)

Data transfer rates vary, depending on the network, but note that the highest data rate using a serial connection is 115.2 kbps.

Before deciding which network interface to use, you need to understand the advantages and disadvantages of each, and any other implications of using one interface over another.

The following table summarizes the advantages and disadvantages of the various interfaces:

	Serial	USB	Ethernet	WAP ^a
Data connection type	Client-initiated	MP modem pro-active initiation	MP modem pro-active initiation	MP modem pro-active initiation
Interface hierarchy^b	Lowest priority	Overrides serial	Overrides USB and serial	Overrides USB and serial. Overrides Ethernet in non-NAT mode. In NAT mode (multi-client mode), Ethernet and WAP are supported simultaneously.
Requires reset to activate	No	No	No	Yes
Required to use	Client requires PPP protocol and a dialing mechanism	Install drivers on PC, install USB cable to MP modem	Install Ethernet cable	Enable WAP and reset MP modem
When connection is dropped	Client must redo connection procedure	Client needs to do nothing	Rediscovery required (automatic in all clients)	Rediscovery required (automatic in all clients)
Supports Watcher	Yes	Yes	Yes	No

- a. The wireless access point interface is only available with the MP W.
 b. Note: If you enable a wireless access point or Ethernet interface after a USB connection has already been established, the USB connection is disabled.

You can switch between interfaces after the modem is installed and configured, but before doing so, you need to understand the interface hierarchy.

If you switch from a serial interface to any other interface, the serial interface is disabled. If you switch from USB to either a Ethernet or wireless access point, the USB connection is lost. If you switch from Ethernet to wireless access point (MP modem only), the Ethernet connection is disabled.

Watcher is available for all network interfaces except wireless access point.

Required equipment

Package contents

Each MP modem box contains:

- The MP modem
- A mounting template
- Mounting screws and washers
- An installation and documentation CD
- A power harness

If any of these are missing, please contact your account manager.

Additional required equipment

To install the MP modem, you need the power harness (or existing MP 750 or MP 775 power harness), or an AC/DC adapter (for office installations), mounting template, and the screws and washers that come with the device.

You may also require:

- **A USB, Ethernet, or 9-pin serial cable.** This must be long enough to run from the mounting location of the MP modem to the computer.
 - The maximum length for the serial or USB cable is 5.5 m (18 feet). The USB cable must have a Type A male connector at the computer end and a Type B male connector at the MP modem end.
 - The Ethernet cable should have RJ-45 connectors. The MP modem's performance is affected by the type of Ethernet card in the computer and the type of cable used. The minimum requirement for the Ethernet cable is an unshielded twisted pair (UTP) cable, category 3 or 4. For better performance, use a shielded, category 5 cable. The maximum length is 100 m (328 feet).
- **Main Radio frequency antenna and cable.** The antenna must have the appropriate regulatory approval, 50 ohm impedance, and a male TNC connector. It may be a hard or magnetic-mount antenna.
- **Access Point antenna and cable. (MP 880W modem only)**
- **GPS antenna and cable (optional).** This is necessary if you use the built-in GPS module.
- **Power supply.** This is usually the vehicle's battery.
- **Appropriate electrical grounding.** If a ground wire is necessary, use a 16-gauge wire and connect it to a ground screw.

Note: If GPS is being implemented, you require either two antennas or a combination Main RF and GPS antenna.

- **I/O cable (optional).** This is required if a panic button, sensor, gauge, or other I/O device is installed.

System requirements

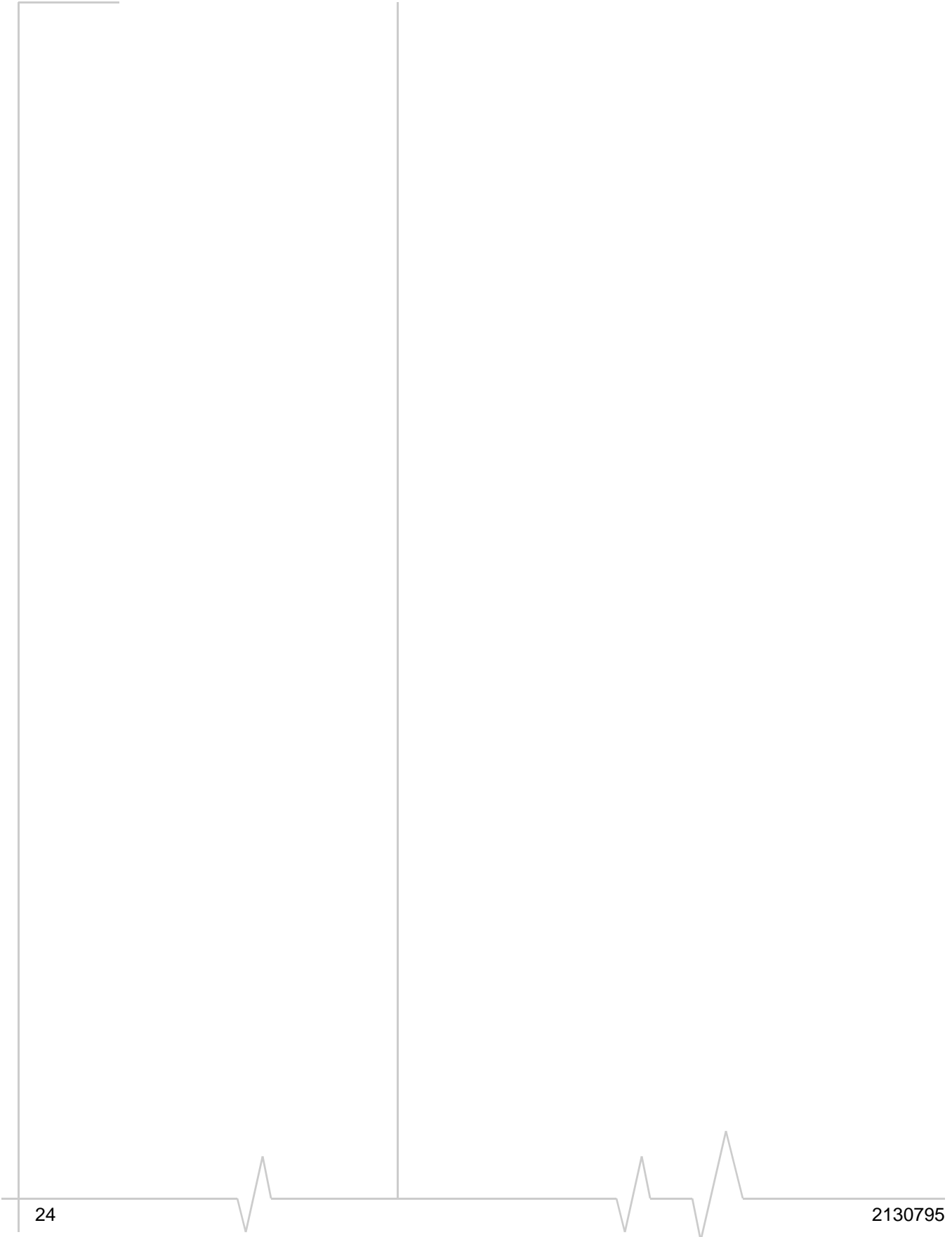
Before you begin the installation, ensure your computer meets the following system requirements necessary for the installation and running of 3G Watcher software:

- Operating systems:
 - Windows® Vista™
 - Windows XP (Home or Professional)
- Available USB, Ethernet, or DB9 serial port
- CD-ROM drive (installation only)
- 32 MB RAM memory

MP modem accessories

For information about accessories for your MP modem — including cables and antennas — contact your account manager or visit www.sierrawireless.com.

Note: Do not connect the MP modem to a USB port on a computer before installing the software.



3: Hardware and Software Installation

- Install the MP modem

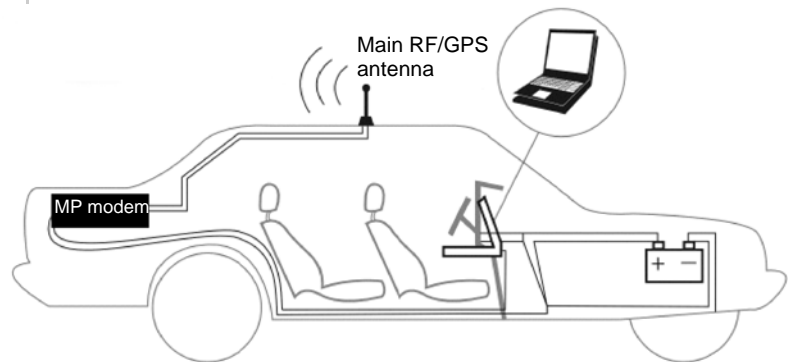
This chapter provides instructions for installing the MP modem, installing the 3G Watcher software, and activating your account.

The MP modem installation should be done by a professional.

Before you begin the installation, ensure that you have all the necessary components and equipment listed in “Required equipment” on page 22, and have read the “Installation overview” section below.

Installation overview

The MP modem may be installed in a vehicle (typically the trunk) and connected to a laptop computer mounted on the dashboard (as shown in the following illustration) or in an office.



Note: The MP modem is designed for negative-ground vehicles only. It will not function in a positive-ground vehicle.

Figure 3-1: Installation of the MP modem in a vehicle equipped with a notebook computer and a combination antenna, using the car battery for power and ignition-sense wiring for power on/off.

MP modem housing

The MP modem has a rectangular metal housing. There is a connector panel on the rear, an indicator panel on the front of the housing, a reset button on top, and mounting holes along the bottom edges on either side.

Connector panel

The MP 880W modem has the following connectors:

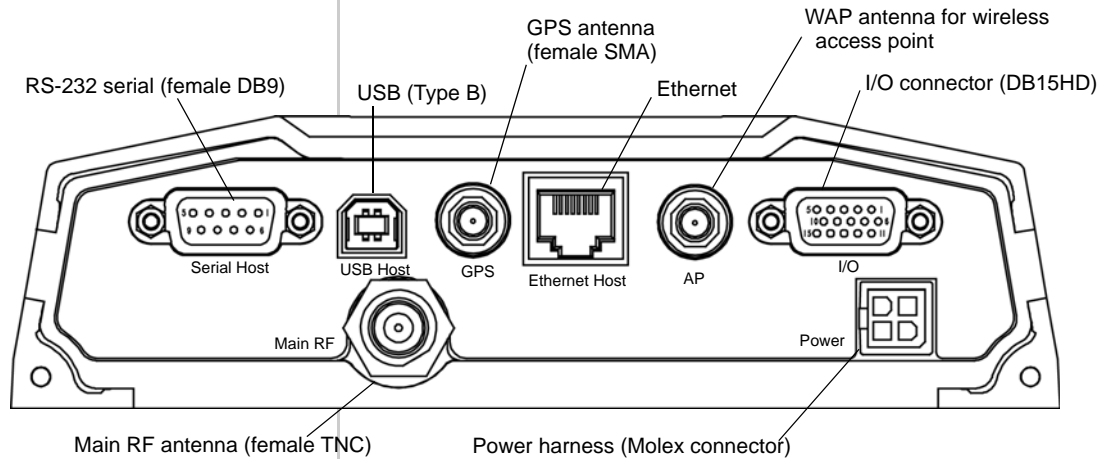


Figure 3-2: MP 880W modem rear connectors

GPS and I/O options

The MP modem provides support for GPS (Global Positioning System) and for attaching input/output devices.

GPS. If you plan to use the MP modem’s built-in GPS module, you must connect a GPS antenna using an antenna cable, or use a combination antenna that can connect to both the GPS and Main RF connectors on the MP modem housing.

Other I/O devices. Other devices, such as panic buttons, sensors, or gauges may also be installed with the MP modem and connected with an I/O cable to the I/O port. (See “I/O port connections” on page 37.)

Overview of installation steps

The installation process for the MP modem varies depending on how you plan to use it, where it best fits, and which of its features you plan to use. The main steps are:

1. Mount the MP modem.
2. Mount the antennas and connect the cables.
 - Main RF antenna and cable
 - GPS antenna and cable, if you plan to use GPS
 - WAP antenna and cable (MP 595W only)
3. Connect the power harness.

Note: Electrical installations are potentially dangerous and should be performed by personnel thoroughly trained in safe electrical wiring procedures for vehicles.

4. Connect the cable that runs between the MP modem and your computer to the MP modem.
Do not connect the cable to the computer until you have installed the software.
5. Install the software.
6. Start 3G Watcher and activate your account.
7. Test the system.

Install the MP modem

Step 1—Mount the MP modem

Note: Power off the MP modem, your computer, and any other devices while you are connecting cables.

If you are using the MP modem in a vehicle, it is usually mounted in the trunk, but other possibilities are under the dashboard or a seat.

Select a location for the MP modem

When selecting a mounting location, remember the following:

- Do not expose the MP modem to weather and environmental conditions beyond the ranges listed in the environmental specifications on page 74. Avoid excessive heat from the engine compartment, heaters, or the exhaust system, and extreme cold from direct contact with air conditioners or other cooling systems. Never immerse it in any liquid.
- If you are replacing an MP modem, you can mount the new MP modem in the same location using the existing mounting holes.
- Every device connected to the MP modem, as well as the MP modem itself, should be grounded. (See “Ground the MP modem” on page 28 and “Ground the power harness” on page 34.)
- Route cables to their destinations without using excess wiring.
- Make sure all connectors and the reset button are easy to reach and the indicator lights are visible.

Mounting the MP modem

To mount the MP modem:

1. Use the provided mounting template to mark the location of the mounting holes.
2. Drill 5/32" pilot holes (unless you are reusing holes from a previous MP modem mounting).

Use the supplied mounting screws and washers to secure the MP modem through the holes along the edge of the case bottom.



Figure 3-3: Mounting the MP modem. Arrows indicate the mounting holes. The front cover is open for illustration purposes only. Close it before mounting.

Ground the MP modem

Note: Electrical installations are potentially dangerous and should be performed by personnel thoroughly trained in safe electrical wiring procedures for vehicles.

Automotive installations usually provide a good quality ground for each piece of electrical equipment. In most cases, ground the MP modem by connecting the black ground wire of the power harness to either the vehicle chassis or to the negative terminal of the battery.

If a device connected to the MP modem, such as a notebook computer, is not properly grounded, it may ground itself through the cable connecting it to the MP modem. This creates a hazard and could cause equipment damage. If you cannot properly ground a device, a potential solution is to install a fuse in the ground return wire.

The power harness has 5 A fuses on the red power wire and the white ignition sense wire, but *not* on the black ground return wire. (See “Step 3 – Install the power harness” on page 31.)

You can also use a ground screw on the connector panel of the MP modem. Use a 16-gauge wire if you choose to use a ground screw. A ground screw is not required as long as the power harness is properly grounded.

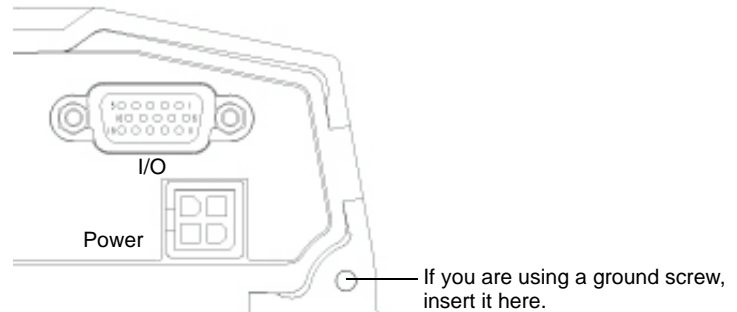


Figure 3-4: The ground screw connector on the connector panel.

Note: Tighten cables connected to the MP modem by hand. Do not use tools.

Step 2—Mount the antennas and install the cables

The MP 880W modem has one Main RF antenna connector and one GPS antenna connector. The MP 595W has an additional RF antenna connector for an AP antenna. The MP modem requires an RF antenna to connect to the wireless network.

The built-in GPS module requires a dedicated GPS antenna or a combination antenna with cables to both the Main RF and GPS antenna connectors on the MP modem.

If you already have an MP modem combination GPS antenna, you can re-use it with your new MP modem. This antenna has two leads — one for Main RF (TNC connector) and one for GPS (SMA connector).

Main RF antenna

Use an approved Main RF antenna to connect to the wireless network. The antenna must have 50 ohms impedance and a cable with a TNC connector, as well as the following characteristics:

- The total maximum gain, including cable loss, must not exceed 4 dBi (if the antenna operates on the PCS band) or 5 dBi (if the antenna operates only on the Cellular band).
- The antenna must transmit and receive on the necessary frequency bands in your coverage area. The MP modem supports these RF bands:
 - HSUPA and UMTS networks:
 - 850 MHz
 - 1900 MHz

Note: The WiFi antennas approved for use with this device must be of either a PCB omni antenna with a gain of no more than +2 dBi, or a dipole antenna with a gain of no more than +5dBi. No other antennas are approved for use with this device.

- 2100 MHz
- EDGE and GPRS networks:
 - 850 MHz
 - 900 MHz
 - 1800 MHz
 - 1900 MHz

If your MP modem will only be connected to networks that use one of the bands, an appropriate single-band antenna is sufficient. Contact your service provider for information about radio bands used in your area.

- Access point antenna. The 2.4 GHz AP antenna connects to the AP antenna connector on the rear of the MP modem.

For more information about antennas for your installation contact your account manager.

GPS antenna

The GPS antenna connects to the MP modem using a male SMA connector. Contact your account manager for more information about compatible GPS antennas.

AP antenna (MP 595880W only)

The AP antenna must be installed by an RF professional. The AP antenna connects to the MP modem using a reverse polarity male SMA connector.

Antenna locations

When selecting locations for the Main RF, GPS, and AP antennas:

- Refer to the documentation provided with each antenna to determine whether it requires a ground plane.
- Ensure that the Main RF antenna is mounted at least 20 cm (8 inches) from vehicle occupants and bystanders.
- Ensure that all radio antennas (Main RF, GPS, CB radio, car radio) are mounted at least 20 cm or more apart (30 cm recommended).
- (MP 595875W only) Ensure that the AP antenna is mounted at least 20 cm from the Main RF antenna.

Install the antennas and cables

Note: When connecting the cables, hand-tighten the connectors; do not use tools.

To install the Main RF, GPS, and AP antennas:

1. Mount each antenna according to the instructions provided with it.
2. Thread the antenna cables to the MP modem. Secure the cables as necessary.
3. Connect the Main RF antenna cable to the TNC connector on the rear of the MP modem.
4. If you are using GPS, connect the GPS antenna cable to the GPS antenna connector on the rear of the MP modem.
5. If you are using WAP, connect the AP antenna cable to the AP antenna connector on the rear of the MP modem. (MP 880W only)

*Note: To avoid RF interference problems and possible damage to the MP modem, **do not** power on the MP modem before connecting the Main RF antenna.*

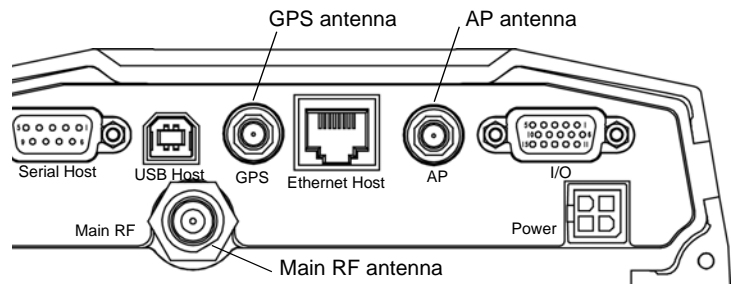


Figure 3-5: The MP modem's SMA connector for the GPS and AP antennas (top), and the TNC connector for the Main RF antenna (bottom).

The AP antenna must be installed by a professional and there must be a separation of at least 20 cm. between the AP antenna and the main RF antenna.

Note:

Step 3—Install the power harness

In a typical installation, the MP modem is connected to the vehicle's battery with the power harness. The MP modem supports a voltage range between 9 volts direct current (VDC) and 36 VDC, and is designed for both 12 VDC and 24 VDC vehicle electrical systems.

Note: Connector part numbers: 39-01-2040 or 39-01-2045. Pins part number: 39-00-0039.

Note: Electrical installations are potentially dangerous and should be performed by personnel thoroughly trained in safe electrical wiring procedures for vehicles.

Power connector

The power harness connects to the MP modem with a Molex connector.

Power connector (Molex) pinouts

The pinouts for the Molex connector on the power harness are:

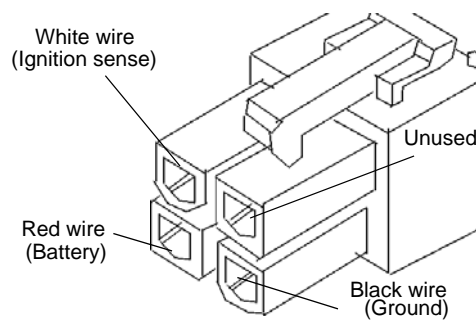


Figure 3-6: Pinouts for the power harness.

The battery (red) and ignition sense (white) wires in the power harness include 5 A fuses. The black ground wire is not fused. (See “Ground the power harness” on page 34.) Replacement power harnesses are available from Sierra Wireless.

Note: The battery cable used for a car, truck, or other mobile connection must be less than 3 meters in length.

Vehicle installation

This section applies to installing the MP modem in a vehicle. If you are installing it in an office, see “Office installation” on page 35.

Ignition sense on/off wiring

This section only applies to installing an MP modem in a vehicle. If you are installing the MP modem in an office building, use the AC/DC adapter.

Note: Do not install an on/off switch on the main (red) battery line, or connect the white ignition sense wire to the red battery wire. Both configurations bypass the MP modem's controlled shutdown sequence, and may cause data loss and subsequent power-on problems. Incorrect wiring may also drain the vehicle battery.

The MP modem's power on/off is controlled by the ignition sense line (white wire) using internal software, rather than a hard on/off switch on the red power line. The red, black, and white wires connect to the battery and ignition switch as shown in the power harness wiring diagram.

Note: The battery cable used for a car, truck, or other mobile connection must be less than 3 meters in length.

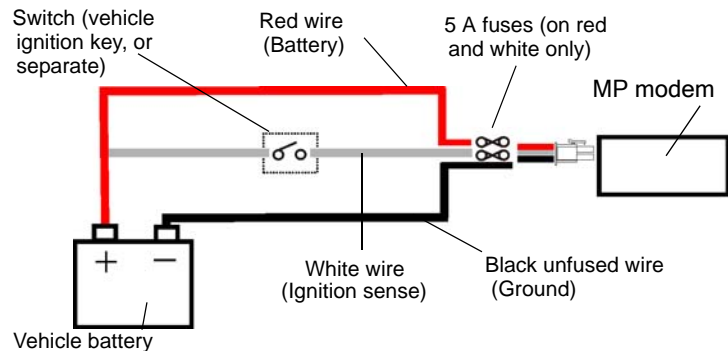


Figure 3-7: Wiring for the power harness. The white wire is the ignition sense.

- When the white ignition sense line is pulled high (5 to 36 V), the MP modem powers on.
- When the ignition sense line is pulled low (less than 2 V), the MP modem performs a controlled shutdown sequence (under software control), de-registering and saving any relevant operational data before powering off.

Ignition sense options

There are three ways to connect the ignition sense wiring:

- **Engine on only.** Connect the white ignition sense wire to the vehicle's ignition switch so that the MP modem is powered on only when the ignition key is switched to the full "On" position, that is, when the engine has been started. In this configuration, *the engine must be running* for the MP modem to be on.

— or —

- **Accessory on.** Connect the white ignition sense wire to the vehicle's ignition switch so that the MP modem is powered on when the ignition is switched to "Accessory" mode. In this configuration, the MP modem is on *whenever other vehicle electrical devices can be switched on*—such as when the radio and windshield fan can run.

Note: If you choose to install a separate switch, it must be connected to the white ignition sense wire, not the red battery wire, so that the MP modem can perform a controlled shutdown, as described on page 32.

Note: Ensure that all wires are correctly spliced or crimped. Improper grounding and wire connections may lead to equipment damage or safety hazards.

— or —

- **Separately switched.** Connect the white ignition sense wire to a separate switch mounted in a convenient location, which allows the MP modem to be turned on or off regardless of the position of the ignition key. In this configuration, the MP modem can be powered on or off even if the key is not in the ignition.

The MP modem also has a “Power Off Timer”. When power is removed from the ignition sense wire, the MP modem remains on for the period defined by the Power Off Timer, up to a maximum of 240 minutes. The Power Off Timer is configured in 3G Watcher. See the online help in 3G Watcher for details.

Ground the power harness

You must connect the black ground wire from the power harness to the grounded negative terminal of the vehicle battery, or another appropriate electrical ground. Failing to ground the power harness properly may damage the MP modem, may cause radio interference, and can be dangerous. (See “Ground the MP modem” on page 28.) The ground wire in the MP modem power harness is not fused.

Power connections

Connecting the MP modem’s power wires properly is important—poor connections can damage the wiring, the MP modem, or the vehicle’s electrical system, and can be dangerous.

Correct wire splicing

You can splice the wires of the power harness to the car wiring. Proper splicing is essential to reliable operation of the MP modem. Do **NOT** use “quick taps”; they reduce the integrity of the wire that is cut and let moisture into the cable.

An appropriate method of splicing is to strip a small portion of the insulation, solder the wires together, then heat-shrink the connection to re-insulate it.

Crimp terminals

If suitable terminal connection points are available on the vehicle for power and ignition sense, then using automotive crimp terminals is recommended. When using crimp terminals, do not leave bare wire exposed. Do not use a crimp terminal for more than one wire unless it is designed for that purpose.

Office installation

Use the AC/DC adapter available from Sierra Wireless to connect the power harness to a standard outlet.

Step 4—Connect the MP modem to computer cable

The MP modem connects to:

- A computer through a USB, Ethernet, or serial port
- Other optional devices through the DB15HD I/O connector

Note: Do not connect the MP modem to the computer until you have installed the software.

The MP modem connects to a computer using:

- A USB cable (with a Type A connector on the computer end and a Type B connector on the MP modem end). The maximum of the USB cable is 5.5 m (18 feet). These cables are readily available from many suppliers.
- An Ethernet cable with RJ-45 connectors. The type of cable you use affects the performance of the MP modem. The minimum requirement for the Ethernet cable is an unshielded twisted pair (UTP) cable, category 3 or 4. For better performance, use a shielded, category 5 cable. The theoretical maximum length is 100 m (328 feet).

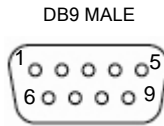
You can connect the MP modem Ethernet port directly to a computer or other Ethernet device with either a cross-over or a straight-through cable.

- A serial cable (with a DB9 connector on the MP modem end). The maximum length of the serial cable is 5.5 m (18 feet). Sierra Wireless sells suitable serial cables in 5-meter (16-foot) lengths.

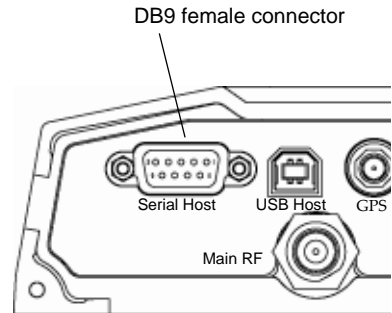
Note: 5.5-meter cable part number: 6000083.

Serial connector (DB9) pinouts

The MP modem is configured as DCE (Data Communications Equipment) and uses the standard RS232 pin designations:



1. Data Carrier Detect (DCD)
2. Transmitted Data (TxD)*
3. Received Data (RxD)*
4. Data Terminal Ready (DTR)
5. Signal Ground (GND)
6. Data Set Ready (DSR)
7. Clear To Send (CTS)
8. Request To Send (RTS)
9. Ring Indicator (RI)



* RxD and TxD are named with respect to the MP modem (that is, RxD is the Receive Data input to the MP modem, and TxD is the transmit data out of the MP modem.)

Figure 3-8: Pinouts for an RS232 male DB9 serial cable (left) that connects to the MP modem's female DB9 serial connector (right). Note that the two figures' pinouts are mirror images of each other, since they plug together.

The serial connector uses these voltage specifications:

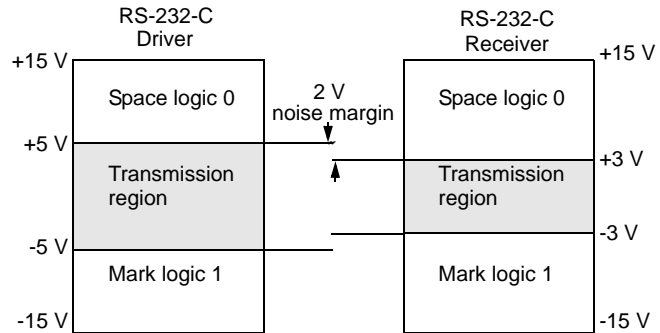


Figure 3-9: Voltage specifications for the MP modem's serial connector.

Install the USB, Ethernet or serial cable

To install the USB, Ethernet, or serial cable, thread the cable through the vehicle and attach it to the USB, Ethernet, or serial connector on the MP modem.

Note: Do not connect the cables to the computer until you have installed the software. If you have an MP 595W and are planning on using a WAP connection, see "Plan your MP modem installation" on page 20 for more information.

Note: Ensure that the MP modem and your computer are powered off while installing cables.

Note: You must be logged in with administrative privileges to install the software.

I/O port connections

The MP modem's I/O port is a standard female DB15HD connector for remote monitoring of gauges, sensors, and alarms. If you are planning to use these devices, you need to create a custom I/O cable. See "Configuring the MP Modem to Report GPS and I/O Data" on page 55.

Step 5—Install the software

Follow these steps to install 3G Watcher and the MP modem driver:

1. Ensure that the computer meets the necessary system requirements. (See "System requirements" on page 23.)
2. Close any Windows applications that are open on your computer.
3. Insert the MP modem CD in your CD-ROM drive.
The CD should automatically launch and display a menu. If not, select **Start > Run** from the Windows taskbar and type **d:\index.html** (where **d** is the drive letter of your CD-ROM drive).
4. From the CD start-up menu, select **Install MP 3G Watcher** to launch Installation.
5. Use the **Next** and **Back** buttons to navigate through the Installation window.
6. Close the browser. To close the CD start-up menu, select the taskbar button to re-display the window, then select **exit** in the lower right corner of the window.
7. Power on the MP modem and connect it to your computer. If you are using an Ethernet connection and your computer is connected via an Ethernet cable to a LAN, disconnect the computer from the LAN before connecting the MP modem to the computer.

To use the 3G Watcher, please refer to the 3G Watcher software section in Chapter 4.

Step 6—Configure your account

The MP modem uses a SIM card that stores your account information. You need an account with a service provider for each MP modem you deploy. You should also obtain a SIM card for each account. The SIM contains account information used by the network to identify subscribers and provide access to the appropriate messages and services. The SIM must be inserted in the MP modem's SIM slot (as described in the next section.)

As well as providing the SIM, your service provider should give you the account information needed to configure the MP modem to use the account: a **user name**, **password**, and **APN (Access Point Name)**.

Insert the SIM Card



The MP modem has a SIM card slot next to the lights on the indicator panel. The slot is protected by a removable rubber cover, and houses a SIM card sled. To insert a SIM card into the MP modem:

1. Open the rubber cover.
2. Use a pen or stylus to press the yellow eject button inside the slot.
3. Pull the sled out of the slot.
4. Place the SIM card into the sled until it clicks into place. The SIM card should fit in only one way, with the contact surfaces facing up as shown.



Figure 3-10: Placing a SIM card into the sled.

5. Insert the sled back into the SIM slot.
6. Push the sled in until it clicks into place in the slot.
7. Close the rubber cover again by fitting in the left edge and then pressing in to seal the cover.

Note: Your profiles are stored on your MP modem —not on the SIM card. If you use your SIM card in another device you must create a profile on that device.

Note: If the version of firmware on your MP modem is not current with your version of 3G Watcher, you will be prompted to update your firmware when you launch the program. This update ensures proper operation of your MP modem and may take up to 15 minutes.


Set up connection profiles

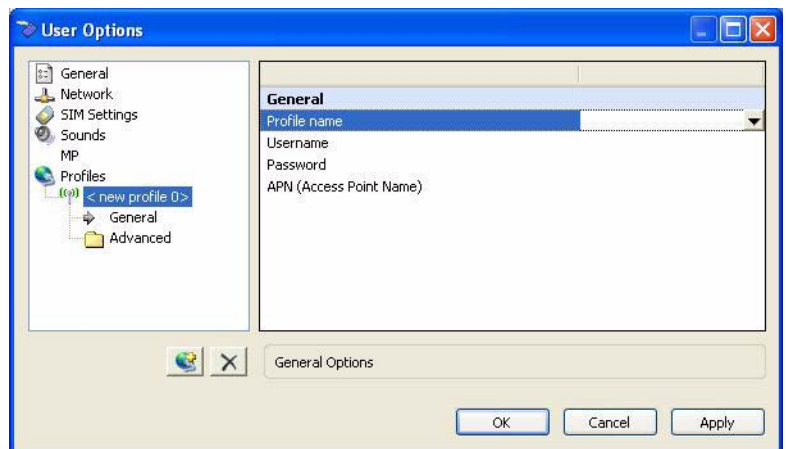
Unless your MP modem was pre-configured by your reseller or service provider, you must set up at least one connection profile before you can use it to access the Internet. Some service providers offer a single profile. Some offer separate profiles for separate purposes (for example: one for web browsing and one to use while accessing a corporate network over a VPN). You may also require different profiles for different types of data connections, or if you have multiple SIMs. The MP modem allows you to create up to three profiles.

Create a profile

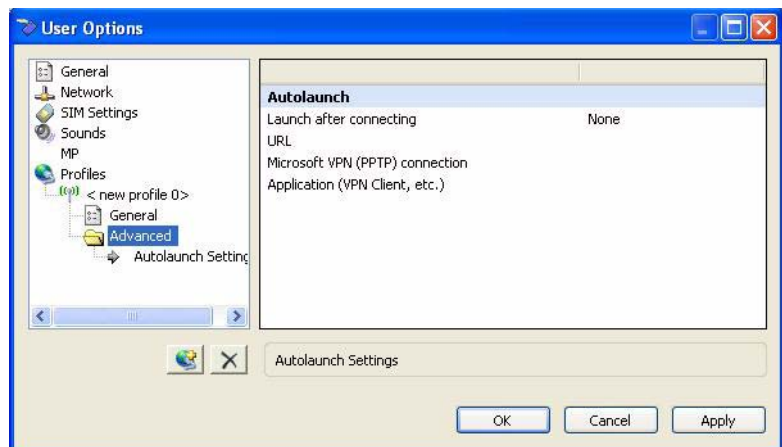
3G Watcher includes pre-defined profiles for many different service providers. You can either use one of these profiles or create a profile manually by entering the necessary information.

To create a profile for a high-speed connection:

1. Ensure that you are not connected to the network.
2. Start 3G Watcher by choosing **Start > Programs > Sierra Wireless Inc > 3G Watcher > 3G Watcher**, or double click the desktop shortcut.
3. From the main window, select **Tools > Connections**.
4. Click the **Add new profile** button .



5. Complete the following fields:
 - **Profile Name** (any meaningful description of the profile, such as the name of your service provider)
 - **User Name**
 - **Password**, and/or **APN**, if applicable. (Check with your service provider for specific requirements for the user name and password.)
6. If you want to set 3G Watcher to automatically launch your Internet browser, VPN, or any other program, or if your service provider specified an IP address or DNS address(es), select the **Advanced** folder. Otherwise, skip to step 8.



7. Select the Launch after connecting field, and from the drop-down list, select which application, if any, you want 3G Watcher to automatically launch when a connection is established with this profile:
 - **None**—No application is autolaunched.
 - **Browser**—3G Watcher autolaunches your default Internet browser.
If you selected Browser, in the URL field, type the URL for the web site you want to view on connection (such as www.sierrawireless.com).
 - **MS VPN**—3G Watcher autolaunches a Virtual Private Network (VPN) connection.
If you selected Microsoft VPN, in the Microsoft VPN (PPTP) connection field, select the VPN connection from the drop-down list.
 - **Application**—3G Watcher autolaunches an installed VPN program, or any other program you specify.
If you selected Application, in the Application field, enter the path to the program or use the browse button to

locate the .exe file for the software application you want to autolaunch.

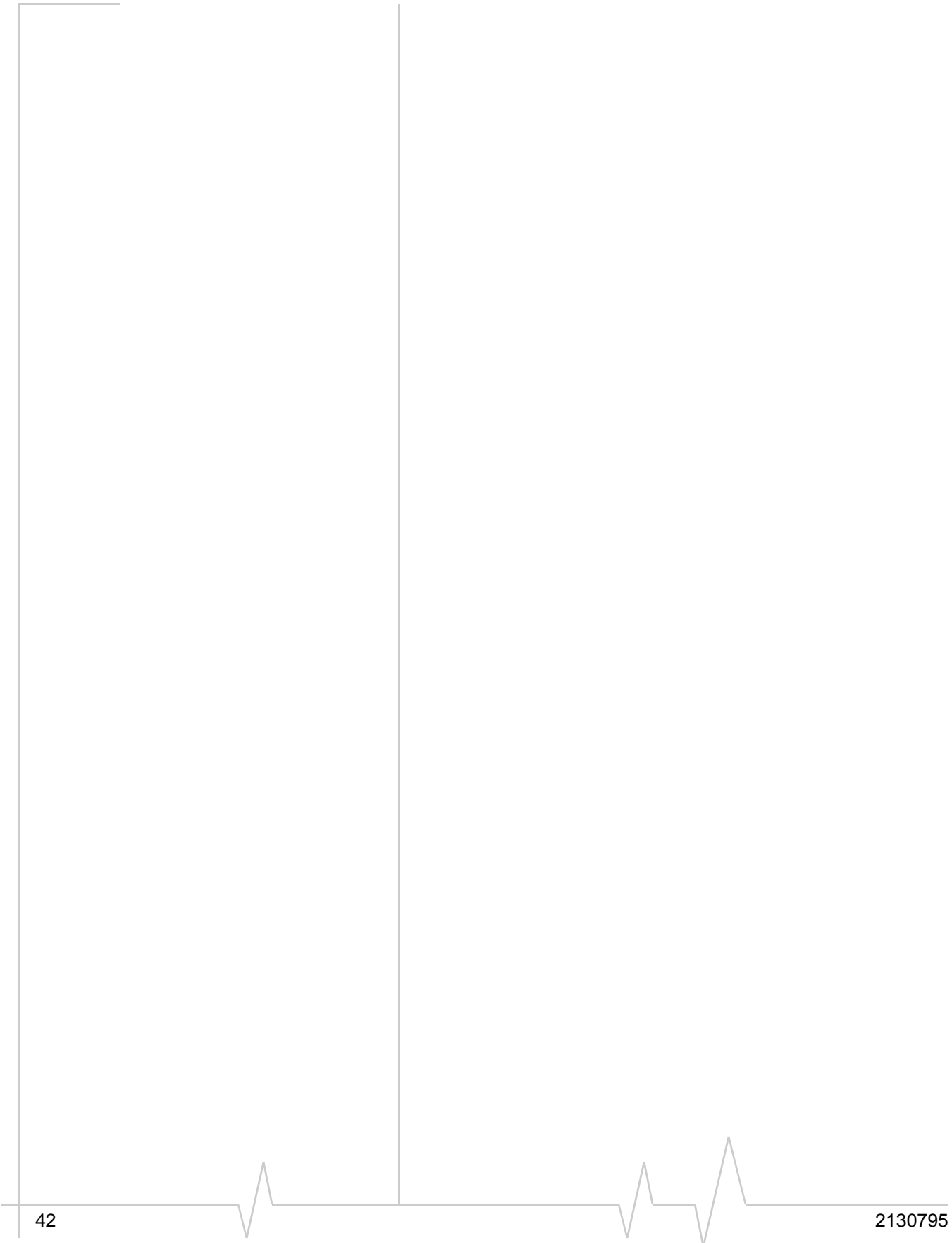
8. If you have more than one profile, select **Profiles**, and in the **Default Profile** field, choose the default profile from the drop-down list. (3G Watcher uses this profile for the autoconnect feature. It is also used to establish a connection if you click the **Connect** button without selecting a profile.)
9. Click **OK**.

For additional information on setting up your 3G Watcher options, press <F1> to open the 3G Watcher online help or select **Help > Help Topics**.

Step 7—Test the system

Finally, test the system to:

- Confirm that the MP modem can connect to and transmit data over the network.
- Confirm that the MP modem can determine its location (if you have connected a GPS antenna).



»» 4: MP Modem Operation

- Status indicators
- 3G Watcher software
- Establishing connections

Operating the MP modem requires some knowledge of both the MP modem hardware and the 3G Watcher software. This chapter describes the basics of each.

Turning the MP modem on and off

If the MP modem is installed in a vehicle, the way in which the MP modem is wired determines how it is powered on and off. In most cases the power supply for the MP modem is the vehicle's electrical system and the MP modem is powered on and off in one of these ways:

- **Engine on.** The MP modem is powered only when the ignition is on. (The MP modem is only on when the engine is on.)
- or —
- **Accessory on.** The MP modem is powered when the ignition is switched to "Accessories". (This allows the MP modem to be powered when the engine is off.)
- or —
- **Separately switched.** The MP modem is connected to a separate on/off switch so that it can be turned on and off independently of the engine and vehicle accessories.

Rather than cutting power to the MP modem, the ignition key or power switch allows the MP modem to perform a controlled shutdown sequence that avoids data loss. (You can also set the MP modem to wait up to 240 minutes after the power switch has been turned off before it shuts down.)

Status indicators

The MP modem’s indicator panel includes four indicator lights.

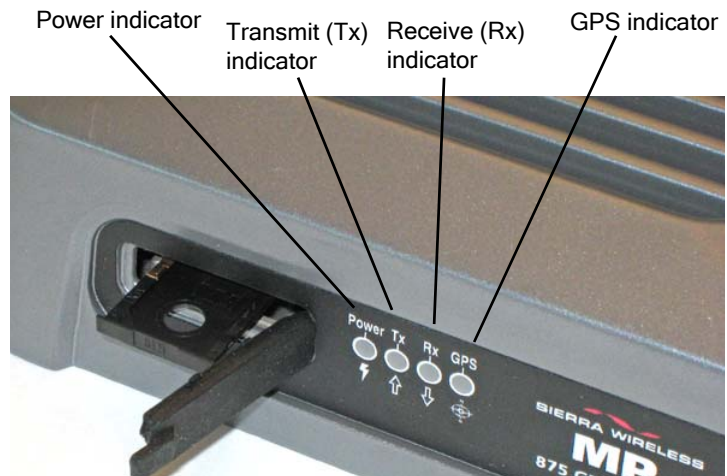


Figure 4-1: The indicator panel of the MP modem.

The following table shows the behavior of the LEDs during normal MP modem operation:

Table 4-1: LED operation

LED	Behavior	Indicates
Power	Off	MP modem is not powered.
	Rapid flashing	MP modem is powered and has not acquired network service.
	Slow flashing (about 1.5 seconds between flashes)	MP modem has acquired network service.
	On solid	MP modem has established a network connection.
Tx	Flashing	MP modem is transmitting data.
Rx	Flashing	MP modem is receiving data.
GPS	Off	GPS module is not active.
	Flashing	GPS module is active but not receiving valid fixes.
	Solid	GPS module is active and providing valid fixes.

Reset the MP modem

The reset button for the MP modem is on the top of the housing.



To reset the MP modem, press the button until all four indicator lights illuminate. (Do not use sharp implements that might puncture the rubber.)

Resetting the MP modem is equivalent to turning the MP modem off and on. This terminates any data connection and causes the MP modem to perform a self-test. (Stored settings are not lost.)

Figure 4-2: The MP modem reset button.

3G Watcher software

3G Watcher is the program used to manage and monitor the MP modem. For information about installing 3G Watcher, see “Step 5 – Install the software” on page 37.

3G Watcher allows you to:

- Create and edit connection profiles.
- Enable or disable SIM security that prevents others from using your SIM card if it is lost or stolen.
- Determine signal strength, roaming status, and other network connection parameters.
- Monitor the status of the MP modem and network services.
- Initiate data connections.
- Set 3G Watcher notification options.
- Configure the I/O ports.
- View GPS information.

3G Watcher Help

3G Watcher has a well-indexed and detailed online help system.

To access help in 3G Watcher, select **Help > Help Topics** or press the **<F1>** key.

Note: Depending on the operating mode, it may not be necessary to run 3G Watcher to use the MP modem, but it does provide useful status information.

Launching 3G Watcher

To launch 3G Watcher:

1. Ensure that the SIM card is inserted into the card slot (see “Insert the SIM Card” on page 38).
2. Start 3G Watcher by choosing **Start > Programs > Sierra Wireless Inc > 3G Watcher > 3G Watcher**, or double click the desktop shortcut.



Connection to MP Physical Interface

1. Go to **Tools > MP Physical Interface**

Note: MP Physical Interface shows disabled under Tools after the connection is established.

2. Select USB, Ethernet, or Serial.

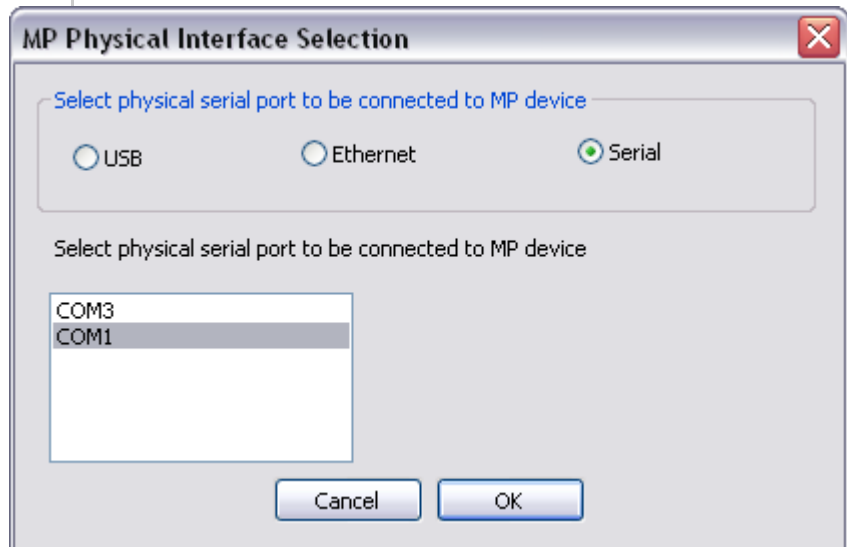


Figure 4-3: Physical Port Selection

3. If you select Serial, select the COM1 port.
4. Click OK

The interface availability for connecting will be subject to the usual interface priority of the MP.

Changing the Physical Interface

To change the physical interface:

1. Click on the **Disconnect** button, if the watcher is connected to your MP.
2. Go to **Tools > MP Physical Interface**

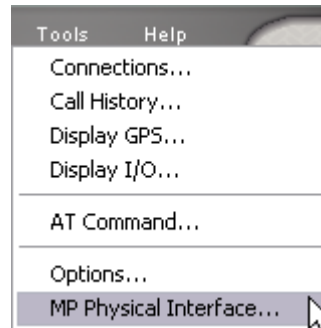


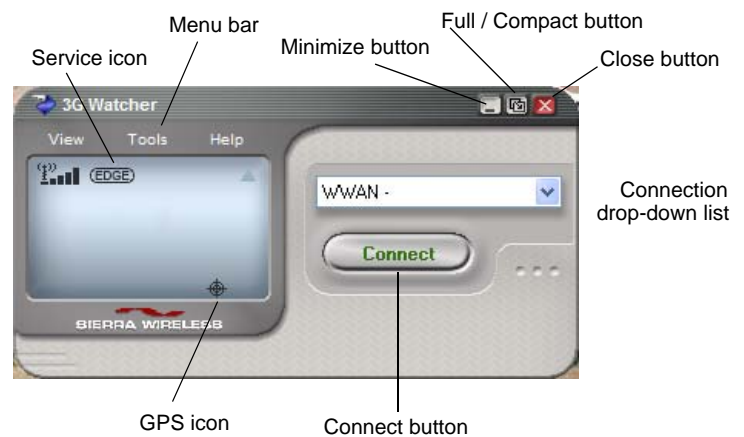
Figure 4-4: Options Menu

3. Select USB, Ethernet, or Serial.
4. Click OK

Watcher closes, reopens and re-initializes itself.

3G Watcher window

The main 3G Watcher window includes a number of elements that let you control and monitor your MP modem and your connection to the network.



Establishing connections

The connection drop-down list on the main 3G Watcher window provides a connection option(s) depending on your profile(s) for that Physical Interface:

- **WWAN** - Name of your service provider or connection type.

- **DUN - Name of your service provider or connection type.**

Depending on the operating mode and settings in 3G Watcher, a connection may be automatically established when 3G Watcher is launched. Otherwise, you can establish a connection by selecting the connection type and clicking the **Connect** button.

Auto-Connect for DUN

Note: DUN connection is not available when WiFi is enabled

The MP needs to be connected to the Watcher with serial, for establishing DUN Autoconnect.

1. Go to **Tools > Options > Profiles**
2. Set DUN Autoconnect to Yes.

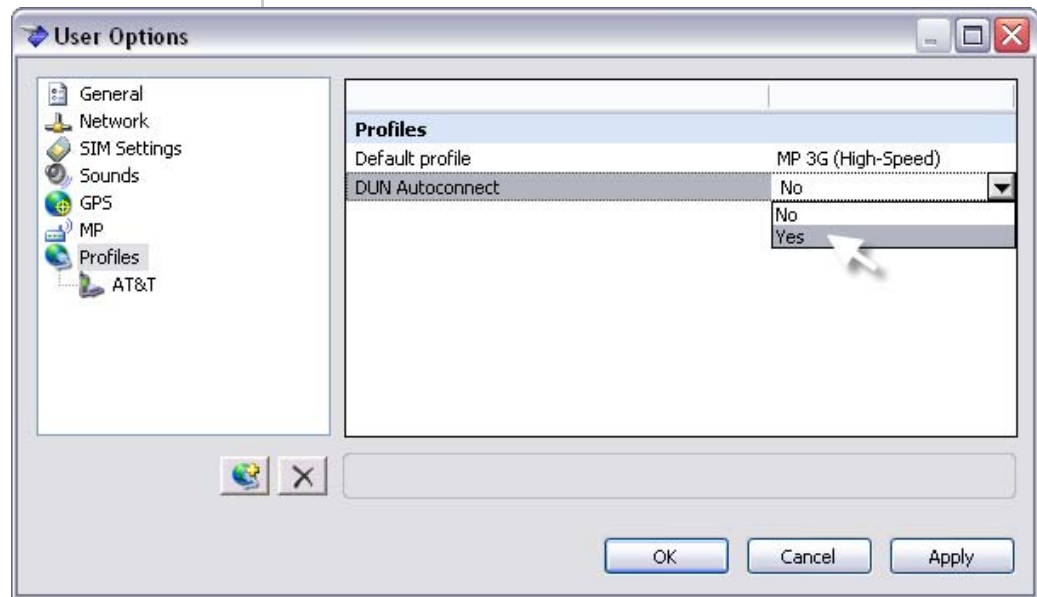


Figure 4-5: DUN Autoconnect

You now have DUN connection.

Note: If you have a Windows operating system, you can put Watcher in to the Windows Startup folder, which will start when Windows launches.

If you also have DUN Autoconnect enabled, this will start the DUN Autoconnect when Windows starts.

5: Configuring the Router Functions

- Non-NAT mode
- NAT mode
- MP modem networking basics in NAT mode
- Static IP and TCP/UDP port forwarding in NAT mode

This chapter describes the router functions of the MP modem and shows you how to configure the MP modem to use its router capabilities.

The MP modem supports Network Address Translation (NAT). NAT operation enables you to use the MP modem to communicate with up to 10 devices on an Ethernet network and up to 10 additional devices on a wireless access point network.

The following table summarizes the MP modem's non-NAT and NAT modes.

Factor	Non-NAT mode	NAT mode
Number of devices supported	One	Up to 10 over Ethernet and another 10 over WAP simultaneously
VPN supported	Yes	IPSec NAT-T from R2.0.0 and PPTP from R2.0.2
Interfaces supported	Serial USB (laptop only) Ethernet Wireless access point (WAP) ^a	Ethernet Wireless access point (WAP) ^a

a. Note: Watcher is not available when using the WAP interface.

Non-NAT mode

In non-NAT configuration, you can connect only one client device, such as a computer to the MP modem, as shown in [Figure 5-1](#).

In this mode, the IP address obtained from the external network is passed directly to the client device, which is why there can be only one client.

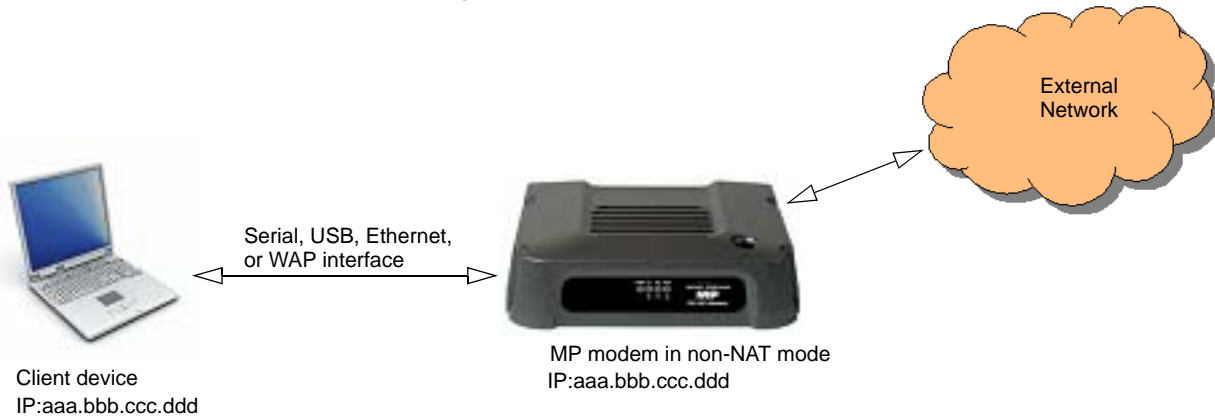


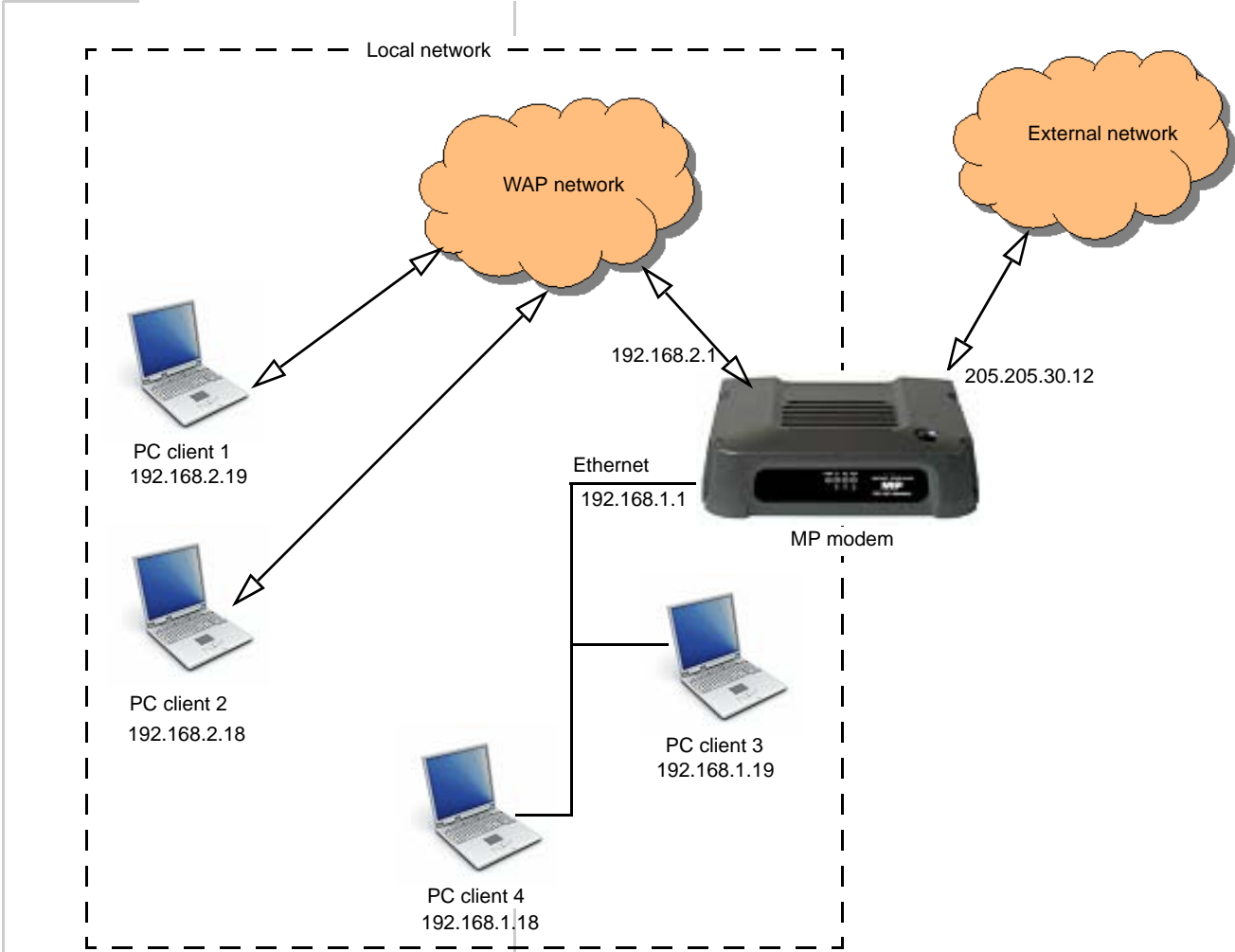
Figure 5-1: MP modem in non-NAT mode

NAT mode

In NAT mode, you can connect up to 10 devices to the MP modem using Ethernet connections and up to 10 additional devices using WAP.

In this mode, the IP addresses assigned by the MP modem to the client devices are private IP addresses. The MP NAT manages the translation of IP addresses and ports between the local and external networks.

The following illustration shows a sample network with 4 computers, two connected on an Ethernet LAN and two connected with WAP.



MP modem networking basics in NAT mode

In NAT mode, the MP modem has a built-in DHCP server that automatically assigns private network IP addresses to devices connected to it. The IP addresses assigned are in the range 192.168.1.10 to 192.168.1.19 for Ethernet and 192.168.2.10 to 192.168.2.19 for WAP.

Enable the router

The router features are enabled when NAT is enabled. By default, NAT is disabled. To enable NAT:

1. In Watcher, select **Tools > Options > MP**.
2. Under Network Settings, select Network Address Translation (NAT) and from the drop-down list select **Enabled**. The MP modem automatically resets in order for the change to take effect.

File and resource sharing over LAN

When NAT is enabled on the MP modem, its router capabilities allow you to share files and resources such as printers, fax, etc. between computers on the LAN.

Static IP and TCP/UDP port forwarding in NAT mode

If desired, you have the option to set up static IP addresses and TCP/UDP port forwarding. The following sections describe these optional settings in more detail.

Set up static IP addresses

Static IP addresses are used to assign a predefined IP address to a specific client on the local network. The client is identified by its MAC address. When Static IP is used in conjunction with NAT port forwarding, it allows a server application to reside on the local network and receive unsolicited data/requests from a remote client on the external network.

Private IP addresses in the range 192.168.1.20 to 192.168.1.254 for Ethernet and 192.168.2.20 to 192.168.2.254 for wireless LAN are available for use as static IP addresses.

You can set up a maximum of 10 static routes, and these routes can apply to either an Ethernet or WAP interface. To set up static routing, you need to know the MAC address of the computers you want to configure.

To configure static routes:

1. Unlock the MP modem configuration. In Watcher, select **Tools > AT Commands** and enter the AT!MPCFGOPEN="x", where "x" is the password. (Default password is MP3G, e.g. AT!MPCFGOPEN="MP3G")

2. In Watcher, select **Tools > AT Commands**, and use the AT!MPSTATICROUTE command to set up static routing. For more information, see the *3G MP Modems AT Command Reference* manual (document #2130810).
3. Reset the modem. Select **Tools > AT Commands**, and use the AT!MPGRESET command to reset the MP modem.
4. Click **OK**.

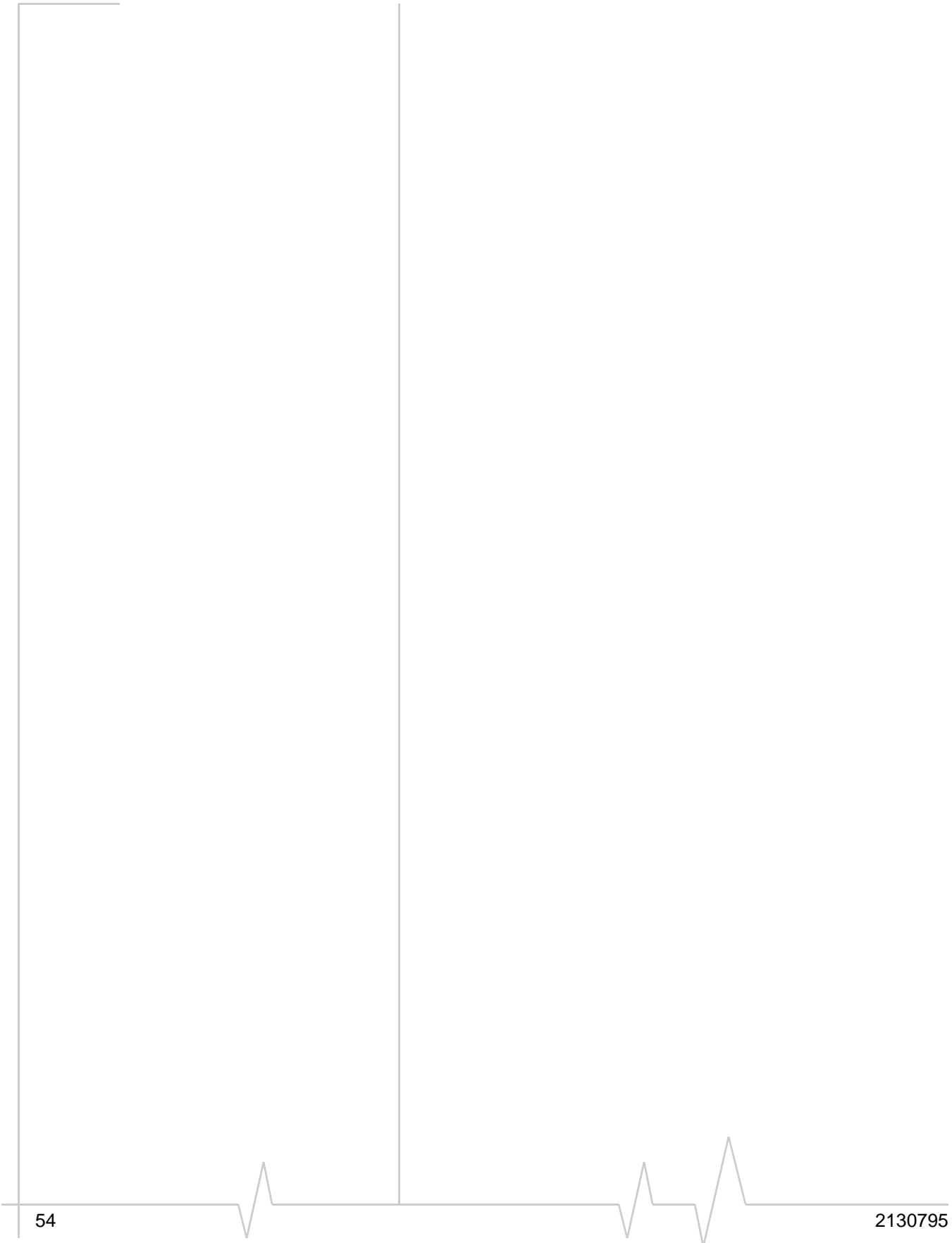
Set up TCP/UDP port forwarding

Setting port forwarding on the MP modem causes it to forward unsolicited external IP packets with certain TCP or UDP Port IDs to specific IP addresses on the local network. If the IP addresses specified are static (that is, tied to a device's MAC address), then the packets are always forwarded to specific devices. This is required when running a server application on the local network.

When port forwarding is set up, the MP modem routes specific UDP or TCP packets from the Internet to a specified port on a specific computer (or other device) on the local network.

To configure port forwarding:

1. Unlock the MP modem configuration. In Watcher, select **Tools > AT Commands** and enter the AT!MPCFGOPEN="x", where "x" is the password. (Default password is MP3G, e.g. AT!MPCFGOPEN="MP3G")
2. Select **Tools > AT Commands** and use the AT!MPPORTMAP command to configure the ports on the MP modem and the computer you want to direct the packets to. You will need to know the MAC address for the computer you want to configure. For more information, see the *3G MP Modems AT Command Reference* manual (document #2130810).
3. Reset the modem. Select **Tools > AT Commands**, and use the AT!MPGRESET command to reset the MP modem.



6: Configuring the Wireless Access Point

- Unlock MP modem configuration
- Enable the wireless access point
- Set the SSID
- Configure the security settings
- Reset the MP modem to factory defaults

This chapter describes how to use the MP 880W modem as a wireless access point. You can use the MP 880W as a wireless access point in either NAT or non-NAT modes¹.

Note: This chapter only applies to the MP 875W.

Overview

By default the wireless access point is disabled. The main steps for configuring the MP modem wireless access point are:

- Enable wireless access point.

Optional:

- Change the password.
- Set the SSID.
- Set the security settings.
- Enable NAT, if applicable. (See [Chapter 5](#) for details.)

Note: Watcher is currently not available over a WAP network. You can use Watcher over any Physical Interface to enable the WAP interface.

Note: If the Wi-Fi is enabled and is in Non-NAT mode, the computer that is connected to the Wi-Fi can monitor cellular connection by using ethernet through the watcher.

1. See [Chapter 5](#) for information on enabling and configuring NAT mode.

Note: When the modem is using a WAP connection, Watcher is available over Ethernet only.

Note: USB and DUN are disabled.

Unlock MP modem configuration

Before configuring the wireless access point and related features such as security setting you need to unlock the MP modem configuration.

This setting is password protected. To unlock the MP modem configuration:

1. In Watcher, select **Tools > Options > Wireless Access Point > Password > Current** and enter the current password. (The default password is **MP3G**.)

The MP modem configuration remains open for about five minutes. If you encounter an error message while setting up the wireless access point parameters, you may need to reopen the configuration lock to continue setting the parameters.

Change the password (optional)

You can change the factory default password, but you should consider this carefully.

*Note: If you change the password and forget the new password, before changing any of the password-protected features you need to reset the modem to **all** the factory defaults. See “Reset the MP modem to factory defaults” on page 53.*

To change the password:

1. In Watcher, go to **Tools > Options > MP > Wireless Access Point**.
2. Under Password, select Set new password, and from the drop-down list, select **Yes**.
3. In the New password field, type the desired password. (It must be between 4 and 15 characters long.)
4. Click **OK**.

Enable the wireless access point

By default the wireless access point is disabled. To enable the wireless access point:

1. In Watcher, select **Tools > Options > MP > Wireless Access Point > Current** and enter the current password. (The default password is **MP3G**.)
2. Select **Tools > Options > MP > Wireless Access Point**.
3. Under Configuration, select the Enable Wireless Access Point field and from the drop-down menu, select **Yes**.
4. If you want to change more settings, proceed to the appropriate sections. Otherwise click **OK** to automatically reset the modem.

Set the SSID

Note: If you want to use Watcher to configure the SSID and security settings, connect the modem to the laptop via an Ethernet cable. Once the MP modem is configured, you can remove the Ethernet cable.

The SSID is the name of the network that appears in the list of computer network settings. The default SSID is in the format MPxxxW-FSN, where xxx is the model number and FSN is the factory serial number.

For example, MP 875W-B452927000310.

There is no need to change the SSID, but you can if desired. If you have more than one MP modem and you are changing the SSID, be sure to assign a unique SSID to each MP modem.

To change the SSID:

1. Unlock the MP modem configuration. In Watcher, select **Tools > Options > Wireless Access Point > Password > Current** and enter the current password. (The default password is **MP3G**.)
2. Select **Tools > Options > MP > Wireless Access Point**.
3. Under Configuration, select the SSID / Network Name field and type in the desired SSID.
4. If you want to change more settings, proceed to the appropriate sections. Otherwise click **OK** to automatically reset the modem.

Configure the security settings

The network security settings on the computers (or other devices) on the network must match the security settings on the MP modem. Configure the security settings on the MP modem and then set the security settings on the computers on the network to match.

The MP modem offers the following security modes:

- Open (no security)
- WPA (Wireless Protected Access) – stronger security standard than WEP
- WPA2 – enhanced version of WPA
- Open WEP (Wired Equivalent Privacy) – basic network security
- Shared WEP

By default, security is set to open (no security).

To select a security option:

1. Unlock the MP modem configuration. In **Watcher**, select **Tools > Options > Wireless Access Point > Password > Current** and enter the current password. (The default password is **MP3G**.)
2. Select **Tools > Options > MP > Wireless Access Point**.
3. Under **Security**, select the **Security / Encryption Type** field and from the drop-down list, select the desired security mode.
4. If desired, set the security key.
 - a. Under **Security**, select the **Set New Network Key** field and from the drop-down menu, select **Yes**.
 - b. In the **New Network Key** field, type the desired key. For WPA and WAP2, enter a string of 8 to 64 ASCII characters (Example: abcdefghij). For WEP, enter a string of 10 ASCII characters or 26 hex characters (Example: abcdefghij or 0123456789ABCDEF0123456789).
5. If you want to change more settings, proceed to the appropriate sections. Otherwise click **OK** to automatically reset the modem.

Configure security on the client computers

For each computer on the network, the network authenticity and data encryption must match the security settings used by the MP modem. Be sure to deselect the “Key provided automatically (by server)” option.

Reset the MP modem to factory defaults

You can reset the MP modem to the factory defaults using AT commands or using the reset button.

Note: It's a good idea to have a record of the current settings before reverting to the factory settings.

To record the current settings:

1. In Watcher, select **Tools > AT Commands** and enter the `AT!MPCFGDUMP?`, `AT!MPCFGDUMP?1` and `AT!MPCFGDUMP?2` commands to generate a list of current settings.

To reset the MP modem to its factory default settings using AT commands:

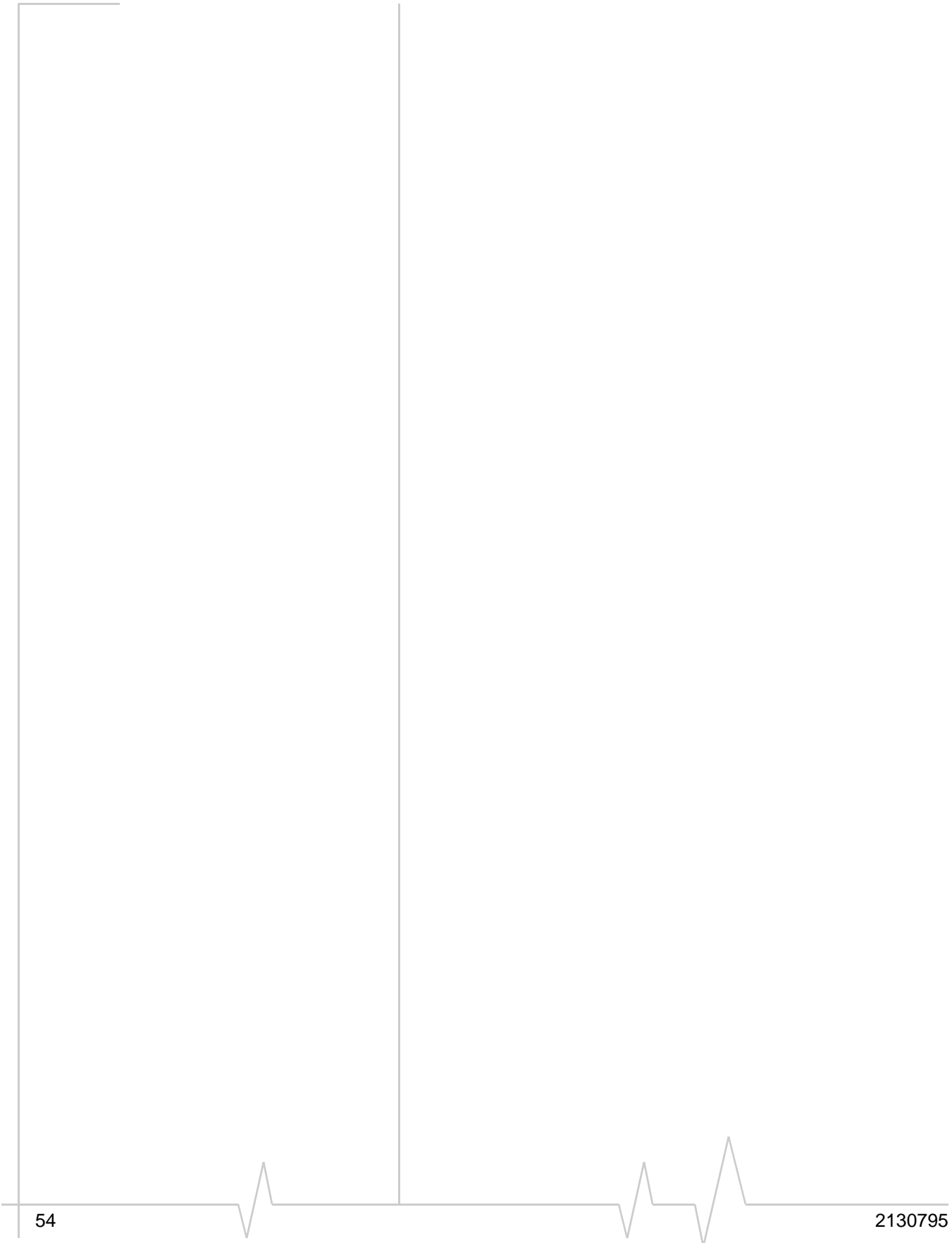
1. Enter the `AT!MPNVDEF` command.

To reset the MP modem to its factory default settings using the reset button:

1. Watch the LEDs and follow this sequence:
 - a. Press and hold the reset button. The LEDs all turn red.
 - b. Release the reset button. The LEDs all turn green and then all go out.

When the LEDs all go out, repeat [step a](#) and [step b](#) until you have pressed the reset button **three times**.

After you release the reset button for the third time, all the LEDs turn green and then all go out. Then the two center LEDs (Tx and Rx) turn red. This indicates that the MP modem has restored the NV settings to the factory defaults. The LEDs then proceed with their regular start-up sequence.



»» | 6: Configuring the MP Modem to Report GPS and I/O Data

- I/O device installation and configuration

The MP modem is capable of reporting position and heading information using the embedded GPS module, as well as the status of sensors, gauges, and alarms connected to the I/O (Input/Output) port. The MP modem is typically installed in a fleet of vehicles with the GPS and/or I/O data being sent to a central office or dispatch for processing.

This chapter describes how to implement local reporting of GPS and I/O data. [Chapter 7](#) describes how to configure your MP modem to exchange data with your private network.

GPS configuration and reporting

GPS receivers use an array of orbiting satellites operated by the United States Department of Defense to triangulate their coordinates on the Earth's surface. In order to use the GPS module in the MP modem, a GPS antenna must be connected to the MP modem. (The installation requires either two antennas—one Main RF and one GPS—or a single combination RF/GPS antenna.)

For more information about GPS, see the *Primer on GPS Operations* (document #2130313) on the Sierra Wireless web site, www.sierrawireless.com.

Note: The “MP 3G Modems TAIP Reference manual” (document #2130312) provides a description of the TAIP commands that can be used with the MP modem. This is available at www.sierrawireless.com. Information about Trimble GPS modules, including more documentation on TAIP commands, is available at www.trimble.com. More information on NMEA message standards is available at www.nmea.org.

GPS protocols and commands

The GPS module supports two methods of reporting navigational information, using either the TAIP (Trimble ASCII Interface Protocol) or NMEA (National Marine Electronics Association) protocols. The GPS module is pre-configured for TAIP. If you are using a GPS application that requires data to be reported according to the NMEA protocol, the MP modem must be reconfigured using an AT command. (See the *MP 3G Modems AT Command Reference* manual (document #2130810).)

NMEA is a reporting protocol only, while TAIP provides the ability to send commands to the module to query for information and configure reports. When the MP modem is set for TAIP, commands can be sent to the MP modem in these ways:

- Using 3G Watcher
- Using AT commands

TAIP commands can be used to:

- Query the MP modem for its current position, heading, and speed
- Enable and disable automatic reporting of GPS data, and set the interval at which automatic reports are sent
- Configure the format of reports

GPS display in 3G Watcher

To view 3G Watcher’s GPS Display window, which reports latitude, longitude, speed, direction, altitude, and local and UTC time¹, select **Tools > Display GPS** or double-click the GPS icon on the main 3G Watcher window.

From a cold start (where the MP modem is powered on with no stored navigational data), it may take up to 39 seconds for the GPS module to obtain satellite fixes and begin reporting.

1. UTC replaces Greenwich Mean Time as the basis for standard time throughout the world. UTC, which uses atomic measurements rather than the Earth’s rotation, is the equivalent of mean solar time at the prime meridian (0° longitude).

GPS TAIP quick reference

The following table is a quick summary of the TAIP message identifiers. For detailed information and message syntax, see the *MP 3G Modems TAIP Reference* manual (document #2130312) and the GPS documentation on TAIP commands available at www.trimble.com.

TAIP Message Identifiers	
AL	Altitude/Vertical Velocity
CP	Compact Position Solution
ID	Identification Number
IP	Initial Position
LN	Long Navigation Message
PV	Position/Velocity Solution
RM	Reporting Mode
RT	Reset
ST	Status
TM	Time / Date
VR	Version Number

I/O device installation and configuration

The I/O port on the MP modem allows for remote monitoring of gauges, sensors, and alarms. You can use this feature to display readings from instruments or gauges and to remotely monitor panic buttons or alarms.

This section describes how to connect and configure these I/O devices to work with the MP modem.

Connecting these devices requires that you make a customized I/O cable. The cable must have, at one end, whatever connector is required by the I/O device, and at the other end, the High Density DB15 connector. The cable wires must pin to the appropriate pin numbers on the I/O connector. The pinouts are described in the next section.

The maximum length of the I/O cable is 15 feet.

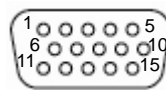
Before using the digital input/output lines, you must configure them as inputs or outputs.

Connector pinouts

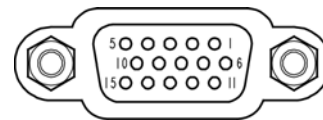
The MP modem’s I/O port is a female DB15HD connector with eight active I/O pins:

- Two (2) **digital I/O** pins.
- Two (2) **digital input** pins.
- Four (4) **analog input** pins.

There are also six reserved pins and one ground pin.



DB15HD male cable



DB15HD female connector on rear of MP modem

1. *Reserved—do not connect*
2. *Reserved—do not connect*
3. Digital Input/Output 1
4. Digital Input 3
5. *Reserved—do not connect*
6. *Reserved—do not connect*
7. Analog Input 2
8. Analog Input 4
9. *Reserved—do not connect*
10. Ground (GND)
11. Digital Input/Output 2
12. Digital Input 4
13. *Reserved—do not connect*
14. Analog Input 1
15. Analog Input 3

Figure 6-1: Pinouts for a male DB15HD I/O cable (left) that connects to the MP modem’s female DB15HD I/O connector (right). Note that the two figures’ pinouts are mirror images of each other, since they plug into one another.

Port specifications

See “I/O port characteristics” on page 75 for the technical specifications of the I/O ports, including input voltages.

Digital input devices

Digital input devices are those that have only two states and send a signal to the MP modem in one of those states. An example of a digital input device might be a gun rack alarm that sends a signal to the MP modem any time the gun rack is open. Another example would be a panic button that sends a signal to the MP modem when it is pushed.

Note: No more than 36 VDC should be applied to any I/O pins.

A digital input can be connected to four of the pins on the DB15HD connector: Pins 3, 4, 11, and 12. (Pins 3 and 11 could alternatively be used for digital output.)

Note: Before using the input/output lines, you must configure them as inputs or outputs.

Typically a digital input device should be connected between Ground (Pin 10) and the input port (Pin 3, 4, 11, or 12).

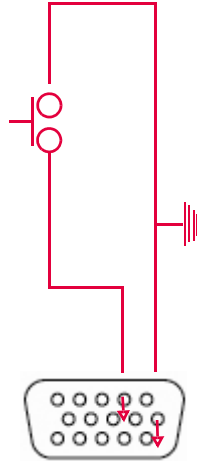


Figure 6-2: A button wired to Pin 4 (digital input) and Pin 10 (Ground).

The pins report a logic high on an input of 3.45 VDC. An internal pull-up resistor provides a high condition when the switch is open.

The digital input pins report a logic low on an input between 0 VDC and 0.8 VDC. Sinking the input pin to ground yields a logic low (0x00) when the port is polled.

If you configure the MP modem to send data to a network server, digital input data can be remotely monitored.

Example: panic button connections

An I/O cable for a panic button requires a wire to one of the digital input or I/O pins (such as #3) and one wire to the Ground pin (#10).

Digital output devices

Digital output devices are those that have only two states and the state is controlled by a signal from the MP modem. Any device that is to be switched on and off from 3G Watcher would be installed as a digital output device.

A digital output can be connected to two of the pins on the DB15HD connector: Pins 3 and 11. (These can be used for either input or output.)

Note: Before using the input/output lines, you must configure them as inputs or outputs.

Typically a digital output device should be connected between Ground (pin 10) and the output port (Pin 3 or 11).

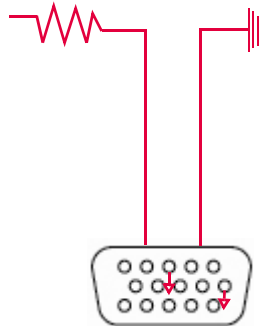


Figure 6-3: Wiring for using Pin 3 (digital output) as an electronic switch. Pin 10 is Ground.

The digital I/O ports provide open-collector output to a maximum of 500 mA.

Analog input devices

Analog input devices are those that generate a signal of varying voltage, based on the state of an instrument or gauge. An example of an analog input device might be a sensor that detects the vehicle's speed.

An analog input can be connected to four of the pins on the DB15HD connector: Pins 7, 8, 14, and 15.

Typically an analog input device should be connected between Ground (pin 10) and the input port (Pin 7, 8, 14, or 15).

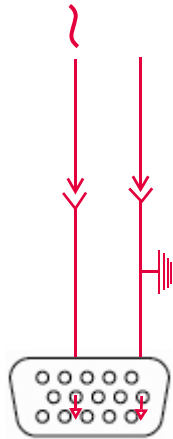


Figure 6-4: A sensor wired to Pin 7 (analog input) and Pin 10 (Ground).

The analog input ports use a 10-bit (1024-step) analog-to-digital converter over a range from 0 to 3.45 VDC, yielding a digital step resolution of 0.0032 V.

Example: analog sensor connections

An I/O cable for an analog sensor requires a wire to one of the analog input pins (such as #7) and one wire to the Ground pin (#10).

I/O configuration using AT or 3G Watcher commands

Once a sensor, gauge, button, or switch is physically connected to the MP modem, the MP modem must be configured to manage the input from, or output to, the device. This configuration can be done using either AT commands or using 3G Watcher.

For a list of AT commands, please see the *MP 3G Modems AT Command Reference* manual (document #2130810).

There are separate windows in 3G Watcher for configuring the analog and digital ports.

Analog input setup

The Analog Input window (**Tools > Options > MP > Input/Output**) is used to configure devices on the four analog inputs. Each tab corresponds to a pin:

Analog Tab	Connector Pin
Input 1	14
Input 2	7
Input 3	15
Input 4	8

To configure an analog sensor or gauge, select the tab that corresponds to the pin you are using and complete the fields as follows:

- **Label:** Enter a description of the sensor or gauge (Measured Voltage, Vehicle Speed, etc.), up to 20 characters long.
- **Raw value:** Shows the analog value from the input (read-only). The analog input has a 10-bit (1024-step) resolution, so the raw value range is between 0 and 1023.
- **Zero scale:** Enter the minimum value for the units you are reporting (used to convert the raw analog value of zero).
- **Full scale:** Enter the maximum value for the units you are reporting (used to convert the raw value of 1023).
- **Current value:** Shows the resulting converted value using the zero and full scales entered.
- **Unit:** Specify the units of the input (volts, km/h, etc.), up to 20 characters long.

Example

If you are measuring temperature, and the thermometer you have connected to the I/O connector measures between -30 (raw value 0) and +50 (raw value 1023) degrees Celsius, then your zero scale is -30.0 and your full scale is 50.0. Your label could be "Temperature", and units, "degrees C".

The measurements are calculated for the 81-degree range (between -30 and +50), which is divided into 1024 steps (0.0791 degrees per unit step). A reading of 25 degrees (56 degrees above the minimum) would therefore show a raw value of 708 (56 degrees/0.0791 degrees per unit).

Digital I/O setup

The Digital Input/Output window (**Tools > Options > MP > Input/Output > Digital I/O**) is used to configure devices on the two digital I/O and two digital input ports. Each tab corresponds to a pin:

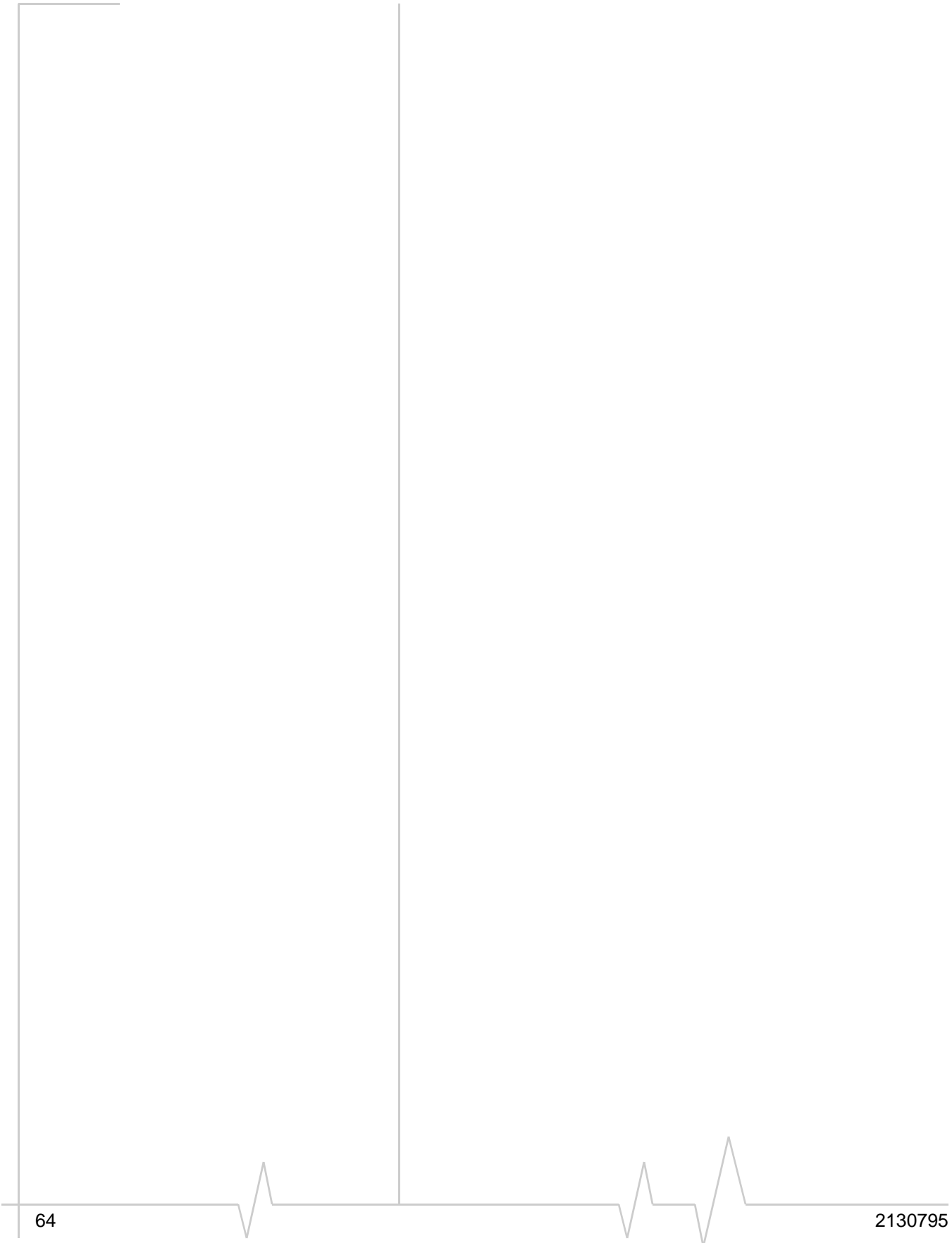
Digital Tab	Connector Pin
I/O 1	Input or output on pin 3
I/O 2	Input or output on pin 11
Input 3	Input on pin 4
Input 4	Input on pin 12

To configure a digital sensor or gauge, select the tab that corresponds to the pin you are using and complete the fields as follows:

- **Label:** Provide a description of the sensor or gauge, up to 20 characters in length.
- **Type:** Select Input, Output, or Not used. (Output is not available on tabs 3 and 4.)
- **Logic low name:** Describe the state of the device at logic level low, up to 20 characters in length. (For example, if a switch in the off position leads to a logic low, you could choose to label it Switched Off.)
- **Logic high name:** Describe the state of the device at logic level high, up to 20 characters in length (such as Switched On).
- **Alarm logic level:** Assign an action associated with the I/O port:
 - **high:** A notification is sent, and the event is logged, if the state changes from a logic low to a logic high.
 - **low:** A notification is sent, and the event is logged, if the state changes from a logic high to a logic low.
 - **log only:** No notification is sent, but any change in logic level is logged.

The name and location of the log file is specified in the Input/Output window (**Tools > Options > MP > Input/Output**). By default, the log file is located in the program folder or user folder and is called *MpIoLog.txt*.

- **Current value:** Shows the current value of the port.



7: Sending Data to Your Network Application

- Retrieve the Unique Mobile Device ID

This chapter discusses how to configure the MP modem to send GPS and I/O data to a network server. This is a simple process, but if there are any firewalls on your network or your service provider's network, the data must be routed through or around the firewall. A general discussion of some methods of dealing with firewalls is provided.

This chapter also explains how to retrieve the Unique Mobile Device ID from the MP modem. This is the number that uniquely identifies each MP modem. Any application that uses the GPS and I/O data from the MP modem requires this number.

Configure the MP modem to route data to a server

Note: For a full list of AT commands and their parameters, see the MP 3G Modems AT Command Reference manual (document #2130810).

The protocol that defines how MP modem data is packaged is called MTP (Monitoring and Tracking Protocol). You can configure MTP in 3G Watcher by selecting **Tools > Options > MP > Monitor and Tracking**, or by using the AT command **AT!MTPMTCNF** and the appropriate parameters.

The MP modem provides four independent reporting engines, allowing data to be sent to four different destinations. You can specify the destination IP address and port number for each engine. This allows, for example, GPS data to be sent to one host application, and I/O data to be sent to another.

You can also specify the values for the timers that determine the frequency with which the data is to be sent.

Report frequency timers

Note: You must configure alarm triggers locally on the MP modem using either 3G Watcher or an AT command.

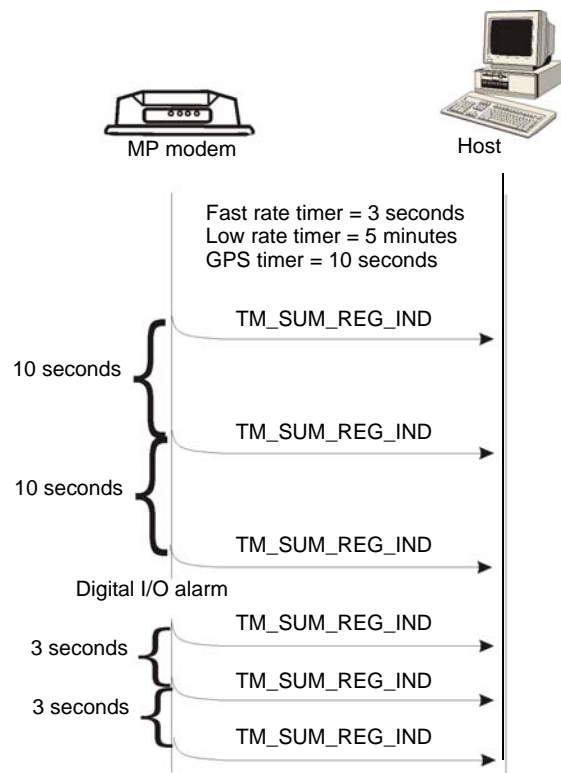
The low rate timer, alert rate timer, and GPS timer control the interval between reports from the MP modem.

The low rate timer sets the interval at which reports are sent in the absence of any other trigger or timer. It is in minutes with a default of five minutes.

The fast rate timer only becomes active when an alarm condition is triggered by a rise or drop in the level of one of the digital I/O channels. The default for the fast rate timer is three seconds.

Note: When the fast rate timer is set to 0, a single report is sent when an I/O alarm is triggered.

If the GPS timer is set to a value other than 0, it controls the frequency of reports in the absence of any alarm or event triggers. (However, if the GPS timer is set to a longer interval than the low rate timer, the value for the low rate timer will determine report frequency.)

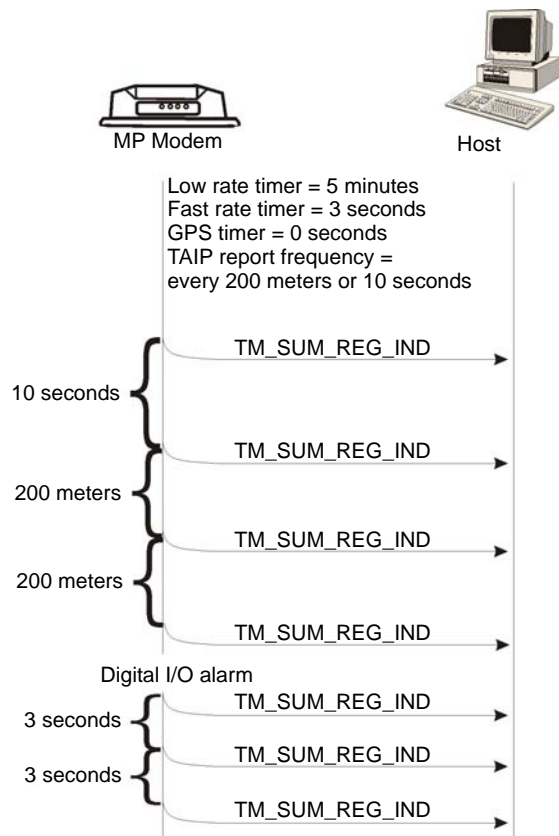


Note: The "MP 3G Modems TAIP Reference manual" (document #2130312) provides a description of the TAIP commands you can use. This is available at www.sierrawireless.com. Information about GPS modules, including more documentation on TAIP commands, is available at www.trimble.com.

If the GPS timer is set to 0, the reporting interval is determined by the configuration of the GPS module. If the module is configured for TAIP, you can issue TAIP commands to change the interval. An advantage of configuring the report frequency with TAIP commands is that the interval between reports can be based on elapsed time and/or distance travelled.

You can issue TAIP commands to the module locally through 3G Watcher using the AT command **AT!MPGPSCMD**. They can also be sent remotely using MP Modem Manager. (See "MP Modem Manager" on page 17.)

Reporting configurations set by sending TAIP commands will be erased if the MP modem is powered off unless the commands are included in the initialization strings for the MP modem. These are executed each time the MP modem is powered on. You can configure them locally by using 3G Watcher (**Tools > Options > GPS**) or the AT command **AT!MPGPSINIT**, or remotely with MP Modem Manager.



Note: More information on NMEA message standards is available at www.nmea.org.

If the module is configured for NMEA, data is sent at five-second intervals. (The interval cannot be changed when the module is configured for NMEA because NMEA is strictly a reporting protocol.)

Monitoring and Tracking configuration

You can use 3G Watcher to configure the MP modem to send MTP data to a network server:

1. Select **Tools > Options > MP > Monitor and Tracking** and complete the appropriate fields.
— or —
1. Issue the AT command **ATIMPMTCONF** along with the required parameters.

IP Addressing

To send data to the MP modem, a host application on a network server requires the IP address of the MP modem. Service providers usually do not provide a static IP address to each device on the network. The IP address is dynamically assigned each time the MP modem registers on the network. This means that the host application must identify each MP modem by its Unique Mobile Device ID (discussed on page 70) and capture its IP address as it registers.

If the MP modem has a public IP address, the host application can simply check the IP address on the incoming data packets to determine the IP address of the MP modem. However, if NAT (Network Address Translation) is in use, the IP address assigned to the MP modem is likely to be a private IP address. This may present problems, as discussed in the next section.

The problem created by Network Address Translation

Note: A similar problem may occur if NAT is in use on your network. The host application may reside on a server that has a private IP address. You must configure the MP modem to send data to a server on your network with a public IP address, and configure the server to recognize the MTP data and route it appropriately.

Many service providers use NAT (Network Address Translation) which effectively creates a firewall in front of the network. Inside the network, the service providers assign private IP addresses to registered devices, since public IP addresses are not needed to route data within the network. (This saves the service provider the expense of having a large pool of public IP addresses.) A public IP address is substituted for the private IP address when data packets pass through the gateway between the network and the Internet. This public IP address might be used on data transmissions from many different devices. Therefore, the network server is only aware of the substituted public IP address. If the server replies to this address, the network cannot identify the device for which the data was intended.

Assume, for example, an MP modem is registered on a network. The MP modem is assigned a private IP address of 10.95.236.1. When the MP modem sends MTP data to the network server, a public IP address of 24.7.6.30 is substituted at the gateway to the Internet. When the network server receives the data, the host application is only aware of the public IP address, 24.7.6.30. However, if the network server sends data back to the IP address 24.7.6.30, the network has no way of identifying the MP modem for which it is intended and is unable to route the data appropriately.

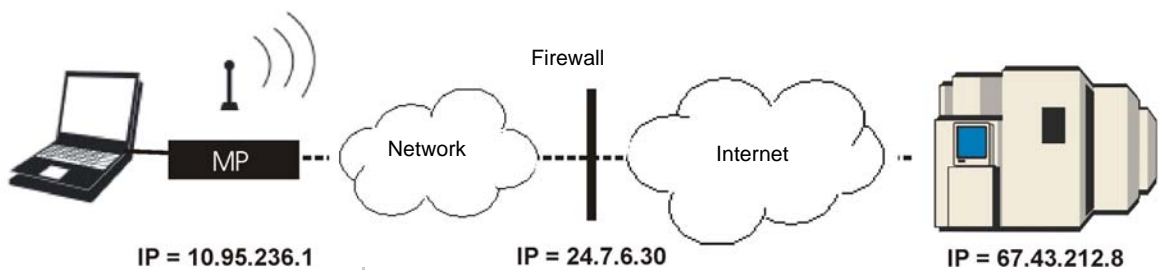


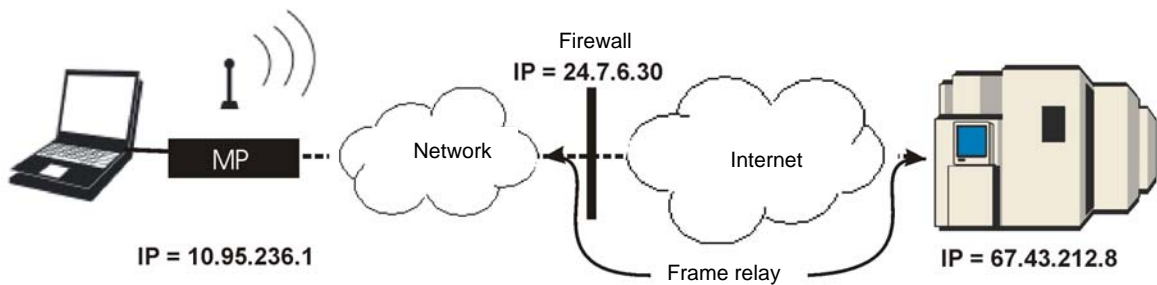
Figure 7-1: An MP modem connected to a network server. In this scenario, the IP address is "NAT'd" from 10.95.236.1 to 24.7.6.30. The network server is only aware of the address 24.7.6.30, but if it sends data to that address the network cannot route the data to the MP modem.

Note: NetMotion Wireless, Inc. develops client-server applications that attempt to overcome the issues caused by NAT addressing by assigning its own consistent private IP addresses. This software offers a potential solution to NAT issues, but it is untested by Sierra Wireless, and Sierra Wireless does not provide support for it.

Solutions to the NAT problem

If your service provider is using NAT, it is best to work with the provider in devising a solution. Some service providers offer, on request, accounts with public IP addresses. (There may be additional charges for this.)

Another solution is to implement a frame relay connection between your network and your service provider's network. The frame relay connection bypasses the address translation, and is a method of overcoming NAT issues encouraged by some service providers.



Retrieve the Unique Mobile Device ID

In order to associate GPS and I/O data with a particular vehicle, you must create a database on your server that links each MP modem's Unique Mobile Device ID to the vehicle in which it is installed. The Unique Mobile Device ID is a number derived from the IMEI (International Mobile Equipment Identity).

Use the AT command **ATI4** to obtain the Unique Mobile Device ID from each MP modem you deploy.

You may also want to assign a device name to the MP modem that identifies the vehicle in which it is installed. You can assign this name locally using 3G Watcher or remotely using MP Modem Manager. The device name is included in the MTP data sent to the network server.

Note: See "MP Modem Manager" on page 17.

»» | 8: Support and Warranty

Technical support

To obtain technical support for your MP modem, and firmware and software upgrades, please contact your account manager.

Online technical support resources are also available at www.sierrawireless.com.

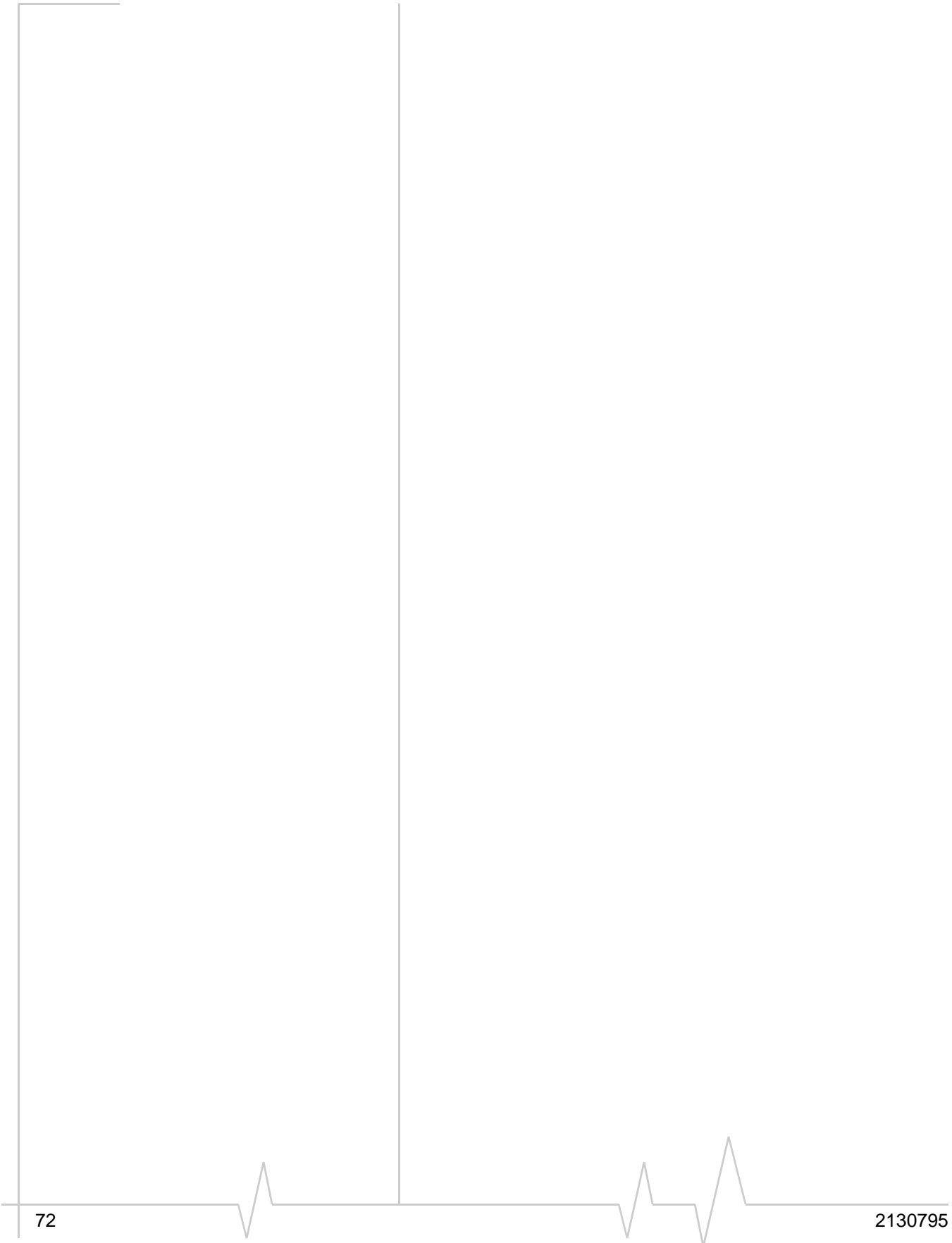
Warranty

Sierra Wireless, Inc. warrants the MP modem against all defects in materials and workmanship for a period of three (3) years from the date of purchase.

The sole responsibility of Sierra Wireless, Inc. under this warranty is limited to either repair or, at the option of Sierra Wireless, Inc., replacement of the MP modem. There are no expressed or implied warranties, including those of fitness for a particular purpose or merchantability, which extend beyond the face hereof.

Sierra Wireless, Inc. is not liable for any incidental or consequential damages arising from the use, misuse, or installation of the MP modem.

This warranty does not apply if the serial number label has been removed, or if the MP modem has been subjected to physical abuse, improper installation, or unauthorized modification.



9: Technical Specifications

This chapter provides technical data for the MP 880WW modem.

Note: The technical specifications are subject to change without notice.

Regulatory, radio frequency and electrical specifications

Approvals	FCC Industry Canada PTCRB EU RoHS
Network compliance	GSM GPRS EDGE: (Class 12), peak 236 kbps downlink UMTS: peak 384 kbps uplink/downlink HSUPA: (Cat 4), peak 2.0 Mbps uplink
Voltage range	9–36 VDC
Reverse polarity protection	Compliant
Current draw	Idle (Ignition sense off): 2 mA ^a Receive: 235 mA Max. transmit: 1.0 Amp peak (at +32 dBm, GSM 850) Max. transmit: 400 mA average (GSM/GPRS/EDGE) Max. transmit: 500 mA average (at +23 dBm, UMTS) Typical transmit: 250 mA average (GSM/GPRS/EDGE) Typical transmit: 350 mA average (UMTS)
Maximum output power	Conducted transmit power: GSM 850 and GSM 900: +32 dBm UMTS: +23 dBm
UMTS/HSUPA	850/1900/2100 MHz
GSM/GPRS / EDGE	850/900/1800/1900 MHz

- a. This applies to a typical installation with a well-matched antenna. All current values are measured with an input voltage of 12V.

Environmental specifications

Operating temperature	-30°C to +70°C (-22°F to +158°F)
Storage temperature	-40°C to +85°C (-40°F to +185°F)
Humidity	95% RH non-condensing MIL 202G, Sections 103B and 106G
Rain / splash	MIL 810F, Section 506.4, Procedure III SAE KJ1455, Section 4.4
Drop	MIL 810F, Section 516.5 SAE J1455, Section 4.10.3.1
Shock	MIL 202G, Section 213B MIL 810F, Section 516.5 SAE J1455, Sections 4.10.3.2 and 4.10.3.4
Vibration	MIL 202G, Section 214 MIL 810F, Section 514.5 SAE J1455, Section 4.9
Sand / dust bombardment	MIL 810F, Section 510.4, Procedures I-III
Salt fog	MIL 810F, Section 509.4
ESD	Operational \pm 6 kV contact, as per IEC 61000-4-2
EU RoHS	Compliant

Weight and dimensions

Weight	0.9 kg (2 lbs)
Height	49 mm (1.93 in)
Width	138 mm (5.43 in)
Length	176 mm (6.93 in)
Case material	Metal
Case surface	Scratch-resistant powder coat paint

Host interfaces

Serial	One — DB9 female
USB	One — USB Type B, USB 1.1/2.0 compliant
Ethernet	One — RJ45 female

Other interfaces

Input / output	One — High-density DB15 female
Network antenna	One — TNC female
GPS antenna	One — SMA female
Reset	One — Manual reset button
Power	One — Molex 39-01-0029 female
AP antenna	One — SMA female

GPS specifications

Satellite channels	12 channel, continuous tracking
Protocols	TSIP, TAIP, NMEA 0183 V3.0
Acquisition times	Re-acquisition: 2 sec. Hot start: 9 sec. Warm start: 35 sec. Cold start: 39 sec.
Accuracy	Horizontal: < 3 m (50%), < 8 m (90%) Altitude: < 10 m (50%), < 16 m (90%) Velocity: 0.06 m/sec
Sensitivity	Tracking: -152 dBm Acquisition: -142 dBm
Operational limits	Velocity: 515 m/sec.

I/O port characteristics

Absolute maximum voltage	-0.3 VDC to 36 VDC
Digital I/O count	Total: 4; two dedicated inputs, two configurable input/outputs

Digital inputs	Open collector, max current 500 mA Vih, min 2 VDC Vil, max 0.8 VDC Vih, max 36 VDC
Digital outputs	Open collector
Analog input count	Total: 4
Analog input	Zero-scale: 0 VDC Full-scale: 3.3 VDC Leakage current: 66 µA

3G Watcher software

Operating systems	Microsoft® Windows® Vista™, 2000, and XP
Languages	
User interface	English, French, German, Spanish, Italian, Japanese, and Simplified Chinese
Online help	English and French

Wireless access point specifications

Standards	IEEE 802.11b, IEEE 802.11g, IEEE 802.11i
Channels	1 (2.412 GHz) to 11 (2.462 GHz)
Band	2.4 GHz Wireless-G
Channels spacing	5 MHz
Security features	Open WPA (Wireless Protected Access) WPA2 Open WEP (64-bit and 128-bit) Shared WEP (64-bit and 128-bit)
Encryption	Wireless Equivalent Privacy (WEP) Temporal Key Integrity Protocol (TKIP) Advanced Encryption Standard (AES)

»» 10: Regulatory Information

- European Union

Note: Unauthorized modifications or changes not expressly approved by Sierra Wireless, Inc. could void compliance with regulatory rules, and thereby your authority to use this equipment.

Canada

To ensure that the MP modem meets Health Canada's Safety Code 6 requirements, a separation distance of at least 20 cm (8 inches) must be maintained between the modem's antenna and the body of the user and any nearby persons at all times and in all applications and uses.

Additionally, the maximum antenna gain in the PCS band, including cable loss, must not exceed 4 dBi, and in the Cellular band, must not exceed 5 dBi, to comply with Industry Canada and Health Canada regulations limiting both maximum RF output power and human exposure to RF radiation.

For the MP 875W modem, the maximum gain for the AP antenna must not exceed 3 dBi, and the AP antenna must be at least 20 cm away from the Main RF antenna.

U.S.A.

To comply with FCC regulations limiting both maximum RF output power and human exposure to RF radiation, the maximum antenna gain, including cable loss, in the PCS band, must not exceed 4 dBi, and in the Cellular band, must not exceed 5 dBi.

The Main RF antenna must be mounted such that there is a separation distance of at least 20 cm (8 inches) between the antenna and the body of the user or any nearby persons.

For the MP 875W modem, the maximum gain for the AP antenna must not exceed 3 dBi, and the AP antenna must be professionally installed with a separation distance of at least 20 cm away from the Main RF antenna, per FCC Part 15 requirements.

Note: This equipment has been tested and found to comply with the limits for a Class A digital device, pursuant to Part 15 of the FCC Rules. These limits are designed to provide reasonable protection against harmful interference when the equipment is operated in a commercial environment. This equipment generates, uses, and can radiate radio frequency energy and, if not installed and used in accordance with the instruction manual, may cause harmful interference to radio communications. Operation of this equipment in a residential area is likely to cause harmful interference in which case the user will be required to correct the interference at his own expense.

Important Note

To comply with FCC RF exposure compliance requirements, the antenna used for the WiFi transmitter must be installed to provide a separation distance of at least 20 cm from all persons and must not be co-located or operating in conjunction with any other antenna or transmitter.”

FCC Caution

Any changes or modifications not expressly approved by the party responsible for compliance could void the user's authority to operate this equipment.

Approved antennas

The WiFi antennas approved for use with this device must be of either a PCB omni antenna with a gain of no more than +2 dBi, or a dipole antenna with a gain of no more than +5dBi. No other antennas are approved for use with this device.”

European Union

Sierra Wireless declares that the MP 875 ruggedized wireless modem and the MP 875 ruggedized wireless modem with 802.11 b/g access point conform to all the essential requirements of Directive 1999/5/EC.



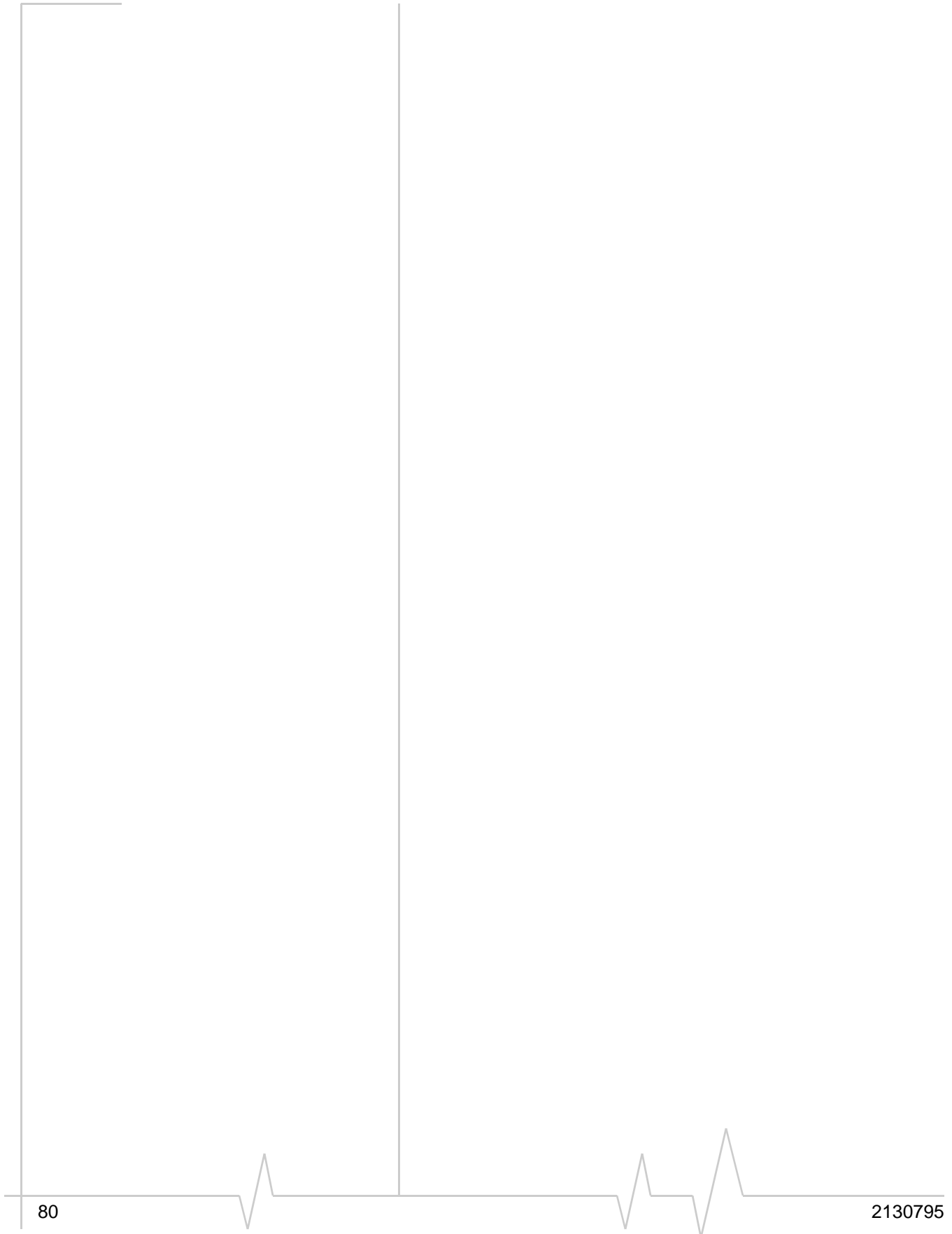
MP 875 ruggedized wireless modem



MP 875 ruggedized wireless modem
with 802.11 b/g access point

The technical documentation relevant to the above equipment
is held at:

Sierra Wireless (UK) Limited
Lakeside House
1 Furzegraoun Way, Stockley Park East
Uxbridge, Middlesex
UB11 1BD
England



»» Index

Numerics

3G Watcher, 43–46

A

account, 35
alert rate timer, 69
analog input
 configuration, 66
 wiring, 64
analog sensor, 65
antenna, 27
antenna connector, 24
AP antenna, 81
approvals, 77
AT commands
 back up settings, 57
 I/O configuration, 65
 MTP configuration, 69
 port mapping, 50
 port routing, 51
 reset modem, 50, 51
 static IP addressing, 50
 static routing, 50, 51
 unique mobile device ID, 74
 unlock the MP modem configuration, 50
audio connector, 24
autolaunch
 application on high-speed connection, 38
 browser on high-speed connection, 38
 VPN on high-speed connection, 38

B

browser, launch automatically on high-speed connection, 38

C

configuration, unlock, 54
connectors, 24
current, 77
current settings, backup, 57

D

DB15HD
 connector, 24
DB9
 pinouts, 34
 See also serial.

DB9, connector, 24
device name, 74
dial-up connections, 12
digital input
 configuration, 67
 wiring, 62
digital output
 configuration, 67
 wiring, 64
dimensions, 78
documentation, 15

E

EDGE, 12
electrostatic discharge (ESD), 78

F

firewall, 73
frequency bands, 13

G

gauges. *See* I/O devices
GPRS, 12
GPS
 antenna, 28
 configuration and reporting, 59–61
 connector, 24
 performance, 79
 timer, 69
grounding, 26, 32

H

headset, connector, 24
height, 78
Host interfaces, 79
HSDPA, 12
humidity, 78

I

I/O
 cable, 35
 connector, 24
I/O devices, 61–67
 alarm, 70
 analog, 64
 digital, 62



I/O port characteristics, 79
ignition options, 41
ignition wiring, 30, 30
inputs. *See* I/O devices
interfaces, 79

L

launch
 browser automatically on high-speed connection, 38
 VPN automatically on high-speed connection, 38
LEDs, 42
low rate timer, 69

M

manuals, 15
mode
 NAT, 48, 49
 non-NAT, 48
mounting, 25–26
MTP
 configuring, 69
 report frequency, 69

N

NAT, 47, 73
NAT mode, 48, 49
Network Address Translation. *See* NAT.
NMEA, 60
non-NAT mode, 48

O

on/off switch, 30
output power, 77
outputs. *See* I/O devices.

P

panic button, 63
password
 change, 54
 prompt for, 37
pinouts (on I/O connector), 62
port forwarding, 50
power connector, 24, 30
power harness, 30, 32

power on options, 41
power supply, 20
power wiring, 29
private IP address, 73
profiles, creating, 37
prompt for password, 37
public IP address, 73

R

receive diversity, 13
regulatory information, 81
report frequency, 69
reporting engines, 69
reset button, 43, 57
roaming, 12
router functions, enable, 50

S

sensors. *See* I/O devices
serial cable, maximum length, 20
serial connector, 24
serial, versus USB, 13
shock, 78
SIM, insertion, 36
SMA connector, 24
specifications, 77–79
static IP, 50
status indicators, 42

T

TAIP, reporting protocol, 60
TCP/UDP port forwarding, 50
technical specifications, 77–79
temperature
 operating, 78
 storage, 78
timers, report frequency, 69
TNC connector, 24

U

UMTS, 12
unique mobile device ID, 74
unlock MP modem configuration, 54
USB cable, maximum length, 20
USB connector, 24
USB, versus serial connection, 13

V

vibration, [78](#)
virtual serial port, [13](#)
voltage, [62](#)
voltage range, [77](#)
voltage specifications (serial cable), [34](#)
VPN support, [14](#)
VPN, launch on high-speed connection, [38](#)

W

WAP
 enable, [54](#)
 overview, [53](#)
 specifications, [80](#)
warranty, [75](#)
Watcher, [43–46](#)
weight, [78](#)
width, [78](#)
wire splicing, [32](#)
Wireless Access Point. *See* WAP.

