



**Intel® Modular Server System MFSYS25,
Intel® Modular Server System MFSYS35,
Intel® Compute Module MFS5000SI,
Intel® Compute Module MFS5520VI**

Tested Hardware and Operating System List

Revision 2.5

January, 2010

Enterprise Platforms and Services Division

Revision History

| Date | Revision Number | Modifications |
|-------------------|------------------------|--|
| November, 2007 | 1.0 | Initial Release |
| January, 2008 | 1.1 | Added support for Windows 2003 Server, clarified Virtualization Software testing/certification details |
| January 22 , 2008 | 1.2 | Added Fujitsu 146GB 2.5" HDD |
| January 25 , 2008 | 1.3 | Corrected 146BG FJ HDD – 10K instead of 15K drive |
| February 1, 008 | 1.4 | Added SLES 10 64-bit Stress Testing and Novell Certification Status for both 32 & 64-bit versions |
| August, 2008 | 1.5 | Added VMware ESX Server 3.0.2 U1 GA Certification and Windows 2008 Server support. Updated USB Device list. |
| December, 2008 | 1.6 | Updated OS support. Added initial MFSYS35 HDD information. |
| January 9, 2009 | 1.7 | Corrected Hard Drive FW revisions in Table 5.2 Tested Hard Drives |
| January 16, 2009 | 1.8 | Corrected Xyratec external array information, added note for 3.5" drives-mixing of SAS and SATA not supported. |
| March, 2009 | 1.9 | Updated Table 4.6 External Tape Drives and Table 5.2 Tested HDDs |
| June, 2009 | 2.0 | Added Intel® Compute Module MFS5520VI to this document. Updated tables with new HDD and OS information. |
| July, 2009 | 2.1 | Added back external storage information that was inadvertently removed. |
| September, 2009 | 2.2 | Remove EOL external storage SSR212PP, correct ST9500430SS product family information. |
| October 21 2009 | 2.3 | Added 2.5" SSD, SATA drives, updated supported OS, and system configuration information. |
| October 28, 2009 | 2.4 | Added new 2.5" SAS drives, updated supported OS information. |
| January 14, 2010 | 2.5 | Updated tables with new HDD and OS information. Added new tape drive and USD DVD drive. |

Disclaimers

THE INFORMATION IN THIS DOCUMENT IS PROVIDED "AS IS" WITH NO WARRANTIES WHATSOEVER, INCLUDING ANY WARRANTY OF MERCHANTABILITY, FITNESS FOR ANY PARTICULAR PURPOSE, OR ANY WARRANTY OTHERWISE ARISING OUT OF ANY PROPOSAL, SPECIFICATION, OR SAMPLE.

Information in this document is provided in connection with Intel® products. No license, express or implied, by estoppel or otherwise, to any intellectual property rights is granted by this document. Except as provided in Intel's Terms and Conditions of Sale for such products, Intel assumes no liability whatsoever, and Intel disclaims any express or implied warranty, relating to sale and/or use of Intel products including liability or warranties relating to fitness for a particular purpose, merchantability, or infringement of any patent, copyright or other intellectual property right. Intel products are not intended for use in medical, life saving, or life sustaining applications.

Intel retains the right to make changes to its test specifications at any time, without notice.

The hardware vendor remains solely responsible for the design, sale and functionality of its product, including any liability arising from product infringement or product warranty.

Copyright © Intel Corporation 2010. All rights reserved.

Intel, the Intel logo, and EtherExpress are trademarks or registered trademarks of Intel Corporation or its subsidiaries in the United States and other countries.

*Other names or brands may be claimed as the property of others.

Table of Contents

| | |
|---|-----------|
| 1. Introduction | 6 |
| 1.1 Test Overview | 6 |
| 1.1.1 Basic Installation Testing | 6 |
| 1.1.2 I/O Expansion Card / Peripheral Compatibility and Stress Testing..... | 7 |
| 1.2 Pass/Fail Test Criteria..... | 8 |
| 2. MFS5000SI / MFS5520VI / MFSYS25 / MFSYS35 Base System Configurations..... | 10 |
| 3. Supported Operating Systems & Software..... | 11 |
| 3.1 Operating System Certifications | 13 |
| 3.2 Operating System Storage Component Support..... | 17 |
| 4. I/O Expansion Cards & Peripherals | 18 |
| 4.1 Ethernet Expansion Card..... | 19 |
| 4.2 Monitors..... | 19 |
| 4.3 USB Devices | 19 |
| 4.4 Ethernet Switch Modules | 21 |
| 4.5 Storage Control Modules | 21 |
| 4.6 External Tape Drives..... | 21 |
| 4.7 External Storage..... | 21 |
| 5. Hard Disk Drives | 22 |
| 6. Installation Guidelines..... | 25 |
| 6.1 Slipstreamed install for Windows 2003 Enterprise Edition (32 & 64 bit)..... | 25 |
| 6.2 Windows 2003 Enterprise Edition (32 & 64 bit) Remote Installation Method | 26 |
| 6.3 Red Hat Enterprise Linux 5.0 (32 & 64 bit) Remote Installation Method | 30 |
| 6.4 SuSE Linux Enterprise Server 10 (32 & 64 bit) Remote Installation Method | 36 |

List of Tables

| | |
|--|----|
| Table 2.1 Base System Configurations Tested..... | 10 |
| Table 3.1 Operating Systems Tested..... | 11 |
| Table 3.2 Operating System Certifications, MFS5000SI | 13 |
| Table 4.1 Intel® Compute Module MFS5000SI / MFS5520VI Supported Items | 19 |
| Table 4.2 Intel® Modular Server System MFSYS25 / MFSYS35 Supported Peripherals | 21 |

1. Introduction

This document is intended to provide users of the Intel® Modular Server System MFSYS25/MFSYS35, Intel® Compute Module MFS5000SI and Intel® Compute Module MFS5520VI with a guide to the different operating systems, expansion cards, and peripherals Intel plans to test on this platform.

This document will continue to be updated as new expansion cards, peripherals, and operating systems are tested or until the Intel® Modular Server System MFSYS25/MFSYS35, Intel® Compute Module MFS5000SI and Intel® Compute Module MFS5520VI are no longer in production. Each new release of the document will present updated information as well as continue to provide the information from previous releases.

Intel will only provide support for those expansion cards and peripherals under the specified system configuration (System BIOS and Firmware revisions) and operating systems versions with which they were tested.

1.1 Test Overview

Testing performed on the Intel® Modular Server System MFSYS25/MFSYS35, Intel® Compute Module MFS5000SI and Intel® Compute Module MFS5520VI is classified under two separate categories: Basic Installation Testing, and Expansion Card/ Peripheral Compatibility and Stress Testing.

1.1.1 Basic Installation Testing

Basic installation testing is performed with each supported operating system. Basic installation testing validates that the server board can install the operating system and that the base hardware feature set is functional. A small set of peripherals is used for installation purposes only. No expansion cards are tested. Testing includes network connectivity and running of proprietary and industry standard test suites.



The latest version of an operating system signifies the latest supported version at the time of the actual test run. Each new release of this document may have a newly supported release of a given operating system. Previous releases of a supported operating system may not be tested beyond the basic installation test process.

1.1.1.1 Support Commitment for Basic Installation Testing

Intel commits to provide the following level of customer support for operating systems that receive only basic installation testing:

- Intel will provide and test operating system drivers for each of the server board's integrated controllers, provided that the controller vendor has a driver available upon request. Vendors will not be required by Intel to develop drivers for operating systems that they do not already support. This may limit the functionality of certain server board integrated controllers.
- Intel will support customer issues that involve installation and/or functionality of operating system with the server board's integrated controllers only if a driver has been made available.
- Intel will NOT provide support for issues related to use of any 3rd party expansion cards or peripherals installed in the server system when an operating system that received basic installation testing only is in use.
- Support is defined as assistance in root causing issues, and determining a customer acceptable resolution to the issue associated with the operating system. The resolution may include, but is not limited to on-board controller driver changes, engaging the vendor for resolution, BIOS changes, firmware changes, or determining a customer acceptable workaround for the issue.

1.1.2 I/O Expansion Card / Peripheral Compatibility and Stress Testing

I/O Expansion Card / Peripheral Compatibility and Stress testing is performed only on the most current release of a supported operating system at the time of a given validation run. The I/O Expansion Card / Peripheral Compatibility and Stress testing process consists of three areas: Base Platform, I/O Expansion Card Compatibility, and Stress.

Base Platform: Each base platform will successfully install a given operating system, successfully run a disk stress test, and successfully run a network stress test.

I/O Expansion Card Compatibility: I/O Expansion Card compatibility validation (CV) testing uses test suites to gain an accurate view of how the server performs with the available expansion card under the primary supported operating systems. These tests are designed to show hardware compatibility between the cards and the server platform and include functional testing only. No heavy stressing of the systems or the cards is performed for CV testing.

Stress Testing: This test sequence uses configurations that include expansion cards in all available slots, for a minimum 72-hour test run without injecting errors. Each configuration passes an installation test, a Network/Disk Stress test, and tape backup test. Any fatal errors that occur will require a complete test restart.

1.1.2.1 Support Commitment for I/O Expansion Card / Peripheral Compatibility and Stress Testing

Intel commits to provide the following level of customer support for operating systems that receive I/O Expansion Card / Peripheral Compatibility and Stress testing:

Intel commits to provide the following level of customer support for operating systems that receive I/O Expansion Card / Peripheral Compatibility and Stress testing:

- Intel will provide support for customer issues with these operating systems involving installation and/or functionality of the server board with or without the I/O Expansion Card and peripherals listed in this document as having been tested under the particular operating system.
- Support is defined as assistance in root causing issues, and determining a customer acceptable resolution to the issue associated with the operating system. The resolution may include, but is not limited to on-board controller driver changes, engaging the vendor for resolution, BIOS changes, firmware changes, or determining a customer acceptable workaround for the issue.
- Intel will provide and test operating system drivers for each onboard video, network, and storage controller.
- Intel will enable vendors to provide driver support for I/O Expansion Cards using these operating systems.
- Intel will go through some of the steps to achieve certification to ensure its customers do not run across any problems, but the actual certification is the responsibility of the individual customer.



For operating systems, adapter cards, and peripherals not listed in this document, there is no support commitment. Intel will consider support requests on a case-by-case basis.

1.2 Pass/Fail Test Criteria

For each operating system, I/O Expansion card, and peripheral configuration, a test passes if specific criteria are met. Specific configurations may have had particular characteristics that were addressed on a case-by-case basis. In general, a configuration passes testing if the following conditions are met:

The operating system installed without error.

Manufacturer's installation instructions or Intel's best-known methods (BKMs) were used for the operating system installation.

In some cases rKVM BKMs used involve workarounds and were required during the operating system installation.

The server system behaved as expected during and after the operating system installation.

Application software installed and executed normally.

Hardware compatibility tests ran to completion without error.

Test software suites executed successfully

Test and data files were created in the correct directories without error.

Files copied from client to server and back compare to the original with zero errors reported.

Clients remain connected to the server system.

Industry standard test suites run to completion with zero errors reported.

All Intel® Compute Module testing was performed using the Intel® Server Modular System MFSYS25 and/or the Intel® Server Modular System MFSYS35.

2. MFS5000SI / MFS5520VI / MFSYS25 / MFSYS35

Base System Configurations

The following table lists the base system configurations tested. Base system configurations will change as new revisions of the Intel® Compute Module MFS5000SI, the Intel® Compute Module MFS5520VI or the Intel® Modular Server System MFSYS25/MFSYS35 are released and/or new system software stacks are cut onto the boards in the factory. Each base system configuration is assigned an identifier number that is referenced in the tables throughout this document. New base system configurations are added with each new release of this document.



Intel will only provide support for I/O expansion cards and peripherals under the specified base system configuration and operating systems versions with which they were tested.

The following table lists the base system configuration tested.

Table 2.1 Base System Configurations Tested

| Config Id # | Intel® Modular Server System | System PBA/TA Number | Intel® Compute Module | Compute Module PBA/TA Number | Unified Firmware Update Rev | GUI Rev | BIOS Rev | BMC FW Rev | Switch Rev | SCM Rev |
|-------------|------------------------------|--------------------------|------------------------|------------------------------|-----------------------------|---------|----------|------------------|------------|--------------|
| 1 | MFSYS25 | D91400-003 | MFS5000SI | D70726-402 | P2.0.5 | 8633 | 32 | 1.25.1 | 1.0.0.25 | 2.91.140.11 |
| 2 | MFSYS25 | D91400-006I | MFS5000SI | D70726-402 | P2.2.3 | 11328 | 43 | 1.30.3 | 1.0.0.25 | 2.91.140.45 |
| 3 | MFSYS25 | D91400-006I | MFS5000SI | D70726-402 | P2.6 | 14717 | 43 | 1.34.9 | 1.0.0.27 | 3.00.0140.77 |
| 4 | MFSYS35 | D91403-004 | MFS5000SI | D70726-402 | P2.6 | 14717 | 43 | 1.34.9 | 1.0.0.27 | 3.00.0140.77 |
| 5 | MFSYS25 | D91400-006 | MFS5000SI | D70726-402 | V2.7 (1) | 16239 | 48 | 1.35.1 | 1.0.0.27 | 3.02.0140.15 |
| 6 | MFSYS35 | D91403-004 | MFS5000SI | D70726-402 | V2.7 (1) | 16239 | 48 | 1.35.1 | 1.0.0.27 | 3.02.0140.15 |
| 7 | MFSYS25 MFSYS35 | D91400-008 D91403-004 | MFS5000SI MFS5520VI | D70726-501 E41515-402 | V3.0 | 17040 | 48 34 | 1.35.3 1.15.1 | 1.0.0.27 | 3.02.0140.15 |
| 8 | MFSYS25 MFSYS35 | D91400-009 D91403-006 | MFS5000SI MFS5520VI | D70726-501 E41515-402 | V5.0 | 19055 | 48 38 | 1.36.4 1.17.4 | 1.0.0.27 | 3.4.0140.05 |
| 9 | MFSYS25 MFSYS35 | D91400-009 D91403-006 | MFS5000SI MFS5520VI | D70726-501 E41515-402 | V5.5 | 19584 | 48 43 | 1.36.5 1.18.2 | 1.0.0.27 | 3.4.0140.08 |

Notes: All base system configurations tested used the Intel® Compute Module MFS500SI and/or MFS5520VI

(1) Naming convention change from P.x.x to V.x.x, no change to FW package structure

3. Supported Operating Systems & Software

The following table provides a list of the operating systems and software applications that Intel plans to test with the Intel® Compute Module MFS5000SI and MFS5520VI. Each of the listed operating systems was tested for compatibility with the base system configuration listed in Section 2 of this document. Operating systems are supported only with the specified base system configuration(s) with which they were tested.

The following table also indicates whether each operating system received Basic Installation Testing, or Adapter / Peripheral Compatibility and Stress Testing. For information on the support commitments for Basic Installation Testing vs. Adapter / Peripheral Compatibility and Stress Testing, please reference Section 1 of this document.

Any variations to the standard operating system installation processes are documented in the Installation Guidelines section of this document. If no installation guidelines are noted in the following table, then the operating system installed as expected using manufacturer's installation instructions or Intel's best-known methods.



Operating systems supported by Intel® System Management Software may be different than the operating systems supported by the Intel® Compute Module MFS5000SI or MFS5520VI. Please reference the Readme and User Guide documents that are included as part of the Intel System Management Software distribution for operating systems that are supported by that release.

Table 3.1 Operating Systems Tested

| Operating System | Type of Testing | Notes |
|---|--|--|
| Microsoft Windows* 2003 Enterprise (32-bit), R2 SP2 | Configuration 9 - Compatibility & Stress | Intel's testing was completed with Microsoft Windows Server 2003 Enterprise R2 SP2, 32-bit. Although not specifically tested on this product, the MFS5000SI compute module also supports Microsoft Windows Server 2003 R2, 32-bit. |
| Microsoft Windows* 2003 Enterprise (64-bit), R2 SP2 | Configuration 9 -Compatibility & Stress | Intel's testing was completed with Microsoft Windows Server 2003 Enterprise R2 SP2, 64-bit. Although not specifically tested on this product, the MFS5000SI compute module also supports Microsoft Windows Server 2003 R2, 64-bit. |
| Microsoft Windows* 2008 Enterprise (32-bit) | Configuration 9 -Compatibility & Stress | |
| Microsoft Windows* 2008 Enterprise R2 (64-bit) | Configuration 9 -Compatibility & Stress | |

Intel® Modular Server System MFSYS25, Intel® Modular Server System MFSYS35, Intel® Compute Module MFS5000SI, Intel® Compute Module MFS5520VI

| Operating System | Type of Testing | Notes |
|--|--|---|
| Microsoft Hyper-V Server 2008 (64-bit) | Configuration 9 -Compatibility & Stress | |
| Red Hat Enterprise Linux AS 5.0 U4 (32-bit) | Configuration 9 Basic Installation | This OS is currently only supported in a single SCM environment. Shared LUN is not supported under this OS. |
| Red Hat Enterprise Linux AS 5.0 U4 Basic kernel (64-bit) | Configuration 9 -Compatibility & Stress | |
| SuSE Linux Enterprise Server 11 Basic kernel (32-bit), | Configuration 9 - Basic Installation, Compatibility Only | This OS is currently only supported in a single SCM environment. Shared LUN is not supported under this OS. A user can develop a STONITH implementation for SLES 10 cluster utilizing the SNMP Power Control BKM posted at the following link: http://www.intel.com/support/motherboards/server/sb/CS-030380.htm |
| SuSE Linux Enterprise Server 11 Basic kernel (64-bit), | Configuration 9 - Compatibility & Stress | A user can develop a STONITH implementation for SLES 10 cluster utilizing the SNMP Power Control BKM posted at the following link: http://www.intel.com/support/motherboards/server/sb/CS-030380.htm |
| SCO UnixWare 7.1.4 | Configuration 7 -Compatibility | Operating system was tested and is supported by SCO. In addition, this OS is currently only supported in a single SCM environment. http://www.sco.com/chwp |
| SCO OpenServer Release 6 | Configuration 7 -Compatibility | Operating system was tested and is supported by SCO. In addition, this OS is currently only supported in a single SCM environment. http://www.sco.com/chwp |
| SCO OpenServer Release 5.07 | Configuration 7 -Compatibility | Operating system was tested and is supported by SCO. In addition, this OS is currently only supported in a single SCM environment. http://www.sco.com/chwp |
| VMware ESX Server 3.5 U4 | Configuration 9 -Compatibility | |
| VMware ESXi Server 3.5 U4 | Configuration 9 -Compatibility | |
| Vmware ESX 3.5 for MFSYS25/MFSYS35 Storage | Configuration 9 -Compatibility | |
| Vmware ESX 3.5i for MFSYS25/MFSYS35 Storage | Configuration 9 -Compatibility | |
| VMware ESX Server 4.0 | Configuration 9 -Compatibility | |
| VMware ESXi Server 4.0 | Configuration 9 -Compatibility | |
| Client Web Browsers (for CMM interface) | Type of Testing | Notes |
| Microsoft Internet Explorer 7.0 | Configuration 9 -Compatibility | |

Intel® Modular Server System MFSYS25, Intel® Modular Server System MFSYS35, Intel® Compute Module MFS5000SI, Intel® Compute Module MFS5520VI

| | | |
|---|--------------------------------|---|
| Microsoft Internet Explorer 8.0 | Configuration 9 -Compatibility | |
| Mozilla Firefox 3.x | Configuration 9 -Compatibility | Firefox 3.x is not supported on SLES 10 client. For SLES 10 client use Firefox 2.x. |
| Client Java Engines (for CMM interface and remote KVM) | Type of Testing | Notes |
| Sun Java Plugin 6.17 | Configuration 9 -Compatibility | Sun Java Plugin 6.3 or above |
| Client OS | Type of Testing | Notes |
| Microsoft Windows* XP Professional, SP3 | Configuration 9 -Compatibility | |
| Microsoft Vista* Business (64-bit) SP2 | Configuration 9 -Compatibility | |
| Microsft Windows 7 (64 bit) | Configuration 9 -Compatibility | |
| Red Hat Enterprise Linux 5.0 Desktop (64-bit) | Configuration 9 -Compatibility | |
| Novell SuSe Linux Desktop 1112 (64-bit) | Configuration 9 -Compatibility | |

3.1 Operating System Certifications

Listed below are the operating systems that Intel plans to certify with the Intel® Compute Module MFS5000SI and Intel® Compute Module MFS5520VI. However, the customer is responsible for their own certification from the individual operating system vendors. In many cases, the customer may leverage their operating system certifications from Intel’s testing. See the “Comments” section next to each operating system in the table below for additional information. Intel’s certifications, pre-certification, and operating system testing may help reduce some of the risk in achieving customer certifications with the operating system vendors.

Table 3.2 Operating System Certifications, MFS5000SI

| Operating System | Certification Listing | Comments |
|--|---|---|
| Microsoft Windows* 2003 Enterprise Server (32 & 64-bit) | Intel® Modular Server System MFSYS25/ MFS5000SI SID# 1270300 | Certification available at launch. OEM must request certification by Microsoft for their specific product. |
| Microsoft Windows* 2008 Enterprise Server (32 & 64-bit) | Intel® Modular Server System MFSYS25/ MFS5000SI SID# 129928 | Certification available. OEM must request certification by Microsoft for their specific product. |
| Red Hat* Enterprise Linux Adavanced Server 5.0 (32 & 64-bit) | Intel® Modular Server System MFSYS25/ MFS5000SI SID# 385741 | Certification for single SCM configuration only. Certification available at launch. Red Hat checks Intel’s results, certifies (if appropriate), and posts the certificate on their web site. Customer can leverage the Intel certification, if customer product meets the operating system vendor standard. http://hardware.redhat.com/hcl/?pagename=hcl&view=certified&vendor=399&class=8#list |

Intel® Modular Server System MFSYS25, Intel® Modular Server System MFSYS35, Intel® Compute Module MFS5000SI, Intel® Compute Module MFS5520VI

| Operating System | Certification Listing | Comments |
|---|---|--|
| SuSE Linux Enterprise Server 10 SP1 (32 & 64-bit) | Intel® Compute Module MFS5000SI YES Certification Bulletin 95560 | Certification for single SCM configuration only. YES Certification Bulletin's can be located on Novell's website. http://developer.novell.com/yessearch/Search.jsp |
| SCO UnixWare 7.1.4 | Intel® Compute Module MFS5000SI | Certification details available on SCO's website: http://www.sco.com/chwp |
| SCO OpenServer Release 6 | Intel® Compute Module MFS5000SI | Certification details available on SCO's website: http://www.sco.com/chwp |
| SCO OpenServer Release 5.0.7 | Intel® Compute Module MFS5000SI | Certification details available on SCO's website: http://www.sco.com/chwp |

Intel® Modular Server System MFSYS25, Intel® Modular Server System MFSYS35, Intel® Compute Module MFS5000SI, Intel® Compute Module MFS5520VI

| Virtualization Software | Certification Listing | Comments |
|---|--|--|
| VMware ESX Server 3.0.2 U1 | GA Certification | This recipe is available only through the ESAA program. Please visit http://www.esaa-members.com to sign up |
| VMware ESX Server 3.5 U4 | Intel® Compute Module MFS5000SI | This recipe is available only through the ESAA program. Please visit http://www.esaa-members.com to sign up |
| VMware ESXi Server 3.5 U4 | Intel® Compute Module MFS5000SI | This recipe is available only through the ESAA program. Please visit http://www.esaa-members.com to sign up |
| Vmware ESX 3.5 U4 for MFSYS25/MFSYS35 Storage | Intel® Modular Server MFSYS25 Intel® Modular Server MFSYS35 Pending | This recipe is available only through the ESAA program. Please visit http://www.esaa-members.com to sign up |
| Vmware ESX 3.5i for MFSYS25/MFSYS35 Storage | Intel® Modular Server MFSYS25 Intel® Modular Server MFSYS35 Pending | This recipe is available only through the ESAA program. Please visit http://www.esaa-members.com to sign up |
| VMware ESX Server 4.0 | Intel® Compute Module MFS5000SI | Certification for single SCM configuration only. This recipe is available only through the ESAA program. Please visit http://www.esaa-members.com to sign up |
| VMware ESXi Server 4.0 | Intel® Compute Module MFS5000SI | Certification for single SCM configuration only. This recipe is available only through the ESAA program. Please visit http://www.esaa-members.com to sign up |
| Vmware ESX 4.0 for MFSYS25/MFSYS35 Storage | Intel® Modular Server MFSYS25 Intel® Modular Server MFSYS35 Pending | This recipe is available only through the ESAA program. Please visit http://www.esaa-members.com to sign up |

Table 3.3 Operating System Certifications, MFS5520VI

| Operating System | Certification Listing | Comments |
|--|---|---|
| Microsoft Windows* 2003 Enterprise Server R2 SP2 (32 & 64-bit) | Intel® Modular Server System MFSYS25/ MFS5520VI SID# 1327210 | Certification available at launch. OEM must request certification by Microsoft for their specific product. |
| Microsoft Windows* 2008 Enterprise Server (32 & 64-bit) | Intel® Modular Server System MFSYS25/ MFS5520VI SID# 1327208 | Certification available. OEM must request certification by Microsoft for their specific product. |
| Red Hat* Enterprise Linux Advanced Server 5.0 U3 (32 & 64-bit) | Intel® Modular Server System MFSYS25/ MFS5520VI SID# Pending | Certification for single SCM configuration only. Certification pending. |
| SuSE Linux Enterprise Server 10 SP2 (32 & 64-bit) SuSE Linux Enterprise Server 10 SP2 (64-bit) Xen kernel | Intel® Compute Module MFS5520VI | Certification Pending |
| Virtualization Software | Certification Listing | Comments |
| VMware ESX Server 3.5 U4 | Intel® Compute Module MFS5520VI | This recipe is available only through the ESAA program. Please visit http://www.esaa-members.com to sign up |

Intel® Modular Server System MFSYS25, Intel® Modular Server System MFSYS35, Intel® Compute Module MFS5000SI, Intel® Compute Module MFS5520VI

| | | |
|---|--|--|
| VMware ESXi Server 3.5 U4 | Intel® Compute Module MFS5520VI | This recipe is available only through the ESAA program. Please visit http://www.esaa-members.com to sign up |
| Vmware ESX 3.5 U4 for MFSYS25/MFSYS35 Storage | Intel® Modular Server MFSYS25 Intel® Modular Server MFSYS35 Pending | This recipe is available only through the ESAA program. Please visit http://www.esaa-members.com to sign up |
| Vmware ESX 3.5i for MFSYS25/MFSYS35 Storage | Intel® Modular Server MFSYS25 Intel® Modular Server MFSYS35 Pending | This recipe is available only through the ESAA program. Please visit http://www.esaa-members.com to sign up |
| VMware ESX Server 4.0 | Intel® Compute Module MFS5520VI | Certification for single SCM configuration only. This recipe is available only through the ESAA program. Please visit http://www.esaa-members.com to sign up |
| VMware ESXi Server 4.0i | Intel® Compute Module MFS5520VI | Certification for single SCM configuration only. This recipe is available only through the ESAA program. Please visit http://www.esaa-members.com to sign up |
| Vmware ESX 4.0 for MFSYS25/MFSYS35 Storage | Intel® Modular Server MFSYS25 Intel® Modular Server MFSYS35 Pending | This recipe is available only through the ESAA program. Please visit http://www.esaa-members.com to sign up |

3.2 Operating System Storage Component Support

Table 3.4 Operating System Storage Component Support

| Operating System | Single SCM | Dual SCM | Shared LUN Single SCM | Shared LUN Dual SCM |
|---|---------------------|---------------|-----------------------|---------------------|
| Microsoft Windows* 2003 Enterprise (32-bit), R2 SP2 | Supported | Supported | Not Supported | Not Supported |
| Microsoft Windows* 2003 Enterprise (64-bit), R2 SP2 | Supported | Supported | Not Supported | Not Supported |
| Microsoft Windows* 2008 Enterprise SP2 (32-bit) | Supported | Supported | Supported | Supported |
| Microsoft Windows* 2008 Enterprise R2 (64-bit) | Supported | Supported | Supported | Supported |
| Red Hat Enterprise Linux AS 5.0 U4(32-bit) | Supported | Not Supported | NotSupported | Not Supported |
| Red Hat Enterprise Linux AS 5.0 U4(64-bit) | Supported | Supported(1) | Supported | Supported(1) |
| SuSE Linux Enterprise Server 11(32-bit), | Supported | Not Supported | Not Supported | Not Supported |
| SuSE Linux Enterprise Server 11(64-bit), | Supported | Supported(1) | Supported | Supported(1) |
| SCO UnixWare 7.1.4 | Supported by vendor | Not Supported | Not Supported | Not Supported |
| SCO OpenServer Release 6 | Supported by vendor | Not Supported | Not Supported | Not Supported |
| SCO OpenServer Release 5.0.7 | Supported by vendor | Not Supported | Not Supported | Not Supported |
| VMWare ESX 3.5 U4 | Supported | Supported | Supported | Supported |
| VMware ESXi 3.5 U4 | Supported | Supported | Supported | Supported |
| VMWare ESX 4.0 | Supported | Supported(2) | Supported | Supported(2) |
| VMWare ESXi 4.0 | Supported | Supported(2) | Supported | Supported(2) |

Note:

- (1) Xen is not supported.
- (2) SP failover for SCM failures and SCM SAS port failures is not supported. Support for SP failover and SAS port failures currently targeted for Q1 2010.

4. I/O Expansion Cards & Peripherals

I/O Expansion card and peripheral compatibility and stress testing will only be performed with the latest version of an operating system at the time the validation testing occurred. The expansion cards and peripherals are divided into categories based on their functionality. All integrated on-board devices are tested by default and are therefore not included in the following tables.

Note that not all expansion cards or peripherals were tested under all operating systems. The following notation is used in the tested adapters and peripherals table below to indicate the support level that Intel provides for a particular adapter under a particular operating system:

| | |
|---------------------|---|
| NT | This expansion card or peripheral has not been tested under this operating system and is not supported under this operating system. |
| ND | This expansion card or peripheral has not been tested under this operating system due to limitations in IHV driver availability, and is not supported under this operating system. |
| SD (Similar Device) | This expansion card/peripheral is supported, but not tested. This expansion card/peripheral model has not been tested with this server board, but Intel will support it based on successful testing of a similar expansion card/peripheral from the same family. Intel has high confidence that this expansion card/peripheral will function correctly with the server board. This expansion card/peripheral uses the same firmware and drivers, and has a nearly identical system interface to another expansion card/peripheral of the same family that has been successfully tested with this server board. In addition, Intel has secured IHV commitment to support the similar expansion card/peripheral equally. Customers should always test expansion card/peripheral as part of the final system configuration prior to deployment. All installation guidelines for the tested expansion card/peripheral also apply to the similar device. |

Any variations to the standard adapter installation process or to expected adapter functionality are documented in the Installation Guidelines section of this document. If there are installation guidelines affecting a particular expansion card/peripheral and operating system combination, these are referenced in the following table. If there are no installation guidelines noted in the following table, then the expansion card/peripheral installed and functioned as expected using manufacturer's installation instructions or Intel's best-known methods.

Table 4.1 Intel® Compute Module MFS5000SI / MFS5520VI Supported Items

| Manufacturer | Model Name | Model Number | Interface | Comments |
|------------------------------------|---|----------------------|---------------------|---------------|
| 4.1 Ethernet Expansion Card | | | | |
| Intel | Intel® Modular Server Accessory -- Dual GbE I/O Expansion MezzCard | AXXGBIOMEZ | Proprietary PCI - E | For MFS5000SI |
| Intel | Intel® Modular Server Accessory -- Dual GbE I/O Expansion MezzCard | AXXGBIOMEZV | Proprietary PCI - E | For MFS5520VI |
| 4.2 Monitors | | | | |
| Viewsonic | 19" LCD VX1935WM | VX1935WM - VGA only | VGA | |
| Viewsonic | 17" LCD VAA 702 | VAA 702- VGA only | VGA | |
| Viewsonic | 19" HD Widescreen | VX1945wm | VGA | |
| Viewsonic | 19" Wide Multimedia LCD Display Monitor | VA1912w | VGA | |
| Viewsonic | 17" Multimedia Digital DVI LCD | VP702b | VGA | |
| Viewsonic | 17" LCD Display Monitor | VA703b | VGA | |
| 4.3 USB Devices | | | | |
| Belkin | USB Hub | F5U021v 4 port hub | USB | |
| CP Technologies | USB Hub | CP-UH-315 4 port hub | USB | |
| Microsoft | Natural Ergonomic USB Keyboard | 4000 V1.0 | USB | |
| Belkin | Ergoboard Pro Keyboard | F8E887-BLK | USB | |
| Belkin | USB Mouse | F8E814-BLK-OPT | USB | |
| Logitech | Optical USB mouse | P/N: 931145-0403 | USB | |
| Logitech | Optical USB Mouse | M-BJ58 | USB | |

Intel® Modular Server System MFSYS25, Intel® Modular Server System MFSYS35, Intel® Compute Module MFS5000SI, Intel® Compute Module MFS5520VI

| Manufacturer | Model Name | Model Number | Interface | Comments |
|--------------|-------------------|-----------------------|-----------|---|
| Logitech | MiniWheel* Mouse | M-UB48 | USB | |
| TEAC | USB Floppy | FD-05-PUB | USB | |
| NEC | USB Floppy | UF0002 | USB | |
| IOMega | USB Storage Drive | 80GB Silver Portable | USB | |
| Lexar | USB Keyfob | USB Jumpdrive 1GB | USB | |
| Lexar | USB Keyfob | USB Jumpdrive 2GB | USB | SD, This USB Keyfob is supported, but not tested. Intel will support it based on successful testing of the Lexar, 1GB, USB Jumpdrive. |
| SanDisk | USB Keyfob | USB Cruzer Micro 1GB | USB | |
| SanDisk | USB Keyfob | USB Cruzer mini 2GB | USB | |
| IOMega | USB Optical Drive | DVD R/W (Super 16xU2) | USB | |
| Liteon | USB Optical Drive | SHM-165P6SX | USB | |
| Liteon | USB Optical Drive | SOSW-1673SU | USB | |
| Liteon | USB Optical Drive | DX-20A4H | USB | |
| Sony | USB Optical Drive | DRX-830UL-G | USB | |
| Sony | USB Optical Drive | DRX-840U | USB | |
| HP | USB Optical Drive | DVD1040E | USB | |
| Sony | USB Optical Drive | DRX-S70UW | USB | |

Table 4.2 Intel® Modular Server System MFSYS25 / MFSYS35 Supported Peripherals

| Manufacturer | Model Name | Model Number | Interface | Comments |
|------------------------------------|----------------------------------|----------------|---------------|---|
| 4.4 Ethernet Switch Modules | | | | |
| Intel | Intel® Gigabit Ethernet Switch | AXXSW1GBS | Gbit Ethernet | |
| 4.5 Storage Control Modules | | | | |
| Intel | Intel® Storage Controller Module | AXXSCM3SS | SAS | |
| 4.6 External Tape Drives | | | | |
| Quantum | Quantum LTO-3 HH | LTO-3 HH SAS | SAS | Tested by vendor. Intel tested with the following configurations: Windows 2003* with Symantec Backup Exec 12 Windows 2008* with Symantec Backup Exec 12 |
| Quantum | Quantum LTO-4 HH | LTO-4 HH SAS | SAS | Tested under Windows 2008* |
| Tandberg | Tandberg StorageLibrary T24 | Model 2471-LTO | SAS | Tested under Windows 2008* |
| 4.7 External Storage | | | | |
| Promise | VTrak E310sS | VTE310sS | SAS | Single storage controller |
| Promise | VTrak E310sD | VTE310sD | SAS | Dual storage controller. Not tested with or supported under Red Hat Enterprise Linux AS 5.0 U3 (32 bit or 64 bit) |
| Promise | VTrak E610sS | VTE610sS | SAS | Single storage controller |
| Promise | VTrak E610sD | VTE610sD | SAS | Dual storage controller. Not tested with or supported under Red Hat Enterprise Linux AS 5.0 U3 (32 bit or 64 bit) |
| Intel | Intel® Storage Server SSR212MC2 | SSR212MC2 | NAS | |
| Xyratex | Xyratex E5412E | E5412E | SAS | 3.07.0015 firmware. Supported by vendor in single SCM configuration only for the following Operating Systems: Microsoft Windows* 2003 Enterprise R2 SP2, Microsoft Windows* 2008 Enterprise, SuSE Linux Enterprise Server 10 SP2. Add on JBODs and Dual SCM configurations are not supported. |

5. Hard Disk Drives

The hard drives listed in the following table have been tested with the Intel® Modular Server System MFSYS25 / MFSYS35 by Intel validation labs and/or by individual drive vendors.

The following notation is used in the tested hard drives table below to indicate the support level that Intel provides for a particular hard drive:

| | |
|--------------------|--|
| SD (Similar Drive) | The hard disk drive is supported, but not tested. This hard drive model/capacity has not been tested with this server board, but Intel will support it based on successful testing of a larger capacity hard drive from the same hard drive family. Intel has high confidence that this hard drive will function correctly with the server board. This drive uses the exact same firmware and drivers as a larger capacity hard drive that has been successfully tested with this server board. The only difference between this drive and the one that was used in testing is the storage capacity. Intel provides the same level of support for all hard drives listed in this document, regardless of whether the drive was tested or not. Customers should always test hard drives as part of the final system configuration prior to deployment. Given the fact that a larger capacity hard drive from the same drive family has successfully completed testing on this server board, this particular hard drive capacity point will not be tested. |
| IHVT (IHV Tested) | The hard disk drive was tested according to Intel-approved guidelines and test procedures by the Independent Hardware Vendor (IHV) that manufactured the drive. Intel provides the same level of support for all hard drives listed in this document, regardless of whether the drive was tested in an Intel lab or not. IHV test reports remain the property of the IHV (Intel cannot provide copies of these reports). |

Table 5.1 Tested Hard Drives

| Manufacturer | Product Family | Model Number | RPM | Drive Size (GB) | Drive FW Level (1) | Notes |
|-----------------------|----------------|--------------|--------|-----------------|--------------------|--------------------------------------|
| 2.5" SAS drive | | | | | | |
| Seagate | Constellation* | ST9500430SS | 7,200 | 500G | 0002 | Added June 2009 |
| Seagate | Savvio* 10K.3 | ST9300603SS | 10,000 | 300GB | 0002 | Added March 2009 |
| Seagate | Savvio* 10K.3 | ST9146803SS | 10,000 | 146GB | 0002 | Added April 2009 |
| Seagate | Savvio* 10K.2 | ST9146802SS | 10,000 | 146GB | 0003 | |
| Seagate | Savvio* 10K.2 | ST973402SS | 10,000 | 73GB | 0003 | |
| Seagate | Savvio* 15K | ST936751SS | 15,000 | 36GB | 0001 | |
| Seagate | Savvio* 15K | ST973451SS | 15,000 | 73GB | 0001 | SD |
| Seagate | Savvio* 15K.2 | ST973452SS | 15,000 | 73GB | 0005 | Added June 2009 |
| Seagate | Savvio* 15K.2 | ST9146852SS | 15,000 | 146GB | 0005 | Added June 2009 |
| Fujitsu | AL-10SE* | MBB2147RC | 10,000 | 146GB | 0110 | Chassis must be at UFU P2.6 FW level |
| Fujitsu | AL-10Sx* | MBB2073RC | 10,000 | 73GB | 0110 | Chassis must be at UFU P2.6 FW level |

Intel® Modular Server System MFSYS25, Intel® Modular Server System MFSYS35, Intel® Compute Module MFS5000SI, Intel® Compute Module MFS5520VI

| | | | | | | |
|----------------------------------|--------------------|------------------|--------|-------|-----------|--|
| Fujitsu | AL-10Sx* | MBC2036RC | 15,000 | 36GB | 0005 | Chassis must be at UFU P2.6 FW level |
| Fujitsu | AL-10Sx* | MBC2073RC | 15,000 | 73GB | 0005 | Chassis must be at UFU P2.6 FW level |
| Toshiba | | MBE2073RC | 15,000 | 73GB | 0103 | Chassis must be at UFU P2.6 FW level |
| Toshiba | | MBD2147RC | 10,000 | 147GB | 0102 | Chassis must be at UFU P2.6 FW level |
| Toshiba | | MBD2300RC | 10,000 | 300GB | 0102 | Chassis must be at UFU P2.6 FW level |
| 2.5" SATA drives | | | | | | |
| Toshiba | | MHZ2250BK-G2 | 7200 | 250GB | 011E | Chassis must be at UFU 5.0, Requires AXXTM3SATA.(Note 2) |
| Toshiba | | MHZ2160BK-G2 | 7200 | 160GB | 011E | Chassis must be at UFU 5.0, Requires AXXTM3SATA.(Note 2) |
| SSD (2.5" SATA interface) | | | | | | |
| Intel | X25-E | SSDSA2SH03 2G101 | | 32GB | 045C8 790 | Chassis must be at UFU 5.0, Requires AXXTM3SATA |
| Intel | X25-E | SSDSA2SH06 4G101 | | 64GB | 045C8 790 | Chassis must be at UFU 5.0, Requires AXXTM3SATA |
| Intel | X25-M | SSDSA2M160 G2GN | | 160GB | 02G9 | Chassis must be at UFU 5.5, Requires AXXTM3SATA |
| Intel | X25-M | SSDSA2M080 G2GN | | 80GB | 02G9 | Chassis must be at UFU 5.5, Requires AXXTM3SATA |
| 3.5" SAS drives | | | | | | |
| Seagate | Cheetah* 15K.6 | ST3450856SS | 15,000 | 450GB | 0004 | |
| Seagate | Cheetah* 15K.6 | ST3300656SS | 15,000 | 300GB | 0004 | |
| Seagate | Barracuda ES.2* | ST31000640S S | 7,200 | 1TB | 0003 | Added March 2009 |
| Seagate | Barracuda ES.2* | ST3750630SS | 7,200 | 750GB | 0002 | |
| Fujitsu | MBA Series | MBA3300RC | 15,000 | 300GB | 0103 | Chassis must be at UFU P2.6 FW level |
| 3.5" SATA drives | | | | | | |
| Seagate | Barracuda ES.2* | ST3500320NS | 7,200 | 500GB | SN05 | |
| Hitachi | Ultrastar* A7K1000 | HUA721050KL A330 | 7,200 | 500GB | | |
| WD | RE4-GP | WD2002FYPS 04 | 5,400 | 2TB | 05G05 | |

(1) Firmware revisions listed in this column are the minimum revision levels supported. As they become available, listed drives with newer revisions of firmware are also supported. OEM specific versions of drive firmware are not supported. Mixed drive firmware levels within the same storage pool is not supported.

(2) This drive may experience degradation in performance in environments with elevated temperatures or during a fault condition within the MFSYS25 chassis.

(3) MFSYS35 currently does not support a mix of SAS and SATA drives within the same chassis. All drives within the MFSYS35 subsystem must have the same interface.

(4) MFSYS25 mixed SAS and SSD mix models validated are as follows: Mix combination was limited to one physical SAS drive model and one SSD drive model. Mixing of drive models within a storage pool is not supported.

2 SSD drives – slots 1,2 12 SAS drives - slots 3-14

4 SSD drives – slots 1-4 10 SAS drives - slots 5-14

(5) MFSYS25 mixed SATA and SSD mix models validated are as follows: Mix combination was limited to one physical SATA drive model and one SSD drive model. Mixing of drive models within a storage pool is not supported.

2 SSD drives – slots 1,2 12 SATA drives - slots 3-14

4 SSD drives – slots 1-4 10 SATA drives - slots 5-14

(6) MFSYS25 mixed SAS and SATA mix models validated are as follows: Mix combination was limited to one physical SAS drive model and one SATA drive model. Mixing of drive models within a storage pool is not supported.

2 SAS drives – slots 1,2 12 SATA drives - slots 3-14

4 SAS drives – slots 1-4 10 SATA drives - slots 5-14

6 SAS drives – slots 1-6 8 SATA drives - slots 7-14

8 SAS drives – slots 1-8 6 SATA drives - slots 9-14

6. Installation Guidelines

6.1 Slipstreamed install for Windows 2003 Enterprise Edition (32 & 64 bit)

Method for performing Slipstreamed install for Windows 2003 Installation via CD-ROM drive. Both the CD-ROM and Floppy can not be simultaneously redirected on the MFSYS25 system.

Implication: The MFS500SI compute module will only support remote installation of the Windows 2003 Enterprise Edition R2 SP2 slipstreamed version. Local installation can be performed by either concurrent CD/floppy installation or via slipstreamed installation CD.

For remote install the LSI SAS driver must be slipstreamed into the installation media as both CD-ROM and Floppy can't be simultaneously redirected.

Guideline: To create a merged Windows 2003 CD perform the following:

1. Download and install the freeware program nLite from (<http://www.nliteos.com/index.html>)
2. Launch nLite
3. Select language desired and hit next
4. On the next screen browse to the location of the Windows 2003 CD
5. nLite will prompt for a location to copy the CD to for modification (C:\temp), it'll then copy the install CD to that folder
6. When the copy completes, hit next
7. Hit next on the presets screen
8. On the next screen, select "Integrate -> Drivers" and "Create -> Bootable ISO", hit Next.
9. Download and extract the 1.25.5 driver for the appropriate version of the OS (32-bit or 64-bit) and extract to a known location
10. Hit the Insert tab in the bottom left (single driver), browse to the location with the driver and select the "lsi_sas.inf"
11. Select "Textmode driver", click on the description in the box, and hit OK
12. Hit Next to begin the process
13. When the process completes, hit next to bring up the Bootable ISO screen
14. Select the appropriate options for your system and hit "burn" to create the CD
15. When finished, the CD is ready for remote installation with no requirement for a driver floppy

Status: Intel has no plans to add support for concurrent Remote Floppy and Remote CD/DVD.

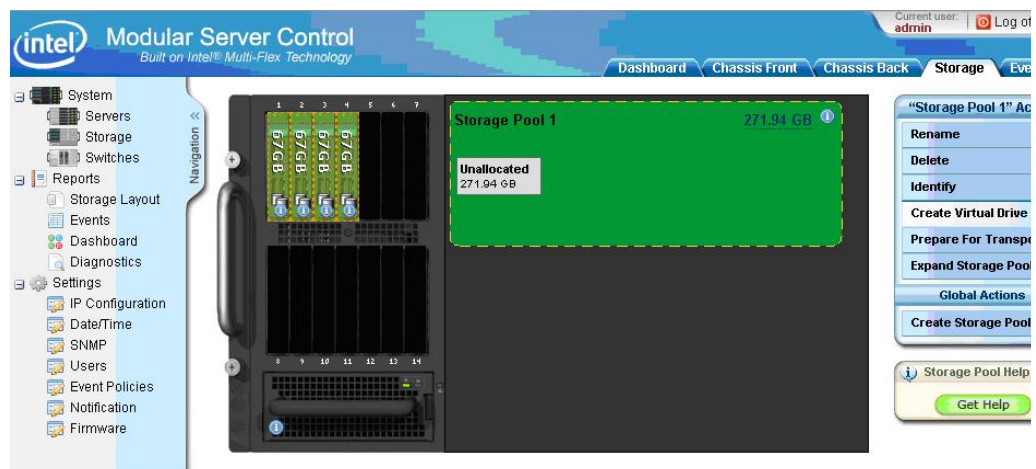
6.2 Windows 2003 Enterprise Edition (32 & 64 bit) Remote

Installation Method

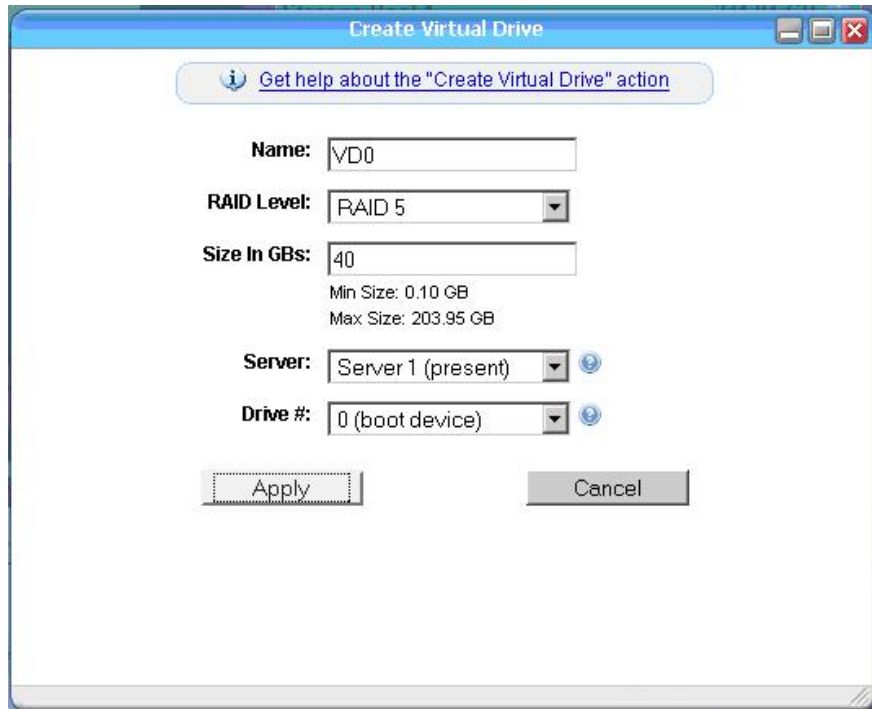
Method for performing Remote Windows 2003 Installation via CD-ROM drive.

Guideline: Note: Prepare a Slipstreamed CD per section 6.1.

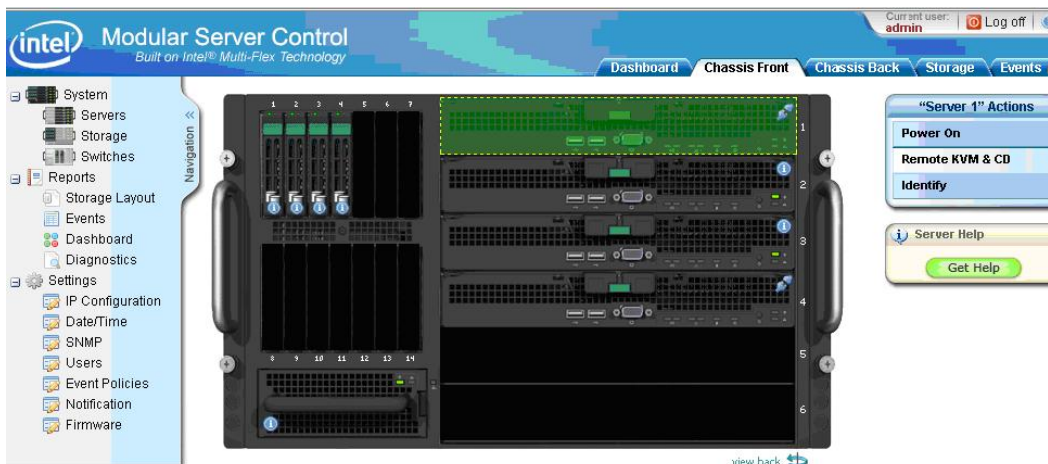
1. Plug your slipstreamed CD of your Windows operating system CD-ROM into the CD on your remote system.
2. Log in to the Modular Server and select the Storage Tab at the top.
3. If you have not already done so create a storage Pool and select it.
4. Select the Create Virtual Drive option under Actions.



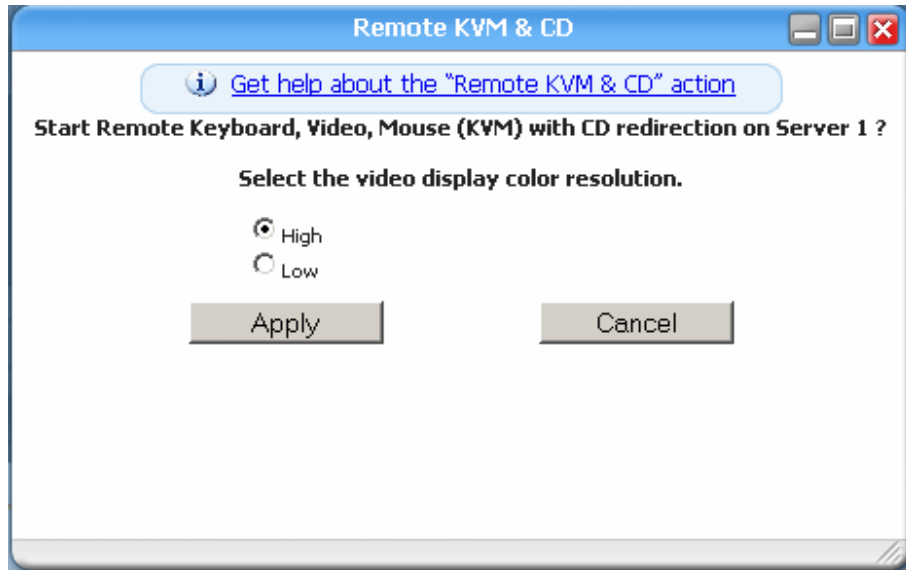
5. Enter a Name for the Virtual Disk.
6. Select a Raid Level appropriate for your application. The Raid levels that are available will be dependant on the number of drives used to create the storage pool.
7. Enter the size in GB for the virtual disk.
8. Select the Server that the virtual disk will be assigned
9. Select the Drive # for the virtual disk. For loading an operating system on a boot drive set the value to **0(boot device)**.



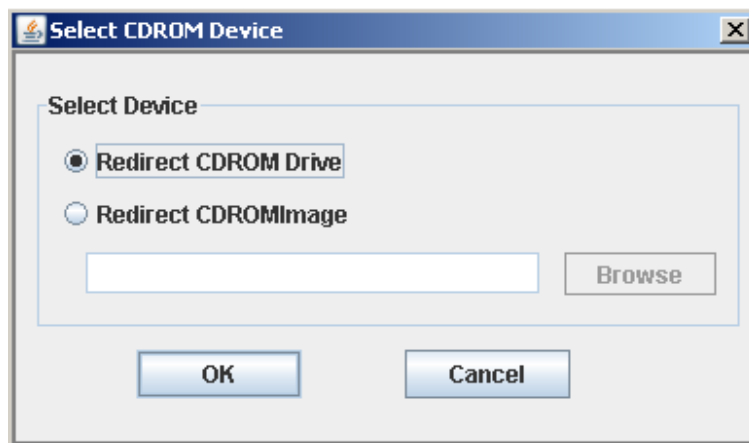
10. Confirm all your settings then Hit Apply. Hit OK when the confirmation dialog is displayed.
11. With the mouse, select the **Chassis Front** Tab.
12. Click on Server 1 on the Chassis picture with the Mouse.
13. Click on the Remote KVM & CD option under Server 1 Actions.



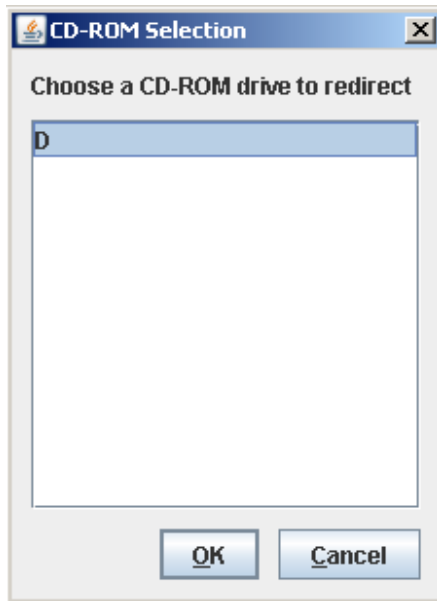
14. Select the video display color resolution.



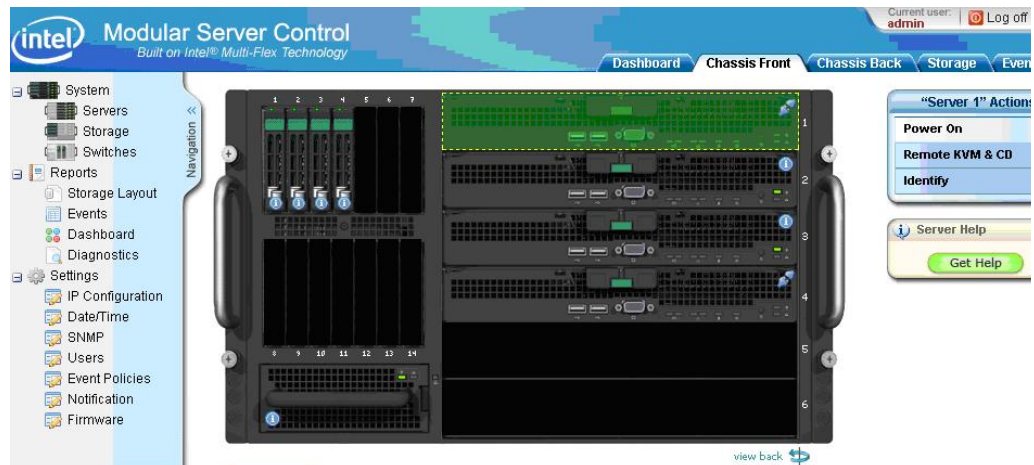
15. Choose the Device Menu Option and then click on the CDROM check box.
16. Choose the Redirect CDROM drive to select the CDROM on your system as the device to load the operating system from.



17. Choose the drive letter of the CDROM to redirect the CD.



18. Return to the Modular Server screen and select the **Chassis Front** TAB. Do not close out the KVM screen.
19. Select Server 1 and then hit the **Power On** option under "Server 1" Actions.



20. Select OK when requested to power on Server 1.
21. Return to the KVM screen and observe the bootup screen.
22. Continue with Windows setup following the directions for the operating installation.

6.3 Red Hat Enterprise Linux 5.0 (32 & 64 bit) Remote Installation

Method

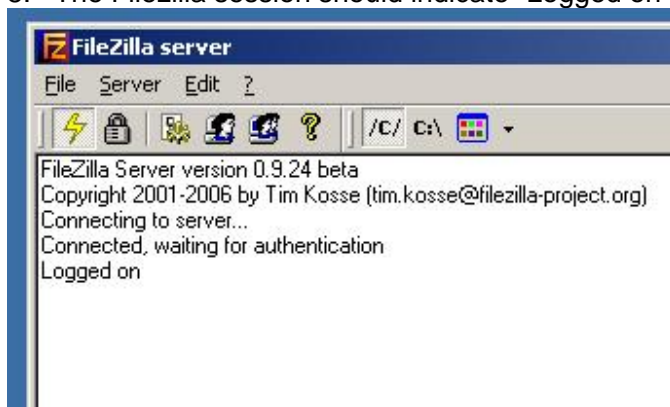
Method for performing Remote Red Hat Enterprise Linux 5.0 Installation with DVD media via FTP

Guideline: Configure the MFSYS25 system as follows:

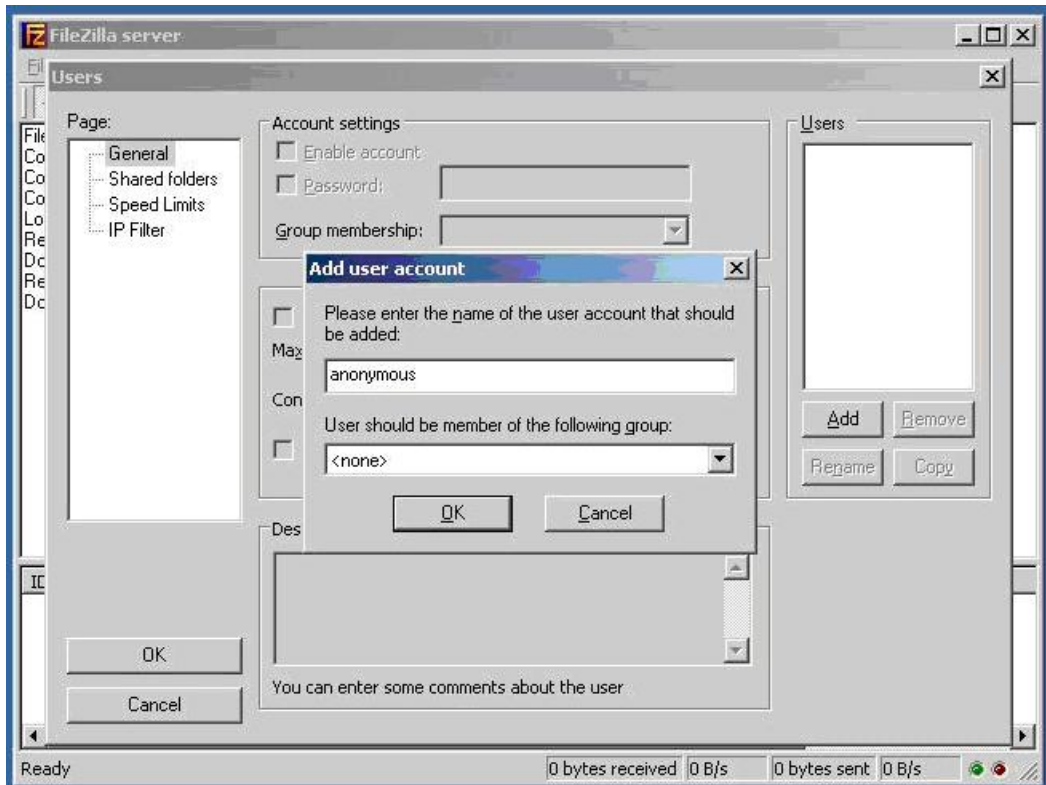
1. Ensure P2.0.5 or later SW stack is loaded
2. Management Module, Ethernet Switch (Ext 1 port and the compute module's ports in default vlan 1 setup) and client (desktop/laptop) in the same network
3. Client requires DVD unit installed direct or via USB port
4. Disable client's Firewall
5. Download and install Filezilla-Server application on the client. Application can be downloaded from <http://www.filezilla-project.org>. Version test: 0-9.24
6. When Filezilla Server is installed onto the client there will be a dialog popup
7. Click OK with the default listing



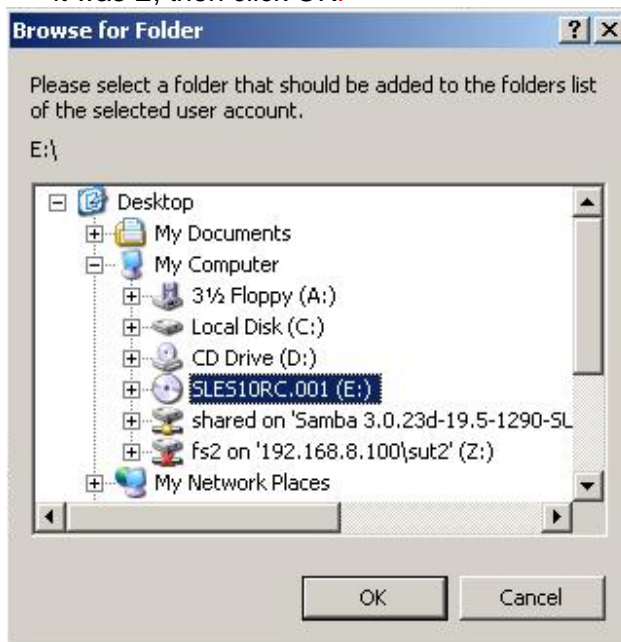
8. The Filezilla session should indicate "Logged on"



9. From Filezilla Server session, Click Edit
10. Select Users - The Users dialog pops up
11. Click "Add". A popup will appear - enter anonymous in the first field (user account). Accept default of <none> for second field then click OK.



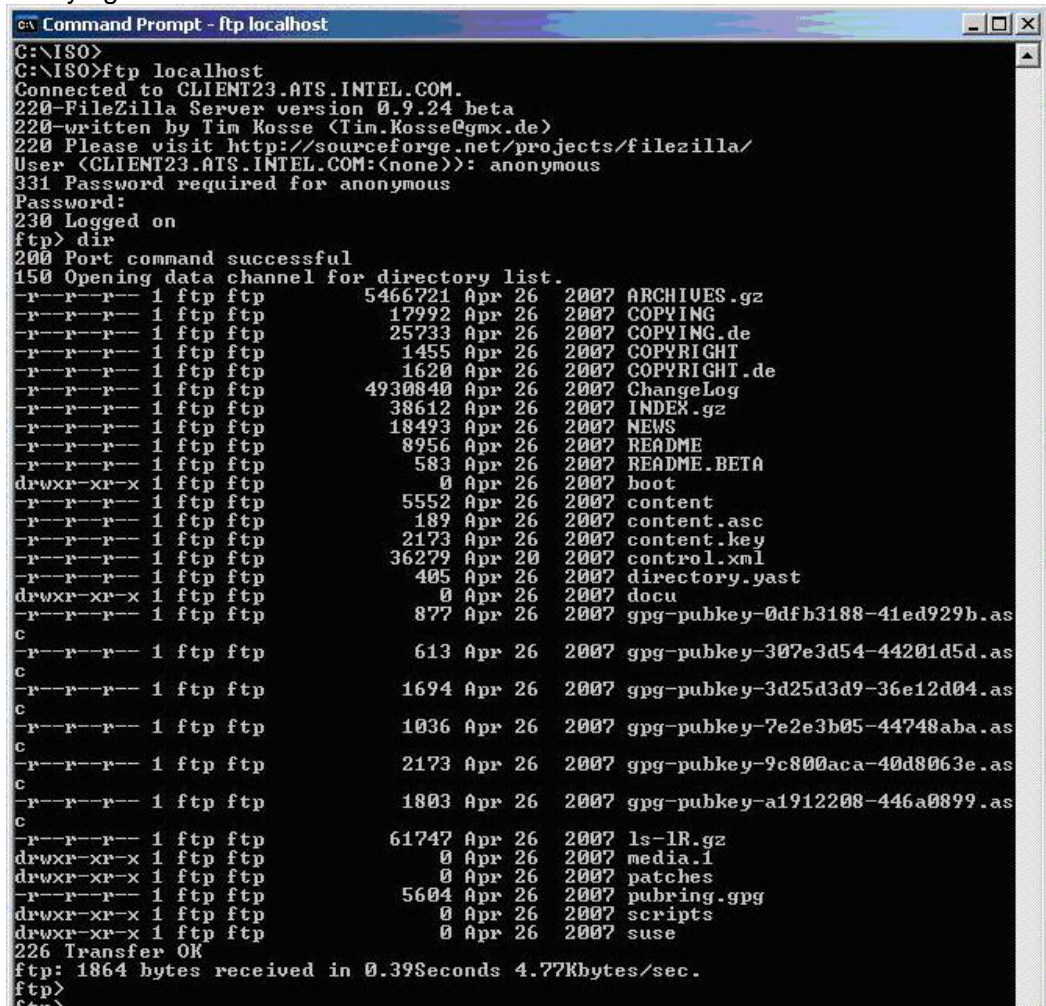
12. From Filezilla server session click "Shared Folders", then click "Add", navigate down and select the client's DVD's unit drive-letter, in the example case below it was E, then click OK.



13. To verify your FTP setup is correct:
Open client's CMD prompt window and type:
C:> ftp localhost

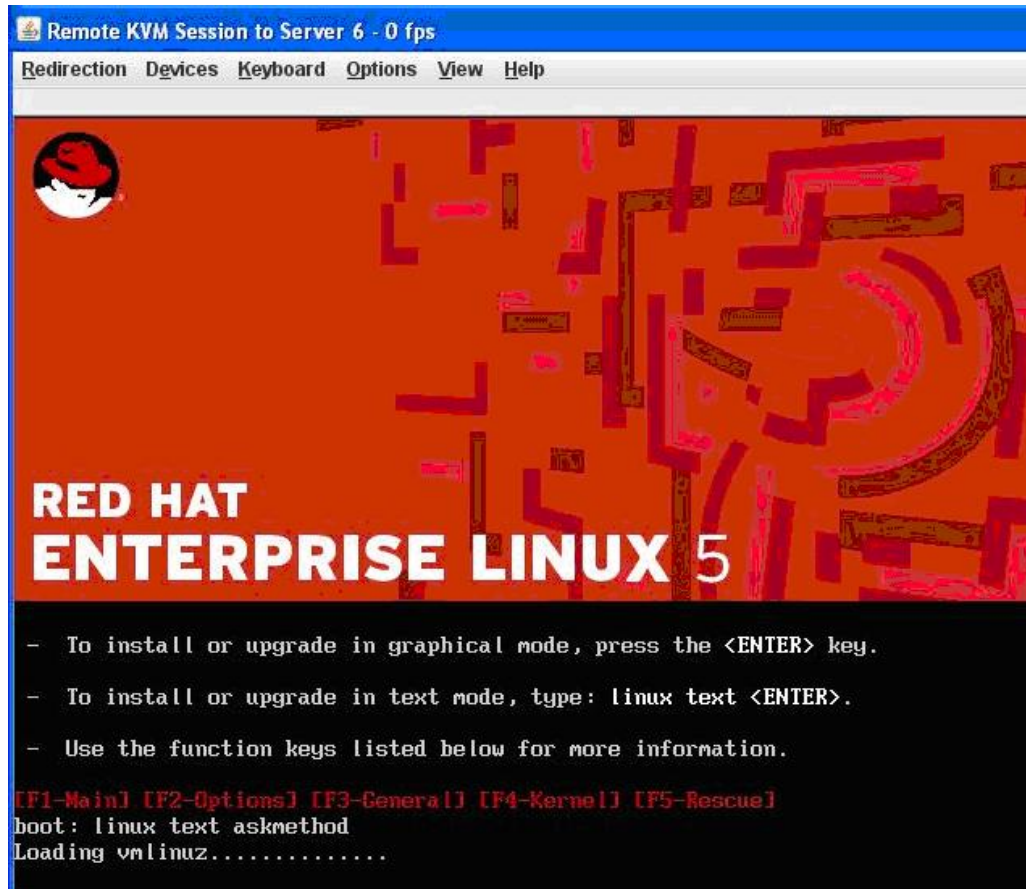
User: anonymous
Password: (just hit enter key)
ftp> dir

14. You should see the whole directory tree of the RHEL-5 DVD media you are trying to install from

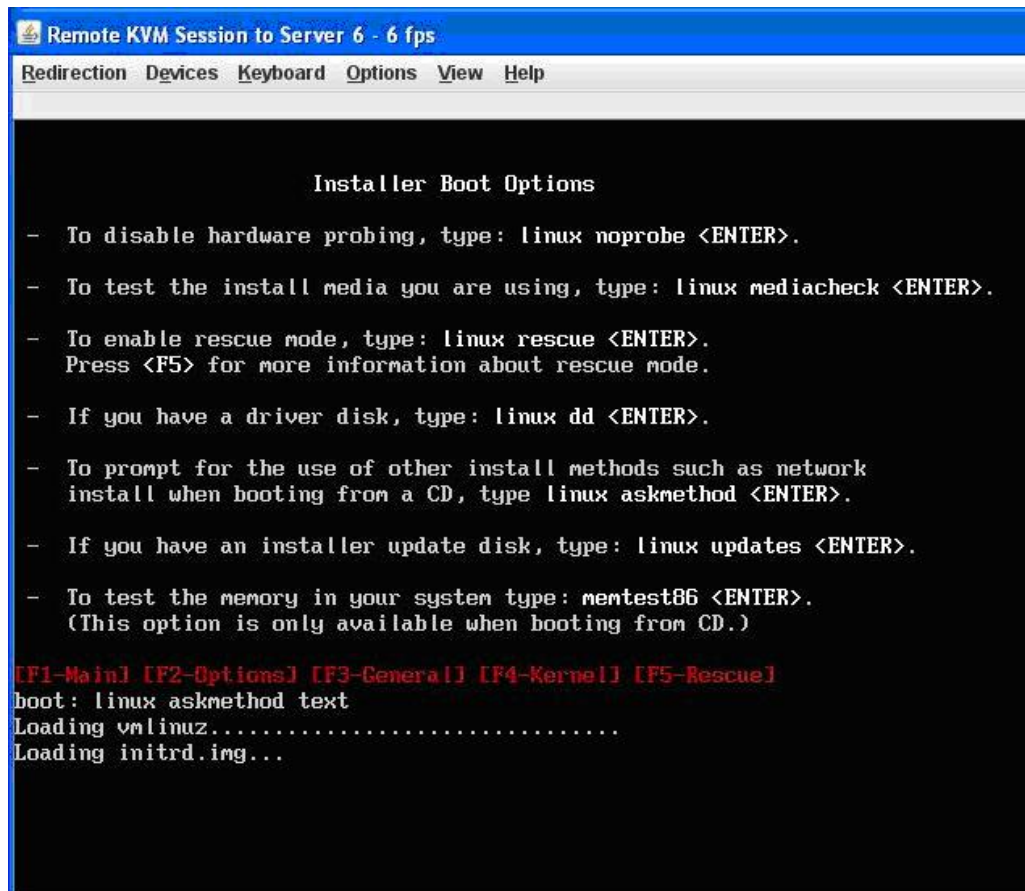


```
Command Prompt - ftp localhost
C:\ISO>
C:\ISO>ftp localhost
Connected to CLIENT23.ATS.INTEL.COM.
220-FileZilla Server version 0.9.24 beta
220-written by Tim Kosse (Tim.Kosse@gmx.de)
220 Please visit http://sourceforge.net/projects/filezilla/
User (CLIENT23.ATS.INTEL.COM:(none)): anonymous
331 Password required for anonymous
Password:
230 Logged on
ftp> dir
200 Port command successful
150 Opening data channel for directory list.
-r--r--r-- 1 ftp ftp      5466721 Apr 26  2007 ARCHIVES.gz
-r--r--r-- 1 ftp ftp      17992 Apr 26  2007 COPYING
-r--r--r-- 1 ftp ftp      25733 Apr 26  2007 COPYING.de
-r--r--r-- 1 ftp ftp      1455 Apr 26  2007 COPYRIGHT
-r--r--r-- 1 ftp ftp      1620 Apr 26  2007 COPYRIGHT.de
-r--r--r-- 1 ftp ftp      4930840 Apr 26  2007 ChangeLog
-r--r--r-- 1 ftp ftp      38612 Apr 26  2007 INDEX.gz
-r--r--r-- 1 ftp ftp      18493 Apr 26  2007 NEWS
-r--r--r-- 1 ftp ftp      8956 Apr 26  2007 README
-r--r--r-- 1 ftp ftp       583 Apr 26  2007 README.BETA
drwxr-xr-x 1 ftp ftp       0 Apr 26  2007 boot
-r--r--r-- 1 ftp ftp      5552 Apr 26  2007 content
-r--r--r-- 1 ftp ftp       189 Apr 26  2007 content.asc
-r--r--r-- 1 ftp ftp      2173 Apr 26  2007 content.key
-r--r--r-- 1 ftp ftp     36279 Apr 20  2007 control.xml
-r--r--r-- 1 ftp ftp       405 Apr 26  2007 directory.yast
drwxr-xr-x 1 ftp ftp       0 Apr 26  2007 docu
-r--r--r-- 1 ftp ftp       877 Apr 26  2007 gpg-pubkey-0dfb3188-41ed929b.as
c
-r--r--r-- 1 ftp ftp       613 Apr 26  2007 gpg-pubkey-307e3d54-44201d5d.as
c
-r--r--r-- 1 ftp ftp      1694 Apr 26  2007 gpg-pubkey-3d25d3d9-36e12d04.as
c
-r--r--r-- 1 ftp ftp      1036 Apr 26  2007 gpg-pubkey-7e2e3b05-44748aba.as
c
-r--r--r-- 1 ftp ftp      2173 Apr 26  2007 gpg-pubkey-9c800aca-40d8063e.as
c
-r--r--r-- 1 ftp ftp      1803 Apr 26  2007 gpg-pubkey-a1912208-446a0899.as
c
-r--r--r-- 1 ftp ftp     61747 Apr 26  2007 ls-lR.gz
drwxr-xr-x 1 ftp ftp       0 Apr 26  2007 media.1
drwxr-xr-x 1 ftp ftp       0 Apr 26  2007 patches
-r--r--r-- 1 ftp ftp     5604 Apr 26  2007 pubring.gpg
drwxr-xr-x 1 ftp ftp       0 Apr 26  2007 scripts
drwxr-xr-x 1 ftp ftp       0 Apr 26  2007 suse
226 Transfer OK
ftp: 1864 bytes received in 0.39Seconds 4.77Kbytes/sec.
ftp>
ftp>
```

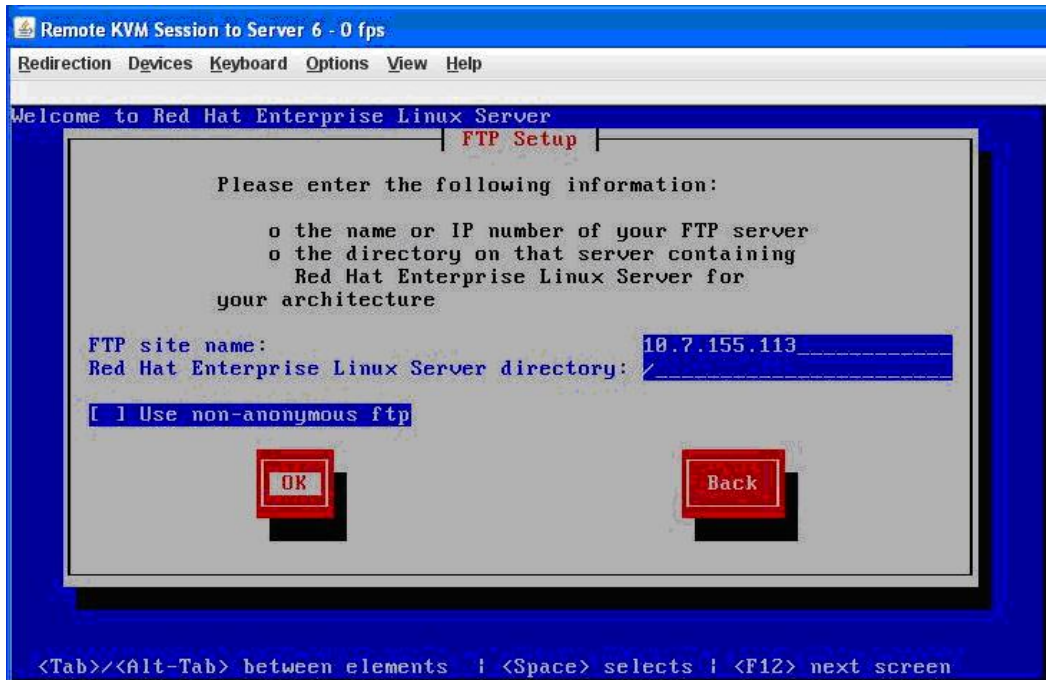
15. The Filezilla FTP server is now setup and ready to use
16. Log in CMM-GUI
17. Create a Storage Pool and Virtual Drive
18. Assign to a compute module as LUN 0
19. Via GUI select the compute module's Remote KVM session and select CD-ROM Redirection and map to the DVD-drive-letter (x) on client
20. Power on the compute module via GUI
21. When presented with Red Hat Boot Option table, hit F2 then type following at the boot prompt:
linux text askmethod



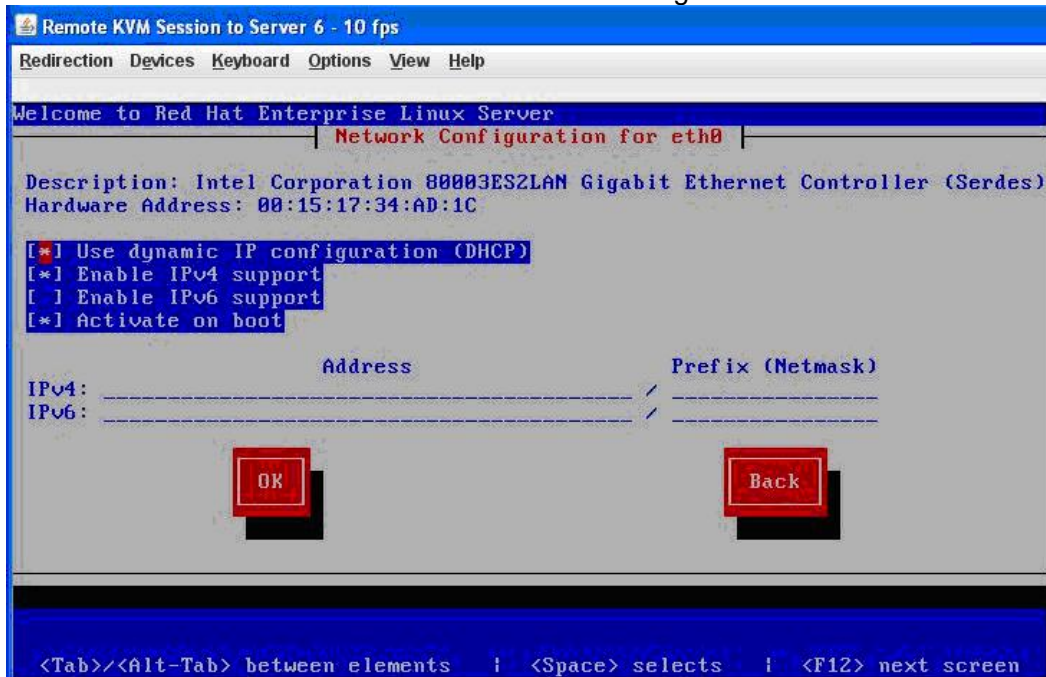
or
hit F2 then type same command there.



22. When asked for Installation Method - Select FTP then click OK
23. When asked for Networking Device - Select (hi-lite) eth0 as your main interface then click OK (Use TAB key to move around)
24. When presented dialog Configure TCP/IP - Select IPv4 and deselect IPv6 and OK
25. On the RedHat's FTP Setup page, enter as:
 - FTP site name: x.x.x.x (your client IP)
 - RH Enterprise Linux Server Directory: /



26. Select DHCP mode when asked for network configuration for Eth0 and Eth1



6.4 SuSE Linux Enterprise Server 10 (32 & 64 bit) Remote

Installation Method

Method for performing SuSE Linux Enterprise Server 10 Installation via SMB

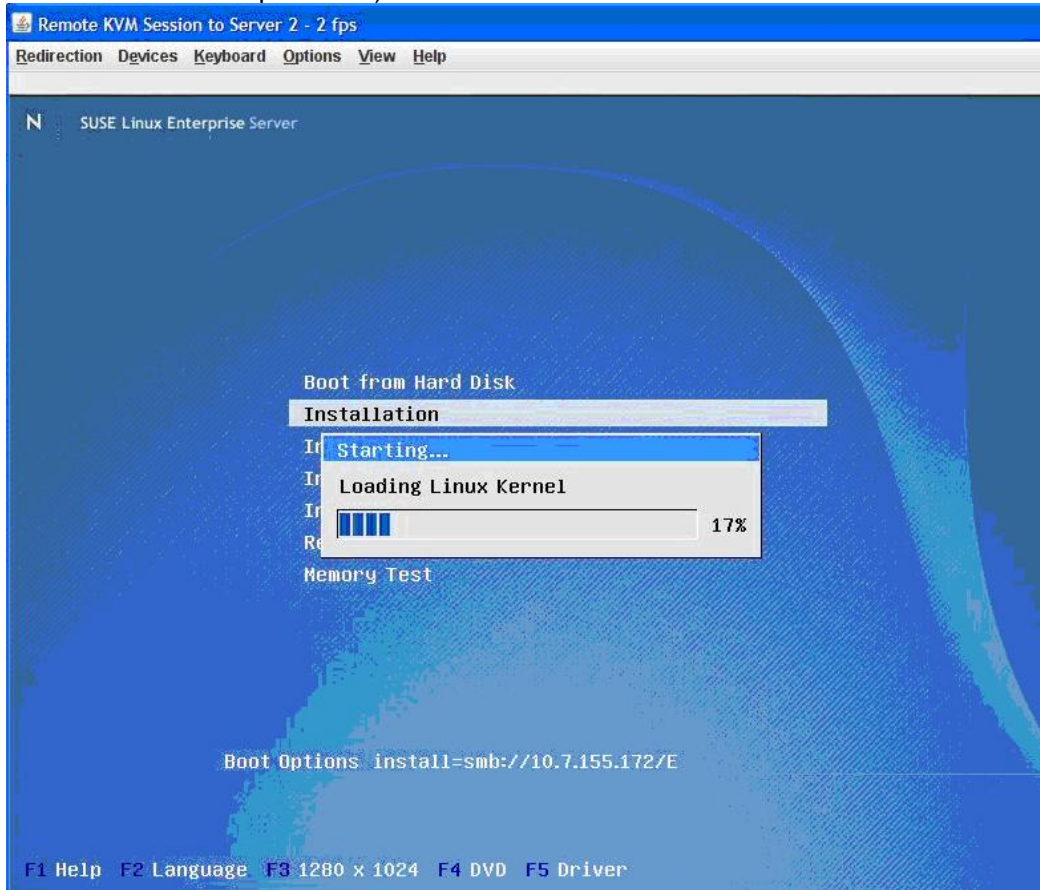
Guideline: Configure the MFSYS25 system as follows:

1. Ensure P2.0.5 or later SW stack is loaded
2. Management Module, Ethernet Switch (1 port and with compute module ports in default vlan 1 setup) and client (desktop/laptop) in same network
3. Client requires DVD unit installed direct or via USB port
4. Disable client's Firewall
5. Share the client's DVD-unit with "all read/write permissions"



6. Log into CMM and via GUI create a Storage Pool and Virtual Drive and assign it to the compute module as LUN 0.
7. Via GUI select the compute module's Remote KVM session and select CD-ROM Redirection and map to the DVD-drive-letter (E) on client

8. Select Video color resolution = High
9. Power on the compute module via the GUI
10. When server boots to the option table, use down-arrow key to select second option from the given list "Installation" then type (Boot Options line):
install=smb://x.x.x.x/drive-letter
where:
 x.x.x.x : your client's IP
 drive-letter : the client's DVD unit drive letter assigned by OS (in example it is E)



11. The installation process will result in a reboot in about 25 minutes
12. The whole SLES installation will finish in about 45 minutes