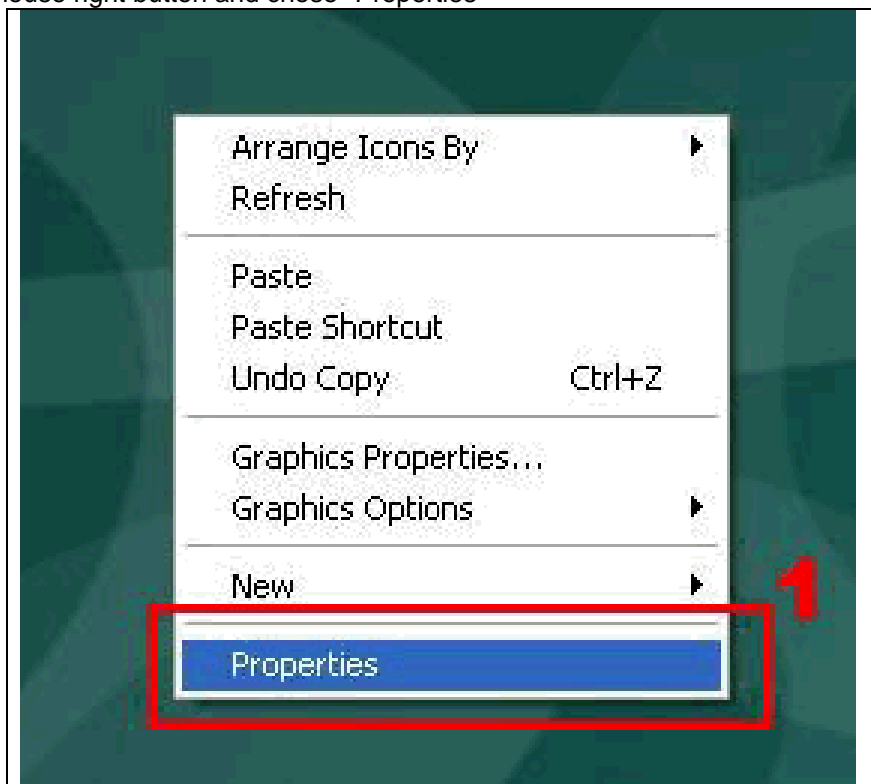




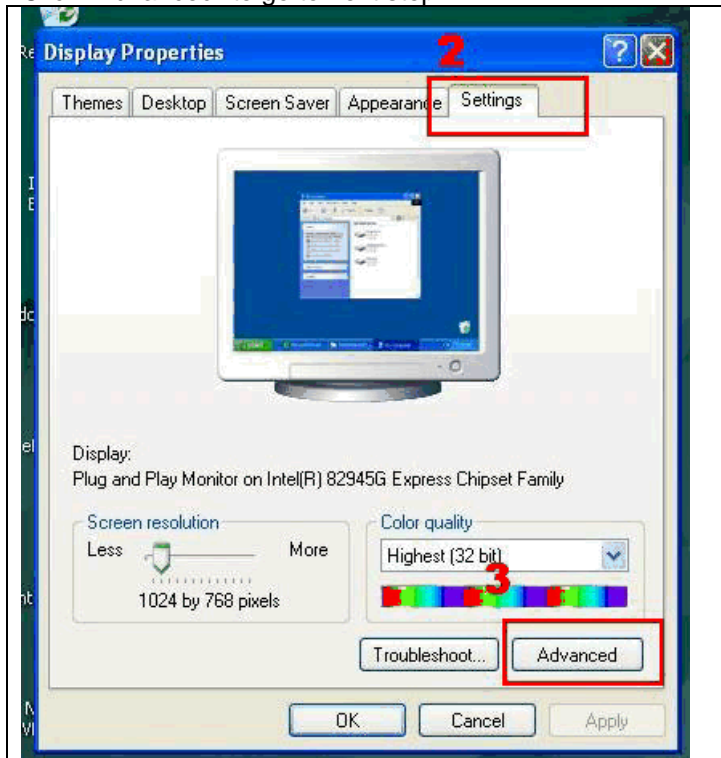
Installation Instructions for the Acer Monitor Drivers that are not Digitally Signed

In the event that the driver you have downloaded from the Acer web site is not digitally signed, please follow the steps below. Note: these instructions are for the AL2032 driver and will be similar for any non-digitally signed driver.

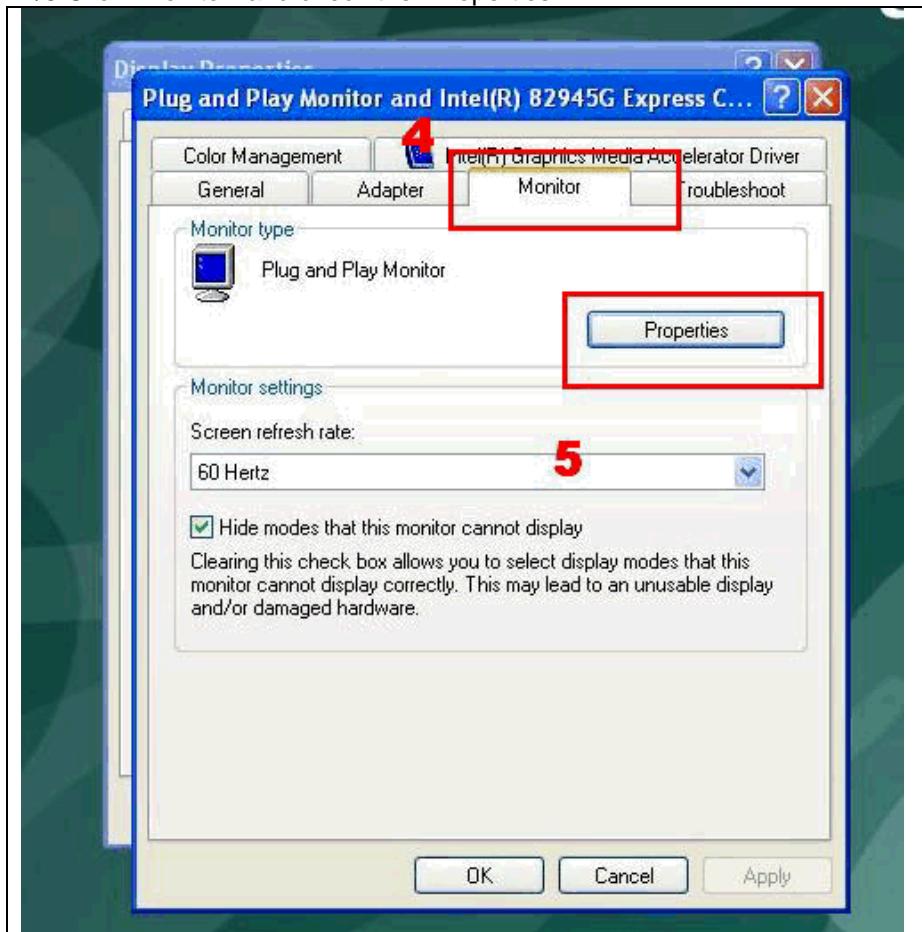
1. Click mouse right button and chose "Properties"



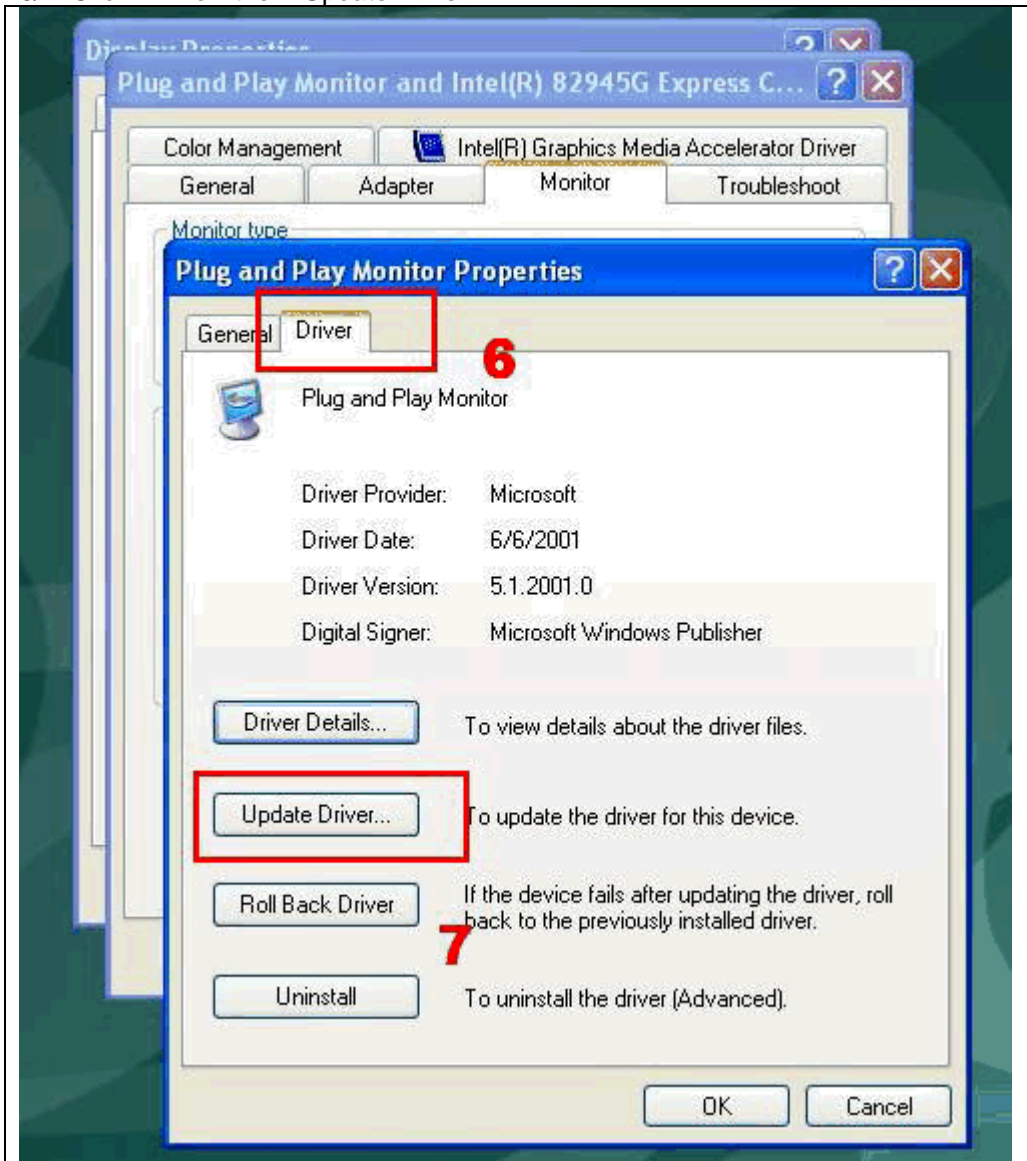
2/3. In Display Properties, choose Settings first - you can see the monitor is detected as a Plug and Play Monitor. Click "Advanced" to go to next step.



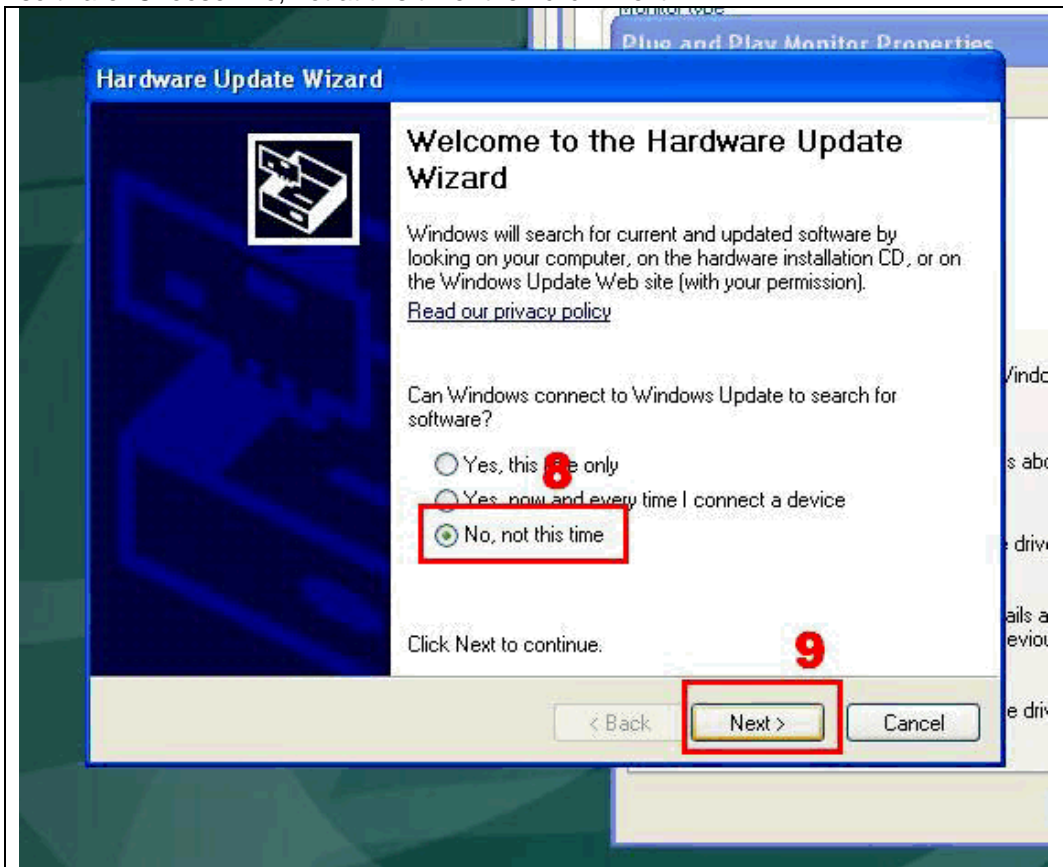
4/5. Click "Monitor" and check the "Properties"



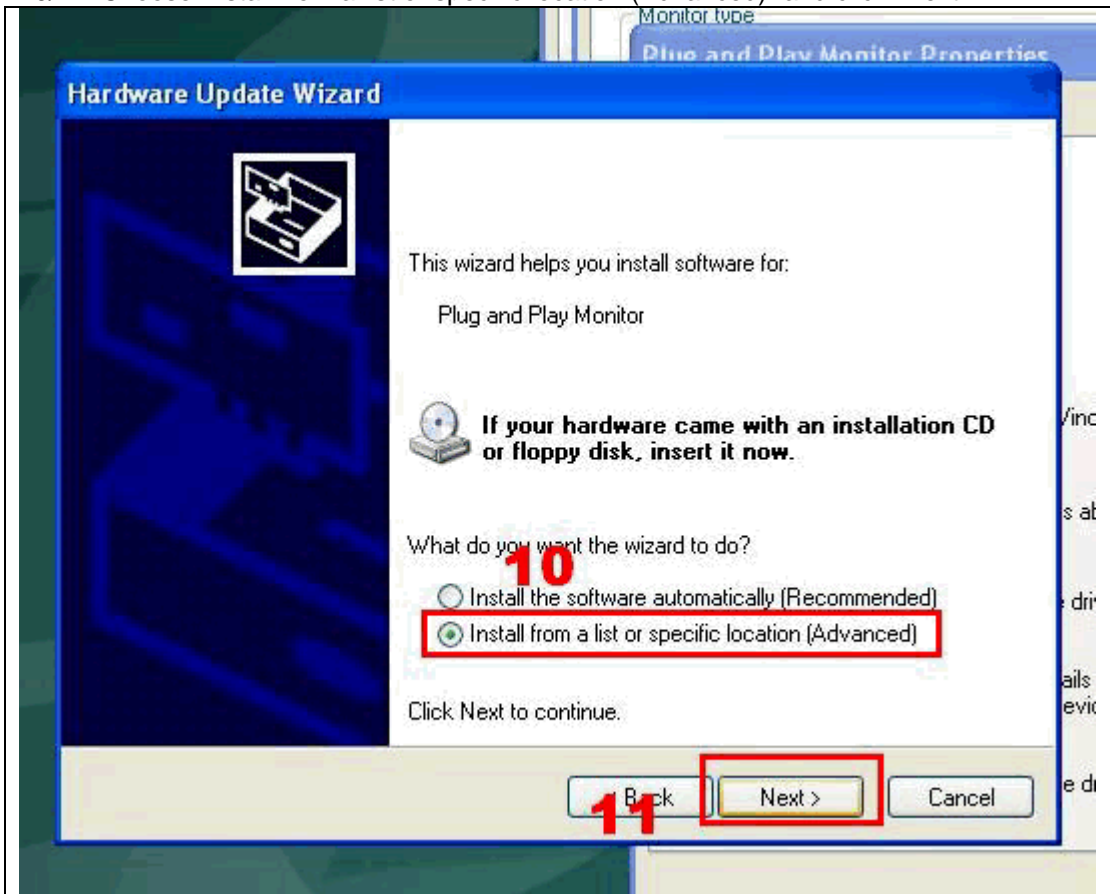
6/7. Click "Driver" then "Update Driver..."



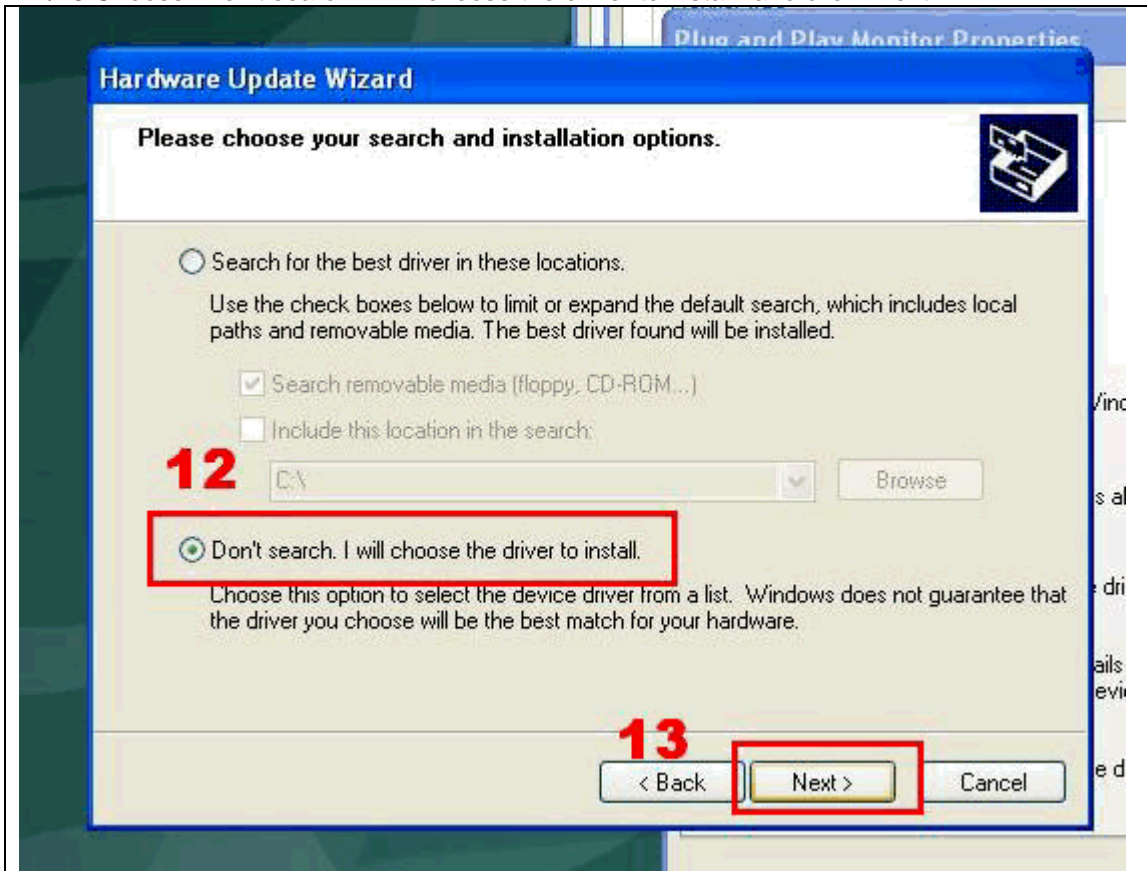
8/9. Hardware Update Wizard will pop up and ask you if windows can connect to Windows Update to search for software. Choose "No, not at this time" then click "Next>"



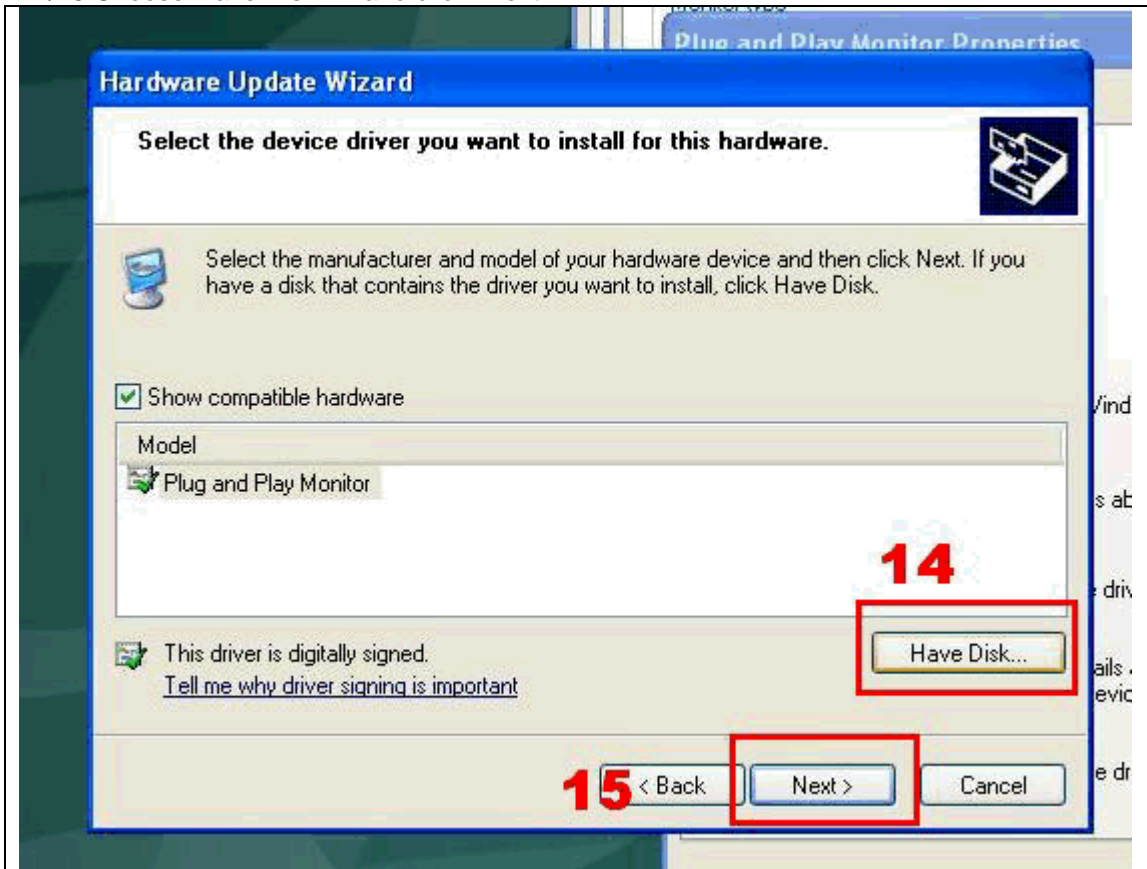
10/11. Choose "Install from a list or specific location (Advanced)" and click "Next>"



12/13. Choose "Don't search. I will choose the driver to install" and click "Next>".



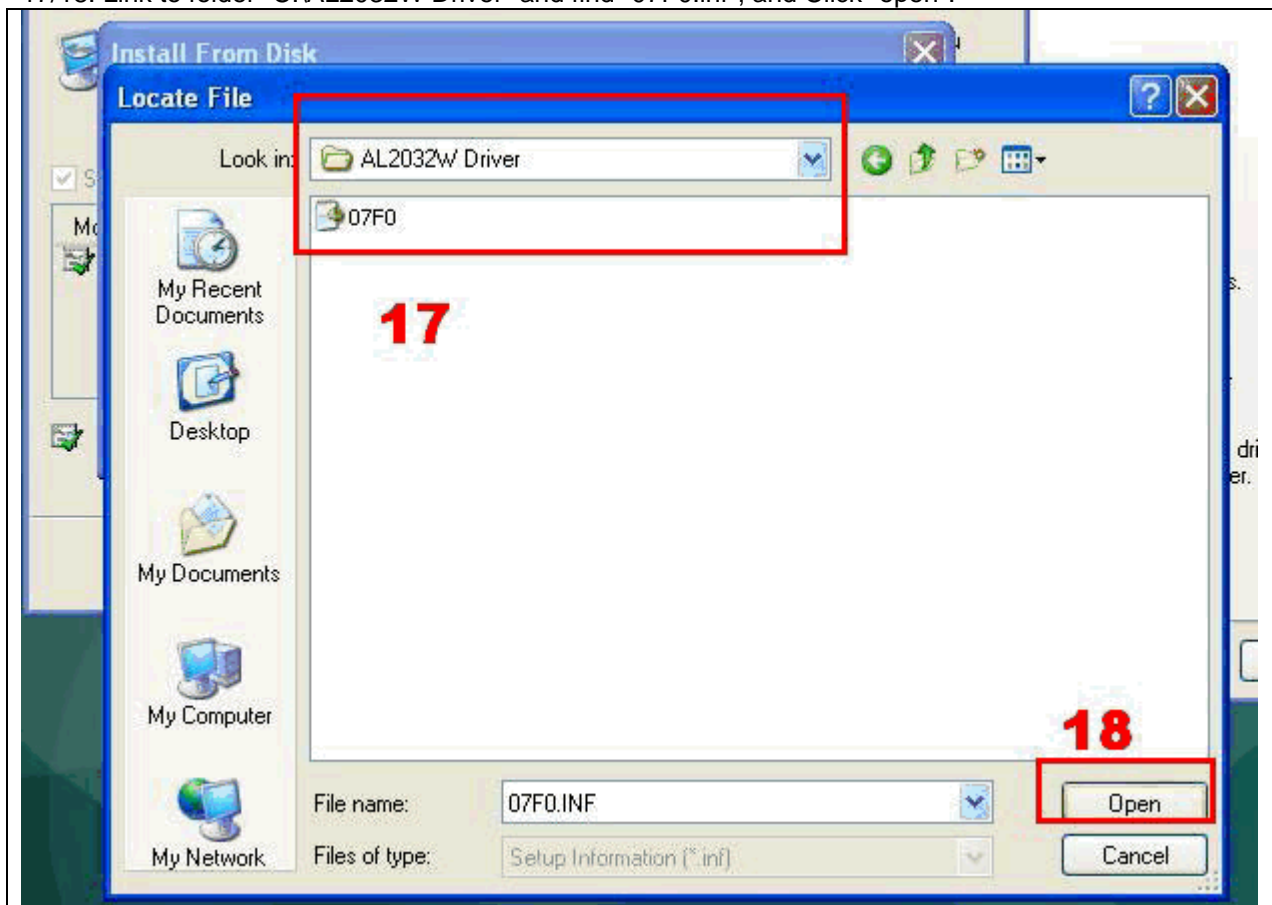
14/15. Choose "Have Disk...." and click "Next>".



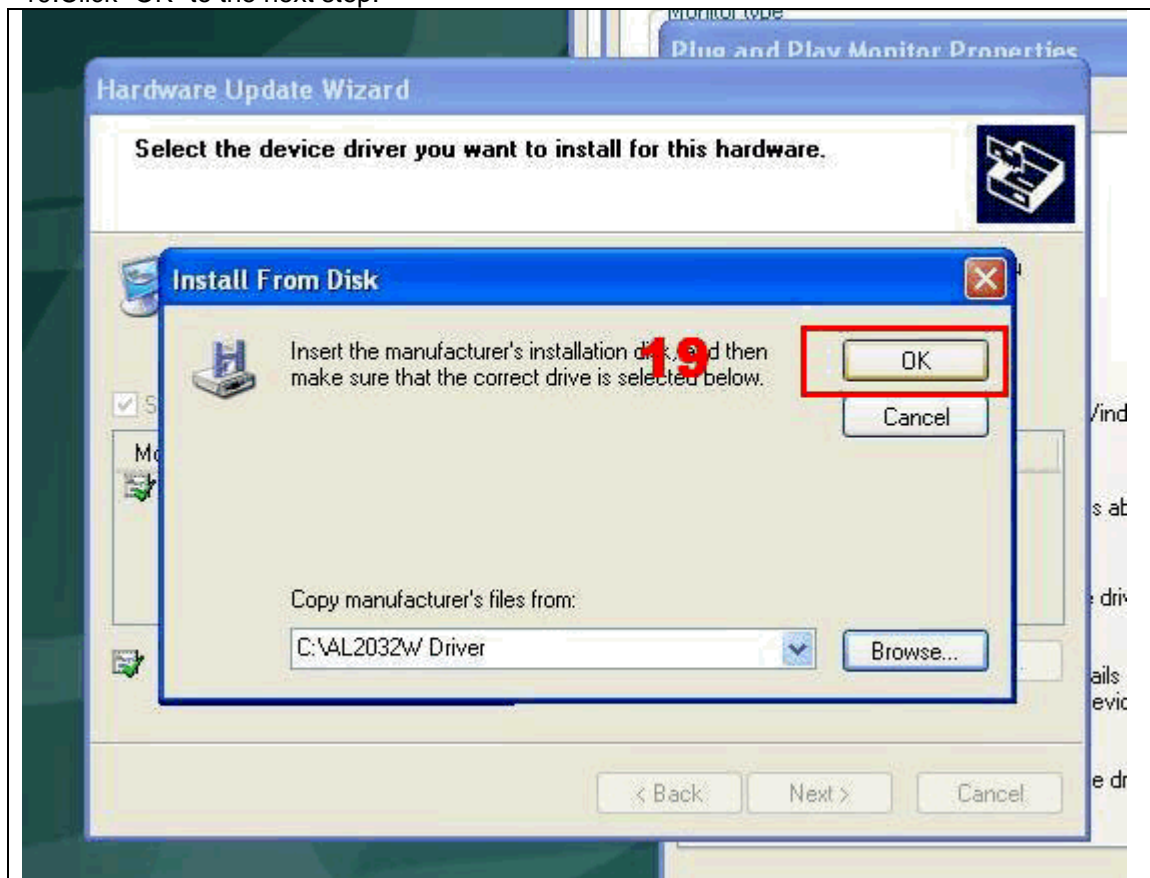
16. Click "Browse..." to locate the files.



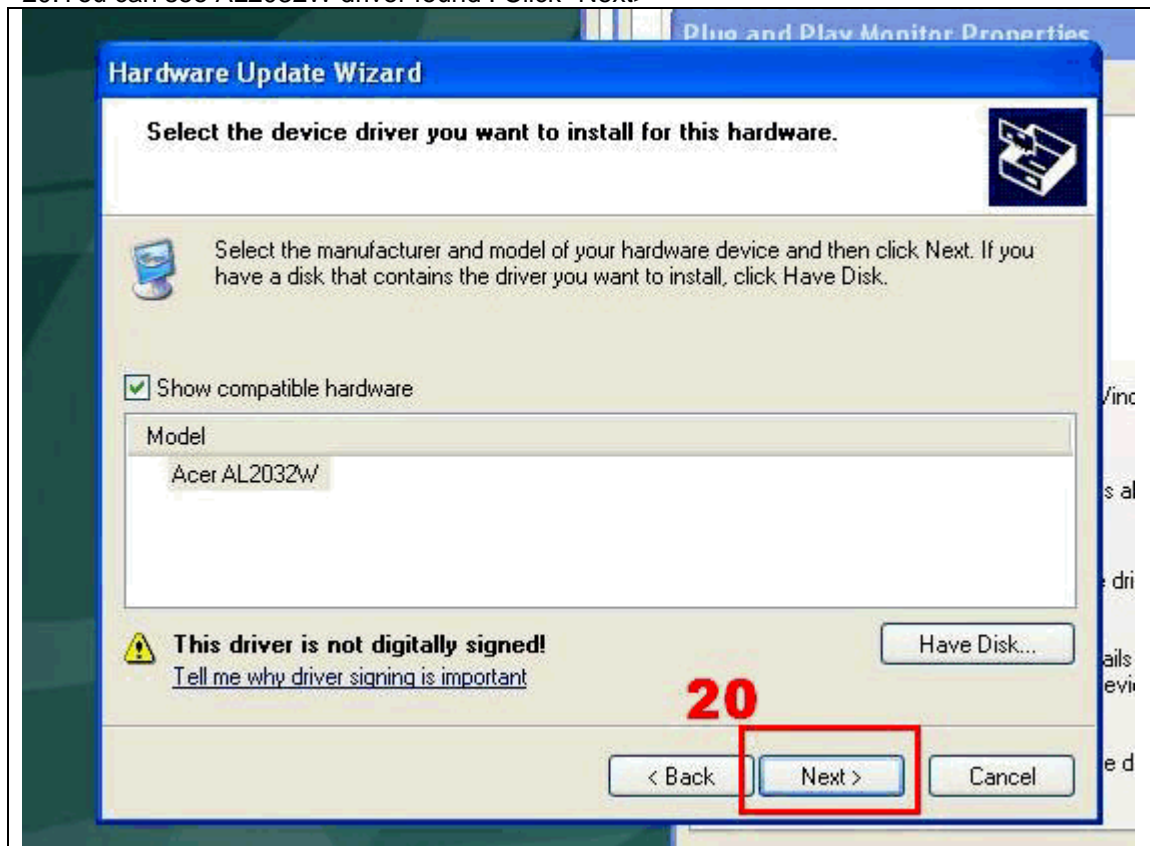
17/18. Link to folder "C:\AL2032W Driver" and find "07F0.inf", and Click "open".



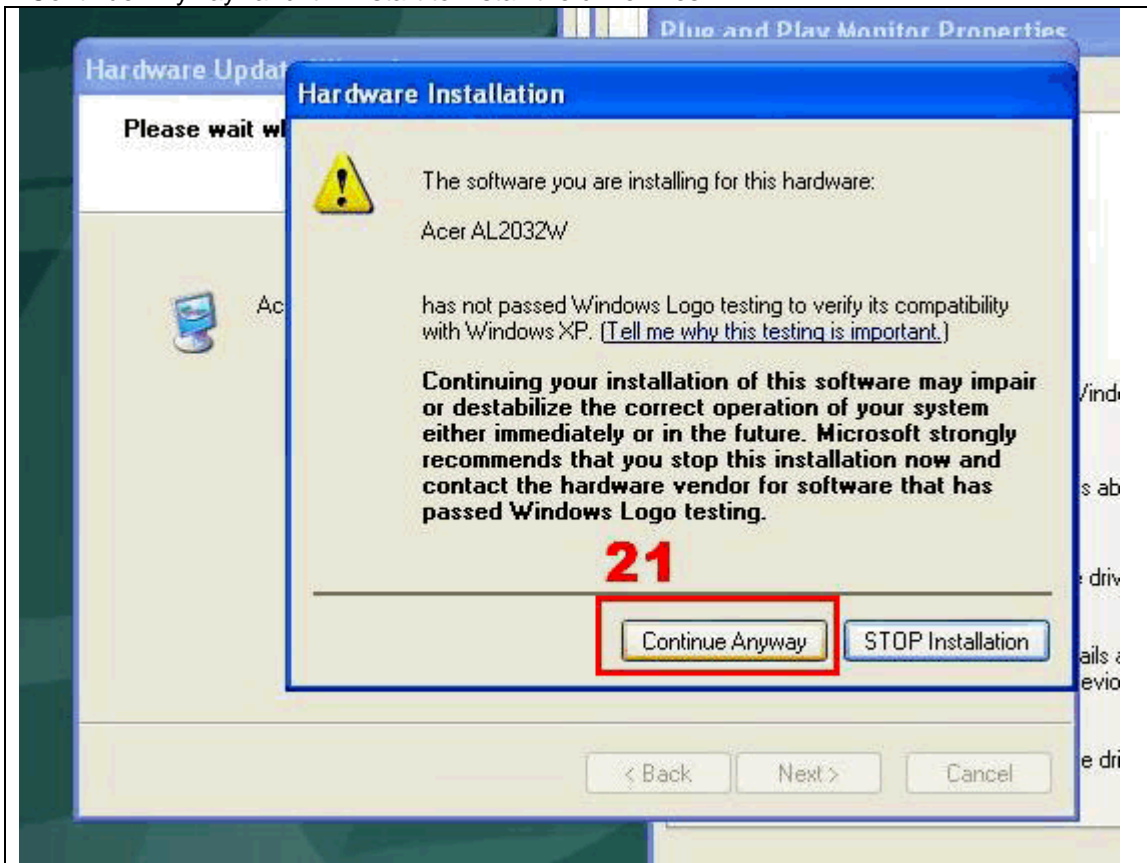
19. Click "OK" to the next step.



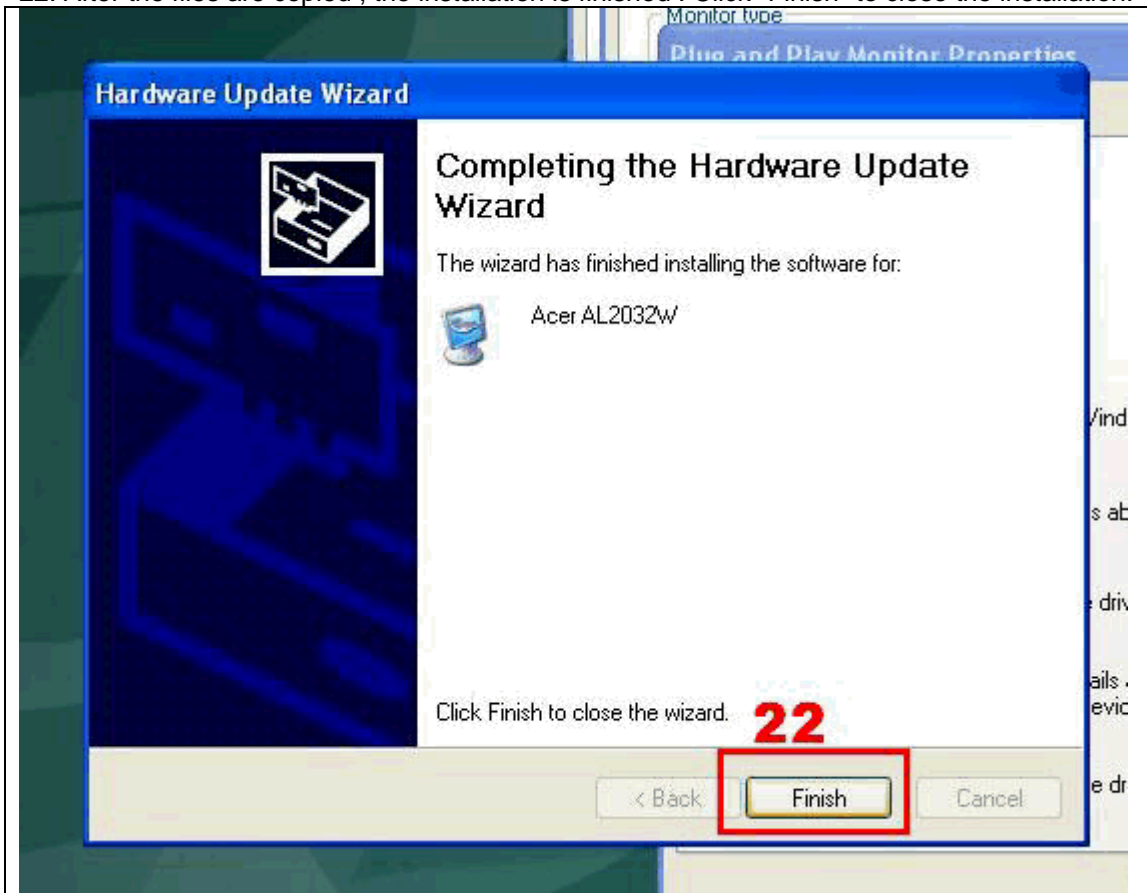
20. You can see AL2032W driver found . Click "Next>"



21. During the installation, the system will warn you that this driver has not passed Windows Logo testing. Click "Continue Anyway" and it will start to install the driver files.



22. After the files are copied, the installation is finished. Click "Finish" to close the installation.



23. In Display Properties , you can see AL2032W is installed and 1680x1050 resolution is selected.

