



# Mini Memory Card Reader/Writer

## **DX-CRMN1**

**USER GUIDE**

# Dynex Mini Memory Card Reader/Writer DX-CRMN1

## Contents

Introduction .....	2
Important safety instructions .....	3
Card reader components .....	4
Connecting the card reader .....	5
Using your card reader .....	6
Troubleshooting .....	13
Specifications .....	15
Legal notices .....	16
One-year limited warranty .....	17

## Introduction

Your card reader accepts standard Secure Digital (SD), Secure Digital High Capacity (SDHC), and Multi Media (MMC) flash memory cards, as well as small form-factor cards including miniSD, microSD, RS-MMC, and Memory Stick Micro (M2) cards. It can be connected to any external USB port and is ideal for mobile phone users.

## **Features**

Your card reader features:

- A small form factor
- USB-powered operation (an external power adapter is not needed)
- Compliance with the USB (Universal Serial Bus) 2.0 specification
- Compliance with the USB mass storage device class specification
- Hot-swappable, Plug & Play capability
- Support for media card icons for easy drive recognition

## **Important safety instructions**

Before getting started, read these instructions and save them for later reference.

- Before you plug your card reader into your computer, read this user guide. In some operating systems, the driver must be installed before you install your card reader.
- Do not drop or hit your card reader.
- Do not install your card reader in a location that is subject to strong vibrations.
- Do not disassemble or try to modify your card reader. Disassembly or modification may void your warranty and could damage your card reader leading to a fire or electric shock.
- Do not store your card reader in a damp location. Do not allow moisture or liquids to drip into your card reader. Liquids can damage your card reader leading to a fire or electric shock.

- Do not insert metal objects, such as coins or paper clips, into your card reader.
- Do not remove a card when the LED indicator shows data activity is in progress. You may damage the card or lose data stored on the card.
- Your card reader is for general computer use. Do not use your card reader in a computer that requires exceptional reliability, especially if a breakdown or malfunction of your card read might jeopardize life or health, such as aerospace equipment, atomic power control systems, traffic-related equipment, transportation equipment, industrial robotics, combustion equipment, safety devices, and life-support systems.

## Card reader components

### Package contents

Make sure that you received:

- Mini memory card reader (1)
- Mini-USB 5-pin cable (1)
- Utility and Documentation CD (1)
- *Quick Setup Guide* (1)

## Minimum system requirements

- Computer with one available external USB port
- Pentium 133 MHz or higher processor
- CD drive
- 2 MB of hard drive space
- Windows® 2000, Windows® XP, Windows® Vista™, Windows 7®, or Mac OS 10.x or higher.

## Connecting the card reader

To connect your card reader, plug the small end of the included USB cable into your card reader and the other end into an available external USB port.

If your computer uses Windows 2000, Windows XP, Windows Vista, Windows 7, or Mac OS 10.x, your computer automatically installs the correct driver, and two new drive icons appear in the *My Computer* and *Windows Explorer* windows (Windows operating systems). If you want to customize the card reader drive icons, see “Customizing drive icons (Windows 2000, Windows XP, Windows Vista, and Windows 7 only)” on page 9.

## Using your card reader

### To access a media card using Windows:

- 1 Insert a card into the appropriate slot, as shown in “Card slots and LED” on page 7.

**Caution:** Cards must be inserted into the correct slot and in the correct direction; otherwise, you may damage the card or the slot.

- 2 Open the *My Computer* or *Windows Explorer* window, then double-click the drive icon for the slot you are using.
- 3 To access files and folders on the inserted card, use normal Windows procedures for opening, copying, pasting, or deleting files and folders.
- 4 When you have finished working with the files on a memory card, right-click the memory card icon and click **Eject**. The light on the memory card reader turns off after the card is removed.

**Caution:** Do not insert or remove memory cards while the light on the reader is flashing. Doing so may cause damage to your card or loss of data.

**To access a media card using Macintosh:**

- 1 Insert a card into the appropriate slot, as shown in “Card slots and LED” on page 7. A new disk icon will appear on the desktop.

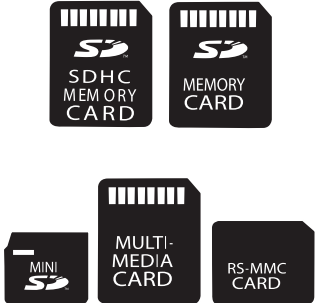
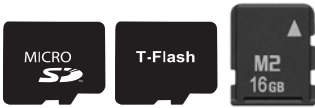
**Caution:** Cards must be inserted into the correct slot and in the correct direction; otherwise, you may damage the card or the slot.

- 2 When you have finished working with the files on a memory card, drag the disk icon to **Trash** or click the disk icon and select **Put Away** from the *File* menu.

**Caution:** Do not insert or remove memory cards while the light on the reader is flashing. Doing so may cause damage to your card or loss of data.

## Card slots and LED

Feature	Description
LED	Indicates when the reader is reading from or writing to a card. <b>LED off</b> —Your card reader is not being used. <b>Power LED on (green)</b> —Your card reader is turned on. <b>Data LED on (green)</b> —A card is inserted in the slot. <b>LED flashing</b> —Data is being transferred to or from a memory card and the computer.

Feature	Description
<p data-bbox="68 256 467 285">SD/SDHC/mini SD/MMC/RS-MMC slot</p>  <p>The illustrations show five types of memory cards: a standard SDHC Memory Card, a standard SD Memory Card, a Mini SD card, a Multi-Media Card, and an RS-MMC Card. Each card is shown in a dark grey color with white text and the SD logo.</p>	<p data-bbox="505 256 904 387">Insert Secure Digital High Capacity (SDHC), Secure Digital (SD), Mini SD, Multi Media (MMC), or RS-MMC cards into this slot.</p>
<p data-bbox="68 722 329 751">microSD/T-Flash/M2 slot</p>  <p>The illustrations show three types of memory cards: a MicroSD card, a T-Flash card, and an M2 16GB card. The MicroSD and T-Flash cards are dark grey with white text and the SD logo. The M2 card is dark grey with white text and a gold contact area on the top edge.</p>	<p data-bbox="505 722 904 824">Insert microSD, Transflash (T-Flash), or Memory Stick micro (M2) cards into this slot. No adapter is required.</p> <p data-bbox="505 860 904 991"><b>Note:</b> The microSD or M2 card's gold contact area must be facing up and the card must be inserted in the smaller slot.</p>



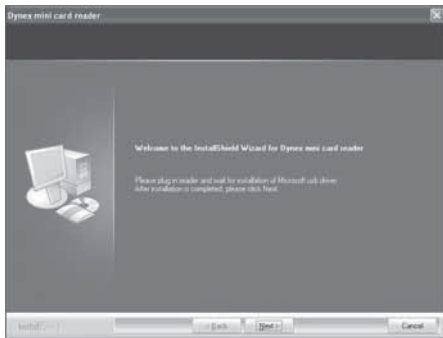
## Customizing drive icons (Windows 2000, Windows XP, Windows Vista, and Windows 7 only)

To make the media card slots easier to recognize, you can customize the drive icons.

- 1 Save all files and close all programs.
- 2 Insert the included Utility CD into your CD drive.



- 3 The Dynex mini card reader window opens. Click **Next**, then follow the on-screen instructions to install the driver.



- 4 After the driver installation is complete, restart your computer. Windows displays new drive icons for each of the slots instead of the standard Windows drive icons.



- 5 When Windows detects a card in a slot, the corresponding drive icon turns from grey to a color, indicating that the card is recognized.

## Uninstalling software

### To uninstall software in Windows Vista or Windows 7:

- 1 Click **Start**, then click **Control Panel**.
- 2 Click **Uninstall a Program**.
- 3 Locate the software in the list, then click **Uninstall**.
- 4 Follow the on-screen instructions to uninstall the software.

### To uninstall software in Windows XP or Windows 2000:

- 1 Click **Start**, then click **Control Panel**.
- 2 Click **Add or Remove Programs**.
- 3 Locate the software in the list, then click **Remove**.
- 4 Follow the on-screen instructions to uninstall the software.

## Formatting a memory card (Windows 2000, Windows XP, Windows Vista, and Windows 7)

If your computer has trouble recognizing a new memory card, format the memory card in your camera or by using the computer.

### To format a memory card:

- 1 Click **Start**, and then click **My Computer**.
- 2 Under **Removable Storage**, right-click the appropriate memory card icon.
- 3 Select **Format**.
- 4 Type in a name into the **Volume Label** box. The name of your memory card appears next to the icon.
- 5 Click **Start**, then click **OK** in the *Warning* dialog box.

- 6 Click **OK** on the *Format Complete* window.
- 7 Click **Close** to finish.

**Caution:** *Formatting a memory card will permanently delete all files on the card. Be sure that you copy any valued files to a computer before formatting a memory card. Do not disconnect the card reader or remove the memory card while formatting is in progress.*

## Formatting a memory card (Macintosh)

If your computer has trouble recognizing a new memory card, format the memory card in your camera or by using the computer.

### To format a memory card:

- 1 Click **Go**, then click **Utilities**.
- 2 Launch **Disk Utility**.
- 3 In the left-hand column, select the memory card you want to format, then click the **Erase** tab.
- 4 Specify a volume format and name for the memory card, then click **Erase**. A warning box opens.
- 5 Click **Erase** again. The Erase process takes a minute or so to erase and reformat your memory card.

**Caution:** *Formatting a memory card will permanently delete all files on the card. Be sure that you copy any valued files to a computer before formatting a memory card. Do not disconnect the card reader or remove the memory card while formatting is in progress.*

## Troubleshooting

If memory cards do not appear in My Computer or Windows Explorer (Windows operating systems) or on the desktop (Mac operating systems), check the following:

- Make sure the card reader is fully connected to your card reader. Unplug and reconnect your card reader.
- Try a different memory card of the same type in the same slot. If a different memory card works, the original memory card should be replaced.
- Disconnect the cable from your card reader and shine a flashlight into the empty card slots. Look to see if any pin inside is bent, and straighten bent pins with the tip of a mechanical pencil. Replace your memory card reader if a pin has bent so much that it touches another pin.

If memory cards appear in My Computer (Windows operating systems) or on the desktop (Mac operating systems) but errors occur when writing or reading, check the following:

- Make sure that the memory card is fully inserted into the slot.
- Try a different memory card of the same type in the same slot. If the different memory card works, the original memory card should be replaced.
- Some cards have a read/write security switch. Make sure that the security switch is set to Write Enabled.
- Make sure that the amount of data you attempted to store has not exceeded the capacity of the card.
- Inspect the ends of the memory cards for dirt or material closing a hole. Clean the contacts with a lint-free cloth and small amounts of isopropyl alcohol.
- If errors persist, replace the memory card.

If no icon appears when a card is inserted into the reader (MAC OS X), check the following:

- The card may have been formatted in Windows FAT 32 format. Using a PC or digital device, reformat the card using OS X-compatible FAT or FAT16 format.

If you get an error message when installing the card reader software, check the following:

- Make sure that your card reader is connected to your computer.
- Make sure that only one card reader is connected to your computer. If other card readers are connected, unplug them before installing the software.

## Specifications

Chipset	ITE
Supported file formats	FAT 12/16/32, NTFS
Two memory slots	Top slot: SD/SDHC/mini SD/MMC/RS-MMC Bottom slot: microSD/T-Flash/M2
Indicators	Power / USB link, Card detect and data activity
Supported cards	Secure Digital, Secure Digital High Capacity, mini SD, Multi Media, RS MMC card microSD, and M2
USB Transfer Speed	Up to 480 Mbps
USB Cable	USB A-type plug to mini-USB plug
OS Support	Windows 2000, Windows XP, Windows Vista, Windows 7, Mac OS 10.x or higher
Dimensions (L × D × H)	2.24 × 1.0 × 0.53 inches (57 × 26 × 13.42 mm)
Operating temperature	32 F~104 F (0 C~40 C)
Storage temperature	-4 F~140 F (-20 C~60 C)
Certification	FCC Class B, ICES-003, RoHS compliant

# Legal notices

## FCC statement

This equipment has been tested and found to comply with the limits for a Class B digital device, pursuant to Part 15 of the FCC Rules. These limits are designed to provide reasonable protection against harmful interference in a residential installation. This equipment generates, uses and can radiate radio frequency energy and, if not installed and used in accordance with the instructions, may cause harmful interference to radio communications. However, there is no guarantee that interference will not occur in a particular installation. If this equipment does cause harmful interference to radio or television reception, which can be determined by turning the equipment off and on, the user is encouraged to try to correct the interference by one or more of the following measures:

- Reorient or relocate the receiving antenna.
- Increase the separation between the equipment and receiver.
- Connect the equipment into an outlet on a circuit different from that to which the receiver is connected.
- Consult the dealer or an experienced radio/TV technician for help.



## One-year limited warranty

Dynex Products (“Dynex”) warrants to you, the original purchaser of this new **DX-CRMN1** (“Product”), that the Product shall be free of defects in the original manufacture of the material or workmanship for a period of one (1) year from the date of your purchase of the Product (“Warranty Period”). This Product must be purchased from an authorized dealer of Dynex brand Products and packaged with this warranty statement. This warranty does not cover refurbished product. If you notify Dynex during the Warranty Period of a defect covered by this warranty that requires service, terms of this warranty apply.

### How long does the coverage last?

The Warranty Period lasts for one year (365 days) from the date you purchased the Product. The purchase date is printed on the receipt you received with the Product.

### What does this warranty cover?

During the Warranty Period, if the original manufacture of the material or workmanship of the Product is determined to be defective by an authorized Dynex repair center or store personnel, Dynex will (at its sole option): (1) repair the Product with new or rebuilt parts; or (2) replace the Product at no charge with new or rebuilt comparable products or parts. Products and parts replaced under this warranty become the property of Dynex and are not returned to you. If service of products and parts are required after the Warranty Period expires, you must pay all labor and parts charges. This warranty lasts as long as you own your Dynex Product during the Warranty Period. Warranty coverage terminates if you sell or otherwise transfer the Product.

### How to obtain warranty service?

If you purchased the Product at a retail store location, take your original receipt and the Product to the store you purchased it from. Make sure that you place the Product in its original packaging or packaging that provides the same amount of protection as the original packaging. If you purchased the Product from an online web site, mail your original receipt and the Product to the address listed on the web site. Make sure that you put the Product in its original packaging or packaging that provides the same amount of protection as the original packaging.

To obtain in-home warranty service for a television with a screen 25 inches or larger, call 1-888-BESTBUY. Call agents will diagnose and correct the issue over the phone or will have an Dynex-approved repair person dispatched to your home.

### **Where is the warranty valid?**

This warranty is valid only to the original purchaser of the Product in the United States, Canada, and Mexico.

### **What does the warranty not cover?**

This warranty does not cover:

- Customer instruction
- Installation
- Set up adjustments
- Cosmetic damage
- Damage due to acts of God, such as lightning strikes
- Accident
- Misuse
- Abuse
- Negligence
- Commercial use
- Modification of any part of the Product
- Plasma display panel damaged by static (non-moving) images applied for lengthy periods (burn-in).

This warranty also does not cover:

- Damage due to incorrect operation or maintenance
- Connection to an incorrect voltage supply
- Attempted repair by anyone other than a facility authorized by Dynex to service the Product
- Products sold as is or with all faults
- Consumables, such as fuses or batteries
- Products where the factory applied serial number has been altered or removed

REPAIR REPLACEMENT AS PROVIDED UNDER THIS WARRANTY IS YOUR EXCLUSIVE REMEDY. DYNEX SHALL NOT BE LIABLE FOR ANY INCIDENTAL OR CONSEQUENTIAL DAMAGES FOR THE BREACH OF ANY EXPRESS OR IMPLIED WARRANTY ON THIS PRODUCT, INCLUDING, BUT NOT LIMITED TO, LOST DATA, LOSS OF USE OF YOUR PRODUCT, LOST BUSINESS OR LOST PROFITS. DYNEX PRODUCTS MAKES NO OTHER EXPRESS WARRANTIES WITH RESPECT TO THE PRODUCT, ALL EXPRESS AND IMPLIED WARRANTIES FOR THE PRODUCT, INCLUDING, BUT NOT LIMITED TO, ANY IMPLIED WARRANTIES OF AND CONDITIONS OF MERCHANTABILITY AND FITNESS FOR A PARTICULAR PURPOSE, ARE LIMITED IN DURATION TO THE WARRANTY PERIOD SET FORTH ABOVE AND NO WARRANTIES, WHETHER EXPRESS OR IMPLIED, WILL APPLY AFTER THE WARRANTY PERIOD. SOME STATES, PROVINCES AND JURISDICTIONS DO NOT ALLOW LIMITATIONS ON HOW LONG AN IMPLIED WARRANTY LASTS, SO THE ABOVE LIMITATION MAY NOT APPLY TO YOU. THIS WARRANTY GIVES YOU SPECIFIC LEGAL RIGHTS, AND YOU MAY ALSO HAVE OTHER RIGHTS, WHICH VARY FROM STATE TO STATE OR PROVINCE TO PROVINCE.

Contact Dynex:

For customer service please call 1-800-305-2204

[www.dynexproducts.com](http://www.dynexproducts.com)

Distributed by Best Buy Purchasing, LLC

7601 Penn Avenue South, Richfield, Minnesota, U.S.A. 55423-3645

© 2009 Best Buy Enterprise Services, Inc.

All rights reserved. DYNEX is a trademark of Best Buy Enterprise Services, Inc.

Registered in some countries. All other products and brand names are trademarks of their respective owners.

**DYNEX**™

[www.dynexproducts.com](http://www.dynexproducts.com) (800) 305-2204

© 2009 Best Buy Enterprise Services, Inc. All rights reserved.

DYNEX is a trademark of Best Buy Enterprise Services, Inc. Registered in some countries. All other products and brand names are trademarks of their respective owners.

Distributed by Best Buy Purchasing, LLC  
7601 Penn Ave. South, Richfield, MN 55423 U.S.A.

09-0472  
ENGLISH