

# **Dell 2000FP Logic Board Installation Instructions**

The Dell 2000FP was designed for a wide variety of users ranging from the home, small office, or corporate environment. It utilizes a 20.1-inch (51.0cm) Active Matrix TFT LCD that displays sharp and brilliant images of text and graphics with a maximum resolution up to 1600 x 1200 pixels.

### Common Problems associated with this model:

1. Black Display (screen goes black).
2. Front Panel Buttons won't work.
3. Front Panel Lights stay yellow.
4. Picture blurring.

### Resolving these issues (Part Replacement):

1. Replace the logic board 48.L3701.A02 Manufactured by BENQ.

### This Logic Board works on the following models:

BRAND	MODEL	REMARK
DELL	2000FP	20.1" LCD MONITOR

### Disassembly Instructions:

1. Place monitor face down on flat surface using a soft towel to avoid scratching the LCD screen.
2. Use a cup or other small container to hold the screws as they are removed.
3. It is recommended, not required, that you purchase a static wrist guard or other anti-static guard. These can be purchased at a nominal cost at a computer hardware store or electronics repair shop.
4. Make sure the unit is unplugged and the power supply/plug is removed from the unit.
5. **Important:** Do not apply force onto the LCD screen at anytime, this will cause permanent damage.
6. This manual is provided as a reference guide. If you do not understand disassembly process or you do not feel that you are competent to perform the repair, then you should have the repair completed by a professional repair technician.

### Disclaimer:

Norris Parts provides this manual for reference only. Norris Parts is not responsible for any actions taken by the user of this manual. Norris Parts is not responsible for damage resulting from the repair or use of any equipment referenced in this manual.

## Disassembly



**Step 1:**

**Remove the four (4) screws from the top of the base.**



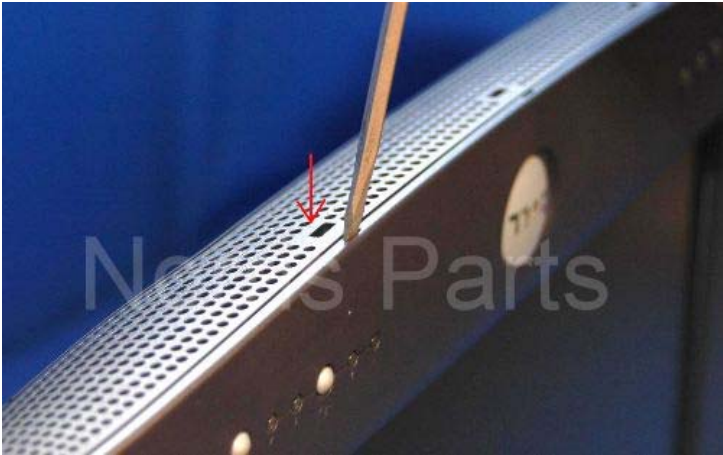
**Step 2:**

**Remove the base.**



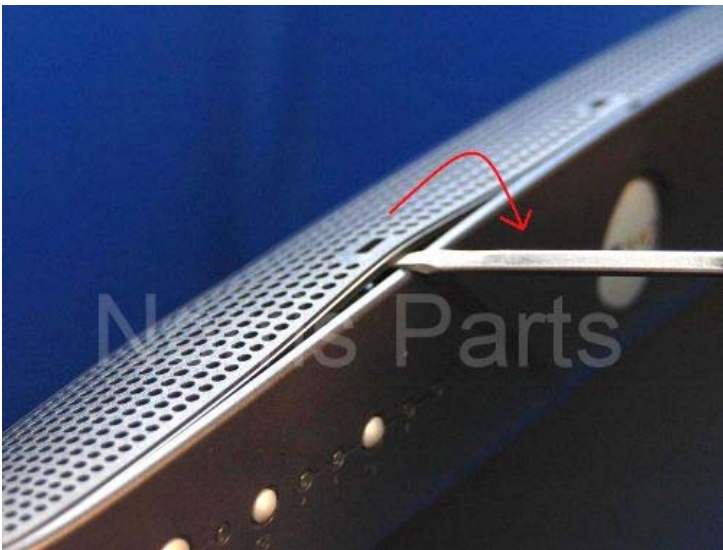
**Step 3:**

**Remove the four (4) screws from the back cover.**



**Step 4:**

**Stick a flat screw driver between the back cover and the front bezel on the bottom of the LCD.**



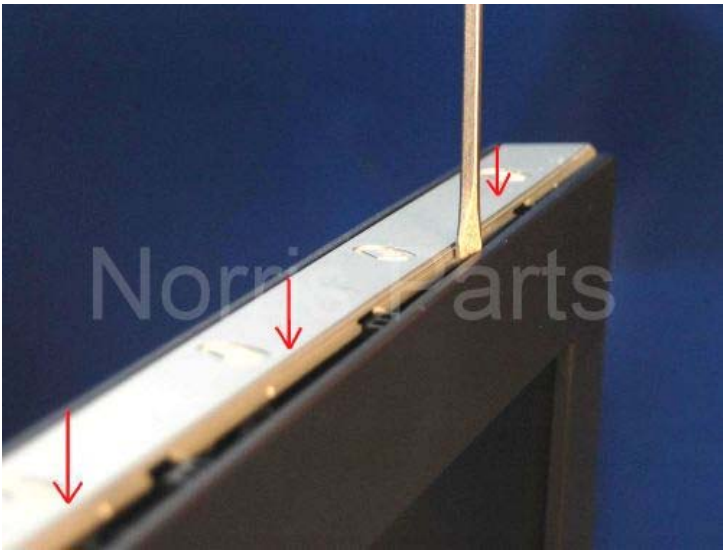
**Step 5:**

**Remove the back cover from the bottom of the LCD.**



**Step 6:**

**Remove the back cover from the bottom of the LCD.**



**Step 7:**

**Rotate the LCD to the side to continue removing the back cover.**



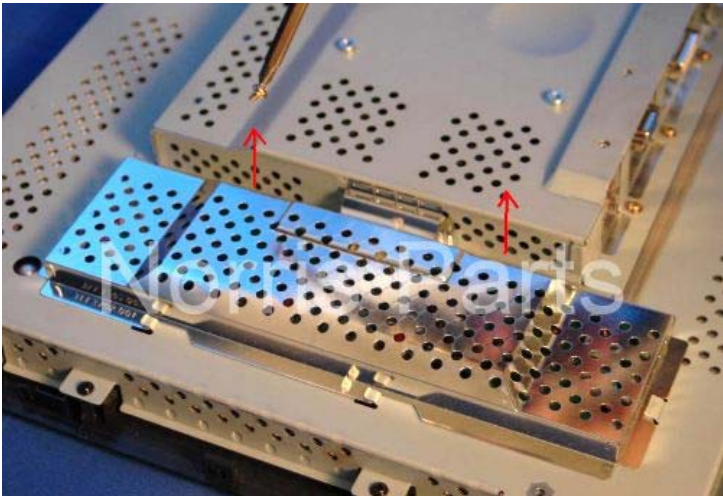
**Step 8:**

**Rotate the LCD to the other side to continue removing the back cover.**



**Step 9:**

**Remove the back cover.**



**Step 10:**

**Remove the two (2) screws from the inverter board's metal cover.**



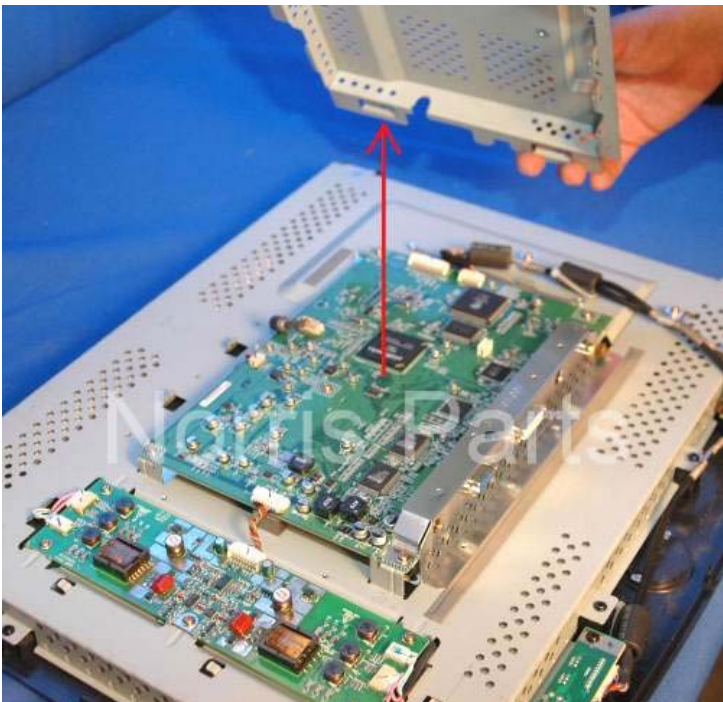
**Step 11:**

**Remove the inverter board's metal cover.**



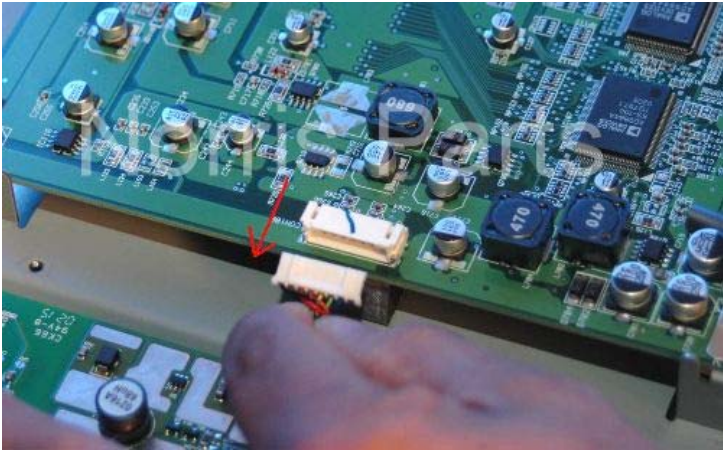
**Step 12:**

**Remove the fifteen (15) screws from the logic board's metal cover.**



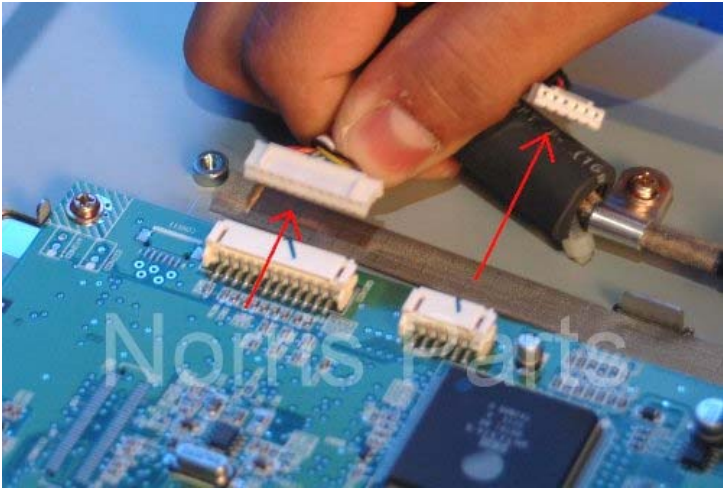
**Step 13:**

**Remove the logic board's metal cover.**



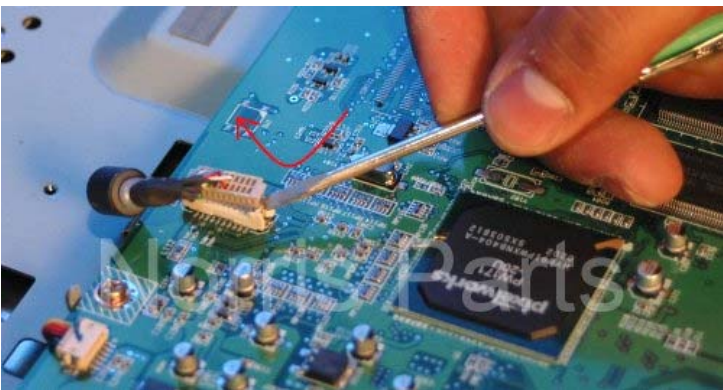
**Step 14:**

**Unplug connector from the logic board.**



**Step 15:**

**Unplug the two (2) connectors from the logic board.**



**Step 16:**

**Unplug connector from the logic board.**





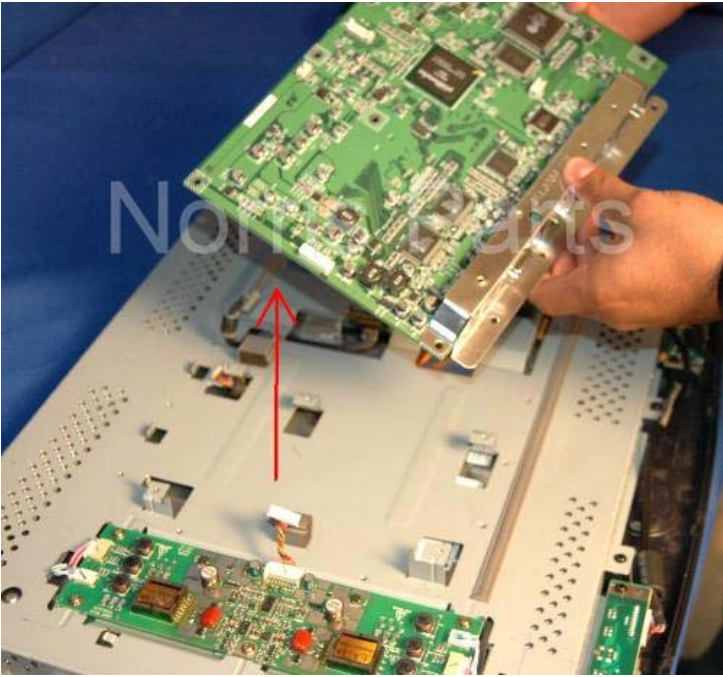
**Step 17:**

**Unplug connector from the logic board.**



**Step 18:**

**Remove the seven (7) screws from the logic board.**

**Step 19:**

**Remove the logic board.**

**Step 20 – Reassembly**

**Inspect new part ensuring that any packing materials or tape are removed.**

**Follow the directions in reverse to complete the installation of the replacement part. Make sure that all connectors are plugged in. Make sure that you replace all screws into their assemblies.**