



Performance Hardware
User's Guide

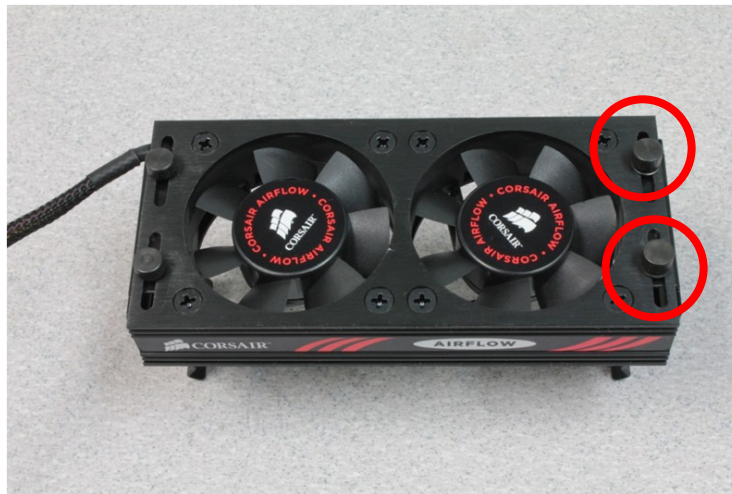
Corsair Airflow PRO Quick Install Guide



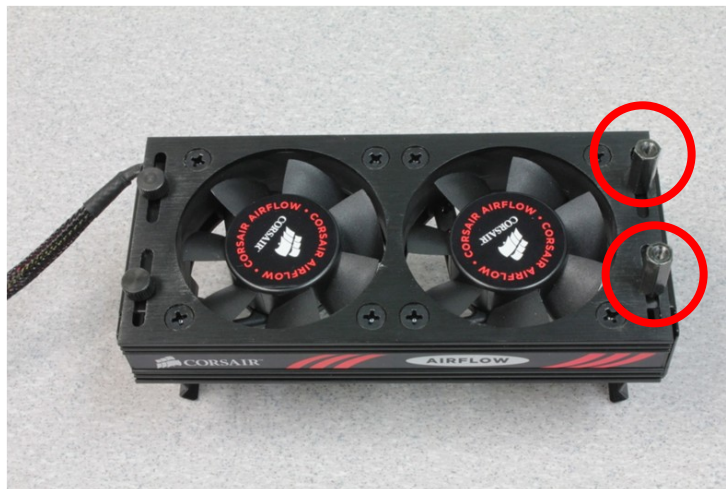
A pictorial step-by-step of how to install your new Airflow PRO memory activity and temperature monitor device.

1

Remove two screws from the top of your Dominator Airflow Fan

**2**

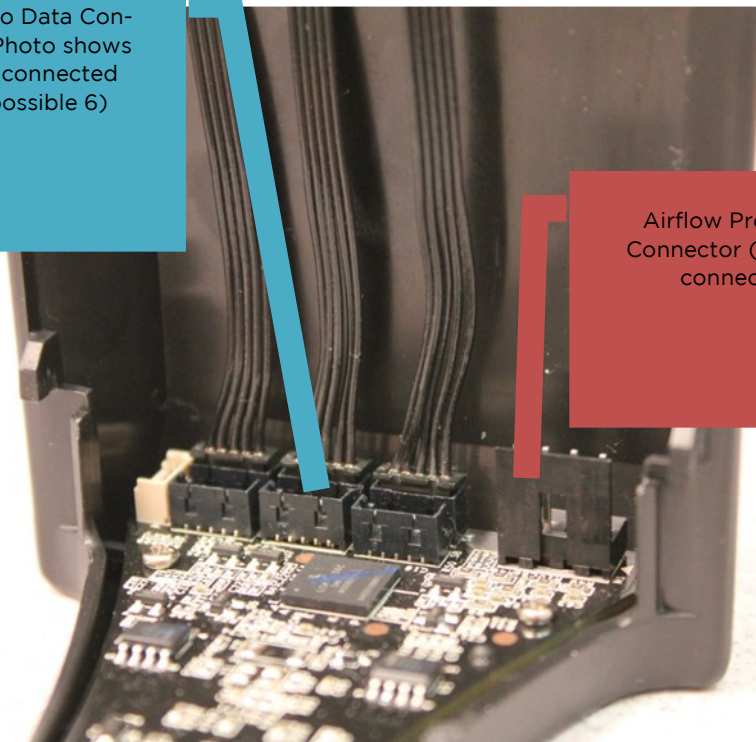
Fasten standoffs to screw locations



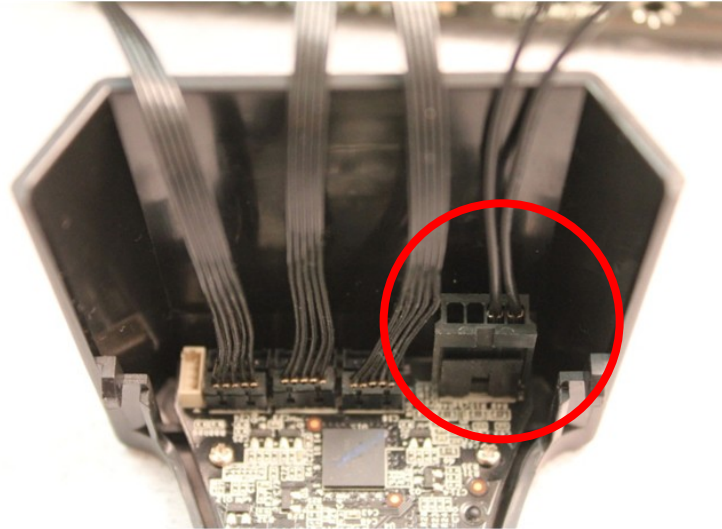
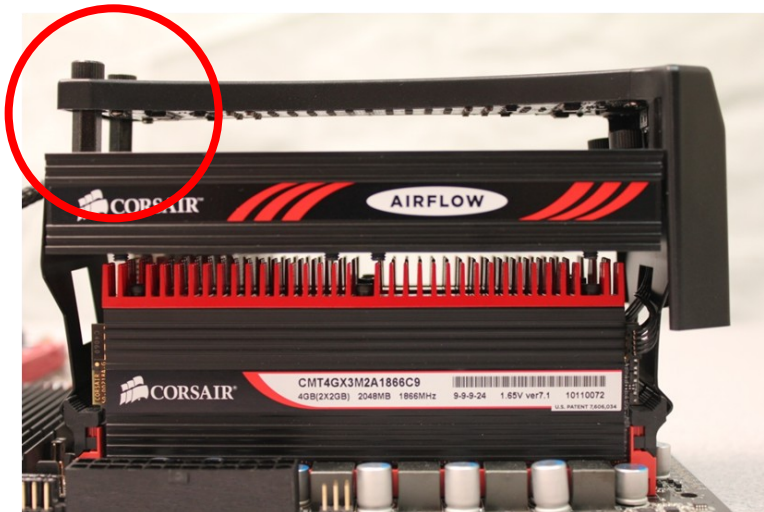
3

The Airflow Pro display device has six separate data leads for the activity LEDs. Turn the module over and locate the appropriate connectors for the number of memory modules you have. (Don't worry, even if you only have two modules, all six LED banks will still light up with peak or average memory activity)

Airflow Pro Data Connectors (Photo shows 3 cables connected out of possible 6)

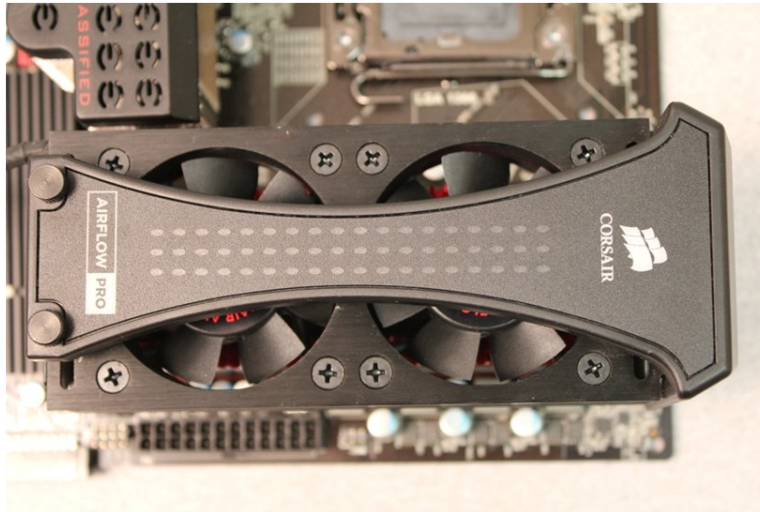


Airflow Pro Power Connector (cable not connected)

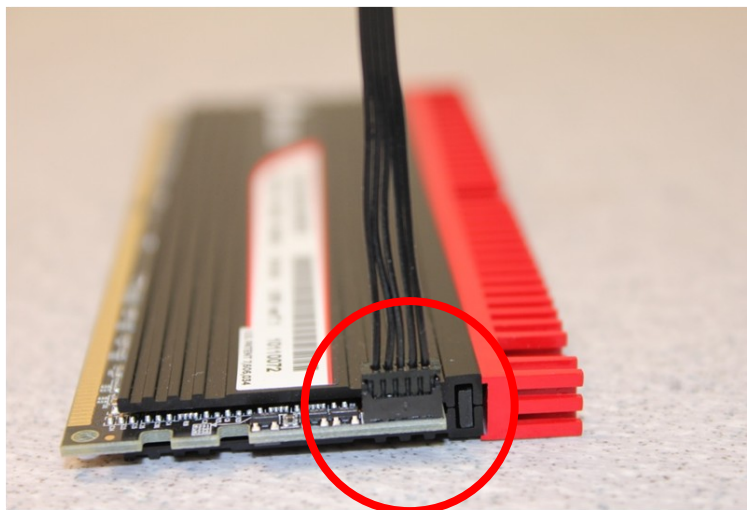
4**Connect the power cable.****5****Turn your Airflow Pro device over and attach it to the Airflow fan by using the two screws from step 1.**

6

When attached correctly, the top part of the Airflow Pro sits on the Airflow fan and the bottom is fastened using the thumbscrews that were removed during step 1.

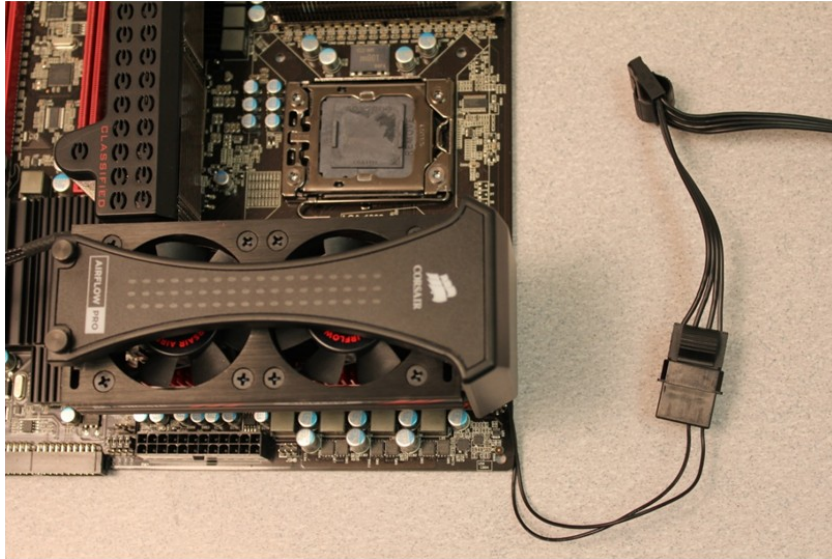
**7**

Connect the data cables to the DHX Pro connectors on your Dominator Memory.



8

Connect the power cable to an available 4-pin molex adapter from your power supply.

**9**

Power on your system and enjoy the show!



Resources

Corsair Airflow PRO Product Page:

<http://www.corsair.com/products/airflowpro/default.aspx>

