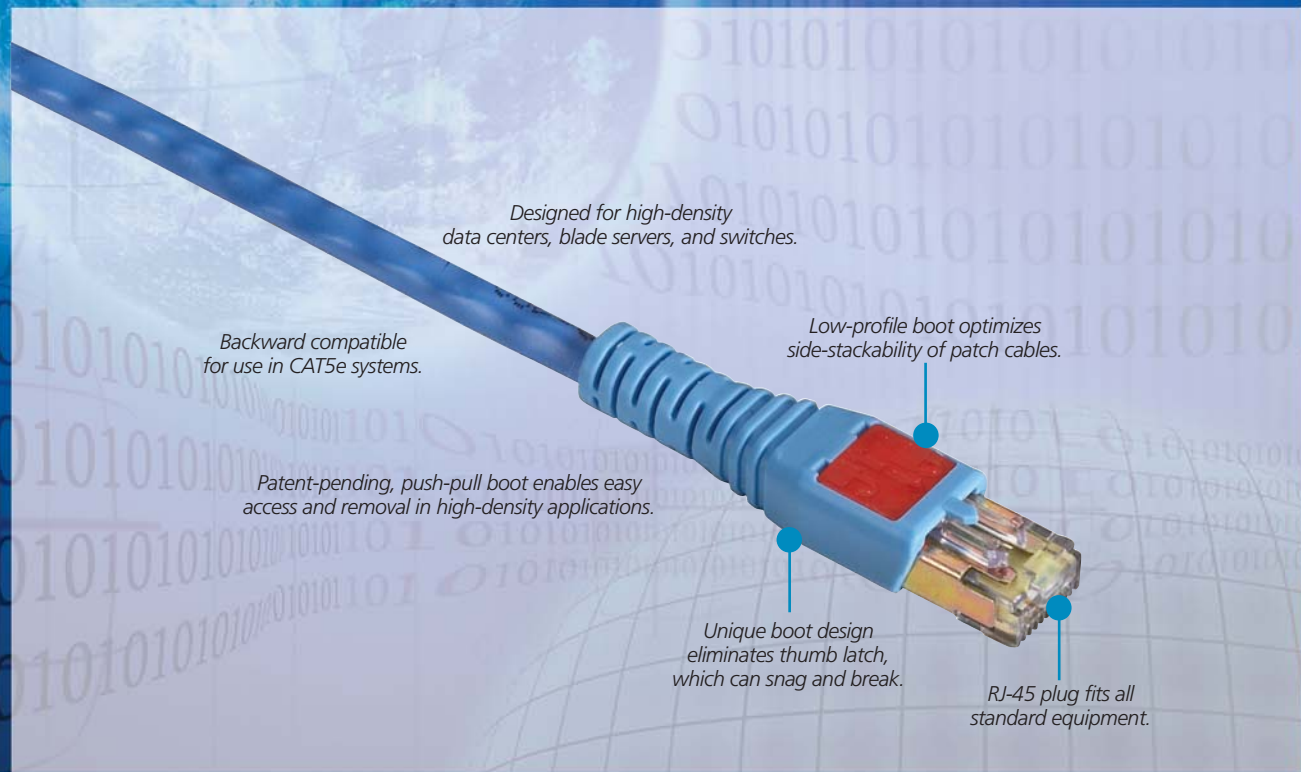


Cable technology on the cutting edge

CAT6/CAT6a

HIGH-DENSITY DATA CENTER PATCH CABLES



Designed for high-density data centers, blade servers, and switches.

Backward compatible for use in CAT5e systems.

Patent-pending, push-pull boot enables easy access and removal in high-density applications.

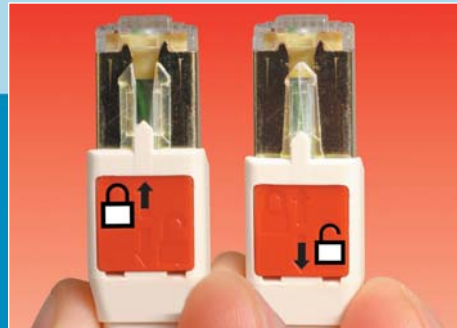
Low-profile boot optimizes side-stackability of patch cables.

Unique boot design eliminates thumb latch, which can snag and break.

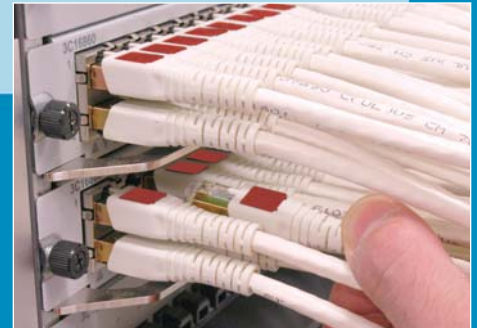
RJ-45 plug fits all standard equipment.



Unique push-pull plug fits all standard RJ-45 equipment.



Simply push the boot forward to latch into the outlet. Then pull back to release. No thumbtabs to break.



Ultra-thin for tight-fitting applications, such as blade servers, patch panels, and switches.

724-746-5500

 **BLACK BOX**
NETWORK SERVICES

blackbox.com

CAT6 and CAT6a High-Density Data Center Patch Cables (UTP)

Cable designed especially for data centers, blade servers and tight spaces.

CAT6

CAT6a



- Patent-pending, push-pull boot design makes it easy to insert and remove cables in high-density data center applications such as blade servers, patch panels, and switches.
- Slim, low-profile boot design enables side-by-side stackability.
- RJ-45 plugs fit all standard RJ-45 equipment.
- Design eliminates the thumb tab, which can snag and break.
- Boot provides excellent bend relief.
- Backwards compatible with lower category systems.
- Constructed with premium stranded cable.

CAT6 Cable

- 250-MHz cable supports Gigabit Ethernet.
- CAT6 cable meets ANSI/TIA/EIA-568-B.2-1 and ISO/IEC 11801:2002 specifications.
- Backward compatible with CAT5e.
- For specifications, see blackbox.com.

CAT6a Cable

- 500-MHz cable supports 10GBASE-T and beyond.
- Exceeds all pending 10GbE requirements, including alien crosstalk.
- Dual jacket construction provides excellent alien crosstalk performance.
- Fully shielded to meet all CAT6a performance specifications.
- Small inner cable diameter improves bend radius and flexibility.
- Backward compatible with CAT6 and CAT5e.
- **FIDO PROTECTION®** — Lifetime

Item		Code
CAT6 High-Density Data Center Patch Cable, RJ-45, T568B, Stranded, LS0H		
3-ft. (0.9-m)	Gray	EVNSL6-70-B5-0003
	Blue	EVNSL6-71-B5-0003
	White	EVNSL6-80-B5-0003
5-ft. (1.5-m)	Gray	EVNSL6-70-B5-0005
	Blue	EVNSL6-71-B5-0005
	White	EVNSL6-80-B5-0005
7-ft. (2.1-m)	Gray	EVNSL6-70-B5-0007
	Blue	EVNSL6-71-B5-0007
	White	EVNSL6-80-B5-0007
10-ft. (3.0-m)	Gray	EVNSL6-70-B5-0010
	Blue	EVNSL6-71-B5-0010
	White	EVNSL6-80-B5-0010
15-ft. (4.5-m)	Gray	EVNSL6-70-B5-0015
	Blue	EVNSL6-71-B5-0015
	White	EVNSL6-80-B5-0015
20-ft. (6.0-m)	Gray	EVNSL6-70-B5-0020
	Blue	EVNSL6-71-B5-0020
	White	EVNSL6-80-B5-0020

Item		Code
CAT6a High-Density Data Center Patch Cable, RJ-45, T568B, Stranded, LS0H		
3-ft. (0.9-m)	Gray	EVNSL6A-70-B5-0003
	Blue	EVNSL6A-71-B5-0003
	White	EVNSL6A-80-B5-0003
5-ft. (1.5-m)	Gray	EVNSL6A-70-B5-0005
	Blue	EVNSL6A-71-B5-0005
	White	EVNSL6A-80-B5-0005
7-ft. (2.1-m)	Gray	EVNSL6A-70-B5-0007
	Blue	EVNSL6A-71-B5-0007
	White	EVNSL6A-80-B5-0007
10-ft. (3.0-m)	Gray	EVNSL6A-70-B5-0010
	Blue	EVNSL6A-71-B5-0010
	White	EVNSL6A-80-B5-0010
15-ft. (4.5-m)	Gray	EVNSL6A-70-B5-0015
	Blue	EVNSL6A-71-B5-0015
	White	EVNSL6A-80-B5-0015
20-ft. (6.0-m)	Gray	EVNSL6A-70-B5-0020
	Blue	EVNSL6A-71-B5-0020
	White	EVNSL6A-80-B5-0020

FREE Tech Support—whether you buy or not!

- FREE hotline Tech Support 24/7/365.
- No obligations. No contracts. No catches.
- *Fast service.* We'll answer your call in 20 seconds or less.
- In-house advice. Our techs answer your calls directly from our headquarters near Pittsburgh, PA.



Call 724-746-5500 or go to blackbox.com!

