

CYCLE SENSOR KITS (CLOSED ELECTRICAL CONTACT TYPE) FOR 3/8" & 1/2" DIAPHRAGM PUMPS

CYCLE SENSOR KITS

67386 can be used on the following diaphragm pumps:

3/8" - PD03P-XXX-XXX

1/2" - PD05A-XXX-XXX-B, PD05P-XXX-XXX-B and PD05R-XXX-XXX-B

GENERAL DESCRIPTION

The ARO diaphragm pump cycle sensor kits provide a closed contact output each time the pump completes a cycle. This signal may be used to record cycles for maintenance purposes or batching if the discharge volume of each complete cycle is known.

Some parts of the pump must be replaced with those included in the kits to enable the activation of the switch.

OPERATION

Maximum Operating Voltage - 200 V DC.

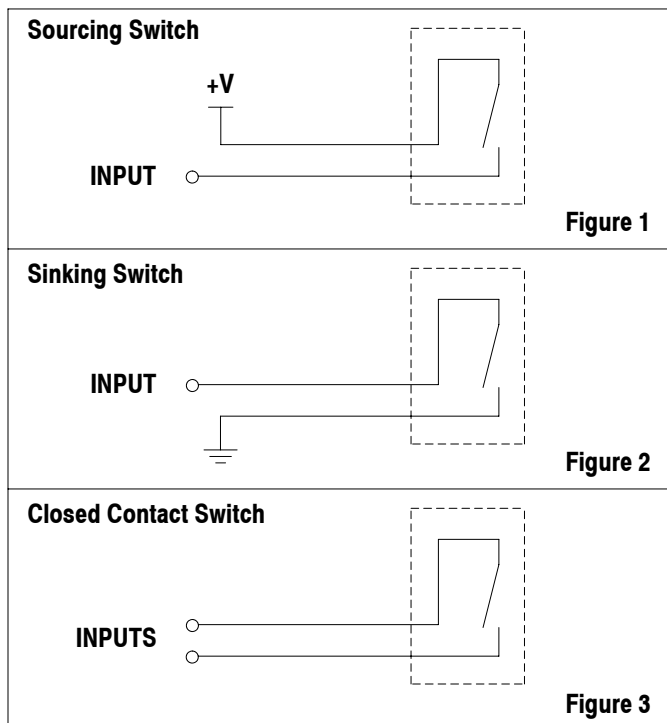
Switching Current - 0.5 Amps

Once the kit is installed in the pump, it may be interfaced with a control device in the following ways:

As a SOURCING switch (see figure 1) for use with PLC's.

As a SINKING switch (see figure 2) for use with PLC's.

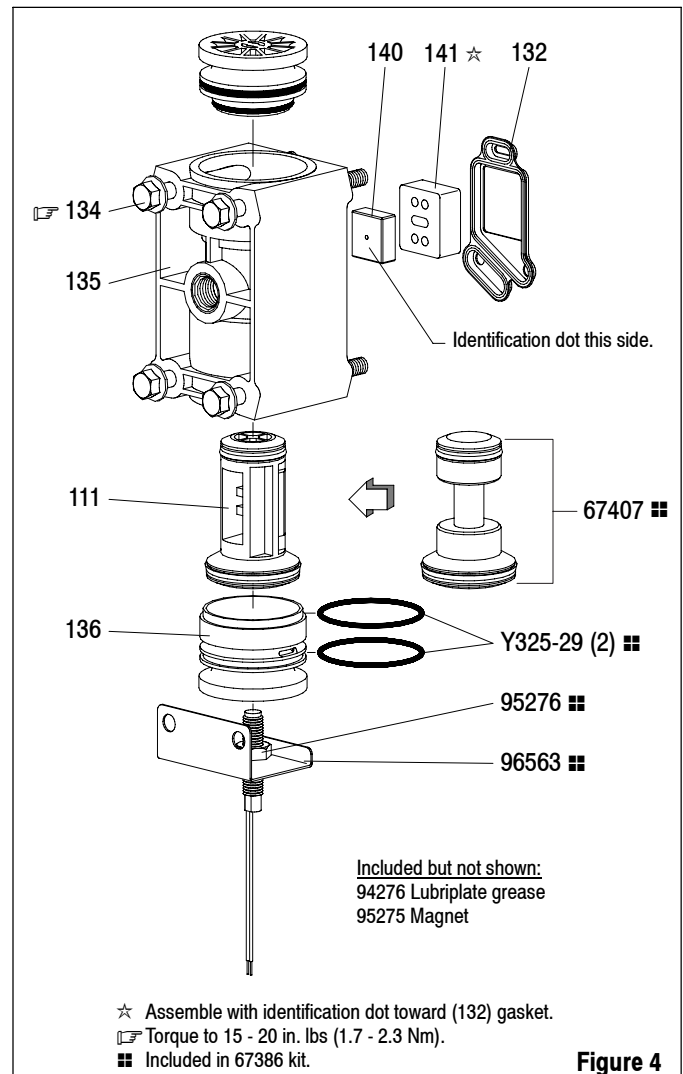
As a closed contact switch (see figure 3) for use with meters.



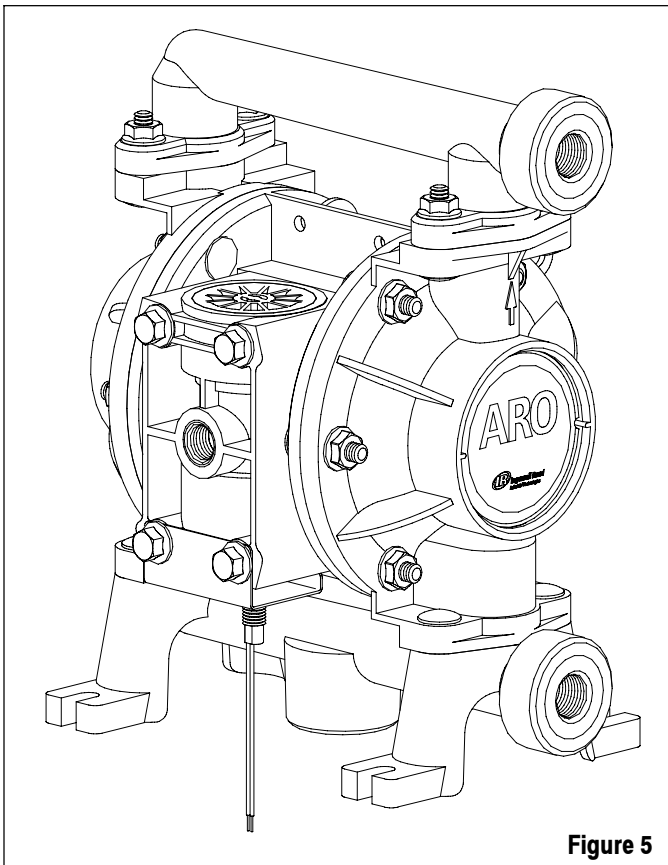
67386 SENSOR INSTALLATION

Refer to figure 4.

1. Remove (134) bolts from the major valve and remove (135) valve block.
2. Remove (141) valve plate and (140) valve insert from the valve block.
3. Remove (136) plug and (111) spool. Assemble 67407 spool and (136) plug into valve block. NOTE: Apply Lubriplate (94276) to all "O" rings, "U" cups and mating parts.
4. Replace (140) valve insert and (141) valve plate in valve block. NOTE: Assemble (140) valve insert with "dished" side toward (141) valve plate.
5. Assemble 96563 adapter (with 95276 sensor attached) to valve block. Attach (135) valve block to (101) motor body, using (134) bolts. NOTE: Torque to 15 - 20 in. lbs (1.7 - 2.3 Nm).



ASSEMBLY VIEW



CROSS SECTION VIEW

