

Thank you for purchasing this high quality Insignia USB to Ethernet Adapter. Use this adapter to instantly connect to a 10/100 Mbps network from the USB port on your desktop or laptop computer.

PACKAGE CONTENTS

- USB to Ethernet Adapter
- Driver CD
- *Quick Setup Guide*

SETTING UP THE ADAPTER

Note: The driver software must be installed before you connect the adapter. The adapter does not need to be connected for the software to install.

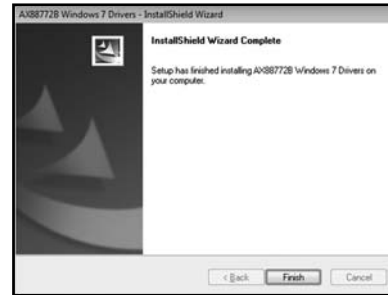
To install on a Windows PC:

- 1 Insert the driver CD into the optical drive on your computer. The software should run automatically. The initial installation screen opens.
Note: If the software does not run automatically, locate and double-click **Run.exe** on the driver CD.
- 2 Click on your operating system, then follow on-screen instructions.



Note: If the computer has Windows 8, you do not need to install the driver from the disc. The drivers are installed automatically.

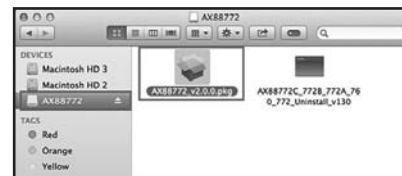
- 3 When the installation is complete, click **Finish** to restart your computer and finish the installation.



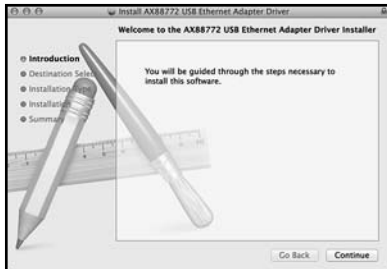
- 4 Connect the USB connector on the adapter to an open USB port on your desktop or laptop computer.
- 5 Connect a network cable to the Ethernet port on the adapter.

To install on a Mac:

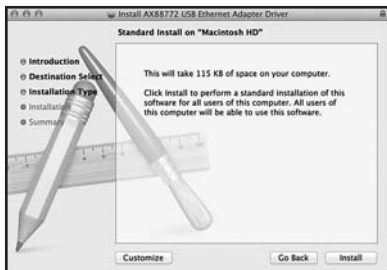
- 1 Insert the driver CD into the optical drive of your computer. On the driver CD, locate and click **AX88772.dmg**. Click the **AX88772** icon (). The driver setup driver setup dialog box opens.



- 2 When the installer screen opens, click **Continue** to start the installation, then follow the instructions to complete the installation.



You may be prompted to enter your system username and password during installation.



- 3 Click **Install**, then when the confirmation message appears, click **Continue Installation**.

- 4 When installation is complete, click **Restart** to restart the computer and finish the installation.



- 5 Connect the USB connector on the adapter to an open USB port on your desktop or laptop computer.
- 6 Connect a network cable to the Ethernet port on the adapter.

TROUBLESHOOTING

My computer does not detect the enclosure

- Make sure all of the cables and plugs are securely fastened.
- Make sure USB connector and network cable are not broken.
- Try using another USB port on the PC or laptop.
- Check for motherboard compatibility issues.
- Check for driver compatibility issues.

I do not see the additional driver in my system

- Make sure USB connector and network cable are not broken.
- Make sure that the driver is installed correctly by selecting (for Windows) **Start>Control Panel>Device Manager>Network Adapters**. Look for a string like ASIX AX88772B USB 2.0 to Fast Ethernet Adapter.
- Install the driver again according to the installation steps in QSG.
- Shut down your firewall in case your anti-virus program is preventing the installation of the driver software.
- Check for motherboard compatibility issues.
- Check for driver compatibility issues.

LEGAL NOTICES

FCC Information

This device complies with Part 15 of the FCC Rules. Operation is subject to the following two conditions: (1) this device may not cause harmful interference, and (2) this device must accept any interference received, including interference that may cause undesired operation. This equipment has been tested and found to comply with the limits for a Class B digital device, pursuant to part 15 of the FCC Rules. These limits are designed to provide reasonable protection against harmful interference in a residential installation. This equipment generates, uses and can radiate radio frequency energy and, if not installed and used in accordance with the instructions, may cause harmful interference to radio communications. However, there is no guarantee that interference will not occur in a particular installation. If this equipment does cause harmful interference to radio or television reception, which can be determined by turning the equipment off and on, the user is encouraged to try to correct the interference by one or more of the following measures:

- Reorient or relocate the receiving antenna.
 - Increase the separation between the equipment and receiver.
 - Connect the equipment into an outlet on a circuit different from that to which the receiver is connected.
 - Consult the dealer or an experienced radio/TV technician for help.
- Changes or modifications not expressly approved by the part responsible for compliance could void the user's authority to operate the equipment.

ICES-003

This Class B digital apparatus complies with Canadian ICES-003; Cet appareil numérique de la classe B est conforme à la norme NMB-003 du Canada.

ONE-YEAR LIMITED WARRANTY

Visit www.insigniaproducts.com for details.

CONTACT INSIGNIA:

For customer service, call 877-467-4289 (U.S. and Canada) or 01-800-926-3000 (Mexico)
www.insigniaproducts.com

INSIGNIA is a trademark of Best Buy and its affiliated companies. Registered in some countries. Distributed by Best Buy Purchasing, LLC 7601 Penn Ave South, Richfield, MN 55423 U.S.A. ©2014 Best Buy. All rights reserved. Made in China