

Available from:

CablesPlus

U * S * A

Cables Plus, LLC

8504 Glazebrook Ave Richmond, VA 23228 ~ Toll Free (866) 678-5852

www.CablesPlusUSA.com

PowerCore System



Available from:

CablesPlus

U * S * A

Cables Plus, LLC

8504 Glazebrook Ave Richmond, VA 23228 ~ Toll Free (866) 678-5852

www.CablesPlusUSA.com

Table of Contents

Introduction 3

Getting familiar with the PowerCore System 4

Safety Precautions 5

Setting up the PowerCore System 6

Using the Mounting Bracket 7

Protecting Your Equipment 7

 Using the Fax/Modem Module..... 7

 Using the Coax Module..... 8

 Using the LAN Module..... 9

Removing the PowerCore System Modules 10

 Surge Protection Module..... 11

Installing PowerCore Devices 12

 How do I install a PowerCore device? 12

How does the PowerCore System work? 13

 How many devices can I stack? 14

Troubleshooting 15

Contacting GoldX Products 15

Warranty Information 16

 24 Karat Warranty 16

Registration 18

Appendix A 19

Appendix B 20

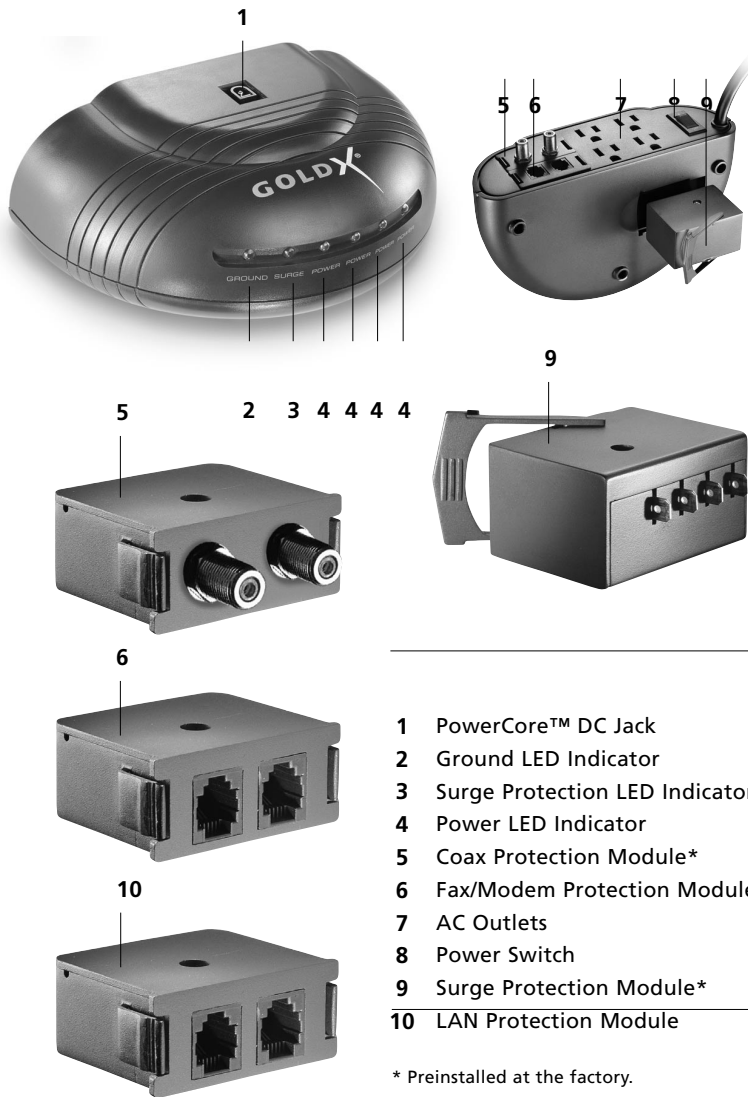
Introduction

Thank you for purchasing the GoldX PowerCore System.

The PowerCore System is the patented and patent-pending centerpiece of the GoldX PowerCore series of products. It is a modular surge protector with interchangeable modules for surge protection on your power, phone, cable and Ethernet lines

The PowerCore System also is a hub power supply for the PowerCore series of devices. Instead of having to accommodate an AC adapter for each new device, just plug the the device into the top of the PowerCore System or previously installed PowerCore device. The 12V, 4.7A power transformer has more than enough power to accommodate all of your requirements.

Getting familiar with the PowerCore System



- 1 PowerCore™ DC Jack
- 2 Ground LED Indicator
- 3 Surge Protection LED Indicator
- 4 Power LED Indicator
- 5 Coax Protection Module*
- 6 Fax/Modem Protection Module*
- 7 AC Outlets
- 8 Power Switch
- 9 Surge Protection Module*
- 10 LAN Protection Module

* Preinstalled at the factory.

Safety Precautions

Please review all instructions before installing the PowerCore System

- Only for use indoors in a dry environment.
- All household wiring must be properly grounded.
- Do not rest any object on the power cord.
- Do not spill any liquid on the PowerCore System.
- Do not insert any foreign objects into the power outlets on the PowerCore System.
- Do not insert any foreign objects into the PowerCore, Telecommunication, or Surge Protection slots on the PowerCore System.
- Do not operate any electronic equipment during an electrical storm. We recommend that you turn off ALL of your electronic equipment.
- Do not use the Surge Protector if the power cord is damaged.
- Do not use any adapter to connect the PowerCore System to a two-prong power outlet.
- Do not insert the PowerCore System power plug into another surge protector.
- Close supervision is necessary when used by or around small children.
- To disconnect, turn the power switch off, grip the power plug and pull from wall socket. Do not pull on cord.

CAUTION: DO NOT remove the cap from the PowerCore System or device unless installing a new PowerCore device.

Setting up the PowerCore System

1

CAUTION: If you connect the PowerCore System into another surge protector, two-prong power outlet, or use any adapter on the power plug, it will void your product and equipment warranties.

2

Insert the plug on the PowerCore System into an available wall-mounted, three-prong grounded power outlet.

3

Turn the power on.

4

All six LED's should now be on. The PowerCore System installation process is complete. You may now connect the power plugs for your peripherals into the four power outlets AND the GoldX PowerCore devices onto the top of the PowerCore System.

Using the Mounting Bracket

- If you choose to use the Mounting Bracket with the PowerCore System, you will need at least four standard metal screws.
- Place the Mounting Bracket in the preferred location.
- Insert the screws into the slots on the bottom of the Mounting Bracket.
- Insert the PowerCore System into the Mounting Bracket.

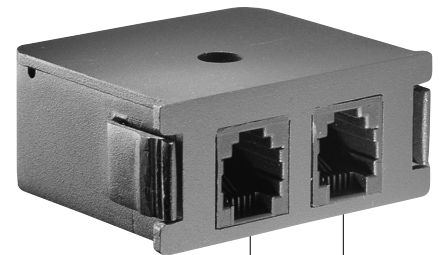
Protecting Your Equipment

Using the Fax/Modem Module

If you plan to use a device that requires a standard telephone (RJ11) cable, please configure the cables as shown below:

Insert the cable leading from the wall jack into the Fax/Modem Protection Module.

Insert the included 6' RJ11 cable into the Fax/Modem Protection Module and the secondary device (i.e. Serial Modem, Fax Machine, Telephone, etc...)



RJ11 Wall Jack

Serial Modem
Fax Machine
Telephone
DSL Modem

CAUTION: When installing a Cable Protection Module, please make sure you are installing the module correctly by ensuring that the brass strip is on the right side of the module.

Available from:

CablesPlus
U ★ S ★ A

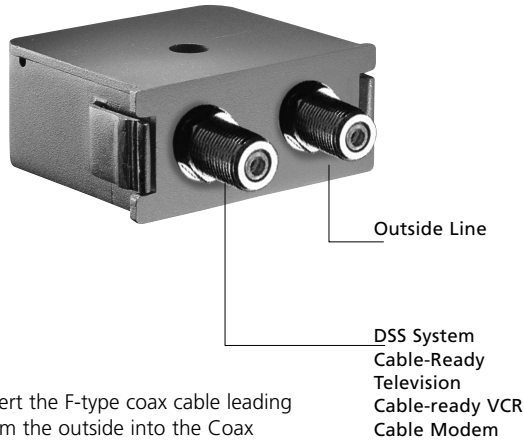
Cables Plus, LLC
8504 Glazebrook Ave Richmond, VA 23228 ~ Toll Free (866) 678-5852

www.CablesPlusUSA.com

Protecting Your Equipment

Using the Coax Module

If you plan to use a device that requires a Coaxial cable, please configure the cables as shown below:



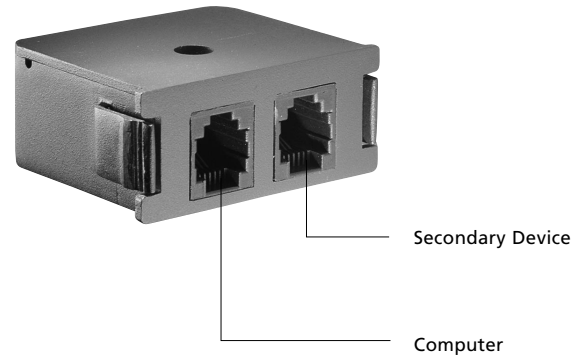
Insert the F-type coax cable leading from the outside into the Coax Protection Module.

Insert a F-type coax cable (sold separately) into the Coax Protection Module and the secondary device (i.e. DSS System, Cable-Ready Television, Cable-Ready VCR, Cable Modem etc...)

CAUTION: When installing a Cable Protection Module, please make sure you are installing the module correctly by ensuring that the brass strip is on the right side of the module.

Using the LAN Module

If you plan to use a device that requires a RJ45 patch cable, please configure the cables as shown below:



Insert the RJ45 patch cable leading from the outside into the secondary device (i.e. Switch, Router, Firewall, etc...)

Insert a RJ45 patch cable (sold separately) into the secondary device and the LAN Protection Module.

Insert a RJ45 patch cable (sold separately) into the LAN Protection Module and the Ethernet port on your computer.

CAUTION: When installing a Cable Protection Module, please make sure you are installing the module correctly by ensuring that the brass strip is on the right side of the module.

Removing the PowerCore System Modules

Cable Protection Modules

1

Press both tabs inward until you hear a slight click



2

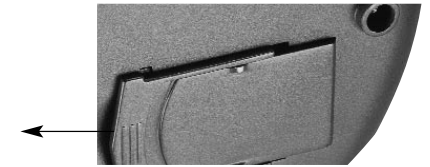
Pull the module out of the Cable Protection Module slot.

Removing the PowerCore System Modules

Surge Protection Module

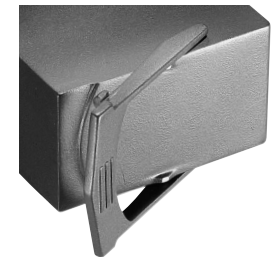
1

Pull the latch slightly away from the module.



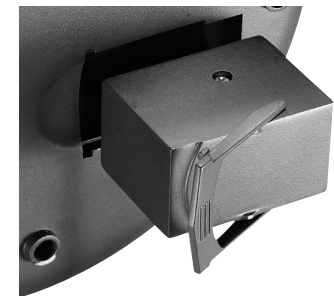
2

Place your finger underneath the latch and push upward until the Surge Protection Module is partially ejected from the slot.



3

Remove the Surge Protection Module from the PowerCore System



Installing PowerCore Devices

How do I install a PowerCore Device?

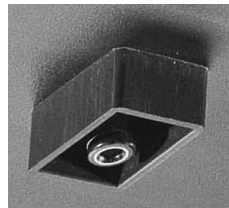
1

Remove the cap from the top of the PowerCore System or previously installed PowerCore Device.



2

Insert the DC Plug on the bottom of the PowerCore Device into the DC Jack on the top of the PowerCore System or previously installed PowerCore Device.



TIP: Aligning the backs of the PowerCore System and peripherals eases installation.

3

That's it. The device is now installed onto the PowerCore System. If it is a PowerCore™ powered device, at least one LED will be on.



WARNING: The PowerCore System passes electricity through the PowerCore to PowerCore devices that require power. Please note the following

- Do not insert any foreign objects into the PowerCore slots.

- Do not touch the DC Jack on an active PowerCore System or Device.
- Do not spill any liquid into the PowerCore slots.
- Do not remove the cap from a PowerCore System or Device unless you are installing a new PowerCore Device.

How does the PowerCore System work?

The GoldX PowerCore System and devices feature the patent-pending PowerCore™. The PowerCore™ is an internal 12V, 4.7Amp power transformer within the PowerCore System that provides 56 Watts of power for multiple PowerCore devices. All GoldX PowerCore devices feature a DC Plug and a DC Jack in the center of the unit to pass power up to the next device, as needed. Note all of the possible PowerCore device configurations:

PowerCore™ Powered Devices



4 PORT USB HUB

Please review the configuration guide on the following page to determine the amount of PowerCore USB Hubs that can be used within your specific environment.



3 PORT FIREWIRE HUB

Please review the configuration guide on the following page to determine the amount of PowerCore FireWire Hubs that can be used within your specific environment.



10/100 ETHERNET SWITCH

Please review the configuration guide on the following page to determine the amount of PowerCore Ethernet Switches that can be used within your specific environment.

USB Powered PowerCore Devices



USB BROADBAND ADAPTER

The USB Broadband Adapter is powered by the USB port on your computer.



USB PORT REPLICATOR

The USB Port Replicator is powered by the USB port on your computer.

Installing PowerCore Devices

How many devices can I stack?

The PowerCore System comes with a 56.4 Watt Internal Hub Power Supply. The power requirements for each PowerCore™ Powered device can be determined by using the following configuration guide. For example:

Description	Power Usage (Watts)
3 PORT FIREWIRE HUB	18.5 Watts
4 PORT USB HUB	10.8 Watts
10/100 ETHERNET SWITCH	9.9 Watts

Therefore, if you had 3 USB Hubs and 1 FireWire Hub

POWERCORE SYSTEM	56.4 Watts
USB HUB	-10.8 Watts
USB HUB	-10.8 Watts
USB HUB	-10.8 Watts
FIREWIRE HUB	-18.5 Watts
WATTS AVAILABLE	5.5 Watts

Device Configuration Guide

Device	Volts	Amps	Watts	Available Watts
PowerCore System	12	4.7	56.4	56.4

NOTE: Volts times Amps equals Watts

CAUTION: CAUTION: If you exceed the power requirements of the PowerCore™ System as shown above, you will void your warranty.

Troubleshooting

QUESTION/ISSUE	ANSWER
1 Why does the PowerCore System emit a loud alarm when I turn the power on?	The Surge Protection Module is not installed correctly. The Surge Protection Module is no longer functional. Please contact your reseller for a replacement.
2 The Grounding LED is not on.	The PowerCore System is connected into a 2-prong wall power outlet. Please connect the PowerCore System directly into a 3-prong grounded wall power outlet.

Contacting GoldX Products

Internet: www.goldxproducts.com
 Technical Support: techsupt@goldxproducts.com
 Sales: info@goldxproducts.com
 Telephone : 1-866-24GOLDX (1-866-244-6539)
 Mailing Address: GoldX Products
 2704 Paldan Drive
 Auburn Hills, MI 48326

Warranty Information

24 Karat Warranty

JDI warrants this PowerCore System to be free of defects in materials and workmanship for the useful lifetime of the product.

24 Karat Connected Equipment Warranty

If, during the time period listed for your model (see chart), any equipment properly connected to the PowerCore System is damaged by a transient spike on the AC power line (as defined by industry standards) that enters the equipment through a properly installed GoldX PowerCore System, Jo-Dan International, Inc.(JDI) will reimburse your reasonable cost to repair or replace the damaged equipment (at the option of JDI) up to a maximum U.S. dollar amount (see chart), subject to the following conditions: **1. Proper Installation:** The GoldX PowerCore System must be plugged directly into a properly wired and grounded AC outlet; no extension cords, adapters, other ground wires or electrical connections may be used to connect the GoldX PowerCore System to AC power. The wiring in the building must comply with all applicable codes (e.g., NEC or CSA). **2. Proper Equipment Connection:** All wires leading into the equipment must pass through an appropriate GoldX PowerCore System. To claim damage as a result of telephone line transients, the equipment must be properly connected to a GoldX PowerCore System which offers telephone line protection, and your telephone service equipment must include a properly installed and operating "primary protection" device at the service entrance. (Such devices are normally added during telephone line installation.)

	Product Warranty	Equipment Warranty	Equipment Warranty
GXSB-7555	Lifetime	\$25,000	Power-Line Spikes, Power-Line Surges, Coaxial Spikes, Ethernet Spikes, Phone-Line Spikes

What These Warranties Do Not Cover.

THIS WARRANTY DOES NOT COVER PRODUCT THAT HAS BEEN MISUSED, IMPROPERLY INSTALLED, TAMPERED WITH OR ALTERED IN ANY WAY, OR IF THE CONNECTED EQUIPMENT WAS NOT USED UNDER NORMAL OPERATION CONDITIONS IN ACCORDANCE WITH ANY LABELS OR INSTRUCTIONS. THESE WARRANTIES DO NOT INCLUDE: DAMAGE RESULTING FROM ACCIDENT OR MISUSE; DAMAGE RESULTING FROM A LIGHTNING STRIKE; AND TRANSIENT SPIKES ON DATA, COAXIAL OR COMMUNICATIONS LINES ATTACHED TO THE CONNECTED EQUIPMENT EXCEPT AS PROVIDED ABOVE (SEE CHART). THESE WARRANTIES SPECIFICALLY DO NOT COVER SUSTAINED OVERVOLTAGES (LONGER THAN 500 MICROSECONDS). EXCEPT AS PROVIDED ABOVE, IN NO EVENT WILL JDI BE LIABLE FOR DIRECT, INDIRECT, SPECIAL, INCIDENTAL OR CONSEQUENTIAL DAMAGES ARISING OUT OF THE USE OF THIS PRODUCT, EVEN IF ADVISED OF THE POSSIBILITY OF SUCH DAMAGE. SPECIFICALLY, JDI IS NOT LIABLE FOR ANY COSTS, SUCH AS LOST PROFITS OR REVENUE, LOSS OF EQUIPMENT, LOSS OF USE OF EQUIPMENT, LOSS OF SOFTWARE OR DATA, COST OF SUBSTITUTES, CLAIMS BY OTHER PARTIES, OR OTHERWISE. THESE WARRANTIES DO NOT COVER ANY DAMAGE TO PROPERLY CONNECTED EQUIPMENT RESULTING FROM A CAUSE OTHER THAN A TRANSIENT SPIKE. THE CONNECTED EQUIPMENT LIMITED WARRANTY IS NOT TRANSFERABLE FROM THE ORIGINAL SYSTEM OF REGISTRATION TO ANOTHER. SOME STATES DO NOT ALLOW THE EXCLUDING OR LIMITATION OF INCIDENTAL OR CONSEQUENTIAL DAMAGES, SO THE ABOVE LIMITATION OR EXCLUSION MAY NOT APPLY TO YOU. THESE WARRANTIES GIVE YOU SPECIFIC LEGAL RIGHTS, AND YOU MAY ALSO HAVE OTHER RIGHTS WHICH VARY FROM STATE TO STATE. VALID IN U.S.A. AND CANADA ONLY.

Claims Procedure: In the event the properly connected equipment is damaged as a result of an AC transient spike passing through a properly installed GoldX PowerCore System, the consumer must follow these procedures: **1. Returning the PowerCore System:** You should first call JDI to obtain a Return Authorization Number then return the PowerCore System with transportation charges prepaid to JDI for verification of surge damage accompanied by a brief description of how the damage occurred and proof of data and place of purchase. Please print your Return Authorization Number on the outside of the returned package where it can be easily seen or the package will be refused at JDI's receiving dock and returned to you. **2. Filing a Connected Equipment claim:** At the time a Return Authorization Number is issued, notification of damage to connected equipment must be given to JDI. To receive reimbursement for damage to connected equipment due to a covered power disturbance, you must first have repairs performed by a technician who is authorized by the manufacturer of the equipment and pay for those repairs, or purchase new equipment, whichever is more economical. A copy of the bill and a report from the Authorized Technician will determine whether the PowerCore System failed to provide protection. All reports will be available to the claimant. Determination of Failure: The returned PowerCore System will be tested by JDI to determine whether the product failed to provide protection. An evaluation of the results of that test and of the report from the Authorized Technician will determine whether the PowerCore System failed to provide protection.

NOTE: JDI reserves the right to inspect the damaged connected equipment, parts, or circuit boards, as well as the customer's facility (at JDI's expense). Damaged parts must be available for inspection in their unaltered state until the claim is finalized. **Reimbursement.** If all of the above requirements are met and the GoldX PowerCore System failed to provide protection, JDI will reimburse the claimant for the connected equipment at fair market value or for the repair of the connected equipment at customary and reasonable rates (at JDI's option) up to the maximum U.S. dollar amount listed for your model (see chart). If the claimant is a dealer and replacement of connected equipment is selected, JDI will not reimburse repair bills exceeding current replacement value of connected equipment. Whenever claims are settled, JDI reserves the right to be subrogated under any insurance policies of the claimant.

Disclaimer: JDI's policy is that all products meet their performance criteria. If the product performance criteria specified has failed, however, we will replace the product for the life of the product.

Available from:



Cables Plus, LLC
 8504 Glazebrook Ave Richmond, VA 23228 ~ Toll Free (866) 678-5852
 www.CablesPlusUSA.com

Registration

IMPORTANT: IN ORDER TO BE ELIGIBLE FOR THE PRODUCT AND EQUIPMENT WARRANTY, YOU MUST COMPLETE THE REGISTRATION PROCESS. PLEASE USE ONE OF THE FOLLOWING OPTIONS:

1

Register on our website at www.goldxproducts.com within 10 days of purchase.

OR

2

Complete the registration and connected equipment sections on the warranty card and mail to the following address within 10 days of purchase.
 GoldX Products ATTN: Warranty Registration
 2704 Paldan Drive Auburn Hills, MI 48326

Appendix A

Glossary

Broadband High-speed data transmission medium

Firewire Designed by Apple Computer®, FireWire (also known as i.Link® and IEEE-1394) is a high-speed technology for connecting computers and consumer electronic devices.

LAN Abbreviation of **Local Area Network**. A LAN is a system that links together electronic office equipment such as computers and printers to form a network within a building.

Surge A sudden increase of voltage or current.

USB Abbreviation of **Universal Serial Bus**. USB is a specification developed by group of companies to simplify the connection of external peripherals to a computer.

Appendix B

GoldX Part Number Reference

PowerCore System

POWERCORE SYSTEM

GXSB-7555	555 Joule PowerCore System Kit
GXSB-555	555 Joule Surge Module
GXSB-1110	1110 Joule Surge Module
GXSB-1665	1665 Joule Surge Module
GXSB-C	Coax Module
GXSB-FM	Fax/Modem Module
GXSB-L	LAN Module

USB DEVICES

GXSU-104	4 Port USB Port Replicator
GXSU-124	4 Port USB 2.0 Hub
GXSU-1210	USB Broadband Adapter
GXSU-1240	USB Port Replicator

FIREWIRE DEVICES

GXSF-103	3 Port FireWire Hub
----------	---------------------

ETHERNET DEVICES

GXSE-S105	5 Port 10/100 Ethernet Switch
-----------	-------------------------------

POWERCORE KITS

GXKSE-S105A	Ethernet Switch Kit
GXKSF-103A	FireWire Hub Kit
GXKSU-104A	USB Hub Kit
GXKSU-1240A	USB Port Replicator Kit

Appendix B

USB Devices

GXUSB-104	4 Port USB Hub
GX2A5V	5V, 2A Power Adapter for the GXUSB-104
GXU-2116	16ft. (4.6m) USB Active Extension Cable
GXMU-3000	USB PC-PC Network Cable
GXMU-1200	6ft. (1.8m) USB Serial Adapter
GXMU-1284	6ft. (1.8m) USB IEEE 1284 Printer Adapter

FireWire Devices

GXF-2115	15ft. (4.5m) FireWire Active Extension Cable
----------	--

Surge Protectors

GXS-701KR	6 Outlet Surge Protector Kit
GXS-703KM	6 Outlet Surge Protector with Free 1 Outlet Surge
GXS-702R	6 Outlet Surge Protector
GXS-710M	8 Outlet Surge Protector (with Fax/Modem Protection)
GXS-712MC	8 Outlet Surge Protector (with Multimedia Connection Protection)

Networking Accessories

GXN-PDT110	110 Punch Down Tool
GXN-C5EP12	12 Port Cat5e Patch Panel
GXN-C5EPA12R	12 Port Cat5e Patch Panel Rack Mountable
GXN-C5EPA24	24 Port Cat5e Patch Panel
GXN-C5EPA48	48 Port Cat5e Patch Panel
GXNC-ESK**	CAT 5e Patch Cable (** refers to cable length)
GXNC-1A**	RJ11 Cable (** refers to cable length)
GXNC-FK**	Coax Cable (** refers to cable length)

Available from:



Cables Plus, LLC
 8504 Glazebrook Ave Richmond, VA 23228 ~ Toll Free (866) 678-5852

www.CablesPlusUSA.com

Appendix B

Legacy Cables

GX128-06	6ft. (1.8m) Serial Extension Cable
GX200-06	6ft. (1.8m) IEEE-1284 Printer Cable
GX200-10	10ft. (3.0m) IEEE-1284 Printer Cable
GX200-15	15ft.(4.5m) IEEE-1284 Printer Cable
GX420-06	6ft. (1.8m) All-In-One Extension Cable

USB Cables

GX600-06	6ft. (1.8m) USB Device Cable
GX600-10	10ft. (3.0m) USB Device Cable
GX600-15	15ft (4.5m) USB Device Cable
GX601-06	6ft. (1.8m) USB Extension Cable
GX601-10	10ft. (3.0m) USB Extension Cable
GX620-06	6ft. (1.8m) USB 2.0 Device Cable
GX620-10	10ft. (3.0m) USB 2.0 Device Cable
GX620-15	15ft. (4.5m) USB 2.0 Device Cable

FireWire Cables

GX1394AA-06	6ft. (1.8m) 6 pin – 6 pin FireWire Cable
GX1394AA-10	10ft. (3.0m) 6 pin – 6 pin FireWire Cable
GX1394AA-15	15ft. (4.5m) 6 pin – 6 pin FireWire Cable
GX1394AB-06	6ft. (1.8m) 6 pin – 4 pin FireWire Cable
GX1394AB-10	10ft. (3.0m) 6 pin – 4 pin FireWire Cable
GX1394AB-15	15ft. (4.5m) 6 pin – 4 pin FireWire Cable
GX1394BB-06	6ft. (1.8m) 4 pin – 4 pin FireWire Cable
GX1394BB-10	10ft. (3.0m) 4 pin – 4 pin FireWire Cable
GX1394BB-15	15ft. (4.5m) 4 pin – 4 pin FireWire Cable

Disclaimer

The manufacturer does not make any representations or warranties (implied or otherwise) regarding the accuracy and completeness of this document and shall in no event be liable for any loss of profit or any other commercial damage, including but not limited to special, incidental, consequential, or other damages. JDI's policy is that all products meet their performance criteria. If the product performance criteria specified has failed, however, we will replace the product for the useable life of the product. No part of this document may be reproduced or transmitted in any form by any means, electronic or mechanical, including photocopying, recording or information recording and retrieval systems without the express written permission of the manufacturer. All brand names and product names used in this document are trademarks, or registered trademarks of their respective holders. JDI also reserves the right to update or revise the device or this documentation at any time without obligation to notify any individual or entity of such update, or revision. Revised versions of this document may be requested in writing to JDI. Copyright © 2002 Jo -Dan International, Inc. All rights reserved.

Available from:

CablesPlus

U ★ S ★ A

Cables Plus, LLC

8504 Glazebrook Ave Richmond, VA 23228 ~ Toll Free (866) 678-5852

www.CablesPlusUSA.com

Available from:

CablesPlus

U ★ S ★ A

Cables Plus, LLC

8504 Glazebrook Ave Richmond, VA 23228 ~ Toll Free (866) 678-5852

www.CablesPlusUSA.com