

SAMSUNG

Samsung Electronics America, Inc.
400 Valley Road, Suite 201 Mount Arlington, NJ 07856
1-800-SAMSUNG (1-800-726-7864)
www.samsung.com

AH68-01629L (Rev 0.0)

YP-T7



- 65,000 Color LCD
- MP3, WMA, Audio ASF, Secure WMA and Ogg Playback
- Removable Storage Device
- Text and Image Viewer
- Direct MP3 Recording
- FM Reception
- SRS WOW Surround Sound
- USB 2.0 High Speed Data Transfer
- Upgradable
- Built-in Rechargeable Li-polymer Battery
- Voice Recording Function

YP-T7

Contents

Contents

I Preparations

Safety Instructions	4
Battery Charger Safety	6
Charging the battery	7
Features	8
Components	11
Location of Controls.....	12

I Connection to Computer

Connecting the player to PC	14
Manual installation of the USB Driver	18
Using the removable storage(PC)	22
● Formatting on your PC	22
● Downloading/Uploading files	22
● Disconnecting the USB cable	23
● Transferring music files using Windows Media	24
Installing Music Studio.....	26
Using Music Studio	27
To View Help on Music Studio.....	31
Installing Multimedia Studio.....	32
Using Multimedia Studio	34
To View Help on Multimedia Studio.....	39

I Basic Usage

Playing Music and Turning Off the Device	40
HOLD Function	41
Recording Voice	41
Recording MP3s	42
Searching for Music/Voice Files	43
Loop Repeating	44
MENU Options.....	45

I Additional Usage

Using Navigation	45
Setting Playlist	49
FM Radio Settings.....	50
FM Recording	54
Viewing Image	55
Viewing Text	56
Setting the Advanced Functions	57
Selecting the Play mode	58
Sound Settings	59
Display Settings.....	62
Record Settings.....	65
Time Settings.....	66
Play Speed Settings	68
Deleting File.....	69
Setting the System	70

I Appendix

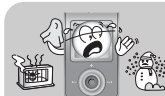
MENU Table	72
------------------	----

I Customer Support

Troubleshooting.....	73
Specifications	75
Safety Information	76
Warranty	78

Safety Instructions

Read and understand all the instructions to avoid injury to yourself and damage to the equipment.



Do not expose to extreme temperatures (above 95°F or below 23°F). Do not expose to moisture.



Do not subject the player to severe impact.



Do not let any foreign matter spill into the device.



Do not place heavy objects on the player.



Do not expose to chemicals such as benzene and thinners.



Do not touch the charger with wet hands.



Do not expose to direct sunlight or heat sources.



Do not store in dusty areas.



Do not try to disassemble and repair the device yourself.

* Please be aware that we claim no responsibility for damage from data loss due to breakdown, repair or other causes.

Safety Instructions

I Earphones

Follow Traffic Safety Instructions

- Do not use the earphones while driving an automobile or riding a bicycle. It's not only dangerous, but also against the law.
- To avoid an accident, do not turn up the volume of the earphones too high while walking.

Protect your ears

- Do not turn up the volume too high. Doctors warn against prolonged exposure to high volume.
- Stop using the device or turn the volume down if you have ringing in your ears.

I Ambient operating conditions

- Ambient temperature : 5°C ~ 35°C (41°F ~ 95°F)
Humidity : 10 ~ 75%

I Environmental Information

- Follow local guidelines for waste disposal when discarding packages, batteries, and old electronic appliances.
- Your player is packaged with cardboard, polyethylene etc., and does not use any unnecessary materials.

ENG

Battery Charger Safety



CAUTION

Opening the case may result in electric shock.



The uninsulated parts inside the charger may cause electric shock. Please do not open the charger case for your safety.



Read the user manual to prevent problems while using the charger.

Warning

- Use the charger away from water sources to avoid fire or electric shock.

Caution

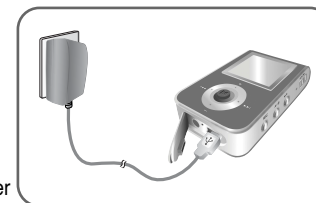
- To avoid electric shock, use the charger only with a power outlet that matches the shape of the converter's plug.
- Make sure that the charger's plug is inserted all the way into the outlet.

Charging the battery

The charger is supplied with your player.

Plug the charger into a wall outlet.

- ✱ When recharging is complete, "FULLY CHARGED" is shown in the display window.
- ✱ The unit can also be charged at low speed using the power supplied from your computer through the USB cable.
- ✱ Battery recharge time in normal operation is approximately 2 hours.



ENG

Caution

- To avoid the risk of fire, do not charge longer than 12 hours.
- Do not plug several devices into the same outlet.
- Do not use a rechargeable battery or charger that is defective.
- When using the rechargeable battery for the first time or after several months of non-use, fully charge it first.
- Overcharging will reduce the battery life.
- The rechargeable battery is a consumable item and its capacity will decrease gradually.
- To prolong the life of your battery, use the fully charged battery until it is completely discharged, and then fully charge it again before use. If you charge the battery that is not completely drained, the battery operating time will decrease. In this case, fully cycle (fully charge and then fully discharge) the battery several times.
- Do not let metallic objects, such as necklaces or coins, come into contact with the terminals (metallic parts) of the charger and the built-in rechargeable battery. A fire or electric shock may result.
- Do not touch the charger with wet hands.

Features

Features

ENG

65,000 Color LCD

- The 65,000 color LCD allows color display of image files.

MP3, WMA, Audio ASF, Secure WMA and Ogg Playback

- The player supports playback of MP3, WMA, Audio ASF, Secure WMA and Ogg(Ogg Vorbis)

※ OGG is a new audio compression format that is free, open and unpatented.
For more info, see www.vorbis.com

Removable Storage Device

- You can easily copy and paste files to the player using Windows Explorer.

Text and Image Viewer

- The player can be used as a text and image viewer to view saved e-books or pictures.

Direct MP3 Recording

- You can convert music from CDs, cassettes, and radio into MP3 files without a PC.

FM Reception

- Listening to an FM program is made easy with Auto Search and Frequency Memory functions.

SRS WOW Surround Sound

- The 3D surround(SRS) feature adds spaciousness to the sound.

USB 2.0 High Speed Data Transfer

- Maximum data speed transfer of 70 Mbps

Features

Upgradable

- You can upgrade the built-in programs when available.
Please check the home page (www.samsung.com) for upgrades.

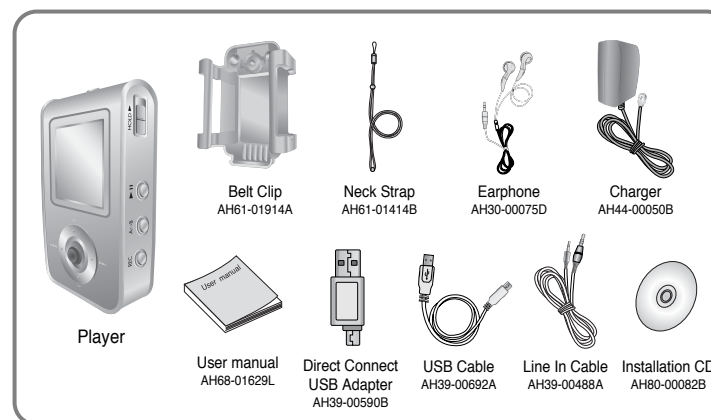
Built-in Rechargeable Li-polymer Battery

- The built-in rechargeable lithium battery provides up to 10 hours of play time.
✱ Time may vary depending on usage pattern.

Voice Recording Function

- You can make high quality voice recordings.

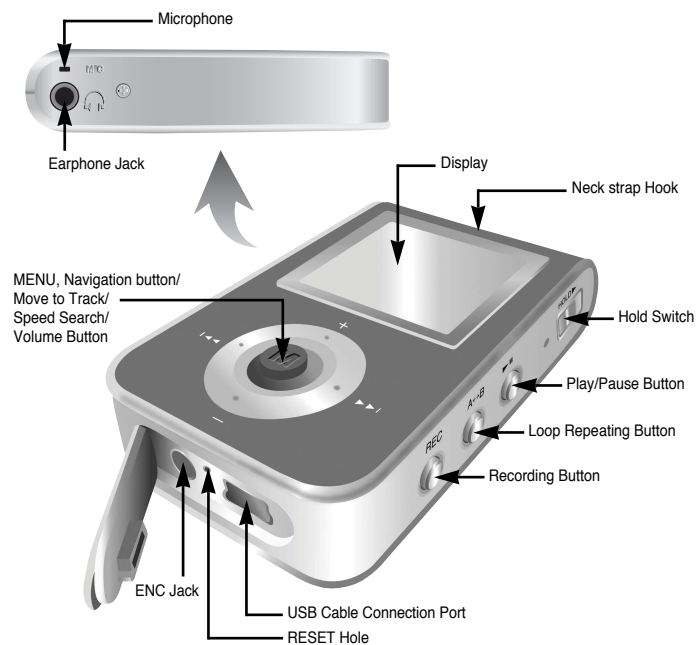
Components



Model	YP-T7 H	YP-T7 V	YP-T7 X	YP-T7 Z
Built-in memory	128MB	256MB	512MB	1GB

- The capacity of the useable built-in memory is less than indicated as the internal firmware uses part of the memory as well.
- The accessories' design is subject to change for the purpose of improvement, without notice.

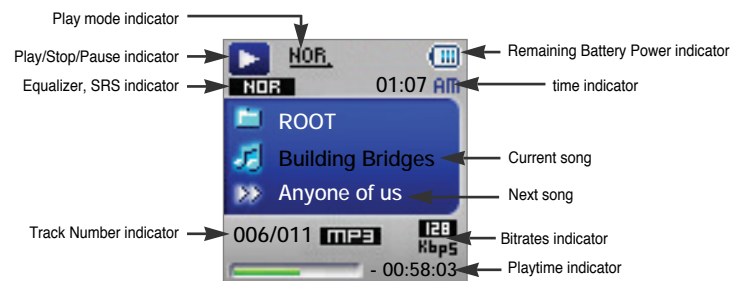
Location of Controls



Location of Controls

I Display

ENG



Connecting the player to your PC

► System Requirements.

The PC system must meet the following specifications:

- Pentium 200MHz or greater
- Windows 98 SE/ME/2000/XP
- 40MB of available hard disk space
- CD-ROM drive
- (double speed or greater)
- USB port (2.0) supported
- VGA graphic
- DirectX 8.0 or greater

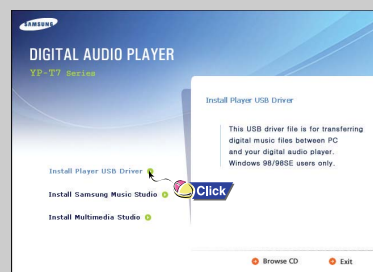
Note

- Log into your PC as an administrator (Main User) and install the supplied software (Music / Multimedia Studio) for Windows 2000 or XP. Otherwise, the software may not install properly.

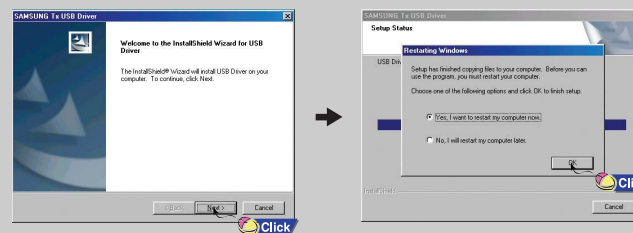
For Windows 98/98SE, install the USB driver prior to connecting the player to PC.

1 Installing software

1 Insert the Installation CD into the CD-ROM drive.
Select [Install Player USB Driver].



2 Follow the instructions in the window to complete the installation.



Continued...

ENG

Connecting the player to your PC

I Connecting the player to your PC with the USB cable

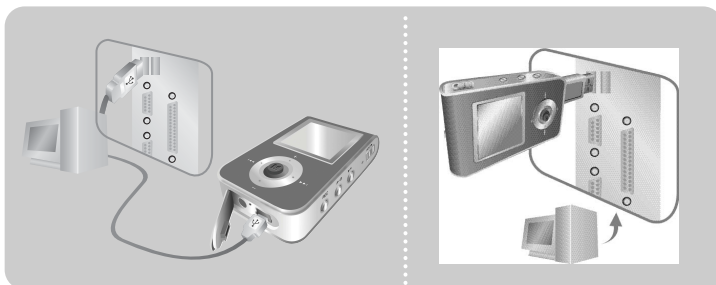
- 1 Connect the USB cable to the USB port on your computer.
- 2 Connect the other end of the USB cable to the USB cable connection port on the bottom of the player.
 - If you disconnect the USB cable from your PC while implementing a command or initializing during USB driver installation, your PC may not function correctly.



Note

- You can also connect the player to your PC with the Direct connect USB adapter.

- 3 The USB driver is installed with a message saying that it is searching for a new device. You may not see the display screen during installation. Go to the device manager to check that installation has been successfully completed.



Connecting the player to your PC

- 4 Upon installation of the USB driver "SAMSUNG YP-T7 USB Device" will appear in the [System Properties] → [Device Manager].

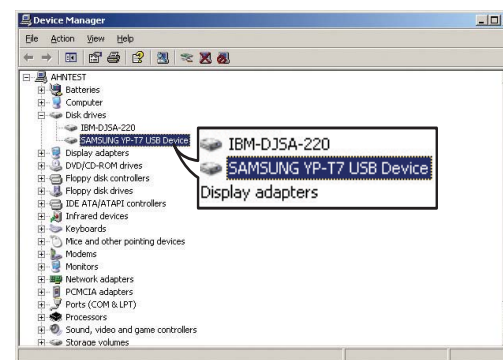
How to check if USB driver is properly installed

Windows 98:

Control Panel → System → Device Manager → Disk Drives → SAMSUNG YP-T7

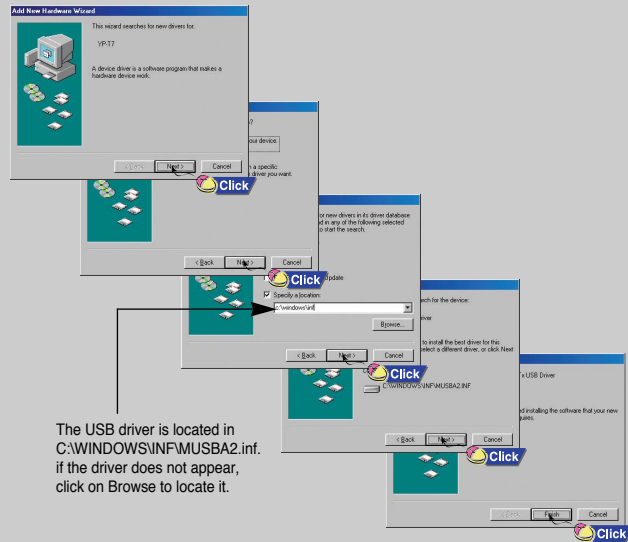
Windows 2000/XP:

Start → Settings → Control Panel → System → Hardware → Device Manager → Disk Drives → SAMSUNG YP-T7 USB Device



Manual installation of the USB Driver

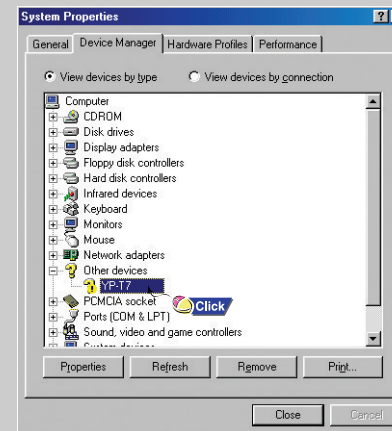
- 1 If the driver does not install automatically, follow the instructions below to install the USB driver manually.



18

Manual installation of the USB Driver

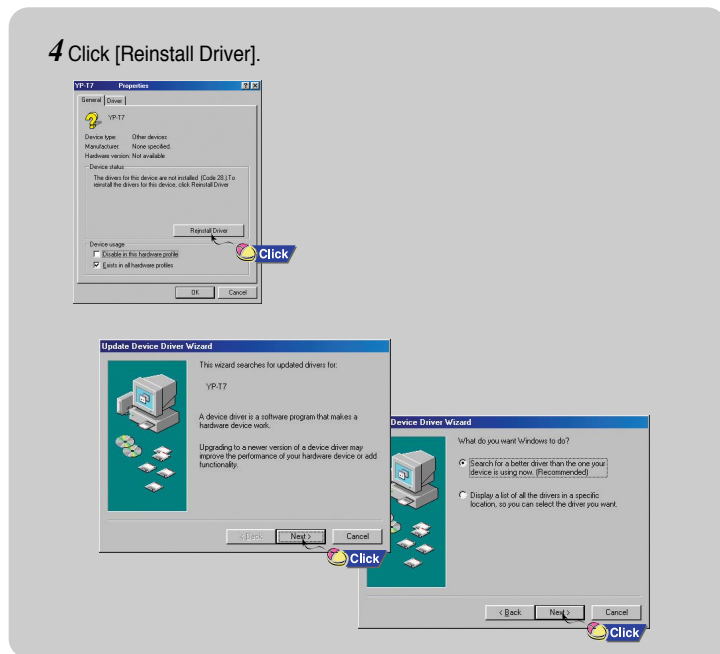
- 2 Select [Control Panel] → [System] → [Device Manager].
- 3 Click [YP-T7].



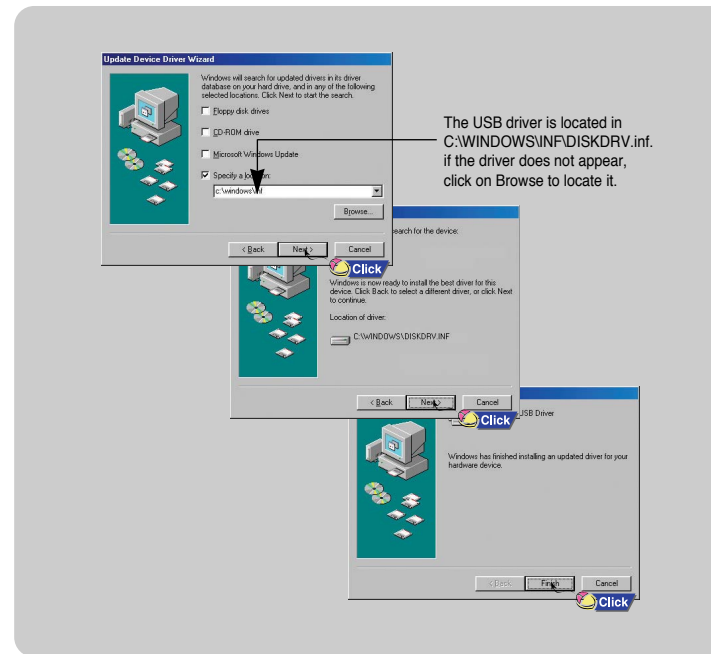
ENG

19

Manual installation of the USB Driver



Manual installation of the USB Driver

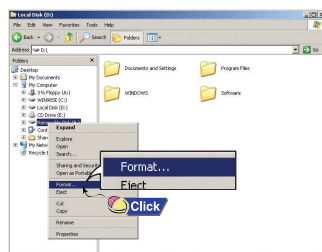


Using the removable storage(PC)

Before formatting can begin, you must connect your YP-T7 to your PC using the USB cable (see page 16).

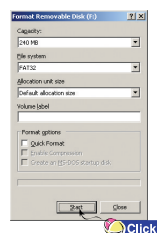
I Formatting on your PC

1 Select the removable disc icon and click the right mouse button to select [Format].



2 Press the [Start] button.

- All saved files will be formatted.
- You can change the name of removable disc by selecting [Volume label].



! Notice

- Care must be taken as formatted files can not be recovered.

I Downloading/Uploading files

1 Connect the player to your PC with the supplied USB cable.

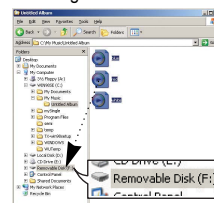
2 Open Windows Explorer on PC.

- Removable Disc is displayed in Windows Explorer.

Using the removable storage(PC)

3 Select the files to save. Drag and drop them into respective folders in the removable disc.

- Place music files in the removable disc, text files in the TEXT folder, and image files in the IMAGE folder.



! Notice

- Disconnecting the USB cable while downloading or uploading files may cause malfunction of the player.
- The music file order displayed in Windows Explorer may differ from the play order on your player.

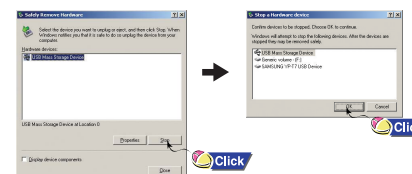
I Disconnecting the USB cable

After completing the file transfer, you must disconnect the cable in the following way:

1 Double-click on the green arrow in the taskbar on the bottom right of the window.



2 When the [Stop a Hardware device] message appears, press the [OK] button and disconnect the USB cable.



Transferring music files using Windows Media

1 Downloading Secure WMA Files

Make sure to download the Secure WMA file you purchased from a *pay site through Windows Media Player Version 9 or above and save it to a folder on your PC.

*pay site :

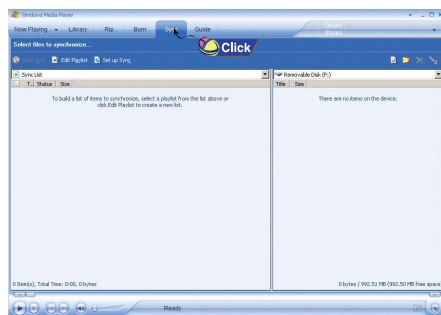
www.walmart.com, www.buymusic.com, www.musicnow.com, www.napster.com, etc.

1 Connect the player to PC.

2 Run the Windows Media Player10.

- Select [Start] → [Programs] → [Accessories] → [Entertainment] → [Windows Media Player10] in the desktop.

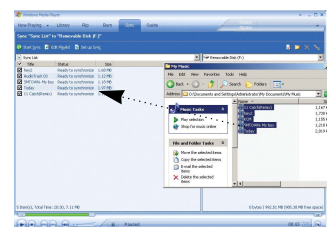
3 Select [Sync].



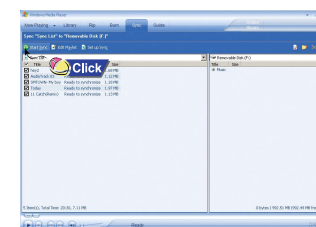
24

Transferring music files using Windows Media

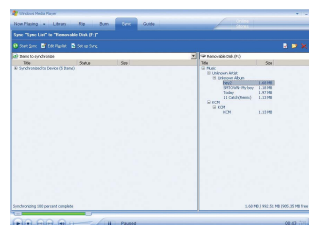
4 When the [Sync] window appears, select the file on your PC that you want to transfer to the player using Windows Explorer. Drag and drop the file to the left [Sync List] window



5 Press the  [Start Sync] button on the main screen.



6 You can check the transferred file in the right window.



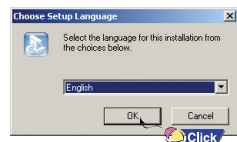
25

<#>

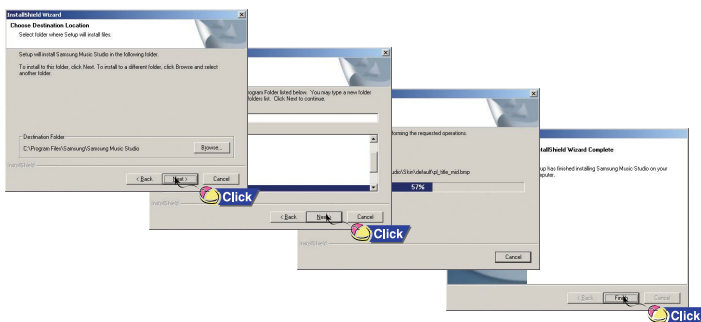
Installing Music Studio

Music Studio is a program that enables you to play back music files on your PC.

- 1 Insert the Installation CD into CD-ROM drive.
Select [Install Samsung Music Studio].
- 2 Select language



- 3 Follow the instructions in the window to complete the installation.
● Please refer to Help for more information on how to use Music Studio.

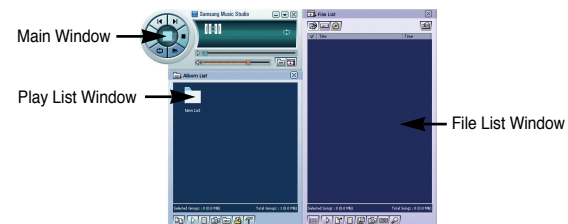


26

Using Music Studio

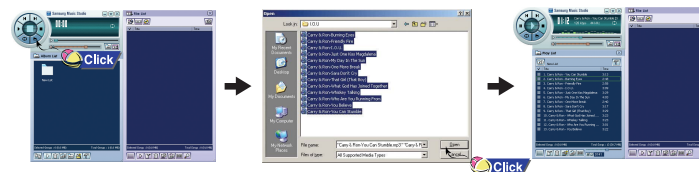
I Playing Music

- 1 Double click the Music Studio icon on your PC.



- 2 Click the [Open Files] button in the main window to open the [Open] dialog box and select the music files you want to play back. Then click the [Open] button.

- The Selected files are automatically played back.




27

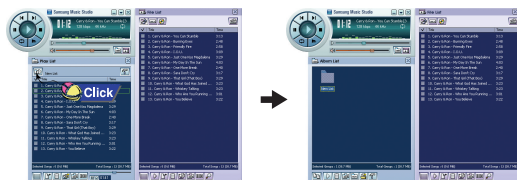
ENG

Using Music Studio

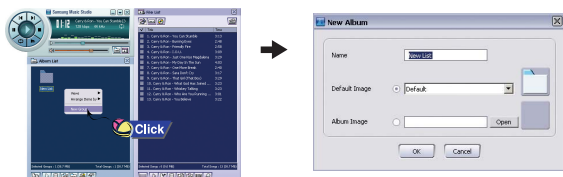
You can create an Album that will contain a group of your favorite songs for playback.

I Creating an Album

- 1 Double click the Music Studio icon on your PC.
- 2 Click the  [Album List] button in the Play List Window.
 - The Album List Window appears.




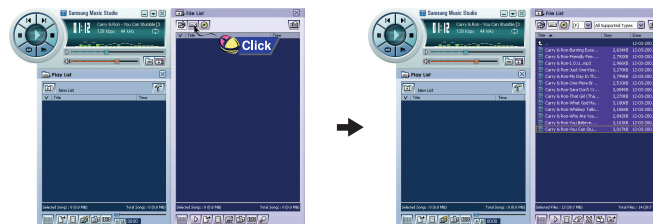
- 3 Click your right mouse button to select [New Group] which opens the [New Album] dialog box. Assign a new name and an image for the new album.
 - To add an Album image file to your album, click Open to the right of the Album image window and select a desired image from your PC.



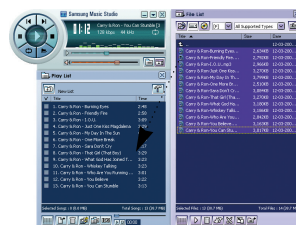
28

Using Music Studio


- 4 After creating the New Album, click the  [To HDD Mode] button in the File List Window to select music files stored in your computer.



- 5 Drag and drop the selected music files into the Play List Window.



Note

- To change the Name and image for an Album, click the  [Properties] button in the Play List Window. After bringing up the [Album Properties] window, assign the desired name and image and then press the [OK] button.

ENG


Continued...

29

Using Music Studio

You can convert CD Audio tracks to MP3 or WMA(Windows Media Audio) format by using Music Studio.

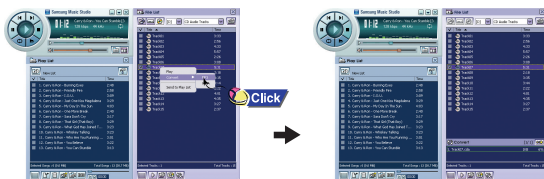
I Converting Music File Formats

- 1 Double click the Music Studio icon on your PC.
- 2 Insert an audio CD into your CD drive and click the  [To CD-ROM Mode] button in the File List Window.



- 3 After selecting the tracks to be converted, click with the right mouse button to choose the file format.

- The tracks are converted into the selected format.



Note

- Converted files are saved in the folder C:\My Music.

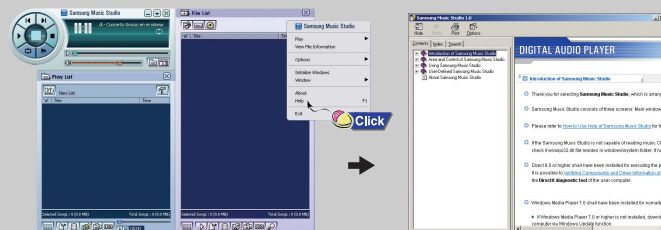
To View Help on Music Studio

Run Music Studio and press F1.

- Help will appear.

Move the arrow to the top of Music Studio and right click on the mouse.
The following selection window will appear.

- Click on Help and the Help window will appear.



Note

- Music recognition technology and related data are provided by Gracenote and Gracenote CDDB® Music Recognition ServiceSM.
- CDDB is a registered trademark of Gracenote. The Gracenote logo and logotype, the Gracenote CDDB logo and logotype, and the "Powered by Gracenote CDDB" logo are trademarks of Gracenote. Music Recognition Service and MRS are service marks of Gracenote.

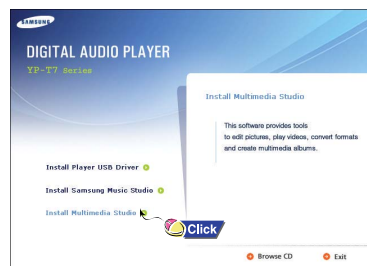
ENG

Installing Multimedia Studio

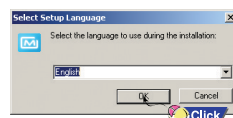
Installing Multimedia Studio

- Multimedia Studio is a program that supports image editing, video playback and format conversion, and multimedia album creation.

1 Insert the installation CD into the CD-ROM drive.
Select [Install Multimedia Studio].



2 Select language



3 Follow the instructions in the window to complete the installation.



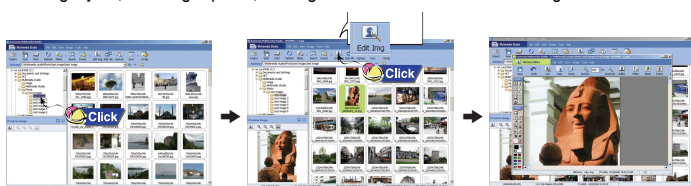
ENG

Using Multimedia Studio

- Run Multimedia Studio from on the Desktop.

Editing Images

- 1 Select the folder containing images to edit from the directory window at the upper left-hand section of Multimedia Studio.
 - The saved files will be displayed in the file list window on the right.
- 2 Select the image to edit.
 - The selected image will be displayed in the [Preview image] window.
- 3 Press the [Edit Img] button.
 - From the [Picture editor] window, you can perform functions like editing wallpaper images, editing layers, inserting clip arts, making frames and other various editing functions.



Note

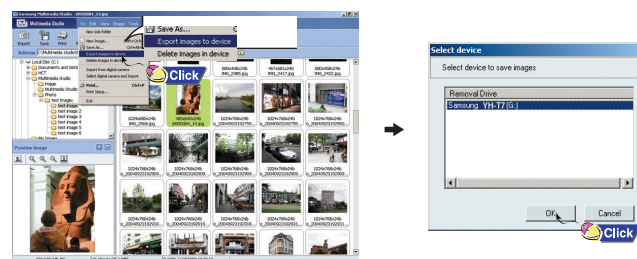
- Refer to Help for more information.

Using Multimedia Studio

- Files downloaded without using Multimedia Studio cannot be viewed on the screen.

Sending images

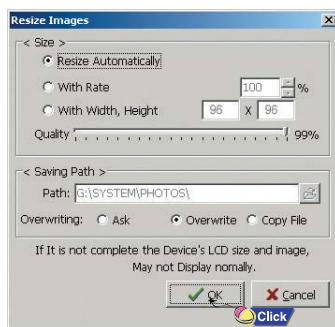
- 1 Connect the player to PC.
- 2 Select the image(s) to send to the player.
- 3 Select [File] → [Export images to device] at the top of the Multimedia Studio menu.
- 4 Select the device connected to PC from the [Select device] screen, and then press the [OK] button.



Using Multimedia Studio

5 Set the size and path of the image at the [Resize images] window and then click the [OK] button.

- The image will be sent to the selected device.
- The sent image can be viewed from [Image Viewer] in the menu.
- The optimal image size for viewing on the unit is 96 x 96.
Please adjust the image size if the image does not display correctly on the player.



Note

- Path refers to the location or folder where the converted image(s) will be saved to on your PC.
- Image files saved in the player can be deleted by selecting [File] → [Delete images in device].
- Refer to Help for more information.

Using Multimedia Studio

- The Multimedia Studio software allows you to capture a still frame from a video file and save it as a picture, then transfer it to the YP-T7.

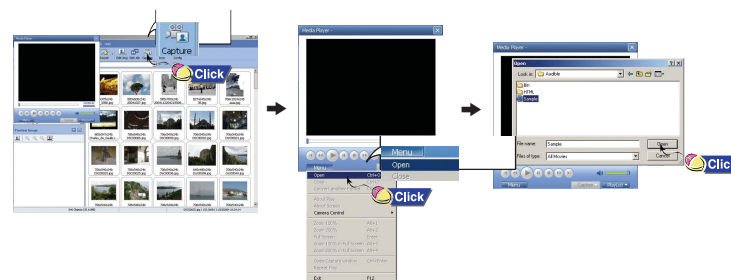
Capturing Video

1 Press the [Capture] button at the top of the Multimedia Studio menu.

- The Media Player screen will be displayed.

2 Click [Menu] → [Open] on your PC and select the video you want to play.

- The selected video will be played.



Using Multimedia Studio

3 Press the ① [Capture] button and then press the ② [Capture] button when the image you want to capture appears.

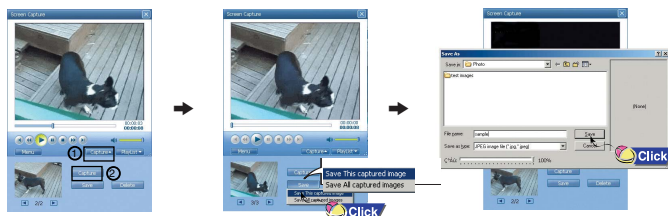
- The selected image will be captured.

4 Press the [Save] button.

- Save This captured image: saves the currently selected image.
- Save All captured images: saves all captured images.

5 Select the directory to save to from the [Save As] window and press the [Save] button.

- The selected image will be saved.



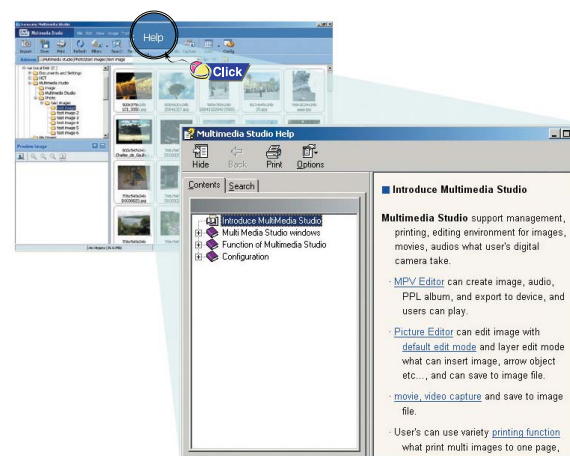
Note

- Video playback and conversion codecs are not provided. It is recommended that you use codecs of latest versions.
- Refer to [Help] for more detailed information
- The player will only play back still images. It will not play back video.

To View Help on Multimedia Studio

Run Multimedia Studio and press the Help button at the top of the screen.

- Help will be displayed.



Playing Music and Turning Off the Device

Make sure the player is fully charged and the earphones are connected.

I Turning Power On and Off

Power On : Press the ►|| button to turn on the power.

Power Off : Press and hold the ►|| button to turn off the power.

I Playing Music (Power On)

Press the ►|| button.

- Playback starts automatically.

I Pausing Music (Power Off)

Press the ►|| button to pause playback.

- If no buttons are pressed within 10 seconds (or a custom set Power off time you selected), the player automatically powers off.
- While in Pause mode, press the ►|| button again to resume playback.



I Adjusting the Volume

Push the "M" button up or down to adjust the volume from 00 to 40.



Note

- If the file name is not displayed correctly, move to [Settings] → [Display] → [Language] and then change the language setting.
 - WMA files can only be played as music files with a compression rate of 48Kbps-192Kbps.
 - The power off time can be set in the menu.(refer to page 66)
 - The default volume is set at 25.
- If the player is reset after having adjusted the volume to above 25, music is played at the default volume again.

HOLD Function

In Hold mode, all buttons are disabled. This is useful when using the player and walking, jogging etc.

Slide the  switch in the direction of the arrow.

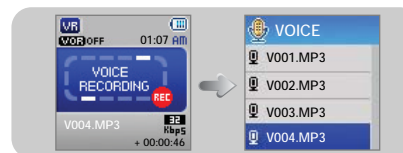
- When the button is pressed, the "HOLD" message will appear on the display.

ENG

Recording Voice

* To move to other modes from the Voice mode, refer to page 47 "Changing Mode".

- 1 Press and hold the REC button to start voice recording.
- 2 Press the REC button again to stop the recording and save the voice file.



Note

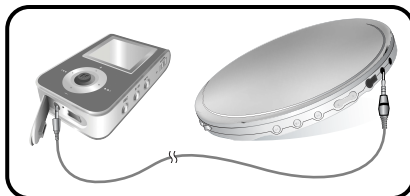
- The files are recorded in the order of V001,V002....., and saved as MP3 files in the VOICE folder after recording.
- If the Memory is full, Voice Recording will be disabled automatically.
- Voice Recording does not work in FM Mode or when the Line In cable is connected.
- Beeps are disabled while recording.
- Recording is allowed only when there is 1MB or more of free memory.

Recording MP3s

* To move to other modes from the LINE_REC mode, refer to page 47 "Changing Mode"

1 Connect the Audio Output port on the external audio source (or the Line Out port) to the ENC port on the device with the Line cable.

- Press the play button on the external device to play the music to record.



2 Press and hold the REC button to start MP3 recording.

- If the ►|| button is pressed, recording is paused and if the ►|| button is pressed again, the recording resumes.

3 If the REC button is pressed during recording, the recording stops and an MP3 file is created.

- The files are recoded in the order of L001, L002.... and saved as MP3 file in LINE_REC folder after recording.

Note

- Bit Rates can be set within the range of 32Kbps~192Kbps.
- Beeps are disabled while recording.
- Recording is allowed only when there are 1MB or more of free memory .

Notice

- Do not disconnect the Line cable during Recording.
- If the battery is not sufficiently charged, the player will not completely encode the file.
- Adjust the volume of the external audio source to a suitable level and recode it. If the volume level is too high, the sound quality may be poor.

Searching for Music/Voice Files

► To search for specific parts during play

- Push and hold the "M" button left or right during playback to search for a specific section of the music file you want to listen to.
- Release the "M" button to resume play normally.

► To change tracks during play

- Push the "M" button to the ►| position briefly during playback to play the next track.
- Push the "M" button to the |◀ position briefly within 3 seconds after playback starts, to move to and play the previous track. Push the "M" button to the |◀ position briefly after 3 seconds to play the current track from the beginning.

► To change tracks when stopped/paused

- Push the "M" button left or right in stop/pause mode to move to the previous/next track.

Note

- VBR(Variable Bit Rate) file: A file that constantly changes the compression rate according to the type of sounds, such as their pitch, in the file.
- When playing a VBR file, you cannot move to and play the previous track even if you push the "M" button to the |◀ position within 3 seconds after playback starts.
- Files that were downloaded in MP2 or MP1 and had their file extension changed to MP3 may not play.

Loop Repeating

► Starting Point

While playing music files, press the A↔B button briefly at the beginning of the loop you want to set. A↔ appears in the display.



► Ending Point

Press the A↔B button briefly again to set the end of the loop. A↔B appears in the display. The loop is played repeatedly.



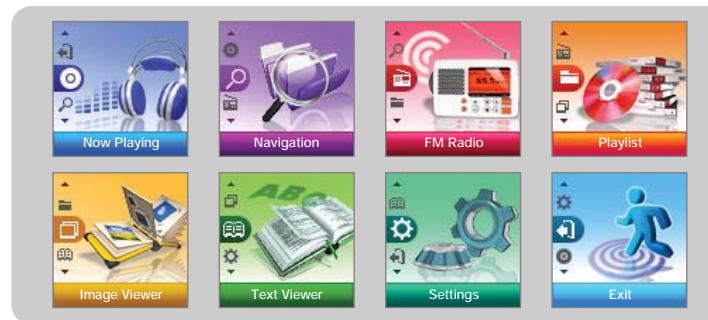
Note

- Press the A↔B button briefly to cancel the loop.
- Loop Repeat is automatically released if you Speed Search with ⏮, ⏭.

MENU Options

Press and hold the "M" button to switch to MENU mode.

Use ⏮, ⏭ to move and press the "M" button briefly to select the menu you want.



- Now playing : To check the file currently playing.
- Navigation : To move to Navigation Mode and browse files and folders.
- FM Radio : To listen to FM radio.
- Playlist : To play back only the files you want.
- Image Viewer : To view image files.
- Text Viewer : To read text files.
- Settings : To set the functions.
- Exit : To exit MENU.

Note

- Menu mode will be cancelled if no buttons are pressed within 10 seconds.

ENG

Using Navigation

You can easily search for files or switch modes using the Navigation function.

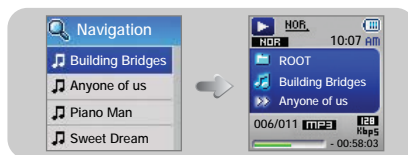
1 Press the “M” button to enter Navigation mode (except if you are in FM radio mode), or press and hold the “M” button to move to Menu and then select Navigation.

2 Select the file or folder that you want to play.

- **⏮**: To move to a higher-level folder.
- **⏭**: To move to a lower-level folder.
- **⏮**, **⏭**: To move to a file or folder in the same directory.
- **M**: To move to the next folder down. When there is no lower folder, the selected file will be designated as part of the playlist.

3 Press the **▶||** button.

- The selected file will be played.



Note

- Press and hold the “M” button in Navigation mode to exit the Navigation mode.

Using Navigation

I Changing Mode

You can change from mode to another.

The example below shows how to change from Voice to Music mode.

1 Press the “M” button in the Voice mode.

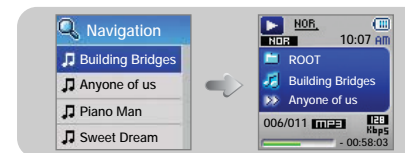


2 Use **⏮** to move to the upper folder.



3 Use **⏮**, **⏭** to move to the music file you want and press the **▶||** button.

- The selected file will be played.



Note

- To change to the FM mode, refer to “Menu Options”.

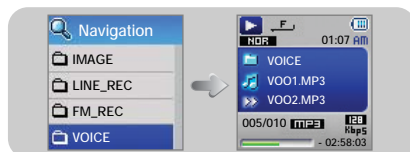
Using Navigation

Setting Playlist

I Playing/Exiting Folder

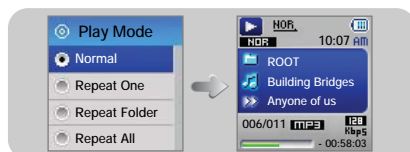
► Playing Folder

- 1 Press the "M" button to move to the Navigation mode.
- 2 Use **←**, **→** to move to the folder you want and press the **▶** button.
 - When " " appears, the selected folder will be played.



► Exiting Folder Play

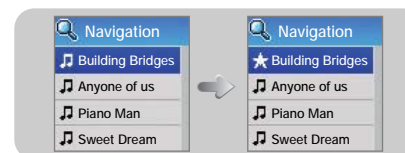
- 1 Press and hold the "M" button to move to Menu.
- 2 Select Settings → Play Mode.
- 3 Use **←**, **→** to move to Normal and press the "M" button.
 - Folder play will be exited.



48

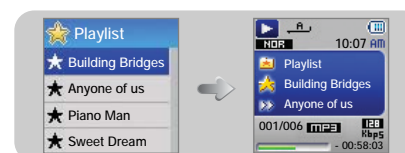
I Setting Playlist

- Move to the file you want in Navigation mode and press the "M" button.
 - The selected file will be marked.
 - To exit the playlist setting, move to the marked file in Navigation mode and press the "M" button again.



I Playing Playlist

- 1 Select Playlist in the menu.
 - The playlist you set will be displayed.
- 2 Move to the file you want to play and press the **▶** button.
 - "★" mark appears and the selected file will be played.



49

ENG

FM Radio Settings

1 Select FM Radio in the menu. (refer to "MENU Option")



2 In the FM Radio menu, use **-**, **+** to move to the function you want, and then press the "M" button to select.



Note

- Mono and stereo are automatically selected.

FM Radio Settings

I Listening to FM Radio

1 Select FM Radio → Normal.

2 Use **◀▶** to move to the frequency you want.

- Manual Search : Push **◀▶** to change the frequency up or down.
- Automatic Search : Push and hold **◀▶** to automatically search for receiving frequencies.



ENG

Note

- Press and hold the "M" to return to the FM Radio menu screen.

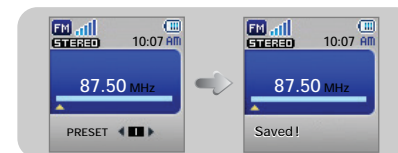
I Manual Storage of a Frequency

1 Select FM Radio → Normal.

2 Use **◀▶** to move to the frequency to save, and then press the "M" button.

3 Use **◀▶** to select the number you want to assign to save the frequency, and then press the "M" button.

- The selected frequency will be saved.



FM Radio Settings

I Searching Stored Frequencies

- 1 Select FM Radio → Preset.
- 2 Use **◀▶** to move to the desired frequency.

I Automatic Storage of a Frequency

Select FM Radio → Auto Preset.

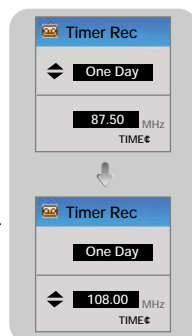
- Frequencies within the range of 87.5MHz to 108.0MHz are automatically selected and stored.
- Frequencies are automatically stored, starting from 1.



- You can store up to 20 frequencies.

I Timer Rec

- 1 Select FM Radio → Timer Rec
- 2 Use **−, +** to select Off, One Day, or Every Day and then press the **▶▶** button.
 - Select One Day to make a one-time recording.
 - Select Every Day to make a recording at the same time everyday.
- 3 Use **−, +** to select a frequency to record and then press the **▶▶** button.



- 4 Use **−, +** to set the FM record start time and record finish time.

- 5 After setting Timer Rec, move to OK, and then press the “M” button.



- The player must be Off for a Timer Recording to occur.
The player will automatically turn on and record at the time you specified.

I Preset Delete

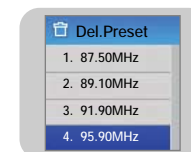
- 1 Select FM Radio → Del.Preset
- 2 After moving to the PRESET number you want to delete, press the “M” button.
 - The saved Preset number will be deleted.



ENG

I FM Region

- 1 Select FM Radio → FM Region
- 2 Use **−, +** to select FM Tuner region, and then press the “M” button.
 - Worldwide : Search FM frequencies between 87.5MHz to 108.00MHz in increments of 50 KHz.
 - US : Search FM frequencies between 87.5MHz to 108.0MHz in increments of 100 KHz.
 - Japan : Search FM frequencies between 76.0MHz to 108.0MHz in increments of 100 KHz.



FM Radio Settings

I FM Level

1 Select FM Radio → FM Level.

2 Use **—**, **+** to select FM Tuner Sensitivity, and then press the “M” button.

- The higher the FM Tuner Sensitivity, the more stations it can receive.
- **High** → **Middle** → **Low**



FM Recording

1 Press and hold the REC button during FM reception.

- Recording of the currently transmitted FM broadcast begins.

2 Press the REC button again.

- A file is created and the Recording stops.
- Files are recorded in the order F001, F002, F003... and saved as MP3 files in FM_REC folder.



Note

- Beeps are disabled while recording.
- Recording is allowed only when there is 1MB or more of free memory.

Viewing Image

You can select an image file to view while listening to the music.

1 Select Image Viewer in the menu. (refer to “MENU Options”)



2 Use **—**, **+** to move to the image you want to view, and then press the “M” button.

- The selected image file will be displayed.
- Press the “M” button to return to the [Image Viewer] screen.



Note

- The optimal image size for the unit is 96X96. Images larger than 800X600 may take longer to display. If the image size is too large, use Multimedia Studio to adjust the size and resend it to the player. (see page 35).
- If an image file is not displayed on the screen, resend it using Multimedia Studio to display it correctly.

Viewing Text

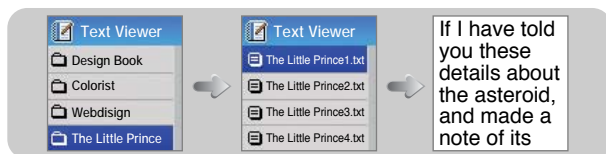
- Text Viewer allows you to read text files that were created on your PC. Text files must have a .txt extension to be viewed by Text Viewer.
- You can select an text file to view while listening to the music.

1 Select Text Viewer in the menu. (refer to "MENU Options")



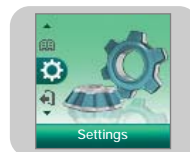
2 Use \leftarrow , \rightarrow to move to the text you want to read, and then press the "M" button.

- The selected text file will be displayed.
- Press the "M" button to return to the [Text Viewer] screen.



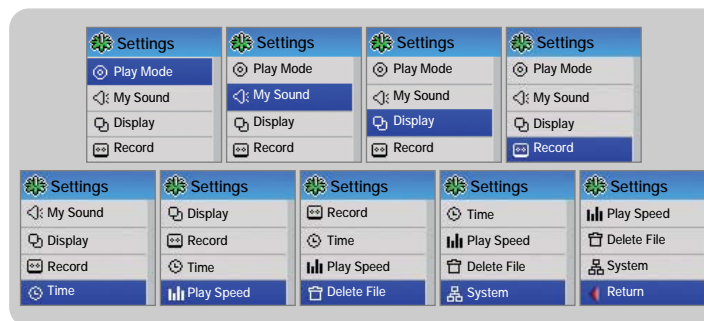
Setting the Advanced Functions

1 Select Settings in the menu. (refer to "MENU Options")



2 In Settings, use \leftarrow , \rightarrow to move to the function you want and press the "M" button to select.

- To move to a previous menu, use \leftarrow or select Return.

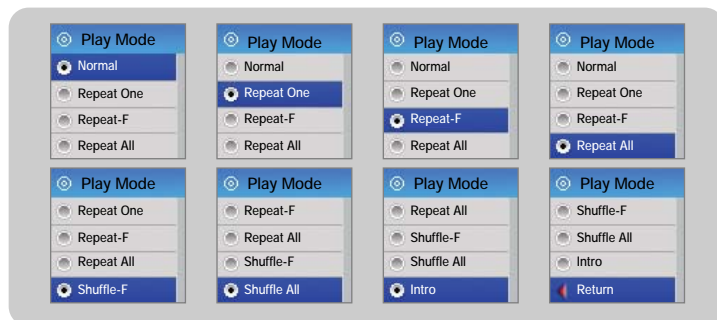


ENG

Selecting the Play mode

1 Press and hold the “M” Button. Select Settings → Play Mode.

2 In Play mode, use **←**, **→** to move to the mode you want and press the “M” button to select.



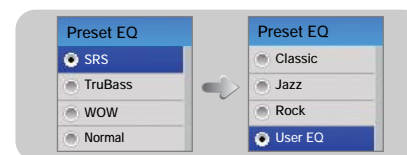
- Normal : To play all the files in order one time.
- Repeat One : To repeat one file.
- Repeat-F : To repeat the current folder.
- Repeat All : To repeat all files.
- Shuffle-F : To play files in the folder at random.
- Shuffle All : To play files at random.
- Intro : To play the first few seconds of a music file. (refer to page 69)
- Return : To move to a previous menu.

Sound Settings

Press and hold the “M” button. Select Settings → My Sound.

Preset EQ

- Use **←**, **→** to move to the sound mode you want and then press the “M” button.
- **SRS** → **TruBass** → **WOW** → **Normal** → **Classic** → **Jazz** → **Rock** → **User EQ**
- Select User EQ to set the EQ as desired.
- **SRS** : You will hear 3D Stereo sound.
- **TruBass** : This is a bass boost feature that adds fullness to the sound.
- **WOW** : Consists of SRS and TruBass functions. Provides rich bass and 3D surround sound at the same time.



Note

- **SRS** is a trademark of SRS Labs, Inc.
- WOW technology is incorporated under license from SRS labs, Inc..
- Please adjust the volume to a suitable level, as the volume may increase in the SRS setting.
- This unit supports sampling frequencies of 32KHz, 44.1KHz or 48KHz.

Sound Settings

Sound Settings

Press and hold the "M" button. Select Settings → My Sound.

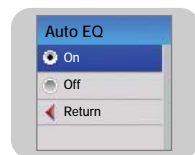
I Bass Booster

- Use **—**, **+** to select Bass Booster On or Off, and then press the "M" button.
- Bass Booster function is applied only when you select Normal, Classic, Jazz or Rock in the Preset EQ.
- On: The bass is boosted.
- Off: Music is played back normally.



I Auto EQ

- Use **—**, **+** to select Auto EQ On or Off, and then press the "M" button.
- On: Sound effects are automatically selected from Classic, Rock, Jazz, SRS, TruBass, and WOW, according to the music file's ID3 tag information.
- Off: Music file is played in the current Preset EQ mode chosen.



Note

- What is an ID3 Tag ?

This is what is attached to an MP3 to carry information relevant to the file, such as the title, artist, album, year, genre and a comment field.



Note

- Auto EQ Table

ID3 Tag Genre	Auto EQ	ID3 Tag Genre	Auto EQ
Blues	JAZZ	Classic Rock	TruBass
Country	JAZZ	Dance	JAZZ
Disco	SRS	Funk	TruBass
Hip-Hop	TruBass	Jazz	JAZZ
Metal	TruBass	New Age	JAZZ
Pop	JAZZ	R&B	JAZZ
Rap	NORMAL	Reggae	JAZZ
Rock	ROCK	Techno	WOW
Industrial	NORMAL	Soundtrack	NORMAL
Euro-Techno	TruBass	Trip-Hop	TruBass
Vocal	NORMAL	Jazz + Funk	JAZZ
Fusion	JAZZ	Trance	SRS
Classical	CLASSIC	House	JAZZ
Gospel	SRS	Soul	SRS
Musical	SRS	Rock & Roll	TruBass
Chorus	SRS	Acoustic	NORMAL
Symphonic Rock	ROCK	Gothic	ROCK
Celtic	CLASSIC	AvantGarde	CLASSIC

ENG

Display Settings

Press and hold the "M" button. Select Settings → Display

I WOW Set

- Use **—, +** to select the SRS function you want, and then press the "M" button.
- The SRS function is applied only when you select the SRS, TruBass or WOW in the Preset EQ.

● SRS :

You will hear 3D Stereo sound.
Use **—, +** to adjust SRS from 0 to 10.



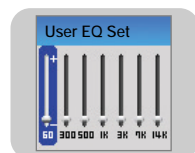
● TruBass :

This is a bass boost feature that adds fullness to the sound.
Use **—, +** to adjust TruBass from 0 to 10.



I User EQ Set

- You can adjust the EQ to your preference in the User EQ Set.
 - Use **◀, ▶** to move to right or left and use **—, +** to adjust the level of the selected frequency.
- Press the "M" button after completing the setting.



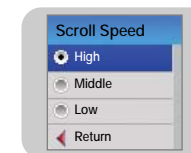
Display Settings

Press and hold the "M" button. Select Settings → Display

► Scroll

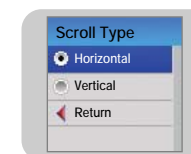
[Scroll Speed]

- Use **—, +** to set the scroll speed to adjust the speed of the track title movement.
- High → Middle → Low.



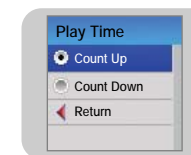
[Scroll Type]

- Use **—, +** to select the scroll type.
- Horizontal : Music title moves horizontally.
- Vertical : Music title moves vertically.



► Play Time

- Use **—, +** to select the play time.
- Count Up : Current playback time is displayed.
- Count Down : Remaining time from total playback time is displayed.

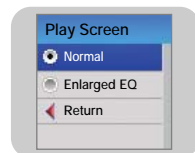


Display Settings

Press and hold the "M" button. Select Settings → Display

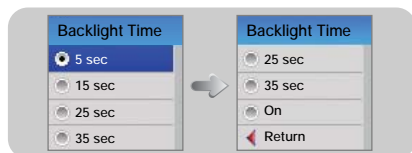
► Play Screen

- Use **—, +** to select the play screen.
- Normal : Playback screen is displayed as initially selected.
- Enlarged EQ : Equalizer screen is displayed during playback.



► Backlight Time

- Use **—, +** to set the Backlight Time from 5 to 35 seconds.
- When set to On, the Light stays on continuously.



► Contrast

- Use **—, +** to set the Contrast level of the display from 0 to 10.



Display Settings

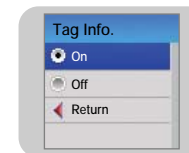
Press and hold the "M" button. Select Settings → Display

► Tag Info.

- Use **—, +** to select Tag Info. On or Off.
- On: The title and artist contained in the file tag information are displayed during playback.
- Off: Display the name of music file.

Note

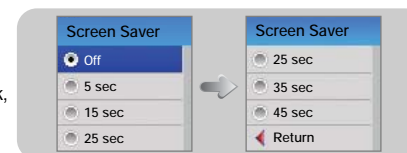
- What is an ID3 Tag ?
This is what is attached to an MP3 to carry information relevant to the file, such as the title, artist, album, year, genre and a comment field.



ENG

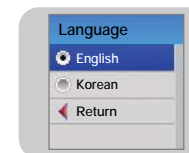
► Screen Saver

- Use **—, +** to select time for the Screen Saver from 5 to 45 seconds.
- If no button is pressed after playback, the screen will automatically display the screen saver.
- When set to Off, the normal playback screen displays.



► Language

- Use **—, +** to select the language for displaying Tag information and menu.
- English → Korean



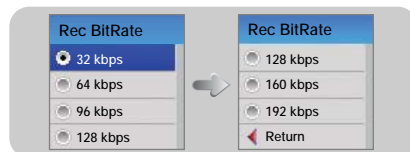
65

Record Settings

Press and hold the "M" button. Select Settings → Record.

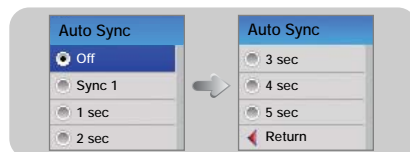
► Rec BitRate

- Use **—**, **+** to set the recording bit rate.
- When recording music into an MP3 file, you can select one of the following recording bit rates: 32Kbps, 48Kbps, 64Kbps, 96Kbps and 128Kbps.
- Selecting a higher bit rate results in better quality sound, but uses more memory space.



► Auto Sync

- Use **—**, **+** to set the Auto Sync Time from 1 to 5 seconds.
- Auto Sync Time is a function for separating and saving MP3 files when there is no sound for a set time during MP3 recording.
- In SYNC 1 setting, recording stops and it moves to Music Mode when there is no sound for over 2 seconds during recording.
- If Auto Sync Time is set to Off, recording keeps going even if there is no sound, and then it is saved as one file.



66

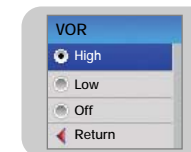
Record Settings

Press and hold the "M" button. Select Settings → Record

► VOR

VOR is a voice activated recording function where recording pauses when the sound is not loud or too soft.

- Use **—**, **+** to select VOR High or Low.
- High: Select this to record voice outdoors. Recording stops if the voice is not loud.
- Low: Select this to record voice indoors. Recording stops if the voice is too soft.
- Off: Recording continues regardless of voice volume.



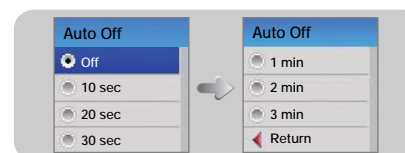
ENG

Time Settings

Press and hold the "M" button. Select Settings → Time

► Auto Off

- Use **—**, **+** to set the Auto Off time from 10 seconds to 3 minutes.
- If no button is pressed after play stops, the player will automatically turn off after the time you set.
- When Auto Off is set to Off, the function is disabled.



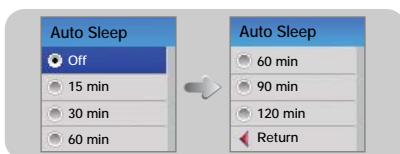
67

Time Settings

Press and hold the "M" button. Select Settings → Time

► Auto Sleep

- Use **—**, **+** to set the sleep time from 15 to 120 minutes.
- The player will automatically turn off after the time you set.
- When Auto sleep set to Off, the function is disabled.



► Alarm Set

1. Use **—**, **+** to set the Alarm Set time, and then press the **▶▶** button to move to the next stage.
2. After setting Alarm, move to OK and then press the "M" button.
 - The player automatically powers on after the time you set.



Note

- The player must be Off for Alarm to occur.



► Watch Set

Use the Watch Set function to set the current time.

1. Use **—**, **+** to set the clock time, and then press the **▶▶** button to move to the next stage.
2. After setting the current time, move to OK and then press the "M" button.
 - The current time will be displayed.

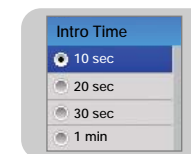


Time Settings

Press and hold the "M" button. Select Settings → Time

► Intro Time

- Use **—**, **+** to set the Intro time to 10, 20, 30 seconds or 1 minute.
- When you select the Intro function (Press and hold "M" button. Select Settings → Play mode → Intro), the beginning of all files will be played back for the seconds you set.



ENG

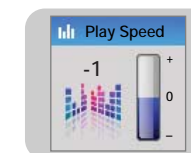
Play Speed Settings

This functions allows you to set the music files to play at variable speeds.

1 Select Settings → Play Speed.

2 Use **—**, **+** to move to the desired Play Speed, and then press the "M" button.

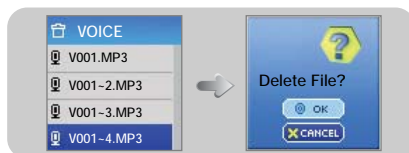
- The higher the number, the faster the speed of play, and the lower the number, the slower the speed of play.



Deleting File

1 Select Settings → Delete File.

2 Use **—**, **+** to move to the file you want to delete and then press the “M” button.



3 Use **—**, **+** to move to OK and then press the “M” button.

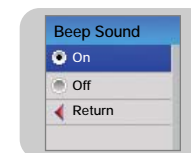
- The selected file will be deleted.

Setting the System

Press and hold the “M” button. Select Settings → System.

► Beep Sound

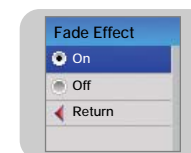
- Use **—**, **+** to select Beep Sound On or Off.
- On: The unit beeps when the buttons are pressed.
- Off: The unit does not beep.



ENG

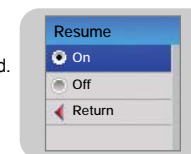
► Fade Effect

- Use **—**, **+** to select Fade Effect On or Off.
- On: Volume gradually increases when playback starts.
- Off: Music is played at the volume you set.



► Resume

- Use **—**, **+** to select Resume On or Off.
- On: Play back will resume from the point it was previously stopped.
- Off: Play back will resume from the beginning of the file/track that was playing when stopped.



Setting the System

MENU Table

Press and hold the "M" button. Select Settings → System.

► Default Set

- Use **←**, **→** to select OK or CANCEL.
- OK : All selected settings will be restored to the default settings.

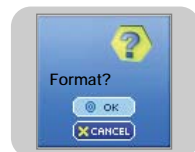


► Format

- Use **←**, **→** to select OK or CANCEL.
- OK : Memory is formatted and all saved files are deleted.

Note

- Formatting in the menu rather than on a PC is recommended.

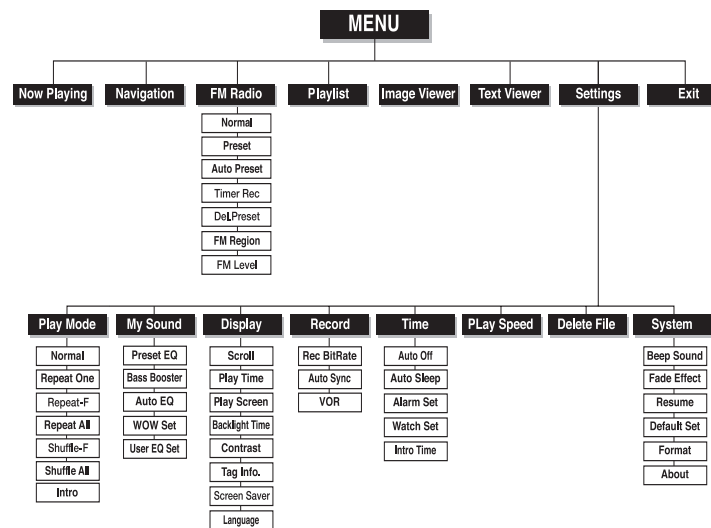
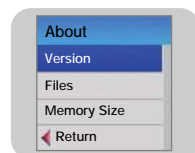


► About

- If you select About, you can check the software version information, total number of tracks and memory capacity.

Note

- Go to samsung.com for software updates.



ENG

- Use the "M" button to move and select.

Troubleshooting

The software doesn't work

- Refer to the System Requirements

The player does not work and the LCD displays nothing.

- Push the RESET button.
- Plug the charger into an outlet.

In PLAY mode, music is not played after pressing the ►|| button

- Check to see if MP3 or WMA files are saved in the built-in memory.
- Check to see if the HOLD button is locked.

Files cannot be downloaded.

- Check to see if the driver is installed correctly in the computer.
- Check the connection between the player and PC.
- Operating system limits the number of files you can save.
Please save your music files by creating a subfolder.
- Check if the memory is full.

Backlight does not work.

- Check the backlight setup.
- When the battery power is low, the backlight will go out.

The buttons do not work.

- Check setting of Hold switch.
- Push the RESET button.

Troubleshooting

ENG

The player keeps turning off.

- In Stop mode, the power is automatically turned off (changes depending on settings).
- Check to see if there are files saved in it.

LCD window is dark

- Check Contrast

The file name is not displayed correctly.

- Move to [Settings] → [Display] → [Language] in the Menu and then change the language setting.

There is a file saved in the player, but "No File" appears in the screen.

- After checking whether the folder is played, use the Navigation function to change the folder.
- Image files and text files are not displayed in Navigation Mode.

I cannot properly connect the player to the PC.

- Win98 : try to connect again after installing Driver.
- WinME : remove the Driver program and press Start in the desktop to execute Windows Update. After selecting important update and service pack, execute update all.
- Win2000/XP : Try to connect it again after rebooting PC.

Specifications

Model	YP-T7
Built-in Memory capacity	128MB(YP-T7 H), 256MB(YP-T7 V), 512MB(YP-T7 X), 1GB(YP-T7 Z)
Voltage	3.7V (Li-polymer)
Playing time	lasts up to 10hours (MP3 128Kbps, Vol level 20)
Dimensions/Weight	1.46" X 0.52" X 2.44" / 1.25 oz
Case	Magnesium/Plastic/Aluminum
Noise Ratio	90dB with 20KHz
Earphones Jack Output Power	10mW/CH (16Ω)
Output Frequency Range	20Hz~20KHz
Operating Temperature Range	-5 ~ +35°C(23~95°F)
FM Frequency	87.5 ~ 108.0 MHz
FM Signal to Noise Ratio	45dB
FM T.H.D	1%
FM Useable Sensitivity	10dB
File Support	MPEG1/2/2.5 LAYER 3(8Kbps ~ 320Kbps, 8KHz ~ 48KHz) MPEG1 LAYER 2(32Kbps ~ 384Kbps, 32KHz,44.1KHz,48KHz) WMA,ASF(Audio) (48Kbps ~ 192Kbps, 8KHz ~ 44.1KHz), Ogg ISO/IEC 10918-1 (JPEG), Annex F - Sequential DCT-based mode of operation

Specifications

The product unit accompanying this user manual is licensed under certain intellectual property rights of certain third parties. In particular, this product is licensed under the following US patents : 5,991,715, 5,740,317, 4,972,484, 5,214,678, 5,323,396, 5,539,829, 5,606,618, 5,530,655, 5,777,992, 6,289,308, 5,610,985, 5,481,643, 5,544,247, 5,960,037, 6,023,490, 5,878,080, and under US Published Patent Application No. 2001-44713-A1.

This license is limited to private non-commercial use by end-user consumers for licensed contents. No rights are granted for commercial use. The license does not cover any product unit other than this product unit and the license does not extend to any unlicensed product unit or process conforming to ISO/IEC 11172-3 or ISO/IEC 13818-3 used or sold in combination with this product unit. The license only covers the use of this product unit to encode and/or decode audio files conforming to the ISO/IEC 11172-3 or ISO/IEC 13818-3. No rights are granted under this license for product features or functions that do not conform to the ISO/IEC 11172-3 or ISO/IEC 13818-3.

ENG

Safety Information

FCC

This device complies with part 15 of the FCC Rules. Operation is subject to the following two conditions:

(1) This device may not cause harmful interference, and (2) this device must accept any interference received, including interference that may cause undesired operation.

Caution: Any changes or modifications in construction of this device which are not expressly approved by the party responsible for compliance could void the user's authority to operate the equipment

Note: This equipment has been tested and found to comply with the limits for a Class B digital device, pursuant to part 15 of the FCC Rules. These limits are designed to provide reasonable protection against harmful interference in a residential installation. This equipment generates, uses and can radiate radio frequency energy and, if not installed and used in accordance with the instructions, may cause harmful interference to radio communications. However, there is no guarantee that interference will not occur in a particular installation.

If this equipment does cause harmful interference to radio or television reception, which can be determined by turning the equipment off and on, the user is encouraged to try to correct the interference by one or more of the following measures:

- ◆ Reorient or relocate the receiving antenna.
- ◆ Increase the separation between the equipment and receiver.
- ◆ Connect the equipment to an outlet on a circuit different from that to which the receiver is connected.
- ◆ Consult the dealer or an experienced radio/TV technician for help.

FCC

Any changes or modifications not expressly approved by the grantee of this device could void the user's authority to operate the device.

Compliance

This product conforms to the following Council Directive:

- ◆ Directive 89/336/EEC, 92/31/EEC(EMC)

Declaration of Conformity

Name: Samsung Electronics Co., Ltd
Address: 416, Maetan-3Dong, Paldal-Gu, Suwon City, Kyungki-Do, Korea 442-742
declares under its sole responsibility that the product
Trade Name: Samsung Electronics Co., Ltd
Model Number: YP-T7
has been tested according to the
FCC/CISPR22/95 requirements for Class B
devices and found compliant with the following
standards

Safety Information

ENG

EMI/EMC: AnSI C63.4 1992, FCC Part 15 Subpart B

This device complies with part 15 of the FCC Rules.

Operation is subject to the following two conditions:

- 1.This device may not cause harmful interference, and
- 2.This device must accept any interference received, including interference that may cause undesirable operation.

Party Responsible for Product Compliance

Samsung Electronics America
QA Lab.
3351 Michelson Dr. Suite #290
Irvine, CA92612

Warranty

Samsung warrants this product as free of defects in material, design and workmanship for a period of twelve(12) months from the original date of purchase.

If during the period of warranty this product proves defective under normal use and service, you should return the product to the retailer from whom it was originally purchased. The liability of Samsung and its appointed maintenance company is limited to the cost of repair and/or replacement of the unit under warranty.

Return of the product for defective reasons should be to the original purchaser; however, Samsung Authorized Dealers and Authorized Service Centers will comply with the warranty on the terms issued to purchasers in the country concerned. For further information relating to the Authorized Service Centers contact;
1-800-SAMSUNG (1-800-726-7864)
www.samsung.com

WARRANTY CONDITIONS:

- 1.The warranty is only valid when the warranty card is properly completed, and upon presentation of the proof of purchase consisting of original invoice or sales slip confirmation, indicating the date of purchase, dealer's name, model, serial No. and product number.
Samsung reserves the right to refuse warranty service if this information has been removed or changed after the original purchase of the product from the dealer.
- 2.Samsung's obligations are to the repair of the defective part, and at its discretion, replacement of the product (service exchange unit).
- 3.Warranty repairs must be carried out by an Authorized Samsung Dealer/Service Center. No reimbursement will be made for repairs carried out by non Samsung Centers, and warranty coverage will not be valid for any repairs or damage caused by such repairs.
- 4.Repair or replacement under the terms of this warranty does not give right to extension to or a new starting of the period of warranty. Repair or direct replacement under the terms of this warranty may be fulfilled with functionally equivalent service exchange units.

5. The warranty is not applicable in cases other than defects in material, design and workmanship. The warranty does not cover the following:

- ◆ Periodic checks, maintenance, repair and replacement of parts due to normal wear and tear.
- ◆ Abuse or misuse, including but not solely limited to the failure to use this product for its normal purposed or in accordance with Samsung's instructions usage and maintenance.
- ◆ Use of the product in conjunction with accessories not approved by Samsung for use with this product.
- ◆ Failure of the product arising from incorrect installation or use not consistent with technical or safety standards in current force, or failure to comply with product manual instructions.
- ◆ Accidents, Acts of God or any cause beyond the control of Samsung caused by lightning, water, fire, public disturbances and improper ventilation.

◆ Unauthorized modifications carried out for the product to comply with local or national technical standards in countries for which the Samsung product was not originally designed.

◆ Repairs performed by non-authorized service centers such as opening of the product by a non-authorized person.

◆ The model, serial No. and product number on the product has been altered, deleted, removed or made illegible.

6. This warranty does not affect the consumer's statutory rights nor the consumers rights against the dealer from their purchase/sales agreement.

ENG

Warranty

Warranty

THERE ARE NO EXPRESS WARRANTIES OTHER THAN THOSE LISTED AND DESCRIBED ABOVE, AND NO WARRANTIES WHETHER EXPRESS OR IMPLIED, INCLUDING, BUT NOT LIMITED TO, ANY IMPLIED WARRANTIES OF MERCHANTABILITY OR FITNESS FOR A PARTICULAR PURPOSE, SHALL APPLY AFTER THE EXPRESS WARRANTY PERIODS STATED ABOVE, AND NO OTHER EXPRESS WARRANTY OR GUARANTY GIVEN BY ANY PERSON, FIRM OR CORPORATION WITH RESPECT TO THIS PRODUCT SHALL BE BINDING ON SAMSUNG. SAMSUNG SHALL NOT BE LIABLE FOR LOSS OF REVENUE OR PROFITS, FAILURE TO REALIZE SAVINGS OR OTHER BENEFITS, OR ANY OTHER SPECIAL, INCIDENTAL OR CONSEQUENTIAL DAMAGES CAUSED BY THE USE, MISUSE OR INABILITY TO USE THIS PRODUCT, REGARDLESS OF THE LEGAL THEORY ON WHICH THE CLAIM IS BASED, AND EVEN IF SAMSUNG HAS BEEN ADVISED OF THE POSSIBILITY OF SUCH DAMAGES. NOR SHALL RECOVERY OF ANY KIND AGAINST SAMSUNG BE GREATER IN AMOUNT THAN THE PURCHASE PRICE OF THE PRODUCT SOLD BY SAMSUNG AND CAUSING THE ALLEGED DAMAGE. WITHOUT LIMITING THE FOREGOING, PURCHASER

ASSUMES ALL RISK AND LIABILITY FOR LOSS, DAMAGE OR INJURY TO PURCHASER AND PURCHASER'S PROPERTY AND TO OTHERS AND THEIR PROPERTY ARISING OUT OF THE USE, MISUSE OR INABILITY TO USE THIS PRODUCT SOLD BY SAMSUNG NOT CAUSED DIRECTLY BY THE NEGLIGENCE OF SAMSUNG. THIS LIMITED WARRANTY SHALL NOT EXTEND TO ANYONE OTHER THAN THE ORIGINAL PURCHASER OF THIS PRODUCT, IS NONTRANSFERABLE AND STATES YOUR EXCLUSIVE REMEDY.

Some states do not allow limitations on how long an implied warranty lasts, or the exclusion or limitation of incidental or consequential damages, so the above limitations or exclusions may not apply to you. This warranty gives you specific legal rights, and you may also have other rights which vary from state to state. This product is for personal use only, and is only for use in compliance with the limitations of copyright and other laws.

To obtain warranty service, please contact SAMSUNG at:
Samsung Electronics America, Inc.
400 Valley Road, Suite 201 Mount Arlington, NJ 07856
1-800-SAMSUNG (1-800-726-7864)
www.samsung.com
081299

ENG