



# MM-E250

## Electric Mini Bike

Monster Moto, LLC  
1001 S. Jupiter Rd.  
Garland, TX 75042  
Phone: 855-833-6483  
All rights reserved. © 2013  
MADE IN CHINA



## Owner's Manual

This operator's manual contains important safety information and maintenance information. Read it carefully before using this vehicle. Failure to follow the warnings contained in this operator's manual could result in INJURY or DEATH.

Keep this manual in a safe place. It is very important that this owner's manual be reviewed by all riders and it should be considered a permanent part of the mini bike and should remain with the vehicle when transferred to a new owner.

This manual contains the latest product information available before printing. Due to product improvements or production changes, there could be discrepancies between the information contained in this manual and accurate product information. Monster Moto, LLC (Monster Moto) reserves the right to make changes to its products at any time, without notice and without obligation to make the same or similar changes to any vehicle previously built or sold.

No part of this publication may be reproduced or copied without written permission from Monster Moto.

# PROBLEMS? DO NOT RETURN TO STORE! CALL US!

## Contents

---

<b>Warranty</b>	<b>1</b>
<b>Introduction and Safety Messages</b>	<b>2 - 5</b>
<b>Operating Controls</b>	<b>5 - 7</b>
<b>Initial Set-Up</b>	<b>8</b>
<b>Pre-Ride Checklist</b>	<b>9</b>
<b>Basic Operation</b>	<b>10 -11</b>
<b>Maintaining your Mini Bike</b>	<b>12-15</b>
<i>Rear Brake Adjustment</i>	<i>12</i>
<i>Drive Chain</i>	<i>13</i>
<i>Tire Pressure</i>	<i>14</i>
<i>Fuse Replacement</i>	<i>14</i>
<i>Battery Replacement</i>	<i>15</i>
<b>Troubleshooting</b>	<b>16 - 18</b>
<b>Product Registration</b>	<b>19 - 20</b>

## Warranty Information

---

Congratulations on your decision to purchase a Monster Moto power sports product! We are pleased that you have chosen a Monster Moto product, and we are dedicated to supporting your successful and safe power sports recreation experience!

We are grateful for your business, and in order to assure your quality experience, please review and make note of the following warranty related issues:

**KEEP YOUR RECEIPT:** Proof of purchase will be required to substantiate any warranty claim.

**WHAT IS COVERED:** Monster Moto warrants to the original retail purchaser of this Product that this Product is free from defects in material or workmanship and agrees, at Monster Moto's discretion, to either repair, provide replacement parts for, or replace (without charge or labor), any product component having a material defect for a period of ninety (90) days from the date of purchase, except as limited below. Monster Moto may require the purchaser to return to Monster Moto, at their expense, the part claimed to be defective for Monster Moto's inspection, at which time the returned parts or product become property of Monster Moto.

**WHAT IS NOT COVERED:** This warranty does not cover any conditions caused by misuse, neglect, negligence, accident or operation in any way contrary to the operating instructions located in the operator's manual. Normal wear, alteration, modification, improper or inadequate maintenance, or use of unauthorized replacement parts or service provided by anyone other than an Authorized Monster Moto Service Center are not covered under this warranty. This warranty does not cover products used for rental or commercial purposes or used in competition, nor does it cover transportation costs for warranty service. Without limiting the above, this warranty is VOID with respect to any product that has sustained damage resulting from impacts, accidents, jumping, or any other uses considered outside of the scope of normal and safe operation.

**LIMITATIONS OF LIABILITY:** This Warranty is non-transferable after the Product's initial sale. No unapproved modifications can be made to the Product, its performance or otherwise, in order for this Limited Warranty to remain in effect. No reimbursement is provided for towing, loss of time, loss of use, inconvenience, incidental or consequential damages. This Limited Warranty covers only parts and labor due to manufacturer defect. This Warranty does not cover minor surface blemishes, rips, tears, or other cosmetic damages due to normal use, or other intentional or unintentional damage to the Product. This Limited Warranty will not cover any damage which results from the application of improper cleaners, solvents or chemicals to the Product, or from smoke or soot, or from exposure to saltwater, sea breeze or salt. This Limited Warranty will not cover any damage resulting from product storage in the elements. This Limited Warranty does not cover improper repair or misdiagnosis of product problems.

**OWNER'S RESPONSIBILITIES:** As the vehicle owner, you are responsible for performing required maintenance and maintaining a record of all receipts for maintenance performed on your mini bike. Your warranty claim may be denied solely because of your failure to ensure the performance of all scheduled maintenance or lack of maintenance records or receipts. As the vehicle owner, you may be denied your warranty coverage if your vehicle or a part has failed due to abuse, neglect, improper maintenance or unapproved modifications.

# PROBLEMS? DO NOT RETURN TO STORE! CALL US!

## Introduction

---

Your Monster Moto MM-E250 electric mini bike was designed as a recreational mini bike for a single rider. This mini bike is ideal for younger riders with basic experience.

Always check and obey any local laws or regulations which may affect the location the MM-E250 may be used and safely operated. This vehicle is intended for use on solid, flat, clean and dry surfaces such as pavement or level ground without loose debris such as gravel or dirt. Icy or rough terrain can create hazardous riding conditions resulting in an accident. Do not operate in wet conditions or through standing water because you can permanently damage the electrical system and components. Never use the MM-E250 on carpet or indoor flooring because it will damage those surfaces. Be careful to watch for pedestrian traffic wherever you ride your MM-E250. The bike is built for smaller riders.

Before riding, please take your time to get acquainted with your MM-E250 and how it works. To protect your investment, we urge you to keep it well maintained. In addition to regular maintenance, it is important to observe and perform all pre-ride and periodic checks outlined in this manual. In this manual, you will find helpful safety information, instructions, facts, and helpful tips. To make it easier to use, there is a table of contents at the beginning.

As you read through this manual you will find information that is preceded with a **NOTICE** symbol. This information is intended to help you avoid damage to your mini bike. This manual covers basic maintenance procedures.

Read the warranty page carefully so that you understand the coverage on your mini bike and are aware of your rights and responsibilities.

If you have any questions or you need any special service or repair, remember that your Monster Moto authorized service center knows your mini bike best and will be dedicated to your complete satisfaction. Replacement parts and technical support can be obtained online at [www.monstermoto.com](http://www.monstermoto.com) or by phone at 855-833-6483. Please be sure to register your Monster Moto product and notify us of any address changes so we may contact you in the future with any important product information.

You can also visit our website at [www.monstermoto.com](http://www.monstermoto.com) to view service videos and information about all Monster Moto products.

## Important Safety Information

Your personal safety, and the safety of those around you, is extremely important. Operating this mini bike safely is an important responsibility.

Monster Motor has provided operating procedures and other information on labels on your mini bike and in this manual to help you make informed decisions about safety. This information will alert you to potential hazards that could harm you or others.

It is understood that it is not practical or possible to warn you about all possible hazards associated with operating and maintaining a mini bike. You must use your own good judgment.

Safety information will come in a variety of different forms, including:

- **Safety Labels** on the mini bike
- **Safety Messages** preceded by a safety symbol  and one of these three signal words: **DANGER, WARNING or CAUTION.**

Below are the definitions of these three words:

### **DANGER**

You **WILL** be KILLED or SERIOUSLY INJURED if you do not follow instructions.

### **WARNING**

You **CAN** be KILLED or SERIOUSLY INJURED if you do not follow instructions.

### **CAUTION**

You **CAN** be INJURED if you do not follow instructions.

- **Safety Headings** such as important safety reminders and/or precautions.
- **Safety Sections** such as mini bike safety.
- **Instructions on** how to use the mini bike safely and correctly.

This entire manual is filled with important safety information - please read it carefully.

# PROBLEMS? DO NOT RETURN TO STORE! CALL US!

## Important Safety Information

---

A mini bike can provide many years of service and pleasure, provided you take responsibility for safety, properly maintain your mini bike and understand the challenges you may encounter while riding.

This mini bike has been designed for younger riders. However, not all youngsters meet the physical and emotional levels that are needed for riding. Before parents allow any children to ride this mini bike, we strongly recommend that both of you read this entire manual so you are fully informed before deciding if your children are ready to ride. Listed below are some of the most important safety measures one should take when riding.

**⚠ DANGER** Ride with proper attire The following statement is a proven fact: "Helmets significantly reduce the number and severity of head injuries." Never ride your mini bike without a helmet or eye protection. Even a crash at slow speed can result in a fatal head injury if you are not wearing a helmet. Monster Moto recommends wearing helmets that have been certified for safety by helmet testing organizations which are independent from the helmet manufacturer. We also recommend that you wear other approved safety gear such as elbow and knee pads. Always wear shoes, keep laces tied, and never ride barefooted or with sandals.

**⚠ WARNING** Never Carry a Passenger This mini bike has been designed for ONE rider only. There are no passenger pegs, footrests, handles or seat room for a passenger. Riding with a passenger can interfere with your ability to operate and/or control the mini bike and may result in serious injury or death.

**⚠ WARNING** Ride Off-Road Only This mini bike has been designed and manufactured for off-road use only. The mini bike is not equipped with lights, turn signals, horn and other features required to drive a mini bike on public roads.

**⚠ WARNING** Ride Within Your Limits Never attempt to ride your mini bike in a manner that is beyond your skill level. It takes time to learn proper riding skills. Learn to ride your mini bike step by step. Start by practicing on safe terrain at slow speeds and gradually build your skill level. Instruction from an experienced rider(s) is highly recommended.

**⚠ DANGER** Parental Supervision Required The MM-E250 is an electric power sports vehicle and not a toy. The recommended rider age of 8 or older is only an estimate and can be affected by the rider's maturity levels, weight and skills. Any rider who cannot comfortably fit on the mini bike should not ride the unit.

Keep small children away from this unit. Only supervised or approved riders who are capable of handling the mini bike are allowed to sit on and ride the unit.

## Important Safety Information

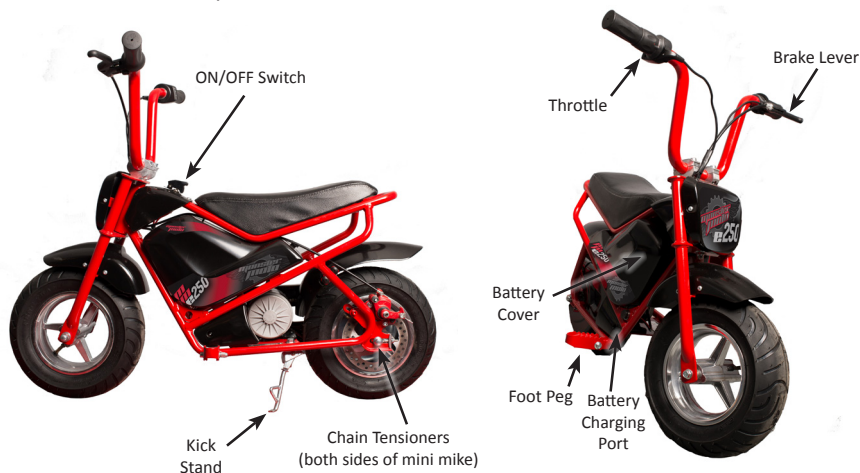
### **⚠ DANGER** Use Safe Riding Practices

- Do not jump, or attempt stunts, with your MM-E250.
- Hold onto handle bars at all times.
- Never wear earphones or operate a cell-phone or video game while riding.
- Keep all loose articles of clothing (laces, pants, sleeves, scarfs, etc.) away from moving parts such as the drive sprocket and chain.
- Never hitch a ride from another gas-powered or electric vehicle.
- Do not ride the MM-E250 near pools, or in wet weather and do not immerse mini bike in water. Water will damage the electric components and void your warranty.
- Always operate at a safe speed. The bike is set on the “slow” speed, but if you want to increase speed, see section “Check Speed Switch” to change to higher speed.
- Always use common sense when faced with problems. If there is any doubt about a situation or problem with your unit, do not operate further and call our customer service line – 855-863-6483.

**⚠ WARNING** Improper accessories or modifications can cause a crash in which riders can be seriously hurt or killed. Follow all instructions in this owner’s manual regarding modifications and accessories.

## Operating Controls and Component Locations

When you ride your mini bike, you need to operate the throttle, brakes, and other controls without stopping to look at them. Please read this section carefully before you ride your mini bike. This section of the manual will describe the function, location, and operation of all the basic controls of your mini bike.



# PROBLEMS? DO NOT RETURN TO STORE! CALL US!

## Operating Controls

### ON/OFF Switch

The ON/OFF switch is used to control power to the motor. When the switch is in the “OFF” position, no power is supplied to the motor. To ride the mini bike, flip the switch up. This is the “ON” position. To shut off the bike, close the latch or move the switch down to the “OFF” position.



### Throttle

The throttle controls the speed of the motor. To increase motor speed, slowly twist the throttle grip toward you. To reduce motor speed, twist the throttle grip away from you. The throttle is spring loaded and will return to the closed position (motor idle) when you remove your hand.

**⚠ WARNING** Because this is an electric product, small movements in the throttle produce an instant response in the motor. Do not suddenly twist throttle or you risk severe injury.



### Rear Brake

The brake lever is used to apply the brake to the rear wheel and will slow or stop the mini bike. When you pull back on the lever, the brake cable pulls the caliper on the brake disc. The amount of force that you use when pulling the brake lever will determine how much braking power is applied. To release the rear brake, release the brake lever.



### Kick Stand

The kick stand is used to support the mini bike when it is parked. To operate, use your foot to lower the stand. Always raise the stand before riding the mini bike.



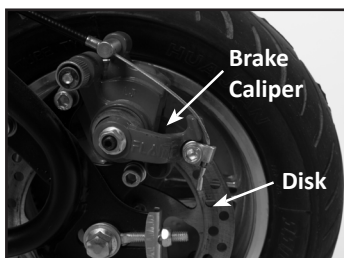


## Operating Controls

### Brake Mechanism

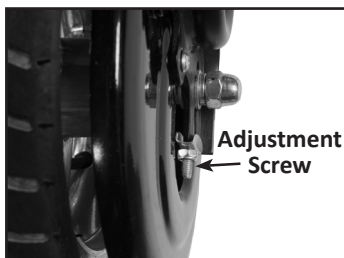
The MM-E250 mini bike is equipped with a rear disc brake. It provides power to safely bring the mini bike to a stop.

Refer to the [Basic Maintenance Procedures](#) section for brake adjustment instructions.



### Chain Tensioner

Chain tension is maintained and adjusted by the bolts on both sides of the rear wheel. The adjustment screw will increase or decrease the slack on the chain. Please see [Basic Maintenance Procedures](#) to understand how to determine proper chain tension and for instructions on how to make adjustments to maintain proper tension.



# PROBLEMS? DO NOT RETURN TO STORE! CALL US!

## Initial Set-Up

### 1. Locate All Accessories in Package Before Proceeding

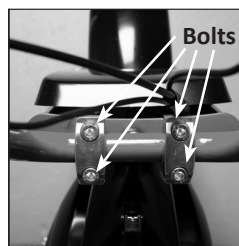
- Owner's Manual
- Tools (2 allen wrenches, 2 box end wrenches, 2 handlebar clamps & 4 bolts, screwdriver)
- Charger

### 2. Attaching the Handlebars

*Your Monster Moto MM-E250 is shipped with the handlebars NOT bolted on.*

To attach the handlebars follow the steps below:

1. After unpacking your mini bike, place it on the kick stand on a flat level surface.
2. While sitting on the bike, place the handle bars in the lower clamp in a comfortable position, being careful to center in the clamps.
4. Replace upper clamps and bolts and tighten to 12 foot-lbs with the allen wrench provided. **Do not overtighten.**



Top View  
Handlebar Clamps

### 3. Charge the Battery

**NOTICE** The first time you charge your battery it must be fully charged. While it will be tempting to charge for a short amount of time to be able to ride the mini bike immediately, failure to properly charge will severely shorten the run time as the battery ages and limit the number of recharges the battery will take. Your mini bike will be ready to ride when the indicator light on the charger turns GREEN.

- 1) Make sure the on/off switch is in the off ("down") position.
- 2) Locate the charger and find the battery port on the right front side of the mini bike.
- 3) Remove the plastic protective cap, align the notch on the charger and port and insert charger.
- 4) Plug the other end of the charger into a standard 110-volt household outlet.
- 5) Continue to charge until GREEN light on charger appears.
- 6) Unplug charger from wall, disconnect charger from port and install port cover once charging is complete.
- 7) Conduct pre-ride inspection and begin having fun!



**CAUTION** Remove charger from bike once GREEN light appears on charger. Extending charging time will NOT extend operating time.

**WARNING** THE UNIT WILL NOT TURN ON WHILE THE CHARGER IS PLUGGED INTO THE CHARGING PORT! Disconnect the charger from the port before attempting to ride the bike.

## **Pre-Ride Check List**

---

Before each ride, go through the following checklist to ensure your MM-E250 is safe and you are ready. Make sure the rider fully understands the contents of the owner's manual and is capable of safely riding.

### **1) INSPECT FOR LOOSE PARTS**

Check your MM-E250 for any loose plastic pieces or fasteners. If you find any, please correct the issue and continue your inspection. If you hear rattles or other sounds you cannot locate, do not operate the unit and contact Monster Moto customer service at 855-833-6483 or your local Monster Moto authorized service center.

### **2) INSPECT FRAME, FORKS AND HANDLEBARS**

Check for cracks in the metal, bent forks or frame, disconnected wires or other abnormal issues. These can result from abusive riding and can cause unsafe riding conditions if not corrected.

### **3) CHECK TIRE PRESSURE**

Your tires should be properly inflated. Underinflated tires can limit the handling ability of the bike while overinflated tires can suddenly burst or create a rough ride.

### **4) CHECK PROPER BRAKE FUNCTION**

Squeeze your brake handle to make sure it applies pressure to the rear wheel brake disc. If it does not properly grab the disc, please adjust brakes and try again. The brake handle should return to original position after handle is squeezed.

### **5) CHECK THE CHARGER**

Be sure to disconnect the charger from the battery port prior to operating the mini bike. The unit will not run at all if the charger is still plugged into the port on the mini bike.

### **6) SAFETY GEAR**

Be sure to have the proper Department Of Transportation certified helmet. Goggles, knees and elbow pads, and long pants and shirt are also recommended to ensure maximum protection. Always wear shoes and ensure that your laces are tied and secured away from the mini bike wheels, drive sprocket and chain. Never ride barefooted or with

sandals.

# PROBLEMS? DO NOT RETURN TO STORE! CALL US!

## Basic Operation

After you have conducted your pre-ride checklist, you are now ready to ride. There are a few simple things you will need to know to enjoy your electric mini bike.

### Unplug Charger

**NOTICE** If the charger is still plugged into the charging port on the mini bike, IT WILL NOT RUN.

Unplug the charger from the charger port and replace the port cap. Unplug the charger from the wall outlet and store in a safe place until next use.



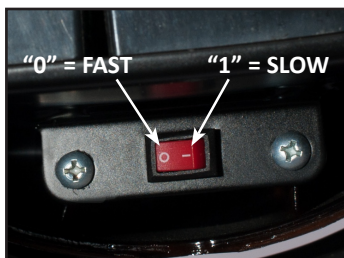
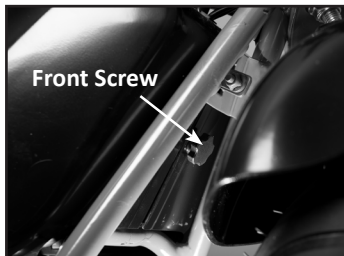
### Check Speed Switch

This switch allows the parent to control whether the unit will operate at the slow speed (Max Speed: 6.8 MPH) or fast speed (Max Speed: 13 MPH)

First, make sure the power switch is in the "off" position. Next, remove the plastic battery cover by unscrewing the front and back screws. Remove the cover and set aside.

Locate switch below the battery box and set to desired speed ( "0" = Fast; "1" = "Slow").

Reinstall the battery cover.



## Basic Operation

### Turn On the Power

Lift up the protective cover on the tank and move the switch into the “ON” position.



### Braking

This section will cover basic braking technique for your mini bike. To slow or stop the mini bike, squeeze the brake lever firmly and smoothly. Gradually increase your braking pressure as you feel it is needed. When you come to a stop, put your foot down to balance the mini bike.

Generally, reduce your speed and complete your braking before you begin a turn. Avoid braking or closing the throttle quickly while turning. Either of these actions may cause one or both of the wheels to slip. Any wheel slip will reduce your control over the mini bike and could cause a crash.

#### **⚠ WARNING**

Rapid acceleration, braking, or turning can cause you to lose control of the mini bike.

### Parking

When you want to stop, release the throttle lever to stop supplying power to the motor. Increase the brake force until the unit comes to a stop on a flat surface. Place both feet firmly on the ground to balance the bike and extend the kick stand. Gently lean over the bike until it rests safely on the kick stand and dismount.



### Post-Ride Inspection

After every ride, stop to inspect the bike for loose parts, wires and fasteners. If the bike was making unusual noise or sounds during the ride, trouble shoot the problem and fix before the mini bike is ridden again. If you have any questions, contact our customer service team (855-833-6483) or go online ([www.monstermoto.com](http://www.monstermoto.com)) to look at our library of service videos or to read our FAQs.

# PROBLEMS? DO NOT RETURN TO STORE! CALL US!

## Basic Maintenance

Your electric-powered MM-E250 is a relatively low maintenance product because it uses batteries and an electric motor instead of a gas-powered engine. But, there is still basic maintenance required to keep your mini bike operating smoothly. Each maintenance item requires basic tools and mechanical aptitude. DO NOT attempt any of these adjustments if you do not feel comfortable.

You can visit our website to see our library of service videos which show step-by-step instructions for these maintenance procedures. You will also be able to look at our FAQs for answers to other questions. You can also call our trained customer service staff (855-883-6483) and they will be able to answer any questions you may still have.

### 1) Adjusting the Brakes

You can increase or decrease the pressure on your mini bike brakes with the adjuster on the brake lever. Release the lock nut and turn the adjuster  $\frac{1}{4}$  -  $\frac{1}{2}$  turn until you achieve the correct pressure on your brake. Tighten up lock nut when finished. (See Fig 1)

If your brakes donot work properly after adjusting on the brake lever, you will need to adjust the cable on the caliper on the rear wheel. (See Fig 2)

Loosen the cable nut securing the brake cable to the caliper. Slide the caliper arm up the cable until it stop and then back off about  $\frac{1}{2}$ ". Retighten the lock nut and try your brakes again.

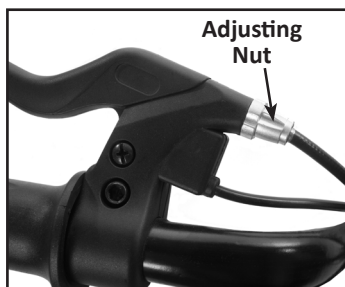


Fig 1

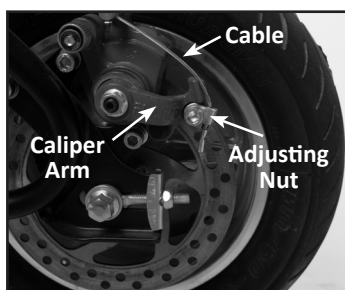


Fig 2

## Basic Maintenance

### 2) Chain Inspection and Adjustment

The service life of your drive chain will depend on several factors including proper lubrication, adjustment, and riding style. Poor maintenance will cause premature wear and/or damage to the drive chain and sprockets.

Before you service your drive chain, be sure you are parked on a level surface and the ON/OFF switch is turned "OFF". As an additional pre-caution, disconnect the positive lead on the batteries to ensure there will be no power to the motor.

**⚠ WARNING** Failure to turn off power from the engine during this maintenance procedure may result in accidental power being supplied to the engine. This may result in fingers and hand being pinched or severed, or the mini bike moving and causing damage to work area and owner.

1) After you turn off power switch and disconnect battery, reach inside chain guard to find chain. Press on chain mid-way between sprockets and determine slack. Vertical movement should be between 1/4" and 3/8".

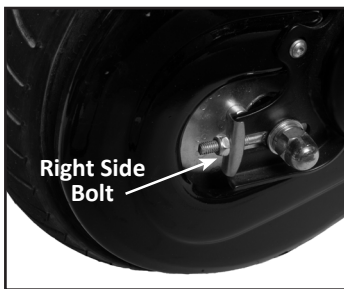
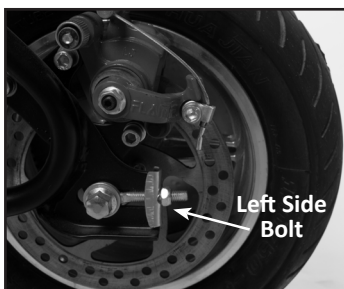
2) If the chain needs to be adjusted, locate the adjustment bolts on either side of the rear wheel.

3) Adjust both sides equally and then retest chain tension. Continue process until you get the correct slack.

**⚠ CAUTION** If there is not enough slack in your chain, it will result in excessive wear on the chain, sprockets and bearings. Be careful not to overtighten!

4) Reconnect battery and conduct pre-ride inspection to ride mini bike.

**NOTE:** You should replace the chain if the tensioner is adjusted as far back as possible and there is still too much slack. This indicates excessive wear and the chain is beyond its service limit.



# PROBLEMS? DO NOT RETURN TO STORE! CALL US!

## Basic Maintenance

### 3) Tire Pressure

Locate the valve stem on the tires and check tire pressure. If it is not between 20 and 40 psi, add (or deflate) until your pressure is correct.

For the rear tire, access the valve stem between the tire and brake rotor. If you need to inflate the tire and are not able to do so with a standard air chuck, use an extender to access the valve stem.



### 4) Fuse Replacement

#### **⚠ WARNING**

Before you begin, make sure the power switch is turned "OFF". Failure to do so may result in damage to the electrical circuit or a shock to the person doing the repair.

The fuse for your MM-E250 is located inside the battery box. To access it, carefully remove the battery box by removing the screws on the front and back of battery box.

Next, find the fuse which is located on the jumper between the two batteries. (See Fig 3)

Remove old fuse and replace with 30 Amp automotive fuse. (See Fig 4)

Replace fuse cover. Reinstall battery cover.

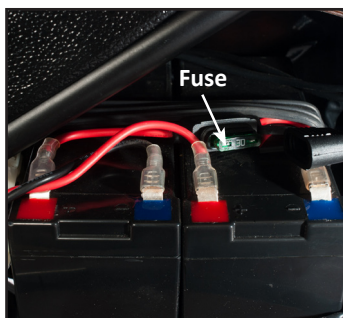
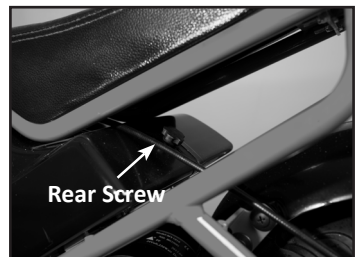


Fig 3



Fig 4



## Basic Maintenance

### Battery Replacement

Over time, your battery will lose its ability to hold a charge. When this happens, you will need to install new batteries.

#### **⚠ WARNING**

Before you begin, make sure the power switch is turned "OFF". Failure to do so may result in damage to the electrical circuit or a shock to the person doing the repair.

After you have ensured the power switch is off, remove the battery box per the instructions in "Fuse Replacement."

Remove the rubber strap holding the batteries in place and partially slide the batteries out to expose the wiring. Note: You may need to move the black wire bundle on the side of the batteries to slide them out. (Fig 1)

Next, disconnect the middle terminals (one red, one black) and remove the batteries from the battery box. Disconnect the jumper cable from both batteries.

Take your new batteries and place them side by side and connect the fuse as shown in Fig 2. Carefully slide the batteries back into the battery box.

Reconnect the leads from the bike to the battery. Make sure the red lead is connected to the positive "+" terminal and the black lead is connected to the negative "-" terminal. (Fig 3)

#### **⚠ WARNING**

You will need to make sure the connections to the battery are done correctly.

- The positive terminal on the battery will need to be connected to the RED lead.
- The Negative terminal on the battery will need to be connected to the BLACK lead.
- Failure to properly connect batteries can result in serious injury to the rider or severe damage to the electrical components of the mini bike.

Push the batteries back into the box and secure them with the rubber strap. Connect the charger to the bike and charge until the GREEN light on the charger is displayed

#### **⚠ WARNING**

Only use the recommended battery charger. Failure to do so may result in overheating of the batteries which can result in an explosion or create permanent damage resulting in shorter battery life.

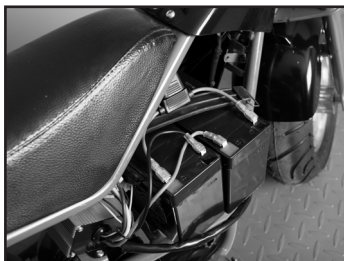


Fig 1

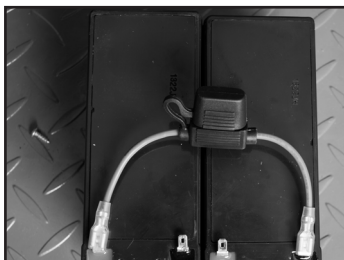


Fig 2

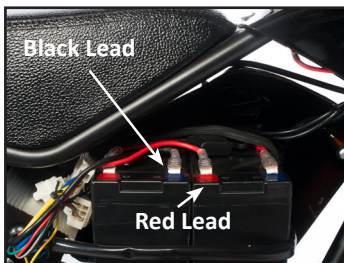


Fig 3

# PROBLEMS? DO NOT RETURN TO STORE! CALL US!

## Troubleshooting

### Does Not Run or Runs Occasionally

- 1. Check the Battery Charge** - Turn unit on and look at “gauge” on throttle to see if bike is charged.  
Is it fully charged?  
**No** - Charge the battery until the green light appears on the charger. If this is the first time to charge, it may take up to 8 hours to charge completely. If it's been charged before, it could take up to 6 hours.  
**Yes** - Go to Step 2.
- 2. Check the fuse** (Located in the black fuse holder in the battery box)  
Is the fuse blown?  
**No** - Go to Step 3  
**Yes** - Replace the fuse by following the instructions on page 14. If it continues to blow, see your Monster Moto authorized service center to have your bike properly diagnosed and serviced.
- 3. Check the Charger Plug**  
Is it plugged into the mini bike?  
**No** - See step 3.  
**Yes** - The MM-E250 will not run when the charger is in the charging port. Disconnect and try again.
- 4. Check the Battery Connections**  
Are all connections tight?  
**No** - Tighten all connections as needed.  
**Yes** - See your Monster Moto authorized service center to have your mini bike properly diagnosed and serviced.

### Bike Was Running But Stopped Abruptly

- 1. Check the fuse** (Located in black rubber fuse holder in battery case)  
Is it blown?  
**No** - See Step 2  
**Yes** - Allow the motor to cool off for 20 minutes and then replace the fuse following the instructions on page 14. If it continues to blow, see your Monster Moto authorized service center to have your bike properly diagnosed and serviced.
- 2. Check the Power Switch**  
Is it visibly damaged?  
**No** - See your Monster Moto dealer to have your mini bike properly diagnosed and serviced.  
**Yes** - See your Monster Moto authorized service center to have your mini bike serviced. (Or: Visit our online store at [monstermoto.com](http://monstermoto.com) or call 855-833-6483 to order replacement parts or for technical support.)

## Troubleshooting

### Short Run Time (15 minutes or less)

1. **Check the Battery** - Turn unit "ON" and look at the "gauge" on the throttle to see if bike is charged.

Is it charged?

**No** - Charge the battery until the GREEN light appears on the charger. If battery will not accept full charge, it must be replaced. Visit our online store at [montermoto.com](http://montermoto.com) or call 855-833-6483 to order replacement parts or for technical support.

**Yes** - See Step 2

2. **Check the Tires**

Are they fully inflated?

**No** - Inflate tires to 20-40 psi per instructions on page 14.

**Yes** - See Step 3

3. **Check the Brake**

Is it adjusted properly?

**No** - Adjust the brake per instructions on page 12.

**Yes** - See your Monster Moto authorized service center to have your mini bike properly diagnosed and serviced. (Or: Visit our online store at [montermoto.com](http://montermoto.com) or call 855-833-6483 to order replacement parts or for technical support.)

### Bike Runs Poorly

1. **Check for Overloading**

Is the total load under 100 lbs.?

**No** - Do not exceed 100 lbs. of rider weight or attempt to carry passengers.

**Yes** - See Step 2

2. **Review the Terrain**

Is it too challenging?

**No** - See Step 3

**Yes** - Use only on solid, dry, flat surfaces free of gravel and debris.

3. **Check the Tires**

Are they fully inflated?

**No** - Inflate tires to 20-40 psi per instructions on page 14.

**Yes** - See Step 4

4. **Check the Brake**

Is it adjusted properly?

**No** - Adjust the brake per instructions on page 12.

**Yes** - See your Monster Moto authorized service center to have your mini bike serviced. (Or: Visit our online store at [montermoto.com](http://montermoto.com) or call 855-833-6483 to order replacement parts or for technical support.)

### Charger Gets Warm When Charging

No action is required. The Charger will generate a small amount of heat as the battery is charging.

# PROBLEMS? DO NOT RETURN TO STORE! CALL US!

## Troubleshooting

### Mini Bike Will Not Stop Properly

- 1. Check the throttle** Make sure when it is released it goes back to original position.

Does the throttle go back to original position and cut power to the motor?

**No** - Check between the throttle and handle for any debris lodged which prohibits the throttle from returning to original position. Remove debris and check again. If problem continues or you cannot find any debris, see your nearest Monster Moto authorized service center to have your bike serviced.

**Yes** - Go to Step 2

- 2. Check the Brake**

Is it adjusted properly?

**No** - Adjust the brake per instructions on page 12.

**Yes** - See your Monster Moto authorized service center to have your mini bike serviced. (Or: Visit our online store at [monstermoto.com](http://monstermoto.com) or call 855-833-6483 to order replacement parts or for technical support.)

### Grinding or Squeaking Noise While Bike is Moving

- 1. Check the Chain Tension**

Is it adjusted properly?

**No** - Adjust the tension per instruction on page 13.

**Yes** - See Step 2

- 2. Check the Chain Lubrication**

Is the chain adequately lubricated?

**No** - Lubricate the chain per instructions on page 13.

**Yes** - See your Monster Moto authorized service center to have your mini bike serviced. (Or: Visit our online store at [monstermoto.com](http://monstermoto.com) or call 855-833-6483 to order replacement parts or for technical support.)

### Bike Runs Fine but Slow

- 1. Check the Safety Speed Switch** (The switch is located inside the battery case, under the battery)

Is it set at "I"?

**No** - Turn Safety Speed Switch from "I" (slow speed 6.8 mph) to "O" for fast speed (13mph) per instructions on page 10.

**Yes** - See your Monster Moto authorized service center to have your mini bike serviced. (Or: Visit our online store at [monstermoto.com](http://monstermoto.com) or call 855-833-6483 to order replacement parts or for technical support.)



# MM-E250

Electric  
Mini Bike



Register your Monster Moto MM-E250 Mini Bike so that we can provide you with the fastest solutions to any problems you may have with your product and so we can keep you up to date regarding any product updates.

Fill out registration form on the next page, and mail it to:  
Monster Moto  
1001 S. Jupiter Rd.  
Garland, TX 75042

Or go online to:  
**[www.monstermoto.com](http://www.monstermoto.com)**  
and fill out the registration form online.

**PROBLEMS? DO NOT RETURN TO STORE! CALL US!**



# MM-E250

Electric Mini Bike

## Product Registration

Please complete and mail this card within 10 days of initial purchase.

Name \_\_\_\_\_ Age \_\_\_\_\_

Address \_\_\_\_\_

City \_\_\_\_\_ State \_\_\_\_\_ Zip \_\_\_\_\_

Email \_\_\_\_\_

Home Phone \_\_\_\_\_

Work Phone \_\_\_\_\_

Purchase Date \_\_\_\_\_ Purchased from \_\_\_\_\_

VIN Number \_\_\_\_\_

Male \_\_\_\_\_ Female \_\_\_\_\_ Occupation \_\_\_\_\_

Other similar product owned before \_\_\_\_\_

How did you hear about the product? \_\_\_\_\_

How do you plan to use your product?

Just for fun \_\_\_\_\_ Work \_\_\_\_\_ Sport \_\_\_\_\_ Commuting \_\_\_\_\_

After form is complete, please mail to:

**Monster Moto**  
1001 S. Jupiter Rd.  
Garland, TX 75042

**855-833-6483 OR EMAIL US AT [info@monstermoto.com](mailto:info@monstermoto.com)**