



IMPACT®

Do it All with the Everex IMPACT GA Series Desktop Computer. Preinstalled with Microsoft® Windows® XP Home Edition and running on the power of an AMD® Processor, the latest PC from Everex lets you create your own DVDs and CDs, surf the Internet or play the latest video games, all on a 17" Flat Panel LCD monitor. Look No Further then the Everex IMPACT: The Perfect blend of Value and Performance.



IMPACT® GA Series Computer*

- **17" Flat Panel LCD Monitor**

- **Microsoft® Windows® XP Home Edition**

- **AMD® Processor**

- **DVD Rewritable Optical Drive**

User Manual

*Covers Models GA3400, GA3500, GA3700, GA3800

IMPACT

User Manual

Copyright

Copyright © 2006 Everex Systems Inc. All rights reserved.

- ◆ Disclaimer: FIC Inc. shall not be liable for technical or editorial errors or omissions contained herein; or for incidental or consequential damages resulting from furnishing this material, or the performance or use of this product.
- ◆ FIC Inc. reserves the right to change product specification without prior notice; therefore, information in this document may change without notice.
- ◆ No part of this document may be copied, reproduced, or transmitted by any means or for any purpose without prior written permission from FIC Incorporated.

Safety Instructions

This computer has been tested for conformance to international safety regulations. Like any electronic device, however, the computer should be used with care. To protect yourself from possible injury and to minimize the risk of damage to the computer, read and follow all the safety instructions mentioned in this manual.

- ◆ Read all of these instructions.
- ◆ Save these instructions for future use.
- ◆ Follow all warnings and instructions marked on or in the computer.

WARNING: Do not attempt to service the computer yourself. Opening or removing covers might expose you to dangerous voltage points or other risk, have a qualified person repair it.

WARNING: Keep hair, loose clothing, fingers, and all parts of body away from openings,
moving parts and fan

WARNING: Do not operate the computer with the cover removed.

WARNING: Always disconnect all telephone lines & all power cords from the wall outlet before servicing or disassembling this product. To reduce the risk of personal injury from electrical shock or hot surfaces, disconnect the power cord from the wall outlet, and allow the internal system components to cool before touching.

IMPACT PC USER'S MANUAL

WARNING: This equipment is designed for connection to a grounded (earthed) outlet. The grounded type plug is an important safety feature. To reduce the risk of electrical shock, damage to your equipment, or loss of data, do not disable this feature.

Installation Restrictions

1. Unplug this product from the wall outlet before cleaning. Do not use liquid cleaners or aerosol cleaners. Use a damp cloth for cleaning.
2. Do not use this product near water, in a wet basement or near a swimming pool.
3. Slots and openings in the cabinet and the back or bottom are provided for ventilation; to ensure reliable operation of the product and to protect it from overheating, these openings must not be blocked or covered. The product should never be placed near or over a radiator or heat register, or in a built-in installation unless proper ventilation is provided.
4. This product should be operated from the type of power indicated on the marking label. If you are not sure of the type of power available, consult your dealer or local power company.
5. Do not allow anything to rest on the power cord. Do not locate this product where persons will tread on the cord.
6. If an extension cord is used with this product, make sure that the total ampere rating of the equipment plugged into the extension cord does not exceed the extension cord ampere rating. Also, make sure that the total rating of all products plugged into the wall outlet does not exceed the fuse rating.
7. Never push objects of any kind into this product through cabinet slots as they may touch dangerous voltage points or short out parts that could result in a fire or electronic shock. Never spill liquid of any kind on the product.
8. If this product was not provided with a telephone line cord, use only No.26 AWG or larger telecommunication line cord in order to reduce the risk of fire.
9. Refer your system for servicing to qualified service personal under the following conditions:
 - When the power cord or plug is damaged or frayed.
 - If liquid has been spilled into the product.
 - If the product has been exposed to rain or water.
 - If the product does not operate normally when the operating instructions are followed. Adjust only those controls that are covered by the operating instructions, since improper adjustment of other controls may result in damage and will often require extensive work by a qualified technician to restore the product to normal condition.
 - If the product has been dropped or the cabinet has been damaged.

COPYRIGHT & SAFETY STATEMENT

- If the product displays a distinct change in performance, it indicates a need for service.

Laser Compliance Statement

The CD-ROM / DVD-ROM / CD-RW / DVD-RW drive in this computer is a laser product. The CD-ROM / DVD-ROM / CD-RW / DVD-RW drive's classification label (shown below) is location on the drive.

CLASS 1 LASER PRODUCT

Caution: Use to any controls or adjustments or procedures other than those specified herein may result in hazardous radiate exposure. To prevent exposure to laser emanations (Harmful to Human eyes), Do not attempt to disassemble this unit.

Battery (Lithium)

NOTE: The following caution statement is located in the service and operating manual or on the label adjacent to the battery.

1. English

CAUTION: DANGER OF EXPLOSION IF BATTERY IS INCORRECTLY REPLACED. REPLACE ONLY WITH SAME OR EQUIVALENT TYPE RECOMMENDED BY THE MANUFACTURER. DISCARD USED BATTERIES ACCORDING TO THE MANUFACTURER'S INSTRUCTIONS.

2. French

IL Y A DANGER D'EXPLOSION S'IL Y A REMPLACEMENT INCORRECT DE LA BATTERIE. REMPLACER UNIQUEMENT AVEC UNE BATTERIE DU MÊME TYPE OU D'UN TYPE RECOMMANDÉ PAR LE CONSTRUCTEUR. METTRE AU RÉBUT LES BATTERIES USAGÉES CONFORMÉMENT AUX INSTRUCTIONS DU FABRICANT.

3. German

VORSICHT ! Explosionsgefahr bei unsachgemäßen Austausch der Batterie. Ersatz nur durch denselben oder einem vom Hersteller empfohlenem ähnlichen Typ.
Entsorgung gebrauchter Batterien nach Angaben des Herstellers.

4. Swedish

Explosionsfara vid felaktigt batteribyte.
Använd samma batterityp eller en ekvivalent typ som rekommenderas av apparattillverkaren. Kassera använt batteri enligt fabrikantens instruktion.

5. Danish

Lithiumbatteri- Eksplosionsfare ved fejlagtig håndtering.
Udskiftning må kum ske med batteri af samme fabrikat og type.
Lever det brugte batteri tilbage til leverandoren.

6. Norwegian

IMPACT PC USER'S MANUAL

Eksplosjonsafe ved feilaktig skifte av batteri.
Benytt samme batteritype eller en tilsvarende type anbefalt av
apparatfabriknten.
Brukte batterier kasseres i henhold til fabrikantens instruksjoner.

7. Finnish

Paristo voi räjähtää, jos se on virheellisesti asennettu.
Vaihda paristo ainostaan laitevalmistajan suosittelemaan tyyppiin.
Hävitä käyteen paristo valmistajan ohjeiden mukaisesti.

Television antenna connectors protection (for system TV tuner card)

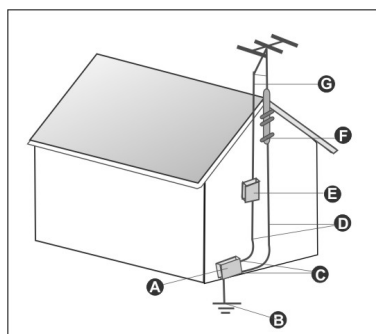
External television antenna grounding

If an outside antenna or cable system is to be connected to the product, make sure that the antenna or cable system is electrically grounded to provide some protection against voltage surges and static charges.

Article 810 of the National Electrical Code. ANSI/NFPA 70, provide information with regard to proper grounding of the mast and supporting structure, grounding of the lead-in wire to an antenna discharge unit, size of grounding conductors, location of antenna discharge unit, connection to grounding electrodes, and requirements for the grounding electrode.

Lightning protection

For added protection of any product during a lightning storm or when it is left unattended or unused for long periods of time, unplug the product from the wall outlet and disconnect the antenna or cable system.



Grounding Component	
A	Electric Service Equipment
B	Power Service Grounding Electrode System (NEC Art 250, Part H)
C	Ground Clamps
D	Grounding Conductors (NEC Section 810-21)
E	Antenna Discharge Unit (NEC Section 810-20)
F	Ground Clamp
G	Antenna lead-in wire

Antenna grounding

COPYRIGHT & SAFETY STATEMENT

Power Lines

Do not locate the antenna near overhead light or power circuits, or where it could fall into such power or circuits.

WARNING: When installing or realigning an outside antenna system, extreme care should be taken to keep from touching such power lines or circuits. Contact with them could be fatal.

Contents

Chapter 1	1
Welcome to IMPACT PC!	1
Placement Tips.....	2
Chapter 2	3
Unpacking the Box	3
Selecting a Site	3
Check List.....	3
Chapter 3	4
System Overview	4
Front Panel.....	4
Rear Panel	6
Chapter 4	8
Computer Setup	8
Setting up the AC Input voltage selection	8
Connect the Power Cord	9
Connecting your PS/2 mouse and PS/2 keyboard.....	9
Connecting your monitor	10
Connecting the modem	10
Connecting the Ethernet.....	11
Connecting Your Printer	11
System Recovery	12
Appendix	17
System Specifications	17
Product Features.....	17
Technical Support	19

Chapter 1

Welcome to IMPACT PC!

Congratulations on your purchase of IMPACT PC!

You will find that the IMPACT PC has the following advantages:

- **Efficient Cooling:** The IMPACT's efficient cooling system and heat vents provide for better airflow, allowing the system to maintain a low temperature.
- **State-of-the-art Design:** The unique design of the IMPACT PC combines state-of-the-art electronics with a sophisticated, standard form factor that provides you with a personal computer, which is both fast and powerful.
- **The Perfect System:** Whether gaming at home or making presentations at the office, the IMPACT is the perfect system for all of your computing needs.

Please read this USER MANUAL carefully before unpacking and setting up your IMPACT PC. You can use this USER MANUAL as a comprehensive library for your IMPACT PC. Please refer to this USER MANUAL first if you encounter any problems. Please keep this booklet on hand and enjoy your IMPACT PC experience.



Note:

In order to set up the IMPACT PC efficiently, the BIOS setup menu has been modified slightly. Please refer to the system's BIOS setup menu on the screen.

Placement Tips

Your IMPACT PC should be set up correctly according to this user manual, and your own comfort and ergonomic needs. Please refer to the following tips to create a comfortable and healthy working environment for you:

1. **Adjustable Seat:** If you plan to use your IMPACT PC for extended periods, select a highly adjustable office chair with a five-pronged base. The seat and chair back should be adjustable, while you're sitting in the chair, for height and tilt, and forward/backward positioning. In addition, the lumbar area of your back should be supported by chair adjustments or a cushion. Arm rests should conform to your elbow height and shoulder width and should be used for support. For maximum comfort, vary positions frequently throughout the day, observe good posture when seated, and keep your head centered over your shoulders.
2. **Suitable monitor level:** Position your computer so that it is at arm's length away and the top third of the monitor viewing area is at eye level. This helps prevent eye and neck strain. To further reduce eye strain, close your eyes and/or refocus on something other than your computer screen at least twice an hour. Most monitors come standard with a detachable tilt-and-swivel base and an adjustable, rear-mounted foot, which will allow you to position the monitor exactly where you want it.
3. **Anti-glare coating:** Some monitor screens are constructed with a special anti-glare coating, which minimizes reflections that cause eyestrain and discomfort. To further reduce eyestrain, close your eyes and/or refocus on something other than your computer screen at least twice an hour.
4. **Adjustable task lighting:** When room lighting is dimmed, there may be insufficient light on documents or reference materials for comfortable reading. A well-lit room or a few adjustable, directional task lights will allow you to see your monitor screen and other materials clearly, causing the least amount of strain on your eyes.
5. **Appropriate position for wrist rest:** Keep your wrists straight and your forearms parallel to the floor while you are typing. If you use a wrist rest, use it only briefly while resting. Do not rest your hands on the table or on the wrist rest as you are typing. During long periods of typing, taking frequent breaks is recommended.

Chapter 2

Unpacking the Box

Selecting a Site

Before unpacking the IMPACT PC, prepare a suitable workspace for your computer. Choose a steady, level and clean surface near an electrical outlet. Also ensure that the computer has enough space around it to allow for proper airflow, especially at the rear of the computer near the fan. If the computer does not have enough ventilation, internal components can become overheated and may become damaged.

When opening the box, make sure not to damage it or the packing material, as you may need them for future shipping needs.

As you unpack the box, make sure the following components are included in the box and are in good condition. If you find that any of these components are missing or appear damaged, please contact the system dealer immediately.

Check List

- | | |
|---|---|
| <input checked="" type="checkbox"/> IMPACT PC System Unit | <input checked="" type="checkbox"/> Keyboard |
| <input checked="" type="checkbox"/> AC Power Cord | <input checked="" type="checkbox"/> Mouse |
| <input checked="" type="checkbox"/> Speaker | <input checked="" type="checkbox"/> Tel line |
| <input checked="" type="checkbox"/> User Manual | <input checked="" type="checkbox"/> Monitor |
| <input checked="" type="checkbox"/> Quick Start Guide | <input checked="" type="checkbox"/> Window® XP Manual |

Chapter 3

System Overview

Front Panel

Features are shown in Figure 3.1, and are described as follows:

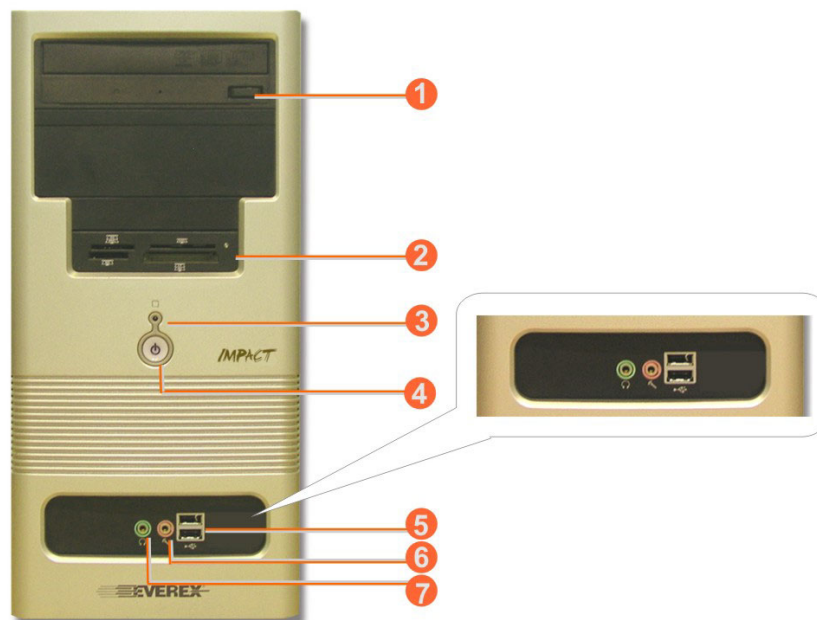


Figure 3.1



Note:

Depending on the model, your computer's components may vary and look slightly different than those pictured.

- 1. Optical Disc Drive Eject Button:**
Press this button to eject a 5.25-inch optical disc.

2. **Card Reader:**
Insert memory cards into these slots.
3. **Hard Disk Drive LED:**
This LED lights up to indicate that the hard drive is being accessed.
4. **Power Button & Power Indicator:**
Use this button to turn the IMPACT PC on and off. If the button is held down for one second, the system will enter Suspend mode. If held down for four seconds, system power will switch off. When lit, the Power indicator shows blue to indicate that system power is on.
5. **USB Port (2):**
Up to two USB devices can be connected via these ports; there are four additional ports at the rear – see below.
6. **Microphone-In Jack (pink):**
Plug the microphone into this jack for recording or voice-control functions.
7. **Speaker Jack (light green):**
Connect audio devices, such as headphones or speakers, to this jack

Rear Panel

Features are shown in Figure 3.2, and are described as follows:

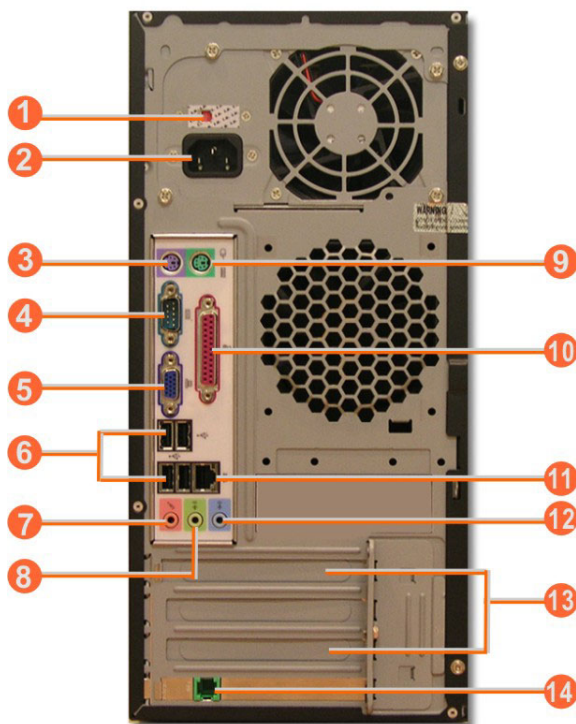


Figure 3.2

- 1. Power Socket Voltage Toggle Switch:**
This toggle switch allows you to select the system voltage (115 / 230 V) appropriate to your area.
- 2. Power Socket:**
This toggle switch allows you to select the system voltage (115 / 230 V) appropriate to your area. Connect the system unit's power cord to this socket; ensure that it is connected to a stable AC power source.



CAUTION:

Before you plug in the AC power cord, you must first check to ensure the voltage toggle switch setting is appropriate for your geographical area.

- 3. PS/2 Keyboard Connector (purple):**
Plug your PS/2 keyboard into this connector.
- 4. COM1 Port (turquoise):**
Connect serial (RS232) devices, such as a modem, to this port.
- 5. VGA Port:**
Connect your display monitor to this port.
- 6. USB Port (4):**
Connect USB peripheral devices to these ports to take advantage of the universal functionality and flexibility of Plug and Play (PnP) technology.
- 7. Microphone-In Jack (pink):**
Plug the microphone into this jack for recording or voice-control functions.
- 8. Line-Out Jack (light green):**
Connect audio devices such as headphones or speakers to this jack.
- 9. PS/2 Mouse Connector:**
Plug your PS/2 mouse into this connector.
- 10. Parallel Port (purple):**
Parallel devices, such as a printer or scanner, can be connected to this port.
- 11. RJ45 LAN Connector (1):**
For connecting your LAN, allowing you to access network services or the Internet.
- 12. Line-In Jack (light blue):**
Connect audio sources, such as external CD, players to this jack for recording on your computer or playback through the Line-Out device.
- 13. Expansion Slot Covers:**
These covers can be removed to install add-on cards, as described later.
- 14. Modem ports**
Connect your phone line in and your RJ11 cable out the wall jack.

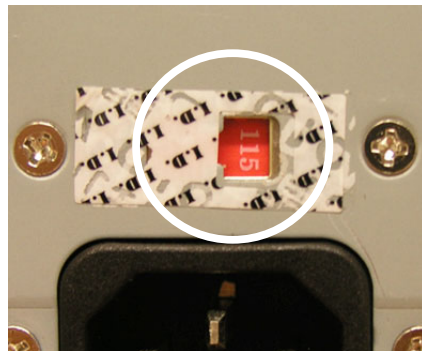
Chapter 4

Computer Setup

IMPACT is easy to be set up. After remove the IMPACT from shipping box, please follow the steps below to finish its setup.

Setting up the AC Input voltage selection

The AC Input Voltage Selection can be found at the back of your computer. There are two settings (115V or 230V) for the system to operate. Please set the AC input voltage to 115V (The default is 115V.)

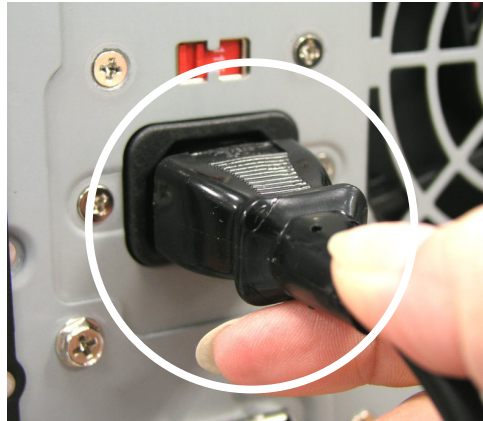


Warning:

1. Please must turn off your computer before setting up your computer.
2. Do not remove the protective label to change AC Input Voltage, or it will damage your computer seriously.

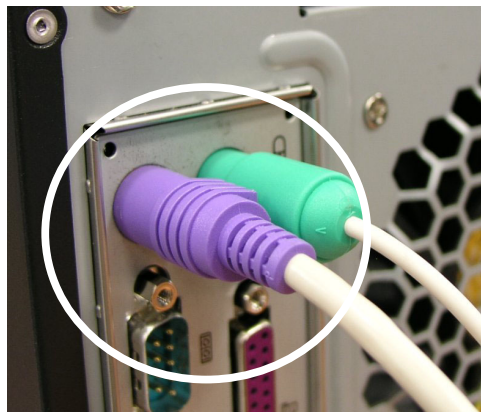
Connect the Power Cord

Connect the power cable to the computer and then plug into a power supply.



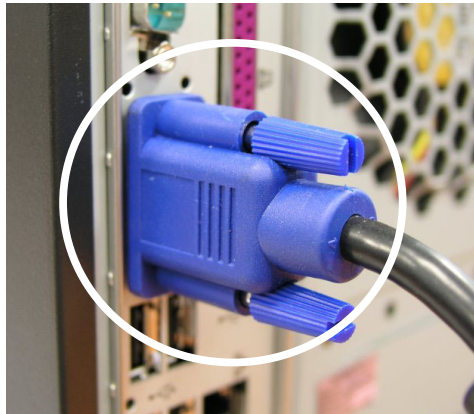
Connecting your PS/2 mouse and PS/2 keyboard

PS/2 Mouse and P/S2 keyboard can be found at the back of your computer. They can be identified by their colors. Plug the mouse and keyboard to their respective ports.



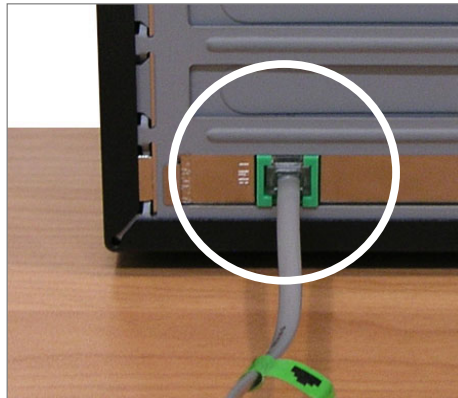
Connecting your monitor

Monitor port can be found at the back of your computer. It can be identified easily by color of navy blue.



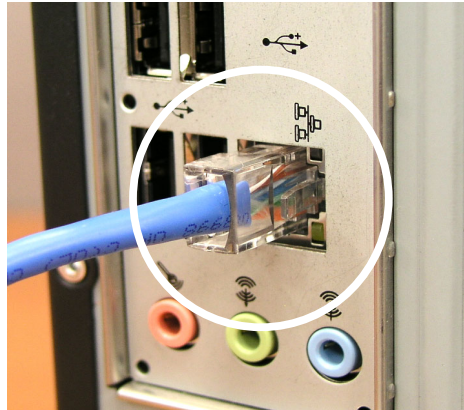
Connecting the modem

Connect your phone line in and your JR11 cable out to the wall jack.



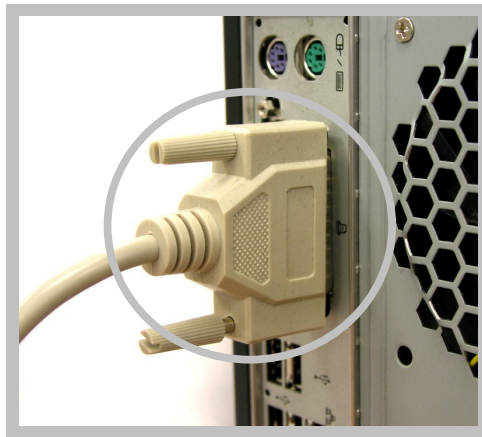
Connecting the Ethernet

Connect the RJ45 cable to the LAN port to get access to internet.



Connecting Your Printer

Connect the printer cable to the printer port at the back of your computer. Please make sure that both printer and computer are turned off.



System Recovery

Here there are 2 terms defined:

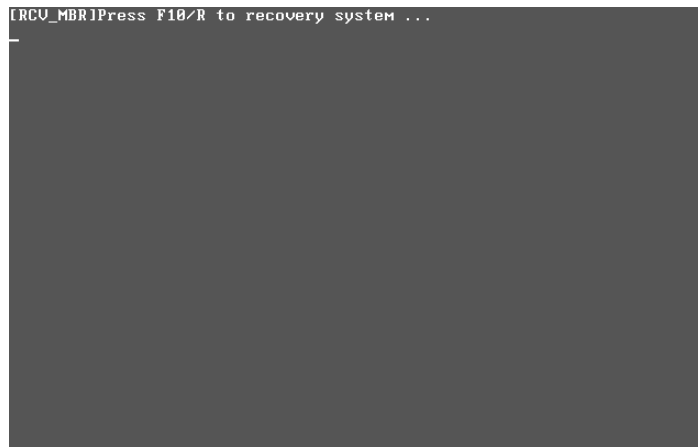
Recovery Partition

– shortened as R-P in later paragraphs, the R-P is preinstalled by the manufacturer on hard disk for user to restore his/her system in case system crashes later! R-P is hidden!

User Partition

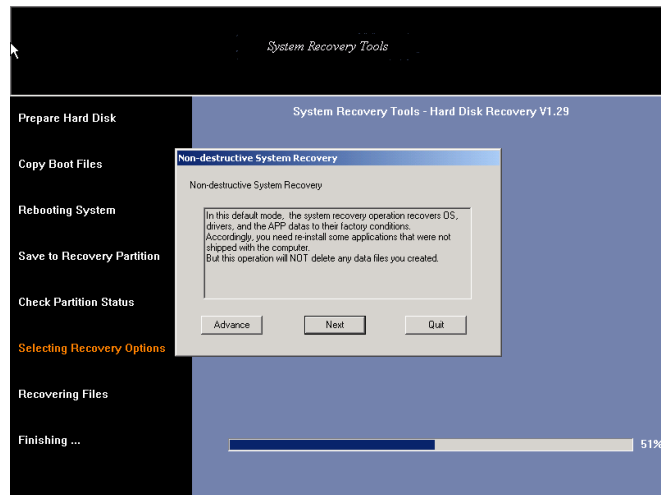
- shortened as U-P in later paragraphs, the U-P stores the user data added later after end user gets the system!

When system boots, user will see the following message:

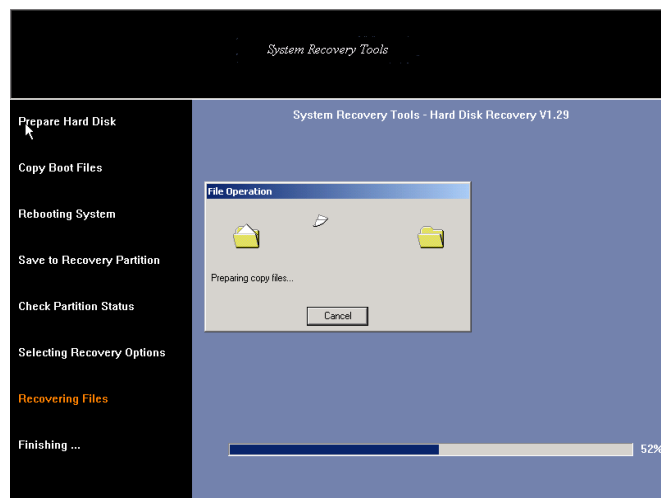


If the user presses 'F10' or 'R'(hot keys), the local recovery begins....What the user should be aware of is the 'Selecting Recovery Options'. The following dialog will appear:

SYSTEM RECOVERY

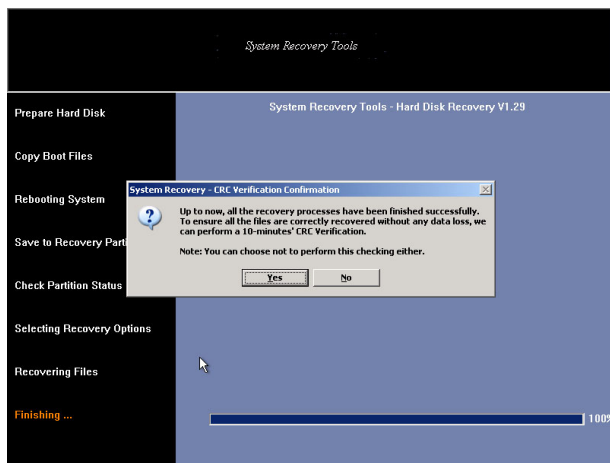


The default mode is non-destructive, in this mode, the data in U-P stays intact, if the user clicks 'Next', the non-destructive recovery will take place, see the following picture:

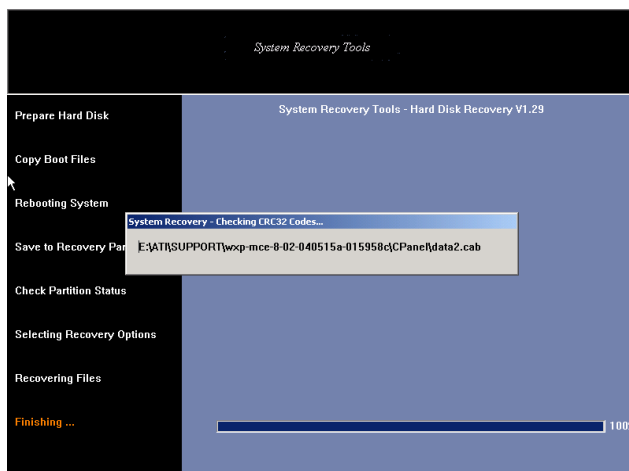


And after all recovery process have finished, a CRC-check request is prompted, and user can make his/her decision.

IMPACT PC USER'S MANUAL



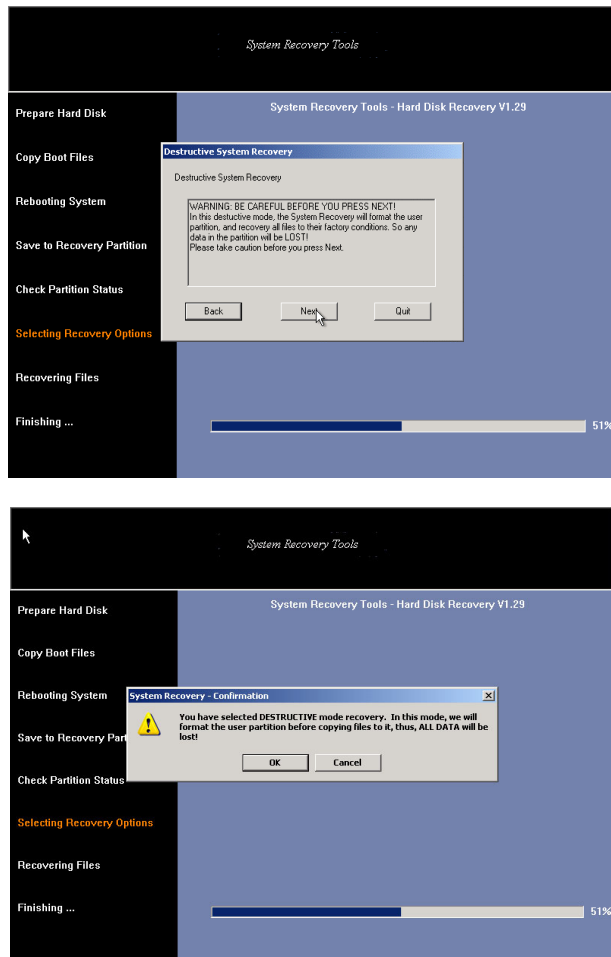
If user clicks 'Yes', the CRC verification process will be running:



After it is done, the system reboots!

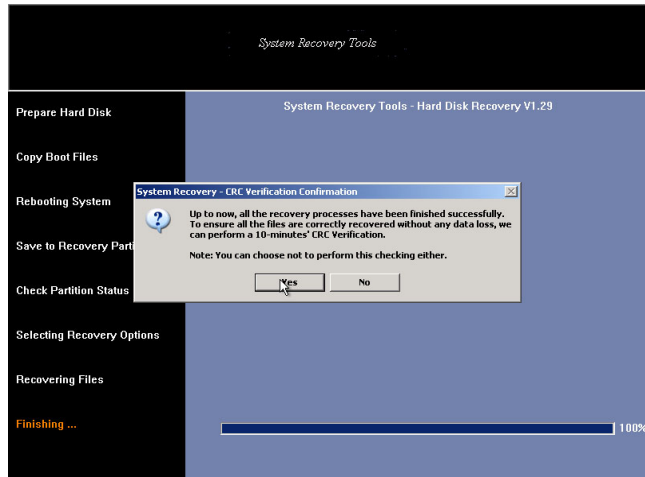
However if the user chooses 'Advance' in the dialog in 'Selecting Recovery Options', that means destructive mode, both the U-P will be destroyed! So user should choose this option with caution!

SYSTEM RECOVERY

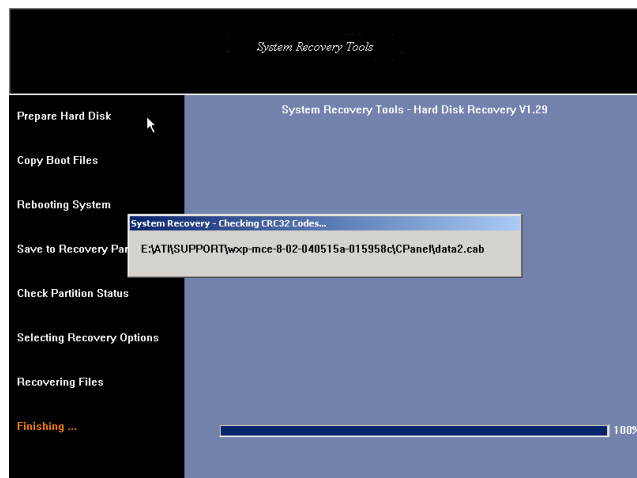


Afterwards, a CRC verification confirmation screen will appear, and user makes his/her choice!

IMPACT PC USER'S MANUAL



If user clicks 'Yes', the CRC check process is running....



After CRC check is done, system reboots!

Appendix

System Specifications

Product Features

Product Features	
Processor	
	● AMD mobile Athlon™ 64 3400+
Monitor	
	● 17 Inch TFT LCD Panel
System memory	
	● DDR PC3200 512MB x1
Storage	
	● 120G HDD 7200 rpm
Optical disk Drive	
	● DVD Dual
Video	
	● Embedded in nVIDIA® GeForce 6100GPU
Audio	
	● Embedded in nVIDIA® nForce 410MCP ● Audio codec: 5.1 channel - Realtek ACL653
Card Reader	
	● 8-in-1 Card Reader
I/O Ports	
	Front Panel ● USB2.0 x2 ● Headphone Line-out x1 ● Microphone Line-in x1 ● LED Indicators:

Product Features	
	Power-On/Off & Suspend activity indicator HDD activity indicator Rear Side <ul style="list-style-type: none"> ● USB2.0 x4 ● PS/2 Keyboard & PS/2 Mouse ● VGA Port ● Parallel Port ● Serial Port ● 10/100Base-TX Fast Ethernet LAN port ● 56K data/fax Modem port ● AC power connector (AC-In) x 1
Drive Bays	
	<ul style="list-style-type: none"> ● 5.25-inch standard optical drive x 2
Expansion Card	
	<ul style="list-style-type: none"> ● 3 x PCI slots ● One PCI Express x16 slot
Operating System	
	<ul style="list-style-type: none"> ● Microsoft® Window XP Home Edition
Software - preinstalled	
	<ul style="list-style-type: none"> ● CyberLink PowerDVD 6 ● CyberLink Power2GO 4 ● PowerBackup 2.0 ● PowerDVD Copy 1.0 ● PowerProducer 3.2 (Trial Version) ● Media@Show 3.0 (Trial Version) ● Music Match ● Windows® Media Player ● Windows® WordPad ● Norton Internet Security™ 2006
Warranty	
	<ul style="list-style-type: none"> ● 2 years

Technical Support

- For the latest Drivers and Support Documents or to chat online with a Live Technician visit **www.everex.com**
- To contact Technical Support via email, send your **User Name, Model, Serial Number** and a brief **Description** of the issue at hand to techsupport@everex.com
- To register your product visit www.everex.com or simply email your **User Name** (first and last), **Model** (Everex IMPACT GA3400, etc.) and **Serial Number** to customerservice@everex.com. Please use “Product Registration – GAXXXX” as your email subject.
- To speak with an Everex Technical Support Representative call our 24-Hour response team at **1-866-850-8835** (toll-free)

Please complete the following information before contacting Everex Technical Support:

User Name : _____

Model (Everex IMPACT GA3400, etc.): _____

Serial Number : _____

Problem Description : _____

Everex Systems, Inc., 440 Mission Court, #250, Fremont CA 94539,

