

# PROTECH™

*Quality HVAC and Plumbing Parts and Supplies*

## **\* HIGHLIGHTS \***

- New Products
- FREE US Motors Programming Module
- Competitive Pricing
- Contractor REBATE on A/C Security Cage
- FREE Mastercool bag offer
- CLOSEOUT PRICES



**ADMOR HVAC  
PRODUCTS, INC.**  
*"HAWAII'S HVAC SUPERSTORE"*

**2014 spring  
preseason promotion**  
**february 15 – april 30**

# Product Highlights...



## **Flood Prevention Switches**

see p14 for details



## **Zone Control Kit**

see p4 for details



## **Rescue Select Blower Motors**

see p8 or p29 for details

**FREE**

**KIT41 PROGRAMMING MODULE**

WITH PURCHASE  
OF 20 RESCUE SELECT  
MOTORS



## **Combustion Analyzer & Digital Manometer**

see p28 for details



## **Digital Multimeter**

see p28 for details





## AC System Analyzer

see p28 for details

**FREE**  
**MASTERCOOL BAG**  
WITH PURCHASE OF 52270  
OR 52280 KIT



## Refrigerant Recovery

see p20 or p29 for details

## Solenoid Test Magnet

see p19 for details



## Compact Calculator

see p21 for details

## Measurement Kit

see p28 for details



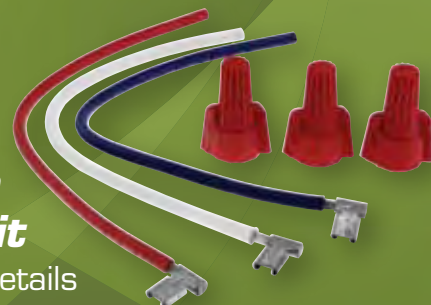
## ECM Accessories

see p20 for details



## Compressor Repair Kit

see p16 for details



To suggest new products, contact Ed Fleet at [ed.fleet@rheem.com](mailto:ed.fleet@rheem.com).  
For promotions and marketing programs, contact Ofelia Reddick at [ofelia.reddick@rheem.com](mailto:ofelia.reddick@rheem.com).



# THERMOSTATS & ALARMS

## Wireless Control System – Pro1 IAQ

- wireless programmable touchscreen thermostat communicates wirelessly to the base module
- up to four indoor remotes and one outdoor temperature sensor can be connected to the wireless thermostat
- base module is hardwired to the heating and cooling system like a wired thermostat
- outdoor sensor can be used to set a dual fuel balance point, which eliminates the need for a fossil fuel kit



PART NO	DESCRIPTION	CASE QTY	LIST
PD411093	T955WH programmable touchscreen w/humidity control (GE: 2H/2C, HP: 3H/2C)	5	341.64
RZ251W	remote indoor sensor	5	123.76
RZ250W	remote outdoor sensor	5	88..88
PD411086	WW160W wireless wire extender replaces 24V wire, 7 inputs/outputs includes both input and output base modules	5	255.91

## Zone Control Kit – Pro1 IAQ

- includes all required components required for Two Zone wireless zoning install
- includes one Z955W Master Control, one RZ251 Remote Zone Controller and two Z260W Damper Modules
- recommended ZDA250W Discharge Air Sensor and optional RZ250W Outdoor Sensor sold separately



PART NO	DESCRIPTION	LIST
Z2K955WDA	wireless zoning kit - 2-zone	612.00

## 900 Series Programmable – Pro1 IAQ

- our best thermostat
- modern premium design
- very large touchscreen display



PART NO	DESCRIPTION	CASE QTY	LIST
PD411066	T905 1H/1C heat-cool or heat pump 7-day or 5/1/1	10	169.24
PD411067	T925 3H/2C heat pump, 7-day or 5/1/1	10	186.18
PD411090	T955 2H/2C heat-cool, 3H/2C heat pump	10	200.24

## 800 Series Programmable – Pro1 IAQ

- sleek “widescreen” design with 8 sq. in. display
- many options can be configured on the job



PART NO	DESCRIPTION	CASE QTY	LIST
PD411064	T805 1H/1C heat-cool or heat pump 7-day or 5/1/1	10	109.82
PD411065	T855 2H/2C heat-cool or 3H/2C heat pump 7-day or 5/1/1	10	135.42

## 800 Series Nonprogrammable – Pro1 IAQ

- sleek “widescreen” design with 8 sq. in. display
- many options can be configured on the job



PART NO	DESCRIPTION	CASE QTY	LIST
PD411088	T801 1H/1C heat-cool or heat pump	10	105.52

## 700 Series Programmable – Pro1 IAQ

- large display
- feature set for residential applications
- great value



PART NO	DESCRIPTION	CASE QTY	LIST
PD411061	T705 1H/1C heat-cool or heat pump, 5/1/1	10	68.00
PD411062	T715 2H/2C heat-cool, 5/1/1	10	92.52
PD411087	T725 2H/1C heat pump	10	86.94
PD411085	T755 2H/2C heat-cool, 3H/2C heat pump	10	102.45
PD411089	T755H 2H/2C heat-cool, 3H/2C heat pump w/humidity control	10	134.33
PD411097	T755S 3H/2C heat-cool, 3H/2C heat pump	10	156.48

## 700 Series Nonprogrammable – Pro1 IAQ

- large display
- feature set for residential applications
- great value



PART NO	DESCRIPTION	CASE QTY	LIST
PD411060	T701 1H/1C heat-cool or heat pump	10	60.94
PD411063	T721 2H/1C heat pump, 5/1/1	10	80.58
PD411072	T771 1H/1C heat-cool	10	57.55

## 600 Series Wireless – Pro1 IAQ

Allows you to control temperature away from the heat/cool source. Affordable comfort control. High and low speed fan

- heating and cooling set-point limits
- hardwire or battery
- electric or gas configurable
- large blue backlight screen



PART NO	DESCRIPTION	CASE QTY	LIST
PD411103	T631W-2 1H/1C heat-cool, 2H/1C heat pump nonprogrammable	10	215.27

## Wall Plate – Pro1 IAQ

PART NO	DESCRIPTION	CASE QTY	LIST
PD411073	T119 universal Pro1 Plastic Wall Plate	5	5.39

## 600 Series Programmable – Pro1 IAQ

- large display
- feature set for residential applications
- great value



PART NO	DESCRIPTION	CASE QTY	LIST
PD411095	T605-2 1H/1C heat-cool or heat pump, 5/1/1	10	65.88

## 600 Series Nonprogrammable – Pro1 IAQ

- large display
- feature set for residential applications
- great value



PART NO	DESCRIPTION	CASE QTY	LIST
PD411092	T601 1H/1C heat-cool or heat pump	10	51.82
PD411094	T601-2 1H/1C heat-cool or heat pump	10	59.61
PD411096	T621-2 2H/1C heat pump	10	76.76

## Blue 2" – White-Rodgers

- LCD display with backlight
- compressor short cycle protection
- 5-year limited warranty



PART NO	DESCRIPTION	LIST
1F89-0211	2H/1C, nonprogrammable	139.70

## 70 Series Digital – White-Rodgers **CLOSEOUT**

- large LCD with backlight
- celsius or fahrenheit
- includes B/O terminal
- 5-year limited warranty



PART NO	DESCRIPTION	LIST
1F78-144	1H/1C single-stage nonprogrammable, vertical	70.70
1F78-151	1H/1C single-stage, 5+2 programmable	82.58

**WHILE SUPPLIES LAST**

## Sampling Tubes – System Sensor

- no tools required – just snap in front or back
- for InnovairFlex series



PART NO	DESCRIPTION	CASE QTY	LIST
DST1	duct widths up to 1 ft.	10	9.06
DST1.5	duct widths 1 – 2 ft.	10	12.09
DST3	duct widths 2 – 4 ft.	10	17.55

## Duct Smoke Detectors – System Sensor

- integrated low-flow technology
- versatile mounting options: square or rectangular configurations
- air velocity rating from 100ft/minute to 4,000ft/minute



PART NO	DESCRIPTION	LIST
D4120	photoelectric, 4-wire	239.36
D4120W	photoelectric NEMA4, 4-wire	337.00

## Duct Smoke Detector – Air Products

- clear cover fitted with 4 captive screws
- large terminal connection screws
- dust filtering in detector head
- no additional screens or filters to clean
- standard "off the shelf" UL268 smoke detector head
- interchangeable "plug-in" photo-electric or ionization heads
- compatible with building automation and fire alarm



PART NO	DESCRIPTION	LIST
849046	SL2000-N duct smoke detector	259.73

## Duct Smoke Detector

- interchangeable "plug-in" photoelectric or ionization head
- operating voltages: 230VAC, 115VAC, 24VAC, 24VDC
- easy mounting without cover removal
- UL, CUL, CSFM, and MEA Listed



PART NO	DESCRIPTION	LIST
SM-501-N	smoke detector, ionization	241.09

## Carbon Monoxide Monitors – Kidde

### AC POWERED

- tamper resistant – constant alarm if unit is unplugged or comes loose from outlet
- 9v battery back-up
- easy installation
- 85dB alarm
- 5-year limited warranty



PART NO	DESCRIPTION	CASE QTY	LIST
21006462	CO Alarm plug-in w/battery	6	53.03

### BATTERY POWERED

- battery operated (3 AA included)
- low battery signal
- battery lockout system deters covering battery compartment without installation of batteries



PART NO	DESCRIPTION	CASE QTY	LIST
21008908	CO Alarm battery operated	6	64.39

## W51 Universal Motors – PROTECH™

The PROTECH™ Universal Series of motors is a line of HVAC replacement motors for outdoor condensing units and indoor air handling units. Designed for a wide variety of aftermarket HVAC replacement applications, the PROTECH Universal Series motors are manufactured under strict quality standards at one of the world's largest and most modern motor production facilities. Every motor undergoes a variety of stringent tests before it leaves the assembly line. Additional internal testing and review by our engineering team are conducted to ensure the PROTECH Universal Series of motors meet our standards. The W51 Series of motors can be easily selected for any application using the W51 "smart part" numbering system. All you need to know is the application (such as fan or blower), the horsepower, the voltage, and the speed settings. Detailed specifications and drawings for each motor are also available on [Rheemparts.com](http://Rheemparts.com) or [Ruudparts.com](http://Ruudparts.com).

**PROTECH™**  
UNIVERSAL



### TOTALLY ENCLOSED CONDENSER FAN MOTORS

- thru-bolt or belly band mounting
- shell-screw mounting
- sleeve bearing
- 5th wire reversing feature
- 48 frame, 5.5" diameter
- 60hz
- operates in all positions
- 1/2" shaft diameter
- 6.5" shaft length

PART NO	HP	VOLTS	RPM	DESCRIPTION	LIST
W51-MHCJA1-01	1/6–1/3	208–230	1075	multi-horsepower universal condenser fan motor	136.42
W51-16CJA1-01	1/6	208–230	1075	universal condenser fan motor	111.36
W51-14CJA1-01	1/4	208–230	1075	universal condenser fan motor	124.79
W51-13CJA1-01	1/3	208–230	1075	universal condenser fan motor	147.61
W51-12CJA1-01	1/2	208–230	1075	universal condenser fan motor	163.15

### DIRECT DRIVE BLOWER MOTORS

- thru-bolt or belly band mounting
- sleeve bearing
- 5th wire reversing feature
- 48 frame
- 60hz
- operates in all positions
- 1/2" shaft diameter
- 4.5" shaft length



PART NO	HP	VOLTS	RPM	DESCRIPTION	LIST
W51-14BAA3-01	1/4	115	1075/950/850	universal blower motor	116.06
W51-13BAA3-01	1/3	115	1075/950/850	universal blower motor	126.85
W51-12BAA3-01	1/2	115	1075/950/850	universal blower motor	165.73
W51-34BAA3-01	3/4	115	1075/950/850	universal blower motor	163.12
W51-14BJA3-01	1/4	208–230	1075/950/850	universal blower motor	125.18
W51-13BJA3-01	1/3	208–230	1075/950/850	universal blower motor	132.09
W51-12BJA3-01	1/2	208–230	1075/950/850	universal blower motor	149.12
W51-34BJA3-01	3/4	208–230	1075/950/850	universal blower motor	167.30

## Motors – TripSaver

TripSaver Motors are three motors designed with such a high degree of versatility that they will cover the vast majority of applications a serviceman might encounter requiring a direct drive motor. A must for service vehicle stocking.

- 4 speed taps
- rotation reversible
- 5th wire reversing feature on condenser fan motors
- runs with 5, 7.5 & 10 mfd/370v AC capacitors
- 36" leads with easy to use flag QC terminals
- operates in all positions
- mounts by belly band, thru-bolts or shell holes
- 48 frame, 5.5" diameter



PART NO	HP	VOLTS	RPM	DESCRIPTION	LIST
51-23012-41	1/6 – 1/2	115	1075	4 speed furnace motor	193.12
51-23022-41	1/6 – 1/2	208–230	1075	4 speed air handler motor	193.94
51-23053-21	1/6 – 1/3	208-230	1075	2 speed condenser fan motor	179.33

## Condenser Fan Motors – PROTECH™

These motors are suited for a wide range of applications.

- reversible
- 48 frame
- 36" leads
- PSC
- single phase
- reset protection



PART NO	HP	VOLTS	RPM	DESCRIPTION	LIST
51-23055-12	1/5	208–230	825	1 speed	162.76
51-23055-11	1/5	208–230	1075	1 speed	141.85
51-23054-11	1/4	208–230	1075	1 speed	160.58
51-23053-11	1/3	208–230	1075	1 speed	158.73
51-23052-11	1/2	208–230	1075	1 speed	187.27

## Blower Motors – PROTECH™

These motors are suited for a wide range of applications.

- reversible, 48 frame, PSC
- electrically reversible - Molex plug
- extended mounting studs
- automatic reset protection
- 36" leads with flag connectors
- sleeve bearing motor for all angle applications



PART NO	HP	VOLTS	RPM	DESCRIPTION	LIST
51-23024-31	1/4	208–230	1075	3 speed	180.70
51-23023-31	1/3	208–230	1075	3 speed	188.64
51-23012-31	1/2	115	1075	3 speed	226.03
51-23017-42	3/4	115	1075	4 speed	230.76



## Motor Programmer – PROTECH™

The PROTECH Motor Programming system allows field programming of ECM, Eon, Endura Pro and X-13 motors from blank (unprogrammed) motors. Using this system, over 200 different programmed motors and modules can be created on an as-needed basis. Only about a dozen blank motor and module part numbers need to be stocked, thereby saving valuable inventory dollars while increasing service levels to your customers. The system consists of the PROTECH Motor Programmer software and certain interface cables and other hardware peripherals.

- contains the following items:
  - USB port interface box - connects the computer to the motor being programmed
  - cables for ECM/Eon and Endura Pro/X-13 motor connectors
  - thermal printer - no ink cartridges required
  - two rolls of spare labels - additional labels available as part number 864040
- system requirements:
  - Microsoft Windows - version XP, Vista, 7, or 8
  - Microsoft .Net Framework v3.5
  - an active connection to the internet



PART NO	DESCRIPTION	LIST
PD510011	Kit for PROTECH Motor Programmer	1636.36

## Rescue Select Blower Motors – U.S. MOTORS

The RESCUE Select is an ECM aftermarket motor that replaced OEM constant torque blower motors.

- no need to wait for the OEM motor to be ordered, customized programming performed at the store counter
- replaces X-13, Endura Pro and SelectTech constant torque ECM motors
- patented high efficiency design with smooth, quiet start up
- wired to OEM equipment using the existing connection for ease of installation
- direct OEM replacement – programmed torque values set to match OEM performance
- 6000V surge protection – more the double the protection of any OEM motors
- fully potted electric module for superior moisture protection
- motor and module technology create smooth, quiet speed changes
- two-year limited warranty



PART NO	HP	VOLTS	RPM	DESCRIPTION	LIST
KIT41				SelectTech / RESCUE Select Programming Module	1219.61
6630RS	1/3–1/2	120V		RESCUE Select Blower Motor	618.09
6631RS	1/3–1/2	208–230V		RESCUE Select Blower Motor	618.09
6640RS	3/4	120V		RESCUE Select Blower Motor	718.52
6641RS	3/4	208–230V		RESCUE Select Blower Motor	718.52
6650RS	1	120V		RESCUE Select Blower Motor	856.15
6651RS	1	208–230V		RESCUE Select Blower Motor	856.15

## Rescue Condenser Motors – U.S. MOTORS

You may not know what kind of motor you will need when you get to the job, but with the RESCUE motors on hand, you know you'll have one that will work.

- replaces a range of different horsepower ratings and applications



PART NO	HP	VOLTS	RPM	DESCRIPTION	LIST
5464	1/6–1/3	208–230	825	2 speed, reversible, 48 inch leads	256.52
5462	1/6–1/3	208–230	1075	2 speed, reversible, 48 inch leads	195.67
5465	1/5–1/2	208–230	1075	2 speed, reversible, 48 inch leads	251.94
5460	1/6–1/2	120	1075	4 speed, reversible, 36 inch leads	208.58
5461	1/6–1/2	208–230	1075	4 speed, reversible, 36 inch leads	212.82



## Wholesale Condenser Motors – U.S. MOTORS

- totally enclosed air over
- single phase, 48 frame
- high performance SAB bearing, 60°C (140°F) rated ambient
- reversible PSC, capacitor not included
- extended mounting studs and leads



PART NO	HP	VOLTS	RPM	DESCRIPTION	LIST
1859	1/6	208–230	1075	1 speed, reversible	144.55
1860	1/4	208–230	1075	1 speed, reversible	150.24
1861	1/3	208–230	1075	1 speed, reversible	160.27
1862	1/2	208–230	1075	1 speed, reversible	177.48
1868	3/4	208–230	1075	1 speed, reversible	219.03

## Wholesale Blower Motors – U.S. MOTORS

- open drip-proof air over
- single phase, 48 frame
- high performance SAB bearing, 25°C (104°F) rated ambient
- reversible PSC, capacitor not included
- extended mounting studs and leads



PART NO	HP	VOLTS	RPM	DESCRIPTION	LIST
1863	1/4	115	1075	3 speed, reversible	160.27
1864	1/3	115	1075	3 speed, reversible	164.58
1865	1/2	115	1075	3 speed, reversible	198.97
8904	3/4	115	1075	3 speed, reversible	221.30
1971	1/4	208–230	1075	3 speed, reversible	163.18
1972	1/3	208–230	1075	3 speed, reversible	168.88
1973	1/2	208–230	1075	3 speed, reversible	206.09
8905	3/4	208/230	1075	3 speed, reversible	222.73

## PEP Condenser Fan Motors – U.S. Motors

- high efficiency PSC motors
- patented design is up to 76% more efficient, saving up to 70w over standard PSC motors
- rated for 158°F (70°C) ambient temperature
- reversible; 48" leads for all positions



PART NO	HP	VOLTS	RPM	DESCRIPTION	LIST
1859PEP	1/6	208–230	1075	1 speed	251.94
1860PEP	1/4	208–230	1075	1 speed	191.67
1861PEP	1/3	208–230	1075	1 speed	201.27
1862PEP	1/2	208–230	1075	1 speed	213.58
3736PEP	1/4	460	1075	1 speed	236.85
3737PEP	1/3	460	1075	1 speed	426.64
3738PEP	1/2	460	1075	1 speed	421.73

## Blower Motors – Genteq Evergreen

The Evergreen is the world's first retrofit ECM blower motor. Contractors can now replace a PSC motor with the Evergreen and give consumers the comfort, efficiency and better airflow control of ECM, in an easy-to-install replacement motor.

- works well with IAQ products, like high-efficiency air cleaners and HEPA filters with higher static pressure resistance
- uses up to 25% fewer watts in operating mode and up to 74% fewer watts than a PSC motor in constant fan
- Rotation Sensing Technology™ automatically configures motor to rotate in the correct direction
- 4 speed selections for heating and cooling
- low speed constant fan
- filtration / zoning system enabler
- 2-year limited warranty
- high performance SAB bearing, 25°C (104°F) rated ambient
- reversible PSC, capacitor not included
- extended mounting studs and leads



PART NO	HP	VOLTS	RPM	DESCRIPTION	LIST
5SME39HXL110	1/2	120–230	1075	variable speed, reversible	579.91
5SME39SXL111	1	120–230	1075	variable speed, reversible	700.30

PROTECH,  
your source  
for quality  
OEM  
replacement  
parts,  
after-market  
parts and  
supplies.

## Electronic Air Cleaners – PROTECH™

- protects heating and cooling systems
- removes dirt, dust and smoke
- suitable for all types of forced-air systems



PART NO	DESCRIPTION	LIST
84-25052-07	5" electronic, 1400 cfm, 16x25	790.45
84-25052-08	5" electronic, 2000 cfm, 20x25	950.09
84-25052-09	5" electronic, 20x20	839.39

## Dynamic Air Cleaners

- low resistance to air flow
- no ozone produced during operation
- low power consumption



PART NO	DESCRIPTION	LIST
84-20x20-1	20x20x1 panel filter	463.30
84-20x25-1	20x25x1 panel filter	460.55
84-16x25-1	16x25x1 panel filter	460.55
84-16x20-1	16x20x1 panel filter	460.55
84-16x30-1	16x30x1 panel filter	486.79
84-28x34-1	28x34x1 panel filter	671.24
84-20x30-1	20x30x1 panel filter	460.55
84-12x20-1	12x20x1 panel filter	500.97
84-1RF-20x25-1	20x25x1 panel filter	506.64
84-12x25-1	12x25x1 panel filter	626.21
84-14x20-1	4x20x1 panel filter	460.55
84-24x24-1	24x24x1 panel filter	460.55
84-24x30-1	24x30x1 panel filter	460.55
84-25x25-1	25x25x1 panel filter	511.15

SIMILAR SAVINGS ON ALL SIZES

## Media Air Cleaners – PROTECH™

- easy duct-mount installation
- removes up to 95% airborne particles
- fits a wide variety of equipment



PART NO	DESCRIPTION	LIST
84-25050-01	5" media, 2000 cfm, cross ref Air Bear 20x25	162.76
84-25050-05	5" media, 1400 cfm, cross ref Air Bear 20x20	162.76
84-25050-06	5" media, 1400 cfm, cross ref Air Bear 16x25	162.76

## Media Replacement Filters – PROTECH™

- universal application
- fits most popular brands
- moisture resistant synthetic media



PART NO	DESCRIPTION	CASE QTY	LIST
54-25051-01	20x25x5, 19.75x24.25x5 actual replaces 84-25050-01, 84-25050-03	3	34.64
54-25051-02	16x25x3, 15.75x24.25x3 actual replaces 84-25050-06	3	40.15
54-25051-03	20x20x5, 19.75x20.75x5 actual replaces HW FC100A1011, 84-25050-05	4	39.70
54-25051-04	16x25x5, 15.75x24.25x5 actual replaces 84-25050-06	3	32.45
54-25051-10	20x25x5, 19.75x24.625x4.25 actual replaces HW FC100A1037	3	39.36
54-25051-11	16x20x5, 15.75x19.75x4.25 actual replaces HW FC100A1003	3	40.00
54-25051-12	16x25x5, 15.75x24.25x5 actual replaces HW FC100A1029	3	44.64
54-25051-13	20x20x5, 19.75x20.75x5 actual replaces HW FC100A1011, 84-25050-05	3	45.06

## Return Grill Filters CLOSEOUT

- mounts in most third-party return filter grilles
- high efficiency alternative to one inch filters
- easy installation; pre-assembled filter easily inserts into and out of existing return grille
- exclusive frame design nests properly into place
- low pressure drop



PART NO	DESCRIPTION	CASE QTY	LIST
PD540022	20x25, MERV 10	5	65.15
540023	20x30, MERV 10	5	61.70
540024	16x25, MERV 8	5	38.45
PD540025	20x20, MERV 8	5	44.00
PD540026	20x25, MERV 8	5	41.88
540027	20x30, MERV 8	5	44.03

WHILE SUPPLIES LAST

**PROTECH™**  
Quality HVAC and Plumbing Parts and Supplies

## Right Angle Media Air Cleaner – PROTECH™

- filters angled to further maximize surface area
- quick and easy mounting for installations that require a 90° duct adapter
- platinum metallic paint
- rugged cabinet construction



PART NO	DESCRIPTION	LIST
84-25050-03	right angle media air cleaner, 2000 cfm	314.97

## Filter Bases – McDaniel Metals

- spring-hinged door for easy access
- 22 gauge construction
- gasketed door ensures tight seal
- individually boxed
- accepts standard filters
- rounded corners for safer handling



PART NO	DESCRIPTION	LIST
BLE2-1620-2	electric (baseline 2.0), electric AHU, 2 in.	102.45
BLE2-2020-2	electric (baseline 2.0), electric AHU, 2 in.	112.15
BLG2-1425-2	gas (baseline 2.0), gas furnace, 2 in.	101.48
BLG2-1625-2	gas (baseline 2.0), gas furnace, 2 in.	102.45
BLG2-2025-2	gas (baseline 2.0), gas furnace, 2 in.	112.15
54-1620-E3	filter base, electric upflow, 3 in.	115.03
54-1625-G3	filter base, gas upflow, 3 in.	115.03
54-1625-G6	filter base, gas upflow, 6 in.	131.76
54-2025-E6	filter base, electric upflow, 6 in.	145.33

SIMILAR SAVINGS ON ALL MCDANIELS METALS FILTER BASES

## Energy & Heat Recovery Ventilators – PROTECH™

- best heat and air flow range in its category
- smart defrost system to prevent freeze-ups
- shipped with multiple logo plates
- provides a constant, controlled supply of fresh air year-round
- easily removable, washable, metal-framed filters



PART NO	DESCRIPTION	LIST
84-ERV100	100 cfm, 120v, 1/12 hp, 147w, 1600/1300/1050 rpm	1795.73
84-HRV100	100 cfm, 120v, 1/12 hp, 147w, 1600/1300/1050 rpm	1965.15

## Humidifiers – PROTECH™

Models with water saving controls self adjust to compensate for variations in temperature, airflow and water pressure; providing maximum performance and water savings regardless of system conditions.

- Includes self-piercing saddle valve, solenoid valve, humidistat

### BYPASS

Uses an integral fan to blow air directly over a moisture filled pad into the air stream. Ideal for heat pump applications.



PART NO	DESCRIPTION	LIST
84-25054-09	bypass, without water saver	293.94
84-25054-10	bypass, with water saver	420.03

### FLOW-THRU

Directs the airflow from the ductwork to pass through a moisture filled pad, so the air stream picks up moisture evenly and distributes it throughout the home.



PART NO	DESCRIPTION	LIST
84-25054-11	fan power flow-thru without water saver	472.73
84-25054-12	fan power flow-thru with water saver	536.52

## Dehumidifiers – Trion

- piped drain (NPT) - reduced maintenance
- easily removable access panels
- free standing - for crawl spaces and basements
- 75 or 95 pint per day capacity
- ducted - for whole-house HVAC systems
- round supply and discharge collars



PART NO	DESCRIPTION	LIST
D75	whole house dehumidifier, 75 pint	2249.36
D95	whole house dehumidifier, 95 pint	2785.42

Spring  
preseason  
promotion  
february 15  
thru  
april 30, 2014.





## Don't Take Chances – Get the Real McCoy Demand Genuine PROTECH® Replacement Parts

Why? Because there is no substitute for the quality and performance of original factory equipment that is certified by UL and CSA to meet published OEM specifications.

**Only PROTECH contactors fully satisfy Rheem Manufacturing Company's performance standards and are certified and warranted by Rheem.**

Certified to the highest level of UL810; tested approved for 5,000 AFC. Exact OEM fit for Rheem, Ruud and WeatherKing equipment when selected from unit parts lists. For complete listing of capacitors, check out our PROTECH Master Catalog under Electrical or visit [www.rheemparts.com](http://www.rheemparts.com) or [www.ruudpart.com](http://www.ruudpart.com).

### 2 & 3 Pole Contactors – PROTECH™

Qualified OEM replacements for Rheem, Ruud and WeatherKing equipment when selected from unit parts lists.



PART NO	DESCRIPTION	LIST
42-25102-01	2 pole; 24v; 30 amp	16.79
42-25103-01	3 pole; 24v; 40 amp	33.24
42-25103-03	3 pole; 24v; 40 amp	35.48

### Oval Run Capacitors – PROTECH™

Exact OEM fit for Rheem, Ruud, Weatherking equipment when selected from unit parts lists

- silver finish



PART NO	DESCRIPTION	LIST
43-25134-01	3 mfd/370v AC, single oval	2.09
43-25134-02	5 mfd/370v AC, single oval	2.39
43-25134-03	7.5 mfd/370v AC, single oval	2.94
43-25134-04	10 mfd/370v AC, single oval	3.30
43-25134-05	12.5 mfd/370v AC, single oval	3.61
43-25134-06	15 mfd/370v AC, single oval	4.52

### Wholesale Oval Run Capacitors

- silver finish



PART NO	DESCRIPTION	LIST
43-25139-03	35+5 mfd/370v AC, dual oval	9.12
43-25139-04	40+5 mfd/370v AC, dual oval	9.06
43-25139-08	45+5 mfd/440v AC, dual oval	12.21
43-25139-13	35+5 mfd/440v AC, dual oval	11.18
43-25139-16	40+5 mfd/440v AC, dual oval	11.79
43-25139-19	45+3 mfd/440v AC, dual oval	12.09
43-25139-21	50+5 mfd/440v AC, dual oval	13.85

### Capacitors – Turbo200

- certified to the highest certification level of UL810 standard, tested and approved for 10,000 AFC; Protected. UL file no. E133000
- can be used with hard and soft start kits
- all brass plated terminals to increase performance, reliability, prevent corrosion and improve conductivity



PART NO	DESCRIPTION	LIST
439102	Turbomini, 2.5 mfd – 12.5 mfd	19.79
439103	DSC meter, capacitor bridge	122.12

## Hard Start Kits – Kickstart®

- uses a potential relay and start capacitor
- works on all PSC & CSIR air conditioning, heat pump and refrigeration compressors
- instant recycle, senses if motor has started



PART NO	DESCRIPTION	LIST
42-T05	1-3 ton AC/HP, 1-3hp, 208/230/265 volts	67.97
42-KS1	3.5-5 ton AC/HP, 3.5-5hp, 208/230/265 volts	79.52

## Hard Start Kits – GE

- instant restart
- simple wiring instructions included on package label and capacitor label for easy installation



PART NO	DESCRIPTION	LIST
SS-5	1-3 ton AC/HP, 1-3hp, 208/240/277 volts	49.36
SS-1	3.5-5 ton AC/HP, 3.5-5hp, 208/240/277 volts	50.88

## Transformers

- primary volts: 120/208–240
- secondary volts: 24
- VA 40 configuration



PART NO	DESCRIPTION	LIST
46-25107-04	channel mount transformer	17.09

## Contactors

Competitively sourced to bring you quality contactors at the best possible price.



PART NO	DESCRIPTION	LIST
425066	1 pole; 24v AC; 30 amp	8.39
425068	2 pole; 24v AC; 30 amp	11.58
425069	2 pole; 24v AC; 40 amp	13.55
425070	3 pole; 24v AC; 40 amp	19.70

## 1 & 2 Pole Relays



PART NO	DESCRIPTION	LIST
42-25104-06	1 pole; SPDT "C"; pilot/power; 24v coil	11.00
42-25106-01	2 pole; DPDT "D"; pilot/power; 24v coil	13.85

## Sure Switch – Emerson

- increases reliability and life
- lasts up to five times longer than a contactor
- sealed to keep out ants and debris
- replaces most 30A, 1-, 1.5- and 2-pole contactors
- compressor protected from brownouts and short cycling
- microprocessor control nearly eliminates contact welding and pitting



PART NO	DESCRIPTION	CASE QTY	LIST
49P11-843	universal electronic upgrade for mechanical compressor contactors	8	152.82

## Professional HVAC Connector Kits



PART NO	DESCRIPTION	LIST
86-6966F-1PK	665 piece kit	152.76
86-6967F-1PK	1485 piece kit	279.12

## Terminal Repair Kits

- replaces damaged or corroded spade terminals
- fits all standard compressor terminals
- durable connections – Tested for over 100,000 compressor starts
- non-metallic connector



PART NO	DESCRIPTION	LIST
QT2810	QwikLug Compressor Repair Kit (10 AWG - 2 ft.)	52.55
QT2812	QwikLug Compressor Repair Kit (12 AWG - 2 ft.)	54.73
QT2910	QwikLug Compressor Repair Kit (10 AWG - 4 ft.)	65.55

## Fuse Display

- display is available with or without fuses
- display with fuses includes one pack of all 1-1/4 in. and 20 mm control fuses



PART NO	DESCRIPTION	LIST
86-ERFS	fuse display (includes fuses)	217.48
86-ERFS-E	fuse display (empty)	39.79

## Fuses

- 3A, 5A, 10A, 15A, 30A assortment

PART NO	DESCRIPTION	LIST
ZFPAS	fuse assortment, automotive blade-type, 25 pack	26.67

# INSTALLATION SERVICE NEEDS

## Flood Prevection Switches – Standex **NEW!**

The Standex Electronics® new family of flood prevention switches is designed to safeguard A/C systems from condensate overflow build-up. Multiple fittings are provided where required to accommodate various installation options. An integral magnetic reed switch is at the heart of this proven technology. UL508-compliant.

### MAIN OR AUXILIARY MOUNT

- designed for in-line installation in the vertical or horizontal position
- includes all fittings required for both mounting positions



PART NO	DESCRIPTION	LIST
FPSC5002U	FPS-L flood prevention switch	17.73

### AUXILIARY MOUNT

- designed for installation in the drain pan auxiliary outlet
- compact size allows for installation in tight spaces



PART NO	DESCRIPTION	LIST
FPSC5001U	FPS-T flood prevention switch	21.27

### PAN MOUNT

- mounts to the side of condensate drain pans
- adjustable for depth



PART NO	DESCRIPTION	LIST
FSC5002U	FPS-B flood prevention switch	10.64

## Condensate Overflow Safety Switches – Safe-T-Switch

- detects high condensate levels in drain pans and shuts-off the system
- designed to operate only as normally closed

### MAIN OR AUXILIARY MOUNT

- designed for in-line installation in the vertical or horizontal position
- includes all fittings required for both mounting positions
- includes fittings for 3/4 in. and 1 in. drains and 3/4 in. threaded female pan drain



PART NO	DESCRIPTION	LIST
84-SS1	main or auxiliary drain line mount	33.36

### AUXILIARY MOUNT

- designed for installation in the drain pan auxiliary outlet
- compact overflow switch with 3/4 in. female slip inlet and 3/4 in. threaded male adapter
- two part design for use where obstructions prevent direct threading



PART NO	DESCRIPTION	LIST
84-SS2	auxiliary drain line mount	28.73

### PAN MOUNT

- mounts to the side of condensate drain pans



PART NO	DESCRIPTION	LIST
84-SS3	pan mount	16.70

## Condensate Pumps – Sauermann

- thermal protection
- high discharge head
- high flow rate
- compact



PART NO	DESCRIPTION	LIST
SI1805SIUS11	120v, 132 gph, 1/8 gallon tank, with safety switch	75.73
SI1820SIUS11	120v, 132 gph, 1/2 gallon tank, with safety switch	81.79

### MINI CONDENSATE PUMPS

- specially designed for air conditioning units with limited internal space
- simple and easy slide assembly
- no fine mesh filter
- reversible pump mounting



PART NO	DESCRIPTION	LIST
SI3000SIUS11	2.8 tons, 20ft lift, 120v, 60Hz, with safety switch	189.21
SI3000SIUS23	2.8 tons, 20ft lift, 230v, 50/60Hz, with safety switch	189.21
SI3200SIUS11	5.6 tons, 20ft lift, 120v, 60Hz <b>CLOSEOUT</b>	208.15
SI3200SIUS23	5.6 tons, 20ft lift, 230v, 60Hz <b>CLOSEOUT</b>	208.15

**CLOSEOUTS – WHILE SUPPLIES LAST**

## Condensate Pumps – Little Giant

- high impact ABS
- steel motor shaft



PART NO	DESCRIPTION	LIST
84-VCMA-15UL	without safety switch	83.18
84-VCMA-15ULS	with safety switch	88.70
84-VCMA-15ULST	with safety switch and tubing	95.79

## Condensate Overflow Safety Switches – EZ Trap

- designed for installation in the drain pan auxiliary outlet
- detects high condensate levels in drain pans and shuts-off the system
- the switch can be wired to operate as normally open or normally closed; three lead wires



PART NO	DESCRIPTION	LIST
EZT-224	auxiliary drain line mount	23.97
EZT-226	auxiliary drain line mount	23.97

## Water Sensors – Aquaguard

- protective housing keeps out insulation and debris
- easy, no-drill installation



PART NO	DESCRIPTION	LIST
AG-1100+	water sensor for metal pans, trigger depth 3/4"	20.15
AG-3150E	compact water sensor, trigger depth 1/8"	39.36



## Filter Driers – PROTECH™

### ONE-WAY LIQUID LINE

PART NO	DESCRIPTION	LIST
83-25151-16	083S, sweat uni-directional	24.21
83-25151-23	163S, sweat uni-directional	24.52
83-25151-24	164S, sweat uni-directional	25.33



### BI-FLOW LIQUID LINE

PART NO	DESCRIPTION	LIST
83-25152-03	083S, sweat bi-directional	40.79
83-25152-05	163S, sweat bi-directional	44.97



## Suction Line Filter Driers – PROTECH™

- full copper fittings – easy to sweat
- low pressure drop – full flow fittings
- dual access valves
- corrosion resistant finish
- rugged steel shells for shock resistance

PART NO	DESCRIPTION	LIST
83-25153-07	standard shell, uni-directional, 166S	44.09
83-25153-08	standard shell, uni-directional, 167S	46.73
83-25153-10	standard shell, uni-directional, 306S	68.42



## Filter Driers – Sporlan

Uses 80% 3A molecular sieve core and 20% active aluminum inside; it is a perfect core mixture for the equipment system which has strong drying requirement and works under lowest frozen temperature. It has the best result to apply to refrigeration of CFC and HCFC (R22, R502) using with the petrol and ALKY-phenyl oil.

PART NO	DESCRIPTION	LIST
83-25208-03	uni-directional, 9 CU in 3/8 S	32.55
83-25208-04	uni-directional, 16 CU in 3/8 S	41.79



## Tubing Insulation – Aerocel

- 6 ft. length
- Aerocel AC series

PART NO	DESCRIPTION	CASE QTY	LIST
AC11812	1-1/8" ID x 1/2" wall thickness	36	9.61
AC11838	1-1/8" ID x 3/8" wall thickness	48	5.21
AC1238	1/2" ID x 3/8" wall thickness	108	3.30
AC3412	3/4" ID x 1/2" wall thickness	56	6.06
AC3438	3/4" ID x 3/8" wall thickness	70	4.06
AC3838	3/8" ID x 3/8" wall thickness	120	3.30
AC5812	5/8" ID x 1/2" wall thickness	63	5.73
AC5838	5/8" ID x 3/8" wall thickness	88	3.88
AC7812	7/8" ID x 1/2" wall thickness	48	6.55
AC7838	7/8" ID x 7/8" wall thickness	63	4.30



## EZ Trap Condensate Traps – Airtec

### BASIC

Includes: blow molded trap, cross, tee, and three red caps.

PART NO	DESCRIPTION	LIST
EZT-113	cross trap kit - 3/4" economy	12.12
EZT-113B	cross trap kit - 3/4" economy w/brush	16.94



### ADVANCED

Includes: standard trap, cross, red cap, bushings, tee, male adapter, black stubs, leads and cleaning brush

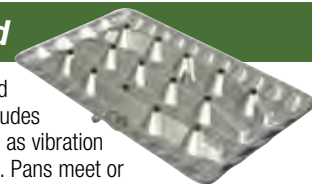
PART NO	DESCRIPTION	LIST
EZT-205	deep cross trap kit - 3/4" w/float switch	58.94
EZT-207	cross trap kit - 3/4" switched side entry	55.70
EZT-210	cross trap kit - 3/4" standard w/float switch	52.52
EZT-219	cross trap kit - 1" w/float switch	73.27



## Drain Pans – Aquaguard

The Goliath is the strongest, most rugged HVAC secondary pan on the market. Includes the AG-4200 float switch system as well as vibration isolators that can quiet noisy HVAC units. Pans meet or exceed all international product building codes and are UL approved.

PART NO	DESCRIPTION	CASE QTY	LIST
AG-G28X69	28" x 69", horizontal installation	10	197.36
AG-GF30X36	30" x 36", vertical installation	10	106.48
AG-G30X50	30" x 50", horizontal installation	10	161.48
AG-G30X62	30" x 62", horizontal installation	10	182.97
AG-GF34X79	34" x 79", horizontal installation	10	275.73



## Clear Vinyl Tubing

PART NO	DESCRIPTION	LIST
686013	3/8" outside diam, 100' roll	22.27
686014	1/2" inside diam, 100' roll	33.48
686015	5/8" inside diam, 100' roll	45.42



## Liquid-Tight Conduit

PART NO	DESCRIPTION	LIST
8431	flexible non-metallic conduit (1/2 in. x 100 ft.)	97.39
8432	flexible non-metallic conduit (3/4 in. x 100 ft.)	119.64
PD455009	flexible non-metallic conduit (1 in. x 100 ft.)	199.73



# INSTALLATION SERVICE NEEDS

## Liquid Tight Conduit Fittings

### STRAIGHT

PART NO	DESCRIPTION	CASE QTY	LIST
455005	Liquid-Tight Conduit Fitting - 1/2"	25	1.79
PD455007	Liquid-Tight Conduit Fitting - 3/4"	10	3.73



### 90 DEGREE

PART NO	DESCRIPTION	CASE QTY	LIST
PD455006	Liquid-Tight Conduit Fitting - 1/2"	10	3.03
PD455008	Liquid-Tight Conduit Fitting - 3/4"	50	6.21



## Panel Thermometers **CLOSEOUT**

- temperature range -20 to 300°F
- 2" dial diameter and 48" capillary
- accurate to within 2 degrees
- NSF certified, 1-year limited warranty
- designed for OEM replacement in refrigerator and



PART NO	DESCRIPTION	LIST
6142-20-3	2" front flange back connect flush mount	46.06

**WHILE SUPPLIES LAST**

## Linesets – Cerro

- tested in accordance with ASTM E243 and provided with no detectable defect
- quick, efficient and economical field installation



PART NO	DESCRIPTION	CASE QTY	LIST
612825	3/8" / 3/4" x 25 ft.	13	211.64
612835	3/8" / 3/4" x 35 ft.	11	283.45
612850	3/8" / 3/4" x 50 ft.	7	377.91
614825	3/8" / 7/8" x 25 ft.	11	274.48
614835	3/8" / 7/8" x 35 ft.	8	367.58
614850	3/8" / 7/8" x 50 ft.	6	490.09

## Compressor Repair Kit – Zebra

Terminals high-temp soldered to 10 gauge fine-strand, color-coded wires for the best connection. Allows clearance for compressor posts, and lay flat under the safety cover. Twist-on wire-nuts also provided.



PART NO	DESCRIPTION	LIST
ZCTRK	10 AWG 1/4" flag terminals & twist-on wire connectors	26.67

## Duct Saddle **CLOSEOUT**

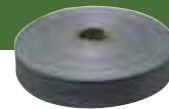
- holds flexible ducts straight
- allows ducts to carry full volume of air
- reduces where condensation collects
- eliminates kinking, sagging and the use of an elbow at the pre-insulated box



PART NO	DESCRIPTION	LIST
DS712	Duct Saddle, accommodates 7-12" duct	12.97
DS1420	Duct Saddle, accommodates 14-20" duct	16.24
DS712V	Duct Saddle, accommodates 7-12" duct	13.18

**WHILE SUPPLIES LAST**

## Duct Strap



PART NO	DESCRIPTION	CASE QTY	LIST
640010	polypropylene - 1-3/4" x 100 yd, black	24	11.30
86-25172-03	polymeric - 3/4" x 100'	20	19.39

## Smart Flow Elbow

- eliminates kinks in flexible ducts
- improves airflow - saves energy
- one size fits all flex ducts 4"-16"
- install on new or retrofit
- UL classified and made in USA
- 100% recycled materials



PART NO	DESCRIPTION	CASE QTY	LIST
630500	Flex-Right Smart Flow elbow	25	14.76

## HVAC Whips

### NON-METALLIC (PVC) FITTINGS



ART NO	DESCRIPTION	CASE QTY	LIST
849040	1/2" x 6' #10 THHN wire	12	26.21
849041	3/4" x 4' #8 THHN wire	12	29.09
849042	3/4" x 6' #8 THHN wire, #10 ground	12	34.39

## Thermostat Cable – Genesis

- polypropylene insulation provides exceptional dielectric and strips easily and cleanly, saving time
- ripcord for quick jacket removal
- packaging options: Spools or Speedbags™
- room and zone markings printed on jacket
- manufactured in ISO 9001:2000 facility to exacting quality standards



PART NO	DESCRIPTION	CASE QTY	LIST
47160307	18/8 solid - 250 ft. spool	4	183.06
47160907	18/8 solid - 250 ft. speedbag	—	178.76
47130307	18/5 solid - 250 ft. spool	4	123.21
47104807	18/2 solid - 500 ft. spool	4	116.91

**We do our best to uphold commodity prices. But, due to the market volatility of copper, prices on these items are subject to change without notice. Please refer to the Parts website for the most current prices. [www.rheemparts.com](http://www.rheemparts.com) or [www.ruudparts.com](http://www.ruudparts.com)**

## Thermostat Cable

PART NO	DESCRIPTION	CASE QTY	LIST
32140312	jacketed, plenum rated, 4 x 250', 18/2	4	100.64
32145012	jacketed, plenum rated, 1 x 500', 18/2	—	202.18
32760312	OAS CL2P (plenum), 4 x 250 ft., 18/5	4	209.12
32765012	OAS CL2P (plenum), 1 x 500 ft., 18/5	3	415.94

## FilterLOCK

- "one size fits all" covers standard furnace filter slot openings
- two-piece overlapping design
- made from rugged high density polyethylene
- integral magnetic strips adhere to plenum



PART NO	DESCRIPTION	CASE QTY	LIST
540031	FilterLOCK	50	14.42

## Disconnects – PROTECH™

### METAL: TOP OPENING

- steel enclosure material



PART NO	DESCRIPTION	CASE QTY	LIST
84-25175-04	30 amp, 230v, fused	10	21.12
84-25175-05	60 amp, 230v, nonfused	10	18.52

## Condenser Pads

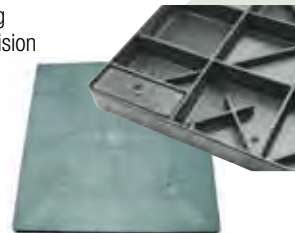
- true concrete pad at the weight of plastic 2.5 lbs/sq. ft.)
- unaffected by soil and weather conditions



PART NO	DESCRIPTION	CASE QTY	LIST
UC2436-2	24" x 36" x 2"	20	63.61
UC2436-3	24" x 36" x 3"	15	69.67
UC3030-2	30" x 30" x 2"	20	66.64
UC3030-3	30" x 30" x 3"	15	66.64
UC3445-3	34" x 45" x 3"	5	109.06
UC3636-3	36" x 36" x 3"	15	90.88

## Equipment Pads – DURAGRID® Old Castle

- corner feet for great stability and leveling
- the result of more than 40 years of precision engineering and manufacturing
- lightweight - 80% lighter than pre-cast concrete
- UV stable, resistant to sunlight and extreme hot and cold temperatures
- made in the USA



PART NO	DESCRIPTION	CASE QTY	LIST
92110001	gray, 18" x 36" x 2"	50	42.24
92110002	gray, 24" x 24" x 2"	50	36.30
92110007	gray, 30" x 30" x 2"	25	48.30
92110008	gray, 30" x 36" x 2"	25	61.24
92110010	gray, 30" x 42" x 2"	25	68.03
92110011	gray, 33" x 33" x 2"	25	57.76
92110012	gray, 33" x 38" x 2"	25	69.85
92110013	gray, 33" x 45" x 2"	25	78.70
92110015	gray, 36" x 36" x 2"	25	70.42
92110016	gray, 36" x 42" x 2"	25	86.09
92110017	gray, 36" x 48" x 2"	25	92.06
93110001	gray, 24" x 24" x 3"	32	57.27
93110002	gray, 24" x 36" x 3"	32	64.39
93110006	gray, 30" x 30" x 3"	16	61.88
93110010	gray, 33" x 33" x 3"	16	72.06
93110012	gray, 33" x 45" x 3"	16	100.27
93110014	gray, 36" x 36" x 3"	16	83.42
93110016	gray, 36" x 48" x 3"	16	113.45

## Equipment Pads – ECO PAD® Old Castle

- qualifies toward LEED project point requireme
- only pad with corner feet for great stability and leveling
- molded with quality recycled materials
- accepts bolts and screws
- chemical resistant, UV stable
- made in the USA



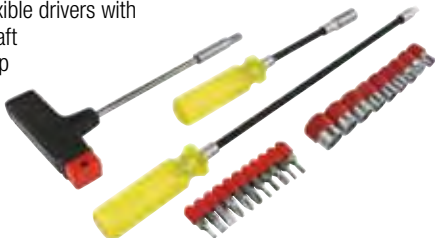
PART NO	DESCRIPTION	CASE QTY	LIST
92120002	black, 24" x 24" x 2"	50	31.45
92120003	black, 24" x 36" x 2"	50	40.88
92120007	black, 30" x 30" x 2"	25	40.70
92120009	black, 30" x 40" x 2"	25	49.24
92120011	black, 33" x 33" x 2"	25	46.70
92120015	black, 36" x 36" x 2"	25	53.55
93120006	black, 30" x 30" x 3"	16	51.88
93120010	black, 33" x 33" x 3"	16	54.73
93120016	black, 36" x 36" x 3"	16	84.67
93120021	black, 24" x 24" x 3"	32	37.55
93120022	black, 24" x 36" x 3"	32	50.21



# TOOLS & SUPPLIES

## Flexible Shaft Nut Driver Kit – Sensible Products

- 2-1/2" and 8 1/2" flexible drivers with heavy-duty flexible shaft
- T-handle for better grip
- 9 - 6 point sockets
- 5 slotted bits
- 3 phillips bits
- 3 torx bits



PART NO	DESCRIPTION	LIST
FSND-1	flexible shaft nut driver kit (23 pieces)	74.97

## Bit Driver/Slide Driver – Sensible Products

- thumb nut safety lock keeps it firmly in place
- slide from 1/4" to 5/16" and back again without stopping to change sockets
- special magnet holds screw securely at both sizes
- 3" handle makes a slide driver that fits in your pocket
- made of hardened steel



PART NO	DESCRIPTION	LIST
SDBD-1	slide driver/bit driver	58.91

## Bit Driver/Slide Driver – Sensible Products

- magnet and socket move in unison so magnet has 100% power at both sizes
- special magnet holds screw securely
- slide from 1/4" to 5/16" and back again without stopping to change sockets
- made of hardened steel



PART NO	DESCRIPTION	LIST
SD-10	10" slide driver	63.00
SD-7	7" slide driver	63.61
SD-3	3" slide driver	62.48

## Nut Driver Set – Klein Tools

Includes sizes (in.) 3/16, 1/4, 5/16, 11/32, 3/8, 7/16, 1/2



PART NO	DESCRIPTION	LIST
87-631S	7 piece, cushion-grip, 3" shank	119.76

## Hex-Key Set - Klein Tools

Includes sizes (in.) .050, 1/16, 5/64, 3/32, 7/64, 1/8, 9/64, 5/32



PART NO	DESCRIPTION	LIST
87-70581	hex-key set - folding	13.61

## Refrigeration Wrench - Klein Tools

- reversible
- square socket sizes (in.) 3/16, 1/4, 5/6, 3/8



PART NO	DESCRIPTION	LIST
87-68310	refrigeration service wrench - ratcheting	37.27

## Refrigeration Service Wrench - CPS

Reversible.



PART NO	DESCRIPTION	LIST
87-TLSWO	offset wrench - 3/16, 1/4, 5/16, 3/8	24.70
87-TLSWS	service wrench - 3/16, 1/4, 5/16, 3/8	23.79
87-TLSWL	service wrench - hex 1/2, 9/16 - sq 3/16, 1/4	31.03

**CLOSEOUT – WHILE SUPPLIES LAST**

## Tubing Pliers – CPS

- 18rounded jaw to prevent cutting tubing
- 18tool locks onto tubing to prevent loss of refrigerant during service
- 181-year limited warranty



PART NO	DESCRIPTION	LIST
87-TLPO	locking pinch-off pliers	21.82

## Tube Cutters – CPS



PART NO	DESCRIPTION	LIST
87-TC174	tube cutter - medium 3/8 – 1-1/8	34.03
87-TC274	tube cutter - premium 1/8 – 1-1/8	37.42

## Pipe Cutter – Uniweld

For use on the following materials:  
PVC, PEX, and all other plastic pipe.



PART NO	DESCRIPTION	LIST
87-70078	pipe cutter - PVC - ratchet style	36.33

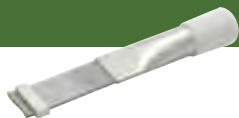
## Aviation Snips – Midwest

- formed from a hot drop-forging process and not hot-stamped or cast
- blades are stronger, durable, and outlast others in cutting
- made in usa



PART NO	DESCRIPTION	LIST
87-P6510R	aviation snips, offset right	37.73
87-P6510L	aviation snips, offset left	37.73
87-P6510S	aviation snips, offset - straight	36.91

## Fin Tool – CPS



PART NO	DESCRIPTION	LIST
87-TLFC1	fin tool	12.39

## Fin Tool – Mill Rose Co.



PART NO	DESCRIPTION	LIST
73621-Z	fin comb scraping tool	7.94

## Fin & Coil Whisk – Mill Rose Co.



PART NO	DESCRIPTION	LIST
73610-Z	fin & coil whisk	4.48

## Flaring Tool – Mastercool

Flaring OD: 3/16, 1/4, 5/16, 7/16, 1/2, 5/8.



PART NO	DESCRIPTION	LIST
70051	flaring tool - 45 degree	47.73

## AC Security Cage – AC Guard

- protects AC from theft
- 16 gauge steel
- easy installation
- removable for maintenance
- adjusts from 34h x 39w x 30d to 57h x 51w x 51d



**CONTRACTORS ONLY!**  
**\$200 REBATE**  
FOR EVERY 10 UNITS  
PURCHASED

GO TO [WWW.AC-GUARD.COM](http://WWW.AC-GUARD.COM)  
TO CLAIM YOUR REBATE.  
Promo ends April 30, 2014

PART NO	DESCRIPTION	LIST
ACGUKIT	air conditioner security cage	572.73

## Ratchet Tube Bender Kit – Mastercool

- bends: 3/8, 1/2, 5/8, 3/4, 7/8 soft tubing
- custom-molded case
- includes heavy-duty cutter for 1/8 and 1-1/8 OD tubing
- hand-operated design bends tubes easily



PART NO	DESCRIPTION	LIST
70070	ratchet tube bender	319.00

## Flaring & Swaging Tool Set

- flaring OD: 1/8, 3/16, 1/4, 5/16, 3/8, 7/16, 1/2, 5/8, 3/4
- swaging OD: 3/16, 1/4, 5/16, 3/8, 1/2, 5/8, 3/4



PART NO	DESCRIPTION	LIST
70053	flaring tool - 45 degree	159.15

## Fan Puller – Sensible Products

- removes fan blades/blower wheels that are frozen to a motor shaft
- can apply pushing or pulling force
- pulling hooks and set screws provided
- accommodates 5/8" belt drive and 1/2" or less direct drive motor shafts



PART NO	DESCRIPTION	LIST
UP-1	fan blade and blower wheel puller	119.61

## Solenoid Test Magnet - Sporlan

- manually opens solenoid valves for troubleshooting, service repairs and maintenance
- magnetically lifts plunger
- for direct connected and pilot operated solenoid valves; 2-way solenoids, 3-way reclaim valves
- For use with all manufacturers



PART NO	DESCRIPTION	LIST
PD610016	solenoid test magnet	73.77

## A/C Drain Sucker – Nu-Calgon **NEW!**

A/C Drain Sucker clears clogged A/C drain pans easily from outside. Provides suction or pressure to clogs and removes water from overflowing pans. Kit includes: drain sucker pump and hoses, all fittings for suction, shock tabs, pan strip treatment



PART NO	DESCRIPTION	LIST
87-CADS1	A/C drain sucker	61.36

# TOOLS & SUPPLIES

## ECM Motor Tester – Zebra

The best tool to diagnose what's going on in an ECM System is an in-line diagnostic tool. The Variable Speed Zebra is exactly that: a tool that connects between the air handler's circuit boards and the motor.

- operates in-line with the system, in real time, testing both major sections (motor and control boards) simultaneously
- monitors the signals going out of the circuit boards, displays them for you and then either (a) passes them along to the motor, or (b) allows you to interrupt the signals and control all the functions of the motor directly
- displays the motor's CFM airflow, the motor's RPM, and the control voltages being sent to the motor's electronics module
- two DVD's are included to teach ECM Theory and ECM Troubleshooting; a printed manual is also included



PART NO	DESCRIPTION	LIST
VZ-7	variable speed Zebra ECM motor tester	795.00
VZH03	X-13 motor adapter (for VZ-7 tester)	152.21
VZH04	Coleman/York motor adapter (for VZ-7 tester)	53.91
VZH06	ECM condenser fan motor adapter (for VZ-7 tester)	141.70

## ECM Accessories – Zebra

### MOTOR POWER CHECKERS

Simple to use - just plug it into the 5-pin power harness going to a GE (Regal-Beloit) ECM motor and the LEDs will indicate status. Full instructions included. Tests and Indicates: input power level, power filter/choke, wiring configuration



PART NO	DESCRIPTION	LIST
VPTST	ECM Motor Checkers	62.45

### MOTOR SURGE PROTECTORS

Transient, surge, lightning, and spike protection for ECM motors. Simply plug VZPRO directly into motor, then plug motor's harness into the VZPRO (full instructions with photos in package). The most common cause of ECM Motor failure is damage to the electronics module as a result of poorly conditioned voltage. This unit works with either 120v or 240v GE ECM motors.



PART NO	DESCRIPTION	LIST
VZPRO	ECM Motor Surge Protector	64.52

### MOTOR REPAIR KIT

Don't toss that ECM motor! Repairs many GE (Regal-Beloit) ECM motor modules that have been damaged by voltage problems and power surges. Full-color insert with detailed instructions inside.



PART NO	DESCRIPTION	LIST
VZREP	ECM Motor Repair Kit	48.48

## Refrigerant Charging Scale – Mastercool

- wireless unit prevents unwanted tangles in wires
- extremely accurate weight sensor
- battery life symbol for platform and remote constantly displayed on LCD
- wireless signal strength indicator conveniently displays on remote
- magnet on remote allows easy placement on fixtures
- easily store the remote in the body of the platform
- keypad provides synchronization and zeroing



PART NO	DESCRIPTION	LIST
98310	wireless charging scale	481.27
98315	wireless charging scale with solenoid	705.88

## Refrigerant Charging Scale – CPS

- high capacity 200lb/100kg
- computer-a-charge scale
- calibrated to strict NIST standards
- large, visible LCD readout displays
- includes automatic off feature



PART NO	DESCRIPTION	LIST
87-CC220	charging/recovery scale	468.24

## Leak Detector Kit – Mastercool

- detects all CFC, HCFC and HFC refrigerants
- LED visual indicator
- 16 inch long cable probe
- minimum leak rate detection capability: 1/10 oz./year
- includes a custom molded carrying case



PART NO	DESCRIPTION	LIST
55200	electronic/UV leak detector kit, 6 sensitivity ranges	445.64
55100	electronic leak detector kit, 3 sensitivity ranges	320.85

## Refrigerant Recovery – Mastercool

The complete solution to your recovery needs.

- safety high pressure switch
- simple internal structure for field service
- largest volume recovery rate in market
- injection molded high density polyethylene case for maximum durability
- front cover has bumper guards built in to reduce damage to the control knob
- for use with all refrigerants including R410A
- revolutionary double piston oil-less compressor



PART NO	DESCRIPTION	LIST
69300	twin turbo refrigerant recovery machine	1600.73



## Rotary Vane Vacuum Pumps – Mastercool

- gas ballast valve helps prevent oil contamination
- 3 inlet ports: 1/4" FL, 3/8" FL and 1/2" ACME
- high efficiency 2-stage pump
- 25 microns
- manifold valve isolates pump from the system when testing for leaks
- easy access oil fill port



PART NO	DESCRIPTION	LIST
90065	1/3 hp, 1725 rpm, 110v, 60Hz, 5 cfm	672.09
90066-2V-110	1/3 hp, 1725 rpm, 110v, 60Hz, 6 cfm	669.97
90067	1/2 hp, 1725 rpm, 110v, 60Hz, 7.5 cfm	827.73

## Refrigerant Recovery Cylinder– Mastercool

- Powder coated cylinder for high gloss, durable finish
- Y-valve for liquid/vapor
- 3/4" NPT opening accepts 80% fill float switch shut-off device
- 1/4" opening for air purge valve
- Reusable and conforms to DOT-4BA400 specifications and ARI guidelines
- Pre-charged cylinder provides a clean, dry interior
- Storage and transport of recovered refrigerant gases
- Valve & Float Switch UL Listed
- AUS Approved and TC Canadian Approved



PART NO	DESCRIPTION	LIST
62010	refrigerant recovery cylinder - 400 psi (30 lbs)	175.70

## Manifolds

### MASTERCOOL MANIFOLD SET

- aluminum 3-way ball valve manifold
- one 3/8" SAE vacuum hose
- 90° swivel vacuum ball valve
- large 3 1/8" gauges
- three 60" hoses
- 3 1/4 SAE hoses and manual ball valves



PART NO	DESCRIPTION	LIST
59861	R410A, R22, R404A gauge	337.70

### CPS MANIFOLD

- aluminum 2-way manifold
- advanced VVS diaphragm valve
- 45° fittings for easy hose storage
- anodized aircraft aluminum block body
- precision flutter-free metal-cased gauges



PART NO	DESCRIPTION	LIST
87-MV2D2	R410A, R22, R134A gauge	146.39

## Sight Glass – Sporlan

- sweat connections
- easy viewing, fused glass
- reversible indicator colors



PART NO	DESCRIPTION	LIST
83-25211-02	3/8" fitting connection	33.30

## Compact Calculator – Mastercool

Programmed with 37 refrigerants and is upgradable as additional refrigerants become available. Accurate subcool and superheat readings in three easy steps.



PART NO	DESCRIPTION	LIST
52246	compact subcool/superheat calculator	234.00

## Infrared Thermometer w/Laser – Mastercool

- enhanced backlit LCD display
- includes 1 dial size thermometer
- 2 AAA batteries, carrying case included
- expanded temperature range of 58°–932°F



PART NO	DESCRIPTION	LIST
5224A	infrared thermometer	106.79

## Temp-Seeker Thermometer – CPS

Provides instant temperature measurement over a wide range of applications. The unit offers simple one-handed operation, laser point sighting, a backlit display, °C/°F selectability and an automatic power off feature. Carrying case and 9V alkaline battery included.



PART NO	DESCRIPTION	LIST
87-TMINI12	infrared thermometer	187.27

## Digital Thermometer

- temperature range -58 to 500°F
- user selectable temperature alarm
- countdown timer
- min/max memory
- 3-3/4 inch stainless steel probe with 4 foot cord



PART NO	DESCRIPTION	LIST
87-TM50	digital thermometer (temp-seeker)	48.18

## Digital Pocket Thermometers – Mastercool

- Temperature range -58 to 302°F
- 5 inch stainless steel probe
- Includes protective sleeve with pocket clip



PART NO	DESCRIPTION	LIST
52223-A	pocket thermometer - digital	37.52

## Pocket Thermometers **CLOSEOUT**

- temperature range -40 to 180°F
- made with anti-microbial plastic
- includes a red protective sheath with built-in temperature adjustment wrench
- NSF certified, lifetime warranty



PART NO	DESCRIPTION	LIST
1246-02-1	1" dial, 5" stem	7.94

WHILE SUPPLIES LAST

# TOOLS & SUPPLIES

## Incandescent Work Lights



PART NO	DESCRIPTION	LIST
86-05857-00	trouble light, 25 ft.	52.03
86-05858-00	trouble light, 50 ft.	75.88

## PRO-Glo Work Light – Century Wire & Cable

- 1613 JTW
- 25' cord



PART NO	DESCRIPTION	LIST
D12812025	neon work light - orange	63.79

## Tape

UL listed/classified

PART NO	DESCRIPTION	CASE QTY	LIST
777ID	3/4" x 60' PVC electrical tape	10	2.45

## Flashlight – Sensible Products

- magnet on grip and light for convenience and ease of use
- batteries included



PART NO	DESCRIPTION	LIST
EMF-1	extendable magnetic flashlight	35.70
EMF-2	extendable magnetic flashlight, includes mirror/clip	46.97

## CoilJet – SpeedClean **CLOSEOUT**

The CoilJet delivers a powerful spray to wash even the dirtiest coils without damaging sensitive fins.

- rechargeable battery powered
- 100 PSI spray



PART NO	DESCRIPTION	LIST
CJ-95	portable coil washing system	1267.52
8945	spray wand use with CJ-95, 36 in., 90°	152.15

**WHILE SUPPLIES LAST**

## BucketVac – SpeedClean

The BucketVac makes it simple. No more goopy messes or stopping, dumping and cleaning.

- turns a standard 5 gallon bucket into a portable wet/dry vacuum
- includes 5 gallon bucket, 2' flexible hose, crevice tool, bulk pick-up tool, floor tool, brush tool, 2-12" extension wands, 3 standard filters



PART NO	DESCRIPTION	LIST
BV-5	includes head, bucket, accessories	237.97

## Staples

PART NO	DESCRIPTION	LIST
694-12	staples, 1/2" (5000/box)	21.82
694-14	staples, 9/16" (5000/box)	21.82

## Gloves – Black Mamba

- patented Nitrex® polymer for superior strength and tear resistance
- fully textured with grip-rite finish
- two-ply fusion strength
- three times the chemical resistance of latex or vinyl
- powder-free



PART NO	DESCRIPTION	LIST
849169	box of 100, M	21.82
849166	box of 100, L	22.42
849167	box of 100, XL	22.42

## Gloves – Youngstown

- non-slip saddle reinforcement protects critical wear area
- non-slip reinforcement increases grip and durability
- supportive cuff with adjustable velcro closure
- terry cloth thumb for wiping sweat and debris
- double-stitched bonded nylon thread for extended life
- available in sizes small–3XL



PART NO	DESCRIPTION	LIST
03-3060-80-L	glove general utility plus, large	42.19
03-3060-80-XL	glove general utility plus, x-large	42.19
03-3110-80-L	glove carpenter plus, large	42.19
03-3110-80-XL	glove carpenter plus, x-large	42.19
03-3200-78-L	glove anti-vibe XT, large	46.79
03-3200-78-XL	glove anti-vibe XT, x-large	46.79

## Shoecovers & Coveralls - Shubee



PART NO	DESCRIPTION	CASE QTY	LIST
849101	shoecovers, dark blue, bag of 10 pairs	15	12.09
849122	coveralls, dark blue, XL	25	14.42

## Scrubs in a Bucket

- disposable pumice hand cleaner
- impregnated towel
- also available in 30 counts per bucket



PART NO	DESCRIPTION	CASE QTY	LIST
4366-87	80 ct per bucket	6	50.88

## Safety Glasses – Edge Eyewear

### EDGE EYEWEAR SAFETY GLASSES

#### Work Safe! Play Safe!

Edge Eyewear produces designer quality safety rated eyewear. All Edge Eyewear glasses are compliant with ANSI Z87.1 + 2010 and military ballistic MCEPS GL-PD 10-12.

- High Mass Impact - spectacle frames and lenses capable of resisting a 17.6 oz spike that is dropped from a height of 50 in.
- Penetration Test - lenses capable of resisting penetration by a weighted needle with a total weight of 1.56 oz dropped from a height of 50 in.
- High Velocity Impact - spectacle frames and lenses capable of resisting impact from a .25 in. diameter steel ball traveling at a velocity of 150ft/s.



**PROTECH™**  
Quality HVAC and Plumbing Parts and Supplies

- patented highly flexible nylon frame
- polycarbonate scratch resistant lens
- blocks 99.9% of UVA/UVB/UVC rays



### KIROVA

PART NO	DESCRIPTION	LIST
AB111AR	anti-reflective	9.24

### ZORGE

PART NO	DESCRIPTION	LIST
DZ111	clear	10.45
DZ111-2.0	magnifier 2.0	18.33
DZ112	yellow	10.45
DZ116	smoke	10.45

### KHOR

PART NO	DESCRIPTION	LIST
TSDK215	polarized copper	57.42

### KAZBEK

PART NO	DESCRIPTION	LIST
TSKAP218	polarized blue	57.42
TSKXL-111	XL black clear	21.52

### DAKURA

PART NO	DESCRIPTION	LIST
TSM21-G15-7	polarized silver	57.42
TSM216	black smoke polarized	57.42

### RECLUS

PART NO	DESCRIPTION	LIST
TSRAP	polarized black/aqua percision blue	57.42

### BRAZEAU

PART NO	DESCRIPTION	LIST
TXB216-S	designer-black/skull polarized smoke	60.45

### COUNTER DISPLAY

Safety glasses not included. Recommended for more styles, visit the Parts website.



Purchase \$300 any combination of Edge Eyewear to receive FREE display. To receive free Display, please email your purchase order to [promoparts@rheem.com](mailto:promoparts@rheem.com).

PART NO	DESCRIPTION	LIST
9915	12 unit display	207.06
9906	10 unit display	207.06

## Cleaners – PROTECH™

Cleans out stubborn deposits from coils.



PART NO	DESCRIPTION	CASE QTY	LIST
85-1101	non-acid condenser coil cleaner 1 gallon, yellow	4	21.82
85-EC01	non-acid envirosafe condenser coil cleaner 1 gallon, foaming	4	19.85
85-C01	non-acid condenser coil cleaner 18 oz aerosol, foaming	12	10.58

## Cleaners – Nu-Calgon



PART NO	DESCRIPTION	CASE QTY	LIST
4081-75	Cal-Spray calclean, 20 oz, aerosol	6	19.94
4171-75	Cal-Spray evap foam no rinse, 18 oz aerosol, cooling coil cleaner	6	18.67
4290-75	Cal-Spray nu-blast, 18 oz aerosol condenser coil cleaner	6	26.82
4296-50	Cal-Spray pan spray leak sealer, 16 oz aerosol	6	37.82
4083-75	Cal-Spray degreasing solvent ef, 20 oz aerosol	6	22.55



PART NO	DESCRIPTION	CASE QTY	LIST
4291-08	nu-brite, non-acid condenser coil cleaner 1 gallon, foaming	4	40.39
4120-08	alka-brite plus condenser coil cleaner 1 gallon, foaming	4	41.91
4133-08	Cal-brite coil cleaner & brightener 1 gallon, biodegradable	4	53.24
4168-08	Evap Pow'r C evaporator coil cleaner 1 gallon, green	4	36.94

## A/C Shine – Nu-Calgon **NEW!**

- spray on, wipe off
- cleans and protects in minutes
- restores original shine
- UV protection



PART NO	DESCRIPTION	LIST
61118	outdoor A/C unit cleaner/protectant, aerosol-16 oz	20.91

## Clean Green – Nu-Calgon

- pleasant smell
- penetrates grease and oil
- all purpose cleaner



PART NO	DESCRIPTION	CASE QTY	LIST
4186-24	1 quart	12	23.18

## Sealants & Adhesives

### PROTECH™



PART NO	DESCRIPTION	CASE QTY	LIST
86-370A	HVAC/R silicon sealant - aluminum	12	8.09
86-370C	HVAC/R silicon sealant - clear	12	8.09
86-370W	HVAC/R silicon sealant - white	12	7.70

### NU-CALGON

Ready to use expanding, polyurethane, prepolymer foam. Tack-free in 30 minutes and dries in 4 hours.

- fire retardant
- no CFCs or HCFCs
- seals and insulates



PART NO	DESCRIPTION	CASE QTY	LIST
4293-04	Nu-Foam expanding sealant, 9 oz	12	16.30

### BOSS

- meets CA-25-4
- UL classified
- complies with EPA method 24 and California Air Resource Board method 310



PART NO	DESCRIPTION	CASE QTY	LIST
86-333	expanding foam sealant - 12 oz	12	9.94
86-33324	expanding foam sealant - 24 oz	12	14.64

## Mean Green Adhesive – Vapco

- DOT 39 NCR compliant
- instant tack
- non-flammable



PART NO	DESCRIPTION	LIST
MG-LC	non-flammable, 40 lb cylinder	543.00

**PROTECH™**  
Quality HVAC and Plumbing Parts and Supplies



## Mastic – PROTECH™



PART NO	DESCRIPTION	CASE QTY	LIST
670020	all purpose fibered mastic, off-white	4	29.67
670021	smooth mastic, gray	4	31.24

## Sprayers – PROTECH™

- heavy-duty poly construction
- built-in pressure relief valve
- adjustable poly nozzle



PART NO	DESCRIPTION	LIST
85-S2608-1G	poly sprayer - 1 gallon	81.94
85-S2609-2G	poly sprayer - 2 gallon	87.39

## Leak Freeze – Universal Technologies

### STOPS LEAKS PERMANENTLY

- 1.5 oz. cartridge
- does not contain polymers
- permanently seals leaks in air conditioning and refrigeration systems
- will continue to seal additional leaks for up to 1 year that meet testing specifications
- not activated by moisture or oxygen
- made in the USA



PART NO	DESCRIPTION	LIST
00280	A/C Leak Freeze	73.79
00282	A/C Leak Freeze w/Magic Frost	94.52
00284	A/C Leak Freeze – clamshell w/adaptor	93.42
00286	A/C Leak Freeze w/Magic Frost – clamshell w/adaptor	113.79
00290	5/16 in. adaptor for A/C Leak Freeze	19.70
00292	1/4 in. adaptor for A/C Leak Freeze	19.70

## Vacuum Pump Oil – PROTECH™

- highly demulsifiable; separates from water in 25 minutes at 180°F
- loosens dirt and sludge and cleans pump
- combination of additives makes for true anti-wear lubricant and lengthens pump life
- anti-rust ingredient protects internal parts
- filtered to 1 micron for high purity



PART NO	DESCRIPTION	CASE QTY	LIST
85-2608	8 oz.	12	9.39
85-2600	1 quart	12	15.73
85-2601	1 gallon	6	38.94

## Coldshield

- functions as a heat sink and a heat shielding material
- non-toxic, environmentally safe, non-corrosive and non-flammable
- stops heat from traveling through most metals
- provides a heat barrier from direct, open flame contact



PART NO	DESCRIPTION	CASE QTY	LIST
86-1274-7	thermal paste - 32 oz. tub	12	35.03
86-1273-3	thermal gel - 32 oz. spray bottle	12	22.85

## Acid Test

- for use with all common types of refrigerant oils (mineral, alkylbenzene and POE)
- one test per kit
- unique patented disposable design



PART NO	DESCRIPTION	CASE QTY	LIST
QT2000	QuickCheck acid test kit	—	15.39
QT2500	QwikShot Acid Treatment (4-0.5 oz.)	4	40.97

## Odor Neutralizer – ClenAir

Used to combat stubborn odors, even those built up over time like cigarette or pet odors. Simply place the gel near source of the odor or in return duct of the central air system. The best product available for musty basements. Great for smoke and water damage. Used by HVAC technicians, professional duct cleaners, janitors and real estate agents.



PART NO	DESCRIPTION	CASE QTY	LIST
85-1500	ClenAir gel tubs, .5 lb	24	14.18
85-1501	ClenAir gel tubs, 1 lb	12	23.64
85-1700D	ClenAir spray, 16 oz, citrus	12	17.82
85-1800D	ClenAir gel tubs, .5 lb, cherry	12	14.42

## Fluorescent Refrigerant Dye – Mastercool

- injects directly into the refrigerant to assist in leak detection
- glows in response to UV
- meets or exceeds SAE J2297s



PART NO	DESCRIPTION	LIST
53625	fluorescent refrigerant dye - 2 oz.	41.76

## A/C Easy Seal – Nu-Calgon

- prevents refrigerant leaks and seals existing leaks in air conditioning and refrigeration systems
- eliminates expensive leak search and repair
- treats 1.5-5 ton systems
- utilizes a reusable hose
- travels with refrigerant to find leaks fast



PART NO	DESCRIPTION	CASE QTY	LIST
4050-02	A/C Easy Seal kit	—	262.85
4050-06	A/C Easy Seal, 3 oz.	6	115.00

## A/C EasyDry – Nu-Calgon

- eliminates moisture in residential and commercial systems
- treats up to 5 ton systems
- compatible with all oils and refrigerants
- compliments the system's drier
- prevents acid from forming



PART NO	DESCRIPTION	CASE QTY	LIST
4051-06	A/C EasyDry	6	115.00

## A/C Re-New – Nu-Calgon

- quiets noisy systems
- lowers energy usage
- improves cooling performance
- great for new and old system
- one can treats up to 5 tons



PART NO	DESCRIPTION	LIST
4057-52	2-in-1 display pack	369.39

## Rx11-flush – Nu-Calgon

- RX11-flush is an ozone safe solvent engineered specifically for flushing refrigeration and air conditioning systems and line sets
- works fast and easy to use



PART NO	DESCRIPTION	CASE QTY	LIST
4300-10	2-in-1 display pack	—	486.91
4300-09	Rx11 flush, 1 lb.	6	110.76

## Rx11-flush Starter Kit – Nu-Calgon

- everything the first time user needs for flushing
- enough to flush line sets on two 5 ton systems
- OEM endorsed flush
- the industry standard for flushing for over a decade



PART NO	DESCRIPTION	CASE QTY	LIST
4300-08	Rx11-flush starter kit	3	224.85

## Rx11-flush Liquid Starter Kit – Nu-Calgon

- enhanced chemistry for stronger flushing
- optimal boiling point
- leaves no residue
- non-flammable
- non-toxic
- starter kit includes tank, Rx11 liquid canister, hose, flush gun



PART NO	DESCRIPTION	LIST
4300-38	Rx11-flush liquid starter kit	240.67
4300-30	Rx11-flush non-pressurized liquid, 19.5 oz.	110.76

## Rx11-flush Tools– Nu-Calgon

### FLUSHING TOOL



PART NO	DESCRIPTION	LIST
4300-50	flushing tool	24.24

### FLUSH GUN



PART NO	DESCRIPTION	LIST
4300-51	flushing gun	66.27

### FLUSH HOSE



PART NO	DESCRIPTION	LIST
4300-52	flush hose	48.79

### INJECTION TOOL



PART NO	DESCRIPTION	LIST
4300-89	injection tool for A/C Re-New, Rx11 flush	71.18

**PROTECH**  
Quality HVAC and Plumbing Parts and Supplies



**Copeland**

## Copeland Compressors

Generally speaking, when you replace a compressor, you will need additional parts to complete the repair. The list below will help you remember the parts and materials you should consider before returning to the job.

Acid Test Kits

Contactors

Relays

Start Kits

Start Relays

Start Capacitors

Run Capacitors

Crankcase Heaters

Fittings

Time Delay Relays

Sand Paper

Accumulators

Wire Nuts

Compressor Wires & Lugs

Pressure Controls – High

Pressure Controls – Low

Sight Glasses

Liquid Line Filters

Suction Line Filters

PART NO	DESCRIPTION
ZR16K5E-PFV-800	scroll compressor, R-22, single phase
ZR18K5E-PFV-800	scroll compressor, R-22, single phase
ZR21K5E-PFV-800	scroll compressor, R-22, single phase
ZR21K5E-TF5-800	scroll compressor, R-22, three phase
ZR25K5E-PFV-800	scroll compressor, R-22, single phase
ZR25K5E-TF5-800	scroll compressor, R-22, three phase
ZR28K5E-PFV-800	scroll compressor, R-22, single phase
ZR28K5E-TF5-800	scroll compressor, R-22, three phase
ZR32K5E-PFV-800	scroll compressor, R-22, single phase
ZR32K5E-TF5-800	scroll compressor, R-22, three phase
ZR38K5E-PFV-800	scroll compressor, R-22, single phase
ZR38K5E-TF5-800	scroll compressor, R-22, three phase
ZR38K5E-TFD-800	scroll compressor, R-22, three phase
ZR42K5E-PFV-800	scroll compressor, R-22, single phase
ZR42K5E-TF5-800	scroll compressor, R-22, three phase
ZR42K5E-TFD-800	scroll compressor, R-22, three phase
ZR48K5E-PFV-800	scroll compressor, R-22, single phase
ZR48K5E-TF5-800	scroll compressor, R-22, three phase
ZR48K5E-TFD-800	scroll compressor, R-22, three phase
ZR54K5E-PFV-800	scroll compressor, R-22, single phase
ZR54K5E-TF5-800	scroll compressor, R-22, three phase



## AC System Analyzer – Mastercool

An all-in one tool that not only calculates critical information for the air conditioning system but also diagnoses basic system problems.

- LCD display leads the technician through basic tests making service quicker and less complicated.
- able to calculate: actual superheat, subcool, target superheat, temperature split, dry bulb, wet bulb, relative humidity, dew point, air velocity and air flow volume.
- guides the technician in determining if the refrigerant charge is correct.
- saves test results under a customer/technician name for future reference.



**FREE Mastercool bag with purchase. Promo ends 04-30-2014. To claim your free bag, email proof of purchase to [chris@mastercool.com](mailto:chris@mastercool.com).**

PART NO	DESCRIPTION	LIST
52270	AC System Analyzer w/round vane	882.36
52280	AC System Analyzer w/antenna type meter	1266.18

## Combustion Analyzer Kit – TPI

- pump driven for fast response
- will not shut off if 15 ppm CO is present for increased safety
- store button will save up to 50 readings
- 1 ppm sensitivity
- A740 IR printer for hard copy results
- push on fittings for fast and easy use
- large easy to read backlit display
- sensors can be replaced in field with calibration gas



PART NO	DESCRIPTION	LIST
TPI-709A740C1	Combustion Analyzer Kit w/printer	1590.79

## Digital Manometer – TPI

- 0.001" H2O resolution less than 40
- temperature compensated
- over range protection to 15 psi
- wide range +/-120" H2O; seven units of measure
- inH2O, mbar, KPa, PSI, mmHg, inHg, mmH2O



PART NO	DESCRIPTION	LIST
TPI-621C3	digital manometer	551.42

## Superheat Measurement Kit – C&D Valve

Combines a thermometer and core removal tool to create a reliable and accurate way to measure superheat; allows temperature probe to directly measure refrigerant temperature.



PART NO	DESCRIPTION	LIST
83-CD3970-1PK	superheat measurement kit	142.64

## Thermo-Psychrometer – CPS

Accommodates many temperature, humidity, dry/wet bulb and dew point measurements. Incorporates four discrete temperature ports all capable of min/max and memory functions including temperature differential between any two of the four available ports. Pressing the SCAN key causes display to alternate between all four ports in 3 second intervals providing continuous monitoring of multiple probe points during critical system diagnosis. A dedicated special purpose port accommodates an optional state of the art silicon humidity transducer probe for fast and accurate measurements during critical relative humidity calculations.



- Range -40 to 257°F
- Differential measure between any two probes
- Includes air probe; general purpose probe; surface probe
- Easy to use keypad controls

PART NO	DESCRIPTION	LIST
TM360	multi-input digital thermo-psychrometer & accessories (temp-seeker)	483.36

## Digital Multimeter – CPS

- auto range with data hold
- maximum/minimum value measurement
- backlit LCD display; four large characters
- auto power-off
- audible continuity tester
- diode and transistor hFE tester
- includes electrical probe set and thermocouple
- DC voltage (V): 200m / 2 / 20 / 200 / 600 ±0.7%
- AC voltage (V): 200m / 2 / 20 / 200 / 600 ±0.7%
- DC current (A): 200μ / 2000μ / 20m / 200m ±1.2%; 2 / 10 ±2.0%
- AC current (A): 200μ / 2000μ / 20m / 200m ±1.5%; 2 / 10 ±3.0%
- resistance (ohms): 200 / 2k / 20k / 200k / 2M ±1.2%; 20M ±2.0%
- temperature: -20 to 1000°C ±3.0%, 0°F to 1800°F ±3.0%
- capacitance (F): 20n / 200n / 2μ / 20μ / 200μ / 2000μ ±4.0%



PART NO	DESCRIPTION	LIST
87-DM350	digital multimeter	110.09

## Digital Multimeter – Klein Tools

- auto/manual range
- data hold
- maximum/minimum value measurement
- backlit LDC display and worklight
- audible continuity tester
- diode tester
- magnetic mount
- DC voltage (V): 4/400 +0.5%; 1000 +0.8%
- AC voltage (V): 400m/750 + 2.0%
- DC current (A): 400μ/2000μ +1.2%
- AC current (A): 400μ +2%; 2000 μ +1.5%; 40μ +2.9%; 400 +1.9%
- resistance (ohms): 400/4M +1%; 40M +2.0%
- includes electrical probe set and carrying case



PART NO	DESCRIPTION	LIST
CL1000	digital clamp-on multimeter	244.70



## Manifold – Mastercool

Large easy to read LCD displays pressures, saturated temperatures, actual temperatures, superheat and subcooling temperatures for over 60 refrigerants. When used with the clamp-on thermocouple connector, it will display the actual temperature and automatically calculates the superheat or subcool temperature. When the vacuum sensor cable is attached to the manifold it will display deep vacuum. To ensure lasting performance and durability, the manifold case is constructed of ABS material and protected by a rugged rubber boot.



PART NO	DESCRIPTION	LIST
99661-A	manifold - digital 2-way kit	935.97

## ECM Motor Tester – Genteq

A low cost, easy to use device that will analyze ECM motors independent of the HVAC system; it operates in the basic HVAC settings of fan only, heating, cooling and dehumidification.

- suitable for use with Genteq (GE) ECM 2.0, 2.3, and 3.0 series motors
- specially designed to detect and isolate motor failures from other HVAC system failures
- includes a 16 to 4-pin connector, ECM service guide, ThinkTank 3.0 service overview



PART NO	DESCRIPTION	LIST
PD510009	TECMate Pro ECM motor tester	127.24

## ECM Motor Tester – Zebra

The best tool to diagnose what's going on in an ECM System is an in-line diagnostic tool. The Variable Speed Zebra is exactly that: a tool that connects between the air handler's circuit boards and the motor.

- operates in-line with the system, in real time, testing both major sections (motor and control boards) simultaneously
- monitors the signals going out of the circuit boards, displays them for you and then either (a) passes them along to the motor, or (b) allows you to interrupt the signals and control all the functions of the motor directly
- displays the motor's CFM airflow, the motor's RPM, and the control voltages being sent to the motor's electronics module
- two DVD's are included to teach ECM Theory and ECM Troubleshooting; a printed manual is also included



PART NO	DESCRIPTION	LIST
VZ-7	variable speed Zebra ECM motor tester	795.00

## Refrigerant Recovery – Mastercool

The complete solution to your recovery needs.

- safety high pressure switch
- simple internal structure for field service
- largest volume recovery rate in market
- injection molded high density polyethylene case for maximum durability
- front cover has bumper guards built in to reduce damage to the control knob
- for use with all refrigerants including R410A
- revolutionary double piston oil-less compressor



PART NO	DESCRIPTION	LIST
69300	twin turbo refrigerant recovery machine	1600.73

## Rescue Select Blower Motors – U.S. MOTORS

The RESCUE Select is an ECM aftermarket motor that replaced OEM constant torque blower motors.

- no need to wait for the OEM motor to be ordered, customized programming performed at the store counter
- replaces X-13, Endura Pro and SelectTech constant torque ECM motors
- patented high efficiency design with smooth, quiet start up
- wired to OEM equipment using the existing connection for ease of installation
- direct OEM replacement – programmed torque values set to match OEM performance
- 6000V surge protection – more the double the protection of any OEM motors
- fully potted electric module for superior moisture protection
- motor and module technology create smooth, quiet speed changes
- two-year limited warranty



PART NO	HP	VOLTS	RPM	DESCRIPTION	LIST
KIT41				SelectTech / RESCUE Select Programming Module	1219.61
6630RS	1/3–1/2	120V		RESCUE Select Blower Motor	618.09
6631RS	1/3–1/2	208–230V		RESCUE Select Blower Motor	618.09
6640RS	3/4	120V		RESCUE Select Blower Motor	718.52
6641RS	3/4	208–230V		RESCUE Select Blower Motor	718.52
6650RS	1	120V		RESCUE Select Blower Motor	856.15
6651RS	1	208–230V		RESCUE Select Blower Motor	856.15

# Merchandising Display

## Merchandiser – PROTECH™

The PROTECH gas and electric parts Plan-O-Gram features the most common parts assortment for gas and electric water heater repairs. This turnkey program is a great addition to your repair parts offering, and a great way to get into the water heater repair parts segment.

The parts display and full color header card are included with the kit. Your initial order of SP13266 is 35% off regular Distributor Net pricing during this promotional period.

Merchandiser Kit includes:

- 3 SP6379K thermocouple (17")
- 3 SP11699 thermostat (electric)
- 3 SP6830 Adapt-O-Flange element conversion kit
- 3 SP6379R thermocouple (24")
- 3 SP10869MM element (240v/4500w, stainless steel, resistered, LWD, 1" screw-in)
- 3 SP8346 temperature and pressure relief valve (long shank)
- 3 SP10374 compression fitting connectors (3/4" NPT x 3/4" tube)
- 3 SP6571B temperature and pressure relief valve (T&P)
- 3 SP11698 thermostat (electric)
- 3 SP8980C pilot assembly (LP)
- 3 SP20060 electric water heater tune-up kit
- 3 SP20010 gas water heater installation kit (12" connectors)
- 3 SP10552KH element (240v/3500w, copper resistered, HWD, 1" screw-in)
- 3 SP12039 drain valve (poly)
- 3 SP35871AB element wrench (fits 1-1/2" hex)
- 3 SP8980B pilot assembly (NG)
- 3 SP10972 ignitor (hot surface ignition (HSI))
- 3 SP10354 compression fitting connectors (3/4" NPT x 1/2" tube)
- 3 SP20164 gas control thermostat (NG)
- 3 SP12258B gas control thermostat (LP)
- 3 SP11695 thermostat (electric)
- 3 SP20003 nipples (heat trap, 3/4" NPT x 3" long, pack of 2)
- 3 SP10552PL element (240v/5500w, copper resistered, MWD, 1" screw-in)
- 3 SP8397G nipples (plastic-lined, 3/4" NPT x 2-1/4" long, pack of 2)
- 3 SP10552ML element (240v/4500w, copper resistered, MWD, 1" screw-in)
- 3 SP10552MH element (240v/4500w, copper resistered, HWD, 1" screw-in)
- 3 SP20009 water connection kit (12" connectors)
- 3 SP20011 electric water heater installation kit (12" connectors)
- 1 AP13266 packaged display board with header

PART NO	DESCRIPTION
SP13266	water heater merchandiser





The new degree of comfort.™

# WELC<sup>o</sup>ME

## TO CONTINUOUS HOT WATER



### **The Next Level of Tankless:** Prestige™ high efficiency condensing tankless gas water heaters

- 94% energy efficient and exceeds Energy Star® requirements
- Indoor direct vent with PVC piping and outdoor models
- RTGH-95 series – 11,000-199,900 Btu/h for 3 bathroom homes
- RTGH-84 series – 11,000-157,000 Btu/h for 2-3 bathroom homes

**AVAILABLE THROUGH OUR  
REPLACEMENT PARTS DIVISION**







CONDENSING TANKLESS  
WATER HEATER | RESIDENTIAL GAS

# CONTINUOUS HOT WATER YOU CAN COUNT ON

**THE NEXT LEVEL OF TANKLESS:**  
ULTRA™ HIGH EFFICIENCY CONDENSING  
TANKLESS GAS WATER HEATERS

- 94% energy efficient and exceeds Energy Star® requirements
- Indoor direct vent with PVC piping and outdoor models
- RUTGH-95 series – 11,000-199,900 Btu/h for 3 bathroom homes
- RUTGH-84 series – 11,000-157,000 Btu/h for 2-3 bathroom homes

**AVAILABLE THROUGH OUR  
REPLACEMENT PARTS DIVISION**



RUUD.COM

RELY ON RUUD.™



# 2014 SPRING PRESEASON PROMOTION PRODUCT LISTING

PART NO	DESCRIPTION	PAGE
00280	A/C Leak Freeze	25
00282	A/C Leak Freeze w/Magic Frost	25
00284	A/C Leak Freeze	25
00286	A/C Leak Freeze w/Magic Frost	25
00290	Adapter for A/C Leak Freeze	25
00292	Adapter for A/C Leak Freeze	25
03-3060-80-L	Gloves	22
03-3060-80-XL	Gloves	22
03-3110-80-L	Gloves	22
03-3110-80-XL	Gloves	22
03-3200-78-L	Gloves	22
03-3200-78-XL	Gloves	22
1246-02-1	Bimetal Pocket Test	21
1859	Condenser Motor	9
1859PEP	Condenser Fan Motor	9
1860	Condenser Motor)	9
1860PEP	Condenser Fan Motor	9
1861	Condenser Motor	9
1861PEP	Condenser Fan Motor	9
1862	Condenser Motor)	9
1862PEP	Condenser Fan Motor	9
1863	Blower Motor	9
1864	Blower Motor	9
1865	Blower Motor	9
1868	Condenser Motor	9
1971	Blower Motor	9
1972	Blower Motor	9
1973	Blower Motor	9
1F78-144	Thermostat	5
1F78-151	Thermostat	5
1F89-0211	Thermostat	5
21006462	CO Alarm	5
21008908	CO Alarm	5
32140312	Thermostat Cable	17
32145012	Thermostat Cable	17
32760312	Thermostat Cable	17
32765012	Thermostat Cable	17
3736PEP	Condenser Fan Motor	9
3737PEP	Condenser Fan Motor	9
3738PEP	Condenser Fan Motor	9
4050-02	A/C Easy Seal	26
4050-06	A/C EasySeal	26
4051-06	A/C EasyDry	26
4057-52	A/C Re-New	26
4081-75	CalClean	24
4083-75	Degreasing Solvent	24
4120-08	Alka-Brite Plus	24
4133-08	Cal-Brite	24
4168-08	Evap Pow'r-C	24
4171-75	Evap Foam No Rinse	24
4186-24	Green Clean	24
42-25102-01	Contactora	12

PART NO	DESCRIPTION	PAGE
42-25103-01	Contactora	12
42-25103-03	Contactora	12
42-25104-06	Relay - SPDT	13
42-25106-01	Relay - DPDT	13
42-KS1	Kickstart	13
42-T05	Kickstart	13
425066	Contactora	13
425068	Contactora	13
425069	Contactora	13
425070	Contactora	13
4290-75	Nu-Blast Coil Cleaner	24
4291-08	Nu-Brite	24
4293-04	Nu-Foam Expanding Foam	24
4296-50	Pan Spray	24
43-25134-01	Capacitor	12
43-25134-02	Capacitor	12
43-25134-03	Capacitor	12
43-25134-04	Capacitor	12
43-25134-05	Capacitor	12
43-25134-06	Capacitor	12
43-25139-03	Capacitor	12
43-25139-04	Capacitor	12
43-25139-08	Capacitor	12
43-25139-13	Capacitor	12
43-25139-16	Capacitor	12
43-25139-19	Capacitor	12
43-25139-21	Capacitor	12
4300-08	Rx11-flush	26
4300-09	Rx11-flush	26
4300-10	Rx11-flush	26
4300-30	Rx11-flush	26
4300-38	Rx11-flush	26
4300-50	Rx11 Flushing Tool	26
4300-51	Rx11 Flush Gun	26
4300-52	Rx11 Flush Hose	26
4300-89	Injection Tool	26
4366-87	Scrubs-In-A-Bucket	22
439102	Turbo200	12
439103	TurboMeter	12
455005	Conduit Fitting	16
46-25107-04	Transformer	13
47104807	Thermostat Cable	16
47130307	Thermostat Cable	16
47160307	Thermostat Cable	16
47160907	Thermostat Cable	16
49P11-843	Sure Switch	13
51-23012-31	Blower Motor	7
51-23012-41	Furnace Motor	7
51-23017-42	Blower Motor	7
51-23022-41	Air Handler Motor	7
51-23023-31	Blower Motor	7
51-23024-31	Blower Motor	7

PART NO	DESCRIPTION	PAGE
51-23052-11	Condenser Motor	7
51-23053-11	Condenser Motor	7
51-23053-21	Condenser Motor	7
51-23054-11	Condenser Motor	7
51-23055-11	Condenser Motor	7
51-23055-12	Condenser Motor	7
52223-A	Digital Pocket Thermometer	21
52224A	Infrared Thermometer	21
52246	Subcool/Superheat Calculator	21
52270	AC System Analyzer	28
52280	AC System Analyzer	28
53625	Fluorescent Refrigerant Dye	25
54-1620-E3	Filter Base	11
54-1625-G3	Filter Base	11
54-1625-G6	Filter Base	11
54-2025-E6	Filter Base	11
54-25051-01	Media Filter Replacement	10
54-25051-02	Media Filter Replacement	10
54-25051-03	Media Filter Replacement	10
54-25051-04	Media Filter Replacement	10
54-25051-10	Media Replacement Filter	10
54-25051-11	Media Replacement Filter	10
54-25051-12	Media Replacement Filter	10
54-25051-13	Media Replacement Filter	10
540023	Return Grill Filter	10
540024	Return Grill Filter	10
540027	Return Grill Filter	10
540031	FilterLock	17
5460	Blower Motor	8
5461	Blower Motor	8
5462	Condenser Motor	8
5464	Condenser Motor	8
5465	Condenser Motor	8
55100	Electronic Leak Detector	20
55200	Electronic Leak Detector	20
59861	Manifold	21
5SME39HXL110	Blower Motor	9
5SME39SXL111	Blower Motor	9
61118	A/C Shine	24
612825	Lineset	16
612835	Lineset	16
612850	Lineset	16
6142-20-3	Panel Thermometer	16
614825	Lineset	16
614835	Lineset	16
614850	Lineset	16
62010	Refrigerant Recovery Cylinder	21
630500	Smart Flow Elbow	16
640010	Duct Strap	16
6630RS	RESCUE Select Blower Motor	8,29
6631RS	RESCUE Select Blower Motor	8,29
6640RS	RESCUE Select Blower Motor	8,29

PART NO	DESCRIPTION	PAGE
6641RS	RESCUE Select Blower Motor	8,29
6650RS	RESCUE Select Blower Motor	8,29
6651RS	RESCUE Select Blower Motor	8,29
670020	Fibered Mastic	25
670021	Smooth Mastic	25
686013	Vinyl Tubing	15
686014	Vinyl Tubing	15
686015	Vinyl Tubing	15
69300	Refrigerant Recovery Machine	20,29
694-12	Staples	22
694-14	Staples	22
70051	Flaring Tool	19
70053	Flaring & Swaging Tool Set	19
70070	Tube Bender Kit	19
73610-Z	Fin & Coil Whisk	19
73621-Z	Fin Comb Scraping Tool	19
777ID	Electrical Tape	22
83-25151-16	Liquid Line Filter Drier	15
83-25151-23	Liquid Line Filter Drier	15
83-25151-24	Liquid Line Filter Drier	15
83-25152-03	Liquid Line Filter Drier	15
83-25152-05	Liquid Line Filter Drier	15
83-25153-07	Suction Line Filter Drier	15
83-25153-08	Suction Line Filter Drier	15
83-25153-10	Suction Line Filter Drier	15
83-25208-03	Liquid Line Filter Drier	15
83-25208-04	Liquid Line Filter Drier	15
83-25211-02	Sight Glass	21
83-CD3970-1PK	Superheat Measurement Kit	28
84-12X20-1	Media Cleaner	10
84-12X25-1	Media Cleaner	10
84-14X20-1	Media Cleaner	10
84-16X20-1	Media Cleaner	10
84-16X25-1	Media Cleaner	10
84-16X30-1	Media Cleaner	10
84-1RF-20X25-1	Media Cleaner	10
84-20X20-1	Media Cleaner	10
84-20X25-1	Media Cleaner	10
84-20X30-1	Media Cleaner	10
84-24X24-1	Media Cleaner	10
84-24X30-1	Media Cleaner	10
84-25050-01	Media Air Cleaner	10
84-25050-03	Media Air Cleaner	10
84-25050-05	Media Air Cleaner	10
84-25050-06	Media Air Cleaner	10
84-25052-07	Electronic Air Cleaner	10
84-25052-08	Electronic Air Cleaner	10
84-25052-09	Electronic Air Cleaner	10
84-25054-09	By-Pass Humidifier	11
84-25054-10	By-Pass Humidifier	11
84-25054-11	Flow-Thru Humidifier	11
84-25054-12	Flow-Thru Humidifier	11

PART NO	DESCRIPTION	PAGE
84-25175-04	Disconnect Switch	17
84-25175-05	Disconnect Switch	17
84-25X25-1	Media Cleaner	10
84-28X34-1	Media Cleaner	10
84-ERV100	Energy Recovery Ventilator	10
84-HRV100	Heat Recovery Ventilator	10
84-SS1	Overflow Safety Switch	14
84-SS2	Overflow Safety Switch	14
84-SS3	Overflow Safety Switch	14
84-VCMA-15UL	Condensate Pump	14
84-VCMA-15ULS	Condensate Pump	14
84-VCMA-15ULST	Condensate Pump	14
8431	Non-Metallic Conduit	15
8432	Non-Metallic Conduit	15
849040	HVAC Whip	16
849041	HVAC Whip	16
849042	HVAC Whip	16
849046	Duct Smoke Detector	5
849101	Shoe Covers	22
849122	Coveralls	22
849166	Gloves	22
849167	Gloves	22
849169	Gloves	22
85-1101	Condenser Coil Cleaner	24
85-1500	ClenAir Gel Tubs	25
85-1501	ClenAir Gel Tubs	25
85-1700D	ClenAir Spray	25
85-1800D	ClenAir Gel Tubs	25
85-2600	Vacuum Pump Oil	25
85-2601	Vacuum Pump Oil	25
85-2608	Vacuum Pump Oil	25
85-C01	Condenser Coil Cleaner	24
85-EC01	Coil Cleaner	24
85-S2608-1G	Poly Sprayer	25
85-S2609-2G	Poly Sprayer	25
86-05857-00	Trouble Light	22
86-05858-00	Trouble Light	22
86-1273-3	Thermal Gel	25
86-1274-7	Thermal Paste	25
86-25172-03	Hanger Strap	16
86-333	Expanding Foam	24
86-33324	Expanding Foam	24
86-370A	HVAC/R Silicone	24
86-370C	HVAC/R Silicone	24
86-370W	HVAC/R Silicone	24
86-6966F-1PK	HVAC Connector Kit	13
86-6967F-1PK	HVAC Connector Kit	13
86-ERFS	Fuse Display	13
86-ERFSE	Fuse Display	13
87-631S	Nut Driver Set	18
87-68310	Wrench	18
87-70078	Pipe Cutter	18

PART NO	DESCRIPTION	PAGE
87-70581	Hex Key Set	18
87-CADS1	A/C Drain Sucker	19
87-CC220	Refrigerant Charging Scales	20
87-DM350	Digital Multimeter	29
87-MV2D2	Manifold	21
87-P6510L	Aviation Snips	19
87-P6510R	Aviation Snips	19
87-P6510S	Aviation Snips	19
87-TC174	Tube Cutter	18
87-TC274	Tube Cutter	18
87-TLFC1	Fin Tool	19
87-TLPO	Pliers	18
87-TLSWL	Service Wrench	18
87-TLSWO	Offset Wrench	18
87-TLSWS	Service Wrench	18
87-TM50	Electronic Thermometer	21
87-TMINI12	Infrared Thermometer	21
8904	Blower Motor	9
8905	Blower Motor	9
8945	Spray Wand	22
90065	Vacuum Pump	21
90066-2V-110	Vacuum Pump	21
90067	Vacuum Pump	21
92110001	Equipment Pad	17
92110002	Equipment Pad	17
92110007	Equipment Pad	17
92110008	Equipment Pad	17
92110010	Equipment Pad	17
92110011	Equipment Pad	17
92110012	Equipment Pad	17
92110013	Equipment Pad	17
92110015	Equipment Pad	17
92110016	Equipment Pad	17
92110017	Equipment Pad	17
92120002	Equipment Pad	17
92120003	Equipment Pad	17
92120007	Equipment Pad	17
92120009	Equipment Pad	17
92120011	Equipment Pad	17
92120015	Equipment Pad	17
93110001	Equipment Pad	17
93110002	Equipment Pad	17
93110006	Equipment Pad	17
93110010	Equipment Pad	17
93110012	Equipment Pad	17
93110014	Equipment Pad	17
93110016	Equipment Pad	17
93120006	Equipment Pad	17
93120010	Equipment Pad	17
93120016	Equipment Pad	17
93120021	Equipment Pad	17
93120022	Equipment Pad	17

PART NO	DESCRIPTION	PAGE
98310	Refrigerant Charging Scale	20
98315	Refrigerant Charging Scale	20
9906	10 Unit Display	23
9915	12 Counter Display	23
99661-A	Manifold	29
AB111AR	Safety Glasses	23
AC11812	Tubing Insulation	15
AC11838	Tubing Insulation	15
AC1238	Tubing Insulation	15
AC3412	Tubing Insulation	15
AC3438	Tubing Insulation	15
AC3838	Tubing Insulation	15
AC5812	Tubing Insulation	15
AC5838	Tubing Insulation	15
AC7812	Tubing Insulation	15
AC7838	Tubing Insulation	15
ACGUKIT	AC Security Cage	19
AG-1100+	Water Sensor	14
AG-3150E	Water Sensor	14
AG-G28X69	Drain Pan	15
AG-G30X50	Drain Pan	15
AG-G30X62	Drain Pan	15
AG-GF30X36	Drain Pan	15
AG-GF34X79	Drain Pan	15
BLE2-1620-2	Filter Base	11
BLE2-2020-2	Filter Base	11
BLG2-1425-2	Filter Base	11
BLG2-1625-2	Filter Base	11
BLG2-2025-2	Filter Base	11
BV-5	BucketVac	22
CJ-95	Coil Cleaning System	22
CL1000	Multimeter	28
D12812025	Work Light	22
D4120	Duct Smoke Detector	5
D4120W	Duct Smoke Detector	5
D75	Whole House Dehumidifier	11
D95	Whole House Dehumidifier	11
DS1420	Duct Saddle	16
DS712	Duct Saddle	16
DS712V	Duct Saddle	16
DST1	Sampling Tube	5
DST1.5	Sampling Tube	5
DST3	Sampling Tube	5
DZ111	Safety Glasses	23
DZ111-2.0	Safety Glasses	23
DZ112	Safety Glasses	23
DZ116	Safety Glasses	23
EMF-1	Magnetic Flashlight	22
EMF-2	Magnetic Flashlight	22
EZT-113	Cross Trap Kit	15
EZT-113B	Cross Trap Kit	15
EZT-205	Cross Trap Kit	15

PART NO	DESCRIPTION	PAGE
EZT-207	Cross Trap Kit	15
EZT-210	Cross Trap Kit	15
EZT-219	Cross Trap Kit	15
EZT-224	Safety Switch	14
EZT-226	Safety Switch	14
FPSC5001U	Flood Prevention Sensor	14
FPSC5002U	Flood Prevention Sensor	14
FSC5002U	Flood Prevention Sensor	14
FSND-1	Flexible Shaft Nut Driver	18
KIT41	Programming Module	8,29
MG-LC	Mean Green Adhesive	24
PD411060	Thermostat	4
PD411061	Thermostat	4
PD411062	Thermostat	4
PD411063	Thermostat	4
PD411064	Thermostat	4
PD411065	Thermostat	4
PD411066	Thermostat	4
PD411067	Thermostat	4
PD411072	Thermostat	4
PD411073	Wall Plate	4
PD411085	Thermostat	4
PD411086	Wireless Wire	4
PD411087	Thermostat	4
PD411088	Thermostat	4
PD411089	Thermostat	4
PD411090	Thermostat	4
PD411092	Thermostat	5
PD411093	Thermostat	4
PD411094	Thermostat	5
PD411095	Thermostat	5
PD411096	Thermostat	5
PD411097	Thermostat	4
PD411103	Thermostat	4
PD455006	Conduit Fitting	16
PD455007	Conduit Fitting	16
PD455008	Conduit Fitting	16
PD455009	Flexible Conduit	15
PD510009	Motor Tester	29
PD510011	Kit for Motor Programmer	8
PD540022	Return Grill Filter	10
PD540025	Return Grill Filter	10
PD540026	Return Grill Filter	10
PD610016	Solenoid Test Magnet	19
QT2000	Acid Test Kit	25
QT2500	Acid Treatment	25
QT2810	Compressor Terminal Repair Kit	13
QT2812	Compressor Terminal Repair Kit	13
QT2910	Compressor Terminal Repair Kit	13
RZ250W	Outdoor Temperature Sensor	4
RZ251W	Indoor Sensor/Zone Control	4
SD-10	Slide Driver	18

PART NO	DESCRIPTION	PAGE
SD-3	Slide Driver	18
SD-7	Slide Driver	18
SDBD-1	Slide Driver	18
SI1805SIUS11	Condensate Pump	14
SI1820SIUS11	Condensate Pump	14
SI3000SIUS11	Mini Condensate Pump	14
SI3000SIUS23	Mini Condensate Pump	14
SI3200SIUS11	Mini Condensate Pump	14
SI3200SIUS23	Mini Condensate Pump	14
SM-501-N	Smoke Detector	5
SS-1	Hard Start Kit	13
SS-5	Hard Start Kit	13
TM360	Digital Thermo-Psychrometer	28
TPI-621C3	Digital Manometer	28
TPI-709A740C1	Combustion Analyzer Kit	28
TSDK215	Safety Glasses	23
TSKAP218	Safety Glasses	23
TSKXL-111	Safety Glasses	23
TSM21-G15-7	Safety Glasses	23
TSM216	Safety Glasses	23
TSRAP	Safety Glasses	23
TXB216-S	Safety Glasses	23
UC2436-2	Equipment Pad	17
UC2436-3	Equipment Pad	17
UC3030-2	Equipment Pad	17
UC3030-3	Equipment Pad	17
UC3445-3	Equipment Pad	17
UC3636-3	Equipment Pad	17
UP-1	Fan Puller	19
VPTST	Motor Checkers	20
VZ-7	Motor Tester	20,29
VZH03	Motor Adapter	20
VZH04	Furnace Adapter	20
VZH06	Condenser Motor Adapter	20
VZPRO	Motor Surge Protector	20
VZREP	Motor Repair Kit	20
W51-12BAA3-01	Blower Motor	6
W51-12BJA3-01	Blower Motor	6
W51-12CJA1-01	Condenser Motor	6
W51-13BAA3-01	Blower Motor	6
W51-13BJA3-01	Blower Motor	6
W51-13CJA1-01	Condenser Motor	6
W51-14BAA3-01	Blower Motor	6
W51-14BJA3-01	Blower Motor	6
W51-14CJA1-01	Condenser Motor	6
W51-16CJA1-01	Condenser Motor	6
W51-34BAA3-01	Blower Motor	6
W51-34BJA3-01	Blower Motor	6
W51-MHCJA1-01	Condenser Motor	6
Z2K955WDA	Zone Kit Control	4
ZCTRK	Compressor Terminal Repair Kit	16
ZFPAS	Fuse Assortment	13



Rheem Replacement Parts  
4744 Island Ford Road  
Randleman, North Carolina 27317

Solutions made simple... just for you.



**HAWAII'S HVAC SUPERSTORE**

2225 Hoonee Place, Honolulu, HI  
808.841.7400

[www.facebook.com/admorhvac](http://www.facebook.com/admorhvac)

[www.twitter.com/admorhvac](http://www.twitter.com/admorhvac)

[www.coolingcancer.org](http://www.coolingcancer.org)

**WWW.ADMORHVAC.COM**