



# **BIPAC 7100SG/7100G**

**802.11g ADSL Router**

**Quick Start Guide**





**For more detailed instructions on configuring and using the 802.11g ADSL Router, please refer to the on-line manual.**

## Package Contents

- Billion BIPAC 7100SG/7100G ADSL Router
- CD-ROM containing the online manual
- RJ-11 ADSL/telephone Cable
- Ethernet (CAT-5 LAN) Cable
- AC-DC power adapter (12VDC, 1A)
- This Quick Start Guide



### **Warning**

- ✓ Do not use the BIPAC 7100SG/7100G in high humidity or high temperatures.
- ✓ Do not use the same power source for the BIPAC 7100SG/7100G as other equipment.
- ✓ Do not open or repair the case yourself. If the BIPAC 7100SG/7100G is too hot, turn off the power immediately and have it repaired at a qualified service center.
- ✓ Avoid using this product and all accessories outdoors.

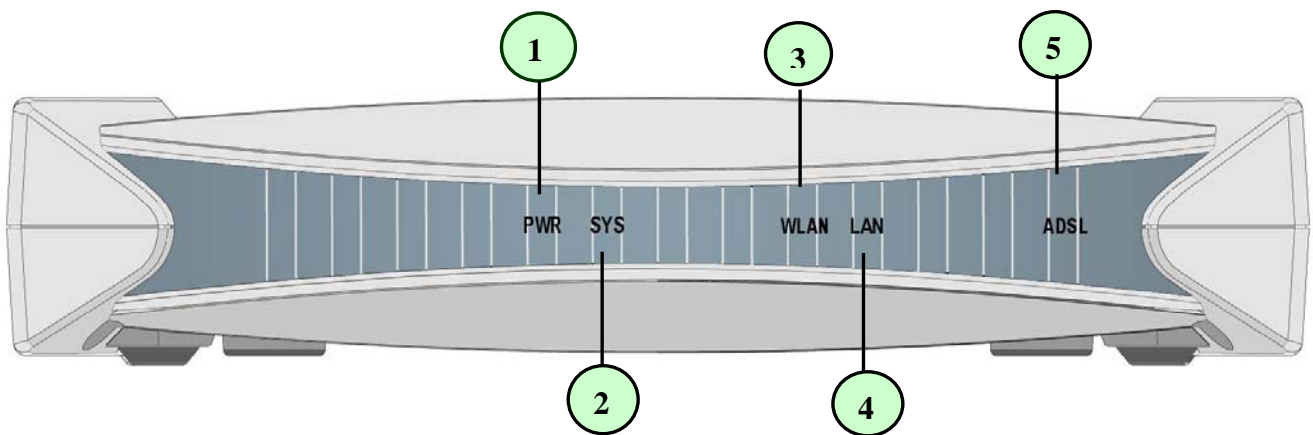


### **Attention**

- ✓ Place the BIPAC 7100SG/7100G on a stable surface.
- ✓ Only use the power adapter that comes with the package. Using a different voltage rating power adaptor may damage the router.

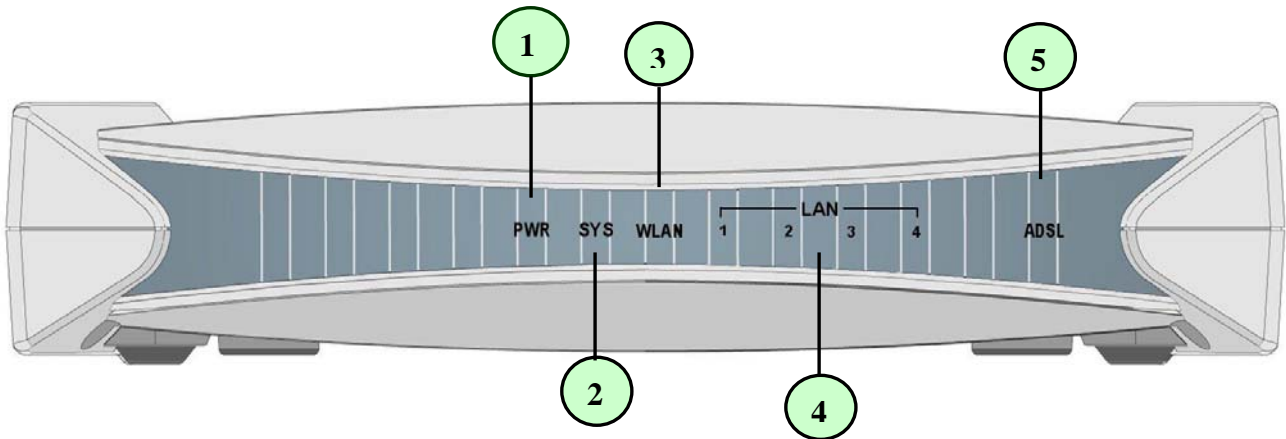
## The Front LEDs

- 7100SG



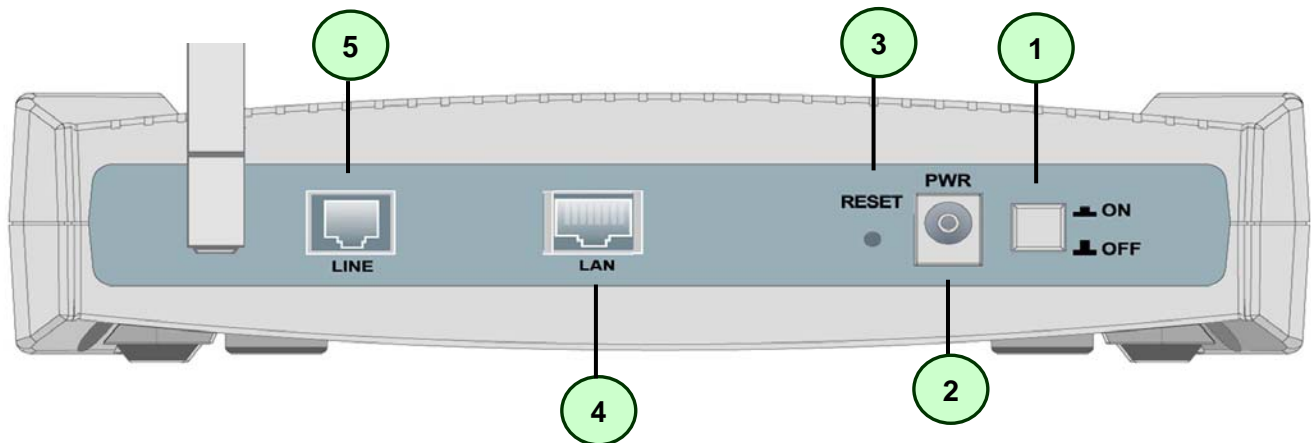
LED		Meaning
1	PWR	● Lit green when power adapter is connected.
2	SYS	● When lit, it indicates that the device is working properly.
3	WLAN	● Lit green when the wireless connection is established. Flashes when sending/receiving data.
4	LAN	● Lit green when the LAN link is connected.
5	ADSL	● When lit, it indicates that the ADSL (Line) port is connected to the DSLAM and working properly.

● 7100G



LED		Meaning
1	PWR	● Lit green when power adapter is connected.
2	SYS	● When lit, it indicates that the device is working properly.
3	WLAN	● Lit green when the wireless connection is established. Flashes when sending/receiving data.
4	LAN1	● Lit green when the LAN1 link is connected.
	LAN2	● Lit green when the LAN2 link is connected.
	LAN3	● Lit green when the LAN3 link is connected.
	LAN4	● Lit green when the LAN4 link is connected.
5	ADSL	● When lit, it indicates that the ADSL (Line) port is connected to the DSLAM and working properly.

## The Rear Ports



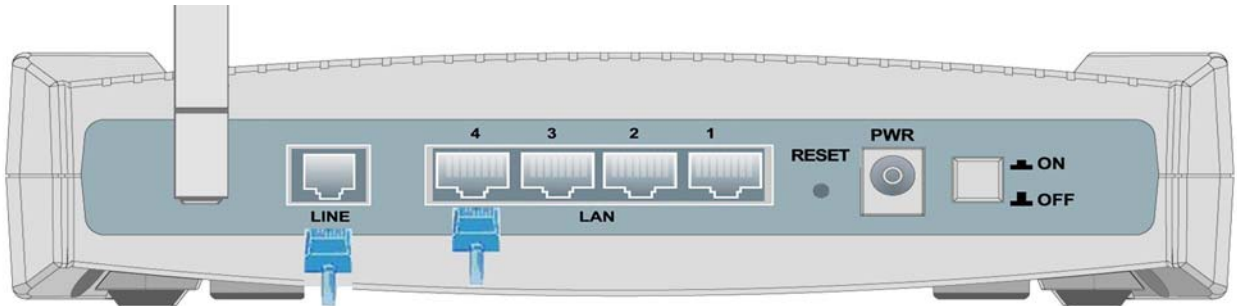
Port		Meaning
1	Power Switch	Power ON/OFF switch
2	PWR	Connect the supplied power adapter to this jack.
3	RESET	After the device is powered on, press it to reset the device or restore to factory default settings. <b>0-3 seconds:</b> reset the device <b>6 seconds above:</b> restore to factory default settings (this is used when you can not login to the router, e.g. forgot the password)
4	LAN	Connect a UTP Ethernet cable (Cat-5 or Cat-5e) to the LAN ports when connecting to a PC or an office/home network of 10Mbps or 100Mbps.
5	LINE	Connect the supplied RJ-11 ("telephone") cable to this port when connecting to the ADSL/telephone network.

**NOTE:**

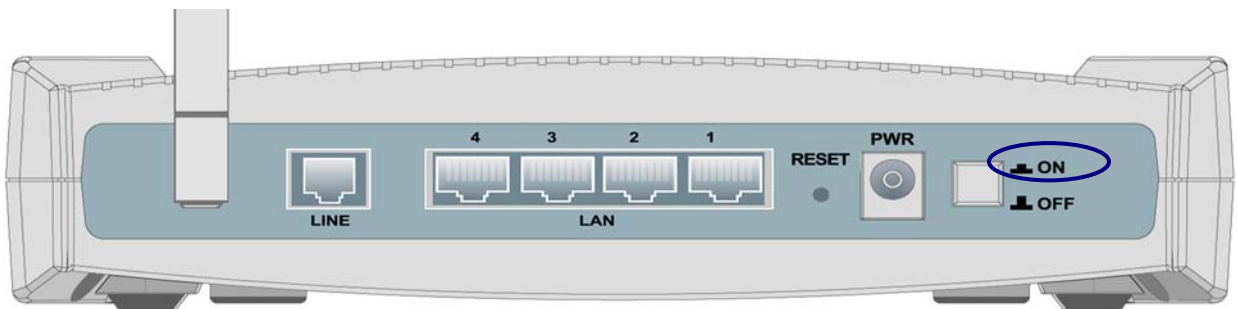
BIPAC 7100G has 4 LAN ports, and each of them has the same function as that of 7100SG.

## Connecting Your ADSL Router

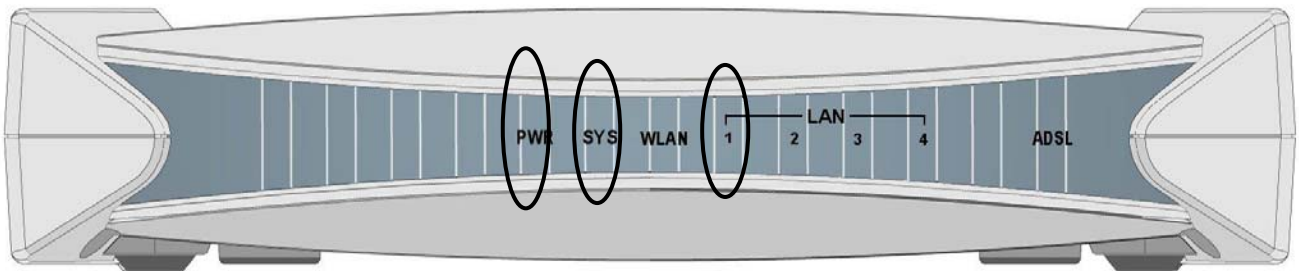
1. Connect the Router to a **LAN** (Local Area Network) and the ADSL/telephone (**LINE**) network.



2. Power on the device.



3. Make sure the **PWR** and **SYS** LEDs are lit steadily and that the **relevant LAN** LED is lit.



Quick Start Guide

- 7100SG

Wireless Security(WEP,WPA)



- 7100G

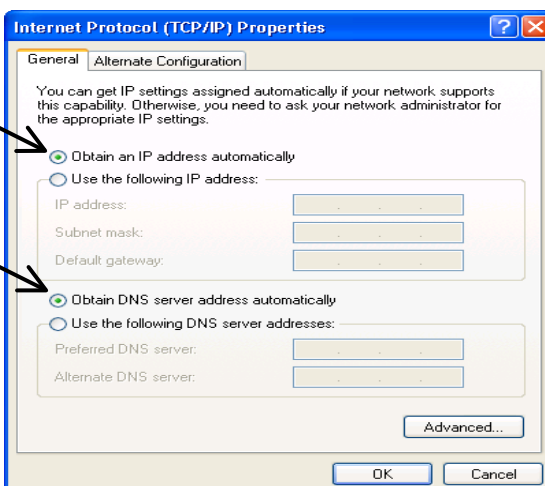
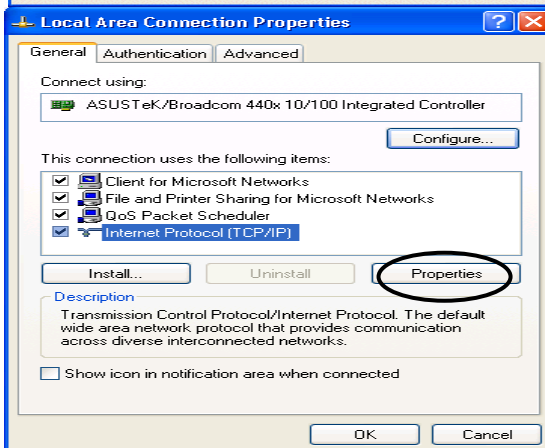
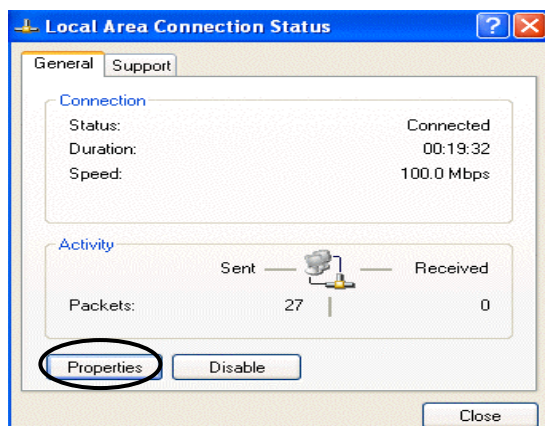
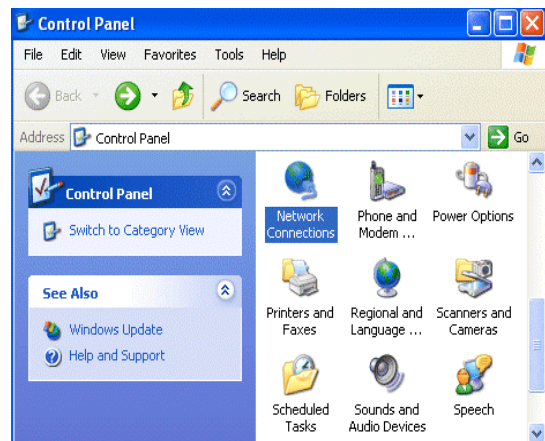
Wireless Security ( WEP, WPA)





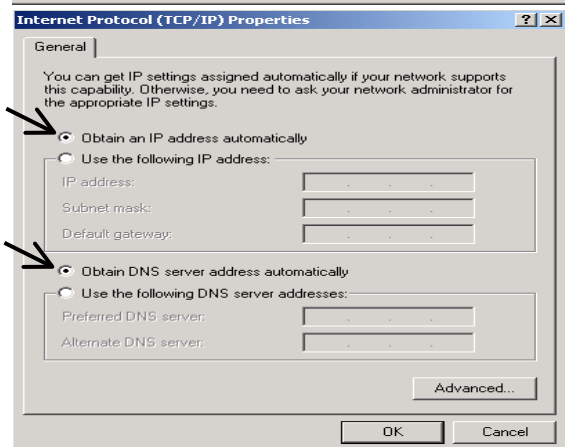
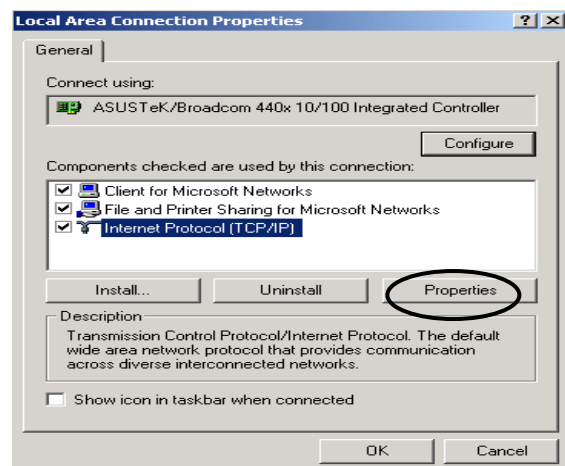
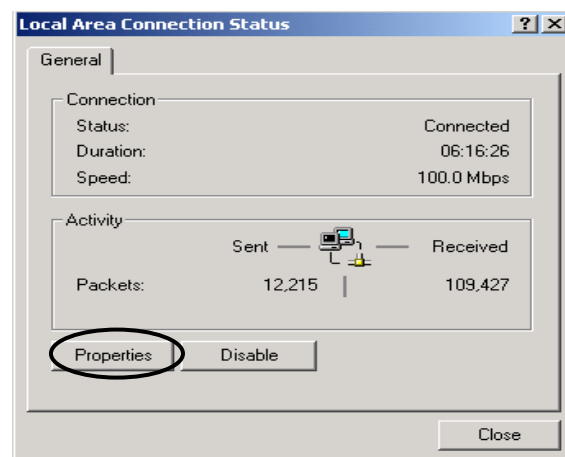
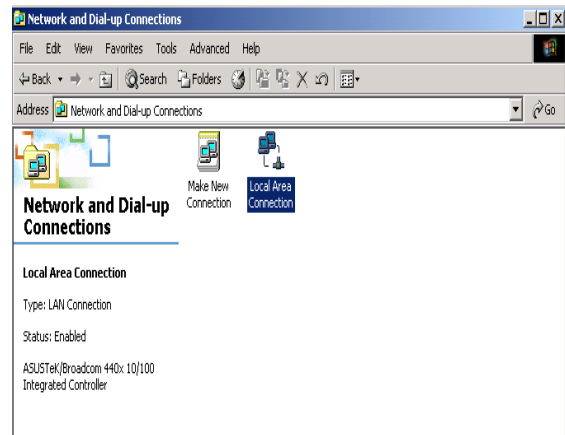
## Configuring PC in Windows XP

1. Go to **Start / Control Panel (in Classic View)**. In the Control Panel, double-click on **Network Connections**
2. Double-click **Local Area Connection**.
3. In the **Local Area Connection Status** window, click **Properties**.
4. Select **Internet Protocol (TCP/IP)** and click **Properties**.
5. Select the **Obtain an IP address automatically** and the **Obtain DNS server address automatically** radio buttons.
6. Click **OK** to finish the configuration.



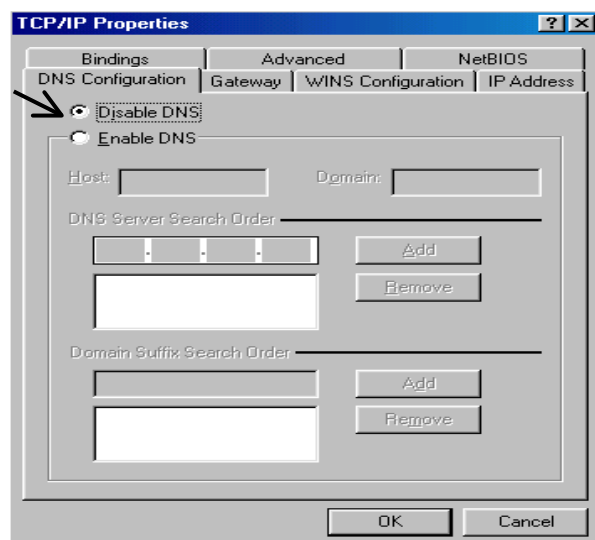
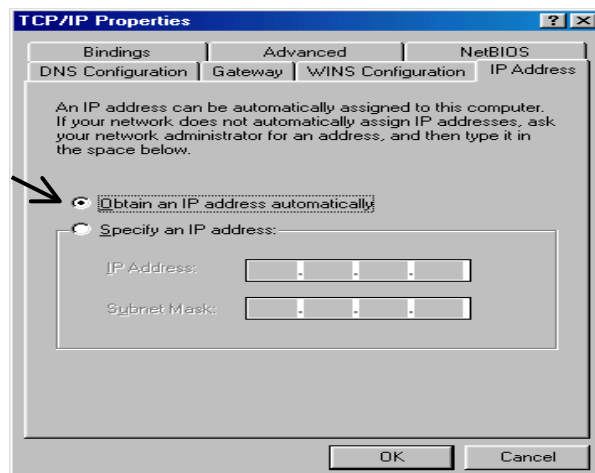
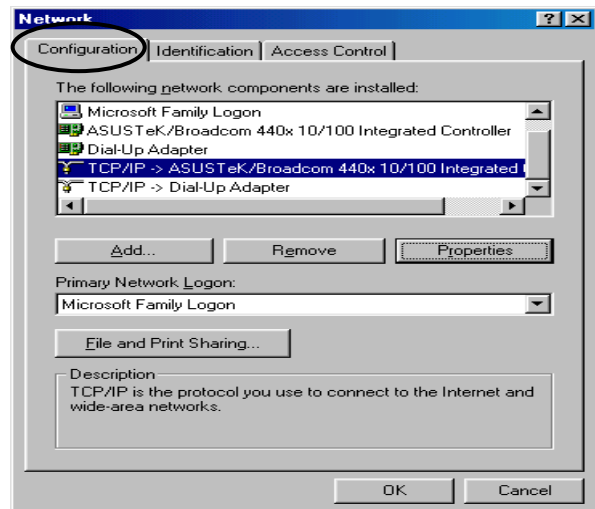
# Configuring PC in Windows 2000

1. Go to **Start / Settings / Control Panel**. In the Control Panel, double-click on **Network and Dial-up Connections**.
2. Double-click **Local Area Connection**.
3. In the **Local Area Connection Status** window click **Properties**.
4. Select **Internet Protocol (TCP/IP)** and click **Properties**.
5. Select the **Obtain an IP address automatically** and the **Obtain DNS server address automatically** radio buttons.
6. Click **OK** to finish the configuration.



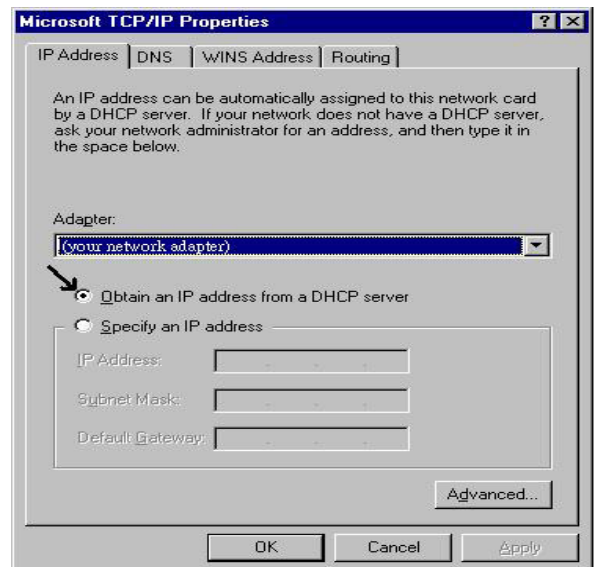
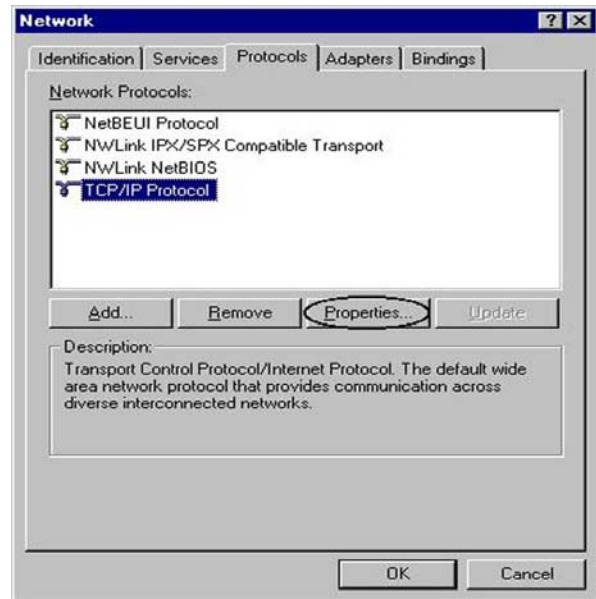
## Configuring PC in Windows 98/Me

1. Go to **Start / Settings / Control Panel**. In the Control Panel, double-click on **Network** and choose the **Configuration** tab.
2. Select **TCP/IP ->**  
**NE2000 Compatible**, or the name of your Network Interface Card (NIC) in your PC.
3. Select the **Obtain an IP address automatically** radio button.
4. Then select the **DNS Configuration** tab.
5. Select the **Disable DNS** radio button and click **OK** to finish the configuration.



## Configuring PC in Windows NT4.0

1. Go to **Start / Settings / Control Panel**. In the Control Panel, double-click on **Network** and choose the **Protocols** tab.
2. Select **TCP/IP Protocol** and click **Properties**.
3. Select the **Obtain an IP address from a DHCP server** radio button and click **OK**.



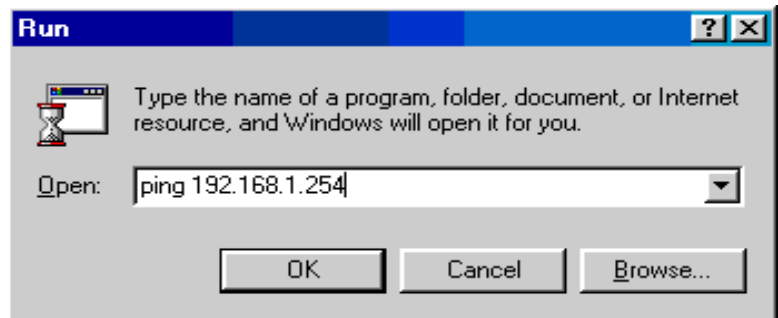
## Configuring Your ADSL Router



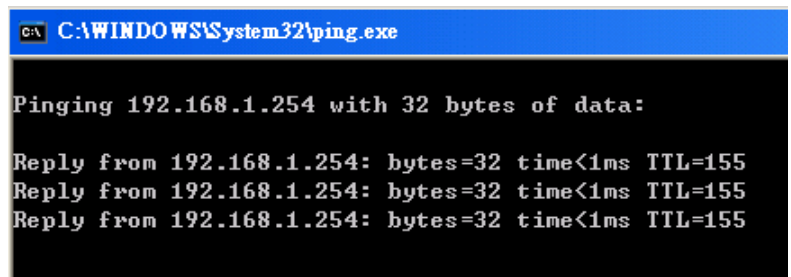
*To configure this device, you must have IE 5.0 / Netscape 4.5 or above installed*

### ■ Verifying Your Local Network Connection with the Device

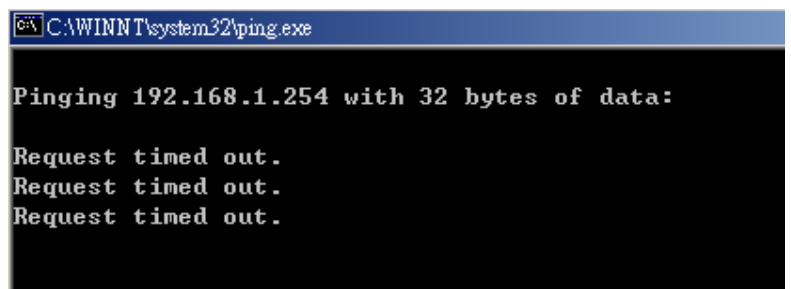
To see if this ADSL Router is visible on the local network, go to **Start / Run**. In the Run dialog box, type “**ping 192.168.1.254**” then press **OK**.



A command prompt window will pop out. If your ping is successful which means your local network is able to reach to the device, then the command prompt window will close up automatically.



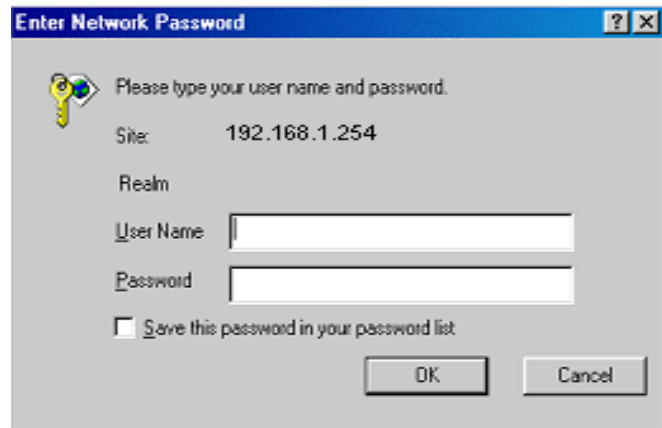
Connection fails, when you see “**Request timed out**” in the command prompt window. You may need to check your set up.



### ■ Connecting to the Router

Open the web browser and type <http://192.168.1.254> in the browser's address box. This number is the default IP address for this router. Press **Enter**.

A user name and password window will appear. **The default User Name and Password are "admin" and "password"**. Press **OK** to logon to the router



Enter Network Password

Please type your user name and password.

Site: 192.168.1.254

Realm

User Name

Password

Save this password in your password list

OK Cancel

## Product Support and Contact Information

Most problems can be solved by referring to the **Troubleshooting** section in the User's Manual. If you cannot resolve the problem with the **Troubleshooting** chapter, please contact the dealer where you purchased this product.

### Contact Billion

#### WORLDWIDE

<http://www.billion.com>

Mac OS is a registered Trademark of Apple Computer, Inc.  
Windows 98, Windows NT, Windows 2000, Windows Me and Windows XP are registered Trademarks of Microsoft Corporation.