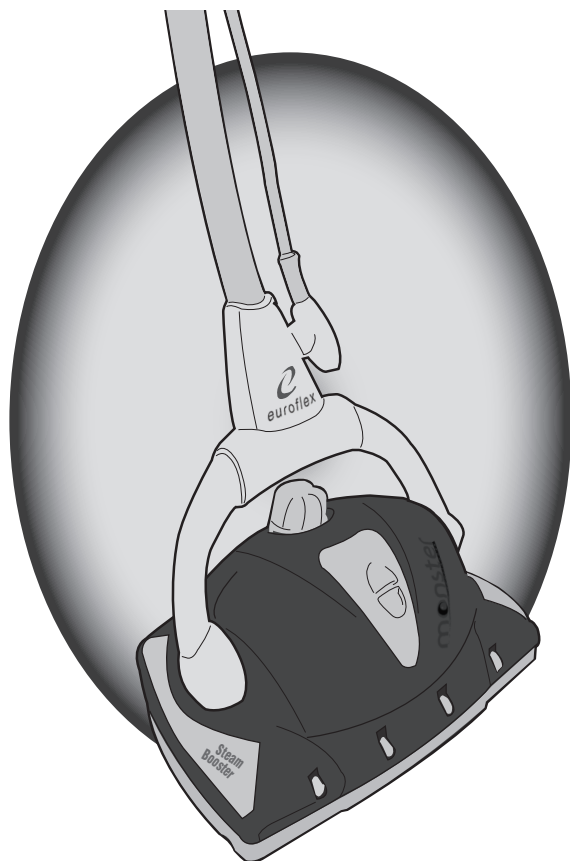


monster®




EZ1 MONSTER FLOOR STEAMER

INSTRUCTION MANUAL

Model #: EZ1 AUS, NZ

SAFETY WARNING

- The manufacturer reserves the right to make changes to the design and features of the appliance without notice.
- This appliance is solely for household use.
- Do not turn the appliance on if the steam mop shows signs of damage, the power cable is damaged or if the appliance has been potentially subject to non-identifiable damage (e.g. the appliance has been dropped, etc.).
- Do not plug in the appliance until you are sure the electrical voltage supply corresponds to the required voltage shown on the machine plate.
- The electric socket should be earthed and equipped with a 10A automatic circuit breaker.
- Any extension cables should be checked to ensure they are rated 10A and suitable for the appliance. Cables should be completely unwound prior to use.
- The appliance should not be used if there are visible signs of damage or leakage.
- The manufacturer declines any responsibility for damage to persons or equipment, in the event that the equipment is damaged as a result of improper use, unauthorized repair or unauthorized maintenance work.
- Repairs should be carried out solely by personnel authorized by the manufacturer. Equipment repaired by personnel who are not authorized to do so, represent a risk and, as such, are not covered by the warranty.
- The power cable should only be replaced by technical support personnel who have been authorized by the manufacturer.
- Do not use the appliance outdoors.
- Do not expose the appliance to external atmospheric agents, dampness or heat.
- Use a dry or slightly damp cloth to clean the appliance.
- Use solely manufacturer-recommended accessories or spare parts.
- The steam released from the appliance is extremely hot. Both appliance and accessory tools may scald. Avoid direct contact. The steam symbol  (symbol 5597 relative to IEC 60417-1) warns operators that there is the risk of scalding!
- This appliance is not suitable for children, the physically or mentally disabled, or persons without the necessary experience and know-how to handle the machine, unless they have been adequately trained by safety personnel.
- Keep out of the reach of children.
- Keep the appliance in a safe dry place out of the reach of children when not in use.
- Do not pull on the cable. Do not use the cable to move the appliance. Do not exert undue pressure on the cable (i.e. when closing a door). Avoid any contact with sharp edges and corners. Keep the cable away from hot surfaces.
- No parts connected to an electrical power supply (switch, plug, electronic components, etc.) should be in contact with water.
- Disconnect the appliance from the power supply prior to any maintenance or cleaning operations. Allow the steam mop to cool down.
- Do not leave the equipment unguarded. Remove the power supply in the event the machine remains unattended for a period of time.
- Fill Boiler with water that is free of additives, perfumes, or any other chemical substances.
- Do not overturn or lean the appliance unduly to one side.
- Do not point the jet of steam in the direction of people, animals, plants, electrical or household appliances.
- Do not insert any objects in the various openings and do not use the appliance if any opening is obstructed.
- Do not use the appliance with wet hands or bare feet.
- Do not use the appliance when close to flammable or explosive substances.

TY INSTRUCTIONS

Please contact your closest technical support centre should you require further information or instructions not contained in this document.

Customer Support Centre:

Australia: 1800 663 866

New Zealand: 0800 666 783

Dispose of plastic packaging appropriately, as it may represent a potential hazard for children!

IMPORTANT: Before operating the unit for the first time, read these instructions carefully and keep them for future reference.

Euroflex relieves itself of any liability for damages that shall be the result of improper use of the appliance, not in conformity with what's written in this instruction manual.

WARNING: This appliance must be earthed.

The appliance must be connected to a 220-240 volt 50/60Hz AC supply by means of a three pin socket, suitably earthed.

CAUTIONS

- *Do not use your Floor Steamer without a Hard Surface Pad or Carpet Glide & Pad attached to the system.*
- *Never leave your Floor Steamer in one spot on any surface for any period of time. Always place on the Parking Pad and make sure that the Floor Steamer Handle Assembly is in the full "UP POSITION" when not in use - this turns the Steamer Off.*

IMPORTANT

Please read all of the instructions for use and Important Safety Instructions carefully. Remove and discard all packaging materials and keep them out of the reach of children.

● Save your back

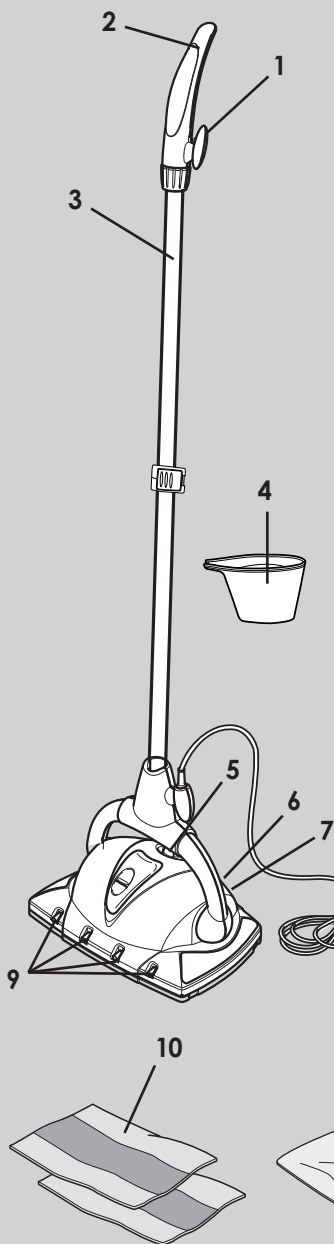
No need to press hard

The steamer does the work for you



SAVE THESE INSTRUCTIONS

One (1) Floor Steamer



- 1 - Cord Winder
- 2 - Handle
- 3 - Metal Extension Tube
- 4 - Measuring Cup (pre-marked)
- 5 - Boiler Cap
- 6 - Steam Ready Indicator Light (green)
- 7 - Power Indicator Light (orange)
- 8 - Power Cord
- 9 - Steam Nozzles
- 10 - Hard Surface Floor Pad
- 11 - Carpet Floor Pad
- 12 - Carpet Glide
- 13 - Parking Pad

Technical Data

Adapter Input: 220-240V~, 50/60Hz

Cord Length: 7 meters/23 feet

Power: 1200 watts

Boiler: Stainless Steel

Boiler Capacity: 0.6 liter/20 ounces

1 Assembly of Parts & Preparation of Steamer

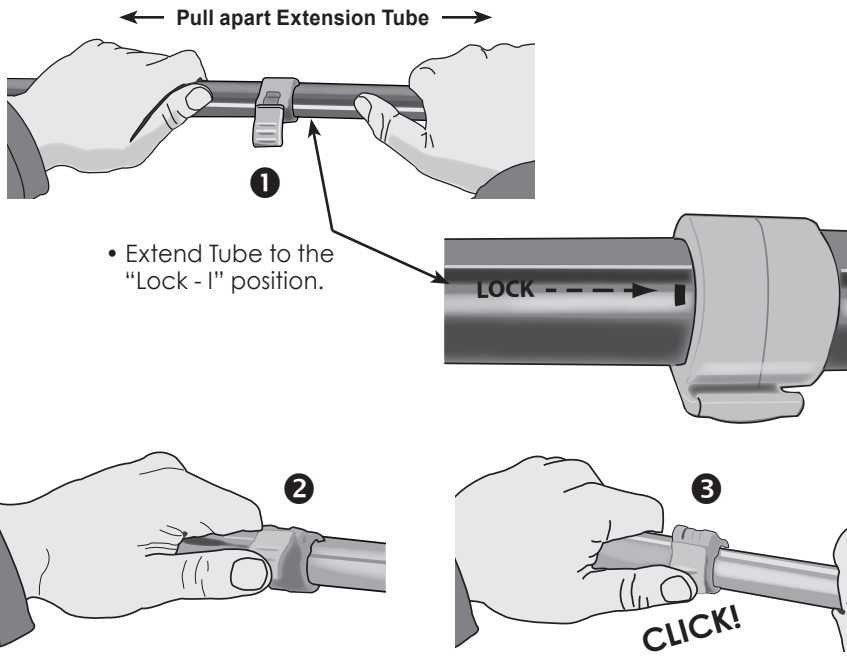
Make sure all parts are in the box (see pg 4).

IMPORTANT: FOLLOW THESE INSTRUCTIONS CAREFULLY!

A. Assemble Handle

After removing Handle Assembly from carton:

- Pull Extension Tube apart (shown below).



- Snap connector down. When a "click" is heard, the Tube is locked in position.



IMPORTANT

Frontal steam can only be generated when Extension Tube is in the "Maximum Extension" position. **BE SURE EXTENSION TUBE IS FULLY EXTENDED AND LOCKED IN PLACE FOR OPTIMAL STEAM OPERATION.**

B. Attach Handle to Steamer

- Before starting, remove the self-tapping screw from the bottom of Extension Tube.
- Insert the Handle Assembly into the Floor Steamer Base. Align Arrow on Handle with Arrow on Base (as shown in Fig. A).
- Once inserted, twist Handle Assembly 90° clockwise (as shown in Fig. B). Be sure Arrow on the Handle is aligned with Line/Lock Icon on Base.

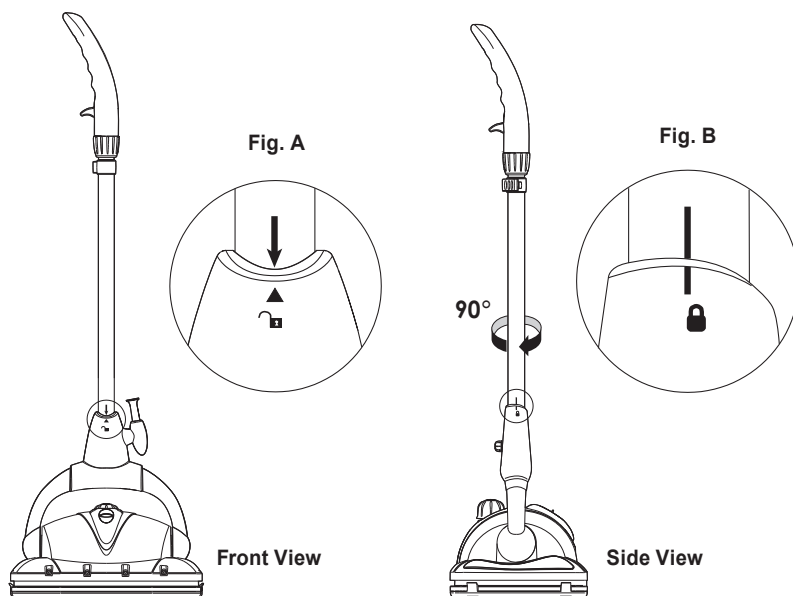
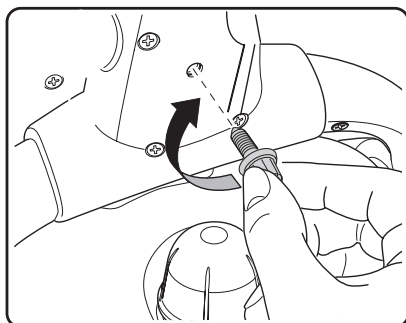


Fig. C



- Align the Handle Assembly screw hole with the opening in the steamer housing.

Secure the handle assembly with self-tapping screw which was removed from bottom of Extension Tube (as shown in Fig. C).

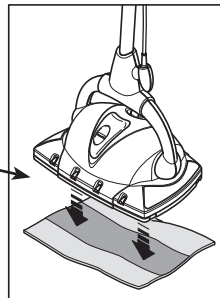
C. Attach Hard Surface Floor or Carpet Pad to Steamer

Affix either the Hard Surface Floor Pad or Carpet Glide with Carpet Pad to your Floor Steamer.

WARNING: To prevent floor damage, ALWAYS attach either the HARD SURFACE FLOOR PAD or the CARPET GLIDE ACCESSORY with CARPET PAD when using your Floor Steamer. NEVER use without either of these attachments affixed to the machine.

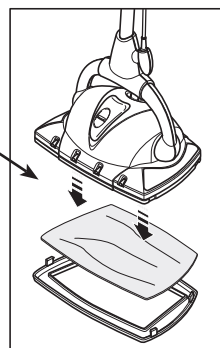
ATTACHING HARD SURFACE FLOOR PAD

Place Floor Pad face down on the floor, with white hook and loop strips facing up. Hold Floor Steamer about 2" above Pad and gently place Floor Steamer onto the Pad. Firmly press down to assure Pad is securely adhered to the Floor Steamer.



ATTACHING CARPET GLIDE WITH CARPET PAD

Place Carpet Glide face up on floor. Center and place Carpet Pad on top of Carpet Glide. Hold Floor Steamer over Carpet Glide and gently lower the Steamer onto the Glide. Make sure the 4 clips on Glide are around the outside of the Steamer Base and using hands, attach the 4 clips of the Carpet Glide to the Steamer Base.



USE ON HARDWOOD FLOORS

For hardwood floors, use only on "sealed" hardwood surfaces. Move Steamer forward and backward while cleaning, carefully observing the amount of steam used, as too much water could cause damage.

IMPORTANT NOTE ABOUT LINOLEUM FLOORING

Steam can cause wax to be stripped from, and consequently damage, some varieties of linoleum flooring. ALWAYS test a small, inconspicuous portion of the floor BEFORE using steam to ensure that your linoleum floor does not have this issue.

NOTE: See "Maintenance & Cleaning" for care and cleaning instructions for Microfiber Pads.

D. Filling Boiler with Water

WARNINGS:

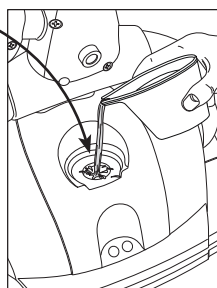
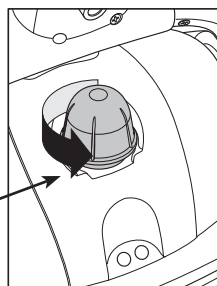
- Carefully read all instructions before removing Boiler Cap.
- Always unplug appliance before filling the Boiler.

IMPORTANT

Use tap water – distilled or demineralized water is recommended if tap water is too hard. DO NOT add detergents, perfumes, oils or other chemical substances.

Follow these instructions to avoid overfilling the Boiler.

- Be sure appliance is unplugged, and has cooled for at least 5 minutes before filling with water.
- **Make sure Handle Assembly is in the upright "Off" position.** Remove Boiler Cap by pressing it down and turning it counterclockwise.
- Pour in a maximum of 0.6 l / 20 oz. water using the provided measuring cup. Make sure that **water does not overflow.** Replace Boiler Cap by pressing it down and turning it clockwise. If using cold water, heating time is about 3-5 minutes. If using warm water, heating time is reduced.



IMPORTANT

- Do not overfill the Boiler as excess water will be flushed out of the Boiler before dry steam will emit.
- If re-filling the Boiler while Steamer has been in use, be sure to allow Steamer to cool for at least 5 minutes and loosen Boiler Cap slowly to allow any excess steam to escape before completely removing Cap. (See step 2D, "Refilling Boiler During Use" for detailed instructions.)

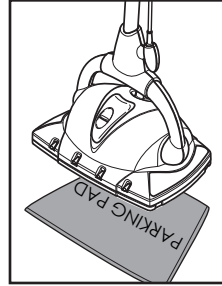
2 Using Your Floor Steamer

A. Using the Parking Pad

You can use the Parking Pad if the Steamer is warm or hot.

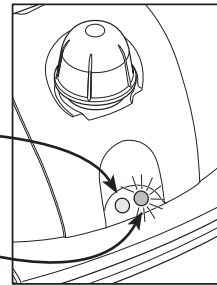
CAUTION

The Parking Pad is provided to prevent floor damage that can result from leaving a hot steamer resting on the same spot for too long. ALWAYS place Floor Steamer on the Parking Pad when not in use, or while it is cooling before storage.



B. Starting the Appliance

- Be sure Boiler is filled with water and Boiler Cap is securely in place.
- Insert the plug into a 3-prong grounded electrical outlet (orange Power Indicator Light will illuminate).
- **Keeping the handle in the upright "Off" position**, wait until the (green) Steam Ready Indicator Light illuminates.

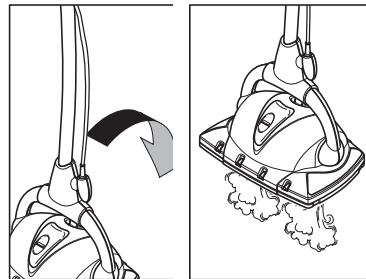


Once Boiler is filled and the green Steam Ready Indicator Light glows, the Monster is ready to clean.

C. Using Steam

- To emit steam from the underside of the Steamer, simply pull the Handle downwards.
- Return Handle to upright position to stop steam.

You will find that your Floor Steamer can easily clean and refresh most hard surfaces and floors using the steam from the underside alone.



NOTE: Some water may be emitted when the handle is first pulled down after filling. This is normal.

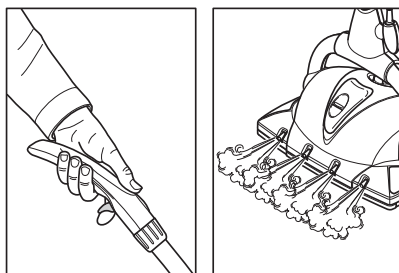
Continued on next page

C. Using Steam *(continued)*

- To emit steam from the Steam Nozzles, push the trigger on the Handle.

IMPORTANT

The Steam Nozzles are meant to be used in steam “bursts” and should never be used on a sustained basis. The Steam Nozzles will loosen especially difficult debris and will assist in cleaning hard to reach areas such as floor edges.



NOTE: Your Steamer will not need the Boiler to be refilled for up to 20-25 minutes.

The Floor Steamer will stop producing steam when the Boiler is empty. When this happens unplug and store unit or refill with water per instructions (1D).

NOTE: If the Floor or Carpet Pad become too wet or too dirty, replace with a clean, dry Pad and continue cleaning.

D. Refilling Boiler During Use

WARNING: Let Steamer cool 5 minutes before opening Boiler Cap. Use care when opening the Boiler Cap – it may still be hot and steam may escape, causing burns. If Boiler is still hot, water may spurt out during refilling – this can also cause burns.

- Unplug appliance.
- Press trigger on the Handle to clear steam from Steam Nozzles.
- Press down and slowly turn Boiler Cap counterclockwise. This will allow remaining steam to escape.
- **Be sure Steamer has cooled 5 minutes before refilling with water.**
- Fill Boiler using Measuring Cup provided. *Be sure Steamer Handle remains in the upright “Off” position.* Fill only 0.6 litres. Do not overfill the Boiler as excess water will be flushed out of the Boiler before dry steam will emit.
- Firmly push down and screw Boiler Cap back on by turning it clockwise.
- Insert plug into 3-prong electrical outlet.

REMINDERS

- Always use tap water.
- If tap water is too hard, use distilled or demineralized water to avoid the risk of mineral deposits or sediment from forming.
- Do not add detergents, perfumes, oils or other chemical substances.

3 Cleaning and Rinsing Floor Steamer

If distilled or demineralized water is regularly used there is no need to clean the Boiler.

Rinsing the Boiler

We recommend you periodically rinse the Floor Steamer to prevent the accumulation of calcium and sediment caused by hard water use. After 10 - 15 refills, fill the Boiler 3/4 full with hot tap water, shake several times and empty out into sink or bathtub. Wipe the Steamer base with a damp cloth and wipe dry.

NEVER HOLD THE STEAMER UNDER TAP TO FILL. Use Measuring Cup provided to fill.

Cleaning the Boiler

If you use tap water, we recommend cleaning the Boiler every 3-4 months (depending on mineral buildup). Use a Hard Water Mineral Cleaner/Remover (found in most hardware or small appliance stores).

- Remove Boiler Cap and empty water from Boiler into a sink.
- Follow manufacturer's instructions on cleaner package, and fill tank with specified amount of cleaner.
- Empty cleaner from Boiler and fill with water. Rinse thoroughly and empty from Boiler. Repeat until water in tank comes out clear.
- Replace Boiler Cap and store appliance properly.

Cleaning of Boiler and Steamer is the sole responsibility of appliance owner. Calcium, mineral deposits or sediment left to build up in the Floor Steamer causing it to fail is not covered by the product warranty.

Before first use after cleaning the Boiler, hold Steamer so it is facing downward and direct steam into a sink or standing shower to clear any leftover residue from Boiler. When clean drops of water appear, wipe clean with soft cloth. Your Steamer is ready for use.

Microfiber Pad Care & Cleaning

Your Microfiber Pads are designed for hundreds of uses. Clean Pads regularly, either by hand (using mild soap and warm water) or in your clothes washer on a delicate cycle, cool water. Never use fabric softener or bleach. We recommend letting Pads air dry to maintain maximum long term effectiveness.

Microfiber washing instructions – ULTRA MICROFIBRE

90% Polyester / 10% Polyamide
Hand wash only
Tumble dry low or air dry
No bleach / No fabric softener

80% Polyester / 20% Polyamide
Hand wash only
Tumble dry low or air dry
No bleach / No fabric softener

Issues	Possible Causes	Solutions
Steam is not coming out of the Steam Nozzles.	Improper Handle assembly.	Call Customer Service to receive instructions to correct the problem.
The Hard Surface Floor Pad is not adhering to Steamer.	Not enough pressure was applied when attaching Pad.	Position Steamer about 2" above Pad and FIRMLY press it down onto the Pad.
The Cleaning Pads are getting soaked (too wet). Why?	Boiler is overfilled.	Let Steamer run until excess water ceases. -OR- Remove some water from Boiler.
	Green "Steam Ready Indicator Light" is not illuminated.	Wait for green "Steam Ready Indicator Light" to illuminate.
The steam seems to be making my floor too wet.	Steam Nozzles are being used too frequently.	Only use Steam Nozzles in short bursts for cleaning tougher stains or to clean hard to reach areas.
	The Cleaning Pad is too wet (saturated with moisture)	Replace the wet Pad with a dry, clean Pad and continue cleaning.

IMPORTANT QUESTION:

Q: Do I always need to use a Microfiber Pad when cleaning with my Steamer?

A. YES! It is critically important to ALWAYS use your Microfiber Pads. The Floor Steamer should NEVER be used without either a Hard Surface Floor Pad or Carpet Glide with Carpet Pad.

EUROFLEX AUSTRALIA PTY LTD

P.O. Box 1395
Wangara WA 6947
Australia

Customer Support Line:

1800 663 866
euroflex.com.au

EUROFLEX NEW ZEALAND LTD

P.O. Box 305 650
Triton Plaza, North Shore 0757
New Zealand

Customer Support Line:

0800 666 783
euroflex.com.au



euroflex®

EUROFLEX srl

Via dei Colli, 153 • 31058 Susegana (TV) Italy • tel. ++39.0438.661711 • fax. ++39.0438.661712

http: www.euroflex.tv0 • E-MAIL: euroflex@euroflex.tv