

Instruction Manual



Thank you for selecting our Euroair Energie – Photocatalytic Air Purifier.
Please read the instruction manual carefully and keep it for future reference.

Important Safeguards

READ ALL INSTRUCTIONS BEFORE USING THIS APPLIANCE.

Warning: If the supply cord is damaged, it must be replaced by the manufacturer, service agent or similar qualified person in order to avoid a hazard.

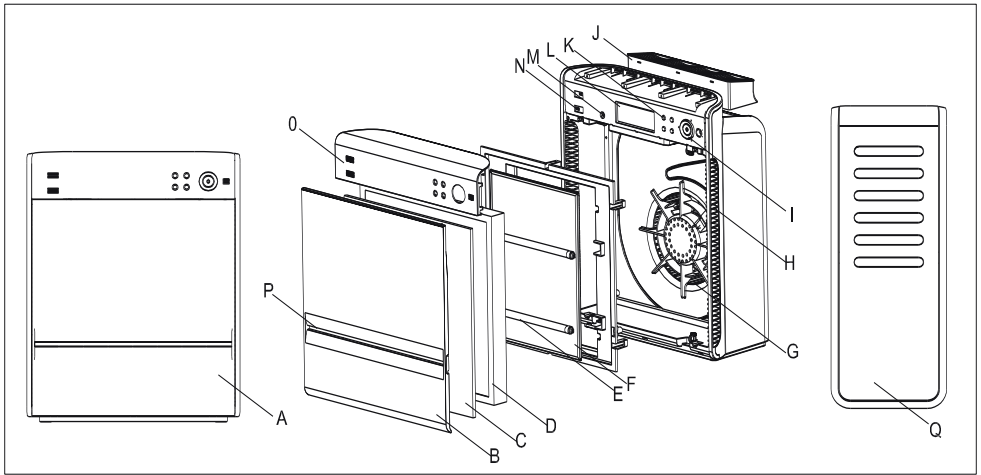
To reduce the risk of electric shock:

- Use indoors only
- Plug in the right power source described on the label
- Keep the air purifier out of reach of children or invalids to prevent from injury
- Use of an extension cord is not recommended as it may cause a short circuit or destroy the unit or may cause personal injury
- Turn off all controls before unplugging. Always disconnect cord from electrical outlet before servicing the air purifier
- Do not unplug by pulling on cord. To unplug, grasp the plug, not the cord
- Never handle plug or air purifier with wet hands
- Do not pull or carry by cord, use cord as a handle, close door on cord or pull cord around sharp edges or corners. Keep cord away from heated surfaces
- Do not use with damaged cord or plug
- Do not operate the air purifier near a shower, bathtub or in the place where steam may be present. It may cause a short circuit or influence the performance of cleaning
- Do not immerse the air purifier in water or any other liquid. This should destroy the unit
- Do not operate the air purifier near a stove or heater
- Do not operate the air purifier where flammable gases such as oxygen, natural gas or propane may be present
- Do not put any object into the cover openings

Save these instructions!

Air Purifier Description

Main Structure



- A. Front view
- B. Front cover
- C. Pre-filter
- D. Compound Filter (HEPA+Activated Carbon)
- E. UV Tubes (×2)
- F. Nano-photocatalytic Filter
- G. Fan
- H. Side Air Flow Inlet
- I. Power Control
- J. Air Flow Outlet
- K. Function Buttons
- L. Display
- M. Remote Control Signal Receiver
- N. Dust Sensor
- O. Front Panel
- P. Gas Sensor
- Q. Front Air Flow Inlet

Purifying Process and Main Features

- **Pre-filter**

It filtrates larger particles to prolong the lifespan of the HEPA filter.

- **Compound Filter**

It consists of two layers of filters, one is the true HEPA Filter and the other is the Activated Carbon Filter. The former filtrates particulates as small as 0.3 micron, like pollen, smoke, pet dander, mould, airborne dust, etc. The latter is designed to treat odours.

- **UV Tubes**

Their UVC germicidal irradiation can destroy airborne bacteria and viruses.

- **Nano-photocatalytic Filter:**

This filter decomposes thoroughly, the toxic gases and viruses from the air 300 times more effectively than standard carbon filters. It also has the ability to regenerate and clean itself with minimal attention.

- **Anion Generator**

This feature aims to generate a great deal of negative ions to keep the air fresh always.

- **Dust Sensor & Gas Sensor**

They detect air quality and show air quality level on display. In Auto Mode, the unit automatically adjusts its fan speed accordingly, to deal with the contaminant quickly.

- **Mounting your Air Purifier**

In order to get greater efficiency in cleaning, it is recommended to place the purifier on the ground or on a holder about 50cm high and at convection position against the air conditioner or other similar appliances.

Function Description

● Standby

Under Standby Mode, no letters or icons will be shown on the display. The Standby Indicator illuminates in red to show the apparatus has been connected with power.

● Purify Air

UV Tubes work with the Nano-photocatalytic Filter in this mode.

● Refresh

Anions are generated under this mode.

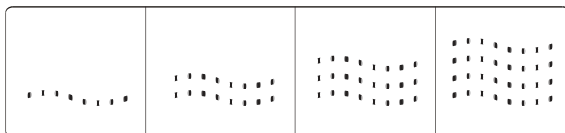
● Fan Speed

There are five different fan speeds. Turbo is the highest speed while Silent - the lowest makes the unit work in whispering silence.

● Air quality indicator

There are four levels of air quality as indicated below:

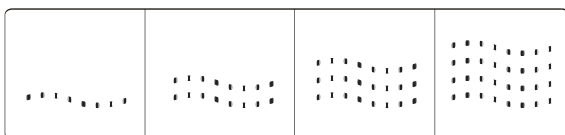
Very good Good Ordinary Poor



● Auto

This mode automatically determines the working condition according to the air quality detected by the Dust Sensor and Gas Sensor. Ion generator and UV Tubes work together in this mode. Below is the relative fan speed for each level of air quality.

Very good Good Ordinary Poor



Silent Middle Strong Turbo

● Check Filter

When the purifier has worked for 3000 hours cumulative, the maintenance indicator illuminates to remind the user to change the Pre-filter and Activated Carbon Filter. Meanwhile check the HEPA Filter with the colour shade on the frame to see whether it is necessary to replace it.

After maintenance, press 'Fan Speed' and 'Refresh' buttons simultaneously for 3 seconds to reset the counter. Please note that whenever the 'Fan Speed' and 'Refresh' buttons are pressed simultaneously, the counter will be reset.

If you do not reset the counter after checking the filter, or forget to check the filter after 3000 hours, 'Check Filter' will blink after 3500 hours to remind the you again.

- **UV Status Indicator**

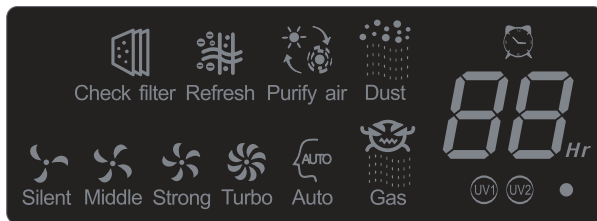
When 'UV1' or 'UV2' icons illuminate, it means the relative UV tube is not working and needs replacing.

How to Use Buttons and Display

- **Buttons**

ON / OFF, Speed, Timer, Purify Air, Refresh

- **LED Display**



Remote Control

- **Buttons Description**

1. ON/OFF: Turns on or turns off the apparatus
2. Fan Speed: Adjusts the fan speed
3. Refresh: Starts or stops the working of the Ion Generator
4. Timer: Sets Automatic Off Time at 1 / 2 / 3 / 4 / 5 / 6 / 7 / 8 / 9 / 10 / 11 / 12 hours
5. Auto: Starts or calls off the Auto Mode
6. Purify Air: Shifts to Photocatalytic Purification

- **Batteries Assembly**

1. Press the Interlock and remove the battery cabinet cover.
2. Correctly put in batteries according to the '+', '-' icons inside.

Operation Guide

● ON/OFF

Connected with power, the unit beeps with all the display icons illuminating together and enters Standby Mode after 1 second.

Press the ON / OFF button, the unit starts running at Strong speed. 'Refresh' and 'Purify Air', do not function together until 3 minutes later when the unit shifts to Auto Mode, under which the Ionizer and UV tubes work together.

Any time the unit gets restarted, it remembers its last working status.

● Fan Speed

It controls Fan Speed and Auto Function.

Based on the initial Strong speed, the Fan Speed Cycles in the following order: Strong ---Turbo --- Auto (according to air quality) ---Silent --- Middle

There are indicators in different colours for each Fan Speed. For Silent, it's green. For Middle it's blue. For Strong it's orange and for Turbo it's red.

● Refresh

Press this button and the Ionizer starts generating Anions. Press this button again and the Ionizer stops working.

● Timer

Each press of this button increases 1 hour to the counter until it accumulates to 12 hours, after which point the counter will be called off. When this button is kept pressed down, the programmed time increases rapidly.

● Purify Air

It controls photocatalytic purification.

Maintenance

Cover and Housing

- Do remember to cut off the power supply before maintenance
- Clean the unit only when necessary. If the unit is used in a dirty environment, it may need more frequent cleaning
- Wipe the dirt with soft fibres
- For obstinate dirt, only a neutral detergent is recommended

Caution: Never expose (the Housing) to hard and speculate objects to avoid nicks. Carefully remove the front cover or the parts may get damaged.

Sensors

- Clean out the dust blocking the sensors' air inlet
- Clean out the dust in an aperture or a limited space with the vacuum cleaner
- Wipe the sensors' lens with a cotton bar. Do remember never wipe the lens with organic solvent for the lens is coated with protective membrane

Filters

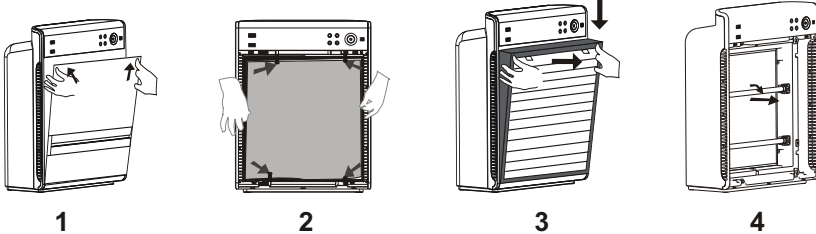
The Filters should be cleaned or replaced regularly.

Pre-filter: It is as washable as normal fabric but DO NOT wring it. Let it dry flat. It is recommended to wash this filter every 3 months and replace it after 1 year.

Compound Filter: It is recommended to clean the dust gathered on this filter with a vacuum cleaner every 3 months. It needs to be replaced when the purification efficiency is greatly reduced. Generally speaking, its lifespan is 1-12 years.

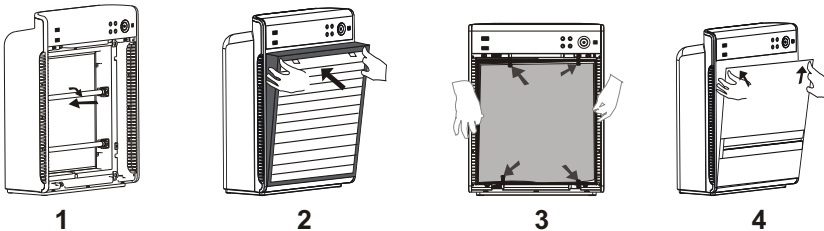
• Disassembly

1. Front cover: Press the cover inwards at the top two corners to loosen the interlock switch. Then, pull the whole cover upwards to take it off.
2. Pre-filter: Turn the locks in the arrows' direction to release the Pre-filter.
3. Compound Filter: Hold the small ribbon and pull the filter out.
4. UV Tubes: Turn the lamp clockwise or anti-clockwise until the Tube is parallel to the Aclinic openings. Take the Tube out from the tube-holder levelly.



• Assembly

1. UV Tubes: Place the Tube into the tube-holder from the aclinik openings. Turn the lamp clockwise or anti-clockwise to secure it.
2. Compound Filter: Put the filter in place from the bottom and then push it into the cabinet. HEPA Filter should face outside.
3. Pre-filter: Place in the Pre-filter and turn the locks in the arrows' direction to secure it.
4. Front Cover: Secure the interlock at the bottom first and push the whole cover inwards at the two top corners to secure it.



Please contact to the distributor or agent for purchasing filters.

Technical Specification

Rated Power	120 W
Input Voltage	220-240 V 50 / 60 Hz
Ionizer	> 3.0 million / cc
Max. Airflow	500 m ³ / hour
Product Weight	8.5 kg
Dimensions (W x D x H in mm)	441 x 209 x 559

Advanced Features



HEPA FILTER - It removes dust up to 0.3 micron, smoke, harmful gases and odour from the air with its powerful 7 - stage purification. It is very effective and can trap RSPM and protect you from 99.97% air borne particles.



LOW NOISE - It works at lower noise levels than other air purifiers, so you can have a good night's sleep. In offices, it won't intrude on the work environment.



5-SPEED - With the convenient 5-speed control - Turbo, Strong, Middle, Silent, Auto – you can switch speeds depending on your room space and pollution to ensure optimum freshness.



UV LAMP / HEPA REPLACEMENT INDICATOR - Keep your mind worry-free as it indicates when the UV lamp needs to be replaced.



TIMER - Automatic On / Off for 1 - 12 hours gives you the flexibility to programme your Euroair Energie as per your requirements.



UV LAMPS - Double UV lamps for extra protection.



DUST, SMOKE AND GAS SENSORS - They detect the air quality and show the air quality level on the display .In Auto Mode ,the unit automatically adjusts its fan speed accordingly to deal with the contaminant quickly .



LED DISPLAY - It displays information about air purity levels ,dust levels , usage hours , speed controls , etc . to help keep your Euroair Energie functioning effectively always .



CONTROL - It comes with an easy-to-use Remote Control.



SAFETY - It cares for your safety enabling Automatic Power-Off when the front cover is opened.



ANTI POLLEN - It filters out microscopic pollen particles that cause severe allergies to ensure the air you breathe is safe .



NANO-PHOTOCATALYTIC FILTER - It decomposes toxic gases and viruses from the air 3 0 times more effectively than standard carbon filters . It can regenerate and cleans itself with minimal attention .



ANION GENERATOR - It generates negative ions in large quantity to keep the air fresh at all times ,so you feel energised always .



CHECK FILTER - When the purifier has worked for a total of 3 0 0 hours the maintenance indicator illuminates to remind you to change the Pre filter and Activated Carbon filter ,and also check the HEPA Filter .



AIR-QUALITY INDICATOR - It indicates four levels of air quality - Very Good , Good ,Ordinary ,Poor, for your convenience .



VARIABLE MOUNTING AND COVERAGE - Can be used as a table top, wall mounted or as a self-standing model according to your convenience, providing you an extensive coverage area of 1000 sq.ft.

Troubleshooting

Problem	Causes	Solution
The unit does not work.	<ol style="list-style-type: none"> 1. It is not firmly plugged into the electrical outlet. 2. Front cover is not secure. 3. Remote control batteries have run out. 	<ol style="list-style-type: none"> 1. Firmly plug it into the electrical outlet. 2. Secure front cover. 3. Replace batteries.
No air blows out	Some object is blocking the air inlet or air outlet.	Remove the object and contact the distributor or agent.
Expected cleaning effect is not achieved.	<ol style="list-style-type: none"> 1. The unit is placed in a poorly-ventilated environment or blocked by other objects. 2. Filters have gathered too much dust and smoke. 	<ol style="list-style-type: none"> 1. Remove the block. 2. Clean or change the replaceable filters.
Air outlet smells unpleasantly.	<ol style="list-style-type: none"> 1. Too much odour is generated together for instance too many people smoking. 2. Filters have absorbed too much odour and smoke. 	<ol style="list-style-type: none"> 1. Operate the apparatus for a certain period. 2. Clean or change the replaceable filters.
Air quality indicator always shows poor air quality all the time.	Lens inside the Sensors is dirty.	Wipe the lens with a cotton swab.

Caution: In the above-mentioned solutions do not work, please contact the distributor or agent. Never arbitrarily disassemble, repair or restructure the apparatus on your own.



EUREKA FORBES 
Your friend for life 

B1/B2, 701, 7th Floor, Marathon NextGen, Marathon Innova,
Off Ganpatrao Kadam Marg, Lower Parel, Mumbai 400 013, India.
Tel: +91 22 3044 9700, 3044 9888, Fax: +91 22 3044 9701.