 <b>INSTRUCTIONS</b>	<p>This manual contains important warnings and information.  <b>READ AND RETAIN FOR REFERENCE</b></p>
--	---



110/230V, 15/7.5A, ONE CYLINDER, COMPACT OIL–LESS

## Compressor

GRACO Part No. 236–526, Series A

DeVILBISS Part No. CAC–4093

### **WARNING**

 <b>INSTRUCTIONS</b>	<p><b>EQUIPMENT MISUSE HAZARD</b></p> <p>Equipment misuse can cause the equipment to rupture or malfunction and result in serious injury.</p> <ul style="list-style-type: none"> <li>• This equipment is for professional use only.</li> <li>• Read all instruction manuals, tags, and labels before operating the equipment.</li> <li>• Use the equipment only for its intended purpose. If you are not sure, call Graco Technical Assistance at 1–800–543–0339.</li> <li>• Do not expose the system to rain. Always store the system indoors.</li> <li>• Do not alter or modify this equipment.</li> <li>• Check equipment daily. Repair or replace worn or damaged parts immediately.</li> <li>• Do not exceed the maximum working pressure of the lowest rated component in your system. This equipment has a <b>100 psi (7 bar) maximum working pressure at 100 psi (7 bar) maximum incoming air pressure.</b></li> <li>• <b>The system is for use only with water-based simulated acoustic and wall texture materials.</b> Use fluids and solvents compatible with the equipment wetted parts. Refer to the <b>Technical Data</b> section of all equipment manuals. Read the fluid and solvent manufacturer’s warnings.</li> <li>• Never directly inhale compressed air. Compressed air may contain toxic vapors.</li> <li>• Wear appropriate clothing, eye protection, and breathing apparatus for the material sprayed.</li> <li>• To reduce the risk of serious injury, including electric shock and splashing fluid in the eyes, follow the <b>Pressure Relief Procedure</b> on page 2 before checking or repairing the compressor.</li> </ul>
	<p><b>FIRE AND EXPLOSION HAZARD</b></p> <p>Improper grounding, poor ventilation, open flames or sparks can cause a hazardous condition and result in a fire or explosion and serious injury.</p> <ul style="list-style-type: none"> <li>• Locate the sprayer at least 20 ft (6.1 m) away from any explosive vapors, due to arcing parts.</li> <li>• Use a time delay fuse or circuit breaker protected electrical circuit of the specified voltage and amperage. In the U.S. and Canada, the fuse must be marked with a T.</li> <li>• Comply with all applicable local, state, and national fire, electrical, and safety regulations.</li> </ul>

# General Information

## WARNING

To reduce the risk of serious injury, including electric shock and splashing fluid in the eyes, follow the **Pressure Relief Procedure** before checking or repairing the compressor.

### Pressure Relief Procedure

1. Shut off the sprayer.
2. Trigger the gun.
3. Open the gun air valve.
4. Unplug the sprayer.

### Extension cords

Try to use longer air and fluid hoses—up to 100 ft. (15 m) maximum—rather than an extension cord. If an extension cord is used, use a maximum 50 ft (15 m) cord with 3 wires of 12, 10 or 8 gauge (AWG) and a 3-prong grounding plug. Plug into a properly grounded, 3-prong outlet. Do not use an adapter and do not use 14 or 16 AWG cords.

### Lubrication

This compressor needs no lubrication or oiling.

### Air intake filter replacement

Remove and wash both air intake filters every time you flush the system. A dirty filter will not allow the compressor to operate at full capacity. Replace the filters if they are worn.

Never operate the sprayer with the filters removed.

### Motor thermal overload protector

The motor has an automatic reset thermal overload protector. If the motor overheats, the overload protector will shut it off.

## WARNING

To reduce the risk of serious injury due to the sprayer restarting unexpectedly, always manually turn off the sprayer if the motor shuts down.

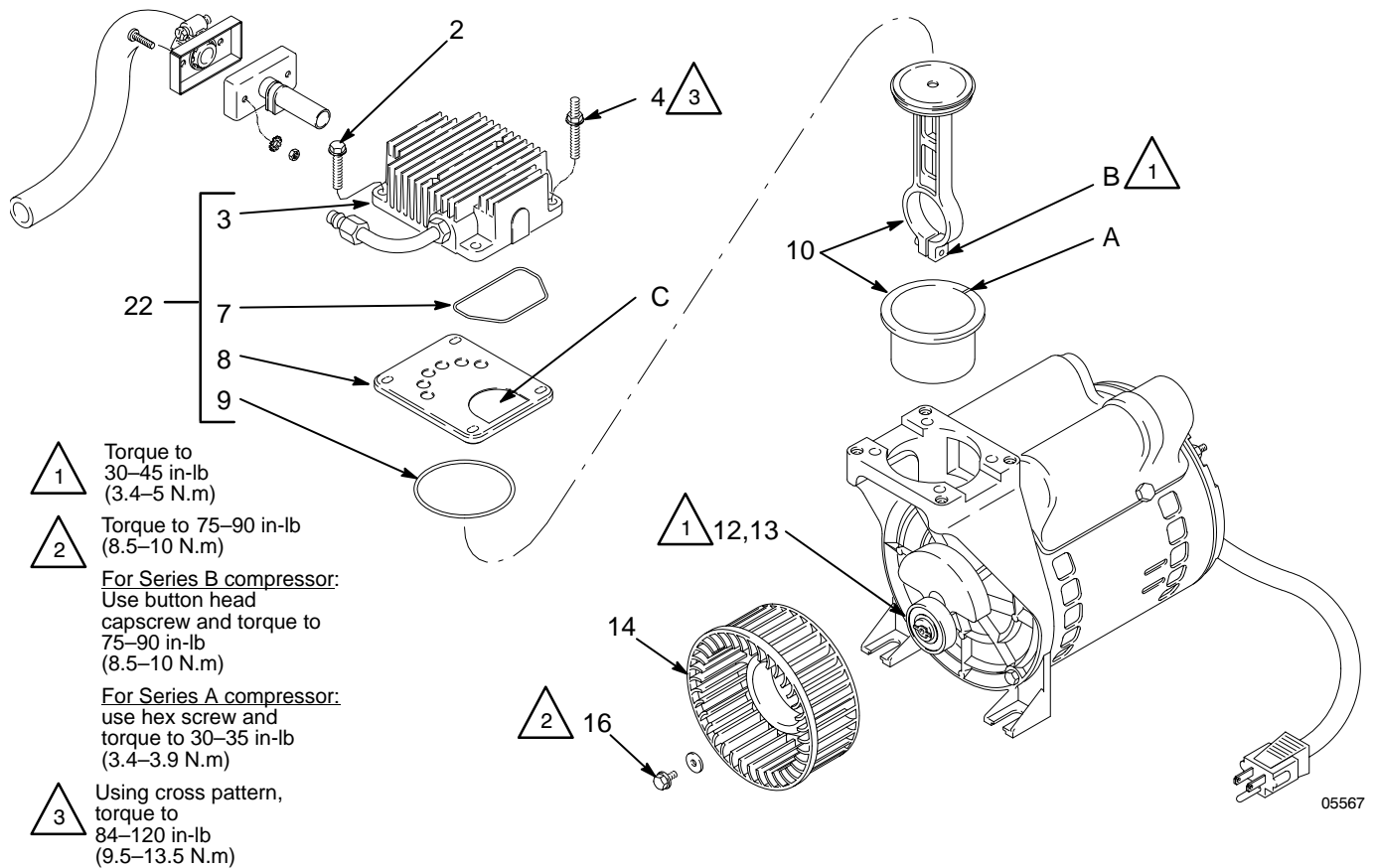
If the overload protector shuts the motor off frequently, check for a voltage problem. Check for low voltage if any of the following conditions exist.

1. Motor does not get up to full power or speed.
2. Fuses blow out when starting the motor.
3. Lights dim and remain dim when the motor is started and running.

# Troubleshooting

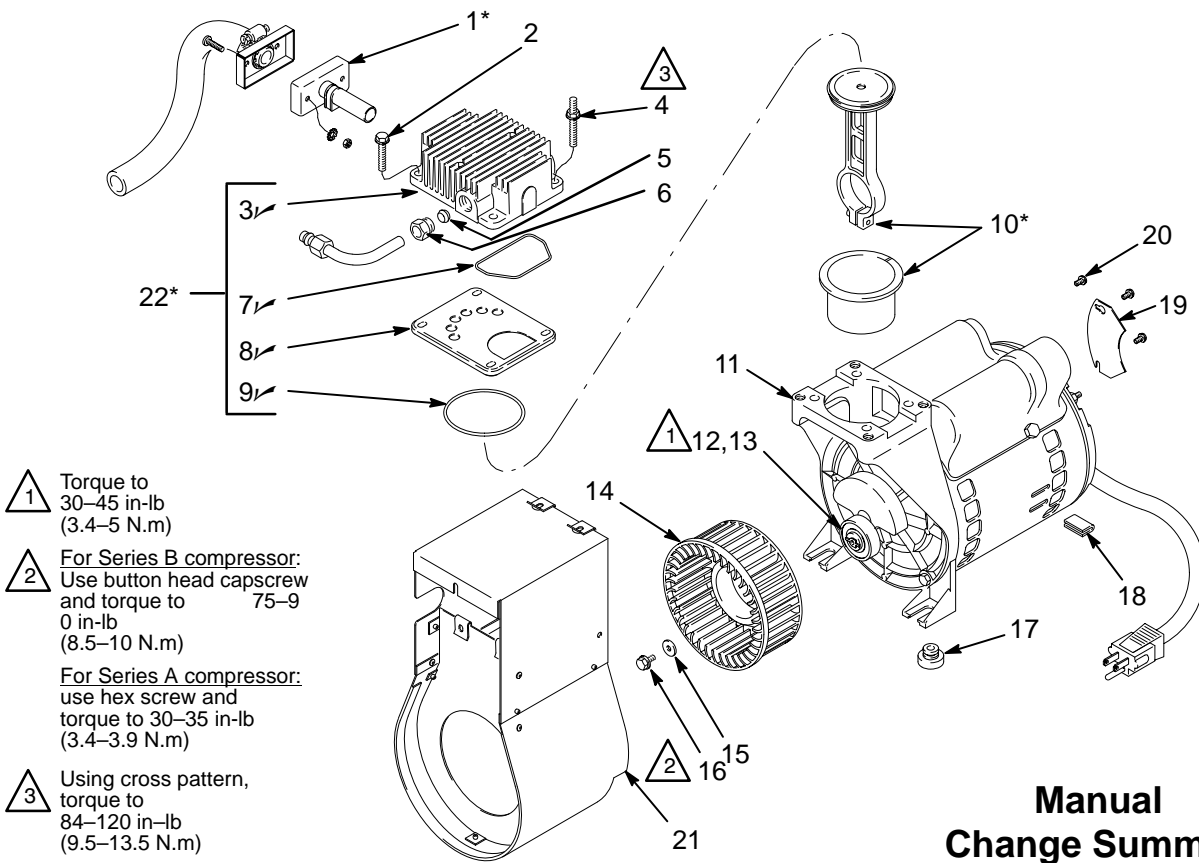
PROBLEM	CAUSE	SOLUTION
Air leaks	Hose fitting is loose	Tighten fitting.
	Restricted air intake filters	Clean or replace the filters.
	Hole in air and/or fluid hoses	Replace the damaged hose.
	Air leaks	Tighten all fittings.
Restricted air intake	Dirty air intake filters	Clean or replace filters. Place sprayer outside spray area.
Motor will not run	Motor thermal overload protector has tripped	SHUT OFF SPRAYER. Allow motor to cool, then restart sprayer. If protector trips often, check for low voltage problem.
	Fuse blow or circuit breaker tripped	<ol style="list-style-type: none"> <li>1. Check and/or replace fuse, or reset circuit breaker. Do not use a fuse or circuit breaker with a higher rating than that specified for your particular branch circuit.</li> <li>2. Check for proper fuse. Use only a Time Delay fuse marked T.</li> <li>3. Check extension cord. See description below.</li> <li>4. Disconnect other appliances from the circuit or operate the sprayer on its own branch circuit.</li> </ol>
	Extension cord is wrong length or gauge	See <b>Extension cords</b> , above.
	Loose electrical connections	Check wiring connection inside terminal box area.
	Faulty motor	Have checked at a local service center. Call 1-800-888-2468 for nearest location.

# Rebuilding the Compressor



1. Remove the fan (14).
2. Disassemble the compressor head (3) as shown. To remove the connecting rod and cylinder (10), loosen its setscrew (B).
3. If you are using the old valve plate (8), scrape the old gasket (7) off of it.
4. Install the cylinder sleeve with its notch (A) toward the rear of the motor. Lower the connecting rod (10) into place so its part number faces out. Position the piston around the bearing (12) and tighten the connecting rod to 120–140 in-lb (13.5–16 N.m).
5. Place the o-ring (9) in the valve plate (8) groove. Install the valve plate, o-ring down, with the discharge valves (B) facing right as shown in the drawing.
6. Install the remaining parts, except the fan (14). Be sure the longer head screws (4) are installed toward the rear of the motor. Always using a cross pattern, hand tighten the screws (2,4), torque lightly, and then torque again to 84–120 in-lb (9.5–13.5 N.m).
7. **Be sure the compressor operates.** Hold on to the motor firmly and plug it in to ensure there is air from the discharge. If not, check the position of the valve plate (8) discharge valves (C).
8. Install the fan (14), matching the keyway to the bearing (12).

# Parts



1 Torque to 30–45 in-lb (3.4–5 N.m)

2 For Series B compressor: Use button head capscrew and torque to 75–90 in-lb (8.5–10 N.m)

For Series A compressor: use hex screw and torque to 30–35 in-lb (3.4–3.9 N.m)

3 Using cross pattern, torque to 84–120 in-lb (9.5–13.5 N.m)

## Manual Change Summary

5568

Ref No.	DeVILBISS Part No.	GRACO Part No.	Description	Qty
1*	CAC-1173-1	111-601	INTAKE MUFFLER	1
2	SSF-990		SCREW, 1/4-20 X 1-1/4	2
3✓	ACG-26		HEAD	1
4	SSF-6640		STUD, 1/4-20 x 1-1/4	2
5	SSP-7821	111-572	COMPRESSION NUT	1
6	CAC-1120	111-573	SLEEVE	1
7✓	ACG-45	113-384	O-RING	1
8✓	ACG-402		VALVE PLATE ASSY.	1
9✓	SSG-8156	111-604	O-RING	1
10*	KK-4835	224-795	CONNECTING ROD ASSY.	1
11	C-MO-3020-1-B		3.5 HP MOTOR	1
12	CAC-4306		ECCENTRIC FLYWHEEL	1
13	SSF-2043		SETSCREW	1
14	CAC-1148-1	224-986	SQUIRREL CAGE FAN KIT	1
		Series B	Includes items 16	1
15	SS-6509-CD	111-591	WASHER	1
16	SSF-3101	111-584	SCREW, #10-24 X 3/8"	1
17	CAC-1098	111-585	COMPRESSOR VIBRATION PAD	2
18	CAC-1099	111-583	MOTOR VIBRATION PAD	1
19	CAC-1415	112-403	COVER PLATE	1
20	SSF-993	111-593	GROUNDING SCREW	1
21		235-959	BLOWER DUCT	1
22*	KK-5040	238-164	VALVE PLATE ASSEMBLY KIT	1

Within Compressor Rebuild Kit 224-989, Head Gasket Kit 224-797 has been replaced by Valve Plate Assembly Kit 238-164.

Also, CAC-112-403-U-1, CAC-1175, and CAC-4281-1 were replaced by ACG-26, ACG-45 and ACG-402, respectively.

## DeVilbiss Warranty

This air compressor is warranted against failure due to defects in material or workmanship for a period of one year from the date of purchase of the sprayer.

\*INCLUDED IN GRACO REBUILD KIT 224-989

✓INCLUDED IN GRACO REPAIR KIT 238-164