

USER MANUAL

DVR

Digital Video Recorder

CONTENTS

Chapter 1: Features.....2

Chapter 2: Layout3

 2.1 Front Panel3

 2.2 Rear Panel3

 2.3 Remote Controller(Only for reference).....4

Chapter 3: DVR Installation4

 3.1 Hard Disk Installation4

 3.2 Camera and Monitor Connection4

 3.3 Power Supply connection.....4

Chapter 4: DVR Boot up5

 4.1 System Initialization.....5

 4.2 Display mode.....5

Chapter 5: DVR Menu6

 5.1 Main Menu6

 5.2 Menu Preview6

 5.3 Setup.....6

 5.3.1 Camera7

 5.3.1.1 Color Setup.....7

 5.3.1.2 Title.....8

 5.3.2 Record8

 5.3.2.1 Set FPS8

 5.3.3 Motion Detection.....9

 5.3.3.1 Sensitivity.....9

 5.3.3.2 Motion Area.....10

 5.3.4 Sensor10

 5.3.5 Schedule10

 5.3.6 Network.....11

 5.3.6.1 External Net Inflection11

 5.3.6.2 DDNS12

 5.3.6.3 E-MAIL.....13

 5.3.7 Backup.....13

 5.3.8 System13

 5.3.8.1 Time Set.....14

 5.3.8.2 System Password14

 5.3.8.3 System Info.....14

 5.3.8.4 Video System.....14

 5.3.8.5 Log View14

 5.3.8.6 Log Set15

 5.3.8.7 Disk Format.....15

 5.3.8.8 Firmware Upgrade.....15

 5.3.8.9 Restore the factory default.....15

 5.3.8.10 Language Select15

 5.4 Display Mode15

 5.5 Search Setup.....15

5.5.1 Time search.....	16
5.5.2 Event Search.....	16
5.5.3 Urgent search.....	16
5.5.4 Record playback.....	16
5.6 Motion Trace.....	16
5.7 Area Zoom in/out.....	17
5.8 PTZ Control.....	17
5.9 Rotation.....	17
5.10 Audio.....	17
5.11 Quit.....	17
Chapter 6: NetViewer Program.....	18
6.1 Installation Procedure.....	18
6.2 Program Main Interface.....	18
6.3 Login- in System.....	19
6.4 Working Mode.....	20
Chapter 7: Specification.....	22
4-CH DVR.....	22
Chapter 8: Appendix.....	23
8.1 System Connection Diagram.....	23
8.2 Accessory (Optional).....	23

Safety Instruction

General safety

1. Use proper power source.

Do not operate this product from a power source that applies more than specified voltage (100-240V AC).

2. Never insert anything metallic into the DVR case.

Putting something into the DVR case can be a source of dangerous electronic shock.

3. Do not operate in wet & dusty or use near water.

Avoid places like a damp basement or dusty hallway.

4. Do not expose this product to rain or use near water.

If this product accidentally gets wet, unplug it and contact an authorized dealer immediately.

5. Keep product surfaces clean and dry.

To clean the outside case of the DVR, use lightly dampened cloth with water (no solvents).

6. Provide proper ventilation.

This DVR has a built in fan that properly ventilates the system.

7. Do not attempt to remove the top cover.

If there are any unusual sounds or smells coming from the DVR, unplug it immediately and contact an authorized dealer or service center.

8. Do not attempt to remove the top cover.

Warning: You may be subjected to severe electrical shock if you remove the cover of the DVR.

9. Handle DVR box carefully.

If you accidentally drop your DVR on any hard surface, it may cause a malfunction. If the DVR doesn't work properly due to physical damage, contact an authorized dealer for repair or exchange.

10. Use standard lithium cell battery. (NOTE: Manufacturer has preinstalled battery.)

The standard lithium cell 3v battery located on the mother board should be replaced if the time clock does not hold its time after the power is turned off. Warning: unplug the DVR before replacing battery or you may be subjected to severe electrical. Properly dispose of old batteries.

11. Install this product under good air circulation conditions.

This DVR system contains a hard disk drive inside, which generates much heat during operation. Therefore, do not block air holes (bottom, upper, sides and back) of the DVR that cool down the system while running. Install or place this product in an area where there is good air circulation.

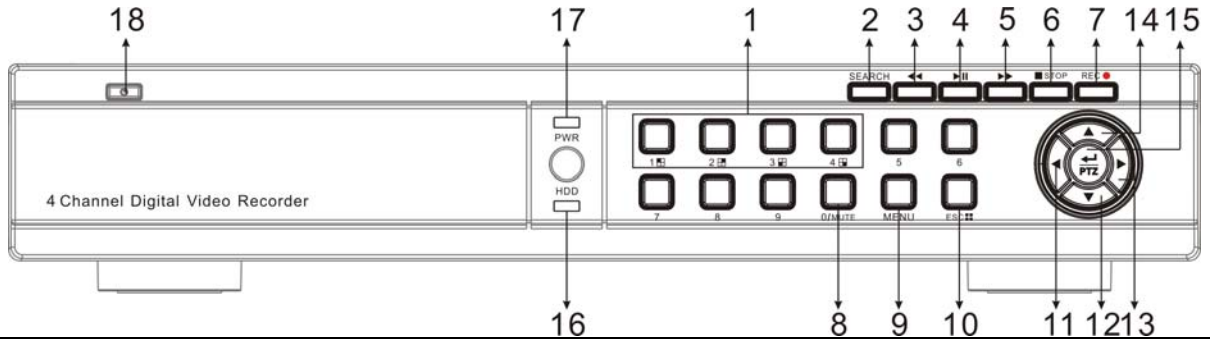
Chapter 1: Features

DVR Features

- H.264 Compression with high compressibility, Fluent web transmission;
- Well Image Quality, High Definition;
- Supports NTSC/PAL system;
- Linux operating system, high stability;
- Supports recording resolutions of CIF , HD1;
- Image quality adjustable;
- On motion detection mode, 8 levels sensitivity adjustable;
- 4- CH Sensor input, 1-CH Buzzer Output, and 1-CH Alarm output;
- Supports Multiple record modes: Manual, Continuous, Motion detection, Sensor triggered and scheduled recording;
 - When motion detected or sensor triggered, system will send out alarm email to designated email address;
 - 4-CH VIDEO binding with audio channel, and synchronously record video when turning-on audio;
- Supports recording list search and advanced time search;
- Supports live output and dwell time (Sequential Channel Switch) Display;
- Supports Video Loss Alarm;
- Supports PTZ camera operations through built-in RS-485 port;
- Supports Password protection Function;
- Supports mouse operation;
- With IR Remote Control;
- Supports SATA HDD;
- Supports USB 2.0 for backup or upgrade;
- Supports Zoom in/out function in a special area;
- Support remote monitor and playback.
- Support DDNS dynamic host;
- Support remotely video / audio transmission and modification of DVR parameter.

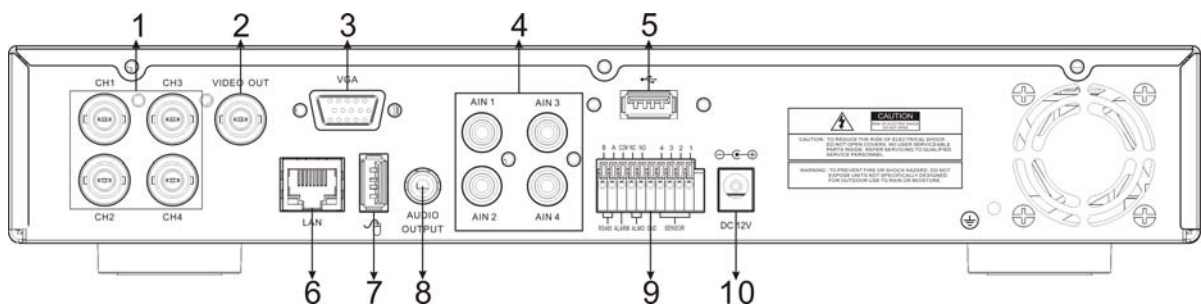
Chapter 2: Layout

2.1 Front Panel



1	1-4: Numeric keys1-4/Channel Select	10	ESC:Esc/Display all
2	SEARCH: Search key	11	◀:Left
3	◀◀: Rewind	12	▼:Down
4	▶▶: Play/Pause	13	▶: Right
5	▶▶▶: Fast Forward	14	▲: UP
6	■STOP: Stop key	15	⬇ PTZ:PTZ control/Enter
7	REC●: Manual Record	16	HDD indicator
8	0/MUTE: Numeric Keys 0/MUTE	17	Power indicator
9	MENU: Menu key	18	Power Switch

2.2 Rear Panel



1	Video input	6	LAN Port
2	Video Output	7	Mouse Port
3	VGA port(Optional)	8	Audio Output
4	Audio input	9	RS-485/Sensor/Alarm port
5	USB Port	10	DC Power Input Jack

RS485/Sensor/Alarm ports definition(from right to left):

Pin 1-4: Sensor1-4

Pin 5: GND

Pin 6-8: Alarm Output. (pin 6: NO; pin 7: NC; pin 8: COM)

Pin 9-10: PTZ Control port (pin 9: RS-485A; pin 10: RS-485B).

2.3 Remote Controller(Only for reference)



POWER:	Power switch	REC:	Manual Record
2x2:	Quad display	0~9:	Channel Select / Number input;
AUTO:	Dwell time (Sequential Channel Switch) Display	DISPLAY:	Switch Display Mode
SEARCH	Search Recording	ZOOM:	Zoom in/out Function in a special area
BACKUP	Backup record file;	MUTE:	Turn on or off Audio output on the spot mode or Playback Mode
▲, ▼, ◀, ▶	Direction Keys	PTZ:	Enter / PTZ Control
MENU	Menu	SELECT	Select
ESC	EXIT	Z+, Z-:	Zoom in / out
F+, F-	Focus control	▶ :	Play / Pause
■:	Exit play mode	◀◀	Rewind
▶▶	Forward	I◀:	Previous frame
▶I:	Next frame		

Chapter 3: DVR Installation

3.1 Hard Disk Installation

Caution : Please do not take out hard-disk when DVR is running!

- (1) Open DVR upper cover carefully;
- (2) Insert Power Cord and data cable into Pin of hard-disk tightly;
- (3) Put the upper cover back carefully.

3.2 Camera and Monitor Connection

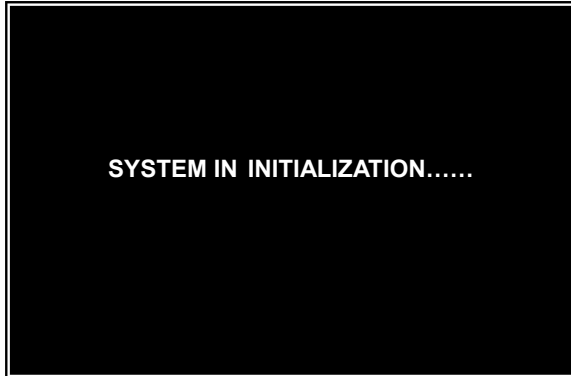
Connect camera signal to video input of DVR, and video output of DVR to Monitor via BNC connector (Refer to section2.2-Rear Panel).

3.3 Power Supply connection

Please only use the power adapter supplied with the DVR itself.

Chapter 4: DVR Boot up

4.1 System Initialization

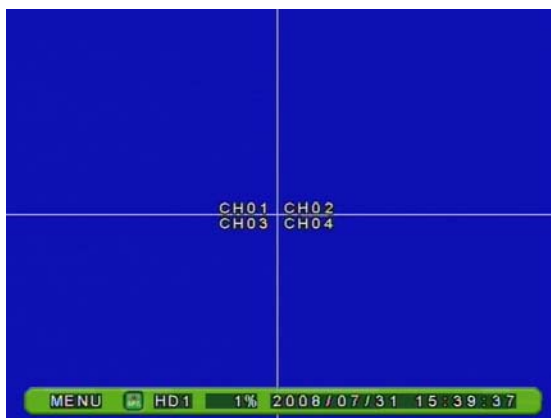


After connecting the power adapter and turning on the power button, the system will boot-up and start initializing.

System will detect mouse, initialize file system and recording parameters etc.

If net-viewer is connected, please break this connection first when system booting-up

4.2 Display mode



After finishing initialization, DVR will enter into display Mode (shown as left picture).

DVR Status bar lies on the bottom of screen, which shows Menu, Recording status, current HDD, HDD used ratio and system time etc.

Menu: Click the [Menu] on the status bar to enter into the Main Menu, and you also could the [Menu] key on press Front Panel to enter

into Main menu.

REC: REC icon [REC] next to [Menu]. When the icon shows in **BLUE** color, that means DVR is on recording mode. Once record mode is set to “always”, DVR will automatically start recording when starting the DVR.

HD1: current Hard Drive

1%: indicates the percentage of hard-disk being used

System Time: display current system time

Chapter 5: DVR Menu

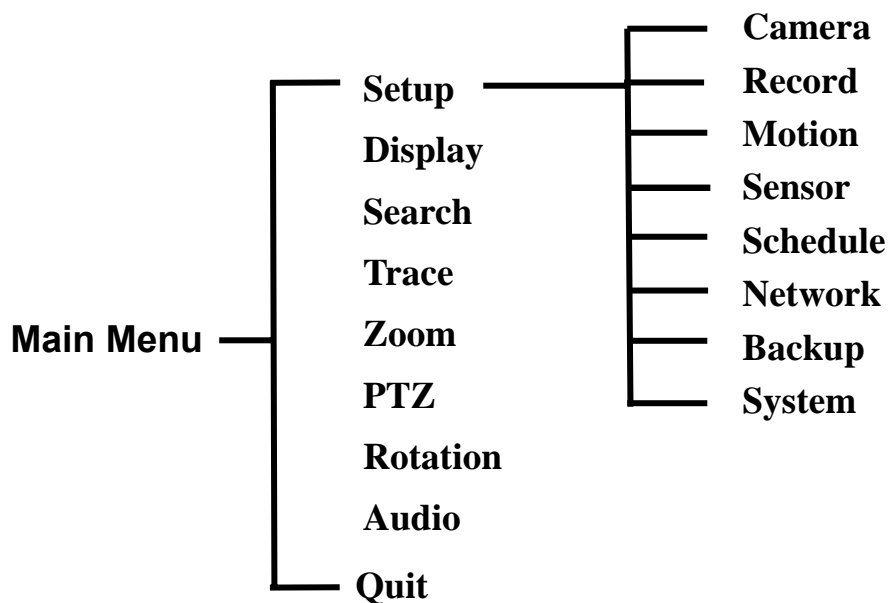
5.1 Main Menu



On Display Mode, press the [Menu] key on the status bar or on front panel to enter into Main Menu (Shown as left picture).

5.2 Menu Preview

Menu Directory



5.3 Setup



On display mode, press [Menu] key to select and enter into setup menu.

The option allows you to setup parameters for Camera, Record, Motion and Sensor etc.

5.3.1 Camera



Channel: Press [◀ or ▶] key to select channel. When selecting [ALL], that means configuring all channels at the same time.

Color: In order to get the best video image, the option allows you to adjust parameters such as brightness, saturation, contrast and hue etc. Details please refer to Section 5.3.1.1.

Title: the option allows you to define the name of each camera. Details please refer 5.3.1.2.

PTZ Protocol: Press [◀ or ▶] key to select protocol, from PELCO-D to PELCO-P.

PTZ address: Press [◀ or ▶] key or numeric keys to adjust physical address of PTZ camera, the value can be changed from 0 to 255.

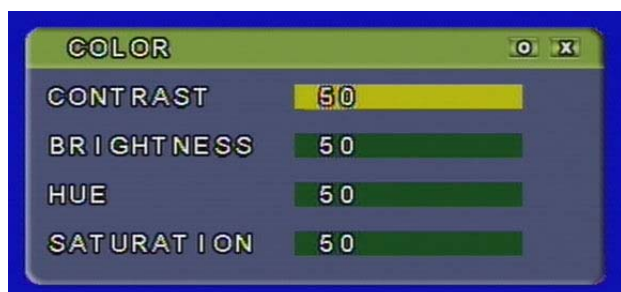
Baud rate: Press [◀ or ▶] key to adjust baud rate, including 600,1200,1800,2400,4800, 9600 and 19200.

Event popup: When alarm is triggered for one channel, DVR will make this channel enlarge to full screen in designated time, the time can be changed from 1 to 10 seconds or off.

Rotation time: Define the dwell time for single channel full screen display when rotation function is turned on. You can use [◀ or ▶] key to select the time value, and rotation time can be changed from 1 to 10 seconds or off.

Press [Enter] key to save the parameters you want to change, and [ESC] key to quit menu.

5.3.1.1 Color Setup



When entering into the [Color] menu, you can adjust parameter of Contrast/Brightness/Hue/Saturation. The level is from 0 to 99. The default value is 50.

Press [◀or▶] key or numeric keys to adjust the parameters, [Enter] key to save

and exit the setup and [ESC] key to quit the setup.

You can adjust the parameters freely as per actual situation to reach the best display effect.

5.3.1.2 Title



Move [▲ or ▼] key to [Title] Menu and press [Enter] key to enter into title setup interface. On the setup interface, move direction keys to select digital numbers or characters and then move the cursor to [ENTER] key in the [keyboard] menu to confirm the numbers or characters you selected, then press it to save

the title you named, and then press [ESC] key to exit.

Please note that Title support up to eight characters or digital number.

5.3.2 Record



Channel: Press [◀ or ▶] key to select channel.

When selecting [ALL], that means configuring all channels at the same time.

Resolution: The option allows you to set resolution. System support CIF(PAL:100frames / NTSL: 120frames) and HD1 (PAL:50 frames / NTSL: 60frames). Only the channel is set to "ALL".

you are allowed to setup resolution.

FPS: The option allows you to set record frame rate, Details please refer to section 5.3.2.1.

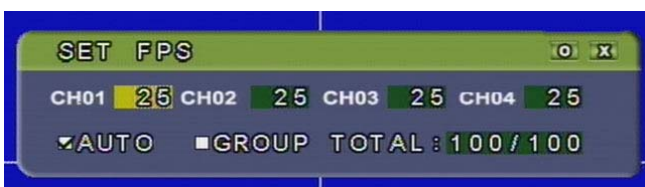
Quality: System supports four levels: low、standard、high、highest. The higher the quality is, the clearer the image is. This will require more HDD space.

Record mode: The option allows you to adjust record mode such as off (no record), always (continuous record), motion (motion record), sensor (sensor record), schedule (schedule record).

Audio: Bind one audio channel to a designated video channel, you can select from 1 to 4 or off.

Press [ESC] key to exit menu, and if you want to save the above setup, please press [Enter] key.

5.3.2.1 Set FPS



Press [◀or▶] key to move cursor to [FPS] and press [Enter] key to enter into sub menu (shown as the left picture):

On NTSC mode, total frames of CIF

format is 120 frames, and HD1 format for 60 frames, and on PAL mode, total frame of CIF for 100 frames, HD1 for 50 frames.

You could select to manually setup frame rate on **GROUP** mode, and on AUTO mode system automatically allocate frames (Under this mode, you couldn't modify the frames). On NTSC mode, max frames for each channel should be 30 frames.

Press [◀or▶] key to select channel, [▲or▼] key to modify the parameters, [ENTER]key to save the modification and exit and [ESC] key to quit the modification and exit.

5.3.3 Motion Detection



Channel: Press [◀ or ▶] key to select channel. While selecting [ALL], it means configuring all channels at the same time.

Motion enable: Turn on or off motion detection function.

Sensitivity: The option allows you to set sensitivity of motion detection. Details please refer to section 5.3.3.1.

Motion Area: The option allows you to set motion detection area. Details please refer to section 5.3.3.2.

Post Record Time: The option allows you to define the recording start time after detecting motion, the value can be changed from 5、10、15to 60 seconds or off.

Buzzer time: The option allows you to define how long buzzer will sound after detecting motion. The value can be changed from 1 to 60 seconds or off.

Alarm time: The option allows you to define how long external alarm time will last after detecting motion. The value can be changed from 1 to 60 seconds or off.

Motion trace: indicates whether screen will display the motion trace when detecting motion. When motion detection is on and there is motion in detection area, the according trace will display in red.

Press [ESC] key to exit menu, and if you want to save the setup, please press [Enter] key.

5.3.3.1 Sensitivity



Press [Enter] button to enter into Sensitivity Menu (shown as left picture).

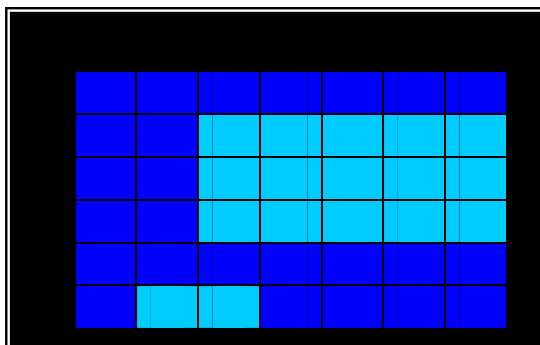
Sensitivity levels include 1- 8.

The lowest is 1, and the highest is 8, and fault value is 4.

After finishing the above set, press [Enter] key to save and exit the menu, and [ESC] key

to quit and exit the menu.

5.3.3.2 Motion Area



Move cursor and select “Motion Area”, and then press [Enter] key to enter into motion area setup interface.

Press [MENU] key or right key of mouse to popup “select/clear/exit” menu, press [select] and [ENTER] key, move cursor to setup motion area. Green blocks represent the

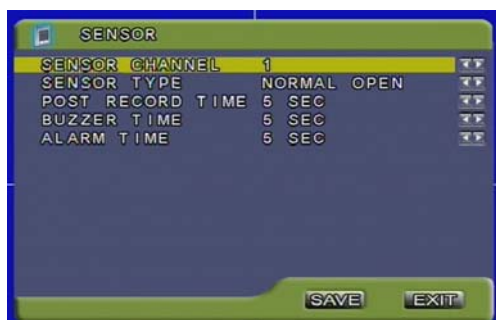
area that is not being detected while transparent blocks are the areas under detections

The [Clear] menu allows you to clear the designated detecting area.

The [ESC] menu allows you to quit the Menu. All the changes will be saved.

5.3.4 Sensor

Note: The DVR systems do not include external Sensor and Alarm.



Move cursor to “SENSOR” icon, press [ENTER] key to enter into sensor setup menu.

Sensor channel: Press [◀ or ▶] to select channel. While selecting [ALL], it means configuring all channels at the same time.

Sensor type: System supports Normal-Open and Normal-Close.

Sensor type: System supports Normal-Open and Normal-Close.

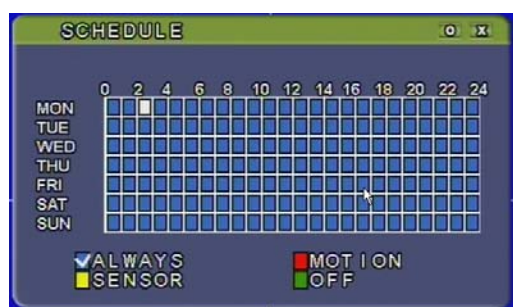
Post Record time: The option allows you to define the recording time after sensor is triggered, the setting value can be changed from 5、10、15、20、25、30、35、40、45、50、55、60 seconds or off.

Sensor type: The option allows you to select Normal Open and Normal Close.

Buzzer time: The option allows you to define how long buzzer will sound when sensor is triggered, the setting value can be changed from 1 to 60 seconds or off.

Alarm time: The option allows you to define how long external alarm will last when sensor is triggered, the setting value can be changed from 1 to 60 seconds or off.

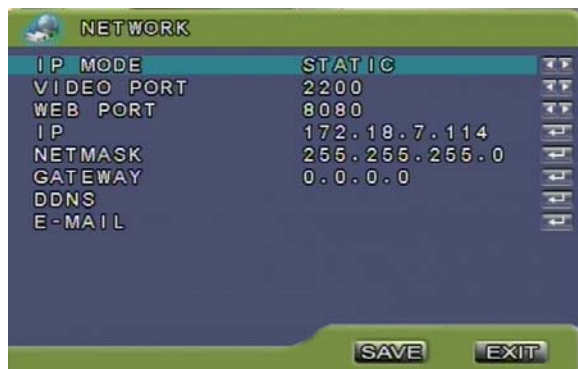
5.3.5 Schedule



The option allows you to set record schedule freely. Referring to the schedule, row “0~24” stands for 24 hours for one day, and column stands for seven days for one week.

Move cursor to any time point on the schedule, and press numeric key 1 (always)/2(Motion)/3(Sensor)/4(off) on front panel or the corresponding icon of screen and [menu] or [select] key to select record mode.

5.3.6 Network



IP Mode: This option allows you to set system network type to DHCP or static. Once you set to static allocation, you will manually setup IP address, Gateway, Net Mask etc. If set to dynamic mode, system will have to provide DHCP server, otherwise, DVR can't capture IP address.

Video Port: indicates network access port number, default value is 2200. You can change the port number as per your actual situation.

Web Port: indicate protocol port number when visiting DVR via IE browse. Fault value is 8080. and you can change port number as per your actual situation.

IP: The IP address must be unique at the local area network.

Net mask: It refers to a subnet mask used to determine what subnet an IP address belongs to a number that is used to identify a sub network so that IP address can be recognized by a local area network.

Gateway: The Gateway is usually housed at the ISP. The gateway connects networks that have different protocols. The Gateway address is provided by your ISP.

DDNS: Make use of fixed domain name to visit the DVR which is mapping dynamic IP address of Router. Please refer to section 5.3.6.2 for detail set method

Email: When motion detected and sensor triggered, system will send out alarm email to designated email address. Details setting method please refer to section 5.3.6.3.

Press[ESC] key to exit, and press [Enter] key to save your setting.

5.3.6.1 External Net Inflection

If you need to visit DVR via External net, you should setup the inflection of video port

Transmission Rule			
Virtual Server			
Svc Port	IP Add.	Protocol	Enable
2200	192.168.1.210	ALL	✓
Save		Cancel	

at the public Router located in the DVR.

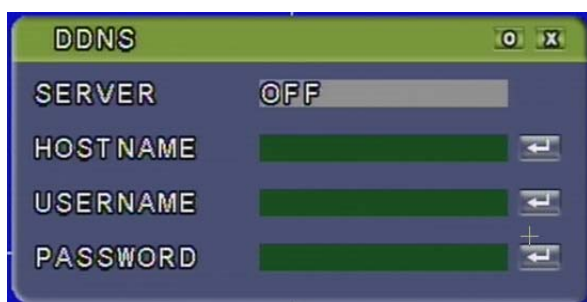
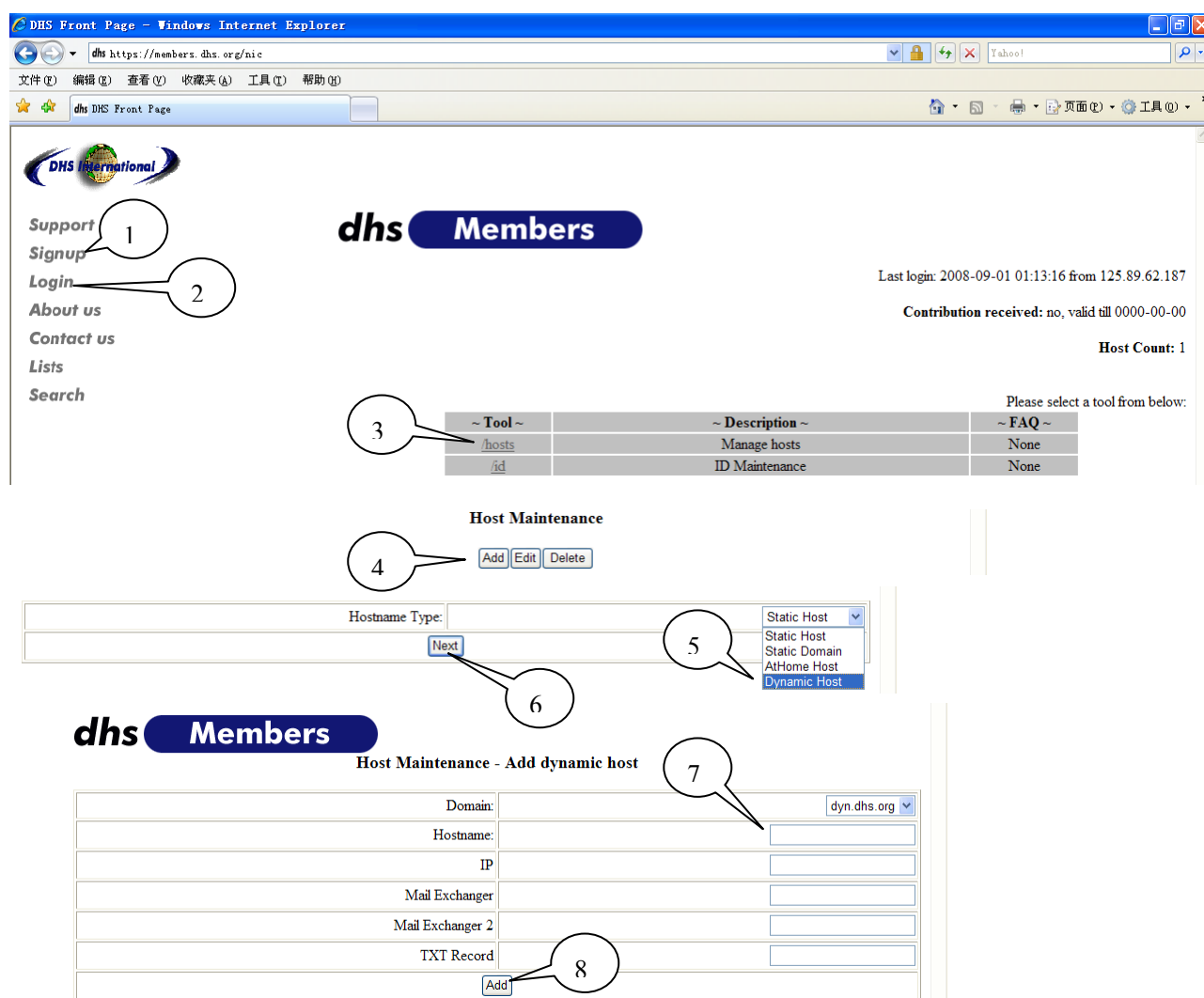
Firstly open the website of router and enter into transmission rule→virtual server to setup service ports (included video port).IP address of external net is same as the DVR

IP address is same as intranet, as for Protocol, please select [All] and tick “v” at Enable column.

5.3.6.2 DDNS

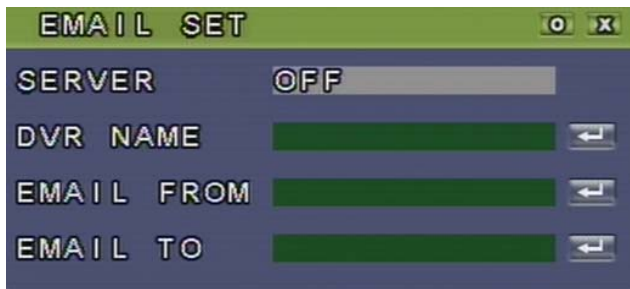
DDNS is mapping dynamic IP address of router to fixed domain name, and we support free DDNS service of www.dhs.org. Take www.dhs.org for example, applying steps are as follows:

Open website of www.dhs.org→Signup→Login→Click '/hosts'→Click 'Add'→Choose 'Hostname Type': 'Dynamic Host'→Click 'Next'→Input Hostname→Click 'Add'.



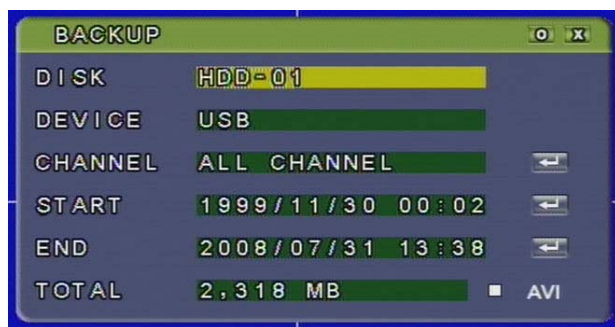
Please firstly select DDNS server, and then fill in “members.dhs.org” at DDNS server column as per the dynamic domain name applied by you, and fill in host name, user name and password accordingly.

5.3.6.3 E-MAIL



Please firstly open Email server, and fill in DVR name, which you can freely define, and address at [EMAIL FROM] and [EMAIL TO] column.

5.3.7 Backup



[Backup] menu will be available when only plugging USB Thumb drive (shown as left picture.):

Disk : Select HDD your backup file located at.

Device: USB Thumb drive

Channel: Select any channel which you

want to backup.

Start: indicate start time you need to backup.

End: indicate end time you need to backup.

Please note you can press [Select] key or click mouse to enter into the above-Mentioned three items.

Total: indicate backup file size. When finishing start time and end time, system will automatically display backup file size.

AVI: back-up the video you choose to AVI format, and can playback it through common player. Click the [Select] key or mouse left key to select the icon. Please note AVI backup just can backup the video of one channel.

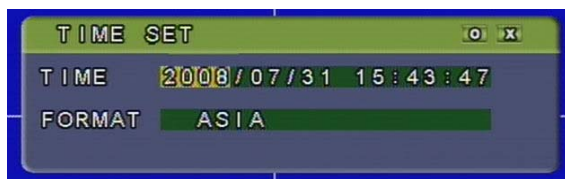
After finishing all the above setting, you can start to backup recording file by pressing [Enter] key.

5.3.8 System



Enter into [System] menu to setup system time, Password, Video System, or view system info and Log etc.

5.3.8.1 Time Set



There are three time format options. We setup different time format according to different zone.

Date format: YY/MM/DD for Asia; DD/MM/YY for Europe; MM/DD/YY for USA. Please press [◀/▶] key to move cursor and press [▲/▼] key to adjust values.

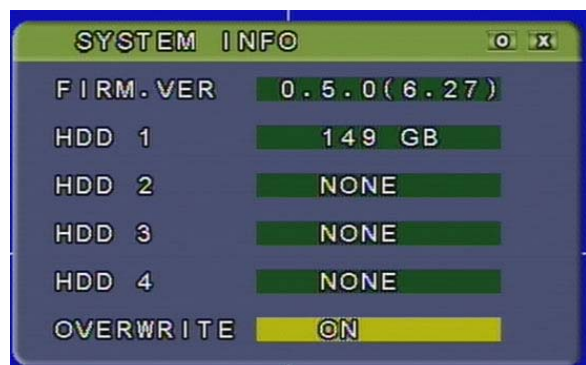
5.3.8.2 System Password



Input new password and confirm the password. The password supports up to eight characters or number. Detail setting methods please refer to the section 5.3.1.2

Once you set system password, you will have to input the new password when entering menu or log in network. Please remember the modified password firmly. If you forget the password, please feel free to contact our customer service for assistance.

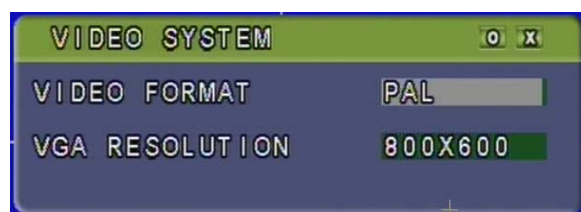
5.3.8.3 System Info



Firmware Ver.: Firmware version of DVR.

HDD overwrite: ON/OFF. If you choose “ON”, recording continues and overwrites previous recordings when the hard drive is full. If you choose “OFF”, the recording process will stop recording when hard drive full.

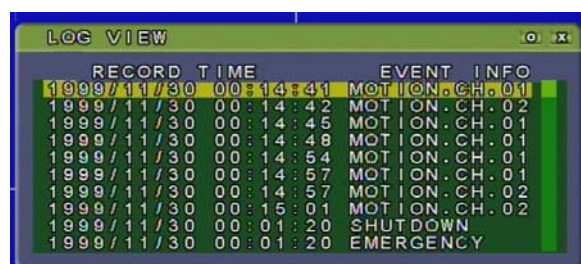
5.3.8.4 Video System



Press [◀or▶] key to select PAL or NTSC. Please select the set according to camera.

VGA Solution indicate monitor solution when VGA port connected to Monitor, including four choices-640*480、800*600、1024*768、1280*1024.

5.3.8.5 Log View



In this window you can check related log information of DVR, e.g.: system booting, motion detection、sensor triggered、manual record etc.

5.3.8.6 Log Set



Log set determines what information DVR will be written into the system log file.

5.3.8.7 Disk Format



Firstly select disk which you want to format, and then press [ENTER] key to format the HDD.

Caution: if you format the hard drive, it will erase all the data in the hard-disk.

If net-viewer have been connected, please break this connection before format.

5.3.8.8 Firmware Upgrade

You can proceed firmware upgrade on DVR via USB Thumb Drive. Please restart DVR and restore all the factory default setting after successful upgrade.

5.3.8.9 Restore the factory default

Move cursor to the Menu and click left key of Mouse or [Enter] key of Remote Controller to restore factory default.

CAUTION: You must restore the factory default after upgrade!

5.3.8.10 Language Select

You can change the OSD language from the default language to other languages

5.4 Display Mode

DVR supports multiple display modes, such as 2x2, PIP1 and PIP2. And press [Display mode] key on remote controller / main menu to switch display mode.

5.5 Search Setup

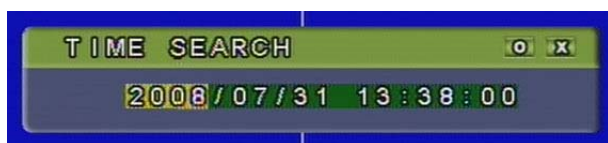


DVR supports three search modes: Time search , Event search and Urgent search.

Press [SEARCH] key on front panel or main menu to enter into search menu.

Select the recorded file and press [ENTER] key to play the file.

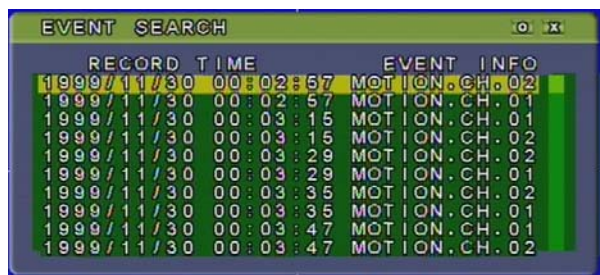
5.5.1 Time search



1).TIME SEARCH: Search the recorded images according to the accurate time.

Press [◀or▶] key to move the cursor and press [▲or▼] key to adjust the value. After finishing the above setup, press [Enter] key to play the record.

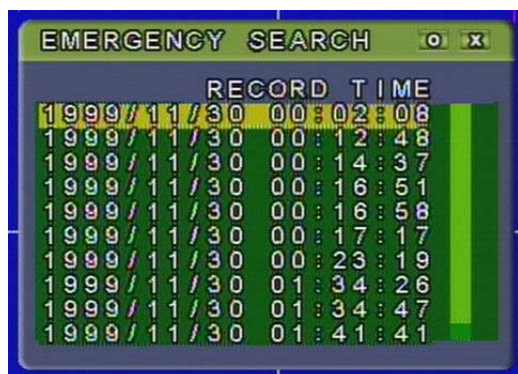
5.5.2 Event Search



2).EVENT SEARCH: Search the recorded images according to the recording type.

Press [▲/▼] key to select the file, and [ENTER] key to start playing.

5.5.3 Urgent search



EMERGENCY SEARCH: Search the manually record images Press [▲or▼] key to select a file, and then press [ENTER] key to start playing.

5.5.4 Record playback

On playback mode, press [▶ ||] button to play or pause a recording,[ESC] key to quit the playback mode, [◀◀]or[▶▶] button to rewind/forward the record. DVR can support multiple play speeds (X2, X4, X6,X8 and X10) for rewinding or forwarding, also supports single frame rewind or forward play.

NOTE: On playback mode, [◀and ▶] keys on the front panel or [||◀or▶||] on the screen /remote controller are used to play a record frame by frames.

If recording file is too short (e.g. 10s or 20s), play speeds (X8 and X10) are not available.

5.6 Motion Trace

Turn on or off motion trace function. When any object is moving on motion detection area, the tracer which the object located at will display in red.

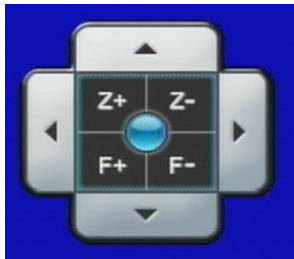
Note: The function will be available only when turning on Motion detection mode, setting detection area and turning on motion trace of the channel.

5.7 Area Zoom in/out

The option allows you to enlarge a special area and view the area more clearly. Select a channel and then select the option. At this moment you could enlarge the selected area by sliding mouse. Please note sliding area can't overtake full screen, otherwise, the picture will turn back the original ones.

Click the right button of mouse, double-click left button or press [ESC] key to exit the [Zoom] function.

5.8 PTZ Control



Select PTZ channel you need to control, and press [PTZ] button on main menu to open PTZ control interface.

At this moment, you could click Z+&Z- keys to zoom In or out and click F+&F- keys to control focus function.

Please firstly enter into "Setup→ Camera" to setup PTZ protocol, Baud rate and address for each channel.

5.9 Rotation

The function allows you to start or stop rotation full display of each camera in turn. Enter into "Setup→ Camera→Rotation time" to set the rotation time of each channel.

5.10 Audio

Turn on or off audio output.

Please confirm audio input have been bound with video input before turning on.

Enter into "Setup→ Record→Audio" menu to setup the function.

5.11 Quit

Shut down system normally.

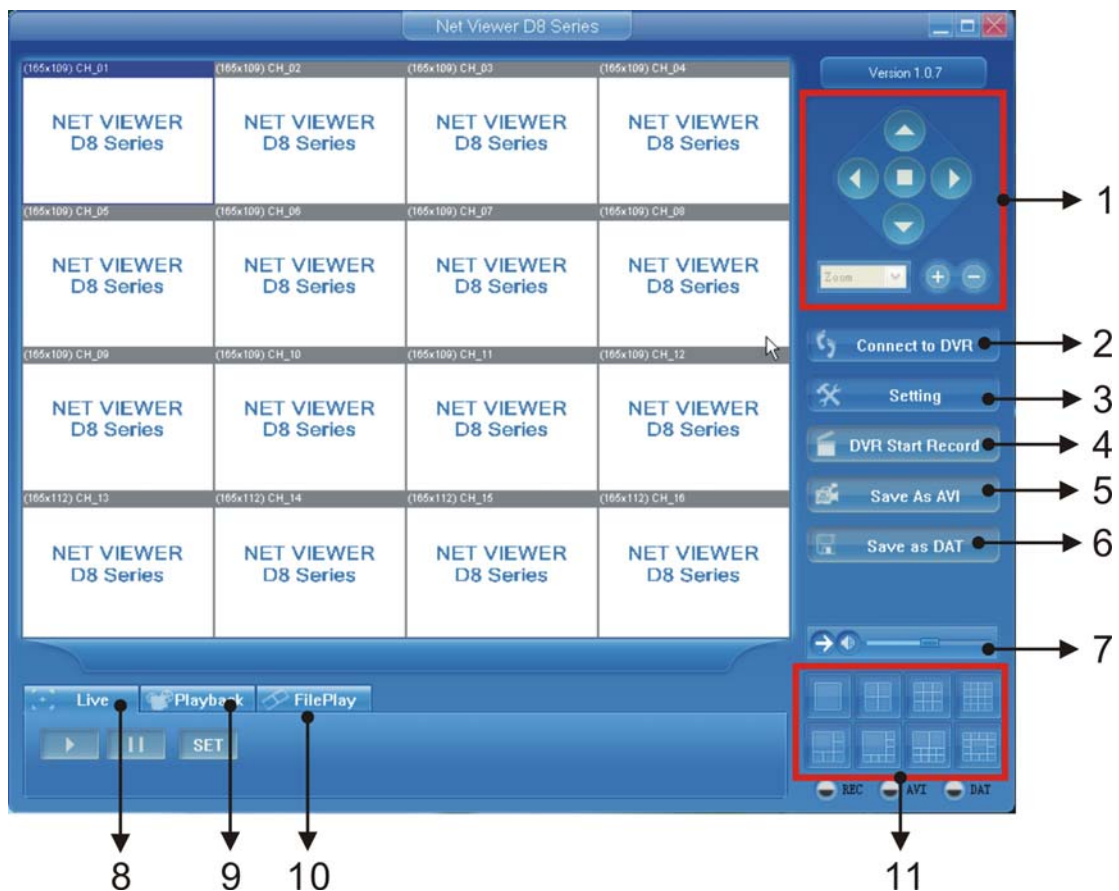
Remind: Please shut down HDD Recorder normally , not directly unplug power (especially when recording),to avoid any damage to HDD.

Chapter 6: NetViewer Program

6.1 Installation Procedure

1. Insert the software CD into your CD-ROM drive;
2. Open the CD file;
3. Double-click the setup file to run the installation program;
4. Follow up the instruction to finish the installation step by step.


6.2 Program Main Interface

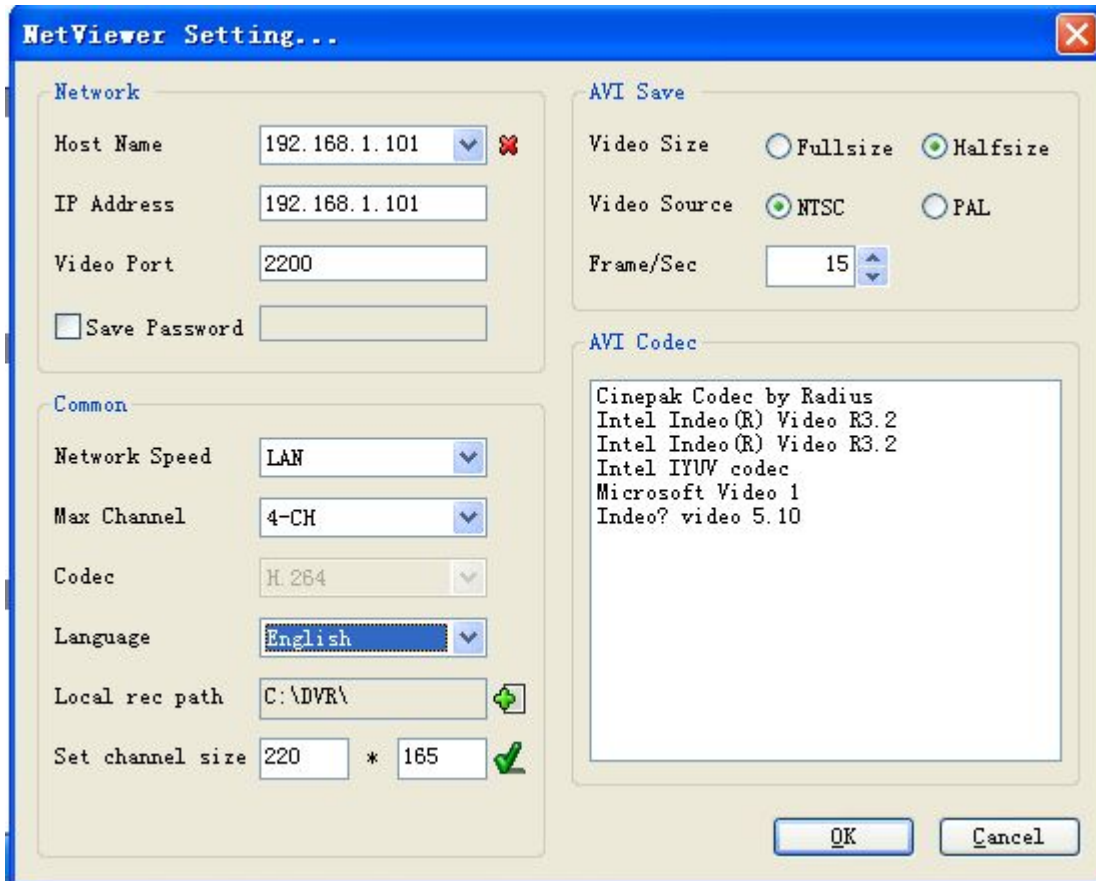


1. PTZ Control buttons : These button allows you to control PTZ cameras;
2. Network Connection: Press the button to connect or disconnect network;
3. Net-viewer Program setup: Setup the software parameter;
4. DVR record: Remotely start or stop DVR manual recording function;
5. AVI Record: Convert video stream to AVI file and save it in your computer on Live Mode;
6. Backup: Backup the video stream to your computer with a special format.(On live mode, you can play video of the special format via net-viewer);
7. Audio control: On or off audio transmission, audio playback and tone control;
8. Live Mode: Remote display Live image;
9. Playback Mode: Remote playback DVR's recording;

10. File Play Mode: Play recording backup;
11. Display mode switch: The button allow you to switch to different display mode.

6.3 Login- in System

- 1). Press “ Setting” button to enter into the below setup windows:



Host Name: indicate device name you want to visit remotely. You can setup the hostname freely.

Host Address: indicates Remote IP address of DVR, and the address is same as network IP address of DVR.

TCP Video Port: indicates data transmission Port and it's should be same as DVR'S corresponding port no. of DVR.

Save password: the option allows you to save visit password of DVR or not. The password equals to system password of DVR.

Network Speed: Please select “LAN” when DVR connecting to local area network, and select “Internet” when connecting to internet. User could select suitable Network speed freely as per request.

Remark: If you choose wrong Network speed here, there may be network audio/video delay.

Max Channel: Select channel quantity according to the channels connected to DVR.

Codec: Select H.264.

Language Select: Select Language which you want.


Local rec Path: indicate recording save path.

Set channel size: Setup size for each channel on the screen.

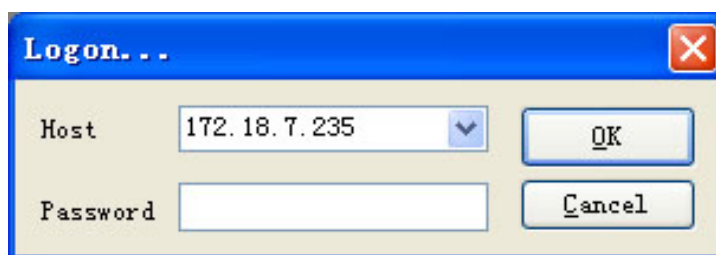
Open Log function: The option allows you to open or close Log function. When opening the function, you will find Log file for every operation through the local save path.

AVI Save: The option allows you to setup video size, video source and frame/sec.




AVI Codec: Select a AVI codec program to proceed video stream processing; Please click [OK] key to save the above parameter setup.

2). Click “” button to pop up the below window and input system password, and system will prompt you if the connection is successful or not.

Note: Please firstly connect Hard-disk to DVR well before connecting network.



6.4 Working Mode

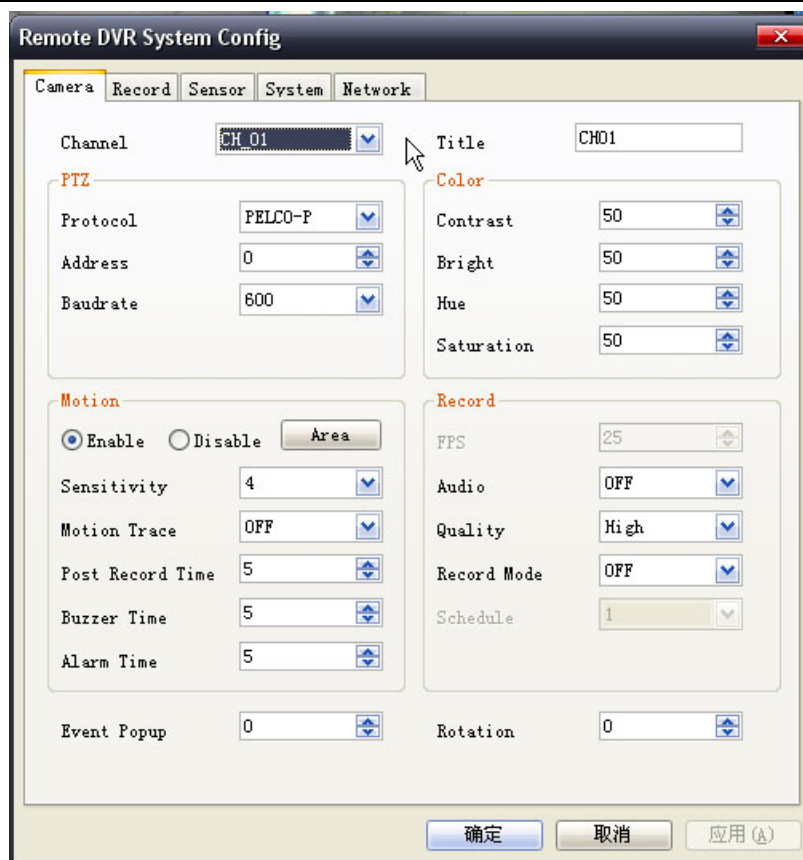
1). Live Mode: After successful connection, click “” icon to enter into Live Mode, and then click “ Play” button to display image. If you want to stop to monitoring, please click “ pause” button to stop.




On Live mode, system could proceed PTZ control. Firstly you should setup PTZ protocol, Baud rate and PTZ address on one channel, then enter into PTZ operation interface on DVR; next double-click the camera you want to control. At this moment, you could proceed PTZ control by clicking the PTZ button at the top of screen.


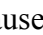
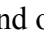
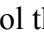
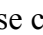

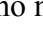

After successful connection, click [] icon to enter parameter setting of DVR.


Please note you could set almost all parameters except network set on parameter set menu. When entering into menu, please not set up any parameters through net-view program to avoid any confliction.




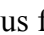
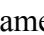



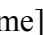
2). Remote playback: After successful connection, click “  Playback ” icon to enter into remote playback mode.



Input a specified time of recorded file that you want to search, and click [ Play] to remote play the recording file. If you want to playback the other recording, press [ pause] button and modify the specified time, and then click [ Reset] and [ Play] button. And on playback mode, you also press [ pause] / [ previous Frame] / [ next frame] to control the recording file. If you want to select event list to playback a history recording, please firstly pause current recording, and then click [ Event list] icon.

3). File Play: Click [ FilePlay] File Play] icon to enter into file play mode(no need to connect to net-viewer).



The function is usually used to play backup video file. Press [ open] icon to open the backup file. And you also can press [ play], [ pause], [ previous frame], [ next frame], [ first frame] or [ last frame] icons to control the recording file.

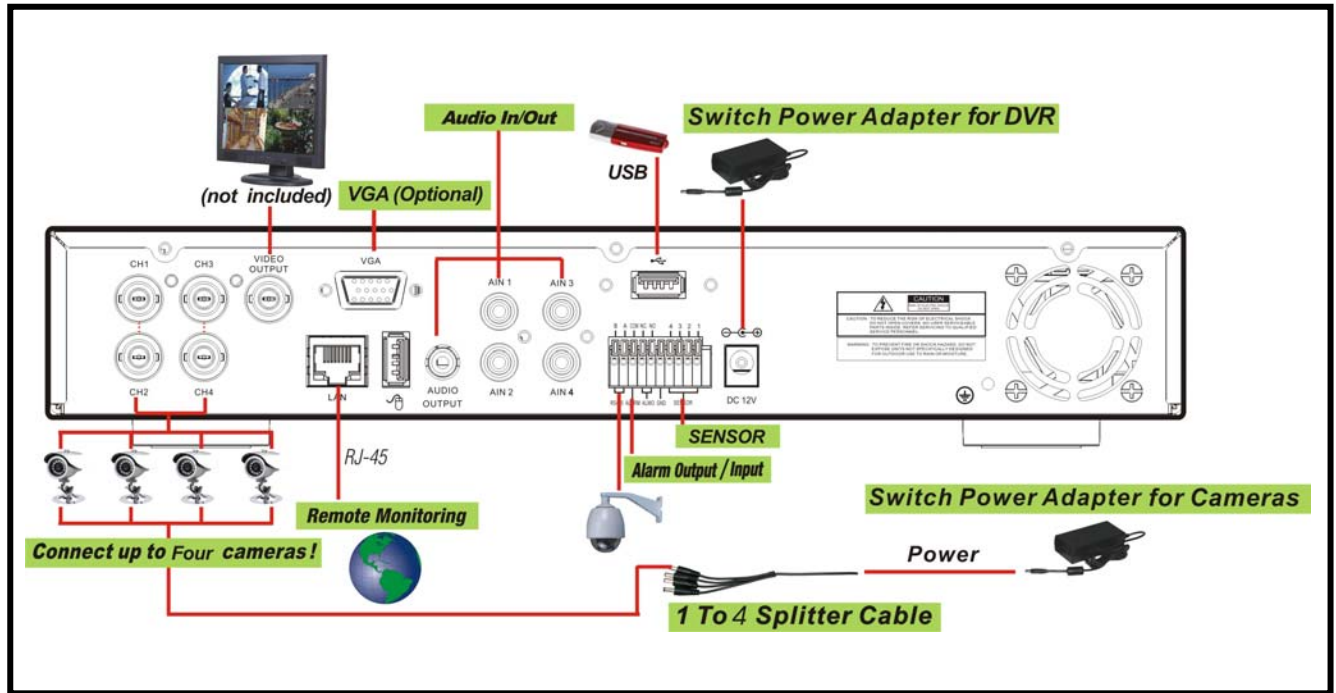
Chapter 7: Specification

4-CH DVR

Item	Description	
System	NTSC/PAL	
Video Input/Output	4-CH Input / 1-CH Output	
Audio Input/Output	4-CH Input / 1-CH Output	
Display	Resolution	NTSC: 720×480@30fps(Each CH) PAL: 720×576@25fps(Each CH)
	Feature	Full-D1 / Quad Display/ PIP, Single-CH Seq. Display
Record	Resolution	NTSC: 720×240,360×240 PAL: 720×288, 360×288
	Feature	Frame rate adjustable
	Quality	4 Level(Highest, High, Normal, Low)
Audio	ADPCM2 Codec	
Video	H.264 Compression	
Motion Detection	Setting Area and checking Sensitivity	
Micro-processor	32-bit RISC Processor	
LAN Port	RJ45	
HDD Port	Support SATA HDD	
Mouse	Supports mouse with USB and PS2 function	
PTZ Control	RS- 485 Port	
USB Interface	USB Thumb Drive Backup or Upgrade	
VGA Output	Support VGA Output (Optional)	
IR Remote Control	Support IR Remote Control	

Chapter 8: Appendix

8.1 System Connection Diagram



8.2 Accessory (Optional)



Power Cord
Design may vary depending on country



Power Adaptor



User Manual



CD Disk



Remote Controller

The material in this document is the intellectual property of our department .

No part of this manual may be reproduced, copied, translated, transmitted, or published in any form or by any means without our department prior written permission.

Our products are under continual improvement and we reserve the right to make changes without notice. But no guarantee is given as to the correctness of its contents.

We do not undertake any responsibility for the harms cause by using our product.

The model of the products in the user's manual only for recognition, but these names also perhaps are belong to other company's registered trademark or the copyright.

The product picture may differ from the actual product, only for your reference. The accessories will probably be different according to the different selling areas. For details of accessories, please refer to your local distributor.

Copyright reserved