



# Avid® Recording Studio User Guide

Version 8.0.3

## **Legal Notices**

This guide is copyrighted ©2010 by Avid Technology, Inc., with all rights reserved. Under copyright laws, this guide may not be duplicated in whole or in part without the written consent of Avid Technology, Inc.

Avid, Pro Tools, Pro Tools SE, M-Audio and Fast Track are either trademarks or registered trademarks of Avid Technology, Inc. All other trademarks contained herein are the property of their respective owners.

Product features, specifications, system requirements, and availability are subject to change without notice.

**Guide Part Number** 8420-30231-01 REV A 06/10

## **Documentation Feedback**

At Avid, we are always looking for ways to improve our documentation. If you have comments, corrections, or suggestions regarding our documentation, email us at ***techpubs@avid.com***.

# contents

<b>Chapter 1. Introduction</b> .....	1
Recording Studio Features .....	1
System Requirements .....	2
Hardware Registration .....	2
Pro Tools SE Guide Set .....	2
<b>Chapter 2. Controls and Connectors</b> .....	3
Front Panel .....	3
Back Panel .....	4
Top Panel .....	5
<b>Chapter 3. Installing Recording Studio</b> .....	7
Installation Overview .....	7
Mac OS X .....	7
Windows .....	8
MP3 Export Option .....	9
Hardware Connections .....	10
Checking Your Signal Path .....	10
Software and System Configuration .....	11
<b>Chapter 4. The Software Control Panel</b> .....	13
Accessing the Control Panel .....	13
Latency Tab (Windows) .....	13
Sample Rate Tab (Windows Vista and Windows 7) .....	14
Performance Tab (Mac OS X) .....	14
About Tab (All Systems) .....	14

<b>Chapter 5. Using Recording Studio</b> .....	15
Launching Pro Tools SE .....	15
Recording Audio Tracks .....	16
Adjusting the Output Level .....	17
Direct Monitoring .....	18
Sample Rate and Bit Depth .....	18
Opening a Recent Session .....	19
<b>Appendix A. Additional Information and Support</b> .....	21
Pro Tools SE .....	21
M-Audio Drivers .....	21
Before Updating Your System .....	21
<b>Appendix B. Compliance Information</b> .....	23
Environmental Compliance .....	23
EMC (Electromagnetic Compliance) .....	24
Safety Compliance .....	24

# chapter 1

## Introduction

Welcome to Avid® Recording Studio. Recording Studio turns your Mac or PC into a complete music production environment, by combining a low-latency M-Audio® Fast Track® audio interface and Pro Tools® SE from Avid®.

Pro Tools is the industry standard platform in music production software that is used in top recording facilities around the world. Whether you're new to music production or a seasoned professional wanting to take Pro Tools SE on the road, this package includes what you need for a professional-quality recording setup.

Please take the time to read this User Guide. It will explain how to get the best results out of your Recording Studio.

---

## Recording Studio Features

### M-Audio Fast Track Audio Interface


- Low latency performance
- Balanced XLR mic-level input with high-quality mic preamp
- 48V phantom power for condenser microphones
- 1/4-inch guitar input
- Input Signal and Clip LED indicators
- Direct Monitor Button
- 1/4-inch stereo headphone output
- Stereo line-level RCA outputs
- Up to 24-bit, 48 kHz operation
- USB powered

### Pro Tools SE music production software

---

## System Requirements

Minimum System Requirements can be found on the Avid website at [www.avid.com/support](http://www.avid.com/support).

 *A qualified version of Adobe® Flash® Player is required.*

---

## Hardware Registration

Please register your product online at [www.avid.com/support](http://www.avid.com/support). By doing so, you become eligible to receive the following:

- Technical support information
- Software update and upgrade notices
- Hardware warranty information

---

## Pro Tools SE Guide Set


Complete documentation can be accessed via the Help Menu.


## Interactive Guides and Tutorials


Interactive guides and tutorials can be accessed via the Pro Tools SE Quick Start dialog or the Help Menu while the program is running.

## Conventions Used in This Guide

The following symbols are used to highlight important information:

 *User Tips are helpful hints for getting the most from your system.*

 *Important Notices include information that could affect your data or the performance of your system.*

 *Cross References point to related sections in this and other Avid guides.*

## chapter 2

# Controls and Connectors

### Front Panel



**1 Phantom Power Indicator (48V)** This LED illuminates when Phantom Power switched on.

**⚠** *Although phantom power can be used safely with most microphones, it may damage some ribbon microphones. Always turn off phantom power and wait at least ten seconds before connecting a ribbon microphone.*

**2 Microphone Input** This connector accepts a standard XLR microphone cable.

**3 Signal/Clip Indicator** The green LED indicates the presence of an input signal. The red LED indicates “clipping” or distortion.

**📖** *For more information, refer to Chapter 5, “Using Recording Studio.”*

**4 Guitar Input** This 1/4-inch jack lets you connect an electric guitar, bass, or other instrument.

**5 Direct Monitor Button** This button switches Direct Monitoring on and off, which provides a latency-free mix of the input signal and the output of your music software.

**📖** *For more information, refer to “Direct Monitoring” on page 16*

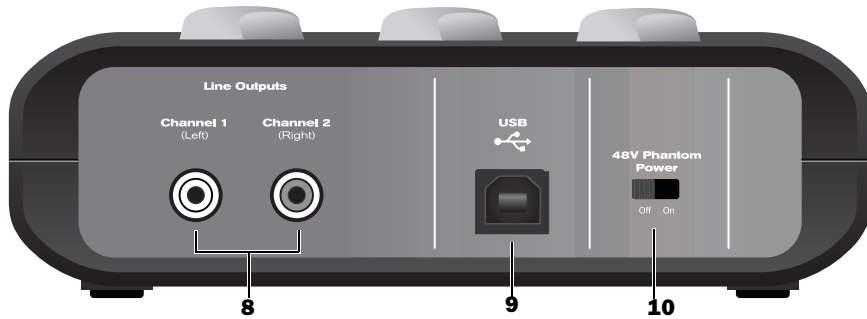
**6 Headphone Output** This 1/4-inch output jack lets you connect stereo headphones. The level is controlled by the top-panel Output Gain knob.

**⚠** *Connecting your headphones disables the back-panel Line outputs.*

**7 Power Indicator** This LED indicates that Fast Track is receiving power from the USB port on your computer.

---

## Back Panel



**8 Line Outputs** These line level RCA outputs (left and right) allow you to connect Fast Track to a pair of powered studio monitors, a mixer, or stereo amplifier. The volume level for these outputs is controlled by the top-panel Output knob.

These outputs are disabled when headphones are connected.

**9 USB Port** This port is used for connecting Fast Track to your host computer, using the supplied USB cable.

**10 48V Phantom Power Switch** When this switch is in the “on” position, 48V phantom power is sent to the XLR Microphone input. This is used with condenser microphones requiring external power. The Phantom Power Indicator LED illuminates when phantom power is on.

**⚠** *Although phantom power can be used safely with most microphones, it is possible to damage some ribbon microphones. Always turn off phantom power and wait at least ten seconds before connecting a ribbon microphone.*

*For more information, refer to the documentation for your microphone.*



---


## Top Panel



**11 Microphone Gain Knob** This knob controls the volume for the Microphone input when setting recording levels.

**12 Guitar Gain Knob** This knob controls the volume for the Guitar/Line input when setting recording levels.

**13 Output Knob** This knob controls the volume for the front-panel Headphone output and back-panel Line outputs.

 For more information, refer to Chapter 5, “Using Recording Studio.”



## chapter 3

# Installing Recording Studio

This chapter shows you how to install Recording Studio on Mac OS X and Windows.

---

## Installation Overview

The Recording Studio installation includes the following steps:

- 1 Installing Pro Tools SE.
- 2 Installing M-Audio Fast Track driver.
- 3 Connecting M-Audio Fast Track.
- 4 Software configuration.
- 5 System configuration.

---

## Mac OS X

The Pro Tools SE DVD runs a two-stage installation process. Stage 1 installs Pro Tool SE, and Stage 2 installs the Fast Track Driver.

**⚠** *It is important to carefully read and follow all on-screen instructions.*

### To Install Recording Studio:

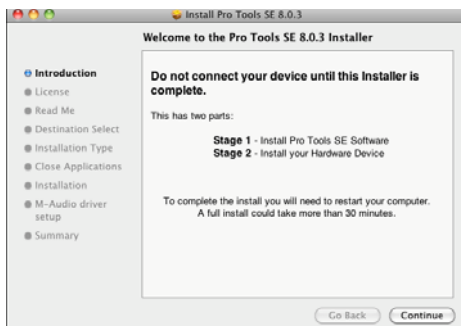
- 1 Make sure Fast Track is not connected to your computer.
- 2 Insert the installation DVD into your computer.

- 3 When the disc opens, double-click the installer icon to launch the installation.



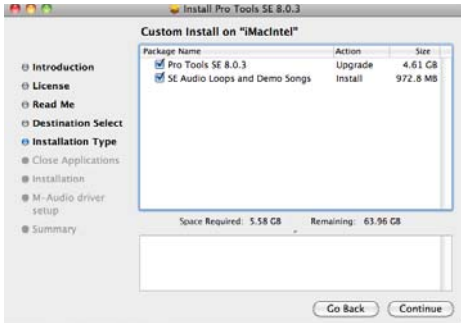
**Recording Studio Installer Icon**

- 4 Click “Continue” on the Welcome screen, and follow all on-screen instructions.



**Pro Tools SE - Welcome Screen**

5 When the following screen appears, click “Continue” and follow the on-screen instructions.



Click **Continue**

**⚠** Software instrument content is very large and may take up to 30 minutes to install. During this time, the progress bar may not appear to move but your software is still installing. Do not terminate your installation.

6 Choose the picture of Fast Track on the next screen, click “Continue” and follow the on-screen instructions to install the Fast Track driver.



**Driver Selection - Fast Track**

7 Once the installation is complete and your computer has been restarted, connect Fast Track to an available USB port on your computer.

## Windows

The Pro Tools SE DVD runs a two-stage installation process. Stage 1 installs Pro Tool SE, and Stage 2 installs the Fast Track Driver.

**⚠** It is important to carefully read and follow all on-screen instructions.

### To Install Recording Studio:

1 Make sure Fast Track is not connected to your computer.

2 Insert the Pro Tools SE DVD into your computer.

**⚠** In Windows 7, if the User Account Control dialog appears, click “Allow.”

**💡** If the Welcome screen doesn't appear, locate and double-click Setup.exe.



**Pro Tool SE - Welcome Screen**


3 Click “Continue” to install Pro Tools SE.

**⚠** Software instrument content is very large and may take up to 30 minutes to install. During this time, the progress bar may not appear to move but your software is still installing. Do not terminate your installation.


4 When the following screen appears, choose the picture of Fast Track, and follow the on-screen instructions to install the Fast Track driver.



**Driver Selection - Fast Track**

 You may be notified that the driver being installed has not passed Windows Logo Testing, or asked whether the program you wish to run is a trusted application. Click “Continue Anyway” (Windows XP) or “Install” (Windows 7) to proceed with the installation.


5 Once the installation is complete and your computer has been restarted, connect Fast Track to an available USB port on your computer.

 Windows XP users may encounter additional dialog boxes. If so, proceed with steps 8 through 10.

6 Windows XP will ask if you want to search the Internet for a driver. Choose “No, not this time” and click “Next.”

7 If the Found New Hardware Wizard dialog appears, choose “Install the software automatically” and click “Next.”

8 Click “Finish” once the software has been installed.

 If the Found New Hardware Wizard reappears, repeat steps 8 through 10.

If the Windows Logo Testing or “trusted application dialog appears, Click “Continue Anyway” (Windows XP) or “Install” (Windows 7).

---

## MP3 Export Option

The MP3 Export Option lets you create MP3 files from Pro Tools sessions when exporting a region or a Timeline selection as a new audio file.

With the MP3 Export Option, the MP3 file type is available when using File > Export > Audio. Pro Tools uses the Fraunhofer codec for encoding MP3 files.

## Authorizing the MP3 Export Option

The MP3 Export Option is a paid option and can be purchased and authorized when you export an audio file as an MP3.

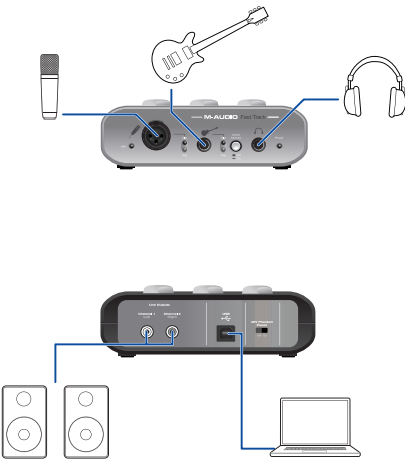
**To authorize the MP3 Export Option using an authorization code:**

- 1 Launch Pro Tools.
- 2 Open a session.
- 3 Click on a region or make a Timeline selection and choose File > Export > Audio.
- 4 Select Compressed MP3 as the File Type.
- 5 Click Export.
- 6 In the Pro Tools MP3 Option dialog, click Authorize.
- 7 In the Pro Tools MP3 Export Option dialog, select Manual Activation, then click Next.

- 8 In the Pro Tools MP3 Export Option dialog, deselect the Use my iLok Smart Key option, then click Next.
- 9 When prompted, enter your Pro Tools MP3 Export Option serial code (authorization code).
- 10 Click Next and follow the on-screen instructions to complete the authorization process.

---

## Hardware Connections



Once Pro Tools SE and the Fast Track driver have been installed, connect Fast Track to an available USB port on your computer. Make sure all three knobs on the top panel are turned all the way off (counter-clockwise) and make the additional connections described below:

### Front Panel

Connect your microphone or instrument (electric guitar or bass) to the appropriate input.

If needed, connect your headphones to the Headphone output.

**⚠** *Connecting your headphones disables the back-panel Line outputs.*

### Back Panel

Connect your powered monitors, stereo power amp, or mixer to the Line outputs.

**⚠** *Make sure your powered monitors, stereo power amp, or mixer is turned off **before** connecting them to your Fast Track interface.*

---

## Checking Your Signal Path

### Listening to Demo Songs

Listening to demo songs is an easy way to verify audio. To hear the audio from Pro Tools you will need your headphones or speakers connected to your audio interface.

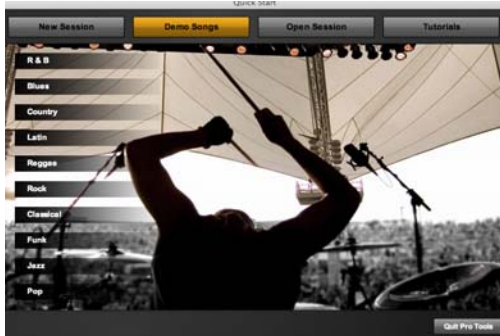
#### To listen to a demo song:

- 1 Use the Pro Tools SE icon to launch the program:
  - **Mac** Click on the Pro Tools SE icon in the Dock (or double-click the icon in the Pro Tools folder inside the Digidesign folder).
  - **Windows** Click the Start button and locate the Pro Tools SE icon (or double-click the icon in the Pro Tools folder inside the Digidesign folder).



Pro Tools SE Icon

2 When the Pro Tools SE Quick Start dialog appears, select the Demo Songs button.



*Pro Tools SE Quick Start Dialog - Demo Songs*

3 From the list of music styles, select the category you want (or select an item from a sub-menu).

4 Click Audio Preview to listen to the song. If you want to open the song in a Pro Tools session click Choose.

Whether you click Audition Preview or the play button in the open demo session, you will hear the song playing through your speakers or in your headphones.

If you do not hear anything, check your hardware connections and signal levels, then repeat step 4.

---

## Software and System Configuration

Pro Tools SE automatically selects and configures Fast Track for audio recording.

Detailed information explaining how to configure your system for optimum performance can be found in the Pro Tools SE User Guide.

This important information covers both Mac OS X and Windows systems, and includes tips on hard drive configuration and maintenance.

We strongly recommend reading these chapters to ensure the best performance from your Pro Tools SE system.





## chapter 4

# The Software Control Panel

The Software Control Panel lets you to adjust various system settings for Mac OS X and Windows.

The Control Panel is divided into separate pages, each accessible by clicking on the corresponding tab.


**A** *The Control Panel will not be available unless the Fast Track driver is installed, and will be blank unless the interface is connected to your computer.*

## Accessing the Control Panel

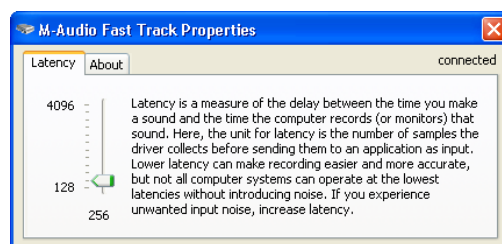
### Mac OS X

The Software Control Panel can be found in System Preferences, under “Other.”

### Windows

Double-click the M-Audio logo  located in the system tray, generally located at the bottom right of your Windows desktop.

## Latency Tab (Windows)




Latency is the time it takes for an input signal to pass through your recording software and appear at the outputs. This latency can result in a delay when overdubbing to existing tracks.

This slider lets you control the amount of latency by adjusting the buffer size in units of samples. The default buffer size is 256 samples

Smaller buffer sizes result in lower latency, but may cause clicks, pops and dropouts on slower systems. If you are experiencing clicks and pops in your recording, try increasing the buffer size.




*To adjust the buffer size in Pro Tools SE, choose File > Preferences to open the Preferences dialog, then choose the Audio page. This lets you choose one of the two radio buttons in the lower half of the dialog.*

 Refer to the *Pro Tools SE User Guide* for more information about setting the buffer size and other important settings when configuring Pro Tools SE.

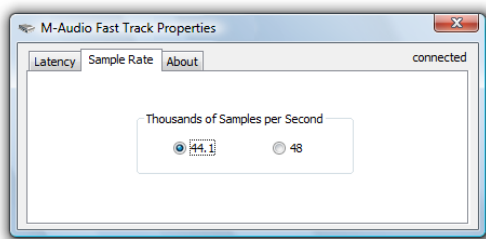
## Mac OS X

In Mac OS X, the buffer size is adjusted within Pro Tools SE by choosing the File Menu > Preferences to open the Preferences dialog, and then choose the Audio page. This lets you choose one of the two radio buttons in the lower half of the dialog.


 Refer to the *Pro Tools SE User Guide* for more information about setting the buffer size and other important settings when configuring Pro Tools SE.

---

## Sample Rate Tab (Windows Vista and Windows 7)



Although the Sample Rate is adjusted in Pro Tools SE, This page lets you to select a sample rate of 44.1 kHz or 48 kHz. This is provided so that MME applications in Vista have access to both supported sample rates.


 For more information, see “Sample Rate and Bit Depth” on page 18.

---

## Performance Tab (Mac OS X)

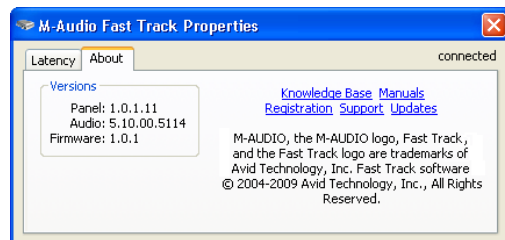


This page allows you to choose a sample bit depth of 16-bit or 24-bit. The default sample bit depth is 24-bit. On Windows systems, the sample bit depth is normally adjusted within Pro Tools SE.

 For more information, see “Sample Rate and Bit Depth” on page 18.

---

## About Tab (All Systems)



This page contains information about your hardware and current driver versions. These details are helpful should you ever have to contact technical support. Clicking the links takes you to useful pages on the Avid website.

## chapter 5

# Using Recording Studio

## Launching Pro Tools SE

The first step in beginning a Pro Tools project is working with a session. Pro Tools provides a Quick Start dialog on launch that lets you quickly and easily work with session templates, listen to demo songs and view tutorials.

### To launch Pro Tools SE and open a session:

1 Use the Pro Tools SE icon to launch the program:

- **Mac** Click on the Pro Tools SE icon in the Dock (or double-click the icon in the Pro Tools folder inside the Digidesign folder).
- **Windows** Click the Start button and locate the Pro Tools SE icon (or double-click the icon in the Pro Tools folder inside the Digidesign folder).



Pro Tools SE Icon

2 Use the Quick Start dialog to do one of the following:

- Create a session from templates.
- Listen to demo songs (lets you verify sound). See “Checking Your Signal Path” on page 10.

- Open any other session on your system.
- Open and view tutorials.



*The Pro Tools SE tutorials can be accessed via the Help menu at any time.*

## Creating a Session From a Template

### To create a new session from a template:

1 Select the default New Session button.



Pro Tools SE Quick Start Dialog - New Session

- 2 Select any session template from the list.
- 3 Click the Choose to open the template.
- 4 In the Save As dialog, name the session, choose where you want to save the session, and click Save.

---

## Recording Audio Tracks

This section shows you how to record audio tracks in Pro Tools SE.

### To record using an audio track:

**1** If you are going to record using a microphone, turn the Microphone Gain knob all the way down. If you are going to use the Guitar input to record an instrument, turn the Guitar Gain knob all the way down.

**2** Connect a microphone or instrument to your Fast Track interface:

- **Microphone** Connect your microphone to the Microphone input. If the microphone requires phantom power, enable it using the back-panel Phantom Power 48V switch.


**⚠** *Although phantom power can be used safely with most microphones, it may damage some ribbon microphones. Always turn off phantom power and wait at least ten seconds before connecting a ribbon microphone.*

*Refer to the documentation for your microphone for more information about its power requirements.*

- **Instrument** Connect an electric guitar, bass, or other instrument to the Guitar input.

**💡** *To achieve the best signal-to-noise ratio, turn the Gain knob for the input you are not using all the way down.*

**3** Press the Direct Monitor button for low-latency monitoring, if required.

 *For more information, see “” on page 17.*

**4** Sing, or play your instrument at the loudest level you expect to reach during your recording while slowly increasing the appropriate input gain until the red clip indicator begins to illuminate.

**5** While continuing to sing or play, turn the knob counter-clockwise until the clip indicator no longer illuminates.

**6** Choose an Audio track by clicking on an appropriate track name, such as “Audio 1” on the left side of the Pro Tools SE Edit window.

**💡** *To create a track, go to the Track menu and click Track > New and choose Audio track.*



**Audio Track**

**7** Click on the Input Selector (In) to the left of the track name, and choose the appropriate input source. Choose “Input 1” for the Microphone input or “Input 2” for the Instrument input.



**Input Selector**

**8** Click the Mute button for the track to prevent it from sending the input signal to the output of Fast Track.



**Track Mute Button**

**9** Switch the track to record mode by clicking its Record Enable button.



#### **Track Record Enable Button and Fader in Record Mode**

**10** Continue singing or playing, and if the level meter for the track is in the red, lower the recording level using the appropriate Gain knob.

**⚠** *Raising or lowering the on-screen Track fader will not affect the input level, as it is set up to only control the playback volume for the track.*

**11** Using the on-screen transport controls, Record Arm Pro Tools SE by clicking the Record button.



#### **Record Button**

**12** Begin recording your performance by clicking the Play button.



#### **Play Button**

**13** Click the Stop button when you have finished recording.



#### **Stop Button**

**14** Switch the track out of record mode by clicking its Record Enable button.

**15** Click the Mute button for the track, so that you can hear your recording during playback.

**⚠** *Do not forget to save your work.*

---

## **Adjusting the Output Level**

The volume of the sound sent from Fast Track to your headphones, powered monitors, stereo power amplifier, or mixer is adjusted using the Output knob.

It is important to remember that connecting your headphones will disable the Line Outputs.

**💡** *When recording with a microphone while monitoring with speakers, you should turn the Output Gain all the way down in the Software Control Panel. This prevents the microphone from picking up the output from Pro Tools SE if the microphone is in the same room as your speakers.*

**⚠** *Placing a microphone too close to your speakers with the Output Gain set to high levels will result in feedback which could seriously damage your hearing and/or equipment.*

---

## Direct Monitoring

When recording an audio signal, there is often a slight delay before it reaches the outputs of Pro Tools SE and Fast Track. This delay, called latency, is caused by the computer processing required to convert and record audio. Since this delay can be distracting, Fast Track provides a direct monitoring path from the inputs to the outputs, which is activated by pressing the Direct Monitor button.

When the Direct Monitor button is pressed, the input signal is mixed with the output signal from Pro Tools SE, and routed directly to the Line and Headphone Outputs. This allows you to hear the “live” inputs without latency and has no effect on what is being recorded.

When using the Direct Monitor feature you should click the Mute button on the track you are recording on, as this prevents Pro Tools SE from sending the recorded signal (post-disk) to the Line and Headphone outputs, causing “double-monitoring.”

**⚠** *Once you have finished recording your performance, click the Mute button again to hear the performance before clicking the Play button.*

When “double-monitoring” occurs there will be an increase in volume and an undesirable “phasing” sound. For more details about its monitoring function refer to your music software documentation.

---

## Sample Rate and Bit Depth

Fast Track can operate at two sample rates (44.1 or 48 kHz) and two different bit depths (16- or 24-bit) to accommodate a variety of projects. You should decide on a sample rate and bit depth for your project before recording, to maximize fidelity and avoid time consuming format conversions.

These settings can be changed in the Software Control Panel, as described in Chapter 4, “The Software Control Panel.”

The following guidelines should help you choose appropriate settings for your recording:

**⚠** *It is not possible to raise the fidelity of previously recorded audio by increasing its bit depth or sample rate.*

*Always use the highest possible settings that are appropriate for your project.*

## Music Projects

If the final mix will be played back on CD, or in MP3 format, a resolution of 24-bits with a sample rate of 44.1 kHz is recommended.

**⚠** *The final output file will have to be converted to 16-bit/44.1 kHz for playback on CD and some audio player applications.*

## Video Projects

If the final mix is intended for DVD, film or TV, a resolution of 24-bits with a sample rate of 48 kHz is recommended.

---

## Opening a Recent Session

**To open a recent session:**

- 1 Launch Pro Tools SE.
- 2 When the Pro Tools SE Quick Start dialog appears click the Open Session button.



*Pro Tools SE Quick Start Dialog - Open Session*

- 3 From the list of recent session templates, select the one you want. (Or, select Open Other... to select other recent sessions.)
- 4 Click to open the session.





## appendix a

# Additional Information and Support

---

### Pro Tools SE

Complete documentation for Pro Tools SE can be found in the Pro Tools SE Help menu.

Additional information can be found in the Interactive Projects Guide and the Interactive Projects Tutorials, which you can access by clicking the Tutorials button in the upper right of the Pro Tool SE Quick Start dialog, or by going to the Help menu.

---

### M-Audio Drivers

Should you experience any performance issues with your M-Audio hardware, please confirm that you have installed the latest M-Audio drivers. A complete list of current drivers and system requirements can be found at [www.avid.com/support](http://www.avid.com/support).

---

### Before Updating Your System

Please check [www.avid.com/support](http://www.avid.com/support) for a compatible driver before installing Apple or Microsoft operating system updates.

Before new device drivers are released, they are tested for use with operating system versions that are available at that time. When updates for an operating system are released, all M-Audio device drivers have to be re-tested and possibly updated to ensure proper operation.

We recommend not installing operating system updates until a driver has been posted to the Avid website for that specific operating system.

The Avid website ([www.avid.com](http://www.avid.com)) contains the latest drivers and program updates, as well as useful links to news stories, FAQs, and technical support. We recommend checking this site regularly to ensure you have the latest drivers and most up-to-date information about this product.



# Compliance Information

---

## Environmental Compliance

### Disposal of Waste Equipment by Users in the European Union



This symbol on the product or its packaging indicates that this product must not be disposed of with other waste. Instead, it is your responsibility to dispose of your waste equipment by handing it over to a designated collection point for the recycling of waste electrical and electronic equipment. The separate collection and recycling of your waste equipment at the time of disposal will help conserve natural resources and ensure that it is recycled in a manner that protects human health and the environment. For more information about where you can drop off your waste equipment for recycling, please contact your local city recycling office or the dealer from whom you purchased the product.

### Proposition 65 Warning

**⚠** *This product contains chemicals, including lead, known to the State of California to cause cancer and birth defects or other reproductive harm. Wash hands after handling.*

### Perchlorate Notice

This product may contain a lithium coin battery. The State of California requires the following disclosure statement: "Perchlorate Material – special handling may apply, See [www.dtsc.ca.gov/hazardouswaste/perchlorate](http://www.dtsc.ca.gov/hazardouswaste/perchlorate)."

### Recycling Notice



---

## EMC (Electromagnetic Compliance)

Avid declares that this product complies with the following standards regulating emissions and immunity:

- FCC Part 15 Class A
- EN55022 Class A
- EN55024
- AS/NZS CISPR 22 Class A
- CISPR 22 Class A

## FCC Compliance for United States

### Radio and Television Interference

This equipment has been tested and found to comply with the limits for a Class A digital device, pursuant to Part 15 of the FCC Rules.

#### DECLARATION OF CONFORMITY

We, Avid, 2001 Junipero Serra Boulevard  
Daly City, CA 94014-3886, USA  
650-731-6300

declare under our sole responsibility that the product  
Fast Track

complies with Part 15 of FCC Rules.

Operation is subject to the following two conditions:

- (1) this device may not cause harmful interference, and
- (2) this device must accept any interference received,  
including interference that may cause undesired operation.

#### Communication Statement

NOTE: This equipment has been tested and found to comply with the limits for a Class A digital device, pursuant to Part 15 of the FCC Rules. These limits are designed to provide reasonable protection against harmful interference in a residential installation. This equipment generates, uses, and can radiate radio frequency energy and, if not installed and used in accordance with the instructions, may cause harmful interference to radio communications. However, there is no guarantee that interference will not occur in a particular installation. If this equipment does cause harmful interference to radio or television reception, which can be determined by turning the equipment off and on, the user is encouraged to try and correct the interference by one or more of the following measures:

- Reorient or locate the receiving antenna.
- Increase the separation between the equipment and receiver.
- Connect the equipment into an outlet on a circuit different from that to which the receiver is connected.
- Consult the dealer or an experienced radio/TV technician for help.

Any modifications to the unit, unless expressly approved by Avid, could void the user's authority to operate the equipment.

## Australian Compliance



## Canadian Compliance

This Class A digital apparatus complies with Canadian ICES-003

Cet appareil numérique de la classe A est conforme à la norme NMB-003 du Canada

## CE Compliance

### (EMC and Safety)



Avid is authorized to apply the CE (Conformité Européenne) mark on this compliant equipment thereby declaring conformity to EMC Directive 2004/108/EC and Low Voltage Directive 2006/95/EC.

---

## Safety Compliance

### Safety Statement

This equipment has been tested to comply with USA and Canadian safety certification in accordance with the specifications of UL Standards: UL 60950-1, 1st edition/ IEC 60950-1, 1st edition and Canadian CAN/CSA-C22.2 No. 60950-1, Avid Inc., has been authorized to apply the appropriate UL & CUL mark on its compliant equipment.

### Warning



## Important Safety Instructions

- 1) Read these instructions.
- 2) Keep these instructions.
- 3) Heed all warnings.
- 4) Follow all instructions.
- 5) Do not use this equipment near water.
- 6) Clean only with dry cloth.
- 7) Do not block any ventilation openings. Install in accordance with the manufacturer's instructions.
- 8) Do not install near any heat sources such as radiators, heat registers, stoves, or other equipment (including amplifiers) that produce heat.
- 9) Do not defeat the safety purpose of the polarized or grounding-type plug. A polarized plug has two blades with one wider than the other. A grounding type plug has two blades and a third grounding prong. The wide blade or the third prong are provided for your safety. If the provided plug does not fit into your outlet, consult an electrician for replacement of the obsolete outlet.
- 10) Protect power cords from being walked on or pinched particularly at plugs, convenience receptacles, and the point where they exit from the equipment.
- 11) Only use attachments/accessories specified by the manufacturer.

12) For products that are not rack-mountable: Use only with a cart, stand, tripod, bracket, or table specified by the manufacturer, or sold with the equipment. When a cart is used, use caution when moving the cart/equipment combination to avoid injury from tip-over.

13) Unplug this equipment during lightning storms or when unused for long periods of time.

14) Refer all servicing to qualified service personnel. Servicing is required when the equipment has been damaged in any way, such as power-supply cord or plug is damaged, liquid has been spilled or objects have fallen into the equipment, the equipment has been exposed to rain or moisture, does not operate normally, or has been dropped.

15) For products that are a Mains powered device: The equipment shall not be exposed to dripping or splashing and no objects filled with liquids (such as vases) shall be placed on the equipment.

**Warning!** To reduce the risk of fire or electric shock, do not expose this equipment to rain or moisture.

16) For products containing a lithium battery:  
**CAUTION!** Danger of explosion if battery is incorrectly replaced. Replace only with the same or equivalent type.

17) The equipment shall be used at a maximum ambient temperature of 40° C.

## Japan PSE Safety





**Avid**  
5795 Martin Road  
Irwindale, CA 91706-6211 USA

**Technical Support (USA)**  
Visit the Online Support Center at  
[www.avid.com/support](http://www.avid.com/support)

**Product Information**  
For company and product information,  
visit us on the web at [www.avid.com](http://www.avid.com)