



SYSTEM_PRO

Vacuum Cleaner Owner's Guide

Household Type

Model SP6952

IMPORTANT

Do **not** return this product to the store. Call 1-800-800-8975* or visit our web site, www.sanitairevac.com for any of the following:

- assembly problems
- replacement of broken or missing items
- to order replacement parts and accessories
- to view the repair parts list
- to locate the nearest Sanitaire Warranty Station

*En Mexico llame al 5670-6169.



PLEASE RETAIN

We suggest you record the model, type and serial numbers below. They are located on the silver rating plate on your cleaner. For prompt and complete service information, always refer to these numbers when inquiring about service.

Model & Type _____

Serial No. _____

It is also important to keep your receipt as proof of date of purchase.

www.sanitairevac.com

Index

Service Information	2
Important Safeguards	2
Identify Parts	3
How to Use	3
Accessories	3
How to Change Dustbag	4
How to Change Filters	4
Powerhead Floor Nozzle Maintenance	4
Maintenance and Cleaning	5
Warranty	5

GENERAL INFORMATION

To reduce the risk of electric shock, this appliance has a polarized plug (one blade is wider than the other). The plug will fit in a polarized outlet only one way. If the plug does not fit fully in the outlet, reverse the plug. If it still does not fit, contact a qualified electrician to install the proper outlet. Do not change the plug in any way. The bag may have come dislodged in shipping.

Check the bag to insure proper seating before attempting to use the cleaner. Do not operate the cleaner without a dust bag or the filters. Damage may result to the motor (see Dust Bag and Filter).

The cleaner is designed to pick up dirt and dust particles. Avoid picking up hard or sharp objects with the cleaner to avoid bag breakage, hose clogging, or possible motor damage.

Service Information

The instructions in this booklet serve as a guide to routine maintenance. If additional service is required, telephone toll free:

USA: 1-800-800-8975

Mexico: 5670-6169

Canada: 1-800-800-8975

If you prefer, you can write to Electrolux Home Care Products North America, Service Division, 807 North Main Street, Bloomington, Illinois 61701, USA. In Canada write to Electrolux Home Care Products North America, 866 Lings Drive, Cambridge, Ontario N3H 2N7. Refer to The Sanitaire Limited Warranty for complete service information.



DO NOT OIL the motors (in the canister and the motorized nozzle) or the brush roll at any time. The bearings are permanently lubricated and sealed.

IMPORTANT SAFEGUARDS

When using an electrical appliance, basic precautions should always be followed, including the following:

**READ ALL INSTRUCTIONS
BEFORE USING THIS VACUUM CLEANER.**

WARNING

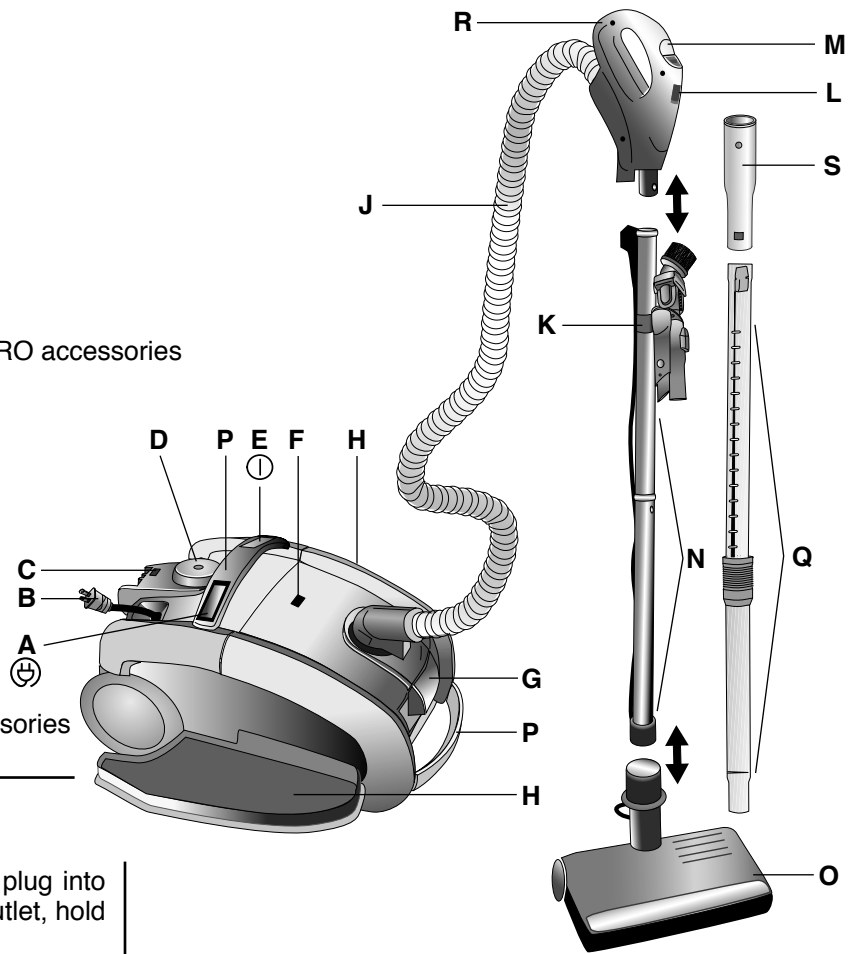
To reduce the risk of fire, electric shock, or injury:

- Do not use outdoors or on wet surfaces.
- **Do not leave vacuum cleaner when plugged in.** Turn off the switch and unplug the electrical cord when not in use and before servicing.
- Do not allow to be used as a toy. Close attention is necessary when used by or near children.
- Use only as described in this manual. Use only manufacturer's recommended attachments.
- Do not use with damaged cord or plug. If vacuum cleaner is not working as it should, has been dropped, damaged, left outdoors, or dropped into water, return it to a service center before using.
- Do not pull or carry by cord, use cord as a handle, close a door on cord, or pull cord around sharp edges or corners. Do not run vacuum cleaner over cord. Keep cord away from heated surfaces.
- Hold plug when rewinding onto cord reel. Do not allow plug to whip when rewinding.
- Do not use extension cords or outlets with inadequate current carrying capacity.
- Turn off all controls before unplugging.
- Always turn off this appliance before connecting or disconnecting either hose or motorized nozzle.
- Do not unplug by pulling on cord. To unplug, grasp the plug, not the cord.
- The hose contains electrical wires. Do not use if damaged, cut or punctured. Avoid picking up sharp objects.
- Do not handle plug or vacuum cleaner with wet hands.
- Do not put any object into openings. Do not use with any opening blocked; keep free of dust, lint, hair, and anything that may reduce airflow.
- This vacuum cleaner creates suction and contains a revolving brush roll. Keep hair, loose clothing, fingers, and all parts of body away from openings and moving parts.
- Do not pick up anything that is burning or smoking, such as cigarettes, matches, or hot ashes.
- Do not use without dust bag in place.
- Belt pulleys can become hot during normal use. To prevent burns, avoid touching the belt pulley when servicing the drive belt.
- Use extra care when cleaning on stairs.
- Do not use to pick up flammable or combustible liquids such as gasoline, or use in areas where they may be present.
- Store your cleaner in a cool, dry area.
- Keep your work area well lighted.
- Unplug electrical appliances before vacuuming them.

SAVE THESE INSTRUCTIONS

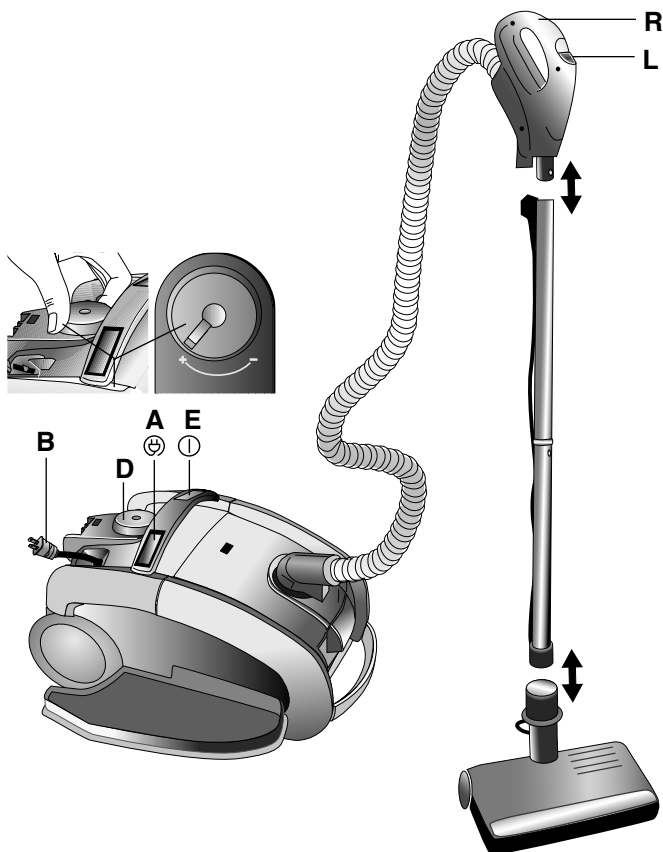
Identify Parts

- A Cord rewind button
- B Cord
- C HEPA Filter change indicator
- D Suction power regulator
- E On/Off button
- F Bag change indicator
- G Bag cover latch
- H Right/Left: Retainer lid for optional SYSTEM_PRO accessories
- J Hose
- K Tool caddy with accessories
- L Suction regulator
- M Brushroll On/Off button
- N Chrome wand with connectors (quick release)
- O Powerhead floor nozzle with quick release
- P Carrying handles
- Q Telescopic wand
- R Handle
- S Adapter for telescopic wand and optional accessories



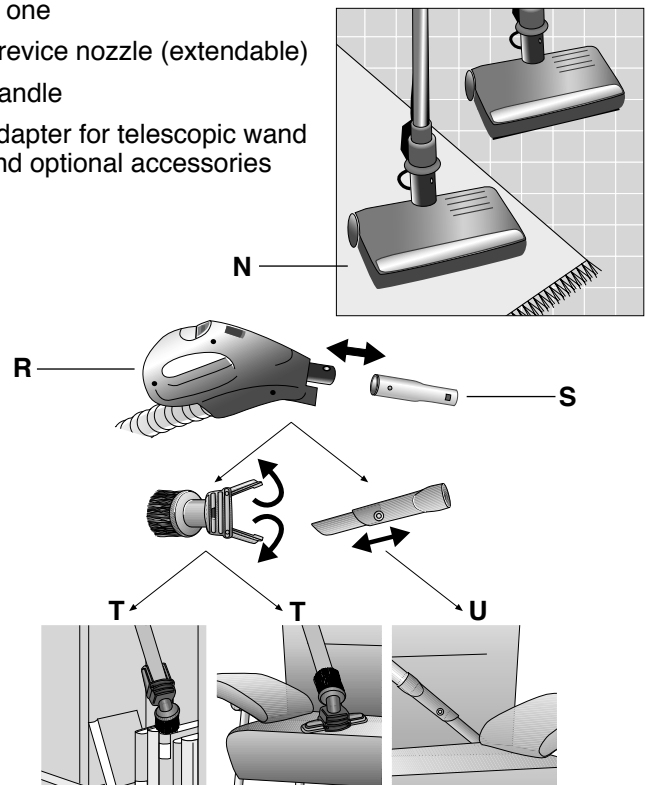
How to Use

- Pull out and fully extend electrical cord **B** and plug into outlet. (To retract electrical cord, unplug from outlet, hold plug firmly and press button **A**).
- Turn on/off by pressing button **E**.
- Set suction power using suction power regulator **D**. The suction can also be reduced by adjusting the suction regulator **L** on handle **R** in order to vary the amount of strength required to push the vacuum cleaner.



Accessories

- N** Powerhead floor nozzle: turn on for carpets, off for bare floors
- T** Combination nozzle: furniture brush and upholstery nozzle in one
- U** Crevice nozzle (extendable)
- R** Handle
- S** Adapter for telescopic wand and optional accessories



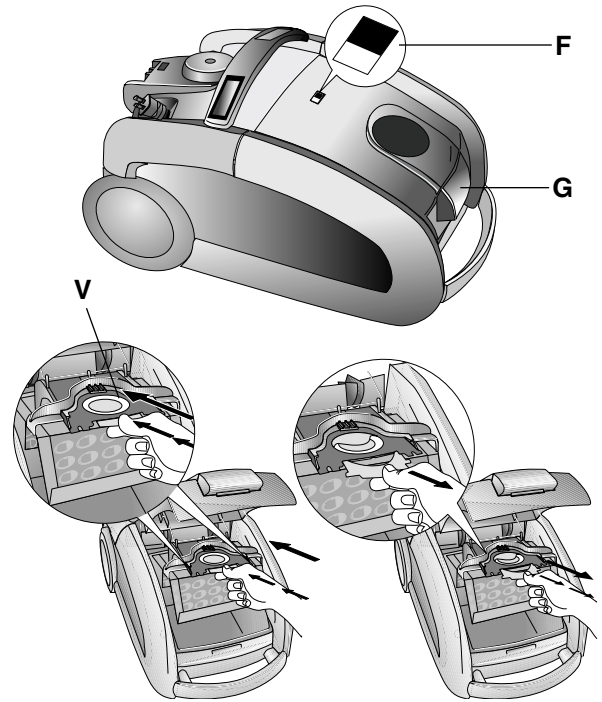
How to Change Dust Bag and Motor Filter

CAUTION: Turn off the switch and unplug the electrical cord before servicing the cleaner. Never operate the vacuum cleaner without the dust bag in place.

NOTE: When cleaning new carpet for the first time, bag will fill quickly. Check often.

Change dust bag **V** when display **F** turns orange (can be checked with the appliance operating at maximum suction and with the nozzle raised from the floor). A change may be necessary even if the bag does not appear to be full. Fine dust can block the pores and reduce the suction power of the appliance.

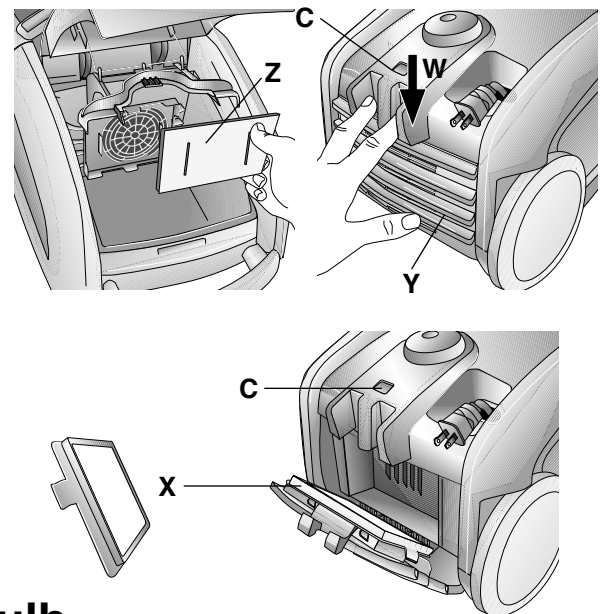
- Remove hose and open the bag cover lid by pulling release catch **G**.
- Remove dust bag **V** by pulling on the sealing tab.
- Push new dust bag into the retainer until it clicks into place. Take care when closing the dust chamber lid that the dust bag is completely inside the dust chamber border. The dust chamber lid will not close unless a dust bag has been inserted. Please do not use force!
- Change motor filter **Z** if display **F** is still orange after the dust bag has been changed or if the suction power is significantly reduced although the dust bag has little in it.
- Replace hose.



How to Clean Washable HEPA Filter

CAUTION: Turn off the switch and unplug the electrical cord before servicing the cleaner. Never operate the vacuum cleaner without the filter in place.

- Clean filter **X** if display **C** is lighted or if the suction power is significantly reduced.
- Press filter cover button **W** and open filter cover **Y**.
- Cleaning the washable HEPA filter:
 - Wash HEPA filter when indicator **C** is lighted.
 - Open and remove the lid **Y**, then remove the filter **X**.
 - Rinse the inside (dirty side) of the filter with warm tap water. Tap the filter frame to remove excess water. Repeat four times and allow to dry.
- NOTE: Do not use cleaning agents and avoid touching the delicate filter surfaces.**
- Replace the filter and lid.



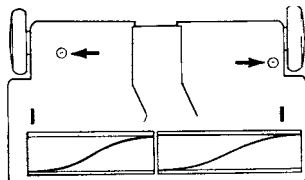
How to Replace Worn Belt or Light Bulb

CAUTION: Disconnect power cord and wands from electrical hose before replacing belt or bulb. Belt pulleys can become hot during normal use. To prevent burns, avoid touching the belt pulley when servicing the drive belt.

1. Remove two screws from bottom side. To turn over, grasp hood near handle socket and lift forward.

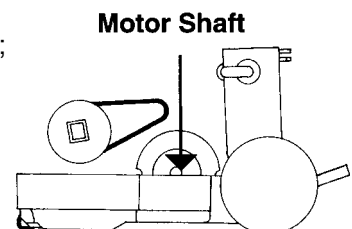
Replace headlight bulb, if necessary. Support socket with one hand and push light bulb into socket; turn to release. Place new light bulb into socket; turn to secure. Push light bulb and socket back so bulb will not touch lens cover. **Use GENUINE SANITAIRE replacement bulb, 59224.**

Continue to step 2 to change belt. Skip to step 7 and 8 to replace hood on motorized nozzle.



2. Remove two screws located in front of the light bulb and lift up to remove the brush roll cover.

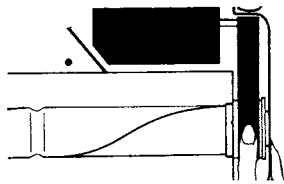
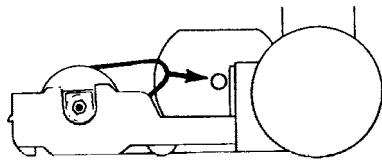
3. Lift out brush roll; replace new belt around brush roll shaft.



How to Replace Worn Belt or Light Bulb

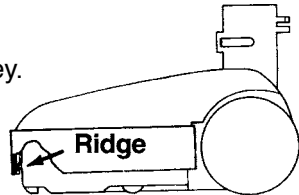
(continued)

- Return brush roll into base.



Brush Roll Pulley

- Rotate belt onto motor pulley.
- Replace brush roll cover.



- Tilt cover over ridge and push down.
- Secure with screws on underside (refer to 1).

Use **GENUINE SANITAIRE** replacement belt, 52201C.

Maintenance and Cleaning

For maintenance or cleaning, switch off the vacuum and unplug it from the outlet. As needed, wipe the housing and the bag cover lid with a damp cloth and then dry. Do not use any cleansers or any solvents. Occasionally vacuum the floor nozzle and the accessory brushes with the crevice nozzle.

What to do, if ...

...it is difficult to push the nozzle: Reduce suction power (depending on the type of carpet). This will not noticeably reduce the cleaning efficiency.

...the motor thermal cutoff has tripped: The motor can overheat due to a full dust bag or if the accessory is blocked. Switch off the vacuum, unplug from the outlet, and let the motor cool down. Check dustbag, suction tube and suction hose; remove any blockage. The vacuum can be switched on again after approximately 30 minutes.

...the house fuse has blown: The house fuse can be blown if other electric appliances with a high power consumption are used at the same time and on the same circuit as the vacuum cleaner. If this is the case, plug cord into a different outlet.

...the cord does not retract fully: The cord is caught up on the cord drum. Pull the cord out a little and press the cord rewind button again.

...the dust chamber lid will not close: Check that the dustbag has been inserted. If it has, check that the dustbag has clicked into position.

Protecting the environment

Appliance packaging: We recommend keeping the packaging for the duration of the guarantee so that the appliance can be transported safely.

Recycling the appliance at the end of its life: The plastic components all carry a material identification marking so they can be recycled at the end of the life of the vacuum.

THE SANITAIRE LIMITED WARRANTY

What This Warranty Covers

Your Sanitaire cleaner is warranted to be free from all defects in material and workmanship in normal household use for a period of two years. The warranty is granted only to the original purchaser and members of his or her immediate household. The warranty is subject to the following provisions.

What This Warranty Does Not Cover

- Parts of the cleaner that require replacement under normal use, such as disposable dust bags, filters, drive belts, light bulbs, and brush roll bristles.
- Damages or malfunctions caused by negligence, abuse, or use not in accordance with the Owner's Guide.
- Defects or damages caused by unauthorized service or the use of other than Genuine Eureka/Sanitaire parts.

What Electrolux Home Care Products North America Will Do

Electrolux Home Care Products North America will, at its option, repair or replace a defective cleaner or cleaner part that is covered by this warranty. As a matter of warranty policy, Electrolux Home Care Products North America will not refund the consumer's purchase price.

Extended Warranty for Upright Cleaner (Only)

The base of the Sanitaire Upright cleaner is warranted for five years from the original date of purchase.

Extended Warranty for SYSTEM_PRO Canisters

The motor for SYSTEM_PRO canister cleaners is warranted for five years from the original date of purchase.

Warranty Registration

Please fill out and return the warranty registration card accompanying your cleaner.

Obtaining Warranty Service

To obtain warranty service you must return the defective cleaner or cleaner part along with proof of purchase to any Sanitaire Authorized Warranty Station.

You will find the nearest location in the Yellow Pages, under "Vacuum Cleaners—Service and Repair." Be certain that the Warranty Station is "Sanitaire Authorized."

For the location of the nearest Sanitaire Authorized Warranty Station or for service information, telephone toll free:

USA: 1-800-800-8975

Mexico: 5670-6169

Canada: 1-800-800-8975

If you prefer, you can write to Electrolux Home Care Products North America, Service Division, 807 North Main Street, Bloomington, Illinois 61701. In Canada write to Electrolux Home Care Products North America, 866 Langs Drive, Cambridge, Ontario N3H 2N7.

If it is necessary to ship the cleaner outside your community to obtain warranty repair, you must pay the shipping charges to the Sanitaire Authorized Warranty Station. Return shipping charges will be paid by the Warranty Station. When returning parts for repair, please include the model, type, and serial numbers from the data plate on the cleaner.

Further Limitations and Exclusions

Any warranty that may be implied in connection with your purchase or use of the cleaner, including any warranty of Merchantability or any warranty for Fitness For A Particular Purpose is limited to the duration of this warranty. Some states do not allow limitations on how long an implied warranty lasts, so the above limitations may not apply to you.

Your relief for the breach of this warranty is limited to the relief expressly provided above. In no event shall Electrolux be liable for any consequential or incidental damages you may incur in connection with your purchase or use of the cleaner. Some states do not allow the exclusion or limitation of incidental or consequential damages, so the above limitation or exclusion may not apply to you.

This warranty gives you specific legal rights. You may also have other rights which vary by state.



Questions & Answers about Genuine Eureka/Sanitaire Products

Q: Why should I use only Genuine Eureka/Sanitaire paper bags, belts, and parts in my Eureka/Sanitaire vacuum cleaner?

A: Using Genuine Sanitaire Products, which are made to our exacting specifications and engineered with emphasis on quality, performance, and customer satisfaction, ensures the long life and cleaning efficiency of your vacuum cleaner. Overall, this saves you money and helps to keep your home clean.

Q: How can I be sure I am using only Genuine Eureka/Sanitaire products in my vacuum cleaner?

A: Typically, packaged products and paper bags can be identified by a Eureka or Sanitaire logo. For further identification assistance, you may call our toll-free number, 1-800-800-8975, for the location of a nearby Eureka/Sanitaire Authorized Warranty Station.

Q: Are there any differences between "made to fit" or "imitation" and Genuine Eureka/Sanitaire paper bags, belts, and parts?

A: Yes, there are some very important differences in materials, quality, and reliability. Many customers have mistakenly purchased "imitation" paper bags and parts while thinking they purchased genuine. Unfortunately, many of these customers discovered the differences after they experienced related difficulties.

For Genuine Sanitaire Value, Accept No Imitations!



ELECTROLUX HOME CARE PRODUCTS NORTH AMERICA
Bloomington, Illinois 61701