

EYEZONE B1080P-4

User Manual



FCC Notices

It's herewith confirmed to comply with the requirements of FCC Part 15 Rules. Operation is subject to the following two conditions:

- This device may not cause harmful interference.
- This device must accept any interference received, including interference that may cause undesired operation.

Note: This equipment has been tested and found to comply with the limits for a Class B digital device, pursuant to part 15 of the FCC Rules. These limits are designed to provide reasonable protection against harmful interference when the equipment is operated in a residential installation. This equipment generated uses and can radiate radio frequency energy and if not installed and used in accordance with the instruction manual may cause harmful interference to radio communications. However, there is no guarantee that interference will not occur in a particular installation. If this equipment does cause harmful interference to radio of television reception, which can be determined by turning the equipment off or on, the user is encouraged to try to correct the interference by one or more of the following measures:

- Reorient or relocate the receiving antenna.
- Increase the separation between the equipment and receiver.
- Connect the equipment into an outlet on a circuit different from that to which the receiver is connected.
- Consult the dealer or an experienced radio TV technician for help.

CE Declaration

This device complies with CE class B.

EN55022	IEC 61000-4-4
EN61000-3-2	IEC 61000-4-5
EN61000-3-3	IEC 61000-4-6
EN55024	IEC 61000-4-8
IEC 61000-4-2	IEC 61000-4-11
IEC 61000-4-3	

Printed in Taiwan R.O.C.

All contents are subject to change without notice.

All trademarks are the property of their respective owner.



Feb 25, 09

F 3 4 4 8 1 1 8

CONTENTS

1. Package Contents.....	4
2. Introduction.....	4
3. Features.....	4
4. Hardware Overview.....	6
5. Remote Control.....	7
5.1 Entering Text or IP Address.....	7
6. Start the B1080P-4.....	8
7. Setting Up.....	9
7.1 Network Setup.....	9
7.2 FTP Setup.....	11
7.3 Video Setup.....	13
7.4 Other Setup.....	14
8. Using the B1080P-4.....	16
8.1 Play Media Files on the CF Card.....	16
8.2 Multiple Display Zones.....	19
8.3 Live Video Display.....	20
8.4 Download Function.....	22
8.5 Play the Media Files on the PC.....	25
8.6 Download/ Upload Media Files.....	28
8.7 RS-232 Function.....	31
9. Http Command Function.....	32
9.1 Player Control.....	33
9.2 Network Setup.....	35
9.3 Timer Setup.....	36
10. Schedule Function.....	37
10.1 Install the Schedule Software.....	37
10.2 Set Up the Schedule Software.....	38
10.3 Apply the Schedule on the B1080P-4.....	42
11. Optional Auxiliary Equipment.....	43
11.1 Play-Button Box (Eyezone BB).....	43
11.2 IR Cable.....	43
11.3 PIR Sensor.....	44
11.4 Touch-Sensor Buttons.....	44
12. Troubleshooting.....	46

1. PACKAGE CONTENTS

1. B1080P-4
2. Remote Control
3. Audio Cable
4. S-Video Cable
5. HDMI Cable (optional)
6. Power Adapter
7. User Manual
8. Schedule Software



2. INTRODUCTION

The Eyezone B1080P-4 is a digital media player that plays HD WMV9 and WMA files from CF memory card without a computer. The Eyezone B1080P-4 supports High Definition movie hardware decode acceleration, presents for you the smoother and clearer picture, it supports high resolution video output such as 1080P / 1080i / 720P for movie theater quality video on a big screen. By connecting to S-Video, Y.Pb.Pr, VGA (resolution up to 1360 x 768), HDMI (1920 x 1080P) and Audio, you can play media files on any display device.

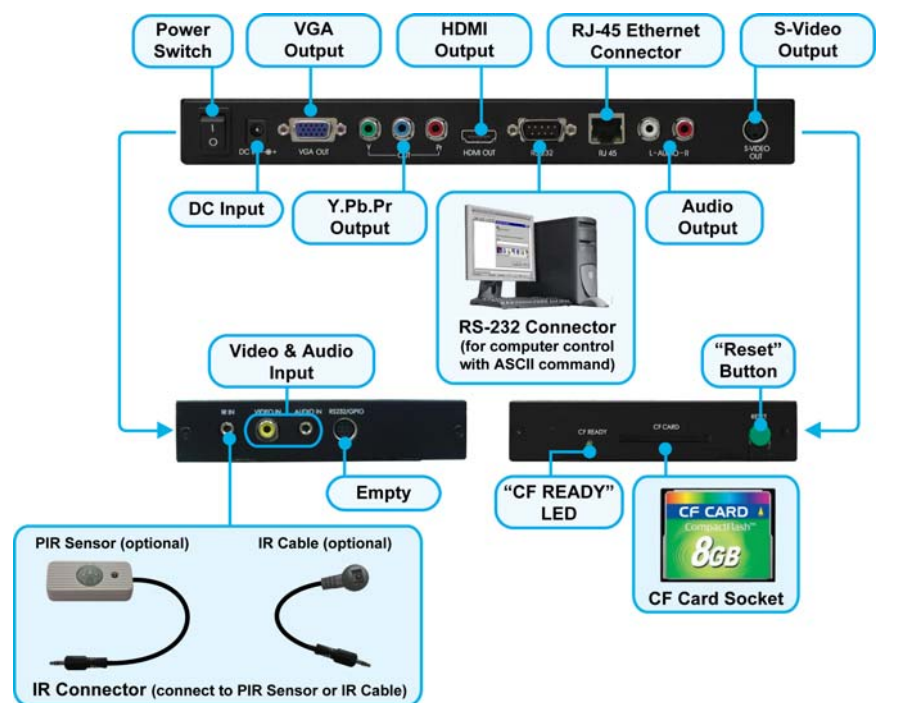
What's more, the Eyezone B1080P-4 supports multiple display zones, you can play movie, picture and scrolling text on the screen simultaneously. The B1080P-4 supports live video display with the input from TV box, DVD player or camera. The scrolling text displays an animated text message on a bar on bottom of your screen, the information of your product can catch the customer's eyes easily, and the text color can be changed (white, yellow, green or rotation).

The Eyezone B1080P-4 can connect to a wired network at speed up to 100Mbps. This function provides you with maximum throughput for sharing and transferring digital media.

3. FEATURES

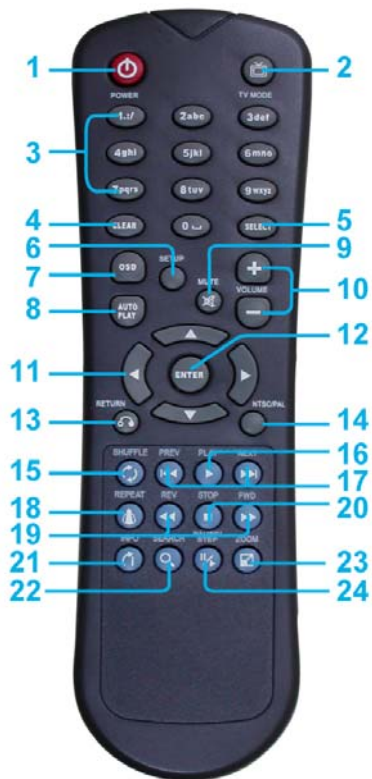
- Supports multiple file formats: HD WMV9 and WMA.
- Supports real time A/V input to display live videos from display devices.
- Supports S-Video, Y.Pb.Pr, HDMI, VGA and Audio output.
- HD Y.Pb.Pr output supports resolution: NTSC Mode(60Hz): 480P/ 720P/ 1080i.
PAL Mode(50Hz): 576P/ 720P/ 1080i.
- HDMI Output: 480P/ 720P/ 1080i/ 1080P.
- VGA output supports resolution: 640x480/ 800x600/ 1024x768/ 1280x1024/ 1360x768.
- Supports RS-232 port for computer control with ASCII command (play, stop, pause...etc).
- **Supports Multiple Display Zones: Displays the movie, picture (supports png format/ size: 150x400/ 96DPI) and scrolling text on the screen simultaneously.**
 - **Supports two display modes:**
 - Mode 1: Display live videos (or stored videos) with scrolling text.
 - Mode 2: Display live videos (or stored videos), pictures and scrolling text simultaneously.
 - **The picture can be repositioned to left or right of the screen.**
 - **The display speed of scrolling text can be adjusted, and scrolling text supports multi language (English/ Latin/ Japanese).**
- **Touch-Sensor Buttons Function (optional)**
 - Press one of the touch-sensor buttons, the B1080P-4 will play the corresponding file automatically.
 - Used with various operating environment (glass, plastics and acrylic material, except metal material), the thickness supports 3mm -5mm, and it can be customized to 5cm for OEM project.
- **PIR Sensor Function (optional)**
 - After sensing approaching subjects, the Eyezone B1080P-4 will play the files automatically.
 - Sensing distance is up to 3 meters with an angle of 45° .
- **Schedule Function:** The B1080P-4 will auto play the designated file at the designated date.
- Connect using an Ethernet network cable at up to 100Mbps.
- Supports CF memory cards. (Suggest using the high speed (150X) CF card)
- **Supports HTTP command function.**
- **Exports the Configuration Value:** You can export the configuration value to the CF card. The configuration can be modified on your PC, and can be applied to the B1080P-4 or others.
- **Compatible with Windows Media Player 11:** Play media files stored in a network computer.
- **Supports FTP Auto Download Function:** Connect to Remote FTP server and download data to the CF card automatically.
- **Supports Download Pause / Resume Function:** Continue unfinished downloads upon next session.
- Embedded FTP Server.
- Supports NTP Network (G.M.T) Timer.
- Supports Universal Plug and Play (UPnP) and DHCP.
- **Supports SLIDE SHOW Function(interval time with 10/ 15/ 30/ 60 seconds).**

4. HARDWARE OVERVIEW



- **Power Switch:** Toggle between main power on & off.
- **DC Input:** For the power adapter. (DC 12V / 1.5A)
- **VGA Output:** Connects to devices that support VGA input. (LCD · projector)
- **Y.Pb.Pr Output:** Connects to devices that support Y.Pb.Pr input. (HDTV · projector)
- **HDMI Output:** Connects to devices that support HDMI input.
- **RS-232 Connector:** Used for computer control with ASCII command.
- **RJ-45 Ethernet Connector:** Connects to router or PC by RJ-45 Cable.
- **Audio Output:** Connects to sound input. (HDTV with amplified speaker)
- **S-Video Output:** Connects to devices that support S-Video input. (HDTV · projector)
- **IR Input:** Connects to PIR Sensor (optional) or IR Cable (optional).
- **Video & Audio Input:** Connects to display device that support video & audio output. (TV Box, DVD Player or camera)
- **“CF READY” LED:** Steady green confirms that the CF card is inserted correctly.
- **CF Card Socket:** For CF memory card.
- **“RESET” Button:** To restart the B1080P-4.

5. REMOTE CONTROL



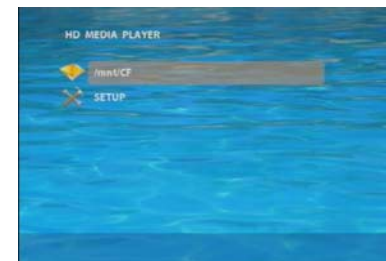
- 1 Power on/ off
- 2 Select the output mode
- 3 Numeric Key
- 4 Delete last entry
- 5 Select a function or to play the selected file
- 6 Open the setup menu Mute sound
- 7 OSD display function on/ off
- 8 Auto-play function on/ off
- 9 Mute sound
- 10 Volume up/ down
- 11 Move the cursor
- 12 Confirm the selection/ entry
- 13 Go back one layer
- 14 Select the TV type (NTSC/ PAL)
- 15 Shuffle on & off
- 16 Play the file selected
- 17 View the previous/ next file
- 18 Select the repeat mode
- 19 Rewind/ forward movie or music files
- 20 Stop playback
- 21 Show the information of the file selected
- 22 Search video (movie) timeframe
- 23 Zoom in/ out on the movie or picture
- 24 Pause the playback or play frame by frame

5.1 ENTERING TEXT OR IP ADDRESS

- Keys need to be pressed multiple times to enter the letter corresponding to that key.
For Example: To enter the letter “a”. You would press the button “2” twice.
- **Enter The IP Address**
For Example: To enter the IP address “192.168.100.100”.
Step 1: Press “1” once, then “1” is displayed, and the color of “1” is orange.
Step 2: When the color of “1” turns white, press “9” once, then “9” is displayed.
Step 3: Repeat steps 1 and 2 to enter and complete the IP address.

6. START THE B1080P-4

- **Power On**
 - Insert the CF memory card that has Picture, Music, Movie or WMV9 files.
 - Press the “POWER” button to power on the Eyezone B1080P-4, and then press the “TV MODE” button to select the output mode.
- **Status After Power On**
 - **Status 1:** If the “AUTOPLAY (Movie, Picture, MultiLayer or Video In)” function is enabled and there are media files on the CF card or the B1080P-4 is already connected to the display device, the Eyezone B1080P-4 will auto play media files or live video after power on.
 - **Status 2:** If the “AUTOPLAY” function is disabled, after power on the main menu will appear as shown in the following figure. There are two groups in the main menu (“/mnt/CF” and “SETUP”).



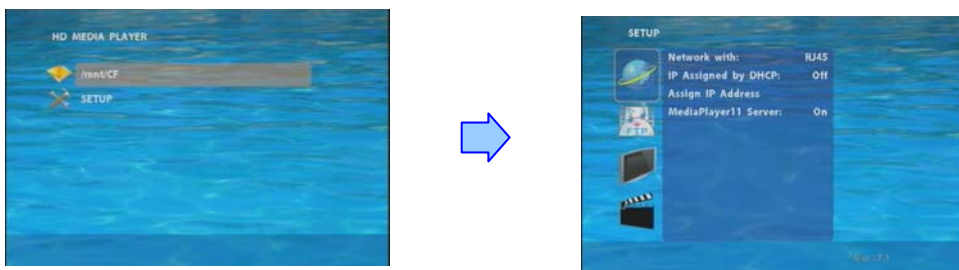
NOTE: The pop-up window that shows the IP address will appear later, if DHCP mode is selected when the Eyezone B1080P-4 is turned on.



- **Power Off:** Press the “POWER” button again to power off.

7. SETTING UP

- In the main menu, using the “▼” button on remote control to select the “**SETUP**” item, and then press the “ENTER” button. You will be presented with the Eyezone B1080P-4 settings screen.
- You can also press the “**SETUP**” button on remote control to directly open the settings screen. (If there is file that is being play, please stop first.)
- There are four groups of sub-menu in the main menu (“Network Setup”, “FTP Setup”, “Video Setup” and “Other Setup”).
- In the settings screen, you can use the “▲、▼、◀、▶” buttons to select an item, and press the “ENTER” button to confirm the selection.
- Press the “**SETUP**” button on remote control to save and quit the settings screen.



7.1 NETWORK SETUP



- **Network with:** Select your network connection Disable/ RJ45.
- **IP Assigned by DHCP:** If you have a DHCP-enabled router, please select “On”, and then the router will automatically assigns an IP address to the Eyezone B1080P-4. If you don't have a DHCP –enabled router, select “Off” and type the network information in “**Assign IP Address**”.

7.1 NETWORK SETUP (continued)

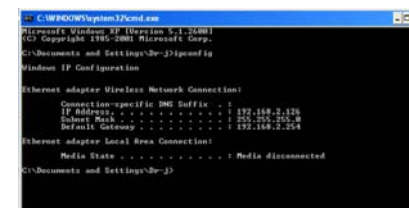
- **Assign IP Address:** If the Eyezone B1080P-4 is connected to a network without a DHCP server or you want to use Local FTP Server function, enter the fixed IP address, Mask, Gateway and DNS for the Eyezone B1080P-4.

PS. Refer to 5.1 for how to enter IP address by remote control.

NOTE: Before setting the IP address, Mask, Gateway and DNS, check the network information of your PC. Please follow the steps below to get the network information of your PC.

Step 1: Click on “Start” → “Run” and type in “command”, then press “ENTER”.

The MS-DOS window will appear, type in “ipconfig” and then press “ENTER” to get the network information.



Step 2: Assign IP Address, Mask (Subnet Mask) and Gateway (Default Gateway) for the Eyezone B1080P-4.

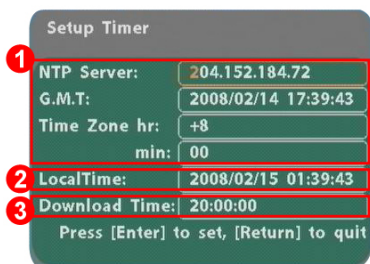
Enter the same values of the Subnet Mask and Gateway, and be careful not to enter the values of IP address that are already used by other devices on the network.

- **Media Player 11 Server:** Enable/ disable the Media Player 11 server.

7.2 FTP SETUP



- **Local FTP Server:** Turn on/ off the Eyezone B1080P-4 server.
(If you use the Eyezone B1080P-4 server, please disable the DHCP function and input a fixed IP address, Mask, Gateway and DNS of the Eyezone B1080P-4)
- **Local FTP Server Setup:** Set the “Port”, “User ID” and “Password” of the Eyezone B1080P-4.
(The Default Port: 21, User ID: root, Password: admin)
- **FTP Auto Download:** Enable/ Disable the FTP auto download function.
- **Remote FTP Download Setup**
 - **Server IP:** Enter the domain name or IP address of the FTP as was given to you by your Web hosting provider.
 - **Port:** The default port for FTP is 21. In most cases you should not change this number.
If the FTP site uses a port other than 21, you should enter the correct port.
 - **User ID:** Enter the user name of the Remote FTP server.
 - **Password:** Enter the Password of the Remote FTP server.
 - **FTP Path:** Enter the folder path that you want to share.
- **NTP Server:** Enable/ Disable the NTP server function. (if the B1080P-4 isn't connect to internet, please disable the NTP Server function)
- **Time Setup:** Set the **NTP Server**, **Local Time** and **Auto Download Time** here.



- ① **NTP Server** (the Eyezone B1080P-4 must be already connected to the network)
- NTP Server: Enter the NTP server IP address like: 204.152.184.72.
 - G.M.T: After B1080P-4 get the time from NTP server, it will update the G.M.T field.
 - Time Zone: Use the **Volume +**, **-** and **Numeric Key** to set the time zone of your location.
(time zone must be set properly for the **Auto-Download** and **Schedule** functions)

NOTE: GMT and applied regions

Time Zone	Region
(GMT-12:00)	Eniwetok, Quazalen
(GMT-11:00)	Midway, Ireland, Samoa
(GMT-10:00)	Hawaii
(GMT-09:00)	Alaska
(GMT-08:00)	Pacific GMT (U.S. & Canada); Tijuana
(GMT-07:00)	Continental GMT (U.S. & Canada)
(GMT-07:00)	Arizona
(GMT-06:00)	Mexico city
(GMT-06:00)	Saskatchewan
(GMT-06:00)	Eastern Coast GMT (U.S. & Canada)
(GMT-06:00)	Indiana (Eastern Coast)
(GMT-04:00)	Atlantic GMT (Canada)
(GMT-04:00)	Santiago
(GMT-04:00)	Caracas, La Paz
(GMT-04:00)	Newfoundland
(GMT-03:00)	Greenland
(GMT-03:00)	Buenos Aires, Georgetown
(GMT-03:00)	Brasilia
(GMT-02:00)	Mid-Atlantic
(GMT-01:00)	Capo Verde Is.
(GMT-01:00)	Azores
(GMT-00:00)	Greenwich GMT; Dublin, Edinburgh, Lisbon, London
(GMT-00:00)	Casablanca, Monrovia
(GMT+01:00)	Beograd, Bratislava, Budapest, Ljubljana, Prague
(GMT+01:00)	Brussels, Copenhagen, Madrid, Paris
(GMT+01:00)	Sarajevo, Skopje, Sofia, Vilnius, Warsaw, Zagreb
(GMT+01:00)	Midwest Africa
(GMT+01:00)	Amsterdam, Berlin, Bern, Rome, Stockholm, Vienna
(GMT+02:00)	Bucharest
(GMT+02:00)	Athens, Istanbul, Minsk
(GMT+02:00)	Jerusalem
(GMT+02:00)	Cairo
(GMT+02:00)	Harare, Pretoria

Time Zone	Region
(GMT+02:00)	Helsinki, Riga, Tallinn
(GMT+03:00)	Nairobi
(GMT+03:00)	Moscow, Saint Petersburg, Volgograd
(GMT+03:00)	Baghdad
(GMT+03:00)	Kuwait, Raid
(GMT+03:30)	Tehran
(GMT+04:00)	Baku, Tbilisi, Ere van
(GMT+04:00)	Abu Dhabi, Muscat
(GMT+04:30)	Kabul
(GMT+05:00)	Yekaterinburg
(GMT+05:00)	Islamabad, Karachi, Tashkent
(GMT+05:30)	Calcutta, Chennai, Mumbai, New Delhi
(GMT+05:45)	Katmandu
(GMT+06:00)	Sri Jayewardenepura Kotte
(GMT+06:00)	Astana, Dakar
(GMT+08:00)	Irkutsk, Ulan Bator
(GMT+08:00)	Kuala Lumpur, Singapore
(GMT+08:00)	Taipei
(GMT+08:00)	Perth
(GMT+09:00)	Seoul
(GMT+09:00)	Yakutsk
(GMT+09:00)	Osaka, Sapporo, Tokyo
(GMT+09:30)	Darwin
(GMT+09:30)	Adelaide
(GMT+10:00)	Guam, Port Moresby
(GMT+10:00)	Brisbane
(GMT+10:00)	Vladivostok
(GMT+10:00)	Canberra, Melbourne, Sydney
(GMT+10:00)	Hobart
(GMT+11:00)	Magadan, Solomon Is., New Caledonia
(GMT+12:00)	Auckland, Wellington
(GMT+12:00)	Fiji, Kamchatka Pen., Marshall Is.
(GMT+13:00)	Nuku'alofa

- ② **Local Time:** Set the system time manually.

NOTE: If the **NTP Server** and **Local Time** have been set, the NTP Server will be the first priority (the Eyezone B1080P-4 is already connected to the network).

- ③ **Download Time:** Set the FTP auto-download time.

- **Local HTTP Server:** Enable/ Disable the HTTP command function.
- **Local HTTP Server Setup:** To set the “Port”, “User ID” and “Password” of the Eyezone B1080P-4. (The Default Port: 80, User ID: root, Password: admin)

NOTE: Press the “**SETUP**” button on the remote control to save the settings, and it will auto exit the settings screen, then restart the Eyezone B1080P-4.

7.3 VIDEO SETUP



- **TV Standard:** Select the output TV video format (NTSC / PAL).
- **NTSC Active Output:** Select the output mode. (HDMI/ SD Video/ VGA/ HD Y.Pb.Pr)
You can also press directly the “TV MODE” button on the remote control to select output mode.
- **Aspect-ratio:** Select TV mode 4:3 or 16:9.
- **HDMI:** Select the HDMI output resolution among 480i / 480p / 720p / 1080i / 1080p.
Select the “Auto EDID”, the Eyezone B1080P-4 will scan the display device connected and set the correct resolution automatically.
- **SD Video:** Select the SD output mode. (“S-Video” or “Y.Cb.Cr”)
- **VGA 60Hz:** Select the VGA output resolution.
(640*480 / 800*600 / 1024*768 / 1280*1024 / 1360*768)
- **HD Y.Pb.Pr 60Hz:** Select the Y.Pb.Pr output resolution among 480p / 720p / 1080i.
- **Scrolling text color:** Select the text color (white/ yellow/ green/ rotation)
- **Scrolling text background:** Turn on/ off the text background.
- **Scrolling text:** Select the language of scrolling text: Latin (English)/ Japanese.

7.4 OTHER SETUP

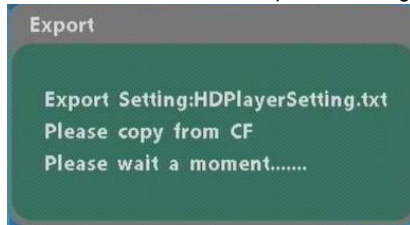


- **Play OSD Display:** Enable or disable the OSD display.
- **Auto Play**
 - Movies: Auto play movie files on the CF card after power on.
 - Pictures: Auto play picture files on the CF card after power on (slideshow function).
 - MultiLayer: Directly execute Multiple Display function after power on.
 - Video In: Auto play the live video from display device after power on
 - Off: Turn off the Auto Play function.
- **SlideShow Interval:** Set the time each photo is shown to 10, 15, 30 or 60 seconds.
- **Lock Remote Controller:** Enable/ disable the auto key lock function. (The B1080P-4 will auto lock when there is no further input for 1 minute.)
- **Lock Password Setup:** Press the “Enter” button to open the “Set Password” window. Enter the password with numeric buttons and press the “Enter” button to save the new password (The default password: 123).



7.4 OTHER SETUP (continued)

- **Export Setting File:** Press the “Enter” button to export the configuration value to the CF card.



- Copy the file “HDPlayerSetting.txt” on CF card to your PC. Use the “Wordpad” to open the file, and you can see all the configuration value of B1080P-4.
- You can modify directly the configuration value on your PC.

Example. [AutoPlay] Off Options: Movies, Pictures, Off

The “Auto Play” function is turned off, you can change directly the mode to Movies or Pictures.

```
[TVStandard] NTSC Options:NTSC,PAL
[AspectRatio] TV_16_9 Options:TV_4_3LETTERBOX
[AutoPlay] Off Options:Movies,Pictures,Off
[PlayButton] All Options:All,Default
```



```
[TVStandard] NTSC Options:NTSC,PAL
[AspectRatio] TV_16_9 Options:TV_4_3LETTERBOX
[AutoPlay] Movies Options:Movies,Pictures,Off
[PlayButton] All Options:All,Default
```

- Copy the completed file “HDPlayerSetting.txt” from PC to CF card. Insert the CF card to the B1080P-4, the B1080P-4 will apply the new settings automatically.
- **Play Button:** Only for used with play buttons. The Eyezone B1080P-4 supports two options (Repeat Default / Repeat All) when the demo file finishes playing.
- **Multiple Display:**
 - Movie: Display movies (live video or stored video) with scrolling text.
 - Movie + PIC (L): Display movies (live video or stored video) and pictures with scrolling text, and the pictures are on the left.
 - Movie + PIC (R): Display movies (live video or stored video) and pictures with scrolling text, and the pictures are on the right.
- **Scrolling Text Speed:** Select the display speed of the scrolling text.
- **Picture Slide:** Set the mode of picture slideshow (**By Slide Time/ Match Video**).

8. USING THE B1080P-4

8.1 PLAY MEDIA FILES ON THE CF CARD


Step 1: Insert the CF card with media files, then turn on the Eyezone B1080P-4 and press the “ENTER” button on the remote control when “mnt/CF” is highlighted to take you into the CF card.



Step 2: Select the type of data (VIDEO/ AUDIO/ PICTURES) you want to play, and then press the “ENTER” button on remote control to take you into the “VIDEO LIBRARY”, “AUDIO LIBRARY” or “PICTURE LIBRARY”.



RETURN

PS. If the symbol  (return) appears on the screen, you can use “RETURN” button of the remote control to go back one layer.

Step 3: Select the file you want to play, and press “ENTER” or “PLAY” button on the remote control to play the file.



VIDEO LIBRARY



AUDIO LIBRARY



PICTURE LIBRARY

8.1.1 Using the Remote Control When Media File Is Playing

- **SETUP:** Press the button to adjust the brightness, contrast or saturation while the **video** or **picture** is playing. With the “+ VOLUME –” button.

- **First Press:** Adjust the brightness.
- **Second Press:** Adjust the contrast.
- **Third Press:** Adjust the saturation.



Brightness

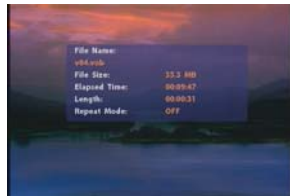


Contrast



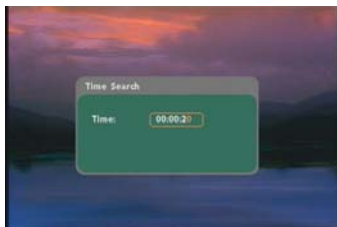
Saturation

- **MUTE:** Mute the sound while the movie or music is playing.
- **+ VOLUME -:** Increase/ decrease the volume while the **video** or **music** is playing.
- **SHUFFLE:** Turn on/ off the shuffle function.
- **PREV / NEXT:** Play the previous/ next file.
- **REPEAT:** Select the repeat mode.
- **REV / FWD:** Rewind/ forward movie or music file.
- **STOP:** Stop playing, and go back one layer.
- **INFO:** Display the file information.



File Information

- **SERACH:** Search video (movie) timeframe
Press the “SEARCH” button, and enter the initial time that you want to start at, then press the “ENTER” button to play.



- **PAUSE/STEP:** Pause the playback or play frame by frame.
- **ZOOM:** Zoom in/ out on the movie or picture.



Original Size



First Press : ZOOM 01



Second Press : ZOOM 02



Third Press : ZOOM 03

8.2 MULTIPLE DISPLAY ZONES

Step 1: Put movies, pictures (only supports PNG format/ size: 150x400/ 96DPI) and text file on CF card.

Picture Files

If you select the “By Slide Time” item of the picture slide mode; please name the picture files 0.png ~ 9.png.

If you select the “Match Video” item of the picture slide mode, the file name of the picture must be the same of the corresponding movie file.

Text File

Use the “Notepad” to create a text file on your PC. Enter the message that you want to display and named the file “message.txt”.

Step 2: Select the **Multiple Display Zones** item to display the movies and pictures with scrolling text immediately.



8.3 LIVE VIDEO DISPLAY

Mode 1: Play Live Video Only



Step 1: Connects the video source (TV Box, DVD Player or camera) to video and audio input of B1080P-4.

Step 2: Turn off the background of scrolling text (refer to 7.3 Video Setup).

Step 3: Select the Video In item to directly play the live video on your screen.



Mode 2: Play Live Video with Scrolling Text



Step 1: Connects the video source (TV Box, DVD Player or camera) to video and audio input of B1080P-4.

Step 2: Use the “Notepad” to create a text file that you want to play on your PC and named the file “message.txt”. Put the scrolling text file on CF card.

Step 3: Refer to 7.3 Video Setup to set the text color and turn on the background of scrolling text.

Step 4: Select the **Video In** item to directly play the live video and scrolling text on your screen.



Mode 3: Play Live Video, Pictures and Scrolling Text Simultaneously



Step 1: Connects the video source (TV Box, DVD Player or camera) to video and audio input of B1080P-4.

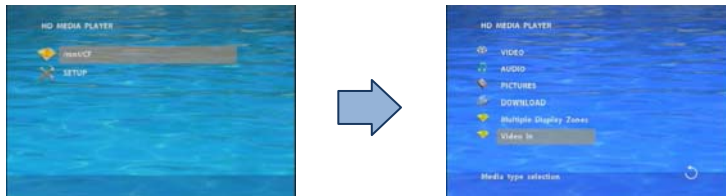
Step 2: Put pictures (only supports PNG format/ size: 150x400/ 96DPI) on the CF card.

NOTE: You should set the picture slide mode to "By Slide Time" (refer to 7.4 Other Setup), and named the picture files 0.png ~ 9.png (supports up to 10 pictures).

Step 3: Use the "Notepad" to create a text file that you want to play on your PC and named the file "message.txt". Put the scrolling text file on CF card.

Step 4: Refer to 7.3 Video Setup to set the text color and turn on the background of scrolling text.

Step 5: Select the Video In item to directly play the live video, pictures and scrolling text simultaneously on your screen.

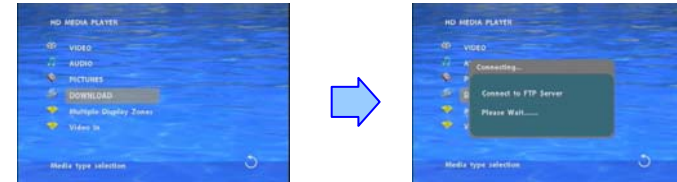


8.4 DOWNLOAD FUNCTION

Before it downloading files from the FTP server, Eyezone B1080P-4 will delete all contents on CF card except the file on the CF card and the FTP server are the same.

8.4.1 Manual Download Function

- Please confirm that the Eyezone B1080P-4 is already connected to the network. (Refer to 7.1 Network Setup)
- Please use the "▼" button to select the "DOWNLOAD" item, and press "ENTER" button. The Eyezone B1080P-4 will connect to the FTP server and download files automatically.
- Before download files, Eyezone B1080P-4 will delete all contents on CF card first.



- The pop-up window that shows the status of download and the screen saver will appear while the Eyezone B1080P-4 is downloading files. After finishing downloading files, the Eyezone B1080P-4 will display the files automatically.



Screen Saver

8.4.2 Auto Download Function

- If there is more than one Eyezone B1080P-4, you can use ftp tools to divide them into different regional group.



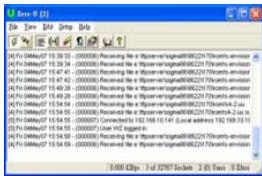
For example.

- Use the ftp tool “**Serv-U**” to divide into three groups, and setup the “User name”, “Password” and “FTP port number” of three groups for login ftp server.

Group 1: User name: ipmedia/ Password: 0000/ FTP port number: 21

Group 2: User name: ipmedia2/ Password: 1111/ FTP port number: 21

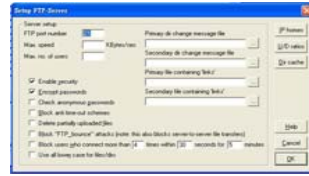
Group 3: User name: ipmedia3/ Password: 2222/ FTP port number: 21



FTP tool : Serv-U



Setup “User name”, “Password” and “FTP port number”



- Enter the “**Remote FTP Download Setup**” window of Eyezone B1080P-4, and then type the same “User name (User ID)”, “Password” and “Port”. The Eyezone B1080P-4 in group 1, please type the “User ID: ipmedia”, “Password: 0000” and “Port: 21”.



- Please enter the “**Network Timer NTP**” window of Eyezone B1080P-4, and set up the “**Download Time**”, then the Eyezone B1080P-4 will download all the files from the FTP server at the designated time.



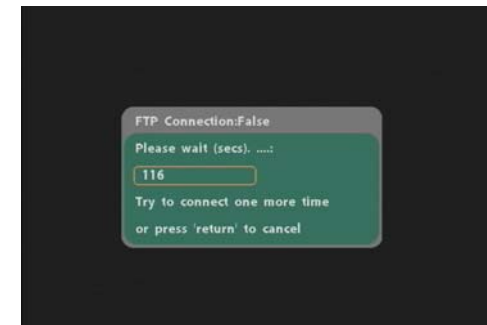
NOTE: The filename of the media files in FTP server cannot have any spaces.

8.4.3 Download Pause / Resume

Eyezone B1080P-4 supports download pause/resume. You can press the “STOP” button to pause downloading media files. The Eyezone B1080P-4 can continue unfinished downloads upon next session.



NOTE: If the network connection is unstable or broken, a pop-up window will appear as shown below. The Eyezone B1080P-4 will attempt to resume downloading in 2 minutes. The user can terminate the download by pressing the “RETURN” button.



8.5 PLAY THE MEDIA FILES ON THE PC

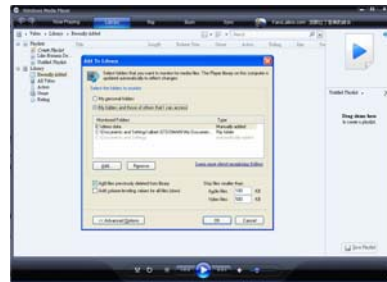
■ Using Windows Media Player Version 11 (Windows XP/ Vista only)

Step 1: Please download and install Windows Media Player Version 11 on your PC first.

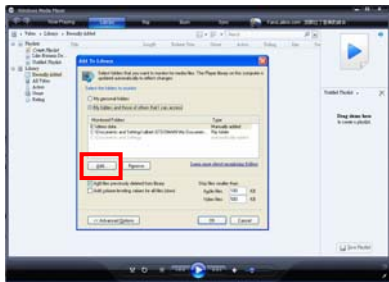
Step 2: Launch the Windows Media Player Version 11 and the window below will appear.



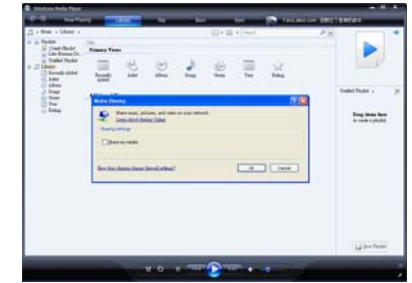
Step 3: Click the "Library" tab, and then click "Add to Library".



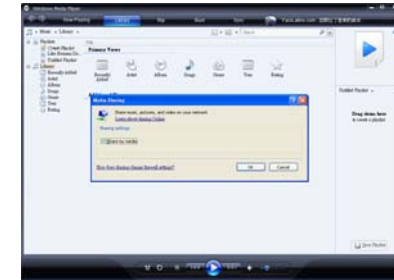
Step 4: Click "Add" and select the folder containing the media files you want to share, and then click on the "OK" button.



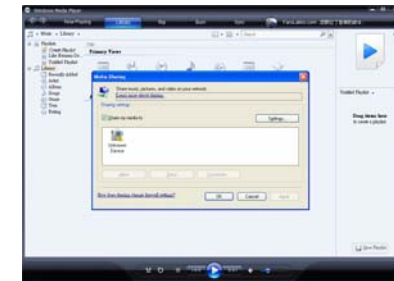
Step 5: Click the "Library" tab, and then click "Media Sharing".



Step 6: Select the "Share my media", and click "OK".



Step 7: In the Media Sharing dialog box, select the "Share my media" check box.



Step 8: Confirm that the Eyezone B1080P-4 is connected to the network.

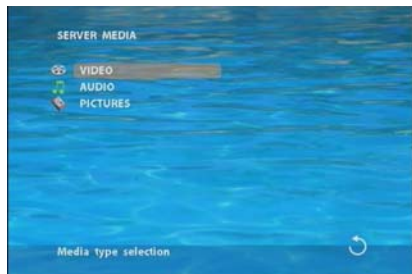
In the list of devices below the “Share my media to” check box, select the device (Eyezone B1080P-4), and click “Allow” to share the media files.



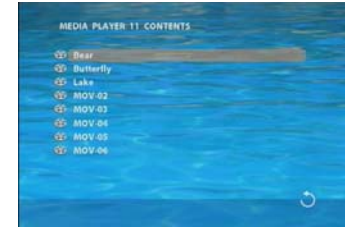
Step 9: The shared folder will appear on the screen of the Eyezone B1080P-4. Select the folder and click the “ENTER” button on remote control to go into the folder.



Step 10: Select the type of data (VIDEO/ AUDIO/ PICTURES) you want to play, and then press the “ENTER” button on remote control.



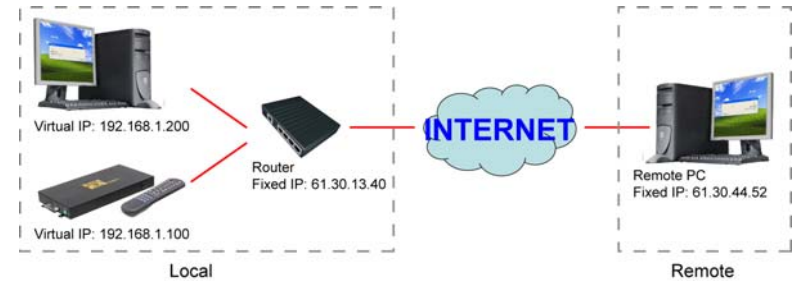
Step 11: Select the file you want to play, and press “ENTER” or “PLAY” button on the remote control to play the file.



NOTE: If the media files shared from PC are not listed on screen, restart your PC.

8.6 DOWNLOAD / UPLOAD MEDIA FILES

Method 1: Connect by IE Browser



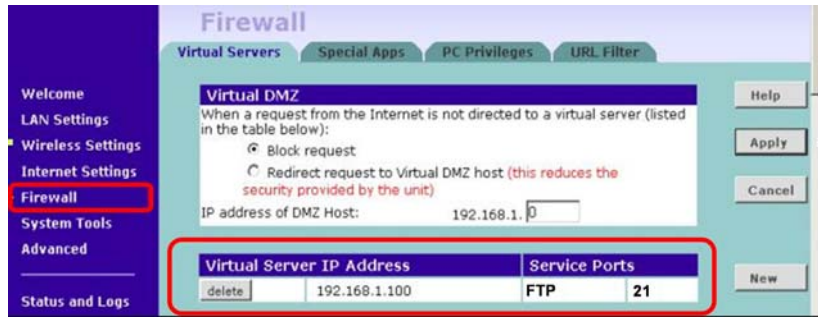
Step 1: Confirm the “IP Assigned by DHCP” has been disabled, then enter the “Eyezone Network Setup” item, and type IP Address (example. 192.168.1.100), Mask and Gateway for the Eyezone B1080P-4 (refer to 7.1).



Step 2: Confirm the “Local FTP Server” function has been enabled (refer to 7.1).



Step 3: Please setup your router or firewall, and open a port 21 for the Eyezone B1080P-4. The following figure is an example, please refer to your user's manual of router for opening ports.



Step 4: Start IE Browser on PC and type the FTP site or IP:

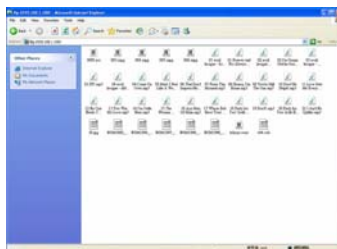
In the local PC, please type "ftp://192.168.1.100".

In the remote PC, please type "ftp://61.30.13.40:21".

Step 5: Then type the "User Name" and "Password" and click "Log On" to log on to the Eyezone B1080P-4 Server. (Default User Name: root Default Password: admin)



Step 6: After logging on, all the media files in the CF card on the Eyezone B1080P-4 will be listed. You can download and upload the media files between CF card and your PC.

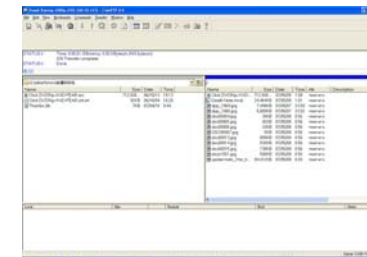


NOTE: After file being download/ upload will stop playing. After downloading files, the Eyezone B1080P-4 will display the movie files automatically.

Method 2: Connect by FTP Tools

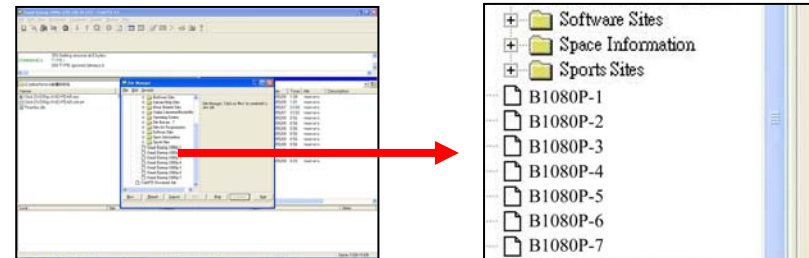
For example.

- If there are multiple Eyezone B1080P-4, you can use the "CuteFTP" tool to connect and manage files easily.

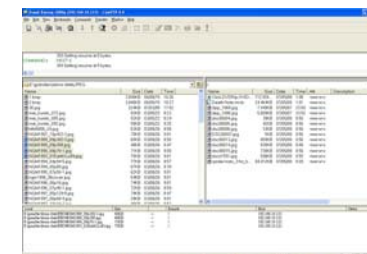


CuteFTP

- You can create all the Eyezone B1080P-4, and only select the Eyezone B1080P-4 that you want to connect in the list.



- Select the files you want upload to the Eyezone B1080P-4, or download the files to your PC.



NOTE: After file being download/ upload will stop playing. After downloading files, the Eyezone B1080P-4 will display the movie files automatically.

8.7 RS-232 FUNCTION (RS-232 cable is optional)

Use the tool "Tera Term" or other tools to control the Eyezone B1080P-4 with ASCII command.

NOTE. 1. Baud Rates:

- Firmware Updating: Set up the baud rate as "115200".

- ASCII Command: The available baud rates is "38400".

2. The reaction time of B1080P-4 is around three seconds.



Keyboard Layout

q : POWER	- : VOL -	w : SLOW
R : RETURN	* : MUTE	> : NEXT
! : REPEAT	S : SELECT	< : PREW
~ : SETUP	A : Auto Download	u : UP
# : TV MODE	p : PLAY	d : DOWN
% : AutoPlay	P : PAUSE/STEP	l : LEFT
i : INFO	x : STOP	r : RIGHT
m : NTSC/PAL	f : FFW	s : ENTER
\$: SEARCH	b : REW	C : CLEAR
+ : VOL +	(XXXXX.XXX) : Play The File (xxxxx.xxx is the file name) NOTE : Must include the round brackets.	
[number]: Play the file by index. (numbers < upper case letters < lowercase letter)		

Pin Assignment

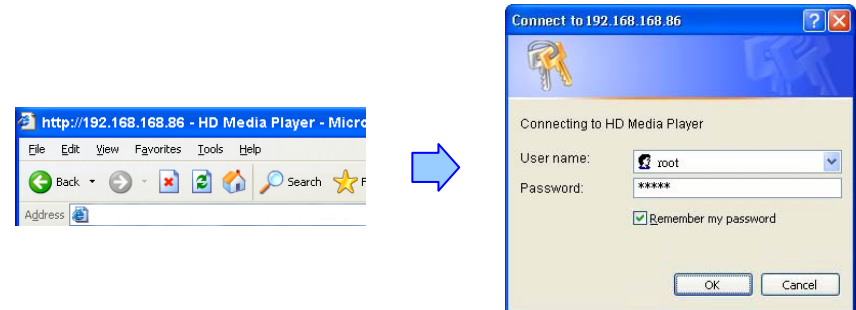
D Sub 9Pin Female	D Sub 9Pin Female
Pin 1	Pin 4
Pin 2	Pin 3
Pin 3	Pin 2
Pin 4	Pin 1
Pin 5	Pin 5
Pin 6	Pin 6
Pin 7	Pin 8
Pin 8	Pin 7
Pin 9	Pin 9

9. HTTP COMMAND FUNCTION

- Confirm that the Eyezone B1080P-4 is already connected to the network. (Refer to 7.1)
- Confirm the "Local HTTP Server" function has been enabled, and the "Local HTTP Server Setup" set has been completed (refer to 7.2).
- Set your router or firewall, and open a port 80 for the Eyezone B1080P-4. The following figure is an example, please refer to your user's manual of router for opening ports.



- Start IE Browser on PC and type the HTTP site or IP :
In the local PC, please type "http://192.168.1.100".
In the remote PC, please type "http://61.30.13.40:80".
- Type the "User Name", "Password" and click "OK" to log on. (Default User Name: root Default Password: admin)



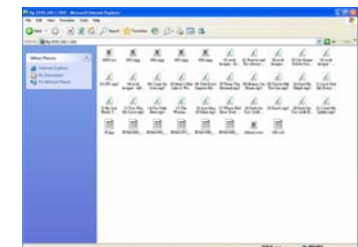
- There are three items: "Player Control", "Network Setup" and "Timer Setup" in the window.



9.1 PLAYER CONTROL

Player Control	Network Setup	Timer Setup
Power State	<input type="text" value="Power On"/> <input type="button" value="Power"/> Turn On/Off the Video Output	
Check State	<input type="text" value="Stop"/> <input type="radio"/> Refresh Automactially(Enable) <input type="radio"/> Refresh Automactially(Disable)	
Playback Control	<input type="button" value="Refresh"/> Display and Refresh the State of MediaPlayer	
Play File	<input type="text" value="File Name: "/> <input type="button" value="Send"/> Wait to play the file	
Text Bar	<input type="text" value="Text: "/> <input type="button" value="Send"/> Wait to play the Text Bar	
Multiple Display Mode	<input type="radio"/> Movie <input type="radio"/> Movie+Fic(L) <input type="radio"/> Movie+Fic(R)	
Scrolling Text Speed	<input type="radio"/> x1 <input type="radio"/> x2 <input type="radio"/> x3	
Picture Slide	<input type="radio"/> By Slide Time <input type="radio"/> Match video	
Scrolling Text Color	<input type="radio"/> White <input type="radio"/> Yellow <input type="radio"/> Green <input type="radio"/> Rotation	
Scrolling Text Background	<input type="radio"/> On <input type="radio"/> Off	
Scrolling Text Language	<input type="radio"/> Latin <input type="radio"/> Japanese	
Repeat File	<input type="radio"/> Repeat All <input type="radio"/> Repeat Track <input type="radio"/> Repeat Off	
AutoDownload	<input type="button" value="Send"/> AutoDownload immediately	
Stop AutoDownload	<input type="button" value="Send"/> Stop AutoDownload immediately	
Connect FTP Server	<input type="text" value="FTP Server Address: http://192.168.10.21"/>	
Volume Control	<input type="text" value="21"/> (0~30)	
Auto Play	<input type="radio"/> Movies <input type="radio"/> Pictures <input type="radio"/> MultiLayer <input type="radio"/> VideoIn <input type="radio"/> Off	
Format CF Memory Card	<input type="button" value="Send"/>	
Reboot System	<input type="button" value="Send"/>	

- **Power State:** Turn on/ off the B1080P-4.
- **Check State:** Check the current state of B1080P-4.
- **Playback Control:** Control the B1080P-4 to play file/ stop playback/ pause the playback/ play the previous file/ play the next file/ rewind movie/ forward movie.
- **Play File:** Enter the file name that you want play, and click "Send" to play the file immediately.
- **Text Bar:** Enter the message that you want to display, and press "Send" to display the scrolling text message on the screen immediately. (the message you entered through the http function will not be stored on CF card.)
- **Multiple Display Mode:** Set the multiple display mode.
- **Scrolling Text Speed:** Set the display speed of scrolling text.
- **Picture Slide:** Set the mode of picture slideshow (**By Slide Time/ Match Video**)
- **Scrolling Text Color:** Select the text color (white/ yellow/ green/ rotation).
- **Scrolling Text Background:** Turn on/ off the text background.
- **Scrolling Text Language:** Set the text language (**Latin/ Japanese**).
- **Repeat File:** Select the repeat mode.
- **Auto Download:** Click "Send" to execute the auto download function immediately.
NOTE: The "FTP Auto Download" function must be turned on and completed set.
- **Stop Auto Download:** Click "Send" to stop the auto download function immediately.
- **Connect FTP Server:** Click the FTP server address to connect to the B1080P-4, and enter the user name and password (**Default User Name:** root, **Default Password:** admin) to log on. After logging on all the media files in the CF card on the Eyezone B1080P-4 will be listed. You can download and upload the media files between CF card and your PC.



- **Volume Control:** Enter the value for volume (0-30).
- **Auto Play:** Select the auto play mode (Movies/ Pictures/ /Multi Layer/ Video In/ Off).
- **Format CF Memory Card:** Directly format the CF card.
- **Reboot System:** Click "Send" to reboot the B1080P-4 immediately.

9.2 NETWORK SETUP

- **Network Interface:** Select your network connection Disable/ RJ45 (Wi-Fi function only for B1080PW).
- **DHCP:** Enable/ Disable the DHCP function.
- **IP Address:** Enter the fixed IP address, Mask, Gateway and DNS for the Eyezone B1080P-4.
- **FTP Server:** Enable/ Disable the FTP Server function. You can also change the User ID, Password and port of the FTP Server.
- **HTTP Server:** Enable/ Disable the HTTP Server function. You can also change the User ID, Password and port of the HTTP Server.
- **Media Player 11:** Enable/ disable the Media Player 11 server.
- The **“WiFi Encryption Mode”** and **“WiFi SSID”** items only for B1080PW.
- **Reboot System:** After setting, click **“Send”** to reboot the B1080P-4.

9.3 TIMER SETUP

- **NTP Server:** Set the NTP Server.
- **Auto Download:** Set the auto download time.
- **Remote FTP:** Set the Remote FTP Server.
- **Reboot System:** After setting, click **“Send”** to reboot the B1080P-4.

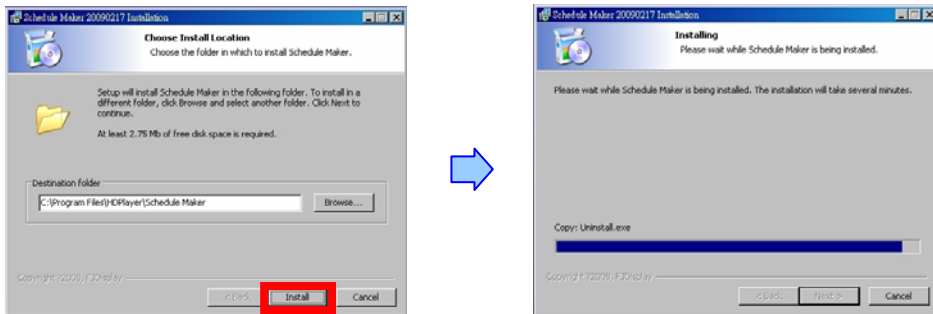
10. SCHEDULE FUNCTION

NOTE: The “NTP Server” or “Local Time” must be set before using the Schedule Function. (refer to 7.2)

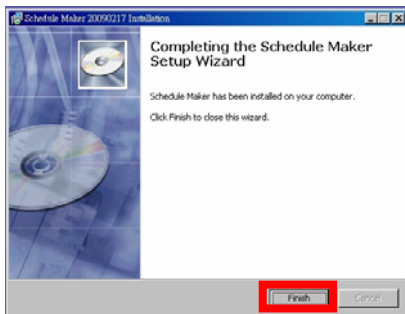
10.1 INSTALL THE SCHEDULE SOFTWARE


Put the bundled CD in the CD-Rom driver and double click on the “setup.exe”, then the installation program will launch. Please follow the instruction below for finishing the installation.

- Choose the path you'd like to install the program. The default path is “C:\Program Files\HDPPlayer\Schedule Maker”. After choosing the path, please press “Install” button, then the installation program will copy and register the files to your system.



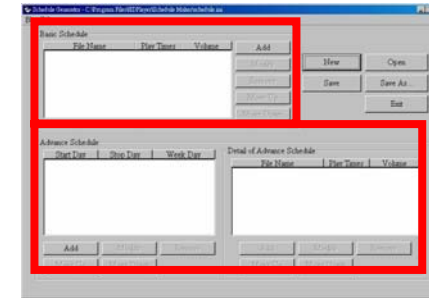
- After copying the files, a window will pop up to prompt you that the process is done. Please press “Finish” button to end the installation.



- After installing the schedule software, the “Schedule Maker” icon () should appear on your desktop. Or you could also find the shortcut of “Schedule Maker” by click on < Start > → < Programs > → < Schedule Maker 20090217 > → < Schedule Maker > .

10.2 START THE SCHEDULE SOFTWARE

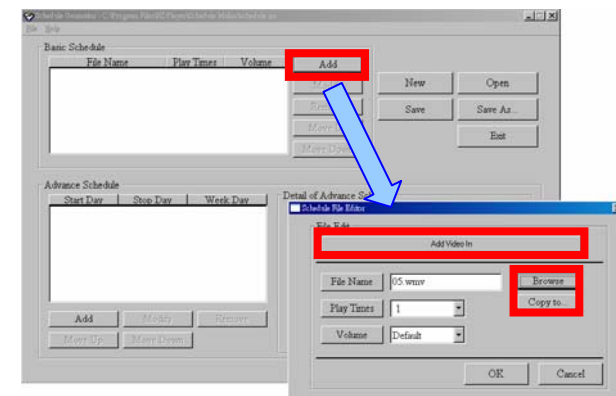
- You might double click the “Schedule Maker” icon on your desktop for opening the “Schedule Generator”. Or you might click on <Start> → <Programs> → <Schedule Maker 20090217> → <Schedule Maker > for starting the program.
- There are two parts of program: “Basic Schedule” and “Advance Schedule” in the window.



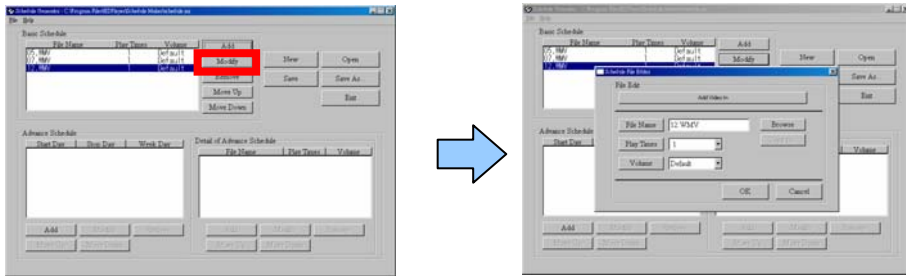
10.2.1 Basic Schedule

In the “Basic Schedule” mode, you could arrange a basic schedule that instructs the player to play specified video files or play the video input in the ordinary time. You could also set up the play times of each video file on the schedule.

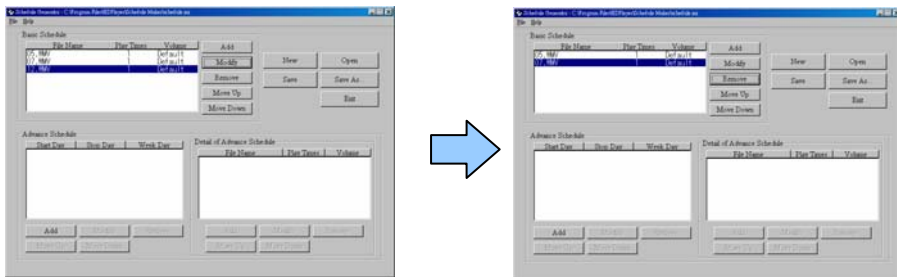
- Add:** Click this button to chose a video file or video input. The following diagram appears:
 - Click on “**Add Video In**” button for instructing the player to play the video input only.
 - Click the “**Browser**” button to search for files that you want to add. You can also set up the “Play Times” and “Volume” of the file in this window. Click the “**OK**” button to complete the setup.
 - Click the “Add” button again to add other file. If you choose “Video In” in the previous step, the “Add” button will be blank. That means you want the player to play the “Video In” in the ordinary time. And if you'd like the player switching between the “Video In” and video files in the specific time, you might combine a Video In Basic Schedule with an Advance Schedule function.
 - COPY Function:** Click the “**Copy to...**” button to copy directly the added file to the memory card.



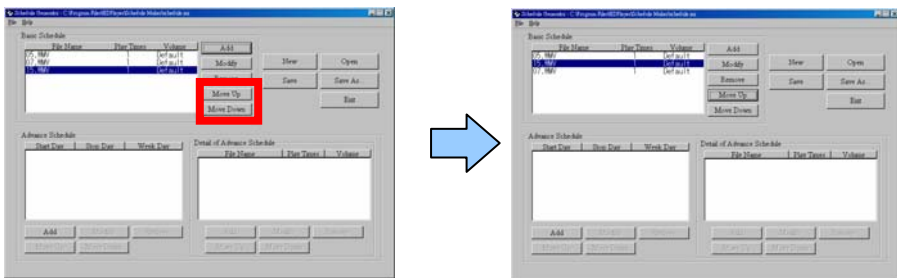
- **Modify:** Click this button to modify the file in the list.
 - Select the file that you want to modify in the list, and press the **“Modify”** button.



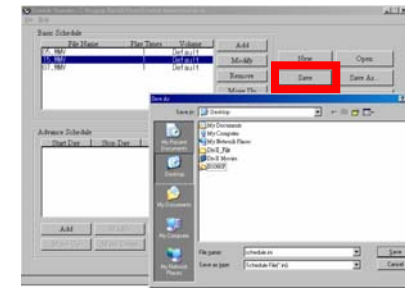
- **Remove:** Click this button to remove the file from the list.
 - Select the file that you want to remove from the list, and press the **“Remove”** button to delete.



- **Move Up / Move Down:** Click these buttons to change the order that the files are played.



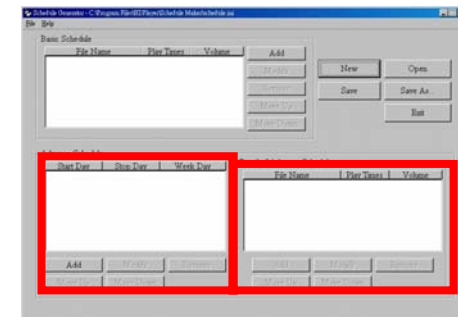
- Press the **“SAVE”** button and a pop-up window will appear. Select the path, then click the **“SAVE”** button to save your setup.



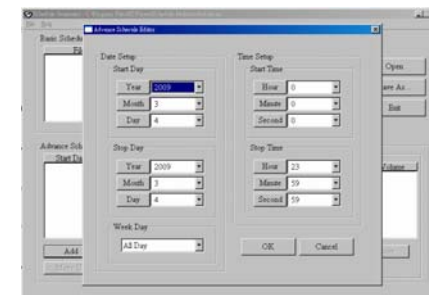
NOTE: Do not rename the file (schedule.ini), otherwise the B1080P-4 will not be able to read the file.

10.2.2 Advance Schedule

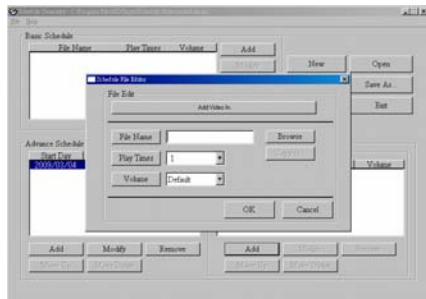
In the “Advance Schedule” mode, you can select files that you want to play, and can also set up the play times, and the initial and end time of each file. There are “Time Setup” and “File Setup” in the “Advance Schedule”.



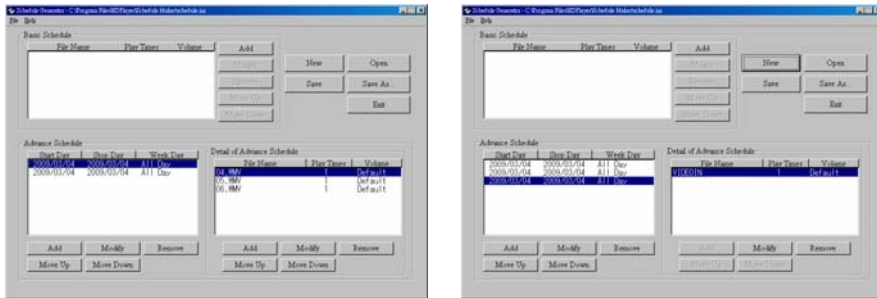
Step 1: Click the “Add” button in the “Time Setup” section to open the “Advance Schedule Editor” window. Set up the Start and Stop Date, Start and Stop Time and the Week Day, then click “OK” to quit the window.



Step 2: Click the “Add” button in the “File Setup” section to open the “Schedule File Editor” window. Click the “Browse” button to select a file that you want to play. You can also set up the “Play Times” of the file in the window. Click the “OK” button to complete the setup. Or you can add video in schedule by pressing “Add Video In” button for instructing the player to play the “Video In” in a specific period of time.



Step 3: Repeat the steps 1 and 2 to add other files or “Video In”.



Step 4: After finishing all setup, press the “SAVE” button and a pop-up window will appear. Select the path, then click the “SAVE” button to save.

NOTE: Do not rename the file (schedule.ini), otherwise the B1080P-4 will not be able to read the file.

10.2.3 Explanation of the Warning Message

■ No any schedule! ! Can't Save!

There is no schedule file in the “Basic Schedule” or “Advance Schedule” can be saved. Please add and edit a new schedule file first.



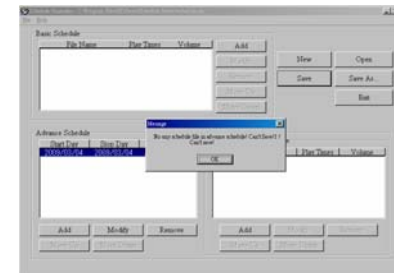
■ Date Setup Error!

There are some errors in the “Advance Schedule”. Check the date/ time of the schedule for conflict or error.



■ No any schedule file in advance schedule! ! Can't Save! !

There is no schedule file in the advance schedule. Please add files that you want to play in the advance schedule.



10.3 APPLY THE SCHEDULE ON THE B1080P-4

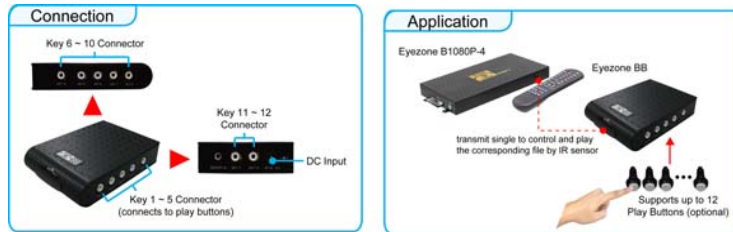
Put the “eyezone.ini” file and the associated media files on the memory card, and insert the memory card to the B1080P-4. The B1080P-4 will auto play the files at the designated time.

11. OPTIONAL AUXILIARY EQUIPMENT

11.1 PLAY-BUTTON BOX (Eyezone BB)

- The Play Button Box (Eyezone BB) supports up to 12 play-button inputs.
- Press one of the play buttons to play the corresponding file.

Hardware Connection



Play the Media File By the Play-Button

ex. 5 Play-Buttons (supports up to 12 play buttons)

Step 1: Put 6 demo files on CF card. (1 default file and 5 demo files)

NOTE: The files are sorted by filename in ascending order alphanumerically (numbers < upper case letters < lowercase letter). Each button is mapped to a file by this order.

For Example :

There are 6 demo files on the CF card. The file names are a01.xxx, 33.xxx, b55.xxx, 1abc.xxx, 07.xxx and A01.xxx. (xxx is extension of the file)

Default File : 07.xxx Demo File 1 : 1abc.xxx Demo File 2 : 33.xxx
 Demo File 3 : A01.xxx Demo File 4 : a01.xxx Demo File 5 : b55.xxx

Step 2: Insert the CF card to the Eyezone B1080P-4, and the Eyezone B1080P-4 will play the default file automatically while powered on.

Step 3: Press one of the buttons 1-5 to play the corresponding demo file.

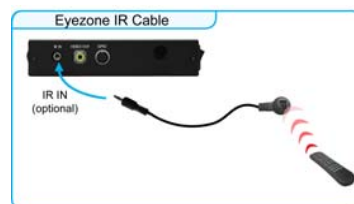
Step 4: The Eyezone B1080P-4 supports two options (Repeat Default / Repeat All) when the demo file finishes playing. The functions can be set in the setup menu. (Other Setup → Play Button)

- **Repeat Default:** Eyezone B1080P-4 will automatically play the default file when the demo file finishes playing.
- **Repeat All:** Eyezone B1080P-4 will automatically play all the demo files when the demo file finishes playing.

NOTE: If you are in **Video In Display** mode, the B1080P-4 will automatically play the live video from video source when the demo file finishes playing.

11.2 IR Cable

The IR cable is an external remote control receiver. Connect the IR Cable to the IR connector.



11.3 PIR SENSOR (Eyezone PIR)

- **Application 1:** The Eyezone PIR is an external remote control receiver.
- **Application 2:** The Eyezone PIR is a motion detector.



11.3.1 Using the PIR Sensor

Step 1: Insert the CF card to the Eyezone B1080P-4, and the Eyezone B1080P-4 will play the default file automatically while powered on.

Step 2: After sensing approaching subjects, the Eyezone B1080P-4 will play the first demo file.

Step 3: The Eyezone B1080P-4 supports two options (Repeat Default / Repeat All) when the demo file finishes playing. The functions can be set in the setup menu. (Other Setup → Play Button)

- **Repeat Default:** Eyezone B1080P-4 will automatically play the default file when the demo file finishes playing.
- **Repeat All:** Eyezone B1080P-4 will automatically play all the demo files when the demo file finishes playing.

NOTE: If you are in **Video In Display** mode, the B1080P-4 will automatically play the live video from video source when the demo file finishes playing.

11.4 TOUCH-SENSOR BUTTONS

11.4.1 Features of the Touch-Sensor Buttons

- The number of touch-sensor buttons can be customized to 12, 24 or 36 for OEM project.
- Used with various operating environment (glass, plastics and acrylic material, except metal material), the thickness supports 3mm -5mm, and it can be customized to 5cm for OEM project.



11.4.2 Demo Files

Ex. Using the wireless 5 Touch-Sensor Buttons

- Put 6 demo files on CF card. (1 default file and 5 demo files)

NOTE: The files are sorted by filename in ascending order alphanumerically (numbers < upper case letters < lowercase letter). Each button is mapped to a file by this order.

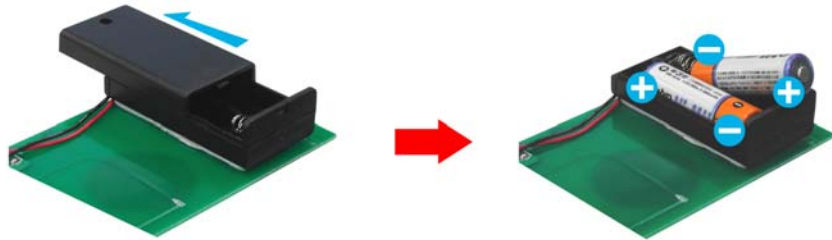
For Example :

There are 6 demo files on the CF card. The file names are a01.xxx, 33.xxx, b55.xxx, 1abc.xxx, 07.xxx and A01.xxx. (xxx is extension of the file)

Default File : 07.xxx Demo File 1 : 1abc.xxx Demo File 2 : 33.xxx
 Demo File 3 : A01.xxx Demo File 4 : a01.xxx Demo File 5 : b55.xxx

11.4.3 Connect to the Touch-Sensor Buttons

- Open the battery cover and set the batteries (AA size) as shown below. Please note that the polarity of the battery.



11.4.4 Play the Demo Files

Step 1: Insert the CF card to the Eyezone B1080P-4, and the Eyezone B1080P-4 will play the default file automatically while powered on.

Step 2: Press one of the touch-sensor buttons 1-5 to play the corresponding demo file.

Step 3: The Eyezone B1080P-4 supports two options (Repeat Default / Repeat All) when the demo file finishes playing. The functions can be set in the setup menu. (Other Setup → Play Button)

- **Repeat Default:** Eyezone B1080P-4 will automatically play the default file when the demo file finishes playing.
- **Repeat All:** Eyezone B1080P-4 will automatically play all the demo files when the demo file finishes playing.

NOTE: If you are in **Video In Display** mode, the B1080P-4 will automatically play the live video from video source when the demo file finishes playing.

12. TROUBLESHOOTING

Situation	Check Point
No Picture	<ol style="list-style-type: none"> 1. Check power cable and power switches. 2. Ensure the video cables are connected between the player and the Eyezone B1080P-4. 3. Press the "TV MODE" button on the remote control to select the correct output mode. 4. Make sure the file format on the CF card is correct. 5. Check if the display device is switched to correct video input source.
No Response From the Remote Control	<ol style="list-style-type: none"> 1. Ensure that there are 2 batteries (AAA size) in the remote control and they are inserted the correctly. 2. Check for any barrier between the remote control and the product.
No sound	<ol style="list-style-type: none"> 1. Check if the mute function is on. 2. Check if the volume is set properly. 3. Check if audio cable has been connected correctly.
No Responding while pressing the wireless touch – sensor buttons	<ol style="list-style-type: none"> 1. Confirm the polarity of the battery.
Network Not Working	<ol style="list-style-type: none"> 1. Check your IP settings on the Network Setup page. (refer to 7.1) 2. If using wired network, make sure the network cable is plugged in on both the Eyezone B1080P-4 and your network hub.