

D-1000

GENERAL INFORMATION

EXPLODED VIEWS - PARTS LISTS

Webedition 08/2001

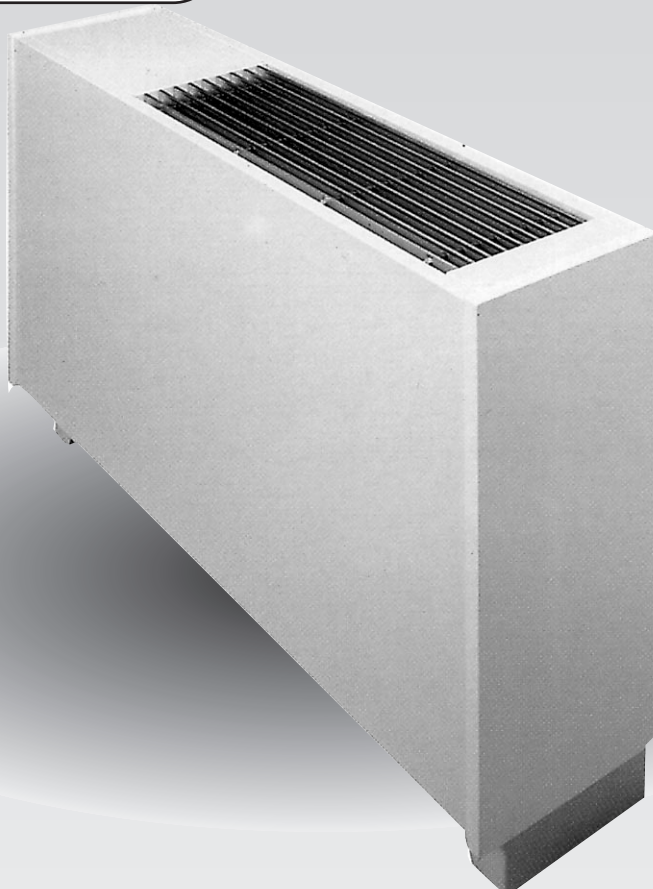
ENGLISH

Attention! 3 minutes delay on all units with 'Alfa-14' controller. When starting or restarting the unit, it will take 3 minutes before the compressor and the fan will start running.

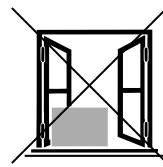
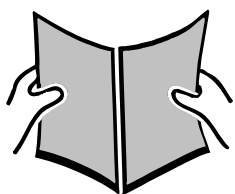
Achtung! Wenn Sie das Gerät (wieder) in Betrieb setzen, wird bei allen Geräten, die mit einem Zeitschaltuhr 'Alfa-14' ausgestattet sind, der Anlauf des Kompressors und der des Ventilators um 3 Minuten verzögert.

Attention! Quand vous mettez ou remettez votre appareil en fonctionnement, le compresseur et le ventilateur de tous les appareils équipés d'une horloge électronique 'Alfa-14' commencent à fonctionner après 3 minutes.

Attentie! Wanneer u het apparaat wilt (her)starten en het apparaat is uitgevoerd met een 'Alfa-14' tijdschakelaar, dan duurt het 3 minuten voordat compressor en ventilator starten.



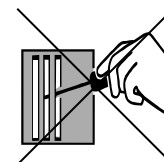
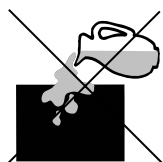
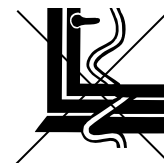
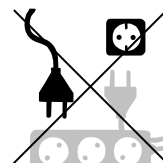
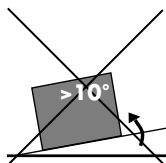
 **AMCOR**



SAFETY

For safety reasons, read this information carefully before operating. Persons who are not familiar with this type of product must not use it. We strongly recommend keeping this information in a safe place for future reference.

This appliance must be earthed. The unit is designated for indoor operation.



Refer to the rating plate for voltage and power input. The installation must be in accordance with regulations of the country where the installation is performed. The minimum distance between air inlet(s) and/or air outlet(s) and any object must be 40 cm.

- * The unit is safe. It has been approved by many safety institutions around the world. However, as with other electrical appliance, use it with care.
- * Keep out of reach of children.
- * Do not clean the unit by spraying it or immersing it in water.

- * Do not insert any object into an opening of the unit.
- * Disconnect from the mains before cleaning the unit or any of its components.
- * Never connect to an electrical outlet using an extension cord. If an outlet is not available, one should be installed by a licenced electrician.
- * Any service other than regular cleaning or filter replacement should be performed by an authorized service representative. Failure to do so could result in a loss of warranty.
- * When the unit is placed in a (swimming) pool, connect to the mains via a transformer or a breaking switch, conform the regulations regarding electrical installations.

AMCOR DEHUMIDIFIERS

You can't control humidity and haze outdoors. But in an indoor swimming pool and other humid interior spaces where hot stuffy air, steamy windows and walls are frequent phenomena, you can. That's why you need Amcor.

Amcor's dehumidifiers clear the air in damp interior spaces.

Condensation is removed from windows, walls and ceilings.

Vaporous stuffy air is drawn off, clean air is pumped back in.

You simply set the dial and the air humidity remains at the required level.

And, the Amcor dehumidifier is an energy saver.

Water evaporating from a swimming pool, bathroom, archive, store or from wet objects and surfaces increases the humidity of the air and creates the hazy and stuffy air often found in the hall.

At the same time water condenses on the cooler parts in the hall: windows, walls, ceilings, etc.

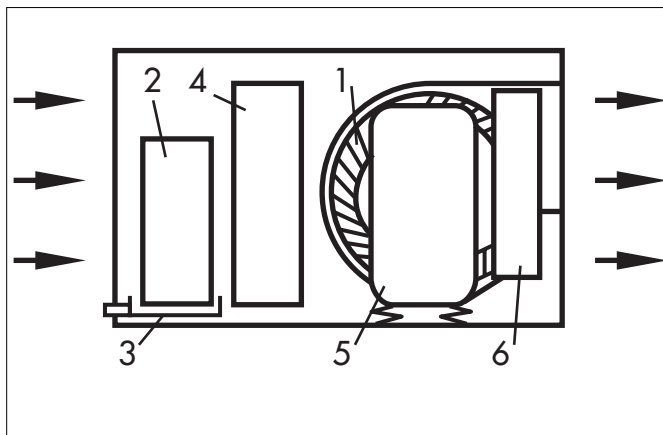
Water condensation is not only an aesthetic defect, it can, in the long run, cause structural damage.

There are two methods for drying the air in humid spaces:

- by ventilation,
- by heat pumps.

The Amcor dehumidifier is designed as a heat pump and has, through energy saving, a considerable advantage over a ventilation system.

HOW THE "AMCOR" DEHUMIDIFIER WORKS



The fan (1) sucks the humid air through the evaporator (2). There the air is cooled and the moisture in the air condenses into water. This water is collected in the tray (3) and drained away through the sump and piping. The compressor (5) pumps the heat, which has been extracted from the air, into the condensor (6). There, this heat is once again released, and absorbed by the dry air. The ready wired control box monitors and controls the operation.

ELECTRICAL WIRING

The unit can be supplied with a cord and an earthed plug. If it ever becomes necessary to replace this plug, be sure to use an earthed plug suitable for the power supply in your area and conform your national safety standard. The wires of the cable are coloured in accordance with the standard electrical code.

Blue	Neutral
Brown	Live
Green/Yellow	Earth

The **blue (neutral)** wire should be connected to the terminal in the plug marked N or coloured black.

The **brown (live)** wire should be connected to the terminal in the plug marked L or coloured red.

The **green/yellow (earth)** wire should be connected to the terminal in the plug marked E or coloured green or marked with this symbol:



The unit must be connected to the power supply with the appropriate leads.

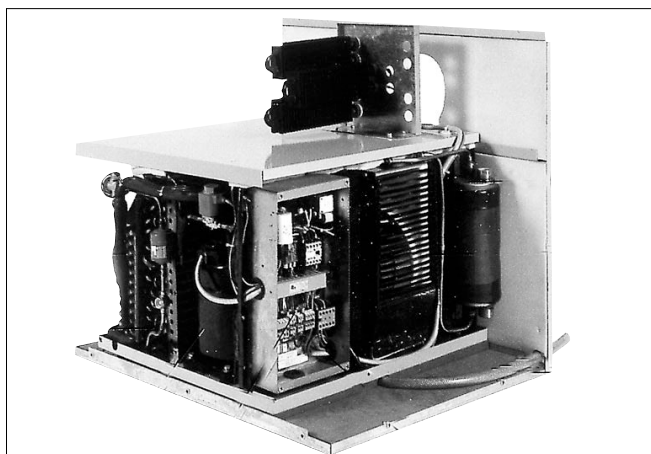
The cord should pass through holes with rubber grommets.

Properly fused disconnect switches must be installed between the unit and the power source.

The unit must be wired with an isolation (mains) switch accessible from outside the wet area in which the unit is installed, to comply with IEE regulations.

MAINTENANCE

The appliance is actually maintenance free, except in cases of soiling. In this case the filter has to be cleaned.



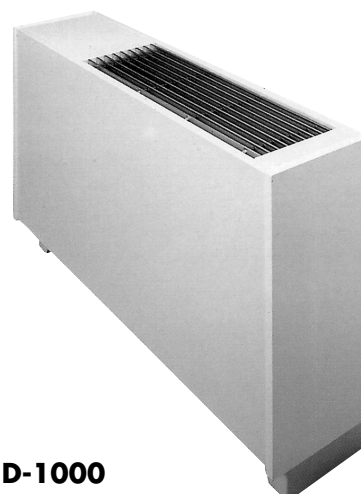
AMCOR MODEL D-1000

The Amcor D-1000 is a large capacity unit designed to run highly efficiently in a domestic, commercial or industrial environment.

The D-1000 keeps air dry and comfortable, prevents condensation, and creates a better climate to prevent damages caused by excessive humidity, such as: rusting of equipment, dry rot of walls, mould growth in store rooms, etc.

It is ideal for places such as: restaurants, bars, printing presses, indoor swimming pools, jacuzzis, garages, animal enclosures, cellars, stores, boat sheds, weekend cottages, archives, etc.

It can be positioned against the wall on legs.



Model D-1000

INSTALL AND OPERATE YOUR AMCOR D-1000

1. Correct positioning

It is possible to place the unit against the wall. The base of the unit at the air inlet must be clear of any obstruction by at least 400 mm. The top of the unit must be clear of any obstruction by at least 400 mm.

2. Electrical connections

The Amcor D-1000 must be connected to the power supply with appropriate leads.

The cord should pass through the hole with the rubber grommet on the top left side of the unit. Properly fused disconnect switches must be installed between the unit and the power source.

3. Condensate drainline

The end of the condensate drain pipe protrudes from the base of the dehumidifier on the back extending the pipe long enough to reach the nearest drain outlet and insert its end.

Check that the condensate water tube does not at any point slope upwards, which would cause a blockage. A "U" trap, located in a place where the water will not freeze, will prevent unpleasant odours from being drawn into the conditioned space. Where it is necessary for condensate pipework or an electrical cable to pass through a wall, a lined or sleeved hole should be made. Ensure that pipework and cables do not touch each other. The hole should be sealed when installation is completed.

4. Humidity control

The unit is controlled by a manually adjustable, automatic humidistat, that switches the dehumidifier On and Off, to maintain the desired humidity level. The humidistat should be 24V wall mounted type. It should be well ventilated and positioned at a height of about 1.50 m above the floor. The two leads of the humidistat should be connected to the appropriately marked terminals on the terminal strip in the electrical control panel. Those two leads should then be fed to the vertical, white plastic conduit attached to the internal dividing panel. Set the humidistat to the level of relative humidity required in the controlled space. For example, for normal comfort conditions the setting should be about 50% R.H.

5. Filter

The filter should be regularly checked and if necessary, removed for cleaning or replacement. Slide the framed filter forwards and lift it out. Hold it under streaming water and flush it clean. Let the trapped water drip off the filter fabric and replace the dried filter in reverse order.

6. De-icer control

Your Amcor D-1000 is equipped with an automatic de-icer control that guards against ice forming on refrigeration coils, in low temperature operation, by shutting off the compressor.

Note: The fan will keep running until all the ice has defrosted and then, the unit will start up again.

PROCEDURE ON START UP D-1000

PROCEDURE ON START UP

When the installation has been completed, carry out the following procedure:

1. Make sure that the air filter has been fitted and that unfiltered air cannot be drawn in.
2. Check the condensate drain system for leaks.
3. Check whether the unit has been correctly wired according to the wiring diagram supplied.

PRECAUTIONS D-1000

1. Switch off the power source at the mains, before servicing the unit.
2. Do not operate the unit with the filter removed.
3. The discharge air outlet grille and the return air filter must not be covered at any time.
The minimum distance between inlet(s) and/or outlet(s) and any object must be 40 cm.
4. If the unit has been switched off, wait at least 3 minutes before switching it on again. Safety cutouts and overload protective devices are fitted to protect the fan motor and the compressor.
5. Do not rapidly adjust the humidistat setting from one extreme to the other and back again.
6. For best results, close all windows to keep out additional moisture laden air.

TROUBLESHOOTING D-1000

If the unit does not operate:

1. Make sure unit is connected properly.
2. Check fuse.
3. Ensure that the humidistat is in the required mode.

If the unit "short-cycles":

1. Make sure that the filter is not blocked and that evaporator is not iced up.

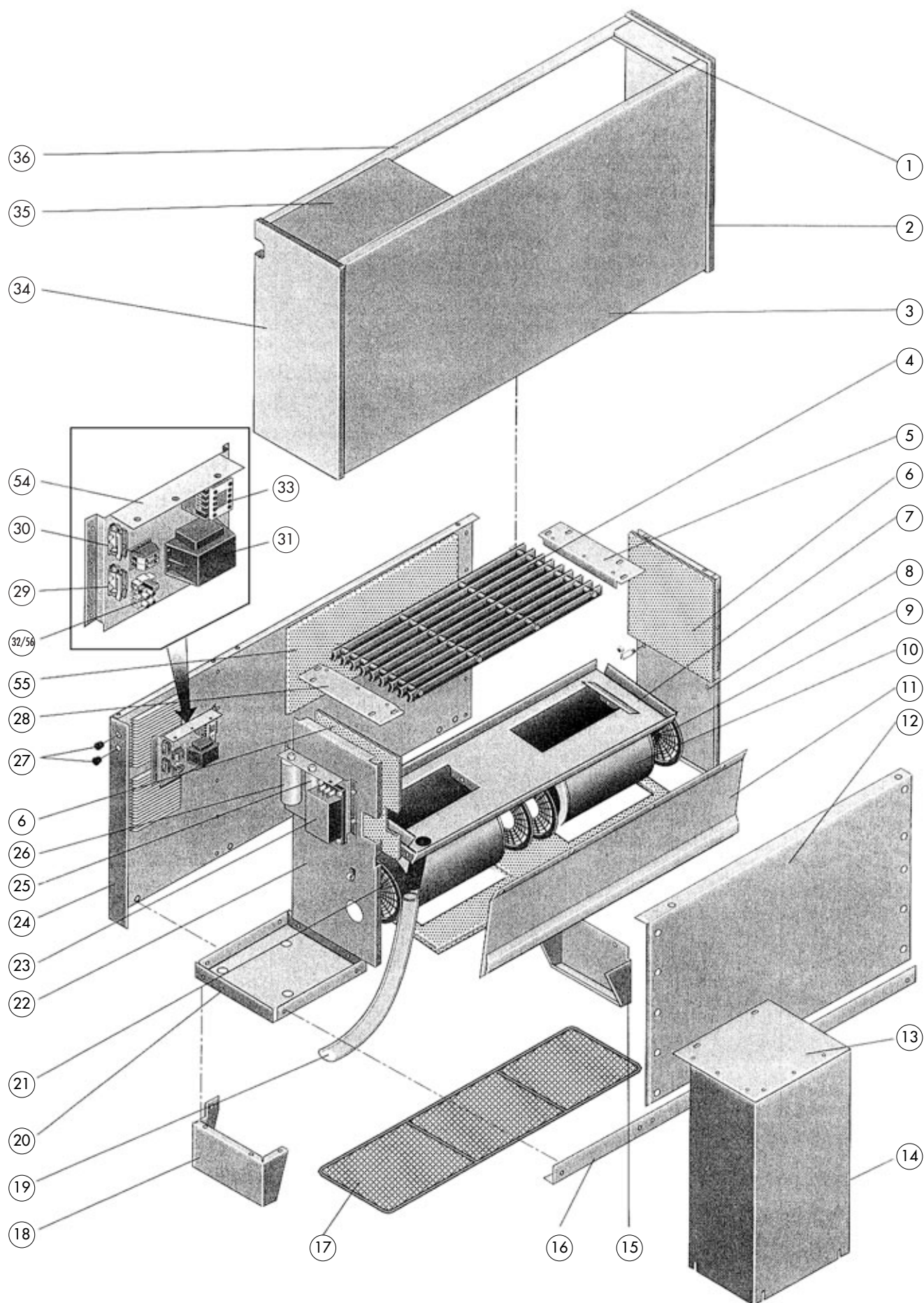
Leaking:

1. Make sure that condensate water tray outlet is not blocked.
2. Make sure the plastic condensate water tube is securely attached and that it does not slope upwards at any point, causing a blockage.

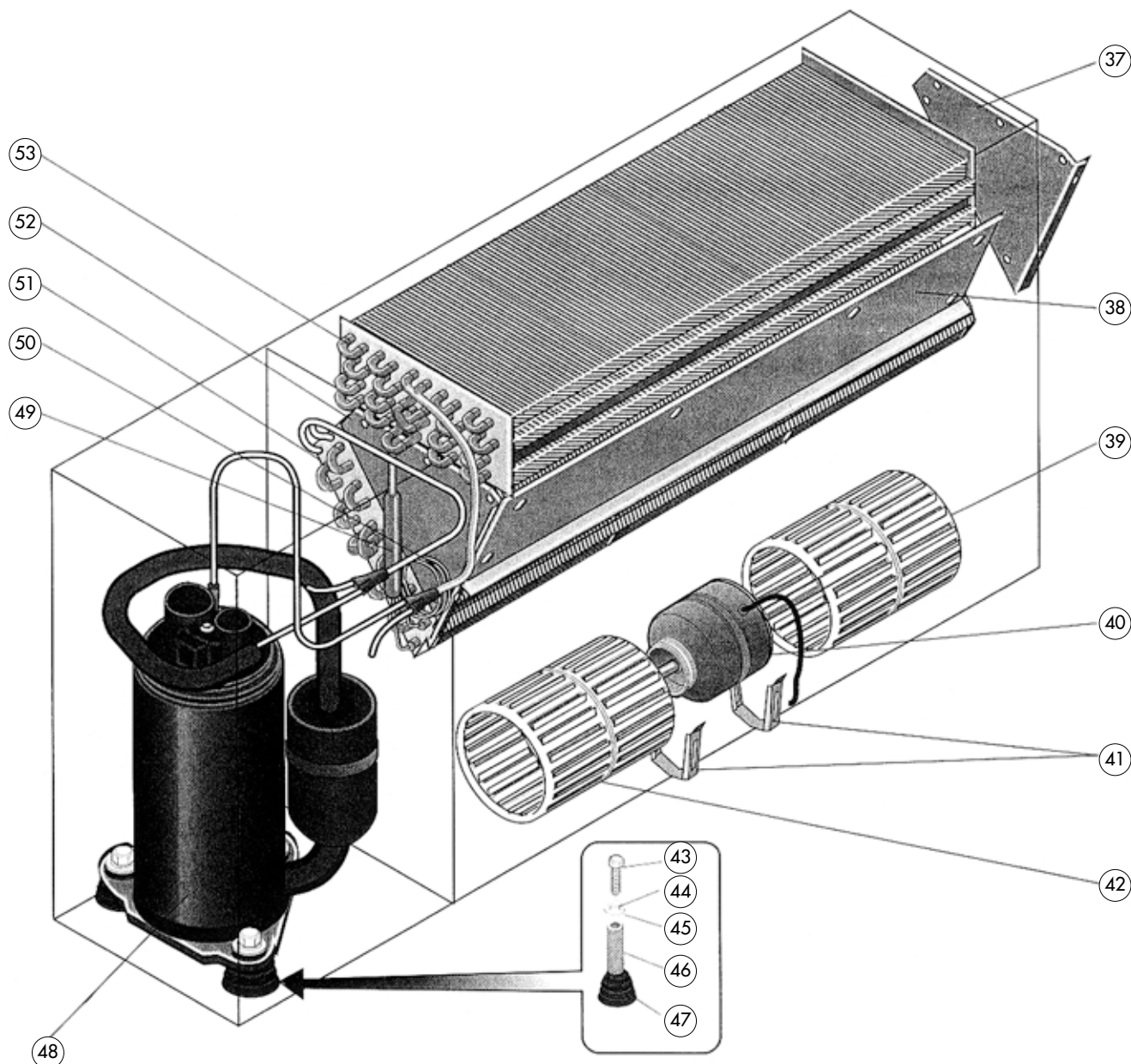
TECHNICAL DATA / D-1000

MODEL	D-1000	MOISTURE REMOVAL
ELECTRICAL SUPPLY	230 V	
FREQUENCY	50 Hz	
MOISTURE REMOVAL AT 30°C	3.0 l/h	
40-100% R.H.		
POWER INPUT	1260 W	
CURRENT	5.7 A	
REFRIGERANT	R407C (or R22)	
REFRIGERANT CHARGE	1260 g	
NET WEIGHT	58 kg	
LENGTH	1130 mm	
WIDTH	260 mm	
HEIGHT	680 mm	

EXPLODED VIEW / D-1000



EXPLODED VIEW / D-1000



MOISTURE REMOVAL / D-1000

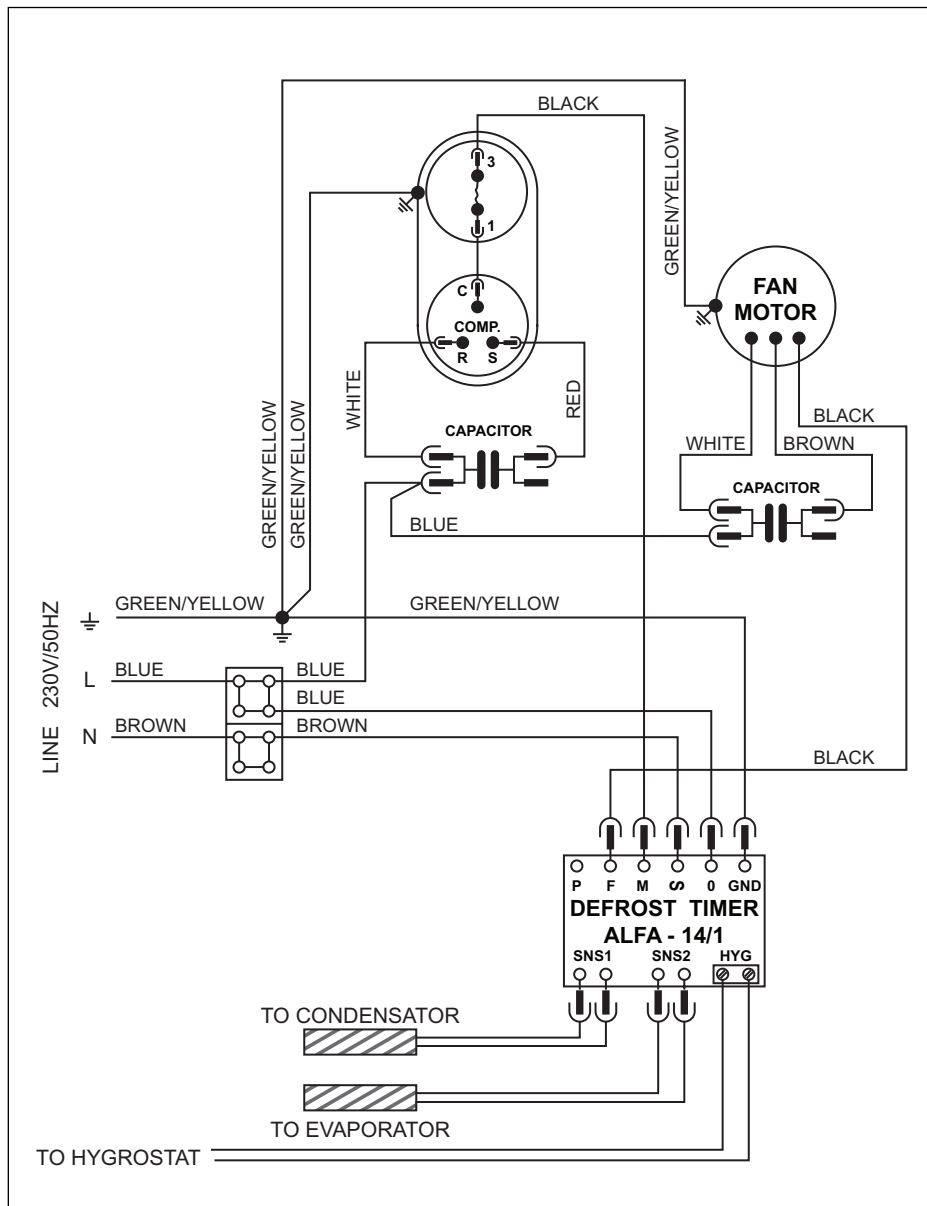
"AMCOR" D1000 - MOISTURE REMOVAL AT DIFFERENT ROOM TEMP. EN R.H.% (kg water/24h)

ROOM TEMP. °C	RELATIVE HUMIDITY %							
	85	80	75	70	65	60	55	50
15	40	36	33	30	27	24	23	17
20	56	51	46	42	37	33	30	26
25	75	68	62	56	50	44	39	35
30	93	85	77	70	62	55	49	44
35	101	92	83	76	68	60	53	48

PARTSLIST / D-1000

DRAWING NO.	PART NO.	QTY.	PART NAME	NO.
A2-1827-011	A414274	1	TOP COVER-RIGHT	1
A3-1827-015	O77001	1	PANEL-RIGHT	2
A1-1827-014	A382904	1	FRONT PANEL	3
A1-1827-046	A338666	1	LOUVERS	4
A3-1827-032	A442545	1	HOLDER-LOUVERS R	5
A2-1827-064	A433345	1	WALL-RIGHT	6+8
A3-1827-006	A431004	1	DRIAN PAN	7+21
	429152/3	2+2	DIFFUSER	9
	271264	2	SCROLL-BLOWER	10
A3-1827-043	A438684	1	DROPS DEFLECTOR	11
A1-1827-040	A342565	1	WALL FRONT	12
A2-1827-023	A342554	1	COVER	13+14
A2-1827-028	A501084	1	FOOT-RIGHT	15
A3-1827-031	A339094	1	HOLDER-FILTER	16
A3-1827-017	A436526	1	AIR FILTER	17
A2-1827-029	A501094	1	FOOT-LEFT	18
	410715	1	DRIAN PIPE	19
A1-1827-004	A326472	1	BASE	20
A2-1827-035	A433355	1	WALL-LEFT	22+6
	386117	1	DEFROST CONTROL	23
A1-1827022	A330675	1	PANEL-BACK	24+55
	425002	1	CAPACITOR-FAN MOTOR	25
DEPENDS OF COM		1	CAPACITOR-COMPRESSOR	26
	497103	2	GROMMET	27
A3-1827-033	A442554	1	HOLDER-LOUVERS L	28
	508027	2	CLIP	29
	346526	1	TERMINAL BLOCK	30
	482301	1	TRANSFORMER	31
	275016	1	TERMINAL & FUSE HOUSING	32
	429182	1	CONTACTOR	33
A3-1827-016	O77002	1	PANEL-LEFT	34
A2-1827-013	A414274	1	TOP COVER-LEFT	35
A3-1827-012	A372454	1	CROSS BAR	36
A3-1827-042	A433374	1	CONNECTING PANEL-R	37
A3-1827-030	A434624	1	DIRECTIVE WALL	38
	271264	2	BLOWER WHEEL	39/42
	291016	1	FAN MOTOR	40+41
DEPENDS OF COM		3	SCREW	43
ORDER WITH COM.		3	SPRING WASHER	44
ORDER WITH COM.		3	WASHER	45
ORDER WITH COM.		3	SLEEVE	46
ORDER WITH COM.		3	RUBBER GROMMET	47
	274312	1	COMPRESSOR	48
	292026	1	STRAINER-DISTRIBUTOR	49
	442002	1	CAPILLARY TUBE	50
A1-1827-019	X1002080678	1	EVAPORATOR	51
A2-1827-042	A433384	1	CONNECTING PANEL-L	52
A1-1827-018	X1204100722	1	CONDENSER	53
A2-1827-034	A422494	1	CONTROL BOARD	54
	326101	1	FUSE	56

WIRING DIAGRAM / D-1000



Amcorex B.V.

Anton Phillipsweg 9-11
1422 AL UITHOORN - Holland
Tel. +31 (0)297 56 00 79
Fax +31 (0)297 52 30 62
Internet: www.amcorex.com
e-mail: info@amcorex.com

Ancor (Appliances) Ltd.

9 Ryan Drive, West Cross Centre
Great West Road, Brentford
Middlesex TW8 9ER
United Kingdom
Tel. +44 (0)20 8560 4141
Fax +44 (0)20 8232 8814
e-mail: amcor@amcorintl.co.uk



AMCOR