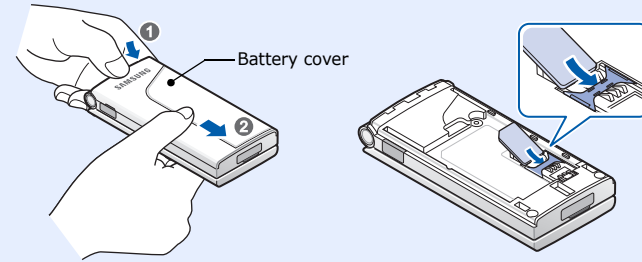


• Depending on the software installed or your service provider or country, some of the descriptions in this guide may not match your phone exactly.  
• Depending on your country, your phone and accessories may appear different from the illustrations in this guide.

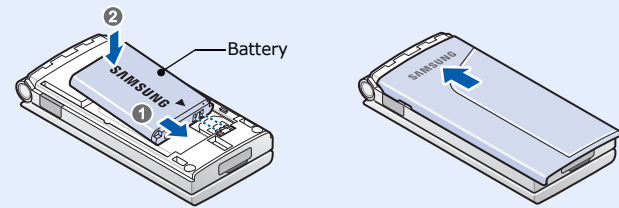
Printed in Korea  
Code No.: GH68-12634A  
English (EU). 10/2006. Rev.1.0  
World Wide Web  
http://www.samsungmobile.com

## Installing the SIM card and battery

1. Remove the battery cover and insert the SIM card.

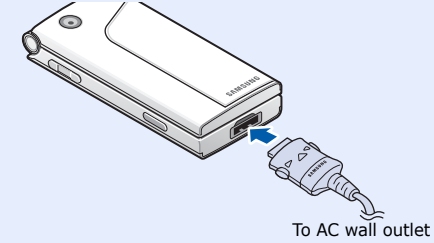


2. Install the battery and reattach the cover.

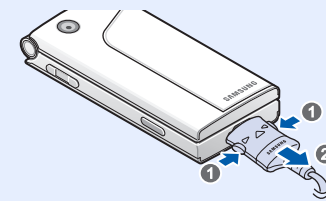


## Charging the battery

1. Plug the supplied travel adapter.

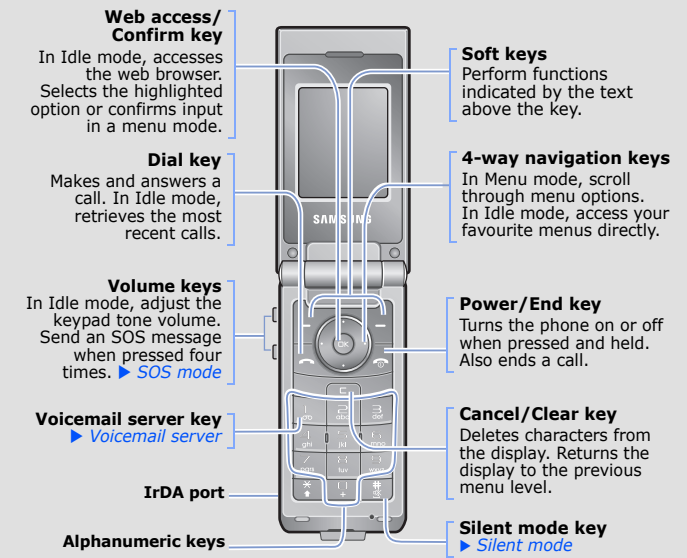


2. When charging is finished, unplug the adapter.



**Note:** Do not remove the battery from the phone without unplugging the adapter first. Otherwise, the phone may be damaged.

## Phone layout and key functions



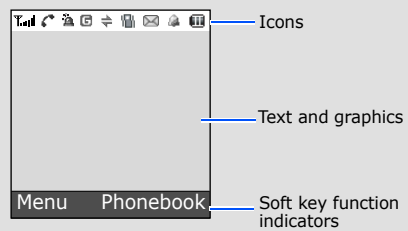
**Silent mode** Press and hold **#** in Idle mode to disable all sounds on the phone. To exit, press and hold this key again.

**Voicemail server** Press and hold **1** in Idle mode to access your voicemail server.

**SOS mode** With the phone closed, press the Volume keys four times in Idle mode to send an SOS message to preset phone numbers. Once the SOS message is sent, the phone will change to SOS mode and will receive calls only from the SOS message recipients until the SOS mode is cancelled. Upon receiving a call from the SOS message recipients, the phone will automatically answer the call, after one vibration, relaying the emergency situation to the caller.

## Display

Your phone is in Idle mode when you are not on a call or using a menu. You must be in Idle mode to dial a phone number.



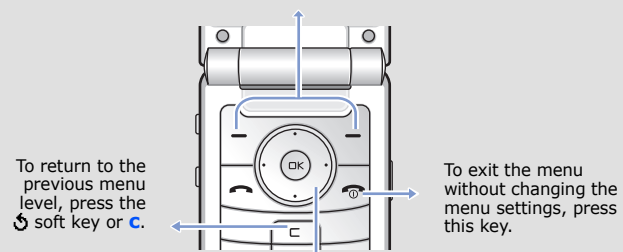
Your phone displays the following status indicators on the top of the screen:

| Icon | Description   |
|------|---|
|      | Received signal strength  |
|      | Call in progress  |
|      | Out of your service area; you cannot make or receive calls except for emergency calls |
|      | GPRS network  |
|      | Roaming network   |
|      | Call ringer set to vibrate  |
|      | Silent mode   |
|      | Mute mode   |
|      | Call diverting feature active   |
|      | IrDA feature active   |
|      | SOS message feature active  |
|      | New text message  |
|      | New multimedia message  |
|      | New voicemail message   |
|      | Alarm set   |
|      | Battery power level   |

## Using the menus

In Idle mode, press the **Menu** soft key to enter the main menu.

Labels at the bottom corners of the display show the current soft key functions. Press the left soft key (**Left**) or right soft key (**Right**) to perform the function indicated.



Use the 4-way navigation keys (**Up**, **Down**, **Left**, **Right**) as shortcuts to access your favourite menus.

1. In Idle mode, press the **Menu** soft key.
2. Select **Phone settings** → **Shortcuts**.
3. Select a key.
4. Select a menu to be assigned to the key.

To select or modify a menu or feature:

1. In Idle mode, press the **Menu** soft key.
2. Press the Navigation keys to reach a desired menu and then press the **Select** soft key or **OK**.
3. If the menu contains any submenus, locate the one you want by pressing the Navigation keys. Press the **Select** soft key or **OK** to enter the submenu.  
If the selected menu contains additional submenus, repeat this step.
4. Press the Navigation keys to find the setting of your choice.
5. Press the **Select** soft key or **OK** to confirm your chosen setting.

### Shortcut numbers

You can quickly access the menu you want by using shortcut numbers. The shortcut number displays in front of the menu name in Menu mode.

## Switching on or off the phone

1. Press and hold **Power** for more than one second to switch on the phone.
2. To switch off the phone, press and hold **Power** for more than two seconds.

## Changing the display language

1. In Idle mode, press the **Menu** soft key.
2. Select **Phone settings** → **Language**.
3. Select a language.

## Making a call

1. In Idle mode, enter an area code and phone number, and press **Call**.
2. When you want to end the call, press **End call**.

## Answering a call

1. When the phone rings, press the **Accept** soft key or **Call** to answer a call.  
To reject the call, press the **Reject** soft key or **End call**.
2. To end the call, press **End call**.

## Menu map

|                            |                         |                          |
|----------------------------|-------------------------|--------------------------|
| <b>1. SIM AT*</b>          | <b>5. Messages</b>      | <b>9. Phone settings</b> |
| <b>2. Call records</b>     | 5.1 Text messages       | 9.1 Infrared activate    |
| 2.1 Missed calls           | 5.2 Multimedia messages | 9.2 Display settings     |
| 2.2 Received calls         | 5.3 Push messages       | 9.3 Greeting message     |
| 2.3 Dialed calls           | 5.4 SOS messages        | 9.4 Own number           |
| 2.4 Delete all             | <b>6. Funbox</b>        | 9.5 Language             |
| 2.5 Call time              | 6.1 WAP browser         | 9.6 Security             |
| 2.6 Call cost*             | 6.2 FM Radio            | 9.7 Extra settings       |
| <b>3. Network services</b> | 6.3 Games               | 9.8 Shortcuts            |
| 3.1 Call diverting         | 6.4 Sounds              | 9.9 Volume key           |
| 3.2 Call barring           | 6.5 Images              | 9.0 Reset settings       |
| 3.3 Call waiting           | 6.6 Delete all          |                          |
| 3.4 Network selection      | 6.7 Memory status       |                          |
| 3.5 Caller ID              | <b>7. Organiser</b>     |                          |
| 3.6 Closed user group      | 7.1 Alarm               |                          |
| 3.7 Band selection         | 7.2 Calendar            |                          |
| <b>4. Sound settings</b>   | 7.3 Time & Date         |                          |
| 4.1 Ring tone              | 7.4 Calculator          |                          |
| 4.2 Ring volume            | 7.5 To do list          |                          |
| 4.3 Alert type             | 7.6 Voice memo          |                          |
| 4.4 Keypad tone            | 7.7 Currency exchange   |                          |
| 4.5 Message tone           | <b>8. Camera</b>        |                          |
| 4.6 Alert on call          | 8.1 Take photos         |                          |
| 4.7 Folder tone            | 8.2 My photos           |                          |
| 4.8 Power on/off           | 8.3 Memory status       |                          |
| 4.9 Extra tones            |                         |                          |

\* Shows only if supported by your SIM card.

## Adjusting the volume

1. In Idle mode, press the **Menu** soft key.
2. Select **Sound settings** → **Ring volume**.
3. Press **Up** or **Down** to adjust the volume level.
4. Press the **OK** soft key.

While a call is in progress, press the Volume keys to adjust the earpiece volume.

## Changing a ringtone for calls

1. In Idle mode, press the **Menu** soft key.
2. Select **Sound settings** → **Ring tone**.
3. Select a ringtone.

## Redialling recent numbers

1. In Idle mode, press **Call**.
2. Press **Up** or **Down** to scroll to the number you want.
3. Press **Call** to dial the number.

## Entering text

### Changing the text input mode

In a text input field, press the right soft key until the input mode indicator you want appears:

- **T9** : T9 mode
- **A** : ABC mode
- **1** : Number mode
- None: Symbol mode

### T9 mode

1. Press **2** to **9** to start entering a word. Press each key once for one letter.  
Example: To enter "Hello" in T9 mode, press **4**, **3**, **5**, **5**, and **6**.  
T9 predicts the word that you are typing, and it may change with each key that you press.
2. Enter the whole word before editing or deleting characters.

3. When the word displays correctly, go to step 4. Otherwise, press **0** to display alternative word choices for the keys that you have pressed.

For example, *Of* and *Me* use **6** and **3**.

4. Press **#** to insert a space and enter the next word.

### ABC mode

Press the keys labelled with the character you want:

- once for the first character
- twice for the second character
- and so on.

For example, press **2** three times to enter "C" and **5** two times to enter "K."

### Number mode

Press the keys corresponding to the digits you want.

### Symbol mode

Press the number keys corresponding to the symbol you want and press the **OK** soft key. You can press **Up** or **Down** to display more symbols.

### Tips for entering text

- To move the cursor, press the Navigation keys.

| Feature                    | Description   | Select   |
|----------------------------|---|--|
| Call time display          | View the duration of recent calls you have dialled and received. Also reset the time counter.                               | Menu > Call records > Call time                  |
| Call cost display          | View the cost of your calls.  | Menu > Call records > Call cost                  |
| Network services           | Access network services offered by your service provider.   | Menu > Network services                          |
| Select ringtone and volume | Select a ringtone for incoming calls, or a volume level.  | Menu > Sound settings > Ring tone or Ring volume |
| Alert type                 | Select an alert type for the call ringer.   | Menu > Sound settings > Alert type               |
| Select key tone            | Select a tone which the phone sounds when you press a key.  | Menu > Sound settings > Keypad tone              |
| Select message tone        | Select the alert ringtone for incoming SMS, MMS, and broadcast messages, or set how open you are informed of a new message. | Menu > Sound settings > Message tone             |
| Alert on call              | Set the phone to alert you when you receive a new message or when the time for an alarm comes during a call.                | Menu > Sound settings > Alert on call            |
| Folder tone                | Select the tone that the phone sounds when you open or close the phone.   | Menu > Sound settings > Folder tone              |
| Power on/ off tone         | Select the melody that the phone sounds when it is switched on or off.  | Menu > Sound settings > Power on/off             |

| Feature                      | Description   | Select                                   |
|------------------------------|---|--|
| Greeting message             | Enter the greeting message to be displayed when the phone is switched on.   | Menu > Phone settings > Greeting message |
| Check your own phone numbers | Check your phone numbers or assign a name to them.  | Menu > Phone settings > Own number       |
| Display language             | Select a language to be used for the display text.  | Menu > Phone settings > Language         |
| Security                     | Protect the phone against unauthorised use.   | Menu > Phone settings > Security         |
| Extra settings               | Set the automatic redialling feature or the answering method.   | Menu > Phone settings > Extra settings   |
| Menu shortcuts               | Set the Navigation keys as shortcuts to access your favourite menus directly.   | Menu > Phone settings > Shortcuts        |
| Volume key                   | Set whether the phone mutes the call ringer or rejects a call if you press and hold the Volume keys when a call comes in. | Menu > Phone settings > Volume key       |
| Reset the phone              | Reset the phone to the factory default settings.  | Menu > Phone settings > Reset settings   |

### Important safety precautions

Read these guidelines before using your wireless phone. Failure to comply with them may be dangerous or illegal.

#### Drive safely at all times

Do not use a hand-held phone while driving; park the vehicle first.

- To delete characters one by one, press **C**. To delete all of the letters, press and hold **C**.

- To insert a space between characters, press **#**.

- To change case in T9 mode or ABC mode, press **\***.

- To enter punctuation marks in T9 mode or ABC mode, press **1**.

### Sending an SMS message

1. In Idle mode, press the **Menu** soft key.

2. Select **Messages** → **Text messages** → **Write new**.

3. Enter the message text.

4. Press the **Options** soft key and add items using the following options:

- **Add objects:** add sounds, images, or animated images.

- **Add templates:** add text templates.

- **Add emoticon:** add emoticons.

- **Add phonebook:** add Phonebook contacts.

- **Add bookmark:** add bookmark items.

5. Press the **Options** and select **Send only**, **Save and send**, or **Save only**.

6. If you select **Save and send** or **Save only**, select a memory location.

| Feature                  | Description   | Select   |
|--------------------------|---|--|
| Extra tones              | Set additional tones for the phone.                           | Menu > Sound settings > Extra tones  |
| Read SMS or MMS messages | Read received, sent, or saved messages.                       | Menu > Messages > Text messages or Multimedia messages > Inbox, Outbox, or Draft         |
| Send SMS or MMS messages | Create and send messages to other mobile phones.              | Menu > Messages > Text messages or Multimedia messages > Write new                       |
| Message templates        | Preset templates of frequently used messages or emoticons.    | Menu > Messages > Text messages or Multimedia messages > Templates or Emoticon templates |
| Messaging options        | Set options for using messaging services.                     | Menu > Messages > Text messages or Multimedia messages > Settings or Setup               |
| Delete messages          | Delete messages in each message box, or all messages at once. | Menu > Messages > Text messages or Multimedia messages > Delete all                      |
| Message memory status    | Check memory information for messages.                        | Menu > Messages > Text messages or Multimedia messages > Memory status                   |

#### Switching off when refuelling

Do not use the phone at a refuelling point (service station) or near fuels or chemicals.

#### Switching off in an aircraft

Wireless phones can cause interference. Using them in an aircraft is both illegal and dangerous.

#### Switching off near all medical equipment

Hospitals and health care facilities may be using equipment that could be sensitive to external RF energy. Follow any regulations or rules in force.

#### Interference

All wireless phones may be subject to interference, which could affect their performance.

#### Special regulations

Follow any special regulations in force in any area and always switch off your phone whenever it is forbidden to use it.

#### Water resistance

Your phone is not water-resistant. Keep it dry.

#### Sensible use

Use only in the normal position (held to the ear). Avoid unnecessary contact with the antenna when the phone is switched on.

#### Emergency calls

Key in the emergency number for your present location, then press . Do not end the call until given permission to do so.

#### Small children and your phone

Keep the phone and all its parts including accessories out of reach of small children.

7. Enter a destination number and press the **Options** soft key → **Send message**.

### Taking a photo

1. In Idle mode, press the **Menu** soft key.

2. Select **Camera** → **Take photos**.

3. Aim the lens at the subject and make any desired adjustments.

4. Press to take a photo.

5. Press the **Save** soft key to save the photo, or press the **Cancel** soft key to delete the photo.

6. After saving the photo, press the soft key to take another photo.

**Note:** After taking a photo, you may be unable to save the photo, depending on your phone's memory capacity. Delete old photos to free up memory.

### Quick feature reference

This section provides brief explanations of features on your phone.

| Feature                | Description   | Select  |
|------------------------|---|---|
| Find a contact         | Search for contacts in Phonebook.   | Phonebook > Search                                  |
| Voicemail              | Access your voicemail server and listen to messages on the network.   | Menu > Messages > Text messages > Voice mail        |
| Broadcast message      | Change settings for the service and access broadcast messages.  | Menu > Messages > Text messages > Broadcast         |
| MMS profile            | Select or configure a connection profile to be used for MMS.  | Menu > Messages > Multimedia messages > MMS profile |
| Push messages          | Change the settings for the service, and access or delete push messages.                                    | Menu > Messages > Push messages                     |
| SOS messages           | Activate the SOS message feature. Enter recipients and select the repeat mode.                              | Menu > Messages > SOS message                       |
| Web browser            | Launch and configure the web browser.   | Menu > Funbox > WAP browser                         |
| FM radio               | Listen to music or news via the FM radio on your phone. You must connect the supplied headset to the phone. | Menu > Funbox > FM Radio                            |
| Access media files     | Access games, sounds, images in your phone's memory.  | Menu > Funbox > Games, Sounds, Images,              |
| Delete all media files | Delete games, sounds, images in each media box, or all media files at once.                                 | Menu > Funbox > Delete all                          |

#### Accessories and batteries

Use only Samsung-approved batteries and accessories, such as headsets and PC data cables. Use of any unauthorised accessories could damage your phone and may be dangerous.

**CAUTION** Risk of explosion if a battery is replaced by an incorrect type. Dispose used batteries according to the instructions.

At very high volume, prolonged listening to a headset can damage your hearing.

#### Qualified service

Only qualified service personnel may repair your phone.

### SAR information

Your wireless phone is a radio transmitter and receiver. It is designed and manufactured not to exceed the emission limits for exposure to radio frequency (RF) energy set by the European Union (EU) Council. These limits are part of comprehensive guidelines and establish permitted levels of RF energy for the general population. The guidelines are based on the safety standards that were developed by independent scientific organisations through periodic and through evaluation of scientific studies.

The standards include a substantial safety margin designed to assure the safety of all persons, regardless of age and health.

The exposure standard for wireless phones employs a unit of measurement known as Specific Absorption Rate (SAR). The SAR limit set by the EU Council is 2.0 W/kg. The highest SAR value for this model phone was 0.85 W/kg.

| Feature                             | Description   | Select  |
|-------------------------------------|---|---|
| Add a new contact                   | Add a new contact to Phonebook.   | Phonebook > New entry   |
| Search group                        | Search for Phonebook contacts in caller groups.   | Phonebook > Group search  |
| Change properties of a caller group | Select a ringtone for incoming calls and messages from members of a group. Also change the group name.            | Phonebook > Edit group  |
| Speed dial                          | Assign speed dial numbers (2 to 9) for eight of your most frequently dialled numbers.                             | Phonebook > Speed dial  |
| Delete Phonebook contacts           | Delete all Phonebook contacts stored in the phone's memory, on the SIM card, or both.                             | Phonebook > Delete all  |
| Phonebook memory status             | View the total number of Phonebook contacts in the phone's memory or on the SIM card.                             | Phonebook > Memory status   |
| SDN(Service Dialling Numbers)       | Access the list of service numbers assigned by your service provider. (Shows only if supported by your SIM card.) | Phonebook > SDN   |
| Use the SIM service                 | Use a variety of additional services offered by your service provider.  | Menu > SIM AT   |
| View recent calls                   | View the most recent calls you have dialled, received, or missed.   | Menu > Call records > Missed calls, Received calls, Dialled calls |
| Delete recent calls                 | Delete the call logs in each call type, or all logs at once.  | Menu > Call records > Delete all                                  |

| Feature              | Description   | Select                                    |
|----------------------|---|---|
| Funbox memory status | Check the amount of memory in use for games, sounds and images.   | Menu > Funbox > Memory status             |
| Alarm                | Set an alarm to sound at a specific time.   | Menu > Organiser > Alarm                  |
| Calendar             | Keep track of daily or monthly schedules.   | Menu > Organiser > Calendar               |
| Time and date        | Set the current time and date manually.   | Menu > Organiser > Time & Date            |
| Calculator           | Perform basic arithmetic functions.   | Menu > Organiser > Calculator             |
| Task list            | Create a list of tasks and assign a deadline to each task.  | Menu > Organiser > To do list             |
| Voice memo           | Record voice memos and listen them.   | Menu > Organiser > Voice memo             |
| Currency converter   | Do currency conversions.  | Menu > Organiser > Currency exchange      |
| Camera               | Take photos in various modes, and access saved photos in jpeg format. You can also check memory information for the photos. | Menu > Camera                             |
| IrDA                 | Send and receive data to or from IrDA-compatible computers or phones through the infrared port.                             | Menu > Phone settings > Infrared activate |
| Display settings     | Change settings for the display and backlight.  | Menu > Phone settings > Display settings  |

### Declaration of Conformity (R&TTE)

**Model description:** Portable Cellular Telephone (GSM 900/1800/1900)

**Model name:** SGH-X520

**Manufactured at:** Samsung Electronics Co., Ltd, 94-1, Imsoo-Dong, Gumi City, Kyung-Buk, Korea, 730-350\*

to which this declaration relates, is in conformity with the following standards and/or other normative documents.

**Safety** : EN 60950-1:2001  
**EMC** : EN 301 489-01 v1.4.1 (08-2002)  
 EN 301-489-07 v1.2.1 (08-2002)  
**SAR** : EN 50360:2001  
 EN 50361:2001  
**Network** : EN 301 511 v9.0.2 (03-2003)

We hereby declare that [all essential radio test suites have been carried out and that] the above named product is in conformity to all the essential requirements of Directive 1999/5/EC.

The conformity assessment procedure referred to in Article 10 and detailed in Annex[IV] of Directive 1999/5/EC has been followed with the involvement of the following Notified Body(ies):

BABT, Balfour House, Churchfield Road, Walton-on-Thames, Surrey, KT12 2TD, UK  
 identification mark: 0168

**The technical documentation kept at:**

Samsung Electronics Euro QA Lab.

**which will be made available upon request.**

**(Representative in the EU)**

**Place and date of issue:**

Samsung Electronics QA Lab.  
 Blackbushe Business Park, Saxony Way,  
 Yateley, Hampshire, GU46 6GG, UK  
 2006.10.18

**CE 0168**

Yong-Sang Park/S.Manager

\* It is not the address of Samsung Service Centre. For the address or the phone number of Samsung Service Centre, see the warranty card or contact the retailer where you purchased your phone.