



where solutions begin

I-Fly Wireless Access Point



Quick Start Guide

A02-WAP-54G/G2 (February 2004)V1.00

I-Fly Wireless Access Point

For more detailed instructions on configuring and using the I-Storm Lan Router ADSL, please refer to the online manual.

1.1 Package contents

Make sure that you have the following items:

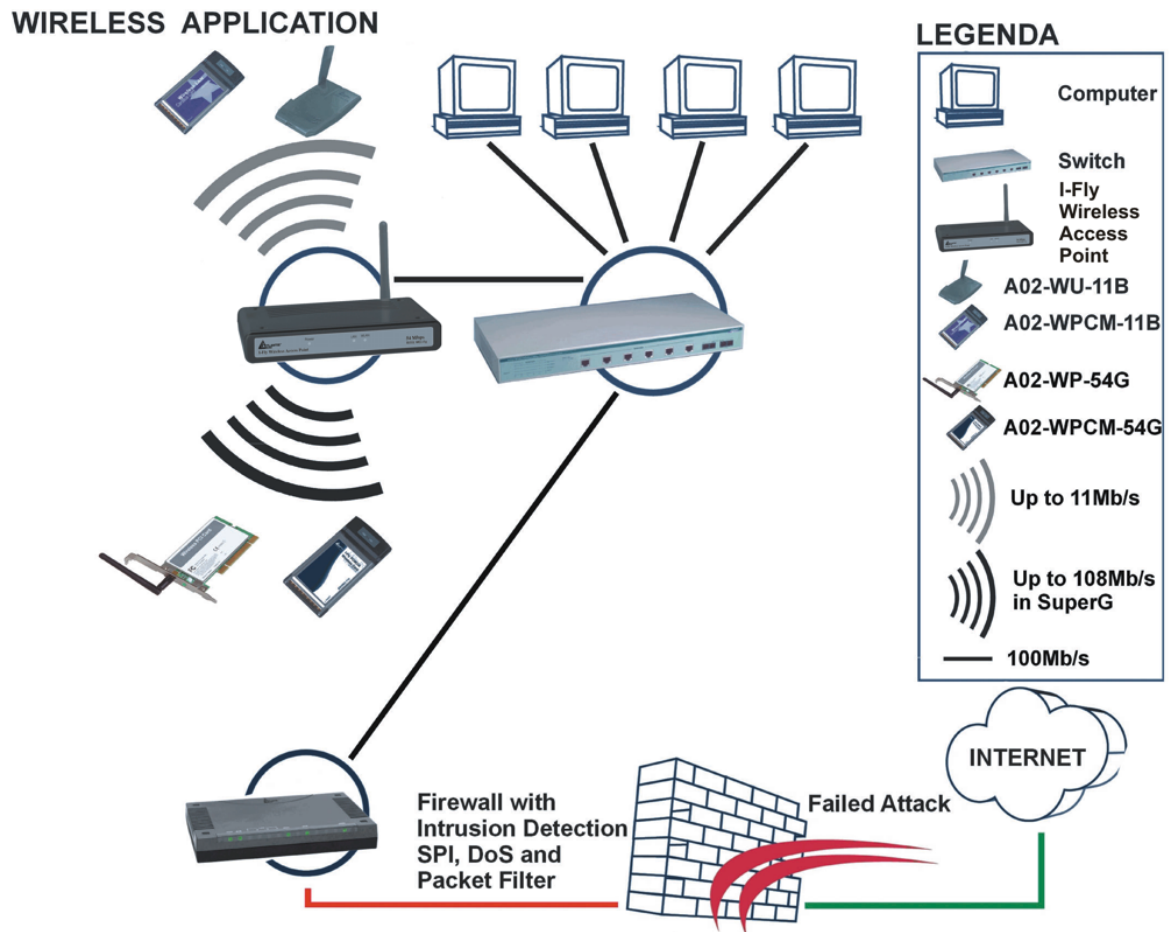
- I-Fly Wireless Access Point
- Network cable (CAT 5)
- Power Adapter AC-DC (5V, 2A)
- CD-ROM (with manual, software and driver)
- This Quick Start Guide

If any of the above items are missing, please contact your reseller.

1.2 Cabling

Connect to RJ45 ports by an Ethernet cable your PCs or Switch. Finally connect the Adapter to power inlet. Now the I-Fly AP will enter a self-test phase for about ten seconds. After this phase a solid light (POWER Led) indicates a proper connection to the power supply. Now you should see the LAN (WLAN) is solid or blinking.

I-Fly Wireless Access Point



1.3 The Front Panel LEDs

LED	MEANING
POWER	ON=Indicates proper connection to power supply. OFF= The unit is not receiving power
LAN	ON= Indicates connection is established. BLINKING= Data transmissions OFF= No LAN connections
WLAN	ON= Link is established BLINKING= Packet transmit or receive activity OFF= No Link activity

I-Fly Wireless Access Point

1.4 The Rear Ports

PORT	MEANING
POWER (Jack)	Receptor for the Power Adapter
LAN	Auto MDI/MDIX LAN ports automatically sense the cable type when connecting to Ethernet-enabled computers.
RESET	After the device has turned on, press it (10s) to reset the device or restore to factory default settings.

1.5 Default Settings

Before you configure this I-Fly Wireless Access Point, you need to know the following default settings.

Below the I-Fly Access Point default settings:

- User Name: **admin**
- Password: **admin**
- IP Address (**192.168.1.1**)
- Subnet Mask (**255.255.255.0**)
- DHCP Server: **inactive**
- Wireless: Channel **6**, **Open Shared**

1.6 IE Configuration

Now open IE, go to **Instruments** menu, select the **Connections** tab and select one of the following options:

I-Fly Wireless Access Point

- Never use remote connection
- Use remote connection if another network connection isn't available

1.7 Browser configuration

Open the web browser, enter the local port IP address of this I-Fly Router, which default at **192.168.1.1**, and click “Go” to get the login page.



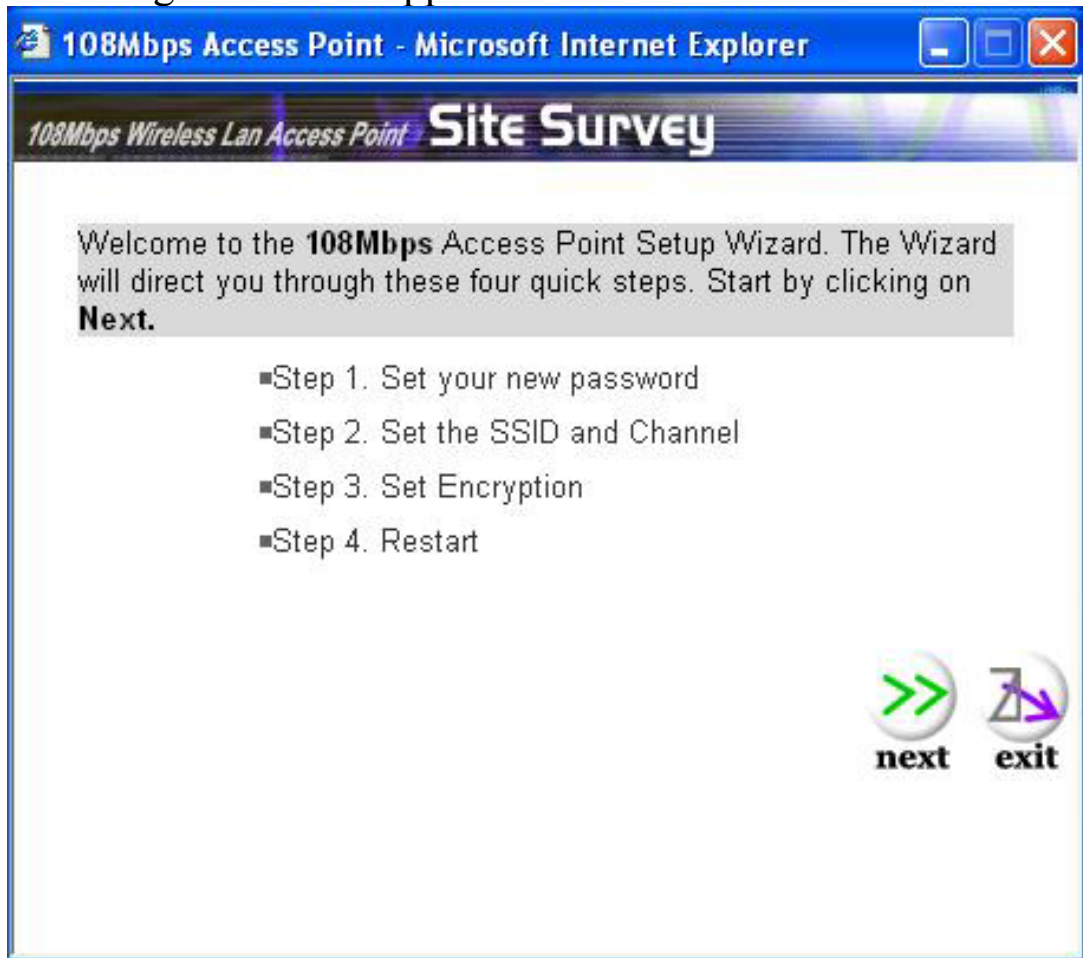
The default username is **admin**, password **admin** and click “OK” to continue.



If the Wizard Quick Setup doesn't automatically depart, press on the button Wizard.

1.8 Quick Setup with Wizard

Setup wizard is provided as the part of the web configuration utility. You can simply follow the step-by-step process to get your wireless router configuration ready to run in 4 easy steps by clicking on the “Wizard” button on the function menu. The following screen will appear. Please click “**Next**” to continue.



Step 1: Set your new Password

You can change the password as you like and then click “**Next**” to continue.

I-Fly Wireless Access Point

Step 2: Set SSID and channel

Type the SSID in the text box and select a communications channel. The SSID and channel must be the same as wireless devices attempting communication to the router.

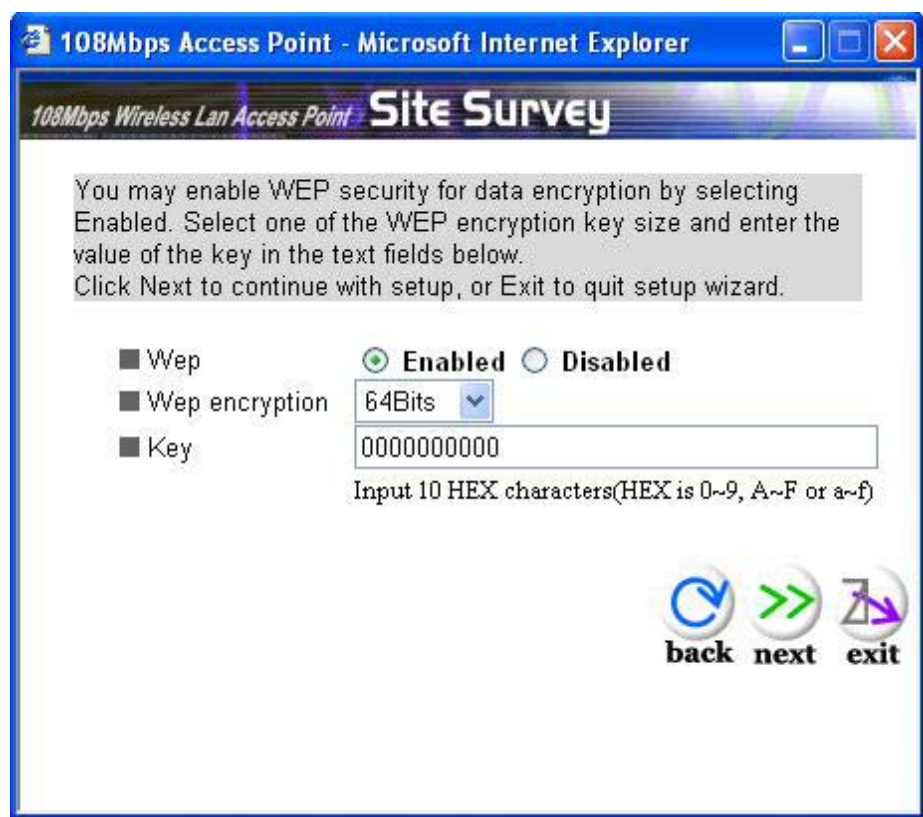
You can select the channel range of 1 to 13 for European (ETSI) domain.



Step 3: Set Eryption

To enable WEPsecurity, there are 2 types to select – 64bits and 128 bits. When it is selected, the key value must be entered in HEX format.

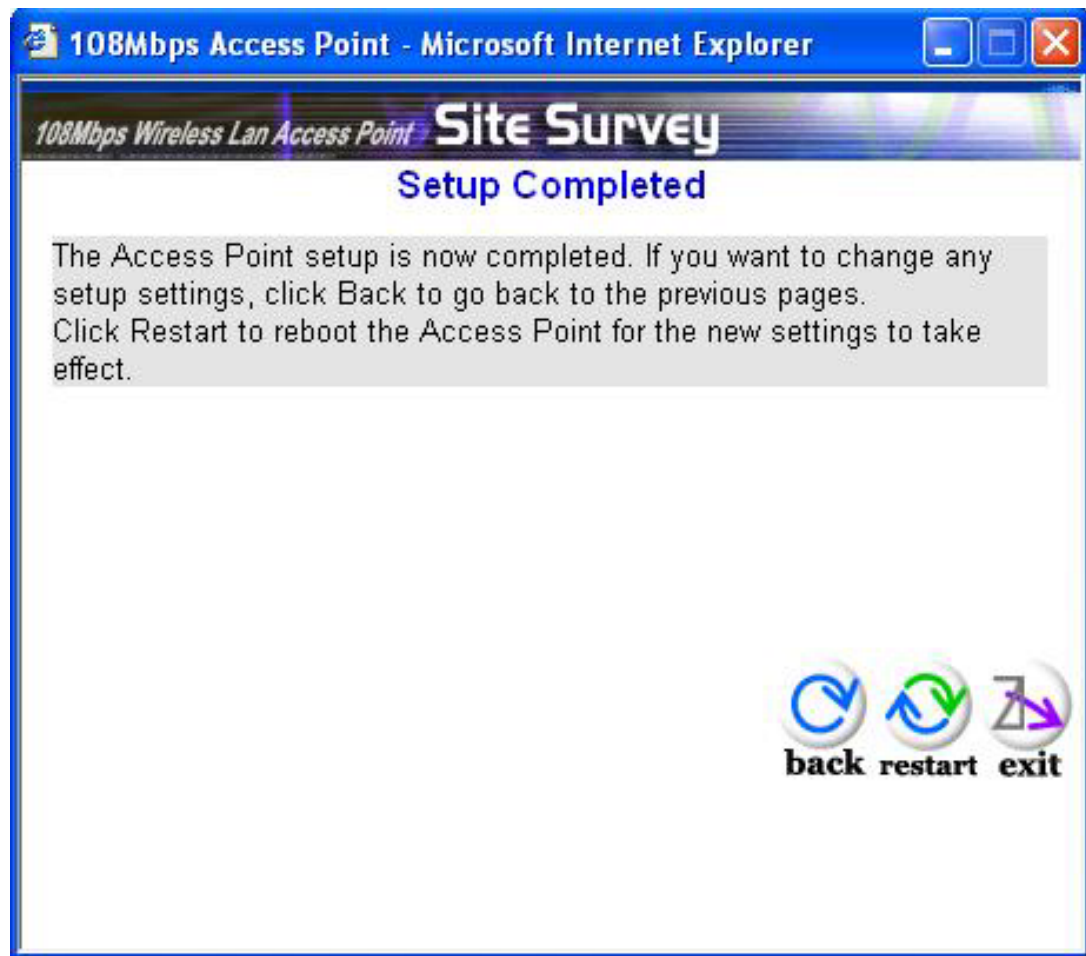
I-Fly Wireless Access Point



Step 4: Restart

The Setup wizard is now completed. The new settings will be effective after the Wireless AP restarted. Please click "**Restart**" to reboot the router. If you do not want to make any changes, please click "**exit**" to quit without any changes.

I-Fly Wireless Access Point



Click “**Close**” to finish the AP Wizard.