



HF-AUTO 1,500 Watt

Automatic Antenna Tuner

New!

Palstar is taking the low-power auto-tuner to the next level with the HF-AUTO. This unit uses quiet, continuously variable components to create a perfect antenna match, without noisy relays. It can tune with a mere 2 watts of power, yet can handle 1,500 watts. The HF-AUTO covers 1.8 through 54 MHz, tunes within 6 seconds and has a large, backlit LCD for easy readout of RF power, SWR, frequency and more. All the details on this American-made auto-tuner can be found at DXEngineering.com

PAS-HF-AUTO 1,500 Watt Automatic Antenna Tuner\$1,445.95



PAS-AT5K-HP 3,500 Watt Antenna Tuner

If you've already got a high quality meter and balun, but still want the high powered tuning ability of the AT5K, than this is the ideal solution. It has the same great specs of the AT5K, but without redundant features. This makes it easier on your wallet. You still get the legendary "Rock Crusher" performance.

PAS-AT5K-HP 3,500 Watt Antenna Tuner\$1,045.95


New!

PAS-AT-500 600 Watt Antenna Tuner

This compact manual tuner covers the 160 through 6 meter bands. Controls are easy-to-use and intuitive. Just like its higher power-rated counterparts, the AT-500 gives you a six-position switch to select from multiple feedlines and an external dummy load. It handles 600 watts PEP and 500 watts CW, with an impedance matching range of 20 to 1,500 Ω . A 4:1 ferrite current balun handles the balance line feeder and a 12 Vdc power connector (with cable) is included.

PAS-AT-500 600 Watt PEP Antenna Tuner\$479.95


New!

PAS-BT-1500A

1,500 Watt Double L

Balanced Antenna Tuner

The BT1500A is the ONLY 1,500 watt double-L network antenna tuner on the market today. With two tandem mounted ceramic roller inductors, this tuner offers unparalleled precision. If you're looking for a balanced tuner, this is a great high-power solution. The BT1500A is a highly specialized tuner, so be sure that it suits your application. Find the complete specs at DXEngineering.com.

PAS-BT1500A 1,500 Watt Double L Balanced Antenna Tuner\$699.95


New!

PAS-AT1500HB

RF Matching Network

If you do a lot of contesting, then you're changing frequencies often. This RF Matching Network makes things easier, allowing you to rapidly QSY from one band to another or between preset low SWR points in a single band. You can use several of these differential T-type tuners to create a versatile high-band antenna system. The AT1500HB can handle 1,500 watts and features a wide skirt control knob and fan cooling. For the complete specs on this and every Palstar product, visit DXEngineering.com.

PAS-AT1500HB RF Matching Network\$429.95


New!

600 Watt IntelliTuner™

Automatic Antenna Tuner

This tuner lets you rapidly tune any antenna—unbalanced, single-wire or balanced (with an external balun)—automatically. The tuner includes a highly efficient switching L-network with wide matching capability, 1.8 to 30 MHz coverage, cross-needle power meters, a port for an accessory remote control, a radio interface port, and heavy-duty 16 amp/1,000-volt relays. It is rated at 600 watts PEP SSB and 300 watts CW.

MFJ-994B\$339.95


MFJ


3 kW Edge Roller Antenna Tuner

This high power antenna tuner has a roller inductor "T" matching network that continuously tunes all frequencies from 1.8 through 30 MHz. It also features a built-in 3 kW peak or average detecting directional power meter. There are rear panel connectors for coaxial and wire feedlines. A heavy-duty, high-voltage insulated, current-type balun allows use with balanced feedlines.

AME-ATR-30\$559.95



AT5K 3,500 Watt Antenna Tuner

Nicknamed the "Rock Crusher," this American-made Palstar AT5K 3,500 Watt Antenna Tuner delivers an impressive 3,500 watts single tone continuous with low losses, and 5,000 watts PEP performance at certain impedance ranges. The AT5K tuner offers a wide impedance tuning range from 1.8 through 22 MHz with limited impedance tuning from 22 to 29.5 MHz.

The AT5K tuner provides balanced output with a high power 5,000 watt PTFE cable balun at the input of the tuner circuit. When the network is properly tuned, a 50 Ω impedance will be presented to the input and output of the balun for maximum efficiency. This tuners is designed to handle both balanced line feeds and unbalanced coax feedlines.

- Fan-cooled for extended 100% duty cycle operation
- Full-performance T-match circuit, impedance matching from 8 to 2,000 Ω
- Custom large value variable capacitors, 600pF at 6 kV
- 10 amp silver plated ceramic body roller inductor handle-driven crank
- 11-gauge aluminum chassis, powdercoated on front and top
- Power connector and cable included

PAS-AT5K 3,500 Watt Antenna Tuner\$1,145.95


New!

AT4K 2,500 Watt Antenna Tuner

The legendary AT4K 2,500 Watt Antenna Tuner built the Palstar reputation for high quality and durability. Updated for the 21st century, the AT4K now has a switchable, dual-movement active peak and peak hold wattmeter. The selection between unbalanced or balanced output is relay-switched with a front panel control on the AT4K.

The AT4K T-matching network uses a 1:1 unbalanced-to-balanced transformer in the input of the network. When the network is properly tuned, an impedance of 50 Ω is presented to the input and output of the balun.

- T-match circuit with impedance matching range from 8 to 2,000 Ω
- Custom large value variable capacitors, 460pF at 6 kV
- 10 Amp silver plated ceramic body roller inductor handle-driven crank
- 11-Gauge aluminum chassis, powdercoated on front and top

PAS-AT4K 2,500 Watt Antenna Tuner\$865.95



AT2KD Differential Antenna Tuner

Palstar's AT2KD Differential Antenna Tuner is American-made, with impedance-matching networks that optimize the performance of your antenna with your transceiver or SWL receiver. It offers 160 through 6 meter band coverage and handle up to 2,000 watts PEP power. Simply put, the AT2KD is the highest quality differential-T antenna tuner on the market!

This tuner has two impedance-matching controls with a 6:1 Vernier reduction drive for capacitor tuning with precision and accuracy. A turns counter-indexed inductor crank handle makes coarse tuning adjustments easy. Using a T-type circuit configuration makes adjustments simple because it reduces the number of knobs and eliminates false peaks. A 12 Vdc power connector and cable are provided for the meter circuit for each tuner.

- Input tuning: 5 kV dual-stator differential capacitor (430pF/13pF/430pF)
- Inductance: 25 uH roller inductor; 12-gauge wire wound on steatite ceramic core, silver plated bar/wheel
- Frequency coverage: 1.8-54 MHz
- Power: 2,000 W PEP SSB, 1,500 W single tone
- Impedance range 20 to 1,500 Ω , 1.8-30 MHz lower power for lower Z range

PAS-AT2KD Differential Antenna Tuner\$499.95


New!

AT2K 2,000 Watt Antenna Tuner

Building upon Palstar's impressive AT1500CV tuner, this AT2K 2,000 Watt Antenna Tuner features a new, smaller roller inductor, allowing the AT2K to tune from 160 meters to 6 meters. It can match dipoles, center fed doublets, Verticals, end-fed wire, delta loops, beams, Windoms, inverted vees, and many more antenna types.

The AT2K features a 6-position antenna selector switch and Peak/Peak Hold metering in two ranges, 300 and 3,000 watts. Standing Wave Ratio measurements are displayed with this illuminated cross-needle meter. Its chassis is made of 11-gauge aluminum with a powdercoated finish on the front and top cover.

- Impedance range 20 to 1,500 Ω from 160 to 6 meters (assuming resistive load)
- Low minimum custom variable capacitors, 15pF to 400pF at 4.5 kV
- 26 uH 5 kV ceramic body roller inductor with turns counter
- Silver plated inductor wheel shaft and contact wheel

PAS-AT2K 2,000 Watt Antenna Tuner\$498.95


New!

300, 600 and 1,500 Watt Remote Autotuners

These automatic tuners are mounted in durable, weather resistant hard-plastic cases for remote outdoor applications. They cover 1.8 to 30 MHz, use heavy-duty 16 amp/1,000-volt relays, and feature a highly efficient L-network. They also include the MFJ-4117 BiasTee Power Injector to send DC down your coax.

MFJ

MFJ-993BRT handles 300 watts SSB/CW power level and matches 6-1,600 Ω antennas
 MFJ-994BRT handles 600 watts SSB/CW power level and matches 12-800 Ω antennas
 MFJ-998RT handles 1,500 watts SSB/CW power level and matches 12-1,600 Ω antennas
 MFJ remote tuners let you quickly tune any antenna, balanced or unbalanced, automatically. It's a comprehensive automatic antenna tuner ideal for Multiband Verticals like the popular 43 foot models.

**MFJ 300 Watt Remote Autotuner**

The MFJ-993BRT IntelliTuner™ is a 300 watt remote automatic antenna tuning unit mounted in a durable hard-plastic case. Measuring just 9.25" W x 3" H x 14.25" D, it covers 1.8 to 30 MHz, has heavy-duty 16 amp/1,000-volt relays and is a highly efficient L-network. It also includes the MFJ-4117 BiasTee Power Injector to send DC/RF down your coax.

It's intended to be mounted outside at the feedpoint of your antenna, providing a 50 Ω match to your coaxial cable feedline and eliminating additional feedline loss caused by SWR.

The MFJ-993BRT lets you quickly tune any 6-1,600 Ω antenna, balanced or unbalanced, automatically.

MFJ-993BRT **\$299.95**

MFJ 600 Watt Remote Autotuner

The MFJ-994BRT IntelliTuner™ is a 600 watt remote automatic antenna tuning unit similar in size to the MFJ-993BRT. At 600 watts, it's a perfect match for Ameritron's solid state ALS-600/S solid state amplifier and popular tube-type AL-811/H amplifiers!

You can eliminate extra feedline loss caused by SWR by tuning your antenna outdoors at its feedpoint. This tuner includes the MFJ-4117 BiasTee Power Injector to send DC/RF down your coax.

The MFJ-994BRT lets you quickly tune any 12-1,600 Ω antenna, balanced or unbalanced, automatically.

MFJ-994BRT **\$379.95**

MFJ 1,500 Watt Legal Limit Remote Autotuner

The MFJ-998RT IntelliTuner™ is a comprehensive Full Legal Limit remote automatic antenna tuning unit. It lets you rapidly tune almost any unbalanced or single-wire antenna automatically. Balanced feedlines may be used with an MFJ-912 1.5 kW 4:1 balun connected to the MFJ-998RT antenna output.

MFJ's exclusive InstantRecall™, IntelliTune™ and AdaptiveSearch™ algorithms give you fast automatic tuning with more than 20,000 non-volatile VirtualAntenna™ memories. Each of the two antenna banks has four banks of memory; each memory bank has over 2,500 non-volatile memories for tuner settings. The banks allow you to save settings for several antennas, giving you the flexibility to move your tuner between antennas or to different locations without losing the old settings.

The tuner includes a highly efficient switched-L network with wide matching capability, 1.8 to 30 MHz coverage, backlit LCD display, and heavy-duty 16 amp/1,000-volt relays. It is rated at 1,500 watts SSB/CW and will match impedances from 12 to 1,600 Ω (SWR up to 32:1).

It includes the MFJ-4117 BiasTee Power Injector to send DC/RF down your coax.

MFJ-998RT **\$749.95**

**Remote Tuner Mounting Systems**

Properly mounting your MFJ tuner is important: DX Engineering gives you the best way to do it. These kits bolt directly to your vertical antenna and include all the parts you'll need to mount remote tuners. The kits are made from stainless steel for years of outdoor reliability. You can buy these systems individually if you've already got an MFJ tuner, or they're available bundled with either the MFJ-927 or MFJ-998RT tuner.

DXE-ATU-1	Remote Tuner Mounting System for MFJ-927	\$74.95
DXE-MBV-ATU-1	Remote Tuner Mounting System with MFJ-927	\$426.05
DXE-ATU-2	Remote Tuner Mounting System for MFJ-998RT	\$64.50
DXE-MBV-ATU-2	Remote Tuner Mounting System with MFJ-998RT	\$814.45

Dual 300/150 Watt IntelliTuner™ Automatic Antenna Tuner

This tuner lets you rapidly tune any antenna—balanced, unbalanced, or single-wire—automatically. The tuner is a comprehensive automatic antenna tuning center with SWR/wattmeter, antenna switch for two antennas, and a 4:1 current balun for balanced lines. Other features include a highly efficient switching L-network with wide matching capability, 1.8 to 30 MHz coverage, cross-needle power meters, backlight LCD display, a port for an accessory remote control, a radio interface port, and heavy-duty 16 amp/1,000-volt relays. The tuner is rated at 300 watts to match 6 to 1,600 Ω antennas (SWR up to 32:1) or 150 watts to match wider range of 6 to 3,200 Ω (SWR up to 64:1).

MFJ-993B **\$249.95**

200 Watt MightyMite IntelliTuner™

At just 6.5" x 2.15" x 8.25", the MightyMite complements today's compact HF transceivers like the IC-706MKIIG, IC-7000, FT-857D, DX-70TH and TS-50S. It can also be used as a stand-alone automatic antenna tuner for any transceiver that has an output power of 2 to 200 watts SSB/CW from 1.8-30 MHz, with antenna impedances from 6 to 1,600 Ω .

MFJ-925 **\$169.95**

200 Watt IntelliTuner™

The IntelliTuner™ lets you rapidly tune any antenna—unbalanced or single-wire—automatically. It is a comprehensive automatic antenna tuning center with a SWR/wattmeter and antenna switch for two antennas. The tuner includes a highly efficient switching L-network with wide matching capability, 1.8 to 30 MHz coverage, a radio interface port, and heavy-duty 10 amp/1,000-volt relays. It is rated at 200 watts SSB/CW.

MFJ-929 **\$199.95**

Interface Cables for MFJ Tuners

MFJ-5114I	Icom Rig Interface Cable for MFJ-998/929/928/927/925	\$19.95
MFJ-5114K	Kenwood Rig Interface Cable for MFJ-998/929/928/927/925	\$19.95
MFJ-5114Y	Yaesu Rig Interface Cable for MFJ-998/929/928/927/925	\$19.95
MFJ-5114Y3	Yaesu FT1000MP Rig Interface Cable for MFJ-929/998	\$19.95
MFJ-5114Y4	Yaesu FT2000 Rig Interface Cable for 929/998	\$19.95
MFJ-5124I	AutoTuner Radio Interface Cable for Icom	\$19.95
MFJ-5124K	AutoTuner Radio Interface Cable for Kenwood and compatibles	\$59.95
MFJ-5124Y	AutoTuner Radio Interface Cable for Yaesu and compatibles	\$59.95



Powermaster Battery Isolator

We've all been there: a busy Field Day or DXpedition. You make plenty of contacts while your gear sips a steady diet of voltage from your car's auxiliary battery. When it's time to leave—your car won't start!

Using an auxiliary battery doesn't always protect your primary battery from draining. Powermaster's Battery Isolator prevents this unwanted drain. It ties your batteries together, allowing them both to charge from your engine's alternator. Since your auxiliary battery is isolated, it won't drain the charge from your primary battery in the event of excess load.

Use Powermaster's Battery Isolator when you're operating off your vehicle's battery power and keep yourself from being stranded.

PWM-903 Powermaster Battery Isolator \$109.97

Powerpole Connector Crimping Tool

This tool makes the crimping process much less taxing while assuring rock-solid and reliable crimps. More leverage and cushioned grips mean less stress on your hand, too.

It handles 15, 35 and 40 amp Powerpole sizes and includes a contact positioner for a proper crimp every time.

WMT-58568-1049 Powerpole Connector Crimping Tool \$39.95

Battery Box Kit

- Ideal for a trunk-mounted second battery
- Kit includes cables and hardware

SUM-G1200A Battery Box Kit \$99.97

SUM-G1210 Battery Box only \$14.97

Anderson PowerPole® Connectors & Crimping Tool

Make power cables you can count on with PowerPole connectors. Solder or crimp them with the MFJ-7602 crimping tool. Use the 30 amp connectors with #12-16 AWG wire, the 45 amp connectors with #10-14 AWG wire. Wires smaller than #12 AWG require soldering.

MFJ-11C06 30 Amp Connectors, 6 sets \$6.95
DXE-PP30 30 Amp Connectors, 10 sets \$12.95
DXE-PP45 45 Amp Connectors, 10 sets \$17.95
MFJ-7602 Crimping Tool \$14.95

Power Wire, 2 Conductor Zip Cord

Zip Cord is two-conductor cord which is typically used for low voltage DC power wiring circuits. The red and black colors make it simple to identify polarity for DC applications.

DXE-PW-8 Power Wire, 8-gauge per foot \$1.49
DXE-PW-10 Power Wire, 10-gauge per foot \$1.19
DXE-PW-12 Power Wire, 12-gauge per foot \$0.89
DXE-PW-14 Power Wire, 14-gauge per foot \$0.59

Klein Tools KLEIN TOOLS, INC.

Klein-Kurve Wire Stripper/Cutter

The Klein-Kurve wire strippers are ideal for stripping solid (10-18 AWG) and stranded (12-20 AWG) wire cleanly and easily. The 7 1/8 inch strippers also have precise shear-type blades to neatly cut copper wire, easy-to-read markings on both sides, and extra-soft grips and curved handles for comfort.

KLE-11055 Klein-Kurve Wire Stripper/Cutter \$17.16

3/4 Inch Crimping/Cutting Tool

This Klein crim ping and cutting tool crimps insulated and non-insulated connectors. The crimping die is marked for insulated and non-insulated solderless terminals and connectors, and accommodates 10-22 AWG wires. The tool has a specially hardened wire cutter in the nose, a tapered nose design for working in confined spaces, a hot-riveted joint for smooth action, and plastic-dipped, cushioned handles for comfort.

KLE-1005 Crimping/Cutting Tool \$26.02

Automatic Wire Stripper/Crimper/Cutter

This DXE-Approved Wire Stripper uses a spring-loaded design to make quick work of wires ranging from 24- to 10-gauge. Just insert the wire, squeeze the handle, and listen for the click. That's the sound of another perfect wire stripping job performed in about 2 seconds—a fraction of the time it takes your pocket knife to do the same job. An adjustable wire length guide helps you make uniform strips, and the built-in wire cutter and crimper help you complete your wiring job.

SUM-900031 Automatic Wire Stripper/Crimper/Cutter \$18.97

Battery Tender Systems

If you're running a high-power mobile rig, dual batteries or a battery-powered standalone EMCOMM trailer, it's a good idea to take care of your battery. Deltran offers you several fantastic options in the Battery Tender line. Much better than simple trickle chargers, these units are packed with features to ensure that you'll have plenty of reliable DC on hand when you need it.

Battery Tender Plus

Designed to charge and maintain batteries at the proper storage level, the Battery Tender Plus is the flagship of Deltran's Battery Tender line. Using a three-step charging mode (bulk charge, absorption and float), the Battery Tender Plus keeps your battery charged without the damaging effects of a basic trickle charger. It features a quick-connect harness, reverse polarity protection and auto-switching between charging modes. It even reacts to ambient temperatures, adjusting charging power to ensure that your battery is ready to go, when you need it.

DTN-021-0128 Battery Tender Plus \$51.87

Battery Power Tender Plus

The Battery Power Tender Plus can charge and maintain both sealed maintenance-free batteries and traditional lead-acid batteries. Its four-step charging program is microprocessor-controlled to avoid damaging your battery while charging, and it features reverse polarity protection for trouble-free use.

DTN-0220142DLWHB Battery Power Tender Plus \$101.20

Battery Tender Waterproof 800

Great for the field, the Battery Tender Waterproof 800 Charging System packs 800 mA of charging power into a compact package. It will constantly monitor your battery, making sure that it maintains optimum performance levels. The Waterproof 800 features short circuit and reverse polarity protection and resists the elements for years of trouble-free use.

DTN-022-0150DLWH Battery Tender Waterproof 800 \$39.33

Battery Tender Junior

If you're small on space but big on power demands, ensure you have a steady supply of DC with Deltran's Battery Tender Plus Junior. It has many of the powerful features of its big brothers in a small, extremely portable and lightweight package. It's spark-proof, with reverse polarity protection and a two-color LED indicates your battery's charging state.

DTN-021-0123 Battery Tender Junior \$25.30

DC Power Strips

MFJ-1117 High Current DC Multiple Outlet Strip

This power strip lets you power four HF/VHF radios—two at 35 amps each and two at 35 amps combined—from your transceiver's main 12 Vdc power supply.

The strip has four pairs of heavy-duty, 35 amp five-way binding posts for your transceivers. Each pair is fused, RF bypassed, and spaced for standard dual banana plugs. The unit features a heavy-duty aluminum housing. Six feet of eight-gauge color-coded cable with ring tongue terminals included.

MFJ-1117 High Current Multiple Outlet Strip, 35 Amps Total \$64.95

MFJ-1124 PowerPole® Power Distribution Strip

This heavy-duty power distribution strip has a total of six outlets. Outlets 1-4 are Anderson PowerPole, each rated at 40 amps. Outlets 5 and 6 are 35 amp, high current binding posts. You can fuse each outlet as needed to protect your accessories or transceiver. The strip uses widely available ATC/ATO automobile fuses that plug in from the outside. The fuses can be used for 6, 12, and 24 Vdc systems. The built-in, eight-gauge DC input cable is six feet long with 5/16 ring terminals. The RF-tight aluminum cabinet has mounting ears and a ground post with wing nut. Installed fuses: one each 1 amp, 5 amp, and 40 amp (main), two each 10 amp and 25 amp. Four pairs of 40 amp PowerPole contacts and five fuses (1 amp, 5 amp, 25 amp, and two 10 amp) included.

MFJ-1124 PowerPole Power Distribution Strip \$64.95

No RF Hash! These power supplies are clean! Your buddies won't hear any RF hash on your signal...and you won't hear any from your receiver either. Some other competing power supplies may generate RF hash in your transmitted and received signal. MightyLite Switching Power Supplies meet all FCC Class B regulations.

MFJ

MFJ-4035MV **30/35 Amp Regulated** **Linear DC Power Supply**

A massive 19.2 pound transformer makes this heavy-duty power supply ideal for powering your entire station, including your 100 watt transceiver and all accessories. It delivers 35 amps maximum/30 amps continuous with load regulation better than 1%. Ripple voltage is less than 30 mV. No RF hash!



The unit has over-voltage, foldback short circuit, and over-temperature protection systems. Cooling fan speed increases as load current increases to keep components cool. It has a front panel voltage adjustment (1 to 14 Vdc) with a convenient detent set at 13.8 Vdc. The front panel meters let you monitor voltage and current. Three sets of output terminals include a pair of heavy-duty, five-way binding posts for HF/VHF rigs. Two pairs of quick-connects for accessories, covered cigarette lighter socket and front panel fuse holder included. Unit plugs into any 110 Vac wall outlet. Dimensions: 9.5" W x 6" H x 9.75" D.

MFJ-4035MV Linear Power Supply, 35 Amp, 13.8 Vdc **\$139.95**

MFJ-4125 **25 Amp Compact Switching** **Power Supply**

The smallest and lightest power supply in ham radio! This unit weighs only 2.9 pounds and measures just 5.5" W x 2" H x 5.75" D. It is ideal for the portable or temporary operation of a full 100 watt HF transceiver.



The five-way binding posts are for high-current radio connects, while a pair of speaker type push-on terminals is for low current accessories. It also features over-voltage and over-current protection modes. A whisper-quiet internal cooling fan generates tremendous airflow to help keep components cool.

- Switchable AC Input Voltage: 110 Vac at 47-62 Hz, 220 Vac at 47-63 Hz
- Super Regulation: Works with 85-135 Vac or 170-260 Vac input

MFJ-4125 Compact Switching Power Supply, 25 Amp, 13.8 Vdc **\$84.95**

MFJ-4225MV **MightyLite 25 Amp Switching** **Power Supply**

This unit features a front panel voltage control that allows you to vary output voltage from 9 to 15 Vdc and gives you a highly regulated voltage output, including 12 Vdc and 13.8 Vdc! The front panel also has five-way binding posts for heavy-duty use and a cigarette lighter socket for mobile accessories.

Large, brightly illuminated 3" dual meters make it easy to monitor load voltage and current. A whisper-quiet internal fan efficiently cools your power supply.



MFJ-4225MV MightyLite Switching Power Supply, 25 Amp, 13.8 Vdc **\$99.95**

MFJ-4245MV **MightyLite 45 Amp Switching** **Power Supply**

It fits in the palm of your hand—and is powerful enough to run your HF or 2M/440 MHz radio and accessories! This 45 amp MightyLite weighs just 5.5 lbs., seven times lighter than an equivalent conventional power supply. That means no more picking up and hauling around heavy, bulky supplies.



MFJ-4245MV MightyLite Switching Power Supply, 45 Amp, 13.8 Vdc ... **\$149.95**

AC/DC **Power Protectors**

Proper protection from lightning strike power surges is accomplished on two levels: First, an AC shunt protector should be installed at your single point ground (SPG) location. Second, connect your gear to an AC Series protector, also tied to SPG. Keeping your equipment plugged into the same outlet and grounded to the same point is the best way to ensure that it is all at the same electrical potential.

Polyphaser offers excellent AC Series Protectors that install in-line with your sensitive equipment. These protectors have a master on/off switch and circuit breaker for extra protection. They can also handle multiple strikes. The housing mounts to the DXE-CU-SPGP grounding plate and ties the plate to your SPG.

Polyphaser offers excellent AC Series Protectors that install in-line with your sensitive equipment. These protectors have a master on/off switch and circuit breaker for extra protection. They can also handle multiple strikes. The housing mounts to the DXE-CU-SPGP grounding plate and ties the plate to your SPG.

PPR-PLDO120US20A AC Series Protector, 120 Vac, 20A..... **\$229.00**
PPR-PLDO120US15A AC Series Protector, 120 Vac, 15A..... **\$209.00**
DXE-CU-SPGP Single Point Ground Plate **\$189.95**

PolyPhaser
CORPORATION

AME-SPS-75MV **75 Amp Switching** **Power Supply**

This power supply provides 75 amps continuous output current—ideal for use with Ameritron's ALS-500M 500 watt solid state amplifier. It has less than 100 mV peak-to-peak ripple under full load. Load regulation is better than 1.5% under full load. Other features include reverse-polarity protection, brownout input protection, over-current/over-temperature protection, and a thermally-controlled quiet fan. Output voltage is variable with metering for both voltage and current.

- Input: 108-132 Vac, 50/60 Hz
- Current Draw: 11 Amps

AME-SPS-75MV 75 Amp Switching Power Supply **\$259.95**

AMERITRON
®**DIAMOND**
ANTENNA**New!**

GZV4000 and GZV6000 **Switching Mode Power Supplies**

The GZV4000 provides a variable voltage output from 5 to 15 Vdc at 40 amps, while its higher-rated counterpart the GZV6000 gives you 1 to 15 Vdc at 60 amps.

These versatile power supplies look great and offer you rock-solid performance. The attractive front panel includes a selectable meter with post, snap-on and cigarette lighter outputs. The voltage control knob has a center 13.5 Vdc detent for precise adjustability. A built-in 8 W speaker makes these power supplies a versatile addition to your shack's setup.

DMN-GZV4000 Switching Mode Power Supply 40A **\$169.95**
DMN-GZV6000 Switching Mode Power Supply 60A **\$369.95**

**MFJ**

Compact DC **Power Supplies from MFJ**

These are the perfect supplies for portable and QRP operation. They are small enough to carry in briefcases or backpacks.

MFJ's 4115 Power Supply weighs a shade over one and a half pounds and easily fits into your suitcase. It can power most VHF/UHF or QRP radios while offering over-voltage and over-current protection. Hookup is via 5-way binding posts. It provides 13.8 Vdc at 17 amps, while accepting 90 to 130 Vac input.

The MFJ-4110 is the answer for the travelling operator. It plugs right in to a 110 Vac outlet with the included adapter and delivers 13.8 Vdc at 2 amps. An LED indicator lets you know it's working.

Though it's tailored for Yaesu's FT-817, the MFJ-4103 switching power supply can work with many other QRP rigs. In addition to over-current, over-temperature and over-voltage protection, the MFJ-4103 accepts 100-240 Vac at 47-63 Hz—which means you can plug it in virtually anywhere. Output is 13.8 Vdc at 2.89 amps, through a 2.1mm plug.

DXEngineering.com has detailed specs for every MFJ power supply.

MFJ-4115 MFJ Basic Switching Power Supply **\$59.95**
MFJ-4110 MFJ Power Supply **\$59.95**
MFJ-4103 MFJ Power Supply for FT-817 **\$49.95**

**LIMITED TIME OFFER:****Orders Over \$99 Ship Free**

Inside 48 contiguous United States via Fast Ground Delivery Service

**New!****Rack Mounted Linear Power Supplies**

Get consistent, reliable power using these rack mounted linear power supplies. These adjustable, solid state supplies are electronically regulated to offer less than 5mV peak to peak ripple. They incorporate fold-back current limiting and a heavy duty heat sink to ensure years of solid power delivery. Find full details at DXEngineering.com.

Rack Mounted Power Supplies with 11 to 15 Vdc Adjustable Output

Part Number	Description	Amps Continuous/Peak	Price
ASR-RM-12A	Power Supply	9A/12A at 13.8 Vdc	\$121.95
ASR-RM-12A-BB	Power Supply, Battery Backup	9A/12A at 13.8 Vdc	\$159.95
ASR-RM-12M	Power Supply, Dual Meters	9A/12A at 13.8 Vdc	\$161.95
ASR-RM-12M-BB	Supply, Dual Meters, Battery Backup	9A/12A at 13.8 Vdc	\$179.95
ASR-RM-20A	Power Supply	16A/20A at 13.8 Vdc	\$164.95
ASR-RM-20A-BB	Power Supply, Battery Backup	16A/20A at 13.8 Vdc	\$179.95
ASR-RM-20M	Power Supply, Dual Meters	16A/20A at 13.8 Vdc	\$169.95
ASR-RM-20M-BB	Supply, Dual Meters, Battery Backup	16A/20A at 13.8 Vdc	\$209.95
ASR-RM-35A	Power Supply	25A/35A at 13.8 Vdc	\$299.95
ASR-RM-35A-BB	Power Supply, Battery Backup	25A/35A at 13.8 Vdc	\$329.95
ASR-RM-35M	Power Supply, Dual Meters	25A/35A at 13.8 Vdc	\$284.95
ASR-RM-35M-BB	Supply, Dual Meters, Battery Backup	25A/35A at 13.8 Vdc	\$369.95
ASR-RM-50A	Power Supply	37A/50A at 13.8 Vdc	\$339.95
ASR-RM-50A-BB	Power Supply, Battery Backup	37A/50A at 13.8 Vdc	\$399.95
ASR-RM-50M	Power Supply, Dual Meters	37A/50A at 13.8 Vdc	\$369.95
ASR-RM-50M-BB	Supply, Dual Meters, Battery Backup	37A/50A at 13.8 Vdc	\$409.95
ASR-RM-60A	Power Supply	50A/55A at 13.8 Vdc	\$439.95
ASR-RM-60A-BB	Power Supply, Battery Backup	50A/55A at 13.8 Vdc	\$499.95
ASR-RM-60M	Power Supply, Dual Meters	50A/55A at 13.8 Vdc	\$449.95
ASR-RM-60M-BB	Supply, Dual Meters, Battery Backup	50A/55A at 13.8 Vdc	\$549.95

Rack Mounted Power Supplies with 22 to 32 Vdc Adjustable Output

Part Number	Description	Amps Continuous/Peak	Price
ASR-LSRM-18A	Power Supply	12A/18A at 28 Vdc	\$319.95
ASR-LSRM-18A-BB	Power Supply, Battery Backup	12A/18A at 28 Vdc	\$304.95
ASR-LSRM-18M	Power Supply, Dual Meters	12A/18A at 28 Vdc	\$304.95
ASR-LSRM-18M-BB	Supply, Dual Meters, Battery Backup	12A/18A at 28 Vdc	\$324.95
ASR-LSRM-25A	Power Supply	18A/25A at 28 Vdc	\$359.95
ASR-LSRM-25A-BB	Power Supply, Battery Backup	18A/25A at 28 Vdc	\$329.95
ASR-LSRM-25M	Power Supply, Dual Meters	18A/25A at 28 Vdc	\$369.95
ASR-LSRM-25M-BB	Supply, Dual Meters, Battery Backup	18A/25A at 28 Vdc	\$349.95
ASR-LSRM-35A	Power Supply	27A/35A at 28 Vdc	\$384.95
ASR-LSRM-35A-BB	Power Supply, Battery Backup	27A/35A at 28 Vdc	\$434.95
ASR-LSRM-35M	Power Supply, Dual Meters	27A/35A at 28 Vdc	\$529.95
ASR-LSRM-35M-BB	Supply, Dual Meters, Battery Backup	27A/35A at 28 Vdc	\$464.95

Rack Mounted Switching Power Supplies

The supplies use high-efficiency switching technology designed solely for precision communications equipment. For more versatility, they can accept 90 to 130 Vac or 180 to 264 Vac, at 50 or 60 Hz. These fan-cooled supplies deliver a consistent 13.8 Vdc.

Part Number	Description	Amps Continuous/Peak	Price
ASR-SRM-10	Power Supply	7A/10A at 13.8 Vdc	\$89.95
ASR-SRM-12	Power Supply	9A/12A at 13.8 Vdc	\$117.95
ASR-SRM-18	Power Supply	15A/18A at 13.8 Vdc	\$109.95
ASR-SRM-25	Power Supply	20A/25A at 13.8 Vdc	\$129.95
ASR-SRM-25M	Power Supply, Dual Meters	20A/25A at 13.8 Vdc	\$149.95
ASR-SRM-25-2	Dual SRM-25 Power Supplies	20A/25A at 13.8 Vdc	\$249.95
ASR-SRM-25M-2	Dual SRM-25M Power Supplies	20A/25A at 13.8 Vdc	\$289.95
ASR-SRM-30	Power Supply	25A/30A at 13.8 Vdc	\$169.95
ASR-SRM-30M	Power Supply, Dual Meters	25A/30A at 13.8 Vdc	\$189.95
ASR-SRM-30-2	Dual SRM-30 Power Supplies	25A/30A at 13.8 Vdc	\$269.95
ASR-SRM-30M-2	Dual SRM-30M Power Supplies	25A/30A at 13.8 Vdc	\$385.80



Astron Power Supplies Give You Consistent, Reliable Power Without Overloading Your Wallet!

New!

ASR-RS-35A

Astron's 13.8-volt linear power supplies make a powerful addition to your shack. These rugged, reliable units are electronically regulated to maintain low ripple at low-line input voltage. They include fold-back current limiting to protect your power supply from excessive current and continuous shorted output. Certain models feature crowbar over-voltage protection, heavy-duty heat sinks, separate current and volt meters or dual meters, and chassis-mounted fuses for extra protection against overheating and shorting. The "M" in the part number denotes models that include front panel volt and amp meters. For more info on the entire line of Astron's Power Supplies, please visit DXEngineering.com.

ASR-RS-7A	Power Supply, 5 Amps Continuous, 7 Amps Peak.....	\$72.95
ASR-RS-12A	Power Supply, 9 Amps Continuous, 12 Amps Peak.....	\$89.95
ASR-RS-20A	Power Supply, 16 Amps Continuous, 20 Amps Peak.....	\$109.95
ASR-RS-35A	Power Supply, 25 Amps Continuous, 35 Amps Peak.....	\$179.95
ASR-RS-50A	Power Supply, 37 Amps Continuous, 50 Amps Peak.....	\$271.95
ASR-RS-70A	Power Supply, 57 Amps Continuous, 70 Amps Peak.....	\$349.95
ASR-RS-20M	Power Supply, 15 Amps Continuous, 20 Amps Peak.....	\$129.95
ASR-RS-35M	Power Supply, 25 Amps Continuous, 35 Amps Peak.....	\$189.95
ASR-RS-50M	Power Supply, 37 Amps Continuous, 50 Amps Peak.....	\$299.95
ASR-RS-70M	Power Supply, 50 Amps Continuous, 55 Amps Peak.....	\$389.95

**VS Power Supplies**

Astron's VS line of 13.8-volt power supplies feature adjustable outputs, so you can tailor them specifically to your power needs. They also include separate front-panel volt and amp meters.

ASR-VS-20ML	Power Supply, 16 Amps Continuous, 20 Amps Peak	\$151.95
ASR-VS-35M	Power Supply, 25 Amps Continuous, 35 Amps Peak	\$204.95
ASR-VS-50M	Power Supply, 37 Amps Continuous, 50 Amps Peak	\$309.95

**New!****SS Power Supplies**

If you're looking for a 13.8-volt switching power supply, Astron offers several excellent performers in a low-profile desktop design. The "M" in the part number denotes models that include front panel volt and amp meters.

ASR-SS-25	Power Supply, 20 Amps Continuous, 25 Amps Peak.....	\$119.95
ASR-SS-25M	Power Supply, 20 Amps Continuous, 25 Amps Peak.....	\$139.95
ASR-SS-30	Power Supply, 25 Amps Continuous, 30 Amps Peak.....	\$139.95
ASR-SS-30M	Power Supply, 25 Amps Continuous, 30 Amps Peak.....	\$149.95

**New!****N2412-12 and N2412-24 DC-DC Converters**

Astron has packed these converters with some impressive features, including over-voltage, over-current and short circuit protection. You can also set up these converters to turn on with your ignition switch for hassle-free operation. They accept 22-33 Vdc input with a 13.8 Vdc output. The N2412-12 delivers 10 amps of continuous current with a 12 amp peak, while the N2412-24 delivers 20 amps continuous with a 24 amp peak.

ASR-N2412-12	DC-DC Converter, 12 Amp Peak.....	\$61.95
ASR-N2412-24	DC-DC Converter, 24 Amp Peak.....	\$89.95

**New!****SLS Series Switching Power Supplies**

Astron's SLS Series supplies are filtered specifically against RF interference, including the HF range. They also include an EMI filter, making them perfect for powering sensitive communications equipment. These supplies provide 28 Vdc, and include current limiting, over-voltage and thermal protection, and a fused input. The SLS Series supplies are also selectable for 115 or 220 Vac input at either 50 or 60 Hz for excellent versatility.

**New!**

Part Number	Description	Amps Continuous/Peak	Price
ASR-SLSRM-15	Rack Mounted SLS Power Supply	12.5A/15A at 28 Vdc	\$139.95
ASR-SLSRM-15-2	Dual Rack Mounted SLS Supplies	12.5A/15A at 28 Vdc	\$269.95
ASR-SLS-15	Standalone SLS Power Supply	12.5A/15A at 28 Vdc	\$124.95



SXA-07093

New!**DC/AC Modified Sine Wave Inverters**

If you just need reliable DC power for your tools, lights or appliances, then you don't need a full, pure sine converter. Save yourself some money and check out these modified DC/AC converters. They convert 12- or 24-volt DC input voltage into reliable 120-Volt AC. The modified sine design means you still get rock-solid power with a gentler bite on your wallet.

SXA-06204

**DC/DC Step-Up Converters**

Perfect for atypical or higher voltage DC applications, these negative-ground converters can give you clean DC power along with over-voltage and polarity protection, plus temperature-controlled current limiting. You can find the complete specs on each unit at DXEngineering.com.

SXA-06701

New!**Isolated DC/DC Converters**

If you need to convert precise DC voltages, even in positive-ground systems, Samlex offers several proven options. These converters feature over-voltage, reverse polarity and short-circuit protection, plus fold-back current limiting. They're ideal in mobile/portable installations where clean DC power can be scarce.

SXA-06044

New!**Mean Well DC/DC Fully Isolated Converters**

If you have a positive-ground system and need a reliable step-down converter to produce noise-free power, Samlex comes to your rescue. These converters are fully isolated, which means they're compatible with both negative- and positive-ground systems. They all also feature automatic short-circuit, overload and over-voltage protection.

DXE Number	Samlex Number	Description	Receptacles	Surge Capability	Price
SXA-07093	PSE-12125A	1,250 Watt Modified Sine DC/AC Inverter, 12 Vdc Input	2 AC	2,500 Watts	\$315.95
SXA-07103	PSE-12175A	1,750 Watt Modified Sine DC/AC Inverter, 12 Vdc input	2 AC	3,500 Watts	\$378.95
SXA-07113	PSE-12275A	2,750 Watt Modified Sine DC/AC Inverter, 12 Vdc Input	1 AC	4,500 Watts	\$546.95
SXA-07174	PSE-24275A	2,750 Watt Modified Sine DC/AC Inverter, 24 Vdc Input	1 AC	4,500 Watts	\$519.95
SXA-07184	PSE-24175A	1,750 Watt Modified Sine DC/AC Inverter, 24 Vdc Input	2 AC	3,500 Watts	\$314.95
SXA-07806	SAM-100-12	100 Watt Modified Sine DC/AC Inverter, 12 Vdc Input	1 AC 1 USB	200 Watts	\$16.95
SXA-07807	SAM-250-12	250 Watt Modified Sine DC/AC Inverter, 12 Vdc Input	1 AC 1 USB	500 Watts	\$24.95
SXA-07808	SAM-450-12	450 Watt Modified Sine DC/AC Inverter, 12 Vdc Input	2 AC 1 USB	900 Watts	\$37.95
SXA-07828	SAM-450-12E	450 Watt Modified Sine DC/AC Inverter, 12 Vdc	1 AC 1 USB	900 Watts	\$44.95
SXA-07809	SAM-800-12	800 Watt Modified Sine DC/AC Inverter, 12 Vdc Input	2 AC 1 USB	1,600 Watts	\$56.95
SXA-07812	SAM-1000-12	1,000 Watt Modified Sine DC/AC Inverter, 12 Vdc Input	2 AC	2,000 Watts	\$119.95
SXA-07817	SAM-1500-12	1,500 Watt Modified Sine DC/AC Inverter, 12 Vdc Input	2 AC	3,000 Watts	\$162.95
SXA-07827	SAM-2000-12	2,000 Watt Modified Sine DC/AC Inverter, 12 Vdc Input	3 AC	4,000 Watts	\$239.95
SXA-07836	SAM-7836	3,000 Watt Modified Sine DC/AC Inverter, 12 Vdc Input	3 AC	6,000 Watts	\$343.95

DXE Number	Samlex Number	Description	Input Range	Output Range	Price
SXA-06204	VTC305-12-24	DC/DC Step-Up Converter	10.5-28 Vdc	12-27 Amps at 24-27.5 Vdc	\$867.95
SXA-06214	VTC605-12-24	DC/DC Step-Up Converter	10.5-28 Vdc	20-45 Amps at 24-27.5 Vdc	\$769.95
SXA-06760	STEP 7	DC/DC Step-Up Converter	9-18 Vdc	7 Amps at 24 Vdc	\$106.95
SXA-06765	STEP 10	DC/DC Step-Up Converter	9-18 Vdc	10 Amps at 24 Vdc	\$147.95

DXE Number	Samlex Number	Description	Input Range	Output Range	Price
SXA-06701	IDC-100A-12	Step-Up Isolated DC/DC Converter	9-18 Vdc	8A at 12.5 Vdc	\$142.95
SXA-06706	IDC-100A-24	Step-Up Isolated DC/DC Converter	9-18 Vdc	4A at 24.5 Vdc	\$142.95
SXA-06708	IDC-100C-24	Isolated DC/DC Converter	30-60 Vdc	4A at 24.5 Vdc	\$142.95
SXA-06720	IDC-200A-12	Isolated DC/DC Converter	9-18 Vdc	16A at 12.5 Vdc	\$167.95
SXA-06721	IDC-200B-12	Isolated DC/DC Converter	20-35 Vdc	16A at 12.5 Vdc	\$167.95
SXA-06722	IDC-200C-12	Isolated DC/DC Converter	30-60 Vdc	16A at 12.5 Vdc	\$167.95
SXA-06723	IDC-200D-12	Isolated DC/DC Converter	60-120 Vdc	16A at 12.5 Vdc	\$167.95
SXA-06726	IDC-200A-24	Isolated DC/DC Converter	9-18 Vdc	8A at 24.5 Vdc	\$167.95
SXA-06728	IDC-200C-24	Isolated DC/DC Converter	30-60 Vdc	8A at 24.5 Vdc	\$167.95
SXA-06730	IDC-360A-12	Isolated DC/DC Converter	9-18 Vdc	30A at 12.5 Vdc	\$317.95

DXE Number	Samlex Number	Description	Input Range	Output Range	Price
SXA-06044	SD-150D-12	Fully Isolated DC/DC Converter	72-144 Vdc	12.5A at 12 Vdc	\$108.95
SXA-06054	SD-150C-12	Fully Isolated DC/DC Converter	36-72 Vdc	12.5A at 12 Vdc	\$108.95
SXA-06064	SD-150C-24	Fully Isolated DC/DC Converter	36-72 Vdc	6.25A at 24 Vdc	\$108.95
SXA-06104	SD-150B-24	Fully Isolated DC/DC Converter	19-36 Vdc	6.25A at 24 Vdc	\$108.95



SXA-14242



SXA-14008

New!

SXA-14002

**Mean Well Single Output Switching Power Supplies**

For a versatile supply that delivers reliable power levels, check out these offerings from Samlex. You can adjust both input and output voltage, making these power supplies handy tools in your shack or on your bench. They are well-filtered units that give you clean, reliable power without unwanted noise and RFI. They also offer over-voltage, over-current and short-circuit protection to keep your gear safe.

DXEngineering.com has more detailed specs on each of these supplies.

DXE Number	Samlex Number	Description	Power Input Range	Power Output Range	Price
SXA-14002	S-25-12	25 Watt Power Supply 2.1A at 12 Vdc	85-260 Vac	10.8-13.2 Vdc	\$32.95
SXA-14003	S-60-12	60 Watt Power Supply 5A at 12 Vdc	85-260 Vac	10.8-13.2 Vdc	\$43.95
SXA-14012	S-100F-12	100 Watt Power Supply 8.5A at 12 Vdc	85-370 Vac	10.8-13.2 Vdc	\$52.95
SXA-14004	S-150-12	150 Watt Power Supply 12.5A at 12 Vdc	85-260 Vac	10.6-13.2 Vdc	\$61.95
SXA-14022	S-320-12	320 Watts Power Supply 25A at 12 Vdc	85-260 Vac	10-13.2 Vdc	\$125.95
SXA-14005	S-25-24	25 Watt Power Supply 1.1A at 24 Vdc	85-260 Vac	21.6-26.4 Vdc	\$32.95
SXA-14009	S-60-24	60 Watt Power Supply 2.5A at 24 Vdc	85-260 Vac	21.6-26.4 Vdc	\$43.95
SXA-14006	S-150-24	150 Watt Power Supply 6.5A at 24 Vdc	85-250 Vac	21-28.4 Vdc	\$56.95
SXA-14008	S-320-24	320 Watt Power Supply 12.5A at 24 Vdc	85-260 Vac	21-28.4 Vdc	\$125.95
SXA-14125	SE-600-48	600 Watt Power Supply 12.5A at 48 Vdc	85-260 Vac	43-56 Vdc	\$195.95
SXA-14242	SE-100-48	1,000 Watt Power Supply 20.8A at 48 Vdc	85-370 Vac	43-56 Vdc	\$359.95

**Switching DC/DC Converters**

Going from 24 Vdc down to 13.8 Vdc is no problem with these reliable step-down converters. If you have an input voltage of 20-35 Vdc, these converters let your expensive gear sip a steady diet of clean, stable 13.8 Vdc. Designed for negative ground, heavy-duty applications, the converters all offer over-voltage, reverse polarity and short-circuit protection, plus temperature-regulated current limiting.

**New!**

SXA-06014

DXE Number	Samlex Number	Description	Output	Price
SXA-06014	SDC-15	DC/DC Converter	15A at 13.8 Vdc	\$61.95
SXA-06024	SDC-23	DC/DC Converter	20A at 13.8 Vdc	\$69.95
SXA-06034	SDC-5	DC/DC Converter	5A at 13.8 Vdc	\$33.95
SXA-06036	SDC-12	DC/DC Converter	12A at 13.8 Vdc	\$41.95
SXA-06174	SDC-30	DC/DC Converter	30A at 13.8 Vdc	\$112.95

New!**Rackmount Switching Power Supplies**

Do you have a rack in your shack? Here's a great way to get your power supply off of your desk without compromising your power needs. They all produce clean, reliable power and are available in a wide range of DC output levels. These power supplies come mounted on a two rack unit size plate and feature over-current, over-voltage and short-circuit protection to keep your gear safe.



DXE Number	Samlex Number	Description	Power Output	Price
SXA-03111	SEC-1223R1	Rackmount Power Supply 120 Vac	20A at 13.8 Vdc	\$169.95
SXA-03123	SEC-1223R2	Rackmount Dual Power Supplies 120 Vac	20A at 13.8 Vdc (x2)	\$249.95
SXA-03261	SEC-40BRM	Rackmount Power Supply with Battery Backup and Charger 120 Vac	40A at 13.8 Vdc	\$389.95
SXA-03271	SEC-60BRM	Rackmount Power Supply with Battery Backup and Charger 120 Vac	60A at 13.8 Vdc	\$449.95
SXA-03281	SEC-80BRM	Rackmount Power Supply with Battery Backup and Charger 120 Vac	80A at 13.8 Vdc	\$454.95
SXA-03291	SEC-100BRM	Rackmount Power Supply with Backup, Charger and Meter 120 Vac	100A at 13.8 Vdc	\$498.95
SXA-03312	SEC-40BRM-220	Rackmount Power Supply with Battery Backup and Charger 230 Vac	40A at 13.8 Vdc	\$568.95
SXA-03342	SEC-100BRM-220	Rackmount Power Supply with Battery Backup and Charger	100A at 13.8 Vdc	\$821.95
SXA-03364	SEC-2450BRM	Rackmount Power Supply with Backup, Charger and Meter	50A at 27.6 Vdc	\$529.95



SXA-03431



SXA-03435

**Desktop Switching Power Supplies**

Need a rock-solid 13.8 Vdc power supply that doesn't take up half of your shack? Samlex offers compact and reliable Desktop Switching Power Supplies. They're loaded with over-current, over-voltage and short-circuit protection and are well filtered to produce clean, noise-free power.

DXE Number	Samlex Number	Description	Power Output	Price
SXA-03051	SEC-1212	Desktop Power Supply, 120 Vac	10A at 13.8 Vdc	\$84.95
SXA-03052	SEC-1212CE	Desktop Power Supply, 230 Vac	10A at 13.8 Vdc	\$89.95
SXA-03061	SEC-1223	Desktop Power Supply, 120 Vac	23A at 13.8 Vdc	\$99.95
SXA-03062	SEC-3062	Desktop Power Supply, 230 Vac	23A at 13.8 Vdc	\$129.95
SXA-03431	SEC-1235	Desktop Power Supply, 120 Vac	30A at 13.8 Vdc	\$119.95
SXA-03435	SEC-3435	Desktop Power Supply with Dual Meters, 120 Vac	21.6-26.4 Vdc	\$125.95

Surge Protection Products

A power surge can enter your home through any electrical conductor. Whether it's a power grid anomaly or a lightning strike, you can protect your home. Even independent electrical circuits (a telephone line for instance) share ground paths—which opens the door for power spikes to enter every electrical device you've plugged in to your home's AC outlets. To help protect yourself from hazardous voltage spikes, DX Engineering offers several surge protection options.

DX Engineering Utility Enclosure Package

The Utility Enclosure Package is a high-impact thermoplastic enclosure ideal for outdoor mounting of all types of lightning protectors or other equipment. Its weather-tight design protects the components from rain and direct water spray. It resists degradation from environmental contaminants, chemical fertilizers and insecticide sprays that can ruin metallic housings.

The thermoplastic housing and wire entrance grommet material fire retardant and UV stabilized. The enclosure can be painted with latex or oil base paints if needed to blend it in with its location.

Mounting hardware, aluminum component mounting plate, and four weather tight large feed-through grommets for RG-213 and LMR-400 sized cable are included. Optional feed-through grommets for smaller cables are available. Exterior dimensions: 13" W x 14" H x 4" D.

DXE-UE-2P	Utility Enclosure Package	\$49.95
DXE-CFT-1P	Large Cable Feed-Through Grommets, pack of 6	\$14.95
DXE-CFT-2P	Small Cable Feed-Through Grommets, pack of 6	\$14.95



Transi-Trap Broadband Coaxial Surge Protectors

These gas surge arrestors protect sensitive equipment from the excessive voltage and current caused by static buildup or a lightning strike. The 50 Ω DC voltage pass-through design is perfect if you're using coaxial cable to carry both RF and DC voltage, like in an antenna switch. These protectors use a replaceable Arc-Plug™ cartridge that you can change in the field without tools. They feature a 1/4"-20 mounting stud for easy install.

The Defense Logistics Agency has assigned National Stock Number (NSN) 5920 01 5470278 to the model TT3G50 Coax Surge Protector and NSN 5325 01 5466841 to the 3G50 Arc-Plug cartridge for use in all U.S. Military and NATO applications worldwide.

ALF-ATT3G50	Protector with N-Connector, 3 GHz/200 Watts	\$59.95
ALF-ATT3G50HP	Protector with N-Connector, 3 GHz/2,000 Watts	\$59.95
ALF-ATT3G50U	Protector with SO-239, 500 MHz/200 Watts	\$49.95
ALF-3G50	Replacement Arc-Plug, 200 Watts	\$14.95
ALF-3G50HP	Replacement Arc-Plug, 2,000 Watts	\$14.95



Broadband Coaxial Lightning Protectors

These 50 Ω, DC-blocked protectors are great for general, single transmitter use in the 1.5 to 700 MHz frequency ranges. Available with either a bulkhead or flange mount, PolyPhaser's Lightning Protectors use a gas tube design that has no DC continuity between the center pins. PolyPhaser's Multi-Strike products pass all RF frequencies while blocking all DC—offering excellent protection from voltage spikes.

PPR-IS-50UX-CO	UHF Female, Flange, 2,000 W, 1.5-700 MHz	\$61.95
PPR-IS-50NX-CO	N Female, Flange, 2,000 W, 1.5-700 MHz	\$61.95
PPR-IS-B50LN-CO	N Female, Bulkhead, 2,000 W, 1.5-700 MHz	\$65.50
PPR-IS-B50LU-CO	UHF Female, Bulkhead, 2,000 W, 1.5-700 MHz	\$64.95
PPR-IS-B50HU-CO	UHF Female, Bulkhead, 3,000 W, 1.5-700 MHz	\$76.00



Copper Strap to Tower

The PolyPhaser TK clamp series has a stainless steel plate to go between the copper strap and galvanized tower leg to prevent corrosion due to dissimilar metals. For use with tower leg diameters from 5/8 inches to 3.25 inches.

PPR-TK-1	Strap to Tower Leg Ground Clamp, 5/8" to 1.25"	\$8.55
PPR-TK-2	Strap to Tower Leg Ground Clamp, 1.25" to 2.25"	\$8.55
PPR-TK-3	Strap to Tower Leg Ground Clamp, 2.25" to 3.75"	\$11.40
PPR-TK-4	Strap to Tower Leg Ground Clamp, 3.5" to 5"	\$11.40



ALPHA DELTA COMMUNICATIONS, INC.

Copper Ground Rod Clamp Kit

An uncompromising grounding kit that helps keep your station safe. Though it is designed to work specifically with your Alpha Delta ATT or TT series surge protectors, this system is also compatible with virtually any stud-type flange-mount coaxial surge protector. You can even connect up to four surge protectors for extra protection against lightning strikes. Made of solid copper, this clamp kit includes stainless steel hardware for added reliability and years of use at your shack.

ALF-UCGC	Copper Ground Rod Clamp Kit	\$49.95
----------	-----------------------------------	---------



Rotor Control Line Protector

This versatile unit protects rotor controllers using up to 8 lines by preventing lightning strike energy from entering the circuit. You can mount it to a tower leg or grounding rod using J1 or J2 clamps. This lightning protector has multi-strike capability and reacts faster than gas tubes.

- +/- 70 Vdc operating voltage
- +/- 82V turn-on voltage
- 2A maximum operating current
- 6.5kA maximum surge current
- 4 nanosecond turn-on time
- -40° to 185° F temperature range

PPR-IS-RCT	Rotor Control Protector	\$133.00
------------	-------------------------------	----------



Low Voltage AC 2-Wire Protector

The PPR-IS-SPTV protects low-voltage applications (like CCTV cameras) from lightning strikes. It has a fast response time with lower differential voltage and harmonic energies than gas tubes.

PPR-IS-SPTV	Low Voltage, 24 Vac AC 2-Wire Protector	\$75.05
-------------	---	---------



Lightning Surge Protector

This unique in-Line® design is impedance matched to 75 Ω and virtually transparent to both analog and bi-directional signals from DC to 1.0 GHz. The patented and proprietary gas tube construction has an integral failshort mechanism for a power-cross condition that shunts both your cable's center conductor and sheath for a common path to ground. The protection element resets after each over-voltage incident.

DXE-RLP-75FF	Lightning Surge Protector, 75 Ω, DC Pass, F Connectors	\$13.95
--------------	--	---------



Part Number	Description	Price
DMN-SP3000	Lightning Arrestor, DC-3000 MHz, 200 W Max, Type-N Female to Type-N Female	\$34.95
DMN-SP3000P	Lightning Arrestor, DC-3000 MHz, 400 W Max, Type-N Female to Type-N Male	\$41.95
DMN-SP3000W	Lightning Arrestor, DC-3000 MHz, Waterproof, Type-N Female to Type-N Female	\$41.95
DMN-SP1000	Lightning Surge Protector, DC-1000 MHz, 400 W Max, UHF Female to UHF Female	\$29.95
DMN-SP1000PW	Lightning Surge Protector, DC-1000 MHz, 400 W Max, UHF Female to UHF Male	\$34.95



ECLS-Series Band Clamps with Stud

The ECLS-Series clamps feature a 3/4 inch long, 10-24 welded stud for easy connection of feed wire, baluns, current chokes, etc. to tubular elements. Stainless steel hardware included.

Sold in packs of 2..... from \$9.99

See Page 34 for complete application list.



Ground Braid Assemblies

DX Engineering Ground Strap is available preassembled with lugs for both #10 and 1/4 inch bolt sizes. A grounding strap is ideal for grounding a rig, amp, etc. to a copper strip running behind the desk; the strip becomes the central ground point for the equipment. This central ground can be routed away with heavy copper strap to join any other similarly protected branches for single point grounding (SPG) lightning protection.

Other possible uses include noise reduction by grounding a vehicle exhaust, establishing a connection between a radial plate, balun, and a vertical antenna to keep current off of the feedline, and any custom grounding application where a reliable connection is needed.

Assemblies with 1/2 Inch Wide Braided Strap

DXE-TCB05-RT01	#10 Ring Lugs, 1'	\$4.75
DXE-TCB05-RT03	#10 Ring Lugs, 3'	\$5.75
DXE-TCB05-RT05	#10 Ring Lugs, 5'	\$6.75
DXE-TCB05-RT10	#10 Ring Lugs, 10'	\$9.75
DXE-TCB05-RT18I	1/4" Ring Lugs, 18"	\$5.75
DXE-TCB05-RT24I	1/4" Ring Lugs, 2'	\$6.75
DXE-TCB05-RT36I	1/4" Ring Lugs, 3'	\$7.75

3/4 Inch Wide Braided Strap

DXE-TCB075-RT18I	1/4" Ring Lugs, 18"	\$5.75
DXE-TCB075-RT24I	1/4" Ring Lugs, 2'	\$6.45
DXE-TCB075-RT03	1/4" Ring Lugs, 3'	\$7.75

Assemblies with 1 Inch Wide Braided Strap

DXE-TCB10-RT01	1/4" Ring Lugs, 1'	\$5.75
DXE-TCB10-RT18I	1/4" Ring Lugs, 18"	\$6.75
DXE-TCB10-RT24I	1/4" Ring Lugs, 2'	\$7.75
DXE-TCB10-RT03	1/4" Ring Lugs, 3'	\$8.75
DXE-TCB10-RT05	1/4" Ring Lugs, 5'	\$12.75
DXE-TCB10-RT10	1/4" Ring Lugs, 10'	\$18.75



Coaxial Cable Grounding Brackets

The CGB-Series Coax Grounding Brackets are a versatile solution for additional grounding of coaxial cable shields. The stainless steel bracket is supplied with a stainless steel V-bolt and hardware in your choice of two sizes for a solid connection to the tower leg. Each bracket has holes for use with DXE-363-SST bulkhead connectors, or chassis mount SO-239 connectors, or DXE-1023 for N connectors.

The Grounding Bracket is an ideal junction point for the coax pigtailed that form the rotor loop to connect to the downleads. The bracket can also be used at the base of the tower to provide a solid grounding point before the coax cable is routed away from the grounded tower. The bracket has serrated teeth to bite through paint and corrosion. Additional fasteners are supplied if you wish to extend a ground braid or copper strap for secure grounding.

DXE-CGB-150	Coaxial Cable Grounding Bracket, fits 1/2" to 1.50" O.D. tube	\$15.95
DXE-CGB-200	Coaxial Cable Grounding Bracket, fits 1" to 2" O.D. tube	\$15.95



Ground Strap

DX Engineering offers quality tinned copper braid in 5 widths for grounding applications. It is sold per foot to accommodate almost any project. Very long per-foot lengths may not be continuous—contact Customer Service to discuss your length needs if continuous length is required. The strap is available in these sizes:

DXE-TCB-038	3/8" wide x 1/32" thick	per foot \$0.45
DXE-TCB-050	1/2" wide x .030" thick	per foot \$0.60
DXE-TCB-063	5/8" wide x .030" thick	per foot \$0.80
DXE-TCB-075	3/4" wide x .040" thick	per foot \$1.10
DXE-TCB-100	1" wide x .045" thick	per foot \$1.25



Coax Shield Ground Kits

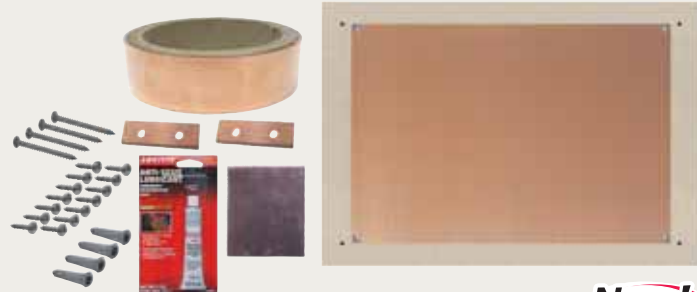
These kits provide a low inductance path for proper ground contact between a round member made from copper, brass, aluminum, tin, or steel to corresponding copper, brass, aluminum, tin, or steel grounding material. Examples: grounding the coax shield as the coax leaves the tower or connecting a round tower leg to the ground system. Three kits are available for various combinations of shield material to grounding material, and they fit coax shield or tower leg diameters from 1/4 inch to 2 1/8 inches. These kits include a perforated strap, an adjustable angle, 24 inch long tail strap, weatherproofing kit and all stainless steel brackets and hardware.

PPR-UNI-KIT-2CC	Copper to Copper Ground Kit	\$47.50
PPR-UNI-KIT-2CT	Copper to Aluminum Ground Kit	\$47.50
PPR-UNI-KIT-2TC	Aluminum to Copper Ground Kit	\$47.50
PPR-UNI-KIT-2TT	Aluminum to Aluminum Ground Kit	\$47.50

Weatherproofing Kit

Use PolyPhaser's Weatherproofing Kit PPR-WK-1 when mounting lightning protectors or making ground connections outdoors. The kit prevents moisture ingress and easily handles extreme temperatures, the sun's UV rays and salt spray.

PPR-WK-1	Weatherproofing Kit	\$8.55
----------	---------------------------	--------



Copper Grounding Plate Kit

The DXE-CU-SPGP provides a convenient means to mount multiple lightning protectors and tie them to a common ground. The plate is an 18 x 12 inch painted board with a 15 x 10 x 0.063 inch piece of copper mounted to it. The board should be mounted to wall studs set on 16 inch centers.

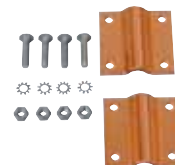
DXE-CU-SPGP	Copper Grounding Plate Kit	\$189.95
-------------	----------------------------------	----------

New!

Copper Strap to Copper Ground Rod Clamp

This clamp bonds a 5/8 inch ground rod to copper strap. 18-8 stainless steel hardware included.

DXE-58R-112S	Strap to Copper Ground Rod Clamp	\$29.95
--------------	--	---------



Ground Wire to Copper Ground Rods

The PolyPhaser J series clamps are used to connect ground wire to copper ground rods sized from 1/2 inch to 2 1/4 inches. They accept wire ranging from #2 stranded to #10 solid. These clamps are made of cast bronze and include 18-8 stainless steel hardware.

DXE-J-1	Wire to Rod Transition Clamp, 1/2" to 1 1/3"	\$14.95
DXE-J-2	Wire to Rod Transition Clamp, 1 1/2" to 2 1/4"	\$32.00



Copper Strap

Use copper strap to achieve a low inductance ground system. Copper strap has a larger surface area and lower inductance per foot than equivalent cross-section wire. Use ground strap to tie equipment back to a common ground point. Copper strap should also be used to make a non-resonant counterpoise for towers mounted on mountaintops or other rocky terrain. All copper strap is 2 inches wide and 0.011 inches thick.

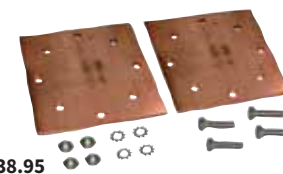
DXE-CS2-25	Copper Strap, 2" by 25'	\$57.95
DXE-CS2-50	Copper Strap, 2" by 50'	\$88.95
DXE-CS2-100	Copper Strap, 2" by 100'	\$179.95



Copper Strap to Copper Strap Clamp

The DXE-MSC-3 bonding clamp is ideal for bonding two copper straps together, for extending an existing run or to add drops to equipment. It accepts ground straps from 1 1/2 to 3 inches and includes 18-8 stainless steel hardware.

DXE-MSC-3	Multi-Strap Clamp	\$38.95
-----------	-------------------------	---------



Copper Cleaning Kit

Proper preparation of the copper surfaces and application of copper joint compound prior to bonding is essential to maintain the low resistance properties of the strap connection. The copper cleaning kit has everything needed to establish the bond. The kit includes a non-abrasive scrub pad, copper joint compound, and complete instructions.

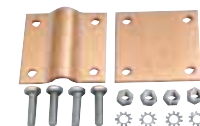
DXE-CCK	Copper Cleaning Kit	\$16.95
---------	---------------------------	---------



Copper Strap to Copper Wire Clamps

These wire bonding clamps provide a convenient way to bond heavy-gauge copper wire to copper grounding straps. These clamps handle from 6 AWG to 6/0 AWG, depending on the model. 18-8 stainless steel hardware is included.

DXE-1C-112S	Copper Wire to Strap Bonding Clamp, 6 to 1 AWG	\$29.95
DXE-10C-112S	Copper Wire to Strap Bonding Clamp, 1/0 to 6/0 AWG	\$34.95



DX Engineering U-Bolt Saddle Clamps

Our U-Bolt Saddle Clamps are ideal for use with round tubing. Unlike common hardware store clamps that are sized to fit pipe, our clamps are designed and sized to fit tubing.

The U-Bolt Saddle Clamps come with high strength, 18-8 grade stainless steel U-bolts that are long enough to attach tubing or components to thick mounting plates. The U-bolts are available in 1/4 inch, 5/16 inch and 3/8 inch as listed. Note that the 2 inch, 2.5 inch and 3 inch clamps are available with either 5/16 inch or 3/8 inch U-bolts.

The U-Bolt Saddle Clamp saddles are cast from high strength 535 aluminum, which has superior anti-corrosion properties. Unlike stamped or machined types, the saddles' rippled surface grips tubing closely for a secure fit.

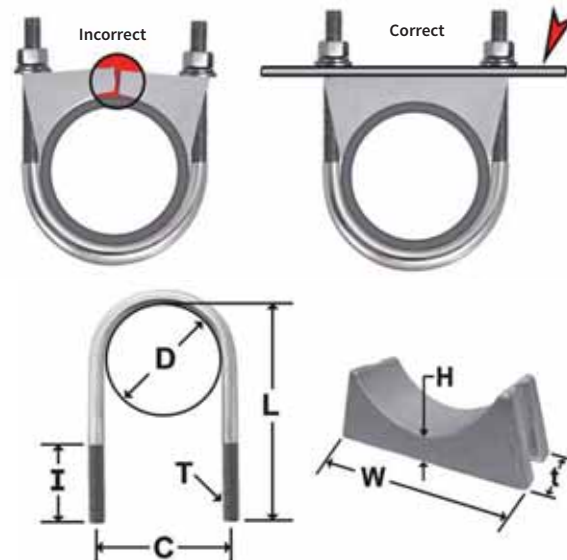
The U-Bolt Saddle Clamps are designed for use with mounting plates, which are available separately. The clamps are sold only as a set with aluminum saddle, stainless steel U-bolts, nuts, flat washers and lock washers.

The use of a lubricant and sealant, such as Never-Seez®, is highly recommended to achieve proper torque and prevent galling. DX Engineering sells replacement U-bolts with hardware kits.

Size	DXE Part Number	D	L	C	I	T	Hole Size	W	H	t	Price Each
0.50	DXE-SAD-050A	0.50	1.35	0.75	0.87	1/4-20	0.266 "H"	0.90	0.188	0.63	\$5.25
0.75	DXE-SAD-075A	0.75	1.81	1.00	0.87	1/4-20	0.266 "H"	1.13	0.188	0.75	\$5.65
1.00	DXE-SAD-100A	1.00	2.06	1.25	0.87	1/4-20	0.266 "H"	1.50	0.250	1.00	\$6.05
1.25	DXE-SAD-125A	1.25	2.37	1.50	0.87	1/4-20	0.266 "H"	1.75	0.250	1.00	\$6.85
1.50	DXE-SAD-150A	1.50	2.62	1.75	0.87	1/4-20	0.266 "H"	2.00	0.250	1.00	\$7.75
1.75	DXE-SAD-175A	1.75	3.00	2.00	1.00	1/4-20	0.266 "H"	2.31	0.250	1.00	\$8.90
2.00	DXE-SAD-200A	2.00	3.43	2.31	1.12	5/16-18	0.332 "Q"	2.62	0.375	1.00	\$10.05
2.00	DXE-SAD-200B	2.00	4.00	2.37	1.50	3/8-16	0.397 "X"	2.62	0.375	1.00	\$11.25
2.50	DXE-SAD-250A	2.50	4.18	2.81	1.25	5/16-18	0.332 "Q"	3.13	0.375	1.13	\$12.05
2.50	DXE-SAD-250B	2.50	4.75	2.87	1.75	3/8-16	0.397 "X"	3.13	0.375	1.13	\$13.55
3.00	DXE-SAD-300A	3.00	4.68	3.31	1.25	5/16-18	0.332 "Q"	3.62	0.375	1.25	\$13.60
3.00	DXE-SAD-300B	3.00	5.25	3.37	1.75	3/8-16	0.397 "X"	3.62	0.375	1.25	\$15.25
4.00	DXE-SAD-400A	4.05	5.56	4.43	1.50	3/8-18	0.397 "X"	4.80	0.438	1.50	\$34.70
4.50	DXE-SAD-450A	4.55	6.06	4.93	1.50	3/8-16	0.397 "X"	5.30	0.438	1.50	\$39.95

Suggested Hole Size: 0.266" is letter "H" drill bit, 0.332" is letter "Q" drill bit, and 0.397" is letter "X" drill bit. All U-Bolts are formed from premium 18-8 stainless steel.

All Saddles are cast 535 aluminum. All Saddle Clamp Sets are supplied with 18-8 stainless steel nuts and lock washers. Dimensions shown are in inches. Note: These are NOT Automotive Muffler Clamps.



Saddle clamps must be used on a flat surface or customer supplied backing plate. Personal injury and property damage can occur without proper installation. Always use a lubricant such as Never-Seez® or Anti-Seize to prevent the stainless steel hardware from seizing.

DX Engineering Clamps Have Hundreds of Uses!

DX Engineering U-Bolt, V-Bolt, and Band Clamps are very versatile. For example, we've seen the ECLS Studded Band Clamps used to fasten merchandise display signs to upright tubing. Have you used DX Engineering clamps for other, non-antenna projects?

We'd love to know about it—drop us a note and send pictures if you have them!

DX Engineering V-Bolt Saddle Clamps

Our V-Bolt Saddle Clamps are sized to fit ranges of tubing. The V-bolts are long enough to attach tubing or components to thick plates and are highly corrosion-resistant.

The V-Bolt Saddle Clamps are intended for use with a backing plate or mounting plate to retain the bolt spacing. The saddles' rippled surface will clamp tubing securely to a flat surface.

Features

- 18-8 stainless steel V-bolts with nuts, flat washers and lock washers
- Cast aluminum saddles with rippled surface
- Available in a number of size ranges

Tubing Recommendations

DXE-CAVS-1P: fits 1/2 inch to 1 3/4 inch O.D. tubing, 1/4-20 bolt

DXE-CAVS-11P: fits 1/2 inch to 1 3/4 inch O.D. tubing, 5/16-18 bolt

DXE-CAVS-2P: fits 1 inch to 2 inch O.D. tubing, 5/16-18 bolt

DXE-CAVS-3P: fits 2 inch to 3 inch O.D. tubing, 3/8-16 bolt

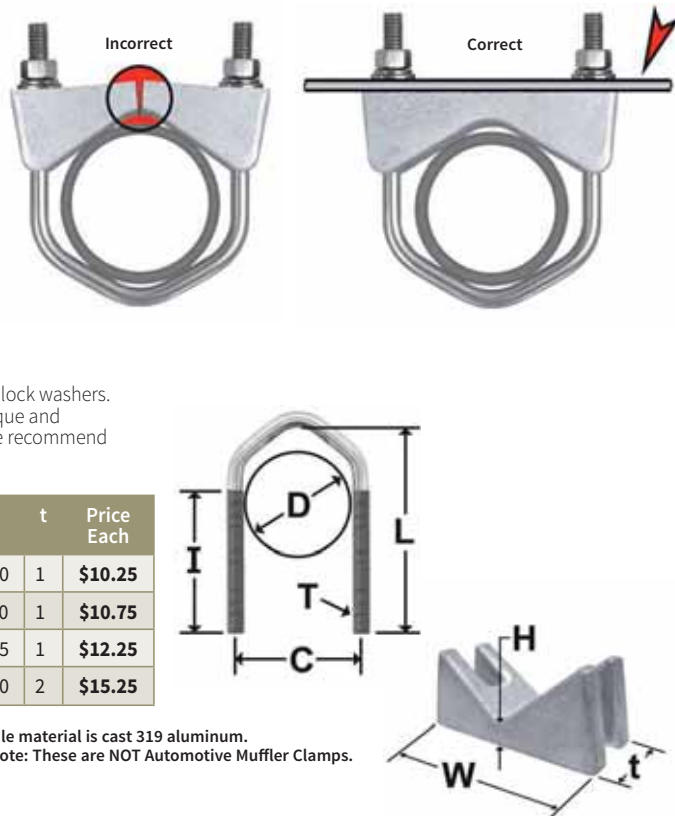
The clamps are sold only as a set with aluminum saddle, stainless steel V-bolts, nuts, flat washers and lock washers.

The use of a lubricant and sealant, such as Never-Seez®, is highly recommended to achieve proper torque and prevent galling. For high torque load applications where the tubing is subjected to twisting motion, we recommend using our U-Bolt Saddle Clamps.

Nominal Size	DXE Part Number	D	L	C	I	T	Hole Size	W	H	t	Price Each
0.50 to 1.75	DXE-CAVS-1P	1.75	3.438	1.968	2.313	1/4-20	0.266 "H"	2.313	0.250	1	\$10.25
0.50 to 1.75	DXE-CAVS-11P	1.75	3.438	2.063	2.313	5/16-18	0.332 "Q"	2.313	0.250	1	\$10.75
1 to 2	DXE-CAVS-2P	2.00	3.438	2.313	2.000	5/16-18	0.332 "Q"	2.835	0.375	1	\$12.25
2 to 3	DXE-CAVS-3P	3.13	4.610	3.500	1.750	3/8-16	0.397 "X"	4.250	0.500	2	\$15.25

All dimensions are in inches. Note: DXE-CAVS-1/11/2P saddle material is cast 535 aluminum, DXE-CAVS-3P saddle material is cast 319 aluminum.

Suggested Hole Size: 0.266" is letter "H" drill bit, 0.332" is letter "Q" drill bit, and 0.397" is letter "X" drill bit. Note: These are NOT Automotive Muffler Clamps.

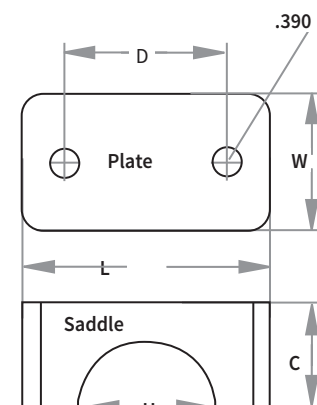


DX Engineering Super Duty Saddle Clamps

Our Super Duty Saddle Clamps are designed for applications where maximum clamping ability is needed. Super Duty Saddle Clamp Kits are constructed of two corrosion-resistant A356-T6 cast aluminum saddles with a cast stainless steel reinforcement plate. These clamps are the correct size to fit tubing closely and their rippled surface will grip the aluminum tubing for a secure fit that resists the ravages of weather.

Due to the wide variety of clamping applications where a Super Duty Saddle Clamp would be beneficial, we do not include mounting hardware, but we do offer armor-coated bolt sets separately. Super Duty Saddle Clamps are made to fit 3 sizes of tubing: 2 inch O.D., 2.5 inch O.D. and 3 inch O.D.

The use of a lubricant and sealant, such as Never-Seez®, is highly recommended to achieve proper torque and prevent galling.



Clamps Part Number	Tube O.D.	L	W	D	H	C	Price Each
DXE-SDS-200P	2	3.640	2.000	2.400	2.000	1.570	\$34.00
DXE-SDS-250P	2.5	4.150	2.250	2.900	2.500	1.820	\$41.00
DXE-SDS-300P	3	4.650	2.500	3.400	3.000	2.060	\$51.00

Bolt and Nut Sets

Armor-Coated Bolt Sets are available in 5 different bolt lengths (4.5 inch, 5 inch, 5.5 inch, 6 inch and 6.5 inch). They include Grade 8 hex head bolts (2), split washers (2), flat washers (2) and nuts (2).

DXE-SDSBOLT-4-5	4.5" Bolts.....	set \$5.25
DXE-SDSBOLT-5	5.0" Bolts.....	set \$5.50
DXE-SDSBOLT-5-5	5.5" Bolts.....	set \$5.75
DXE-SDSBOLT-6	6.0" Bolts.....	set \$6.00
DXE-SDSBOLT-6-5	6.5" Bolts.....	set \$6.25

**Our Clamps are Specified by
Scientific, Military &
Government Designers!
Used by Antenna Builders: Both
Commercial & Amateur!**

Highest Quality—Lasting Performance!

DX Engineering is famous for its Saddle Clamps—the ones with stainless steel U-bolts or V-bolts and matching cast aluminum saddles. The U-bolts are the exact size for inch-sized tubing O.D.; the saddles feature an as-cast roughness that keeps the tube from sliding.

Our Super Duty Saddle Clamps are designed for applications where maximum torque is needed to control large or unbalanced antenna arrays, or for other applications where other torque control products have proven inadequate.

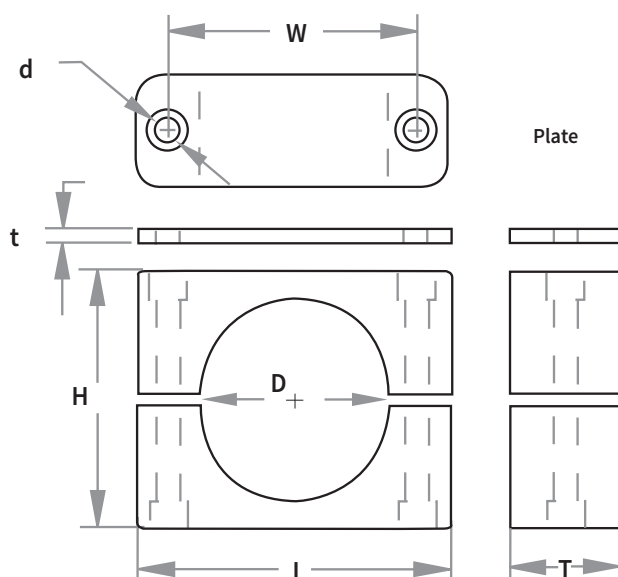
Our Resin Support Blocks are useful for securely mounting tubing to any flat surface while providing electrical insulation.

Whether you are building a Yagi from scratch, refurbishing a well-used "old friend," or experimenting with a new antenna project, DX Engineering can supply the best hardware for your application. You can find useful tips and complete dimensions for each clamp and bracket type at DXEngineering.com.

DX Engineering Resin Support Block Clamps

Our Resin Support Block Clamps are ideal for securing mounting brackets or plates to tubing, while also providing electrical insulation. That makes the clamps a good choice for electronic components. The clamps are sturdy and provide a strong, well-insulated mounting that is easy to construct. They are available in many sizes for most any project you might have—see chart below.

The Resin Support Block is shown with an optional stainless steel reinforcement plate. These plates provide additional stiffness and can also be used as sturdy hole-drilling templates.



Support Block Dimensions in Inches

Block Part Number	Tube O.D.	D	H	T	L	W	Reinforcement Plate Required	Price Each
DXE-RSB-I02500	1/4	1/4	1.050	1.185	1.350	0.784	DXE-RSB-DP-1	\$2.65
DXE-RSB-I03125	5/16	5/16	1.050	1.185	1.350	0.784	DXE-RSB-DP-1	\$2.85
DXE-RSB-I03750	3/8	3/8	1.050	1.185	1.350	0.784	DXE-RSB-DP-1	\$2.65
DXE-RSB-I05000	1/2	1/2	1.290	1.192	1.595	1.024	DXE-RSB-DP-2	\$2.90
DXE-RSB-I06250	5/8	5/8	1.290	1.192	1.595	1.024	DXE-RSB-DP-2	\$2.90
DXE-RSB-I03400	3/4	3/4	1.394	1.186	1.910	1.301	DXE-RSB-DP-3	\$3.10
DXE-RSB-I10000	1.000	1.000	1.394	1.186	1.910	1.301	DXE-RSB-DP-3	\$3.15
DXE-RSB-I11250	1.125	1.125	1.665	1.189	2.258	1.575	DXE-RSB-DP-4	\$4.70
DXE-RSB-I12500	1.250	1.250	2.292	1.182	2.760	2.050	DXE-RSB-DP-5	\$4.70
DXE-RSB-I11500	1.500	1.500	2.292	1.182	2.760	2.050	DXE-RSB-DP-5	\$4.70
DXE-RSB-I13400	1.750	1.750	2.674	1.184	3.394	2.600	DXE-RSB-DP-6	\$7.30
DXE-RSB-I20000	2.000	2.000	2.678	1.184	3.394	2.600	DXE-RSB-DP-6	\$7.30
DXE-RSB-I22500	2.250	2.250	2.904	1.184	3.394	2.600	DXE-RSB-DP-6	\$7.95

DXE-RSB-I11250



Reinforcement Plates Dimensions in Inches

Part Number	d	t	W	Each
DXE-RSB-DP-1	0.275	0.119	0.784	\$3.20
DXE-RSB-DP-2	0.275	0.119	1.024	\$3.55
DXE-RSB-DP-3	0.275	0.119	1.301	\$3.95
DXE-RSB-DP-4	0.275	0.119	1.575	\$4.25
DXE-RSB-DP-5	0.275	0.119	2.050	\$4.90
DXE-RSB-DP-6	0.275	0.119	2.600	\$5.65