



# **AVG 9.0 Email Server Edition**

## User Manual

### **Document revision 90.3 (17. 2. 2010)**

Copyright AVG Technologies CZ, s.r.o. All rights reserved.  
All other trademarks are the property of their respective owners.

This product uses RSA Data Security, Inc. MD5 Message-Digest Algorithm, Copyright (C) 1991-2, RSA Data Security, Inc. Created 1991.

This product uses code from C-SaCzech library, Copyright (c) 1996-2001 Jaromir Dolecek (dolecek@ics.muni.cz).

This product uses compression library zlib, Copyright (c) 1995-2002 Jean-loup Gailly and Mark Adler.



## Contents

<b>1. Introduction</b>	<b>4</b>
<b>2. AVG Installation Requirements</b>	<b>5</b>
2.1 Operation Systems Supported	5
2.2 Email Servers Supported	5
2.3 Hardware Requirements	5
2.4 Uninstall Previous Versions	6
2.5 MS Exchange Service Packs	6
<b>3. AVG Installation Process</b>	<b>8</b>
3.1 Installation Launch	8
3.2 License Agreement	9
3.3 Checking System Status	9
3.4 Select Installation Type	10
3.5 Activate AVG	10
3.6 Custom Installation - Destination Folder	11
3.7 Custom Installation - Component Selection	12
3.8 Custom Installation - DataCenter	13
3.9 Installing	14
3.10 Installation Complete	14
<b>4. E-mail Scanner for MS Exchange Server 2007/2010</b>	<b>15</b>
4.1 Overview	15
4.2 E-mail Scanner for MS Exchange (routing TA)	18
4.3 E-mail Scanner for MS Exchange (SMTP TA)	19
4.4 E-mail Scanner for MS Exchange (VSAPI)	20
4.5 Detection Actions	23
4.6 Mail Filtering	24
<b>5. E-mail Scanner for MS Exchange Server 2000/2003</b>	<b>25</b>
5.1 Overview	25
5.2 VSAPI 2.0	28
5.3 E-mail Scanner for MS Exchange (VSAPI)	28
5.4 Detection Actions	31
5.5 Mail Filtering	32



<b>6. AVG for Kerio MailServer .....</b>	<b>33</b>
6.1 Configuration .....	33
6.1.1 Antivirus .....	33
6.1.2 Attachment Filter .....	33
<b>7. Anti-Spam Configuration .....</b>	<b>38</b>
7.1 Anti-Spam Interface .....	38
7.2 Anti-Spam Principles .....	40
7.3 Anti-Spam Settings .....	40
7.3.1 Anti-Spam Training Wizard .....	40
7.3.2 Select Folder with Messages .....	40
7.3.3 Message filtering options .....	40
7.4 Performance .....	45
7.5 RBL .....	46
7.6 Whitelist .....	47
7.7 Blacklist .....	48
7.8 Advanced Settings .....	49
<b>8. AVG Settings Manager .....</b>	<b>50</b>
<b>9. FAQ and Technical Support .....</b>	<b>53</b>



## 1. Introduction

This user manual provides comprehensive documentation for **AVG 9.0 Email Server Edition**.

### **Congratulations on your purchase of AVG 9.0 Email Server Edition!**

**AVG 9.0 Email Server Edition** is one of a range of award winning AVG products designed to provide you with peace of mind and total security for your PC. As with all AVG products **AVG 9.0 Email Server Edition** has been completely re-designed, from the ground up, to deliver AVG's renowned and accredited security protection in a new, more user friendly and efficient way.

AVG has been designed and developed to protect your computing and networking activity. Enjoy the experience of full protection from AVG.

**Note:** *This documentation contains description of specific E-mail Server Edition features. Should you require information about other AVG features, please consult the user guide to Internet Security edition, which contains all the necessary details. You can download the guide from the <http://www.avg.com>.*



## 2. AVG Installation Requirements

### 2.1. Operation Systems Supported

**AVG 9.0 Email Server Edition** is intended to protect e-mail servers running under the following operating systems:

- Windows 2008 Server Edition (x86 and x64)
- Windows 2003 Server (x86, x64) SP1
- Windows 2000 Server SP4 + Update Rollup 1

### 2.2. Email Servers Supported

The following e-mail servers are supported:

- ***MS Exchange 2000 Server (with Service Pack 1 or higher) version***

**Note:** For Exchange 2000 Server - Service Pack 1 (or higher) needs to be applied before you can use the AVG engine; **AVG for MS Exchange 2000/2003 Server** uses the VSAPI 2.0 (or 2.5 with Exchange 2003 Server) application interface which is covered in this Service Pack.

- ***MS Exchange 2003 Server version***
- ***MS Exchange 2007 Server version***
- ***MS Exchange 2010 Server version***
- ***AVG for Kerio MailServer*** – version 5.x/6.x and higher

### 2.3. Hardware Requirements

Minimum hardware requirements for **AVG 9.0 Email Server Edition** are:

- Intel Pentium CPU 1.5 GHz
- 500 MB of free hard drive space (for installation purposes)
- 512 MB of RAM memory

Recommended hardware requirements for **AVG 9.0 Email Server Edition** are:

- Intel Pentium CPU 1.8 GHz



- 600 MB of free hard drive space (for installation purposes)
- 512 MB of RAM memory

## 2.4. Uninstall Previous Versions

If you have an older version of AVG Email Server installed, you will need to uninstall it manually before installing **AVG 9.0 Email Server Edition**. You must manually perform the uninstallation of the previous version, using the standard windows functionality.

- From the start menu **Start/Settings/Control Panel/Add or Remove Programs** select the correct program from the list of installed software. Be careful to select the correct AVG program for uninstallation. You need to uninstall the Email Server Edition before uninstalling the AVG File Server Edition.
- Once you have uninstalled the Email Server Edition, you can proceed to uninstall your previous version of AVG File Server Edition. This can be done easily from the start menu **Start/All Programs/AVG/Uninstall AVG**
- If you have previously used the AVG 8.x or older version, do not forget to uninstall also individual server plug-ins.

## 2.5. MS Exchange Service Packs

Since **AVG for MS Exchange 2000/2003 Server** uses the VSAPI 2.0/2.5 virus scanning interface, you must have the Service Pack 1 (or higher) for MS Exchange 2000 Server applied on your system. Follow the link below to get the latest Service Pack for MS Exchange 2000 Server:

### Service Pack for MS Exchange 2000 Server:

<http://www.microsoft.com/technet/prodtechnol/exchange/downloads/2000/sp3/default.mspx>

For MS Exchange 2003 Server no additional service pack is needed; however, it is recommended to keep your system as up to date with the latest service packs and hotfixes as possible in order to obtain maximal available security.

### Service Pack for MS Exchange 2003 Server (optional):

<http://www.microsoft.com/exchange/evaluation/sp2/overview.mspx>

At the beginning of the setup, all system libraries versions will be examined. If it is necessary to install newer libraries, the installer will rename the old ones with a .delete extension. They will be deleted after the system restart.

### Service Pack for MS Exchange 2007 Server (optional):

<http://www.microsoft.com/downloads/details.aspx?FamilyID=44c66ad6-f185-4a1d->



[a9ab-473c1188954c&displaylang=en](#)

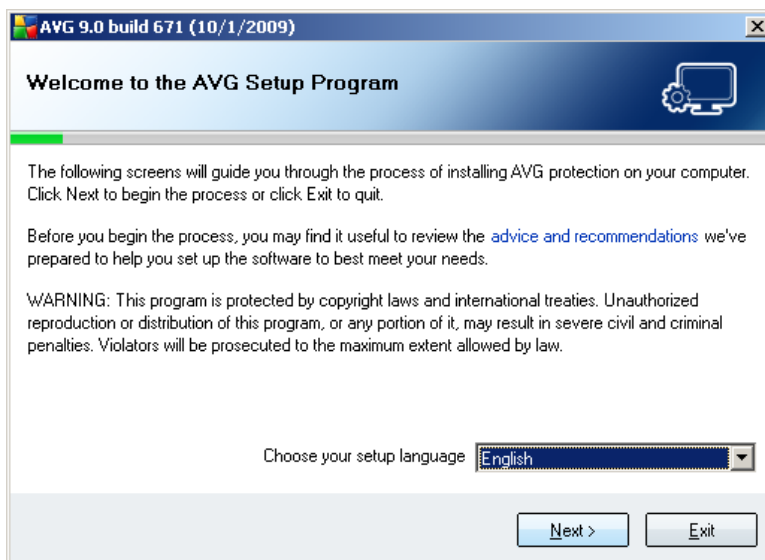
### 3. AVG Installation Process

To install AVG on your computer, you need to get the latest installation file. You can use the installation file from the CD that is a part of your box edition but this file might be out-of-date. Therefore we recommended getting the latest installation file online. You can download the file from the [AVG website](http://www.avg.com/download?prd=msw) (at <http://www.avg.com/download?prd=msw>).

During the installation process you will be asked for your license number. Please make sure you have it available before starting the installation. The sales number can be found on the CD packaging. If you purchased your copy of AVG on-line, your license number will have been delivered to you via e-mail.

Once you have downloaded and saved the installation file on your hard drive, you can launch the installation process. The installation is a sequence of dialog windows with a brief description of what do at each step. In the following, we offer an explanation for each dialog window:

#### 3.1. Installation Launch



The installation process starts with the **Welcome** window. In here you select the language used for the installation process. In the lower part of the dialog window find the **Choose your setup language** item, and select the desired language from the drop down menu. Then press the **Next** button to confirm and continue to the next dialog.

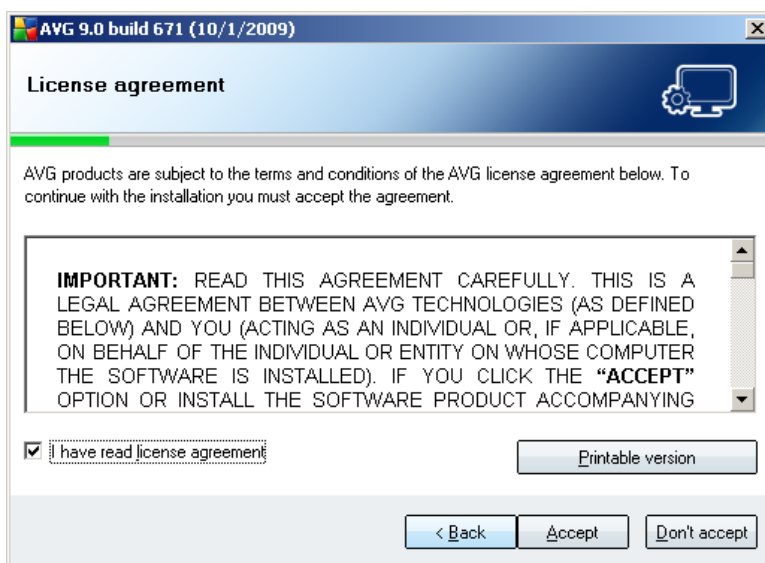
**Attention:** Here you are choosing the language for the installation process only. You are not selecting the language for the AVG application - this can be specified later on during the installation process!



### 3.2. License Agreement

The **License Agreement** dialog provides the full wording of the AVG license agreement. Please read it carefully and confirm that you have read, understood and accept the agreement by checking the **I have read license agreement** checkbox and pressing the **Accept** button. If you do not agree with the license agreement press the **Don't accept** button, and the installation process will be terminated immediately.

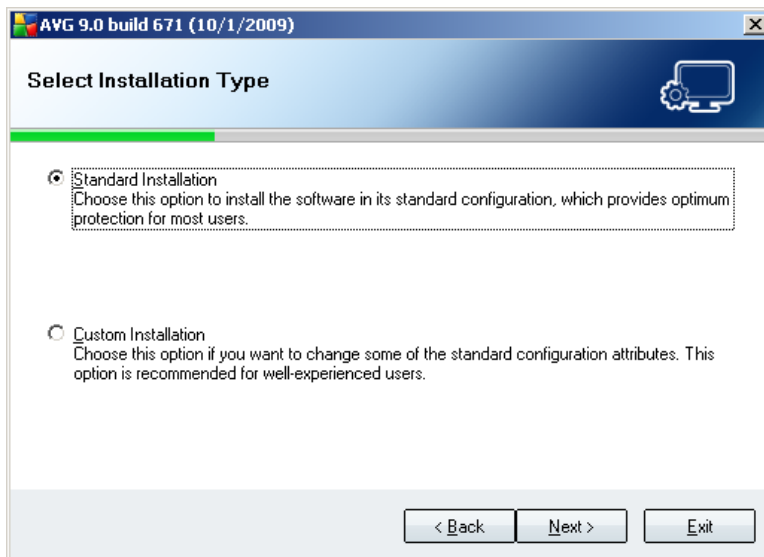
Use the **Printable version** button to open the license agreement in a new window suitable for printing.



### 3.3. Checking System Status

Having confirmed the license agreement you will be redirected to the **Checking System Status** dialog. This dialog does not require any intervention; your system is being checked before the AVG installation can start. Please wait until the process has finished, then continue automatically to the following dialog.

### 3.4. Select Installation Type



The **Select Installation Type** dialog offers the choice of two installation options: **Standard Installation** and **Custom Installation**.

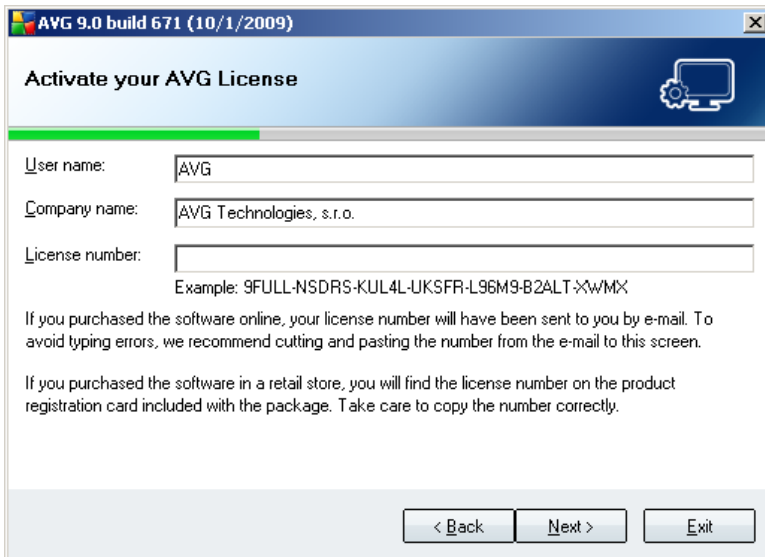
For most users, it is highly recommended to keep to the **Standard Installation** that installs AVG in fully automatic mode with settings predefined by the program vendor. This configuration provides maximum security combined with the optimal use of resources. In the future, if the need arises to change the configuration, you will always have the possibility to do so directly in the AVG application.

**Custom installation** should only be used by experienced users who have a valid reason to install AVG with non-standard settings. E.g. to fit specific system requirements.

### 3.5. Activate AVG

In the **Activate your AVG License** dialog you have to fill in your registration data. Type in your name (**User Name** field) and the name of your organization (**Company Name** field).

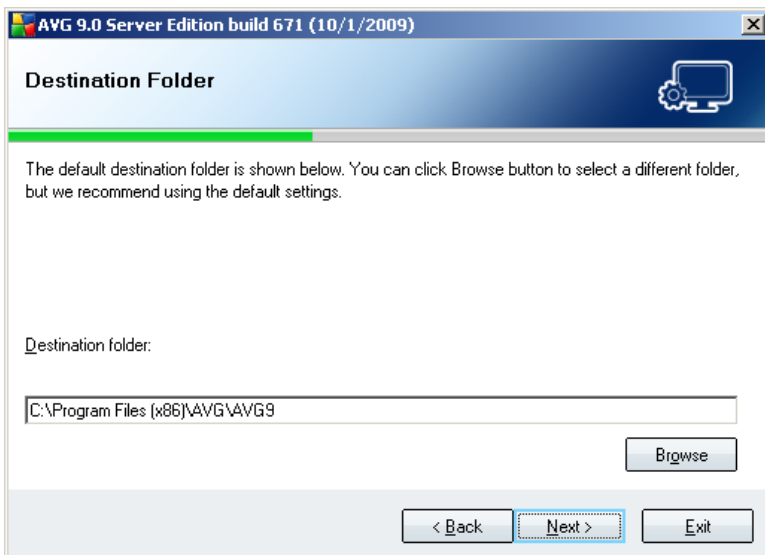
Then enter your license number into the **License Number** text field. The license number will be in the confirmation e-mail that you received after purchasing your AVG on-line. You must type in the number exactly as shown. If the digital form of the license number is available (in the email), it is recommended to use the copy and paste method to insert it.



Press the **Next** button to continue the installation process.

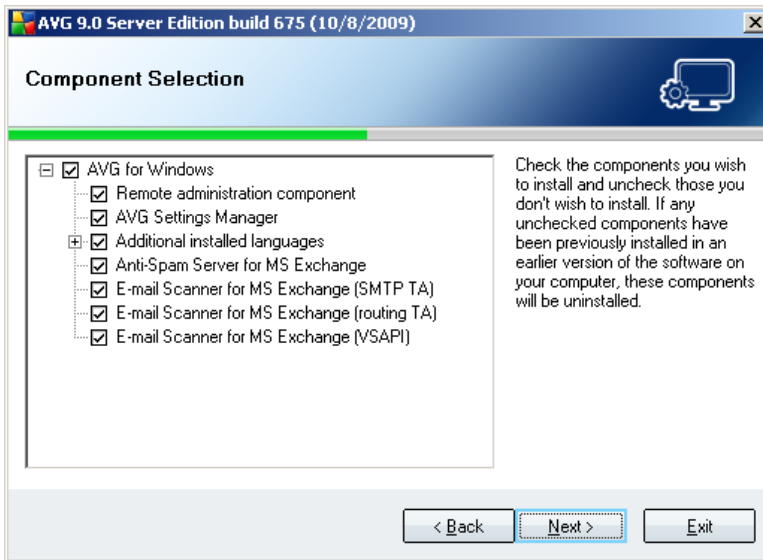
If in the previous step you have selected the standard installation, you will be redirected directly to the **Setup Summary** dialog. If custom installation was selected you will continue with the **Destination Folder** dialog.

### 3.6. Custom Installation - Destination Folder



The **Destination folder** dialog allows you to specify the location where AVG should be installed. By default, AVG will be installed to the program files folder located on drive C:. If you want to change this location, use the **Browse** button to display the drive structure, and select the respective folder. Press the **Next** button to confirm.

### 3.7. Custom Installation - Component Selection



The **Component Selection** dialog displays an overview of all AVG components that can be installed. If the default settings do not suit you, you can remove/add specific components.

**However, you can only select from components that are included in your purchased AVG edition. Only those components will be offered to be installed within the Component Selection dialog!**

- **Remote Administration component** - if you intend to connect AVG to an AVG DataCenter (AVG Network Editions), then you need to select this option.

**Note:** Only server components available in the list can be managed remotely!

- **AVG Settings Manager** - a tool suitable mainly for network administrators that allows you to copy, edit and distribute AVG configuration. The configuration can be saved to a portable device (USB flash drive etc.) and then applied manually or any other way to chosen stations.
- **Additional Installed Languages** - you can define which language(s) AVG should be installed in. Check the **Additional installed languages** item and then select the desired languages from the respective menu.

Basic overview of the individual server components:

- **Anti-Spam Server for MS Exchange**

Checks all incoming e-mail messages and marks unwanted e-mails as SPAM. It uses several analyzing methods to process each e-mail message, offering maximum possible protection against unwanted e-mail messages.

- **E-mail Scanner for MS Exchange (routing Transport Agent)**

Checks all incoming, outgoing and internal e-mail messages going through the MS Exchange HUB role.

Available for MS Exchange 2007 and can be installed for HUB role only.

- **E-mail Scanner for MS Exchange (SMTP Transport Agent)**

Checks all e-mail messages coming through the MS Exchange SMTP interface.

Available for MS Exchange 2007 only and can be installed for both EDGE and HUB roles.

- **E-mail Scanner for MS Exchange (VSAPI)**

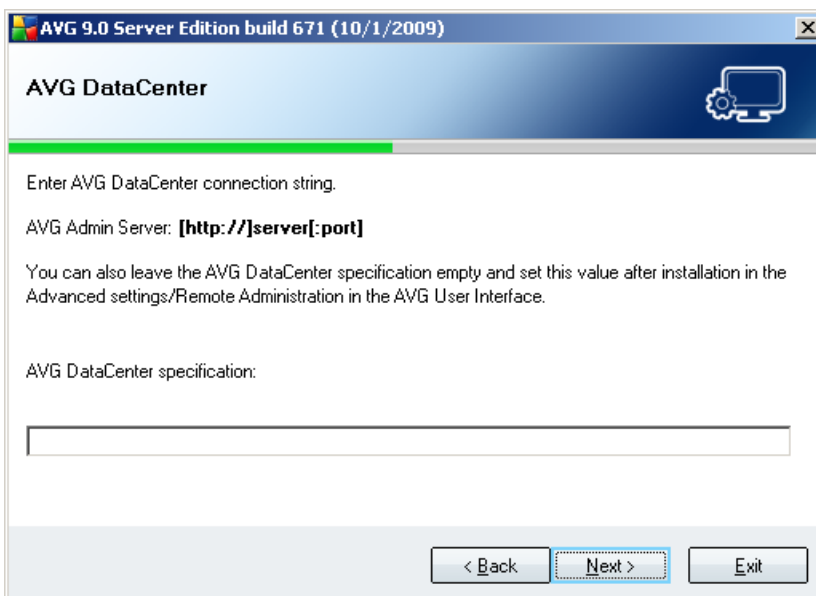
Checks all e-mail messages stored in user mailboxes. If any viruses are detected, they are moved to the Virus Vault, or completely removed.

**Note:** There are different options available for MS Exchange 2007 and MS Exchange 2003.

Continue by pressing the **Next** button.

### 3.8. Custom Installation - DataCenter

If you selected the **Remote Administration Component** module during module selection, then in this screen you can define the connection string for connecting to your AVG DataCenter.





### **3.9. Installing**

The ***Installing*** dialog shows the progress of the installation process, and does not require any intervention. Please wait until the installation is complete, then you will be redirected to the ***Installation Complete*** dialog.

### **3.10. Installation Complete**

The ***Installation Complete*** dialog is the last step of the AVG installation process. AVG is now installed on your computer and fully functional. The program is running in the background in fully automatic mode.

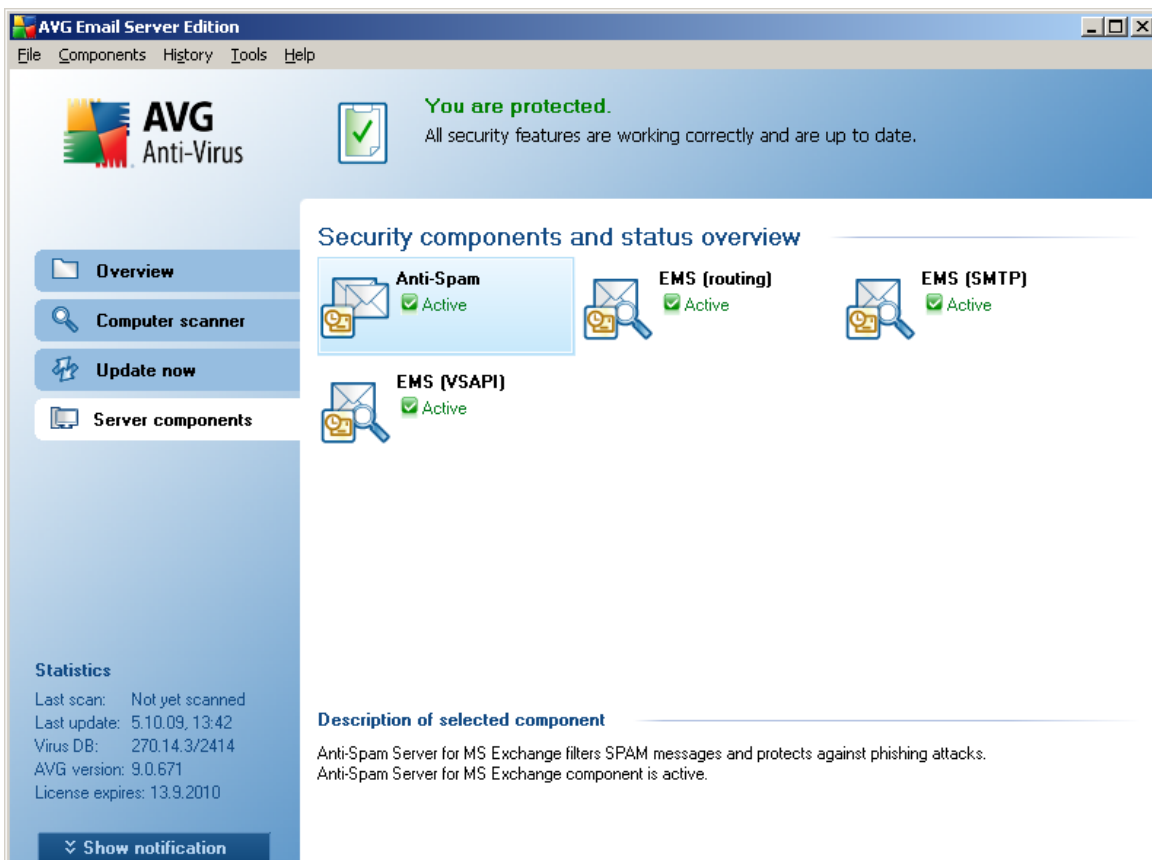
To individually setup protection for your e-mail server, follow the appropriate chapter:

- [\*\*\*E-mail Scanner for MS Exchange Server 2007\*\*\*](#)
- [\*\*\*E-mail Scanner for MS Exchange Server 2000/2003\*\*\*](#)
- [\*\*\*AVG for Kerio MailServer\*\*\*](#)

## 4. E-mail Scanner for MS Exchange Server 2007/2010

### 4.1. Overview

The AVG for MS Exchange Server 2007 configuration options are fully integrated within the AVG 9.0 Email Server Edition as server components.



Basic overview of the individual server components:

- **[Anti-Spam - Anti-Spam Server for MS Exchange](#)**  
Checks all incoming e-mail messages and marks unwanted e-mails as SPAM. It uses several analyzing methods to process each e-mail message, offering maximum possible protection against unwanted e-mail messages.
- **[EMS \(routing\) - E-mail Scanner for MS Exchange \(routing Transport Agent\)](#)**  
Checks all incoming, outgoing and internal e-mail messages going through the MS Exchange HUB role.

Available for MS Exchange 2007 and can be installed for HUB role only.

- **[EMS \(SMTP\) - E-mail Scanner for MS Exchange \(SMTP Transport Agent\)](#)**

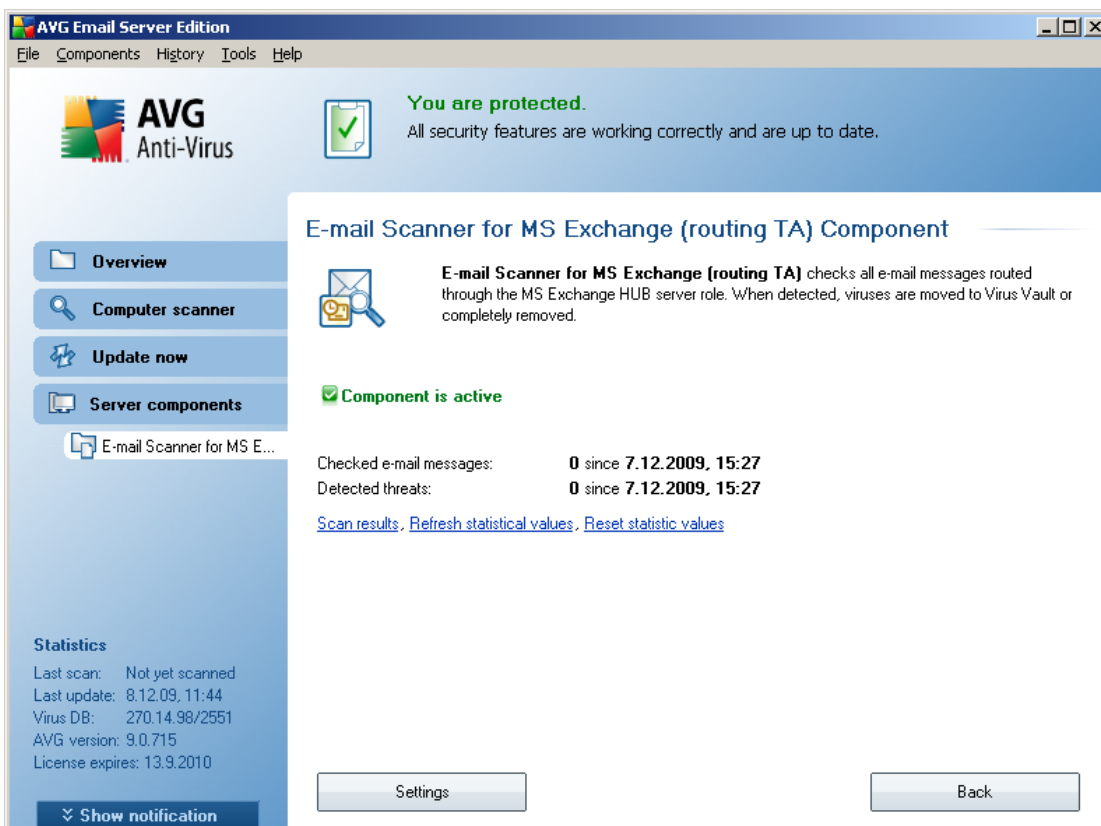
Checks all e-mail messages coming through the MS Exchange SMTP interface.

Available for MS Exchange 2007 only and can be installed for both EDGE and HUB roles.

- **[EMS \(VSAPI\) - E-mail Scanner for MS Exchange \(VSAPI\)](#)**

Checks all e-mail messages stored in user mailboxes. If any viruses are detected, they are moved to the Virus Vault, or completely removed.

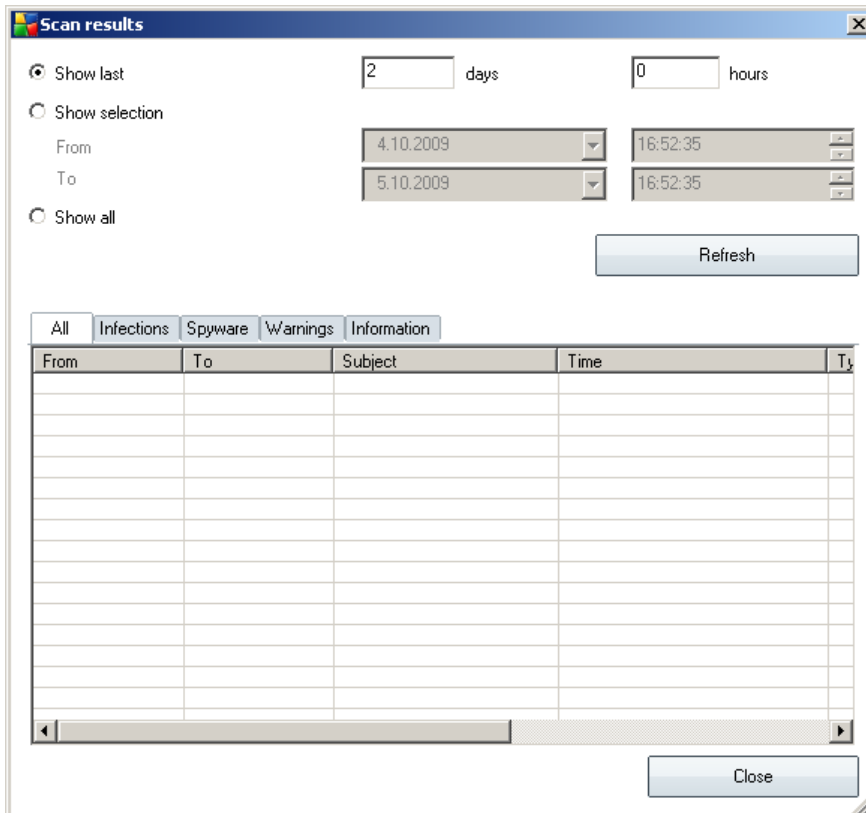
Double-click a required component to open its interface. With the exception of Anti-Spam, all the components share the following common control buttons and links:



- ***Scan Results***

Opens a new dialog where you can review scan results:





Here you can check messages divided into several tabs according to their severity. See configuration of individual components for amending the severity and reporting.

By default there are displayed only results for the last two days. You can change the displayed period by amending the following options:

- **Show last** - insert preferred days and hours.
- **Show selection** - choose a custom time and date interval.
- **Show all** - Displays results for the whole time period.

Use **Refresh** button to reload the results.

- **Refresh statistical values** - updates stats displayed above.
- **Reset statistical values** - resets all the stats to zero.

The working buttons are as follows:

- **Settings** - use this button to open settings of the component.

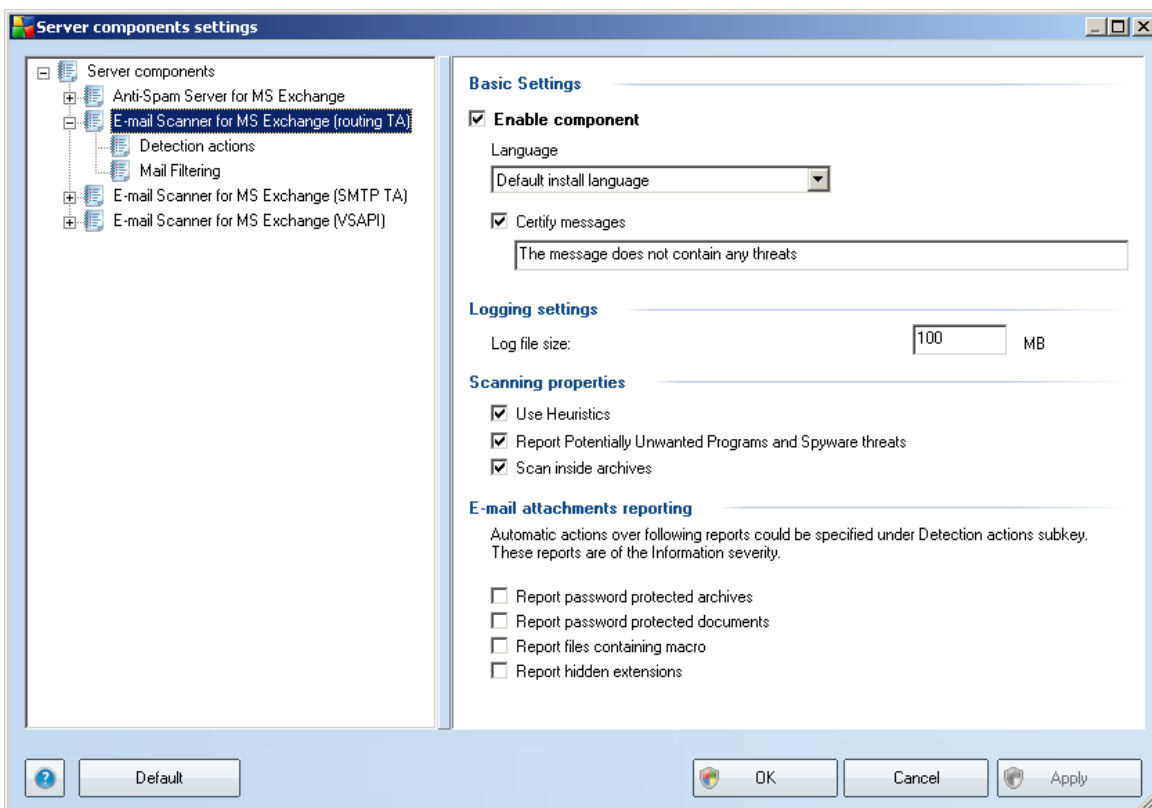
- **Back** - press this button to return to the Server components overview.

You will find more information on individual settings of all components in the chapters below.

## 4.2. E-mail Scanner for MS Exchange (routing TA)

To open the settings of **E-mail Scanner for MS Exchange (routing transport agent)**, select the **Settings** button from the interface of the component.

From the **Server components** list select the **E-mail Scanner for MS Exchange (routing TA)** item:



The **Basic Settings** section contains the following options:

- **Enable component** - uncheck to disable the whole component.
- **Language** - select preferred component language.
- **Certify messages** - check this if you wish to add a certification note to all scanned messages. You can customize the message in the next field.

The **Logging settings** section:



- **Log file size** - choose a preferred size of the log file. Default value: 100 MB.

The **Scanning properties** section:

- **Use Heuristics** - check this box to enable heuristic analysis method during scanning.
- **Report Potentially Unwanted Programs and Spyware threats** - check this option to report the presence of potentially unwanted programs and spyware.
- **Scan inside archives** - check this option to let the scanner look also inside archived files (zip, rar, etc.)

The **E-mail attachments reporting** section allows you to choose which items should be reported during scanning. If checked, each e-mail with such an item will contain [INFORMATION] tag in the message subject. This is the default configuration which can be easily amended in the **Detection actions section**, part **Information** (see below).

The following options are available:

- **Report password protected archives**
- **Report password protected documents**
- **Report files containing macro**
- **Report hidden extensions**

There are also these sub-items available in the following tree structure:

- [Detection actions](#)
- [Mail filtering](#)

### **4.3. E-mail Scanner for MS Exchange (SMTP TA)**

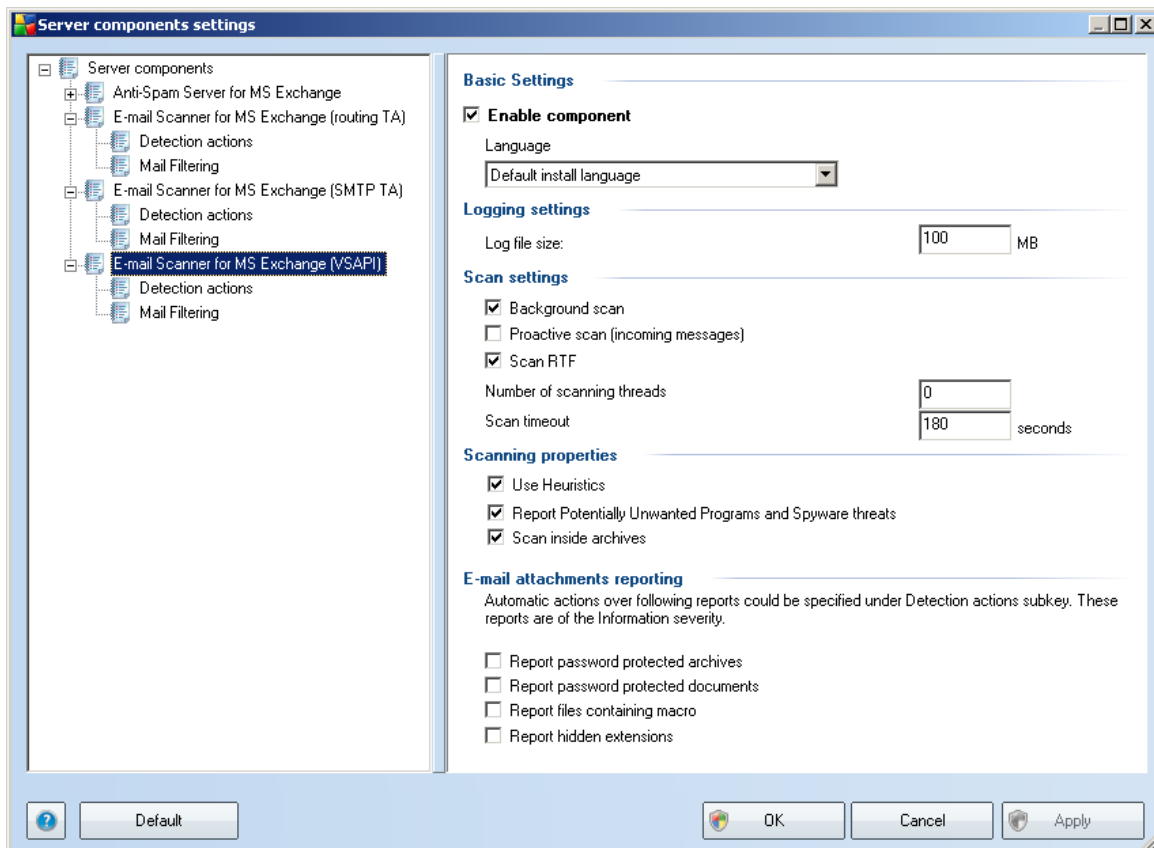
The configuration for the **E-mail Scanner for MS Exchange (SMTP Transport Agent)** is exactly the same as in the case of routing transport agent. For more information please see the [E-mail Scanner for MS Exchange \(routing TA\)](#) chapter above.

There are also these sub-items available in the following tree structure:

- [Detection actions](#)
- [Mail filtering](#)

#### 4.4. E-mail Scanner for MS Exchange (VSAPI)

This item contains settings of the **E-mail Scanner for MS Exchange (VSAPI)**.



The **Basic Settings** section contains the following options:

- **Enable component** - uncheck to disable the whole component.
- **Language** - select preferred component language.

The **Logging settings** section:

- **Log file size** - choose a preferred size of the log file. Default value: 100 MB.

The **Scan settings** section:

- **Background Scan** – you can enable or disable the background scanning process here. Background scanning is one of the features of the VSAPI 2.0/2.5 application interface. It provides threaded scanning of the Exchange Messaging Databases. Whenever an item that has not been scanned with the latest AVG virus base update is encountered in the users' mailbox folders, it is submitted to AVG for Exchange 2007 Server to be scanned. Scanning and searching for the

not examined objects runs in parallel.

A specific low priority thread is used for each database, which guarantees other tasks (e.g. e-mail messages storage in the Microsoft Exchange database) are always carried out preferentially.

- **Proactive Scan (incoming messages)**

You can enable or disable the proactive scanning function of VSAPI 2.0/2.5 here. This scanning occurs when an item is delivered to a folder, but a request has not been made by a client.

As soon as messages are submitted to the Exchange store, they enter the global scanning queue as low priority (maximum of 30 items). They are scanned on the first in, first out (FIFO) basis. If an item is accessed while still in the queue, it is changed to high priority.

**Note:** *Overflow messages will continue to the store unscanned.*

**Note:** *Even if you disable both **Background Scan** and **Proactive Scan** options, the on access scanner will be still active when an user will try to download a message with the MS Outlook client.*

- **Scan RTF** - you can specify here, whether the RTF file type should be scanned or not.
- **Number of Scanning Threads** - the scanning process is threaded by default to increase the overall scanning performance by a certain level of parallelism. You can change the threads count here.

The default number of threads is computed as 2 times the 'number\_of\_processors' + 1.

The minimum number of threads is computed as ('number of processors'+1) divided by 2.

The maximum number of threads is computed as 'Number of Processors' multiplied by 5 + 1.

If the value is the minimum or lesser value or the maximum or greater, the default value is used.

- **Scan Timeout** - the maximum continuous interval (in seconds) for one thread to access the message that is being scanned (the default value is 180 seconds).

The **Scanning properties** section:

- **Use Heuristics** - check this box to enable heuristic analysis method during scanning.
- **Report Potentially Unwanted Programs and Spyware threats** - check this option to report the presence of potentially unwanted programs and spyware.



- **Scan inside archives** - check this option to let the scanner look also inside archived files (zip, rar, etc.)

The **E-mail attachments reporting** section allows you to choose which items should be reported during scanning. The default configuration can be easily amended in the **Detection actions section**, part **Information** (see below).

The following options are available:

- **Report password protected archives**
- **Report password protected documents**
- **Report files containing macro**
- **Report hidden extensions**

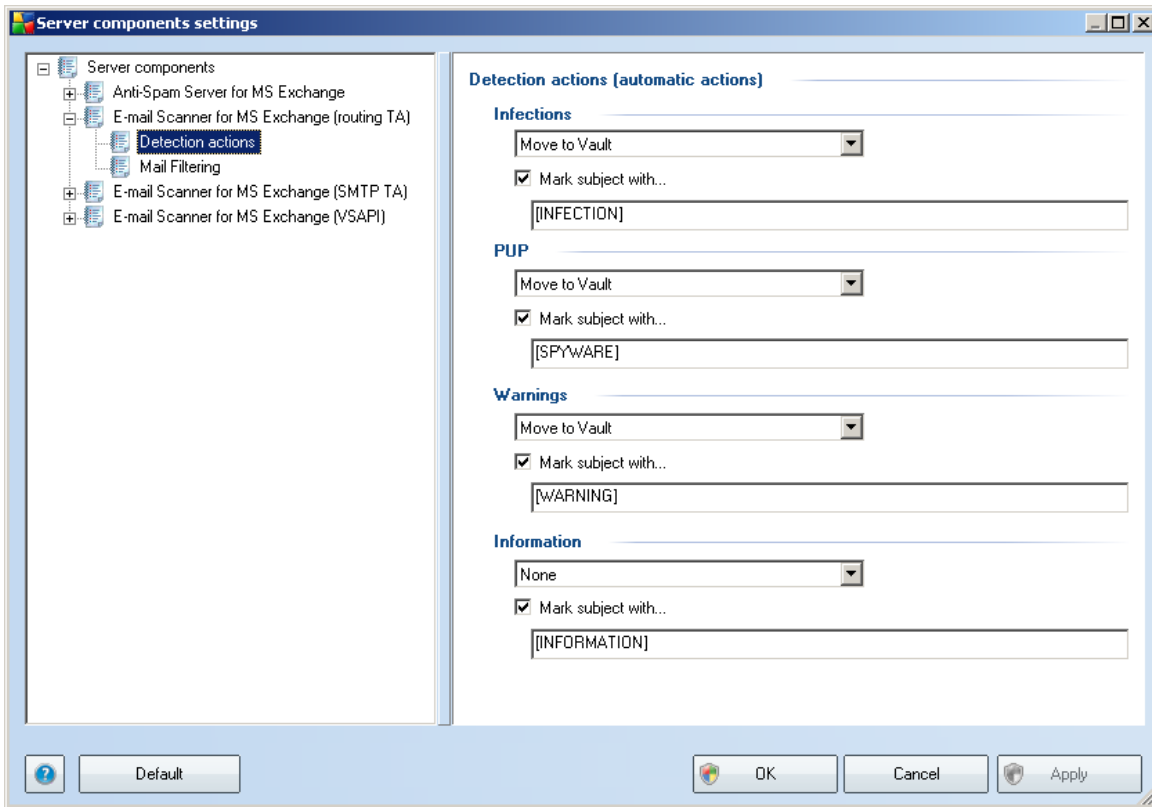
Generally, some of these features are user extensions of the Microsoft VSAPI 2.0/2.5 application interface services. For the detailed information on the VSAPI 2.0/2.5 please refer to the following links (and also the links accessible from the referenced ones):

- <http://support.microsoft.com/default.aspx?scid=kb;en-us;328841&Product=exch2k> - for information on Exchange and antivirus software interaction
- <http://support.microsoft.com/default.aspx?scid=kb;en-us;823166> for information on additional VSAPI 2.5 features in Exchange 2003 Server application.

There are also these sub-items available in the following tree structure:

- **[Detection actions](#)**
- **[Mail filtering](#)**

## 4.5. Detection Actions



In the **Detection actions** sub-item you can choose automatic actions that should take place during the scanning process.

The actions are available for the following items:

- **Infections**
- **PUP (Potentially Unwanted Programs)**
- **Warnings**
- **Information**

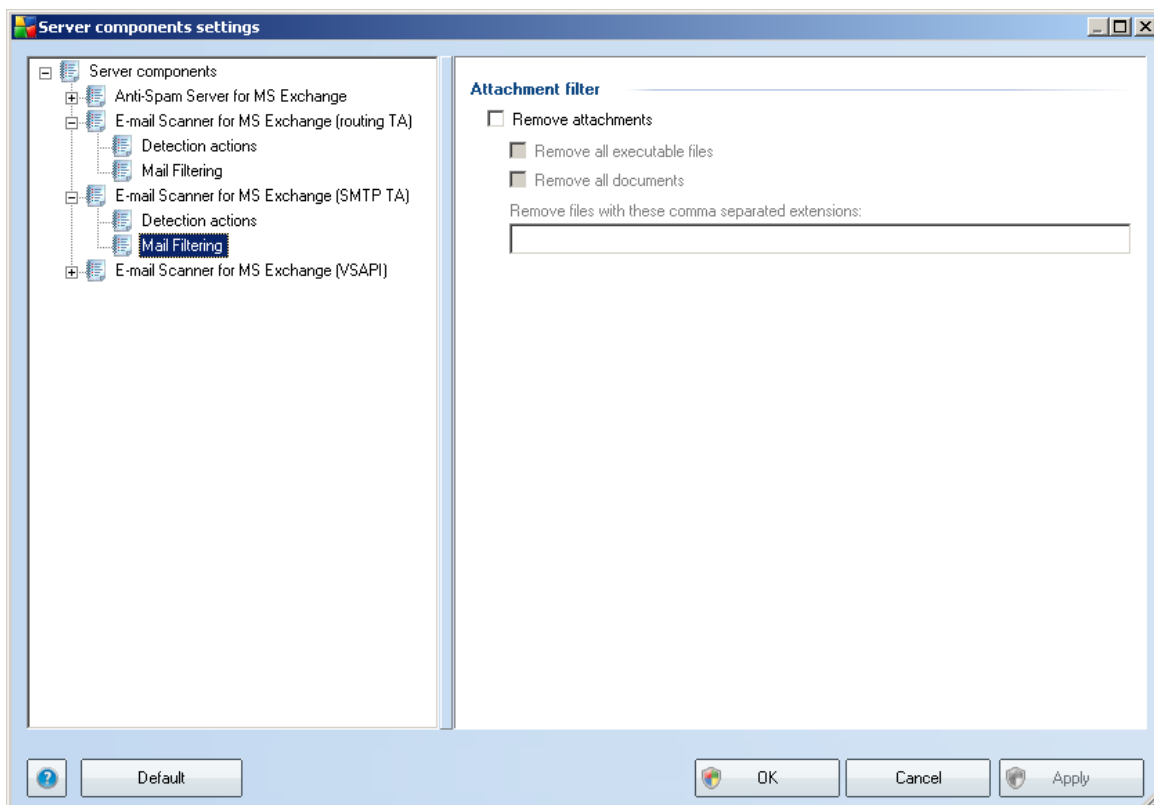
Use the roll-down menu to choose an action for each item:

- **None** - no action will be taken.
- **Move to Vault** - the given threat will be moved to Virus Vault.
- **Remove** - the given threat will be removed.

To select a custom subject text for messages that contain the given item/threat, check the **Mark subject with...** box and fill-in a preferred value.

**Note:** The last mentioned feature is not available for E-mail Scanner for MS Exchange VSAPI.

## 4.6. Mail Filtering



In the **Mail Filtering** sub-item you can choose which attachments should be automatically removed, if any. The following options are available:

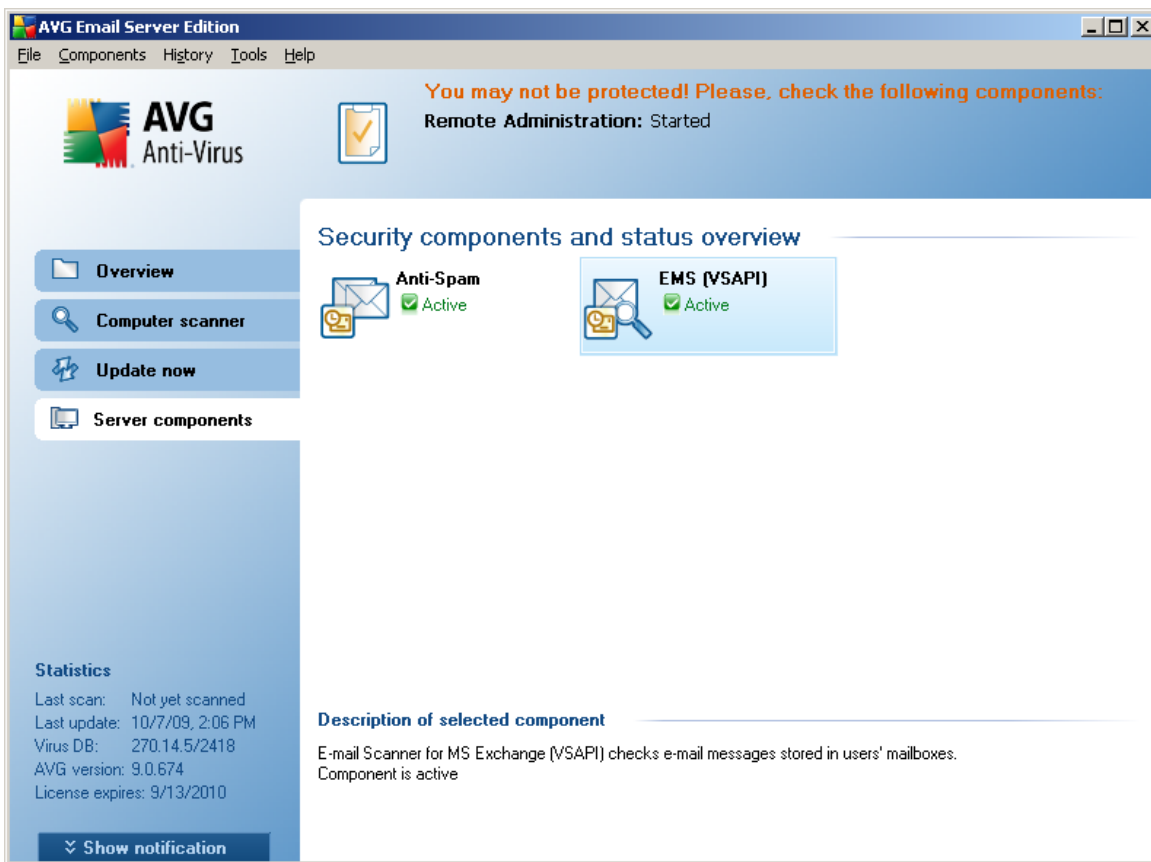
- **Remove attachments** - check this box to enable the feature.
- **Remove all executable files** - removes all executables.
- **Remove all documents** - removes all document files.
- **Remove files with these comma separated extensions** - fill the box with file extensions you wish to automatically remove. Separate the extensions with comma.



## 5. E-mail Scanner for MS Exchange Server 2000/2003

### 5.1. Overview

The E-mail Scanner for MS Exchange Server 2000/2003 configuration options are fully integrated within the AVG 9.0 Email Server Edition as a server component.



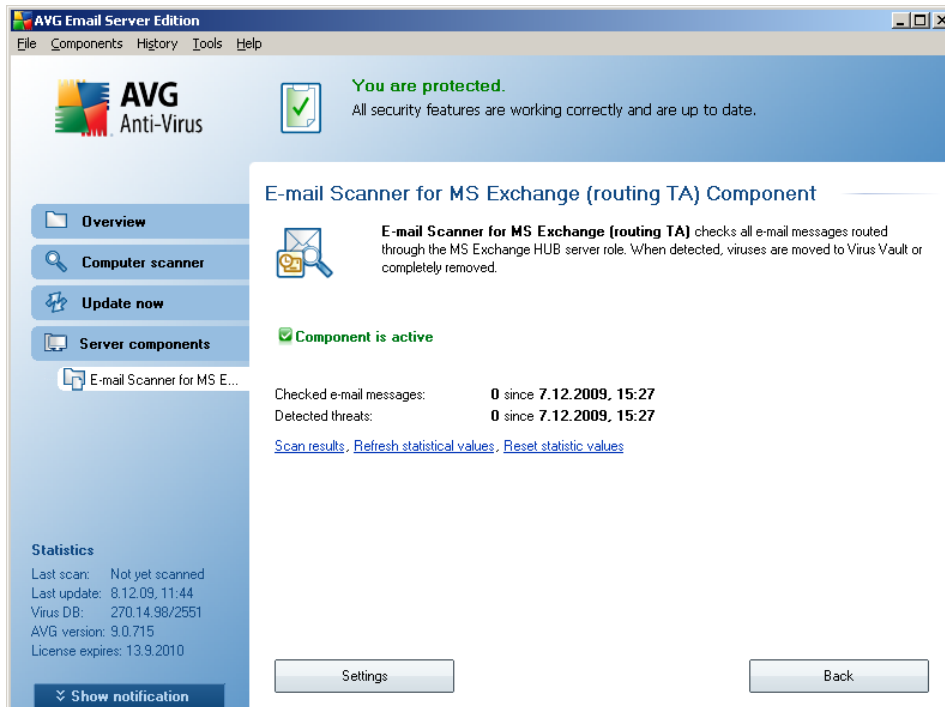
The server components include the following:

Basic overview of the individual server components:

- **[Anti-Spam - Anti-Spam Server for MS Exchange](#)**  
Checks all incoming e-mail messages and marks unwanted e-mails as SPAM. It uses several analyzing methods to process each e-mail message, offering maximum possible protection against unwanted e-mail messages.
- **[EMS \(VSAPI\) - E-mail Scanner for MS Exchange \(VSAPI\)](#)**

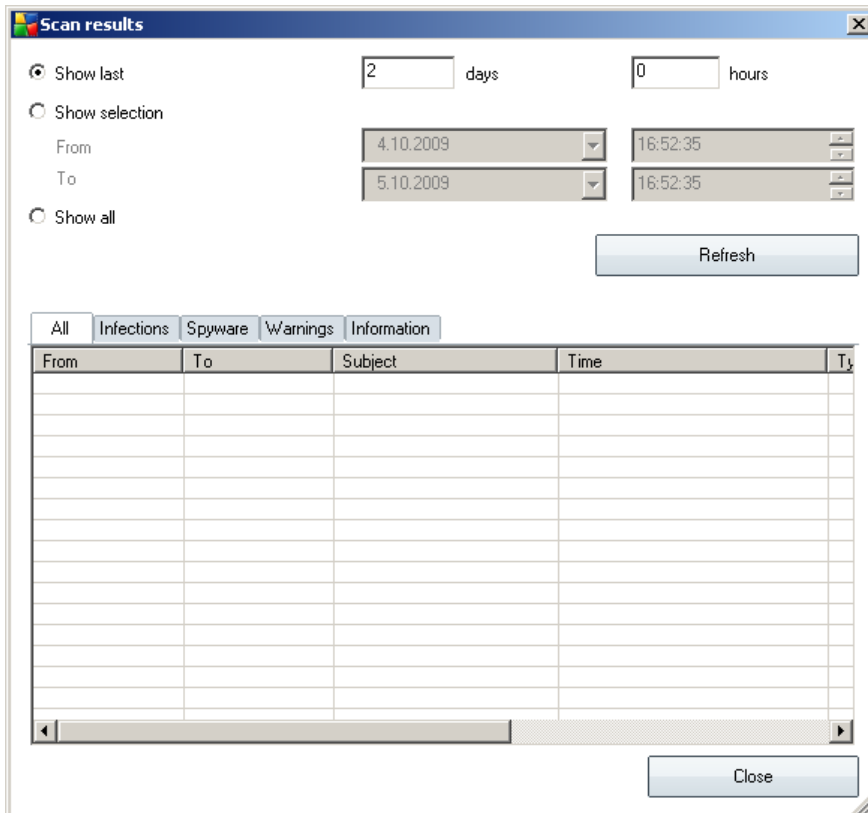
Checks all e-mail messages stored in user mailboxes. If any viruses are detected, they are moved to the Virus Vault, or completely removed.

Double-click a required component to open its interface. With the exception of Anti-Spam, all the components share the following common control buttons and links:



- **Scan Results**

Opens a new dialog where you can review scan results:



Here you can check messages divided into several tabs according to their severity. See configuration of individual components for amending the severity and reporting.

By default there are displayed only results for the last two days. You can change the displayed period by amending the following options:

- **Show last** - insert preferred days and hours.
- **Show selection** - choose a custom time and date interval.
- **Show all** - Displays results for the whole time period.

Use **Refresh** button to reload the results.

- **Refresh statistical values** - updates stats displayed above.
- **Reset statistical values** - resets all the stats to zero.

The working buttons are as follows:

- **Settings** - use this button to open settings of the component.

- **Back** - press this button to return to the Server components overview.

You will find more information on individual settings of all components in the chapters below.

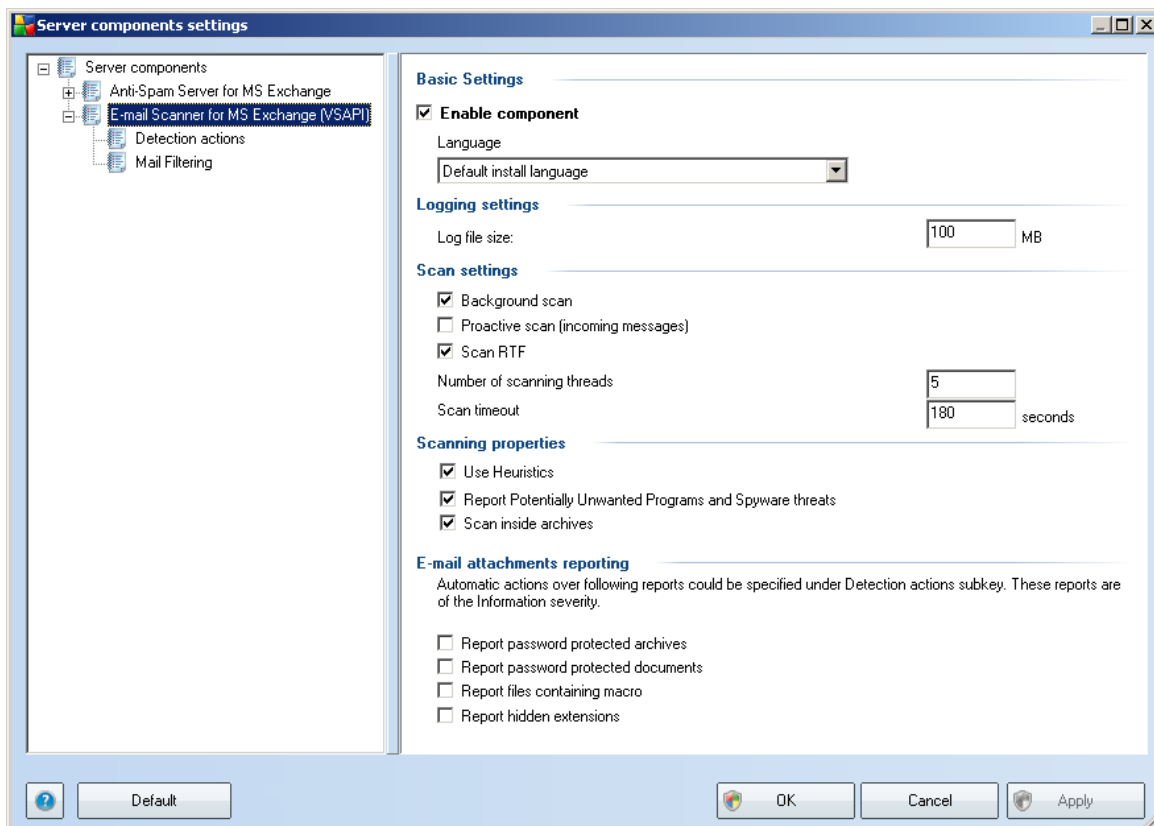
## 5.2. VSAPI 2.0

Virus Scanning **API 2.0** (VSAPI 2.0 as provided in MS Exchange 2000 Server) does not allow the deletion of infected e-mail files. Since the virus infected e-mail message attachment cannot be deleted, its filename is changed: AVG for Exchange 2000/2003 Server appends the .virusinfo.txt extension to the original filename. The file content is overwritten with a message about the known virus. If a virus is found directly in the message, the whole body of the message is overwritten with a note saying a virus was found inside this message.

Virus Scanning **API 2.5** (VSAPI 2.5 as provided in MS Exchange 2003 Server) also allows deletion of infected messages. This feature can be set up in AVG for MS Exchange 2000/2003 Server configuration dialog.

## 5.3. E-mail Scanner for MS Exchange (VSAPI)

This item contains settings of the **E-mail Scanner for MS Exchange (VSAPI)**.





The **Basic Settings** section contains the following options:

- **Enable component** - uncheck to disable the whole component.
- **Language** - select preferred component language.

The **Logging settings** section:

- **Log file size** - choose a preferred size of the log file. Default value: 100 MB.

The **Scan settings** section:

- **Background Scan** – you can enable or disable the background scanning process here. Background scanning is one of the features of the VSAPI 2.0/2.5 application interface. It provides threaded scanning of the Exchange Messaging Databases. Whenever an item that has not been scanned with the latest AVG virus base update is encountered in the users' mailbox folders, it is submitted to AVG for Exchange 2007 Server to be scanned. Scanning and searching for the not examined objects runs in parallel.

A specific low priority thread is used for each database, which guarantees other tasks (e.g. e-mail messages storage in the Microsoft Exchange database) are always carried out preferentially.

- **Proactive Scan (incoming messages)**

You can enable or disable the proactive scanning function of VSAPI 2.0/2.5 here. This scanning occurs when an item is delivered to a folder, but a request has not been made by a client.

As soon as messages are submitted to the Exchange store, they enter the global scanning queue as low priority (maximum of 30 items). They are scanned on the first in, first out (FIFO) basis. If an item is accessed while still in the queue, it is changed to high priority.

**Note:** *Overflow messages will continue to the store unscanned.*

**Note:** *Even if you disable both **Background Scan** and **Proactive Scan** options, the on access scanner will be still active when an user will try to download a message with the MS Outlook client.*

- **Scan RTF** - you can specify here, whether the RTF file type should be scanned or not.
- **Number of Scanning Threads** - the scanning process is threaded by default to increase the overall scanning performance by a certain level of parallelism. You can change the threads count here.

The default number of threads is computed as 2 times the 'number\_of\_processors' + 1.



The minimum number of threads is computed as ('number of processors'+1) divided by 2.

The maximum number of threads is computed as 'Number of Processors' multiplied by 5 + 1.

If the value is the minimum or lesser value or the maximum or greater, the default value is used.

- **Scan Timeout** - the maximum continuous interval (in seconds) for one thread to access the message that is being scanned (the default value is 180 seconds).

The **Scanning properties** section:

- **Use Heuristics** - check this box to enable heuristic analysis method during scanning.
- **Report Potentially Unwanted Programs and Spyware threats** - check this option to report the presence of potentially unwanted programs and spyware.
- **Scan inside archives** - check this option to let the scanner look also inside archived files (zip, rar, etc.)

The **E-mail attachments reporting** section allows you to choose which items should be reported during scanning. The default configuration can be easily amended in the **Detection actions section**, part **Information** (see below).

The following options are available:

- **Report password protected archives**
- **Report password protected documents**
- **Report files containing macro**
- **Report hidden extensions**

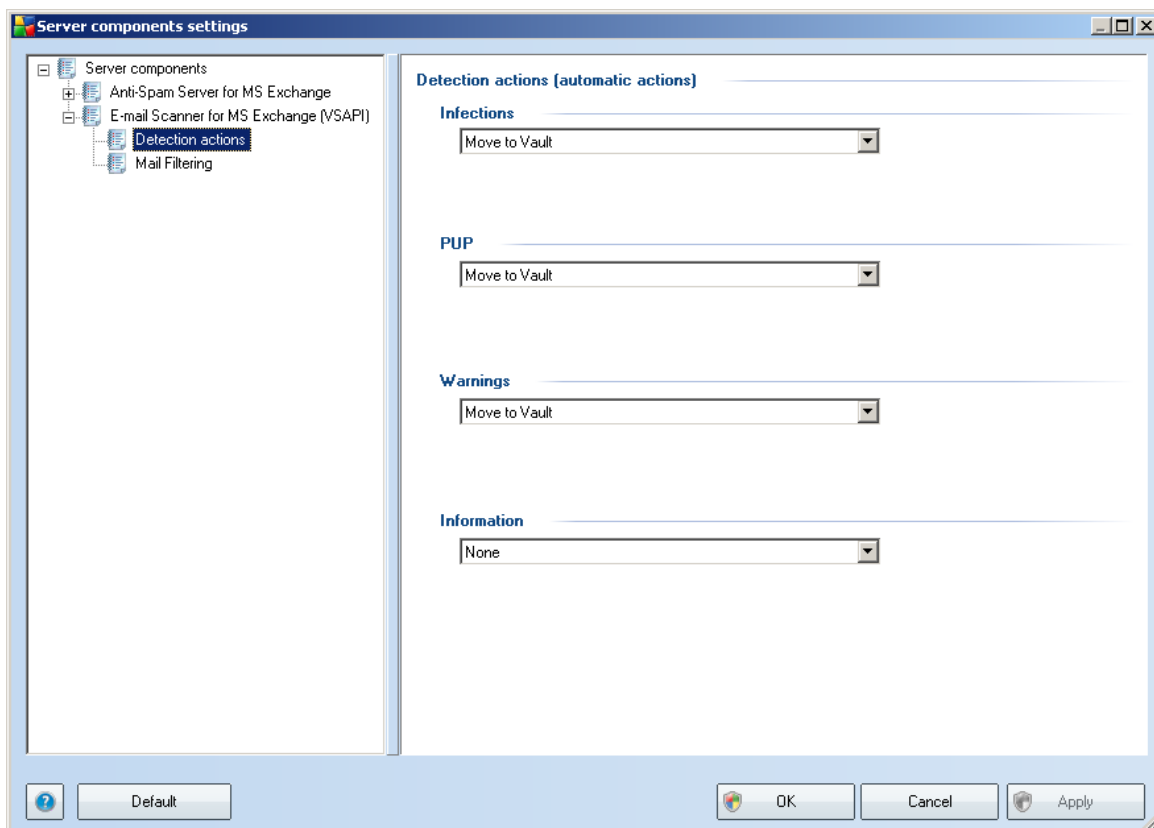
Generally, all these features are user extensions of the Microsoft VSAPI 2.0/2.5 application interface services. For the detailed information on the VSAPI 2.0/2.5 please refer to the following links (and also the links accessible from the referenced ones):

- <http://support.microsoft.com:80/support/kb/articles/Q285/6/67.ASP> for general info on the VSAPI 2.0 in Exchange 2000 Server Service Pack 1
- <http://support.microsoft.com/default.aspx?scid=kb;en-us;328841&Product=exch2k> - for information on Exchange and antivirus software interaction
- <http://support.microsoft.com/default.aspx?scid=kb;en-us;823166> for information on additional VSAPI 2.5 features in Exchange 2003 Server application.

There are also these sub-items available in the following tree structure:

- [Detection actions](#)
- [Mail filtering](#)

## 5.4. Detection Actions



In the **Detection actions** sub-item you can choose automatic actions that should take place during the scanning process.

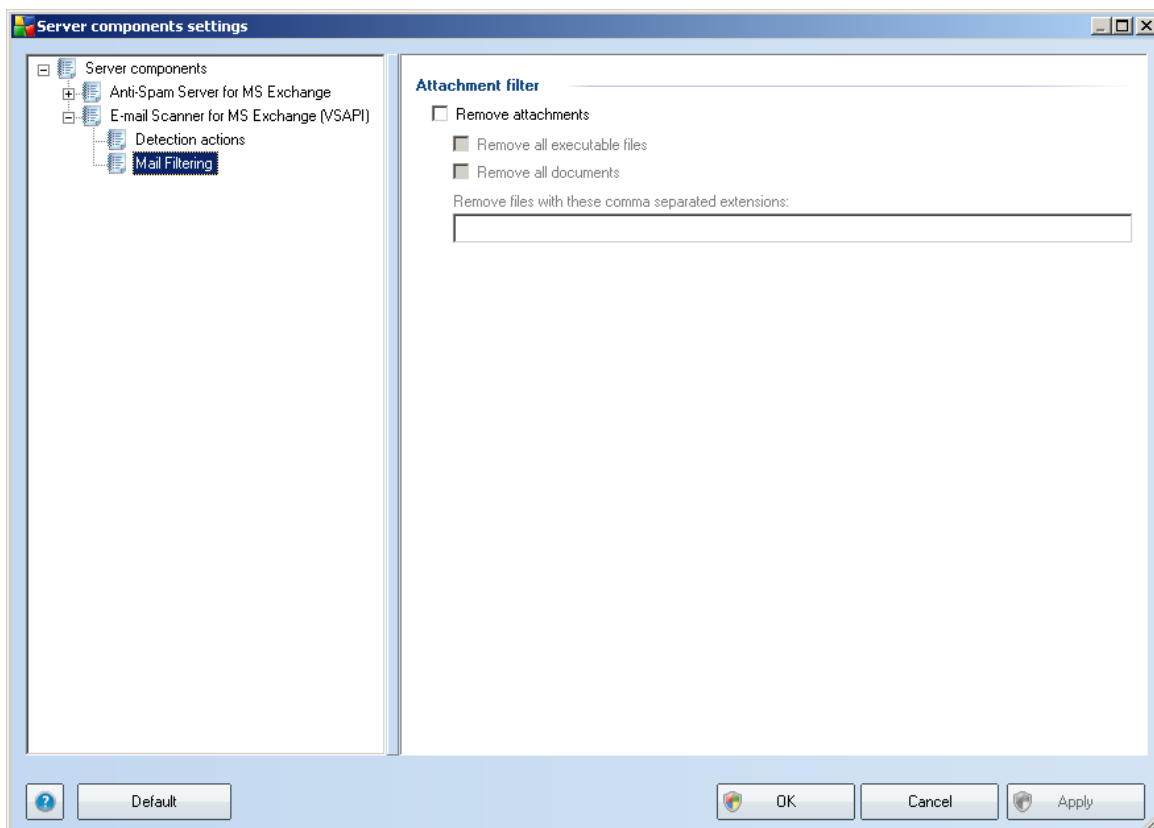
The actions are available for the following items:

- **Infections**
- **PUP (Potentially Unwanted Programs)**
- **Warnings**
- **Information**

Use the roll-down menu to choose an action for each item:

- **None** - no action will be taken.
- **Move to Vault** - the given threat will be moved to Virus Vault.
- **Remove** - the given threat will be removed.

## 5.5. Mail Filtering



In the **Mail Filtering** sub-item you can choose which attachments should be automatically removed, if any. The following options are available:

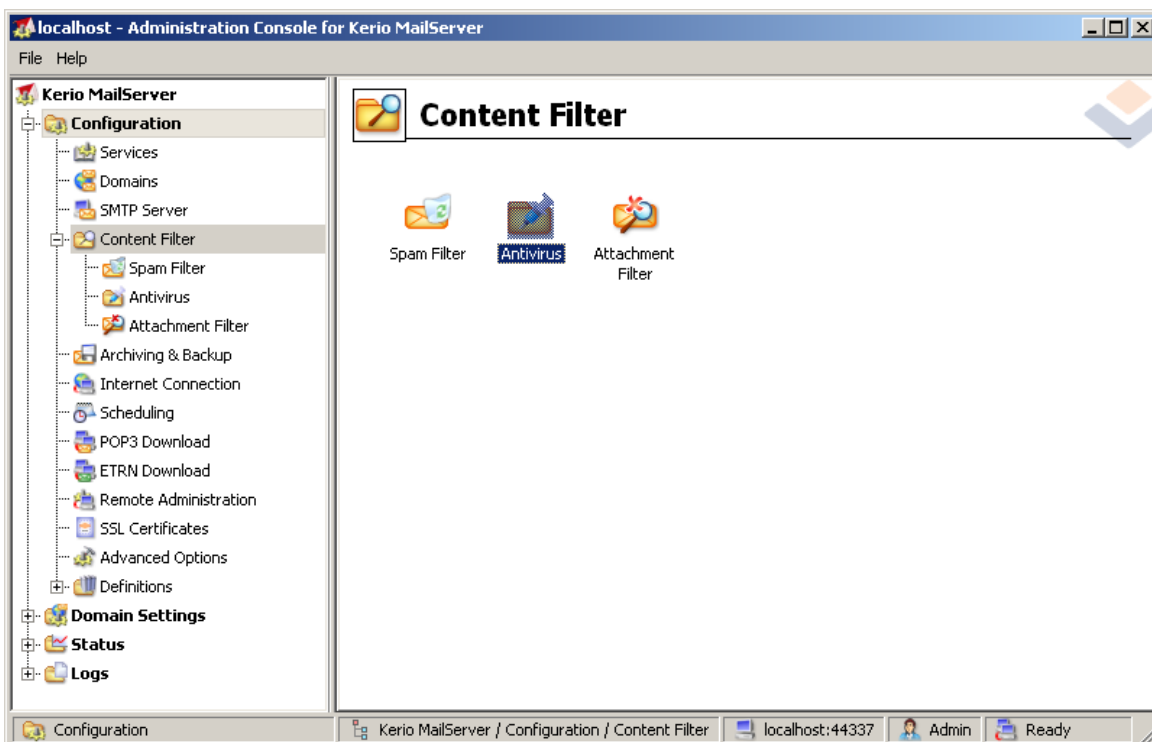
- **Remove attachments** - check this box to enable the feature.
- **Remove all executable files** - removes all executables.
- **Remove all documents** - removes all document files.
- **Remove files with these comma separated extensions** - fill the box with file extensions you wish to automatically remove. Separate the extensions with comma.



## 6. AVG for Kerio MailServer

### 6.1. Configuration

The anti-virus protection mechanism is integrated directly into the Kerio MailServer application. In order to activate e-mail protection of Kerio MailServer by the AVG scanning engine, launch the Kerio Administration Console application. In the control tree on the left side of the application window choose the Content Filter sub-branch in the Configuration branch:

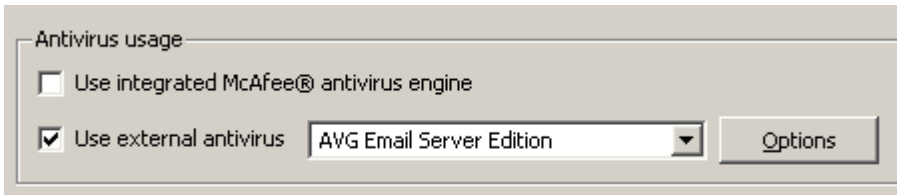


Clicking the Content Filter item will display a dialog with three items:

- **Spam Filter**
- **Antivirus** (see section **Antivirus**)
- **Attachment Filter** (see section **Attachment Filter**)

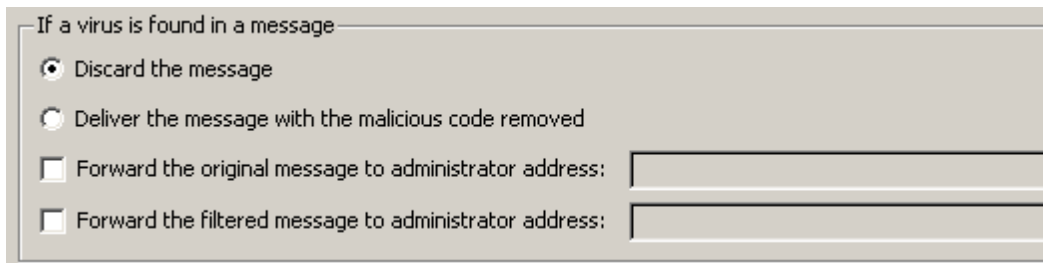
#### 6.1.1. Antivirus

To activate AVG for Kerio MailServer, select the Use external antivirus checkbox and choose the AVG Email Server Edition item from the external software menu in the Antivirus usage frame of the configuration window:



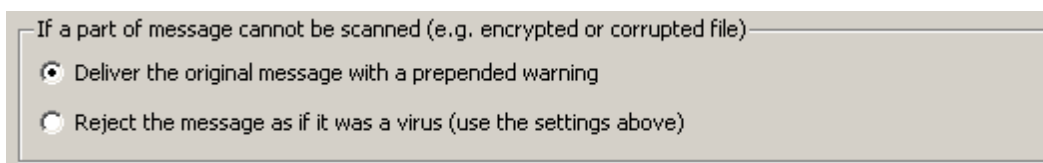
In the following section you can specify what to do with an infected or filtered message:

- ***If a virus is found in a message***



This frame specifies the action to be carried out when a virus is detected in a message, or when a message is filtered by an attachment filter:

- ***Discard the message*** – when selected, the infected or filtered message will be deleted.
  - ***Deliver the message with the malicious code removed*** – when selected, the message will be delivered to the recipient, but without the possibly harmful attachment.
  - ***Forward the original message to administrator address*** – when selected, the virus infected message is forwarded to the address specified in the address text field
  - ***Forward the filtered message to administrator address*** - when selected, the filtered message is forwarded to the address specified in the address text field
- ***If a part of message cannot be scanned (e.g. encrypted or corrupted file)***

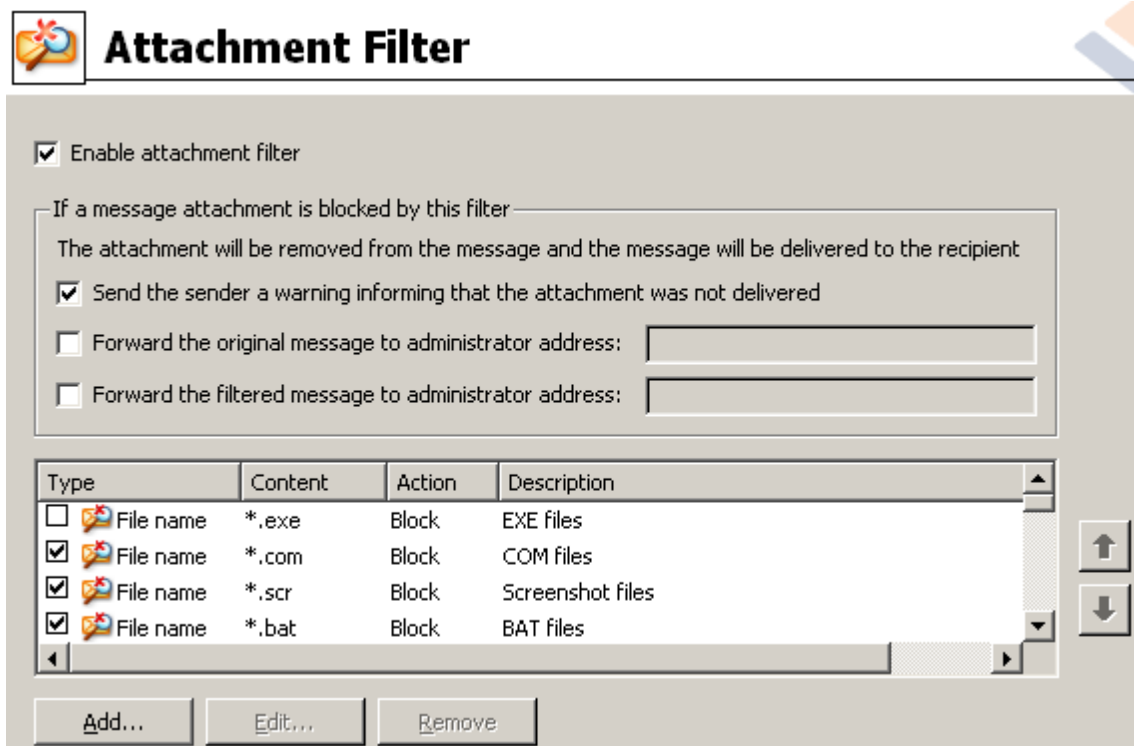


This frame specifies the action to be taken when part of the message or attachment cannot be scanned:

- **Deliver the original message with a prepared warning** — the message (or attachment) will be delivered unchecked. The user will be warned that the message may still contain viruses.
- **Reject the message as if it was virus** — the system will react the same way as when a virus was detected (i.e. the message will be delivered without any attachment or rejected). This option is safe, but sending password protected archives will be virtually impossible.

### 6.1.2. Attachment Filter

In the Attachment Filter menu there is a list of various attachment definitions:



You can enable/disable filtering of mail attachments by selecting the Enable attachment filter checkbox. Optionally you can change the following settings:

- **Send a warning to sender that the attachment was not delivered**  
The sender will receive a warning from Kerio MailServer, that he/she has sent a message with a virus or blocked attachment.
- **Forward the original message to administrator address**  
The message will be forwarded (as it is — with the infected or forbidden attachment) to a defined email address, regardless of whether it is a local or an

external address.

- **Forward the filtered message to administrator address**

The message without its infected or prohibited attachment will be (apart from the actions selected below) forwarded to the specified e-mail address. This can be used to verify the correct functioning of the antivirus and/or attachment filter.

In the list of extensions, each item has four fields:

- **Type** – specification of the kind of attachment determined by the extension given in the Content field. Possible types are File name or MIME type. You can select the respective box in this field to include/exclude the item from attachment filtering.
- **Content** – an extension to be filtered can be specified here. You can use operation system wildcards here (for example the string `\*.doc.\*' stands for any file with the .doc extension, and any other extension following).
- **Action** – define action to be performed with the particular attachment. Possible actions are Accept (accept the attachment), and Block (block the attachment as defined in the Action tab dialog).
- **Description** – description of the attachment is defined in this field.

An item is removed from the list by pressing the Remove button. You can add another item to the list by pressing the **Add...** button. Or, you can edit an existing record by pressing the **Edit...** button. The following window then appears:



- In the Description field you can write a short description of the attachment to be filtered.

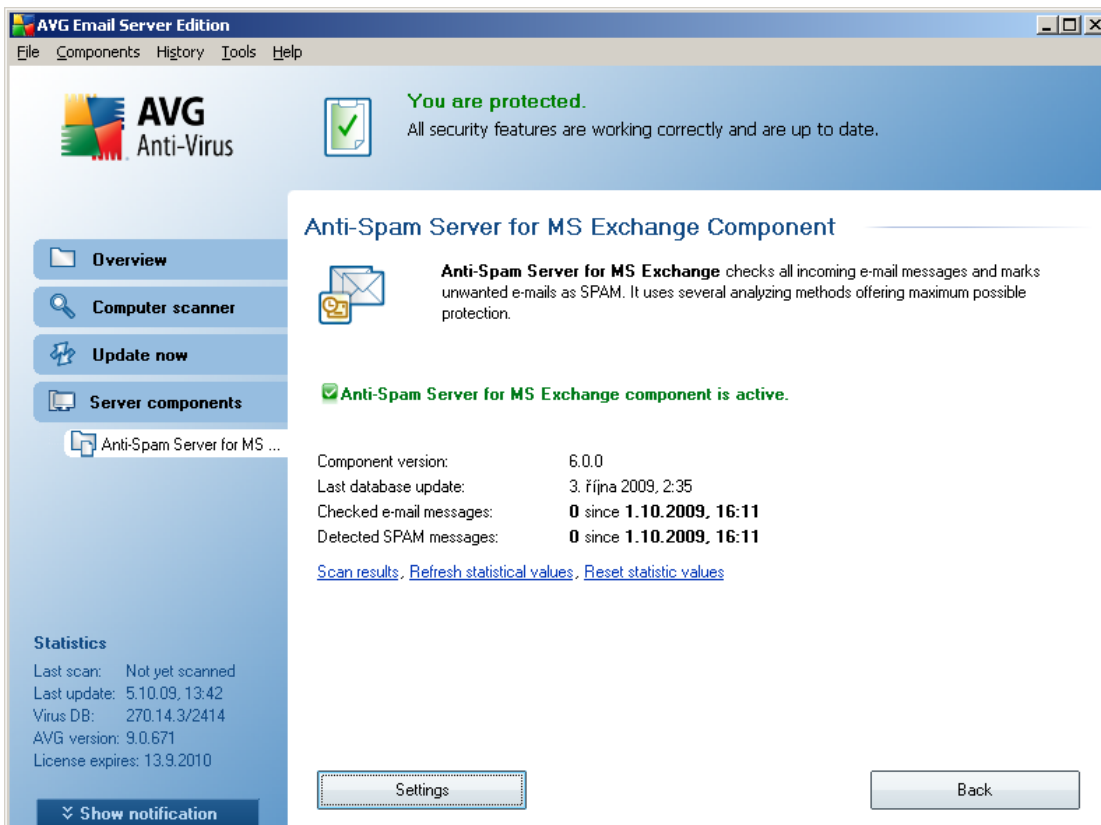


- In the If a mail message contains an attachment where field you can select the type of attachment (File name or MIME type). You can also choose a particular extension from the offered extensions list, or you can type the extension wildcard directly.

In the Then field you can decide whether to block the defined attachment or accept it.

## 7. Anti-Spam Configuration

### 7.1. Anti-Spam Interface

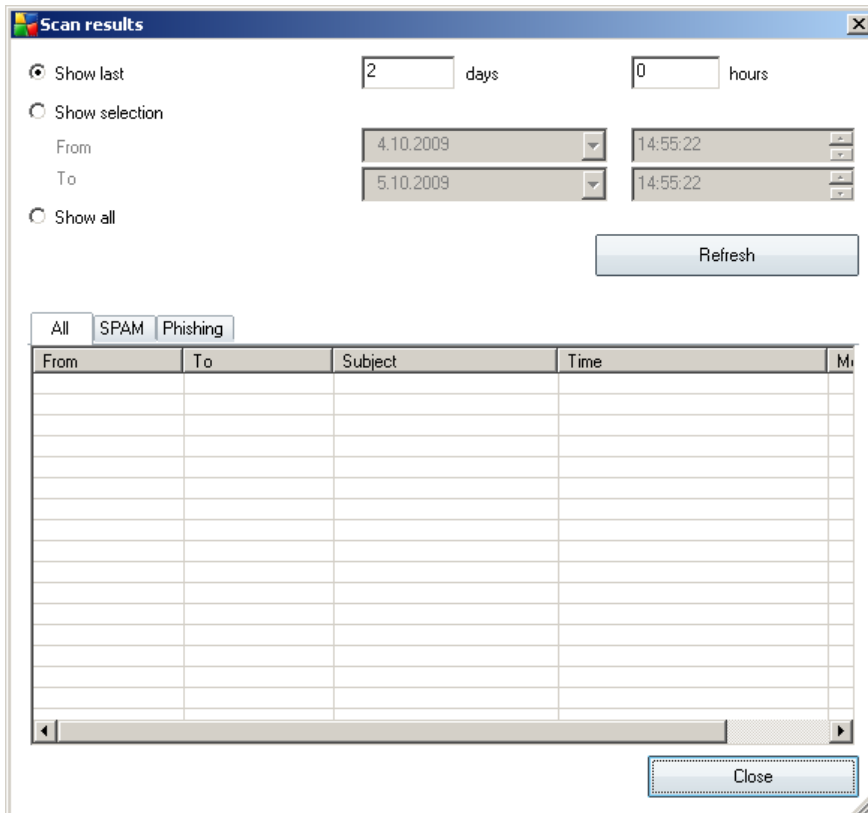


You will find the **Anti-Spam** server component's dialog in the **Server Components** section (left menu). It contains a brief information about the functionality of the server component, information on its current status (*Anti-Spam Server for MS Exchange component is active.*), and some statistics.

Available links:

- **Scan Results**

Opens a new dialog where you can review anti-spam scan results:



Here you can check messages detected either as a SPAM (unwanted messages) or a Phishing attempt (an effort to steal your personal data, banking details, identity etc.). By default there are displayed only results for the last two days. You can change the displayed period by amending the following options:

- **Show last** - insert preferred days and hours.
- **Show selection** - choose a custom time and date interval.
- **Show all** - Displays results for the whole time period.

Use **Refresh** button to reload the results.

- **Refresh statistical values** - updates stats displayed above.
- **Reset statistical values** - resets all the stats to zero.

The working buttons are as follows:

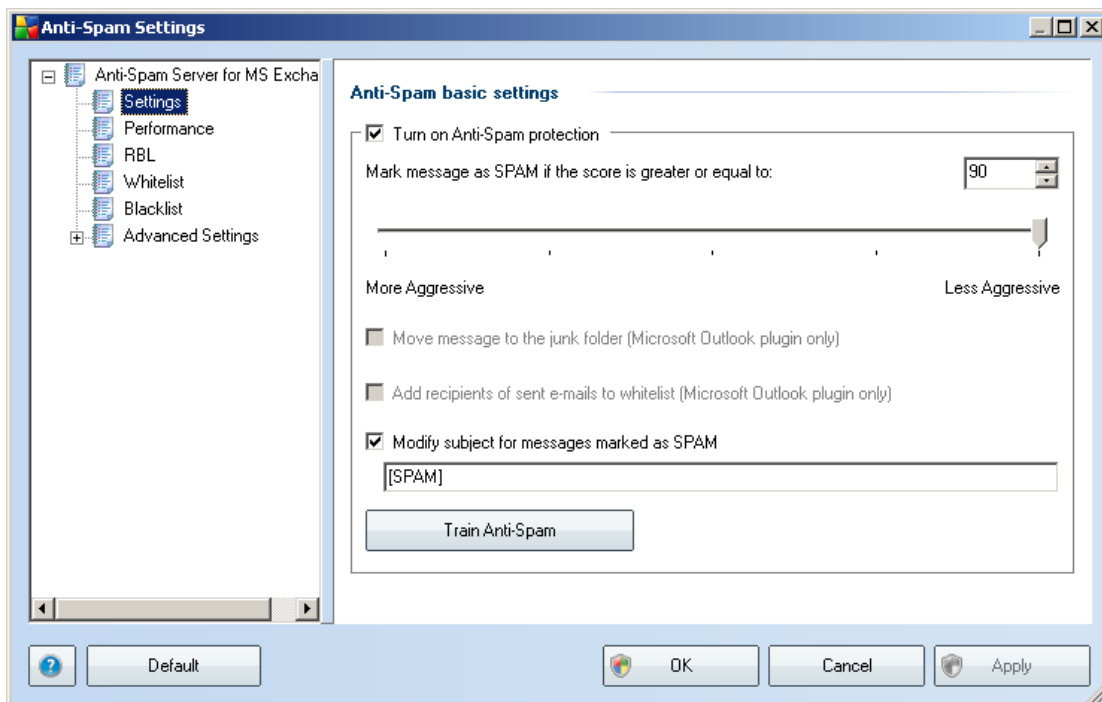
- **Settings** - use this button to open [Anti-Spam settings](#).
- **Back** - press this button to return to the Server components overview.

## 7.2. Anti-Spam Principles

Spam refers to unsolicited e-mail, mostly advertising a product or service that is mass mailed to a huge number of e-mail addresses at a time, filling recipients' mail boxes. Spam does not refer to legitimate commercial e-mail for which consumers have given their consent. Spam is not only annoying, but also can often be a source of scams, viruses or offensive content.

**Anti-Spam** checks all incoming e-mail messages and marks unwanted e-mails as SPAM. It uses several analyzing methods to process each e-mail message, offering maximum possible protection against unwanted e-mail messages.

## 7.3. Anti-Spam Settings



In the **Anti-Spam basic settings** dialog you can check the **Turn on Anti-Spam protection** checkbox to allow/forbid the anti-spam scanning of e-mail communication.

In this dialog you can also select more or less aggressive scoring measures. The **Anti-Spam** filter assigns each message a score (*i.e. how similar the message content is to SPAM*) based on several dynamic scanning techniques. You can adjust the **Mark message as spam if the score is greater or equal to** setting by either typing the value (*0 to 100*) or by moving the slider left or right (*using the slider, the range of values is limited to 50-90*).

Generally we recommended setting the threshold between 50-90, or if you are really unsure, to 90. Here is a general review of the scoring threshold:



- **Value 90-99** - Most incoming e-mail messages will be delivered normally (without being marked as [spam](#)). The most easily identified [spam](#) will be filtered out, but a significant amount of [spam](#) may still be allowed through.
- **Value 80-89** - E-mail messages likely to be [spam](#) will be filtered out. Some non-spam messages may be incorrectly filtered as well.
- **Value 60-79** - Considered as a quite aggressive configuration. E-mail messages that are possibly [spam](#) will be filtered out. Non-spam messages are likely to be caught as well.
- **Value 1-59** - Very aggressive configuration. Non-spam e-mail messages are as likely to be caught as real [spam](#) messages. This threshold range is not recommended for normal use.
- **Value 0** - In this mode, you will only receive e-mail messages from senders in your [Whitelist](#). Any other e-mail messages will be considered as [spam](#). **This threshold range is not recommended for normal use.**

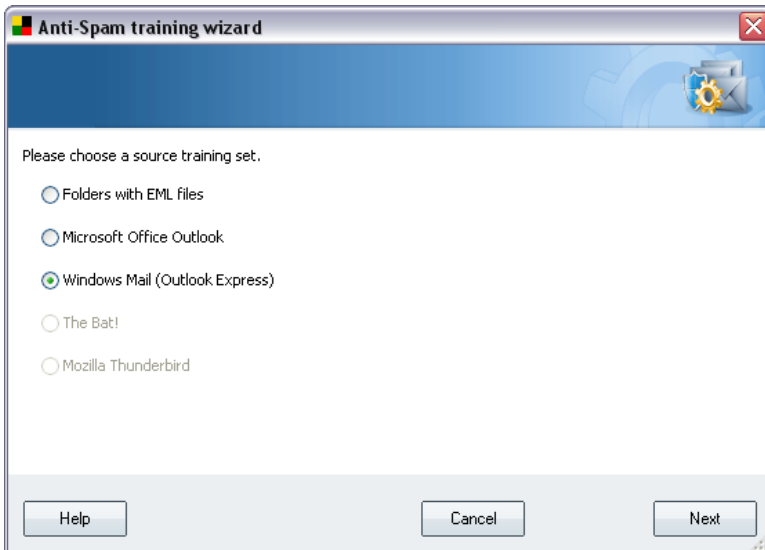
You can further define how the detected [spam](#) e-mail messages should be treated:

- **Modify subject for messages marked as spam** - tick this check box if you would like all messages detected as [spam](#) to be marked with a specific word or character in the e-mail subject field; the desired text can be typed in the activated text field.

**Train Anti-Spam** button opens the [Anti-Spam training wizard](#) described in details in the [next chapter](#).

### 7.3.1. Anti-Spam Training Wizard

The first dialog of the **Anti-Spam Training Wizard** asks you to select the source of e-mail messages you want to use for training. Usually, you will want to use either e-mails that have been incorrectly marked as SPAM, or spam messages that have not been recognized.



There are the following options to choose from:

- **A specific e-mail client** - if you use one of the listed e-mail clients (*MS Outlook, Outlook Express, The Bat!, Mozilla Thunderbird*), simply select the respective option
- **Folder with EML files** - if you use any other e-mail program, you should first save the messages to a specific folder (in *.eml format*), or make sure that you know the location of your e-mail client message folders. Then select **Folder with EML files**, which will enable you to locate the desired folder in the next step

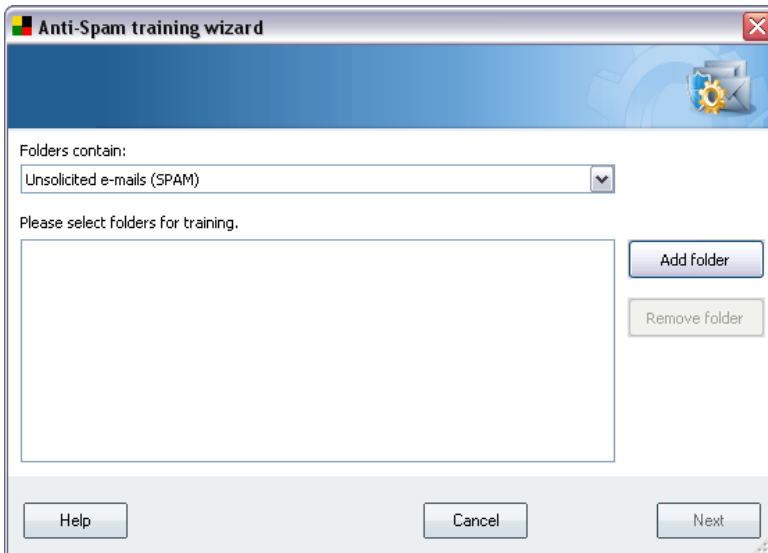
For faster and easier training process, it is a good idea to sort the e-mails in the folders beforehand, so that the folder you will use for training contains only the training messages (either wanted, or unwanted). However, it is not necessary, as you will be able to filter the e-mails later on.

Select the appropriate option and click **Next** to continue the wizard.

### 7.3.2. Select Folder with Messages

Dialog displayed in this step depends on your previous selection.

#### **Folders with EML files**



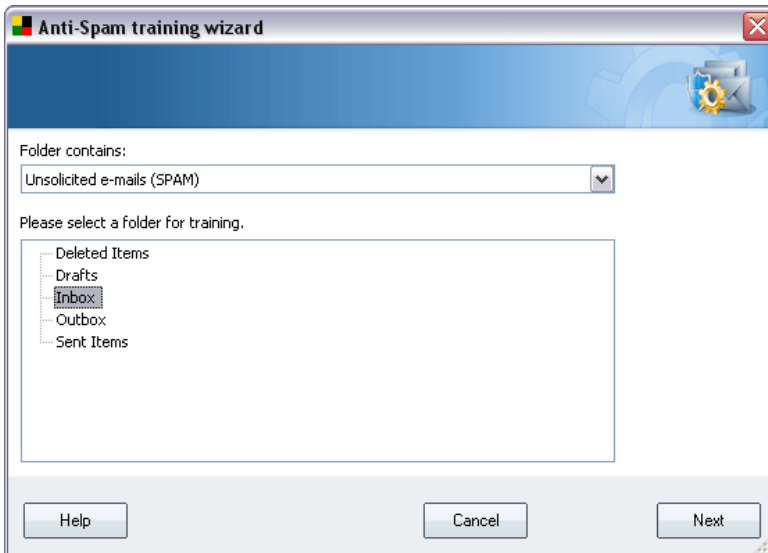
In this dialog, please select the folder with the messages you want to use for training. Press the **Add folder** button to locate the folder with the .eml files (*saved e-mail messages*). The selected folder will then be displayed in the dialog.

In the **Folders contain** drop-down menu, set one of the two options - whether the selected folder contains wanted (*HAM*), or unsolicited (*SPAM*) messages. Please note that you will be able to filter the messages in the next step, so the folder does not have to contain only training e-mails. You can also remove unwanted selected folders from the list by clicking the **Remove folder** button.

When done, click **Next** and proceed to [Message filtering options](#).

### **Specific e-mail client**

Once you confirm one of the options, new dialog will appear.

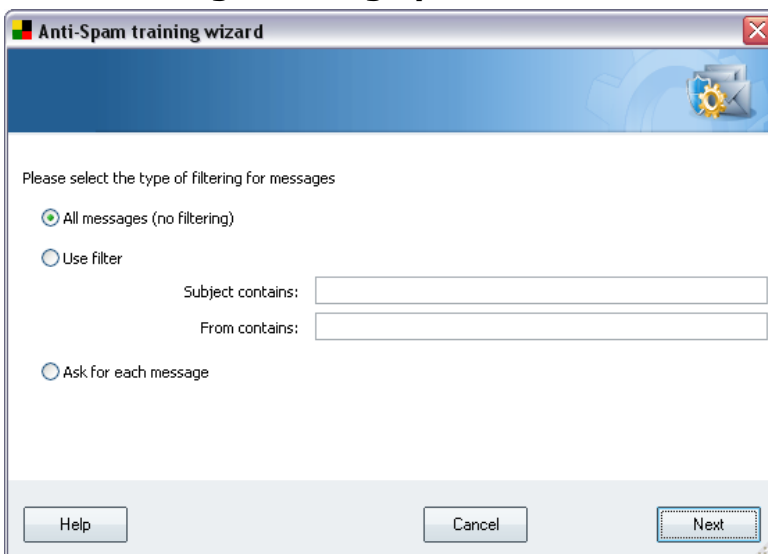


**Note:** In case of Microsoft Office Outlook, you will be prompted to select the MS Office Outlook profile first.

In the **Folders contain** drop-down menu, set one of the two options - whether the selected folder contains wanted (*HAM*), or unsolicited (*SPAM*) messages. Please note that you will be able to filter the messages in the next step, so the folder does not have to contain only training e-mails. A navigation tree of the selected e-mail client is already displayed in the main section of the dialog. Please locate the desired folder in the tree and highlight it with your mouse.

When done, click **Next** and proceed to [Message filtering options](#).

### 7.3.3. Message filtering options



In this dialog, you can set filtering of the e-mail messages.

If you are sure that the selected folder contains only messages you want to use for training, select the **All messages (no filtering)** option.

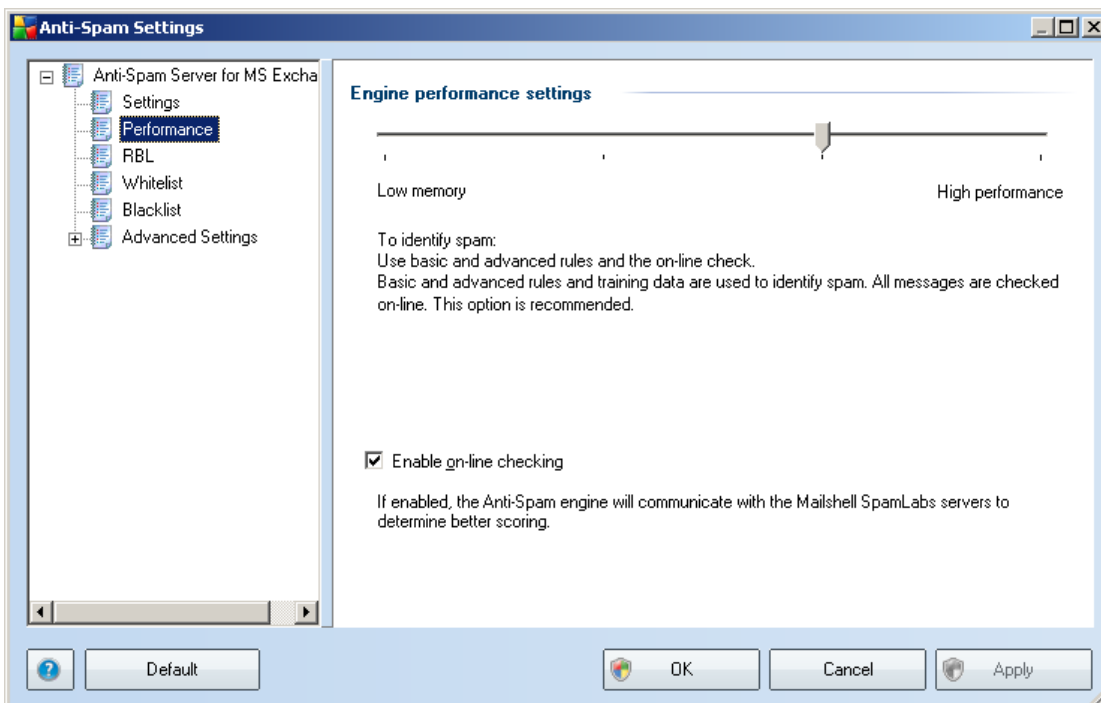
If you are unsure about the messages contained in the folder, and you want the wizard to ask you about every single message (so that you can determine whether to use it for training or not), select the **Ask for each message** option.

For more advanced filtering, select the **Use filter** option. You can fill in a word (*name*), part of a word, or phrase to be searched for in the e-mail subject and/or the sender's field. All messages matching exactly the entered criteria will be used for the training, without further prompting.

**Attention!:** When you fill in both text fields, addresses that match just one of the two conditions will be used, too!

When the appropriate option has been selected, click **Next**. The following dialog will be informative only, telling you that the wizard is ready to process the messages. To start training, click the **Next** button again. Training will then start according to previously selected conditions.

## 7.4. Performance



The **Engine performance settings** dialog (linked to via the **Performance** item of the left navigation) offers the **Anti-Spam** component performance settings. Move the

slider left or right to change the level of scanning performance ranging between **Low memory** / **High performance** modes.

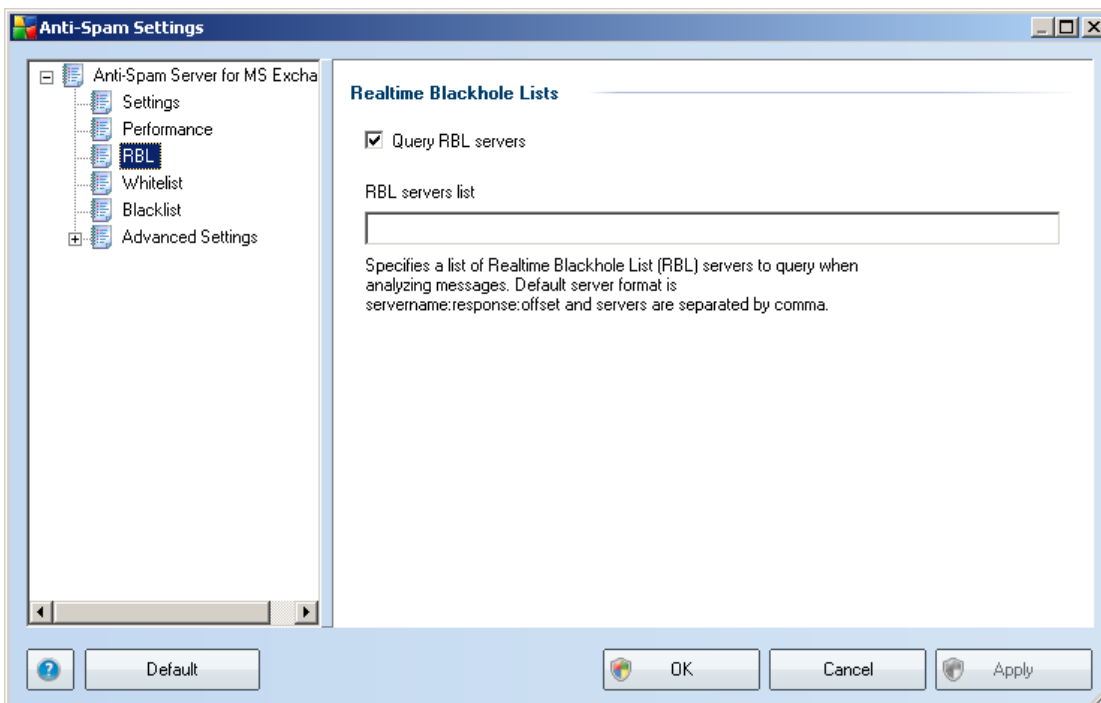
- **Low memory** - during the scanning process to identify [spam](#), no rules will be used. Only training data will be used for identification. This mode is not recommended for common use, unless the computer hardware is really poor.
- **High performance** - this mode will consume large amount of memory. During the scanning process to identify [spam](#), the following features will be used: rules and [spam](#) database cache, basic and advanced rules, spammer IP addresses and spammer databases.

The **Enable on-line checking** item is on by default. It results in more precise [spam](#) detection via communication with the [Mailshell](#) servers, i.e. the scanned data will be compared with [Mailshell](#) databases online.

**Generally it is recommended to keep the default settings and only change them if you have a valid reason to do so. Any changes to this configuration should only be done by expert users!**

## 7.5. RBL

The **RBL** item open an editing dialog called **Realtime Blackhole Lists**:



In this dialog you can switch on/off the **Query RBL servers** function.

The RBL (*Realtime Blackhole List*) server is a DNS server with an extensive database of known spam senders. When this feature is switched on, all e-mail messages will be verified against the RBL server database and marked as [spam](#) if identical to any of the database entries.

The RBL servers databases contain the latest up-to-the-minute spam fingerprints, to provide the very best and most accurate [spam](#) detection. This feature is especially useful for users who receive large amounts of spam that is not being normally detected by the Anti-Spam engine.

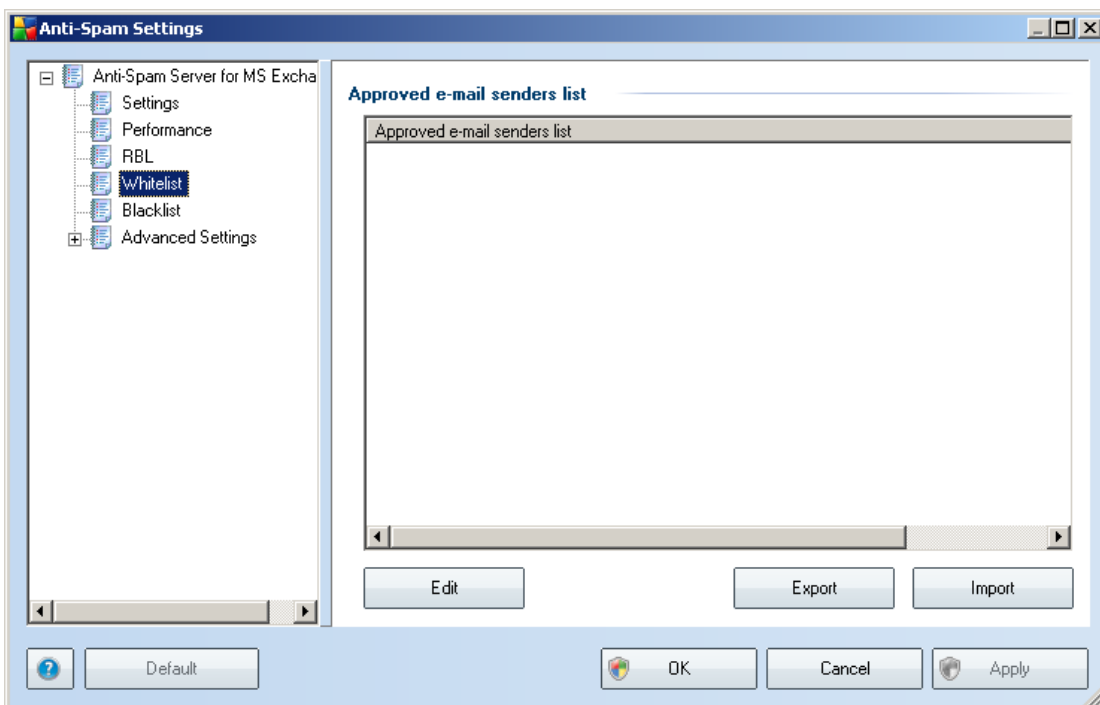
The **RBL servers list** allows you to define specific RBL server locations. By default, two RBL server addresses are specified. We recommend to keep the default settings unless you are an experienced user and really need to change these settings!

**Note:** Enabling this feature may, on some systems and configurations, slow down the e-mail receiving process, as every single message must be verified against the RBL server database.

**No personal data is sent to the server!**

## 7.6. Whitelist

The **Whitelist** item opens a dialog with a global list of approved sender e-mail addresses and domain names whose messages will never be marked as [spam](#).



In the editing interface you can compile a list of senders that you are sure will never

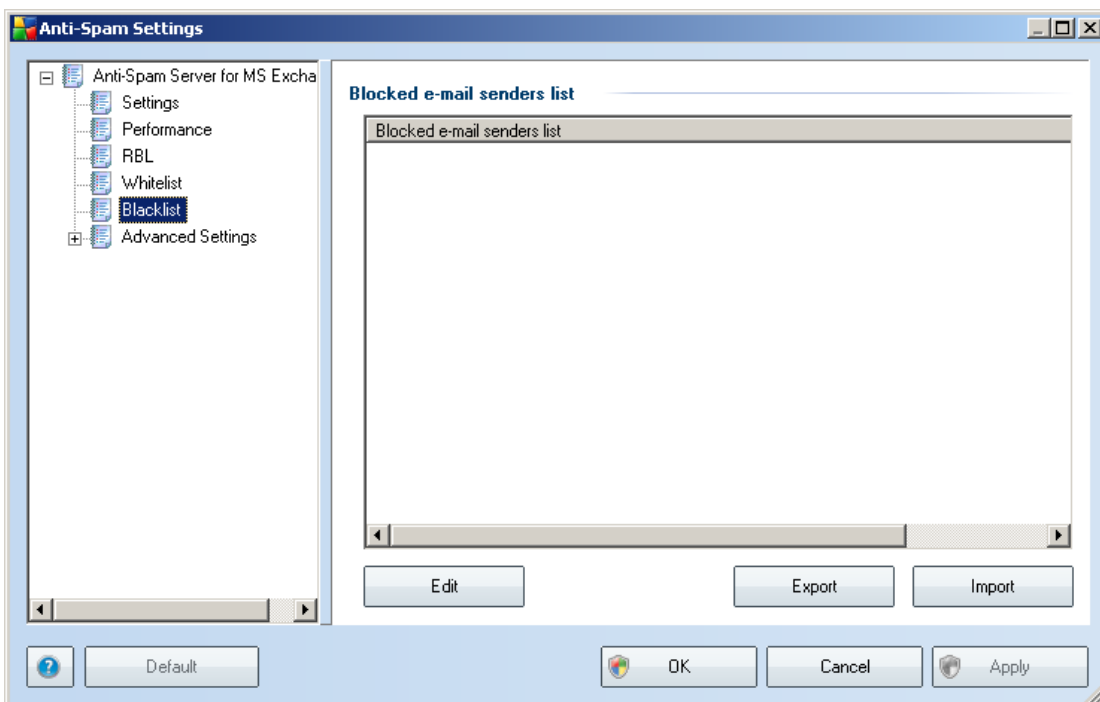
send you unwanted messages ([spam](#)). You can also compile a list of full domain names (e.g. *avg.com*), that you know do not generate spam messages.

Once you have such a list of senders and/or domain names prepared, you can enter them by either of the following methods: by direct entry of each e-mail address or by importing the whole list of addresses at once. The following control buttons are available:

- **Edit** - press this button to open a dialog, where you can manually enter a list of addresses (you can also use *copy and paste*). Insert one item (sender, domain name) per line.
- **Import** - if you already have a text file of email addresses/domain names prepared, you can simply import it by selecting this button. The input file must be in plain text format, and the content must contain only one item (address, domain name) per line.
- **Export** - if you decide to export the records for some purpose, you can do so by pressing this button. All records will be saved to a plain text file.

## 7.7. Blacklist

The **Blacklist** item opens a dialog with a global list of blocked sender e-mail addresses and domain names whose messages will always be marked as [spam](#).



In the editing interface you can compile a list of senders that you expect to send you



unwanted messages ([spam](#)). You can also compile a list of full domain names (e.g. *spammingcompany.com*), that you expect or receive spam messages from. All e-mail from the listed addresses/domains will be identified as spam.

Once you have such a list of senders and/or domain names prepared, you can enter them by either of the following methods: by direct entry of each e-mail address or by importing the whole list of addresses at once. The following control buttons are available:

- **Edit** - press this button to open a dialog, where you can manually enter a list of addresses (you can also use *copy and paste*). Insert one item (sender, domain name) per line.
- **Import** - if you already have a text file of email addresses/domain names prepared, you can simply import it by selecting this button. The input file must be in plain text format, and the content must contain only one item (address, domain name) per line.
- **Export** - if you decide to export the records for some purpose, you can do so by pressing this button. All records will be saved to a plain text file.

## 7.8. Advanced Settings

***Typically it is recommended to keep the default settings and only change them if you have a valid reason to do so. Any changes to configuration should only be done by expert users!***

If you still believe you need to change the Anti-Spam configuration at the very advanced level, please follow the instructions provided directly in the user interface. Generally, in each dialog you will find one single specific feature and you can edit it - its description is always included in the dialog itself:

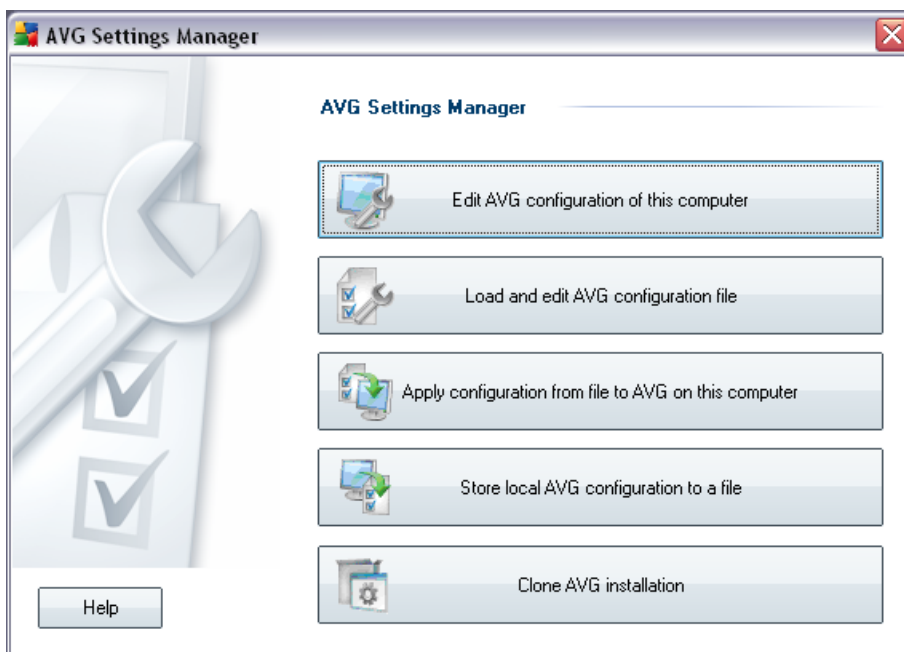
- **Cache** - fingerprint, domain reputation, LegitRepute
- **Training** - word training, score history, score offset, maximum word entries, auto training threshold, weight, write buffer
- **Filtering** - language list, country list, approved IPs, blocked IPs, blocked countries, blocked charsets, spoofed senders
- **RBL** - RBL servers, multihit, threshold, timeout, maximum IPs
- **Internet connection** - timeout, proxy server, proxy server authentication

## 8. AVG Settings Manager

The **AVG Settings Manager** is a tool suitable mainly for smaller networks that allows you to copy, edit and distribute AVG configuration. The configuration can be saved to a portable device (USB flash drive etc.) and then applied manually to chosen stations.

The tool is included in the installation of AVG and available via Windows Start menu:

### **All Programs/AVG 9.0/AVG Settings Manager**



- **Edit AVG configuration of this computer**

Use this button to open dialog with advanced settings of your local AVG. All changes made here will be reflected also to the local AVG installation.

- **Load and edit AVG configuration file**

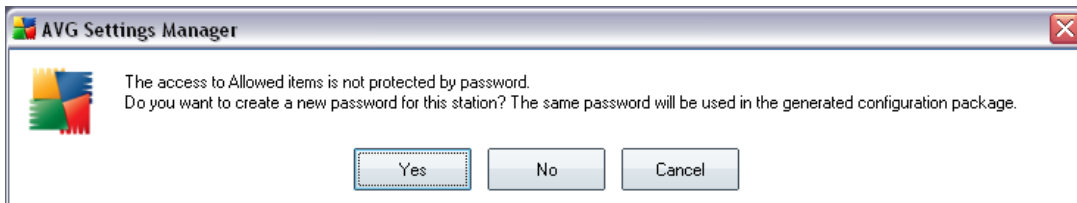
If you already have an AVG configuration file (.pck), use this button to open it for editing. Once you confirm your changes by the **OK** or **Apply** button, the file will be replaced with the new settings!

- **Apply configuration from file to AVG on this computer**

Use this button to open an AVG configuration file (.pck) and apply it to the local installation of AVG.

- **Store local AVG configuration to a file**

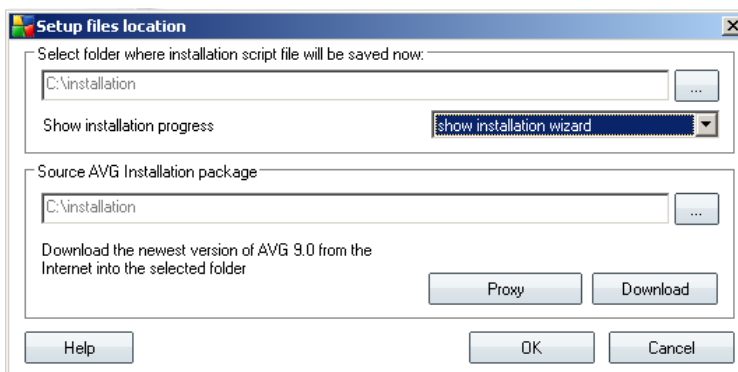
Use this button to save the AVG configuration file (.pck) of the local AVG installation. If you did not set a password for the Allowed actions, you may experience the following dialog:



Answer **Yes** if you wish to set the password for access to Allowed items now and then fill-in the required information and confirm your choice. Answer **No** to skip the password creation and continue to save the local AVG configuration to a file.

- **Clone AVG installation**

This option allows you to make an exact copy of the local AVG installation by creating an installation package with custom options. To proceed first select folder where the installation script will be saved.



Then from the drop-down menu select one of the following:

- **Hidden installation** - no information will be displayed during the setup process.
- **Show installation progress only** - the installation will not require any user attention, but the progress will be fully visible.
- **Show installation wizard** - the installation will be visible and user will need to manually confirm all steps.

Use either the **Download** button to download the latest available AVG installation package directly from the AVG website to the selected folder or manually put the AVG installation package into that folder.



You can use the **Proxy** button to define a proxy server settings if your network requires this for a successful connection.

By clicking **OK** the cloning process begins and should shortly finish. You may also experience a dialog asking about setting password to Allowed items (see above). Once finished, there should be **AvgSetup.bat** available in the chosen folder along with other files. If you run the **AvgSetup.bat** file, it will install AVG according to the parameters chosen above.



## 9. FAQ and Technical Support

Should you have any problems with your AVG, either business or technical, please refer to the **FAQ** section of the AVG website at <http://www.avg.com>.

If you do not succeed in finding help this way, contact the technical support department by email. Please use the contact form accessible from the system menu via **Help / Get help online**.