



# **Mio Moov DR03**

## **MiVue 128**

### **User Guide**

# Index

---

|  |    |
|--|----|
| 01 Table of Contents .....                   | 02 |
| 02 Product Features and Specifications ..... | 03 |
| 03 Caution Note .....                        | 05 |
| 04 Product Overview .....                    | 07 |
| 05 Getting Started .....                     | 09 |
| A. Setup                                     |    |
| Installation mode for car use .....          | 09 |
| Installation mode for bicycle use...         | 12 |
| B. Operating                                 |    |
| Recording function .....                     | 17 |
| Power off .....                              | 19 |
| C. Application Software                      |    |
| Installation .....                           | 20 |
| System Setup .....                           | 25 |
| 06 Appendix                                  |    |
| Troubleshooting .....                        | 27 |
| Package Contents .....                       | 28 |
| Safety Precautions .....                     | 29 |

# 01 Product Description

---

**DR-03's** lightweight stature surpasses all similar products available on the market, allowing for easy installation in your car, bicycle or motorcycle to keep a record of your journey; it can also be installed in your house to be used for home security. In addition to having outdoor recording and GPS functions, **DR-03** is also combined with a map, keeping a faithful record of your life. When recording photos and videos, although images are kept, however, you can only keep other information by adding additional remarks yourself as clues; as time passes by, these memories also become harder and harder to recall.

**DR-03** not only has recording functions, but also combines the precise information of GPS, allowing users to easily and accurately combine images with location and other geographic and travel information, faithfully recording your journey and making your memories richer and more complete!

## 02 Product Features and Specifications

---

- ▶ VGA (640×480) with 300,000 pixels
- ▶ MPEG-4 A/V encoding; AVI format output; VGA with 30FPS
- ▶ Storage: MicroSD card (Class6 or above suggested) with a maximum support of 32G
- ▶ Built-in high resolution CMOS lens; enhanced night vision effects
- ▶ Camera view angle: 82 degrees
- ▶ Built-in microphone
- ▶ Uses 2 AAA batteries or car charger
- ▶ Automatic overwrite function, allowing loop recording
- ▶ Supports audio recording
- ▶ Provides two recording modes: Starts recording after receiving GPS signal or direct recording
- ▶ Allows manual setting of time zone
- ▶ Supported languages: English, Traditional Chinese, Simplified Chinese and Russian
- ▶ User can manually switch between day or night mode to achieve best recording effects

# Product Features and Specifications

## Car recorder host

|           |              |
|-----------|--------------|
| Dimension | 98 x 34 28mm |
| Weight    | 47.5g        |
| Storage   | MicroSD      |

## GPS Module

|               |                    |
|---------------|--------------------|
| GPS Chipset   | SiRF Star III      |
| Frequency     | L1, 1575.42MHz     |
| Channels      | 12 CH for tracking |
| Antenna       | GPS Patch Antenna  |
| Datum         | WGS-84             |
| Cold Start    | 50 sec , average   |
| Warm Start    | 33 sec , average   |
| Hot Start     | 1 sec , average    |
| Reacquisition | < 1 sec            |
| Sensitivity   | -158dbm            |

\*Note: Above data is based on open sky condition.

## CMOS Sensor Module

|                          |  |
|--------------------------|--|
| Array Element            | 640x480 (VGA)  |
| Sensor Size              | 1/4"   |
| Image Transfer Rate(Max) | VGA, CIF, QCIF, QQCIF — 30 fps<br>QVGA, QQVGA — 60 fps |
| Scan Mode                | Progressive  |
| Electronic Exposure      | Up to 510:1 (for selected fps)                         |
| Pixel Size               | 6 μm x 6 μm  |
| Image Area               | 3.984 mm×2.952 mm                                      |
| Visible Angle            | 82 degrees   |

## Power

|                   |  |
|-------------------|--|
| Power Source      | 1. AAA x 2 Battery ( Ni-H ),<br>2. Car Adapter (Output: 3V/1A) |
| Power Consumption | 350mA 2.4V   |

## Environment

|                       |            |
|-----------------------|------------|
| Operating Temperature | Under 65°C |
| Operating Humidity    | 5% ~ 85%   |

## 03 Caution Note

---

### 1. GPS Accuracy

The Global Positioning System (GPS) technology is developed and managed by the U.S. Department of Defense. Based on policy or national security considerations, the U.S. has the right to adjust the positioning accuracy of this system without prior announcement. Users must consider the surrounding environment and judge when it is appropriate to use this system in order to maintain personal safety.

### 2. Signal Reception

The GPS satellite receiver chip is located at the end of the main device body. When used in a car, some car's windshield or the material of the window film might affect the product's satellite signal reception ability; also, the signal source of a speeding radar detector might interfere with the GPS signal as well and affect the operation of this product.

### 3. Positioning Floating

When you are at a fixed location, your position on the device map might be floating. This is because the satellite signal is unstable when there are buildings nearby and because Google Maps is open source software and therefore could not lock onto your location. Please rest assured as this is a normal condition.

### 4. Battery Usage

Battery usage time differs from brand to brand; after testing with a 1000mAh rechargeable battery, the usage time is approximately 2 hours.

## Caution Note

---

### **5. Memory Condition (If File Overwrite is not checked, the device will beep)**

When the memory card capacity has less than 175MB remaining, the recording indicator will flash quickly and the buzzer will beep three times every two minutes until the memory card only has 1MB left, then the system will force itself to shut down.

When the memory card capacity is  $\leq 32$ MB, this means that the memory card capacity left is not enough to start recording a new file, and the system will be forced to shut down. During this time if the user still tries to turn the device on, the system will still force itself to shut down after it has started up.

### **6. Low Power Warning**

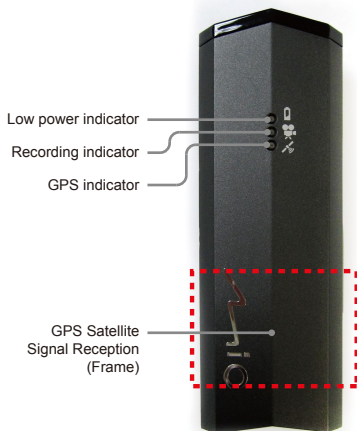
When the voltage is less than 2.2 volts, the low power indicator (green) will start to flash once every 0.5 seconds and the buzzer will beep three times; this warning will repeat itself once every two minutes. When the voltage is less than 2 volts, the product will automatically shut down. The number of times the warning repeats also differs between different brands of batteries; it usually repeats between 2-5 times.

### **7. Video File**

The system's default file size for every video file is 175MB with a length of 10 minutes; the file extension is AVI files.

## 04 Product Overview

- Top View -



- Bottom View -

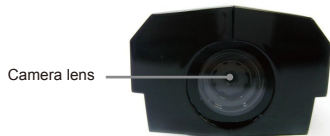




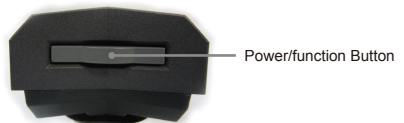
# Product Overview

---

**- Front View -**



**- Back View -**



**- Left View -**



## 05 Getting Started-Setup

### 1. Installation mode for car use



1. Please use Class6 or higher class MicroSD cards.



2. Combine the holder with device.

※ Please format your MicroSD card with Mio Manager PC Suite before inserting it.

## Getting Started-Setup

---



3. Combine the holder with the mounting frame and attach it to the windshield.



4. Start the car engine.
5. Plug the DC jack of the car adaptor into the main device and the other end to the car's cigarette lighter.

## Getting Started-Setup

---



6. Adjust the setting angle to get the best view.

※ Please do not insert or remove Micro SD card, when MiVue 128 is operating.

# Getting Started-Setup

---

## 2. Installation mode for bicycle use



1. Please use Class6 or higher class MicroSD cards.



2. Use your fingertip to push the battery cover towards the direction which the word PUSH indicates to easily open the battery cover.

※ Please format your MicroSD card with Mio Manager PC Suite before inserting it.

## Getting Started-Setup

---



3. Insert two AAA batteries according to the directions indicated.



4. Attach the holder onto the bottom of the device.

## Getting Started-Setup

---



5. Pull the silicon holder down from front to back to wrap it around the device. (you can decide whether to use the silicon holder or not)



6. Use the hand screw to tighten and firmly hold the bottom holder and the device in place.

## Getting Started-Setup

---



7. Combine the bicycle holder with the device with the bottom holder attached.



8. Loosen the screw, then select a suitable latch height and attach it to the bicycle, then tighten the screw again.



## Getting Started-Setup

---



9. Adjust the setting angle to get the best view.

※ Please format your MicroSD card with Mio Manager PC Suite before inserting it.

# Getting Started-Operating

---

## 1. Activating Recording Function



### A. Automatic Recording Mode (GPS positioning completes direct recording)

1) First insert the formatted memory card, then press the power/function button; the indicator will light up sequentially and the device will complete start up in approximately 1 second.

2) Then, the GPS indicator will flash continually with 0.5 second intervals, at this time it has not yet entered recording status. When GPS positioning is successful, the buzzer will “beep” twice and the recording indicator will light up and flash continually with 1 second intervals, and this is when the recording starts; the GPS indicator will flash with 3 second intervals.

# Getting Started-Operating

---

## **B. Manual Recording Mode (Force recording before the GPS has completed positioning)**

1) First insert the formatted memory card, then press the power/function button; the indicator will light up sequentially and the device will complete start up in approximately 1 second.

2) Then, the GPS indicator will flash continually with 0.5 second intervals, at this time it has not yet entered recording status. Press the power/function button again, the buzzer will “beep” twice and the recording indicator will light up and flash continually with 1 second intervals, this is when the recording starts; the GPS indicator will first flash with 0.5 second intervals before the GPS positioning is complete, and when GPS positioning is successful, the indicator will flash with 3 second intervals.  
second intervals.

# Getting Started-Operating

---

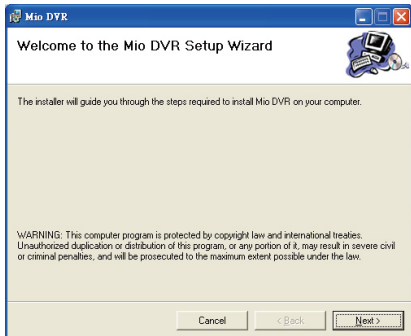
## 2. Powering Off



When the system is in automatic or manual recording mode, or before it started recording, press and hold the power/function button for 3 seconds and then release to power off the device.

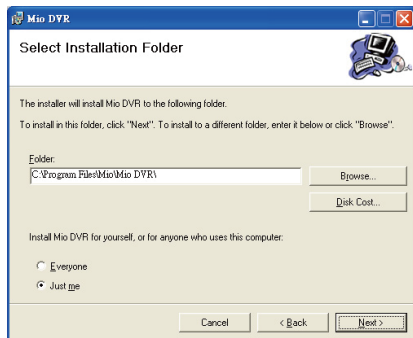
# Getting Started-Application Software

## 1. Installation of application software



1. Insert the CD-ROM into your computer.
2. The system will automatically pop up the setup window or you can also double-click on "Setup.exe" from the CD-ROM drive.


# Getting Started-Application Software



3. Click "Next" to continue installation.
4. When the application software is finished installing, the corresponding shortcut icon will appear on the desktop.

# Getting Started-Application Software



5. Remove the used MicroSD card from the device and connect it to the computer.
6. Double-click the icon  on the desktop to run the application program.

# Getting Started-Application Software



7. Select the language you wish to use.
8. Click the first icon to open the recording files stored on the MicroSD card.
9. The information of the opened video file will be displayed in this field.
10. Click the Play icon to start the video playback.



# Getting Started-Application Software



11. When the video is playing, the corresponding geographical location will also be marked on the map at the right side of the software. Click the icon at the top-right corner of the screen to enlarge the map.

12. When the video is playing, the speed, distance, time, longitude, latitude, altitude and direction information will be displayed here as well.

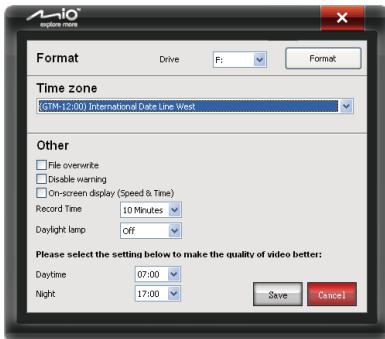
13. Click on the time bar to select the part you want to play.

24 14. Adjust playback volume, or click on the speaker icon to mute.

# Getting Started-System Setup



1. Remove the MicroSD card from the device and connect it with the computer, then execute the software.



2. Click on the tools icon to open the System Setup window.

## Getting Started-Application Software

---

|                          |   |
|--------------------------|---|
| <b>Format</b>            | The SD card must first be formatted using this function when used for the first time and before changing the previous settings! |
| <b>Time zone</b>         | Different time zones can be set according to different countries.   |
| <b>File overwrite</b>    | If the MicroSD card's capacity is full, the device will automatically overwrite older files.                                    |
| <b>Disable warning</b>   | Disables the memory capacity full and low power warnings.   |
| <b>On-screen display</b> | Displays the speed on the screen.   |
| <b>Record Time</b>       | Sets the continual recording time for every recording (10, 20, 30, 60 minutes)  |
| <b>Daylight lamp</b>     | Prevents water ripple interference for indoor recording.  |
| <b>Daytime</b>           | Suggested to record during day time.  |
| <b>Night</b>             | Suggested to record during night time.  |

3. After setting the system settings, remove the MicroSD card from the computer and again place it in the device; the device will automatically update these settings.

## 06 Appendix-Troubleshooting

---

This chapter will list some of the problems you might face when using this device and their solutions. Even if the following guide can not solve your problem, please do not dismantle this device on your own! Please send the product back to the store where you purchased it for maintenance.

| Question                          | Solution   |
|-----------------------------------|--|
| Power indicator does not light up | <ol style="list-style-type: none"><li>1. Install new batteries.</li><li>2. Unplug the car adaptor and reinsert it.</li></ol>   |
| Incorrect video date or time      | Set the proper time zone in System Settings before recording.  |
| No map information                | Please confirm whether the computer has internet connection before playing back the videos.  |
| No video file                     | Please format the MicroSD card before inserting it into the device.  |
| No GPS signal                     | <ol style="list-style-type: none"><li>1. To acquire GPS signal, you must power on this device at a cloudless place.</li><li>2. If you travel to another country, it might take over 3 minutes to complete GPS positioning.</li></ol> |

# Appendix-Package Contents



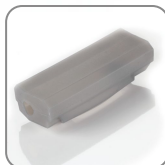
Mio DVR x 1



Mounting frame x 1  
(For car use)



Mounting frame x 1  
(for bicycle use)



Spill-resistant cover x 1  
(Class:54)



Holder for car x 1



Holder for bicycle x 1



Car adapter x 1



Application software  
CD-ROM x 1



User manual x 1



Quick Start Guide x 1

## Appendix-Safety Precautions

---

1. Please turn off the power when inserting or removing the MicroSD card, or else it could cause damage to the device or the MicroSD card.
2. This device is a very sophisticated product; please avoid dropping it or expose it to strong shaking or vibrations.
3. Please avoid placing this device at locations with high humidity or could be splashed by liquids.
4. The device casing is made with plastic; please avoid contact with sharp objects to avoid damages.
5. Please only use the included 3V/1A output power adapter.
6. Please turn the power off before cleaning; use only soft cloth to wipe it and use of liquid cleaners is prohibited.
7. Avoid exposing this device to extreme heat.
8. Please do not dismantle this device on your own, or it might result in electric shocks and voiding your warranty.

