

# EZN Plus Series

## Outdoor IR Bullet IP Camera

---

*Quick Installation Guide*



Copyright © EverFocus Electronics Corp,  
Release Date: October, 2012

## 1. Overview

The EZN Plus Series is a bullet type IP camera designed for outdoor use. The series comes in three models: **EZN3160 Plus / 3260 Plus / 3340 Plus**.

Model Name	Megapixel	WDR
EZN3160 Plus	1.3 MP	Yes
EZN3260 Plus	2 MP	Yes
EZN3340 Plus	3 MP	No



No.	Item Name	Descriptions
1	<b>TV-Out Connector</b>	Connects to a handheld test monitor for adjusting camera focus and zoom.
2	<b>Focus / Zoom Control</b>	Press this control to the left or right to adjust camera focus. To zoom in / out the camera view, press this control up or down.
3	<b>Reset Button</b>	Resets all configurations to the factory default settings.
4	<b>Lens</b>	Varifocal lens.
5	<b>Micro SD / SDHC Slot</b>	For inserting a micro SD / SDHC card.
6	<b>IR LEDs</b>	44 IR LEDs for infrared illumination in night vision applications.
7	<b>Light Sensor</b>	Detects lights.
8	<b>Camera Cover</b>	Remove the cover for adjusting camera focus and zoom / inserting a micro SD card or connecting to a handheld test monitor.
9	<b>Sunshield</b>	Protect the camera from the direct rays of the sun.

## System Requirements

Before installing, please check that your computer meets the following system requirements.

- Operating System: Microsoft Windows XP / Vista (32-bit) / 7 (32-bit)
- Microsoft Internet Explorer 7 or above

## Packing List

- EZN Plus Series Camera x 1
- Quick Mounting Ring x 1
- RJ-45 Connector x 1
- Mounting Kit x 1
  - Long Screw x 4 (for attaching the Quick Mounting Ring to the mounting surface)
  - Short Screw x 4 (for connecting the camera base to the quick Mount Ring)
  - Screw Anchor x 4 (in conjunction with Long Screw)
  - Hexagon Key x 1 (for adjusting the camera position)
  - Hexagon Wrench x 1 (for removing the sunshield)
  - Torx Wrench x 1 (for removing the lock tab)
  - Mounting Template x 1
- 4-Pin Terminal Block x 1
- Software CD x 1
- Quick Installation Guide x 1

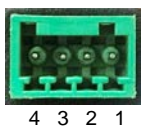
**Note:** Contact the shipper if any items appear to have been damaged in the shipping process. If any items are missing, notify your EverFocus Electronics Corp. Sales Representative or Customer Service Branch. Please also keep the shipping carton for possible future use.

## 2. 4-Pin Data Cable

The 4-Pin Data Cable provides connections for power, audio input / output and alarm input / output. The wires are illustrated and defined below. Note that microphones with external power supplies are required.



### **Pin Assignment for Alarm Input / Output**



Pin 1: Alarm GND  
Pin 2: Alarm In

Pin3: Alarm Out-  
Pin4: Alarm Out+

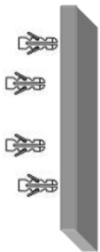
### 3. Installation

This installation guide provides the basic instructions on installing an EZN Plus bullet IP camera. For details, please refer to the *User's Manual* in the software CD.

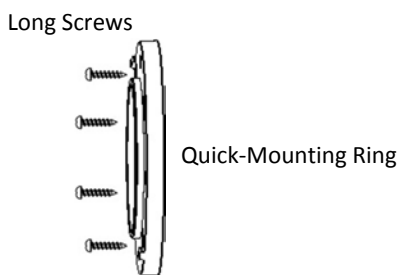
#### 3.1 Mounting and Wiring

Follow the steps below for mounting and wiring the camera.

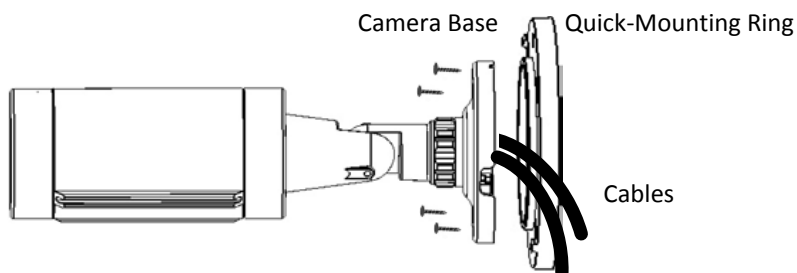
1. Before screwing the camera to the wall, drill four holes on the wall according to the hole-positions on the supplied Quick-Mounting Ring. If you wish to run the wires into the wall, drill another hole in the middle of the circular area within the Quick-Mounting Ring.
2. Push the four supplied anchors into the four holes on the wall.



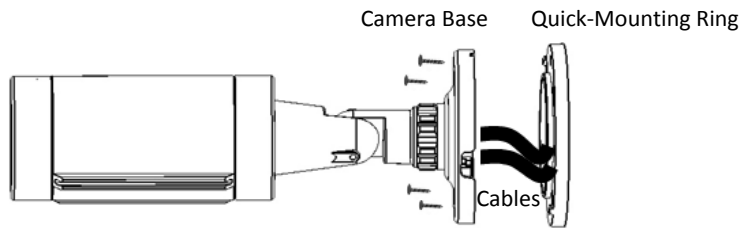
3. Place the Quick-Mounting Ring against the anchoring surface so that the holes line up. Screw the Quick-Mounting Ring to the wall using the supplied Long Screws.



4. Screw the camera body to the Quick-Mounting Ring using the supplied four Short Screws.
  - a. If you want to wire the cables from the side of the camera base:

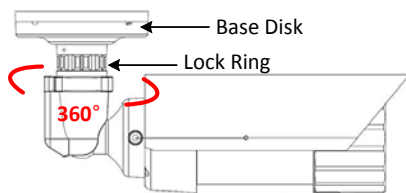


- b. If you want to wire the cables through the wall, feed the cables through the wall and then screw the camera base to the Quick-Mounting Ring.

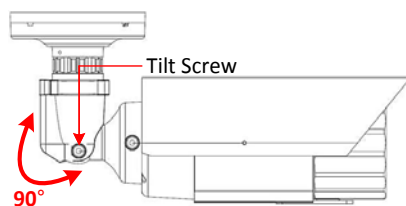


5. Connect the network, power and other cables of the camera to the related devices. Please refer to 2. *4-Pin Data Cable* earlier in this Quick Installation Guide.
6. Optionally insert a micro SD / SDHC card into the card slot. Please refer to 3.2 *Inserting a Micro SD Card* later in this Quick Installation Guide.
7. Access the camera live view. See 4. *Accessing the Camera*. Or connect a handheld test monitor to the TV-out connector on the camera module for setting image zoom and focus. Please refer to 3.3 *Adjusting Camera Focus / Zoom* later in this Quick Installation Guide.
8. Adjust the camera angles.

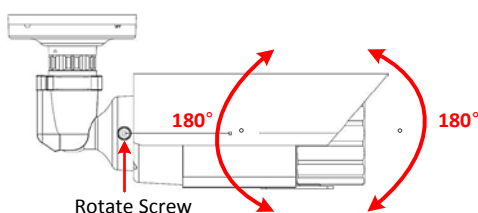
**Pan Adjustment:** Twist the Base Disk forcefully until it unscrews from the Lock Ring. Rotate the camera 360° to the desired position and then screw the Lock Ring until it locks against the Base Disk.



**Tilt Adjustment:** Loosen the Tilt Screw using the provided hexagon key and adjust the tilt angle 90°.



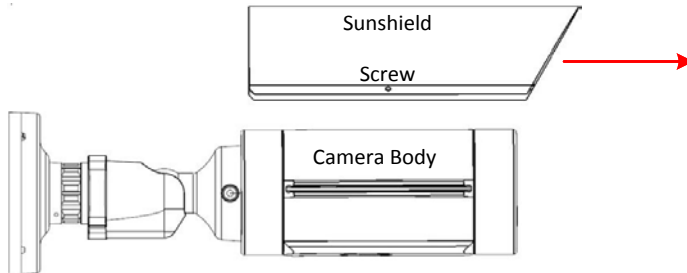
**Rotational Adjustment:** Loosen the Rotate Screws on both side of the camera body using the providing hexagon key and rotate the camera 360° (180° to the left / 180° to the right).



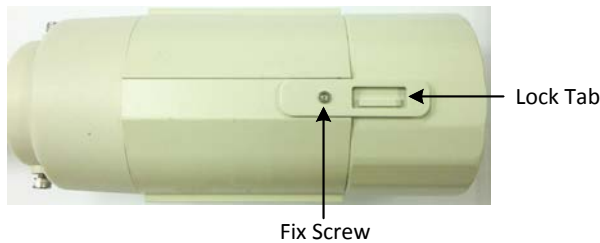
### 3.2 Inserting a Micro SD Card

You can optionally insert a micro SD card to the card slot on the camera module for recording videos.

1. Remove the Sunshield from the camera. Loosen the screw on the Sunshield using the provided hexagon wrench. Slide the Sunshield out from the rail on the camera body.



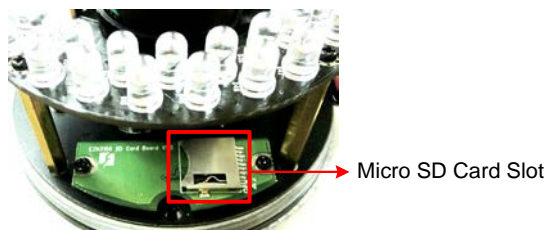
2. Unscrew the Fix Screw using the provided torx wrench and then remove the Lock Tab.



3. Rotate and then remove the camera cover.



4. Insert a micro SD card into the card slot.



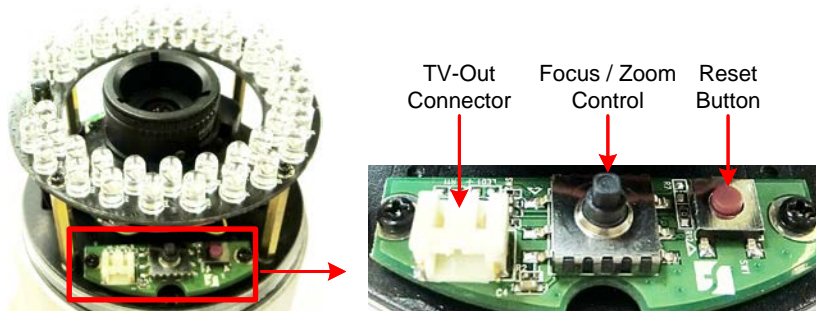
5. Slide the Sunshield back to the camera body.

**Note:** When properly installed, the rear-side of the Sunshield should be even with the rear-side of the camera body. Extending the Sunshield in order to shade the lens will compromise the image quality.

### 3.3 Adjusting Camera Focus / Zoom

After wiring the cables, you can adjust the camera focus and zoom for better image quality.

1. Follow **Steps 1 ~ 3** in 3.2 *Inserting a Micro SD Card* to remove the camera cover.
2. Connect the power cable of the camera to the power source.
3. Connect a handheld test monitor to the TV-out connector for setting image zoom and focus.
4. To adjust camera focus, push the **Focus / Zoom Control** to the left or right. To zoom in / out the camera, push the **Focus / Zoom Control** up or down.



5. Slide the Sunshield back to the camera body.

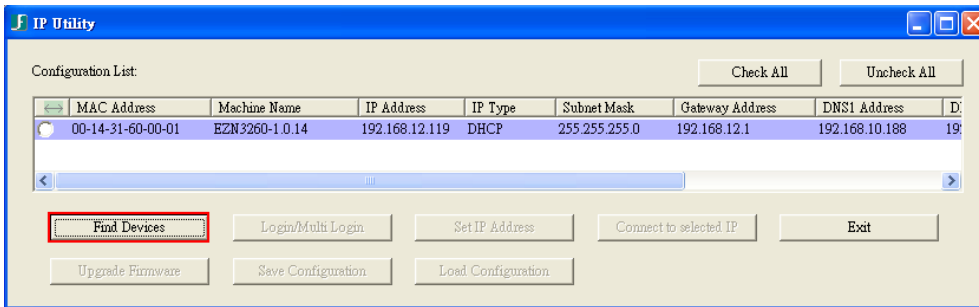
**Note:** When properly installed, the rear-side of the Sunshield should be even with the rear-side of the camera body. Extending the Sunshield in order to shade the lens will compromise the image quality.

## 4. Accessing the Camera

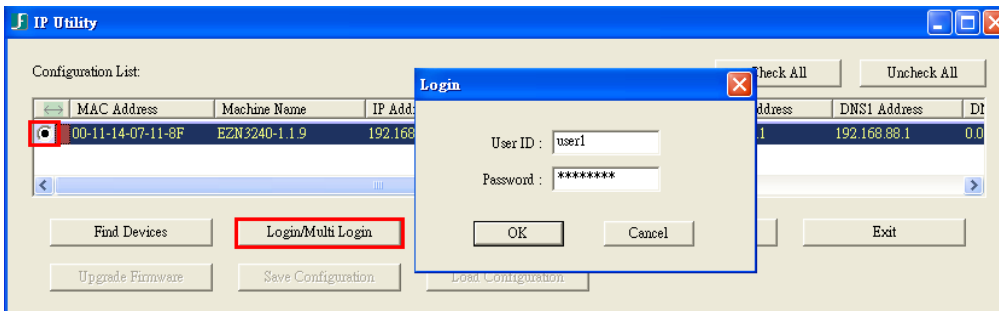
You have to assign an IP address for your camera to be accessible. To assign an IP address to the camera, use the **IP Utility (IPU)** software included in the software CD. Please connect the camera in the same LAN of your computer.



1. Install and then start the IPU program . The following dialog box appears.



2. Click **Find Devices** to search the cameras connected in the LAN. The default network values of the cameras will be displayed. By default, the network protocol of the camera is **DHCP**.
3. To configure the network settings, select a camera and then click **Login/Multi Login** to log in.

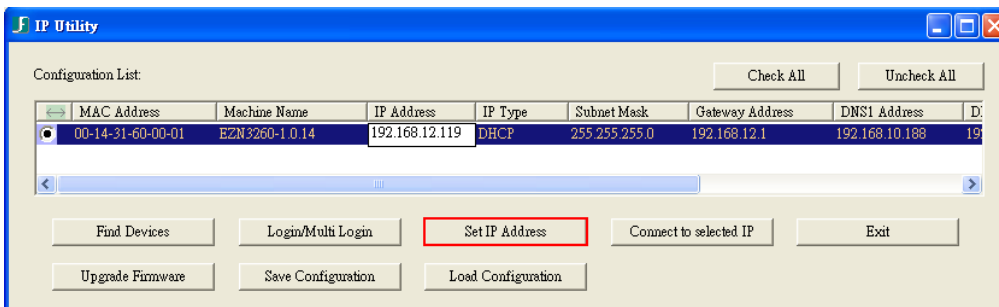


4. Type the user ID and password. Click **OK**.

**Note:**

1. The default user ID is **user1** and the default password is **11111111**.
2. If you select more than one camera that has the same user ID / password, you will be able to log in several cameras at once.

5. To change the IP address, double-click the IP Address of the camera. Type a new IP address and then click **Set IP Address** to save the settings.

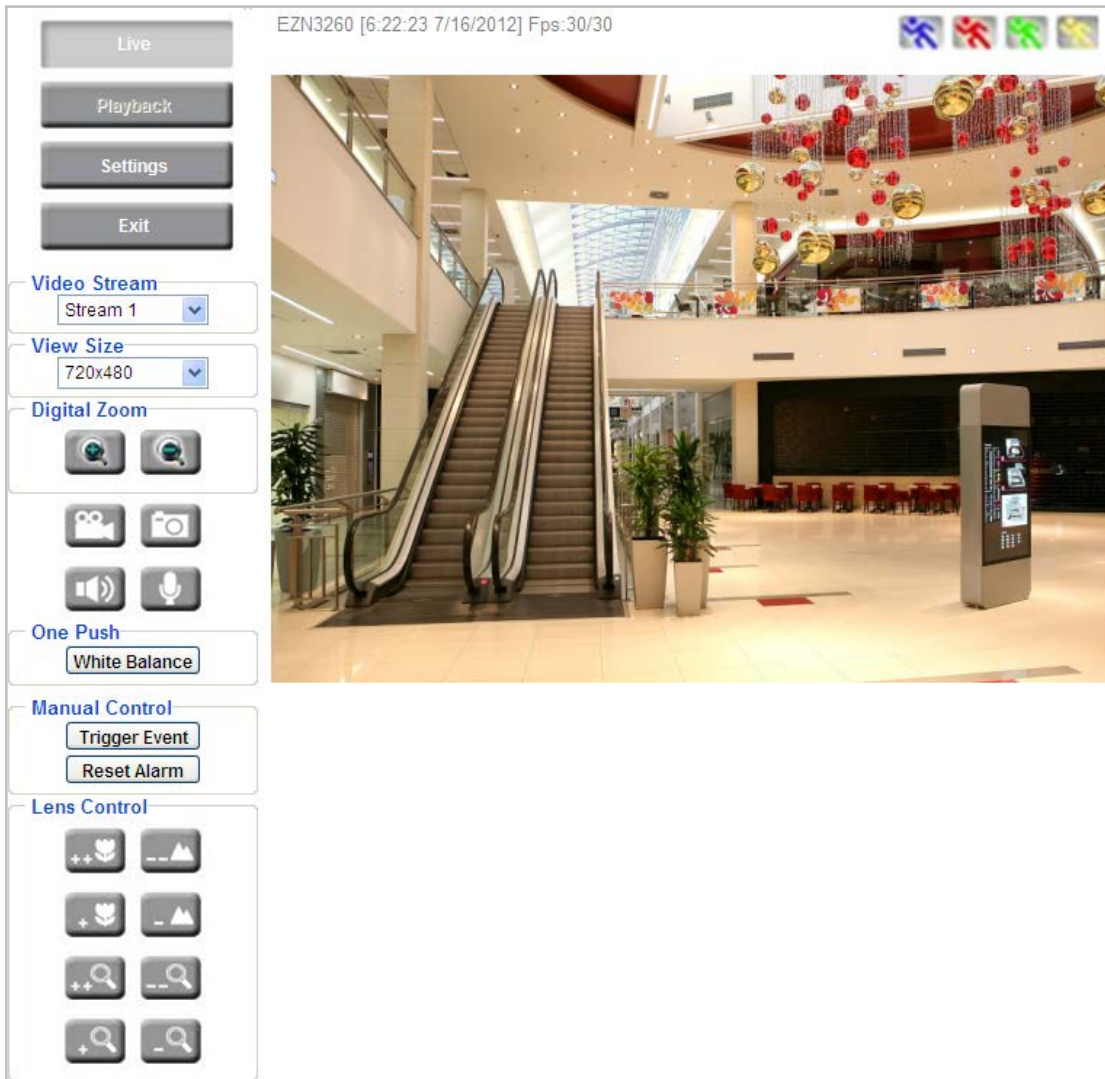




You can also change the other settings by double-clicking the values. After configuring the values, click **Save Configuration**.

**Note:** Most networks uses DHCP to assign IP address, if you are unsure of your network settings, please consult your network administrators for configuration details.

6. To access the camera, highlight the camera and click **Connect to Selected IP**. The Internet Explorer window pops up.
7. Type the user ID and password to log in. The Live View window of the camera appears.



**Note:**

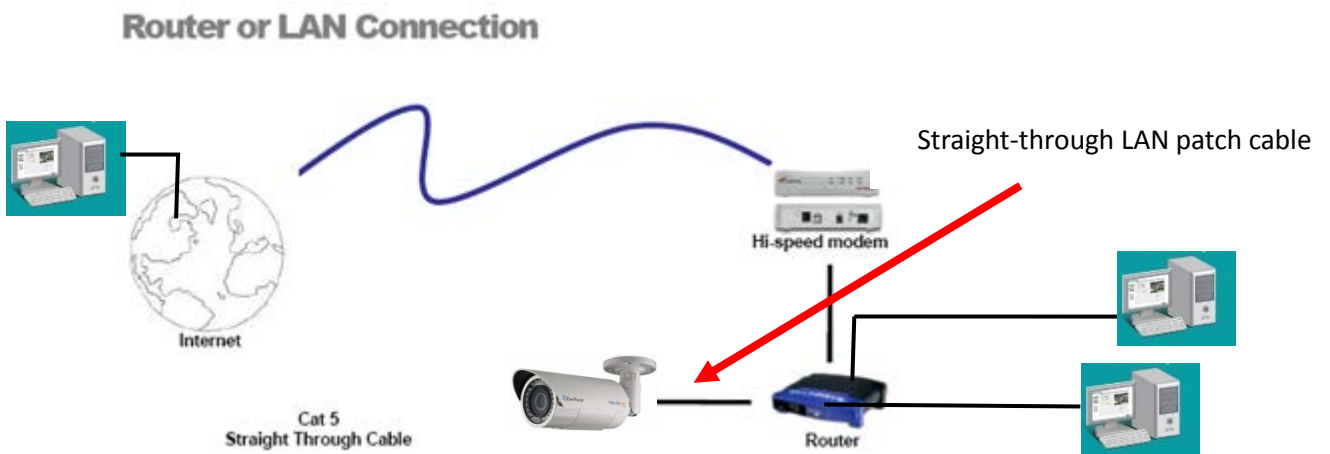
1. You might be required to download **ActiveX** for viewing the camera feed. If asked, click **Yes**.
2. To enable Remove Live View, Firmware Upgrade and ActiveX Prompt on Internet Explorer, some settings have to be complete. Please refer to *5.2 Settings for Microsoft Internet Explorer* in the *User's Manual*.

## 5. Network Connections

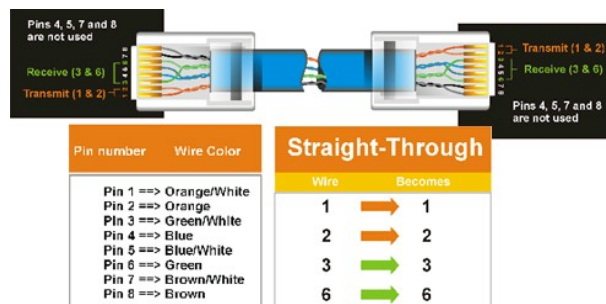
You can use one of the methods below to connect the camera to the network.

### Router or LAN Connection

This is the most common connection in which the IP camera is connected to a router and allows multiple users on and off site to see the IP camera on a LAN/WAN (Internet). The camera must be assigned an IP address that is compatible with its LAN. By setting up port forwarding on the router, you can remotely access the cameras from outside of the LAN via the Internet. To remotely access the Web interface of the IP camera, please refer to 7.3.2 DDNS in the *User's Manual*. To set up port forwarding, please consult the manual of the router.



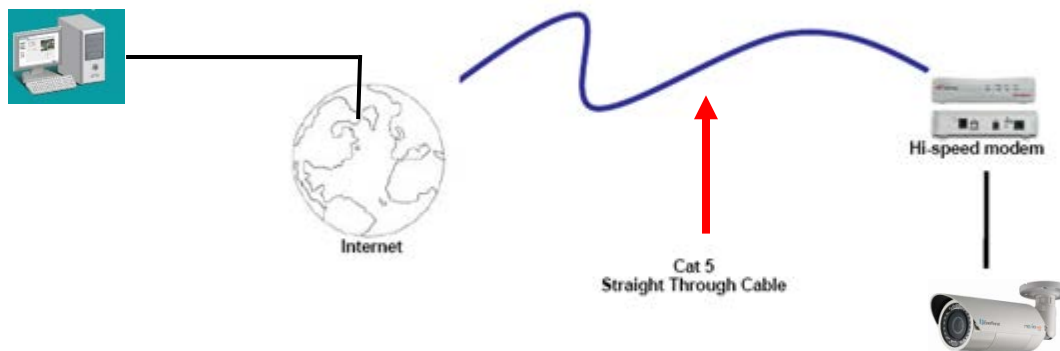
Right: Pinout of a straight-through cable.



### Direct High-Speed Connection

In a Direct High-Speed Connection, the camera connects directly to a modem without the need for a router. You need to set the static or dynamic WAN IP address assigned by your ISP (Internet Service Provider) in the camera's configuration web pages. To access the camera, just type "<http://xxx>", where xxx is the IP address given by your ISP. If you have a dynamic IP address, this connection may require that you use DDNS for a reliable connection. Please refer to 7.3.2 DDNS in the *User's Manual*.

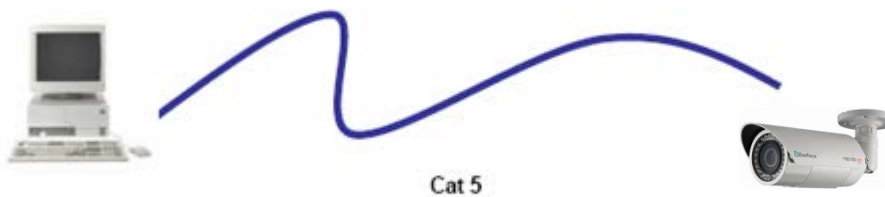
#### Direct High Speed Modem Connection



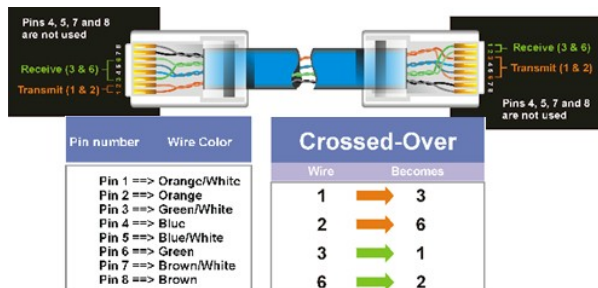
### One-to-One Connection (Directly from PC to IP Camera)

You can connect directly without using a switch, router or modem. However, only the PC connected to the camera will be able to view the IP camera. You will also have to manually assign a compatible IP address to both the computer and the IP camera. Unless the PC has another network connection, the IP camera will be the only network device visible to the PC. See the diagram below:

#### Simple One to One Connection



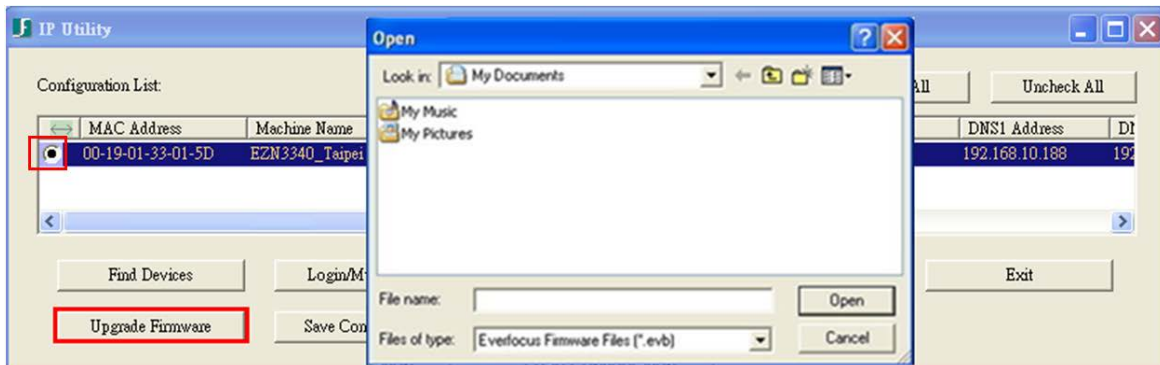
Right: Pinout of a crossed-over cable.



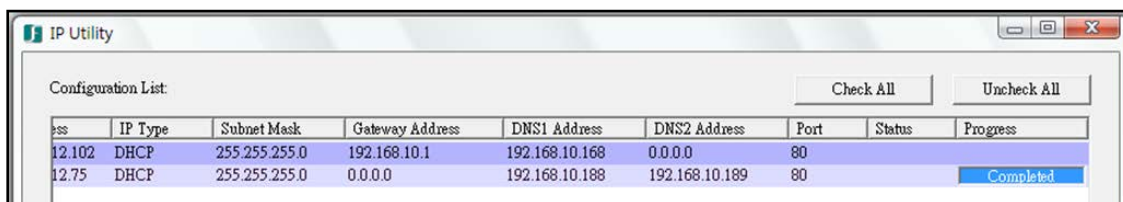
## 6. Upgrading Firmware

You can upgrade camera's firmware using the **IP Utility** software included in the software CD.

1. Follow **Step 1** to **Step 4** in *4. Accessing the Camera* to log in the camera.
2. Select the camera and then click **Upgrade Firmware**. A browsing window appears.



3. Select the **firmware file (.evb)** and then click **Open**. The IP Utility will automatically upgrade the firmware.



The camera will reboot once the update is complete. Click **Find Devices**, the new firmware version should be displayed in the last part of the Machine Name.

# EverFocus Electronics Corp.

## EverFocus Taiwan:

12F, No.79, Sec. 1, Shin-Tai Wu Road,  
Hsi-Chih, Taipei, Taiwan  
TEL: +886 2 2698 2334  
FAX: +886 2 2698 2380  
www.everfocus.com.tw  
[marketing@everfocus.com.tw](mailto:marketing@everfocus.com.tw)

## EverFocus China - Beijing:

Room 609, Technology Trade Building,  
Shangdi Information Industry Base,  
Haidian District, Beijing 100085, China  
TEL: +86 10 6297 3336~39  
FAX: +86 10 6297 1423  
www.everfocus.com.cn  
[marketing@everfocus.com.cn](mailto:marketing@everfocus.com.cn)

## EverFocus USA - California:

1801 Highland Avenue, Unit A, Duarte, CA 91010, USA  
TEL: +1 626 844 8888  
FAX: +1 626 844 8838  
www.everfocus.com  
[sales@everfocus.com](mailto:sales@everfocus.com)

## EverFocus Japan:

5F, Kinshicho City Building, 2-13-4  
Koto-Bashi, Sumida-Ku, Tokyo, 130-0022, Japan  
TEL: +81 3 5625 8188  
FAX: +81 3 5625 8189  
www.everfocus.co.jp  
[info@everfocus.co.jp](mailto:info@everfocus.co.jp)

## EverFocus India:

Suite 803, Housefin Bhavan, C-21,  
Bandra Kurla Complex, Bandra (East),  
Mumbai 400051, India  
TEL: +91 22 6128 8700  
FAX: +91 22 6128 8705  
www.everfocus.in  
[sales@everfocus.in](mailto:sales@everfocus.in)

## EverFocus Europe - Germany:

Albert-Einstein-Strasse 1, D-46446  
Emmerich, Germany  
TEL: +49 2822 93940  
FAX: +49 2822 939495  
www.everfocus.de  
[info@everfocus.de](mailto:info@everfocus.de)

## EverFocus China - Shenzhen:

4F, No. 2, D4 Building, Wan Yelong  
Industrial Park, Tangtou Road, Shiyan,  
Baoan, Shenzhen, Guangdong 518101, China  
TEL: +86 755 2765 1313  
FAX: +86 755 2765 0337  
www.everfocus.com.cn  
[marketing@everfocus.com.cn](mailto:marketing@everfocus.com.cn)

## EverFocus USA - New York:

415 Oser Avenue, Unit S, Hauppauge, NY 11788, USA  
TEL: +1 631 436 5070  
FAX: +1 631 436 5027  
www.everfocus.com  
[sales@everfocus.com](mailto:sales@everfocus.com)

## EverFocus Europe - UK:

Unit 12, Spitfire Business Park,  
Hawker Road, Croydon Surrey, CR0 4WD, UK  
TEL: +44 20 8649 9757 / +44 845 430 9999  
FAX: +44 20 8649 9907  
www.everfocusuk.co.uk  
[salesuk@everfocus.com](mailto:salesuk@everfocus.com)



Your EverFocus product is designed and manufactured with high quality materials and components which can be recycled and reused. This symbol means that electrical and electronic equipment, at their end-of-life, should be disposed of separately from your household waste. Please, dispose of this equipment at your local community waste collection/recycling centre. In the European Union there are separate collection systems for used electrical and electronic product. Please, help us to conserve the environment we live in!

Ihr EverFocus Produkt wurde entwickelt und hergestellt mit qualitativ hochwertigen Materialien und Komponenten, die recycelt und wieder verwendet werden können. Dieses Symbol bedeutet, dass elektrische und elektronische Geräte am Ende ihrer Nutzungsdauer vom Hausmüll getrennt entsorgt werden sollen. Bitte entsorgen Sie dieses Gerät bei Ihrer örtlichen kommunalen Sammelstelle oder im Recycling Centre. Helfen Sie uns bitte, die Umwelt zu erhalten, in der wir leben!



P/N: 4605PZ3260B010A -Ver.C