

OMNI  
EUROPEAN TOUCH



EUROPEAN TOUCH™

## EUROPEAN TOUCH - LIMITED CONDITIONAL\* WARRANTY

European Touch Holdings, Inc. ("European Touch") conditionally warrants your pedicure spa (the "Pedicure Spa") in accordance with the terms and conditions set forth below for a period of one (1) year commencing on the original date of shipment of the Pedicure Spa to you. The warranty only applies to the Pedicure Spa's original end-user owner or customer (the "Customer"). **This Conditional Warranty is non-transferable and replaces any warranties previously published by European Touch.**

If examination of the Pedicure Spa by European Touch during the applicable warranty period shows it to have a defect in material or workmanship, European Touch will, at its option, repair or replace the defective component or part thereof. Further, European Touch may, at its discretion, replace a defective component or part with a refurbished component or part, or may replace the Pedicure Spa with a refurbished pedicure spa. If European Touch elects to replace the Pedicure Spa, the replacement pedicure spa must be comparable in style and size to the original Pedicure Spa. The Customer shall bear all charges incurred for the shipment to it of replacement components or parts, or a replacement pedicure spa, and the cost of all labor incurred in repairing defects in the Pedicure Spa or repairing or replacing any of its defective components or parts.

The foregoing limited warranty does not apply:

- To the Pedicure Spa, or any components or parts thereof, if subjected to misuse or neglect or if accidentally or intentionally damaged.
- To the Pedicure Spa, or any components or part, if altered or modified in any way.
- To any expenses incurred by the Customer or any third party, including labor or material, during investigation, removal or reinstallation of the Pedicure Spa or any defective components or parts.
- To any damage to or impairment of the Pedicure Spa, or any components or parts thereof, caused by any casualty, including without limitation, accident, fire, wind, floods, acts of nature or attempted theft.
- To any workmanship of a fabricator (other than European Touch) or installer of the Pedicure Spa.
- If damage to pump parts and/or motor parts is due to obstructed plumbing.
- If the Pedicure Spa is removed from its place of initial installation.
- To staining, fading, or discoloration of any portion of the Pedicure Spa caused by water additives or improper water treatment.
- To staining, fading or discoloration of the Pedicure Spa's upholstered seat, armrests or footrests.
- To malfunctions or damage caused by improper installation of the Pedicure Spa, including, but not limited to, failure to meet local, state, or local plumbing, electrical and building codes.
- To damage resulting from a person standing in the Pedicure Spa's basin or other similar stress to the basin.
- To freight damage.
- To damage incurred to the Pedicure Spa while in possession of any party other than European Touch.

This forgoing conditional limited warranty is also conditional upon:

- The Pedicure Spa being installed by a licensed professional in accordance with European Touch's installation instructions.
- The proper use of cleaning and sanitizing solutions in accordance with the manufacturer's instructions, or state board. It must be noted that repeated use of concentrated sodium hypochlorite solutions (chlorine bleach), concentrated ether solutions, or acetone will damage

chrome and plumbing components and will void the limited warranty on those parts. European Touch recommends that you thoroughly read labels and use sanitizing products void of these chemicals.

- Use of this pedicure spa for functions it was not created for, including, but not limited to, ionic detox or any process that operates by reverse electroplating; this use will destroy plated parts and void the warranty.
- Shipment, if requested, to European Touch of Pedicure Spa parts or components thought to be defective. Parts or components may only be returned if authorized in advance by European Touch. All returns must be freight prepaid.
- Determination by European Touch, in its reasonable discretion, that there exists a defect in material or workmanship.

Repair or replacement of any part or component under this Limited Warranty, or furnishing a replacement pedicure spa, shall not extend the duration of the warranty with respect to such repaired or replaced part beyond the stated warranty period. When a part or component is replaced, it will be under warranty for 90 days, or for the remaining life of the original warranty, whichever period is greater.

Customer agrees by using the Pedicure Spa that

- **THE OBLIGATION OF EUROPEAN TOUCH SHALL NOT EXTEND TO INDIRECT OR CONSEQUENTIAL DAMAGES OR INJURY WHICH MAY RESULT FROM SUCH USE**
- the obligations of European Touch are limited to those set forth herein
- this warranty is limited to the original owner/end-user and is non-transferable
- European Touch shall not be liable for any other obligations or liabilities, including, but not limited to: obligations or liabilities arising out of breach of contract or warranty, negligence, or other tort or any theory of strict liability with respect to the Pedicure Spa or parts or components thereof or any acts or omissions of European Touch
- Any assistance European Touch provides to the Customer outside of terms, limitations, or exclusions of this limited warranty will not constitute a waiver of any of the foregoing terms, limitations, or exclusions, nor will such assistance extend or revive the warranty.

**THIS LIMITED WARRANTY IS IN LIEU OF ALL OTHER WARRANTIES, EITHER EXPRESSED OR IMPLIED, AND ALL SUCH OTHER WARRANTIES, INCLUDING WITHOUT LIMITATION, IMPLIED WARRANTIES OF MERCHANTABILITY OR FITNESS FOR A PARTICULAR PURPOSE, ARE HEREBY DISCLAIMED AND EXCLUDED FROM THIS LIMITED WARRANTY. NO DEALER OR OTHER PERSON HAS ANY AUTHORITY TO BIND EUROPEAN TOUCH TO CHANGES OR ADDITIONS TO THIS WARRANTY OR ITS PRODUCTS. ACCORDINGLY, EUROPEAN TOUCH IS NOT RESPONSIBLE FOR ANY SUCH OUTSIDE WARRANTIES OR REPRESENTATIONS.**

**IN NO EVENT SHALL EUROPEAN TOUCH BE LIABLE IN ANY WAY FOR ANY CONSEQUENTIAL, SPECIAL, OR INCIDENTAL DAMAGES OF ANY NATURE WHATSOEVER, OR FOR ANY AMOUNTS IN EXCESS OF THE SELLING PRICE OF THE PEDICURE SPA OR ANY COMPONENTS OR PARTS THEREOF FOUND TO BE DEFECTIVE. THIS LIMITED WARRANTY GIVES THE CUSTOMER SPECIFIC LEGAL RIGHTS. THE CUSTOMER MAY ALSO HAVE OTHER RIGHTS WHICH MAY VARY BY EACH JURISDICTION.**

Should your Pedicure Spa require service due to a defect or malfunction, please contact:

European Touch – Technical Support  
800.626.6912 | 414.357.7016 | f: 414.357.6360  
email: [service@europeantouch.com](mailto:service@europeantouch.com)  
website: [www.europeantouch.com](http://www.europeantouch.com)



EUROPEAN TOUCH™  
**OWNERS MANUAL For**  
**Omni Spa**

**IMPORTANT INFORMATION**

Serial Number: \_\_\_\_\_

Work Order Number: \_\_\_\_\_

Installed by: \_\_\_\_\_

Installation Date: \_\_\_\_\_

The serial number and work order number are located above  
the water connections at the rear of the unit.



# EUROPEAN TOUCH™

## TABLE OF CONTENTS

<b>EUROPEAN TOUCH - LIMITED CONDITIONAL* WARRANTY .....</b>	<b>2</b>
<b>IMPORTANT INFORMATION .....</b>	<b>4</b>
<b>TABLE OF CONTENTS .....</b>	<b>5</b>
<b>INTRODUCTION .....</b>	<b>6</b>
<b>IMPORTANT SAFETY INSTRUCTIONS .....</b>	<b>6</b>
<b>DANGER .....</b>	<b>7</b>
<b>WARNINGS .....</b>	<b>7</b>
<b>IMPORTANT REQUIREMENTS.....</b>	<b>8</b>
<b>HEALTH RISK WARNING .....</b>	<b>8</b>
<b>PEDICURE SPA SPECIFICATIONS.....</b>	<b>9</b>
<b>COMPONENT REFERENCE .....</b>	<b>10</b>
<b>INSTALLING THE CHAIR ON THE BASE .....</b>	<b>11</b>
<b>REMOVING AND REPLACING LOCKING CAP .....</b>	<b>12</b>
<b>PEDICURE PRODUCT GUIDELINES.....</b>	<b>12</b>
<b>OPERATING INSTRUCTIONS .....</b>	<b>13</b>
<b>GETTING STARTED .....</b>	<b>13</b>
<b>SHUTTING DOWN.....</b>	<b>13</b>
<b>USER MAINTENANCE .....</b>	<b>13</b>
<b>STAINS:.....</b>	<b>13</b>
<b>THINGS TO AVOID: .....</b>	<b>13</b>
<b>DAMAGE TO UNIT: .....</b>	<b>13</b>
<b>ROLLER / VIBRATION MESSAGE SYSTEM .....</b>	<b>14</b>
<b>PIPE-FREE SPA CLEANING AND DISINFECTING PROCEDURES .....</b>	<b>15</b>
<b>PEDICURE SPA CLEANING LOG SHEET .....</b>	<b>16</b>
<b>REPLACEMENT PARTS.....</b>	<b>17</b>
<b>HISTORY AND NOTES.....</b>	<b>19</b>



EUROPEAN TOUCH™

## INTRODUCTION

Thank you for selecting EUROPEAN TOUCH, the leading designer, manufacturer, and marketer of pedicure spas in North America. The Omni Spa (herein referred to as pedicure spa) is an innovative pedicure spa that has been designed to serve you dependably for many years. Please take time to thoroughly read this entire manual before installation and use. If you have any problems or have questions regarding your pedicure spa, please contact EUROPEAN TOUCH'S Technical Support Department at **1-800-626-6912**, Monday through Friday 8 AM to 5:00 PM CST. After hours calls are recorded and attended to the next business day.

## IMPORTANT SAFETY INSTRUCTIONS

When using an electrical appliance, basic precautions should always be followed, including the following:

Read all instructions before using the Pedicure Spa.

**WARNING** – To reduce the risk of burns, fire, electric shock, or injury to persons:

1. Use the Pedicure Spa only for its intended use as described in this manual. Do not use attachments not recommended by the manufacturer.
2. Never operate the Pedicure Spa if it has a damaged cord or plug, if it is not working properly, if it has been dropped or damaged, or dropped into water.
3. Never drop or insert any object into any opening.
4. Do not use outdoors.
5. Do not operate where aerosol (spray) products are being used or where oxygen is being administered.

**Save These Instructions**



EUROPEAN TOUCH™

## DANGER

1. Never use pins or other metallic fasteners with this appliance.

## WARNINGS

1. WARNING: RISK OF ELECTRIC SHOCK; do not permit electric appliances (such as a hair dryer, lamp, telephone, radio, or television) within 1.5M (5 feet) of this hydromassage bathtub.
2. CAUTION: Test the ground fault circuit interrupter protecting this appliance periodically in accordance with the manufacturer's instructions.
3. Temperatures sufficiently high to cause burns may occur regardless of the control setting.
  - a. Do not use on...
    - Infants
    - Invalids
    - Sleeping or unconscious person
  - b. Do not use on...
    - Sensitive skin
    - Person with poor blood circulation

*Note: Check the skin in contact with the heated area of the appliance frequently to reduce the risk of blistering.*

4. Excessive water temperature is dangerous and should be checked before use. Maximum operating water temperature should not exceed 105° F (41° C) and the maximum supply water temperature should not exceed 120°F (49° C).
5. Always enter and exit the pedicure spa slowly and carefully.
6. Never bring or operate any electrical devices into or near the pedicure spa.
7. Do Not Crush – Avoid sharp folds.
8. Do not stand on or in appliance.
9. Use only while seated.
10. Connect this appliance to a properly grounded outlet only. See Grounding Instructions within the install manual.
11. Spa basin shall not be used by maintenance or cleaning crew as a slop sink.

**Note: Always verify maximum temperatures with your local & state codes.**



EUROPEAN TOUCH™

## IMPORTANT REQUIREMENTS

EUROPEAN TOUCH requires that you contact your local, licensed plumber and licensed electrician to install your new pedicure spa. Installation must be in compliance with your local and state building codes. Your pedicure spa cannot operate efficiently or safely unless it is provided with adequate electrical power, sufficient water pressure, proper water temperature, and required drainage capabilities. Contact your local building inspector for information and local code compliance procedures that need to be followed when having your pedicure spa installed. Subsequent inspections and approvals that may be required are the responsibility of the purchaser. **(See limited warranty regarding incidental or consequential exclusions – page 2).**

## HEALTH RISK WARNING

Individuals whose feet or legs are inflamed or have open wounds should not be allowed to use the pedicure spa at any time. Nail technicians should advise clients to consult their physician before using the pedicure spa if there is any sign of fungal infection, swelling, fracture, or persistent pain. In some cases diabetics may experience improved circulation in their feet, but should first consult their physician prior to receiving a pedicure.

*Your client's pedicure spa experience should be pleasant and comfortable.*

**If the client experiences any pain or discomfort discontinue the use of the pedicure spa immediately.**



## PEDICURE SPA SPECIFICATIONS

Hot and cold water supply lines required (hot and cold shut offs may be installed under pedicure spa base)

### SHIPPING INFORMATION

Spa ships in three separate boxes on one pallet. One box contains the spa base, one contains the chair, and one contains the chair arms.

**Weight:** 225 lbs. (102 kg) - includes spa, carton, pallet (estimated)

**Shipping Dimensions:** 55"L (140cm) x 36.5" W (93cm) x 58"H (147cm)

### SPA INFORMATION

**Overall dimension, seat upright and forward:**

50"L (110cm) x 30"W (76cm) x 53"H (135cm)

**Minimum area required for chair in rear position and fully reclined:**

72.5"L (184cm) x 49"W (125cm) x 53"H (135cm)

**Empty weight (complete):** 155lbs (70.5kg)

**Water Fill Line Capacity:** 5 U.S. gallons

**Whirlpool pump motor:** 1/6 HP, 110V, 60Hz

**Seat upholstery:** Polyurethane

**Power source:** 110V AC, 2.75 Amps, 60 Hz (GFCI Protected)

- ▶ **Caution: Pedicure spa must be installed by a licensed electrician and a licensed plumber, conforming to all local and national electrical codes**

**Construction:** Fiber Glass base

**Geni-Eye Pipeless:** No closed loop circulating pipes, fully drained, easy to clean and sanitize

**Electrical switches:** On/Off switch for optional power drain pump. A single hand-held, low voltage remote control for massage motors.

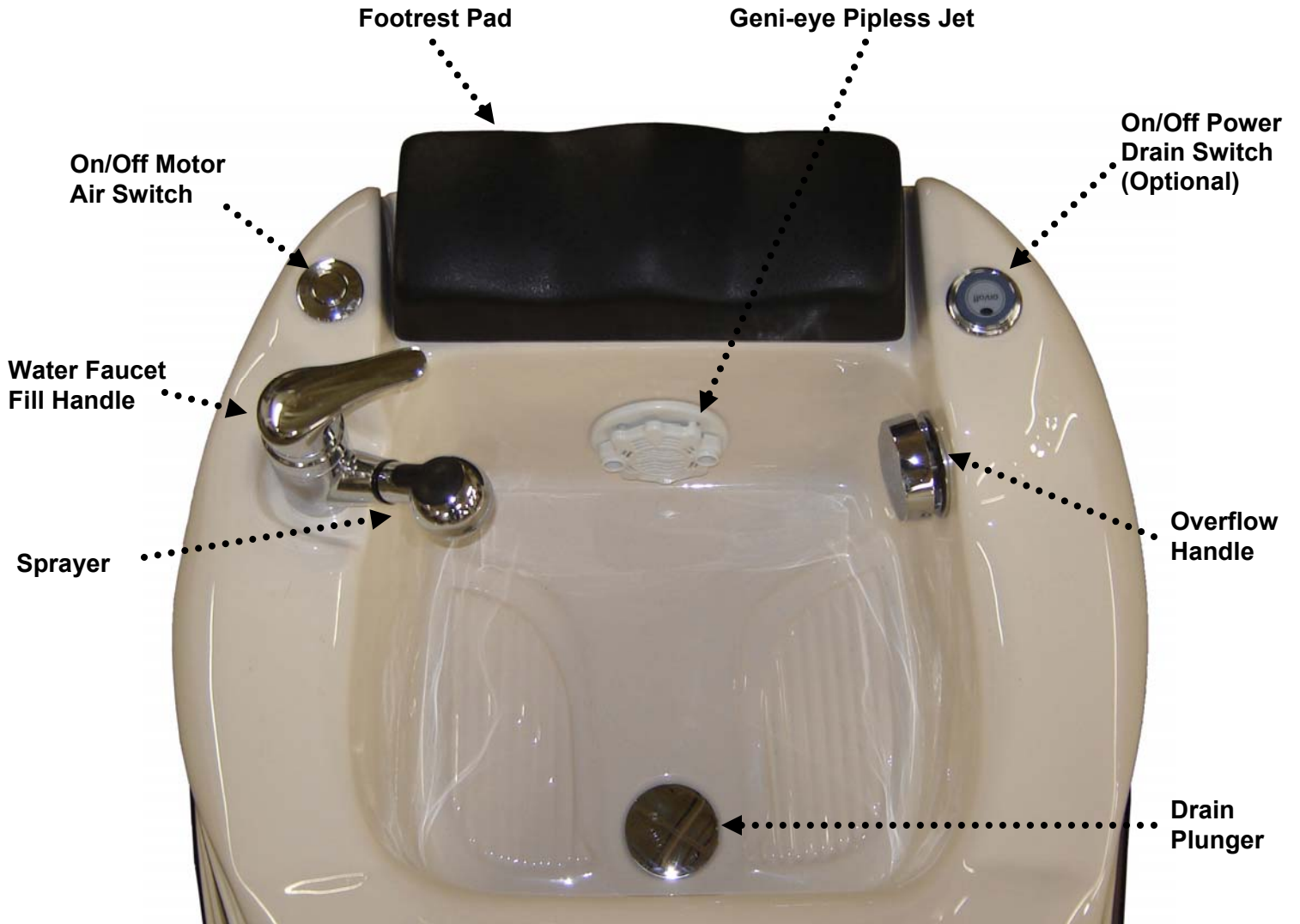
**Compliances:** Cushion is TB133 certified

**Limited warranty:** **One (1) year on parts from date of shipment. Labor is not included.**

---

*NOTE: Due to our policy of continuous improvements, all specifications are subject to change without notice.  
All dimensions and weights are approximate*

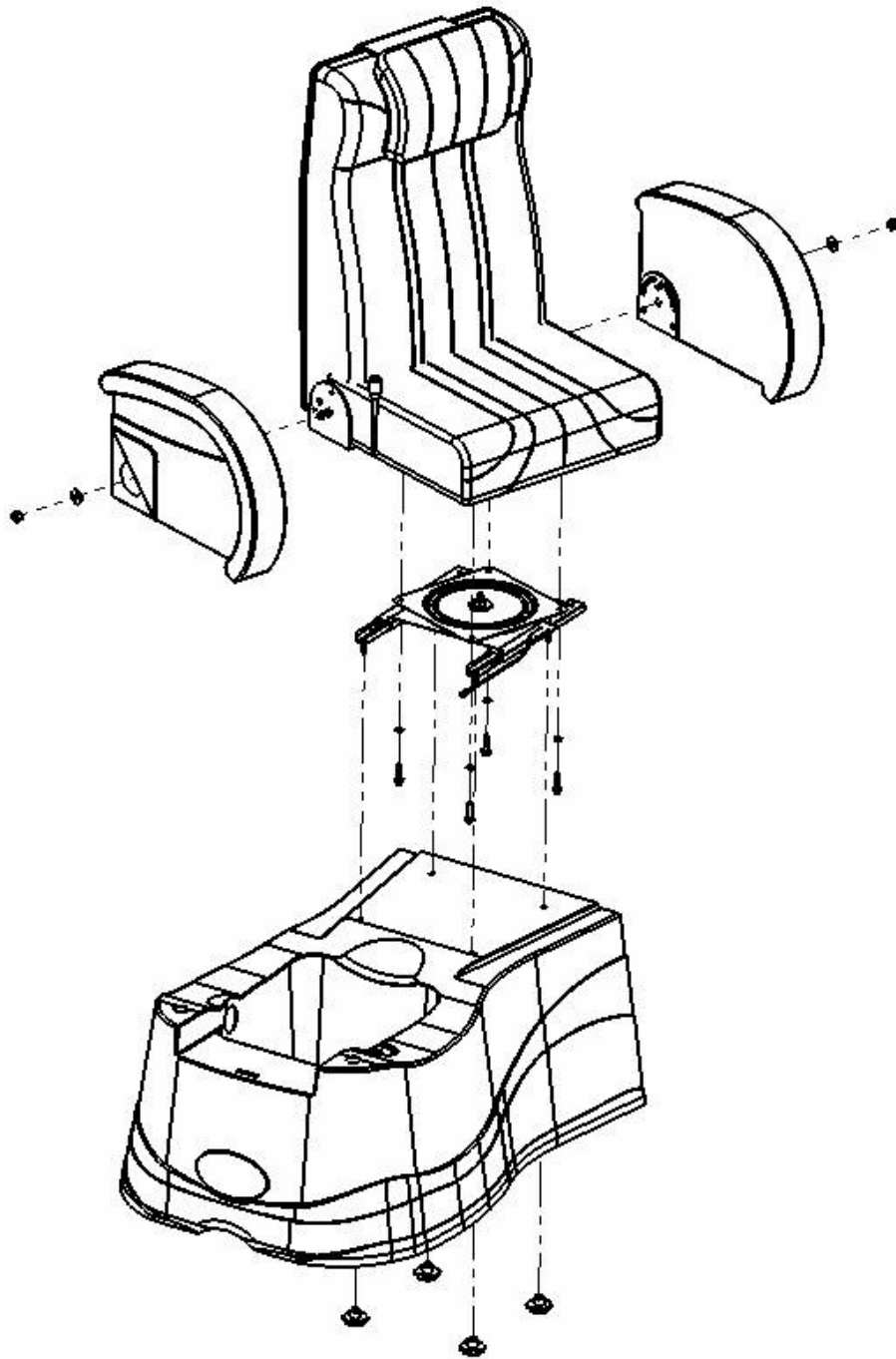
## COMPONENT REFERENCE



Note: Pressing with finger nails, rather than the pads of fingers, will damage the on/off switch and will not be covered under the warranty.

**DO NOT PLUG JET HOLES WITH ANY ITEMS, INCLUDING TOES.**

## INSTALLING THE CHAIR ON THE BASE



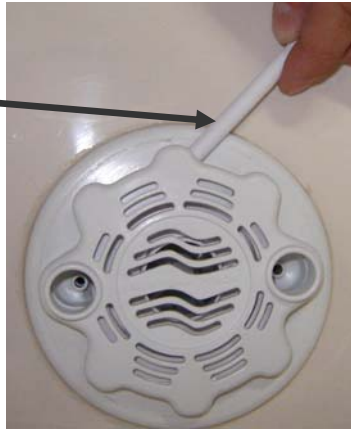
1. Attach the swivel to the bottom of the chair using the supplied cap screws and lock washers using the supplied hex wrench.
2. Attach the chair/swivel assembly to the base using the (4) star knobs. Two people are recommended to lift the chair into position.
3. Attach the armrests using the supplied nuts and lock washers using the supplied wrench.
4. Place the transformer on the wooden base and plug the chair into the barrel plug.
5. Plug the transformer into the air switch box already screwed to the base. Plug it only into the forward facing outlet. This outlet is always energized.

## REMOVING AND REPLACING LOCKING CAP

Check your state and local regulations for cleaning procedures. Links to your state boards can be found on our web site, at [www.europeantouch.com](http://www.europeantouch.com).

1. Place the cap into position and turn clockwise until the locking pin is at the top right corner of the motor mount.
2. To remove cap the use of a tool is required.
3. Insert tool shown in diagram (below) adjacent to locking pin.
4. Gently turn the cap counter-clockwise to remove cap.

**Cover Removal  
Tool**



**Geni-eye  
Pipeless Cover**

## PEDICURE PRODUCT GUIDELINES

Because there are so many different products on the market, it is difficult to list all of the pedicure products that are safe to use in our pedicure spas. However, the following guidelines can be used:

- It is your responsibility to understand and follow your state's regulations regarding product cleaning and disinfecting requirements.
- Do not use any products containing a foaming agent; this will cause excessive foam.
- It has been determined that products containing non-dissolving abrasives (such as sand and sea salts) will not harm the internal component structure of your pedicure spa as long as the entire EUROPEAN TOUCH cleaning requirements are followed without deviation.
- Oil based products may be used in your pedicure spa as long as the cleaning requirements are met.
- Please use pedicure products and cleaning solutions in accordance with each manufacturer's directions.

**EUROPEAN TOUCH pedicure spas will give you many years of service as long as proper precautions, precise cleaning, and operating instructions are followed. It is the responsibility of the pedicure spa user to properly clean and maintain the pedicure spa.**

# OPERATING INSTRUCTIONS

## GETTING STARTED

1. Check that the waste & overflow control valve is closed.
2. Open the faucet handle and fill tub with water until the water level is 1" above jets.
3. Press on/off air button switch to start the jets.
4. Adjust the air control to desired flow.

The jets system must not be turned on when the system is dry, as damage may occur. Such damage is not covered by warranty.

While the jet action is in operation, do not use an excessive amount of soap, bath oils or detergent, as high action turbulence often causes foaming.

**DO NOT PLUG JET HOLES WITH ANY ITEM, INCLUDING TOES.**

## SHUTTING DOWN

1. Push in the on/off air button switch to turn jets off.
2. Open waste & overflow control and check that the drain valve is open.
3. Press the on/off PDP button (an option to purchase to aid draining.)
4. Clean tub (see following page)

## USER MAINTENANCE

**STAINS:** For stubborn stains start with a liquid detergent, if this does not work, try a mild powder detergent such as Spic 'n Span, which also works well for removing heavy soap film. Cleaning pads made of nylon; saran or polyethylene containing no abrasives may be used. **DO NOT USE ABRASIVE SCOURING POWDERS OR METAL SCOURING PADS** as they can permanently damage the finish. A mild abrasive action can be accomplished with an automotive type of rubbing compound. Should your stain removal result in a dull area; the shine can be restored with an automotive polish and wax, such as *Turtle Wax*.

**THINGS TO AVOID:** Sand and grit. Dropped tools. Acetone on any acrylic surface. Undiluted bleach.

**DAMAGE TO UNIT:** Should your unit suffer accidental damage or require servicing, a qualified repair person may perform the needed repair. Consult your spa representative.

# ROLLER / VIBRATION MASSAGE SYSTEM

## Turning On\Off

1. Press **POWER** button to turn ON.
2. Repeat Step #1 to turn OFF.

## Initiate roller massage in seat back

- 1) Press the membrane switch under “ROLLER”.
- 2) Massage will automatically turn off in 20 minutes.

## Initiate seat vibration massage.

1. Select vibration zone Lower Back, Upper Back or both.
2. Choose appropriate strength, speed vibration, along with function  
A = Wave  
B = Pulse  
C = Continuous

## Selecting Massage Mode Cycle Time

1. Massage system is preprogrammed for 20 minutes.



# PIPE-FREE SPA CLEANING AND DISINFECTING PROCEDURES

## **Always check with your state board for required cleaning and disinfecting procedures.**

It is extremely important to clean and disinfect your pedicure spa after each pedicure, after the last pedicure of the day, and once a week for overnight cleaning. Regular cleaning will help keep your pedicure spa in good working condition. Proper and continuous cleaning will kill harmful bacteria and germs that can cause infection. To clean your pedicure spa equipped with Pipeless technology, follow these easy steps.

### **Procedures for Cleaning and Disinfecting Pipe-Free Pedicure spas**

After use upon each patron, each Pipe-Free Pedicure spa shall be cleaned and disinfected in the following sequential manner:

- (1) All water shall be drained from the spa basin.
- (2) Remove Pipe-Free Cover by inserting removal tool and turning counter-clockwise.
- (3) Using handheld sprayer, rinse side walls of basin, pipe free jet and pipe free cover of all residue and debris.
- (4) Scrub all visible residue from the Pipe-Free Cover, inside walls of the basin, and/or other components and the areas behind or under each with a clean brush and liquid soap (labeled as such on soap product) and water. Rinse with clean water.
- (5) Reinsert the properly cleaned Pipe-Free Cover over jet, and dry basin completely.

#### **Disinfecting with water filled basin directions:**

- (1) Refill the basin with clean water and circulate the correct amount (read the label for mixing instructions) of the EPA-registered hospital-liquid disinfectant, which the label claims is a bactericide, fungicide, and virucide, through the basin for at least 10 minutes.
- (2) Drain, rinse and wipe the basin dry with a clean paper towel.
- (3) Record this procedure in the pedicure-cleaning log. The log shall contain the date and time of each cleaning, initials of the person who completed the procedure, and shall indicate that the cleaning was done after a client.

#### **Disinfecting with Ready to Use (RTU) products and surface saturation directions:**

- (1) Spray to saturate inside of basin, all basin walls and area inside Pipe-Free Jet area with EPA registered disinfectant and allow sitting for at least 10 minutes.
- (2) Submerge Pipe-Free Cover in container of EPA registered disinfectant for at least 10 minutes OR spray Pipe-Free Cover to saturate with EPA registered disinfectant and lay inside basin for a minimum of 10 minutes.
- (3) Rinse and wipe the basin dry with a clean paper towel. Follow step (4) above.

At the end of every day and after performing the procedures provided in subsection (b) (1 through 6) and after the last client, each pipe-free pedicure spa shall be cleaned and disinfected in the following sequential manner:

- (1) Fill the basin with warm water and detergent (labeled as such on detergent product) and circulate the detergent through the spa system for at least 10 minutes.
- (2) Drain the detergent solution and rinse the basin.
- (3) Refill the basin with clean water and circulate the correct amount (read the label for mixing instructions) of the EPA-registered hospital-liquid disinfectant which the label claims is a bactericide, fungicide, and virucide, through the basin for at least 10 minutes.
- (4) Drain, rinse and wipe the basin dry with a clean paper towel.
- (5) Allow the basin to dry completely.
- (6) Record this procedure in the pedicure-cleaning log. The log shall contain the date and time of each cleaning, initials of the person who completed the procedure, and shall indicate that the cleaning was done at the end of the day.

At least once each week, after completing the procedures provided in subsection (c) (1 through 3), and the disinfectant solution in each pipe-free pedicure spa shall not be drained and the following sequential procedures shall be followed:

- (1) The unit shall be turned off and the disinfecting solution shall be left in the unit undisturbed for 6 to 10 hours.
- (2) After the disinfectant solution has been sitting between 6 to 10 hours, rinse and wipe the basin dry with a clean paper towel.
- (3) Record this procedure in the pedicure-cleaning log. The log shall contain the date and time of each cleaning, initials of the person who completed the procedure, and shall indicate that the cleaning was done weekly.

The pedicure-cleaning log shall be made available upon request by either a patron or a state board representative.

### **A violation of this section may result in an administrative fine and/or disciplinary action.**

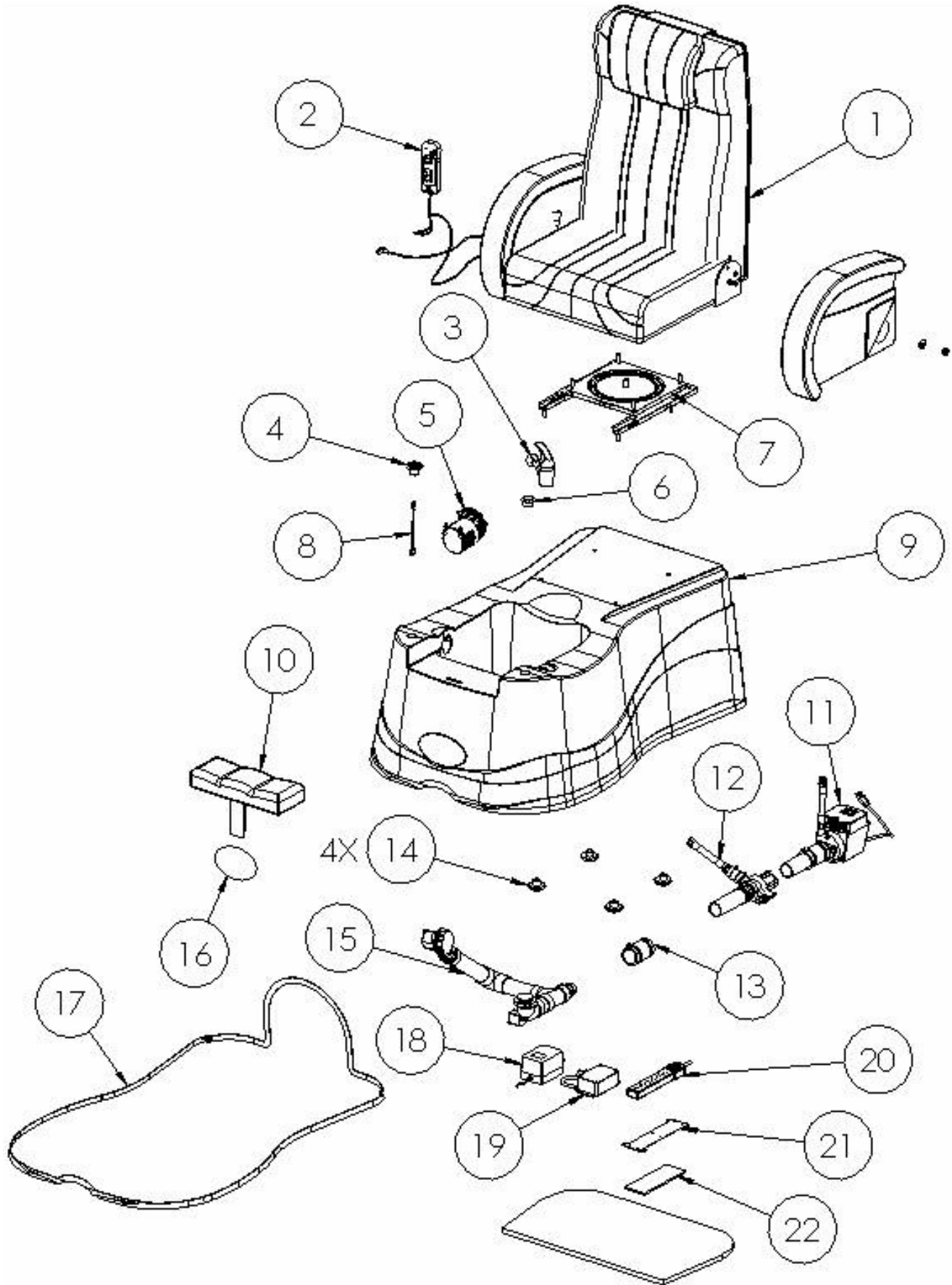
**CAUTION:** Cleaning products that contain abrasives can damage the pedicure spa. Use only non-abrasive products to clean your spa.





# REPLACEMENT PARTS

## SPA ASSEMBLY



ITEM NO.	PART NUMBER	DESCRIPTION	QTY.
1	1016010X(0-1,9)	CHAIR ROLLER BLACK	1
2	10040002	REMOTE WAND	1
3	10130000	FAUCET SPRAYER ASSEMBLY	1
4	10040000	SWITCH MEMBRANE DRAIN	1
5	39150007	ASM MOTOR EUROPEAN TOUCH SYSTEM	1
6	10130001	BUTTON AIR VALVE	1
7	10020000	SWIVEL	1
8	14040151	CABLE MODULAR BUTTON	1
9	101600XX(00-02,20-22)	OMNI SPA 110V/220V BASE WHITE/BLACK/BONE	1
10	10000050	FOOTREST OMNI	1
11	10150001	SUBASM HIGH CAPACITY POWER DRAIN PUMP (OPTIONAL)	1
12	10150000	SUBASM POWER DRAIN PUMP (OPTIONAL)	1
13	30010218	COUPLER 1.50" TO 1.50"	1
14	10010004	KNOB ATTACH CHAIR TO BASE	4
15	10010000	DRAIN ASSEMBLY	1
16	10030000	DECAL OMNI SPA LOGO	1
17	10010002	TRIM BLACK RUBBER	1
18	10040001	TRANSFORMER CHAIR -- CLASS 2	1
19	14040422	CONTROL BOX DRAIN PUMP PIPEFREE SCS	1
20	00040100	POWER STRIP	1
21	14020002	BRACKET POWER STRIP	1
22	14050001	PLYWOOD 8.5 X 3 X .25	1

# HISTORY AND NOTES



# EUROPEAN TOUCH™

**EUROPEAN TOUCH  
8301 W. Parkland Court  
Milwaukee, WI 53223**

**Phone Number: 1-414-357-7016  
Toll Free: 1-800-626-6912  
Fax: 1-414-357-6360**

**Web Site: [www.europeantouch.com](http://www.europeantouch.com)  
Email: [info@europeantouch.com](mailto:info@europeantouch.com)**