

Quick Installation Guide of Wireless 802.11g Broadband Router

~ Version 1.0 ~

※ To avoid users without access right through your WLAN Broadband Router, suggest that use security mechanism like WEP, WPA or set ID/password for web configuration login IP address 192.168.1.254.

Preparation

- 1 At least one PC with IEEE802.11b/g WLAN client installed.
- 2 One straight-through Category 5 Ethernet cable, used to link WAN interface to xDSL or CM for Internet connection.
- 3 WLAN Broadband Router.

Check package contents:

- ✓ WLAN Broadband Router
- ✓ DC 7.5V Power Adapter
- ✓ User's manual CD-ROM

Collect Installation Information:

WAN configuration (Contact your ISP or network administrator for these information)

DHCP Client

Static IP

IP Address	<input type="text"/> . <input type="text"/> . <input type="text"/> . <input type="text"/>
Subnet Mask	<input type="text"/> . <input type="text"/> . <input type="text"/> . <input type="text"/>
Default Gateway	<input type="text"/> . <input type="text"/> . <input type="text"/> . <input type="text"/>
DNS Address	<input type="text"/> . <input type="text"/> . <input type="text"/> . <input type="text"/>

PPPoE

User Name	<input type="text"/>
Password	<input type="text"/>

PPTP

IP Address	<input type="text"/> . <input type="text"/> . <input type="text"/> . <input type="text"/>
Subnet Mask	<input type="text"/> . <input type="text"/> . <input type="text"/> . <input type="text"/>
Server IP Address	<input type="text"/> . <input type="text"/> . <input type="text"/> . <input type="text"/>
User Name	<input type="text"/>
Password	<input type="text"/>

Quick Installation Guide of Wireless 802.11g Broadband Router

~ Version 1.0 ~

LAN configuration

IP Address	192.168.1.254
Subnet Mask	255.255.255.0

WLAN configuration

SSID	MyWLAN
Mode	2.4Ghz(B+G)
Channel Number	11

Parts and Functions of WLAN Broadband Router:

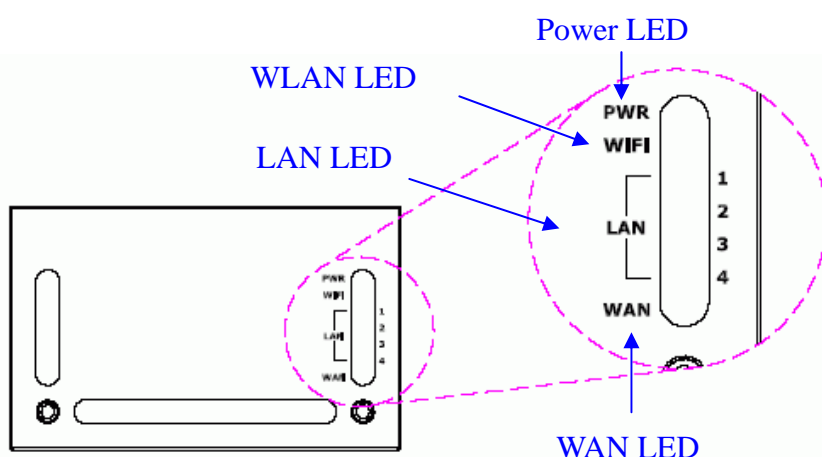


Figure 1 – WLAN Broadband Router Upper Panel

LED Indicator	State	Description
1. Power LED	On	The WLAN Broadband Router is powered on.
	Off	The WLAN Broadband Router is powered off.
2. WLAN LED	Flashing	Data is transmitting or receiving on the antenna.
	Off	No data is transmitting or receiving on the antenna.
3. LAN LED ACT	Flashing	Data is transmitting or receiving on the LAN interface.
	On	Port linked.
	Off	No link.

Quick Installation Guide of Wireless 802.11g Broadband Router

~ Version 1.0 ~

4. WAN LED

ACT

Flashing	Data is transmitting or receiving on the WAN interface
On	Port linked.
Off	No link.

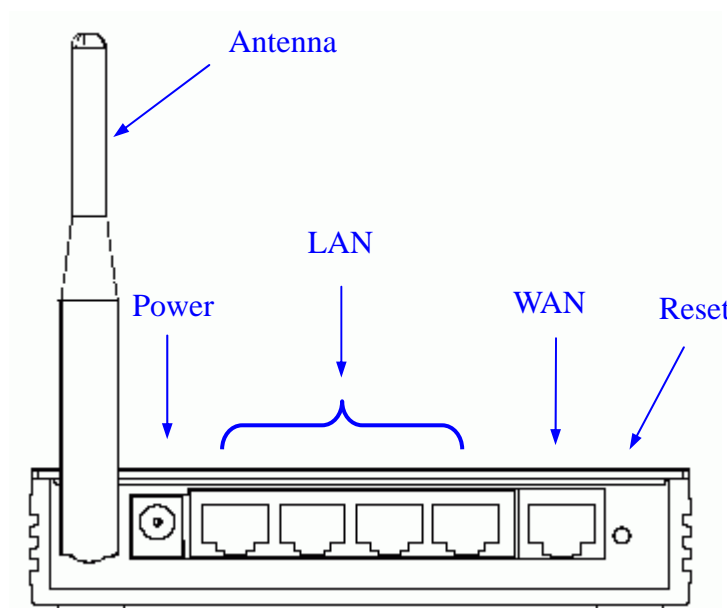


Figure 2 – WLAN Broadband Router Rear Pane

Interfaces	Description
1. Antenna	The Wireless LAN Antenna.
2. Power	The power jack allows an external DC +7.5 V power supply connection. The external AC to DC adaptor provide adaptive power requirement to the WLAN Broadband Router.
3. LAN	The RJ-45 sockets allow LAN connection through Category 5 cables. Support auto-sensing on 10/100M speed and half/ full duplex; comply with IEEE 802.3/ 802.3u respectively.
4. WAN	The RJ-45 socket allows WAN connection through a Category 5 cable. Support auto-sensing on 10/100M speed and half/ full duplex; comply with IEEE 802.3/ 802.3u respectively.
5. Reset	Push continually the reset button 5 ~ 10 seconds to reset the configuration parameters to factory defaults.

Quick Installation Guide of Wireless 802.11g Broadband Router

~ Version 1.0 ~

Installation

Step One – Power On WLAN Broadband Router

Connect DC 7.5V Power Adapter to WLAN Broadband Router and the wall power socket.

Notice: It will take about 55 seconds to complete the boot up sequence after powered on the WLAN Broadband Router; Power LED will be active, and after that the WLAN Activity LED will be flashing to show the WLAN interface is enabled and working now.

Step Two – Configure WLAN Broadband Router

1. Connect your PC to LAN port for configuration setting

WLAN Broadband Router is delivered with the following factory default parameters on the Ethernet LAN interfaces.

- Default IP Address: **192.168.1.254**
- Default IP subnet mask: **255.255.255.0**
- WEB login User Name: *<empty>*
- WEB login Password: *<empty>*
- Configure your PC with IP address between 192.168.1.1 to 192.168.1.253 and subnet mask to be 255.255.255.0, then open an Internet browser (i.e. Microsoft IE6.1 SP1 or above) to connect WLAN Broadband Router by entering <http://192.168.1.254> to URL field.

The screenshot displays the web interface of a WLAN Broadband Router. The page title is "Broadband Router Status". Below the title, a message states: "This page shows the current status and some basic settings of the device." The interface is organized into several sections, each with a green header bar:

- System**
 - Uptime: 0day:0h:15m:26s
 - Firmware Version: v1.2.0
- Wireless Configuration**
 - Mode: AP
 - Band: 2.4 GHz (G)
 - SSID: MyWLAN
 - Channel Number: 11
 - Encryption: Disabled
 - BSSID: 00:02:72:00:81:86
 - Associated Clients: 1
- TCP/IP Configuration**
 - Attain IP Protocol: Fixed IP
 - IP Address: 192.168.1.254
 - Subnet Mask: 255.255.255.0
 - Default Gateway: 192.168.1.254
 - DHCP Server: Enabled
 - MAC Address: 00:02:72:00:81:86
- WAN Configuration**
 - Attain IP Protocol: DHCP
 - IP Address: 192.168.0.136
 - Subnet Mask: 255.255.255.0
 - Default Gateway: 192.168.0.10
 - MAC Address: 00:02:72:00:81:87

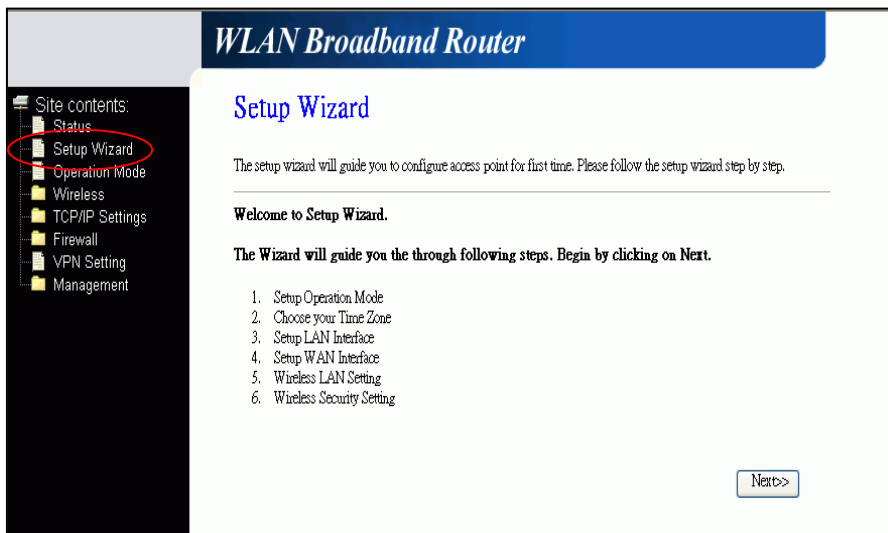
A left-hand navigation menu is visible, listing options such as Site contents, Status, Setup Wizard, Operation Mode, Wireless, TCP/IP Settings, Firewall, VPN Setting, and Management.

Quick Installation Guide of Wireless 802.11g Broadband Router

~ Version 1.0 ~

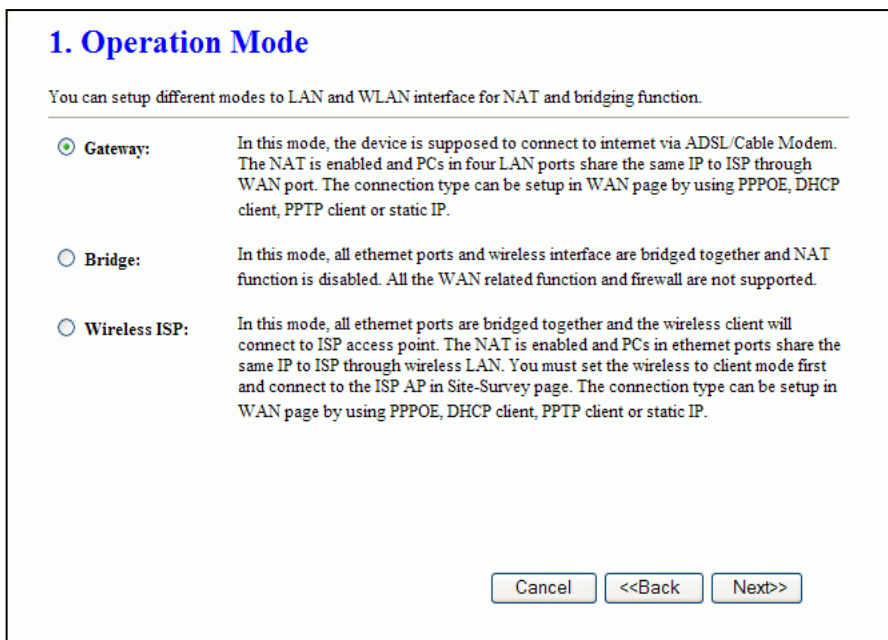
The following example is to configure router as “Gateway” mode that use factory default value. You may change those values if you think that is necessary.

2. Click “Setup Wizard” in submenu of Site contents



- Click “Next>>” button to go next.

3. Configure Operation Mode



- Click “Gateway”.
- Click “Next>>” button to go next.

Quick Installation Guide of Wireless 802.11g Broadband Router

~ Version 1.0 ~

4. Configure Time Zone Setting configuration

2. Time Zone Setting

You can maintain the system time by synchronizing with a public time server over the Internet.

Enable NTP client update

Time Zone Select : (GMT+08:00)Taipei

NTP server : 192.5.41.41 - North America

Cancel <<Back Next>>

- Click “Next>>” button to go next.

5. Configure LAN Interface Setup

3. LAN Interface Setup

This page is used to configure the parameters for local area network which connects to the LAN port of your Access Point. Here you may change the setting for IP address, subnet mask, DHCP, etc..

IP Address: 192.168.1.254

Subnet Mask: 255.255.255.0

Cancel <<Back Next>>

- IP Address:
192.168.1.254.
- Subnet Mask:
255.255.255.0.
- Click “Next>>” button to go next.

6. WAN Interface Setup

4. WAN Interface Setup

This page is used to configure the parameters for Internet network which connects to the WAN port of your Access Point. Here you may change the access method to static IP, DHCP, PPPoE or PPTP by click the item value of WAN Access type.

WAN Access Type: DHCP Client

Cancel <<Back Next>>

- WAN Access Type: Select WAN connection of ISP provides.
- ◇ WAN Options:
Static IP, PPPoE, PPTP
- Click “Next>>” button to go next.

Quick Installation Guide of Wireless 802.11g Broadband Router

~ Version 1.0 ~

7. Wireless Basic Settings

5. Wireless Basic Settings

This page is used to configure the parameters for wireless LAN clients which may connect to your Access Point.

Band: 2.4 GHz (G) ▼

Mode: AP ▼

Network Type: Infrastructure ▼

SSID: MyWLAN

Channel Number: 11 ▼

Enable Mac Clone (Single Ethernet Client)

Cancel <<Back Next>>

- Band: 2.4GHz(G)
- Mode: AP
- Network Type: disabled
- SSID: MyWLAN
- Channel: 11
- Enable Mac Clone: disabled
- Click “Next>>” button to go next.

8. Wireless Security Setup

6. Wireless Security Setup

This page allows you setup the wireless security. Turn on WEP or WPA by using Encryption Keys could prevent any unauthorized access to your wireless network.

Encryption: None ▼

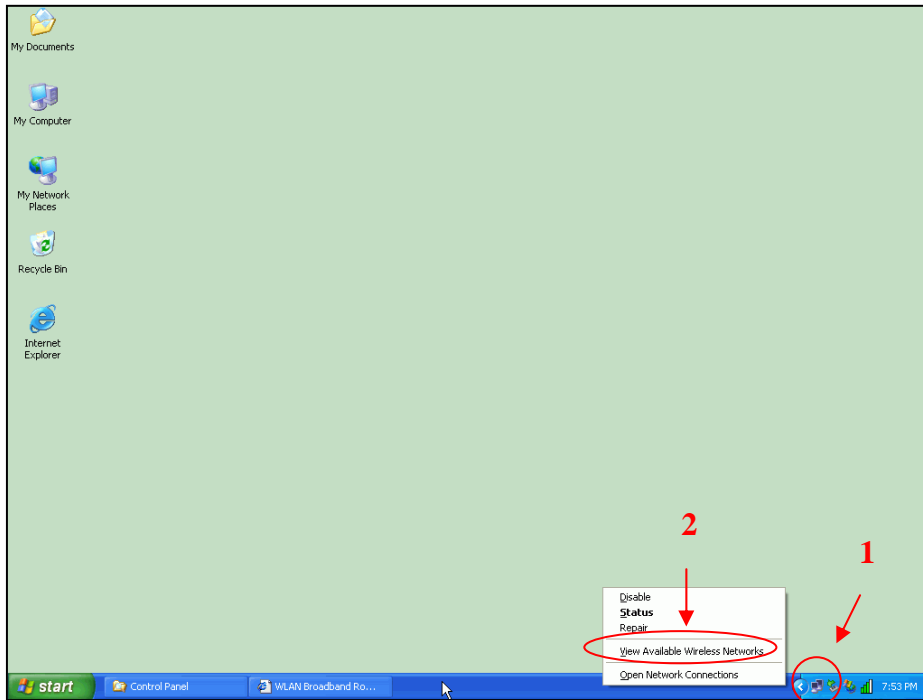
Cancel <<Back Finished

- Encryption: None
- ◇ Options:
 - WEP, WPA (TKIP),
 - WPA2 (AES), WPA2
 - Mixed
- Click “Finished” button to close setup session.

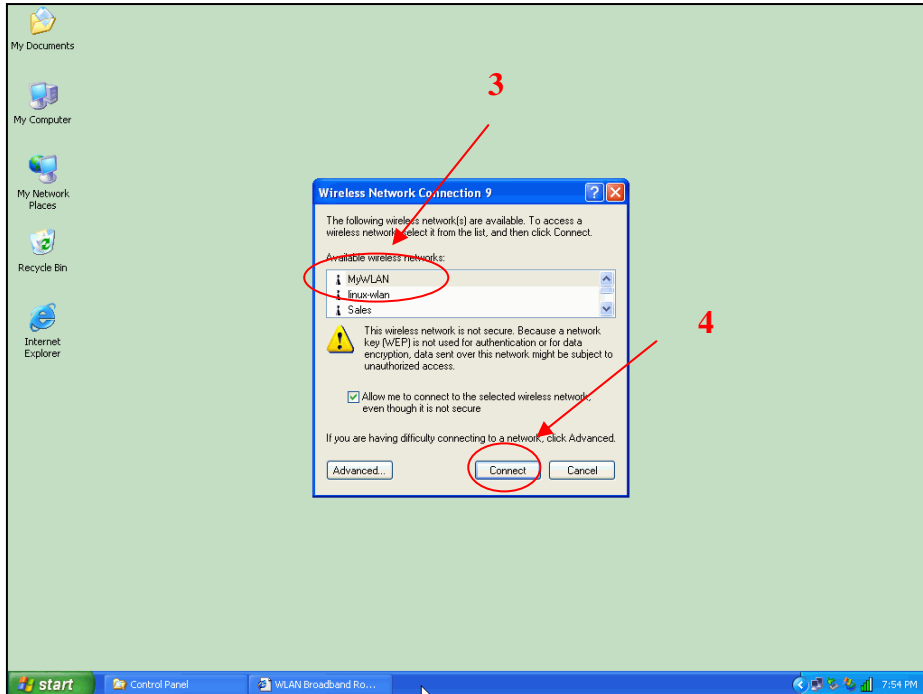
Quick Installation Guide of Wireless 802.11g Broadband Router

~ Version 1.0 ~

Step Three – Connect WLAN client to WLAN Broadband Router wirelessly



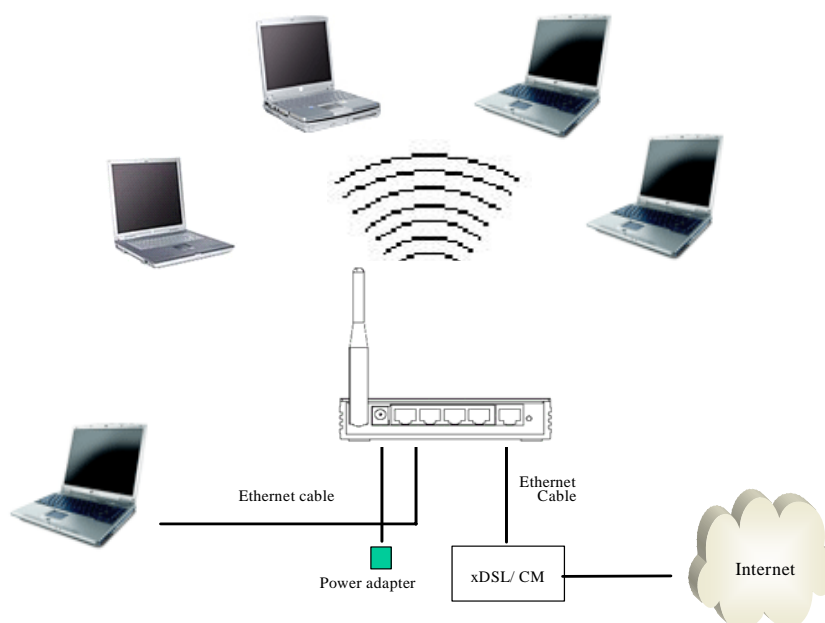
- On your wireless client PC:
1. Move your mouse to the Network icon on the Task bar and right click the mouse button to bring up the pop-up menu.
 2. Click the View Available Wireless Networks on the pop-up menu.



3. Select the specific WLAN network (SSID) from the Available Networks list.
4. Click the Connect button to establish the communication link to the wireless network

Quick Installation Guide of Wireless 802.11g Broadband Router

~ Version 1.0 ~



The wireless network diagram of WLAN Broadband Router..

Reference

Please consult the user's manual of WLAN Broadband Router for detailed and complete operation guide.

The equipment has been tested and found to comply with FCC and CE Rules. Operation is subject to the following two conditions:

- (1) This device may not cause harmful interference.
- (2) This device must accept any interference received including interference that may cause undesired operation.



Quick Installation Guide of Wireless 802.11g Broadband Router

~ Version 1.0 ~

Federal Communication Commission Interference Statement

This equipment has been tested and found to comply with the limits for a Class B digital device, pursuant to Part 15 of the FCC Rules. These limits are designed to provide reasonable protection against harmful interference in a residential installation. This equipment generates, uses and can radiate radio frequency energy and, if not installed and used in accordance with the instructions, may cause harmful interference to radio communications. However, there is no guarantee that interference will not occur in a particular installation. If this equipment does cause harmful interference to radio or television reception, which can be determined by turning the equipment off and on, the user is encouraged to try to correct the interference by one of the following measures:

- Reorient or relocate the receiving antenna.
- Increase the separation between the equipment and receiver.
- Connect the equipment into an outlet on a circuit different from that to which the receiver is connected.
- Consult the dealer or an experienced radio/TV technician for help.

This device complies with Part 15 of the FCC Rules. Operation is subject to the following two conditions: (1) This device may not cause harmful interference, and (2) this device must accept any interference received, including interference that may cause undesired operation.

FCC Caution: Any changes or modifications not expressly approved by the party responsible for compliance could void the user's authority to operate this equipment.

IMPORTANT NOTE:

FCC Radiation Exposure Statement:

This equipment complies with FCC radiation exposure limits set forth for an uncontrolled environment. This equipment should be installed and operated with minimum distance 20cm between the radiator & your body.

This transmitter must not be co-located or operating in conjunction with any other antenna or transmitter.

The WRTR-141 (FCCID: RYK-WRTR141) is limited in CH1~CH11 for 2.4 GHz by specified firmware controlled in U.S.A.

Quick Installation Guide of Wireless 802.11g Broadband Router

~ Version 1.0 ~

EC Declaration of Conformity

Name applicant:

SparkLAN Communications, Inc.

3F, No. 246, Sec. 1, Neihu Road, Neihu Chiu, Taipei, Taiwan, ROC 114

Hereby declares under sole responsibility that product

Brand name: SparkLAN

Product number: WRTR-141

Product description: Wireless 802.11g Broadband Router

To which this declaration relates complies with the requirements of the following standards:

EN 300 328

EN 301 489-1/17

EN 60950

This certifies that the designated product as described above complies with the directives described above and carries the CE marking accordingly.

This declaration has been signed under responsibility of the manufacturer / importer.

Name manufacturer / importer:

Sparklan Communications

Date: July 31, 2006

Mike Chen



CEO

Product article code: WRTR-141

Product description: Wireless 802.11g Broadband Router

Product manufacturer / importer: SparkLAN Communications, Inc.



Countries in which the product as described above may be used freely:

Austra, Belgium, Denmark, Finland, France, Germany, Greece, Iceland, Ireland, Italy, Luxembourg, Netherlands, Norway, Portugal, Spain, Sweden, Switzerland, UK

Countries where usage of the product as described above is prohibited:

None.

Countries where usage of the product as described below is limited:

France: The use of other channels than the channels 10 through 13 is prohibited by law.