

Presenter with *Bluetooth*[®] wireless technology

RC201 USER GUIDE



!!! Attention!!!

- *Do not allow minors to use the laser point unsupervised. Laser point is not a toy.*
- *Avoid direct eye exposure.*
- *Never shine the laser point at anyone. The laser point is designed to illustrate inanimate objects.*
- *Do not point the laser point at any mirror-like surfaces. A reflected beam can act like a direct beam on the eye.*

Table of Contents

| | |
|---|-----------|
| INTRODUCTION | 3 |
| FEATURES..... | 3 |
| PACKAGE CONTENTS..... | 3 |
| SYSTEM REQUIREMENTS | 3 |
| KEY DEFINITION | 4 |
| INSTALLATION AND OPERATION..... | 5 |
| SPECIFICATIONS | 15 |
| TROUBLESHOOTING..... | 16 |
| APPENDIX – INSTALL BLUETOOTH DONGLE..... | 18 |

Caution!

No part of manual may be reproduced or modified without our written permission.

Trademarks

Microsoft®, Windows®, Windows 2000®, Windows XP® and Windows Vista® are U.S. registered trademarks of Microsoft Corporation. IBM and PC are registered trademarks of IBM Corporation. All brands, products and companies are trademarks of registered trademarks of their respective companies.

The *Bluetooth®* word mark and logos are owned by the Bluetooth SIG, Inc. and any use of such marks is under license. Other trademarks and trade name are those of their respective owners.

Notice

The information contained in this document is subject to change without notice. All rights are reserved. No part of document may be photocopied, reproduced, or translated to another language, for any purpose, without our written permission.

FCC AND CE RADIATION NORM**FCC**

This equipment has been tested and found to comply with limits for a Class B digital device pursuant to Part 15 of Federal Communication Commission (FCC) rules.

CE

This equipment has been tested and found to comply with the limits of the European Council Directive on the approximation of the law of the member states relating to electromagnetic compatibility (89/336/EEC) according to EN 55022 class B & EN55024.

FCC AND CE COMPLIANCE STATEMENT

These limits are designed to provide reasonable protection against frequency interference in residential installation. This equipment generates, uses and can radiate radio frequency energy, and if not installed or used in accordance with the instructions, may cause harmful interference to radio communication. However, there is no guarantee that interference will not occur in a television reception, which can be determined by turning the equipment off and on, the user is encouraged to try and correct the interference by one or more of the following measures:

- Reorient or relocate the receiving antenna
- Increase the separation between the equipment and the receiver
- Connect the equipment into an outlet on a circuit different from that to which the receiver is connect to

**CAUTION!**

The Federal Communication Commission warns the user that changes or modifications to the unit not expressly approved by the party responsible for compliance could void the user's authority to operate the equipment.

BM-RC201/LF

Introduction

Presenter RC201 is more than a presenter. Its mouse function makes it a handy tool to enhance your experiences and enjoyments during presentations.

Bluetooth[®] wireless technology makes RC201 to transmit up to 30 feet (10 meters).

With its omni-directional transmission, you can confidently conduct the business meeting, hold the conference, and instruct the teaching lesson.

Presentation hotkey can open the prepared PowerPoint files. Laser point helps to catch audiences' attention.

Features

1. Innovative design of omni-directional Presenter let you conduct a perfect presentation
2. Presentation hotkey allows you to start the prepared PowerPoint files conveniently
3. Laser point helps you to catch audiences' attention
4. Work with a value software, *aimMaster BT*
5. Slim type design, you may store it in your notebook's PCMCIA slot easily

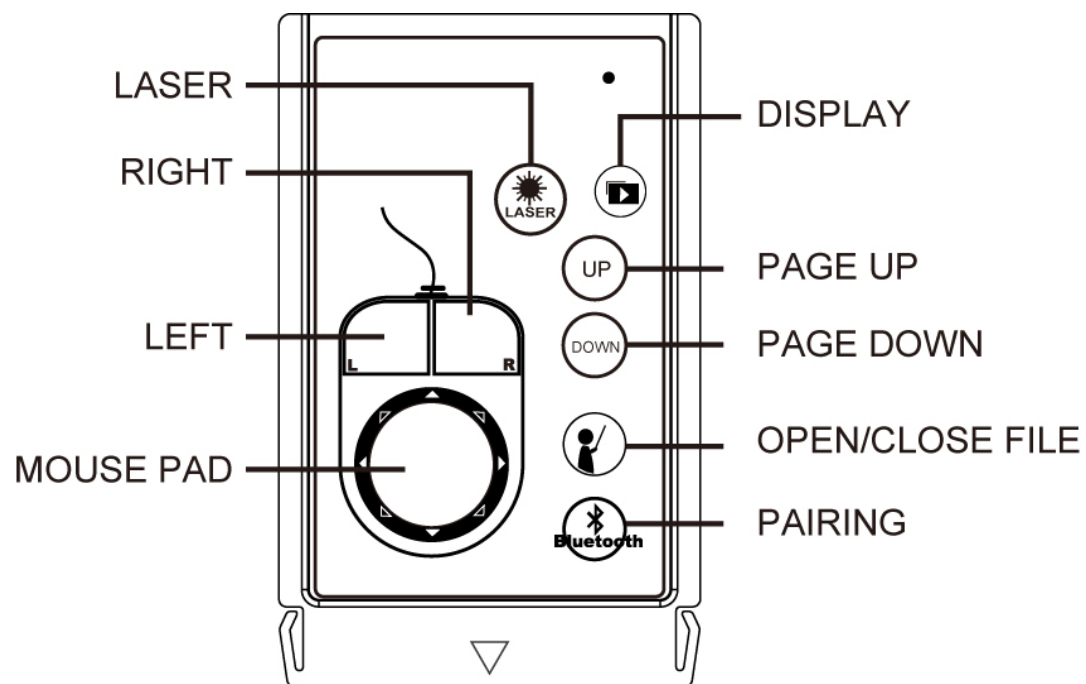
Package Contents

- Presenter RC201
- Value Software *aimMaster BT* CD-ROM
- Coin Type Lithium battery CR2032 x 1
- USB type Bluetooth Dongle (Optional device)

System Requirements

- Built in *Bluetooth*[®] wireless technology (PC) or external Dongle with *Bluetooth*[®] wireless technology
- *Bluetooth*[®] profile need to support HID minimum
- Microsoft® Windows® 2000 SP4, XP SP2, Vista
- 64MB RAM recommended
- CD-ROM drive or DVD-ROM drive

Key Definition



Installation and Operation

When Presenter RC201 isn't in use, please take off the battery to save power.

1. Installation of battery

Open the back cover of Presenter and insert a Coin Type CR2032 Lithium battery with the diagram inside the battery chamber.

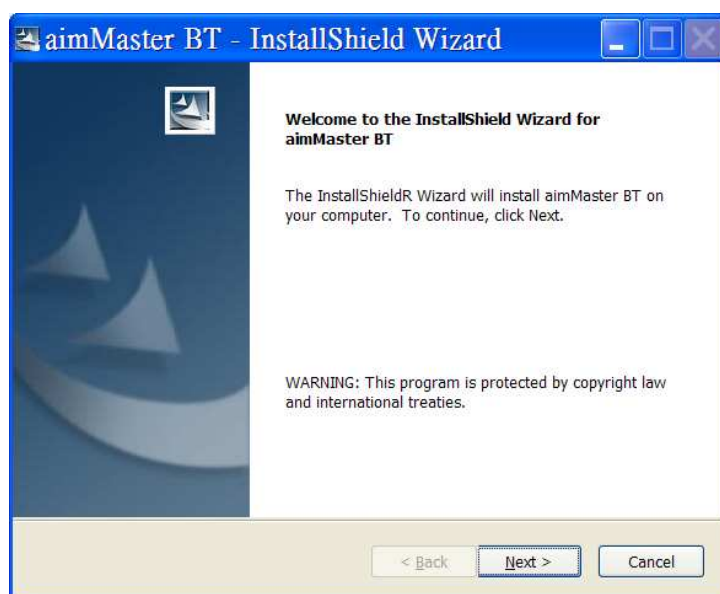


2. Power on the function of *Bluetooth*® wireless technology

Turn on the function of *Bluetooth*® wireless technology if your NB builds in a receiver with *Bluetooth*® wireless technology, or insert a *Bluetooth*® dongle and turn on the *Bluetooth*® wireless technology function.

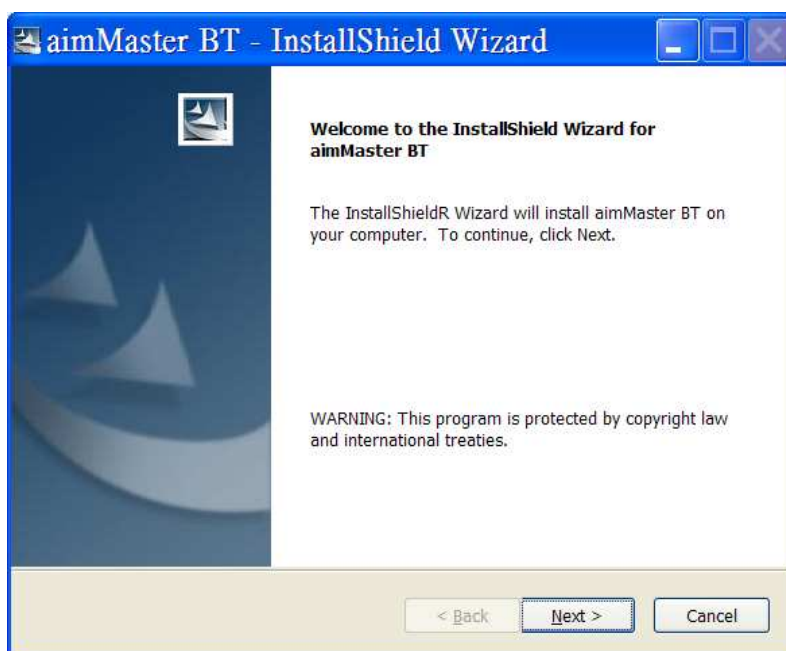
3. Install *aimMaster BT*

Insert the CD to your computer. The following window will pop up. You can also run the installation by click setup.exe.

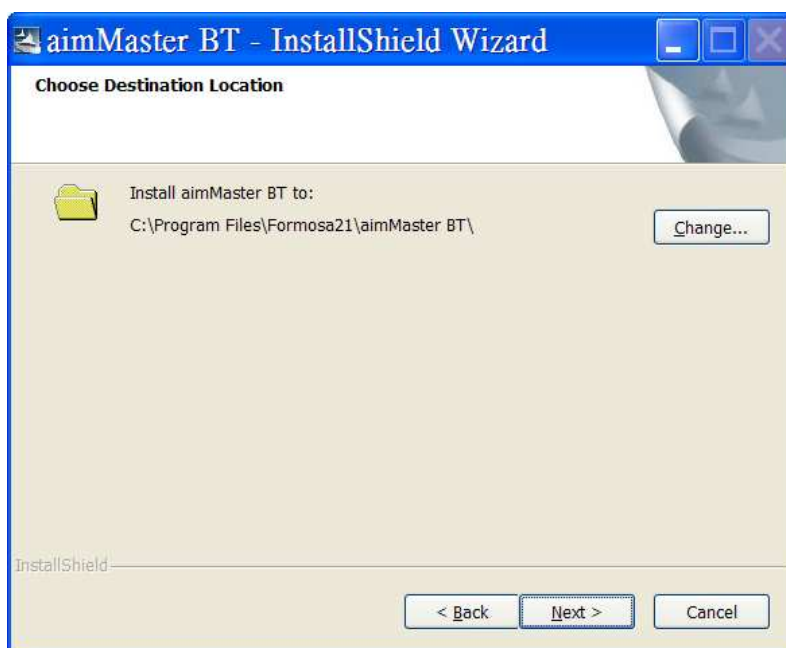


Note: You also can download the latest application software from <http://www.aimpro21.com/> > Support > Download Center

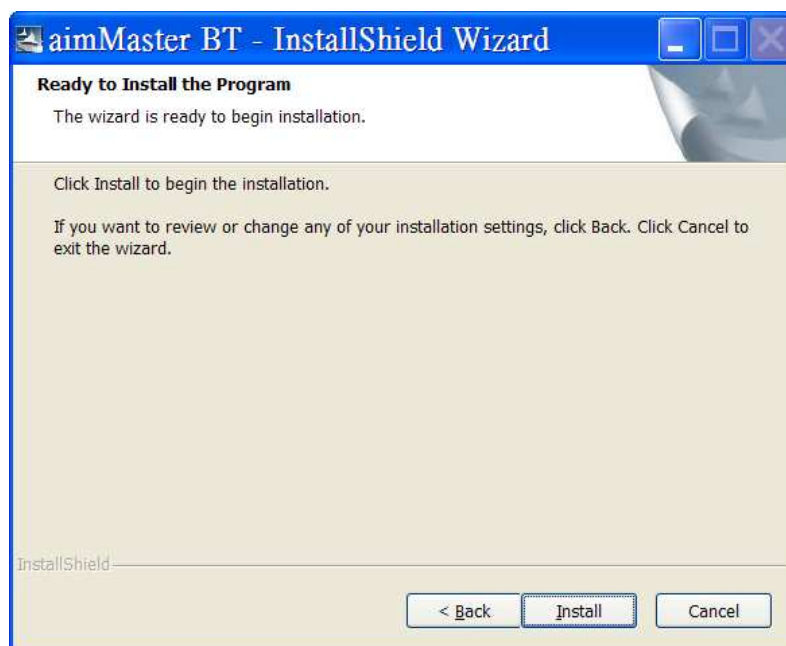
Click “ Next”



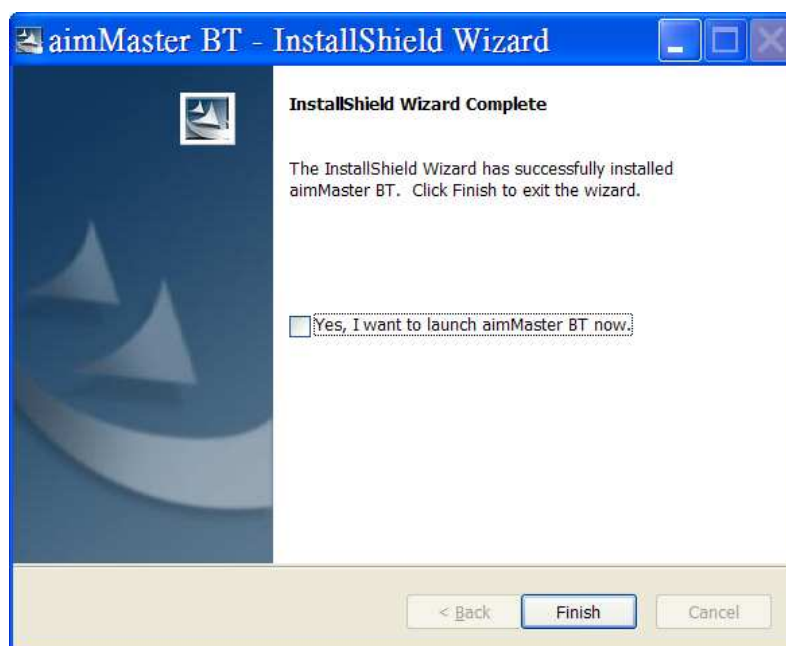
Click “ Next”



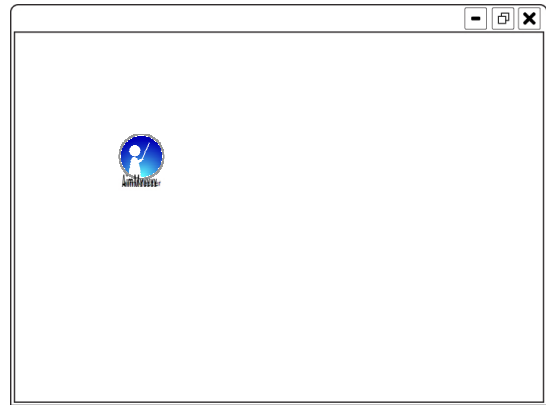
Click “ Install”





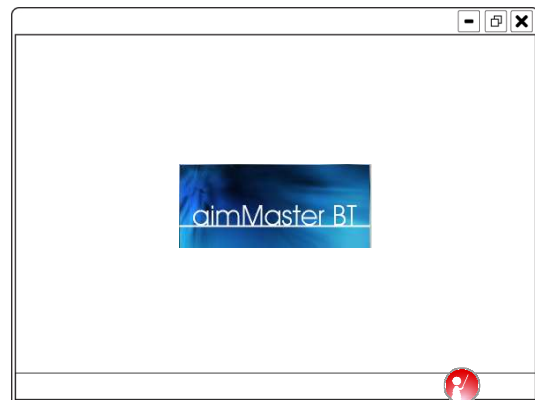
Choose “ Yes, I want to launch *aimMaster BT* now” and click “ Finish” to start using *aimMaster BT*.





If you didn't select "Yes, I want to launch *aimMaster BT* now", double click the shortcut icon of *aimMaster BT* shown on your desktop to activate *aimMaster BT*.

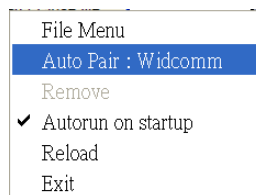


The message window will pop up for 3 seconds to remind you that the *aimMaster BT* is activated. You will see the *aimMaster BT* icon  (*Bluetooth®* connection is unbinding) or  (*Bluetooth®* connection is binding) on the system tray. The system tray icon will be disappeared when the receiver is removed.



4. Use *aimMaster BT* application to auto-pair with Presenter RC201

- 1) Press and hold  button on the presenter for 3–5 seconds.
The presenter will enter the pairing mode for 1 minute and the blue LED indicator flashes 1 time per 1–2 seconds till the pairing is complete.
Please make sure the presenter is in pairing mode before going to the next step.
- 2) Start the *Bluetooth*[®] service of your Desktop or Laptop first.
- 3) Right click the “ *aimMaster BT* ” icon  on the system tray, and select the “ Auto Pair ” item to do *Bluetooth*[®] auto-pair. (“ Widcomm ” is a kind of *Bluetooth*[®] driver. “ *aimMaster BT* ” will detect what kind of *Bluetooth*[®] driver your platform uses automatically)




After pairing, the icon on system tray will change to




- 4) Use Presenter
You may start to use the Mouse and LASER, LEFT, RIGHT, PAGE UP, PAGE DOWN buttons for presentation.

5. Set file hotlink

- 1) Double click the “ *aimMaster BT*” icon  on the system tray, and the main window of “ *aimMaster BT*” will pop up.






- 2) Click the button “ Browse” (or “ Clear”) on the window to set (or clear) the hotlink of the file. (up to 3 files)
- 3) When the file hotlink(s) is set, pressing  on Presenter will open the linked file(s) for presentation.

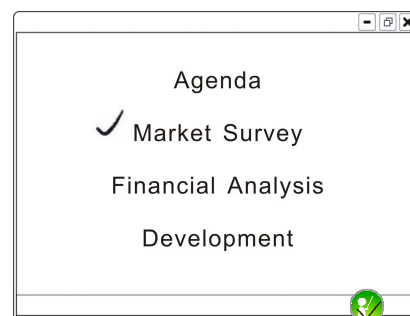
6. Use mark function


In a presentation, you can use the mark pen to highlight some important articles or blank the screen to catch the audiences’ attention.

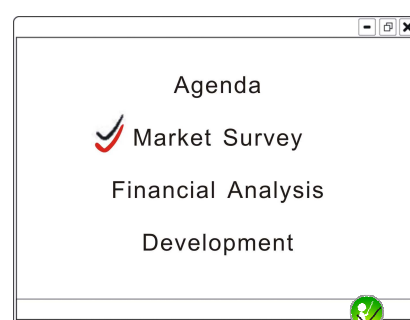
aimMaster BT supports two mark pens, Check Pen and Line Pen. It also provides a blank function. You can blank the screen so that the audiences will focus on your speech. When you enter **mark function**, you can click the RIGHT button to choose one of the 4 modes, Check Pen, Line Pen, Mouse and Blank.

Check Pen Mode




Press and hold the RIGHT button  for 2 seconds to enable **mark function**. The first mode entered is Check Pen Mode. A check symbol ✓ will replace the cursor symbol and the *aimMaster BT* icon on the system tray will be changed from  to .



In the Check Pen Mode, each LEFT  click will leave a red check mark ✓ below the cursor ✓ position.







Please refer to the following table for the different modes.




| Mark Pen Mode | Cursor | Mark | System Tray |
|---------------|--------|------|---|
| Check Pen | ✓ | ✓ |  |
| Line Pen | — | — |  |
| Mouse | ↔ | n.a. |  |
| Blank | n.a. | n.a. | n.a. |

Note: When you turn on your computer, please remember to run *aimMaster BT*, otherwise when you press and hold RIGHT button for 2 seconds, you can **NOT** enter the Check Mark Mode.

Line Pen Mode




Click the RIGHT button  once; **aimMaster BT** will go from the Check Pen Mode into the Line Pen Mode. The cursor symbol becomes  and the **aimMaster BT** icon on the system tray is changed from  into .





In the Line Pen Mode, press and hold the LEFT button  will draw a red line from right end of the cursor  location and this red line extends towards the right direction. The longer you hold the LEFT button , the longer the red line is.



Mouse Mode

Click the RIGHT button  again to go from the Check Mode into the Mouse Mode. In this mode, the cursor becomes an arrow . The **aimMaster BT** icon will change to  on the system tray. It has the normal mouse functions. You can move the Mouse STICK and LEFT/RIGHT click your hyper-link file that is inserted in your Presentation file.




In the Mouse Mode, click the RIGHT button  to go back to the Check Pen Mode. In this way, the 3 modes, Check Pen, Line Pen, and Mouse, are cycled by the RIGHT button  clicks.

Undo the Marks


To undo the Check/Line Marks you have done on the screen, click PAGE UP button once will clear the latest Check/Line Mark. The further PAGE UP clicks will undo the marks until all the Check/Line marks are cleared.

Clear all Marks


To clear all Check/Line Marks, you may either click PAGE DOWN button once, or, press the ESC key of your keyboard. the mark function is then disabled.

When you want to use mark pen again, press and hold RIGHT button  for 2 seconds to enable *the mark function* and enter the Mark Pen Mode as we described previously.

Blank the Screen

When the *mark function* is enabled, press and hold the RIGHT button  for 1 second, the screen becomes blank. To get back the original screen, click PAGE DOWN button once. *aimMaster BT* will go back to one of the 3 modes, Check Mark, Line Mark, and Mouse.


Quit from *aimMaster BT*

If your receiver is unplugged from the computer, the icon on the system tray will be hidden, but *aimMaster BT* is still running. Please move the cursor above the *aimMaster BT* icon on the system tray, click the RIGHT button  and then, LEFT click “quit” to exit from *aimMaster BT*.



Note :

1. Low battery

When the battery of Presenter reduced to lower voltage, the icon on the system tray will change to . The battery voltage also can be checked from the main window of *aimMaster BT*.



2. Mouse function using guide

The mouse function operation is different from a “ touch pad” . You may see it as an “ 8-directional buttons” on the mouse pad. With them, you can move the cursor easily.

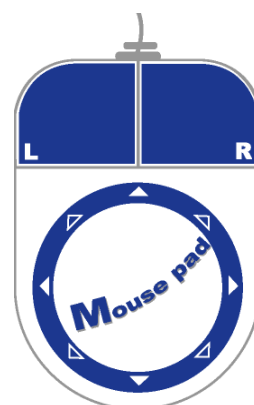


similar to a mouse Left-Key.



similar to a mouse Right-Key.

The 8-directional buttons on mouse pad are shown on the left figure.



Specifications

| Item | Description |
|------------------------|--|
| Standard | <i>Bluetooth</i> [®] wireless technology specification version 2.0 compatible |
| Frequency Band | 2.4GHz~2.4835GHz unlicensed ISM Band |
| Output Power | 0.25mW ~ 2.5mW (Bluetooth Power Class II) |
| Range | >10 meters (free space) |
| Battery | CR 2032 |
| Operating voltage | 3.2V ~ 2.8V |
| Dimension | 86 x 53.8 x 4.9 mm |
| Weight | < 25g (including battery) |
| Certification Approval | CE , FCC , BQB |

Bluetooth[®] Timing:

- Press connection button 3 sec to go into pairing mode
- From pairing mode to sleep mode: 1 min
- From active mode to idle mode: 0.5 sec
- From idle mode to sleep mode: 10 mins
- Pairing mode: LED flashes in first 3 secs
- Active mode: LED flashes 1 time (per sec for mouse pad) while pressing the button
- Idle mode: LED flashes 1 time per 10 secs
- Sleeping mode: LED stops flashing

Troubleshooting

You can't use the mark pen when you press and hold the RIGHT button for more than 2 seconds

You need to run *aimMaster BT* exe file before you can enable the mark function. Then you can press and hold the RIGHT button for more than 2 seconds to start using mark pen.

Note:

If you plan to use a computer that does not belong to you, you need to store the *aimMaster BT* exe file into a USB flash drive. Plug it into the computer to be used for the presentation, and double click this exe file before the presentation.

Computer does not respond to clicks on the presenter

The presenter red indicator does not flash when you click the presenter buttons

- **The pairing is lost**
Please refer to section “ Installation and Operation” and do the *Bluetooth*[®] pairing again on page 9.
- **The presenter batteries run out of electricity.**
Please change a new Lithium battery CR2032.
- **The laser pointer is still working**
The battery voltage might be too low although the laser pointer is still working. Please change another new battery CR2032.

Your cursor is moving too fast or too slow when you use the Mouse of the presenter

Please go to the control panel of your PC system to adjust the mouse speed.

You changed a new *Bluetooth®* dongle

You need to re-pair the presenter and the dongle. Please follow the instruction of pairing on Page 9.

You can' t remove the *Bluetooth®* pairing

If you use IVT *Bluetooth®* driver, you can use Presenter normally after the *Bluetooth®* pairing is established, but it can' t be removed.

Appendix – Install Bluetooth Dongle

Bluetooth dongle is an optional device if your PC doesn't build in Bluetooth. It is easy for you to install it. If the dongle has its own driver, please install it first. Then plug the dongle into the USB port of your computer. If the dongle has no extra driver, it will be detected by the operating system automatically, and use the Microsoft standard driver.

Before you use it, please make sure your computer follow the system requirements as bellow:

1. Make sure the system is at least Windows XP Service pack 2 or above.
2. After installing the dongle and software, please restart the computer to ensure all the functions work correctly.