



Hammerhead Off-Road
Scooters Owners Book
Model:

Jet 50, Fox 50, Thunder BIke 50
Thunder Bike 150

DEAR USERS:

WE WOULD LIKE TO INFORM YOU THAT UNDER OUR STRICT QUALITY CONTROL SYSTEM FOR THE PRODUCTION OF OUR SCOOTERS, WE OFFER A COMPLETE GUARANTEE AS INDICATED IN THE GUARANTEE BOOKLET ISSUED BY OUR DEALER. OUR SCOOTER MUST UNDERGO ALL PERIODIC MAINTENANCE AND SERVICES. BESIDES, ORIGINAL SPARE PARTS MUST BE USED. IN CASE OF DEFERRED IN STRUCTURE OR PART MATERIALS PRODUCED, ASSISTANCE IS OFFERED AT FREE OF CHARGE UNDER VALID WARRANTY. THE ABOVE MENTIONED GUARANTEE IS NOT VALID UNDER THE FOLLOWING CONDITIONS:

- ① LUBRICATING OIL DOES NOT MEET THE SPECIFICATION.
- ② MAINTENANCE OR REPAIR IS NOT CARRIED OUT IN THE APPROPRIATE MANNER.
- ③ UNGUARANTEED PARTS ARE UTILIZED AND MODIFICATIONS TO THE ORIGINAL DESIGN IS CARRIED OUT.
- ④ INSTRUCTIONS IN THE OWNER'S MANUAL ARE NOT PROPERLY FOLLOWED.
- ⑤ PARTS SUBJECT TO NORMAL WEAR SUCH AS THE SEAT, SPARK PLUGS, BRAKE PADS ELECTRIC BULBS AND CABLES.....ETC, ARE NOT COVERED BY GUARANTEE.

THIS MANUAL IS A GUIDE FOR THE OPERATION INSPECTION AND BASIC MAINTENANCE OF THIS SCOOTER. IF YOU HAVE ANY FURTHER QUERIES PLEASE CONTACT THE **ADLY** DEALER, WHO WILL BE READY TO HELP YOU AT ALL TIMES.

**SALES DEPARTMENT
HAMMERHEAD OFFROAD**

THUNDER BIKE 50



THUNDER BIKE 150



FOX 50



JET 50



CONTENT

SPECIFICATION.....	1
IDENTIFICATION NUMBERS RECORD.....	5
PARTS NAME AND LOCATION	6
USER'S GUIDE	7
MAINTENANCE & INSPECTION.....	22
PRE-OPERATION CHECK	33
SAFE RIDING TIPS.....	35
VIN NUMBER AND SERVICE RECORD.....	37

SPECIFICATION

MODEL		TB-50	SS-50	ST-50	TB-100	SS-100	ST-100
OVEREALL LENGTH	mm	1780 (70.08in)			1780 (70.08in)		
OVEREALL WIDTH	mm	675 (26.57in)			675 (26.57in)		
OVEREALL HEIGHT	mm	1160 (45.67in)			1160 (45.67in)		
BASSIC WEGHTE	kg	77 (169.76lb)			77 (169.76lb)		
CYLINDER TYPE		HORIZONTAL			HORIZONTAL		
DISPLACE MENT		49.26			95.57		
COMPRESSION RATIO		7.2			5.8		
ENGINE COOLING		AIR COOLED			AIR COOLED		
LUBRICATION		BY OIL PUMP			BY OIL PUMP		
BORE×STROKE		40×39.2			52×45		
NUBER OF STROKE	T	2			2		
IGNITION		C.D.I			C.D.I		
STARTING SYSTEM		ELECTRIC & KICK			ELECTRIC & KICK		
BATTERY		12V – YTX4L			12V – YTX4L		
FUEL		UNLEAD			UNLEAD		
FUEL CAPACITY	L	6			6		
TRANSMISSION		C.V.T			C.V.T		
BRAKE SYSTEM		F: DISC		R:DRUM	F: DISC		R:DRUM
LAMPS		EC		US	EC		US
	FRONT LAMPS	12V 35W / 35W		12V 35W / 35W	12V 35W / 35W		12V 35W / 35W
	REAR LAMPS	12V 5W 12V 21W		12V 5W 12V 21W	12V 5W 12V 21W		12V 5W 12V 21W
	TURN LAMPS	12V 10W		12V 21W	12V 10W		12V 21W
	TURN LAMPS	12V 10W		12V10W	12V 10W		12V 10W
TIRE AND WHEEL	FRONT	2.0 kgf / c m ²			2.0 kgf / c m ²		
	REAR	2.25 kgf / c m ²			2.25 kgf / c m ²		
	MAX. LOAD	225 kgf			225 kgf		
	SIZE	12 / 70 / 12			12 / 70 / 12		

SUBJECT TO CHANGE SPECIFICATION WITHOUT NOTICE.

SPECIFICATION

MODEL		TB-125	SS-125	ST-125	TB-150	SS-150	ST-150
OVEREALL LENGTH	mm	1780 (70.08in)			1780 (70.08in)		
OVEREALL WIDTH	mm	675 (26.57in)			675 (26.57in)		
OVEREALL HEIGHT	mm	1160 (45.67in)			1160 (45.67in)		
BASSIC WEGHTE	kg	77 (169.76lb)			77 (169.76lb)		
CYLINDER TYPE		HORIZONTAL			HORIZONTAL		
DISPLACE MENT		124			150		
COMPRESSION RATIO		9.2			9.8		
ENGINE COOLING		AIR COOLED			AIR COOLED		
LUBRICATION		BY OIL PUMP			BY OIL PUMP		
BORE×STROKE		52.4×57.8			57.4×57.8		
NUBER OF STROKE	T	4			4		
IGNITION		C.D.I			C.D.I		
STARTING SYSTEM		ELECTRIC & KICK			ELECTRIC & KICK		
BATTERY		12V – YTX7A			12V 6A		
FUEL		UNLEAD			UNLEAD		
FUEL CAPACITY	L	6			6		
TRANSMISSION		C.V.T			C.V.T		
BRAKE SYSTEM		F: DISC		R:DRUM	F: DISC		R:DRUM
		EC		US	EC		US
LAMPS	FRONT LAMPS	12V 35W / 35W		12V 35W / 35W	12V 35W / 35W		12V 35W / 35W
	REAR LAMPS	12V 5W 12V 21W		12V 5W 12V 21W	12V 5W 12V 21W		12V 5W 12V 21W
	BRAKE LAMPS						
	TURN LAMPS	12V 10W		12V 21W	12V 10W		12V 21W
	TURN LAMPS	12V 10W		12V10W	12V 10W		12V 10W
TIRE AND WHEEL	FRONT	2.0 kgf / c m ²			2.0 kgf / c m ²		
	REAR	2.25 kgf / c m ²			2.25 kgf / c m ²		
	MAX. LOAD	225 kgf			225 kgf		
	SIZE	12 / 70 / 12			12 / 70 / 12		

SUBJECT TO CHANGE SPECIFICATION WITHOUT NOTICE.

SPECIFICATION

MODEL		JET-50	SF-50	JET-100	SF-100
OVEREALL LENGTH	mm	1730 (68.11in)		1730 (68.11in)	
OVEREALL WIDTH	mm	680 (26.77in)		680 (26.77in)	
OVEREALL HEIGHT	mm	1100 (43.30in)		1100 (43.30in)	
BASSIC WEGHTE	kg	75 (165lb)		75 (165lb)	
CYLINDER TYPE		HORIZONTAL		HORIZONTAL	
DISPLACE MENT		49.26		95.57	
COMPRESSION RATIO		7.2		5.8	
ENGINE COOLING		AIR COOLED		AIR COOLED	
LUBRICATION		BY OIL PUMP		BY OIL PUMP	
BORE×STROKE		40×39.2		52×45	
NUBER OF STROKE	T	2		2	
IGNITION		C.D.I		C.D.I	
STARTING SYSTEM		ELECTRIC & KICK		ELECTRIC & KICK	
BATTERY		12V – YTX4L		12V – YTX4L	
FUEL		UNLEAD		UNLEAD	
FUEL CAPACITY	L	6		6	
TRANSMISSION		C.V.T		C.V.T	
BRAKE SYSTEM		F: DISC	R:DRUM	F: DISC	R:DRUM
		EC	US	EC	US
LAMPS	FRONT LAMPS	12V 35W / 35W	12V 60 /55W	12V 35W / 35W	12V 60 /55W
	REAR LAMPS	12V 21W	12V 21W	12V 21W	12V 21W
	BRAKE LAMPS	12V 5W	12V 5W	12V 5W	12V 5W
	TURN LAMPS	12V 10W	12V 21W	12V 10W	12V 21W
	TURN LAMPS	12V 10W	12V 21W	12V 10W	12V 21W
TIRE AND WHEEL	FRONT	2.0 kgf / c m ²		2.0 kgf / c m ²	
	REAR	2.25 kgf / c m ²		2.25 kgf / c m ²	
	MAX. LOAD	225 kgf		225 kgf	
	SIZE	F: 120/90-10(130/60-13)		F: 120/90-10(130/60-13)	
		R: 130/90-10(130/60-13)		R: 130/90-10(130/60-13)	

SUBJECT TO CHANGE SPECIFICATION WITHOUT NOTICE.

SPECIFICATION

MODEL		PAN-50		PAN-100	
OVEREALL LENGTH	mm	1800 (70.86in)		1800 (70.86in)	
OVEREALL WIDTH	mm	785 (30.90in)		785 (30.90in)	
OVEREALL HEIGHT	mm	1290 (50.78in)		1290 (50.78in)	
BASSIC WEGHTE	kg	83 (182.6lb)		83 (182.6lb)	
CYLINDER TYPE		HORIZONTAL		HORIZONTAL	
DISPLACE MENT		49.26		95.57	
COMPRESSION RATIO		7.2		5.8	
ENGINE COOLING		AIR COOLED		AIR COOLED	
LUBRICATION		BY OIL PUMP		BY OIL PUMP	
BORE×STROKE		40×39.2		52×45	
NUBER OF STROKE	T	2		2	
IGNITION		C.D.I		C.D.I	
STARTING SYSTEM		ELECTRIC & KICK		ELECTRIC & KICK	
BATTERY		12V – YTX4L		12V – YTX4L	
FUEL		UNLEAD		UNLEAD	
FUEL CAPACITY	L	6		6	
TRANSMISSION		C.V.T		C.V.T	
BRAKE SYSTEM		F: DISC R:DRUM		F: DISC R:DRUM	
		EC	US	EC	US
LAMPS	FRONT LAMPS	12V 15W	12V 1.7W	12V 18W	12V1.7W
	FRONT LAMPS	12V 15W	12V 55W	12V 18W	12V 55W
	REAR LAMPS	12V 21W	12V 21W	12V 21W	12V 21W
	BRAKE LAMPS	12V 5W	12V 5W	12V 5W	12V 5W
	TURN LAMPS	12V 10W	12V 21W	12V 10W	12V 21W
	TURN LAMPS	12V 10W	12V 21W	12V 10W	12V 21W
TIRE AND WHEEL	FRONT	2.0 kgf / c m ²		2.0 kgf / c m ²	
	REAR	2.25 kgf / c m ²		2.25 kgf / c m ²	
	MAX. LOAD	225 kgf		225 kgf	
	SIZE	12 / 70 / 12		12 / 70 / 12	

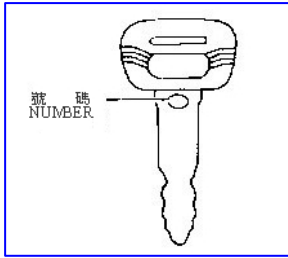
SUBJECT TO CHANGE SPECIFICATION WITHOUT NOTICE.

SPECIFICATION

MODEL		SF-50		PAN-50	
OVEREALL LENGTH	mm	1730 (68.11in)		1800 (70.86in)	
OVEREALL WIDTH	mm	680 (26.77in)		785 (30.90in)	
OVEREALL HEIGHT	mm	1100 (43.30in)		1290 (50.78in)	
BASSIC WEGHTE	kg	75 (165lb)		83 (182.6lb)	
CYLINDER TYPE		HORIZONTAL		HORIZONTAL	
DISPLACEMENT		49.5		49.5	
ENGINE COOLING		AIR COOLED		AIR COOLED	
LUBRICATION		BY OIL PUMP		BY OIL PUMP	
NUBER OF STROKE	T	4		4	
IGNITION		C.D.I		C.D.I	
STARTING SYSTEM		ELECTRIC & KICK		ELECTRIC & KICK	
BATTERY		12V – YTX5L		12V – YTX5L	
FUEL		UNLEAD		UNLEAD	
FUEL CAPACITY	L	6		6	
TRANSMISSION		C.V.T		C.V.T	
BRAKE SYSTEM		F: DISC R:DRUM		F: DISC R:DRUM	
LAMPS	FRONT LAMPS	12V 35W / 35W	12V 35W / 35W	12V15W	12V 1.7W
				12V15W	12V 55W
	REAR LAMPS	12V 21W	12V 21W	12V 15W	12V 21W
	BRAKE LAMPS	12V 5W	12V 5W	12V 15W	12V 5W
	TURN LAMPS	12V 10W	12V21W	12V 10W	12V 21W
	TURN LAMPS	12V 10W	12V21W	12V 10W	12V 21W
TIRE AND WHEEL	FRONT	1.25 kgf / c m ²		1.25 kgf / c m ²	
	REAR	1.5 kgf / c m ²		1.5 kgf / c m ²	
	MAX. LOAD	190 kgf		190 kgf	
	SIZE	100/90-10		100/90-10	

SUBJECT TO CHANGE SPECIFICATION WITHOUT NOTICE.

IDENTIFICATION NUMBERS RECORD



1. KEY NUMBER

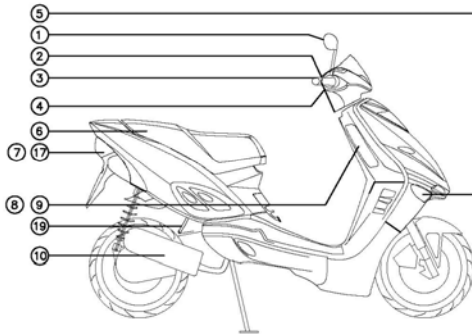
YOUR KEY IDENTIFICATION NUMBER IS ENGRAVED ON YOUR KEY AS SHOWN IN THE ABOVE ILLUSTRATION. RECORD THIS NUMBER AT THE SPACE PROVIDED FOR REFERENCE IF YOU NEED A NEW KEY.



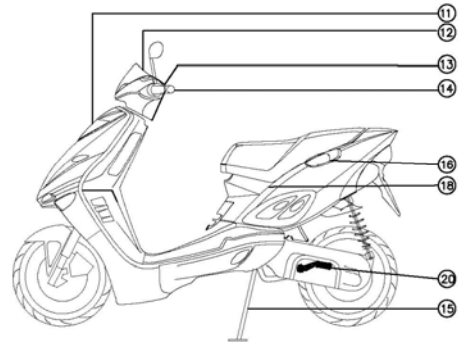
2. ENGINE NUMBER

RECORD YOUR ENGINE NUMBER IN THE SPACE PROVIDED TO ASSIST YOU IN ORDERING SPARE PARTS FROM ADLY DEALER OR FOR REFERENCE IN CASE YOUR VEHICLE IS STOLEN.

PART NAME AND LOCATION



- 1. REAR MIRROR
- 2. RIGHT HANDLE BAR SWITCH
- 3. THROTTLE GRIP
- 4. FRONT BRAKE LEVER
- 5. FRONT TURN SIGNAL LAMP
- 6. SEAT
- 7. BRAKE LAMP
- 8. MAIN SWITCH
- 9. STEERING LOCK
- 10. MUFFLER



- 11. HEAD LAMP
- 12. SPEEDOMETER
- 13. LEFT HANDLE BAR SWITCH
- 14. REAR BRAKE LEVER
- 15. MAIN STAND
- 16. SEAT LOCK
- 17. REAR LAMP
- 18. HELMET BOX
- 19. BATTERY BOX
- 20. KICK STARTER

USER'S GUIDE



☆☆ MAIN SWITCH

BETWEEN ON AND OFF POSITION. “*” POSITION IS FOR CHECKING LUBRICATION OIL WARNING LAMP WHEN THE KEY STAY AT “*” POSITION OIL

WARNING LIGHT WILL ILLUMINATE. IF RHE ELECTRIC BULB BREAKS, PLEASE CONTACT OUR AFTER SALES SERVICE THE FOR REPLACEMENT.

MAIN SWITCH LOCATION

LOCATION	FANCTION	CAN THE KEY BE TAKEN OUT
ON	ON RIDING AND UNDER THE PERFORMANCE OF ALL THE ELECTRIC PARTS RUNNING	NO
*	LUBRICANT OIL WARNING LIGHT	NO
OFF	SCOOTER STOP	YES
LOCK	PARKING HANDLE BAR TURN TO LEFT HAND SIDE, PUSH THE KEY AND TURN TO C.C.W. DIRECTION, THE HANDLIE BAR ON LOCK	YES



KICK STANTER AND AIR CLEANER

1. KICK STARTER

- ① WHEN THE ELECTRIC START DOES NOT WORK, PLEASE USE THE KICK STARTER INSTEAD.
- ② PLEASE LOCATE THE SCOOTER WITH MAIN STAND AND USE THE KICK START.

WARNING !

- ③ WHEN STARTING ON THE SLOPE AND BUMPED ROADS, PLEASE LIFT UP THE MAIN STAND AND MAKE SURE THE REAR WHEEL IS OFF-LAND, THEN HOLD THE REAR BRAKE LEVER TIGHTLY TO AVOID OSING CONTROL.
- ④ MOVE THE KEY POSITION TO “ ON ”POSITION ND USE THE KICK STARTER. LOCATE ENGINE STARTS; RELOCATE THE KICK STARTER TO ORIGINAL PLACE.

2. AIR FILTER



- ① PLEASE CLEAN AIR FILTERS EVERY 5000 KILOMERERS OR EVERY SIX MONTHS.
- ② RERIOR TO TAKING OFF THE AIR CLEANER, DISMANTILE THE LEFT SIDE COVER FIRST.
- ③ LOOSENT TWO BOLTS AND THREE SCREWS, TAKE OUT THE AIR FILTER.
- ④ AFTER CLEANING, SPRAY FEW OIL ON THE AIR FULTER SPONGE.

IMPORTANCE FOR STARTING

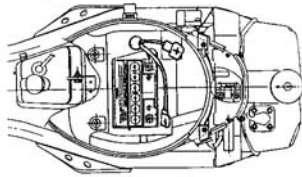


IMPORTANCE FOR STARTING

1. MAKE SURE THE FUEL TANK IS FILIED UP (PLEASE USE UNLEAD GASOLINE).
2. CHECK THE OIL LEVEL (PLEASE USE LUBRICANT OIL).
3. MAKE SURE THE KEY TURNS TO “ON” POSITION.
4. HOLD THE BRAKE LEVER AND PUSH THE ELECTRIC STARTER BUTTON OR KICK STARTER. IF YOU WANT TO START AFTER LONG PERIOD OF NO USING THE VEHICLE PLEASE USE THE KICK START FOR 3 OR 4 TIMES THEN USE THE ELECTRIC START BUTTON FOR 3 TO 4 TIMES. IF STILL CAN NOT START, FOLLOW THE NORMAL PROCEDURE TO START AGAIN.
- ☆ 5. IF THE ELECTRIC STARTER CAN NOT START THE ENGINE. RELEASE THE BUTTON FOR A FEW SECONDS AND TRY AGAIN. EVERY TRY SHOULD NOT LAST MORE THEN 5 SECONDS IN ORDER TO AVOID UNNECESSARY BATTERY POWER CONSUMPTION.
6. THIS SCOOTER USES AUTO CHOKE. IF IT FAILS TO START, THAT MEANS THE CARBURETOR’S CHOKE MAY OUT OF ORDER. PLEASE GO TO AN AUTHORIZED DEALER FOR CHECKING.
7. TO PROTECT THE ENGINE, PLEASE AVOID SUDDEN PICKING UP OR FULL SPEED RIDING WHEN THE ENGINE IS COLD.

WARNING!

- ① DON’T START THE ENGINE IN AN CLOSE ROOM, BECAUSE EXHAUST GAS IS TOXICANT AND WILL CAUSE PEOPLE TO LOSE CONSCIENCE WITHIN A VERY SHORT TIME. THEREFORE, IT IS NECESSARY TO START THE ENGINE IN OPEN SPACES.
- ② BEFORE RIDING, PLEASE MAKE SURE THE MAIN STAND AND SIDE STAND ARE PROPERLY RETURNED TO THE RIGHT POSITION; OTHERWISE, IT MIGHT CAUSE ACCIDENTS WHEN TURNING.

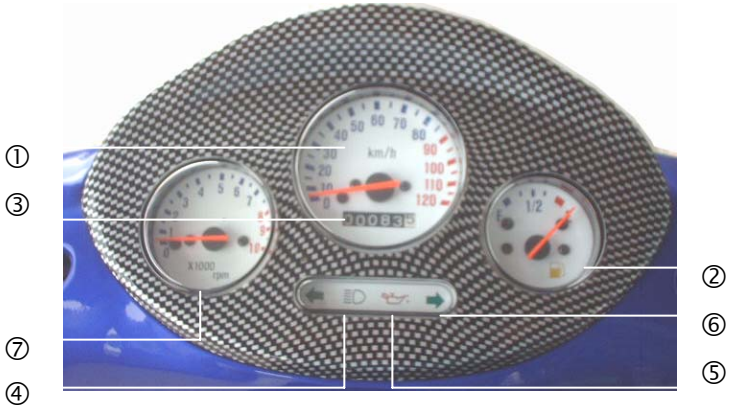


BATTERY AND FUSE

1. THE BATTERY OF TB 50/100 IS UNNECESSARY TO REFILL WATER.
2. REPLACE THE BATTERY PLEASE REMOVING HELEMET BOX MAT AND. BATTERY COVER, THEN TAKE OFF CABLE SO CAN REMOVE THE BATTERY.
3. THE FUSE IS NEAR THE BATTERY, ITS FUNCTIONS IS TO PROTECT THE ELECTRIC PARTS AND AVOID DAMAGES CAUSED BY SHORTCIRCUIT OR POWER OVER-LOAD IF THE MELT, THERE MAY BE SOMTHING IN THE ELECTRIC WIRES OR THE ELECTRIC PARTS DO NOT WORK COOECTLY. PLEASE GO TO AN AUTHORIZED DEALER TO EXAMINE IT IMMEDIATELY.
4. IF REPLACING THE FUSE, PLEASE ALWAYS USE A 7A TYPE.
5. IF MORE THEN TWO WEEKS DO NOT RIDE THE SCOORTER, PLEASE DIS-CONNET GRDUND (-) WIRE TO HAVE LONGER LIFE TIME OF THE BATTERY.

DASH BOARD

TB/SS/ST-50/100



TB/SS/ST-125/150



① SPEEDOMETER

② FUEL LEVEL METER

③ ODOMETER

④ HIGH BEAM LIGHT, WHEN YOU SWITCH ON THE HIGH BEAM, THE LIGHT WILL BE ON.
(BLUE)

⑤ OIL WARNING LIGHT(RED)

TURN THE MAIN SWITCH TO THE “*” POSITION BETWEEN “ON” AND “OFF”, THE OIL WARNING LIGHT WILL ILLUMINATE AT ONCE, AND THEN STOPS. A DIFFERENT APPROACH MAY CAUSE ABNORMAL REACTIONS, PLEASE TAKE THE VEHICLE TO THE DEALER FOR DETAILED EXAMINATION.

(NORMAL VOLUME OF THE OIL TANK ABOUT 800C.C, WHEN THE LEVEL IS WITHIN 150C.C, THIS LIGHT WILL BE ON AND PLEASE ADD THE OIL AS SOON AS POSSIBLE, OTHERWISE THE ENGINE WILL DAMAGE)

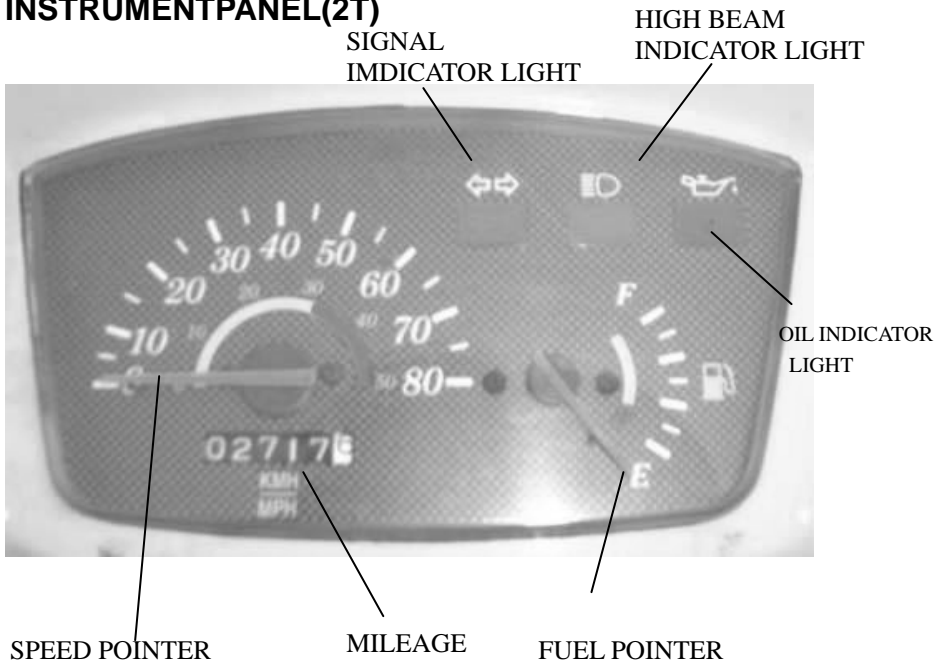
⑥ TURN SIGNAL LIGHT(GREEN)

WHEN SWITCH THE TURN SIGNAL, THE LIGHT WILL BE ON AND THE BEEP WARNING WILL SOUND OFF.

⑦ R.P.M. METER (OPTIONAL)

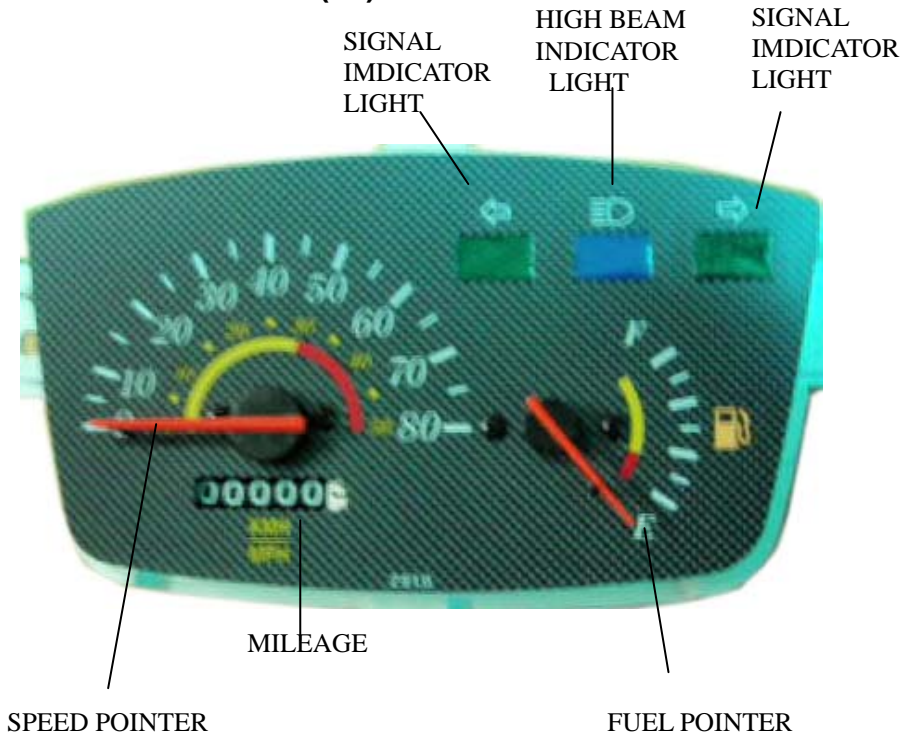
NOMENCLATURE & OPERATION

INSTRUMENT PANEL(2T)



NOMENCLATURE & OPERATION

INSTRUMENT PANEL(4T)



NOMENCLATURE & OPERATION

INSTRUMENTPANEL

50/100 2T

SPEED POINTER

SIGNAL
INDICATOR LIGHT

OIL INDICATOR
LIGHT

FUEL POINTER



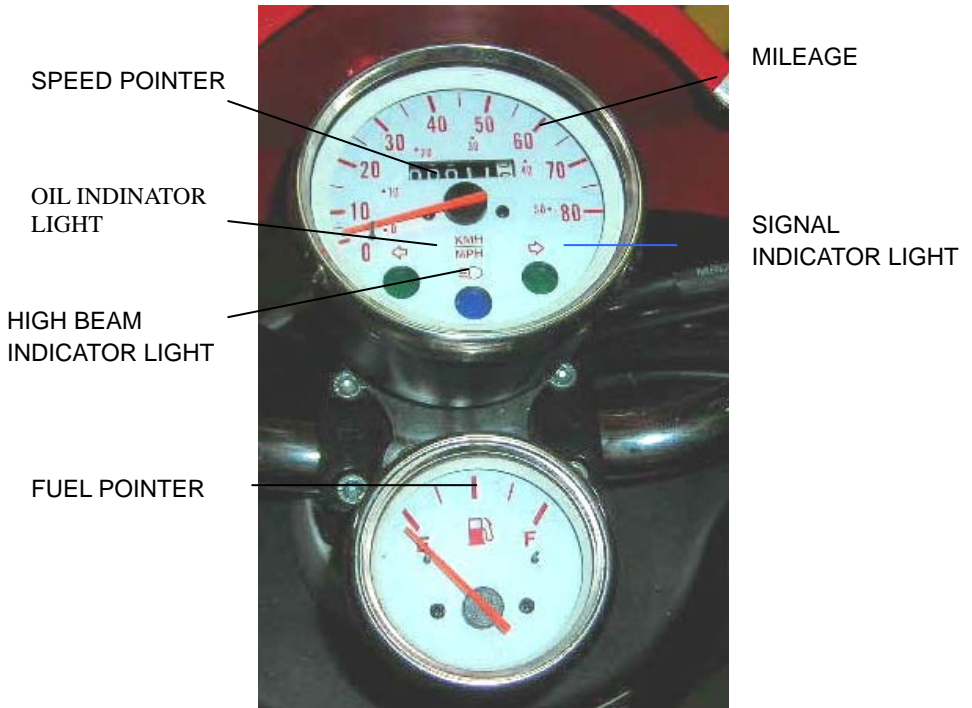
MILEAGE

SIGNAL
INDICATOR LIGHT

NOMENCLATURE & OPERATION

INSTRUMENTPANEL

50 4T



BATTERY REPLACEMENT

1. PLEASE USE A SUITABLE CHARGER, MAX OUTPUT : 0.4~1A. TOO MUCH AMPERES WILL DAMAGE THE BATTERY. WE SUGGEST TO ASK THE DEALER DO THE BATTERY CHARGING.
2. WHEN CONNECTING THE BATTERY, PLEASE CONNECT THE RED WIRE WITH THE MARK (+) AND THE BLACK WIRE WITH THE MARK (-) OF THE BATTERY, PLEASE NOTE, CONNECT RED WIRE (+) FIRST, THEN THE BLACK WIRE (-).
3. INSTRUCTIONS FOR REPALCING THE OLD BATTERY WITH A NEW ONE :

WARNING:

- ① PLEASE USE THE SAME TYPE OF BATTERY (3AH,YTX4L-BS)
- ② PLEASE READ THE INSTRUCTIONS CAREFULLY (ATTACHED WITH NEW BATTERY) FOR HANDLING BATTERY AND THE ELECTROLYTE.
- ③ THE BATTERY RELEASES EXPLOSIVE GASES, PROHIBIT TO CLOSE TO SPARKS, FLAMES OR CIGARETTES.
- ④ WHEN CHARGING OR USING THE BATTERY IN A CLOSED LOCATION, MAKE SURE THAT THE VENTILATION IS GOOD.
- ⑤ THE ELECTROLYTE CONTAINS SULFURIC ACID, DON'T SPILL IT ON SKIN, CLOTHES, OR EYES.
- ⑥ IF THE ELECTROLYTE SPILLS ON THE SKIN OR CLOTHS, PLEASE WASH WITH WATER AND SOAP IMMEDIATELY.
- ⑦ IF THE ELECTROLYTE GETS INTO YOUR EYES, FLUSH THOROUGHLY WITH WATER AND CALL FOR A DOCTOR RIGHT AWAY.
- ⑧ BEFORE THROWING AWAY THE ELECTROLYTE CONTAINER, PLEASE WASH IT UP WITH WATER OR NEUTRALIZE THE ACID SO AS TO AVOID ANY HARMS ON OTHERS.
- ⑨ MARK SURE THAT THE AIR VENT HOSE IS PROPERLY AT PLACE AND WITHOUT BLOCKING OR PINCHING.
- ⑩ KEEP OUT OF REACH OF CHILDREN.



1. SEAT LOCK

- ① THE KEY SAME AS THE MAIN SWITCH KEY.
- ② INSERT THE KEY AND TURN RIGHT, THE SEAT WILL BE OPEN INSTANTLY.
- ③ WHEN PUSH DOWN THE SEAT COVER, THE SEAT WILL BE LOCKED AUTOMATICALLY.
- ATTN!** ④ PLEASE DO NOT LEAVE THE KEY INSIDE THE COMRPATMENT; OTHERWISE THERE IS NO WAY TO TAKE THE KEY OUT.
- ⑤ PLEASE ALWAYS PUT ON THE HELMET FOR YOUR OWN SAFETY.



EC 50/100



EC 125



US





1. LH HANDLE BAR SWITCH

① SIGNAL LAMP SWITCH

↷ : RIGHT TURN SIGNAL LAMP

↶ : LEFT TURN SIGNAL LAMP

②  : LOW BEAM

 : HI BEAM

③ REAR BRAKE LEVER

WHEN START THE ENGINE, THE REAR BRAKE LEVER MUST BE HELD TIGHTLY.

④ HORN


WILL SOUND OFF WHEN PUSH.

2. RIGHT HANDLE BAR SWITCH

① HEAD LAMP SWITCH (EC)

 : HAND LAMP ON

• : HAND LAMP OFF

 AT THIS POSITION, POSITION LIGHT AND

①-1 EMERGENCY STOP SWITCH (US)

 : ENGINE RUNNING

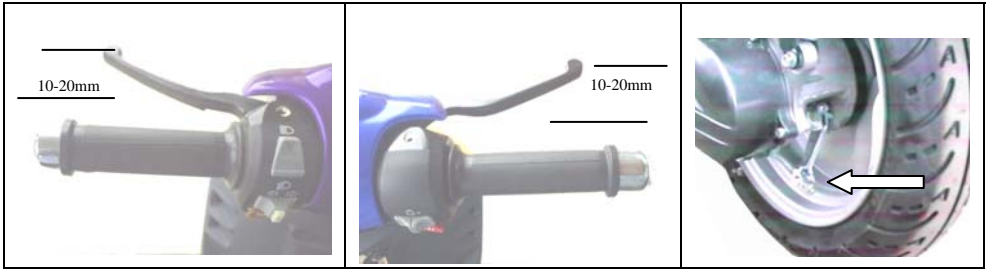
 : ENGINE STOP

② ELECTRIC START

SWITCH THE KEY TO "ON", KEEP THE BRAKE LEVER HELD AND THEN PUSH THE BUTTON ONCE AND THE ENGINE WILL RUN, IT IS FORBIDDEN TO PUSH THE ELECTRIC START AGAIN WHILE THE ENGINE IS RUNNING, IT WILL EASILY DAMAGE THE STARTING MECHANISM.

③ FRONT BRAKE LEVER

④ THROTTLE GRIP TURNED, THE FUEL WILL FOLLOW TO ADJUST.



BRAKE INSTRUCTIONS

1. BEFORE BRAKING, RELEASE THE THROTTLE GRIP AND APPLY THE FRONT AND REAR BRAKES GRADUALLY IN ORDER TO INCREASE BRAKE EFFICIENCY.
2. AVOID SUDDEN BRAKING, OR THE SCOOTER WILL SKIP OR OVERTURN.
3. BRAKING CAN BE EXTREMELY DIFFICULT WHILE RIDING ON THE METAL SURFACES, CONSTRUCTION SITES, MAN-HOLE COVERS, TRAMP RAILS AND WET ROADS, PLEASE SLOW DOWN AND PAY SPECIAL ATTENTION WHILE APPLYING BRAKE UNDER THESE CONDITIONS.
4. WHEN RIDING UPHILL OR DOWNHILL, IT MAY BE SOMEWHAT DIFFICULT TO APPLY BRAKE, SO PLEASE REDUCE SPEED ACCORDINGLY.
5. CHECK FOR CORRECT FREE CLEARANCE IN THE FRONT AND REAR BRAKE LEVER AS SHOWN IN THE PICTURE, LEFT HAND LEVER (FOR REAR BRAKE) 10~20mm. RIGHT HAND LEVER (FOR FRONT BRAKE) 10~20mm, IF THE FREE CLEARANCE IS INCORRECT, THE FRONT BRAKE (DISC) MUST BE ADJUSTED BY AN AUTHORIZED DEALER. THE REAR BRAKE (DRUM) CAN BE ADJUSTED BY TURNING THE NUT NEAR THE REAR WHEEL COWER LH SIDE, CLOCKWISE-BRAKE. WILL BE RELEASED.
6. IF PULLING THE BRAKE LEVERS TO THE END, NO BRAKING IS RESPONDED, IT MEANS THAT SOMETHING IS WRONG WITH THE SYSTEM, PLEASE IMMEDIATELY TAKE THE VEHICLE TO THE NEARBY DEALER FOR DETAILED INSPECTION.



INSPECTION OF BRAKE FLUID

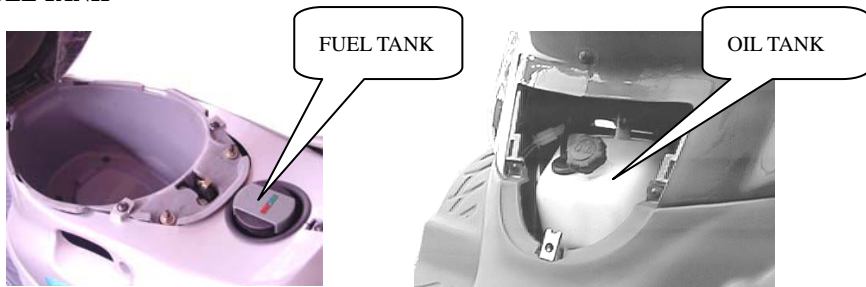
1. CHECK THE BRAKE FLUID LEVEL. IF IT IS BELOW THE LOWER SCALE, PLEASE REFILL BRAKE FLUID IMMEDIATELY.
2. ALWAYS USE DOT #3 OR DOT #4 BRAKE FLUIDS.
- ☆ 3. WHEN RIDING WITH LOWER SCALE BRAKE FLUID, THE BRAKE MAY DISFUNCTION.
- ☆ 4. IF UNDESIGNATED BRAKE FLUID IS USED, THE BRAKE MAY FAIL DUE TO DIFFERENT CHEMICAL REACTIONS DERIVED FROM OTHER BRAND PRODUCTS.
- ☆ 5. IF BEAKE FLUID SPILLS, PLEASE WIPE IT OUT WITH DRY CLOTHES, OR THE OIL WILL CAUSE ABRASION ON THE PLE ASTIC PARTS.
- ☆ 6. WHEN REFILL THE BRAKE FLUID, NEVERR ALLOW WATER TO GET INTO THE MASTER CYLINDER, OR AIR-LOCK EFFECT WILL EMERGE AND THE BRAKE MAY DISFUNCITON.

COMPARTMENT AND REAR CARRIER



- ☆ 1. THE MAXIMUM COMPARTMENT LOAD IS 10 KILOGRAMS.
- ☆ 2. NEVER PUT INFLAMMABLES OR LOW HEAT-RESISTING ITEMS IN THE COMPARTMENT.
- 3. NEVER PUT EASILY BROKEN ITEMS IN THE COMPARTMENT.
- 4. NEVER PUT VALUABLES IN THE COMPARTMENT.
- 5. BEFORE RIDING, MAKE SURE THE SEAT COVER IS SECURELY LOCKED.
- 6. NEVER PUT ANY GASOLINE OR OIL IN THE COMPARTMENT.
- 7. ALWAYS KEEP THE COMPARTMENT DRY, EVEN AFTER WASHING UP.
- 8. PLEASE CLEAN WITH A VACUUM-CLEANER.
- ☆ 9 THE MAXIMUM LOAD FOR REAR CARRIER IS 3 KILOGRAMS.

FUEL TANK



1. WHEN THE FUEL INDICATOR IS ON “E” POSITION, YOU SHALL REFILL THE TANK IMMEDIATELY.
2. THE FUEL INJET IS UNDER THE SEAT.
3. PUSH THE CAP ON BOTH SIDE TO OPEN THE CAP.
4. AFTER REFILL, MAKE SURE THE CAP IS LOCKED.
5. ALWAYS USE UNLEADED GASOLINE.
6. DON’T OVERFILL GASOLINE.
7. LOCATE THE CAP INTO CORRECT POSITION AND PRESS DOWN. THE CHECK SCREEN SHOWS GREEN FOR GOOD SEAL OF THE CAP.

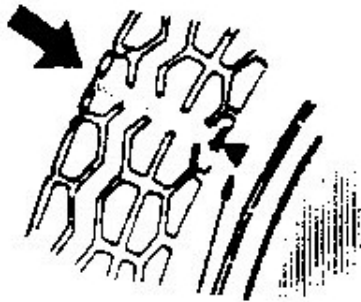
WARNING!

SINCE GASOLINE IS INFLAMMABLE, PLEASE DO NOT SMOKE AND GET CLOSE TO FIRE AND ALSO TURN OFF THE ENGINE WHEN YOU PUMP THE GASOLINE IN AN AIRY SPACE. IF YOU HAPPEN TO INHALE TOO MUCH GAS OR SWALLOW GASOLINE, IMMEDIATELY CALL FOR A DOCTOR.

OIL TANK

1. IF THE OIL WARNING LIGHT IN THE DASHBOARD IS ON WHEN RIDING, IT IS A WARNING SIGN THAT THE OIL WILL RUN OUT SOON, REFILL THE TANK WITH 2-STROKE OIL ASAP.
2. OPEN THE CENTER COVER, AND RELEASE THE OIL TANK’S CAP FOR REFILL.
3. DO NOT LET THE OIL TANK BECOME EMPTY, OTHERWISE THE ENGINE WILL EASILY BREAK.

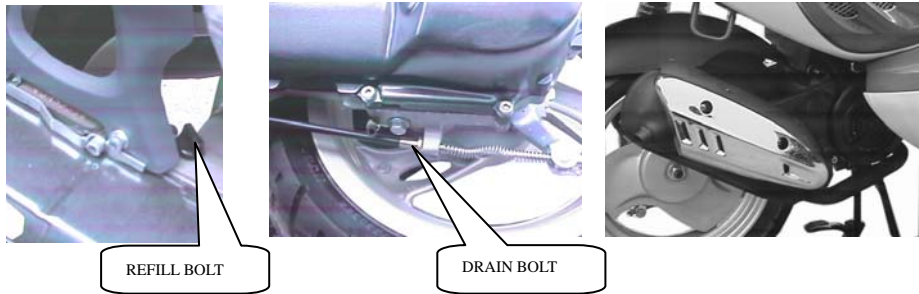
TIRE



Wear indicator

1. TIRE PRESSURE AFFECTS RIDING PERFORMANCE, APPROPRIATE PRESSURE WILL MAKE RIDING SMOOTHER.
2. CHECK FOR ANY CRACK OR HEAVY WORN-OUT THEN REPLACE IT WITH NEW ONES, IF WORN-OUT EXCEEDS THE LIMIT.
3. FRONT TIRE PRESSURE : 2.0 kgf/cm^2 , REAR TIRE PRESSURE : 2.25 kgf/cm^2
FRONT TIRE PRESSURE : 1.5 kgf/cm^2 , REAR TIRE PRESSURE : 1.75 kgf/cm^2
FRONT TIRE PRESSURE : 1.25 kgf/cm^2 , REAR TIRE PRESSURE : 1.5 kgf/cm^2
4. SINCE THE SCOOTER IS DESIGNED WITH TUBELESS TIRES, PLEASE REPAIR THE TIRE SURFACE DIRECTLY WHEN PRICKED BY SHARP THORNS OR ARTICLES.

GEAR OIL'S REPLACEMENT



1. CHANGE OF GEAR OIL SHOULD BE PERFORMED AFTER THE FIRST 1000 KILOMETERS RIDING , THEN OIL SHOULD BE CHANGED EVERY 5000 KILOMETERS.
2. GEAR LUBRICANT CODE SAE 85W/90.
3. GEAR LUBRICANT INLET LOCATES AT THE LEFT HAND SIDE OF REAR WHEEL AND THE UPPER OF CRANKCASE.
4. CHANGE OF THE GEAR OIL SHOULD BE OPERATED BY THE **ADLY** DEALER.

MUFFLER :

ATTN ! AFTER HAVING OPERATED THE VEHICLE FOR SOME TIME, MUFFLER TEMPERATURE WILL REACH AT HIGHER DEGREE, PLEASE PARK THE SCOOTER PORPERLY AND KEEP AWAY FROM THE PEDESTRIANS AND CHILDREN IN ORDER TO AVOID BURN INCIDENT.

PREVIOUSLY INSPECTION

FOR THE SAKE OF SAFETY AND TO PREVENT VEHICLE DAMAGE, THE PREVIOUSLY INSPECTION IS ABSOLUTELY REQUIRED.

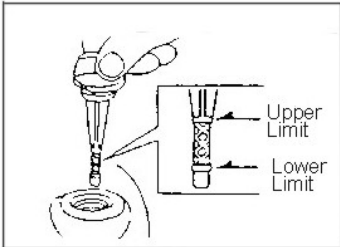
CAUTION:

THE TEMPERATURE OF ENGINE AND EXHAUST MUFFLE IS VERY HIGH. BE CAREFUL WHILE CHECKING ENGINE OIL TO AVOID BURNS.

A. ENGINE OIL CHECK · REFILLING & CHANGE

CHECK ENGINE OIL

1. PLACE THE VEHICLE ON ITS MAIN STAND. TAKE OUT THE OIL GAUGE AND WIPE IT CLEAN.
2. INSERT THE OIL GAUGE INTO THE ENGINE OIL. (DON'T LOCK IT)
3. TAKE OUT THE OIL GAUGE AND CHECK THE OIL LEVEL. IF IT IS CLOSE TO THE LOWER LEVEL, REFILL THE ENGINE OIL TO THE UPPER LEVEL.



CAUTION:

In order to maintain the excellent performance of engine, check the engine oil level every 500KM.

ENGINE OIL CHANGE

CHANGE ENGINE OIL AT FIRST 300 KM AND THEN CHANGE AT EVERY 2000KM.

ENGINE OIL CAPACITY : 0.7 LITER

CHANGE METHOD:

1. REMOVE THE OIL GAUGE.
2. REMOVE THE OIL DRAIN SCREW AND DRAIN THE OIL.(THE OIL WILL DRAIN MORE EASILY WHEN THE ENGINE IS WARM)
3. REMOVE THE SCREW OF OIL FILTER.
4. REMOVE AND CLEAN THE OIL FILTER THEN REINSTALL IT.
5. WIPE THE DRAIN SCREW CLEAN AND REINSTALL IT.
6. REFILL FRESH ENGINE THE OIL FOR 0.7 LITER.
7. FIRMLY TIGHTEN THE OIL GAUGE.
8. WARM UP THE ENGINE AND CHECK THE OIL LEVEL AGAIN AFTER THE ENGINE IS STOPPED FOR 10~20 SECONDS.

CAUTION:

1. USE THE 10W/40 4-STROKE ENGINE OIL. THE OIL LEVEL SHALL NOT EXCEED THE UPPER LIMIT.
2. WHEN THE VEHICLE OFTEN RIDDEN ON MACADAM ROAD ∙ RIDDEN FOR SHORT DISTANCE ∙ FOR

GEAR OIL CHANGE

Change recommended oil (SAE#90) 300km and then change at every 6 months or 5000KM.

The total capacity is 110c.c.

Change method :

1. Place the vehicle on its main stand on level ground.
2. Remove gear oil drain plug.
3. The remaining oil in gear box will drain easily when the engine is warm.
4. Clean the drain plug and reinstall it.
5. Refill gear oil into the gear box slowly.
6. Firmly tighten the filter screw to avoid oil leakage.



Gear oil fill

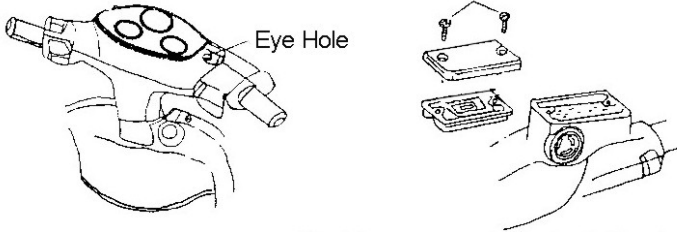
Gear oil drain plug

PREVIOUSLY INSPECTION

FRONT BRAKE FLUID LEVEL

CHECK THE FLUID LEVEL :

MAKE THE HANDLEBAR STRAIGHT AND CHECK THE FLUID BRAKE FLUID TANK FOR BRAKE FLUID LEVEL WHICH SHALL BE KEEP BETWEEN THE UPPER AND LOWER LIMITS.



BRAKE FLUID REFILLING :

1. MAKE THE HANDLEBAR STRAIGHT AND THEN REMOVE 2 LOCKING SCREW ON THE BRAKE FLUID TANK AND TAKE OFF THE COVER.
2. ADD RECOMMENDED BRAKE FLUID DOT-3 INTO THE TANK UNTIL THE FLUID LEVEL REACHES UPPER LIMIT THEN PUT ON THE COVER AND TIGHTEN THE 2 LOCKING SCREW.

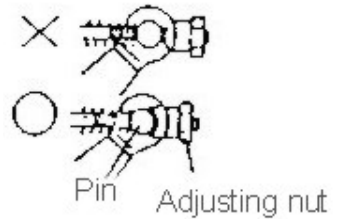
REAR WHEEL BRAKE ADJUSTMENT

CHECK BRAKE LEVER FOR EFFECTIVE BRAKING, FREE PLAY TO BRAKE SHOULD BE BETWEEN 1~2 cm .



Clcarance becomes small

Clcarance becomes big



CAUTION:

1. SCREW GROOVE MUST BE ALIGNED WITH LOCK POSITION AFTER ADJUSTMENT, ANY SLIGHT DEVIATION MAY RESULT RESULT IN BRAKING PLAY CHANGE CAUSE DANGER AS BRAKE APPLIED.

CHECK BRAKE LIGHT :

TURN MAIN SWITCH TO “ON” POSITION. APPLY BOTH BRAKE/LEVERS SEPARATELY FOR FRONT AND REAR WHEELS

TO SEE IT BRAKE LIGHT FUNCTIONS NORMALLY.

INSPECTION OF SPARK PLUG



1. DISCONNECT THE H.T. COIL FROM THE SPARK PLUG CAP AND TWIST COUNTERCLOCKWISE, THE SPARK PLUG WILL COME OUT.
2. WHEN RE-ASSEMBLING, MAKE SURE THAT SPARK PLUG WILL BE SECURELY GUIDED INTO THE THREADED HOLE.
3. STANDARD SPARK PLUG : (NGK BP7HS/ BPR7HS)
4. THE SPARK PLUG MUST BE PERIODICALLY REMOVED AND CLEANED UP, IN ORDER TO KEEP PROPER IGNITION CONDITION.
5. BEFORE INSTALLING THE SPARK PLUG, MEASURE THE ELECTRODE GAP WITH A GAUGE AND ADJUST THE GAP TO THE PROPER SPAACE OF 0.6~0.7mm.
6. WHEN INSTALLING THE SPARK PLUG, CLEAN THE WASHER SURFACE , THEN TIGHTEN THE PLUG WITH A TORQUE OF 20N-M (2.0 KGF-M)

PRE-OPERATION CHECK

BEFORE OPERATING THE SCOOTER, THE FOLLOWING POINTS MUST BE FOLLOWED

INSPECTION ITEMS	DESCRIPTIONS
FRONT BRAKE	CHECK WHETHER THE BRAKE ARE NORMAL.
REAR BRAKE	
TIRE	1. CHECK WHETHER AIR PRESSURE IS PROPER 2. CHECK WHETHER TIRES ARE DAMAGED OR CRACKED
LAMP	1.CHECK WHETHER BRAKE LAMP FUNCTIONS NORMALLY 2.CHECK WHETHER SIGNAL LIGHTS FUNCTION NORMALLY CHECK WHETHER ALL THE LENS ARE CLEAN AND SHINY
REAR MIRROR	1.CHECK WHETHER REFLECTING IMAGES ARE CLEAR 2.CHECK WHETHER GLASS ARE CLEAN AND SHINY

LUBRICATION OIL

WHEN THE OIL LIGHT IS ON, IT MEANS THAT YOU HAVE TO ADD THE DESIGNATED **ADLY** MOTOR OIL ASAP, AND THEN THE LIGHT WILL GO OFF AFTER REFILL.

SUMMARY OF INSTRUCTIONS FOR LUBRICATION

ITEM	I ST TIME	2 ND TIME AND AFTER	LUBRICANT
① REAR BRAKE CAM		3,000KM	GREASE
② SPEEDOMETER GEAR BOX	3,000KM	4,000KM	GREASE
③ BEARING.(FRONT & REAR WHEEL)	6,000KM	3,000KM	GREASE
④ BEARING.(HANDLE BAR)		6,000KM	GREASE
⑤ SUSPENSION PIVOT	1,500KM	3,000KM	GREASE
⑥ BRAKE AND THROTTLE CABLE		3,000KM	GREASE
⑦ GEAR BOX	1,000KM	5,000KM	OIL

BRAND NEW PERIOD :

1. TAKE GOOD CARE OF YOUR NEW VEHICLE WITHIN THE FIRST 1000 KILOMETERS AND OPERATE IT SMOOTHLY. IN ORDER TO MAINTAIN EVERY SPARE PART IN PROPER CONDITION, TRY NOT TO MAKE FULL ACCELERATION.
2. WHEN REPLACE NEW CYLINDER, PISTON, AND CRAFTCASE, PLEASE AVOID FULL SPEED RIDING.
3. AVOID FULL ACCELERATION WHEN THE SCOOTER IS NOT IN RUNING CONDITION.

PERIODICAL CHENK & SERVICES

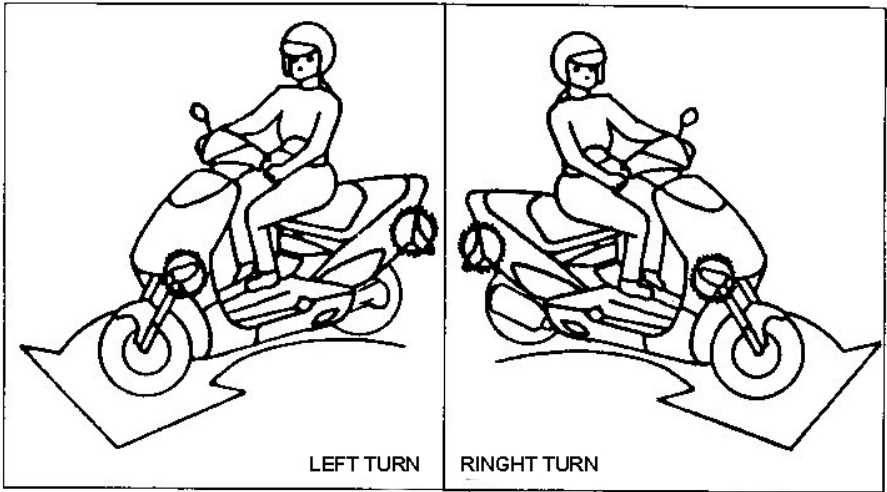
ITEM	Regular Service Mileage (KM)												
	300	1000	2000	3000	4000	5000	6000	7000	8000	9000	10000	11000	12000
Engine Oil	R		R		R		R		R		R		R
Oil Filter	C		C		C		C		C		C		C
Fuel Filter						R					R		
Brake System		I	I	I	I	I	I	I	I	I	I	I	I
Valve Gap		A			A				A				A
Drive Belt									I				
Air Cleaner	Change element at every 5000 Km or if necessary												
Nuts, Bolts	T					T					T		
Gear Oil	R					R					R		
Carburetor					I				I				I
Spark Plug	Clean at every 2000 Km or if necessary												
Ignition Timing		A			A				A				A
Cam Chain		A			A				A				A
Battery		I	I	I	I	I	I	I	I	I	I	I	I
Clutch	A					A					A		
Exhaust Density	Often test and adjust to avoid air pollution												

Note : 1. R: Replace, A: Adjust, C: Clean, T: Tighten, I: Inspect and clean

2. When exceeding the listed mileage, perform maintenance according to the listed intervals.

. SAFE RIDING TIPS :

1. GIVE A CLEAR SIGNAL AT THE FOLLOWING INSTANCES :



SAFE RIDING TIPS.

1. BRAKING MAY BE DIFFICULT ON WET ROADS, SO PLEASE AVOID SUDDEN BRAKE, OR THE SCOOTER WILL SLIP OR OVERTURN.
2. ALWAYS SLOW DOWN WHEN YOU ARE APPROACHING A TURN.
3. WHEN PASSING BY A CAR, BE AWARE OF UNEXPECTED DOOR-OPENING AND ALWAYS KEEP ALERT.
4. WHEN PASSING CONSTRUCTION SITES COVERED WITH METAL SURFACES, ALWAYS RIDE CAREFULLY.
5. RIGHT AFTER WASHING, THE BRAKING LINING MAY BE STILL WET, SO INSPECT THE BRAKE EFFICIENCY BEFORE RIDING.
6. ALWAYS PUT ON BRIGHT OUTFITS, LONG PANTS, GLOVES AND HELMET WHILE RIDING.
7. NEVER CARRY TOO MUCH LUGGAGE, OR THE RIDING WILL BE UNSTABLE. IF NECESSARY, SECURE THE LUGGEAGE RACK WITH A CORD.
8. ALWAYS BE WARE OF LOCAL SAFETY REGULATIONS.

VIN NUMBER AND SERVICE RECORD

PLEASE RECORD THE FRAME AND ENGINE NUMBER FOR REFERENCE.

THE FRAME NUMBER (VIN) IS STAMPED IN THE FRONT OF VEHICLE.

TBSS/ST

FRAME NO. RFL

FRAME NUMBER



THE ENGINE NUMBER IS ENGRAVED ON TOP OF LEFT CRANKCASE.

ENGINE NO. _____

ENGINE NUMBER



FRAME NO. RFL

INSPECTION AND SERVICE

DATE PURCHASED: _____ AUTH.

DEALER: _____

INSPECTION(1)
DATE: _____

DEALER

INSPECTION(2)
DATE: _____

DEALER

INSPECTION(3)
DATE: _____

DEALER

INSPECTION(4)
DATE: _____

DEALER

INSPECTION(5)
DATE: _____

DEALER

INSPECTION(6)
DATE: _____

DEALER

INSPECTION AND SERVICE

INSPECTION(7)
DATE: _____

DEALER

INSPECTION(8)
DATE: _____

DEALER

INSPECTION(9)
DATE: _____

DEALER

INSPECTION(10)
DATE: _____

DEALER

INSPECTION(11)
DATE: _____

DEALER

INSPECTION(12)
DATE: _____

DEALER

IMPORTANT NOTE

HEREWITH WE ADVISE THE USER THAT WHATEVER MODIFICATIONS TO THE ENGINE OR TO THE PARTS WITH THE PURPOSE OF INCREASING EITHER THE SPEED OR THE HORSE POWER, ARE STRICTLY PROHIBITED BY THE LAWS.

PLEASE ALWAYS CONSULT THE PROFESSIONALS AT THE DEALER'S STATION ABOUT ANY MODIFICATIONS TO ENGINE OR PARTS.

BEFORE UTILIZING THE SCOOTER, BE SURE THAT YOU HAVE VALID DRIVER'S LICENSE AND THE SCOOTER HAS BEEN HOMOLOGATED BY THE LOCAL TRANSPORTATION AUTHORITIES OF COURSE, INSPECT ALL PARTS BEFORE YOU ARE ON THE ROAD.

FURTHERMORE, WE LIKE TO INFORM THE USER THAT ANY MODIFICATION TO THE SCOOTER WITHOUT AUTHORIZATION MAY AFFECT THE VALIDITY OF YOUR INSURANCE POLICIES OR YOUR LICENSE MAY BE SUSPENDED. IF THE USER HAS ANY QUESTIONS IN REGARDS WITH PARTS OR THE SCOOTER AS A WHOLE, PLEASE CONSULT OUR DISTRIBUTOR OR AGENT FOR MORE DETAILS.