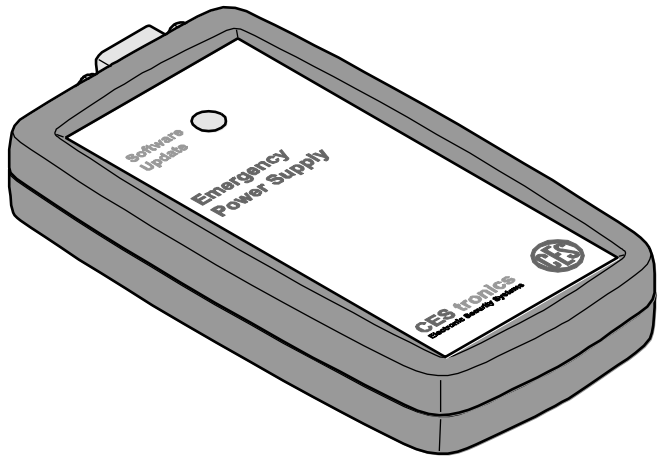


# Emergency Power Supply for the OMEGA ACTIVE-System

## Operating Instructions



## Preface

These Operating Instructions will help you using the Emergency Power Supply

- as intended,
- safely, and
- advantageously.

Any person who

- operates or
- disposes of

the Emergency Power Supply must have read and understood the entire contents of these Operating Instructions and other required user manuals, operating and assembly instructions.


Depending on the configuration of your locking system, you may require other user manuals, operating or fitting instructions for an overall understanding of the system. These Operating Instructions should always be kept within your reach.

## Notes on the layout

In these Operating Instructions, a number of elements are highlighted with defined layout features so you can identify at a glance whether a passage contains

standard text,

- a list, or
- ▶ individual steps in a sequence of actions.


 Notes highlighted with this symbol contain additional information on the efficient use.

**Contents**

Preface..... 2

Notes on the layout ..... 2

For your safety..... 4

 Basic safety instructions ..... 4

    Notes on the handling of batteries ..... 6

    Explanation of the safety notes ..... 7

    Intended use ..... 7

Description ..... 8

Scope of delivery ..... 9

Operation ..... 10

    Inserting the batteries..... 10

    Performing the emergency opening..... 11

    Updating the firmware ..... 15

Service and maintenance ..... 19

Trouble shooting ..... 19

Disposal ..... 21

Technical data..... 22

Glossary ..... 23

Notes on the manufacturer's warranty ..... 24

## For your safety

### **Basic safety instructions**

Observe all warnings and notes in these Operating Instructions when you

- assemble,
- program, and
- use

components of the system.

To prevent danger to life and limb, the following safety instructions must be observed:

#### **Danger to life**

- Make sure that the effects of your programming do not expose any persons to any risk of injury or other hazards.
- Satisfy yourself that your programming translates into the desired function.
- Make sure that all system components work perfectly.

#### **Danger of explosion**

- Live parts of the system components may cause an explosion. Do not use any components of the system in potentially explosive atmospheres.
- The batteries of the Emergency Power Supply may get overheated if charged and may explode. Never charge the batteries.

#### **Danger of suffocation**

- Never allow children to play with packaging material and/or plastic bags. Keep plastic film and other packaging material out of reach of children.

## **Danger of poisoning**

Always keep the system components out of reach of children. There is a risk that children swallow small parts such as batteries or screws.

## **Danger of property damage**

To prevent property damage, the following safety instructions should be observed:

- Always have repairs performed by properly qualified personnel.
- Only use accessories and spare parts recommended by CESTronics.
- Do not drop the Emergency Power Supply on the floor, on hard surfaces or on hard objects.
- Protect the electronic parts of your system components against water and other liquids.
- The Emergency Power Supply contains highly sensitive electronic parts that may be damaged or destroyed through static charges. Do not disassemble the Emergency Power Supply in rooms with built up static charge.

## **Danger through environmental conditions**

- Do not use the Emergency Power Supply in corrosive atmospheres (chlorine, ammonia, lime water).
- Only use the Emergency Power Supply in rooms in which the humidity does not exceed 95%.
- Do not use the Emergency Power Supply in rooms with a high level of dust formation.
- Do not use the Emergency Power Supply near sources of heat.

## Notes on the handling of batteries

- Keep batteries out of reach of children. If a battery was swallowed, consult a physician without delay.
- Always insert new batteries. Never insert old and new batteries at the same time.
- Never mix the battery types. Always replace batteries by batteries of the same or an equivalent type.
- Before inserting the batteries, check that the terminals in the device and at the batteries are clean. Clean them if necessary.
- Observe the correct polarity (+/-) when inserting the batteries.
- Never attempt to recharge non-rechargeable batteries. There is a risk of explosion!
- Never short-circuit the batteries.
- Always store batteries at a cool, dry place. Direct heat may damage the batteries. Do not expose any battery-powered devices to strong sources of heat.
- Never throw any batteries into a fire.
- If you do not use your devices for a longer period, take out the batteries.
- Always remove leaked batteries immediately from the device. Clean the terminals before inserting new batteries. There is a danger of acid burns through battery acid!
- Remove flat batteries from the device.

## Explanation of the safety notes

These Operating Instructions include safety notes of the following types:

### ***ATTENTION***

**ATTENTION notes warn against possible property or environmental damage.**

## Intended use

The Emergency Power Supply is intended for the emergency opening of locking cylinders of the OMEGA ACTIVE system.

Any other use is considered to be improper and may result in property damage or even personal injury.

CEStronics GmbH does not accept any liability for any damage resulting from improper use.

## Description

The Emergency Power Supply serves for the emergency opening of locking cylinders of the OMEGA ACTIVE system in case of flat batteries. The Emergency Power Supply also allows you to update the firmware of your locking cylinders.

The Emergency Power Supply has its own power supply comprised of four commercial rechargeable or non-rechargeable AA batteries to supply locking cylinders with power. This power supply is sufficient for about thirty emergency opening operations.

For the emergency opening, the outside knob of the locking cylinder is opened slightly and the Emergency Power Supply is connected with the interface. The green LEDs of the locking cylinder will light up green to signal the connection with the Emergency Power Supply.

To open the locking cylinder, you need your authorized locking medium. Hold your locking medium in front of the locking cylinder and rotate the outside knob by at least one notch.

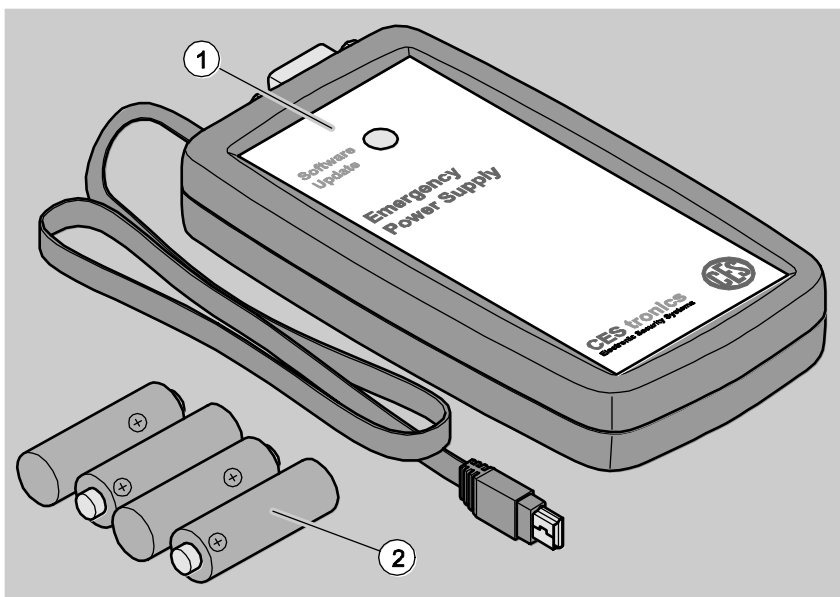
Without an authorized locking medium, the locking cylinder cannot be opened.

With the "OMEGA ACTIVE Firmware-Update" software tool you can transmit firmware updates from the PC into the locking cylinder via the RS 232 interface.



## Scope of delivery

- ▶ Before fitting and commissioning, please check the contents of the package and the scope of delivery.
- ▶ Check new devices for transport damage and inform your dealer promptly if any damage is found.



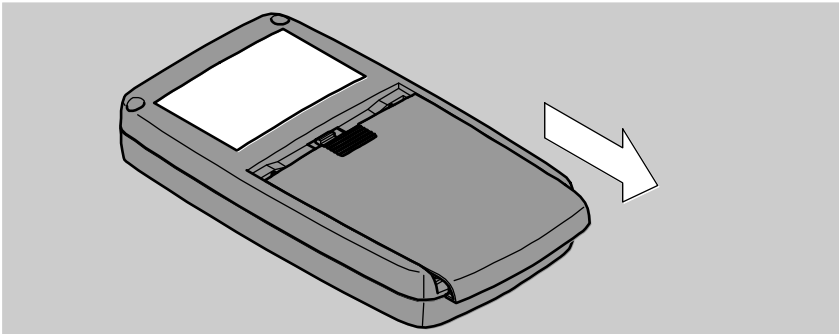
**1** Emergency Power Supply

**2** 4 batteries, type AA

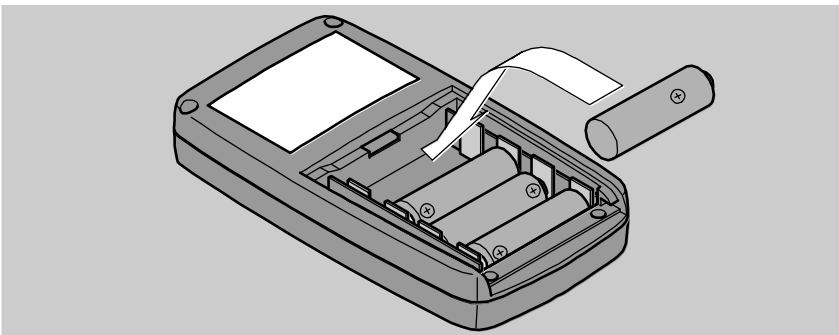
## Operation

### Inserting the batteries

- ▶ The four supplied batteries must be inserted into the Emergency Power Supply.
- ▶ For this purpose, remove the cover of the battery compartment on the rear of the Emergency Power Supply.



- ▶ Insert the four batteries into the battery compartment.
- ▶ Make sure that you insert them with the correct polarity.



- ▶ Push the cover again over the battery compartment.
- The Emergency Power Supply is now operative.

## Performing the emergency opening

### ***ATTENTION***

**After an emergency opening, the locking cylinder is no longer secured. In this case, you can no longer lock the locking cylinder from the outside. You can only lock the locking cylinder after you have inserted a new battery.**

- ▶ Always insert a new battery into the battery compartment of the locking cylinder after each emergency opening.

### ***ATTENTION***

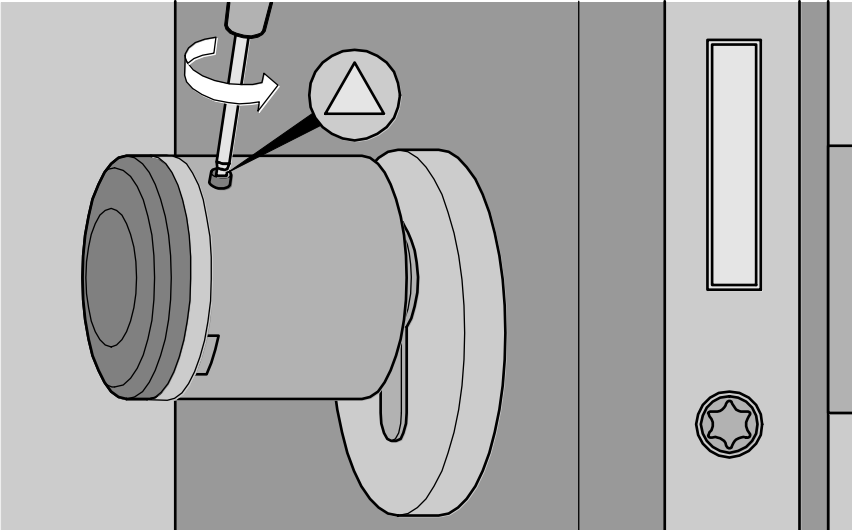
**When the module is pulled out of the outside knob, the connection cable attached to the reader may be damaged.**

- ▶ Always pull the module out of the outside knob slowly and carefully and for no more than ten centimetres.

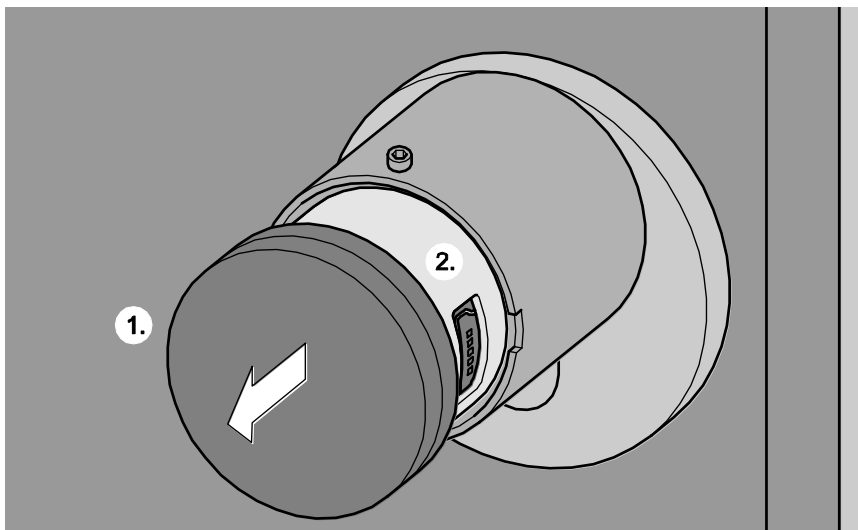
For an emergency opening of your locking cylinder, proceed as follows:

- Release the two opposite screws on the outside knob with the combination tool (three-square screwdriver).

These screws cannot be completely screwed out but will always be held in the outside knob.



- ▶ Pull the reader module out of the outside knob until you feel the stop (1.).

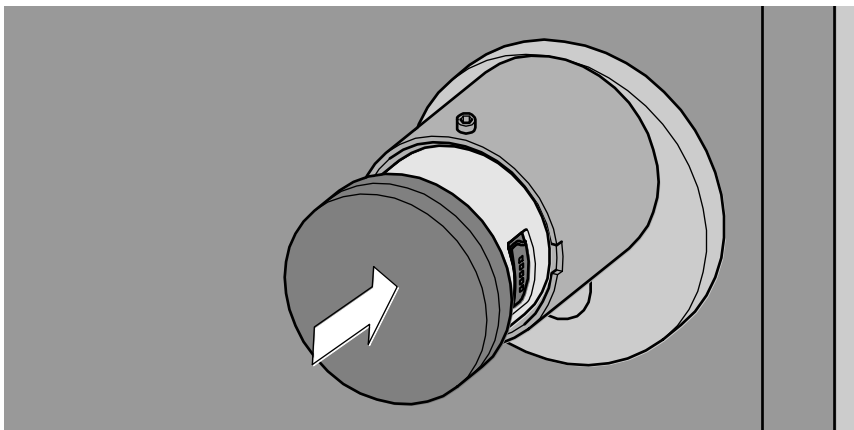


- ▶ Connect the Emergency Power Supply with the interface (2.) at the reader module.

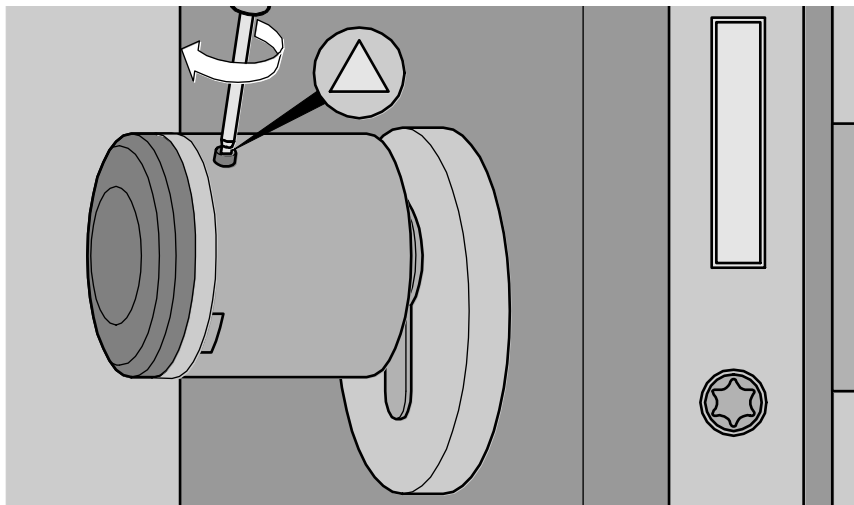
The LEDs in the reader module light up green to signal the connection with the Emergency Power Supply.

- ▶ Wait a couple of seconds before you continue.
- ▶ Use your authorized locking medium to open the door.
- ▶ Rotate the outside knob of the locking cylinder by at least one notch.
- ▶ After you have opened the door, disconnect the connection between the reader module and the Emergency Power Supply.
- ▶ Insert a new battery into the locking cylinder. Observe the notes in the operating instructions of your locking cylinder.

- Push the reader module back into the sleeve of the outside knob.



- To fasten the reader module, hand-tighten the two opposite screws with the combination tool (three-square screwdriver).



This completes the emergency opening.

## Updating the firmware

To transmit new firmware updates, you require a PC (option) with a free COM port.

Firmware updates are transmitted to the locking cylinder with the "OMEGA ACTIVE Firmware-Update" software.

### ***ATTENTION***

**If you separate the power supply during the update process, the update will not be transmitted and the process must be started anew.**

- ▶ Make sure that the connection between the locking cylinder and the Emergency Power Supply is not interrupted.
- ▶ Satisfy yourself that the batteries in the Emergency Power Supply still have sufficient capacity.

### ***ATTENTION***

**By a firmware update, all authorizations for the locking cylinder will be deleted.**

- ▶ After the successful firmware update, you must reprogram all authorizations for the locking cylinder concerned.

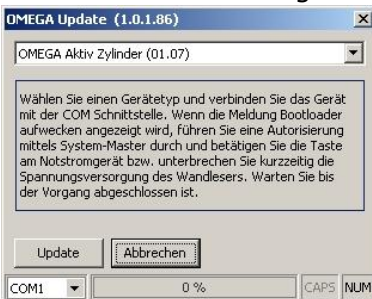
To transmit firmware updates with "OMEGA ACTIVE Firmware-Update" into the locking cylinder, proceed as follows:

Connect the Emergency Power Supply with a free COM port of your PC.

- ▶ Start the "OMEGA ACTIVE Firmware-Update" software on your PC, by selecting:
  - Start > Programs > OMEGA/OMEGA Active Firmware Update



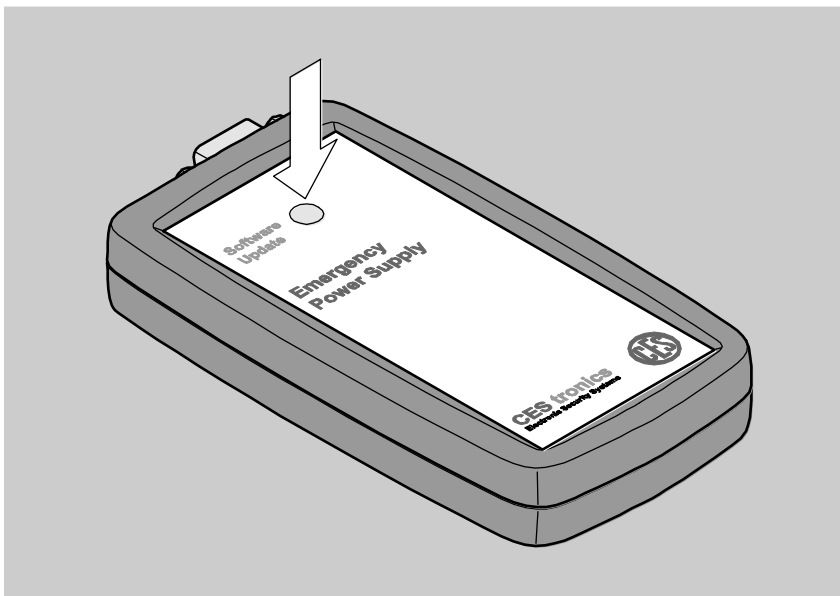
Wait until the following message appears.



- ▶ Select the device for which you want to perform the update.
- ▶ Select the COM port.
- ▶ Perform an authorization with your SYSTEM-MASTER.
- ▶ Connect the locking cylinder with the Emergency Power Supply.
- ▶ Click on the "Update" button.



- ▶ Push the "Software Update" button on your Emergency Power Supply.



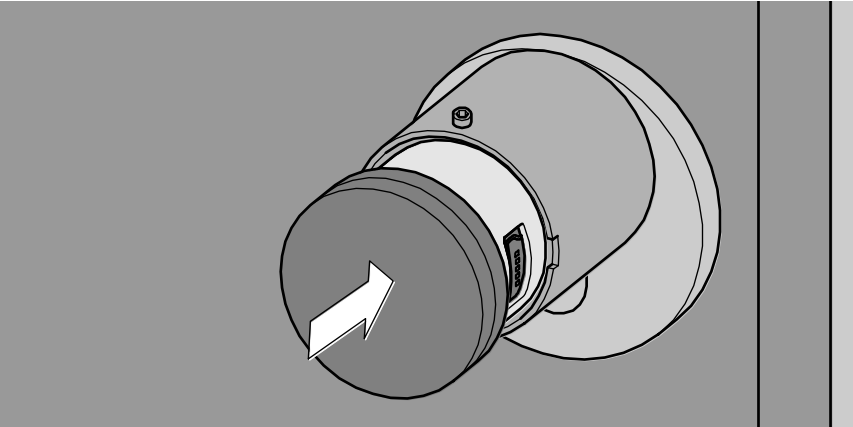
The update starts and the PC monitor shows the progress of the updating process.

After the update has been transmitted successfully, the following message appears:

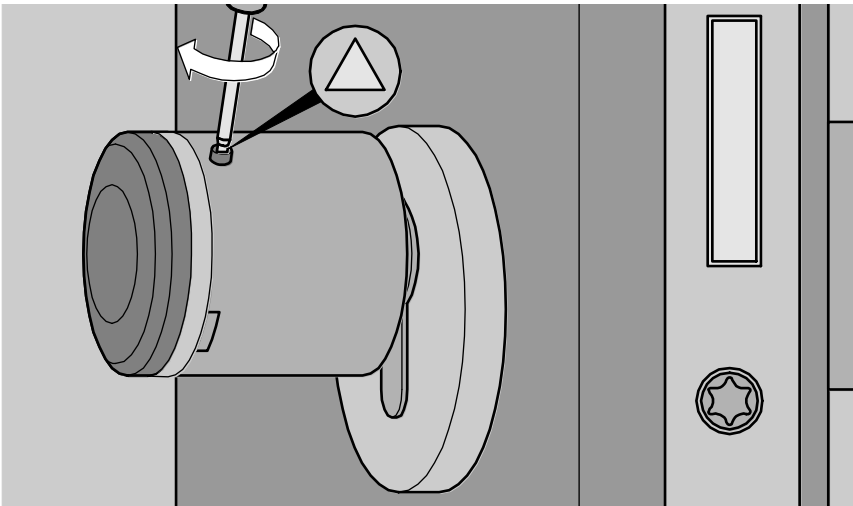


- ▶ Separate the connection between the locking cylinder and the Emergency Power Supply.
- ▶ Separate the connection between the Emergency Power Supply and your PC.

- ▶ Close the "OMEGA ACTIVE Firmware-Update" software.
- ▶ Push the reader module of the locking cylinder back into the sleeve of the outside knob.



- ▶ Hand-tighten the two opposite screws with the combination tool (three-square screwdriver).



This completes the firmware update.

## Service and maintenance

- ▶ Have the Emergency Power Supply serviced and its perfect functioning verified every six months by CEStronics or a CEStronics partner.
- ▶ Replace the batteries in line with a defined maintenance schedule for the Emergency Power Supply.
- ▶ Make sure you have replacement batteries ready in good time.

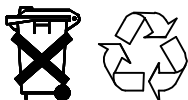
## Trouble shooting

Symptom	Possible cause and remedy
Emergency opening is not possible.	<p>The batteries of your Emergency Power Supply are flat.</p> <p>▶ Check the batteries of your Emergency Power Supply.</p>
	<p>Your locking medium is not authorized for the locking cylinder concerned.</p> <p>▶ Use the authorized locking medium for the locking cylinder concerned.</p>
	<p>The connection between the Emergency Power Supply and the locking cylinder is faulty.</p> <p>▶ Make sure that the connection has been properly established.</p>
Firmware update is not possible.	<p>The "OMEGA ACTIVE Firmware-Update" software is not configured correctly.</p> <p>▶ Ensure proper functioning of the software.</p>

<b>Symptom</b>	<b>Possible cause and remedy</b>
Firmware update is not possible.	<p>The SYSTEM-MASTER is not authorized for the locking cylinder concerned.</p> <p>► Use the SYSTEM-MASTER authorized for the locking cylinder concerned.</p>
	<p>The batteries of the Emergency Power Supply are flat.</p> <p>► Check the batteries of the Emergency Power Supply.</p>
	<p>Your COM port does not work properly.</p> <p>► Verify the functioning of your COM port.</p>

If the trouble still cannot be eliminated, please contact your CEStronics partner.

## Disposal



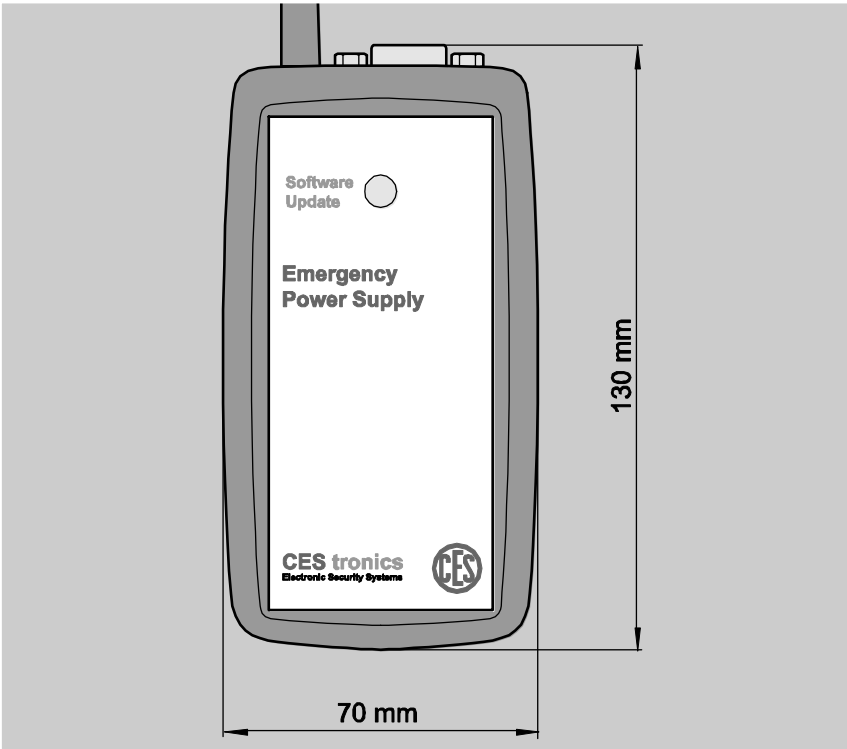
Neither the Emergency Power Supply nor any of its components may be discarded with the normal household waste. Ask your local authorities about recycling and/or proper disposal in line with environmental regulations.

Our packaging is made of environmentally friendly, reusable materials.

These are external packaging and inserts made of cardboard, inserts and protective film made of polypropylene (PE).

Please dispose of the packaging in an environmentally responsible manner through separate waste streams.

Technical data



Dimensions:	Length: approx.130 mm Width: approx. 70 mm Height: approx. 25 mm
Power supply:	4 × 1.5 V AA type batteries
Ports:	<ul style="list-style-type: none"><li>- 1 × plug for connection with the locking cylinder</li><li>- 1 × RS 232 for connection with COM port (SUB-D, 9-pole)</li></ul>
Length of connection cable:	Approx. 40 cm

## Glossary

<b>Emergency opening</b>	Opening of a locking cylinder in case of a flat battery. The required power is provided by the Emergency Power Supply.
<b>Firmware</b>	The "operating system" of your locking cylinder. To benefit from further developments in the firmware, an occasional update of the firmware is recommended.
<b>SYSTEM-MASTER</b>	The optional SYSTEM-MASTER is used to define the allocation to a locking system. The SYSTEM-MASTER grants all highest-level authorizations.

## Notes on the manufacturer's warranty

The manufacturer's warranty does not cover:

- damage to outer mechanical parts and damage resulting from normal wear and tear
- damage as a consequence of external events or influence
- damage as a consequence of improper operation
- damage as a consequence of excess voltage
- damage as a consequence of fire, water or smoke
- batteries.



The information and data contained in this document are subject to change without notice.

Without the express written permission by CESTronics, no part of this document may be copied or transmitted for any purpose.

© 2008 CESTronics, Velbert

November 2008

BRO 2214-001, V 1.2, 09/2012

CEStronics GmbH  
Friedrichstr. 243  
42551 Velbert, GERMANY  
Phone: +49 2051-204-0  
Fax: +49 2051-204-229  
[www.ces.eu](http://www.ces.eu)