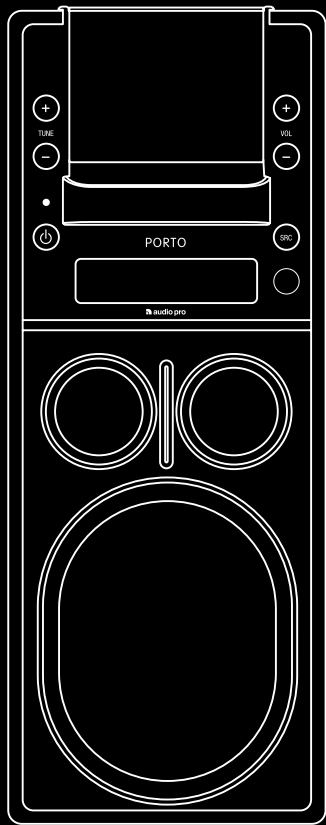
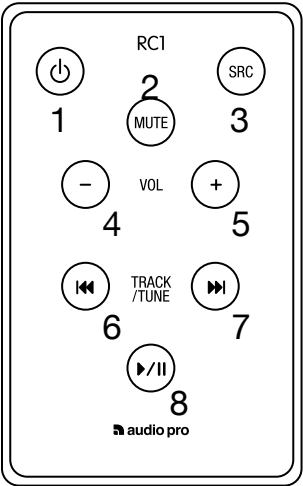
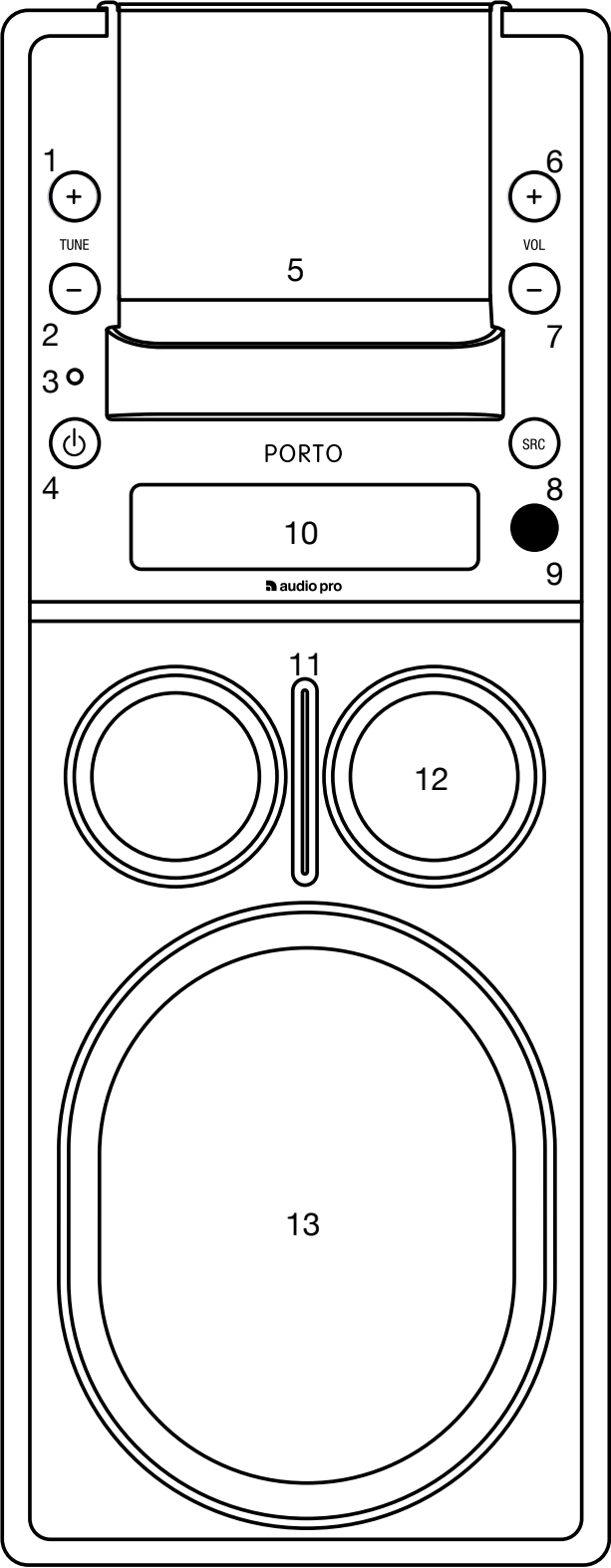
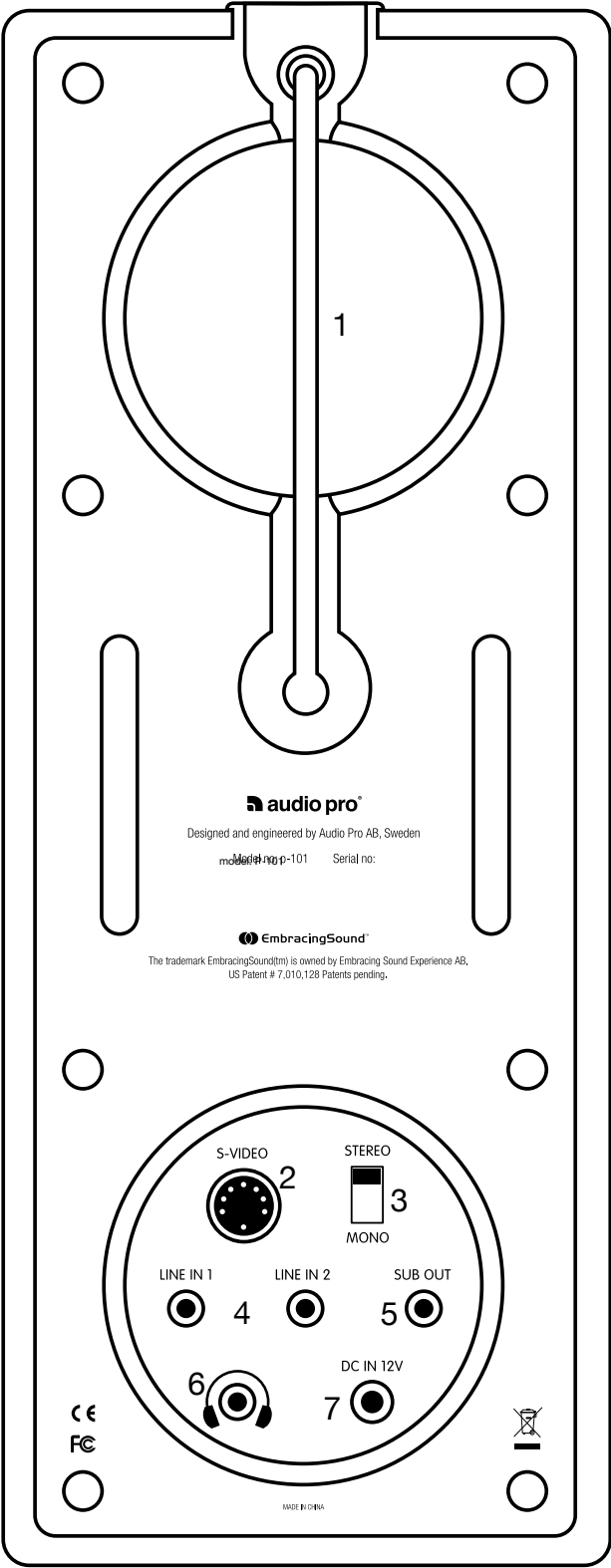


PORTO

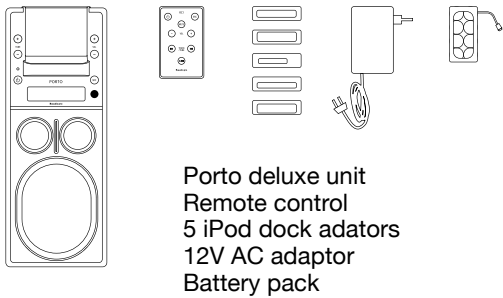


User manual





PACKAGE CONTENTS

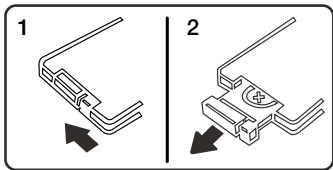


Supported iPod models:

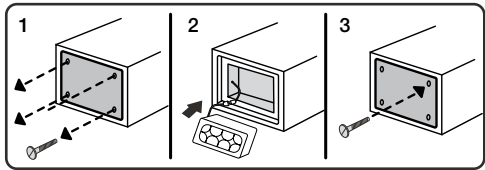
iPod nano (4 gen)	(2GB, 4GB)
iPod touch, 2gen	(40GB, 60GB)

NOTE:
The 5 special Audio Pro dock adaptors included have extra support for stability, but you can connect any iPod with dock connectors to Porto. Use Apple original dock adaptors.

Change remote battery



Change battery pack in Porto



NOTE:
When connecting the battery pack for the first time, please allow for a minimum 10 hours of charging to optimize battery duration.

SPECIFICATIONS

Audio
Amplifier: 2 x 7W + 1 x 12 W
SPL: 95dB / 1m
Frequency response: 70-16800Hz, +-3dB
EmbracingSound™ technology

Drivers
2 x 1.5" tweeter
1 x 4x5" woofer

Tuner
FM Stereo
Frequency range 87,5 – 108MHz
RDS Station Name Display

General
Inputs
2 x Line in (3,5 mm stereo mini jack)
12V DC in
Outputs
S-Video out
Subwoofer out (3,5 mm stereo mini jack)
Headphones jack (3,5 mm stereo mini jack)

Rechargeable battery pack
12V 1800 mAh

Size 120x305x140mm (w h d, excl. handle)

Weight 2.1kg (Incl battery pack)

Regarding battery

- To assure maximum life time of the battery, it should be totally discharged and fully charged again every month.
- Normal operating time at typical use: 3-5 hrs
- Charging battery to full: 10 hrs
- ON diode flashes during charging and trickle charge.
- alla uppladdningsbara batt laddas ur med tiden

OPERATIONS

FRONT

1. Tune up

Single push changes 0.05 MHz at a time.

Long push scans fast up for next available station.

2. Tune down

Single push changes 0.05 MHz at a time.

Long push scans fast down for next available station.

3. LED status

System on: Green steady light

Green light flashing when charging, steady light when fully charged.

Red light flashing when battery low, <10%.

System off: Green light flashing when charging, and slow flash during trickle charge.

Red light flashing when battery low, <10%.

(Faster flash the less battery capacity remaining)

4. Stand by

Turns Porto on and off.

5. iPod universal dock

You can use any iPod adaptor to connect any iPod model.

6. Volume up

Single push changes 1 step at a time.

Long push increases volume faster.

7. Volume down

Single push changes 1 step at a time.

Long push decreases volume faster.

8. SRC

Source selection, toggle between connected sources.

(iPod, FM tuner, Line 1 and Line 2.)

9. Infrared sensor for remote control

10. Display

11. Acoustic divider

Part of the EmbracingSound™ technology.

12. Tweeters

13. Woofer

BACK

1. FM antenna

Pull out to improve FM reception.

2. S-Video out

Connect to your TV set to view movies on screen.

note: make sure porto is set to on before ipod is inserted

3. Stereo/Mono switch

If FM reception is poor, switch to Mono to reduce noise.

4. Line in x 2

Connect other sound sources, such as CD-player, Mp3-player, PC, etc.

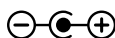
5. Subwoofer out

Connect to powered subwoofer.

6. Headphones

7. 12V DC IN

Connect the external AC power supply or DC 12V from car or boat to charge Porto.



REMOTE CONTROL

1. On/off

Turns Porto on and off.

2. Mute

Push to turn sound off. Push again to turn sound on.

3. SRC

Source selection, toggle between connected sources (iPod, FM tuner, Line 1 and Line 2.)

4. Volume down

Single push changes 1 step at a time.

Long push decreases volume faster.

5. Volume up

Single push changes 1 step at a time.

Long push increases volume faster.

6. Track/tune previous/down.

When in iPod mode, changes to previous track.

When in FM mode, tune down.

7. Track/tune next/up.

When in iPod mode, changes to next track.

When in FM mode, tune up.

8. Play/pause

Play or pause when in iPod mode.



The lightning flash with arrowhead symbol, within an equilateral triangle, is intended to alert the user to the presence of uninsulated “dangerous voltage” within the product’s enclosure that may be of sufficient magnitude to constitute a risk of electric shock to persons.



The exclamation point within an equilateral triangle is intended to alert the user to the presence of important operating and maintenance (servicing) instructions in the literature accompanying the appliance.

WARNING:

TO REDUCE THE RISK OF FIRE OR ELECTRIC SHOCK, DO NOT EXPOSE THIS APPARATUS TO RAIN OR MOISTURE.

CAUTION:

TO REDUCE THE RISK OF ELECTRIC SHOCK, DO NOT REMOVE COVER (OR BACK). NO USER-SERVICEABLE PARTS INSIDE. REFER SERVICING TO QUALIFIED SERVICE PERSONNEL.

Important Safety Instructions

1. Read these instructions.
2. Keep these instructions.
3. Heed all warnings.
4. Follow all instructions.
5. Do not use this apparatus near water.
6. Clean only with dry cloth.
7. Do not block any ventilation openings. Install in accordance with the manufacturer’s instructions.
8. Do not install near any heat sources such as radiators, heat registers, stoves, or other apparatus (including amplifiers) that produce heat.
9. Protect the power cord from being walked on or pinched particularly at plugs, convenience receptacles, and the point where they exit from the apparatus.
10. Only use attachments/accessories specified by the manufacturer.
11. Unplug this apparatus during lightning storms or when unused for long periods of time.
12. Refer all servicing to qualified service personnel. Servicing is required when the apparatus has been damaged in any way, such as power-supply cord or plug is damaged, liquid has been spilled or objects have fallen into the apparatus, the apparatus has been exposed to rain or moisture, does not operate normally, or has been dropped.
13. **Damage Requiring Service**
Unplug the apparatus from the wall outlet and refer servicing to qualified service personnel under the following conditions:
 - A. When the power-supply cord or plug is damaged,
 - B. If liquid has been spilled, or objects have fallen into the apparatus,
 - C. If the apparatus has been exposed to rain or water,
 - D. If the apparatus does not operate normally by following the operating instructions. Adjust only those controls that are covered by the operating instructions as an improper adjustment of other controls may result in damage and will often require extensive work by a qualified technician to restore the apparatus to its normal operation,
 - E. If the apparatus has been dropped or damaged in any way, and
 - F. When the apparatus exhibits a distinct change in performance this indicates a need for service.
14. **Object and Liquid Entry**
Never push objects of any kind into the apparatus through openings as they may touch dangerous voltage points or short-out parts that could result in a fire or electric shock. The apparatus shall not be exposed to dripping or splashing and no objects filled with liquids, such as vases shall be placed on the apparatus. Don’t put candles or other burning objects on top of this unit.
15. **Batteries**
Always consider the environmental issues and follow local regulations when disposing of batteries.
16. If you install the apparatus in a built-in installation, such as a bookcase or rack, ensure that there is adequate ventilation. Leave 20 cm (8”) of free space at the top and sides and 10 cm (4”) at the rear. The rear edge of the shelf or board above the apparatus shall be set 10 cm (4”) away from the rear panel or wall, creating a flue-like gap for warm air to escape.
17. This device has no mains switch. To disconnect this device from mains supply, the power cord must be disconnected.
18. The power supply and power cord for this apparatus is intended for indoor use only.
19. Do not move the apparatus if another device, such as an iPod or any other audio device, is connected to it.



sound, science and style

© Audio Pro AB Sweden 2006/2007.

Audio Pro®, the Audio Pro logotype, the 'a' symbol and ace-bass® are all registered trademarks of Audio Pro AB, Sweden. All rights reserved. Audio Pro follows a policy of continuous advancement in development. Specifications may be changed without notice.



EmbracingSound™ is the single-point loudspeaker technology for consumers and professionals alike to experience more of the recording with better resolution and clarity than ever before. Thanks to the unique speaker placement and an ingenious signal treatment, the stereo signal is optimized to reach our ears instead of separate speakers. Just sit back and experience more of your music and maybe you will find new favorites, as well as, making excursions into music genres that you where totally unfamiliar with before. For further information please visit www.embracingsound.com.

The trademark EmbracingSound™ is owned by Embracing Sound Experience AB.
US Patent # 7,010,128 Patents pending.



The "Made for iPod" logo indicates that this product has been designed specifically to work with iPod. The manufacturer certifies that this accessory has been made in accordance with the high standards of quality and performance that you expect from iPod and Apple.

iPod doesn't come in just one size or shape. The Universal Dock provides a single, elegant way to connect any iPod with dock connector to your iPod accessory. iPod fits into the Universal Dock through the use of interchangeable inserts called Dock Adapters.