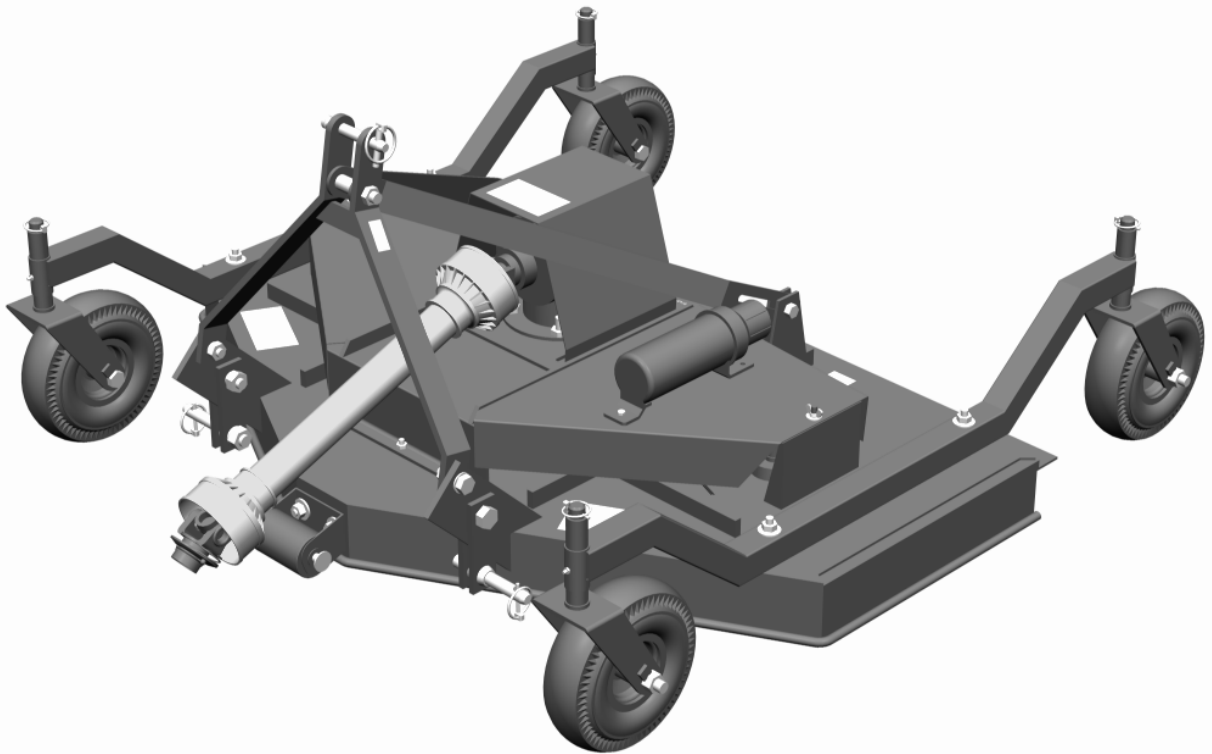


bühler

farm king



Finishing Mower

Operator's and Parts Manual
FK301

2009

TABLE OF CONTENTS

| DESCRIPTION | PAGE |
|---|------|
| WARRANTY | 1 |
| INTRODUCTION | 2 |
| SAFETY | 3 |
| Safety | 3 |
| General Safety | 4 |
| Start Up Safety | 4 |
| Operation Safety | 4 |
| Transport Safety | 5 |
| Service and Maintenance Safety | 5 |
| Storage Safety | 5 |
| Safety Signs | 6 |
| Safety Sign Installation | 6 |
| ASSEMBLY | 9 |
| Hitch Assembly Instructions | 9 |
| Wheel Assembly Instructions | 9 |
| START UP | |
| Machine Break-In | 9 |
| OPERATION | 10 |
| Operating Instructions | 10 |
| Field Use Preparation | 11 |
| Field Operation | 11 |
| Disconnecting from Tractor | 12 |
| Rear Discharge Mower Chain Kit Assembly | 12 |
| Quick Hitch | 12 |
| Theory of Operation | 13 |
| MAINTENANCE | 15 |
| Maintenance | 15 |
| Bolt Torque | 17 |

| | |
|--|----|
| PARTS DRAWINGS | 18 |
| Side Discharge Drawing | 18 |
| Side Discharge Parts List | 19 |
| 4' Rear Discharge Drawing..... | 22 |
| 4' Rear Discharge Parts List..... | 23 |
| 5', 6' & 7' Rear Discharge Drawing..... | 25 |
| 5', 6' & 7' Rear Discharge Parts List | 26 |
| Gearbox Drawing..... | 29 |
| Gearbox Parts List..... | 30 |
| Spindle Assembly Drawing..... | 31 |
| Spindle Parts Lists..... | 32 |
| PTO Shaft Drawing..... | 33 |
| PTO Shaft Parts List..... | 34 |
| Rear Discharge Chain Kit Drawing..... | 35 |
| Chain Kit Assembly Drawing | 36 |
| Quick Hitch Kit Drawing & Parts List..... | 37 |
| SHIPPING KIT AND BUNDLE NUMBERS | 38 |

WARRANTY POLICY

Buhler Manufacturing products are warranted for a period of twelve (12) months (90 days for commercial application) from original date of purchase, by original purchaser, to be free from defects in material and workmanship under correct, normal agricultural use and proper applications.

Buhler Manufacturing's obligations under this warranty shall be limited to the repair or exchange, at Buhler Manufacturing's option, of any Buhler Manufacturing product or part which proves to be defective as provided. Buhler Manufacturing reserves the right to either inspect the product at the buyer's location or have it returned to the factory for inspection.

The above warranty does not extend to goods damaged or subject to accident, abuse or misuse after shipment from Buhler Manufacturing's factory, nor to goods altered or repaired by anyone other than an authorized Buhler Manufacturing representative.

Buhler Manufacturing makes no Express Warranties other than those which are specifically described. Any description of goods, including any references and specifications in catalogues, circulars and other written material published, is for the sole purpose of identifying goods and shall conform to such descriptions. Any sample or model is for illustrative purposes only and does not create an Express Warranty that the goods conform to sample or model shown.

The purchaser is solely responsible for determining suitability of goods sold. This warranty is expressly in lieu of all other warranties expressed or implied. Buhler Manufacturing will in no event be liable for any incidental or consequential damages whatsoever. Nor for any sum in excess of the price received for the goods for which liability is claimed.

WARRANTY CLAIMS:

Warranty requests must be prepared on Buhler Manufacturing Warranty Claim Forms with all requested information properly completed. Warranty Claims must be submitted within a thirty (30) day period from date of failure repair.

WARRANTY LABOR:

Any labor subject to warranty **must** be authorized by Buhler Manufacturing. The labor rate for replacing defective parts, where applicable, will be credited at 100% of the dealer's posted shop rate. Defective parts will receive an extra 10% discount to assist with freight or other incidental costs.

GOVERNMENT LEGISLATION:

Warranty terms and conditions are subject to Provincial or State legislation.

IMPORTANT FACTS:

Buckets and Bucket Tines Carry No Warranty
Bent Spears Carry No Warranty
Snowblower Fan Shafts Carry No Warranty
Mower Blades Carry No Warranty
Portable Auger Parts Have Two (2) Year Warranty
Loader Parts Have Two (2) Year Warranty

IMPORTANT NOTE: This warranty does not apply to rentals

INTRODUCTION

Buhler Farm King has been building top quality finishing mowers for 15 years and has refined these mowers to be among the best in the industry. Manufactured with top quality material, the edge of the mower deck features solid reinforcing rods. These finishing mowers are Buhler Quick Hitch compatible and are available in widths ranging from 48" to 84".

Each mower features three high-speed blades with one of the highest rated tip-speeds in the industry. This creates powerful suction that lifts the grass for a crisp cut. A blade overlap of 1 5/8" to 2 5/8" prevents stripping and ensures the lawn is mowed evenly. Buhler Farm King Finishing Mowers are built to be durable and long lasting. Pneumatic tires with puncture proof sealant are standard. Each wheel yoke assembly includes a cutting height adjustment on the 1" wheel yoke shaft. Bushings in the wheel hubs ensure long-term reliability without needing frequent lubrication. A slide adjustment is located under the gearbox for easy belt tensioning.

Keep this manual handy for frequent reference. All new operators or owners must review the manual before using the equipment and at least annually thereafter. Contact your Buhler Dealer if you need assistance, information, or additional copies of the manual. Visit our website at www.buhler.com for a complete list of dealers in your area. The directions left, right, front and rear, as mentioned throughout this manual, are as seen facing in the direction of travel of the implement.

SAFETY INSTRUCTIONS

Remember, YOU are the key to safety. Good safety practices not only protect you, but also the people around you. Make these practices a working part of your safety program. Be certain that everyone operating this equipment is familiar with the recommended operating and maintenance procedures and follows all the safety precautions. Most accidents can be prevented. Do not risk injury or death by ignoring good safety practices.

The alert symbol is used throughout this manual. It indicates attention is required and identifies hazards. Follow the recommended precautions.



The safety alert symbol means...

ATTENTION! BECOME ALERT! YOUR SAFETY IS INVOLVED!

CAUTION

The caution symbol indicates a potentially hazardous situation that, if not avoided, may result in minor or moderate injury. It may also be used to alert against unsafe practices.

WARNING

The Warning Symbol indicates a potentially hazardous situation that, if not avoided, could result in death or serious injury, and includes hazards that are exposed when guards are removed. It may also be used to alert against unsafe practices.

DANGER

The Danger Symbol indicates an imminently hazardous situation that, if not avoided will result in death or serious injury. This signal word is to be limited to the most extreme situations, typically for machine components that, for functional purposes, cannot be guarded.

GENERAL SAFETY INSTRUCTIONS

Have a first-aid kit available for use and know how to use it.

Have a fire extinguisher available, stored in a highly visible location, and know how to use it.

Wear appropriate protective gear. This list may include but is not limited to:

- Hard hat
- Protective shoes with slip resistant soles
- Protective glasses or goggles
- Heavy gloves
- Wet weather gear
- Hearing protection
- Respirator or filter mask

Read and understand the Operator's Manual and all safety signs before operating, servicing, adjusting, repairing, or unplugging the equipment.

Do not attempt any unauthorized modifications to your Buhler product as this could affect function or safety, and could affect the life of the equipment.

Never start or operate the mower except from the operator's station on the power unit.

Inspect and clean the working area before operating.

Keep hands, feet, clothing, and hair away from moving parts.

Ensure bystanders are clear of the area before operating.

START UP SAFETY

Do not let inexperienced operators or children run this equipment.

Place all tractor and machine controls in neutral before starting.

Operate only with ROPS and seatbelt equipped tractors.

Do not operate inside a building unless there is adequate ventilation.

Ensure all shields are in place and in good condition before operating.

Stay clear of PTO shaft and machine when engaging PTO.

OPERATION SAFETY

Do not permit riders.

Do not wear loose fitting clothing during operation.

Never operate over 540 PTO rpm speed.

Never operate the equipment in the raised position.

TRANSPORT SAFETY

Review Transport Safety instructions in tractor manual before moving.

Check with local authorities regarding transport on public roads. Obey all applicable laws and regulations.

Make sure the SMV (Slow Moving Vehicle) emblem and all the lights and reflectors that are required by the local highway and transport authorities are in place, are clean, and can be seen clearly by all overtaking and oncoming traffic.

Never have the equipment in operation during transport.

Always travel at a safe speed.

Inflate transport tires to recommended pressure.

SERVICE AND MAINTENANCE SAFETY

Stop engine, set brake, remove ignition key, and wait for all moving parts to stop before servicing, adjusting, repairing, or unplugging.

Support the equipment with blocks or safety stands before working beneath it.

Follow good shop practices including:

- Keep service area clean and dry
- Be sure electrical outlets and tools are properly grounded
- Use adequate light for the job

Use only tools, jacks, and hoists of sufficient capacity for the job.

Replace and secure all shields removed during servicing before operating.

Use heavy leather gloves to handle sharp objects.

Failure to follow proper procedures when mounting a tire on a wheel or rim can produce an explosion, which may result in serious injury or death.

STORAGE SAFETY

Store the unit in an area away from human activity.

Do not permit children to play on or around the stored machine.

Support the frame on stands and blocks to provide a secure base.

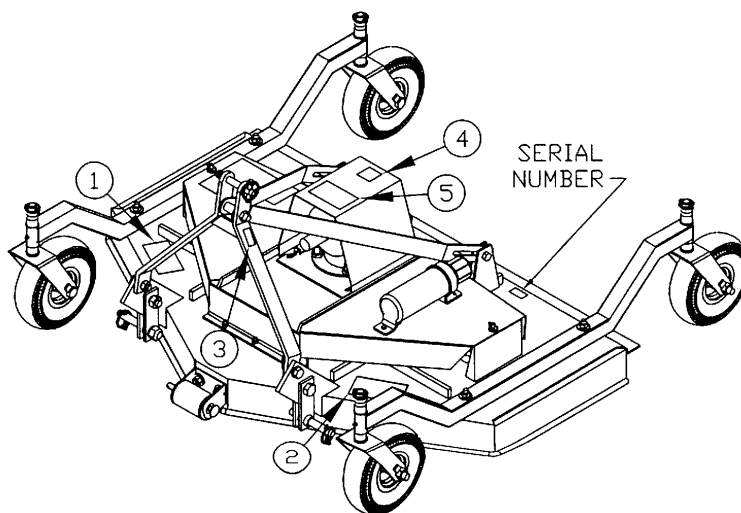
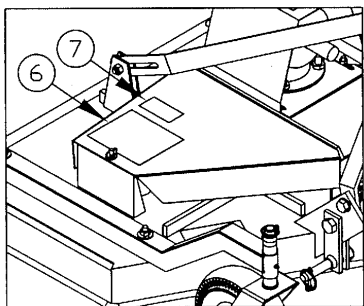
SAFETY SIGNS

The following illustration shows the approximate location and detail of safety signs. Keep all safety signs clean and legible and replace any that are damaged or missing. When original parts are replaced, any safety signs affixed to those parts should be replaced as well. Replacement safety signs are available from your local dealer.

INSTALLATION OF SAFETY SIGNS

To install safety signs, ensure the installation area is clean and dry. Decide on the exact position before you remove the backing paper. Remove the smallest portion of the split backing paper and align over the specified area. Carefully press in place. Slowly peel back the remaining paper and smooth the remaining portion in place. Small air pockets can be pierced with a pin and smoothed out.

FINISHING MOWER SAFETY SIGNS

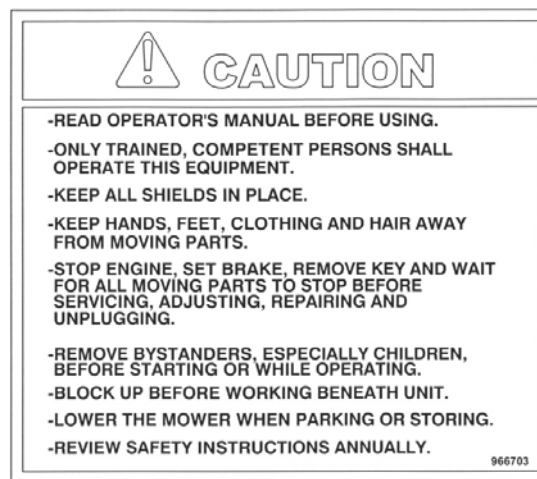


FM-45

Replace safety signs immediately should they become damaged, torn or illegible. Obtain replacements from your authorized dealer using the part numbers shown.

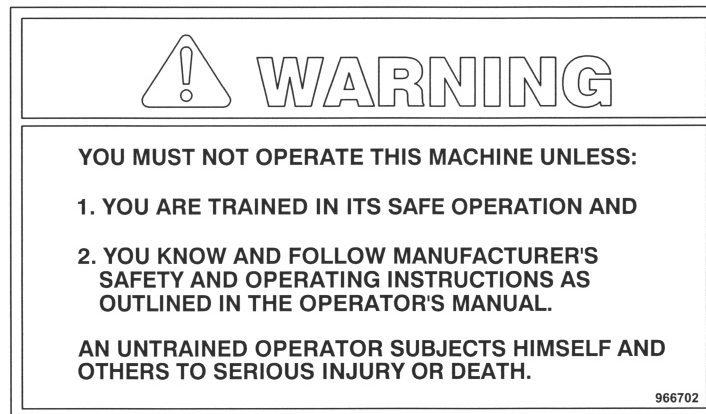


#1

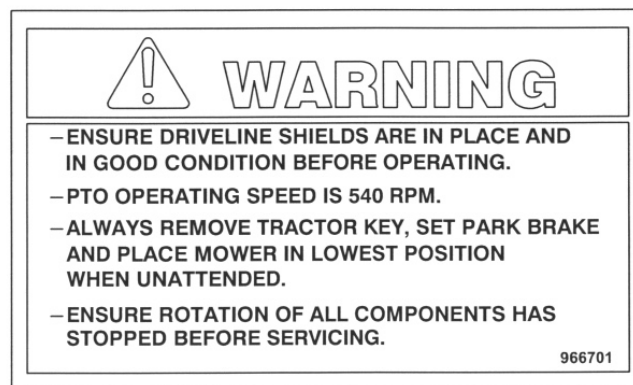


#2

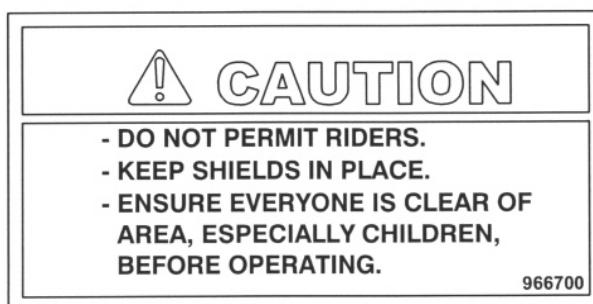
FINISHING MOWER SAFETY SIGNS – cont'd.



#3



#4



#5



#6

HITCH ASSEMBLY INSTRUCTIONS

1. The hitch is assembled except for the two pivot bars (#70). Bolt one end of each pivot bar between the welded brackets at the back of the deck using the bolts assembled in the mower.
2. Remove the 3/4" bolt (#64) at the top of the hitch weldment. Using the same bolt, assemble with the pivot bars between the hitch weldment (#38).

WHEEL ASSEMBLY INSTRUCTIONS

1. The wheel and tire assemblies (Side FM - #65, Rear FM - #67) are shipped in a separate carton. Remove the wheel bolts (Side FM - #52, Rear FM - #55) from the four wheel yokes (Side FM - #47, Rear FM - #54). Assemble the wheels using bolt and lock nut. Grease wheels and wheel yokes before using for the first time.

START UP

MACHINE BREAK-IN

The following items should be checked when the implement is used for the first time:
Before operating:

- Lubricate all grease points.
- Remove plug in gearbox, and fill with oil to plug level.

After operating for 1/2 hour or after completing 1/2 acre (0.2 ha), stop the engine and set the brake:

- Check all nuts, bolts, and other fasteners. Tighten to their specified torque level
- Check that the blades are in good condition and bolted securely to the spindle
- Check that the PTO driveline shield turns freely.
- Lubricate all grease points.
- Check the oil level in the gearbox. Add as required.

After operating for 5 hours and after operating for 10 hours:

- Repeat the items above


After these initial checks, refer to the Maintenance section of this manual for regular maintenance intervals.

OPERATING INSTRUCTIONS

The Finishing Mower is designed to be used on a tractor with a standard category 1 three-point hitch. See the specification sheet for horsepower requirements. Using excessive power will shorten the life of the drive train components.

CONNECTING TO TRACTOR:

Park the mower and tractor on a level dry area free of debris and foreign objects.

1. Slowly back the tractor up to the machine.
2. Adjust the three-point arms to align with the mower lift pins.
3. Stop the tractor, set the parking brake and remove the ignition key before dismounting.
4. Slide the three-point arms on the lift pins and lock in place with the clips supplied.
5. With the tractor engine shut off, attach the PTO shaft. Both ends of the PTO have a standard 6-spline end with a spring-loaded locking collar. Turn the round collar at the ends of the PTO clockwise to slide onto the splined shafts. The spring-loaded pin in the PTO yoke must lock into the groove on the splined shaft on the gearbox and tractor. Always check to see that both ends of the PTO shaft are securely attached every time the mower is used. This should always be done with the tractor engine shut off. Attach the safety chains supplied with the PTO shaft, allowing sufficient slack for the driveline during turns and operation. Check booklet attached to the PTO for instructions.
 **NOTE:** At least one third of the telescoping length of the PTO should overlap when the mower is in operation.
6. Attach the top link on the tractor to the link pin assembled in the hitch weldment (#45). Adjust the turnbuckle on the tractor top link so that the upper lift bracket hangs straight down with the tractor and mower both on level ground.

FIELD USE PREPARATION

Read and understand the Operator's Manual and all safety signs before operating.

The implement and tractor should be on a dry level area, clear of debris.

Lower the three point arms on the tractor so they line up with the mounting pins on the implement.

Stop the engine and set the brake.

Mount the lower lift pins first and then adjust the implement angle using the turnbuckle on the top link. Check that all the clips holding the three point pins are securely in place.

Start the engine, and raise the implement slightly.

Adjust the sway blocks or chains on the tractor so the mower is centered between the rear wheels.

Adjust the three-point hitch arms to level the implement from side to side.

Adjust the turnbuckle on the top of the three-point hitch arms to level the implement from front to back.

Adjust the cutting height using the wheel spacers on the wheel yokes. The spacers should be set at the same height on all four wheels.

Check for proper air pressure in tires.

Check tightness of belts, bolts, and other hardware.

Check blades to see if they are damaged. Sharpen or replace blades if necessary.

Check that blade bolts are tight.

Clear the working area of foreign objects and check that all bystanders are standing clear before starting.

Start the tractor with the mower resting on the ground on all four wheels.

Slowly engage the PTO and bring the speed up to 540 PTO rpm for cutting.

FIELD OPERATION

1. The mower works best on dry grass. Slower cutting speed and occasional cleaning may be required on damp or wet grass.
2. The PTO must run at the full 540 PTO rpm for a good cut. Slower speeds or double cutting could be required for very high grass.
3. Use a higher blade setting for rough areas to prevent scalping of the surface.
4. Always cut counter-clockwise so grass clippings are thrown on the grass already cut. This saves power and wear on the blades.
5. Sharpen blades if grass tears instead of cutting cleanly.
6. Slow down when cutting corners. Turning too sharply on corners can leave a small strip of grass uncut.

DISCONNECTING FROM TRACTOR

1. Park on a firm level area and clean the mower.
2. Lower the mower until the load is off the hitch arms.
3. Disconnect the hitch arms and the PTO shaft.
4. Cover the mower for storage to prevent rust.

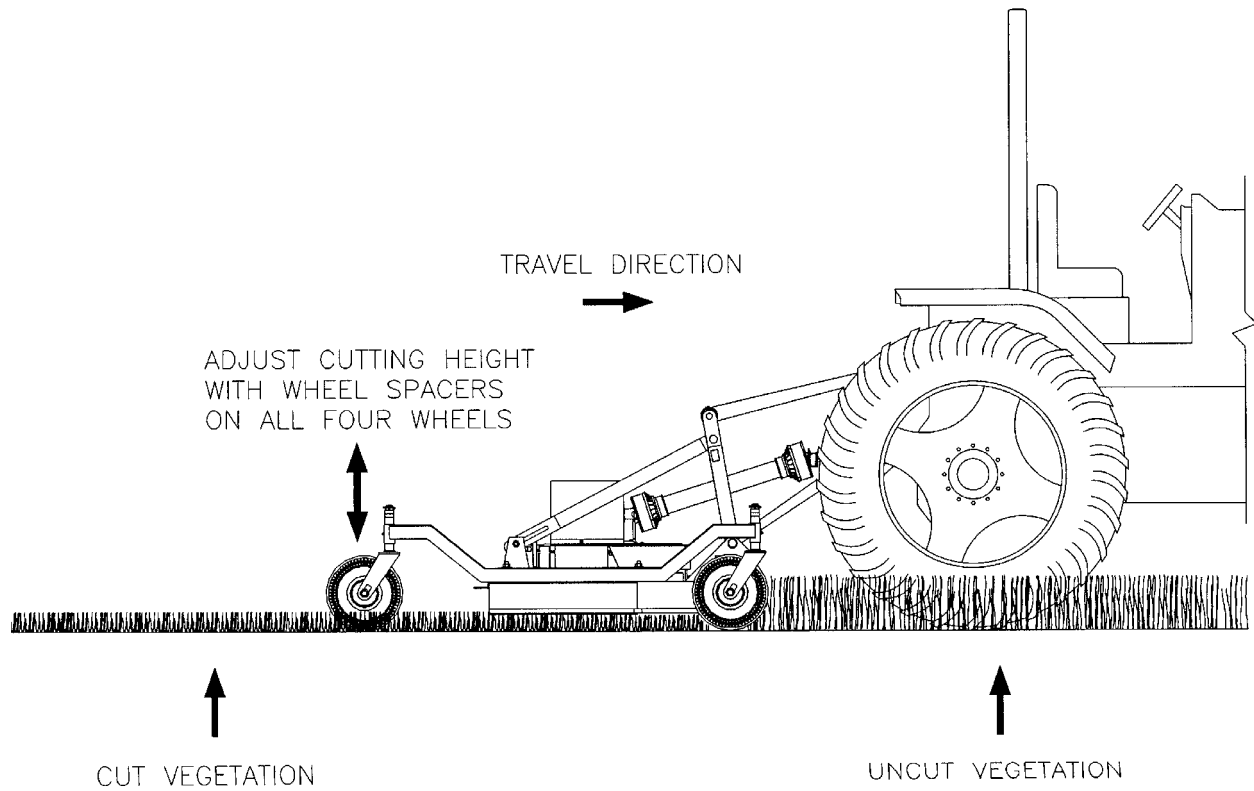
REAR DISCHARGE MOWER CHAIN KIT ASSEMBLY

1. With the narrow lip of the chain guard plate (#2) turned up, push an end link of a 3-link chain up through the slot nearest the end of the guard plate. The chain rod (#3) slides through the chain link along the top surface of the chain guard plate. Slide through each chain in order along the entire guard plate. Slide a flat washer on each end of the rod. Hold the assembly in place with a 1/8" x 1" cotter pin (#8) at both ends of the rod.
2. A 5/8" long spacer (#6) fits between the guard plate and the rear lip on the deck. These spacers must be centered on the holes in the guard plate and the rear lip on the deck. With the spacers in place, position the chain guard assembly under the lip on the deck. Clamp on assembly to hold in place. Bolt guard plate assembly to the deck using 3/8" x 1 1/2" bolts, lock washers and hex nut.

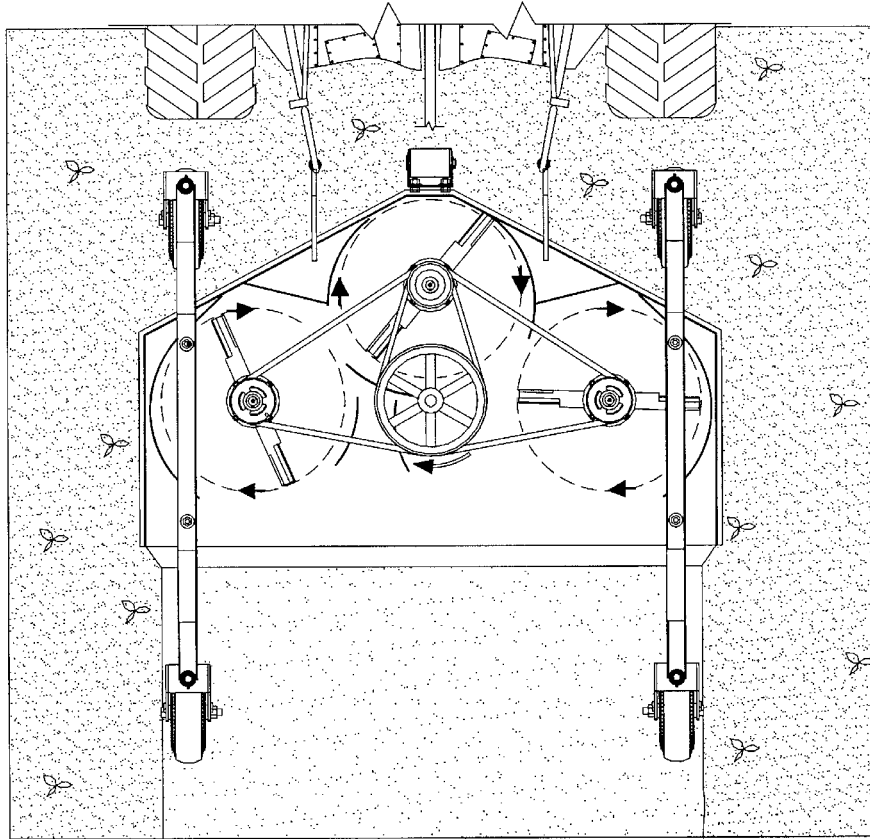
QUICK HITCH KIT INSTRUCTIONS SIDE & REAR DISCHARGE FINISHING MOWER

1. Remove the two sets of lift brackets with the lower lift pins from the mower hitch arms (#4).
2. Bolt the adaptor plates (#13) to the outside of the hitch arms welded to the deck. Turn the plates as shown in drawing. Use the 3/4" x 2 1/2" bolts and bushings in the 1" holes. The 5/8" x 2" bolts holding on the a-frame weldment are removed and replaced with 2 1/2" bolts (#3) which also fit through the adaptor plates. The bushings already in the A-frame must remain in place.
3. Assemble the two quick hitch arms (#4) on the inside of the adaptor plates using the lift pins with the swivel bushings from step one at the bottom. The A-frame and the quick hitch arms are connected at the top using an adaptor weldment (#11). With the welded bushings on the adaptor facing down, the A-frame is attached using the top link pin (#9). The hitch arms (#4) are bolted on using a 3/4" x 4 1/2" bolt (#1) which fits through a 2 3/8" spacer (#12).

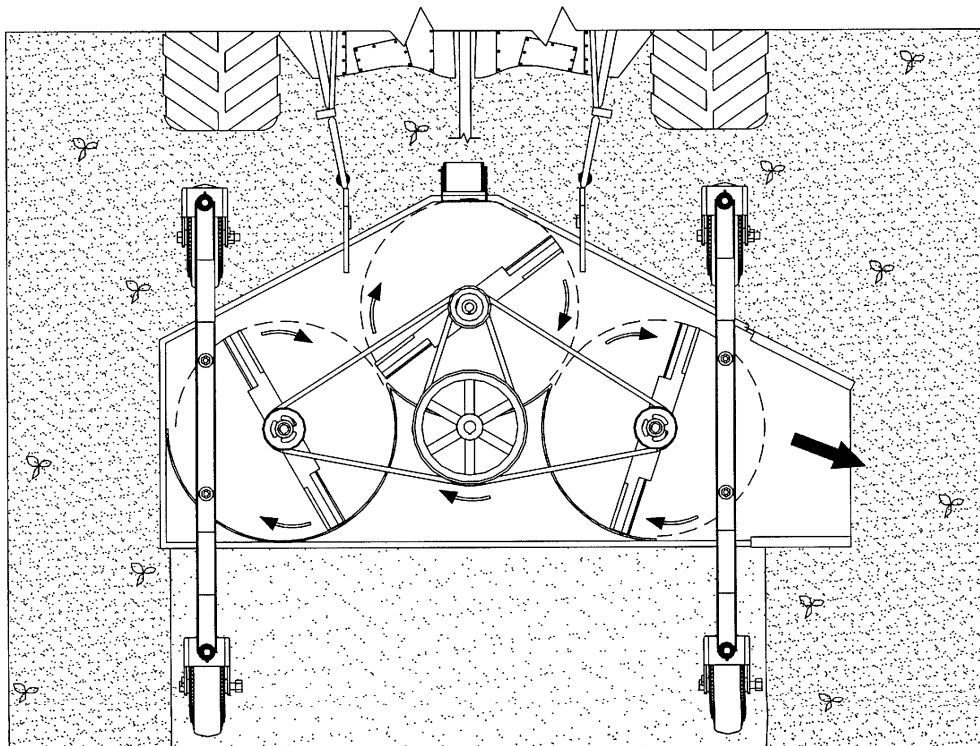
THEORY OF OPERATION



FM-64



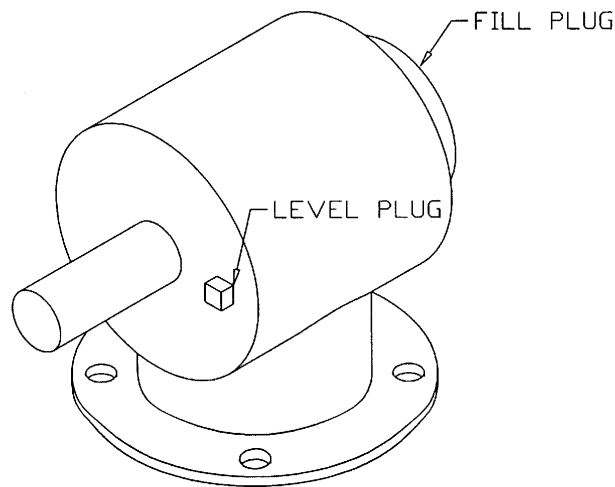
FM-65



FM-66

MAINTENANCE

1. **GEARBOX:** The gearbox should be filled with SAE 90 oil to the bottom of level plug when shipped. Check the mower before using and at regular intervals (approx. every 40 hours). See that this oil level is maintained.

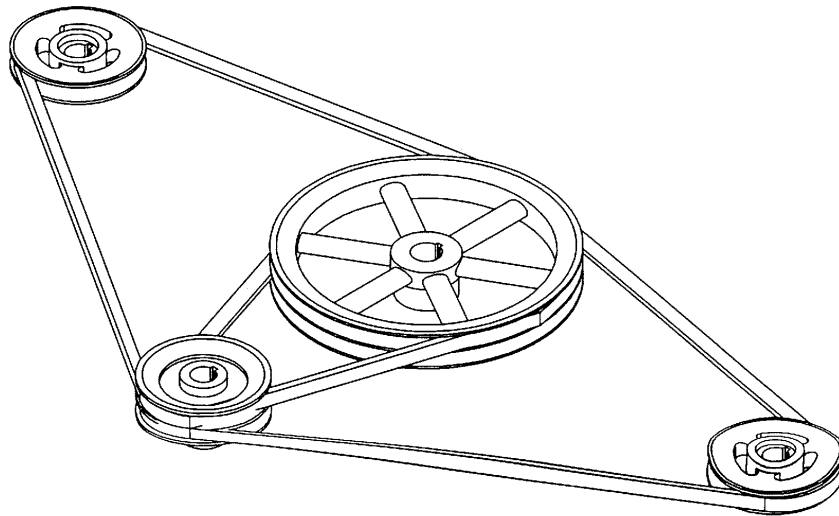


FM-60

2. **GREASE:** Grease wheel yokes, wheel bushing and PTO u-joints approximately every 8 hours. Before using the mower for the first time, grease wheel bushings until you can see the grease squeezed out at the ends of the wheel hub. Lubricate the telescoping PTO tube and the quick release collars on the ends of the shaft about every 20 hours. Clean all grease fittings before injecting grease and immediately replace any damaged or missing grease fittings. When using the safety chains supplied with the PTO shaft, the shield bearings must be kept lubricated.
NOTE: There is no grease nipple on the spindles because they use sealed bearings.
3. **SHIELDING:** Always keep all shielding in place and repair or replace if damaged.
4. **BLADES:** When replacing or grinding blades, all three blades must be replaced or reground at the same time to maintain the proper balance in the cutting unit. Block up the mower securely before attempting to remove the blades. Use heavy leather gloves to handle the blades. Be sure to tighten center bolt and lock washer securely when replacing blades. Use a torque wrench to re-tighten spindle bolts to 180 ft.-lbs. (244 N-m). The bolts have a patch of thread lock material pre-approved which will hold for up to five usages. Always replace the lock washer with the extra heavy duty washer supplied with the spindle

MAINTENANCE – Cont'd.

5. **BELTS:** Remove the belt guards to check belt tightness. The center of the belt span should deflect about 1/2" with nominal pressure. If the belts slip or are too loose, the bolts holding the gearbox must be loosened. Use the threaded tightener rod on the gearbox mount to tighten the belts. Lock the rod in place and re-tighten the gearbox bolts when the belts are properly tightened. Replace belt guards. Changing belts follows the same procedure as given in the preceding paragraph, except you will have to loosen the belts further to remove them. The belt installation is shown in the following drawing. **NOTE:** Belts should always be replaced in matched sets.



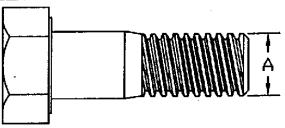
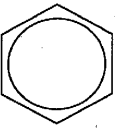


FM-61

7. **TIRES:** Maintain proper air pressure in tires.
50 psi (345 kPa) max. for 4', 5', & 6' Finishing Mowers
40 psi (276 kPa) max. for 7' Finishing Mowers

BOLT TORQUE

CHECKING BOLT TORQUE

The tables shown below give correct torque values for various bolts and hex bolts. Tighten all bolts to the torques specified in chart unless otherwise noted. Check tightness of bolts periodically, using bolt torque chart as a guide. Replace hardware with the same strength bolt.

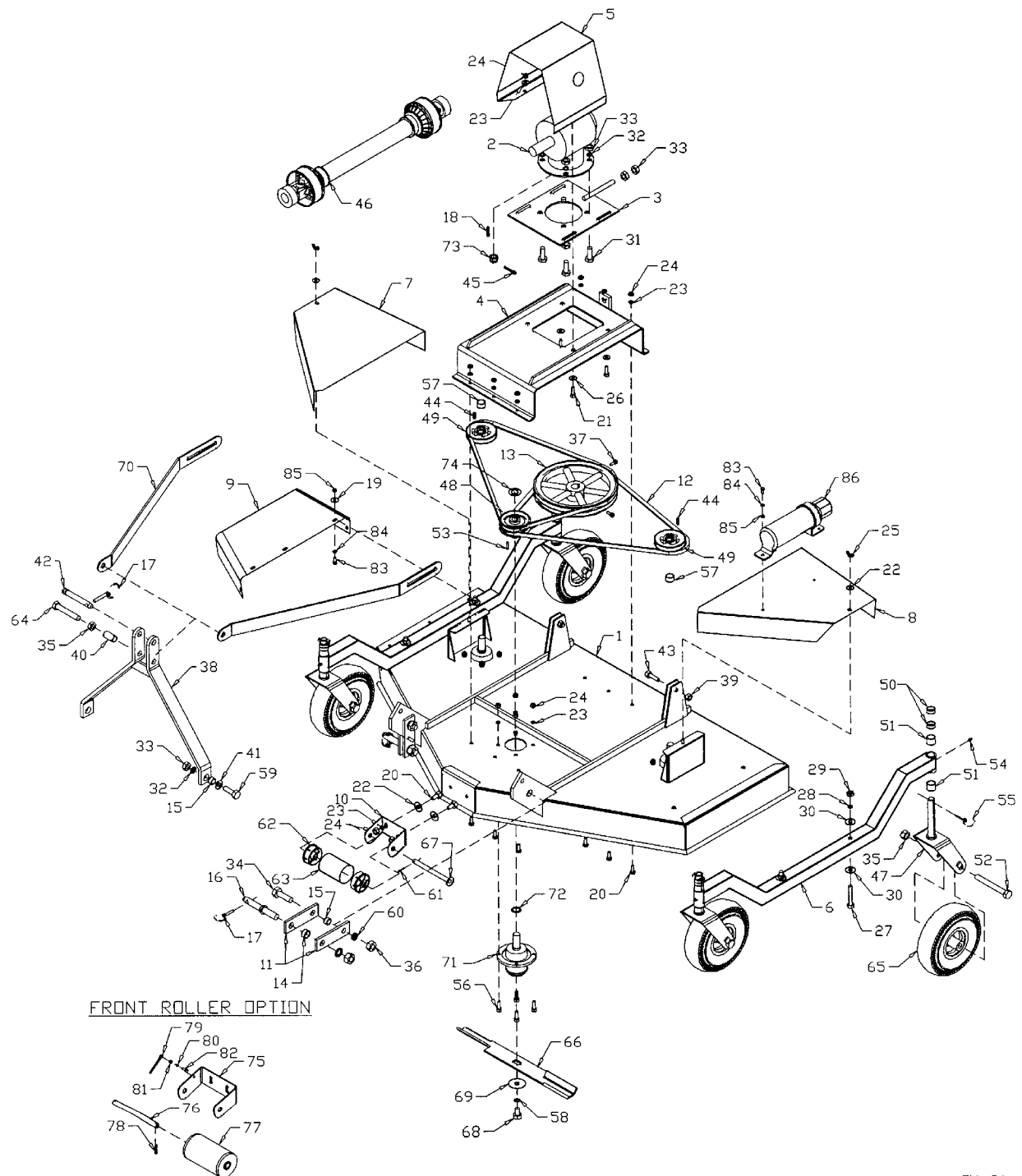
| Bolt Torque | | | | | | |
|---|---|-------|--|-------|---|-------|
|  |  | |  | |  | |
| Bolt Diameter | SAE2 | | SAE5 | | SAE8 | |
| "A" | N.m | lb-ft | N.m | lb-ft | N.m | lb-ft |
| 1/4" | 8 | 6 | 12 | 9 | 17 | 12 |
| 5/16" | 13 | 10 | 25 | 19 | 36 | 27 |
| 3/8" | 27 | 20 | 45 | 33 | 63 | 45 |
| 7/16" | 41 | 30 | 72 | 53 | 100 | 75 |
| 1/2" | 61 | 45 | 110 | 80 | 155 | 115 |
| 9/16" | 95 | 70 | 155 | 115 | 220 | 165 |
| 5/8" | 128 | 95 | 215 | 160 | 305 | 220 |
| 3/4" | 225 | 165 | 390 | 290 | 540 | 400 |
| 7/8" | 230 | 170 | 570 | 420 | 880 | 650 |
| 1" | 345 | 225 | 850 | 630 | 1320 | 970 |

NOTE: See page 15 for correct spindle torque. Do not use this chart for spindle bolt only.

Torque figures indicated above are valid for non-greased or non-oiled threads and heads unless otherwise specified. Therefore, do not grease or oil bolts or hex bolts unless otherwise specified in this manual. When using locking elements, increase torque values by 5%.

* Torque value for bolts and hex bolts are identified by their head markings.

FINISHING MOWER (SIDE DISCHARGE)



FM-01

WHEN ORDERING PARTS

Always give your dealer the Model, Color and Serial Number of your machine to assist him in ordering and obtaining the correct parts. Use the exploded view and tabular listing of the area of interest to exactly identify the required part.

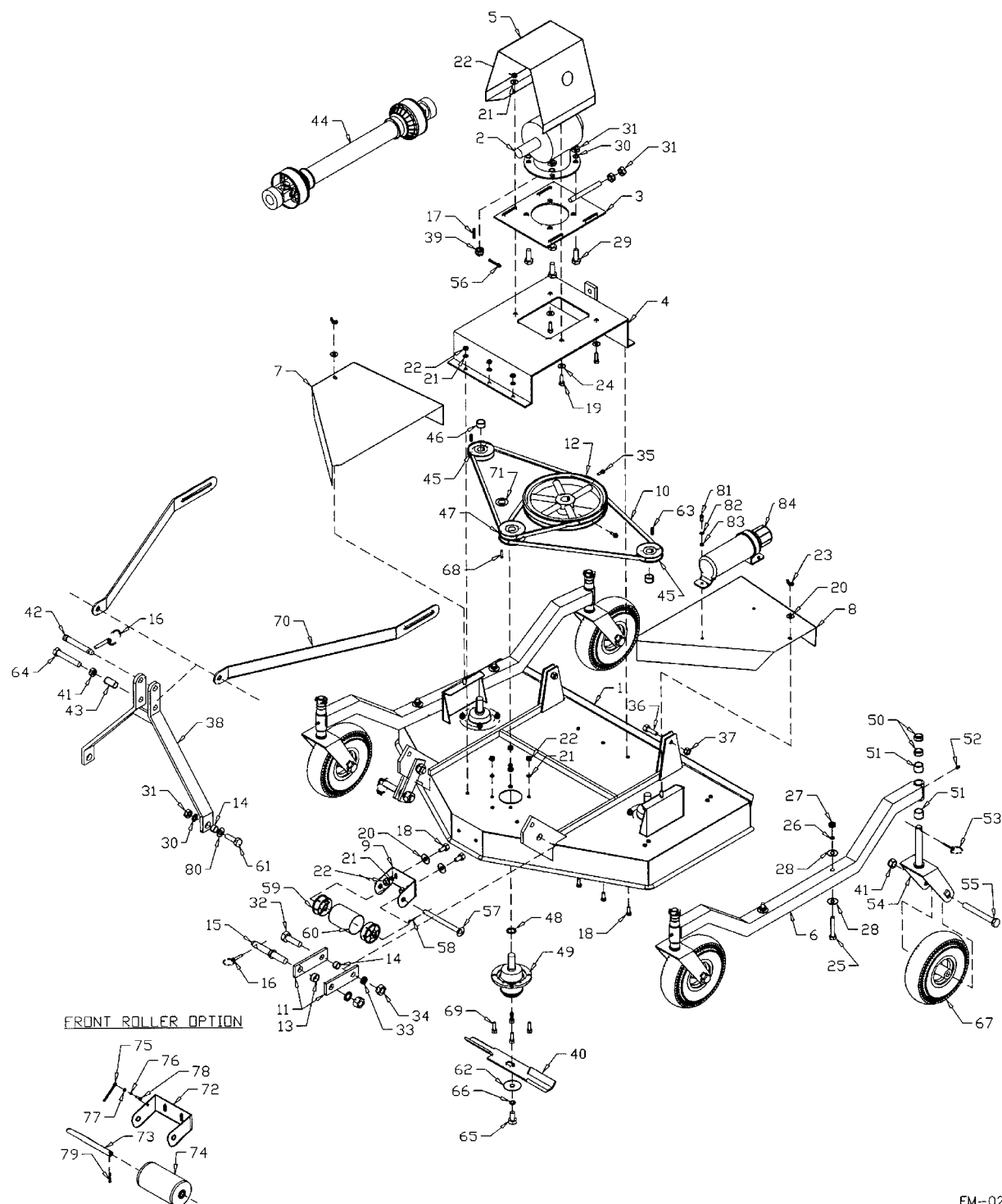
SIDE DISCHARGE FINISHING MOWER

| ITEM | PART # | DESCRIPTION |
|------|-----------|---|
| 1 | 902663 | 4' Deck Weldment |
| | 902664 | 5' Deck Weldment |
| | 902665 | 6' Deck Weldment |
| 2 | 912300158 | Gearbox (Without Oil) |
| 3 | 980004200 | Gearbox Base Plate |
| 4 | 906342 | Gearbox Mount Plate (4') |
| | 906343 | Gearbox Mount Plate (5' & 6') |
| 5 | 966748 | PTO Guard |
| 6 | 966762 | 47" Axle Beam Weldment (4') |
| | 980008111 | 51" Axle Beam Weldment (5') |
| | 966763 | 53" Axle Beam Weldment (6') |
| 7 | 906346 | Right Hand Pulley Guard (4') |
| | 906353 | Right Hand Pulley Guard (5') |
| | 906355 | Right Hand Pulley Guard (6') |
| 8 | 906347 | Left Hand Pulley Guard (4') |
| | 906354 | Left Hand Pulley Guard (5') |
| | 906356 | Left Hand Pulley Guard (6') |
| 9 | 966749 | Discharge Shield (4') |
| | 966750 | Discharge Shield (5') |
| | 966751 | Discharge Shield (6') |
| 10 | 966724 | Roller Mount Bracket 10ga x 3 3/4" x 13 7/16" (4' & 5') |
| | 966182 | Roller Mount Bracket 7ga x 4" x 16 3/16" (6') |
| 11 | 966723 | Lift Bracket |
| 12 | 904250 | B-61 Belt (4') |
| | 904251 | B-70 Belt (5') |
| | 973506 | B-78 Belt (6') |
| 13 | 966722 | 12" Double Sheave complete with Set Screws |
| 14 | 966601 | Lift Pin Bushing 1 1/4" O.D. x 9/16" long |
| 15 | 966727 | Hitch Bushing 1" O.D. x 9/16" long |
| 16 | 966823 | Lift Pin complete with Nut & Washer (XL) (Cat. 1) |
| 17 | 965911 | 7/16" Linch Pin (1493) |
| 18 | 900929 | Pulley Key 1/4" Square x 1 5/8" long |
| 19 | 81570 | 5/16" B.S. Flat Washer (pl) |

| | | |
|----|---------|---|
| 20 | 86170 | 3/8" x 1" Hex Bolt (pl) |
| 21 | 86182 | 3/8" x 1 1/4" Carriage Bolt (pl) |
| 22 | 84000 | 3/8" B.S. Flat Washer (pl) |
| 23 | 81593 | 3/8" Lock Washer (pl) |
| 24 | 81592 | 3/8" Hex Nut (pl) |
| 25 | 84217 | 3/8" Wing Nut (pl) |
| 26 | 964001 | 1" x 7/16" I.D. x 10ga Flat Washer (pl) |
| 27 | 81628 | 1/2" x 3 1/4" Hex Bolt (pl) |
| 28 | 81637 | 1/2" Lock Washer (pl) |
| 29 | 81636 | 1/2" Hex Nut (pl) |
| 30 | 812769 | 1 1/2" O.D. x 9/16" I.D. x 10ga Washer (pl) |
| 31 | 84270 | 5/8" x 1 3/4" Hex Bolt (pl) |
| 32 | 81677 | 5/8" Lock Washer (pl) |
| 33 | 81676 | 5/8" Hex Nut (pl) |
| 34 | 84346 | 3/4" x 2 1/2" Hex Bolt (pl) |
| 35 | 812365 | 3/4" Lock Nut (pl) |
| 36 | 81700 | 3/4" Hex Nut (pl) |
| 37 | 9812377 | 5/16" x 3/4" Square Head Set Screw (pl) |
| 38 | 966758 | Hitch Weldment |
| 39 | 812364 | 1/2" Lock Nut (pl) |
| 40 | 966810 | Arm Spacer 1"OD x 1 13/16" |
| 41 | 81678 | 5/8" BS Flat Washer Standard (pl) |
| 42 | 965807 | Top Link Pin (Category 1) |
| 43 | 84277 | 1/2" x 1 1/2" Hex Bolt (pl) |
| 44 | 900931 | 1/4" Square x 1.11" Key |
| 45 | 81207 | 3/16" x 2" Cotter Pin |
| 46 | F0398 | PTO Shaft (4') |
| | F0399 | PTO Shaft (5' & 6') |
| 47 | 966855 | Wheel Yoke |
| 48 | 904244 | 3 3/4" Double Sheave complete with Set Screws (4') |
| | 904246 | 4 1/2" Double Sheave complete with Set Screws (5' & 6') |
| 49 | 904243 | 3 3/4" Single Sheave complete with Set Screws (4') |
| | 904245 | 4 1/2" Single Sheave complete with Set Screws (5' & 6') |
| 50 | 966731 | 1/2" long x 1 5/16" O.D. Bushing (pl) |
| 51 | 966730 | 1" long x 1 5/16" O.D. Bushing (pl) |
| 52 | 902614 | 3/4" x 6" Wheel Bolt (pl) |
| 53 | 900930 | 1/4" Square x 1 1/2" Key |
| 54 | 967164 | Pound-in Grease Nipple (pl) |
| 55 | 966729 | 3/16" Linch Pin (pl) |
| 56 | 811792 | 3/8" x 1 1/2" Hex Bolt (pl) |
| 57 | 966811 | Sheave Spacer 1 1/4" O.D. x .70" long |

| | | |
|----|-----------|---|
| 58 | 966190 | 5/8" Lock Washer (pl) Extra Heavy (Supplied with Spindle) |
| 59 | 84299 | 5/8" x 2" Hex Bolt (pl) |
| 60 | 81701 | 3/4" Lock Washer (pl) |
| 61 | 9812433 | 3/16" x 1 1/2" Cotter Pin (pl) |
| 62 | 966721 | Nylon Ends (4' & 5') |
| | 966177 | Nylon Ends (6') |
| 63 | 966725 | 3" O.D. x 4" Roller Tube (4' & 5') |
| | 966179 | 4" O.D. x 5 3/8" Roller Tube (6') |
| 64 | 811790 | 3/4" x 4 1/2" Hex Bolt (pl) |
| 65 | 966852 | 4.10/3.50-4 Tire with Wheel (4 1/2" Hub) |
| 66 | 966737 | 17 3/4" Standard Blade (4') |
| | 966719 | 21 3/4" Standard Blade (5') |
| | 966738 | 25 3/4" Standard Blade (6') |
| 67 | 966726 | 5/8" x 5 17/32" Roller Pin (4' & 5') |
| | 966180 | 5/8" x 7 1/16" Roller Pin (6') |
| 68 | 966189 | 5/8" x 1 1/4" Gr. 8 Hex Bolt Lock (Supplied with Spindle) |
| 69 | 966188 | 2 1/2" O.D. x 21/32" I.D. Washer (Supplied with Spindle) |
| 70 | 966759 | Pivot Bar 1/4" x 2" x 37" long (4') |
| | 966760 | Pivot Bar 1/4" x 2" x 40" long (5') |
| | 966761 | Pivot Bar 1/4" x 2" x 46" long (6') |
| 71 | 906339 | Spindle with Hardware |
| 72 | 912301558 | 1" Snap Ring |
| 73 | 905247 | 1" Washer & Slotted Hex Nut Weldment Inc. with Gearbox |
| 74 | 967140 | Narrow Rim Washer 1" x 10ga (pl) |
| 75 | 903488 | Roller Holder 1/4" x 4 5/32" x 18 1/4" |
| 76 | 903104 | Roller Pin 3/4" Dia x 8 3/4" Long |
| 77 | 903113 | Roller Tube Assembly |
| 78 | 9812434 | 1/4" x 1 1/2" Cotter Pin (pl) |
| 79 | 9812436 | 1/4" x 2 1/2" Cotter Pin (pl) |
| 80 | 81545 | 1/4" Lock Washer (pl) |
| 81 | 81544 | 1/4" Hex Nut (pl) |
| 82 | 81525 | 1/4" x 3/4" Hex Bolt (pl) |
| 83 | 81549 | 5/16" x 3/4" Hex Bolt (pl) |
| 84 | 81569 | 5/16" Lock Washer (pl) |
| 85 | 81568 | 5/16" Hex Nut (pl) |
| 86 | 909277 | Manual Holder |

FINISHING MOWER (4' REAR DISCHARGE)



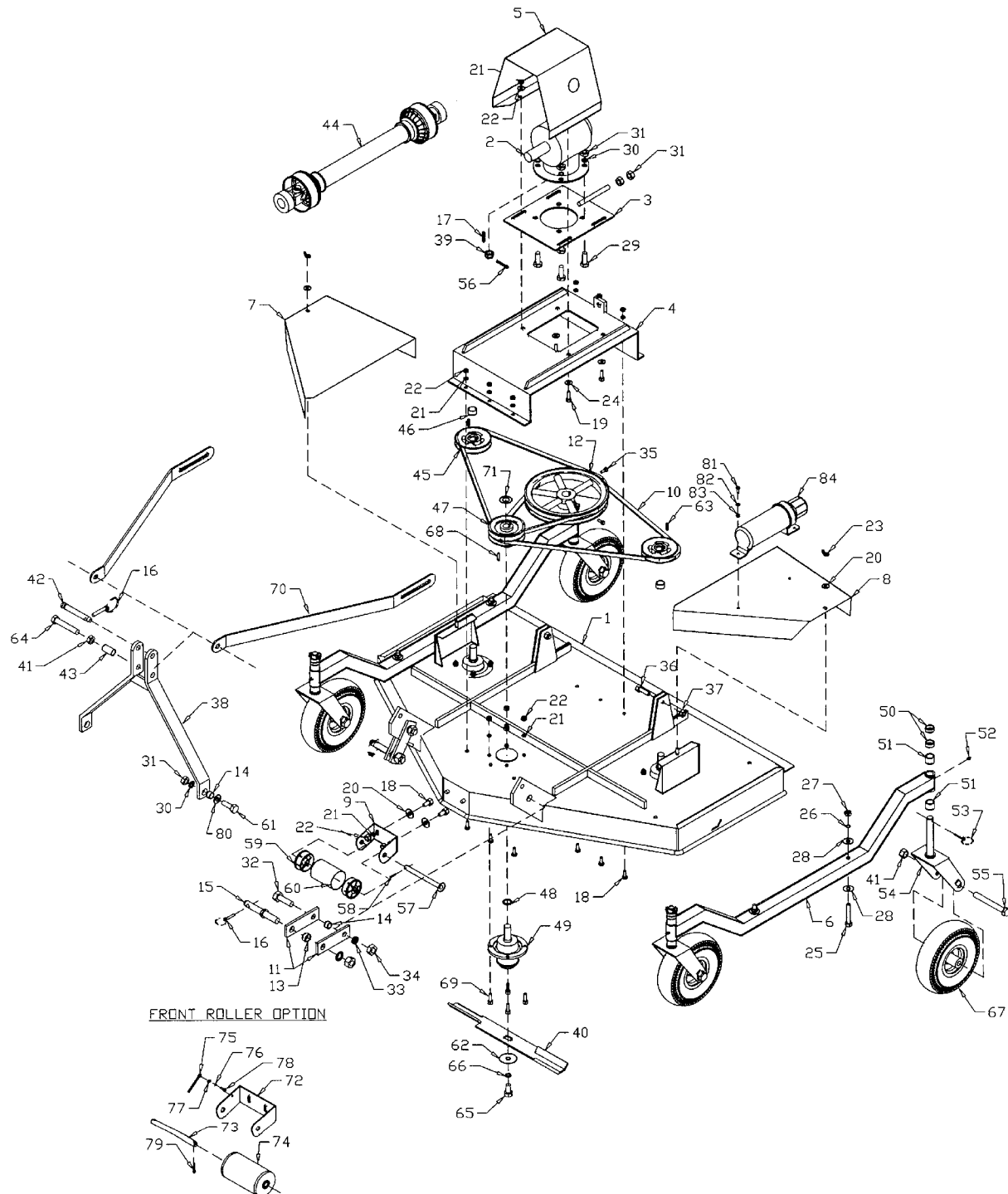
FM-02

4' REAR DISCHARGE FINISHING MOWER

| ITEM | PART # | DESCRIPTION |
|------|-----------|--|
| 1 | 903815 | Deck Weldment (4') |
| 2 | 912300158 | Gearbox (Without Oil) |
| 3 | 980004200 | Gearbox Base Plate |
| 4 | 906342 | Gearbox Mount Plate |
| 5 | 966748 | PTO Guard |
| 6 | 903804 | 53" Axle Beam Weldment |
| 7 | 906346 | Right Hand Pulley Guard |
| 8 | 906347 | Left Hand Pulley Guard |
| 9 | 966724 | Roller Holder 10ga x 3 3/4" x 13 7/16" |
| 10 | 904250 | B-61 Belts |
| 11 | 966723 | Lift Bracket |
| 12 | 966722 | 12" Double Sheave complete with Set Screws |
| 13 | 966601 | Lift Pin Bushing (1 1/4" O.D. x 9/16" Long) |
| 14 | 966727 | Hitch Bushing (1" O.D. x 9/16" Long) |
| 15 | 966823 | Lift Pin complete with Nut & Washer (XL) (Cat. 1) |
| 16 | 965911 | 7/16" Linch Pin (1493) |
| 17 | 900929 | Pulley Key (1/4" square x 1 5/8" Long) |
| 18 | 86170 | 3/8" x 1" Hex Bolt (pl) |
| 19 | 86182 | 3/8" x 1 1/4" Carriage Bolt (pl) |
| 20 | 84000 | 3/8" B.S. Flat Washer (pl) |
| 21 | 81593 | 3/8" Lock Washer (pl) |
| 22 | 81592 | 3/8" Hex Nut (pl) |
| 23 | 84217 | 3/8" Wing Nut (pl) |
| 24 | 964001 | 1"O.D. x 7/16" I.D.x 10ga Flat Washer (pl) |
| 25 | 81628 | 1/2" x 3 1/4" Hex Bolt (pl) |
| 26 | 81637 | 1/2" Lock Washer (pl) |
| 27 | 81636 | 1/2" Hex Nut (pl) |
| 28 | 812769 | 1 1/2" O.D. x 9/16" I.D. x 10ga Washer (pl) |
| 29 | 84270 | 5/8" x 1 3/4" Hex Bolt (pl) |
| 30 | 81677 | 5/8" Lock Washer (pl) |
| 31 | 81676 | 5/8" Hex Nut (pl) |
| 32 | 84346 | 3/4" x 2 1/2" Hex Bolt (pl) |
| 33 | 81701 | 3/4" Lock Washer (pl) |
| 34 | 81700 | 3/4" Hex Nut (pl) |
| 35 | 9812377 | 5/16" x 3/4" Square Head Set Screw (pl) |
| 36 | 84277 | 1/2" x 1 1/2" Hex Bolt (pl) |
| 37 | 812364 | 1/2" Lock Nut (pl) |
| 38 | 966758 | Hitch Weldment |
| 39 | 905247 | 1"ID Washer & Slotted Hex Nut Weldment Included with Gearbox |
| 40 | 966737 | 17 3/4" Standard Blade |

| | | |
|----|-----------|---|
| 41 | 812365 | 3/4" Lock Nut (pl) |
| 42 | 965807 | Top Link Pin (Cat. 1) |
| 43 | 966810 | Arm Spacer 1" O.D. x 1 13/16" |
| 44 | F0398 | PTO Shaft |
| 45 | 904243 | 3 3/4" Single Sheave Assembly (machined end up) |
| 46 | 966811 | Sheave Spacer 1 1/4" O.D. x .70" Long |
| 47 | 904244 | 3 3/4" Double Sheave complete with Set Screws |
| 48 | 912301558 | 1" Snap Ring |
| 49 | 906339 | Spindle with Hardware |
| 50 | 966731 | 1/2" long x 1 5/16" O.D. Bushing (pl) |
| 51 | 966730 | 1" long x 1 5/16" O.D. Bushing (pl) |
| 52 | 967164 | Pound-in Grease Nipple |
| 53 | 966729 | 3/16" Linch Pin (pl) |
| 54 | 966855 | Wheel Yoke |
| 55 | 902614 | 3/4" x 6" Wheel Bolt (pl) |
| 56 | 81207 | 3/16" x 2" Cotter Pin (br) |
| 57 | 966726 | 5/8" x 5 17/32" Roller Pin |
| 58 | 9812433 | 3/16" x 1 1/2" Cotter Pin (pl) |
| 59 | 966721 | Nylon End |
| 60 | 966725 | Roller Tube 3" O.D. x 4" Long |
| 61 | 84299 | 5/8" x 2" Hex Bolt (pl) |
| 62 | 966188 | 2 1/2" O.D. x 21/32" I.D. Washer (Supplied with Spindle) |
| 63 | 900931 | 1/4" Square x 1.11" Key |
| 64 | 811790 | 3/4" x 4 1/2" Hex Bolt (pl) |
| 65 | 966189 | 5/8" x 1 1/4" Gr. 8 Hex Bolt Lock (Supplied with Spindle) |
| 66 | 966190 | 5/8" Lock Washer (pl) Extra Heavy (Supplied with Spindle) |
| 67 | 966852 | 4.10 x 3.50-4 Tire with Wheel |
| 68 | 900930 | 1/4" x 1 1/2" Key |
| 69 | 811792 | 3/8" x 1 1/2" Hex Bolt (pl) |
| 70 | 966759 | Pivot Bar 37" Long |
| 71 | 967140 | 1" x 10ga Narrow Rim Washer (pl) |
| 72 | 903488 | Roller Holder 1/4" x 4 5/32" x 18 1/4" Long |
| 73 | 903104 | Roller Pin 3/4" Dia. X 8 3/4" Long |
| 74 | 903113 | Front Roller Assembly |
| 75 | 9812436 | 1/4" x 2 1/2" Cotter Pin (pl) |
| 76 | 81545 | 1/4" Lock Washer (pl) |
| 77 | 81544 | 1/4" Hex Nut (pl) |
| 78 | 81525 | 1/4" x 3/4" Hex Bolt (pl) |
| 79 | 9812434 | 1/4" x 1 1/2" Cotter Pin (pl) |
| 80 | 81678 | 5/8" BS Flat Washer Standard (pl) |
| 81 | 81549 | 5/16" x 3/4" Hex Bolt (pl) |
| 82 | 81569 | 5/16" Lock Washer (pl) |
| 83 | 81568 | 5/16" Hex Nut (pl) |
| 84 | 909277 | Manual Holder |

FINISHING MOWER (5', 6' & 7' REAR DISCHARGE)



FM-03

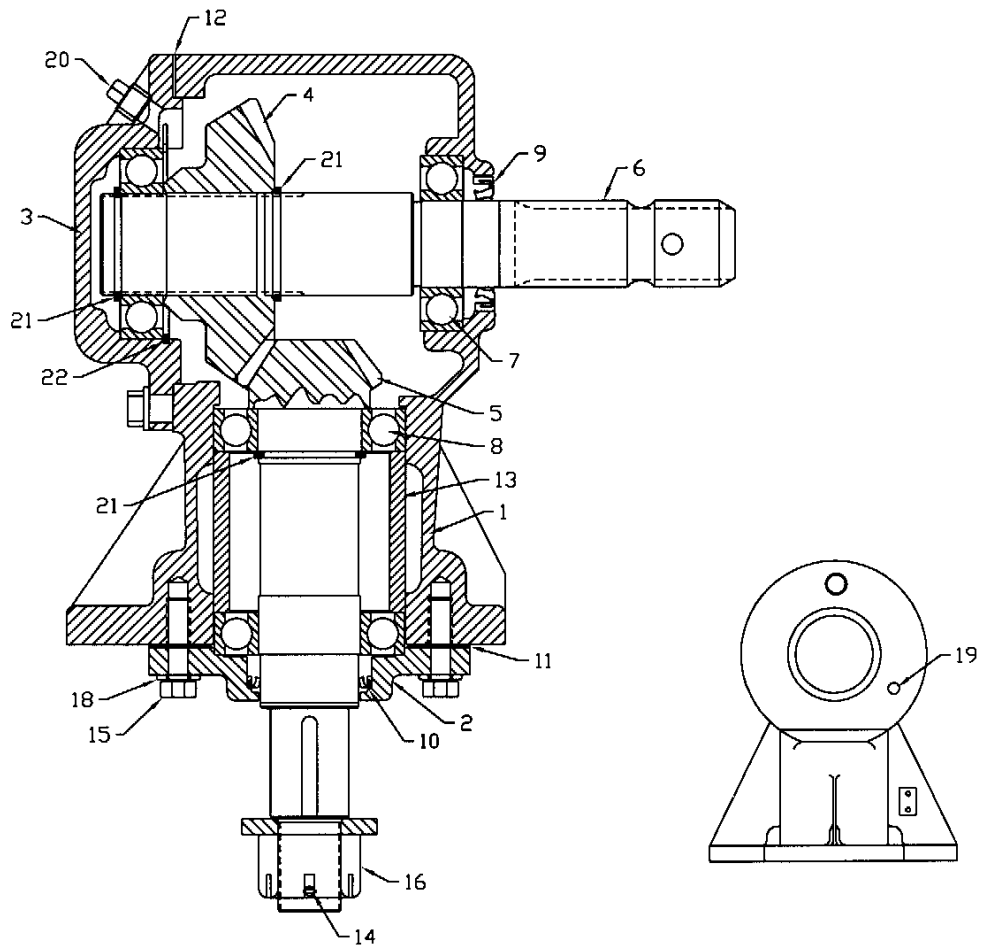
5', 6', & 7' REAR DISCHARGE FINISHING MOWER

| ITEM | PART # | DESCRIPTION |
|------|-----------|---|
| 1 | 902667 | Deck Weldment (5') |
| | 902668 | Deck Weldment (6') |
| | 902669 | Deck Weldment (7') |
| 2 | 912300158 | Gearbox (Without Oil) |
| 3 | 980004200 | Gearbox Base Plate |
| 4 | 906343 | Gearbox Mount Plate |
| 5 | 966748 | PTO Guard |
| 6 | 966283 | 56 1/2" Axle Beam Weldment (5') |
| | 966284 | 58 1/2" Axle Beam Weldment (6') |
| | 966857 | 70" Axle Beam Weldment (7') |
| 7 | 906353 | Right Hand Pulley Guard (5') |
| | 906355 | Right Hand Pulley Guard (6') |
| | 902269 | Right Hand Pulley Guard (7') |
| 8 | 906354 | Left Hand Pulley Guard (5') |
| | 906356 | Left Hand Pulley Guard (6') |
| | 902268 | Left Hand Pulley Guard (7') |
| 9 | 966724 | Roller Holder 10ga x 3 3/4" x 13 7/16" (5') |
| | 966182 | Roller Holder 7ga x 4" x 16 3/16" (6' & 7') |
| 10 | 904251 | B-70 Belts (5') |
| | 973506 | B-78 Belts (6') |
| | 973248 | B-87 Belts (7') |
| 11 | 966723 | Lift Bracket |
| 12 | 966722 | 12" Double Sheave complete with Set Screws |
| 13 | 966601 | Lift Pin Bushing (1 1/4" O.D. x 9/16" Long) |
| 14 | 966727 | Hitch Bushing (1" O.D. x 9/16" Long) |
| 15 | 966823 | Lift Pin complete with Nut & Washer (XL) (Cat. 1) |
| 16 | 965911 | 7/16" Linch Pin (1493) |
| 17 | 900929 | Pulley Key (1/4" square x 1 5/8" Long) |
| 18 | 86170 | 3/8" x 1" Hex Bolt (pl) |
| 19 | 86182 | 3/8" x 1 1/4" Carriage Bolt (pl) |
| 20 | 84000 | 3/8" B.S. Flat Washer (pl) |
| 21 | 81593 | 3/8" Lock Washer (pl) |
| 22 | 81592 | 3/8" Hex Nut (pl) |
| 23 | 84217 | 3/8" Wing Nut (pl) |
| 24 | 964001 | 1"O.D. x 7/16" I.D. x 10ga Flat Washer (pl) |
| 25 | 81628 | 1/2" x 3 1/4" Hex Bolt (pl) |
| 26 | 81637 | 1/2" Lock Washer (pl) |
| 27 | 81636 | 1/2" Hex Nut (pl) |
| 28 | 812769 | 1 1/2" O.D. x 9/16" I.D. x 10ga Washer (pl) |
| 29 | 84270 | 5/8" x 1 3/4" Hex Bolt (pl) |
| 30 | 81677 | 5/8" Lock Washer (pl) |

| | | |
|----|-----------|---|
| 31 | 81676 | 5/8" Hex Nut (pl) |
| 32 | 84346 | 3/4" x 2 1/2" Hex Bolt (pl) |
| 33 | 81701 | 3/4" Lock Washer (pl) |
| 34 | 81700 | 3/4" Hex Nut (pl) |
| 35 | 9812377 | 5/16" x 3/4" Square Head Set Screw (pl) |
| 36 | 84277 | 1/2" x 1 1/2" Hex Bolt (pl) |
| 37 | 812364 | 1/2" Lock Nut (pl) |
| 38 | 966758 | Hitch Weldment |
| 39 | 905247 | 1" I.D. Washer & Slotted Hex Nut Weldment Inc. with Gearbox |
| 40 | 966719 | 21 3/4" Standard Blade (5') |
| | 966738 | 25 3/4" Standard Blade (6') |
| | 966167 | 29 3/4" Hard Surfaced Blade (7') |
| 41 | 812365 | 3/4" Lock Nut (pl) |
| 42 | 965807 | Top Link Pin (Cat. 1) |
| 43 | 966810 | Arm Spacer 1" O.D. x 1 13/16" (5' & 6') |
| | 966287 | Arm Spacer 1" O.D. x 1 9/16" (7') |
| 44 | F0399 | PTO Shaft (5' & 6') |
| | F0400 | PTO Shaft (7') |
| 45 | 904245 | 4 1/2" Single Sheave Assembly (machined end up) (5' & 6') |
| | 904247 | 5 1/4" Single Sheave Assembly (machined end up) (7') |
| 46 | 966811 | Sheave Spacer 1 1/4" O.D. x .70" Long |
| 47 | 904246 | 4 1/2" Double Sheave complete with Set Screws (5' & 6') |
| | 904248 | 5 1/4" Double Sheave complete with Set Screws (7') |
| 48 | 912301558 | 1" Snap Ring |
| 49 | 906339 | Spindle with Hardware (5' & 6') |
| | 966860 | Spindle with Hardware (7') |
| 50 | 966731 | 1/2" Long x 1 5/16" O.D. Bushing (pl) |
| 51 | 966730 | 1" Long x 1 5/16" O.D. Bushing (pl) |
| 52 | 967164 | Pound-in Grease Nipple |
| 53 | 966729 | 3/16" Linch Pin (pl) |
| 54 | 966855 | Wheel Yoke (5' & 6') |
| | 966856 | Wheel Yoke (7') |
| 55 | 902614 | 3/4" x 6" Wheel Bolt (pl) (5' & 6') |
| | 902615 | 3/4" x 7" Wheel Bolt (pl) (7') |
| 56 | 81207 | 3/16" x 2" Cotter Pin (br) |
| 57 | 966726 | 5/8" x 5 17/32" Roller Pin (5') |
| | 966180 | 5/8" x 7 1/16" Roller Pin (6' & 7') |
| 58 | 9812433 | 3/16" x 1 1/2" Cotter Pin (pl) |
| 59 | 966721 | Nylon End (5') |
| | 966177 | Nylon End (6' & 7') |
| 60 | 966725 | Roller Tube 3" O.D. x 4" Long (5') |
| | 966179 | Roller Tube 4" O.D. x 5 3/8" Long (6' & 7') |
| 61 | 84299 | 5/8" x 2" Hex Bolt (pl) |
| 62 | 966188 | 2 1/2" O.D. x 21/32" I.D. Washer (Supplied with Spindle) |
| 63 | 900931 | 1/4" Square x 1.11" Key |

| | | |
|----|---------|---|
| 64 | 811790 | 3/4" x 4 1/2" Hex Bolt (pl) |
| 65 | 966189 | 5/8" x 1 1/4" Grade 8 Hex Bolt Lock (Supplied with Spindle) |
| 66 | 966190 | 5/8" Lock Washer (pl) Extra Heavy (Supplied with Spindle) |
| 67 | 966852 | 4.10 x 3.50-4 Tire with Wheel (5' & 6') |
| | 966851 | 13/500 x 6" Tire with Wheel (7') |
| 68 | 900930 | 1/4" x 1 1/2" Key |
| 69 | 811792 | 3/8" x 1 1/2" Hex Bolt (pl) |
| 70 | 966760 | Pivot Bar 40" Long (5') |
| | 966761 | Pivot Bar 46" Long (6') |
| | 966282 | Pivot Bar 51" Long (7') |
| 71 | 967140 | 1" x 10ga Narrow Rim Washer (pl) |
| 72 | 903488 | Roller Holder 1/4" x 4 5/32" x 18 1/4" Long |
| 73 | 903104 | Roller Pin 3/4" Dia. X 8 3/4" Long |
| 74 | 903113 | Front Roller Assembly |
| 75 | 9812436 | 1/4" x 2 1/2" Cotter Pin (pl) |
| 76 | 81545 | 1/4" Lock Washer (pl) |
| 77 | 81544 | 1/4" Hex Nut (pl) |
| 78 | 81525 | 1/4" x 3/4" Hex Bolt (pl) |
| 79 | 9812434 | 1/4" x 1 1/2" Cotter Pin (pl) |
| 80 | 81678 | 5/8" BS Flat Washer Standard (pl) |
| 81 | 81549 | 5/16" x 3/4" Hex Bolt (pl) |
| 82 | 81569 | 5/16" Lock Washer (pl) |
| 83 | 81568 | 5/16" Hex Nut (pl) |
| 84 | 909277 | Manual Holder |

FINISHING MOWER GEARBOX

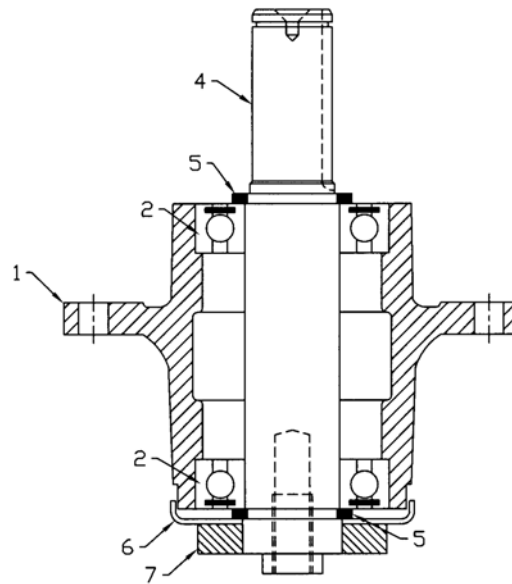
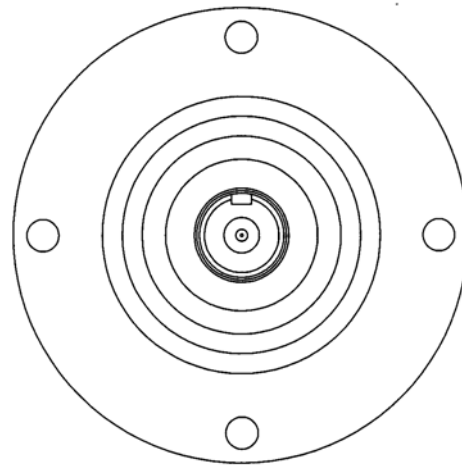


912300158

FINISHING MOWER GEARBOX PARTS LIST

| Item # | Part # | Description |
|--------|-----------|-------------------------|
| | 912300158 | Gearbox Complete |
| 1 | 966813 | Housing |
| 2 | 914015 | Output Cap |
| 3 | 966814 | Blank Cap |
| 4 | 966815 | Input Gear, 29T |
| 5 | 966816 | Pinion Gear, 15T |
| 6 | 966817 | Input Shaft |
| 7 | 966542 | Ball Bearing, 6207 |
| 8 | 966555 | Ball Bearing, 6208 |
| 9 | 966818 | Input Seal |
| 10 | 966819 | Output Seal |
| 11 | 914019 | Output Gasket |
| 12 | 914007 | Input Gasket |
| 13 | 914001 | Spacer |
| 14 | 966562 | Cotter Pin |
| 15 | 86171 | 3/8" x 1 1/4" Hex Bolt |
| 16 | 905247 | 1" NF Hex Nut W/Washer |
| 18 | 81593 | 3/8" Lock Washer |
| 19 | 914016 | 1/8" Sq. Hd. Solid Plug |
| 20 | 966193 | 1/4" Vented Plug |
| 21 | 914008 | Retaining Ring |
| 22 | 914003 | Retaining Ring |

FINISHING MOWER SPINDLE ASSEMBLY



FM-63

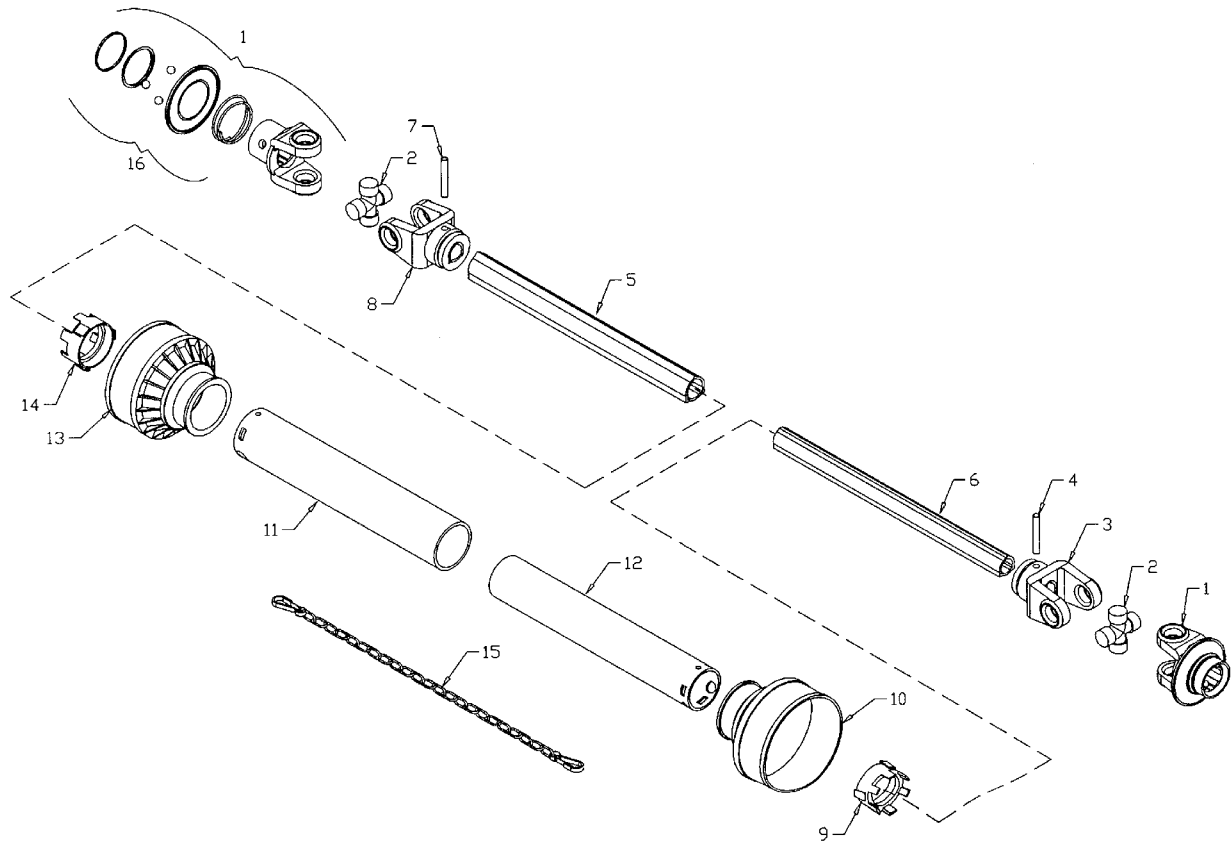
FINISHING MOWER SPINDLE PARTS LIST (4', 5' & 6' SIDE AND REAR)

| Item # | Part # | Description |
|--------|-----------|--|
| | 906339 | Spindle Assembly Complete (Includes Hardware) |
| 1 | 966764 | Spindle Housing |
| 2 | 906399 | Spindle Bearing, 6206-Z |
| 3 | 912301558 | Snap Ring |
| 4 | 906394 | Spindle Shaft |
| 5 | 966769 | Snap Ring |
| 6 | 966820 | Shield |
| 7 | 966821 | Blade Mount Base |

FINISHING MOWER SPINDLE PARTS LIST (7' REAR) (ALL SIZE HEAVY DUTY & TRIPLEX)

| Item # | Part # | Description |
|--------|-----------|--|
| | 966860 | Spindle Assembly Complete (Includes Hardware) |
| 1 | 966862 | Spindle Housing |
| 2 | 966863 | Spindle Bearing (63067) |
| 3 | 912301558 | Snap Ring |
| 4 | 906394 | Spindle Shaft |
| 5 | 966769 | Snap Ring |
| 6 | 966865 | Shield |
| 7 | 966821 | Blade Mount Base |

FINISHING MOWER PTO SHAFT (STANDARD & OPTIONAL HEAVY DUTY)



FM-44

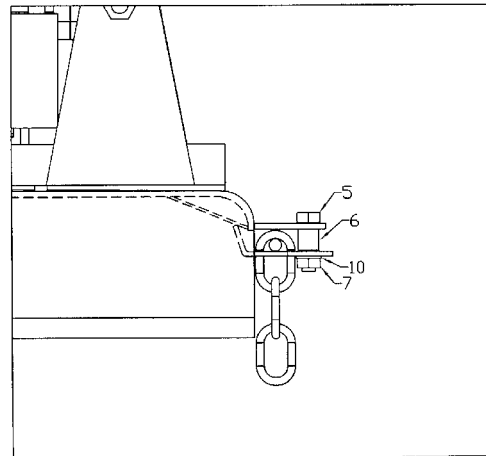
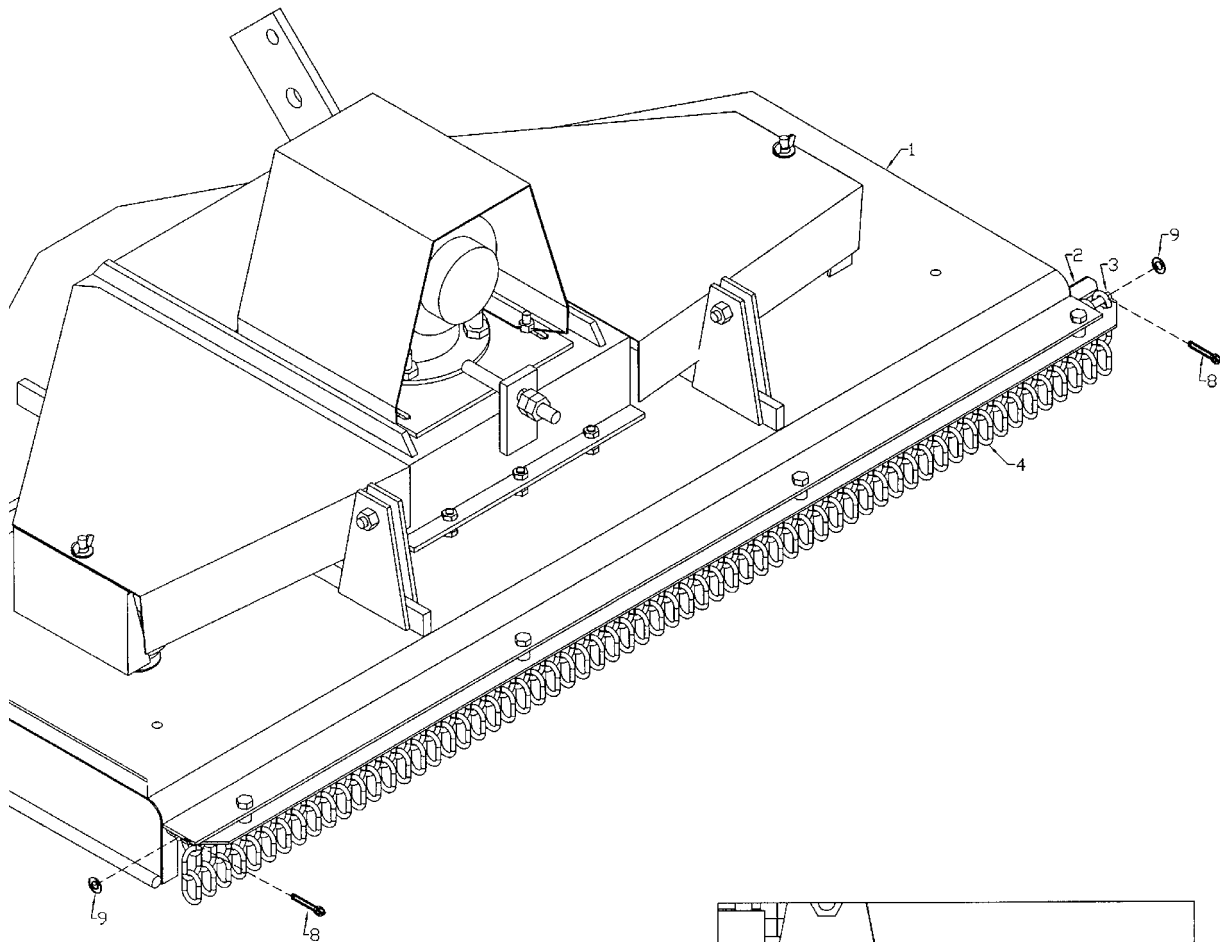
FINISHING MOWER PTO SHAFT PARTS LIST

| Item # | Part # | Description |
|--------|---------|--|
| | F0398 | Shaft Complete - 4' |
| | F0399 | Shaft Complete - 5' & 6' |
| | F0400 | Shaft Complete - 7' |
| | F0401 | Shaft Complete - Optional Heavy Duty for 5' & 6' |
| 1 | 907288 | Yoke - 4', 5' & 6' |
| | 907290 | Yoke - 7' & Heavy Duty |
| 2 | 930-106 | Repair Kit - 4', 5' & 6' |
| | 920-002 | Repair Kit - 7' & Heavy Duty |
| 3 | 930-105 | Outer Tube Yoke - 4', 5' & 6' |
| | 920-004 | Outer Tube Yoke - 7' & Heavy Duty |
| 4 | 930-109 | Flexible Pin - 4', 5' & 6' |
| | 936351 | Flexible Pin - 7' & Heavy Duty |
| 5 | 936298 | Outer Cardan Tube - 4' |
| | 930-108 | Outer Cardan Tube - 5' & 6' |
| | 936403 | Outer Cardan Tube - 7' |
| | 936404 | Outer Cardan Tube - Heavy Duty |
| 6 | 936299 | Inner Cardan Tube - 4' |
| | 930-107 | Inner Cardan Tube - 5' & 6' |
| | 936405 | Inner Cardan Tube - 7' |
| | 936406 | Inner Cardan Tube - Heavy Duty |
| 7 | 930-104 | Flexible Pin - 4' |
| | 930-109 | Flexible Pin - 7' & Heavy Duty |
| 8 | 930-115 | Inner Tube Yoke - 4', 5' & 6' |
| | 920-003 | Inner Tube Yoke - 7' & Heavy Duty |
| 9 | 930-110 | Outer Shield Retainer - 4', 5', & 6' |
| | 920-013 | Outer Bearing - 7' & Heavy Duty |
| 10 | 936300 | Outer Cone Set - 4', 5' & 6' |
| 11 | 936301 | Outer Shield - 4' |
| | 936302 | Outer Shield - 5' & 6' |
| | 936407 | Outer Safety Tube - 7' |
| | 936408 | Outer Safety Tube - Heavy Duty |
| 12 | 936303 | Inner Shield - 4' |
| | 936304 | Inner Shield - 5' & 6' |
| | 936409 | Inner Safety Tube - 7' |
| | 936410 | Inner Safety Tube - Heavy Duty |
| 13 | 936305 | Inner Cone Set - 4', 5', 6', 7' & Heavy Duty |
| 14 | 930-113 | Inner Shield Collar - 4', 5' & 6' |
| | 920-015 | Inner Shield Bearing - 7' & Heavy Duty |
| 15 | 936402 | Safety Chain - All |
| 16 | 908244 | Ball Collar Kit - All |

Rear Discharge Finishing Mower Chain Kit

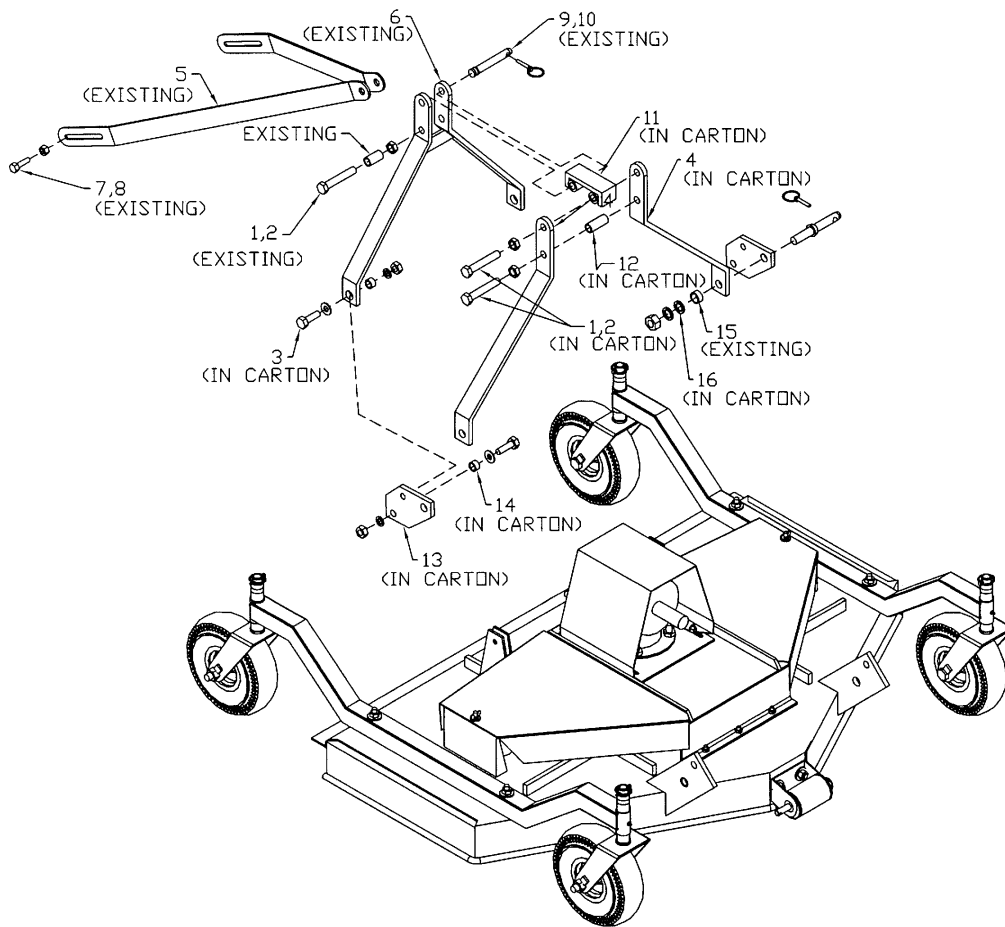
| Item # | Part # | Description |
|--------|---------|-------------------------------------|
| 1 | 903815 | 4' Deck Weldment |
| | 902667 | 5' Deck Weldment |
| | 902668 | 6' Deck Weldment |
| | 902669 | 7' Deck Weldment |
| 2 | 905166 | 50 1/4" Chain Guard Plate (4') |
| | 902820 | 62 1/4" Chain Guard Plate (5') |
| | 902823 | 74 1/4" Chain Guard Plate (6') |
| | 902825 | 86 1/4" Chain Guard Plate (7') |
| 3 | 905167 | 50 3/8" Long Chain Kit Rod (4') |
| | 902827 | 62 3/8" Long Chain Kit Rod (5') |
| | 902828 | 74 3/8" Long Chain Kit Rod (6') |
| | 902829 | 86 3/8" Long Chain Kit Rod (7') |
| 4 | 967907 | 1/4" X 3 Link Chain (pl) |
| 5 | 811792 | 3/8" X 1 1/2" Hex Bolt (pl) |
| 6 | 902821 | Spacer 5/8" O.D. X 12Ga X 5/8" Long |
| 7 | 81592 | 3/8" Hex Nut (pl) |
| 8 | 9812430 | 1/8" X 1" Cotter Pin (pl) |
| 9 | 84039 | 3/8" SAE Washer (pl) |
| 10 | 81593 | 3/8" Lock Washer (pl) |

MOWER CHAIN KIT ASSEMBLY



FM-43

QUICK HITCH KIT DRAWING AND PARTS LIST



| # | PART # | DESCRIPTION | QTY |
|----|--------|--------------------------------------|-----|
| 1 | 811790 | 3/4" X 4 1/2" HEX BOLT (PL) | 3 |
| 2 | 812365 | 3/4" LOCK NUT (PL) | 3 |
| 3 | 84335 | 5/8" X 2 1/2" HEX BOLT (PL) | 2 |
| 4 | 909242 | HITCH ARM 1/2" X 2" X 24 3/4" LG | 2 |
| 5 | 966759 | PIVOT BAR 1/4" X 2" X 37" (4') | 2 |
| | 966760 | PIVOT BAR 1/4" X 2" X 40" (5') | 2 |
| | 966761 | PIVOT BAR 1/4" X 2" X 46" (6') | 2 |
| | 966282 | PIVOT BAR 3/8" X 2" X 51" (7') | 2 |
| 6 | 966758 | HITCH WELDMENT | 1 |
| 7 | 84277 | 1/2" X 1 1/2" HEX BOLT (PL) | 2 |
| 8 | 812364 | 1/2" LOCK NUT (PL) | 2 |
| 9 | 965807 | TOP LINK PIN (CAT 1) | 1 |
| 10 | 965911 | 7/16" LINCH PIN | 3 |
| 11 | 909243 | ADAPTOR WELDMENT | 1 |
| 12 | 909239 | 1"Ø X 2 3/8" SPACER | 1 |
| 13 | 909237 | ADAPTOR PLATE 1/2" X 4 1/2" X 6 1/2" | 2 |
| 14 | 909241 | 1"Ø X 7/16" SPACER | 2 |
| 15 | 966601 | 1 1/4" X 9/16" SPACER | 2 |
| 16 | 81972 | 7/8" FLAT WASHER (PL) | 2 |

SHIPPING KIT AND BUNDLE NUMBERS

The following is a list of Kit Numbers for this product and the Bundle Numbers, Descriptions, and Quantities for each Kit.

QUANTITY BUNDLE NO. DESCRIPTION**Y450S 48" SIDE DISCHARGE FINISHING MOWER**

| | | |
|---|-------|----------------|
| 1 | F0681 | Mower |
| 1 | F6568 | Carton w/tires |

Y550S 60" SIDE DISCHARGE FINISHING MOWER

| | | |
|---|-------|----------------|
| 1 | F0683 | Mower |
| 1 | F6568 | Carton w/tires |

Y650S 72" SIDE DISCHARGE FINISHING MOWER

| | | |
|---|-------|----------------|
| 1 | F0685 | Mower |
| 1 | F6568 | Carton w/tires |

Y450R 48" REAR DISCHARGE FINISHING MOWER

| | | |
|---|-------|----------------|
| 1 | F0682 | Mower |
| 1 | F6568 | Carton w/tires |

Y550R 60" REAR DISCHARGE FINISHING MOWER

| | | |
|---|-------|----------------|
| 1 | F0684 | Mower |
| 1 | F6568 | Carton w/tires |

Y650R 72" REAR DISCHARGE FINISHING MOWER

| | | |
|---|-------|----------------|
| 1 | F0686 | Mower |
| 1 | F6568 | Carton w/tires |

Y750R 84" REAR DISCHARGE FINISHING MOWER

| | | |
|---|-------|----------------|
| 1 | F0687 | Mower |
| 1 | F6569 | Carton w/tires |

OPTIONAL BUNDLE NUMBERS

The following is a list of options available for the Kits listed above.

| | |
|--------|--|
| F0401 | Heavy Duty PTO Shaft (5' & 6') |
| 903798 | Hard Surfaced Blade (4') |
| 966273 | Hard Surfaced Blade (5') |
| 966274 | Hard Surfaced Blade (6') |
| F6589 | Solid Rubber Tires (4', 5' & 6') |
| F9459 | UHMW High Density Poly Roller Assembly |
| Y410 | Chain Kit (4') |
| Y510 | Chain Kit (5') |
| Y610 | Chain Kit (6') |
| Y710 | Chain Kit (7') |
| Y730 | Quick Hitch Adaptor Kit (all sizes) |
| F0840 | Solid Rubber Tires (set of 4) |

NOTES

NOTES

NOTES

DIVISION LOCATIONS

Farm King Division
301 Mountain Street S.
Morden, MB R6M 1X7
Ph.: (204) 822-4467
Fax: (204) 822-6348

Allied/Inland Division
1260 Clarence Avenue
Winnipeg, MB R3T 1T2
Ph.: (204) 284-6100
Fax: (204) 477-2325

B.I.I. Division
1330 43rd Street N.W.
Fargo, ND 58102
Ph: (701) 282-7014
Fax: (701) 282-5865

U.S. WAREHOUSES

AR, West Memphis
(870) 732-3132

GA, Stone Mountain
(770) 908-9439

ID, Meridian
(208) 887-6006

IN, Clarksville
(812) 284-3376

KS, Wichita
(316) 265-9577

MN, Lakeville
(952) 469-5267

MT, Billings
(406) 248-7771

ND, Bismarck
(701) 223-1886

ND, Fargo
(701) 282-7003

NE, Blair
(402) 426-8211

OH, Youngstown
(330) 793-0862

OR, Beaverton
(503) 641-1865

SD, Huron
(605) 352-8616

TX, Houston
(713) 928-2632

UT, Salt Lake City
(801) 972-4321

WI, Portage
(608) 742-1370

CANADIAN WAREHOUSES

B.C., Abbotsford
(604) 864-2665

AB, Edmonton
(780) 962-6991

SK, Regina
(306) 781-2300

ON, Woodstock
(519) 539-0435

QC, Dorion
(450) 455-4840

OFFSHORE WAREHOUSES

Burando Hill
Katanning
W. Australia
011-618-98-214422

Chihuahua, Mexico
011-52-158-90306

John Kerr Equipment Ltd.
Wilcoxholm Farm
Linlithgow, W. Lothian
Scotland
011-441-506-842280

Skovde, Sweden
011-46-500-452651

Naestved, Denmark
011-45-557-29511

bühler

Buhler Manufacturing

**301 Mountain Street S.
Morden MB.
R6M 1X7
Ph.: (204) 822-4467
Fax: (204) 822-6348
www.buhler.com**