

Philips CPWBS154 ADSL Wireless Base Station

Before You Start

This Before You Start guide will help you get your ADSL Wireless Base Station set up and connected to the Internet quickly and easily. Just follow these steps:

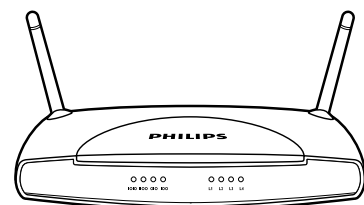
- Step 1: Check your package contents
- Step 2: Set up your ADSL Wireless Base Station
- Step 3: Configure Your PC for Dynamic Addressing
- Step 4: Configure Your Philips ADSL Wireless Base Station
- Step 5: Configure Wireless Security (recommended)

> > > Before you install the unit, check that your ADSL line is working correctly on the phone socket where you plan to connect your Wireless Basestation + ADSL Modem. Make sure that you have properly installed a splitter (not included, refer to your Service Provider documentation).

Step 1

Check your package contents

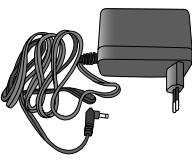
You should have all of these:



ADSL Wireless Base Station



Manual on CD



Power Supply



Black RJ-11 Telephone Cable



Before you start card



Grey RJ-45 Ethernet Cable

If you don't have everything, contact your supplier immediately.

2 Step 2

Set up your Wireless Basestation + ADSL Modem

1. Select a location for your Philips ADSL Wireless Base Station.

Install the ADSL Wireless Base Station near your PC or another location where you have easy access. Keep ethernet cables away from power cords and other sources of electrical interference. Place the ADSL Wireless Base Station, with the antennae in upright position, in a location where air can circulate freely around it.

2. Plug the Power Supply into an appropriate electrical outlet.

Connect the other end to the Power Input on the back side of the ADSL Wireless Base Station. Turn the power ON with the Off/On Switch. The LED light (PWR) should come on solid green.

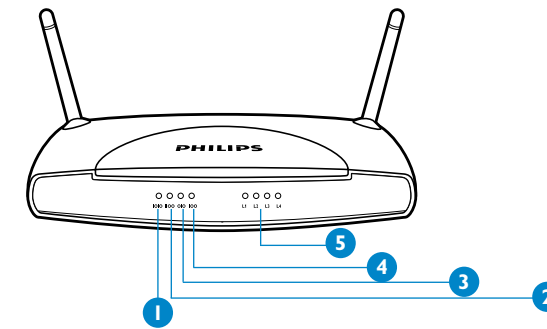
3. Connect the ADSL Wireless Base Station to your ADSL RJ11 wall jack.

Plug one end of the black RJ-11 Telephone Cable into the port labeled "ADSL" on the ADSL Wireless Base Station back panel until you feel it click. Insert the other end of the telephone cable into the telephone jack (or filter/ splitter) connected to your ADSL service. The ADSL light should blink for up to two minutes and then come on solid green.

4. Connect the Wireless Basestation + ADSL Modem to your computer

Connect one end of the RJ-45 Ethernet Cable to your PC's Ethernet port and the other end to one of the LAN ports of the ADSL Wireless Base Station. The LAN indicator light should come on solid green for the port where you connected your Ethernet cable.

CPWBS154 Front Panel System Messages



- | | |
|-------------------|--|
| 1. PWR | • Green when power is on |
| 2. ADSL | • Blinking green when initializing
• Green when initialized |
| 3. ON LINE | • Green when Link is Up
• Blinking when sending and receiving data |
| 4. WL | • Off = Wireless disabled
• On = Wireless enabled
• Blinking = Wireless traffic |
| 5. LAN 1, 2, 3, 4 | • Green when connected to each port on the LAN
• Blinking green when there is activity on each port |

3 Step 3

Configure your PC for Dynamic Addressing

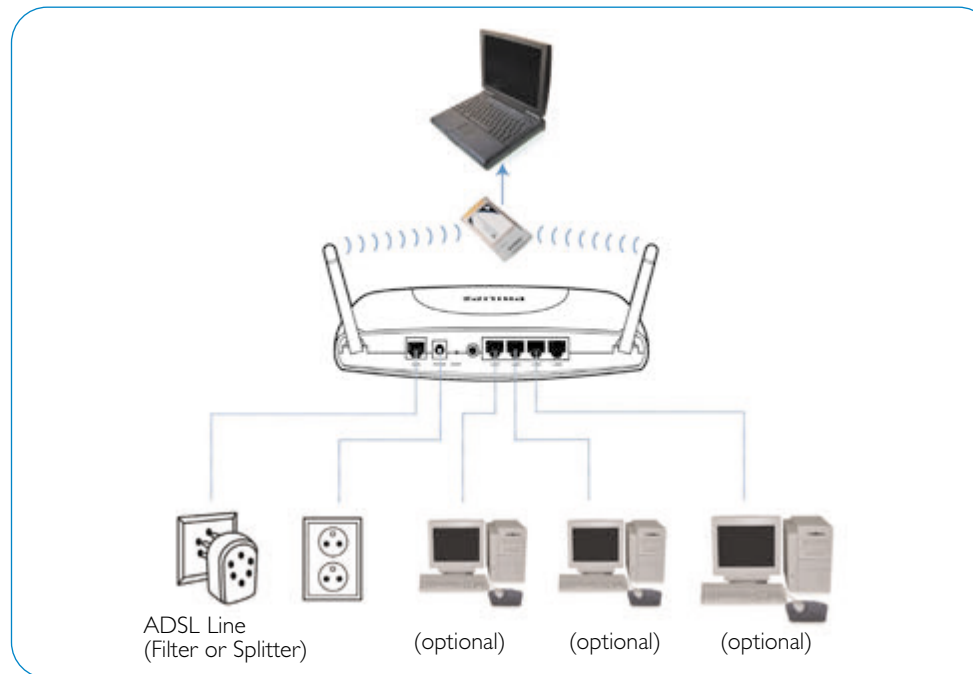
Repeat these steps for each computer that you want to connect to your ADSL Wireless Base Station. A maximum of four computers or devices may access the Internet via the ADSL Wireless Base Station at one time.

Microsoft Windows:

Step 1: Go to the TCP/ IP Properties settings on your computer by:

- | | |
|-----------------------------------|---|
| a). for Window 98, ME, and 2000 : | Start menu > Settings > Control Panel > Network (or Network and Dial-up Connections > Local Area Connection > Properties) > TCP/IP [your network card] or Internet protocol [TCP/IP] > Properties |
| b). for Window XP Click | Start menu > Control Panel > Network and Internet Connections > Network Connection > Local Area Connection > Properties > Internet protocol [TCP/IP] > Properties |

CPWBS154 Rear View



Connect each computer or other device in your network to the ADSL Wireless Base Station with an Ethernet cable or wirelessly.

A maximum of four computers or devices may access the Internet via the ADSL Wireless Base Station at one time

LAN port 4 is not in use

Configure Your PC for Dynamic Addressing

- Step 2: Select "Obtain an IP address automatically".
- Step 3: Select "Obtain DNS server address automatically", if available.
- Step 4: Remove any previously configured Gateways, if available.
- Step 5: Click OK. Restart if prompted.

Proceed to the next section 'Step 4: Configure Your Philips ADSL Wireless Base Station'

Macintosh Mac OS 9.2 and higher or Mac OS X 10.1.5 or higher:

Step 1: Access the TCP/ IP or Network control panel.

a. Mac OS 9 follows a path like this: Apple Menu > Control Panels > TCP/IP Control Panel

a. Mac OS X follows a path like this: Apple Menu > System Preferences > Network

Step 2: Select Built-in Ethernet.

Step 3: Select Configure Using DHCP.

Step 4: Close and Save, if prompted.

4 Step 4

Configure your ADSL Wireless Base Station

1. Open your Web browser (e.g. Netscape or Internet Explorer) from the computer that is connected to the Wireless Basestation + ADSL Modem.

Enter <http://192.168.1.1> in the URL Address text box and press the Enter key. In case The Philips ADSL Wireless Base Station displays the Login Screen, click the "Login" button (leave the Password field blank) to proceed to the Quickstart page.

2. The Philips ADSL Wireless Base Station displays the Quickstart Web page.

Enter the Username and Password supplied by your Internet Service Provider.

3. Enable Wireless

The wireless function is enabled by default. If you want to disable the wireless function of the Wireless Base Station + ADSL Modem, you can uncheck the "Enable Wireless" checkbox.

4. Enable Broadcast

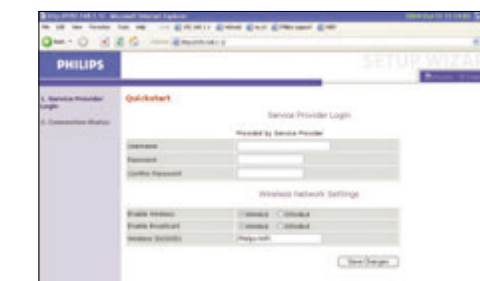
The ADSL Wireless Base Station broadcasts its Wireless ID by default. This means that the SSID will appear as an available network when scanned for by wireless-enabled devices. If you uncheck this checkbox, you must manually type in the identical SSID in your wireless devices in order to connect to the ADSL Wireless Base Station network.

5. Wireless ID (SSID)

The Wireless ID is preset to "Philips WiFi". You can either leave it as is, or change it. On client PCs' software, this might also be called the Network Name. The Wireless ID is used to identify this particular wireless network. Please refer to the manual of your wireless client on how to connect to the ADSL Wireless Base Station.

6. Click the "Save Changes" button.

Congratulations! Your installation is complete. You can now surf to your favorite websites by typing an URL in your browser's location box or by selecting one of your favorite Internet bookmarks.



5

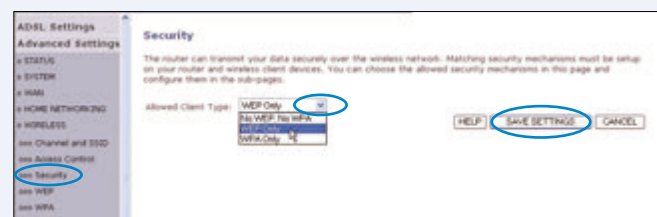
Step 5

Configure Wireless Security (recommended)

1. Enable WEP Encryption (optional)

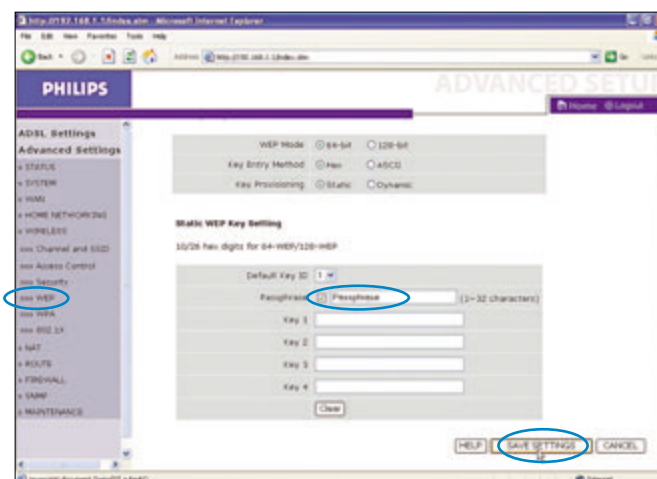
WEP is a wireless privacy protection. It will encrypt the data you are transmitting. There are 2 options, using either 64- or 128 - bit WEP Encryption (depending on the capability of your client wireless card). It is strongly recommended that you enable WEP encryption.

To enable WEP, enter <http://192.168.1.1> in the URL Address text box of your Internet browser and press the Enter key. Login and click on "Advanced Settings" in the left hand menu. Select wireless > Security. Then from the pull down menu select "WEP Only" and then click "Save Settings".



The WEP configuration page will appear:

Leave the "WEP Mode", "Entry Method", "Key Provisioning" and "Default Key ID" default values. Checkmark the box after "Passphrase" and fill in a passphrase. Now you have to click "Save Settings" on the bottom of the page. This action will automatically generate a series of 4 codes/keys.



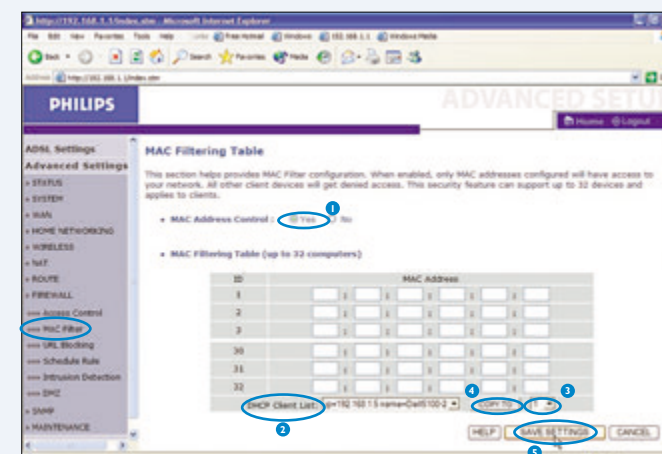
To ensure that the other devices in your network have the same WEP settings, please make sure that the WEP settings in your other devices are identical to the generated code behind "Key 1".

For further information and explanation on security, please check the manual on the CD.

2. Specify MAC Filtering (optional)

MAC Filtering allows you to specify which computers are allowed to join the wireless network based on their unique hardware (MAC) address. To enable this feature, click on Advanced Settings > Firewall > MAC Filtering. Enable MAC Filtering (MAC address control) by selecting 'Yes' (1).

Once it is enabled, only MAC addresses that have been entered in the MAC Filtering Table will be accepted onto the wireless network. All unlisted addresses will be blocked.



You can enter a MAC Address to the table by scrolling down and then selecting the computer that you want to add from the list presented under the DHCP Client List (2). Select the position where you want to copy it (3) and to click "copy to" (4). You can also, when you know the number, enter the MAC Address in the table directly. When you are finished adding MAC addresses click the 'Save settings' button (5).

Once it is saved, only the MAC addresses in the list will be accepted onto the Wireless Network. All other addresses will be blocked.

Appendix: Problem solving

If your ADSL Wireless Base Station is not able to connect you to the Internet, you may see one or more of the following messages:

DSL connection is down. Please check the following:

- Phone line is securely connected to your Wireless Basestation + ADSL Modem
- DSL Sync light on front of your Wireless Basestation + ADSL Modem is green and not blinking
- Filters have been installed on all phone jacks that have telephone devices connected to them.

If this problem persists, please contact the help desk (on the number provided by your Internet Service Provider).

Before You Start

Philips CPWBS154 ADSL Wireless Base Station



Hereby, Philips Consumer Electronics, BLC P&ACC, declares that this CPWBS154 is in compliance with the essential requirements and other relevant provisions of Directive 1999/EC.



CE 0682

Date of issue: October 2004
Specifications are subject to change without notice
Trademarks owned by Royal Philips Electronics
2004 © Royal Philips Electronics - All rights reserved

www.philips.com



PHILIPS