



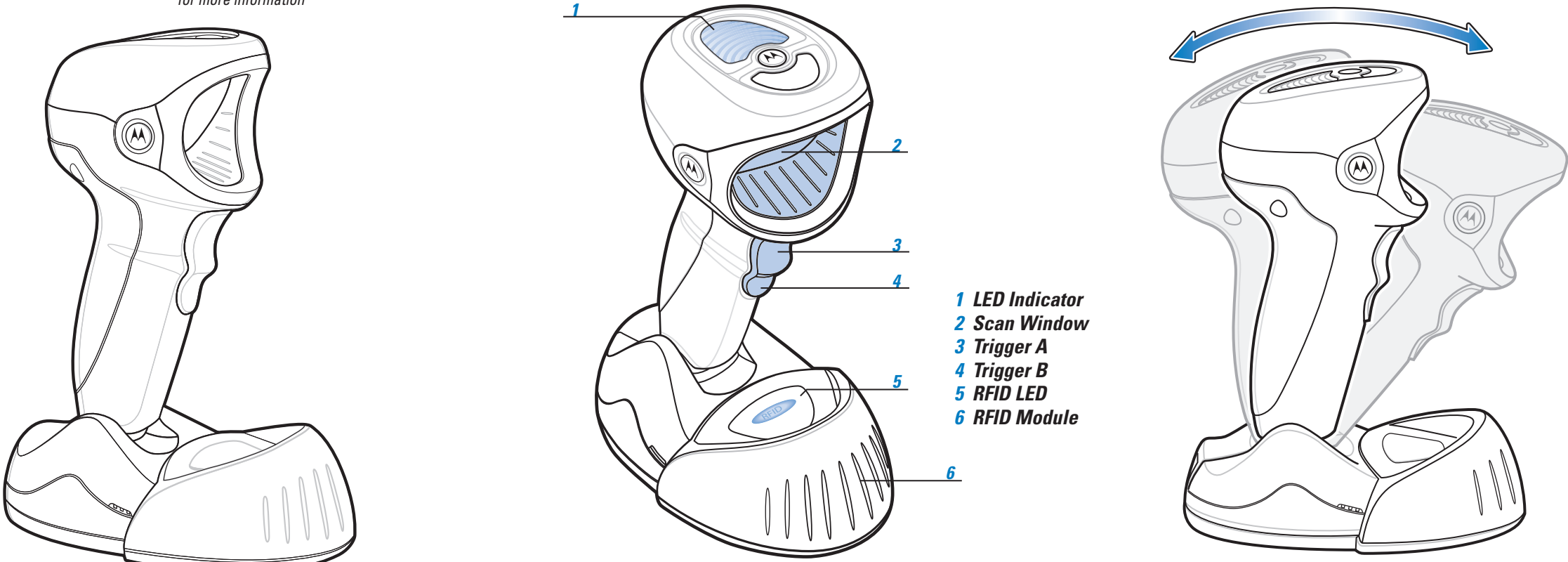
SYMBOL DS9808-R

Quick Start Guide

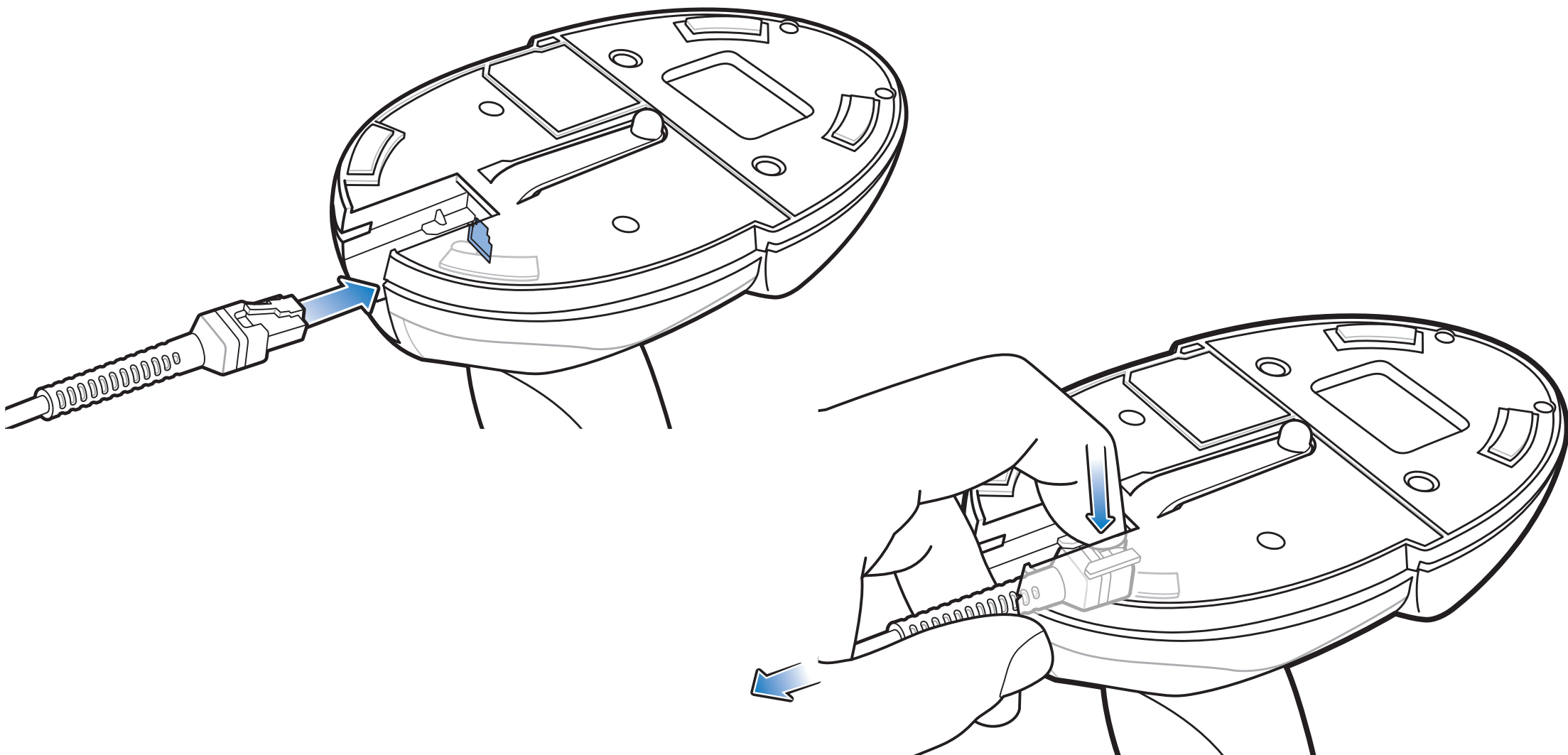
<http://www.motorola.com/ds9808>

See Product Reference Guide for more information

POST IN WORK AREA



CORD ATTACHMENT/REMOVAL



TROUBLESHOOTING

Scanner not working

No power to scanner

Check system power; ensure power supply, if required, is connected

Incorrect interface cable used

Ensure that correct interface cable is used

Interface/power cables are loose

Ensure all cable connections are secure

Scanner not decoding bar code

Scanner not programmed for bar code type

Ensure scanner is programmed to read type of bar code being scanned

Bar code unreadable

Ensure bar code is not defaced; try scanning test bar code of same bar code type

Distance between scanner and bar code incorrect

Move scanner closer to or further from bar code

Scanner decoding bar code, but data not transmitting to host

Scanner not programmed for correct host interface

Scan appropriate host parameter bar codes

Interface cable is loose

Ensure all cable connections are secure

Scanned data incorrectly displayed on host

Scanner not programmed for correct host interface

Scan appropriate host parameter bar codes

SYMBOL DS9808-R PROGRAMMING BAR CODES

Set Defaults



SET DEFAULTS

Carriage Return/Line Feed



<DATA><SUFFIX 1>

IBM 46XX Host Types



PORT 5B



PORT 9B

USB Host Types



HID KEYBOARD EMULATION



SNAPI WITH IMAGING



IBM HAND-HELD USB



SNAPI WITHOUT IMAGING

RFID Same Tag Timeout



DISABLE



PORT 17



2 SECONDS



5 MINUTES

RS-232 Host Types



STANDARD RS-232



NIXDORF RS-232 MODE B



ICL RS-232



FUJITSU RS-232



NIXDORF RS-232 MODE A



OPOS/JPOS

RFID Trigger Modes



CONTINUOUS



SINGLE TAG



CONTINUOUS RE-REPORT



CONTINUOUS FLUSH

RFID Data Transmission Format



RAW



GS1-128



EPC URI

