



CS-2900DP-FM Infinity™

DP SERIES II (DATA PORT)

2-Way FM Paging Alarm & Remote Engine Starting System

OPERATION INSTRUCTIONS

INTRODUCTION

CONGRATULATIONS on your choice of the Infinity™ with 2-Way Data Port (DP) technology by Crimestopper Security Products Inc. This booklet contains the information necessary for operating your system. If any questions arise, contact your installation dealer or Crimestopper Security Products Inc.

***IMPORTANT INFORMATION: Primary and Optional Features**

-PRIMARY: These are features that must be connected in order for the system to operate properly i.e. Power, Ground, LED, etc.

-OPTIONAL: Optional features are connected only if desired or agreed upon by the installing dealer i.e. Horn Honk, Dome light illumination, Door Locks, Trunk Pop, etc. These features may require additional parts and labor charges. Consult with your installer about these features **BEFORE** installation!

CONTACT INFORMATION:

TECHNICAL SUPPORT (800)-998-6880

Monday - Friday 8:00am - 4:30pm Pacific

Website: www.crimestopper.com

E-mail: techsupport07@crimestopper.com

CRIMESTOPPER SECURITY PRODUCTS INC.

1770 S. TAPO STREET

SIMI VALLEY, CA. 93063 REV. 12.28.2006

This device complies with FCC Rules part 15. Operation is subject to the following two conditions: 1) This device may not cause interference, and (2) this device must accept any interference that may be received, including interference that may cause undesired operation. The manufacturer is not responsible for any radio or TV interference caused by unauthorized modification to this equipment. Such modification could void the user's authority to operate the equipment.

TABLE OF CONTENTS

Operation Cautions & Warnings.....	2
Transceiver / Pager - Infinity Remote.....	3
CS-519TW Sidekick Remote Control.....	4
Operating Instructions - Alarm.....	5-7
Anti-Carjack Protection.....	8
Remote Start Vehicle...I.....	9-10
Idle Down and Infinity Run Mode.....	11
Timed Self Start Mode.....	12
Optional Turbo Timer Mode.....	13
Transceiver / Remote Control Programming.....	14
Alarm and Remote Start Diagnostics.....	15

OPERATION CAUTIONS & WARNINGS

CRIMESTOPPER SECURITY PRODUCTS, INC. and its **VENDORS** shall not be liable for any accident resulting from the use of this equipment. This system is designed to be professionally installed into a car or vehicle in good running order. Items, such as parking brake, door switches, and all engine safety features, must be in perfect working condition.

DAMAGE resulting from misuse or negligence is **NOT** covered under warranty and will be subject to repair and / or replacement charges.

IT IS ABSOLUTELY THE OWNER'S SOLE RESPONSIBILITY TO: A) Understand the operation of this system and its safety features. B) Check for proper operation of these safety features prior to accepting delivery of the vehicle from the installation facility. C) Check and maintain the condition of the vehicle and all items relative to the proper operation of this system and its safety features.

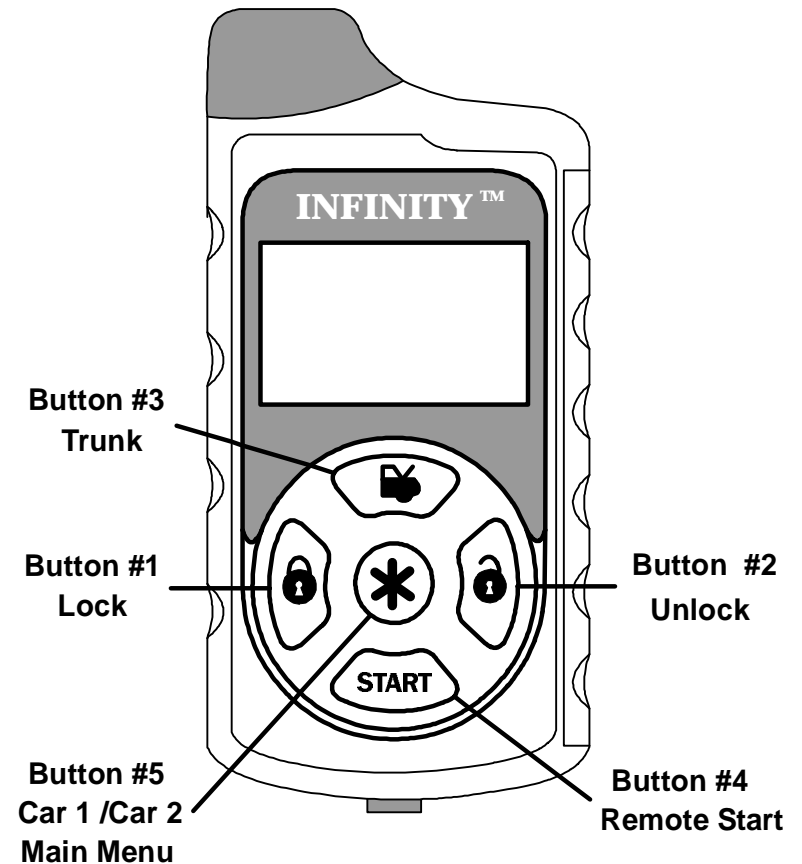
TRANSCEIVER / PAGER- INFINITY REMOTE

PAGER / REMOTE TRANSCEIVER:

The hand-held remote transceiver uses FM signals to send and receive information from the vehicle. Your range will vary depending on location, terrain, and local RF noise/interference. This system is not guaranteed to page you if you are behind concrete walls, underground, in a large structure, or in an area with high levels of electronic interference. Handle the pager/remote with care if the LCD display and/or the electronics may be damaged if subjected to abuse. The AAA Cell 1.5V alkaline battery can easily be replaced by opening the battery access door on the back of the remote. Battery life will vary depending on usage. For detailed operation of Infinity remote, see 2-Way remote operations manual.

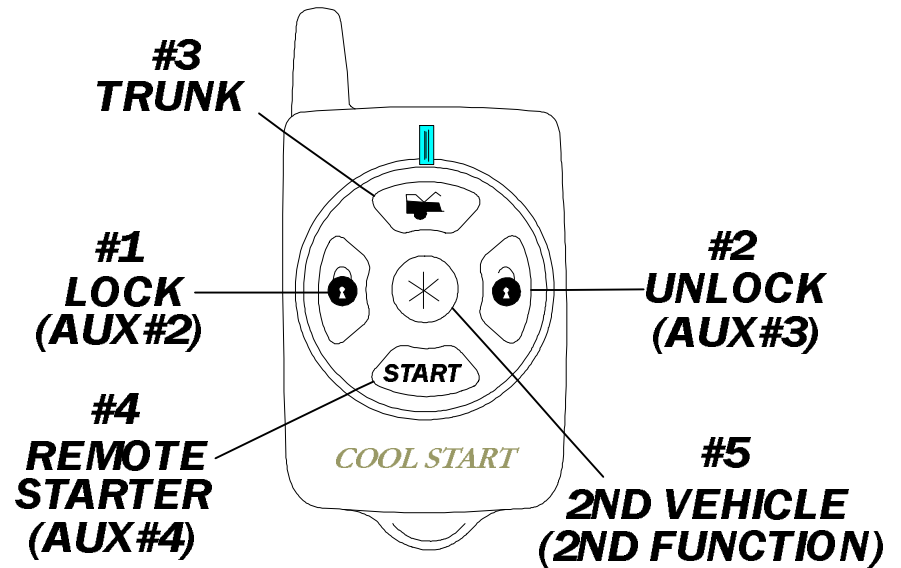
BASIC TRANSMITTER OPERATIONS:

- Button 1** **ARM / PANIC:** (press and hold for 3 sec. for Panic)
- Button 2** **DISARM:** (Unlock driver door) / Press again within 4 to 15 sec. to unlock passenger doors
- Button 3** **1st AUX. OUTPUT:** Press 1 sec. (Trunk-Pop)
- Button 4** **REMOTE START:** Press 2 sec.(press again to turn off the engine)
- Button 1+2** **WHEN ARMED:** Press 3 sec. to By-Pass All Sensors (Shock & Warn-A-Way)
- Button 1+2** **WHEN DISARMED:** Valet Mode, Press 3 sec. / Valet Park Mode, Press again for 3 sec.
- Button 1+3** **REMOTE CAR-JACK MODE:** Press 3 sec.
- Button 2+4** **SILENT ARM / DISARM**
- Button 2+3** **2nd AUX. OUTPUT:** Press 3 sec
- Button 1+4** **3rd AUX. OUTPUT:** Programmable for Momentary, Timed or Latched. (see option table)
- Button 3+4** **4rd AUX. OUTPUT:** Programmable for Momentary, Timed or Latched. (see option table)
- Button 5** **A) 1st CAR / 2nd CAR (FLIP FLOP)**
- Button 5** **B) Main Menu**



CS-519TW SIDEKICK REMOTE

519TW 1-Way sidekick remote adds flexibility to your CS-2900DP-FM. You can have the convenience of operating your system without needing to carry the larger pager remote. The Sidekick remote has less range and offers all of the same operation features except for page-back confirmation. See diagram below for Sidekick 1-Way remote operation.



QUICK CHART

Button	Button Functions	Button Options	Buttons	Button Functions	Button options
	Lock Doors & Arm System	Press and Hold for 3 seconds Activate "Panic" feature	then	Activates Aux #3	Press Button #5 then Button #2
	Unlock Doors & Disarm System	Press twice for second door unlock	then	Activates Aux #4	Press Button #5 then Button #4
	Trunk Release (Aux # 1)	Press and Release for Aux #1		Activates Car Jack (See page 14)	Press Button #1 and #3 at the same time.
then	Activates Aux #2	Press * . Then press & hold #1 for 3 Sec.		Silent Arm/Disarm	Press Button #2 and #4 at the same time.
	Start or Stop engine	Press and Hold for 3 seconds			
	2-car operation (Center Button) (Change from Car 1 to Car 2) or Car 2 to Car 1. 2 nd Function Button	Press and Hold for 2 seconds While in Car 2 mode you have 5 seconds to press a function or remote will return to Car 1.			

OPERATING INSTRUCTIONS - ALARM

ACTIVE ARMING / LOCKING

Press button #1 (Lock symbol) on the remote control. The system will arm, emit one siren chirp, one light flash, and the alarm status LED will begin to flash. Power locks will lock (if equipped) and the starter disable circuit will turn on. LCD Pager will beep once while displaying a Down Arrow and Arm Lock symbol. After a short delay (to allow the vehicle and electronics to settle) the system will be completely armed.

DISARMING / UNLOCKING

Press button #2 (unlock symbol) on the remote control. The system will disarm and confirm with two siren chirps, two light flashes, and the alarm status LED will turn off. Power locks will unlock and Interior Dome light will turn on (if installed with these optional features). LCD Pager will beep twice while displaying an Up Arrow and a Disarm Unlock symbol.

SELECTIVE SILENT ARMING / DISARMING

To Arm or Disarm the system without siren chirps, press and release both Buttons #2 (Unlock) and #4 (Start) at the same time. System will Arm or Disarm without siren chirps. Flashing lights and LED will be the only indicators of Arm/Disarm status. The LCD will Display an “X” when the system is armed or disarmed without a chirp.

ALARM TRIGGERS

If there is an intrusion into the vehicle, a hard impact to the body or the ignition is turned on the alarm will sound and flash the lights for 1 minute. After 1 minute, the trigger cycle will automatically stop and alarm will remain armed to continue protecting the vehicle. If a door is left open after an intrusion then the unit will cycle a maximum of 2 minutes and continue to protect the other un-tampered or unopened zones.

LCD REMOTE PAGING / ZONE VIOLATIONS

When the system is triggered, the alarm sends a paging signal to the remote. If you are within range, you will receive a violation paging signal which consists of a vibration followed by audible beeps to notify you the vehicle has been tampered with. The Infinity remote stores the last 3 triggers in memory (see 2-Way manual).

DISARMING WHILE TRIGGERED

Disarming the System while it is triggering requires TWO presses of the #2 Unlock Button. The first press of Button #2 Resets the alarm cycle only (system still armed) while a second press will disarm/unlock the system.

OPERATING INSTRUCTIONS - ALARM

PRIOR INTRUSION ALERT

This system will notify you if the alarm was tripped while you were away. Upon disarming, the two normal disarm chirps will be heard then the system will emit 4 additional siren chirps. Check your vehicle for any signs of a break in or tampering. Also see LED Diagnostics Section to determine the cause of the trigger.

REMOTE PANIC PROTECTION

To sound the alarm in an emergency situation or to draw attention to your vehicle, press and hold Button #1 (Lock) for at least 3 seconds until the siren sounds. Press Button #2 (Unlock) to reset panic mode. The LCD pager/remote will display a Panic, SOS symbol and emit 8 beeps when the panic mode is triggered.

SELECTIVE SHOCK SENSOR DISABLE

To arm the alarm and bypass shock sensor protection, press Button #1 as normal then press and release Button #1 and #2 together within 2 seconds. You will hear 3 extra siren chirps indicating shock sensor bypass for this arming cycle only. This feature can be used when parking near railroad tracks, airports, or area with excessive loud machinery or noise to prevent the nuisance of unnecessary false alarms.

OPEN DOOR ALERT / BYPASS

Upon arming, this system will warn you if a door is left open. The LCD pager will vibrate and beep along with displaying the open zone on your LCD screen. This zone will automatically be bypassed until the open door is closed, otherwise the alarm will continue to protect all other zones.

PRE-WARNING SHOCK PROTECTION

The Pre-warning (warn-away) feature will activate when a low-level shock or vibration detected by the system's shock sensor. The alarm will chirp the siren 5 times and flash the lights once to help deter any further tampering with the vehicle. The pager/remote will vibrate once and beep (6X's).

PASSIVE ARMING MODE (Programmable)

Passive (automatic) arming occurs 30 seconds after the ignition is turned off and the last door is closed. Upon closing the last door, the unit will flash the lights twice and the alarm status LED will be flashing rapidly to confirm passive countdown. If a door is reopened within the 30 second period, the countdown will stop and restart when the door is closed. Passive arming provides failsafe protection in case you forget to arm the system.

OPERATING INSTRUCTIONS - ALARM

PASSIVE LOCKING (Programmable)

The alarm system can be programmed to lock the doors when the system passively arms. The default setting is OFF because passive locking increases the risk of locking the keys in the vehicle. When the system arms/locks passively, without you pressing the remote, the LCD pager will still provide a confirmation signal. The LCD screen will have an Arrow Down and Arm Lock symbol.

EMERGENCY OVERRIDE (Disarm without using the remote control)

If you have lost the transmitter or it stops working for any reason and the Alarm is armed, you will have to disarm the system manually. Open the door with the key [alarm will sound], turn the ignition on, and press the Valet button for about 5 seconds. The Alarm will disarm and allow you to use the vehicle until you can repair/replace the remote. Valet mode also prevents Passive Arming.

VALET MODE (Solid Blue Status LED on dashboard)

Valet Mode disables the Alarm and Remote Engine Starter for vehicle servicing. **To Activate Valet Mode:** Disarm alarm system, turn the ignition on and press the Valet button [about 5-7 seconds] until you hear (3) siren chirps. The alarm status LED turns on solid. Repeat the process to exit VALET mode. **To enter / exit Valet Mode Via the Remote:** Press and hold both buttons #1 (Lock) and Button #2 (unlock) together for about 3 seconds until 3 chirps are heard. Repeat this step to exit via the remote transmitter. Lock / Unlock and AUX features will still operate in when in VALET mode however remote start and alarm functions are disabled.

VALET PARK MODE (Using the remote transmitter only)

Note: Valet Park Mode is only accessible when using the remote transmitter. Valet park mode allows you to turn over the vehicle to a valet allowing access to drive/lock/unlock your vehicle, but alarm will trigger if the trunk is opened. **To Activate Valet Park:** With system disarmed, press and hold both buttons #1 (Lock) and Button #2 (unlock) together for about 3 seconds, 2 times. 3 chirps will be heard first when unit goes into regular Valet. Release and press both buttons again until you will hear 2 more chirps. Alarm status LED will always flash slowly when in Valet Park even when the Ignition is turned on (or driving vehicle). Repeat step above to exit Valet Park mode.

TRUNK / HATCH POP (Optional, Remote AUX Output 1)

This feature is designed to interface with existing Factory power trunk or power hatch release systems and may require additional parts and/or labor charges. Press and release Button #3 (Trunk) on the transmitter to pop/open the trunk/hatch. If the system is armed, it will also disarm when the button #3 is pressed. The LCD pager/remote will confirm with 3 beeps and the trunk icon on the screen.

ANTI CARJACK PROTECTION

REMOTE OPERATED CARJACK PROTECTION

This feature provides Active Carjack protection through the remote control. When the Ignition is on (vehicle is running), press and hold the #1 LOCK Button and #3 TRUNK Button for 2 seconds. The parking lights will flash 2 times and the LED will begin to flash rapidly to confirm the beginning of a Carjack countdown. 30 Seconds later, the unit will begin a Carjack Cycle consisting of 20 seconds of pre-warning chirps turning into a full system activation with siren / flashing light pulses for up to 5 min. If the Ignition is turned off during a Carjack trigger the siren and lights stop but Carjack protection is still active. The Siren and Lights will resume if the Carjacker tries to turn the Ignition back ON. TO RESET: Press Button #2 (UNLOCK) on the remote and the siren will chirp once, or turn the key on and press and hold the override button for at least 5 seconds.

SWITCH-CONTROLLED & FULL TIME CARJACK (pink wire configuration)

This feature can provide Passive or Manual control Carjack protection depending on the configuration of the Pink Carjack wire of the alarm system. The system must be programmed for the Pink wire to be used as a Carjack trigger with programming option #20. Once programmed for the Pink wire for use as a Carjack trigger, it can be configured in different ways to provide different levels of protection. It can be connected to a hidden +12V toggle/momentary switch or to +12V Ignition Power. Read following sections for further descriptions.

HIDDEN SWITCH-CONTROLLED CARJACK:

This configuration will enable the vehicle owner to activate a Carjack countdown by pressing a hidden push-button (not included with kit) during a Carjack situation. A Carjack countdown will begin under the following conditions: Ignition is ON (vehicle is running), the push-button is pressed, and the door opens/closes. Upon these 3 events, in that order, the alarm will start a Carjack countdown. After a delay of one minute, the system will begin chirping for 20 seconds then trigger into a full cycle for up to 5 minutes. To reset this Carjack mode, Ignition must be ON then press and hold the override/valet button for 5 seconds (until LED goes out.)

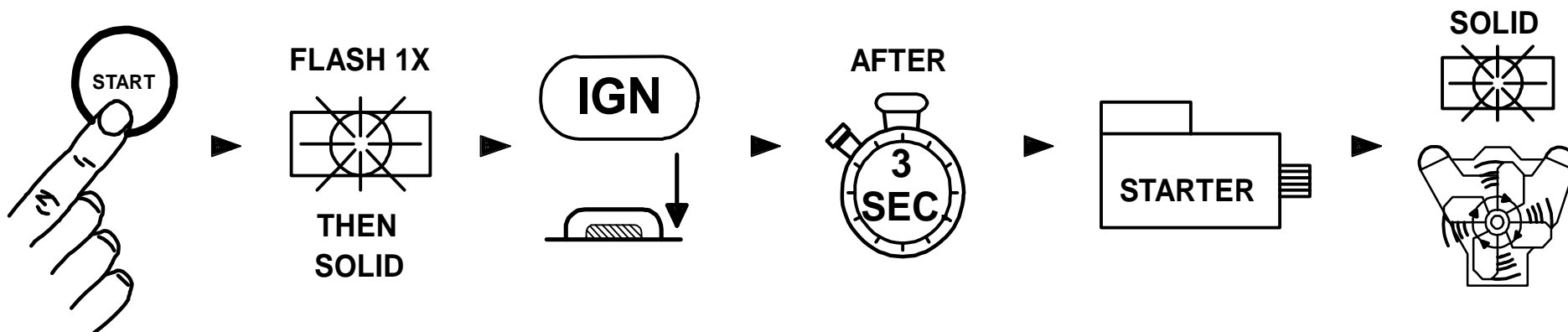
FULL-TIME [Permanent] CARJACK:

We recommend that this configuration only be used if a serious threat of Carjack exists during everyday situations. When the Ignition is on (vehicle is running), anytime a door is opened the Carjack countdown sequence will be initiated. There will be 2 light flashes and the LED will change from solid to quick pulsing as confirmation of a countdown sequence. To reset FULL TIME Carjack, the Ignition has to be ON, then press and hold the override/program button 5 seconds until LED stops pulsing. The LED will be on SOLID when in this mode anytime the Ignition is ON (or while driving) as a reminder that Carjack is waiting for a door to open.

REMOTE STARTING VEHICLE

REMOTE ENGINE STARTING - SUCCESSFUL START

- 1) Press remote start button on the remote transmitter. System will chirp 3 times for audible confirmation. (Chirps can be programmed on or off-See installation manual.)
- 2) Parking lights flash once, then turn on solid, Ignition/Accessory circuits turn on.
- 3) After a few seconds, Starter Motor engages, Parking lights and Accessory circuits turn off while cranking.
- 4) Engine Starts and Runs. Parking Lights and Accessory turn back on, Doors Lock.
- 5) Engine will remain running for programmed run time until reset with Brake pedal. If needed, the engine can be turned off with remote transmitter.



DOUBLE BUTTON PRESS FOR REMOTE START and TRUNK RELEASE

This option will allow you to change whether the Remote starter and Trunk release activate by a single press or a double button press. Check with your installer or follow programming option instructions in the installation manual.

REMOTE ENGINE STARTING – LCD PAGER-REMOTE

When requesting a remote start the LCD pager remote will confirm with an Ignition Icon along with 3 beeps. Once the vehicle has successfully started the remote will confirm back with 2 vibrations, a moving vehicle icon, and 6 beeps.

REMOTE STARTING VEHICLE Cont.

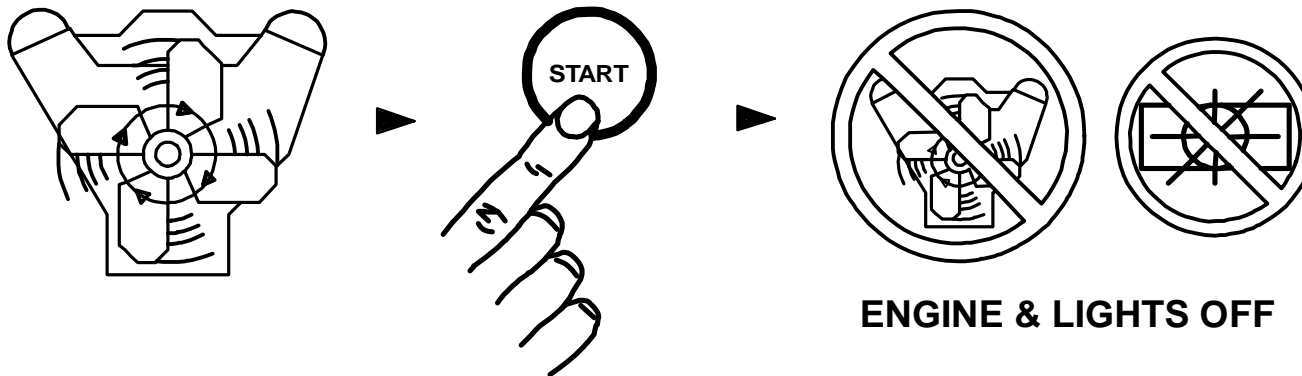
UNSUCCESSFUL REMOTE START

In the event that the engine does not start on the first attempt, the system shuts down for a few seconds, then attempts to restart the engine a 2nd and 3rd time. For hard starting engines, the unit will allow a starter crank time of up to 13 seconds maximum. This should provide ample cranking time for difficult starts, but is limited to 13 seconds to help prevent damage to the starter from over cranking.

- 1) If engine starts on 2nd or 3rd attempt, see steps 4 & 5 (on last page) under "Successful Start".
- 2) If Third attempt fails to start engine, the system will turn off and doors will remain locked. *NO FURTHER ATTEMPTS WILL BE MADE AUTOMATICALLY UNLESS YOU PRESS THE REMOTE START BUTTON AGAIN.*

TURNING OFF YOUR REMOTE STARTED ENGINE (Via Remote Control)

- 1) Engine is running in Remote Start (Parking lights ON).
- 2) Press Remote Start button on remote transmitter.
- 3) Engine & parking lights turn OFF, Doors remain locked or will re-lock if applicable.



ENTERING YOUR REMOTE STARTED VEHICLE:

- 1) With engine running, Remote Unlock/Disarm system (If armed) or open door with key.
- 2) Enter vehicle and be careful not to step on brake pedal! (Remote Start Reset)
- 3) Turn Ignition to ON/RUN position, then press brake pedal to reset the Remote Starter & Shift out of park.
- 4) Remote starter will reset instantly when the brake is pressed. Parking lights will turn off and the ignition key is now controlling your vehicle.

IDLE DOWN – INFINITY RUN MODE

This mode allows the unit to take over operation of your idling, parked vehicle while the ignition key is removed and you exit the vehicle. The vehicle is put into a remote running condition before you exit and it will remain running for the programmed run time, until you return, or until the remote start button is pressed.

Example:

You pull up to a convenience store for a quick stop, "Idle Down" mode keeps engine running when you exit the vehicle, (with keys in hand) remote lock/arm alarm. When you return, unlock/disarm alarm, turn ignition ON and drive away. This mode can also be used on Turbo vehicles that need idle for cool-down.

IDLE DOWN MODE - EXITING THE VEHICLE:

- 1) With engine running, press Remote Start button on remote transmitter. Siren will chirp 3 times for confirmation.
- 2) Parking Lights will turn ON.
- 3) Doors will unlock, if brake pedal is being depressed then doors will unlock when it is released.
- 4) Turn OFF Ignition and remove key. Engine should remain running.
- 5) Exit vehicle and then remotely lock doors if desired.
- 6) Engine will remain running for programmed run time, until you return, or press the remote start button.

INFINITY RUN MODE

This mode allows the vehicle's engine to remain running *INDEFINITELY*. This mode can be beneficial to law enforcement vehicles or commercial vehicles that need to remain running unattended for long periods of time.

- 1) Follow steps for "IDLE DOWN MODE - EXITING THE VEHICLE" (above), except press the remote start button a second time within 10 seconds at STEP #1.
- 2) Parking Lights will start flashing instead of coming on solid, and doors will unlock.
- 3) Turn Ignition switch OFF, remove key and exit the vehicle. Engine should remain running.
- 4) The vehicle's parking lights will flash for the programmed run time of 12, 24, or 36, or 48 minutes and then switch to solid while motor runs indefinitely or until fuel supply runs out.

TIMED SELF START MODE

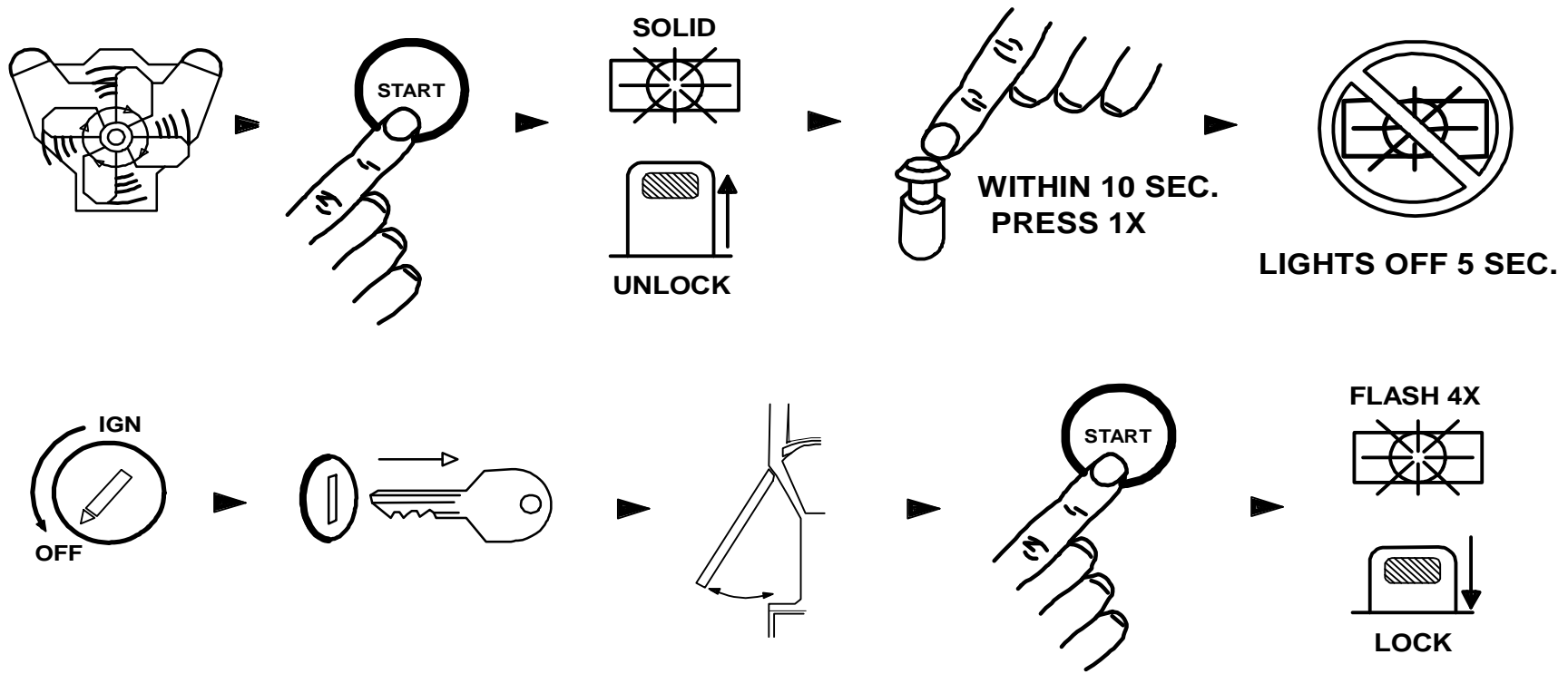
TIMED SELF START MODE

This mode allows the vehicle to be programmed to self-start every 4 hours and run for the programmed run time. This can be helpful during extremely cold conditions where engine or fluid freeze-up is a concern.

- 1) Have engine running with the Key, then press the Start button on the transmitter.
- 2) Within 10 seconds press the valet/program button once.
- 3) Parking Lights will turn OFF for about 5 seconds, and doors will unlock.
- 4) Turn Ignition switch OFF, remove key and exit the vehicle. Engine should remain running.
- 5) Press the remote start button again to turn off the engine. The parking lights will flash 4 TIMES as a confirmation that the unit is in Timed Self-Start Mode.
- 6) The Vehicle will Start by itself every 4 hours, or until driven with key or started via remote control.

RESETTING TIMED SELF START MODE

To reset the timed self-start mode, start the vehicle using the key or the manually with the remote control



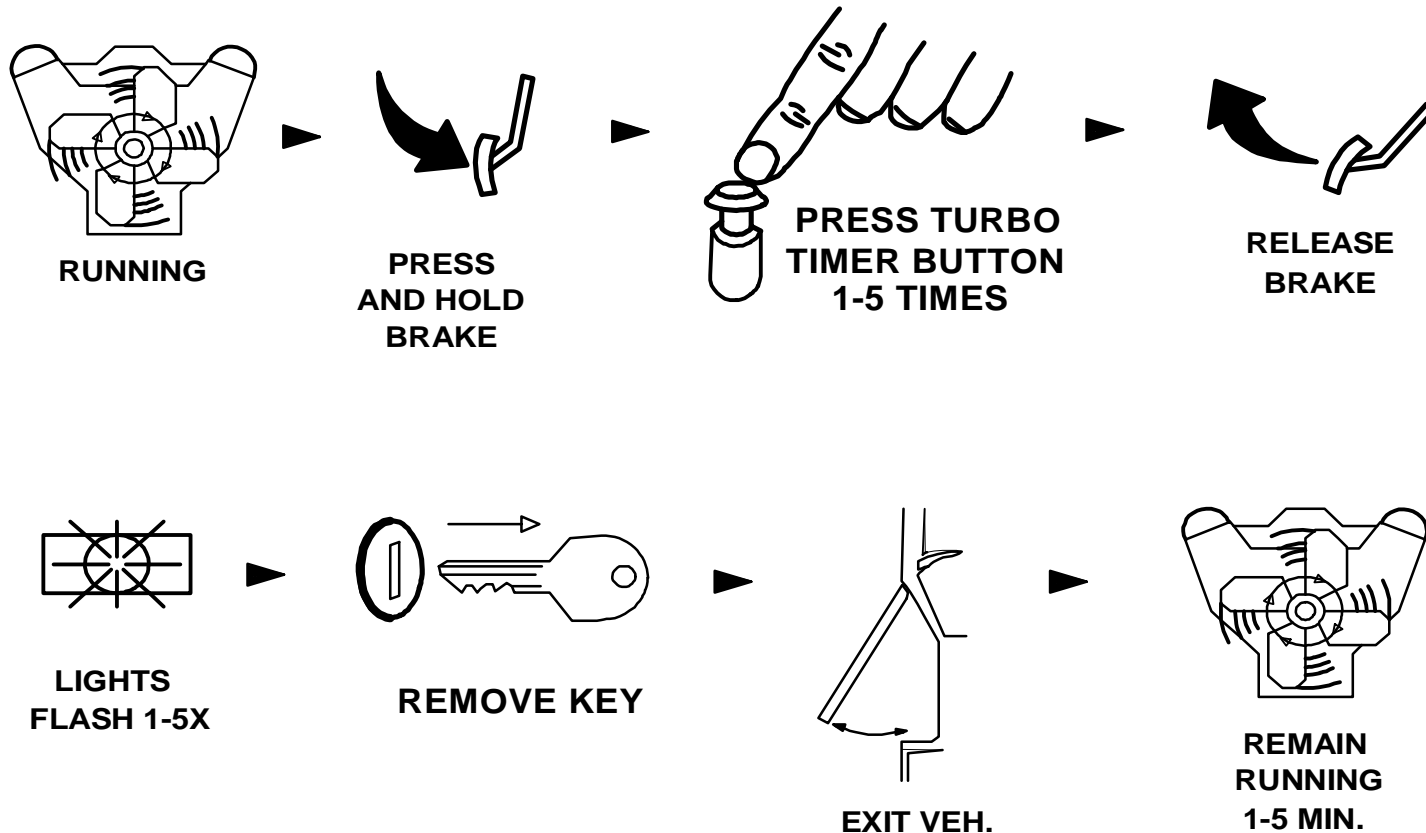
!!THE VEHICLE MUST BE OUTDOORS OR IN A WELL VENILATED AREA!!

OPTIONAL TURBO TIMER MODE

IMPORTANT NOTE: This mode requires the use of an extra part called a momentary switch or button that is not included with the kit. Check with your installer about adding this feature. The optional Turbo Timer mode allows the your system to keep your vehicle running for 1 to 5 minutes [selectively] after you remove the key, exit the vehicle, and lock the doors remotely [if you own a Turbo or Turbo Diesel]. This is handy for turbo cool down without the need for expensive Turbo Timers.

OPTIONAL TURBO TIMER MODE

- 1) Engine should be running with the key. Press and hold the brake pedal.
- 2) Press your "Turbo Timer" button 1 to 5 times for each minute of run time you desire. (1 press = 1 min.)
- 3) Release the brake pedal and your system will confirm by flashing the lights the same number of times the button was pressed.
- 4) Turn Ignition switch OFF, remove key and exit the vehicle. Remote lock your doors for safety. The engine should remain running for the selected number of minutes.

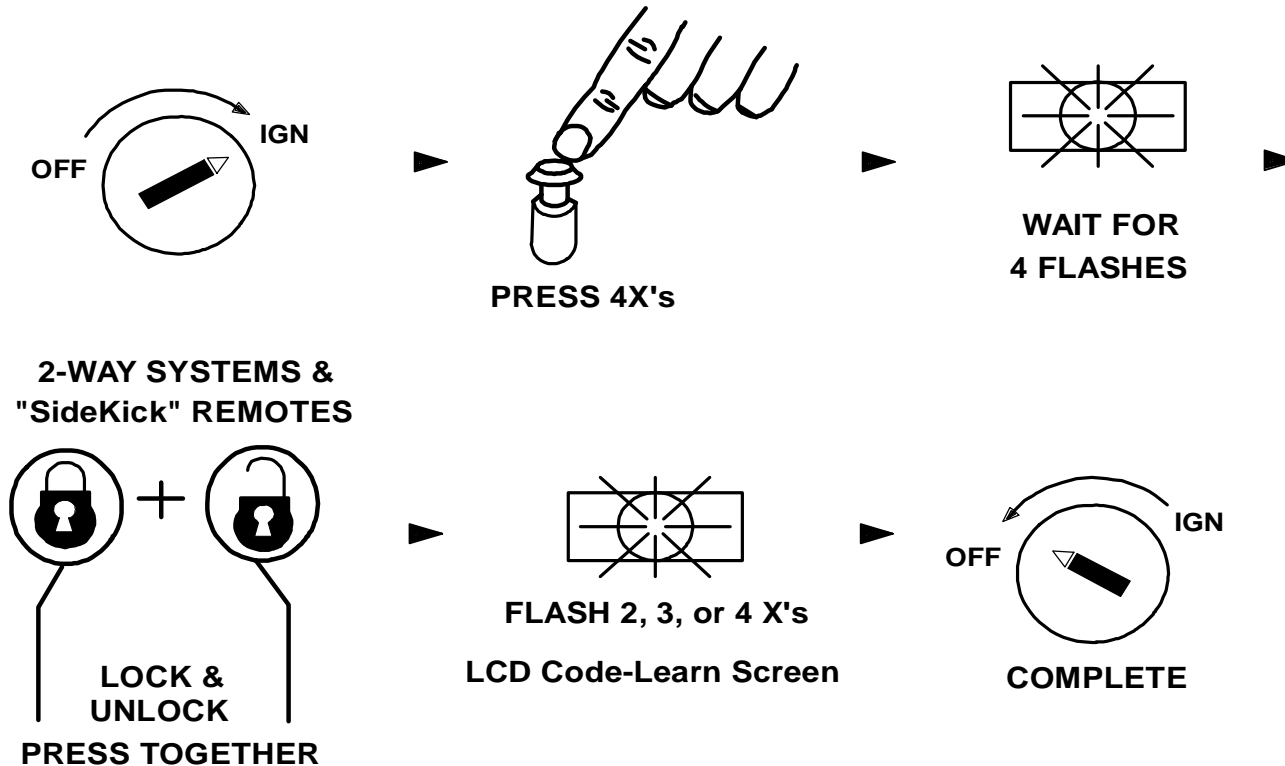


TRANSCIVER / REMOTE CONTROL PROGRAMMING

Note: All transmitter codes must be learned at time of programming!! Up to 4 different transmitter codes can be stored in the memory of the system.

1. Turn key to the ON position.
2. Press Programming button 4 times, then after a few seconds the unit will flash the parking lights 4 times.
3. Press buttons #1 (Lock) & #2 (Unlock) together at the same time of each transceiver to be learned. You should get 2 light flashes indication the unit is waiting for a 2nd code, then press button #1 & #2 of a second transmitter or transceiver, the unit will flash 3 times indicating its waiting for the 3rd code and lights will flash 4 times for 4th code. If all 4 codes are learned, the unit will automatically exit code learning mode, otherwise turn key off and close hood.

NOTE: When learning 2-Way FM remotes wait for the LCD to confirm with a beep and the antenna ICON on the LCD screen **BEFORE** learning the next remote.



ALARM LED DIAGNOSTICS

The CS-2900DP-FM system includes disarm diagnostics, through the Alarm Status LED light, that will help in determining what caused the last trigger of the alarm system. This is a valuable tool in determining how the vehicle was tampered with or if there is a false alarm problem in which case you can make the necessary adjustments to correct the problem. When the system is disarmed with the remote you will hear the normal 2 chirps, then 4 quick chirps that indicate the alarm was triggered while you were away. Check the LED light for a sequence of flashes:

Shock Sensor = 1 Flash Door = 2 Flashes Hood/Trunk = 3 Flashes Ignition = 4 Flashes

Diagnostics will reset when the Ignition is turned on or when the system is re-armed.

REMOTE START DIAGNOSTICS

If the system flashes the parking lights one to three times and doesn't attempt remote, it means the following:

1 Parking Light Flash = Problem with Brake Switch. There could be a problem with a bad brake light. Many dual filament light bulbs connect the brake and park lights together when bulb goes bad. Check all brake lights work properly.

2 Parking Light Flashes = Problem with Hood Switch. Make sure hood is closed or that the Blue hood pin wire is not shorted to Ground.

3 Parking Light Flashes = Valet Service Mode. Check the Alarm Status LED light and if it is on Solid Blue (with doors closed) then the system is in Valet Mode. To exit Valet Mode, turn the Ignition on, press and hold Valet Button for about 5 seconds until LED goes out. Unit is now out of Valet Mode and should perform a remote start.

CRIMESTOPPER

Crimestopper Security Products Inc.
1770 So. Tapo Street
Simi Valley, CA 93063
(800) 998-6880
www.crimestopper.com
email@crimestopper.com
©2006 Crimestopper Security Products

The logo for TechWeb, featuring the word "TechWeb" in a bold, rounded, sans-serif font with a thick black outline and a slight drop shadow effect.

ONLINE TECHNICAL SUPPORT
www.crimestopper.com