

**Fantasea Line**  
**FG16 Housing**  
(Cat. No. 1391)  
**For Canon PowerShot G16**  
**Instruction Manual**



# TABLE OF CONTENTS

<b>TABLE OF CONTENTS</b>	<b>2</b>
<b>DISCLAIMER</b>	<b>3</b>
<b>INTRODUCTION</b>	<b>3</b>
GENERAL INFORMATION	3
FEATURES & SPECIFICATIONS	4
<b>INCLUDED IN PACKAGE</b>	<b>5</b>
<b>IDENTIFICATION OF HOUSING PARTS</b>	<b>6</b>
<b>THE CANON POWERSHOT G16 DIGITAL CAMERA</b>	<b>11</b>
<b>SETTING UP THE HOUSING</b>	<b>12</b>
PREPARING THE CAMERA	12
PREPARING THE HOUSING	12
OPENING THE HOUSING	14
CHECKING THE O-RING	15
INSTALLING THE CAMERA	15
CLOSING THE HOUSING	16
REMOVING THE CAMERA FROM THE HOUSING	17
USING THE CAMERA BUILT-IN FLASH	18
<b>OPTIONAL ACCESSORIES</b>	<b>19</b>
EXTERNAL FLASHES	19
FLASH & VIDEO LIGHTING SETS	21
LENS ACCESSORIES	21
HOUSING HAND GRIP STRAP	22
COLD-SHOE CONNECTOR FOR LIGHTING ACCESSORIES	23
MOISTURE DETECTOR	23
FG16 HOUSING ACCESSORY SYSTEM	24
<b>CARE &amp; MAINTENANCE</b>	<b>25</b>
<b>FANTASEA PRODUCT CONSUMER LIMITED WARRANTY</b>	<b>26</b>
<b>FANTASEA MOISTURE DETECTOR</b>	<b>27</b>
IDENTIFICATION OF PARTS	27
SILENCING THE ALARM	28
REPLACING BATTERIES	28
REPLACING THE ALARM UNIT	29

## DISCLAIMER

While every effort has been made in order to ensure that the information included in this instruction manual is accurate and complete, no liability will be accepted for any errors or omissions. Fantasea Line reserves the right to change product specifications and features described herein at any time without prior notice. No part of this instruction manual may be copied, translated or reproduced without the prior written permission of Fantasea Line. Fantasea Line makes no warranties aside from limited product warranty as described at the end of this manual.

## INTRODUCTION

### Note

Please read this manual carefully in order to properly operate the **FG16 Housing**. Store this manual in a safe place for further reference once you have read it.

### General Information

The **FG16 Housing** features a stylish and ergonomic design, specifically created for the Canon PowerShot G16 digital camera. The **FG16 Housing** is manufactured to the highest professional standards of function, style and durability. It is depth rated to 60m/200 feet and is fully functional with ergonomically designed and labeled controls. The Fantasea **FG16** is the ultimate waterproof home for the Canon PowerShot G16. The **FG16 Housing** is ideal for outdoor and underwater photography. Underwater photographers can dive or snorkel and capture all the excitement of this fascinating world, while outdoor photographers also have the option of capturing the action of outdoor and water sports activities, such as paddle sports, sailing, boating, surfing, fishing, hunting, backpacking and camping. The **FG16 Housing** is shock resistant and protects the camera from water, sand, dust, frost, impact, as well as other damaging elements and harmful occurrences. The **FG16 Housing** was designed to be compatible with a complete accessory system, enabling photographers to enhance the quality of their images.

## Features & Specifications

- Depth rated to 60m/200 feet
- Made from durable injection molded Polycarbonate
- Access to all camera controls and functions
- Shock resistant
- Double O-ring main seal
- Special cold-shoe mount for lighting accessories
- Removable double fiber optic cable connection plate
- Removable flash diffuser
- Removable anti-glare hood for the LCD screen
- Easy and secure installation of camera
- Labeled controls for comfortable operation
- Compatible with a wide range of underwater photo accessories
- Moisture detector
- Weight (with camera on land): 1.1 kg
- Weight (with camera in 3.6% salt water): -0.3 kg
- Dimensions (without accessories): 17 x 13 x 13.5 cm \ 6.7 x 5.11 x 5.4 inch (W x D x H)

## INCLUDED IN PACKAGE



- |  |   |
|--|---|
| 1. FG16 Housing                              | 6. Screwdriver  |
| 2. Removable flash diffuser with secure line | 7. Silica gel packs                                     |
| 3. Hand lanyard                              | 8. O-ring remover                                       |
| 4. Silicone grease                           | 9. Spare back door O-ring seal                          |
| 5. Anti-glare hood for LCD screen            | 10. Diffuser quick release secure string (housing side) |

## IDENTIFICATION OF HOUSING PARTS

### Note

1. Please refer to the Canon PowerShot G16 camera instruction manual for detailed descriptions and instructions regarding all camera controls and functions.
2. It is strongly recommended that you familiarize yourself with all the controls topside before using these controls underwater.

**Top/Front Side of Housing** - Corresponding numbered descriptions are found on the following page



Numbered descriptions below refer to corresponding numbers on the top/front housing graphic on the previous page:

1. **Front Dial** - Turning this dial swivels the front dial of the camera to the opposite direction. This allows for altering shutter speed and aperture, navigating through camera menus and more. Note that housing front dial directions are opposite to camera front dial directions when turned.
2. **Zoom Control** – Turning this control activates the camera zoom button:
  - a. Turn the zoom control counterclockwise to zoom out, increasing the area visible in the frame.
  - b. Turn the zoom control clockwise to zoom in, so that the subject fills a larger area of the frame.
3. **Shutter Release** – Activates the camera shutter release button and auto focus prior to taking the picture.
4. **On/Off**- Pushing this control activates the camera power switch button and turns the camera on/off.
5. **Exposure Compensation** - Turning this dial operates the camera exposure compensation dial to the opposite direction. Note that housing exposure compensation dial directions are opposite to camera exposure compensation dial directions when turned.
  - a. In order to set a higher exposure compensation value, turn the exposure compensation dial counterclockwise.
  - b. In order to a lower exposure compensation value, turn the exposure compensation dial clockwise.

Note that value markings on the housing exposure compensation dial do not indicate the value set by the corresponding camera dial, even if aligned prior to camera installation inside the housing. Therefore, it is important to check the exposure compensation value selected and displayed on the camera LCD screen.

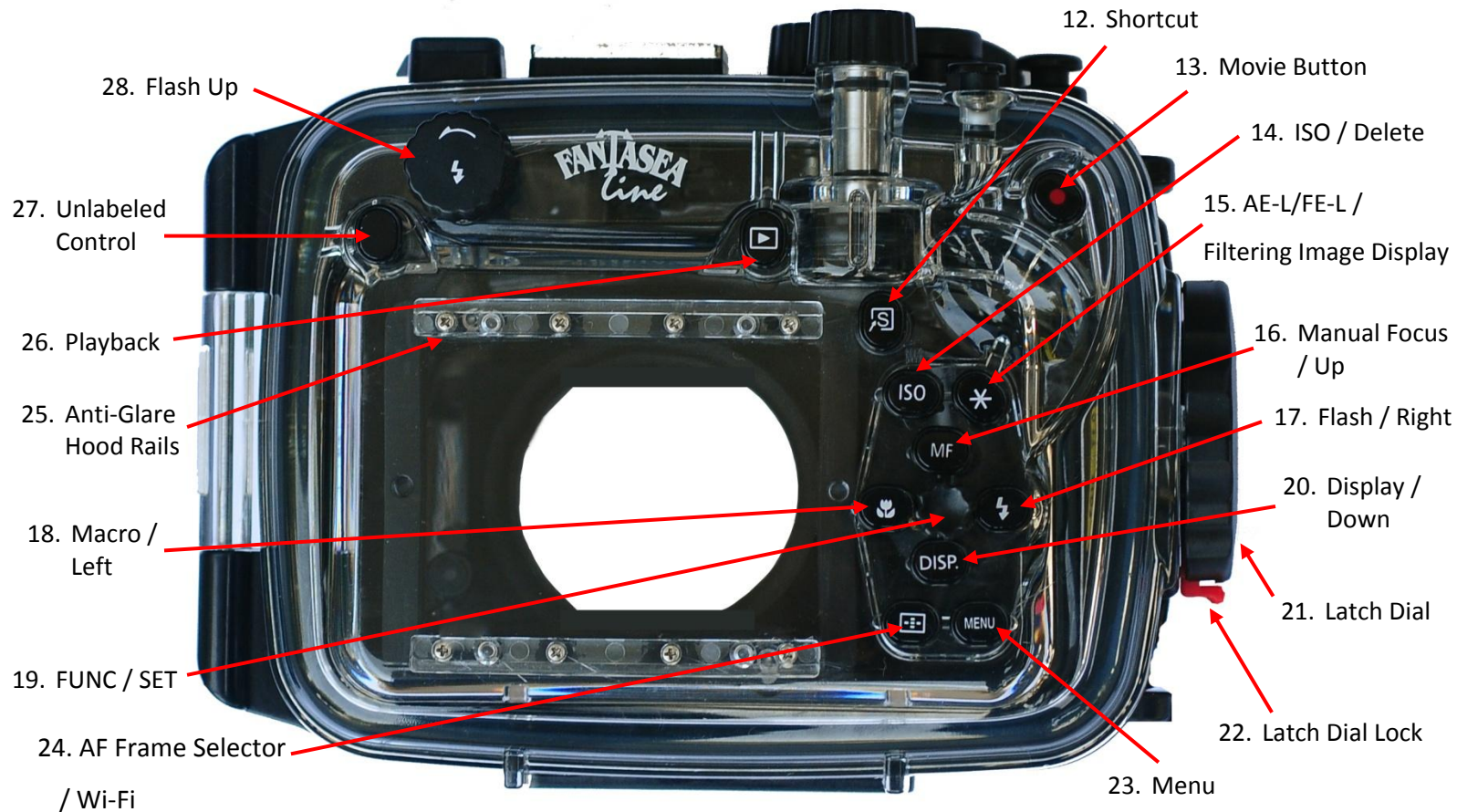
6. **Mode Dial** – Turn this dial while applying slight downward pressure to change shooting modes.
  - a. In order to for the housing mode dial to indicate the proper mode selected by the camera mode dial, it is recommended to align housing and camera mode dials prior to installing the camera inside the housing. Please refer to the section “Installing the Camera” for further information.
  - b. When housing and camera mode dials are aligned, the mode displayed on the left side of the housing mode dial is the one selected.

- c. Note: Housing and camera mode dials may not remain aligned during your dive. Therefore, it is important to check the shooting mode selected and displayed on the camera LCD screen when switching modes. Even in such cases, since mode labels on the housing mode dial appear according to their order on the camera mode dial, they can still assist with the amount of turning required in order to reach the desirable shooting mode.
  - d. In order to switch modes, apply slight downward pressure on the mode dial as you rotate it in order to create enough contact pressure to accurately reach the desired mode.
7. **Cold-Shoe Mount for Lighting Accessories-** Enables mounting a flash, video light, torch or focus light on top of the housing by using a dedicated connector. For further information regarding such connectors, please visit the Fantasea website – [www.fantasea.com](http://www.fantasea.com)
8. **Flash Push Down Control** – This control allows blocking the camera built-in flash after it has been popped-up by using the Flash Up switch.
- a. In order to prevent the camera built-in flash from firing, apply slight downward pressure on the Flash Push Down control and slide it rightwards until it sits securely in the small slot toward the right side, as indicated by the arrow direction on top of the control. This pushes down the camera built-in flash enough in order to prevent it from firing.
  - b. In order to release the camera built-in flash again, slide the Flash Push Down control leftwards until it returns to its original position on the left. This will enable the flash to pop-up again and to fire whenever activated.
9. **Fiber Optic Cable Plate-**
- a. When installed on the housing, the fiber optic cable plate and the two adaptors inserted inside it allow for an easy attachment of 2 fiber optic cables to the housing. For further instructions, please refer to the section “External Flashes”.
  - b. Remove the fiber optic cable plate from the housing in order to make use of the internal camera flash during your dive. In order to remove the plate, insert your fingers beneath the adaptors installed inside the plate and pull the plate upwards till it is removed from its slot. Note that when photographing using the camera built-in flash only, the flash diffuser accessory should be installed, or else unwanted shading will occur in most images taken.
  - c. Make sure the fiber optic cable plate is secured to the housing by its secure line in order to avoid losing it during the dive.
  - d. If using only one external flash, make sure the second fiber optic cable adaptor remains in its place to block any light coming out of the exposed adaptor hole.

10. **Lens Port-** The housing lens port is compatible with a wide variety of accessory filters and lenses. For a selection of lens accessories available, please visit the Fantasea website – [www.fantasea.com](http://www.fantasea.com)

11. **Tripod Mounting Screw Holes** – Enable mounting the housing on a tray, thereby allowing for the addition of various image enhancement accessories to your underwater photo system. By choosing any one of 3 adjustment positions, you can better determine how and where to position the housing on the tray.

**Back Side of Housing** - Corresponding numbered descriptions are found below the graphic\*



\* Image doesn't feature the optional anti-glare hood, which can be installed over the LCD screen

Numbered descriptions below refer to corresponding numbers on the back side housing graphic above:

12. **Shortcut** – Pushing this control activates the camera shortcut button. Note that the function of this button can be assigned through camera menus.

**13. Movie Button –**

- a. Press the Movie Button in any shooting mode to start recording a video. The record symbol (●) appears and displayed with the elapsed time.
- b. Press the Movie Button again in order to stop recording.

**14. ISO / Delete –**

- a. In shooting mode, press this control to activate the camera ISO button.
- b. In playback mode, press this button to delete images.

**15. AE-L / FE-L / Filtering Image Display –**

- a. In shooting mode, press this button to lock exposure or focus prior to shooting an image.
- b. In playback mode, press this button to choose a condition for image display or navigation.

***Multi-Selector buttons (16-20)***

**16. Manual Focus / Up** – Pushing this control activates the camera focus mode / Up button.

**17. Flash / Right** – Pushing this control activates the camera flash mode / right button.

**18. Macro / Left** – Pushing this control activates the camera macro mode / left button.

**19. FUNC / SET –**

- a. Pushing this control activates the camera FUNC / SET (confirm selection) button.
- b. Rotating this control operates the camera rotary wheel, thereby enabling to alter exposure values, navigate through menus and other functions assigned to the rotary wheel.

**20. Display / Down** – Pushing this control activates the camera display mode / down button.

**21. Latch Dial** – This dial ensures the housing is properly closed and watertight sealed, when locked fully into place. For further instructions, please refer to the sections "Opening the Housing" and "Closing the Housing".

**22. Latch Dial Lock** - Ensures the secure dial doesn't accidentally open during the dive. For further instructions, please refer to the sections "Opening the Housing" and "Closing the Housing".

**23. Menu** – Pushing this control activates the camera menu button.

**24. AF Frame Selector / Wi-Fi –**

- a. In shooting mode, press this button to move or resize the AF frame.
- b. In playback mode, press this button to operate the camera Wi-Fi functions.

**25. Anti-Glare Hood Rails –** Enable the attachment of the anti-glare hood to the housing. For further instructions, please refer to the section “Preparing the Housing”.

**26. Playback (Image Review) -** Pushing this control activates the camera playback button.

**27. Unlabeled Control –** This control does not operate any function on the G16 camera.

**28. Flash Up –** Turning this control counterclockwise pops up the camera built-in flash.

Note that once the camera built-in flash has been popped up, it can be disabled again using the *Flash Push Down Control (no. 8)*. Turning the Flash Up control clockwise will not have any effect on the built-in flash.

## THE CANON POWERSHOT G16 DIGITAL CAMERA

With performance and creative expression approaching that of an SLR camera, the new PowerShot G16 camera makes unlimited imaging not just portable, but now wireless, too! Built-in Wi-Fi® offers easy set-up and powerful capabilities: upload stills and video to Facebook®, Twitter®, YouTube™ and Flickr®; send to email; share to tablets and smartphones; print wirelessly; and transfer to PCs. You'll be eager to share the spectacular images you create with the 12.1 Megapixel High-Sensitivity CMOS Sensor and DIGIC 6 Image Processor. Together they create the Canon HS SYSTEM for significantly improved resolution in an expanded ISO range of 80-12800.

Stunning 1080p/60p Full HD video is possible thanks to the DIGIC 6 Image Processor: vividly realistic and incredibly smooth. A 5x Optical Zoom offers excellent shooting versatility and the bright f/1.8 lens performs brilliantly in low light. Continuous shooting with full resolution has been boosted up to EOS-caliber speeds, and High Speed AF puts images in focus almost the moment the camera is aimed, so you can freeze that perfect shot. Intelligent IS counteracts camera shake for clear shots in any situation. Shoot HDR photos without a tripod, and add dynamic new finishing effects. Enjoy pro-like advantages such as Multi aspect RAW, which lets you take control over the editing process.



## Canon PowerShot G16 Highlights

- 12MP 1/1.7" Canon CMOS sensor
- 28-140mm equivalent F1.8-2.8 lens, 6-stop 'Intelligent IS'
- High Speed AF with a continuous shooting speed of up to 9.3 fps
- Full HD video recording capabilities at 1080p/60p resolution
- DIGIC 6 processor
- ISO 80-12800
- Fixed 3" 920k dot PureColor II G screen
- Optical viewfinder
- Multi aspect RAW format recording in various frame ratios
- HDR scene mode
- Built-in Wi-Fi

## SETTING UP THE HOUSING

### Note

It is important that a first dive is always carried out with the housing empty (no camera installed inside) in order to verify that the housing watertight seal has not been affected during transport and after long periods of storage.

## PREPARING THE CAMERA

1. Install a memory card and a fully charged battery inside the camera.
2. Remove the camera strap from the camera if one was installed.
3. It is recommended to program the camera to the most frequently used underwater photo mode, lighting and other key settings prior to installing the camera in the housing.

## PREPARING THE HOUSING

1. When using the housing for the first time-

- a. Peel the screen protector off the back side of the housing.
- b. Install the hand lanyard on the housing by inserting it through the lanyard loop on the bottom right of the housing (facing from back), then pulling it through itself and testing it in order to make sure it is secure (image #1).
- c. Install the housing side of the diffuser quick release secure line by tying it around the upper rectangular loop at the top left side of the housing, where the Fiber Optic Cable Plate secure string is attached to as well (image #2). Please note that this line may come assembled and then there is no need for installation.
- d. Open the housing (see section “Opening the Housing” on the following page) and remove the anti-glare hood out of the housing. Secure the anti-glare hood to the housing by tying its secure string around the lower rectangular loop at the bottom left side of the housing. Install the anti-glare hood over the anti-glare hood rails at the back of the housing. First install the anti-glare hood over the top rail (image #3 on the following page) and then gently and carefully stretch it downwards to install it on the bottom rail, making sure it’s sitting securely on both upper and lower rails (image #4 on the following page).
- e. If making use of a hand strap (optional), install it on the two loops found at the right side of the housing.
- f. **It is important that a first dive with the housing is always made without the camera in order to verify that the housing watertight seal has not been affected during transport and after long periods of storage.**



Image #1



Image #2



Image #3

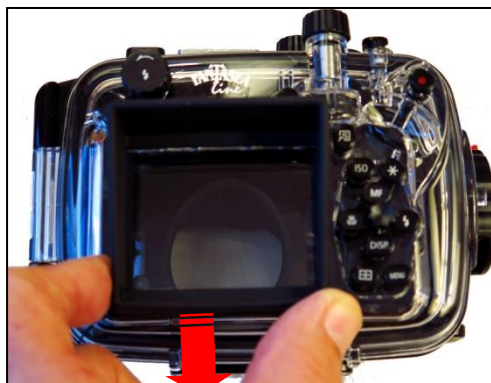


Image #4

## OPENING THE HOUSING

1. Pull the small red tab located at the bottom of the latch dial outwards (away from the housing), as indicated by the arrow direction (image #5). There is no need to apply any force.
2. While holding the lock dial up, turn the latch dial counterclockwise until the red latch tab is located at the top of the latch and cannot be turned any further (image #6). There is no need to apply any force.
3. Carefully open the back side of the housing.

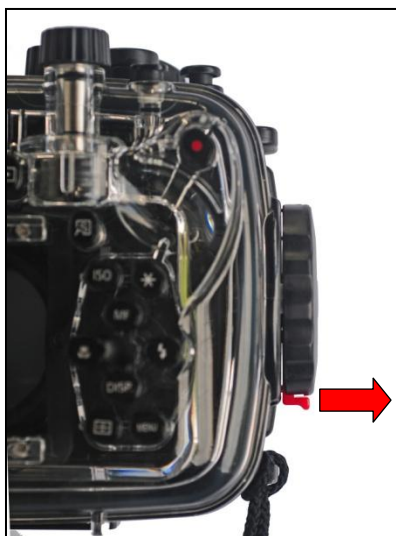


Image #5



Image #6

4. Note that when opening the housing for the first time or when opening it after airplane trips, increased resistance might be encountered. **Therefore, it is best not to lock the housing and to leave it slightly open when transporting by air.**

## CHECKING THE O-RING

1. Prior to each closure of the housing, the back door O-ring should be visually inspected. If there is any debris present, including dirt, sand, dust, hair, grease or any other matter, it must be cleaned to ensure a proper watertight seal.
2. In order to clean the O-ring, first remove it from the housing:
  - a. Insert the O-ring remover between the O-ring and the groove it is seated in (image #7).
  - b. Slip the tip of the inserted O-ring remover below the O-ring, while making sure the O-ring doesn't get damaged (image #8).
  - c. Carefully hold the O-ring with your fingertips in order to remove it from the groove.



Image #7



Image #8

3. Cleaning the O-ring is a simple matter of wiping it with a damp, soft cloth to remove the foreign matter. **Be careful the cloth you use does not leave any of its own material behind as this can also affect the effectiveness of the seal.**
4. Apply a slight layer of silicone grease on the O-ring. Please note that the amount of lubrication required on the O-ring is only enough to allow it to slip into place without friction, so it does not twist or become dislodged. More grease is not necessarily better, and in some cases might interfere with the watertight seal of the housing.
5. When replacing the O-ring, place it back into the groove starting at one corner and gently pressing it into the groove all around the housing until it is all seated in the groove and no part of it is sticking up or out of the groove.

## INSTALLING THE CAMERA

Since the **FG16 Housing** is specifically designed for the Canon PowerShot G16 digital camera, installing the camera in the housing is quite simple.

1. Make sure the camera is turned off.

2. Lift the housing Mode Dial so it doesn't interfere with camera installation (image #9).
3. Hold the camera parallel to the housing and then gently install it inside (image #10). Avoid inserting one side of the camera prior to the other, as this will make the installation difficult and might cause damage to the camera or housing.
4. **In the event of an optional moisture detector device installed inside the housing, take special care not to touch or damage the device when installing the camera. The Device is located inside the housing on the inner side of the housing latch dial (also in image #9).**

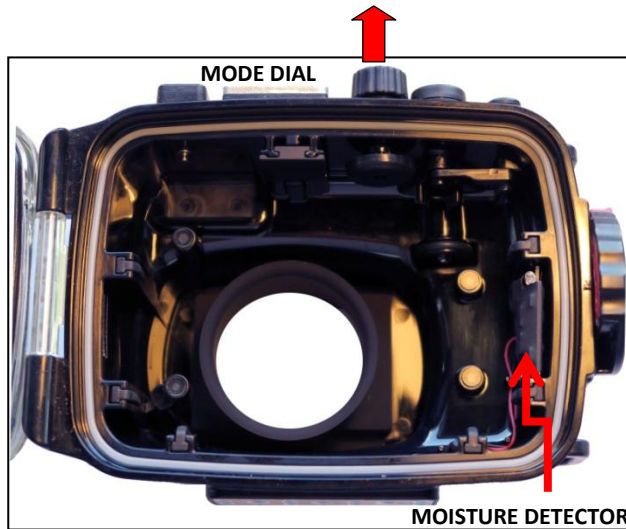


Image #9

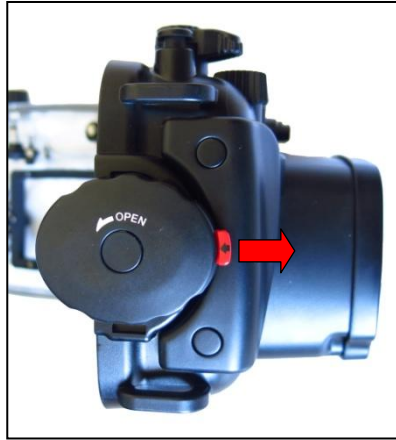


Image #10

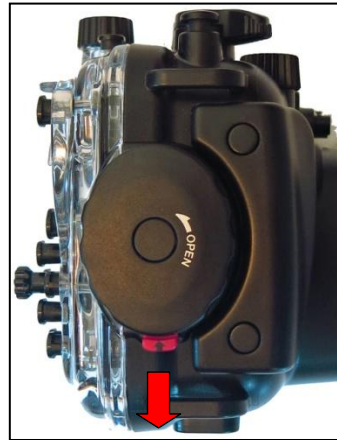
5. Once the camera is inserted inside the housing, push the housing mode dial back down, so it touches the camera mode dial.
6. If inserting a silica gel pack inside the housing in order to prevent moisture, it is best to insert it on the left side of the camera, in the slot midway up between the two rubber shock absorber mounts, where it doesn't interfere with proper housing operation. It is important to make sure that the silica gel pack doesn't stick out, or else it might interfere with the watertight seal of the housing.

## CLOSING THE HOUSING

1. Turn the latch dial so that the small red tab located on the latch is pointed towards the front side of the housing (image #11 on the following page).
2. Carefully close the back door of the housing, pushing it against the front door, while making sure there is nothing sticking out of the housing or impairing the smooth closure of the back door. Then firmly press the back door against the forward section of the housing.
3. Turn the secure dial clockwise till the lock dial clicks. The small red tab should then be pointed towards the bottom of the housing (image #12 on the following page).



**Image #11**



**Image #12**

4. Gently try pulling the back door away from the front door. If the housing is properly closed, it should be impossible to open the back door.
5. Visually inspect the O-ring through the transparent back door for proper closure. Make sure it isn't twisted or out of the groove and that no foreign matter has been caught in the seal, such as secure lines, sand, grit, hairs or any other foreign substance.
6. Turn on the camera and check that the extended camera lens does not catch or bend the black rubber seat on the inside of the lens port. It is vital that the lens does not disturb this rubber seat (image #13).
7. Test housing control buttons to make sure that the camera was properly installed inside the housing and that nothing interferes with normal operation of the camera. It is recommended to take a few images once the camera has been installed inside the housing and prior to the dive in order to ensure proper operation.
8. If making use of the internal camera flash, install the removable flash diffuser on the housing and attach the flash diffuser quick release secure string in order to avoid losing it underwater. Please refer to the section "Using the Built-in Camera Flash" for further information.
9. Prior to diving with the housing, submerge it in a shallow tub of water or rinse tank. Carefully look at the housing to make sure no bubbles are escaping from it and that no water is entering.



**Image #13**

## REMOVING THE CAMERA FROM THE HOUSING

1. After use, thoroughly rinse the housing fresh water. Prior to opening the housing, make sure both your hands and the housing are clean and dry. It is recommended to have a clean, dry and soft towel handy in order to dry your hands and the water drops on the housing.

2. When opening the housing, it is important to hold it so the lens port is facing down. This will prevent the camera from slipping out of the housing while being opened.
3. Open the housing as described in the section “Opening the Housing”, pull up the mode control and carefully remove the camera from the housing. Take sufficient care that no water drips from your hair and body onto the housing and camera.

## USING THE CAMERA BUILT-IN FLASH

1. The PowerShot G16 has a built-in flash capable of illuminating nearby underwater subjects. For stronger lighting, illuminating subjects that are farther away, avoiding backscatter, eliminating shadowing effects and photographing in deep water, an accessory slave flash is recommended. For further information, please refer to the section “External Flashes”.
2. In order to make use of the built-in camera flash, remove the Fiber Optic Cable Plate from the housing. Insert your fingers beneath the adaptors installed inside the plate and push the plate upwards till it is removed from its slot. Make sure the fiber optic cable plate is secured to the housing by the dedicated secure line in order to avoid losing it during the dive.
3. The removable flash diffuser included assists with softening the built-in flash output, increasing its angle of coverage and decreasing the amount of *backscatter* in the images (the unattractive snowstorm effect of the flash reflecting off suspended particles in the water).
  - a. In order to install the removable flash diffuser, hold and align it against the housing lens port so the concave side of the flash diffuser is facing the lens port (image #14).
  - b. Gently push the removable flash diffuser against the housing lens port till it clicks.
  - c. Attach the flash diffuser quick release secure string to the other side of the string connected to the housing in order to avoid losing the flash diffuser underwater.
  - d. In order to remove the flash diffuser from the housing, gently push it outwards starting from its top and proceeding with the bottom part of it.
4. It is best to set the camera flash mode to “Flash Always” as artificial light is required in most compositions for the purpose of color and light reproduction. This will ensure the built-in camera flash fires on every image taken regardless of ambient light available. Please refer to the PowerShot G16 instruction manual for further instructions regarding such settings.



**Image #14**

5. Turn the Flash Up dial counterclockwise in order to pop up the camera built-in flash.
6. Note that once the camera built-in flash has been popped up, it can be disabled again using the *Flash Push Down Control* on top of the housing. Turning the Flash Up control clockwise will not have any effect on the built-in flash after it has been popped up. See image on page 9.

## OPTIONAL ACCESSORIES

---

### EXTERNAL FLASHES

Underwater flashes and strobes were designed to improve the color, lighting and quality of your underwater images. Since light and color are absorbed by water, using an external flash is recommended in all depths, during daylight and night dives. In addition to retrieving the color and light absorbed by water, underwater flashes also allow for creative lighting, assist in reducing the amount of backscatter and prevent the shadowing effect caused by the housing lens port when using the built-in camera flash, especially when accessory lenses are mounted on the housing.

The **FG16 Housing** can be used with underwater slave flashes. These external flashes feature a slave sensor which triggers the external flash to fire in sync with the internal camera flash. For the full selection of Fantasea flashes and lighting sets compatible with the **FG16 Housing**, please refer to the Fantasea website – [www.fantasea.com](http://www.fantasea.com)

Most underwater slave strobes are capable of synchronizing with the internal camera flash without any cables under certain diving conditions. They feature a slave sensor that triggers the strobe to fire in sync with the camera built-in flash as long as the strobe and the camera are positioned on the same axis and as long as there is not much ambient light available. However, if the strobe slave sensor isn't pointed directly at the internal camera flash, or when photographing during daylight, in clear water and bright conditions, the slave sensor might fail recognizing the output of the internal camera flash. Connecting a fiber optic cable between the internal camera flash and the slave strobe ensures full synchronization in all angles and diving conditions.

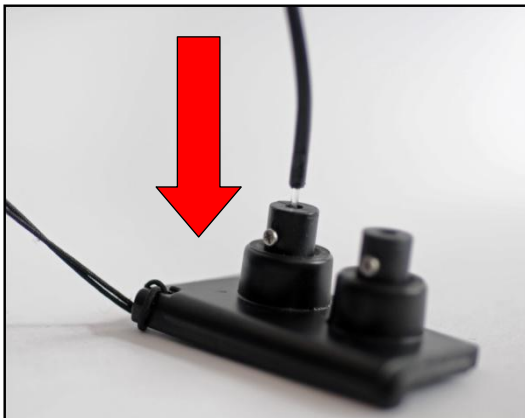
#### Attaching Fiber Optic Cables to the Housing

1. When installed on the housing, the fiber optic cable plate and the two adaptors inserted inside it allow for an easy attachment of up to 2 fiber optic cables to the housing.
2. If the fiber optic cable you have features a different type of adaptor, remove this adaptor from the end of the cable and use the adaptors included with the **FG16 Housing** instead.

3. Remove the Fiber Optic Cable Plate from the housing. Insert your fingers beneath the adaptors installed inside the plate and push the plate upwards till it is removed from its slot.
4. Prior to installing the fiber optic cable on the Fiber Optic Cable Plate, make sure that the two black adaptors are firmly and properly installed inside the plate (image #15).
5. Insert the exposed end of the fiber optic cable into the small hole of the adaptor unit, starting from the end that features a screw and pushing it towards the end that features an O-ring (image #16), until the fiber optic cable reaches the end of the adaptor, which can be verified by looking from the other side of the Fiber Optic Cable Plate. The fiber optic cable should be extending out no more than 1mm (image #17).



**Image #15**



**Image #16**



**Image #17**

6. Use the screwdriver included in order to tighten the screw on the adaptor (image #18). Tighten it enough to stabilize the fiber optic cable inside the adaptor, but don't tighten it too strongly.  
**Tightening the screw too much might damage the fiber optic cable.**
7. Once the fiber optic cable has been installed on the Fiber Optic Cable Plate, install the Fiber Optic Cable Plate by inserting it inside the dedicated slot on the housing and pushing it all the way in.
8. When installed on the housing, the Fiber Optic Cable Plate blocks the internal camera flash, so only the



**Image #18**

external slave flash illuminates the subject. This diminishes the effects of backscatter, as well as eliminates any shadowing effect caused by housing lens port, especially when lens accessories are mounted on the housing.

4. Follow the instructions in your strobe manual on how to synchronize your camera with the external strobe. It is recommended to test the synchronization when photographing opposite a mirror. In this case, the output of both the built-in camera flash and the strobe should be visible in the test shot taken.
5. **When attaching Sea&Sea fiber optic cables to the housing**, housing adaptors should first be removed off the fiber optic cable plate. This can be done by gently pulling them out from the front side of the plate, using the aid of a small needle nose set of pliers. Make sure not to damage the fiber optic cable. It's recommended to apply some silicone grease on the small o-rings of these adaptors, so they can be installed and removed more easily. Sea&Sea fiber optic cables feature an adaptor that fits right inside the fiber optic cable plate. Simply push the adaptor featured at the end of the cable into the dedicated slots on the front side of the plate, instead of the adaptors you've just pulled out, till they are fully fitted inside. Gently pull the fiber optic cable in order to make sure that it doesn't come off easily.

## FLASH & VIDEO LIGHTING SETS

A variety of Fantasea flash and video lighting sets are available for the FG16 Housing, enabling you to further enhance your images and videos. These sets include trays, Flex arms, slave flashes, powerful and stylish video lights, fiber optic cables, focus lights, padded bags and more. For a selection of lens lighting sets available, please visit the Fantasea website – [www.fantasea.com](http://www.fantasea.com)

## LENS ACCESSORIES

The **FG16 Housing** lens port is compatible with a wide variety of accessory filters and lenses, such as:

- **BigEye Wide Angle Lenses:** Perfect for shooting seascape, divers, ship wrecks and schools of fish, without moving further away from the subject, thereby still taking full advantage of water clarity and artificial light sources.
- **SharpEye Macro Lenses:** Perfect for shooting close-up images of fish, corals, textures and more. These macro lenses magnify the subject and enable the camera to focus on short distances for creating super sharp images.
- **RedEye & PinkEye Color Correction Filters:** Used to restore the colors absorbed by the water. In shallow depths, these filters can serve as an attractive alternative to artificial light sources. These filters can be mounted directly on the housing lens port, and can also be installed inside BigEye and SharpEye accessory lenses.

- **EyeGrabber Lens Holders:** Attach to Flex or Ball & Joint arms, enabling safe, secure and easily accessible storage for your lens accessories when not in use during the dive.

For a selection of lens accessories available, please visit the Fantasea website – [www.fantasea.com](http://www.fantasea.com)

## HOUSING HAND GRIP STRAP

The **FG16 Housing** features two hand strap loops on the “latch” side of the housing, which enable the attachment of an optional hand grip strap for the housing in order to improve hand grip, especially when using the housing during extreme sports activities.

Installing the Fantasea Hand Strap (Cat. No. 11188) on the Housing

1. Pull the narrow nylon Velcro strip through top of lower housing ring (below the locking latch) in a downward direction to the end of the strip (images #19 and 20).



Image #19

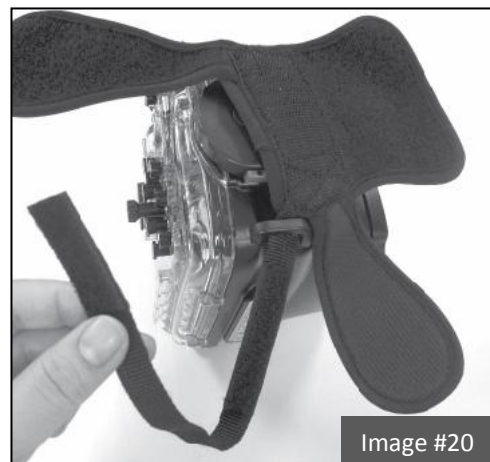


Image #20

2. Place the wide flat Velcro mid-section over the locking latch and pull the thin Velcro strip over the top of this mid-section and through the upper housing ring from bottom to top all the way through (image #21).
3. Double back the thin nylon Velcro strip and secure it tight to the top of the Velcro strip previously inserted (same strip) and press down. Then cover with the wide flap (should be on the right side) over the thin Velcro strips (image #22 on the following page).
4. Place top flap (with logo) over bottom flap and press to close (images #23, 24 on the following page).

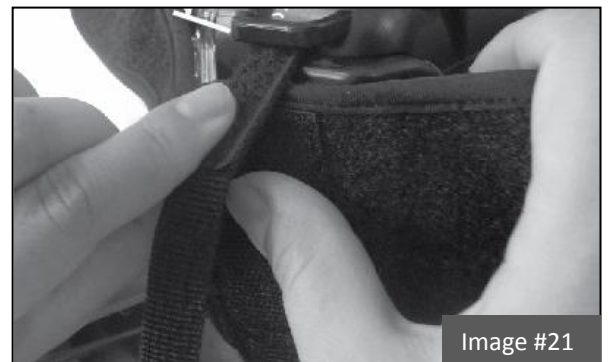


Image #21



Image #22



Image #23

5. To use, slide right hand from back side to front of the Hand Strap with knuckles protruding slightly out of the front (lens side) of the strap (image #24). Have it snug but not too tight, to allow for control manipulation.
6. Always use the wrist lanyard with the hand strap.
7. When opening or closing the housing, you may need to loosen the Hand Strap slightly in order to rotate it forward to allow for easier opening and closing of the latch.
8. When closing the housing, take special notice and care not to close part of the Hand Strap inside the housing, which will interfere with the watertight seal of the housing.
9. Make sure to rinse the Hand Strap in fresh water and then dry after every use. Store in a dry, shaded area.



Image #24

## COLD-SHOE CONNECTOR FOR LIGHTING ACCESSORIES

The Cold-Shoe Mount featured on the housing enables mounting a flash, video light, night dive torch or focus light on top of the housing by using a standard Cold-Shoe connector mount. For further information regarding such connectors, lights and flashes, please visit the Fantasea website – [www.fantasea.com](http://www.fantasea.com)

## MOISTURE DETECTOR

An optional moisture detector device can be installed inside the housing (on the inner side of the housing latch dial – see image #9) in order to detect moisture. Moisture detectors are very sensitive, so whenever moisture is detected by the sensor located at the bottom of the housing, the moisture detector LED light begins flashing and a warning alarm starts beeping, thereby alerting the user of a possible leak. Drying the sensor off should stop this beeping. The detector battery can be replaced quite easily by carefully pulling

the detector out and peeling off the protective film which holds the battery in place. For further instructions and Fantasea Moisture Detectors available, please visit the Fantasea website –

[www.fantasea.com](http://www.fantasea.com)

## FG16 HOUSING ACCESSORY SYSTEM



## CARE & MAINTENANCE

The Fantasea **FG16 Housing** requires only a minimum amount of care for safe and reliable performance. The following tips will enable you to get the best results:

1. Always rinse your housing in streaming fresh water and if possible soak the housing in a fresh water tub or rinse tank for about 20 minutes after every dive in order to dissolve the salt water crystals from around the controls and openings of the housing. Manipulate each of the movable controls to assist the removal of salt particles from these tight areas.
2. Allow the housing to dry thoroughly before packing away for the day or for the trip home. You may use a soft towel or cloth to dry the housing. Be sure there is no grease or other debris on the towel.
3. Visually check the condition of the O-ring before every dive. If it is dirty, clean it with fresh water and dry it with a soft cloth as described throughout the manual. If it is damaged in any way, such as cut or perforated, replace it before using the housing again.
4. It is recommended to slightly lubricate the housing back door O-ring periodically. It's important to note that the amount of lubrication required on the O-ring is only enough to allow it to slip into place without friction, so it does not twist or become dislodged. More grease is not necessarily better, and in some cases might interfere with the housing watertight seal.
5. Use only the supplied silicone grease for lubricating the housing back door O-ring. Use of any other grease might impair the watertight seal of the housing.
6. Be careful not to get greasy fingerprints or dirt on the lens port. This will affect the image quality. Wipe any dirt or grease off with fresh water and a soft cloth.
7. Do not drop the housing on hard surfaces, it could crack and its watertight seal might be damaged.
8. Do not disassemble or modify the housing, as this may cause leaks.
9. Do not leave the housing in direct sunlight, inside a car in hot weather, or near a heater. Heat may warp the housing and cause leaks. If you have to leave the housing in the sun, it is important to cover it with a towel.
10. Travel with the housing protected in a padded case. It is best to remove the camera from inside the housing when traveling and to provide it with its own protective case or compartment.
11. Never dive with the Fantasea **FG16 Housing** to a depth greater than 60 meters/200 feet.
12. It is important to carry out the first dive without the camera inside the housing. Check that the watertight seal has not been affected during transport and long periods of storage.

13. It is likewise recommended to visually monitor the housing during every descent, especially for the first 10 meters/33 feet. If water is observed entering the housing or bubbles escaping from it, the housing should be rotated to a *port down position* and held that way as you return to the surface immediately and get it out of the water.
14. It is recommended to have all Fantasea housings serviced once a year at an authorized Service Center. This includes visual inspection and possible changing of all seals, gaskets and O-rings. Please contact Fantasea by email at [info@fantasea.com](mailto:info@fantasea.com), or visit the Fantasea web site [www.fantasea.com](http://www.fantasea.com) for more information.

## FANTASEA PRODUCT CONSUMER LIMITED WARRANTY

---

“Fantasea” warrants this Fantasea Line branded product against defects in materials and workmanship under reasonable use for a period of ONE (1) YEAR, (two years, where required by law as determined by the origin of the authorized dealer). This warranty is effective from the date of retail purchase from Fantasea or an authorized Fantasea dealer, by the original end-user purchaser (“Warranty Period”). This warranty does not cover any commercial use of the product. If a product defect arises and a valid claim is received within the Warranty Period, at its option, Fantasea, or its authorized service facilities will either (1) repair the product defect at no charge, (2) exchange the product with a product that is new or which has been manufactured from new or serviceable used parts and is at least functionally equivalent to the original product. The warranty will not extend beyond the original warranty period. Your Fantasea Product should be registered within 30 days of purchase. You must keep the proof of purchase which indicates the date on which the purchase was made; as you may be required to show proof of purchase if you need warranty service. The following conditions apply: 1. This warranty extends to the original purchaser only. It is not assignable or transferable. 2. The warranty does not cover damage resulting from misuse, abuse, negligence, or accidents. Proper maintenance of the Product is the responsibility of the owner. 3. The warranty does not cover damage directly or indirectly resulting from the use of unauthorized replacement parts or service performed by unauthorized facilities. 4. This warranty does not cover any damage to any other product used in conjunction with the Fantasea product, including cameras and lenses, and resulting from any defect in the product materials or workmanship. 5. The cost of sending the product back to Fantasea or its authorized service facilities is the responsibility of the customer. 6. The warranty does not cover any incidental damages resulting from any defects in the product. This expressly includes any travel reimbursements or any other costs associated with the purchaser’s optional use of the product. The conditions of this warranty are expressly in lieu of all other expressed warranties, including the payment of consequential or incidental damages for the breach of any warranty. Please register your product on line at this URL: <http://www.fantasea.com/registration>.

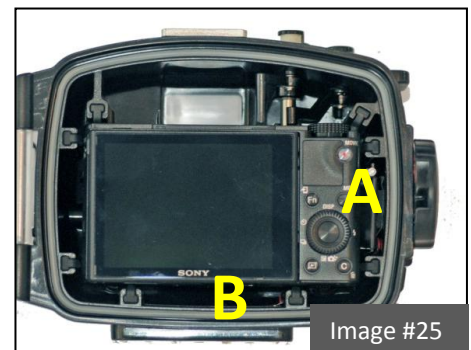
## FANTASEA MOISTURE DETECTOR

### Note!

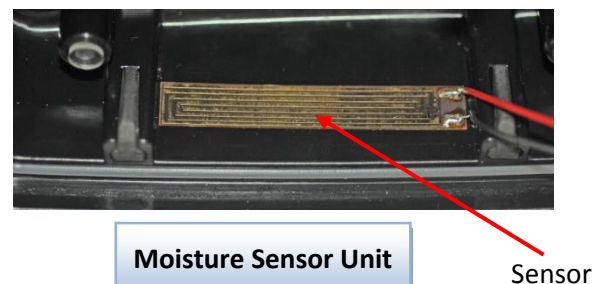
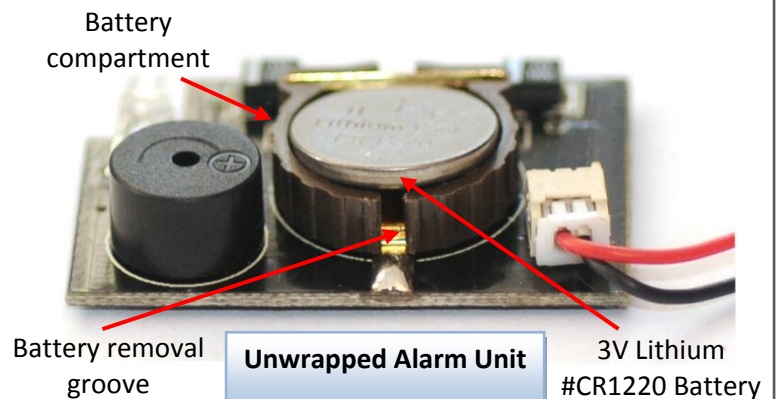
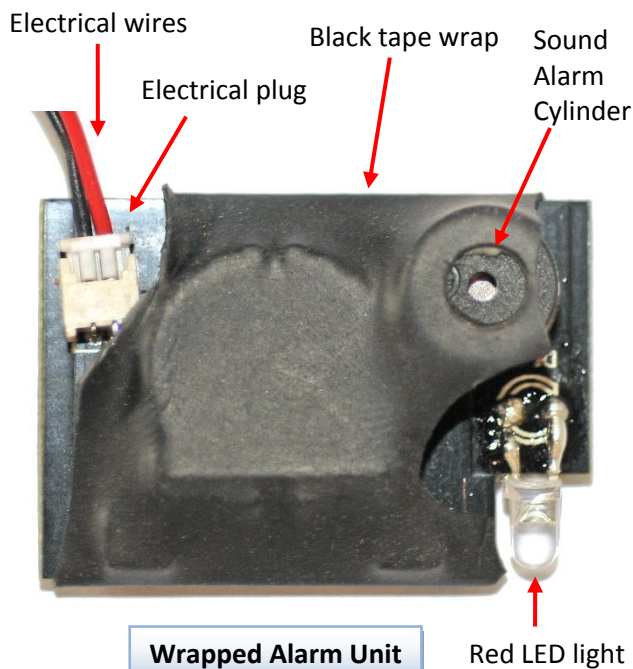
Never soak or wash the interior of the housing with water. This will set off the alarm in a way that cannot be disabled, eventually causing irreparable damage to the electronic unit!

The moisture detector is a bonus add-on component and not an integral part of the housing. Accordingly, it is not part of the housing warranty coverage. The moisture detector has no warranty coverage.

The alarm unit of the Moisture Detector is installed inside the housing, opposite the latch dial (image #25 – item **A**). The Moisture Sensor unit is installed just under the camera (image #25 – item **B**). A thin wire connects these units. Moisture detectors are very sensitive, so whenever moisture is detected by the sensor, the moisture detector LED light begins flashing and a warning alarm starts beeping, thereby alerting the user of a possible leak.

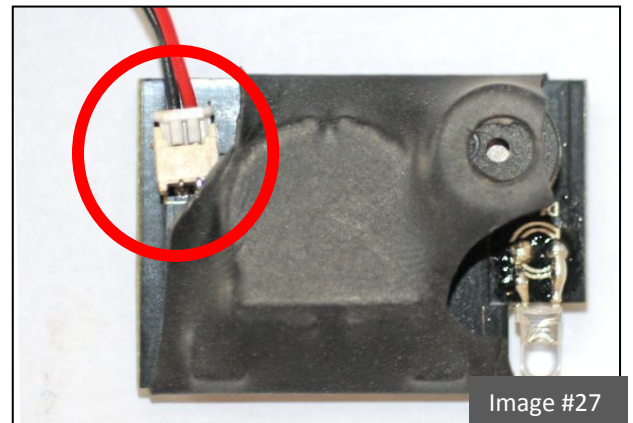
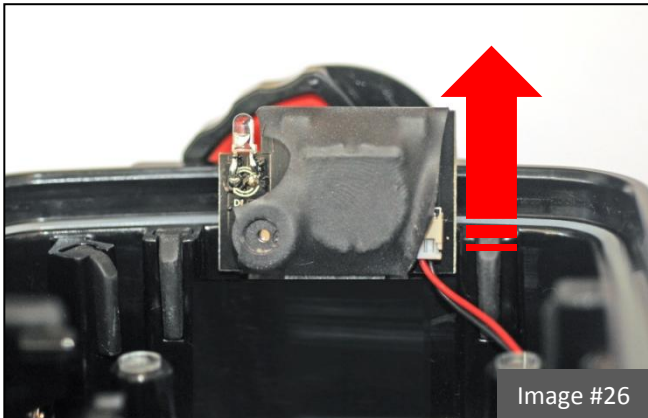


### IDENTIFICATION OF PARTS



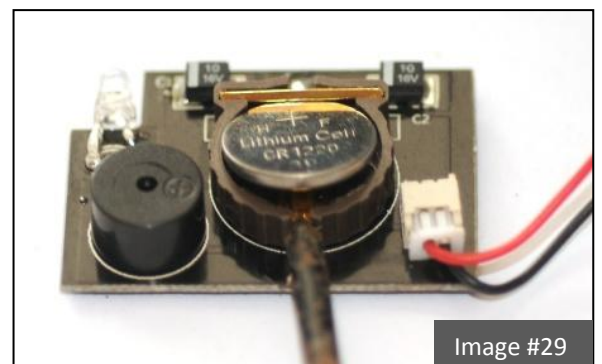
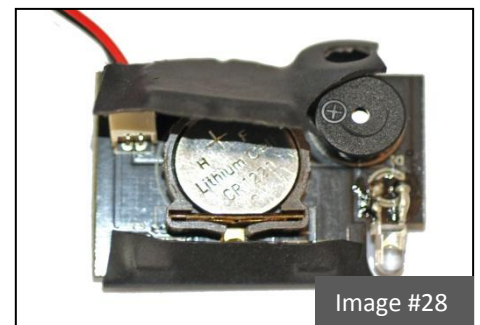
## SILENCING THE ALARM

1. In order to silence the alarm after it goes off, wipe the Moisture Sensor unit at the bottom of the housing gently with a soft dry cloth in order to dry it off.
2. If this doesn't help, remove the alarm unit from the housing by gently sliding it out of its slot (image #26).
3. Expose the white electrical plug under the black tape wrap (image #27).
4. Disconnect the electrical wires plug from the alarm unit socket.



## REPLACING BATTERIES

1. Remove the alarm unit from the housing by gently sliding it out of its slot (image #26).
2. Disconnect the electrical wires plug from the unit socket (image #27).
3. Peel the black tape wrapped around the Alarm unit by gently cutting it with a utility knife (image #28). Make sure that the knife doesn't come in contact with the unit under the tape and that you only cut the tape.
4. Remove the old battery by lifting it with a small screwdriver through the battery removal groove (image #29).
5. Prepare a new **3V Lithium #CR1220** battery, widely available at any hardware store or watch repair shop.
6. **IMPORTANT! The battery should be installed with the "+" symbol facing up and out of the unit!**



7. Gently push the new battery it into the battery compartment and make sure it doesn't fall off easily.

### **WARNING**

**Install only 3V Lithium #CR1220 batteries inside the Moisture Alarm unit. Using any other type of batteries will cause irreparable damage to the electrical unit.**

8. To secure the battery and make sure it doesn't fall out of place, wrap the battery compartment area with a small piece of electrical tape. Be careful not to cover the round cylinder which produces the alarm sound. Alternatively, you can wrap the whole alarm unit with tape and then make a hole over the alarm cylinder (image #30).
9. Insert the electrical wires plug back into the alarm unit socket.
10. Slide the alarm unit back into the dedicated slot inside the housing, opposite the buckle. Make sure to install the unit with the round alarm cylinder facing the housing interior and the LED pointing outwards, to the back of the housing (image #31).

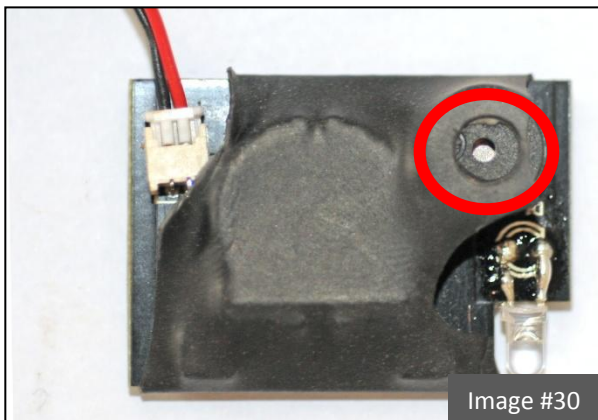


Image #30

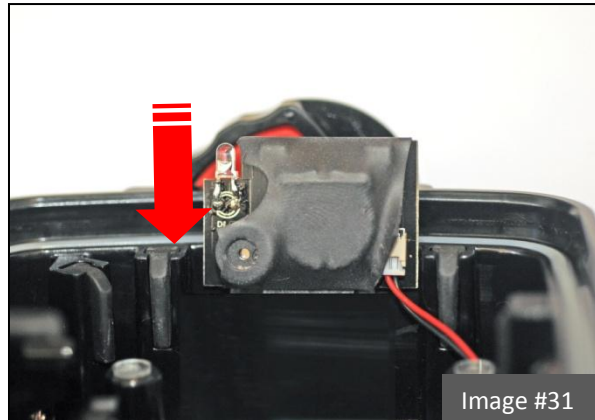


Image #31

11. You can test the Moisture Detector by placing a wet finger over the moisture sensor unit at the bottom of the housing. Once you have confirmed that the alarm is working, gently dry off the moisture sensor unit. This should silence the alarm.

## **REPLACING THE ALARM UNIT**

1. Remove the alarm unit from the housing by gently sliding it out of its slot (image #26 on the previous page).
2. Expose the white electrical plug under the black tape wrap (image #27 on the previous page).
3. Disconnect the electrical wires plug from the alarm unit socket.
4. Connect the electrical wires plug to the socket of a new alarm unit.

5. Slide the alarm unit back into the dedicated slot inside the housing, opposite the buckle. Make sure to install the alarm unit with the round alarm cylinder facing the housing interior and the LED pointing outwards, to the back of the housing (image #31 on the previous page).
6. You can test the Moisture Detector by placing a wet finger over the moisture sensor unit at the bottom of the housing. Once you have confirmed that the alarm is working, gently dry off the moisture sensor unit. This should silence the alarm.

For further information, please visit our website  
[www.fantasea.com](http://www.fantasea.com) or contact us at [info@fantasea.com](mailto:info@fantasea.com)