

ImageMixer VCD

»» [Tutorial](#)

»» [Reference](#)



Create a Video CD!

ImageMixer with VCD (IMxVCD) is an [authoring](#) application for creating Video CD movies.

After adding your movies, you can create the [movie buttons](#) for the [menu screen](#) displayed when the Video CD is played. Design your own menu screen with custom movie button settings, background images, and music.

The movie buttons are assigned [selection numbers](#). You can play the selection button content by using the remote control of your playback device. For example, to play movie assigned to number [1] on the menu screen, press [1] on your remote control. (Actual operation varies depending on your playback device.)

Follow these steps to create your own Video CD.

Important

Be sure to read the [Precautions](#).

Macintosh users cannot directly record Video CDs using IMxVCD. On a Macintosh, use IMxVCD to create a [Video CD image](#) that is compatible with the CD burning application Toast by Roxio, Inc. To use Toast for Video CD recording, refer to the separate instructions.

Reference

For feature details, please read the [Reference](#) section.



Add Your Movies

First, launch IMxVCD and add the movies to be recorded on your Video CD. The movies you add will be displayed as movie buttons on the menu screen when you play the Video CD.



Customize the Menu

Apply a layout design, background image, and music to the menu screen displayed when the Video CD is played.



Preview the Video CD

Check the results of your authoring by playing a preview.



Output

Record the content you have authored on a Video CD, or prepare a Video CD image for recording.



Copyright © 2002, PIXELA Corp. All rights reserved.



Add Your Movies

The movies you add will be displayed on the Layout environment as [movie buttons](#). You can add multiple movies for movie buttons until the capacity indicator bar is full -- up to 6 on single [menu screen](#).

Important

When the number of movies reaches 97 for a single [project](#), no more can be added.

1. Launch ImageMixer.



Click [Start], go to [Programs]-[PIXELA]-[ImageMixer], and select [ImageMixer with VCD].

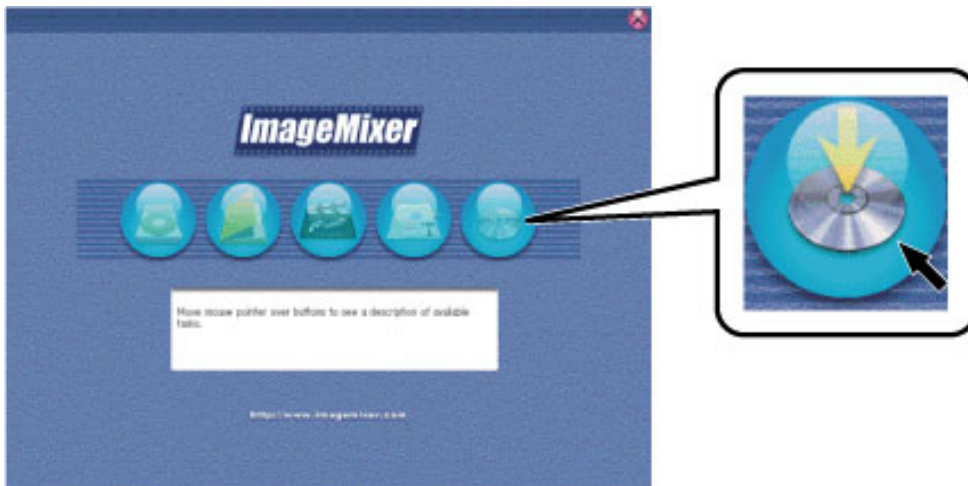
Note

If you created a shortcut during installation, you can double-click on the [ImageMixer with VCD] shortcut icon on your desktop to launch ImageMixer.

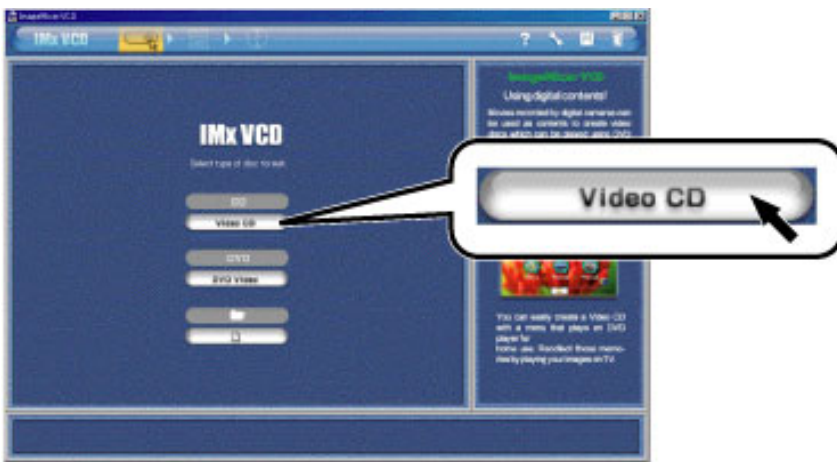


Double-click on the [ImageMixer with VCD] icon in the [ImageMixer] folder installed on your hard disk.

2. When the mode selector is displayed, click the [IMxVCD] button at the far right.



3. After ImageMixerVCD (IMxVCD) is launched, the [Start Screen](#) is displayed. Click the [Video CD] button.



4. When the [Layout environment screen](#) is displayed, drag and drop your ① movies directly from desktop to the Layout environment screen.

② The movies that you add here to the Layout environment screen will be displayed as [movie buttons](#) on the [menu screen](#).

To add multiple movies, repeat step 3.



Note

Windows users can add movies through Windows Explorer.

You can also specify movies to add in the dialog box displayed after clicking the [Add Movie] button in the Layout environment screen.



Customize the Menu (1)

>>> Preferences

>>> Style Settings

- Apply a style to the [menu screen](#)
- Specify the background for the menu screen

>>> Customize the Movie Button Labels

- Rename the [movie buttons](#)
- Modify the movie button font settings

>>> Title Settings

- Rename the menu screen title
- Modify the menu screen title font settings



STEP 2

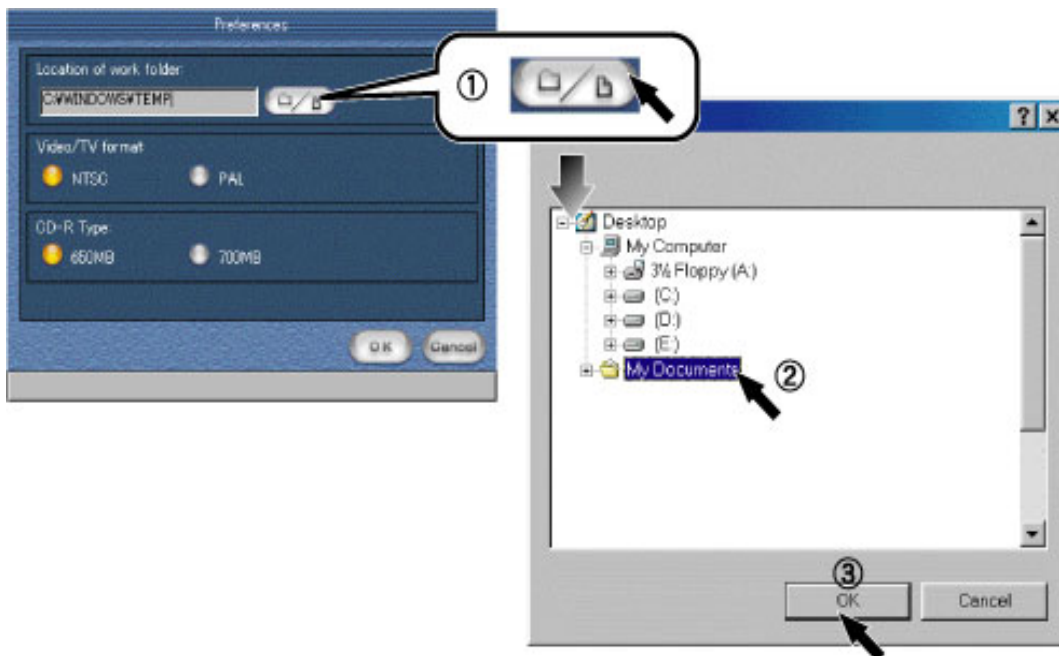
Customize the Menu (2)

Preferences

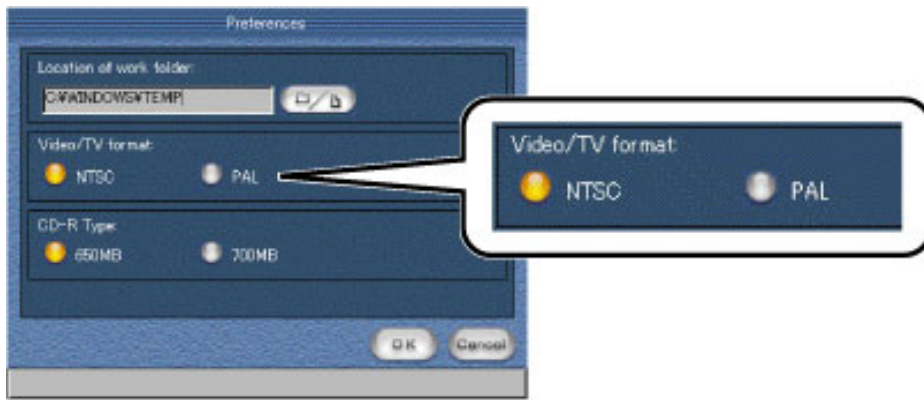
1. On the [Navigation Bar](#), click the [Preference] button to display the [Preference](#) dialog box.



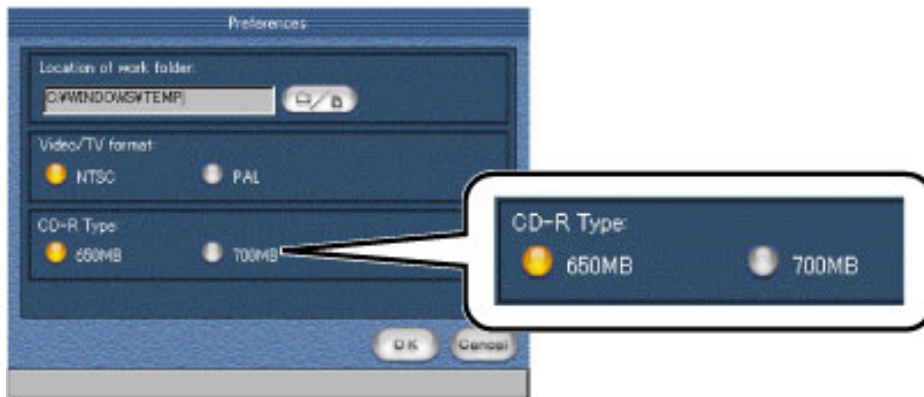
2.
 - 1 Click the [Browse...] button.
 - 2 In Windows, select the folder for your IMxVCD/DVD project. (Macintosh users select the workspace hard disk for your project).
 - 3 Click the [OK] button.



3. Select the [\[Video/TV format:\]](#) for your [Video CD](#).



4. Select the disk capacity for your Video CD.



 Note

You can adjust the preference anytime by clicking the [Preference] button on the [Navigation Bar](#).



STEP 2

Customize the Menu (3)

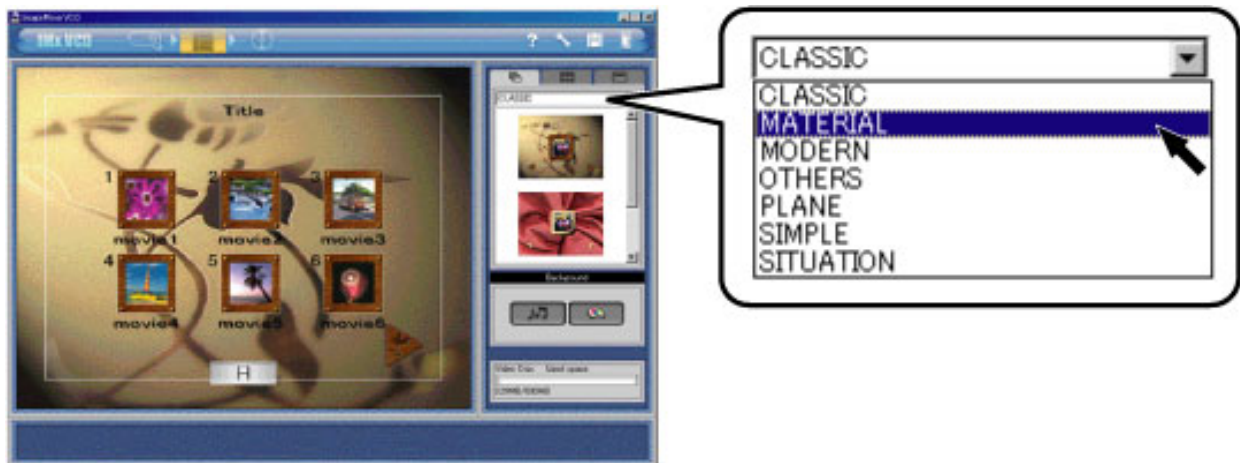
Style Settings

Apply a Style to the Menu Screen

1. Click the [Style:] tab to display the [Style:] settings panel.



2. Click to select from the [Style Category]. The style template is displayed.



3. Click the style template to apply the style.
Your selected style will be applied to the [Layout environment screen](#).



Specify the Background for the Menu Screen

1. Click the [Style:] tab to display the [Style:] settings panel.



2. Follow the steps below to apply a background still image file.

Important

Only still images file can be applied as background images.

([Browse](#))

- ① Click the [Apply background image] button to display the dialog box.
- ② Select your still image file.
- ③ Click the [Open] button.



(————— Drag and Drop —————)

Drag and drop the still image file icon directly from the desktop to the [Apply background image] button.



 Note

In Windows, you can also apply the background image by dragging and dropping the image from Windows Explorer. Click the [\[Apply BGM\]](#) button and follow the same steps as for applying background images to add audio files as music for your background image.





STEP 2

Customize the Menu (4)

Customize the Movie Button Labels

Rename the Movie Button Labels

1. ① Click the [Movie Buttons] tab. ② Click the [Text] tab to display the [Movie Buttons](#) settings panel.



2. ③ Select a movie button shown in the [Layout environment screen](#) to display a text box with the current button label.
④ Enter the new movie button label.

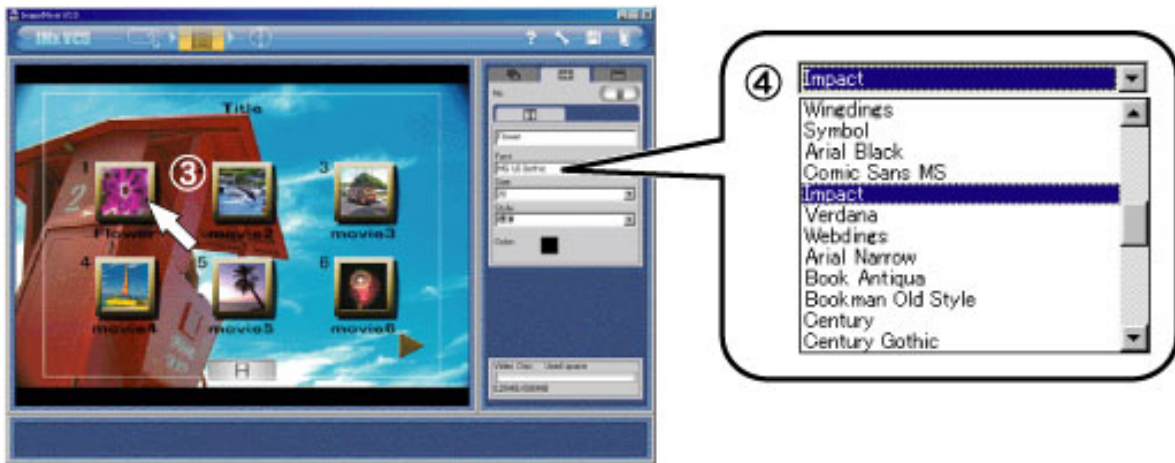


Modify the movie button font settings

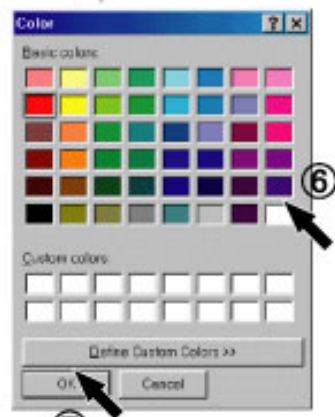
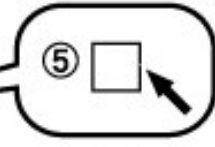
1. ① Click the [Movie Buttons] tab. ② Click the [Text] tab.



2. ③ Select a movie button. ④ Select the label font, size, and style from the dropdown menu.



3. ⑤ Click the font color preview box to display the color palette. ⑥ Select your preferred color for the movie button label. ⑦ Click the [OK] button.



Copyright © 2002, PIXELA Corp. All rights reserved.



STEP 2

Customize the Menu (5)

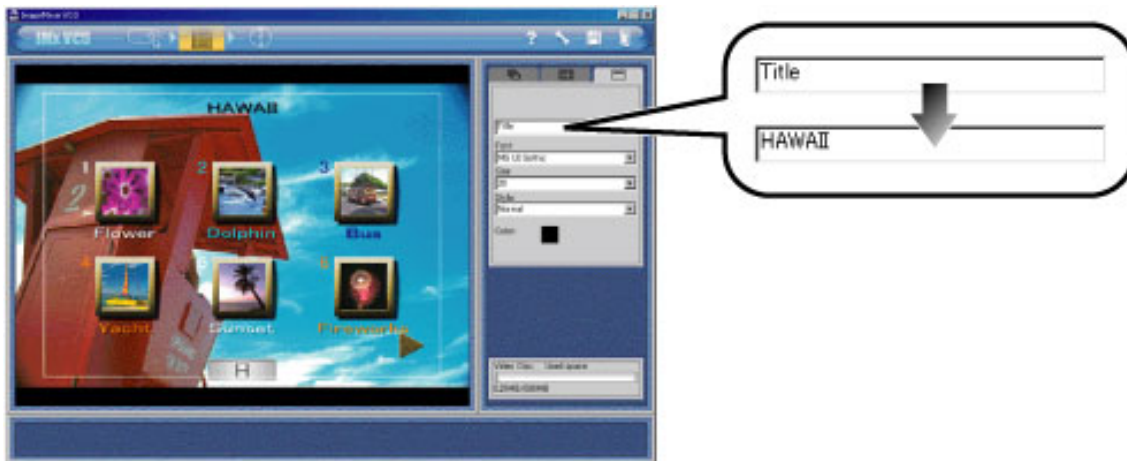
Title Settings for the Menu Screen

Rename the menu screen title

1. Click the [Title] tab to display the [Title] settings panel.



2. The current menu screen title is displayed in the text box. Enter the new title.

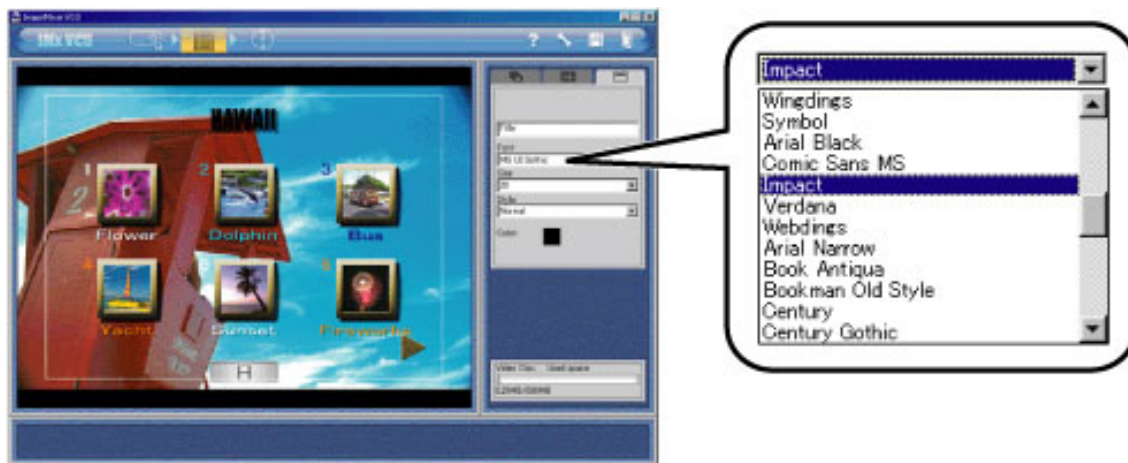


Modify the menu screen title font settings

1. Click the [Title] tab to display the [Title] settings panel.



2. From the dropdown menus, select your preferred title font, size, and style.



3. ① Click the font color preview box to display the color palette. ② Select your preferred color for the title. ③ Click the [OK] button.



STEP 3

Preview the Video CD

Play a preview to check the results of your [authoring](#).

To play a preview, click the [Preview/Output] button on the [Navigation Bar](#).



The Selection Numbers match the control button numbers, and they correspond to the selection numbers on the remote control of the Video CD playback device.

For example, clicking button [1] of the [Preview] panel will play the movie of selection number [1] on the current menu screen. Clicking button [3] of the [Preview] panel will play the movie of selection number [3] on the current menu screen.



If there are multiple menu screens, click the ① [Previous] button or the ② [Next] button in the [Preview] panel to switch between menu screens.



STEP 4

Output

Create your [Video CD](#) or [Video CD image](#).

Important

Be sure to read the [Precautions](#).

Windows

1. Click the [Output] button.

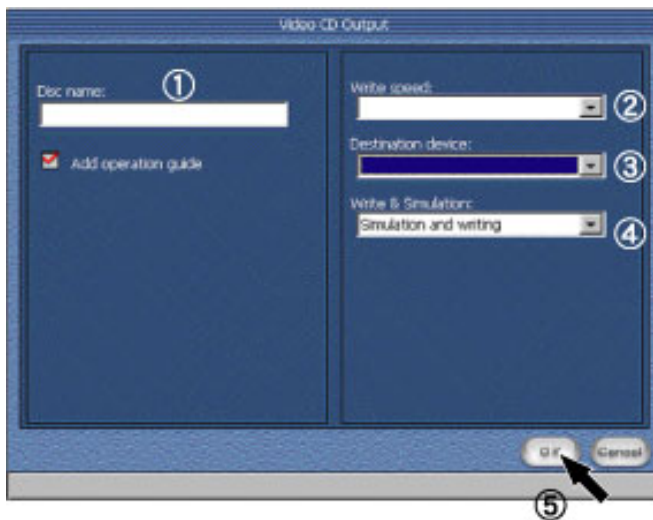


2. The [\[Video CD Output\]](#) dialog box is displayed. ① Enter the disk name for your [Video CD](#).

Important

For the disk name, you can enter up to 30 single-byte letters, numbers, or the underscore symbol.

3. ② Select the recording drive, ③ the write speed, and ④ the recording settings.
4. ⑤ Click the [OK] button to create your Video CD.



Macintosh

Important

Macintosh users cannot record Video CDs directly using IMxVCD. On a Macintosh, use IMxVCD to create a [Video CD image](#) that is compatible with the CD burning application Toast by Roxio, Inc. To use Toast for Video CD recording, refer to the separate instructions.

1. Click the [Output] button.

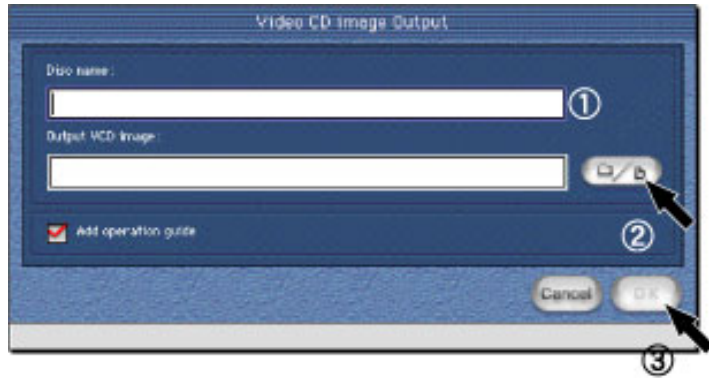


2. The [Create Video CD Output] dialog box is displayed. ① Enter the disk name for the Video CD to be created. ② Specify a folder to save the Video CD image.

 **Important**

For the disk name, you can enter up to 30 single-byte letters, numbers, or the underscore symbol.

3. ③ Click the [OK] button to create your Video CD image.
The Video CD image created will be saved as a file called [Cdimage] in the specified folder.



Tutorial

[Step 1: Add Your Movies](#)[Step 2: Customize the Menu](#)[Step 3: Preview the Video CD](#)[Step 4: Output](#)

Reference

[Getting Started](#)[Before Use](#)[Important Notices](#)[IMxVCD Functions](#)[User Environment](#)[Precautions](#)[Uninstallation](#)[Launching IMxVCD](#)[Exiting IMxVCD](#)[Start Screen/Elements](#)[Navigation Bar](#)[Layout environments/Elements](#)[Style Settings Panel](#)[Movie Button Settings Panel](#)[Title Settings Panel](#)[Preview and Output/Elements](#)[Preview Panel](#)[Video CD Output \(Windows\)](#)[Video CD Image Output \(Macintosh\)](#)[Preferences](#)[User Interface Notes](#)[Supported File Formats](#)[Glossary](#)[Compatible Recording Drives](#)

Getting Started

Thank you for using ImageMixer with VCD (IMxVCD).

This manual will help you make the most of IMxVCD. To ensure correct use, be sure to read this manual.

Check the ReadMe.txt file (for Windows) or Read Me First (for Macintosh) for any late-breaking news that we could not include here.







Homepage

The latest information on ImageMixer can be found on our home page:

<http://www.imagemixer.com/>

Before Use

Software and User's Guide Precautions

- The appearance or specifications of this software is subject to change for improvement without notice.
- Be advised that we cannot be held liable for the effects of using this software.
- We cannot in any way be held liable for bodily injury or property damage arising from use in devices or systems requiring a high level of reliability, such as healthcare devices or systems.
- Be advised that the use of recorded images and video may be prohibited regardless of the purpose or application.
- Enjoy your recordings of images, audio, performances, exhibitions, and the like for private use. Other unauthorized use is prohibited under copyright law.
- Unauthorized reproduction of all or part of this manual is prohibited.
- We have taken all possible measures for accuracy in preparing the content of this manual. However, if you happen to notice any inaccuracies, please contact us.
- This manual does not include basic operating instructions for Windows and Macintosh computers. The basic user tasks for this software, such as windows operations, are based on general Windows and Macintosh tasks.
- Most screenshots used for examples in this manual are from the Windows environment. There may be a slight difference in screen appearance between Windows and Macintosh environments. In some cases, the image fit may be inexact.
- The company and product names used in this software and manual are the trademarks or registered trademarks of their respective companies. No symbols such as ® or ™ are used in this manual.
- This manual identifies caution items with this symbol:  Important]. Helpful items for your consideration are marked with  Note] and  Browse*] is used to refer you to other pages with additional information. Click the hyperlinks to jump to pages with related content.
- In this manual, the symbol [] instructs you to click; [] indicates to double-click, and [] is for drag and drop.

Trademark Notice

- Windows ® is a registered trademark of Microsoft Corporation in the U.S. and/or other countries.
Windows refers to the Microsoft ® Windows ® Operating System.
- Macintosh is a trademark of Apple Computer, Inc., registered in the U.S. and other countries.
- Other company and product names used in this manual are the trademarks or registered trademarks of their respective companies.

Caution

1. All rights for the manual and software application (hereafter, "this product") developed by PIXELA Corporation and recorded on the installation CD-ROM are the property of PIXELA Corporation.
2. Unauthorized reproduction of all or part of this product is strictly prohibited.
3. This product is subject to change without notice.
4. PIXELA Corporation does not offer any warranty for this product. In no event shall PIXELA Corporation be liable for any consequential, incidental, special, or exemplary damages arising from defects of this product, whether or not PIXELA Corporation may have been advised that any such damages might or could occur. Similarly, PIXELA Corporation shall in no way be held liable for any costs required to restore or recreate the user's computer programs or data after use of this product.

All rights to the image data (including illustrated characters) recorded on the CD-ROM are protected by copyright law. Unauthorized sale, rental, transmission, or reproduction by any third party without the written permission of the copyright holder is prohibited. Be advised that actions that violate the copyright law are punishable under law. PIXELA Corporation hereby grants you the use of the image data on the CD-ROM exclusively for personal use. You may not reproduce the image data on the CD-ROM for commercial use. Furthermore, you may not modify or adapt the data in part for commercial use.

Content distributed by



Tutorial

[Step 1: Add Your Movies](#)[Step 2: Customize the Menu](#)[Step 3: Preview the Video CD](#)[Step 4: Output](#)

Reference

[Getting Started](#)[Before Use](#)[Important Notices](#)[IMxVCD Functions](#)[User Environment](#)[Precautions](#)[Uninstallation](#)[Launching IMxVCD](#)[Exiting IMxVCD](#)[Start Screen/Elements](#)[Navigation Bar](#)[Layout environments/Elements](#)[Style Settings Panel](#)[Movie Button Settings Panel](#)[Title Settings Panel](#)[Preview and Output/Elements](#)[Preview Panel](#)[Video CD Output \(Windows\)](#)[Video CD Image Output \(Macintosh\)](#)[Preferences](#)[User Interface Notes](#)[Supported File Formats](#)[Glossary](#)[Compatible Recording Drives](#)

Important Notices

Before installing IMxVCD, please read the following software licensing agreement. By installing IMxVCD, you agree to the conditions presented below.

Software Licensing Agreement

By following the following conditions of this software licensing agreement (hereafter, "agreement"), you are hereby granted nonexclusive, nontransferable rights to use this software program (hereafter, "program"), the manual, and accessories by PIXELA Corporation.

Conditions

- You are granted nonexclusive rights to install this program for use on one computer, these rights do not extend to third parties.
- You may make one copy of this software in machine-readable format solely for back-up purposes, provided you reproduce the copyright notice in its original form.

Restrictions

- You may not use this software on a network. Use on multiple computers on a network requires you to obtain separate agreements from PIXELA Corporation for each computer.
- You may not sublicense, transfer, distribute, lend, or otherwise make this program available for use by a third party or cause it to be used by a third party.
- You may not modify, adapt, decompile, reverse engineer, or disassemble this software in whole or part. Furthermore, you may not cause a third party to perform these acts.

Termination

This agreement is automatically terminated and PIXELA Corporation may take other legal action if you reproduce this program or accessories in whole or part without authorization or if you violate any of the above conditions. In the event of termination of this agreement, you must return this program, the accessories, and all copies to PIXELA Corporation.

Warranty and Liability

No warranty express or implied is granted for this software or accessories with regard to its merchantability or its suitability or fitness for your particular purposes. Furthermore, PIXELA Corporation does not warrant the functions of this product to meet your requirements, nor is this product warranted to operate consistently and without errors. In no event shall PIXELA Corporation be liable for any loss or damage whatsoever, whether direct or indirect, connected with the use of this program, nor be liable for any disputes between you and a third party arising directly from use of this program or related to its use.

Tutorial

[Step 1: Add Your Movies](#)[Step 2: Customize the Menu](#)[Step 3: Preview the Video CD](#)[Step 4: Output](#)

Reference

[Getting Started](#)[Before Use](#)[Important Notices](#)[IMxVCD Functions](#)[User Environment](#)[Precautions](#)[Uninstallation](#)[Launching IMxVCD](#)[Exiting IMxVCD](#)[Start Screen/Elements](#)[Navigation Bar](#)[Layout environments/Elements](#)[Style Settings Panel](#)[Movie Button Settings Panel](#)[Title Settings Panel](#)[Preview and Output/Elements](#)[Preview Panel](#)[Video CD Output \(Windows\)](#)[Video CD Image Output \(Macintosh\)](#)[Preferences](#)[User Interface Notes](#)[Supported File Formats](#)[Glossary](#)[Compatible Recording Drives](#)

IMxVCD Functions

Create your own Video CDs!

IMxVCD is authoring software for creating Video CDs that conform to the standards described below. Video CD is an abbreviation for Video Compact Disc. Stated simply, a Video CD is a recording of video images (in MPEG-1 format, similar in quality to VHS or videotapes) and audio data produced by a recording drive. Video CDs can be played on compatible computers and DVD players.

Standards of Video CD Created with IMxVCD

IMxVCD creates Video CD and Video CD images that conform to the Video CD Ver2.0 standard. This standard offers advantages such as playback control functions, which allow users to access menus to choose the playback order.

It supports the common TV signal formats [NTSC and PAL](#).

The image bitrate is 1.15 Mbps, and the resolution is 352x240 pixels (30 fps) for NTSC and 352x288 pixels (25 fps) for PAL. The audio format is MPEG-1 (Layer 2) at 224 kbps, in 1 stereo or 2 mono channels.

Using IMxVCD to Create Video CDs (for Windows)

In the past, the main recording method involved creating a Video CD image and then using CD recording software to record it. Now you can use IMxVCD for direct recording with devices such as CD-R drives that support Video CD burning. There's no need for CD recording software. Right after [authoring](#), you're ready to record.

Tutorial

[Step 1: Add Your Movies](#)[Step 2: Customize the Menu](#)[Step 3: Preview the Video CD](#)[Step 4: Output](#)

Reference

[Getting Started](#)[Before Use](#)[Important Notices](#)[IMxVCD Functions](#)[User Environment](#)[Precautions](#)[Uninstallation](#)[Launching IMxVCD](#)[Exiting IMxVCD](#)[Start Screen/Elements](#)[Navigation Bar](#)[Layout environments/Elements](#)[Style Settings Panel](#)[Movie Button Settings Panel](#)[Title Settings Panel](#)[Preview and Output/Elements](#)[Preview Panel](#)[Video CD Output \(Windows\)](#)[Video CD Image Output \(Macintosh\)](#)[Preferences](#)[User Interface Notes](#)[Supported File Formats](#)[Glossary](#)[Compatible Recording Drives](#)

User Environment

Note that even if your operating environment meets the requirements for IMxVCD, we cannot guarantee that all functions will be available.

Windows

Compatible Operating Systems

IBM PC/AT-compatible computers (running DOS/V) with one of the following preinstalled OS: Microsoft ® Windows ® 98, Windows ® 98 Second Edition, Windows ® 2000 Professional, Windows ® Millennium Edition, Windows ® XP Home Edition, Windows ® XP Professional

Processors

Intel Pentium ® MMX ®, 200 MHz and faster (Recommended: Pentium ® III, 800 MHz and faster)

Required Software

DirectX 8.0a or later

Memory

64 MB or more (Recommended: 128 MB or more)

Hard Disk Capacity

When you create a Video CD, three times more memory is required than the size of the Video CD.

Display

A video card with 4 MB of VRAM (video memory)

Resolution of 800×600 dots or more set at High Color (16-bit color for 65,000 colors)

Direct Draw driver-compatible

Important

Normal operation is unavailable at resolutions under 800×600 dots and with less than 256 colors.

Sound

A 16-bit stereo sound card and speakers

Other Requirements

- This software uses DirectX technology. Before use, make sure that DirectX is installed on your computer.
- Creating a Video CD requires a user environment supporting a recording device and recording software as described separately.
- Installing and using this software in Windows ® 2000 Professional requires PowerUser or Administrator privileges. In Windows ® XP, it requires Administrator privileges

Macintosh

Compatible Models

PowerMacG4, PowerBookG4, PowerBookG3, iBook, iMac, and the eMac series with a PowerPCG3/400, Power PCG4/400 or later processor running MacOS9.0.4 or later. Does not run in Mac OS X or Mac OS X: Classic.

Memory

Application operating memory of 64 MB or more (recommended: 128 MB or more)

Hard Disk Capacity

When you create a Video CD image, three times more memory is required than the size of the Video CD.

Display

Resolution of 800×600 dots or more set at 32,000 colors or more

Important

Normal operation is unavailable at resolutions under 800×600 dots and with less than 256 colors.

Other Requirements

- User environment with QuickTime4 or later
- Creating a Video CD requires a user environment supporting a recording device and the CD burning application Toast by Roxio, Inc. as described separately.

Precautions

Checklist for Correct IMxVCD Operation

- Before using IMxVCD to create a Video CD, make sure that your recording drive is working normally.
- The operating environment recommended by the recording drive manufacturer is required to burn Video CDs. Be sure to follow the manufacturer's instructions and note the caution items.
- Use the CD-ROM media recommended by the manufacturer.
- Ensure that no software or drivers are installed that might interfere with Video CD creation.
- To create a Video CD, you must use one of the recording drives described separately.
- We cannot guarantee operation in Video CD creation for models not listed among the [verified recording drives](#).
- Certain models of playback devices cannot play Video CDs created by recording drives.
- For Windows users, we recommend that your hard disk be set to DMA transfer mode.
- Disk creation can be affected screen savers, system agents, and other timed software, as well as other memory-resident running during Video CD creation. Before creating your disk, exit all applications except IMxVCD.
- Ensure that you have sufficient hard disk capacity available. Extremely limited memory capacity prevents normal Video CD creation.
- Video CDs cannot be burned correctly using prerecorded CD-ROMs or disks that are damaged or dirty.



Tutorial

[Step 1: Add Your Movies](#)[Step 2: Customize the Menu](#)[Step 3: Preview the Video CD](#)[Step 4: Output](#)

Reference

[Getting Started](#)[Before Use](#)[Important Notices](#)[IMxVCD Functions](#)[User Environment](#)[Precautions](#)[Uninstallation](#)[Launching IMxVCD](#)[Exiting IMxVCD](#)[Start Screen/Elements](#)[Navigation Bar](#)[Layout environments/Elements](#)[Style Settings Panel](#)[Movie Button Settings Panel](#)[Title Settings Panel](#)[Preview and Output/Elements](#)[Preview Panel](#)[Video CD Output \(Windows\)](#)[Video CD Image Output \(Macintosh\)](#)[Preferences](#)[User Interface Notes](#)[Supported File Formats](#)[Glossary](#)[Compatible Recording Drives](#)

Uninstallation

Uninstall IMxVCD following the steps below.

Windows

1. Click [Start], go to [Settings], and select [Control Panels].
2. Double-click [Add/Remove Programs].
3. Select "ImageMixer with VCD " from the list and click the [Delete] button. A dialog box is displayed to verify deletion.
4. Click the [OK] button. The program will be uninstalled.
5. When the dialog box is displayed for completion of uninstallation, click the [Finish] button.
6. The folder [Program Files]-[Pixela]-[ImageMixer] is deleted.

Macintosh

1. Locate the file "IMx_VCDVPreferenceFolder" in the [Default Settings] folder in the [System Folder]. Drag it to the Trash.
2. Drag the [ImageMixer] folder from the hard disk to the Trash.

Tutorial

[Step 1: Add Your Movies](#)[Step 2: Customize the Menu](#)[Step 3: Preview the Video CD](#)[Step 4: Output](#)

Reference

[Getting Started](#)[Before Use](#)[Important Notices](#)[IMxVCD Functions](#)[User Environment](#)[Precautions](#)[Uninstallation](#)[Launching IMxVCD](#)[Exiting IMxVCD](#)[Start Screen/Elements](#)[Navigation Bar](#)[Layout environments/Elements](#)[Style Settings Panel](#)[Movie Button Settings Panel](#)[Title Settings Panel](#)[Preview and Output/Elements](#)[Preview Panel](#)[Video CD Output \(Windows\)](#)[Video CD Image Output \(Macintosh\)](#)[Preferences](#)[User Interface Notes](#)[Supported File Formats](#)[Glossary](#)[Compatible Recording Drives](#)

Launching IMxVCD

Follow the steps below to launch IMxVCD after installation on your computer.

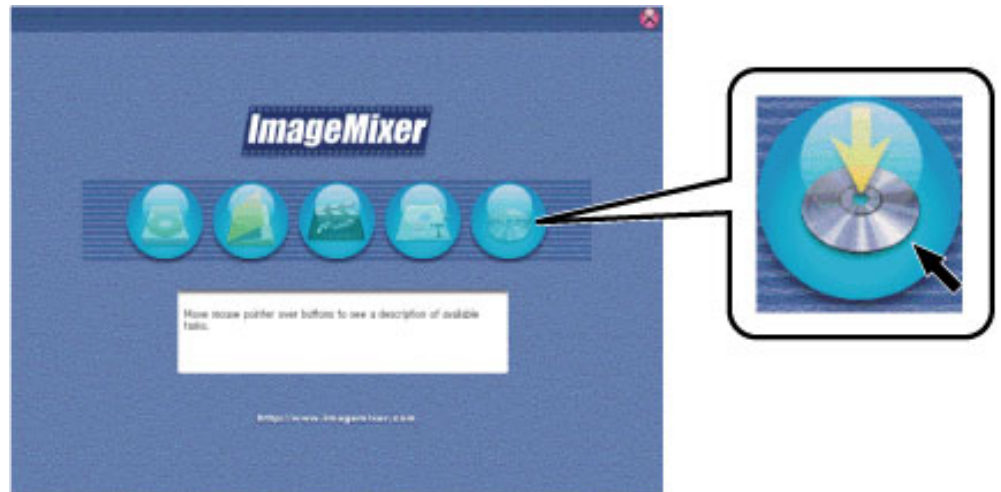
Windows

1. Click [Start], go to [Programs]-[Pixela]-[ImageMixer VCD], and select [ImageMixer with VCD] to launch ImageMixer.

Note

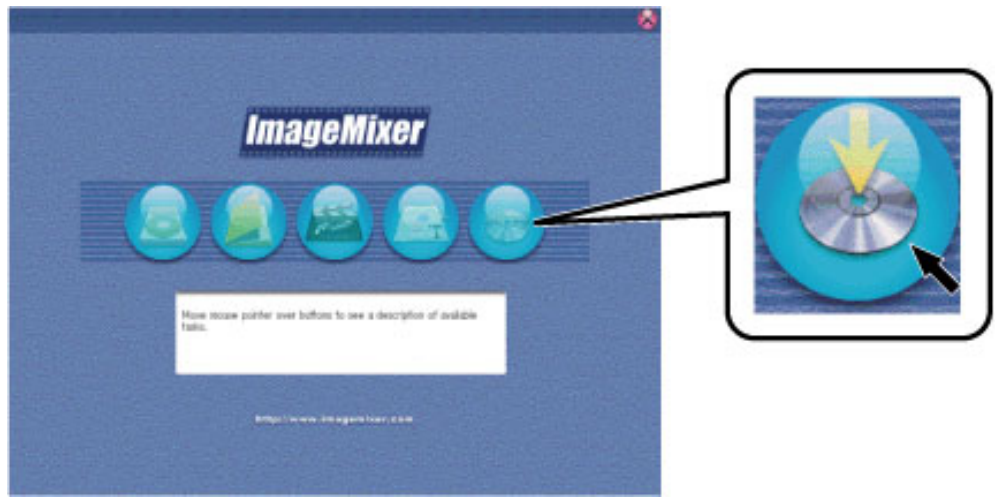
If you created a shortcut during installation, you can double-click on the [ImageMixer with VCD] shortcut icon on your desktop to launch ImageMixer.

2. When the mode selector is displayed, click the [IMxVCD] button at the far right to launch IMxVCD.



Macintosh

1. You can also launch ImageMixer by double-clicking on the [ImageMixer with VCD] icon in the [ImageMixer] folder created on your hard disk during installation.
2. When the mode selector is displayed, click the [IMxVCD] button at the far right to launch IMxVCD.



Exiting IMxVCD

To quit IMxVCD, follow the steps below.

Windows

On the Navigation Bar, ① click the [Quit] button. Or, ② in the IMxVCD application window, click the [Close] button to quit IMxVCD.



Macintosh

On the Navigation Bar, ① click the [Quit] button. Or, ② on the menu bar, click the [File] and select [Quit]. You can also quit IMxVCD by holding the [Command] key while pressing [Q] key.



Copyright © 2002, PIXELA Corp. All rights reserved.

Tutorial

[Step 1: Add Your Movies](#)[Step 2: Customize the Menu](#)[Step 3: Preview the Video CD](#)[Step 4: Output](#)

Reference

[Getting Started](#)[Before Use](#)[Important Notices](#)[IMxVCD Functions](#)[User Environment](#)[Precautions](#)[Uninstallation](#)[Launching IMxVCD](#)[Exiting IMxVCD](#)[Start Screen/Elements](#)[Navigation Bar](#)[Layout environments/Elements](#)[Style Settings Panel](#)[Movie Button Settings Panel](#)[Title Settings Panel](#)[Preview and Output/Elements](#)[Preview Panel](#)[Video CD Output \(Windows\)](#)[Video CD Image Output \(Macintosh\)](#)[Preferences](#)[User Interface Notes](#)[Supported File Formats](#)[Glossary](#)[Compatible Recording Drives](#)

Start Screen/Elements

After IMxVCD is launched, the first screen displayed is the "Start Screen". The elements of the "Start Screen" are described below.

① [Navigation Bar](#)

Remains displayed in the IMxVCD application window. Use it to switch between operating modes.

② [Video CD] button

Click this button to switch to [Video CD Output mode](#). Video CDs are created under VCD Ver2.0 standards, enabling you to use the remote control of the playback device to control playback operations.

③ [DVD Video] button

Click this button to switch to [DVD Video](#) output mode.

This function is unsupported in the current version. Please upgrade to use this function.

④ [Open Project] button

Click this button to display a dialog box for selection of a saved [project](#) file. Open projects you have saved during [authoring](#) to continue working on them. Choose from files with the extension [[*.pvd](#)].

⑤ Help window

When you move the cursor over buttons and other items, this Help window displays explanations.

Tutorial

[Step 1: Add Your Movies](#)[Step 2: Customize the Menu](#)[Step 3: Preview the Video CD](#)[Step 4: Output](#)

Reference

[Getting Started](#)[Before Use](#)[Important Notices](#)[IMxVCD Functions](#)[User Environment](#)[Precautions](#)[Uninstallation](#)[Launching IMxVCD](#)[Exiting IMxVCD](#)[Start Screen/Elements](#)[Navigation Bar](#)[Layout environments/Elements](#)[Style Settings Panel](#)[Movie Button Settings Panel](#)[Title Settings Panel](#)[Preview and Output/Elements](#)[Preview Panel](#)[Video CD Output \(Windows\)](#)[Video CD Image Output \(Macintosh\)](#)[Preferences](#)[User Interface Notes](#)[Supported File Formats](#)[Glossary](#)[Compatible Recording Drives](#)

Navigation Bar

The Navigation Bar remains displayed in the IMxVCD application window. Use it to switch between operating modes.



① [Start] button

Click this button to display the [Start Screen](#).

The Start Screen is the first screen displayed after you launch IMxVCD.

② [Layout environment] button

Click this button to display the [Layout environment screen](#).

This screen is for designing [movie buttons](#) and backgrounds displayed on the [menu screen](#) during playback of your Video CD

③ [Preview/Output] button.

Click this button to display the [Preview/Output screen](#).

Use it to check the results of your [authoring](#) or to create Video CDs or Video CD images.

④ [Help] button

Click this button display the Help file (this document).

⑤ [Preference] button

Click this button to display the [[Preference](#)] dialog box. Use it to specify your desired IMxVCD preferences.

⑥ [Save Project] button

Click this button to save your current authoring work as a [project](#) file. During authoring, you can save your work anytime as a project. The next time you open the saved project file, you can continue working on it from the state of authoring at the time of saving.

⑦ [Quit] button

Click this button to exit IMxVCD.

Tutorial

[Step 1: Add Your Movies](#)[Step 2: Customize the Menu](#)[Step 3: Preview the Video CD](#)[Step 4: Output](#)

Reference

[Getting Started](#)[Before Use](#)[Important Notices](#)[IMxVCD Functions](#)[User Environment](#)[Precautions](#)[Uninstallation](#)[Launching IMxVCD](#)[Exiting IMxVCD](#)[Start Screen/Elements](#)[Navigation Bar](#)[Layout environments/Elements](#)[Style Settings Panel](#)[Movie Button Settings Panel](#)[Title Settings Panel](#)[Preview and Output/Elements](#)[Preview Panel](#)[Video CD Output \(Windows\)](#)[Video CD Image Output \(Macintosh\)](#)[Preferences](#)[User Interface Notes](#)[Supported File Formats](#)[Glossary](#)[Compatible Recording Drives](#)

Layout environments/Elements

Use the menu layout functions to design the menu screen displayed when you play a Video CD. The elements of the "Layout environment screen" are described below.

 Reference

Refer to the [Tutorial \(Step1\)](#).



① [Navigation Bar](#)

Remains displayed in the IMxVCD application window. Use it to switch between operating modes.

② [Layout environment](#)

Add movies to the layout. The [menu screen](#) displayed when you play your Video CD will match this Layout environment screen.

③ [Movie buttons](#)

Each movie that you add will be displayed as a [movie button](#). You can change how the movie buttons are arranged by using [Apply Style Template](#). You can arrange up to 6 movie buttons on a single menu screen.

④ [Selection Numbers](#)

These numbers correspond to the selection numbers on the remote control of the playback device for the Video CD. For example, when you press [2] on the remote control, the movie of selection button [2] will be played.

⑤ [\[Previous Menu\] button](#)

Click this button to display the menu before the current menu. Only displayed when there is a previous menu screen.

⑥ [\[Next Menu\] button](#)

Click this button to display the menu after the current menu. Only displayed when there is another menu screen following the current screen.

⑦ [Add Movie] button

Click this button to display a dialog box for selection of movie files to be added as movie buttons.

 Important

You can continue adding movies until the capacity indicator bar is full. However, when the number of movies reaches 97 for a single project, no more can be added.

 Note

You can also drag and drop movies to add them to the Layout environment.

⑧ Settings panel

The Settings panel displays the settings for the [Style](#), the [movie buttons](#), and the [Title](#).

⑨ Capacity indicator

The indicator displays the total memory requirement for the movies in your [project](#) with respect to your CD-ROM media. The capacity level required increases with each movie you add.

 Important

When the bar is full, no more movies can be added.

⑩ Help window

When you move the cursor over buttons and other items, this Help window displays explanations.



Tutorial

[Step 1: Add Your Movies](#)[Step 2: Customize the Menu](#)[Step 3: Preview the Video CD](#)[Step 4: Output](#)

Reference

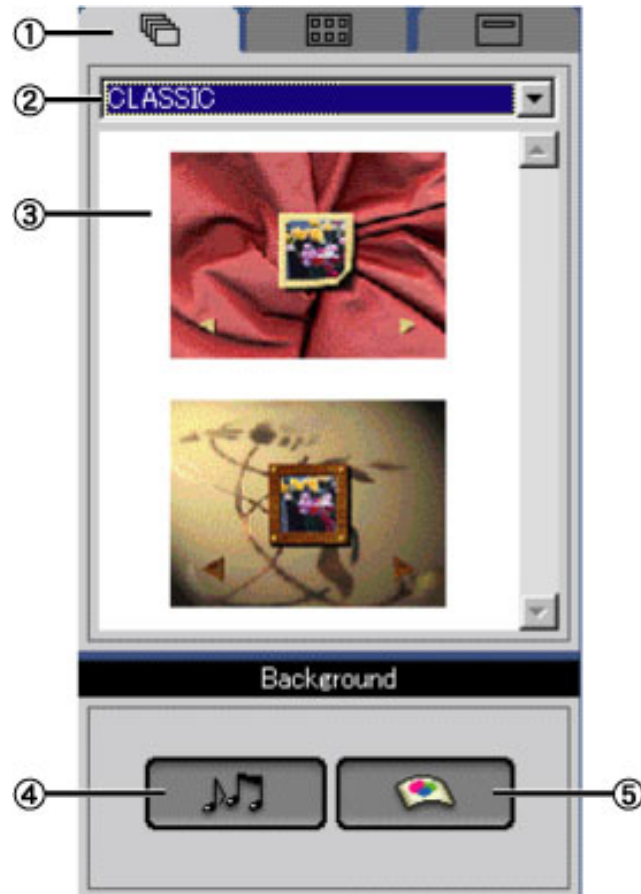
[Getting Started](#)[Before Use](#)[Important Notices](#)[IMxVCD Functions](#)[User Environment](#)[Precautions](#)[Uninstallation](#)[Launching IMxVCD](#)[Exiting IMxVCD](#)[Start Screen/Elements](#)[Navigation Bar](#)[Layout environments/Elements](#)[Style Settings Panel](#)[Movie Button Settings Panel](#)[Title Settings Panel](#)[Preview and Output/Elements](#)[Preview Panel](#)[Video CD Output \(Windows\)](#)[Video CD Image Output \(Macintosh\)](#)[Preferences](#)[User Interface Notes](#)[Supported File Formats](#)[Glossary](#)[Compatible Recording Drives](#)

Style Settings Panel

Click the [Style:] tab to display the [Style:] settings panel for selection of a style template.

 Reference

Refer to the [Tutorial \(Step 2\)](#).



① [Style:] tab

Click this button to display the [Style:] settings panel. Use the [Style:] settings panel to design menus, specify the background, and customize other style settings for the [menu screen](#).

② [Style Category] menu

Select your desired style category from this dropdown menu. You can switch between style templates by selecting them from this menu.

③ Style Templates

Displays the [Style Category] menu selection as a template. Click the template [thumbnail](#) to apply the style.

④ [Apply Sound] button

For combining audio files (such as background music) with the background image of the menu screen.

Click this button to display a dialog box for selection of audio files to apply. If audio files are already applied when you click this button, a dialog box will be displayed allowing you to remove them. By removing the audio files, you can add different ones.

You can also apply audio files by dragging the icons directly from your desktop and dropping them on the button. If audio files already exist, a dialog box is displayed allowing you to

overwrite them.

⑤ [Apply background image] button

For applying a background image to the [menu screen](#).

Click this button to display a dialog box for selection of still image files to apply. If image files are already applied when you click this button, a dialog box will be displayed allowing you to remove them. By removing the still image files, you can add different ones.

You can also apply still image files by dragging the icons directly from your desktop and dropping them on the button. If audio files already exist, a dialog box is displayed allowing you to overwrite them.



Tutorial

[Step 1: Add Your Movies](#)[Step 2: Customize the Menu](#)[Step 3: Preview the Video CD](#)[Step 4: Output](#)

Reference

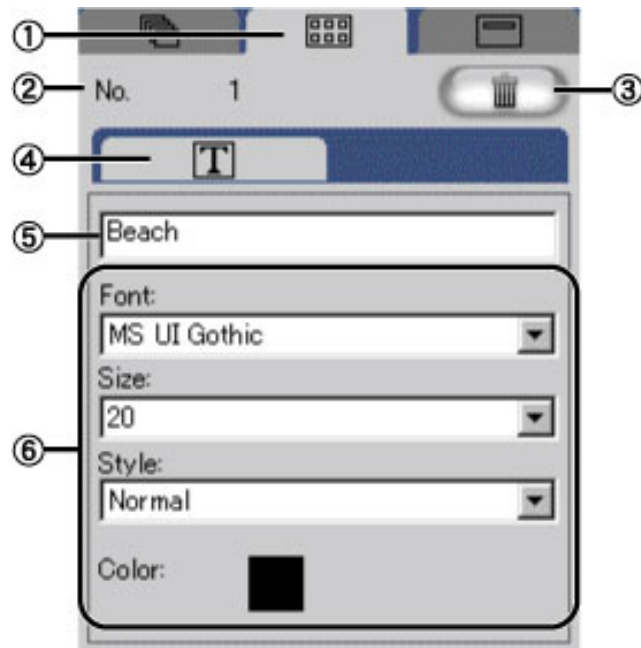
[Getting Started](#)[Before Use](#)[Important Notices](#)[IMxVCD Functions](#)[User Environment](#)[Precautions](#)[Uninstallation](#)[Launching IMxVCD](#)[Exiting IMxVCD](#)[Start Screen/Elements](#)[Navigation Bar](#)[Layout environments/Elements](#)[Style Settings Panel](#)[Movie Button Settings Panel](#)[Title Settings Panel](#)[Preview and Output/Elements](#)[Preview Panel](#)[Video CD Output \(Windows\)](#)[Video CD Image Output \(Macintosh\)](#)[Preferences](#)[User Interface Notes](#)[Supported File Formats](#)[Glossary](#)[Compatible Recording Drives](#)

Movie Button Settings Panel

"Movie buttons"s are the buttons displayed on the [menu screen](#) when you play a Video CD. The Selection Numbers of the movie buttons correspond to the buttons on the remote control of the playback device.

 Reference

Refer to the [Tutorial \(Step 2\)](#).



① [Movie Buttons] tab

Click this button to display the [Movie Buttons] settings panel.

② Selection Numbers

Indicates the Selection Number assigned to the movie button in the [Layout environment screen](#).

③ [Delete] button

Deletes movie buttons selected in the Layout environment screen. Deletion cannot be cancelled.

④ [Text] tab

Click this button to display the text settings panels for customizing movie button labels.

⑤ Movie Button Label

Normally, the file name of a movie file you add is used as its movie button label, but you can change the name by entering a new one in this text box. The source file name is not changed. You can enter up to 63 single-byte characters.

⑥ Font, Size, Style, and Color

For specifying these respective text attributes of the movie button labels.

From the dropdown menus, select your preferred font, size, and style. You can change the font color by clicking the preview box to select your desired color from the color palette.

Tutorial

[Step 1: Add Your Movies](#)[Step 2: Customize the Menu](#)[Step 3: Preview the Video CD](#)[Step 4: Output](#)

Reference

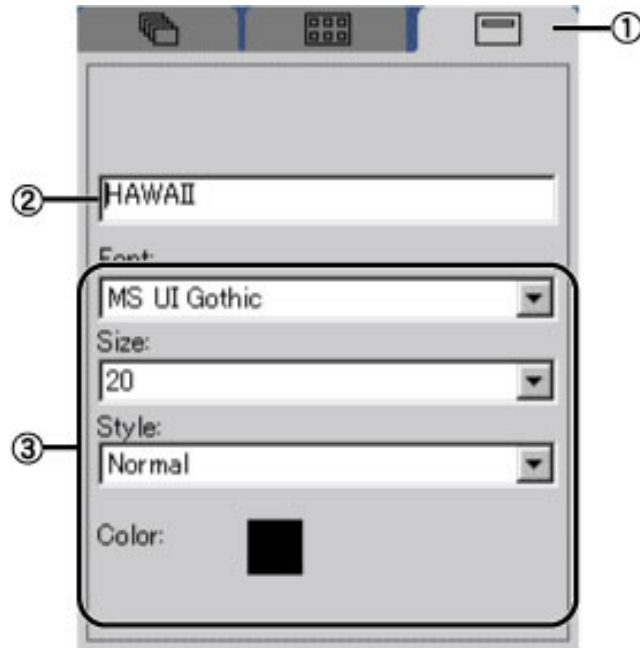
[Getting Started](#)[Before Use](#)[Important Notices](#)[IMxVCD Functions](#)[User Environment](#)[Precautions](#)[Uninstallation](#)[Launching IMxVCD](#)[Exiting IMxVCD](#)[Start Screen/Elements](#)[Navigation Bar](#)[Layout environments/Elements](#)[Style Settings Panel](#)[Movie Button Settings Panel](#)[Title Settings Panel](#)[Preview and Output/Elements](#)[Preview Panel](#)[Video CD Output \(Windows\)](#)[Video CD Image Output \(Macintosh\)](#)[Preferences](#)[User Interface Notes](#)[Supported File Formats](#)[Glossary](#)[Compatible Recording Drives](#)

Title Settings Panel

Click the [Title] tab to display the [Title] settings panel, where you can specify the title and customize the text settings for the [menu screen](#) title.

 Reference

Refer to the [Tutorial \(Step 2\)](#).



① [Title] tab

Click this button to display the [Title] settings panel.

② Title

Enter the menu screen title to be displayed when your Video CD is played. You can enter up to 63 single-byte characters.

③ Font, Size, Style, and Color

For specifying these respective text attributes of the title.

From the dropdown menus, select your preferred font, size, and style. You can change the font color by clicking the preview box to select your desired color from the color palette.

Tutorial

[Step 1: Add Your Movies](#)[Step 2: Customize the Menu](#)[Step 3: Preview the Video CD](#)[Step 4: Output](#)

Reference

[Getting Started](#)[Before Use](#)[Important Notices](#)[IMxVCD Functions](#)[User Environment](#)[Precautions](#)[Uninstallation](#)[Launching IMxVCD](#)[Exiting IMxVCD](#)[Start Screen/Elements](#)[Navigation Bar](#)[Layout environments/Elements](#)[Style Settings Panel](#)[Movie Button Settings Panel](#)[Title Settings Panel](#)[Preview and Output/Elements](#)[Preview Panel](#)[Video CD Output \(Windows\)](#)[Video CD Image Output \(Macintosh\)](#)[Preferences](#)[User Interface Notes](#)[Supported File Formats](#)[Glossary](#)[Compatible Recording Drives](#)

Preview and Output/Elements

This section explains how to preview the results of your [authoring](#) to check how it will play when recorded on your Video CD. The Video CD recording process is also described below.

① [Navigation Bar](#)

Remains displayed in the IMxVCD application window. Use it to switch between operating modes.

② [Preview window](#)

Check how the content you have prepared will play on a Video CD in this window.

③ [Selection Numbers](#)

These numbers match the control button numbers in the [Preview] panel, and they correspond to the selection numbers on the remote control for your Video CD playback device.

④ [\[Preview\] panel](#)

Displays [Control Buttons](#) for a preview simulating a remote control.

⑤ [\[Output\] button](#)

Click this button to display the [Video CD Output] dialog box. A different dialog box is displayed depending on whether you are a [Windows](#) or [Macintosh](#) user.

⑥ [Capacity indicator](#)

The indicator displays the total memory requirement for the [movies](#) in your [project](#) with respect to your CD-ROM media.

⑦ [Help window](#)

When you move the cursor over buttons and other items, this Help window displays explanations.

Tutorial

[Step 1: Add Your Movies](#)[Step 2: Customize the Menu](#)[Step 3: Preview the Video CD](#)[Step 4: Output](#)

Reference

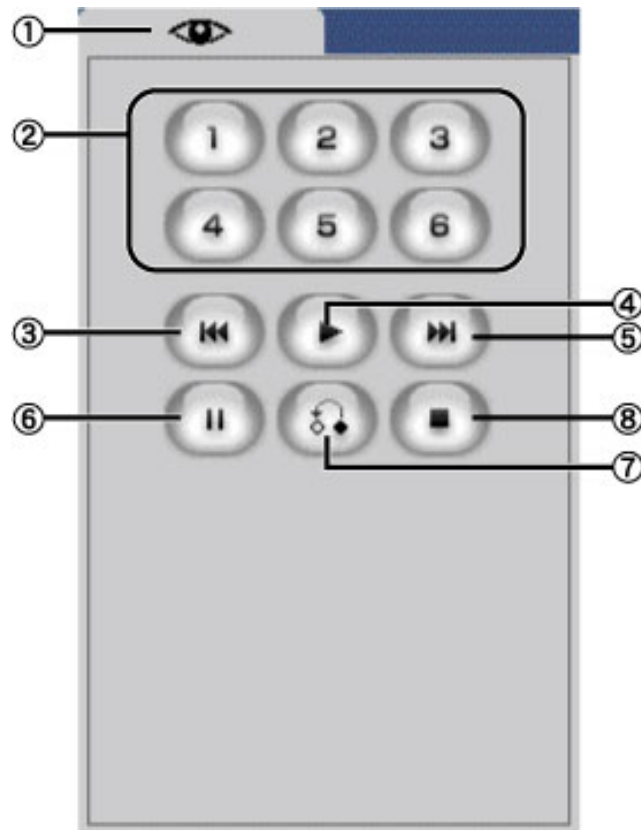
[Getting Started](#)[Before Use](#)[Important Notices](#)[IMxVCD Functions](#)[User Environment](#)[Precautions](#)[Uninstallation](#)[Launching IMxVCD](#)[Exiting IMxVCD](#)[Start Screen/Elements](#)[Navigation Bar](#)[Layout environments/Elements](#)[Style Settings Panel](#)[Movie Button Settings Panel](#)[Title Settings Panel](#)[Preview and Output/Elements](#)[Preview Panel](#)[Video CD Output \(Windows\)](#)[Video CD Image Output \(Macintosh\)](#)[Preferences](#)[User Interface Notes](#)[Supported File Formats](#)[Glossary](#)[Compatible Recording Drives](#)

Preview Panel

The [movie buttons](#) of the Video CD you have prepared have [Selection Numbers](#) that will be accessible from the remote control of the playback device. The preview is displayed by simulating the remote control operation.

 Reference

Refer to the [Tutorial \(Step 3\)](#).



① Buttons [1] to [6]

Click one of these buttons to play the movie with the corresponding [Selection Number](#). For example, clicking the [2] button in the [Preview] panel will play the movie in the position of selection number [2].

② [Previous] button

Click this button to play the previous [movie](#) or display the previous menu screen.

③ [Play] button

Click this button to restore play after pausing or stopping.

④ [Next] button

Click this button to play the next movie or display the next menu screen.

⑤ [Pause] button

Click this button to stop play momentarily.

⑥ [Return] button

Click this button to return to the menu screen with the movie button corresponding to the movie that is currently playing.

⑦ [Stop] button

Click this button to stop play.

 **Important**

These control buttons may not necessarily match the operations of the remote control for the playback device.

For example, in some cases the playback device requires you to press [1] and then [Play] for playback. Consult the manual for the playback device remote control.



Tutorial

[Step 1: Add Your Movies](#)[Step 2: Customize the Menu](#)[Step 3: Preview the Video CD](#)[Step 4: Output](#)

Reference

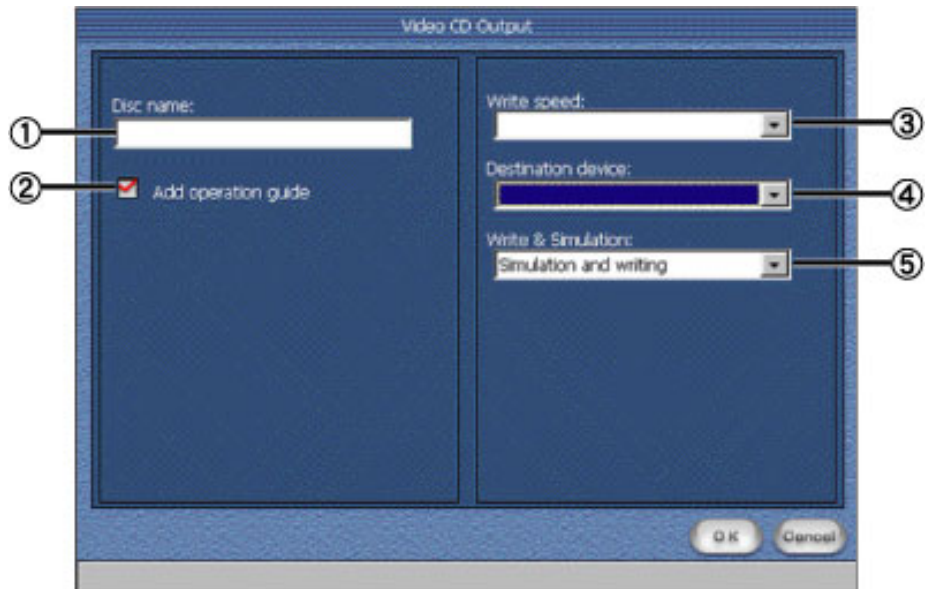
[Getting Started](#)[Before Use](#)[Important Notices](#)[IMxVCD Functions](#)[User Environment](#)[Precautions](#)[Uninstallation](#)[Launching IMxVCD](#)[Exiting IMxVCD](#)[Start Screen/Elements](#)[Navigation Bar](#)[Layout environments/Elements](#)[Style Settings Panel](#)[Movie Button Settings Panel](#)[Title Settings Panel](#)[Preview and Output/Elements](#)[Preview Panel](#)[Video CD Output \(Windows\)](#)[Video CD Image Output \(Macintosh\)](#)[Preferences](#)[User Interface Notes](#)[Supported File Formats](#)[Glossary](#)[Compatible Recording Drives](#)

Video CD Output (Windows)

On the Writing environment screen, click the [Output] button in the [Preview] panel. This section describes the [Video CD Output] dialog box that is displayed in Windows.

Important

Be sure to read the [Precautions](#).

**① Disc name**

Enter a name for the Video CD to be created. For the disk name, you can enter up to 30 single-byte letters, numbers, or the underscore symbol.

② Add operation guide

Clicking this check box will insert a IMxVCD-created screen explaining operations before the Video CD is played.

③ Speed Selection

Choose the Video CD recording speed from the dropdown menu. For example, [2x] indicates double speed and [4x] is for quad-speed.

Important

In some cases, slower recording drives such those connected through a USB interface cannot produce normal recordings at speeds set too high. Use the speed recommended by the CD-R manufacturer.

④ CD-R Drive Selection

The dropdown menu lists the drives that support CD recording. Select the preferred recording drive for recording.

⑤ Write & Simulation

From the dropdown menu, choose whether to perform a recording test before recording.

Tutorial

[Step 1: Add Your Movies](#)[Step 2: Customize the Menu](#)[Step 3: Preview the Video CD](#)[Step 4: Output](#)

Reference

[Getting Started](#)[Before Use](#)[Important Notices](#)[IMxVCD Functions](#)[User Environment](#)[Precautions](#)[Uninstallation](#)[Launching IMxVCD](#)[Exiting IMxVCD](#)[Start Screen/Elements](#)[Navigation Bar](#)[Layout environments/Elements](#)[Style Settings Panel](#)[Movie Button Settings Panel](#)[Title Settings Panel](#)[Preview and Output/Elements](#)[Preview Panel](#)[Video CD Output \(Windows\)](#)[Video CD Image Output \(Macintosh\)](#)[Preferences](#)[User Interface Notes](#)[Supported File Formats](#)[Glossary](#)[Compatible Recording Drives](#)

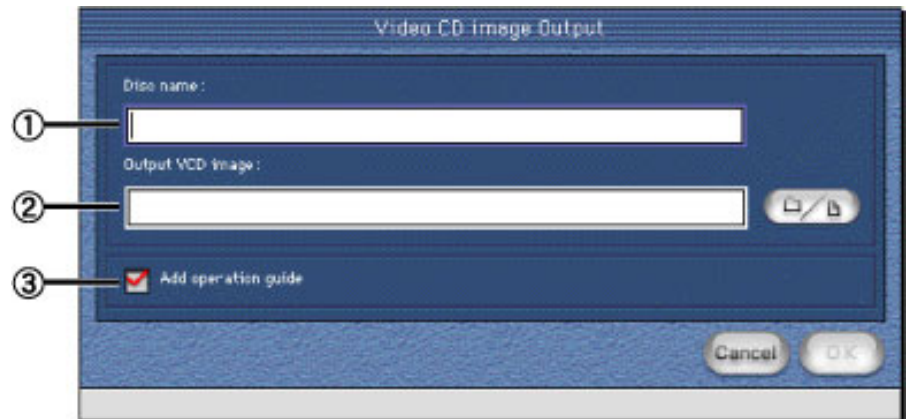
Video CD Image Output (Macintosh)

On the Writing environment screen, click the [Output] button in the [Preview] panel. This section describes the [Video CD Output] dialog box that is displayed for Macintosh users.

Important

Be sure to read the [Precautions](#).

Macintosh users cannot directly record Video CDs using IMxVCD. On a Macintosh, use IMxVCD to create a [Video CD image](#) that is compatible with the CD burning application Toast by Roxio, Inc. To use Toast for Video CD recording, refer to the separate instructions.

**① Disc name**

Enter a name for the Video CD image to be created. For the disk name, you can enter up to 30 single-byte letters, numbers, or the underscore symbol.

② Saving the Video CD Image

The Video CD will be created from the current project. Click the [Browse] button to specify a folder for saving.

Important

The Video CD image created will be saved as a file called [Cdimage] in the specified folder. If the folder contains Video CD image files with the same name, numbers will be added to distinguish new files in the order they are created, such as [Cdimage1], [Cdimage2], [Cdimage3].

③ Add operation guide

Clicking this check box will insert a IMxVCD-created screen explaining operations before the Video CD is played.

Tutorial

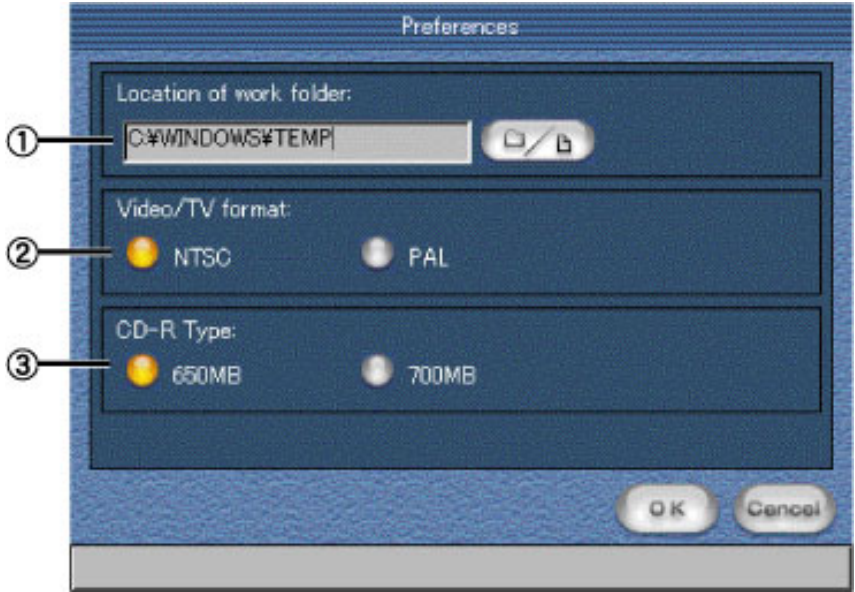
- [Step 1: Add Your Movies](#)
- [Step 2: Customize the Menu](#)
- [Step 3: Preview the Video CD](#)
- [Step 4: Output](#)

Reference

- [Getting Started](#)
- [Before Use](#)
- [Important Notices](#)
- [IMxVCD Functions](#)
- [User Environment](#)
- [Precautions](#)
- [Uninstallation](#)
- [Launching IMxVCD](#)
- [Exiting IMxVCD](#)
- [Start Screen/Elements](#)
- [Navigation Bar](#)
- [Layout environments/Elements](#)
- [Style Settings Panel](#)
- [Movie Button Settings Panel](#)
- [Title Settings Panel](#)
- [Preview and Output/Elements](#)
- [Preview Panel](#)
- [Video CD Output \(Windows\)](#)
- [Video CD Image Output \(Macintosh\)](#)
- [Preferences](#)
- [User Interface Notes](#)
- [Supported File Formats](#)
- [Glossary](#)
- [Compatible Recording Drives](#)

Preferences

Use it to specify your desired IMxVCD preferences.



① Working Folder (Windows)/Workspace (Macintosh)
Specify the folder or hard disk for your working with IMxVCD. Insufficient memory can lead to performance problems, so choose a hard disk with the greatest capacity available.

② Video/TV format
Select a format Video format for the Video CD you create.
You can choose between NTSC and PAL formats. NTSC is the format generally used for television broadcasts in the U.S., Japan, and elsewhere. NTSC images consist of 525 scanning lines, and the replay rate is 30 frames per second.
PAL is the format generally used for television broadcasts in Europe, China, and elsewhere. PAL images consist of 625 scanning lines, and the replay rate is 25 frames per second.

NTSC	Japan, United States of America, Canada, South Korea, Taiwan, Chile, Philippines, Peru, and Mexico
PAL	Argentina, United Kingdom, Italy, India, Indonesia, Australia, Austria, Netherlands, Canary Islands, North Korea, Greece, Kenya, Saudi Arabia, Singapore, Switzerland, Sweden, Spain, Thailand, Czechoslovakia, China, Denmark, Turkey, Germany, Nigeria, New Zealand, Norway, Pakistan, Finland, Brazil, Belgium, Poland, Portugal, Hong Kong, Malaysia, South Africa, and the former Yugoslavia region

③ CD-R Type
Select the disk capacity.

User Interface Notes

IMxVCD displays dialog boxes such as the one depicted below.



means [OK] or [Yes]



means [Cancel] or [No]

Supported File Formats

IMxVCD supports the following file formats.

- AVI
- QuickTime Movie (Macintosh only)
- MPEG-1 (Windows only)



Tutorial

- [Step 1: Add Your Movies](#)
- [Step 2: Customize the Menu](#)
- [Step 3: Preview the Video CD](#)
- [Step 4: Output](#)

Reference

- [Getting Started](#)
- [Before Use](#)
- [Important Notices](#)
- [IMxVCD Functions](#)
- [User Environment](#)
- [Precautions](#)
- [Uninstallation](#)
- [Launching IMxVCD](#)
- [Exiting IMxVCD](#)
- [Start Screen/Elements](#)
- [Navigation Bar](#)
- [Layout environments/Elements](#)
- [Style Settings Panel](#)
- [Movie Button Settings Panel](#)
- [Title Settings Panel](#)
- [Preview and Output/Elements](#)
- [Preview Panel](#)
- [Video CD Output \(Windows\)](#)
- [Video CD Image Output \(Macintosh\)](#)
- [Preferences](#)
- [User Interface Notes](#)
- [Supported File Formats](#)
- [Glossary](#)
- [Compatible Recording Drives](#)

↓ ← →

Glossary

DVD Video

High-quality digital recordings of video and audio on read-only media Images are generally encoded in MPEG-2 format for recording. For playback on commercial DVD players.

MPEG

MPEG, an abbreviation for Moving Picture Experts Group, is an international data compression standard for digital video and hi-fi audio. MPEG-1 is used for Video CD playback that rivals VHS tapes in quality. MPEG files are smaller than DV (digital video) files, an advantage which enables longer recordings and has made them a standard format for Internet use. MPEG-2, used for DVD and digital satellite broadcasts, offers excellent image and sound quality.

Video CD

A format combining audio and visual data for recording on a single CD-ROM format. The video data is compressed for recording using MPEG-1 encoding for a resolution of 352×240 pixels. The frame rate is 24 or 29.97 frames per second. The audio format is MPEG-1 Layer 2.

Video CDs or Video CD images created using IMxVCD offer the same playback control as DVD Video. They can be played with commercial Video CD players or Video CD-compatible DVD players.

authoring

The process of preparing a [video disk](#). Authoring involves menu creation and specifying the [content](#) and navigation settings.

content

The video files used for authoring. Sometimes referred to simply as movies.

thumbnail

A smaller version of image files that is used for templates and other purposes. Thumbnails offer an at-a-glance view to identify the files you are using.

disk image, Video CD image, Video CD image

A disk image is an image produced from various file structures. A Video CD image is an image produced from a file structures conforming to the Video CD Ver2.0 standard.

video disk

A general term for [Video CDs](#) and [DVD Videos](#) created using IMxVCD. Sometimes simply referred to as a disk.

Video/TV format

Two kinds of video format are NTSC and PAL.

NTSC is the format generally used for television broadcasts in the U.S., Japan, and elsewhere. NTSC images consist of 525 scanning lines, and the replay rate is 30 frames per second. PAL is the format generally used for television broadcasts in Europe, China, and elsewhere. PAL images consist of 625 scanning lines, and the replay rate is 25 frames per second.

NTSC	Japan, United States of America, Canada, South Korea, Taiwan, Chile, Philippines, Peru, and Mexico
------	--

PAL

Argentina, United Kingdom, Italy, India, Indonesia, Australia, Austria, Netherlands, Canary Islands, North Korea, Greece, Kenya, Saudi Arabia, Singapore, Switzerland, Sweden, Spain, Thailand, Czechoslovakia, China, Denmark, Turkey, Germany, Nigeria, New Zealand, Norway, Pakistan, Finland, Brazil, Belgium, Poland, Portugal, Hong Kong, Malaysia, South Africa, and the former Yugoslavia region

project

The work you have prepared during [authoring](#) is called a project. When you author using IMxVCD, you can save your work at any time as a project file. The next time you open the saved project file, you can continue working on it from the state of authoring at the time of saving.

Movie buttons

Buttons that are used to play video disks. You can create them by adding movies in the Layout environment screen.

In [Video CD Output mode](#), the movie buttons [Selection Numbers](#) correspond to the buttons of the remote control of the playback device. During playback of the Video CD, they can be selected with the remote control number keys to control playback .

menu, menu screen

The screen displayed during Video CD playback is called a menu or menu screen. With IMxVCD, you can customize the menu screen using the Layout environment screen. You can prepare multiple menu screens and arrange up to 6 movie buttons on a single menu screen.

Selection Numbers

The numbers indicated for the [movie buttons](#) as displayed in [Video CD Output mode](#) on the [Layout environment screen](#) or [Writing environment Screen](#). These numbers correspond to the selection number on the remote control of the playback device for the Video CD.

For example, pushing [1] on the remote control will play the movie corresponding to selection number [1] on the menu screen currently displayed. Pressing [3] on the remote control will play the movie for selection number [3].



Tutorial

[Step 1: Add Your Movies](#)
[Step 2: Customize the Menu](#)
[Step 3: Preview the Video CD](#)
[Step 4: Output](#)

Reference

[Getting Started](#)
[Before Use](#)
[Important Notices](#)
[IMxVCD Functions](#)
[User Environment](#)
[Precautions](#)
[Uninstallation](#)
[Launching IMxVCD](#)
[Exiting IMxVCD](#)
[Start Screen/Elements](#)
[Navigation Bar](#)
[Layout environments/Elements](#)
[Style Settings Panel](#)
[Movie Button Settings Panel](#)
[Title Settings Panel](#)
[Preview and Output/Elements](#)
[Preview Panel](#)
[Video CD Output \(Windows\)](#)
[Video CD Image Output \(Macintosh\)](#)
[Preferences](#)
[User Interface Notes](#)
[Supported File Formats](#)
[Glossary](#)
[Compatible Recording Drives](#)

Compatible Recording Drives

The CD-R and other disk drives listed below have been verified for use with IMxVCD. (As of Wednesday, June 5, 2002.)

We do not guarantee the performance of drives not listed here in creating Video CDs.

Furthermore, we do not guarantee all functions of these drives.

We will keep you informed of any additions in the future through updates on the Pixela website.

Manufacturer	Drive Model	Verified Firmware Version
I-O Data	CDRW-RB6424G	1.3
	CDR-TX624 series	1.0p
	CDR-TX624 series	1.0p
	CDRW-RX6424 series	1.3
	CDRW-AB84G	1.1
	CDRW-AB428	2.0D
	CDRWD-AB6424G	1.6
	CDR-AB220PD	2.0k
	CDRW-SX1210B	1.03
	CDRW-SB1210B	1.03
	CDRW-SB8220	1.1
	CDRW-SX8220 series	1.1
	CDRW-YX88	1.0a
	CDRW-YB88	1.0a
	CDRW-i64/USB/1394	1.9
	CDRW-i1210B/USB/1394	-
	CDRW-i1610B/USB/1394	-
	CDRWD-i1210J/USB	1.3
	CRWDP-i8A/US2	1.07
	CDRW-iE24J	1.23
	CRWP-i24B/US2	8.41
	CDRWD-AB1210J	1
	CDRWD-RX1210J	1.2
	CDRW-SX124G	1.28
	CDRW-SB124G	1.28
	CDRW-SX124BG	2.21
	CDRW-SB124BG	2.21
	CDRW-AB124B	3.27
	CDRW-AB1210B	-
	CDRW-AB1610B	-
	CDRW-SX1610B	-
	CDRW-SB1610B	-
	CRWD-AB20J	1.2
CDRW-SX24B	-	
CDRW-SB24B	-	
CDRW-AB24J	1.3	
CDRW-AB24B	6.32	
CDRW-AB32B	-	
DVDRW-AB4.7P	1.29	
DVDRR-AB4.7	A078	
ADTEC	AD-RW446U/PW1	1.05
	AD-RW446U/PW2	1.1B
	AD-RW6416/V	1.0b
	AD-RW820/V	1.05
	AD-RW1610UF/PWG	-
	AD-RW2410B	6.32
iiyama	AVENUE MPX-710	100E
AOpen	CRW1232	1.22
	CRW1232A	1.01
	CRW1232PRO	1.2
	CRW1632	-
	CRW2040	-
	CRW2440	-
ST_Trade_Corporation	DVR-103	1.44
	DCR-111R	1.26
	DVRW-AT4	1.2

NEC	NEC ODX658	1.02
	NR-7500A	1.06
	NR-7700A	1.01
	NR-7800A	1.26
	NR-7900A	1.23
	NR-7800B	1
	NR-8400A	1.21
	NR-8500A	1.5
	CB-2100A	1.03
NEC_VALUESTAR	VT900/1D	1.04
	VT950/1D	1.04
	VT970/1D	1.04
	VT100/1A	1.04
LG	CED-8041B	1.01
	CED-8042B	1.05
Caravelle	RW-4416 series	1.0f
	RW-6424DA/K	1.6
	RW-8424S series	1.0j
CREATIVE	CD-RW121032	LC56
	RW1210E	LC56
CyQ've	CRW-DVD	1.6
SAMSUNG	SW204	BS14
	SW408B	bd19
	SM304B	-
	SM308B	T100
	SM-408B	T200
GENERIC	CRD-RW1	1.1
	CRD-RW2	1.28
	CRD-BP2	2.21
	CRD-BP3	1.03
	CRD-BP4	-
	CRD-BP5	-
	CRD-BP900P	3.27
	CRD-BP1300P	-
	CRD-BP1400P	-
	CRD-BP1500P	6.32
	CRD-BP1600P	-
CRD-BP1700P	1.01	
Sony	CDU928E	1.1n
	CRX50A	1.0e
	CRX55A	1.0a
	CRX75A	2.0a
	CRX75U	2.0a
	CRX76A	2.0a
	CRX76U	2.0a
	CRX10U	2.0b
	CRX100E	1.0j
	CRX120E	1.0j
	CRX140E	1.0p
	CRX160E	1.1a
	CRX175E	1.0g
	CRX500E	1.0a
	CRX700E	2.0a
	CRX800E	1.0a
	CRX1600S	1.0a
Century	CEN658KIT	1.02
	CEN-CDR820A-EXT/AT	1.05
WPI	CDRW-8432i	E10k
TDK	ICD4012A	1t01
	PCD8824U2	N1B1

Teac	MC-R5220EK CD-R6240S series CD-R624SK series CD-R56S CD-R58S CD-W4432EKB CD-W24E CD-W28E CD-RW280PU CD-W216E CD-W54E CD-W58E CD-W512SB CD-W512E CD-RW512EKB CD-W512EB CD-W516EB CD-W524EB CD-W540E CD-RW540EKB DW-28E	2.0k 1.0p 1.0p 1.0p 1.0f 1.1B 1.0A - - 1.0A 1.1B 1.0A 1.0A 1.0E 2.0B 2.0B 1.0B - - - 1.0A
Toshiba	SD-R1002 SD-R1102 SD-R1202 SD-R2002 SD-R2102 SD-R2212 SR-C8002 SR-C8102	1034 1012 1023 1Q24 1008 1011 1008 -
TORiSAN	CDW-U4424	200A
NOVAC	NV-CR330P NV-DW340	1 1
Pioneer	DVR-103 DVR-A03-J DVR-A04-J DCR-111	1.44 1.44 1.2 1.26
Hagiwara	HBC-CRW8432A HBC-CRW4XU HBC-CRW8XUG HBC-CRW448UG HBC-RWD4424A	1.04 1.04 2.0B 1.1B 1034
Panasonic	CW-7503 CW-7582 CW-7585 CW-7586B CW-8121 CW-8571 LK-RW7585T series LK-RW7585UZ LK-RC8571TZ LK-RC8571UZ LK-RV8185AZ KXL-RW20AN KXL-RW21AN KXL-RW30AN KXL-CB10AN KXL-RW10AN-S UJDA310 UJDA320 UJDA330 UJDA330A UJDA340 UJDA710 UJDA720 UJDD410 LF-D321JD LF-D340JD	1.05 1.05 1.04 1.04 - - 1.04 1.08 1J39 1J44 BH43 1.23 1.02 1.02 K001 - 1.1 1.23 1S20 1Z32 - 1.1 - 1 A078 A078

PHILIPS	CDD4201	Z023
	CDD4401	1.21
	CCD4801	1.1
	428CDRW	2.0D
	4424CDRW	-
	8432CDRW	1.2A
	241240CDRW	1.0c
	321240CDRW	-
	PH162180AEP	-
	PH1621809EP	1.0c
	Pixela	PIX-DVRR/FW1
PIX-DVRR/AT1		A078
Hitachi LG Data Storage	GCE-8160B	1.2
	GCC-4120B	1.04
	GCC-4080N	-
Plextor	PX-W4220T series	1.04
	PX-W124TS	1.07
	PX-W412C	1.04
	PX-W8220T	1.05
	PX-W8432T	1.09
	PX-W1210TA/BS	2.0B
	PX-W1210TS	1.03
	PX-W1610TA/BS	1
	PX-S88T	-
	PX-S88TU	1.02
	PX-W2410TA/BS	1.02
	PX-W2410TU/BS	-
	PX-W4012TA/BS	1
	PX-320A/BS	-
BENQ	CRW3210P	B.KW
	CRW4012P	V.MW
Mitsubishi	MK4416Y	1.0f
	MK426Y	1.0g
	MKRW124S	1.28
	MKRWT4BP	2.21
Mitsumi	CR-4804TE	2.6c
	CR-48x5TE	1.8A
	CR-4808TE	1.1A
	CR-48x9TE	1.0c
	CR-48xATE	-
MIRAI_TECHNOLOGY	SDR-1500-M	6.32
Melco	CDS-28N	1.1n
	CDRW-S4220 series	1.04
	CDRW-S4224W series	2.03
	CDRW-S8220 series	1.05
	CDRW-I8432FB	1.07
	CDRW-IL8432	1.09
	CDRW-S4432	2.23
	CDRW-I4224FB	1.0j
	CDRW-I4432FB	1.1
	CDRW-446USB	1.3B
	CDRW-S8432 series	2.3
	CDRW-S124	1.07
	CDRW-S124FB	1.07
	CDRW-B88USB	2.0B
	CRWU-PB88	-
	CRWI-B1210FB	1.07
	CRWS-SB1210	3
	CRWU-B1210	1.01
	CRWiF-B1210	1.07
	CRWU2-B1210	1.22
	CRWS-SB1610	3.1
	CRWI-B1610FB	-
	CRWU2-B1610	1
	CRWiU-B1610H	1.02
	CRWSU-B1610H	-
	CDRW-1210USB	2.0G
	CRWI-J1210FB	1.22
	CDRW-J1210USB	1.2
	CDRW-J1610SU	OS0B
	CDRW-J1610IU	OS0B
	CDRW-J1610U2	OS0B
	CDRW-J2410IU	1.0g
	CDRW-J2410U2	1.0g

	DVRAM-FB CRW-16FB CRW-24FB CRW-24IU CRW-24SU CRW-24U2 CRW-32FB CRW-32IU CRW-32U2 CRW-S32FB CRW-40FB CRWD-20U2 CRWD-16FB	A078 1.2 1.0g 1.0g 1.0g 1.0g - - - - 1.01 - 3p34
Yamaha	CDR200 series CDR400 series CDR401 CRW2216E CRW4260 CRW4416S series CRW4416E CRW6416S series CRW8424S series CRW8424E CRW8824E CRW8824S series CRW2100E-VK CRW2100IX-VK CRW2200E CRW2200UX-VK CRW3200E-VK CRW3200UX-VK CRW3200SX	1.0n 1.0g 1.0h 1.0h 1.0q 1.0f 1.0b 1.0b 1.0j 1.0e 1.0a 1.0a 1.0H 1.0N 1.0B 1.0E 1 1 1
LITE-ON	LTR-12101B LTR-16102B	LS22 OS0B
RADIUS	FWS05020 Slim Line CDRW 4x4x24	1.15
Ricoh	MP7040A series MP7060A series MP7060S series MP7063A MP7080A MP7083A MP7120A MP7125A MP7163A MP7200A MP7320A MP9060A MP9120A MP9200A MP5120A MP5125A	1.3 1.8 1.3 1.9 1.1 - 1.1 1.1 B006 - - 1.6 1.2 1.2 1.29 -
Logitech	LCW-RW8416 series LCW-RW9820 series LCW-RW3624/P/PC LCW-RW8616 series LCW-RW8824 series LCW-5820 series LCW-RD648 series LCW-RW3624AK LCW-S4424AK LCW-R6424DV series LCW-Z4408/U LCW-R6406U LCW-S4406U LCW-Y8824 series LCW-R8432F LCW-R6432 LCW-P1210BF LCW-R1210S LCW-R1210AK LCW-R1210F LCW-R1210DV LCW-R1210DVAK LCW-T1210BSU	1.0f 1.05 1.3 1.0b 1.0j 1.05 2.0k 1.3 1.0j 1.6 2642 1.9 1.0j 1.0a 1.1 1.9 2.0B 1.1 1.1 1.1 1.2 1.2 2.0E

LCW-T1210BU	2.0E
LCW-T1210BAK	2.0B
LCW-E1210BU	1.01
LCW-E1210BSU	1.01
LCW-E1210BAK	1.01
LCW-E24U2	1.23
LCW-E24SU2	1.23
LCW-E24FU2	1.23
LCW-Y1610AK	1.0F
LCW-Y1610F	1.0G
LCW-PN8424SU	1
LCW-T1610BSU	1.0B
LCW-T1610BAK	-
LCW-T1610BFU	1.0A
LCW-PT8824BU	-
LCW-R2010BAK	-
LCW-Y2010BSU	1.0B
LCW-Y2010BFU	1.0c
LCW-G2410BAK	6.32
LCW-G2410BFU	6.32
LCW-G2410BSU	6.32
LCW-R2010DVAK	1
LCW-R2010DVSU	1
LCW-R2010DVFU	1.1
LCW-WINU	1.9
LCW-PTU2	-
LCW-PEDVU2	1.07
LCW-S24U2	1.0g
LCW-S24SU2	1.0g
LCW-S24FU2	1.0g
LCW-S24AK	1.0g
LCW-R20U2	1.3
LCW-R20FU2	1.3
LCW-R32AK	-
LCW-R32U2	-
LCW-R32SU2	-
LCW-R32FU2	-
LCW-T40AK	-
LCW-T40U2	-
LCW-T40FU2	-
LDR-214AK	1.44
LDR-214F	1.44
LDR-216AK	1.2
LDR-216FU2	1.2
LDR-N106AK	1.29
LDR-N106FU2	1.29
LDR-258AK	1.06
LDR-258FU2	1.06

