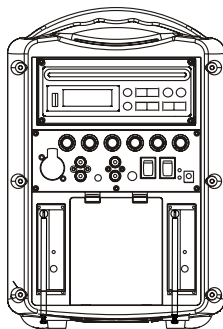
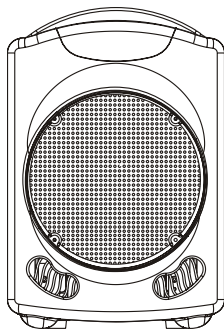




PA419

Wireless Portable PA System

Made for
 iPod  iPhone



User Manual

Table of Contents

1. IMPORTANT SAFETY INSTRUCTIONS	2
2. PACKAGE CONTENTS	4
3. PART NAMES AND FUNCTIONS	4
4. KEY FUNCTIONS	7
5. SETUP AND INSTALLATION	8
4.1 GENERAL	8
4.2 BATTERY	8
6. BASIC OPERATION	9
6.1 REMOTE CONTROL	9
6.2 CONTROL PANEL	9
6.3 DVD/CD/MEDIA PLAYER	10
6.4 IPOD DOCK	11
6.5 UHF RECEIVER	11
7. TROUBLESHOOTING	12
8. SPECIFICATIONS & FEATURES	13
9. WARRANTY	14



PA419 Wireless Portable PA System

Thank you for purchasing the Califone® PA419 Wireless Portable PA System.

We encourage you to visit our website www.califone.com to register your product for its warranty coverage, to sign up to receive our newsletter, download our catalog, and learn more about the complete line of Califone® audio visual products, including portable and installed wireless PA systems, multimedia players and recorders, headphones and headsets, computer peripheral equipment, visual presentation products and language learning materials.



" Made for iPod ", " Made for iPhone ", mean that an electronic accessory has been designed to connect specifically to iPod, iPhone, respectively, and has been certified by the developer to meet Apple performance standards. Apple is not responsible for the operation of this device or its compliance with safety and regulatory standards. Please note that the use of this accessory with iPhone may affect wireless performance.

1. IMPORTANT SAFETY INSTRUCTIONS

Before using this product, read the instruction manual for important safety information. Please retain this manual for future reference and warranty information.

Troubleshooting & Servicing

Do not attempt to service or repair the device yourself. Refer all servicing to qualified service personnel. Do not attempt to modify the device in any way. Doing so could invalidate your warranty.

Moisture and heat sources

Do not use this apparatus near water (for example, sinks, baths, pools) or expose it to rain, moisture, dripping or splashing liquids. Do not expose the unit to high temperatures, high humidity or direct sunlight.

Cleaning

When cleaning the device, please use a soft, dry cloth. Never use benzene, paint-thinner, or other chemicals on the device.

Location

Place the device in stable location, so it will not fall causing damage to the device or bodily harm.

Intended use

The product may only be used with the original parts intended for it. The product may only be used in closed and dry rooms. The intended use includes adherence to the specified installation instructions. The manufacturer accepts no liability for damage arising due to improper use.

WARNING: Changes or modifications to this unit not expressly approved by the party responsible for compliance could void the user's authority to operate the equipment.

IMPORTANT

This device complies with Part 15 of the FCC Rules. Operation is subject to the following two conditions:

(1) This device may not cause harmful interference, and (2) this device must accept any interference received, including interference that may cause undesired operation.

The unit's circuitry may cause interference to nearby radios. To prevent interference, either switch the unit off or move away from the affected radio.


NOTE: This equipment has been tested and found to comply within the limits for a class B digital device, pursuant to Part 15 of the FCC Rules. These limits are designed to provide reasonable protection against harmful interference in a residential installation. This equipment generates, uses and can radiate radio frequency energy and, if not installed and used in accordance with the instructions, may cause harmful interference to radio communications. However, there is no guarantee that interference will not occur in a particular installation. If this equipment does cause harmful interference to radio or television reception, which can be determined by turning the equipment off and on, the user is encouraged to try to correct the interference by one or more of the following measures:

- Reorient or relocate the receiving antenna.
- Increase the separation between the equipment and receiver.
- Connect the equipment into an outlet on a circuit different from that to which the receiver is connected.
- Consult the dealer or an experienced radio / TV technician for help.

NOTE: Shielded cables may be required to be used with this unit to ensure compliance with the Class B FCC limits.

SAFETY CERTIFICATION

This Compact Disc Player is made and tested to meet safety standards of the FCC, requirements and compliance with safety performance of the U.S. Department of Health and Human Services, and also with FDA Radiation Performance Standards 21 CFR Subchapter J.

	LASER SAFETY This unit employs an optical laser beam system in the CD mechanism, designed with built-in safeguards. Do not attempt to disassemble; refer to qualified service personnel. Exposure to this invisible laser light beam may be harmful to the human eye.
INVISIBLE LASER RADIATION WHEN OPEN AND INTERLOCK FAILED OR DEFEATED. AVOID DIRECT EXPOSURE TO LASER BEAM.	THIS IS A CLASS-1 LASER PRODUCT. USE OF CONTROLS, OR ADJUSTMENTS OR PROCEDURES OTHER THAN THOSE SPECIFIED HEREIN, MAY RESULT IN HAZARDOUS LASER LIGHT BEAM EXPOSURE.

2. PACKAGE CONTENTS

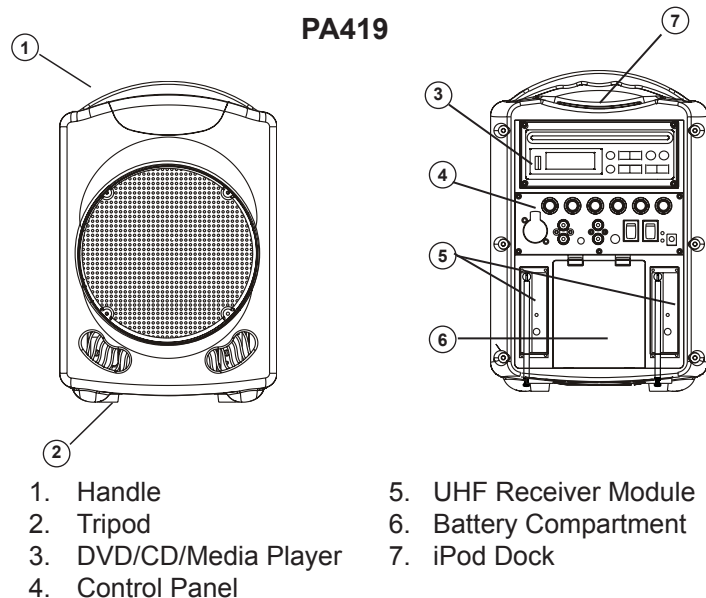
The following materials are included.

- PA419 Wireless Portable PA Speaker
- Power Adapter
- AC Power Cord
- Remote Control
- User Manual

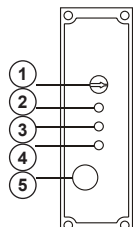
Unpacking the Unit

Inspect the unit once the packaging has been opened for any damage that occurred during shipping and contact us immediately. Please keep the packing material for further use.

3. PART NAMES AND FUNCTIONS



UHF Receiver

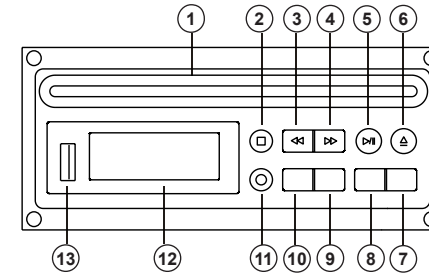


1. Channel Selector
2. Audio Signal LED Indicator
3. RF LED Indicator
4. Power LED Indicator
5. Power Switch & Volume Control

califone.com

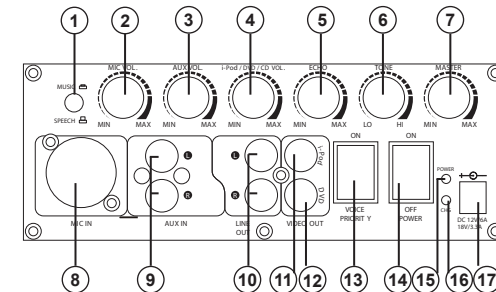
4

DVD/CD/Media Player



1. Disc Slot
2. Stop
3. Back
4. Forward
5. Play/Pause
6. Eject
7. Disc Select
8. USB Select
9. File Forward
10. File Back
11. Remote Infrared Sensor
12. LCD Display
13. USB Port

Control Panel



1. Music/Speech Button
2. Microphone Volume
3. Auxiliary Volume
4. MP3 / Disc Volume
5. Echo Control
6. Tone Control
7. Master Volume Control
8. Microphone Input Jack
9. Auxiliary Input Jack, L & R
10. Audio Line Out, L & R
11. iPod Video Out
12. DVD Video Out Jack
13. Voice Priority Switch
14. Power Switch
15. Power LED Indicator
16. Battery LED Indicator
17. DC Power Input Jack

califone.com

5

Remote Control



NOTES:

- USB / DISC = Switch between USB and DVD/CD Playback.
- PT+ = Pitch Up
- PT- = Pitch Down
- OSD = On Screen Display
- Top section of remote controls DVD/CD/USB Player.
- Bottom section of remote controls iPod / iPhone.

4. KEY FUNCTIONS

Note: Some of the following buttons are on the remote control, and some are only on the main unit. The button may function differently on the main unit or remote control. Many of these functions are only applicable when the PA419 is connected to a display screen.

POWER ON/OFF

Press this to turn the PA419 on and off.

EJECT

Removes the CD or DVD from the PA419 disc slot.

SUBTITLE

Press this key to switch between any available subtitles on the DVD when connected to a display screen.

SETUP

Press this key to setup the system when connected to a display screen.

MENU

Press this key to return to the DVD menu when connected to a display screen.

PLAY/PAUSE

Press this key to begin playback or to resume normal playback from pause, fast forward, or fast reverse states. Press this key again to pause playback, and then press this key to resume normal playback.

ZOOM

Press this key to zoom. Six different levels of zoom are available.

REPEAT

Press this key to change the repeat mode.

PROGRAM

Press this key to program specific song/chapters to play when connected to a display screen. For track numbers above 10, press 10+ and then the additional digit. For instance, for track number 15, press 10+ then 5. For track number 37, press 10+ three times, then press 7. Note that inputted track numbers may not exceed the number of tracks available. Up to twenty tracks may be programmed.

OSD

Press to display track information when connected to a display screen.

FAST REVERSE

Press this key for fast backward search. You can select the speed of 2X, 4X, 8X, 20X.

FAST FORWARD

Press this key for fast forward search. You can select the speed of 2X, 4X, 8X, 20X.

SKIP BACKWARD

Press this key to skip to the previous chapter or song.

SKIP FORWARD

Press this key to skip to the next chapter or next song.

MUTE

Press this key to mute the audio. Press again to unmute the audio.

PITCH ADJUSTMENT

Press the Pitch + or Pitch - on the remote control to adjust the pitch setting.

5. SETUP AND INSTALLATION

5.1 AC Operation

1. Turn all of the volume controls to their minimum setting.
2. Insert the DC plug, at the end of the AC adapter cord into the DC input jack.
3. Plug the AC adapter into AC power outlet socket. Use only with the included power adapter and make sure the local voltage corresponds on the adapter's required AC input voltage.
4. Turn on the power switch.

NOTE: If the AC plug of this unit does not fit in your AC outlet, a plug adapter (not supplied) should be used.

5.2 Battery Operation

1. To enable battery operation, first ensure that the internal battery is fully charged. To do this, follow the instructions above for AC Operation and let the battery recharge for at least 7 hours.
2. When the battery is charging, the CHG LED will light red. It will turn green when the battery is fully charged.

6. BASIC OPERATION

6.1 Remote Control

Before the first use, open the battery cover, located on the back of the remote control. Remove the protective plastic film. The remote is now ready for use.

- The remote control may be used to operate the PA419 within 13 feet (4 meters) from the front or rear of speaker, within a 45 degree angle.
- The remote control battery should last for about a year. When the remote ceases to work, it may be time to change the battery. Open the remote control battery cover and replace the old battery with a new CR2025.

6.2 Control Panel

Microphone Input (MIC IN)

Connect a microphone to the microphone input jack. The Microphone Volume is used to control the level of the input signal.

Music/Speech

Press this button to change the microphone input setting. When button is up, it is set to speech and should be used when a microphone is connected to the input. When connecting a sound source (such as an external media player, the button should be set in the down position to enable full bandwidth music playback.

Line In (AUX IN)

Connect to the aux input jacks using RCA or 3.5mm plugs. The Aux Volume is used to control the level of the input signal.

Line Out (LINE OUT, VIDEO OUT)

RCA jacks are used to connect to the input of another piece of equipment such as a stereo, mixer or another amplified speaker. The line outputs are independent of the Master Volume control.

Voice Priority

This feature is used for voice override of the music program when using any microphone. The "ducking" circuit attenuates the music when a person speaks into the microphone. After a 3 second delay in the speech, the music returns to the previous level. Note: This function does not affect the iPod/iPhone audio output.

6.3 DVD/CD/Media Player

NOTE: When turned fully counter-clockwise until it clicks, the MP3 / Disc Volume control also turns off the power to the DVD/CD/Media Player. To turn the power on, turn the knob above the minimum setting.

CD Player

1. Insert a standard CD into the slot. When the CD player is on without a disc inside, the LCD display will show "LOAD." Once a CD is inserted into the slot, the LCD display will show "READING DISC."
2. Press the Play button to start playing the audio track. Press it again to pause playing. Press Stop to stop playing; it will resume play at the place it has been stopped. Press Stop again to revert to the beginning of the CD.
3. Press the Eject button to remove the CD from the slot. If the CD is not removed, the CD will be pulled in automatically after 30 seconds.
4. Press the Fast Forward and Fast Reverse buttons to choose the desired track. To fast forward or rewind through a song, press these buttons continuously and press Stop at the desired point.
5. To set the Audio, connect the PA419 to a display screen and press the Audio button on the remote control. The audio may be set to Mono left, right, mix mono, or stereo.

DVD Player

1. Connect the Video Output (RCA) to the Video input of the TV or monitor.
2. Power on both units. Insert a standard DVD into the PA419 slot.
3. Once the DVD is read, the menu screen will appear on the display screen.
4. Press the Play button to start the DVD, or navigate through the menu screen using the arrow buttons.
5. If desired, for additional volume, connect the Audio Outputs using RCA cables to the audio input of the TV or additional PA / sound system.

Setup

When pressing the SETUP button on the remote control, a menu appears on the TV screen: System Setup, Language Setup, Audio Setup, and Video Setup.

- **SYSTEM SETUP:** The System Setup screen allows the TV System (NTSC/PAL), Screen Saver, Video (S-Video), TV Type (screen ratio), Password, and Rating Level to be set. Also, this menu allows resetting the DVD Player to factory default settings.

- **LANGUAGE SETUP:** The Language Setup screen allows the OSD Language to be customized.
- **AUDIO SETUP:** The Audio Setup screen allows the EQ and Stereo/Mono setting to be customized.
- **VIDEO SETUP:** The Video Setup screen allows customization of the Sharpness, Brightness, Contrast, Hue, and Saturation.
- To exit the Setup menu, press the SETUP button again.

USB Media Player

1. Connect the PA419 Video Output to a display screen.
2. Place the USB key into the USB slot. Press the USB / DISC button on the remote control or front panel to enter USB mode.
3. Press the Program button on the remote control to view all files.
4. Scroll through the different media types and then using the arrow buttons, scroll through the different files and press the Enter button to select a file.
5. Press File Forward to navigate to the next file, and then use Skip Forward to select the track to play.

6.4 iPod/iPhone Dock

1. Connect the iPod/iPhone to the dock located on the top of the PA419.
2. Operate the iPod/iPhone using the buttons on the bottom section of the remote control or the dock to play audio or video files.
3. Adjust the volume using the Vol+/- buttons on the remote control or the buttons on the iPod/iPhone dock.

6.5 UHF Receiver

1. Set the PA419 UHF Receiver to same frequency as the transmitting microphone by turning the UHF Receiver knob to the desired frequency.
2. The Power LED will light up red when the UHF Receiver is turned on.
3. When a transmitter is connected, the RF A/B LED will light green.
4. The AF LED will turn green when sound is being transmitted through the microphone to the PA419.
5. Slowly increase the volume to the desired level. Note that the master volume of the PA419 may also need to be adjusted.

8. TROUBLESHOOTING

Issue	Resolution
No Sound.	Check that the master volume is turned up as well as the volume control for the appropriate input and/or device.
The DVD/CD/Media Player does not power on.	On the Control Panel, rotate the Master volume knob clockwise.
The volume will not change.	Check each control knob and turn to desired position.
The unit does not power on.	The unit may not be charged. Plug the power supply in.

9. SPECIFICATIONS & FEATURES

General

Functions	Amplifier, iPod Dock, DVD/CD/Media Player, 2 16-channel UHF receivers, XLR/1/4" Mic Input, RCA Aux Input, 3.5mm Aux Input, RCA Line Output, Composite RCA Video Outputs for iPod and DVD Player, Standard 1-3/8" tripod mounting hole on bottom
File/Disc Compatibility	CD, CD-R, CD-RW, DVD, DVD-R, DVD-RW, CD+G, AVI, MPEG1, MPEG2, MPEG4, MP3, JPEG
Remote Control Battery	CR2025
Product Dimensions	8.75 (w) x 8.75 (l) x 12.75 (h) inches (22.2 (w) x 22.2 (l) x 32.4 (h) centimeters)
Product Weight (incl. accessories)	14.6 lbs (6.6 kg)

Main System

Power Adapter	100-240V~50-60Hz switching-type with DC 18V/3.33A output
Working Voltage	12-18 V (DC)
Max Working Current	5 A
Battery Recharge Time	< 10 hours
Battery Usage Time	> 2 hours (Max Power) **Note: Usage time will depend on program material and battery age. If playing "loud" types of music (pop/rock) at maximum volume, usage time may be less (e.g. 1.5 hours).
Sensitivity (MIC)	7.4 mV
Sensitivity (AUX)	190 mV
Power Output	30 W (RMS)
Speaker	6.5 inch, 4 ohm, full-range
Battery Capacity	6 AH

Receiver

Receiver Frequency	902-928 MHz
Channels	16
Receiver Sensitivity	-95 dBm
Receiver Type	FM

Made for :			
iPod	• iPod touch (1st, 2nd, 3rd and 4th generation)	iPhone	• iPhone 4
	• iPod classic		• iPhone 3GS
	• iPod with video		• iPhone 3G
	• iPod nano (1st, 2nd, 3rd, 4th, 5th and 6th generation)		• iPhone
	• iPod with color display		
	• iPod mini		
	• iPod with dock connector		
	• iPod with ClickWheel		

iPhone, iPod, iPod classic, iPod nano, and iPod touch are trademarks of Apple Inc., registered in the U.S and other Countries.

10. WARRANTY

Califone warrants this product to be free from defective material and workmanship for one year from the purchase date. Our “Project Intercept” Customer Satisfaction program will replace defective parts and repair malfunctioning equipment under this warranty when the defect occurs under normal use.

All Damage Claims Must Be Made With the Freight Carrier

Notify the freight carrier immediately if you observe any damage to the shipping carton or product. Repack the unit in the carton and await inspection by the carrier's claim agent. Notify your dealer of the pending freight claim.

Returning Your Unit for Service or Repairs

Should your unit require service, contact our Customer Service Department online at califone.com/techsupport or via email warranty@califone.com or by phone at 800-722-0500 / 818-407-2400 to first obtain an RA (Return Authorization) number before returning it to Califone. The unit must be returned to our factory via prepaid transportation only after the factory issues an RA number, which must be clearly written on the outside of the box.

Califone® International, Inc.
1145 Arroyo Avenue, #A
San Fernando, CA 91340 USA
Toll Free 800.722.0500 | Toll Free Fax 877.402.2248
International Customers call 818.407.2400 or Fax 818.407.2405
califone.com