

4/8-Channel 19" Combo DVR TVVR25000 / TVVR25010



User manual

Version 1.1



English

This user manual contains important information for installation and operation.

This should be also noted when this product is passed on to a third party.

Therefore look after these operating instructions for future reference!

A list of contents with the corresponding page number can be found in the index.

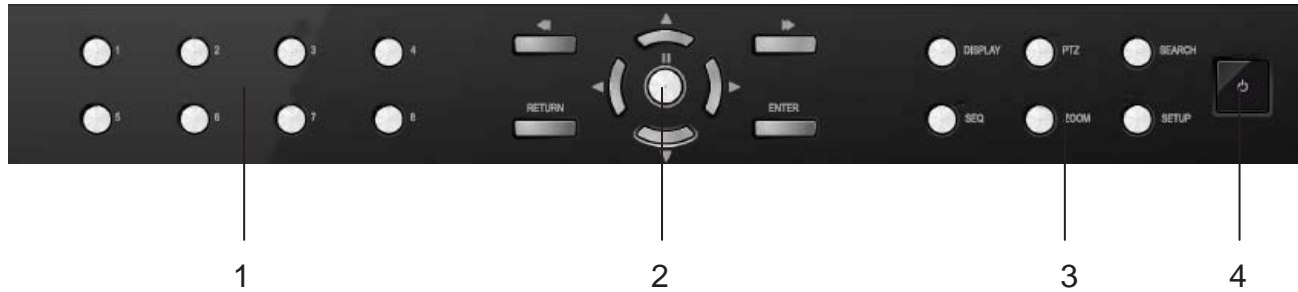


All documents can also be found in the internet at www.abus-sc.com.

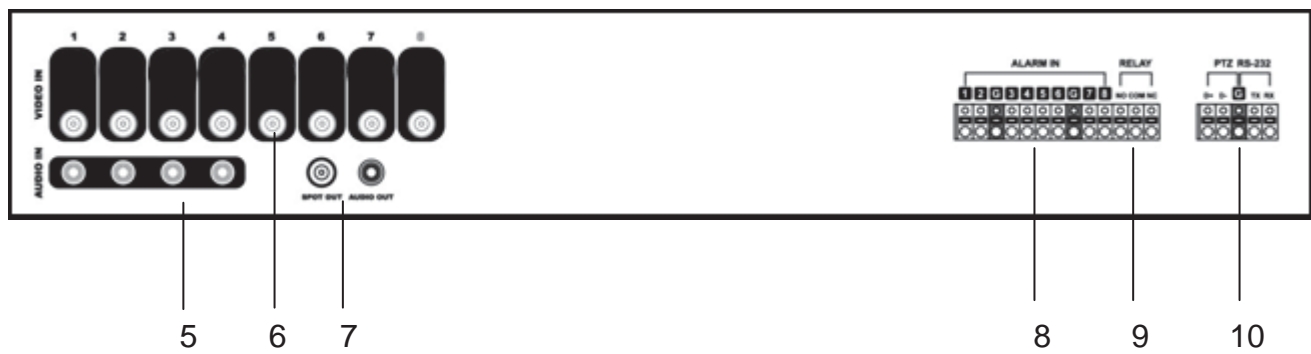
Device overview

i See **System control** page 12.

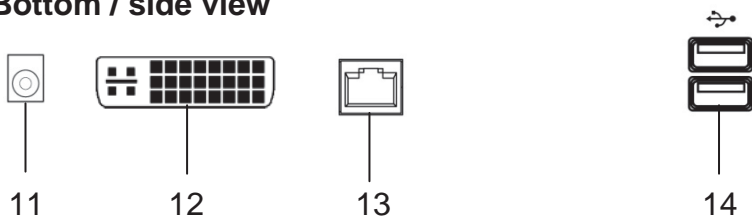
Front view



Rear view



Bottom / side view



i The pictures show TVVR25010 with 8 channels.
DVR model TVVR25000 is similar.

Remote control



Device overview	3
Quick guide	7
Before you start.....	7
Installing the HDD	7
Establishing the connections	7
Selecting the input	7
Important safety information	8
Explanation of symbols	8
Proper use	8
General information	8
Power supply	8
Overloading / overvoltage	9
Cables	9
Installation location / operating environment	9
Remote control.....	9
Care and maintenance.....	10
Accessories.....	10
Putting into operation	10
Children and the device	10
Introduction	11
General information	11
Unpacking the device.....	11
Scope of delivery	11
System control	12
General	12
Control buttons on the front panel	12
Connectors.....	12
Remote control.....	13
Mouse control	13
Keyboard.....	14
Switching off and locking the device	14
Live view	15
General	15
Menu bar.....	15
Popup menu	15
Menu	16
SETUP	16
SYSTEM SETUP	16
RECORD SETUP	27
Archiving	29
Search	30
Web server access	31
How to establish a connection	31
Live Mode	31
Search Mode.....	32
Search Mode.....	32
Technical Data	33
HDD storage capacity.....	34
Disposal	35

Contents

Information on the EU directive on waste electrical and electronic equipment	35
Information on handling batteries	35
Important information on disposing of batteries.....	35
Information on the European RoHS directive	35
Glossary.....	36
Overview of specialist terms	36
Internal HDD	38

Quick guide

Before you start

The following preparatory steps must be made:

1. Pay attention to the general information, safety information and notes on setting up and connecting the device (see page 8).
2. Check the contents of the package for completeness and damages.
3. Insert the batteries into the remote control.

Installing the HDD



Warning

Switch off the device and disconnect it from the mains power supply.

1. Install the HDD by unscrewing the HDD panel on the rear side of the housing.
2. Firstly, establish the connection to the motherboard using the red data cable (small connector).
3. Connect the power supply cable (large 5-pin connector).
4. Fix the HDD by using the included screws.
5. Close the housing.

Establishing the connections



Note

Pay attention to the minimum radius when laying cables. Do not kink the cable.

1. Connect the analogue cameras with BNC connections 1 to 16.
2. Connect the audio connections.
3. Connect the LAN connection to the network.
4. Connect the sensors to the alarm inputs.
5. Connect the mouse to the USB port.
6. Furthermore you can connect a PC to the DVI input of the device.
7. Connect the power supply.
8. Switch on the device by pressing the power button on the front side of the device.

Selecting the input





You can use the 19" combo DVR as surveillance and recording device and at the same time as PC monitor.

1. Select between DVR and PC monitor by pressing the MODE button on front panel.
2. Choose then the input by using the navigation buttons and ENTER.
3. You can adjust the settings of the DVI input by pressing the SETUP button in DVI mode.
You can move within the menu by using the navigation buttons. To confirm or select press ENTER or press RETURN to leave menu.
4. To show the live DVR picture in DVI mode enter the setup menu, select PIP and switch the option PIP to On.
5. Further on in the menu you can select the PIP position, colour controls and blend status.
6. You can switch anytime back to the other mode by pressing the MODE button.

Important safety information

Explanation of symbols

The following symbols are used in this manual and on the device:

Symbol	Signal word	Meaning
	Warning	Indicates a risk of injury or health hazards.
	Warning	Indicates a risk of injury or health hazards caused by electrical voltage.
	Important	Indicates possible damage to the device/accessories.
	Note	Indicates important information.

The following labels are used in the text:

	Meaning
1. ...	Set of tasks or instructions with a defined sequence in the text
2. ...	Set of points or warnings without a defined sequence in the text
• ...	Set of points or warnings without a defined sequence in the text
• ...	Set of points or warnings without a defined sequence in the text

Proper use

Only use the device for the purpose which it was designed and built for. Any other use is considered inappropriate.

This device may only be used for the following purpose(s):

- This digital recorder is used in combination with connected video signal sources (B/W and colour cameras, IP cameras) and video output devices (CRT or TFT monitors) for object surveillance.

Note

Data storage is subject to national data-protection guidelines.

During installation, inform your customers regarding the existence of these guidelines.

General information

Before using the device for the first time, read the following instructions carefully and pay attention to all warnings, even if you are already familiar with electronic devices.



Warning

All guarantee claims become invalid for damages caused by non-compliance with these operating instructions.

We cannot be held liable for resulting damages.



Warning

We cannot be held liable in the event of material or personal damage caused by improper operation or non-compliance with the safety information.

All guarantee claims are invalid in such cases.

Keep this manual in a safe place for future reference.

If you pass on or sell the device, you must also include this user manual.

This device has been manufactured in accordance with international safety standards.

Power supply

- Only operate this device through a power source which supplies the mains power specified on the type plate.
- If you are unsure of the power supply at the installation location, contact your power supply company.



Warning

Avoid data loss!

Always use an uninterruptible power supply (UPS) with overvoltage protection.

- Disconnect the device from the mains power supply before carrying out maintenance or installation work.
- The on/off switch does not completely disconnect the device from the mains power supply.
- To disconnect the device completely from the mains power supply, the plug must be disconnected from the mains socket. Therefore, the device should be positioned so that direct and unobstructed access to the mains socket is guaranteed at all times and the plug can be disconnected immediately in an emergency.
- To avoid the possibility of fires, the plug should always be disconnected from the network socket if the device is not used for long periods. Disconnect the device from the mains power supply before impend-

ing electrical storms, or use an uninterruptible power supply.



Warning

Never open the device on your own! There is a risk of electric shocks!
If it is necessary to open the device, consult trained personnel or your local maintenance specialist.

- The installation or modification of a HDD should only be made by trained personnel or your local maintenance specialist.



Warning

The installation of additional equipment or modification of the device invalidates your guarantee if not carried out by trained personnel.
We recommend having the HDD installed by a maintenance specialist.
Your guarantee is invalidated in the event of improper installation of the HDD.

Overloading / overvoltage

- Avoid overloading of mains sockets, extension cables and adapters as this can result in fires or electric shocks.
- Use overvoltage protection to prevent damages caused by overvoltage (e.g. electrical storms).

Cables

- Always hold cables by the connector, and do not pull the cable itself.
- Never touch the mains cable with wet hands, as this can lead to a short circuit or electric shock.
- Never position the device, furniture or other heavy items on the cable. Ensure that the cable does not become kinked, especially on the connector and sockets.
- Never knot the cable, and do not tie it to other cables.
- All cables should be laid so that they cannot be stepped on or cause an obstruction.
- A damaged mains cable can cause a fire or electric shock. Check the mains cable from time to time.
- Never modify or manipulate the mains cable or plug.
- Do not use plug adapters or extension cables that do not conform to the applicable safety standards, and do not make alterations to power supply cables or mains cables.

Installation location / operating environment

- Position the device on a firm, level surface and do not place any heavy objects on the device.
- The device is not designed for operation in rooms subject to high temperatures or moisture (e.g. bathrooms), or in excessively dusty rooms.
- Operating temperature and ambient humidity: 0 °C to 40 °C, maximum 80% relative humidity. The device may only be operated in moderate climate conditions.

Ensure the following:

- Sufficient ventilation must be present at all times (do not place the device in a storage rack, on thick carpets, on a bed or anywhere where the ventilation slots are covered. Make sure that a gap of at least 10 cm is present on all sides).
- The device must not be exposed to direct heat sources (e.g. heaters).
- The device must not be exposed to direct sunlight or strong artificial light.
- The device must not be placed in close proximity to magnetic fields (e.g. loudspeakers).
- Naked flames (e.g. candles) must not be placed on or near the device.
- Contact with spraying or dripping water and aggressive liquids must be avoided.
- The device must not be operated in close proximity to water, and must not be submerged under any circumstances (do not place objects containing water on or near the device, such as vases or drinks).
- Foreign objects must not penetrate the device.
- The device must not be exposed to strong variations in temperature, as this can lead to condensation and electrical short circuits.
- The device must not be exposed to excessive jolts or vibrations.

Remote control

- Remove all batteries if the device will not be used for a sustained period, as these can leak and damage the device.

Care and maintenance

Maintenance is necessary if the device has been damaged. This includes damage to the plug, mains cable and housing, penetration of the interior by liquids or foreign objects, exposure to rain or moisture or when the device does not work properly or has fallen.

- Disconnect the device from the mains power supply before maintenance (e.g. cleaning).
- If smoke develops or unusual noises or odours are detected, then switch off the device immediately and pull the mains plug from the socket. In such cases, the device should not be used until it has been inspected by a qualified technician.
- Maintenance work should only be carried out by qualified specialists.
- Never open the housing on the device or accessories. There is a risk of fatal injury due to an electric shock when the housing is opened.
- Clean the device housing and remote control with a damp cloth.
- Do not use solvents, white spirit or thinners as these can damage the surface of the device.
- Do not use any of the following substances:
- Salt water, insecticides, solvents containing chlorine or acids (ammonium chloride) or scouring powder.
- Gently rub the surface with a cotton cloth until it is completely dry.



Warning

The device works under dangerous voltages. The device must only be opened by authorised specialists. All maintenance and service work must be carried out by authorised firms. Improper repairs can expose device users to the risk of fatal injury.

Accessories

- Only connect devices that are suitable for the intended purpose. Otherwise, hazardous situations or damage to the device can occur.

Putting into operation

- Observe all safety and operating instructions before putting the device into operation for the first time.
- Only open the housing to install the HDD.



Warning

When installing the device in an existing video surveillance system, ensure that all devices are disconnected from the mains power supply and low-voltage circuit.



Warning

If in doubt, have a specialist technician carry out assembly, installation and connection of the device.

Improper or unprofessional work on the mains power supply or domestic installation puts both you and other persons at risk.

Connect the installations so that the mains power circuit and low-voltage circuit always run separately from each other. They should not be connected at any point or become connected as a result of a malfunction.

Children and the device

- Do not allow children access to electrical devices. Never allow children to use electrical devices without supervision. Children may not be able to accurately detect possible risks. Small parts can be life-threatening if swallowed.
- Keep batteries away from small children. Call for medical assistance immediately if a battery is swallowed.
- Keep packaging materials away from children (danger of suffocation).
- This device should not be used by children. If used improperly, spring-loaded parts can be ejected and cause injuries to children (e.g. eye injuries).

Introduction

Dear customers,

Thank you for purchasing this product.

This product complies with current domestic and European regulations. Conformity has been proven, and all related certifications are available from the manufacturer on request (www.abus-sc.com).

To maintain this status and to guarantee safe operation, it is your obligation to observe these operating instructions!

Read the entire operating manual carefully before putting the product into operation and pay attention to all operating and safety information!

All company names and product descriptions are trademarks of the corresponding owner. All rights reserved.

In the event of questions, please contact your local maintenance specialist or dealer.



Disclaimer

These operating instructions have been produced with the greatest care. Should you discover any missing information or inaccuracies, please contact us under the address shown on the back of the manual. ABUS Security-Center GmbH does not accept any liability for technical and typographical errors, and reserves the right to make changes to the product and operating instructions at any time and without prior warning. ABUS Security-Center GmbH is not liable or responsible for direct or indirect damages resulting from the equipment, performance and use of this product. No forms of guarantee are accepted for the contents of this document.

General information

In order to use the device correctly, read this user manual carefully and keep it in a safe place for later use.

This manual contains instructions on recorder operation and maintenance. Consult an authorised specialist if the device needs to be repaired.

Unpacking the device

Handle the device with extreme care when unpacking it.

The packaging is made of reusable materials, and should always be passed on for recycling.

We recommend the following:

Paper, plastic packaging, cardboard and corrugated cardboard should be disposed of in the appropriate recycling containers.

If recycling containers are not available in your local area, then you can dispose of these materials as domestic waste.

If the original packaging has been damaged, inspect the device. If the device shows signs of damage, then return it in the original packaging and contact the manufacturer.

Scope of delivery

- ABUS 19" Combo DVR
- Power supply and cable
- Remote control
- Software CD
- User manual

System control

General

You can control the DVR by using:

- Control buttons on the front
- Remote control
- USB mouse

Control buttons on the front panel



Note

Pay attention to the overview on page 3.

#	Name and function
1	Buttons 1 – 8 <ul style="list-style-type: none"> • Used to display individual channels in live display and playback. • Used to enter numeric passwords for the various login screens.
2	Navigation buttons Used to navigate in the menu. <p>ENTER Apply or Select an item.</p> <p>RETURN Cancel or go to Previous menu.</p> <p>II Play / Pause in playback</p> <p>⏮ ⏭ Increase and decrease playback speed</p>
3	MODE Selects between DVR mode and DVI input. <p>PTZ Selects PTZ mode in live display.</p> <p>SEARCH Displays the archive menu.</p> <p>DISPLAY Selects various display modes in live display and playback.</p> <p>ZOOM Selects digital zoom mode in live display.</p> <p>SETUP Displays the setup menu.</p>
4	Power Turns the system power on/off.

Connectors



Note

Pay attention to the overview on page 3.

#	Name and function
5	Audio Cinch inputs
6	Video signal BNC inputs
7	Monitor and spot monitor BNC output
8	Alarm inputs 1 – 8: Corresponding channel G: Ground
9	Relay output NO: Normally open NC: Normally closed G: Ground
10	PTZ D+/D-: Connect to PTZ-camera data line <p>RS-232 Not used.</p>
11	Power supply connector
12	DVI connector to connect external device, like a PC.
13	Ethernet network connector.
14	USB2.0 port

System control

Remote control

i Note

Pay attention to the remote control diagram on page 4.

#	Name and function
15	MODE Press the button to display the Multi-function Mode menu.
16	SETUP Displays the DVR setup.
17	ID(Remote ID) Change the ID for the Remote control to match the system ID. Use the Remote ID when using one Remote to control Multiple systems.
18	NAVIGATION buttons Press the navigation controls to move up, down, left or right in system and menus. PLAYBACK buttons Use the playback controls to pause, play, reverse or fast forward in playback mode.
19	DISPLAY Switches the display to single, quad and multi-display views.
20	PTZ Switches to PTZ mode.
21	KEYLOCK Locks all keys (except the mode button).
22	SEQUENCE Changes the monitor display to sequence mode.
23	ZOOM Displays one channel with digital zoom.
24	ARCHIVE Displays the archive menu.
25	AUDIO Switches between live audio channels (Channels 1-4 only). Press Audio and select the channel 1-4.
26	VOLUME Increase or decrease the volume of a camera during broadcasting live audio.
27	NUMBER buttons Use to switch between cameras in live view mode.

28	SEARCH Opens the playback search menu.
----	--

29	ENTER <ul style="list-style-type: none"> Press to select an option in a menu. Press to display PIP when in live view mode.
30	RETURN Exit a menu.
31	DVR Change to the DVR mode.
32	VGA Change to the VGA mode.
33	POWER <ul style="list-style-type: none"> Press the Power button to turn off the monitor Display. Press and hold the button for 3 seconds to shut down entire system.

Mouse control

i Note

The further description in this manual takes place by using the mouse.

The DVR can completely be controlled by using a USB mouse. Connect a mouse with the USB port.

Button	Function
Left	Single-click <ul style="list-style-type: none"> Select item in menu. Double-click <ul style="list-style-type: none"> Enlarge the selected channel to full screen. Click and drag <ul style="list-style-type: none"> Select areas.
Right	Single-click <ul style="list-style-type: none"> Shows popup menu.

Keyboard

The on-screen keyboard appears after clicking on a text entry field with the mouse:



The keys have the same function as on a computer keyboard.

- To enter the character, left-click the mouse.
- To finish data entry, press **Enter**.
- To delete the character in front of the cursor, click on **←**.
- To switch between upper and lower case, click on the framed **a** symbol. The current setting is displayed above the keyboard.
- To cancel the entry or exit the field, press ESC.

Switching off and locking the device

Click on "Power" in the main menu.

The overview appears.



- To switch off the device, select **Power Off** and confirm by entering the password. The device is then switched off.
 - Do not press any keys during the shutdown procedure.
- 3. To lock the system, select **Log Off** and confirm by entering the password. The user interface is now locked and a password must be entered to access the menu.

Switching on the device

- Press the **POWER** key to switch the device back on.

Live view

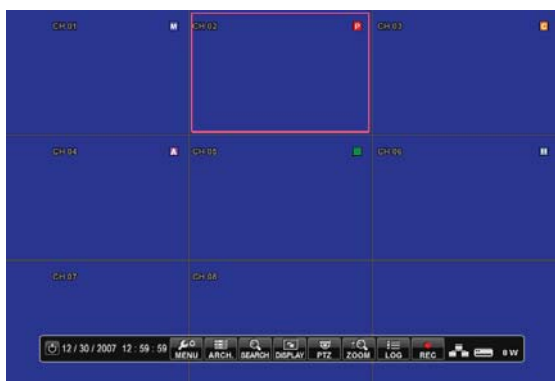
General

After the boot process the DVR automatically starts in the live view showing the LOG ON window requiring a user login.



The default user is **ADMINISTRATOR** or **ADMIN** and default password is , **1 2 3 4 5**'.

After successful login the live view is displayed.



Note

To change a content double-click the field or use the UP/DOWN arrow to change the value.

Menu bar

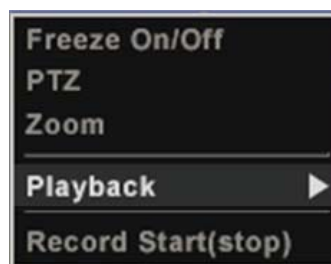
By clicking the icons on the menu bar you can easily access all main menus. Furthermore the current date and time, network connection, HDD usage is displayed.



	User log off and DVR power off
	System Setup and Record Setup
	Archiving
	Search
	Different viewing modes
	PTZ control
	Digital zoom
	Log file
	Start / Stop panic record

Popup menu

Press the right mouse button in live view to bring up the popup menu.



Freeze On/Off	Freezes image in live view.
PTZ	PTZ control
Zoom	Digital zoom
Playback	Immediate playback (10, 20, 30 seconds ago, 1 minute ago, go to...)
Record Start(Stop)	Start / Stop panic record

Menu

SETUP

After pressing the Setup button you can choose to enter the SYSTEM or RECORD setup.



SYSTEM SETUP	Camera, Display, Sound, System, User, Network, Event/Sensor, Disk Management
RECORD SETUP	Recording settings

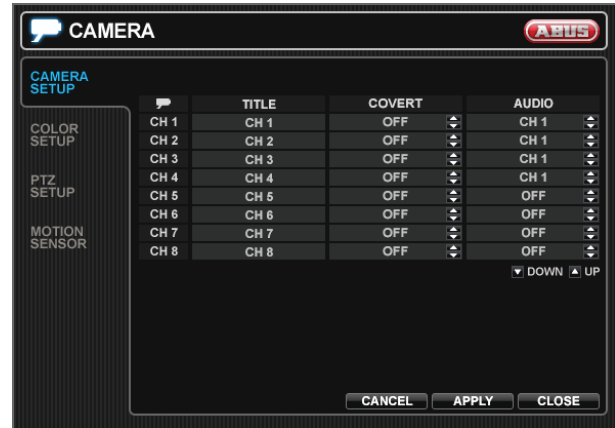
SYSTEM SETUP

All non recording specific setting can easily be made here.



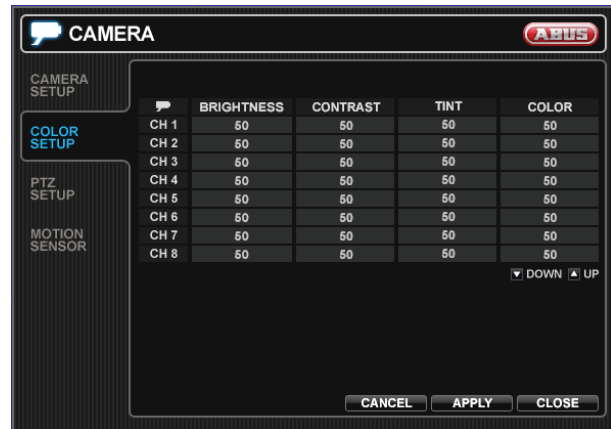
CAMERA

CAMERA SETUP



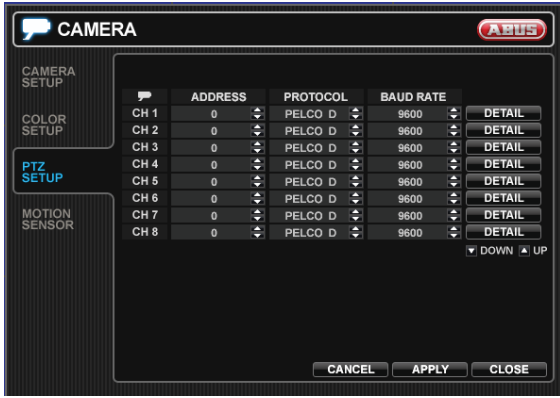
TITLE	Camera name
COVERT	When it is set to ON, the camera image is not displayed in live display but continues to be recorded.
AUDIO	Determines the audio recording channel.

COLOR SETUP

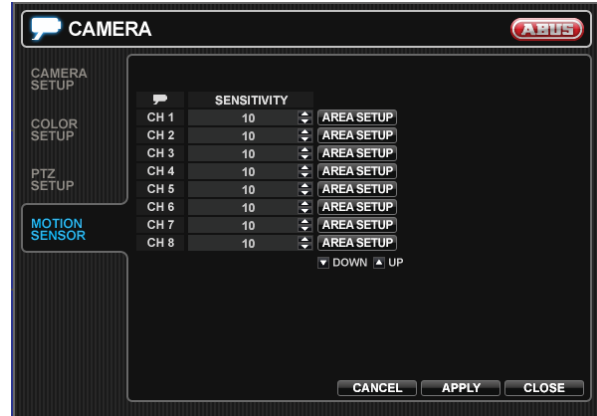


Brightness, contrast, tint and color can be adjusted for each individual channel.

PTZ SETUP



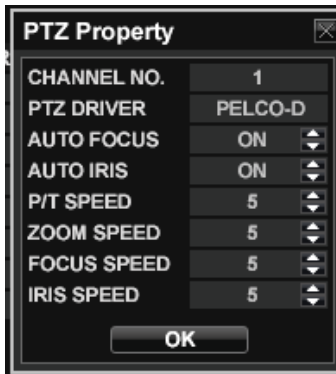
MOTION SENSOR



ADDRESS	ID address of the connected PTZ camera.
PROTOCOL	Protocol of the connected PTZ camera.
BAUD RATE	Baud rate of the connected PTZ camera.

SENSITIVITY	Between 1 (Lowest) and 10 (Highest) and determines the degree of motion required before recording is activated.
-------------	---

PTZ SETUP: DETAIL



Further detailed parameters for the PTZ camera can be set.

Note
 Compare the settings with the technical data of the connected camera.
 If a connected camera does not work correctly, then check the entered parameters (baud rate, data bit etc.).

MOTION SENSOR: AREA SETUP

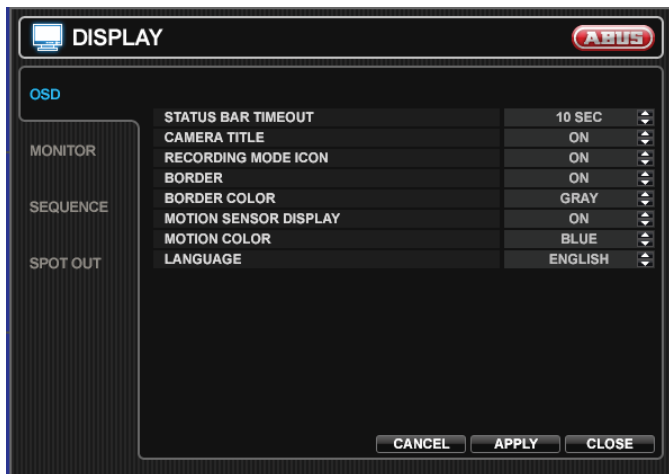


Choosing this option allows the operator to define which areas of the image are monitored for motion detection. Press and hold left button and drag the mouse to mark an area. By pressing the right button a popup is displayed offering to SELECT ALL or DESELECT ALL. Leave the menu by clicking SAVE&EXIT in the popup.

- Red line area: Selected area
- White line area: Non selected area

DISPLAY

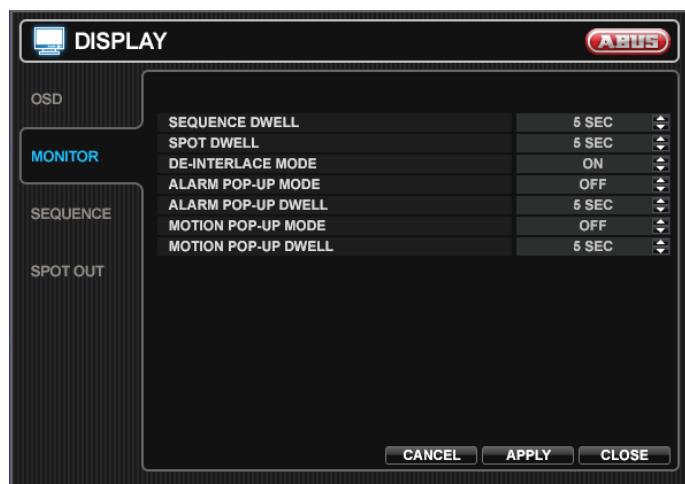
OSD



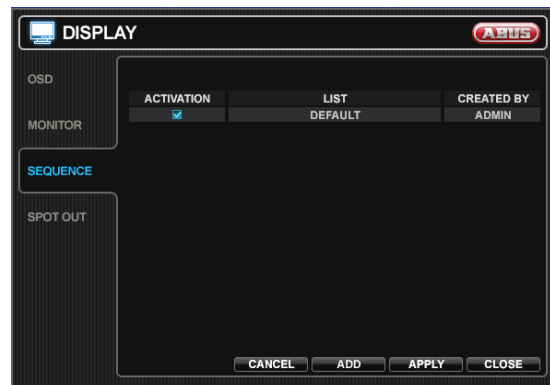
STATUS BAR TIMEOUT	Time until status bar is hidden in live view.
CAMERA TITLE	Enables/disables camera title.
RECORDING MODE ICON	Enables/disables recording icon.
BORDER	Border around each channel in multi screen display mode.
BORDER COLOR	If the border is ON, the operator can choose the color.
MOTION SENSOR DISPLAY	If ON areas where motion is detected are highlighted with colored blocks.
MOTION COLOR	The color of the blocks displayed when MOTION SENSOR DISPLAY is set to ON.
LANGUAGE	OSD language.

SEQUENCE DWELL	Time how long each channel is displayed in sequence operation.
SPOT DWELL	Time how long each screen is displayed on the spot monitor output.
DE-INTERLACE MODE	When recording any channels in D1 resolution (704 x 576), this should be set to ON to prevent judder during playback.
ALARM POP-UP MODE	When set to ON, an alarm input will cause the associated channel to display in full screen mode.
ALARM POP-UP DWELL	Determines how long the full screen popup is displayed after an alarm input is triggered. If the alarm condition continues, the popup screen is displayed constantly.
MOTION POP-UP MODE	When set to ON, motion detection will cause the associated channel to display in full screen mode.
MOTION POP-UP DWELL	Determines how long the full screen popup is displayed after motion detection. If motion continues, the popup screen is displayed constantly.

MONITOR



SEQUENCE



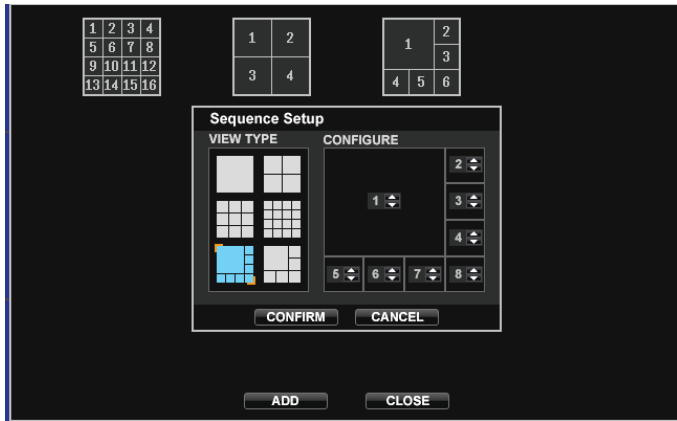
When the SEQ button is pressed, the default sequence will cycle through all 4/8 channels, one by one.

Sequence setup allows the operator to define a custom sequence, using mixed multi screen views and any desired channels.

To add a new sequence click the ADD button and enter a Name and change the ACTIVATION.

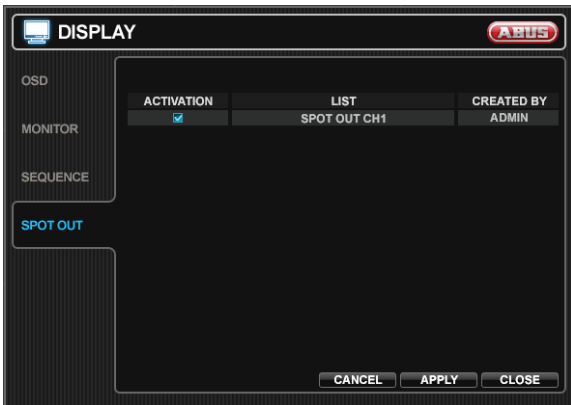


Press ADD again in order to define a new sequence.



Press CONFIRM and SAVE to close the window.

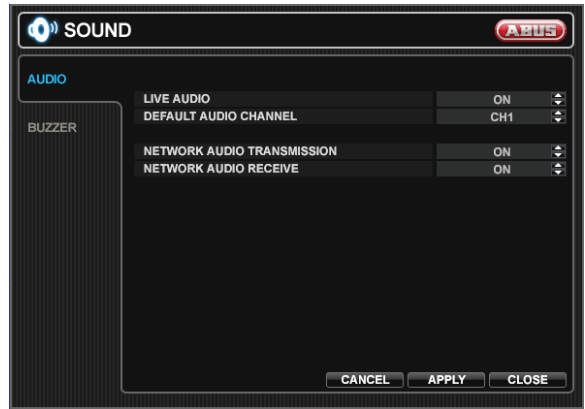
SPOT OUT



Here you can define the sequence the channels are displayed at the spot monitor output. Double-click the name in order to change the SPOT TITLE, ACTIVATION and modify the sequence. You can determine which channels are displayed and in which sequence.

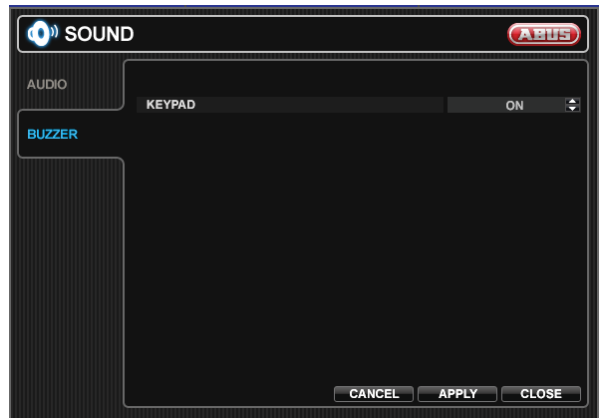
SOUND

AUDIO



LIVE AUDIO	When it is set to ON, the selected audio channel can be monitored on the AUDIO OUTPUT.
DEFAULT AUDIO CHANNEL	Specify which one of the 4 AUDIO INPUTS is routed to the AUDIO OUTPUT.
NETWORK AUDIO TRANSMISSION	When set to ON, live and playback audio is transmitted to a remote PC connection.
NETWORK AUDIO RECEIVE	When set to ON, allows a remote PC connection to send audio back to the DVR.

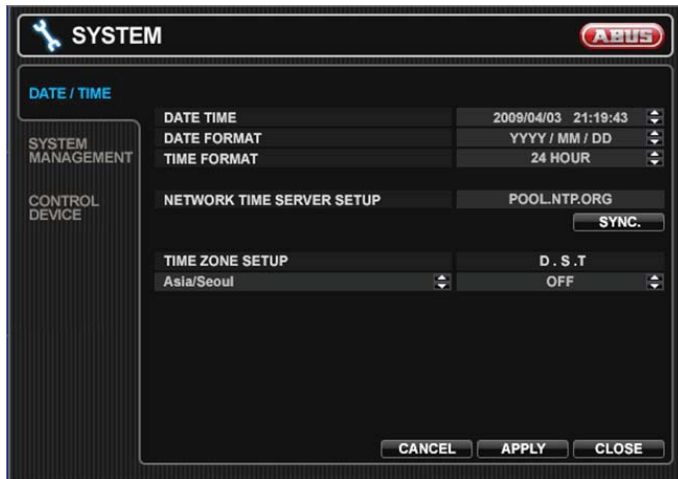
BUZZER



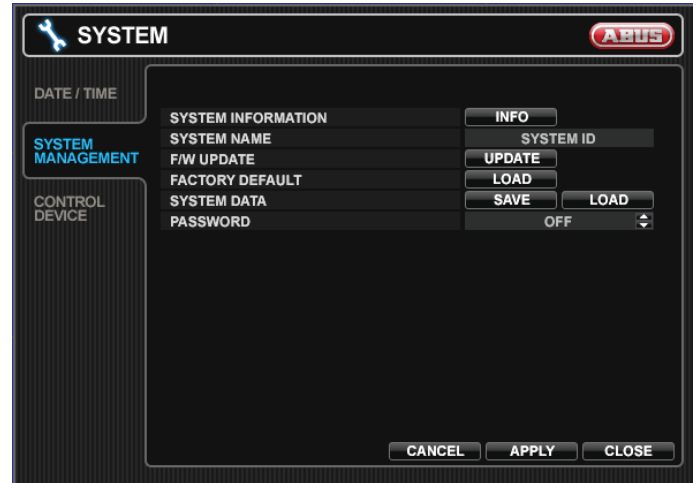
KEYPAD	When it is set to ON, each front panel button press is confirmed by a beep.
--------	---

SYSTEM

DATE / TIME



SYSTEM MANAGEMENT



DATE TIME	Set or modify the current date and time.
DATE FORMAT	Determines how the date is displayed.
TIME FORMAT	Determines how the time is displayed.
NETWORK TIME SERVER SETUP	Server to synchronize the time. If the DVR is connected to the Internet, the time and date can be accurately set by selecting SYNC.
TIME ZONE SETUP	Should be set according to the region, which the DVR is used in.
D.S.T	When is set to ON, the DVR will automatically adjust the time by one hour relevant to the date in spring and autumn.

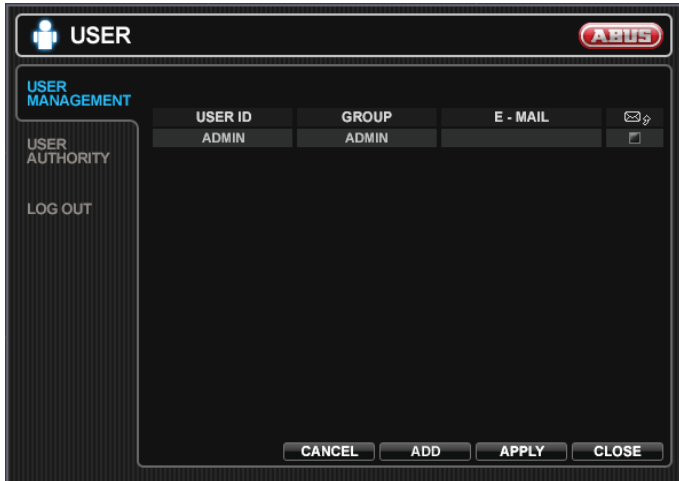
SYSTEM INFORMATION	S/W Version, H/W Version, Video Signal Type, Disk Capacity, IP Address, MAC Address, DDNS Domain Name, Net Client Port, Web Server Port
SYSTEM NAME	Name of the DVR which is shown in emails.
F/W UPDATE	Firmware updates may be released periodically to enhance system performance and add extra features. The operator can upgrade the firmware using a USB memory stick. Copy the file to a USB stick and insert it. Press UPDATE , select the firmware and press UPGRADE .
FACTORY DEFAULT	Restores the default settings.
SYSTEM DATA	Current settings can be saved and loaded by pressing the corresponding button. All settings except network settings and system named are saved.
PASSWORD	Determines the PASSWORD ON/OFF to enter specific menu.

CONTROL DEVICE

This menu is currently not used.

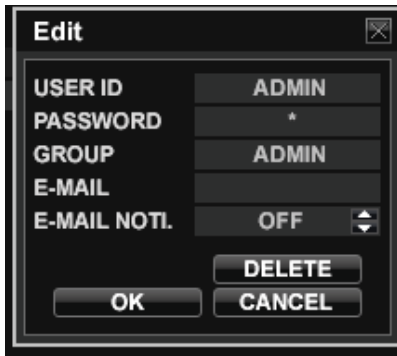
USER

USER MANAGEMENT



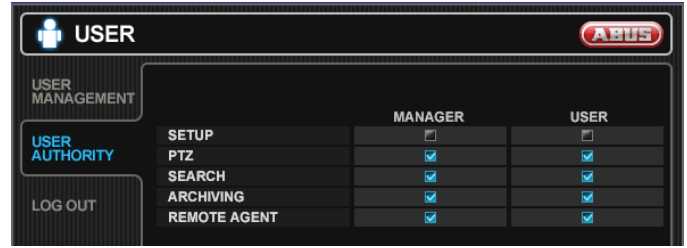
Here you can manage up to 8 different users. The default user is **ADMIN** and default password is ,1 2 3 4 5'.

Double-click the USER ID to change an existing user or press ADD to create a new user.



USER ID	Enter a name (Max. 10 characters).
PASSWORD	Password to perform different actions.
GROUP	Users can belong to one of three groups - ADMIN, MANAGER or USER.
E-MAIL	Enter the users email address if email notification is required (Max. 64 Characters).
E-MAIL NOTI.	Enable or disable email notifications for this particular user.
DELETE	Delete the current user.

USER AUTHORITY



Define the different rights for MANAGER and USER.

SETUP	Change settings.
PTZ	Control PTZ cameras.
SEARCH	Enter the SEARCH menu.
ARCHIVING	Enter the ARCHIVING menu.
REMOTE AGENT	Connect by network to the web server.

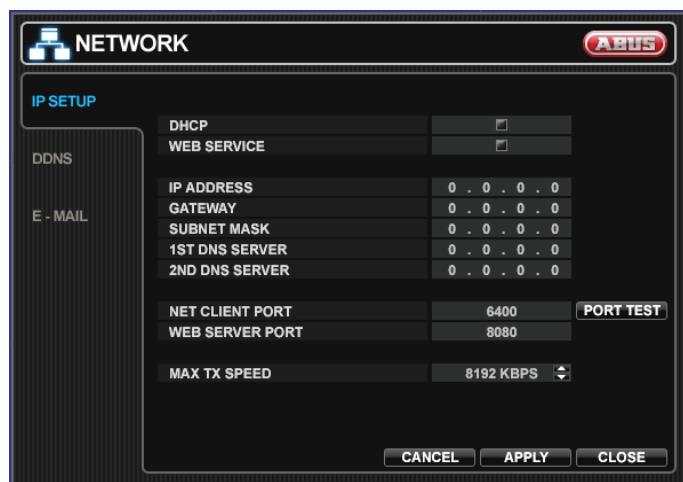
LOG OUT



AUTO LOGOUT	Determines the AUTO LOGOUT ON/OFF.
DURATION	In case of selecting AUTO LOGOUT ON, determines the duration until log-out.

NETWORK

IP SETUP



	when pressing AUTO PORT. Furthermore the port can be deleted or tested.
MAX TX SPEED	Specifies the maximum bandwidth that the DVR can use during a remote connection.

DDNS



1. To use the ABUS DDNS function, you must first set up an account at www.eytronserver.com. Please note the FAQs on the website when doing this.
2. Activate the DDNS function by setting the DDNS field to ON and choosing the ABUS SERVER.
3. Press the TEST button to test the functionality.

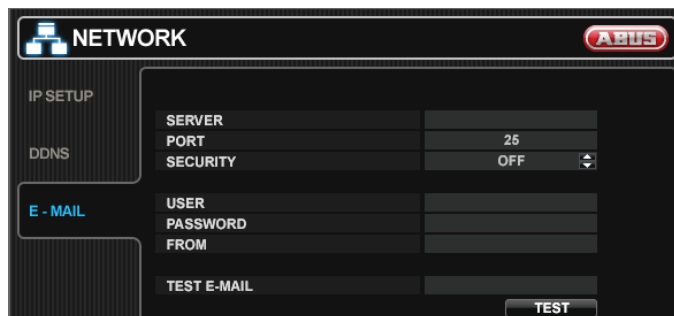


Note

Before testing the functionality an account and DVR at www.eytronserver.com has to be set up.

Every minute the DVR will now update the IP-address and port and you can easily access the DVR through www.eytronserver.com.

E-Mail



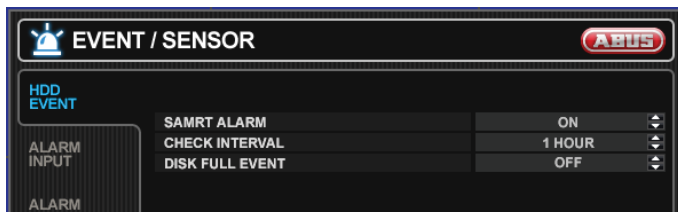
SERVER	Enter here the SMTP outbound email server that should be used to send email notifications.
PORT	The outbound email port number.
SECURITY	Set to OFF if the SERVER does not require a username and password to connect.
USER	Enter a username to identify the DVR in email messages
PASSWORD	If SECURITY is set to ON, enter the password here.
FROM	Input the E-mail address or any text. It

DHCP	When enabled, the DVR will obtain an IP address automatically if it is connected to a DHCP server or router.
WEB SERVICE	When enabled remote network connections using Internet Explorer is allowed.
IP ADDRESS	If DHCP is not being used, the IP address can be manually set.
GATEWAY	If DHCP is not being used, the gateway IP address can be manually set.
SUBNET MASK	If DHCP is not being used, the subnet mask can be manually set.
1 ST DNS SERVER	If DHCP is not being used, the first DNS server can be manually set.
2 ND DNS SERVER	If DHCP is not being used, the second DNS server can be manually set.
RTSP SERVICE PORT	RTSP stands for Real Time Stream Protocol. Current video players and also media players can stream channels directly. You need to enter the stream as below: rtsp://IP-address:RTSP port/ e.g. rtsp://192.168.178.105:554/ If connected router supports UPNP (Universal plug and play) function, port forwarding is automatically setup when pressing AUTO PORT. Furthermore the port can be deleted or tested.
WEB SERVER PORT	The port number that the DVR uses to support remote connection from Internet Explorer. If connected router support UPNP (Universal plug and play) function, port forwarding is automatically setup

	is used only for E-mail test (E-mail sender)
TEST E-MAIL	Enter an e-mail address and press TEST to send a test e-mail.

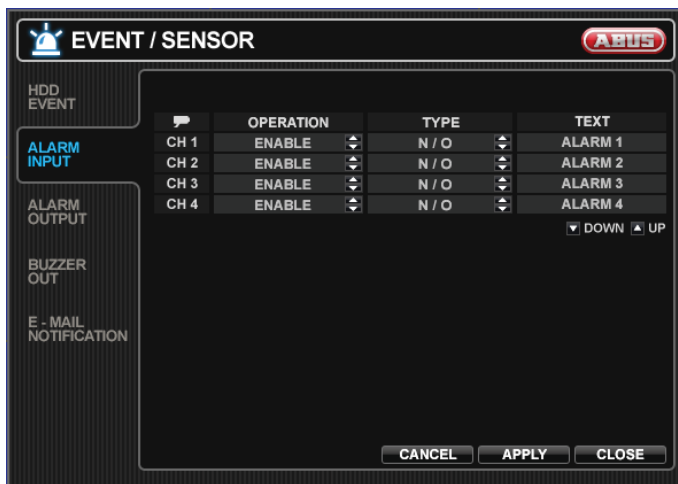
EVENT/SENSOR

HDD EVENT



SMART ALARM	Enables SMART disk monitoring.
CHECK INTERVAL	Adjust the interval the disk is checked.
DISK FULL EVENT	Determines the event ON/OFF.

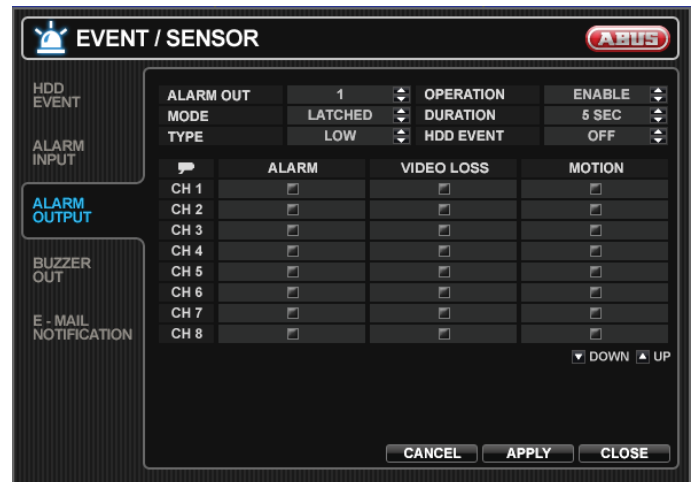
ALARM INPUT



Determines the behavior of each alarm input.

OPERATION	Alarm inputs can be enabled or disabled.
TYPE	Set as normally open or normally closed.
TEXT	Enter a name.

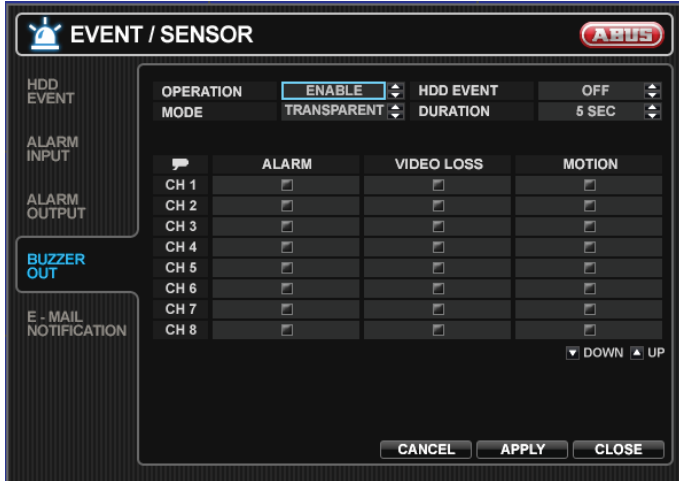
ALARM OUTPUT



Determines the behavior and actions that will trigger each alarm output.

ALARM OUT	Choose which alarm output to configure.
OPERATION	The selected alarm output can be enabled or disabled
MODE	Can be either TRANSPARENT (the output is active when the criteria is triggered) or LATCHED (the output is active for a set period of time after it has been triggered).
DURATION	In LATCHED mode, the time that the alarm output remains active after it has been triggered.
TYPE	Can be set to high (0V to +5V when activated) or low (+5V to 0V when activated).
HDD EVENT	Determines whether a hard drive event triggers the alarm output.
ALARM	Determines whether alarm inputs will trigger the alarm output.
VIDEO LOSS	Determines whether video loss on any of the selected channels will trigger the alarm output.
MOTION	Determines whether motion detection on any of the selected channels will trigger the alarm output.

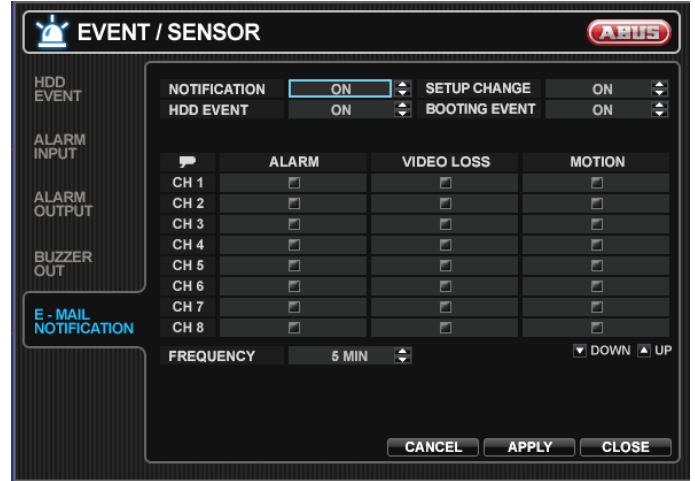
BUZZER OUT



Determines the behavior and actions that will trigger the internal buzzer.

OPERATION	The internal buzzer can be enabled or disabled.
HDD EVENT	Determines whether a hard drive event triggers the alarm output.
MODE	Can be either TRANSPARENT (the output is active when the criteria is triggered) or LATCHED (the output is active for a set period of time after it has been triggered).
DURATION	In LATCHED mode, the time that the alarm output remains active after it has been triggered.
ALARM	Determines whether alarm inputs will sound the buzzer.
VIDEO LOSS	Determines whether video loss on any of the selected channels will sound the buzzer.
MOTION	Determines whether motion detection on any of the selected channels will sound the buzzer.

E-MAIL NOTIFICATION



Determines the behavior and actions that will send an email to a user.

NOTIFICATION	E-mail notification can be turned ON or OFF.
SETUP CHANGE	Determines whether a change in the setup sends an email.
HDD EVENT	Determines whether a hard drive event sends an email.
BOOTING EVENT	Determines whether a booting event sends an email.
ALARM	Determines whether a triggered alarm input will send an email.
VIDEO LOSS	Determines whether video loss on any of the selected channels will send an email.
MOTION	Determines whether motion detection on any of the selected channels will send an email.
FREQUENCY	E-mail sending period (Max. 60 minutes)



Note

E-mail settings must also be configured in MAIL and USER MANAGEMENT in USER MANAGEMENT menu.

DISK MANAGE

DISK MANAGEMENT



RECORD TIME LIMIT	In certain circumstances, it may be necessary to limit the amount of data stored on the HDD (to comply with data protection laws for example). Recording can be limited to 12 hours, 1 day, 2 days, 3 days, 1 week or one month. Once the DVR has reached the limit, it will start to overwrite the earliest recorded data.
OVERWRITE	If set to ON, the DVR will start to overwrite the earliest recorded data, once the hard drive is full. In this case, the HDD used percentage shown in the live display will always be 99%. When it is set to OFF, the DVR will stop recording when the disk is full.
FORMAT	Click to format all data on the HDD.



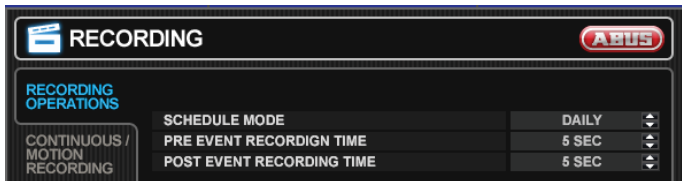
Note

When a RECORD TIME LIMIT is set, the OVERWRITE option cannot be changed.

RECORD SETUP

In this menu the recording behaviour of the DVR is set up.

RECORDING OPERATIONS

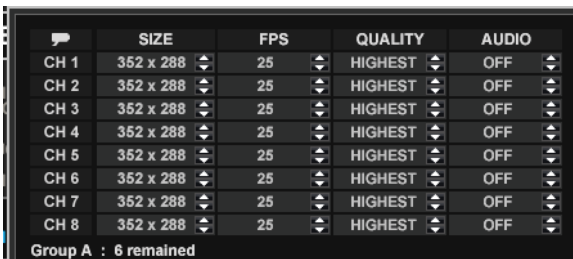


SCHEDULE MODE	Select between DAILY (schedule will apply to every day of the week) or WEEKLY (each day of the week has its own schedule).
PRE EVENT RECORDING TIME	When the DVR is not in continuous recording mode, this setting determines the amount of data that is always recorded before an event occurs (motion detection, alarm input etc.).
POST EVENT RECORDING TIME	When the DVR is not in continuous recording mode, this setting determines the amount of data that is always recorded after an event occurs (motion detection, alarm input etc.).

SIZE/FPS/QUALITY	Recording settings for each channel can be defined across a 24 hour period, in blocks (for example between 09:00 and 18:00) or for each individual hour. Note that when SCHEDULE MODE is set to WEEKLY, each day of the week can also be selected.
ACTIVATION	This section determines at what times the DVR will record and whether it is in continuous recording or motion detection.

SIZE/FPS/QUALITY

In order to change the recording settings you need to mark the hour in the time bar. Click and hold the left mouse button to select the hours. After releasing the mouse button a window to change the settings will open.

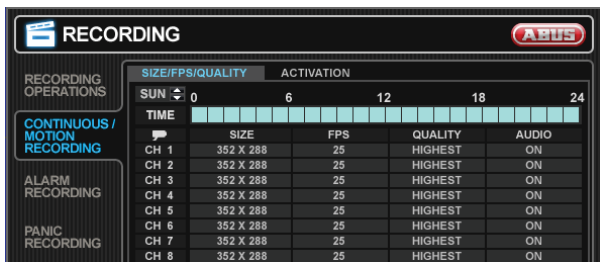


Note

Remember that if SCHEDULE MODE is set to WEEKLY, recording settings need to be changed for each day as well as for each particular time.

SIZE	Recording resolution: 352x288, 704x288 or 704x576
FPS	Recorded frames per second
QUALITY	Four different recording quality settings.
AUDIO	Select if audio shall be recorded. Audio channels have to be assigned first.

CONTINUOUS/MOTION RECORDING



This setup screen allows the operator to configure scheduled and motion detection recording.

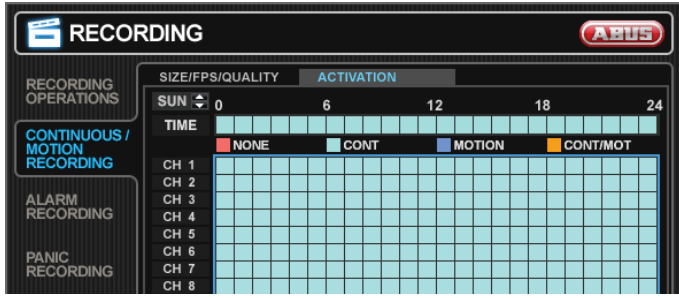
Note

Each SIZE mode has a total amount FPS. When adjusting the FPS the remaining frames for the other channels are shown at the bottom. If a negative value is shown the FPS value has to be changed.

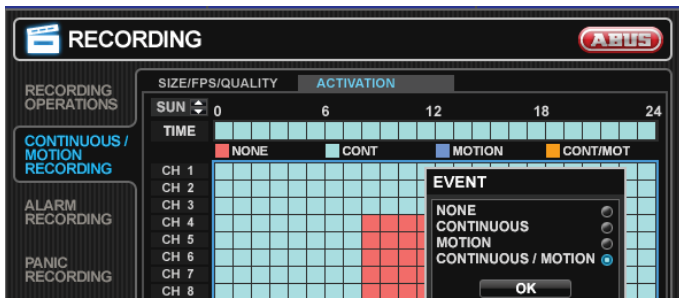
Note

During playback, when a particular channel is selected in full screen, the assigned audio channel will be played back at the same time.

ACTIVATION



Click and hold the left mouse button to select the hours and channels. After releasing the mouse button a window to change the settings will open.



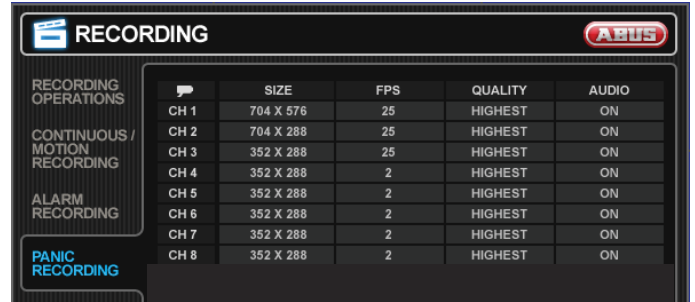
NONE	No schedule set.
CONTINUOUS	The DVR will record continuously
MOTION	The DVR will only record when motion is detected.
CONTINUOUS/MOTION	The DVR will record continuously with motion event.

ALARM RECORDING

Here you can configure the recording settings if an alarm input is triggered. Continuous recording and alarm recording can be combined. For example the recorder will record continuously at a low frame rate and then increase to a higher frame rate during an alarm input is triggered.

Please refer to CONTINUOUS/MOTION setup for details on setting up SIZE/FPS/QUALITY and ACTIVATION.

PANIC RECORDING



Here you can configure the recording settings for panic recording.



Note

During panic recording mode, the DVR will ignore all other recording settings and record continuously on all channels at the settings configured here.

Archiving

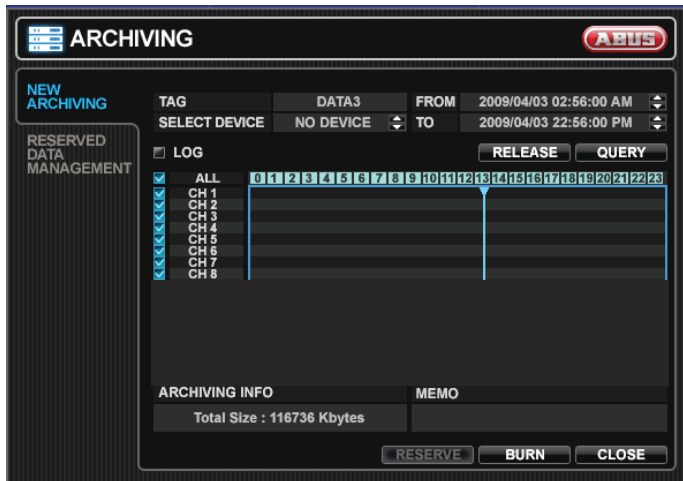
In the Archiving menu you can search for recorded data and create a backup to a USB memory stick.



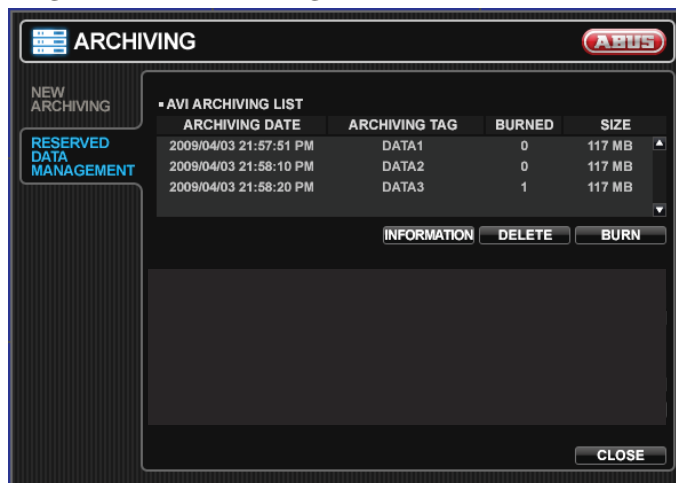
Note

To protect unauthorized viewing and distribution of data, only the ADMIN user level can archive data.

NEW ARCHIVING



RESERVED DATA MANGEMENT



All reserved video and snapshot files are listed here.

INFORMATION	Further information of reserved data.
DELETE	Delete reserved data.
BURN	Backup reserved data.

TAG	Enter a name to identify the archive.
SELECT DEVICE	Select a USB memory device.
FROM	Enter a start time.
TO	Enter an end time.
LOG	Select if a log file should be copied to the USB medium.
QUERY	Press to search for data.
RELEASE	Press to release search results.
RESERVE	Press to place the search result to RESERVED DATA MANGEMENT and burn later.
BURN	Press to copy current search result to connected USB medium.

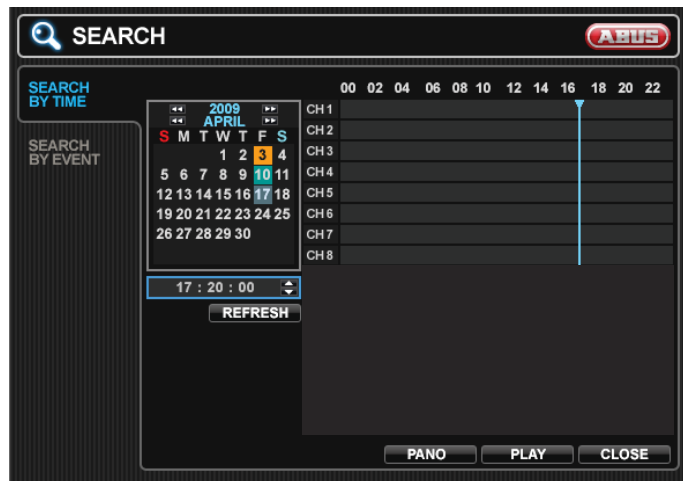
Search

In the Search menu you can search for recorded data by date and time or events.

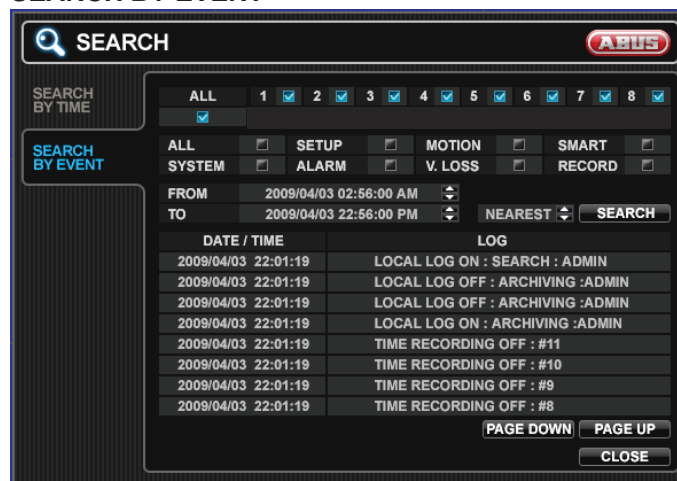
Note

To protect unauthorized viewing and distribution of data, only the ADMIN user level can archive data.

SEARCH BY TIME



SEARCH BY EVENT



Here you can search the log file for different events. Select the channel, start and end time, the kind of event press search to display the result. Before pressing the SEARCH button you can determine the order by selecting NEAREST or FARTHEST. By double-clicking a search result immediate playback is started.

Calendar	Days with recorded data are marked in the calendar.
Time bar	In the time bar all recordings are displayed for each channel.
PANO	One channel is displayed thumbnail preview with different time periods: Channel 1 = 0:00 – 3:00 o'clock Channel 1 = 3:00 – 6:00 o'clock Channel 1 = 6:00 – 9:00 o'clock Channel 1 = 9:00 – 12:00 o'clock Channel 1 = 12:00 – 15:00 o'clock Channel 1 = 15:00 – 18:00 o'clock Channel 1 = 18:00 – 21:00 o'clock Channel 1 = 21:00 – 24:00 o'clock The user can easily view one camera at different daytimes.
PLAY	Start playback from the selected time. In the playback controls there is the option to start immediate backup.

Web server access

How to establish a connection

In an internal network you can easily connect to the internal web server by opening the Internet Explorer and type the IP-address and port of the DVR as below:

http://IP ADDRESS:WEB SERVER PORT
e.g. http://192.168.178.105:8080

The first part of the URL is the IP ADDRESS of the DVR, the second part the WEB SERVER PORT. Both can be found in the SYSTEM MANAGEMENT menu by pressing the INFO button.

i Note

The IP-address and port shown above are an example. Please check your system for the correct information.

i Note

If you want to connect over the internet to the DVR you need to set up port forwarding in your router. The WEB SERVER PORT has to be forwarded to the IP ADDRESS for the TCP protocol.

After entering the URL a window opens requesting user name and password.



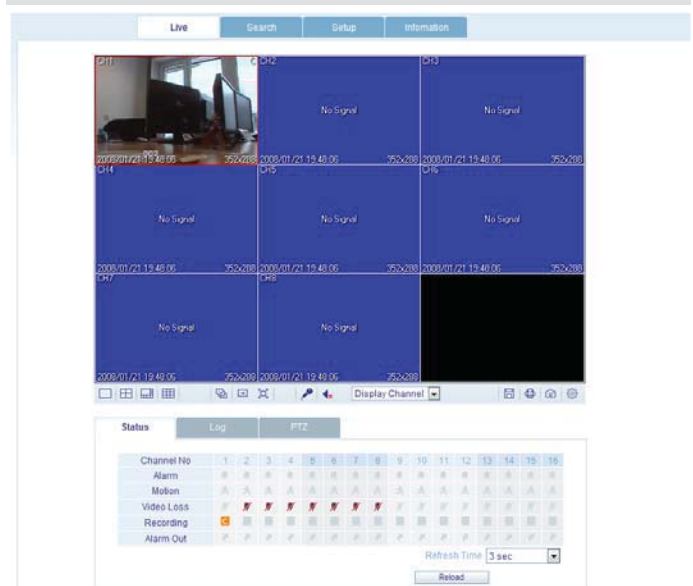
i Note

Please consider small and big letters.

i Note

When a connection is first established, Active-X control elements must be loaded for the web interface to be displayed correctly. Confirm the download and install the elements.

Live Mode



In Live mode all connected cameras and status are displayed.

Button	Description
	Different display modes.
	Select next camera, Full screen display.
	Select a channel.
	<ul style="list-style-type: none"> Start/stop live recording. Print the current screen. Create a snapshot of the current screen. Setup [Render] and [Save Folder]

Status



Displays the status of Alarm, Motion, Video loss, Recording and Alarm out of all channels.

Log

No.	Camera Title	Date Time	Log
1	CH16	2009.09.24 10:57:20	TIMER RECORDING ON : #16
2	CH15	2009.09.24 10:57:20	TIMER RECORDING ON : #15
3	CH14	2009.09.24 10:57:20	TIMER RECORDING ON : #14
4	CH13	2009.09.24 10:57:20	TIMER RECORDING ON : #13
5	CH12	2009.09.24 10:57:20	TIMER RECORDING ON : #12
6	CH11	2009.09.24 10:57:20	TIMER RECORDING ON : #11
7	CH10	2009.09.24 10:57:20	TIMER RECORDING ON : #10
8	CH9	2009.09.24 10:57:20	TIMER RECORDING ON : #9

Page Down Page Up Refresh Time: 3 sec Reload

Shows the current log file.

PTZ

Status	Log	PTZ
Pattern 0 [Set] [Run]		
Swing Start: 0 [Set] [Run] End: 0 [Set] [Run]		
- Focus + [PTZ]		
- Zoom + [PTZ]		
- Iris + [PTZ]		
Position Step 1 [Set] [Run]		

Shows the control panel for connected PTZ cameras.

Search Mode

CH	Camera Title	Covert	Audio
1	CH1	OFF	01 CH
2	CH2	OFF	01 CH
3	CH3	OFF	01 CH
4	CH4	OFF	01 CH
5	CH5	OFF	OFF
6	CH6	OFF	OFF
7	CH7	OFF	OFF
8	CH8	OFF	OFF
9	CH9	OFF	OFF
10	CH10	OFF	OFF
11	CH11	OFF	OFF
12	CH12	OFF	OFF
13	CH13	OFF	OFF
14	CH14	OFF	OFF
15	CH15	OFF	OFF
16	CH16	OFF	OFF

In Setup Mode you have access to all settings of the DVR and can change these remotely.

Search Mode

Search By Time: 2010/01/27 10:27:43 Refresh Day Backup

Search By Event: Continuous, Panic, Alarm, Motion, PIR

In the Search mode you can view recordings. You can search for recordings by using the time bar or by events. Furthermore you can backup recorded data by pressing the button Backup.

Technical Data

Subject to alterations and errors. The dimensions are approximate values.

ABUS DVR	TVVR25000	TVVR25010
Video compression	H.264	
Camera inputs	4	8
Monitor	19"	
Monitor Resolution	1280X1024	
Camera outputs	-	
Monitor outputs	1 x BNC (1.0 V p-p, 75 Ω)	
Operating mode	Triplex	
Resolution live view	704 x 576	
Resolution recording	352 x 288 @ 25fps 704 x 288 @ 12fps 704 x 576 @ 6fps	
Compression levels	5	
Pre- / post-alarm buffer	5 Sec./ 300 Sec.	
Storage	1 x SATA HDD	
Backup	USB, Network	
Viewing modes	1 / 4	1 / 4 / 6 / 8 / 9
Recording modes	Schedule, motion, alarm	
Search modes	Event, date/time, Panorama	
Alarm inputs (NO/NC)	4	8
Relay outputs	1	
User levels	5 user levels	
Network connector	RJ45 10/100 Mbit	
Simultaneously remote connection	4	
Network functions	Live view, search, backup, setup	
DDNS	√	
NTP	√	
PTZ Control	√	
PTZ protocols	Pelco-D, Pelco-P, D-MAX, Panasonic WV-CSR604, Panasonic WV-CS850	
Alerting	Acoustic signal, OSD signal, Email	
Audio	Audio In: 4 x RCA (1.4 Vp-p, 10kΩ) Audio Out: 1 x RCA (600Ω)	
Control	Mouse, Remote control	
Software	-	
OSD languages	German, English, French, Dutch, Danish, Spanish, Portuguese, Russian, Polish, Italian	
Power supply	12V / 5A	
Power consumption	<60W	
Operating temperature	0°C ~ 40°C	
Humidity	20 ~ 80%	
Dimensions (WxLxH))	460 x 447 x 67 (including stand)	
Weight	Approx. 9kg	
Certificates	CE,FCC	

HDD storage capacity

In addition to the actual storage capacity of the installed HDD, the required storage space for recording and surveillance depends on the set resolution and frame rate of the recording.

Continuous recording, 1TB HDD:

Channels	Resolution	FPS	Quality	Recording time
4	CIF	25	Highest	48 days
4	2CIF	16	Highest	30 days
4	4CIF	8	Highest	23 days
8	CIF	25	Highest	24 days
8	2CIF	16	Highest	15 days
8	4CIF	8	Highest	11 days

Disposal

Information on the EU directive on waste electrical and electronic equipment

To protect the environment, do not dispose of the device with domestic waste at the end of its service life. It can be disposed of at one of the appropriate collection points in your country. Please obey your local regulations when disposing of material.



Dispose of the device in accordance with EU directive 2002/96/EC – WEEE (Waste Electrical and Electronic Equipment). If you have any questions, please contact the department of your local authority which is responsible for waste disposal. Used equipment can be disposed of, for example, by your local or municipal authority, the local waste disposal company or your dealer.

Information on handling batteries

- Always insert batteries with the correct polarity. Never attempt to recharge the batteries supplied and do not throw them into naked flames under any circumstances. Do not use different batteries at the same time (old and new, alkaline and zinc-carbon etc.). Remove the batteries if the device is not used for a long period of time. If used improperly, there is a risk of explosion and leaking batteries!
- Take environmental protection into account – used batteries should not be disposed of in domestic waste! They must be taken to a collection point for used batteries.
- Make sure that batteries are kept away from small children. Children may put batteries in their mouths and swallow them. This can cause serious harm to their health. If this happens, consult a doctor immediately.
- Do not charge normal batteries, heat them up or throw them into naked flames (they may explode).

- Change low batteries in good time.
- Always change all the batteries at the same time and use batteries of the same type.



Important

Leaky or damaged batteries can cause chemical burns on contact with the skin.

- ▶ In this case, wear protective gloves.
- ▶ Clean the battery compartment with a dry cloth.

Important information on disposing of batteries

Your product uses batteries which are subject to the European directive 2006/66/EC and may not be disposed of with domestic waste.

Find out about the regulations for the separate collection of batteries which apply in your country.

Proper disposal of batteries helps prevent harm to health and the environment.

Batteries that contain harmful chemicals are labelled with these signs:



Pb = battery contains lead

Cd = battery contains cadmium

Hg = battery contains mercury

Information on the European RoHS directive

The device complies with the RoHS directive.

Compliance with the RoHS directive means that the product or component does not contain more than the following maximum concentrations of the following substances in homogeneous materials, unless the substance is part of an application that is excluded from the RoHS directive:

- a) 0.1% lead (by weight)
- b) Mercury
- c) Hexavalent chromium
- d) Polybrominated biphenyl (PBB) and polybrominated diphenyl ether
- e) 0.01% cadmium (by weight)

Glossary

Overview of specialist terms

- 1080i**
HDTV image signal with 1080 pixels and interlaced display.
- 16:9**
Cinematographic aspect ratio on widescreen displays.
- 720p**
HDTV image signal with 1280 x 720 pixels and progressive display.
- CIF**
Common Intermediate Format
Originally planned for converting PAL to the NTSC standard. CIF corresponds to a video resolution of 352 x 288 pixels (2CIF = 704 x 288 pixels; 4CIF = 704 x 576 pixels).
- CINCH**
Socket type used for analogue audio or CVBS video signals.
- CVBS**
Colour, Video, Blank and Sync – The simplest variation of video signals (also known as composite video). The image quality is comparatively low.
- DDNS**
Dynamic Domain Name System entry
Network service which provides and updates IP addresses of its clients in a database.
- DHCP**
Dynamic Host Configuration Protocol
Network protocol which allows the automatic connection of devices (clients) in existing networks. DHCP servers (e.g. Internet routers) automatically assign the IP address, network mask, gateway, DNS server and WINS server (when required). Only the automatic acquisition of IP addresses must be activated for the client in this case.
- Domain**
Name used for the identification of websites on the Internet (e.g. www.abus-sc.de).
- Dual Stream**
Dual stream is a video transmission method. A high-resolution recording and lower-resolution transmission are made over the network, for example. The main stream has a 4CIF resolution and the sub-stream has a CIF resolution.
- DVR**
Digital Video Recorder – A device used for recording different video and audio sources (analogue, digital). The data is compressed for recording and saved on hard disk drives (HDD).
- H.264**
(MPEG-4 AVC) – Standard method for the highly-efficient compression of video signals. Used on Blu-ray discs or video conference systems, for example.
- HDD**
Hard Disk Drive
Digital data storage on computers or DVRs.
- GIGABYTE**
Unit of capacity for storage media (HDD, USB, SD/MMC cards).
- HDVR**
Hybrid DVR – DVR used for recording analogue cameras and network cameras.
- http**
Hypertext Transfer Protocol
Method for transmitting data across networks. Primarily used for displaying websites in a browser.
- INTERLACED**
Method for improving the picture quality of a video signal without consuming extra bandwidth (scan pattern on every second line).
- IP address**
An address in the computer network based on the Internet protocol. Allows different devices to identify themselves in a network so that they are accessed specifically.
- JPEG**
Compression method for photo images with minimal loss. Most digital cameras save photos in JPEG format.

MPEG

Moving Picture Experts Group – International standard for the compression of moving images. On some DVDs, the digital audio signals are compressed and recorded in this format.

NTP

Network Time Protocol

Method for synchronising the time across networks. SNTP (Simple Network Time Protocol) is also available, offering a simplified protocol.

NTSC

Standard television format in the USA. The method is different from the European PAL system in certain ways. A full-screen NTSC image is comprised of 480 visible lines and a total of 525 lines. 60 half-images are displayed per second. Compared to PAL, the system is more susceptible to colour errors.

PAL

Phase Alternating Line – European colour TV system. Uses 576 visible image lines. Together with the lines used for signal management, a full-screen image is comprised of 625 lines. 50 half-images are displayed per second. The phase position of the colour signal changes from line to line in the image.

PANEL

Interior of a flatscreen display (e.g. LCD or plasma panels).

PC

Personal Computer – Can be used as a remote site, either with the software supplied or over a browser.

Pixel

Short for “picture element”, the smallest unit for digital image transmission or display.

PIP

Picture in Picture – Where two signal sources are shown on the screen at the same time. The second signal source is stored above the first.

PPPoE

PPP over Ethernet (point-to-point protocol)

Network transmission method used for establishing a connection over dial-up lines. Used in ADSL connections, for example).

PROGRESSIVE

Method for displaying, storing or transmitting moving images in which all the lines of each frame are drawn in sequence. This is in contrast to the interlacing used in traditional television systems.

PTZ

Pan-Tilt-Zoom

Pan, tilt and zoom function on motor-driven cameras.

RESOLUTION

Normal PAL television systems show images in 576 lines, normally with 768 pixels. HDTV works with at least 1280 x 720 pixels.

SCREEN SIZE

Size of the display from the bottom-left corner to the top-right corner in inches or centimetres.

Browser

Program for viewing websites on the Internet.

USB

Universal Serial Bus

Serial bus connection, used for connecting media whilst in operation. Maximum data rate for USB 2.0: ca. 320 Mbit/s (ca. 40 MB/s).

VGA

Video Graphics Array – Standard interface for analogue video signals in PCs (primarily deals with RGB signals).

ZOLL (inches)

Typical unit of screen size. One inch is equivalent to 2.54 centimetres. The most common sizes of 16:9 displays are 26 inch (66 cm), 32 inch (81 cm), 37 inch (94 cm), 42 inch (106 cm), 50 inch (127 cm) and 65 inch (165 cm).

Internal HDD

The internal hard disk drive (HDD) is very sensitive. Operate the device according to the following instructions in order to avoid drive errors. Important recordings should be backed up on external media to avoid unexpected data loss.



Note

- Do not move the device during operation.
- Moisture inside the device can condense and lead to HDD malfunctions.
- When the device is turned on, never remove the mains plug from the socket or interrupt the power supply using the safety switch.
- Do not move the device immediately after switching it off. To move the device, carry out the following steps:
 1. Wait until OFF has been shown on the display for at least two minutes.
 2. Remove the mains plug from the socket.
 3. Move the device.
- Data on the HDD can be lost in the event of a power failure during operation. Use an uninterruptible power supply (UPS)!
- The HDD is very sensitive. Improper use or unsuitable surroundings can damage the HDD after some years of use. This may be indicated by the playback stopping unexpectedly or visible “mosaic” effects in the image. In some circumstances, there are no prior signs of a HDD malfunction.
- In the event of a malfunction, no recordings can be played. The HDD must be replaced in this case.

ABUS 19" Combo DVR

TVVR25000 / TVVR25010

Manufacturer
ABUS Security-Center GmbH & Co. KG
Linker Kreuthweg 5
86444 Affing (Germany)